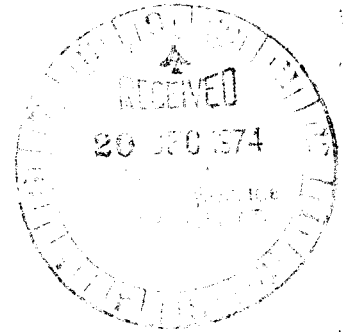


LOON LAKE SYNDICATE



LYNX GROUP

105-E-1, Whitehorse M. D.



Yukon Territory

This report has been examined by the Geological Evaluation Unit and is recommended to the Commissioner to be considered as representation work in the amount of \$ 3102.72

*[Signature]*  
Resident Geologist or  
Resident Mining Engineer

Considered as representation work under  
by Section 53 (4) Yukon Quartz Mining Act.

P. H. Sevensma, Ph. D., P. Eng.

*[Signature]*  
Commissioner of Yukon Territory  
ADMINISTRATOR OF THE YUKON TERRITORY

Peter H. Sevensma Consultants Ltd.

December 9, 1974



## TABLE OF CONTENTS

1.	INTRODUCTION .....	1
2.	PROPERTY, LOCATION, ACCESS .....	2
3.	HISTORY .....	3
4.	GEOLOGY .....	4
5.	1974 PROGRAM .....	7
6.	1974 SOIL SAMPLING .....	8
7.	GEOPHYSICAL SURVEY .....	10
8.	PROPOSED PROGRAM & COST ESTIMATE .....	12
9.	SUMMARY AND RECOMMENDATIONS .....	14

-----

### Illustrations

Fig. 1	Location map	1" = 90 m.
Fig. 2	Value map, ppm Cu	1" = 400'
Fig. 3	Summary map	1" = 400'
Fig. 4	Diagram possible genesis	Misc.

LOON LAKE SYNDICATE

LYNX GROUP

105-E-1, Whitehorse M. D., Y. T.

1. INTRODUCTION

The Lynx claims cover old copper-gold showings known since the late 1890's, above the northwest shore of Upper Loon Lake, 45 miles northeast of Whitehorse.

In 1970, when the group was known as the Beaver-Mink, the writer conducted a work program on these claims on behalf of Colorado Corporation.

Since that time, the ground came open and was restaked as the Lynx Group.

The writer spent the period August 28 to September 5, 1974, on the property to position the claims and the old grid on a map made from air photos on a scale of 1" = 400', recutting existing grid lines, to soil-sample areas previously not worked, and to reassess the geological environment.

This report summarizes the results of this work.

2. PROPERTY, LOCATION, ACCESS

The Group consists of the following claims:

<u>Name</u>	<u>Record No.</u>	<u>Date Staked</u>	<u>Date Recorded</u>
Lynx 1 - 8	Y67873 - 880	Dec. 23, 1972	Dec. 27, 1972
Lynx 9 - 16	Y79302 - 309	May 31, 1974	June 18, 1974

The claims lie on claim sheet 105-E-1, 45 airmiles NE of Whitehorse, at about Latitude  $61^{\circ} 12'$  north and Longitude  $134^{\circ} 11'$  west, between elevations 3300' and 4400'.

Access is by float-plane from Whitehorse. A suitable camp location on Loon Lake is about 1500' from the showings. There is abundant drill water and good timber with up to 20" butts on the property.

The area is one of moderate snowfall.

### 3. HISTORY

Claims have been staked on the malachite showings which mark the occurrence as early as the 1890's. Some time around 1905-1915, several adits were driven by the Livingstone placer miners. In 1907, D. D. Cairnes notes that the lower adit exceeded 180' and reached perhaps 270'. The upper adit was 50' long at the time. Cairnes reported also "quartz bodies" up to 70' wide with some disseminated pyrite, chalcopyrite and patches of malachite.

The writer examined the area in 1969 and conducted a program of linecutting, soil sampling, mapping and minor I. P. work on some of the area covered by the present claims, on behalf of the Colorado Corporation. Due to financial difficulties, this company let the claims lapse.

No other work has ever been carried out.

A number of years ago, old time prospectors familiar with the property informed the writer that the longest of the old tunnels had intersected much copper mineralization, i. e. , some 85' of 2-2.5% Cu, but the writer has not been able to obtain specific documented information on this matter.

It should be noted that linecutters in 1970 used the notation North and South on the pickets instead of East and West. The writer has maintained these notations for practical reasons, South corresponding to West, North to East.

#### 4. GEOLOGY

The property covers part of an outlier some six to eight miles long of Yukon Schists, sticking out like a finger in the Whitehorse trough, which is formed in this area by a thick sequence of Hutshi Volcanics overlying (?) Triassic Lewis River limestones. Recently the Hutshi Volcanics are considered of Permo-Triassic age rather than Upper Cretaceous (G. S. C. Open File 209).

In this general area, the Yukon Schists are known as the Big Salmon Complex, which comprises quartz-biotite, chlorite and sericite schists, fine grained quartzites, greywackes, occasional limestone with Mississippian fossils, sheared granodiorite and peridotite. Metavolcanics may be present.

To the east, this complex is intruded by the Quiet Lake batholith, 40 miles long by some 15 miles wide, a small offshoot of which lies about 1-1/2 miles southeast of the Lynx Group.

The premetamorphic age of the Big Salmon Complex is not known, but may be Devonian-Mississippian. The formations may be Meta-Sylvester, but the paucity of volcanics would distinguish it from the normal Sylvester as developed in the Cassiar Mountains and further east in the Yukon.

The Lynx Group is underlain by an assemblage of sericite-chlorite schists derived from argillaceous rocks and by a light coloured fine grained quartzite often of a cherty appearance. These formations do inter-finger somewhat and the quartzites also grade into greywackes, sometimes with fragments as large as 5 mm.

Sheared grano-diorite or diorite, intensely chloritized, occurs in the quartzite near its contact with the schists.

Some of the quartzite has a rhyolitic appearance; these particular outcrops are very rugged and steep and practically unmappable. They could be segments of a pre-fold acid dyke.

The formations form a broad fold, swinging from the normal NW strike to a NE one and back again, with an amplitude of 1/2 mile or so. This fold appears cut by a NE fault, but not much is known about its nature of displacement; it could be a bedding-plane thrust.

The beds dip in general steeply at  $55^{\circ}$ - $75^{\circ}$  to the SW or NW, depending upon the strike, but local large scale drags are suggested by some NE dips. Foliation cleavage is very difficult to distinguish from bedding, and in at least one location they appear to be at about right angles to each other.

The mineral showings are of three types: disseminated chalcopyrite and some pyrite in the quartzite; crudely banded patchy chalcopyrite and pyrite in schist, usually with some quartz; specks of chalcopyrite in quartz "worms" and veinlets. In addition there are barren milky white quartz veins, usually of a shallow dip of the order of  $20^{\circ}$ - $30^{\circ}$  within the quartzites, or inter-bedded in the schists.

Some areas are highly silicified, and some have the appearance of a rhyolite breccia.

Further geological work will require a certain amount of petrographic work to define the various rock types.

Mineralization is definitely related to the schist-quartzite contact. In its vicinity, much material assaying from 2-7% Cu may be found in old trenches at about L 17, 200 N (=E); in the mineralized quartzite, grades vary from 0.1 to 0.5 Cu mostly, but may rise as high as 1%.

Due to the nature of the rock and the state of the showings, representative sampling is practically impossible without substantial trenching.

Near the old tunnels between lines 18 and 20 some 700'-800' east of the baseline, fine-grained patches of chalcopyrite, usually associated with schist fragments, occur in the vein-type quartz. This is the material which attracted the old-time gold prospectors.

Assays of mineralized material usually show fair gold values, but very little silver. Typical assays of 6-12 lb. samples are:

Mineralized quartzite across 35': .47 Cu, tr. Au, .2 Ag.

Good grade schist from trenches: 4.7% Cu, .12 Au.  
3.8% Cu, .09 Au, .7 Ag.

The most spectacular outcrop is a 35' wide zone of cherty quartzite, heavily stained with light brown limonite, abundant malachite and occasional azurite, and is completely devoid of vegetation. Intermittent chalcopyrite is found across the formation for some 600' to the west, where high grade is found in patches and shears in schist across an overall width of some 50' in an area of light overburden and vegetation.

The main adit is marked by an old wheelbarrow, and started to cross this formation in a westerly direction. Very little mineralized material is found on the dump, but this adit is said to have run out of the mineralization. It is now caved.

The presence of greywacke suggests to the writer that turbidite currents may have been active at the top of silty argillites subsequently recovered by greywackes and quartzites, with mineralization

perhaps controlled by turbidite channels. At present this appears as the more attractive working hypothesis. Outside of the broad large scale fold and the schist-quartzite contact, there is not enough geological information available as yet to develop a more useful hypothesis as to the possible origin and type of this deposit.

However, the showing is impressive, the area affected is large and there is an excellent broad structure holding promise of a large type of deposit.

#### 5. 1974 PROGRAM

As an initial step, an airphoto topo map has been prepared to assemble all the data now available, consisting of geological, geophysical and geochemical information.

The next phase consisted of cleaning up or extending that part of the old grid lines where no surveys had been carried out previously, and to tie the grid to the topo map.

The third phase was constituted by soil sampling that part of the land to the west of the base-line that had not been sampled previously.

This program was carried out by the writer during the period August 28th to September 5th, 1974.

## 6. 1974 SOIL SAMPLING

113 soil samples were taken in that part of the grid where the presence of a major axial plane of the broad fold was suspected, to determine whether any outcrop was present or if any geochemical copper anomalies could be detected to firm up the suspected structure.

The area was found to be quite heavily overburdened and only one small area of near-outcrop was found.

The soil profile from the surface down was found to consist of the following:

1. Surface moss, peat and humus: 4"-20"
2. Volcanic ash: 0-10"
3. Black prevolcanic humus: 0-12"
4. Brown loam, often missing: 0-over 12"
- 5<sup>a</sup>. Waterworn gravels or glacial till
- 5<sup>b</sup>. Occasionally decomposed bedrock near outcrop.

This generalized profile led to the conclusion that over much of the area the overburden is probably too thick to reveal much in the way of soil anomalies.

Samples were taken with a stainless steel trowel in holes dug by pick, frequently to depths of as much as 20", and put in kraft bags which were dried in camp.

Assaying was done by Atomic Absorption by Whitehorse Assay Office's standard method. All samples were run for copper, lead, zinc and molybdenum.

A review of the sample results, as well as of the results of previous soil sampling indicates clearly that 40 ppm Cu is a significant threshold and that values over the 50-60 range are anomalous. Peak value in the 1974 survey was 236 ppm Cu, starting within the edge of a known anomaly. Sample distribution was as follows:

<u>ppm Cu</u>	<u>No. Samples</u>	<u>ppm CU</u>	<u>No. Samples</u>
0 - 9	2	50 - 59	4
10 - 19	5	60 - 69	8
20 - 29	36	70 - 79	3
30 - 39	39	80 - 89	1
40 - 49	13	Over 90	2

In the previous survey, a value of 60 ppm was used to outline the anomalous area, and lowering this limit to the present 50 only affected 7 samples out of 381, showing clearly the presence of one population of up to 40 ppm, and one population of over 60 ppm. All but two of these 7 samples were on the edge of an anomaly or on an indicated geological trend beyond an anomaly.

It is most remarkable that the 18 relatively weak anomalous values found in the 1974 survey are as follows:

10 outlining the connection between the C and A zones of maximum chargeability and apparently indicating the schist-quartzite contact with the highest copper and highest chargeability on the nose of the broadfold at L 44, 0-300' S.

3 are checks within a previously known anomaly.

5 suggest anomalous conditions along the west edge of the grid between lines 34 and 44.

Pb, Zn and Mo do not appear to be of any value in this area.

The coincidence of the geological, geophysical and geochemical data now produces a very coherent picture. The logical next steps in the exploration of this property are as follows:

1. Extend the grid to Fish Creek, starting with lines 800' apart.
2. Soil sample this grid.
3. Map this grid.
4. Consider fill-in I. P. from line 24 to line 40, inclusive, and the survey extension west of the base line on lines 44-52.
5. Follow-up some outlying anomalies, especially 300 ppm Cu on line 75, 100' S (=W), and the west end of line 40.

#### 7. GEOPHYSICAL SURVEY

A limited I. P. survey was run by McPhar Geophysics in 1970, covering the showing area between lines 8 and 20 inclusive and a geochemically active area between lines 44 and 52 inclusive, as follows:

<u>South Area</u>		<u>North Area</u>	
Line 8	4W to 7E	Line 44	3W to 12E
Line 12	3W to 11E	Line 48	2W to 16E
Line 14	0 to 17E	Line 52	4E to 20E
Line 16	3W to 19E		
Line 20	3W to 21E		

Six anomalous zones were outlined. In the presence of both narrow (?) high-sulphide zones and wide low-sulphide zones, specific interpretation, without other electrode spreads than the 200' used, is impossible.

The axis of these zones are shown, and their characteristics are as follows:

<u>Zone</u>	<u>Strongest at</u>	<u>Depth</u>	<u>Maximum Metal Factor</u>	<u>Value</u>
A	L 44, 2W	Less than 200'	54	Good
	L 48, 2E	" " "	78	Small
B	L 44, 10E	" " "	31	Weak
C	L 16, 2E	Deep, 200'	32	Weak
D	L 14, 6E	Medium	40	Fair
E	L 14, 12E	Deep, 200' & over	107	Strong
This is the best one of the survey.				
F	L 52, 20E	Medium	66	Open to E.
At L 52, 15E, edge of geochemical anomaly, open to E.				

As the survey stopped at 300W on Line 44 and 100W on Line 48, the A zone is poorly defined. This area is the nose of the broad fold and shows strong geochemistry, all coinciding with the quartzite-schist contact, with values of several hundred ppm Cu.

The 1974 geochemical survey has left little doubt that A and C reflect parts of the same zone, and there is a very strong presumption that D and B may be correlated.

E is a remarkable zone, with a suggestion that at 200'-300' depth it connects to D, as the frequency effect in the presence of low resistivity at depth covers 800' on Line 16 and 1000' on Line 20. These frequency effects are of the order of 3.5 to 5.0%.

The 1974 survey also has permitted the reinterpretation of the original McPhar zones somewhat in line with formational and geochemical features.

The data now indicate that it is essential to complete the geochemical and geological mapping between their present East boundary

and Fish Creek, covering the potential relationship between the E and F conductors and associated copper soil anomalies.

It is conceivable that this information could either lead to drilling or to additional I. P. surveying with possibly a larger electrode spread. At present, core-hole drilling is considered premature; even firming up of present targets by deeper I. P. may be advantageous.

8. PROPOSED PROGRAM AND COST ESTIMATE

The following is recommended for a one month field program:

Line cutting, 10 line miles @ \$200. 00	\$ 2, 000. 00
500 Soil samples @ \$6. 00	3, 000. 00
Mapping, 2 man months @ \$2, 500. 00	5, 000. 00
Surveying for tie-ins, 10 days @ \$200. 00	2, 000. 00
Camp installation, 4 men plus cook, 3 tents	2, 000. 00
Camp operation, 120 man days @ \$15. 00	1, 800. 00
Charter aircraft	1, 500. 00
CP Air, crew (de-) mobilization	1, 200. 00
Cook's wages	1, 000. 00
Assaying of ore-samples	<u>500. 00</u>
	\$ 20, 000. 00
Contingencies, 15%	3, 000. 00
Engineering, 10%	<u>2, 300. 00</u>
Total field budget . . . . .	<u>\$ 25, 300. 00</u>

Phase 2 and 3 may be as follows:

<u>2.</u> I. P. Surveying, all inclusive	\$ 10, 000. 00
<u>3.</u> Core drilling, 3000' @ \$16. 00	\$ 50, 000. 00

Two additional techniques should be kept in mind, i. e. , hand trenching and opening of the old adit.

The writer, however, thinks that the proposed program should be completed first to obtain a balanced knowledge of all possible areas of interest.

The best time to start this program is shortly after break-up, which usually occurs during the last week of May.

I. P. Surveying could be done in July and drilling started in August. However, a cat can only be brought in from Livingstone Creek, and if no spare is available it would have to be moved in in winter, in which case a March 1st start for drilling is more advisable.

Some of the drilling at the edge of Fish Creek can be done without a cat and if the area west of the base line between Lines 40 and 52 is to be drilled, a helicopter can move the drill into the valley in the vicinity of Line 48, where there is a large, albeit somewhat swampy, flat.

Unravelling of the geological information is considered crucial, as two main periods of folding affect the area, i. e. , strong regional folding with NW axial planes preceded by dioritic intrusions and possibly acid dykes, and a later stage of cross-warping with more nearly E-W axial planes. (see diagram fig. 4.)

9. SUMMARY AND RECOMMENDATIONS

The 1974 field program on the Lynx Group has conclusively shown that the major part of the copper mineralization is controlled by the schist-quartzite contact; a pre-fold acid dyke could be a factor, too.

In the area of the strongest I. P. anomaly, labelled "E", no schists have been observed on surface. This contact could occur at greater depth, especially if significant folding occurs in this area. This could be a large scale dragfold, "E" overlying the crest of an anticline.

The potential of the property appears large. The C - A contact structure is 4000' long and this length could be duplicated on the east side by the E - F structure. Folding seems to control the higher grade mineralization, but this could also be due to primary channelling by, for instance, turbidite current channels between the schist and the quartzite.

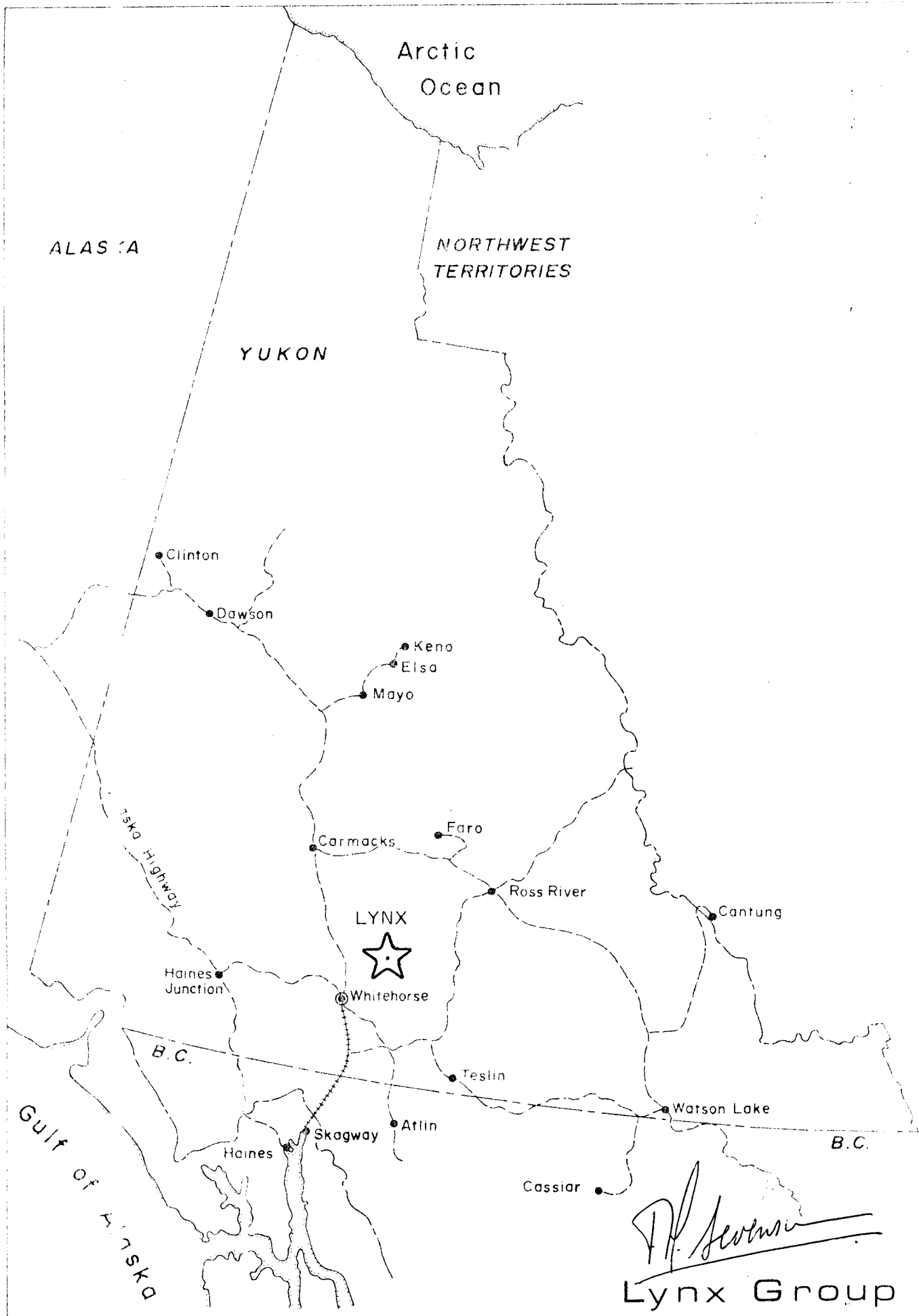
A continuing geological-geochemical program is recommended at an estimated field cost of \$25,300.00

The writer has an interest in this property.

Respectfully submitted,

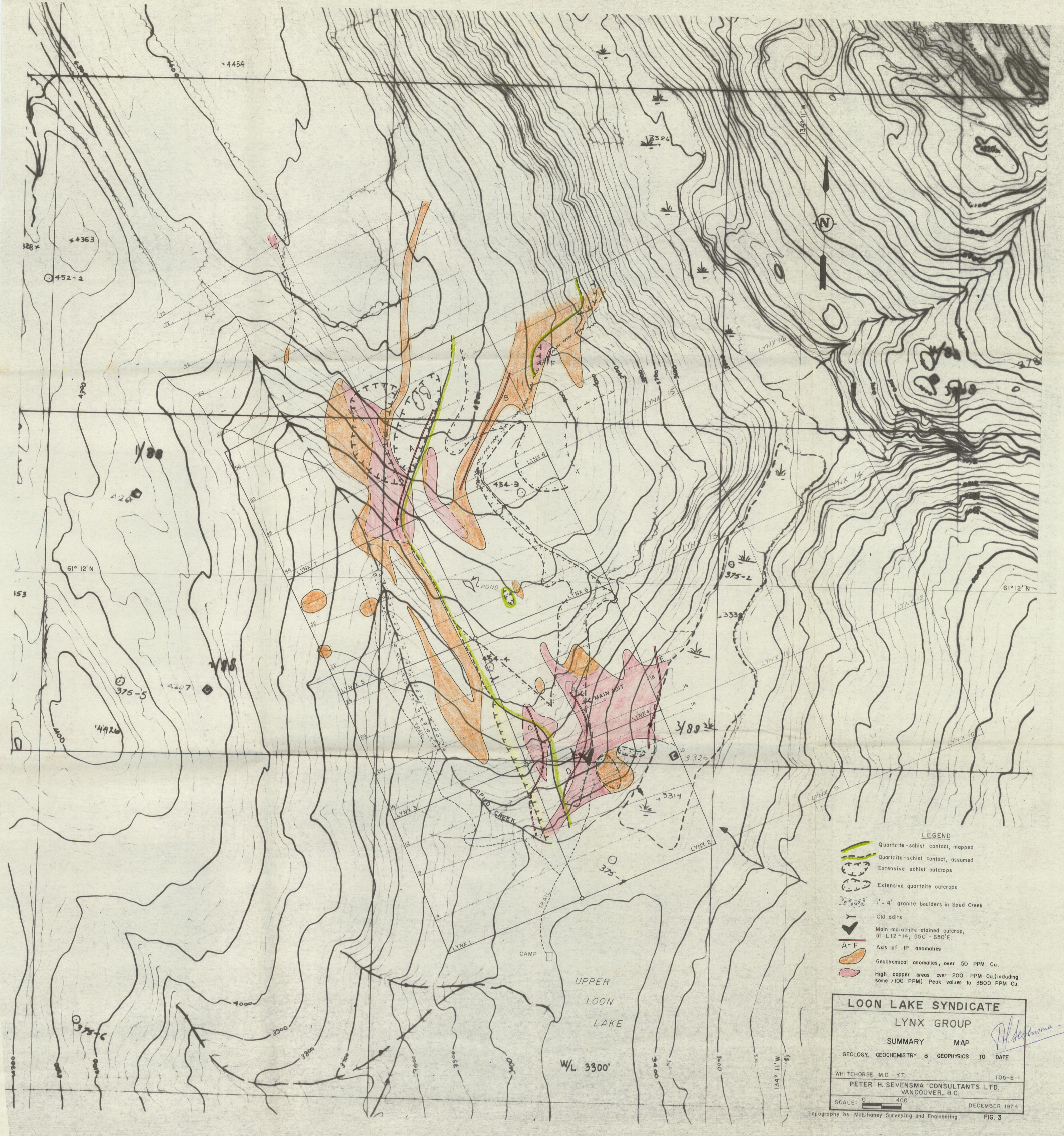
A handwritten signature in dark ink, appearing to read "P. H. Sevensma". The signature is written in a cursive style and is positioned above a horizontal line.

P. H. Sevensma, Ph. D. , P. Eng.



*P. H. Sevensma*  
**Lynx Group**





- LEGEND**
- Quartzite-schist contact, mapped
  - Quartzite-schist contact, assumed
  - Extensive schist outcrops
  - Extensive quartzite outcrops
  - 1' - 4' granite boulders in Spud Creek
  - Old adits
  - Main malachite-stained outcrop, at L12-14, 550' - 650' E.
  - Axis of IP anomalies
  - Geochemical anomalies, over 50 PPM Cu.
  - High copper areas over 200 PPM Cu. (including some >100 PPM). Peak values to 3800 PPM Cu.

**LOON LAKE SYNDICATE**

**LYNX GROUP**

**SUMMARY MAP**

GEOLOGY, GEOCHEMISTRY & GEOPHYSICS TO DATE

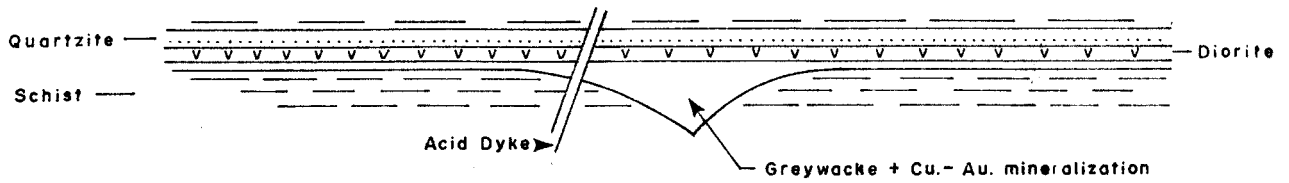
WHITEHORSE M.D. - Y.T. 105-E-1

PETER H. SEVENSMA CONSULTANTS LTD.  
VANCOUVER, B.C.

SCALE: 0 400 DECEMBER 1974

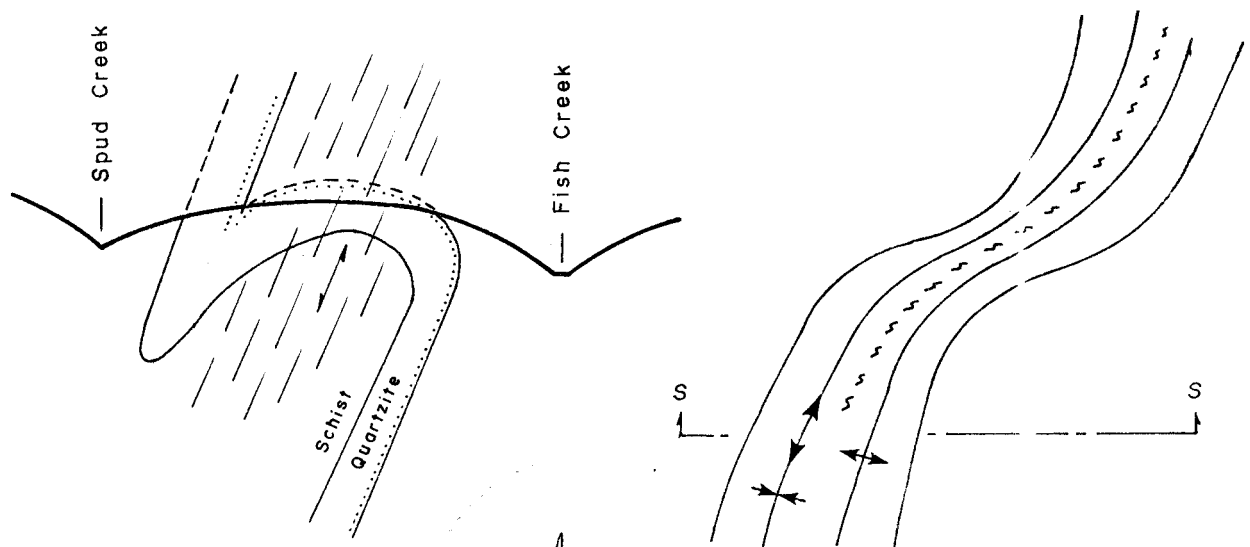
*P.H. Sevensma*

LYNX GROUP, Diagram of Possible Origin



Section normal to possible turbidite channel

scale 1" = ±3000'



SECTION  
1" = ±1000'

PLAN  
1" = ±2000'

*P.H. Sevensma*

LYNX GROUP - STRUCTURE		
Whitehorse M.D., Y.T.		105 C-
Peter H. Sevensma Consultants Ltd., Vancouver, B.C.		
DEC. 1974	Scale: <u>as noted above</u>	Fig: 4

APPENDIX "A"

STATEMENT OF EXPENDITURES  
incurred in conducting a  
Geochemical-Geological Program  
of work on  
THE LYNX GROUP  
of Mineral Claims  
Claim Sheet 105-E-1, Whitehorse M. D., Y. T.

1. FIELD COSTS

Geologist, P. H. Sevensma, Aug. 29-Sept. 5, incl. 8 days @ \$100. 00	\$ 800. 00
Assistant & Cook, E. H. Sevensma 8 days @ \$30. 00	240. 00
Yukon Air, 1 trip in, 1 trip out, Aug. 29 & Sept. 5	170. 00
? Groceries ( <u>Safeway</u> , Whitehorse)	\$ 109. 15
Camp equipment (Whitehorse stores)	125. 52
2 nights hotel (Capital)	36. 00
Cabs	9. 50
Meals & miscellaneous	<u>60. 00</u>
Total Supplies	340. 17
Whitehorse Assay Office, 113 soil samples	264. 00
Rental Topofil	<u>25. 00</u>
Total field costs	\$ 1,839. 17

2. OFFICE COSTS

McElhanney, airphoto-topomap, 1" = 500'	\$ 751. 65
Western Reproducers, field copies (14895 & 27868)	48. 98
Superior Reproductions, Mylar maps	77. 62
Active Drafting, drafting final maps	350. 92
Typing and Xeroxing	<u>39. 38</u>
TOTAL COST	<u>\$ 3,107. 72</u>

  
\_\_\_\_\_  
P. H. Sevensma

P. H. Sevensma, Ph. D., P. Eng.

APPENDIX "B"

List of Personnel and Firms Employed  
conducting a program of work on

THE LYNX GROUP  
of Mineral Claims

Claim Sheet 105-E-1, Whitehorse M. D., Y. T.

McElhanney Surveying and Engineering	Air-photo Map	August 1974
Western Reproducers	Field Maps	July-August 1974
Yukon Air, Whitehorse	Transportation	Aug. 29, 1974
P. H. Sevensma	Field Geologist	Aug. 29 to Sept. 5, 1974
E. H. Sevensma	Cook & Assistant	Aug. 29 to Sept. 5, 1974
Whitehorse Assay Office	Geochemical Analysis	Sept. 6-14, 1974
Superior Reproductions	Mylar Maps	December 1974
Active Drafting	Map Drafting	Dec. 12-18, 1974



P. H. Sevensma

P. H. Sevensma, Ph. D., P. Eng.

WHITEHORSE ASSAY OFFICE  
 BOX 4578  
 WHITEHORSE, YUKON

Actual location  
 ↓

Picket lines  
 ↓

Samples from: P.H. SEVENIMA

Lot. No.: A-726-

ALL RESULTS - P.P.H.

	SAMPLE #	Cu	Pb	Zn	SAMPLE #	TR	
L 48	100' W 1	236	28	96	1	TR	L 48 - 100'S
	200' W 2	44	12	16	2	TR	200'S
	300' W 3	144	16	56	3	1	300'S
	570' W 4	36	12	56	4	TR	570'S
	700' W 5	28	16	56	5	TR	700'S
	800' W 6	36	8	40	6	1	800'S
	900' W 7	28	12	64	7	1	900'S
	1000' W 8	24	8	48	8	1	1000'S
	1100' W 9	48	8	64	9	1	1100'S
	1200' W 10	50	12	56	10	1	1200'S
	1500' W 11	36	12	56	11	1	1500'S
47	1400' W 12	32	12	56	12	2	47 1400'S
46	1400' W 13	32	8	56	13	1	46 1400'S
45	1400' W 14	12	8	24	14	1	45 1400'S
44.5	1400' W 15	28	12	80	15	1	44.5 1400'S
L 44	1400' W 16	32	12	64	16	1	44 1400'S
	1300' W 17	24	8	40	17	TR	1300'S
	1200' W 18	20	8	40	18	TR	1200'S
	1100' W 19	32	20	64	19	1	1100'S
	1000' W 20	12	8	48	20	1	1000'S
	900' W 21	28	24	56	21	1	900'S
	800' W 22	28	12	56	22	TR	800'S
	650' W 23	16	8	40	23	TR	650'S
	600' W 24	28	12	72	24	1	600'S
	500' W 25	12	4	40	25	TR	500'S
	400' W 26	50	12	56	26	TR	400'S
L 32	900' W 27	28	12	48	27	TR	32 900'S
	500' W 28	56	16	56	28	TR	500'S
	400' W 29	28	12	32	29	1	400'S
	300' W 30	52	12	56	30	1	300'S
	200' W 31	72	20	72	31	1	200'S
	100' W 32	12	12	32	32	TR	100'S
L 28	100' W 33	8	4	8	33	TR	28 100'S
	200' W 34	36	12	48	34	TR	200'S
	300' W 35	36	8	24	35	1	300'S
	500' W 36	68	8	40	36	1	500'S
28-800	W Silt 37	36	8	56	37	1	Main Cr 800'S
28-935	W Silt 38	32	16	72	38	TR	West Face 935'S
	1100' W 39	32	20	40	39	TR	1100'S
	1200' W 40	28	16	48	40	1	1200'S

Date: Sept 14/74

Assayer: P.H. Sevensma  
R. F. ...

WHITEHORSE ASSAY OFFICE  
 BOX 4518  
 WHITEHORSE, YUKON

Actual location  
 ↓

Vicket marks  
 ↓

Samples from: P. H. SEVENSIMA

Lot. No.: A-726

ALL RESULTS - PPM.

	SAMPLE #	Cu	Pb	ZN	MLD			
L 28	1300W 41	28	12	43		1	L 28	1300' S
	1400W 42	28	8	40		1		1400' S
	1500W 43	32	8	56		1		1500' S
L 40	650W 44	36	8	48		1	40	650' S
	760W 45	40	12	56		1		760' S
	860W 46	28	8	48		1		860' S
	960W 47	36	8	40		1		960' S
	1050W 48	28	8	40		1		1050' S
	1150W 49	24	8	48		2		1150' S
	1230W 50	76	44	32		2		1230' S
	1350W 51	60	8	72		1		1350' S
	1450W 52	60	4	56		1		1450' S
	1530W 53	32	8	64		1		1530' S
	1620W 54	32	8	48		1		1620' S
39	1500W 55	48	16	48		2	39	1500' S
36	1500W 56	32	16	72		2	36	1500' S
35	1500W 57	36	12	40		1	35	1500' S
34-1500	Creek bank 58	60	12	48		2	34	1500' S
L 36	1400W 59	32	12	40		2	36	1400' S
	1300W 60	32	20	72		2		1300' S
	1200W 61	40	16	64		2		1200' S
	1100W 62	26	12	56		1		1100' S
	1000W 63	36	12	56		1		1000' S
	880 64	60	16	72		2	950'	880' S 880'
	760 65	44	12	56		3	860'	760' S 760'
	660 66	24	8	48		2	660'	660' S
36-620	Silt 67	24	8	48		2	Main Cr. L 38	730' S
L 24	100W 68	24	12	56		2	L 24	100' S
	225W 69	84	8	40		3		225' S
	300W 70	40	8	32		2		300' S
	400W 71	60	12	40		1		400' S
	500W 72	72	12	96		2		500' S
	600W 73	68	44	80		1		600' S
	700W 74	28	12	32		1		700' S
800W	Silt 75	40	12	64		1	Main Cr.	800' S
	860W 76	28	8	48		1		860' S
	1000W 77	24	8	48		1		1000' S
	1100W 78	32	8	48		1		1100' S
	1200W 79	32	8	56		TR		1200' S
	1300W 80	30	8	48		TR		1300' S

*P. H. Sevensima*

Date: Sept. 14/74

Assayer: P. K. ...

WHITEHORSE ASSAY OFFICE  
BOX 346  
WHITEHORSE, YUKON

Actual location  
↓

Picket lines  
↓

Samples from: P. H. SEVENSON

Lot. No.: A-726-

ALL RESULTS - P.P.M.

SAMPLE #	Cu	Pb	Zn	Mg			
L24 1400W 81	24	8	48	TR		L 24	1400'S
1500W 82	14	12	56	TR			1500'S
24-1600W Silt 83	36	16	56	TR	Sm. Creek		1600'S
L 32 590W 84	32	8	40	TR		L 32	590'S
660W 85	36	8	56	TR			660'S
800W Silt 86	32	8	48	TR	Main Cr		800'S
1100W 87	24	12	48	TR			1100'S
1200W 88	32	12	64	TR			1200'S
1300W Silt 89	28	12	56	1	1 1/2' stream		1300'S
1435W Silt 90	48	12	64	1	3' stream		1435'S
1500W 91	44	8	72	TV			1500'S
1600W 92	48	12	72	TV			1600'S
1700W 93	24	8	56	1			1700'S
31 1500W 94	32	8	56	TV		31	1500'S
30 1500W 95	36	12	56	TV		30	1500'S
29 1500W 96	32	12	56	TV		29	1500'S
L 20 1000W 97	32	16	64	1		L 20	1000'S
1100W 98	20	14	60	TV			1100'S
1200W 99	32	8	56	TV			1200'S
1300W 100	20	12	48	TV			1300'S
1400W 101	24	8	56	TV			1400'S
1500W 102	40	12	48	TV			1500'S
10-800W Silt 103	32	12	56	TV	Spring	L 10	800'S
L 20 100W 104	28	8	40	TV		L 20	100'S
200W 105	8	8	40	1			200'S
300W 106	24	4	48	1			300'S
400W 107	60	12	56	1			400'S
500W 108	56	12	48	2			500'S
600W Silt 109	36	12	56	1	Main Cr		600'S
700W 110	28	12	56	1		700'	<del>800'S</del>
20-820 Silt 111	32	8	56	TV	Main Cr		820'S
880W 112	24	8	56	TV			880'S
BL-700W Silt 113	36	20	64	1	Main Cr	BL	700'

Note: For all samples 1-113, the notation S = South is actually to the West, as the original pickets were so marked. Similarly, in the field, N = North stands for East.

P. H. Severson

P. H. Severson

Date: Sept 14/74

Assayer: R. East for G. Spalding