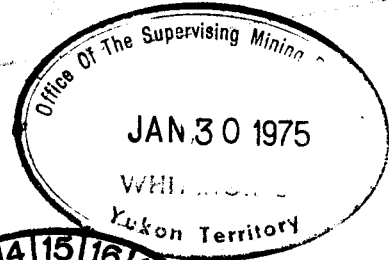


GEOLOGICAL - GEOCHEMICAL EVALUATION REPORT



ON THE

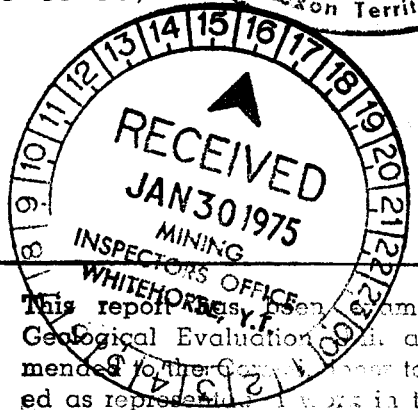
BID CLAIM GROUP



(BID 7 to 14, BID 25 to 32, BID 43 to 50)

MAYO MINING DISTRICT
Yukon Territory

N.T.S. 106-C-7 & 8
(64°26'N, 132°30'W)



July 15th - 25th, 1974

This report has been examined by Geological Evaluation and is recommended to the Government to be considered as representing work in the amount

FOR

\$ 8400.00

D. B. Craig

SICINTINE MINES LTD. (N.P.L.)

Resident Geologist or
Resident Mining Engineer

Royal Centre, P.O. Box 1117
1055 West Georgia Street
Vancouver, B.C.

Considered as representation work under
Section 53 (4) Yukon Quartz Mining Act

BY

[Signature]
Commissioner of Yukon Territory

C. M. Hamilton, P.Eng.
Geologist

CORDILLERAN ENGINEERING LIMITED
1418 - 355 Burrard Street
Vancouver, B.C., V6C 2G8

OCTOBER, 1974

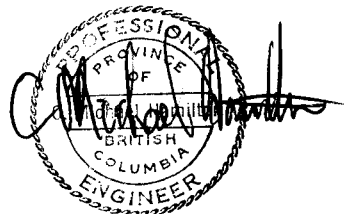


TABLE OF CONTENTS

	PAGE
INTRODUCTION	1
GEOLOGY	4
GEOCHEMISTRY	13
MINERALIZATION	17
EVALUATION	19

APPENDICES

<u>APPENDIX "A"</u>	References	
<u>APPENDIX "B"</u>	Personnel	
<u>APPENDIX "C"</u>	Claim Records	
<u>APPENDIX "D"</u>	Geochemical Lab Report	
<u>APPENDIX "E"</u>	Writer's Certificate	
<u>APPENDIX "F"</u>	Affadavit of Expenditures	
<u>APPENDIX "G"</u>	<u>Plates</u>	
<u>Plate 1</u>	- Claim Map	1"=1000'
<u>Plate 2</u>	- Geological Map	1"=1000'
<u>Plate 3</u>	- Zinc Content of Soils	1"=400'
<u>Plate 4</u>	- Lead Content of Soils	1"=400'

LIST OF FIGURES

<u>Figure 1</u>	Location Map	3
<u>Figure 2</u>	Generalized Stratigraphic Section	6
<u>Figure 3</u>	Photo: Bid claim group	12
<u>Figure 4</u>	Lead: Frequency Distribution ..	15
<u>Figure 5</u>	Zinc: Frequency Distribution ..	16

I N T R O D U C T I O N

This report describes the results of geological and geochemical investigations of 24 mineral claims located near the confluence of Goz and Duo Creeks in the Mayo Mining District, Yukon Territory ($64^{\circ}26'N$, $132^{\circ}30'W$). The project was carried out during July 15th through 25th, 1974, by Cordilleran Engineering Limited at the request of Sicintine Mines Ltd. (N.P.L.).

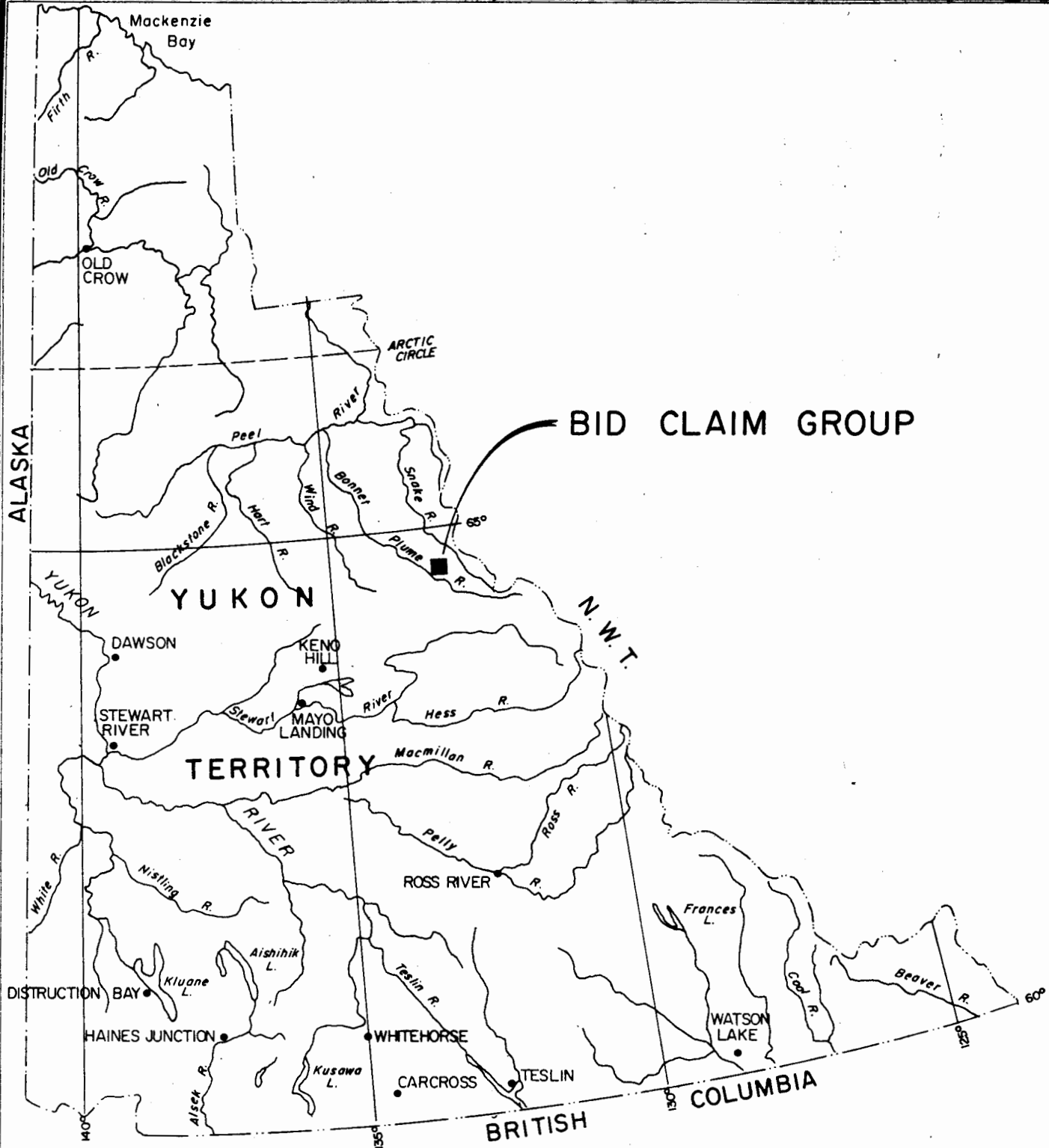
The overall aim of the project was to evaluate the mineral potential of the claim group by geological mapping, prospecting, and geochemical sampling. The claims are situated adjacent to Barrier Reef Resources "Goz Creek Property" where extensive lead-zinc mineralization occurs in a massive dolostone host unit.

The area is accessible by helicopter from Mayo,

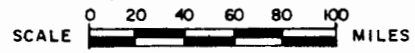
INTRODUCTION (cont'd)

Y.T. (130 miles) or by float plane to Goz Lake and thence by helicopter (7 miles) to the property. A base camp was established on Goz Creek immediately to the east of the property and occupied during the field work. Trans North Turbo Air, Ltd., Whitehorse, provided float plane support, maintained radio communications, and expedited supplies from Mayo. Helicopter support was provided by Northern Mountain Helicopters, Prince George, B.C.

The Bid claim group consists of 24 mineral claims including Bid 7 to 14, Bid 25 to 32, and Bid 43 to 50 which were recorded on August 21, 1973. The work described in this report has been submitted to the Mayo Mining Recorder to meet assessment requirements and, if acceptable, the claims will be in good standing until December 31, 1976. In addition to these claims, 10 fractional claims were staked and recorded on September 10, 1974. A complete list of claims and corresponding record numbers is contained in the appendix of this report.



LOCATION MAP SICINTINE MINES LTD. NPL



BY

CORDILLERAN ENGINEERING LTD.

1418 - 355 BARRARD STREET
VANCOUVER 1, B.C.

NOV. 1973

FIGURE 1

G E O L O G Y

The Bid claim group includes approximately 1.9 square miles of rugged alpine terrain which is underlain by a thick sequence of folded and faulted Lower Cambrian sedimentary rocks. Elevations range from about 3,800 feet (Goz Creek) to 6,087 feet (highest peak). A considerable portion of the area is above timberline and has good outcrop exposure.

The Nadaleen River Map-Area (N.T.S. 106-C) has been studied and mapped by S. L. Blusson and preliminary maps (G.S.C. Open File #206) are available. An earlier geological reconnaissance map of the Northern Selwyn Mountains was made by J. O. Wheeler (G.S.C. Paper 53-7) in 1953. These references provided a rough stratigraphic and structural basis for the present field work.

GEOLOGY (cont'd)

A geological map of the property was made using a 1"=1,000' scale airphoto print. This information was subsequently compiled (Plate 2) on a 1"=1,000' scale topographic enlargement of the 1:50,000 series government maps (106-C-8).

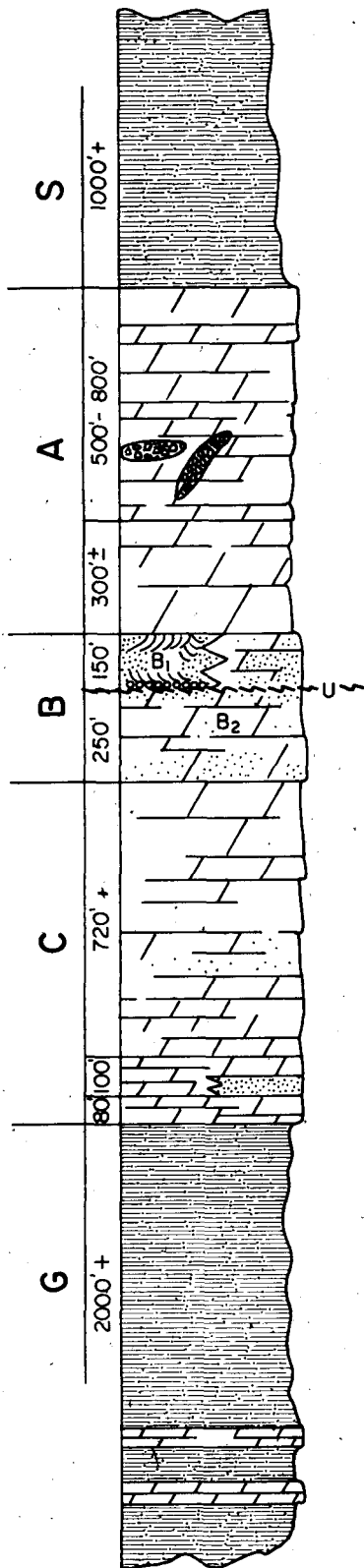
Regional deformation has resulted in a structural style that is characterized by predominantly west northwest trending fold axes and faults. The most important features are believed to be Late Mesozoic (Laramide) age and are the result of compressional forces oriented in a northeast-southwest direction.

A prominent northwest trending reverse fault occurs near the northeast boundary of the property and can be followed for at least 10 miles. Displacement on this fault is estimated to be between 100 to 300 feet with the north side upthrown. Several other faults with various orientations and displacements are also recognized within the carbonate block which underlies most of the property.

The local stratigraphy includes five distinct mappable units which are illustrated by Figure 2. These units are part of the Lower Cambrian section and are believed to be

GENERALIZED STRATIGRAPHIC SECTION GOZ CREEK AREA, YUKON TERRITORY

LOWER CAMBRIAN



QUARTZITE - SHALE: dark gray and brown, very thin-bedded to laminated, silty shale and quartzite. Non-resistant.

DOLOSTONE: buff weathering, variable textured, medium to light gray and mottled gray, very thick-bedded to massive, fine to coarse crystalline, locally pisolitic dolostone with some porous vuggy beds, minor chert. Sphalerite and minor galena occur locally as: matrix with silicified breccia, vug filling, disseminations, and fracture filling.

DOLOSTONE: buff weathering, medium to light gray and pinkish gray, thick-bedded, fine to microcrystalline micritic dolostone.

SANDSTONE (B₁): light gray to brownish gray, thin-bedded, fine to coarse grained crossbedded quartz sandstone, quartzite, with minor shale. Conglomerate at base with cobbles up to 2" dia.

SANDY DOLOSTONE (B₂): gray weathering, thick-bedded, arenaceous dolostone, locally pisolitic at top. Facies equivalent (in part) of B₁.

DOLOSTONE: light gray, thick bedded, fine crystalline, locally pisolitic dolostone with minor arenaceous lenses toward base.

DOLOSTONE: light gray weathering, thick-bedded, microcrystalline dolostone with local lenses of quartz sandstone.

DOLOSTONE: medium to dark gray, thin to thick bedded, fine to microcrystalline, banded dolostone.

SHALE: light brown and medium to dark gray, thin-bedded to laminated phyllitic shale and phyllite with some maroon siltstone and sandstone. Minor interbeds of dark gray, thin-bedded dolostone and limestone.

SCALE: 1 INCH = 500 FEET

FIGURE 2

GEOLOGY (cont'd)

a facies equivalent of the Sekwi Formation. They are described in ascending stratigraphic order as follows:

UNIT G

The rocks comprising Unit G are mostly light brown and medium to dark gray, thin-bedded to laminated phyllitic shale with some gray to maroon siltstone and sandstone. This unit also includes a few minor interbeds of dark gray, thin-bedded dolostone and limestone. This unit is nonresistant and generally forms negative topographic features such as the valley of Goz Creek. The phyllitic shales exhibit well developed cleavage, especially within areas of intense deformation near major faults. The lithologic contrast between the shales and the overlying carbonates allows accurate mapping of the contact boundaries. This contact is also readily discernible on the air photographs.

Unit G underlies the northeastern margin of the claim group and, although no stratigraphic sections were measured, it appears to be at least 2,000 to 4,000 feet in thickness. This unit does not have much potential as a host unit for lead-zinc deposits.

GEOLOGY (cont'd)UNIT C

Unit C conformably overlies Unit G and consists of resistant medium to light gray, thin-to thick-bedded, medium to microcrystalline calcareous dolostone. This unit contains locally porous, vuggy pisolitic beds and minor quartz sand. The pisolites are typically 3 to 4 mm diameter concentric spherules. The lack of a distinct nucleus (some specimens are hollow) suggests that these may be, in part, algal pisolites or oncolites. The depositional environment was most likely a relatively shallow carbonate shelf subject to strong submarine currents.

Facies changes are recognized in the lower portion of Unit C, particularly toward the west of the property where it contains sandstone and gray weathering, thin bedded arenaceous dolostone beds. The middle and upper parts of the unit show a more consistent regional pattern and are the predominant lithology.

A few minor traces of sphalerite and minor secondary smithsonite have been found in the middle part of Unit C a few miles to the west of the claim group. In addition, numerous minor occurrences and at least one important sphalerite-galena showing, located on the Barrier Reef Property, occur in the upper part of this unit. This showing is located approximately one mile southwest of the Bid claims and within the same carbonate block.

Unit C has recognizable potential as a host unit, however, no significant mineralization was found within this

GEOLOGY - Unit C (cont'd)

unit on the Bid claim group. The total thickness of Unit C was determined to be approximately 900 feet.

UNIT B

Unit B is comprised of two distinct members and is characterized by lateral facies changes. The lowest member (B_2), which ranges from 250 to 400 feet thick, consists of thick bedded to massive, gray weathering, locally pisolitic dolostone and arenaceous dolostone. It is often porous, vuggy, and contains considerably more coarse well-rounded quartz sand than the underlying Unit C. The conformable contact between Unit C and B is transitional and is represented by a gradual decrease in sand content downward. This boundary, which is often difficult to recognize, is taken to be the base of the lowest arenaceous dolostone.

The upper member (B_1) is a prominent resistant gray weathering dolomitic quartz sandstone and quartzite "marker bed" which disconformably overlies the lower member. The unit contains a few thin shale interbeds and is characterized by conspicuous tangential sets of cross bedding with some graded bedding. A thin basal conglomerate contains cobbles up to 2" in diameter and separates the two members. The thickness of the B_1 member ranges from 0 to 150 feet and grades southeastward into arenaceous dolostone (B_2 member). Where the upper (B_1) member is absent the disconformity is not obvious, but can be recognized in a few localities.

GEOLOGY - Unit B (cont'd)

Several occurrences of sphalerite and pyrite have been found in fractures within the B₂ member along Goz Creek on the Barrier Reef Property. The upper (B₁) member is essentially barren. No mineralization was found in the B Unit (undivided) which outcrops on the Bid claim group.

UNIT A

Unit A consists of buff weathering, massive, fine to coarse crystalline dolostone. The lower 300 feet of the unit is predominantly uniform textured micritic dolostone. The upper part is variable textured buff to mottled gray, massive, locally pisolitic dolostone with minor chert. The upper member is locally vuggy and contains silicified dolostone breccia. This member is considered the primary host unit for the mineralization on the Barrier Reef Property, where sphalerite and galena occur as breccia matrix, vug fillings, and disseminations.

Unit A has a total thickness of approximately 800 feet. An erosional remnant of the lower 300 feet of the unit occurs on the Bid claims (see Figure 3). Minor zinc mineralization was found near the summit of the highest peak, however, the more favourable upper part of Unit A is absent due to erosion.

GEOLOGY (cont'd)UNIT S

Unit S conformably (?) overlies Unit A and is composed of gray to brown, very thin-bedded to laminated silty shale and sandstone. No sections of this unit were measured, but it is believed to be approximately 1,000 feet in thickness. No outcrops of this unit are recognized on the Bid claim group.

GEOLOGY (cont'd)

FIGURE 3: Bid claim group. Aerial view looking west showing stratigraphic succession of Units A, B, and C.

G E O C H E M I S T R Y

A geochemical soil sampling programme was carried out to evaluate the favourable carbonate units underlying the property. Samples of talus fines were collected using a 200 foot spacing along three separate contour lines of varying elevations. A total of 130 samples were taken and submitted to Bondar-Clegg Ltd., Whitehorse, Y.T., for sample preparation and analysis. The samples were dried, sieved to -80 mesh, and analyzed for lead and zinc using standard atomic absorption methods. The sample locations and results are shown on Plates 3 and 4.

A frequency distribution plot (Figures 4 and 5) was prepared to aid in the interpretation of the analytical results and allow visual estimation of the background, threshold, and anomalous values for lead and zinc. The zinc results show a broad range (13 to 2,740 ppm) with moderately high background

GEOCHEMISTRY (cont'd)

(80 ppm). A total of 46 samples are anomalous, i.e., over 185 ppm, and 23 of these are considered strongly anomalous (over 500 ppm). The lead results show a normal distribution and most values are well within the range of background plus 3 standard deviations. Lead values range from 9 to 660 ppm and only 2 samples are considered anomalous, i.e., above 80 ppm.

A total of 4 rock samples were collected and analyzed for lead and zinc. The sample descriptions and results are contained in the appendix to this report. In addition, 6 rock chip samples were taken from one mineralized zone and submitted for assay. These results are discussed in a subsequent part of this report (see Mineralization).

LEAD

FREQUENCY DISTRIBUTION
SICINTINE MINES LTD. (NPL)
BID CLAIM GROUP

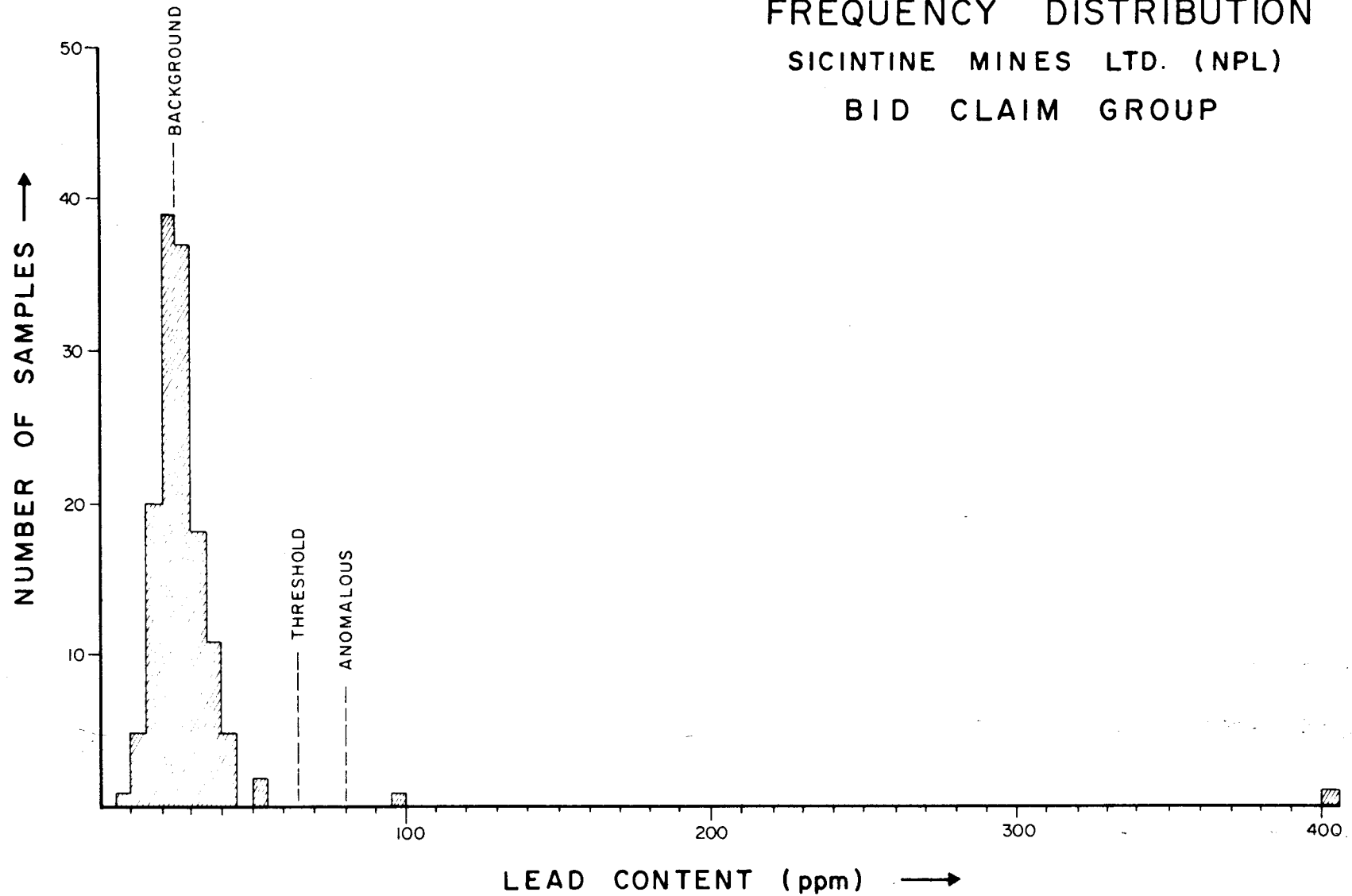


FIGURE 4

ZINC

FREQUENCY DISTRIBUTION
SICINTINE MINES LTD. (NPL)
BID CLAIM GROUP

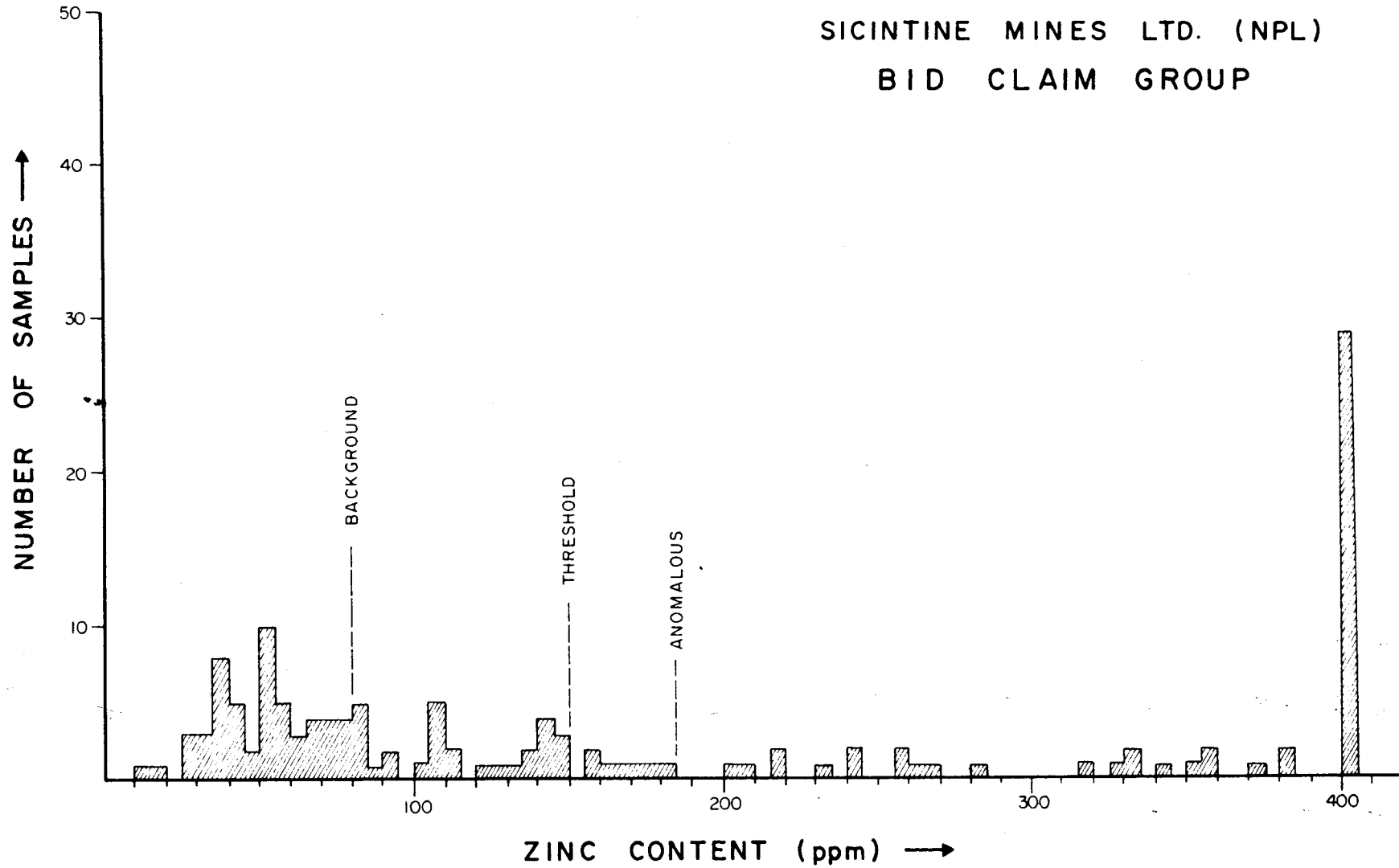


FIGURE 5

MINERALIZATION

A weakly mineralized gossanous zone was found on the Bid 25 claim at an elevation of 6,000 feet near the summit of the highest peak. At this locality smithsonite and hydrozincite occur with quartz as fracture fillings within Unit A. These vertical fractures strike 170 degrees with an average 6 inch to 10 foot spacing. These orientations are consistent with similar mineralized fractures found along Goz Creek on the Barrier Reef Property.

The initial "grab samples" (#4126-4127) which were collected assayed 29.2% and 11.2% Zn (total) respectively. The area was subsequently resampled (#4132 to 4135) using 10 foot sample intervals covering a 40 foot section of outcrop along the ridge crest. These rock chip samples provided a better average and the results show that the best section contains 2.68% Zn (total). A comparison of assays for total and soluble zine (see Appendix) indicates that most of the

MINERALIZATION (cont'd)

zinc occurs in the soluble form, either as smithsonite or hydrozincite. These are believed to be secondary weathering products after sphalerite, however, no visible sphalerite was identified in any of the samples. The presence of minor limonite suggests that weathered pyrite is associated with the mineralization, although no pyrite was identified.

EVALUATION

The Bid claim group is situated adjacent to Barrier Reef Resources "Goz Creek Property" where extensive lead-zinc mineralization occurs in a massive dolostone host unit (Unit A). A total of 20 diamond drill holes were completed in one area of the Barrier Reef property during the 1974 field season with encouraging results. In excess of 500,000 tons averaging 13% zinc in sulphides are indicated by drilling, and further exploration is planned for 1975.

A small erosional remnant of the lower portion of Unit A is present on the Bid claim group and contains minor zinc mineralization. The more favourable upper part of Unit A is absent due to erosion. The underlying units, which are present on the property, have some potential as evidenced by zinc occurrences within these units to the south.

EVALUATION (cont'd)

A broad zinc geochemical anomaly is recognized along the 4,500 foot contour (sample line "A"). This anomaly occurs on a steep northeast slope and is probably due to downslope dispersion (mechanical and chemical) from known mineralized areas occurring above the anomaly and within Unit A. The moderate values and widespread nature of the anomaly tends to support this interpretation. However, it is possible that the anomaly is simply due to widespread, but low grade, zinc enrichment within Unit C. Prospecting in this area produced negative results and no visible lead or zinc mineralization was found in Unit C. Follow-up prospecting on other lesser anomalies also produced negative results.

From an economic viewpoint, dolostone units having some potential for hosting stratabound zinc deposits are recognized on the Bid claim group. However, the presently available geochemical data, prospecting results, and geological mapping have demonstrated that this potential is rather limited. This is mainly due to the fact that the most favourable host unit (Unit A) has been largely removed by erosion.

EVALUATION (cont'd)

Additional work on the property is not recommended at this time.

Respectfully submitted

CORDILLERAN ENGINEERING LIMITED



C. Michael Hamilton

C. M. Hamilton, P.Eng.
Geologist

October, 1974

REFERENCESBLUSSON, S.L.:

- 1974: Preliminary geological map.
Nadaleen River Map-Area.
N.T.S. 106-C.
G.S.C. Open File 206.

WHEELER, J.O.:

- 1954: "A Geological Reconnaissance of the
Northern Selwyn Mountains Region,
Yukon and Northwest Territories."
G.S.C. Paper 53-7, 42 p.

PERSONNEL

C. M. Hamilton
1150 Jervis Street,
Apartment 2004
Vancouver, B.C.

- Geologist

E. F. Skoda
1805 Rosser Ave.
Apartment 1910
Burnaby, B.C.

- Mining Technician

D. Guichon
1523 Grand Blvd.
North Vancouver,
B.C.

- Assistant

CLAIM RECORD

<u>NAME</u>	<u>RECORD NUMBER</u>	<u>EXPIRY DATE</u>
Bid 7	Y 69958	December 31, 1976.
Bid 8	Y 69959	December 31, 1976.
Bid 9	Y 69960	December 31, 1976.
Bid 10	Y 69961	December 31, 1976.
Bid 11	Y 69962	December 31, 1976.
Bid 12	Y 69963	December 31, 1976.
Bid 13	Y 69964	December 31, 1976.
Bid 14	Y 69965	December 31, 1976.
Bid 25	Y 69976	December 31, 1976.
Bid 26	Y 69977	December 31, 1976.
Bid 27	Y 69978	December 31, 1976.
Bid 28	Y 69979	December 31, 1976.
Bid 29	Y 69980	December 31, 1976.
Bid 30	Y 69981	December 31, 1976.
Bid 31	Y 69982	December 31, 1976.
Bid 32	Y 69983	December 31, 1976.
Bid 43	Y 69994	December 31, 1976.
Bid 44	Y 69995	December 31, 1976.
Bid 45	Y 69996	December 31, 1976.
Bid 46	Y 69997	December 31, 1976.
Bid 47	Y 69998	December 31, 1976.
Bid 48	Y 69999	December 31, 1976.
Bid 49	Y 70000	December 31, 1976.
Bid 50	Y 70001	December 31, 1976.
Bid 55 Fr.	Pending	September 10, 1975.
Bid 56 Fr.	Pending	September 10, 1975.
Bid 57 Fr.	Pending	September 10, 1975.
Bid 58 Fr.	Pending	September 10, 1975.
Bid 59 Fr.	Pending	September 10, 1975.
Bid 60 Fr.	Pending	September 10, 1975.
Bid 61 Fr.	Pending	September 10, 1975.
Bid 62 Fr.	Pending	September 10, 1975.
Bid 63 Fr.	Pending	September 10, 1975.
Bid 64 Fr.	Pending	September 10, 1975.



BONDAR-CLEGG & COMPANY LTD.

1500 PEMBERTON AVE., NORTH VANCOUVER, B.C. PHONE: 985-0681 TELEX: 04-54554

Geochemical Lab Report

AUG 6 1974

Extraction Hot Aqua Regia

Report No. 44-80

Method Atomic Absorption

From Cordilleran Engineering Limited

Fraction Used -80 Mesh soils
-100 Mesh Rocks

Date July 31, *Sie-Bid* 19 74

SAMPLE NO.	Pb ppm	Zn ppm			SAMPLE NO.	Pb ppm	Zn ppm		
A 1	24	50			A 32	38	1920		
2	24	94			33	26	1540		
3	19	87			B 1	36	700		
4	19	32			2	29	690		
5	29	56			3	25	382		
6	25	80			4	24	258		
7	29	140			5	24	334		
8	30	56			7	30	760		
9	25	50			8	26	2120		
10	29	102			9	23	358		
11	36	148			10	21	520		
12	32	1500			11	22	50		
13	34	960			12	18	29		
14	24	66			13	16	35		
15	34	1080			14	23	138		
16	29	162			15	24	352		
17	24	340			16	26	54		
18	23	281			17	36	53		
19	25	39			18	22	44		
20	28	76			19	16	76		
21	28	67			20	12	50		
22	30	55			21	10	50		
23	34	47			22	24	380		
24	20	40			23	24	255		
25	30	107			24	17	58		
26	24	36			25	24	60		
27	24	19			26	25	126		
28	52	58			27	20	263		
29	32	36			28	24	136		
30	10	140			29	26	371		
31	28	520			30	26	38		

ORIGINAL
FILE COPY
DO NOT REMOVE

PAH tests

Geochemical Lab Report

Report No. 44-80

Page No. 2

SAMPLE NO.	Pb ppm	Zn ppm			SAMPLE NO.	Pb ppm	Zn ppm		
B 31	24	42			C 24	26	65		
32	18	13			25	19	122		
33	16	42			26	28	2740		
34	24	36			27	20	77		
35	17	28			28	16	28		
36	16	146			29	29	182		
37	16	36			30	20	920		
38	10	50			31	17	2440		
39	40	107			32	23	216		
40	20	174			33	24	73		
41	18	156			34	29	134		
42	9	72			35	38	240		
43	14	74			36	19	142		
C 1	36	520			37	24	40		
2	40	700			38	32	80		
3	20	315			39	38	33		
4	18	231			40	28	110		
5	20	690			41	20	62		
6	30	580			42	25	64		
7	34	266			43	25	146		
8	20	590			44	26	92		
9	22	470			45	27	48		
10	18	176			46	16	34		
11	26	1070			47	16	68		
12	32	880			48	20	52		
13	24	640			49	20	77		
14	40	2500			50	660	80		
15	27	2360			51	40	215		
16	37	700			52	97	332		
17	29	325			53	40	80		
18	34	500			54	38	114		
19	21	200			55	32	38		
20	26	70			56	32	148		
21	26	52			57	30	108		
22	30	108			58	29	84		
23	24	356			59	39	140		

CORDILLERAN ENGINEERING LIMITED

MINERAL EXPLORATION
MANAGEMENT AND
ENGINEERING CONSULTANTS

1418-355 BURRARD STREET
VANCOUVER, B.C.
V6C 2P8
TELEPHONE (604) 681-8381

WRITER'S CERTIFICATE

I, C. Michael Hamilton of Vancouver, British Columbia hereby certify that:

1. I am a geologist residing at 1150 Jervis Street (Apt. 2004) and employed by Cordilleran Engineering Limited of 1418-355 Burrard Street, Vancouver, B.C., V6C 2G8.
2. I received a Professional Degree (Geological Engineering) from the Colorado School of Mines, Golden, Colorado (1969), and completed one year of graduate studies (1970).
3. I am a certified member of the Association of Professional Engineers of the Province of British Columbia.
4. I am the author of this report which is based on field work conducted during July, 1974 on behalf of Sicintine Mines Ltd. (N.P.L.).
5. I have no beneficial interest in Sicintine Mines Ltd. (N.P.L.) nor do I expect to receive any.



CORDILLERAN ENGINEERING LIMITED

A handwritten signature in black ink that reads "C. Michael Hamilton".

C. M. Hamilton, P.Eng.
Geologist

October, 1974
Vancouver, B.C.

CANADA)
) In the matter of a geological and geochemical
) report on behalf of Sicintine Mines Ltd. (NPL)
 TO WIT:)

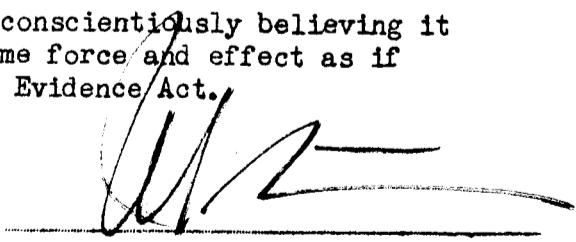
I, John W. Stollery, agent for Cordilleran Engineering Limited
 of city of Vancouver, Province of British Columbia

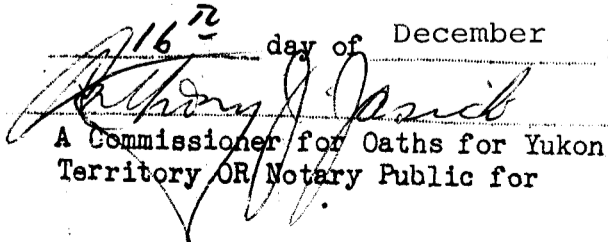
do solemnly declare, - that geological mapping, prospecting and
 geochemical sampling were conducted on the Bid 7-14, 25-32 and
 43-50 mineral claims, Mayo Mining District, Y.T. during the period
 July 15 - July 25th, 1974 at a cost of:

Consulting Fees	\$4,481.77	
Salaries	825.16	
Fixed Wing	682.59	
Helicopter	1,036.37	
Geochemical Analysis	255.00	
Assays	31.00	
Travel	139.20	
Office supplies, telephone, Freight, drafting	575.95	
Camp supplies and food	<u>1,282.22</u>	<u>\$9,309.26</u>

And I make this solemn declaration conscientiously believing it
 to be true and knowing that it is of the same force and effect as if
 made under oath and by virtue of The Canada Evidence Act.

Declared before me at Vancouver)
 Province of)
 in the British Columbia this)
 16th day of December 1974)




 A Commissioner for Oaths for Yukon
 Territory OR Notary Public for

To: _____

PAGE No. One

C O R R E C T E D C O P Y

BONDAR-CLEGG & COMPANY LTD.

REPORT No A 4-94

DATE: August 30, 1974

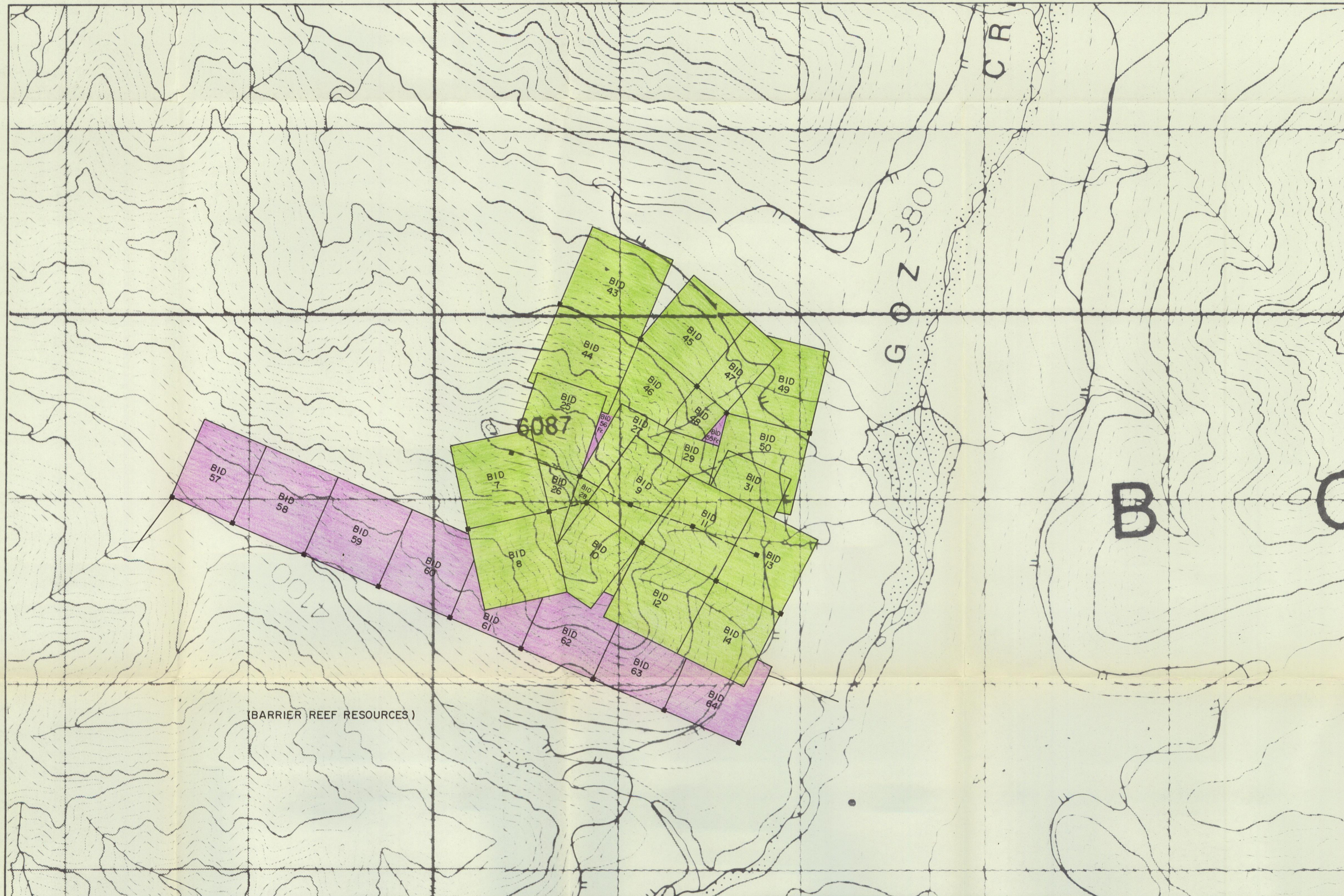
Cordilleran Engineering Ltd.
1418 - 355 Burrard St.
Vancouver, B.C.

that the following are the results of assays made by us upon the herein described Rock samples.

MARKED	GOLD		SILVER	Pb	Zn Tot.	Zn Sol.					TOTAL VALUE PER TON (2000 LBS.)
	Ounces per Ton	Value per Ton	Ounces per Ton	Percent	Percent	Percent	Percent	Percent	Percent		
4126				0.03	29.2	24.00					
4127				0.01	11.2	8.68					
4132				0.02	2.76	2.68					
4133				0.02	0.23	0.21					
4134				0.02	0.77	0.72					
4135				0.02	0.42	0.24					

This Copy is to correct the Copy dated August 29.

ORIGINAL
FILE COPY
DO NOT REMOVE



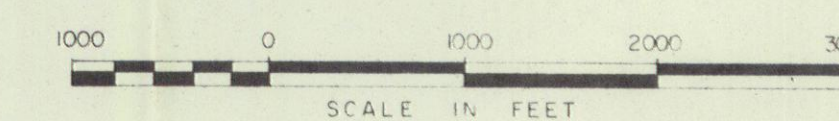
SICINTINE MINES LTD. (NPL)

CLAIM MAP

BID CLAIM GROUP

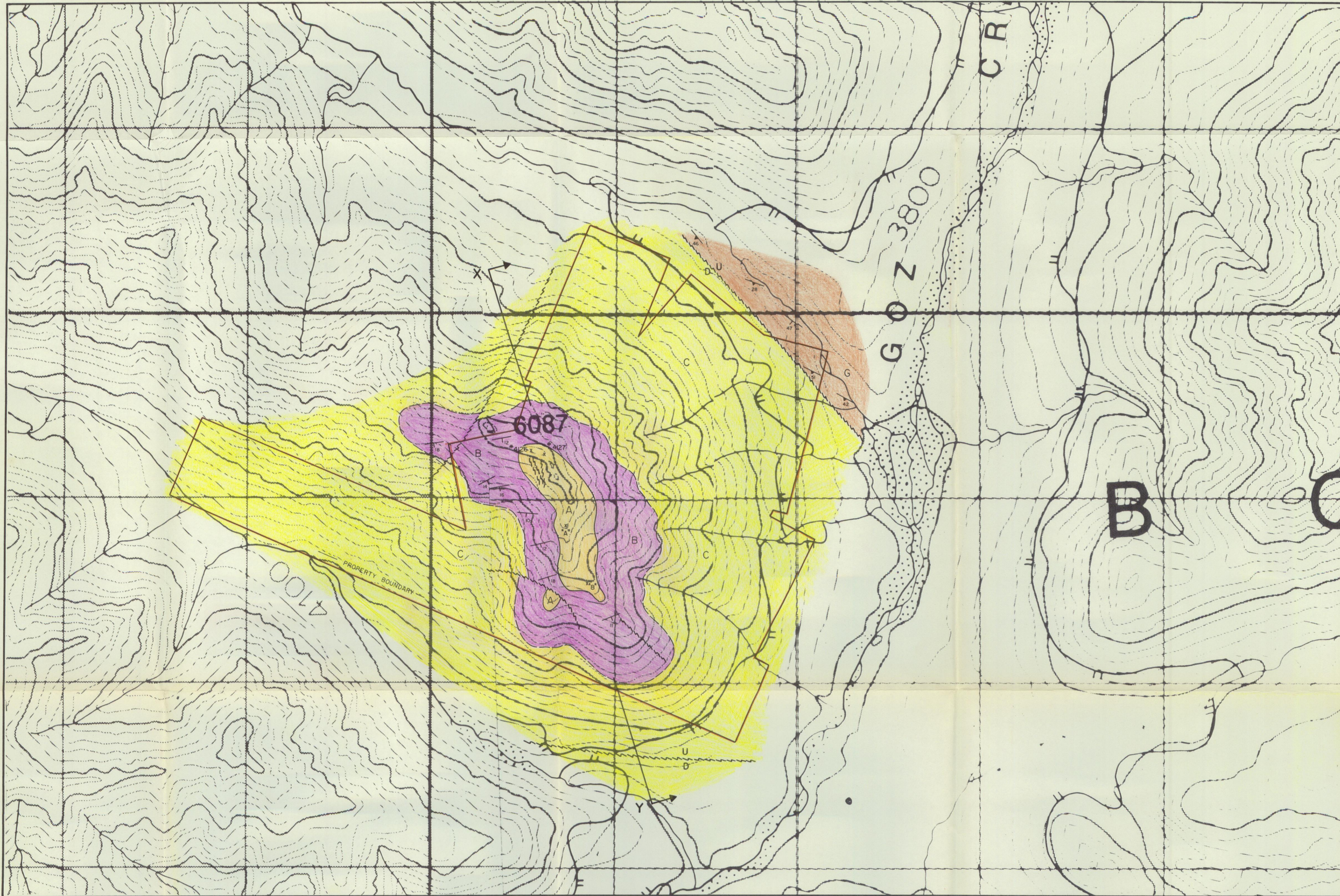
NADALEEN RIVER AREA (N.T.S. 106C)

MAYO MINING DISTRICT, YUKON TERRITORY



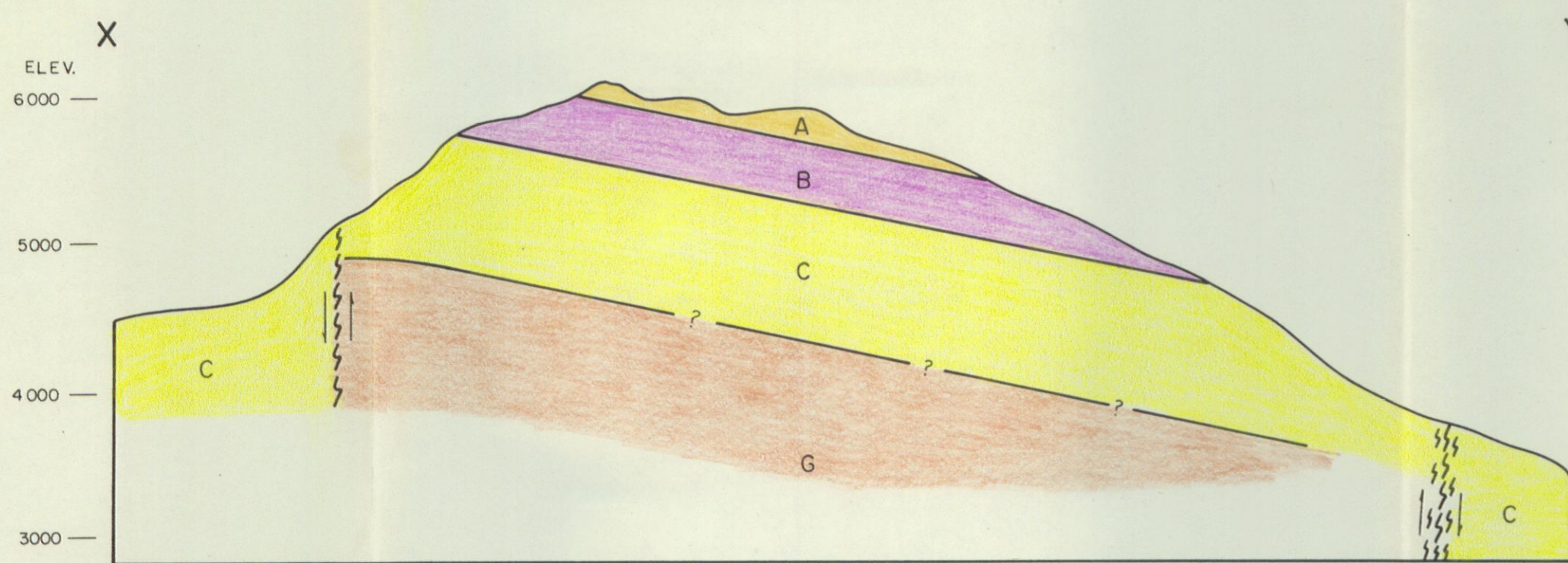
BY
 CORDILLERAN ENGINEERING LTD.
 1418 - 355 BURNARD STREET
 VANCOUVER, B.C.
 OCT. 1974





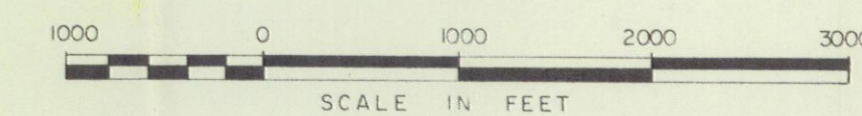
LEGEND

- A** DOLOSTONE: buff weathering, thick bedded to massive, fine to coarse crystalline dolostone. Locally vuggy and pisolitic.
 - B** SANDY DOLOSTONE - QUARTZITE: light gray weathering, fine to coarse grained, crossbedded quartz sandstone, quartzite, and arenaceous dolostone.
 - C** DOLOSTONE: light gray, thick bedded, fine crystalline, locally pisolitic dolostone.
 - G** SHALE: light brown to gray, thin bedded phyllitic shale and phyllite.
- STRIKE AND DIP
 - CLEAVAGE
 - GEOLOGICAL CONTACT: definite, inferred
 - FAULT
 - x 4127 ROCK SAMPLE LOCATION AND NUMBER: see Appendix for geochemical analyses.



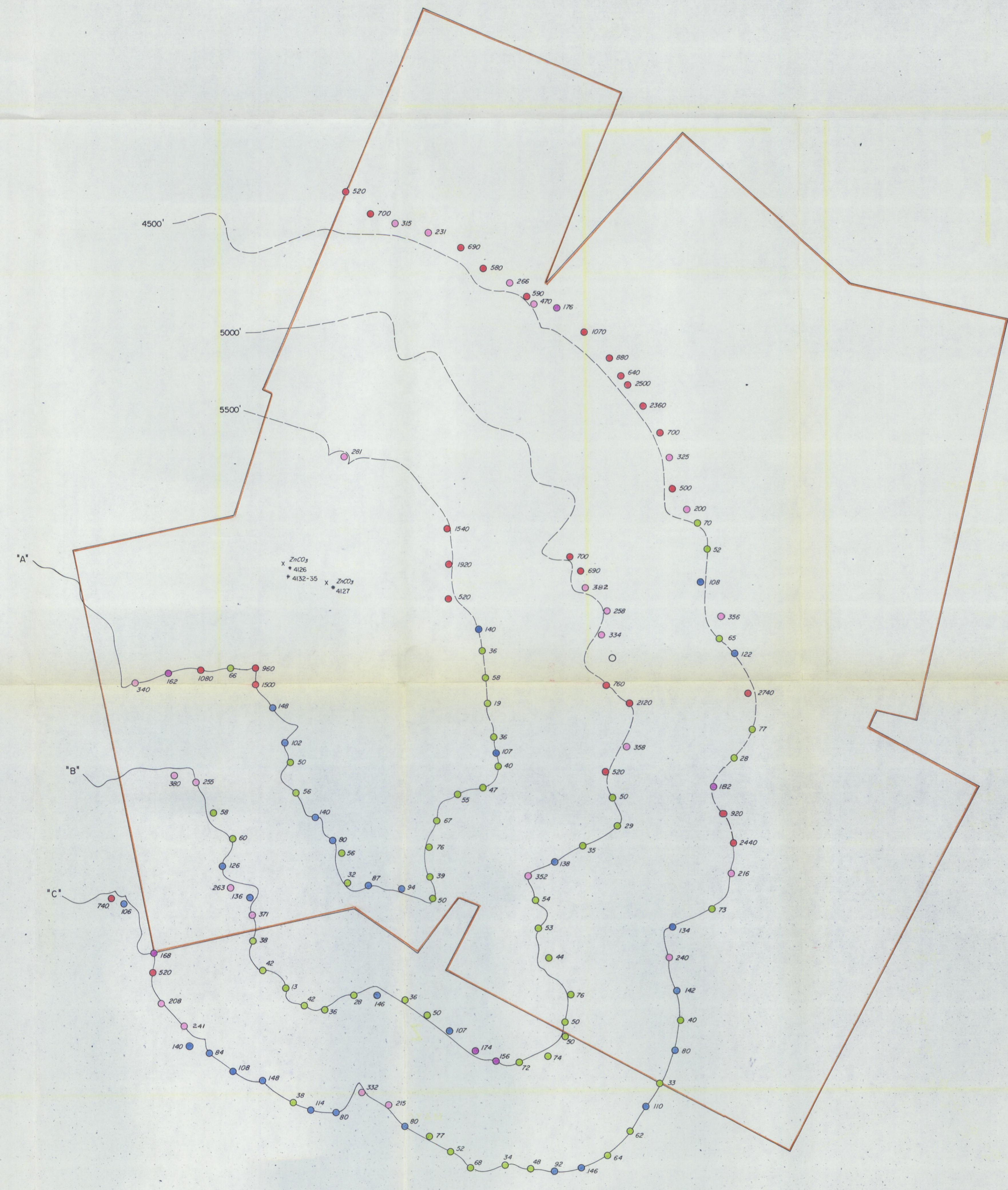
X - SECTION

SICINTINE MINES LTD. (NPL)
GEOLOGICAL MAP
 BID CLAIM GROUP
 NADALEEN RIVER AREA (N.T.S. 106 C)
 MAYO MINING DISTRICT, YUKON TERRITORY



BY
 CORDILLERAN ENGINEERING LTD.
 1418 - 355 BURRARD STREET
 VANCOUVER, B.C.
 OCT. 1974

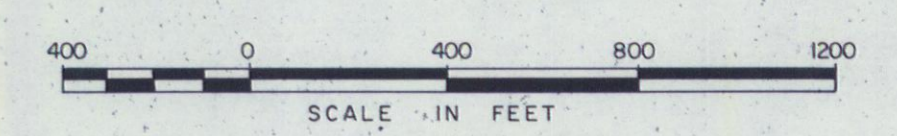




LEGEND

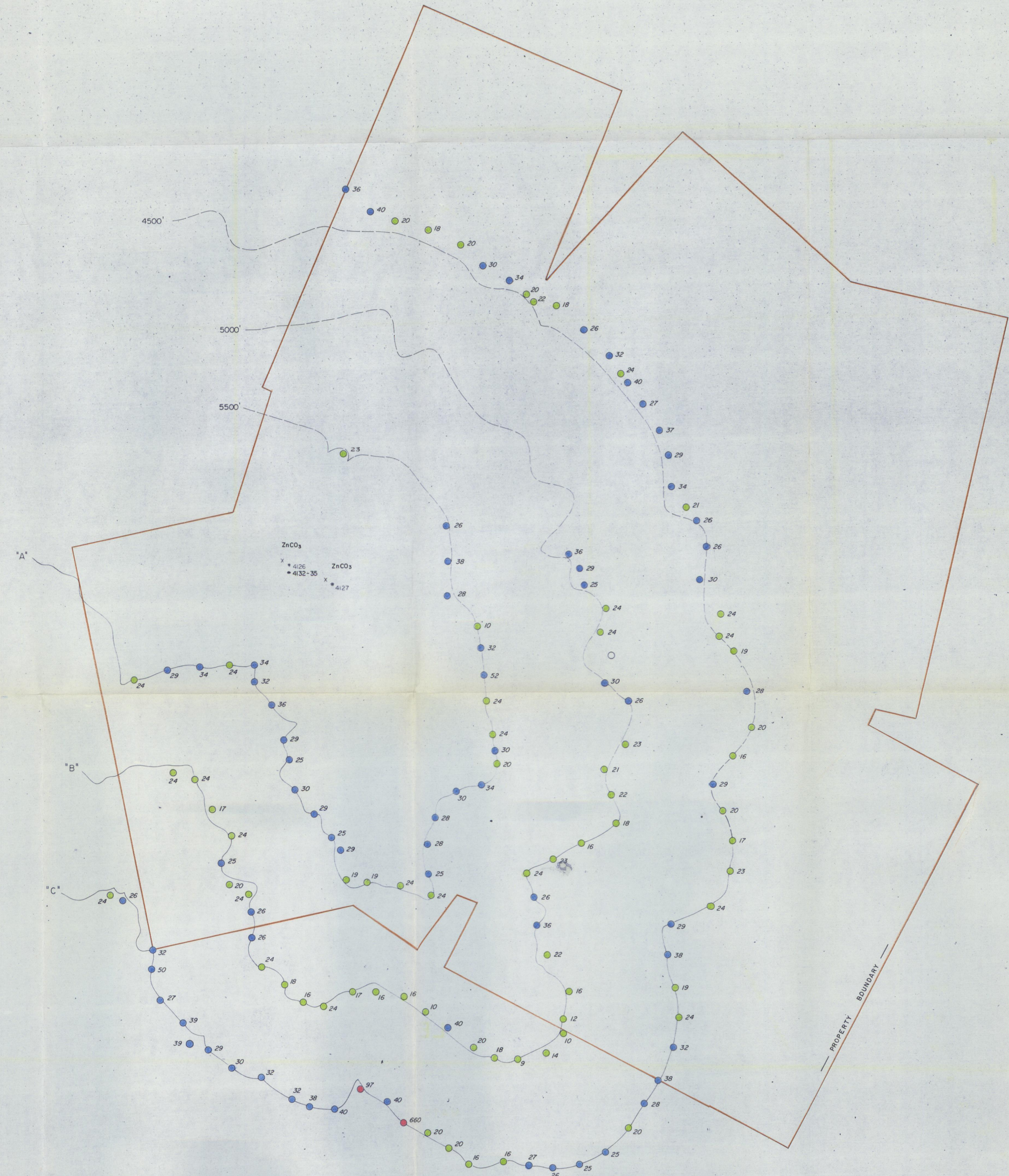
- ZINC CONTENT**
- BACKGROUND ——— 0 TO 79 ppm
 - ABOVE BACKGROUND ——— 80 TO 149 ppm
 - POSSIBLE ANOMALY ——— 150 TO 184 ppm
 - ANOMALY ——— 185 TO 499 ppm
 - STRONG ANOMALY ——— 500 + ppm
- X ROCK SAMPLE LOCATION AND NUMBER
see Appendix for assay results.

SICINTINE MINES LTD. (NPL)
ZINC CONTENT OF SOILS
BID CLAIM GROUP
NADALEEN RIVER AREA (N.T.S. 106 C)
MAYO MINING DISTRICT, YUKON TERRITORY



BY
CORDILLERAN ENGINEERING LTD.
1418 - 355 BURRARD STREET
VANCOUVER, B.C.
OCT. 1974



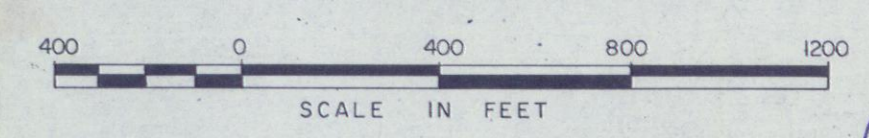


ZnCO₃
x 4126
• 4132-35
x 4127

LEGEND

- LEAD CONTENT**
- BACKGROUND ----- 0 TO 24 ppm
 - ABOVE BACKGROUND ----- 25 TO 64 ppm
 - POSSIBLE ANOMALY ----- 65 TO 79 ppm
 - ANOMALOUS ----- 80 + ppm
- x ROCK SAMPLE LOCATION AND NUMBER
see Appendix for assay results.

SICINTINE MINES LTD. (NPL)
LEAD CONTENT OF SOILS
BID CLAIM GROUP
 NADALEEN RIVER AREA (N.T.S. 106 C)
 MAYO MINING DISTRICT, YUKON TERRITORY



BY
 CORDILLERAN ENGINEERING LTD.
 1418 - 355 BURNARD STREET
 VANCOUVER, B.C.
 OCT. 1974

