

WHITEHORSE COPPER MINES LTD.

REPORT ON EXPLORATORY WORK
DONE UNDER "NORTHERN MINERAL
EXPLORATION ASSISTANCE PROGRAM"
SEPTEMBER 1973 - MARCH 1974

A. HUREAU,
Geologist.

*Received Ottawa
March 12, 1974*

TABLE OF CONTENTS

<u>INTRODUCTION</u>	<u>PAGE</u>
<u>LITTLE CHIEF - BIG CHIEF AREA</u>	
Geology	1
Drilling Results	1
<u>COWLEY PARK AREA</u>	
General	2
Drilling Results	2
<u>BLACK CUB SOUTH AREA</u>	
General	3
Drilling Results	3
<u>VALERIE</u>	
General	3
Drilling Results	4
<u>WAR EAGLE - Claims WE 19 - 34</u>	
General	4
Geology	4
I.P. Survey	5
<u>SUMMARY OF EXPENDITURES</u>	
Diamond Drilling	6
I.P. Survey	6

TABLE OF CONTENTS CON'D.

Fig. 1	Loc Sketch of Property	In Report
Fig. 2	Geology Map Cowley Park - Little Chief	In Report
Fig. 3	Table of Formations	In Report
Fig. 4	Loc of Little Chief Holes	In Report
Fig. 5	Loc of Cowley Park Holes	In Report
Fig. 6	Loc of Black Cub South Holes	In Report
Fig. 7	Loc of Valerie Hole	In Report
Fig. 8	Loc of WE 19 - 34 Claims	
Annex A	Logs & Sections - Little Chief	
Annex B	Logs & Sections - Cowley Park	
Annex C	Logs & Sections - Black Cub South	
Annex D	Log & Section of Valerie	
Annex E	Diamond Drilling Invoices	
Annex F	I.P. Survey Invoices	

GEOLOGICAL LEGEND

FIG. 3

CENOZOIC

QUATERNARY

PLEISTOCENE & RECENT

- Q ALLUVIUM, GLACIAL DRIFT
- 10 MILES CANYON BASALT

POST CRETACEOUS

INTRUSIVE DYKES OR SILLS

- 9a ACIDIC GRANITIC, APLITE, FELSITE, 9a - MAY PREDATE SKARN
- 9b BASIC ANDESITE, DIORITE, POST-ORE, 9b_π - PORPHYRY

MESOZOIC

CRETACEOUS

COAST INTRUSIVES

- 8 DIORITE 8a - ALTERED (ENDOSKARN)
8b - MINERALIZED ENDOSKARN, MALACHITE, CHALCOPYRITE, BORNITE
- 7 7g - GRANITE, 7b - GRANODIORITE, 7m - QUARTZ MONZONITE

LOWER JURASSIC & LATER

- 6 LABERGE GROUP

UPPER TRIASSIC

LEWES RIVER GROUP (METAMORPHOSED)

- 5 LIMESTONE AND/OR DOLOMITE, 5b - CARBONACEOUS LIMESTONE
- 4 SEDIMENTS - NON CALCAREOUS 4q - QUARTZITE, 4g - GREYWACKE,
4k - ARKOSE

- | | | | |
|---|-----------------------------------|----------------|------------------|
| 3 | SKARN - BARREN, WITH | a - ACTINOLITE | t - TREMOLITE |
| | | c - CHLORITE | w - WOLLASTONITE |
| | | d - DIOPSIDE | z - ZOISITE |
| 2 | MINERALISED SILICATE SKARN | e - EPIDOTE | M - MAGNETITE |
| | | f - FELDSPAR | H - HEMATITE |
| 1 | MINERALISED MAGNETITE SKARN | g - GARNET | C - CHALCOPYRITE |
| | | s - SERPENTINE | B - BORNITE |
| | | | V - VALERIITE |

FIG 3

WHITEHORSE COPPER MINES LTD.

INTRODUCTION

This report describes the exploratory work done on property of Whitehorse Copper Mines Ltd. 1973-74 under the Northern Mineral Assistance Program (File No. N3668-103).

Seventeen thousand 2 hundred and 91 ft. of diamond drilling was done in 4 areas of the Whitehorse Copper Belt. Seventeen and one half line miles of an Induced Polarization Survey were completed on claims WE 19 - 34 at the north end of the belt. Follow up work in two areas is expected to start in the Spring of 1974.

Fig. 1 is a location sketch.

Fig. 2 is a Geology Map - Cowley Park to Big Chief.

Fig. 3 is a Table of Formations.

LITTLE CHIEF - BIG CHIEF AREA

GEOLOGY

The area is located approximately in the centre of the Whitehorse Copper Belt which extends for a known distance of twenty miles in a north westerly direction.

Copper-iron deposits in this belt are contact metasomatic or skarn deposits. They occur near the contact of diorite of the Coast Range Intrusive Complex and the Triassic Lewes River Group of sedimentary rocks.

In the Little and Middle Chief orebodies bornite, chalcopyrite, valleriite, and chalcocite occur in a magnetite serpentine skarn which strikes north westerly and dips 70° easterly. The mineralized skarn occurs between a quartzite and barren skarn on the footwall and limestone and barren skarn in the hanging wall. This skarn and sedimentary sequence is part of an embayment in the diorite.

The Little Chief orebody is faulted at its north end. The Big and Middle Chief deposits are a faulted northward extension of the Little Chief orebody.

DRILLING RESULTS - (Sept. 26 - Oct. 14, 73)

Two holes were drilled to test the quartzite skarn contact north of the Middle Chief ore zone. Only weak mineralization was encountered in the skarn. A third hole which had been proposed was not drilled because of the discouraging results of the first holes.

Fig. 4 shows the location of holes with relation to claim boundaries.

Hole #	Section	Departure	Dip	Azimuth	Depth
LC 114	110+00N	54+95E	-46	242° 15'	814'
LC 115	113+00N	55+23E	-50	242° 15'	645'

Logs and sections showing holes are attached as Annex A.

COWLEY PARK AREA

GENERAL

The Cowley Park Zone is located ten miles southeast of the Little Chief Mine at McCrea. It is two and one half miles south of M.P. 905 on the Alaska Hwy.

Bornite, Chalcopyrite and Molybdenite occur in an easterly trending garnet wallastonite skarn which is part of a limestone, skarn sequence enclosed by diorite.

Ore reserve estimates, based on sixty-six holes with a total of 17,000' of drilling, indicate one million tons at 0.9% Cu and 0.06% MoS₂ to a depth of 300' below surface.

DRILLING RESULTS

Three holes (1648') were drilled to test the down dip extension of the Cowley Park zone. Although mineralization was encountered in each hole the grade was uneconomic and the estimate of ore reserves was not improved.

Fig. 5 shows the location of holes in relation to the claim boundaries.

Hole #	Section	Departure	Dip	Azimuth	Depth
CP 68	75+50E	48+04N	-72	14° 50' 24"	527'
CP 69	72+50E	46+80N	-61°	14° 50' 24"	478'
CP 70	79+00E	49+00N	-61°	14° 50' 24"	644'

Logs and sections showing holes are attached as Annex B.

2x

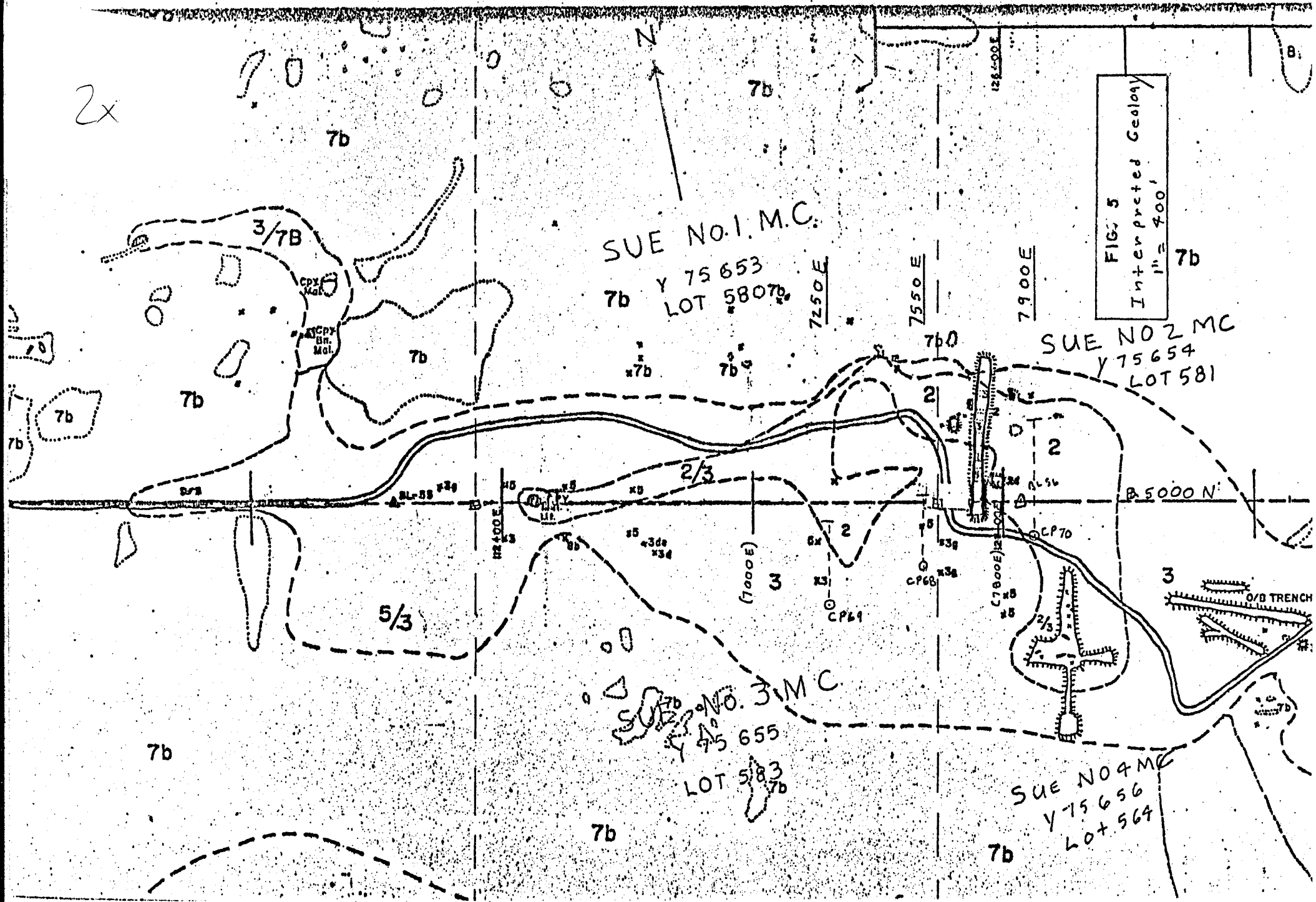
SUE NO. 1 M.C.
7b Y 75 653
LOT 5807b

SUE NO 2 MC
Y 75 654
LOT 581

SUE NO. 3 M.C.
Y 75 655
LOT 583

SUE NO 4 MC
Y 75 656
LOT 564

FIG. 5
Interpreted Geology
1" = 400'



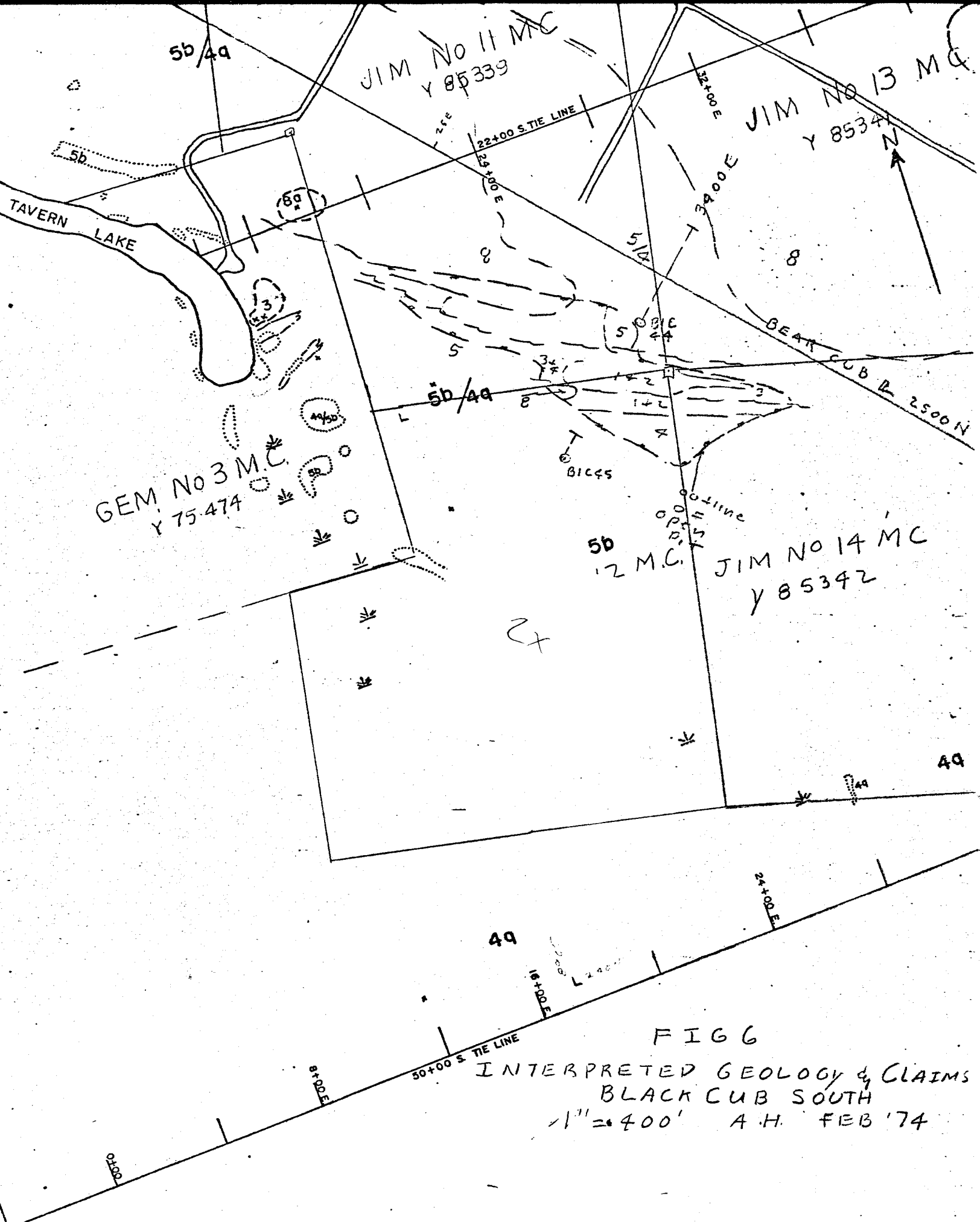


FIG 6
 INTERPRETED GEOLOGY & CLAIMS
 BLACK CUB SOUTH
 1" = 400' A.H. FEB '74

BLACK CUB SOUTH

GENERAL

The Black Cub South Zone is located seven miles southeast of McCrea from which it is accessible by a good haulage road.

The property is held solely by Whitehorse Copper Mines Ltd. as claims Jim 11 to 14 (Y 85337 to 85342) and surface lease #1.

Two hundred thousand tons of ore grading 1.3% Cu were mined by open pit mining during 1970-71. Bornite and chalcopyrite occur in a magnetite serpentine skarn which is part of a skarn, limestone, quartzite, greywacke, sequence striking southeasterly and dipping to the southwest. The mineralization occurs within four hundred feet of diorite to the north-east and northwest.

DRILLING RESULTS - (Oct. 27 - Nov. 15, 73)

Two holes (935') were drilled to check the diorite seds contact for skarn type mineralization. BLC 44, drilled to a depth of 807' encountered only weak mineralization. BLC 45 was stopped at 128' because of very poor drilling conditions. Drilling mud could not be used because of extremely cold weather. An attempt will be made to deepen the hole when weather conditions are more favorable.

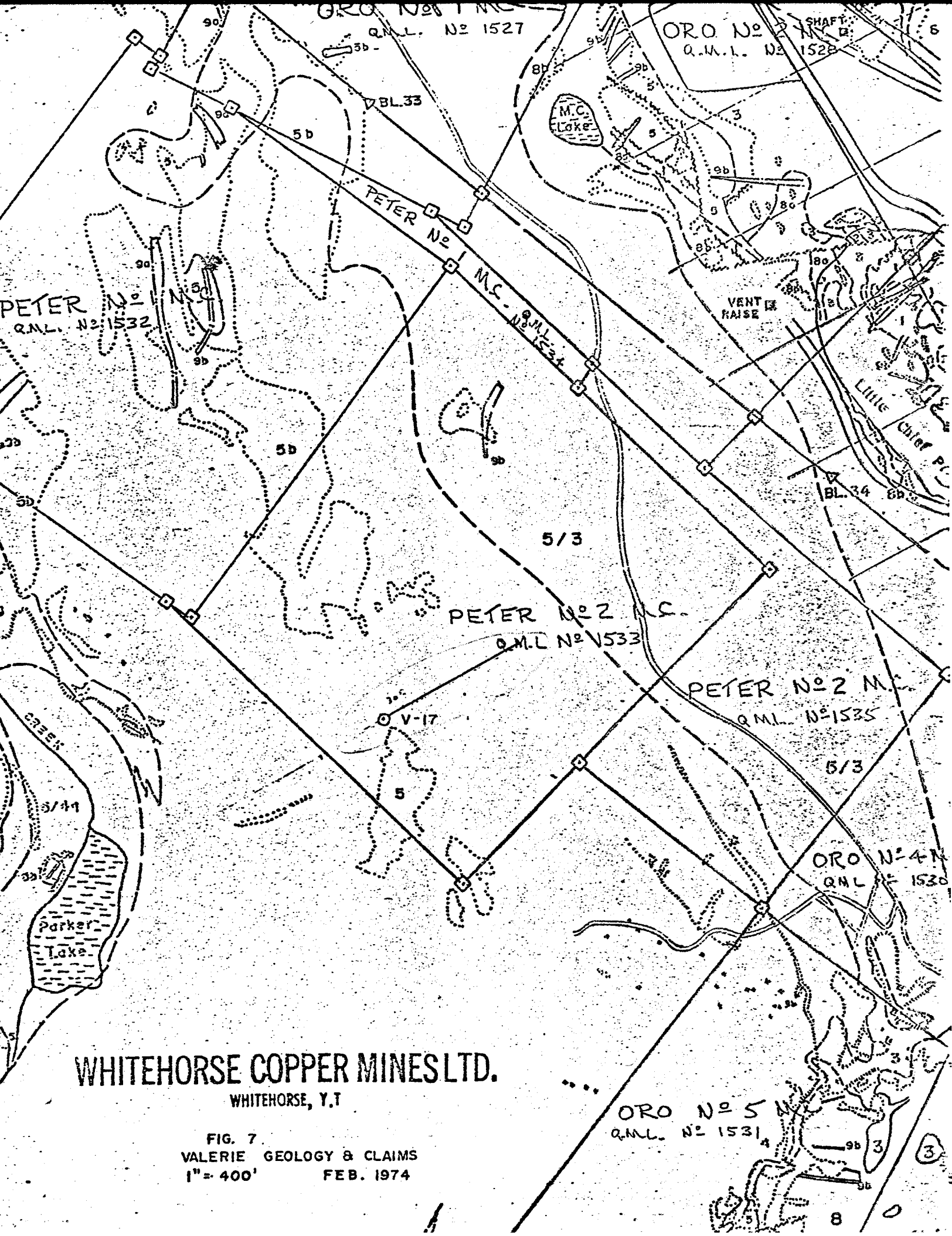
Fig. 6 shows the location of drilling in relation to claim boundaries.

Hole #	Section	Departure	Dip	Azimuth	Depth
BLC 44	34+00E	23+20N	-58°	46° 35'	807'
BLD 45	34+00E	18+00N	-60°	46° 35'	128'

Logs and sections showing holes are attached as Annex C.

VALERIE

Induced polarization and magnetic anomalies north of the Valerie workings 800' south west of the Little Chief pit were drilled from surface and yielded low grade copper mineralization in a magnetite serpentine skarn. LCU 116 drilled from the decline passed below this mineralization (Annex D). West of the Valerie there is surface evidence of a repetition of the limestone, quartzite sequence. Hole V17 was drilled to test possible quartzite



WHITEHORSE COPPER MINES LTD.

WHITEHORSE, Y.T

FIG. 7
 VALERIE GEOLOGY & CLAIMS
 1" = 400'
 FEB. 1974

limestone contacts near diorite which would occur if the sequence was repeated. These contacts are potential zones of mineralization.

Fig. 7 shows the location of hole V17 in relation to claim boundaries.

Hole #	Section	Departure	Dip	Azimuth	Depth
V17	91+50N	29+20E	-80°	64° 15'	

A log of the hole and an interpreted section are shown as Annex D.

WAR EAGLE CLAIMS WE 19 - 34

GENERAL

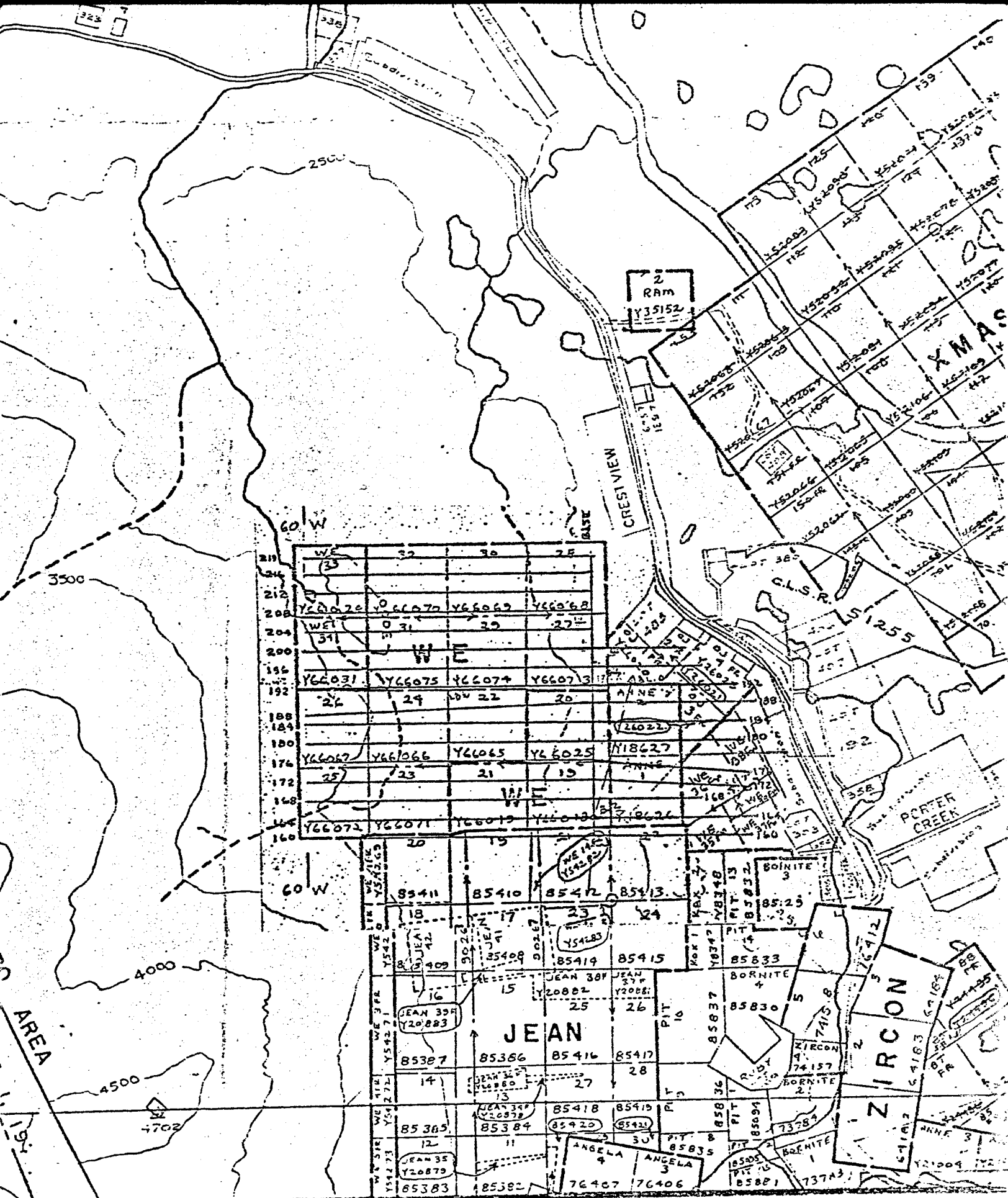
The WE 19 - 34 claims are located west of the Porter Creek Sub-division Mile 921 of the Alaska Hwy. The area is accessible by a number of roads which provide access to a fire break which runs through the property from North to South.

Fig. 8 is a location sketch of the claims.

GEOLOGY

The WE 19 - 34 claims are at the northern extremity of the known Whitehorse Copper Belt. The southern boundary of the claims is approximately 1½ miles north of the War Eagle Pit which produced 900,000 tons @ 1.2% Cu. Rock exposure on the claims is poor. Diorite of the Coast Range Intrusive Complex is known to be in contact with rocks of the Lewes River group in the west and southwest part of the area.

Skarn float containing bornite and chalcopyrite has been found in a number of locations on the claims.



JEAN 35 FR.
Y20277

FIG 8

WHITEHORSE COPPER MINES LTD.

WAR EAGLE CLAIMS WE 19-34

WHITEHORSE SHEET 105-D-14

1" = 1/2 MI.

FEB. 1974

14


FIG. 8

INDUCED POLARIZATION SURVEY - (Oct. 3 - Oct. 29, 73)

An I.P. Survey was completed over claims WE 19 - 34 between Oct. 3 and Oct. 29, 1973. The survey was extended to cover claims WE 35 - 39, (only the portion of expenses incurred on WE 19 - 34 have been claimed).

A number of anomalies were found near probable diorite-sediments contacts with which mineralization on the belt is associated. None of the anomalies had magnetic correlation. Weakly anomalous (copper) soil samples were found in the area of the anomaly centered at 192N 29W.

Copies of the I.P. Survey with plans of geological mapping, magnetometer survey, and geochemical sampling have been submitted with the 1974 proposal for The Northern Mineral Exploration Assistance Program.



A. Hureau, Geologist

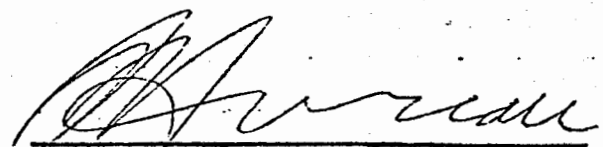
WHITEHORSE COPPER MINES LTD.

SUMMARY OF EXPENDITURES

1. <u>Diamond Drilling</u> - (Sept 26 - Dec. 16) (Feb. 5 - Feb. 28)	
a) Invoice Nov. 2, 73 Annex E - 1 & 2	\$ 28,069.75
b) Invoice Dec. 6, 73 Annex E - 3, 4 & 5	19,030.55
c) Invoice Jan. 3, 74 Annex E - 6, 7 & 8	11,564.32
d) Invoice Feb. 28, 74	18,474.34
	<hr/>
TOTAL	\$ 77,138.96
Geological Supervision and Core Logging	\$ 2,180.00
Allow 20% staff fringe benefits, U.I.C., C.P.P., Group Life, Holiday Pay, Extended Medical Benefits	436.00
	<hr/>
TOTAL	\$ 79,754.96
2. <u>I.P. Survey</u> - (Oct. 3 - Oct. 29, 73)	
a) Kenting Invoice * Annex F - 1	\$ 5,762.10
b) Statement of Labourers Wages * Annex F - 2	2,632.50
c) Truck Rental Invoice * Annex F - 3	418.99
d) Supervision 2/3 mo. @ \$ 12.00/mo. 1/2 time to project	400.00
Fringe Benefits @ 20%	80.00
	<hr/>
TOTAL I.P. SURVEY	\$ 9,293.59
TOTAL I.P. & DRILLING	\$ 89,048.55
Allow 10% Administration	8,904
	<hr/>
TOTAL	\$ 97,952

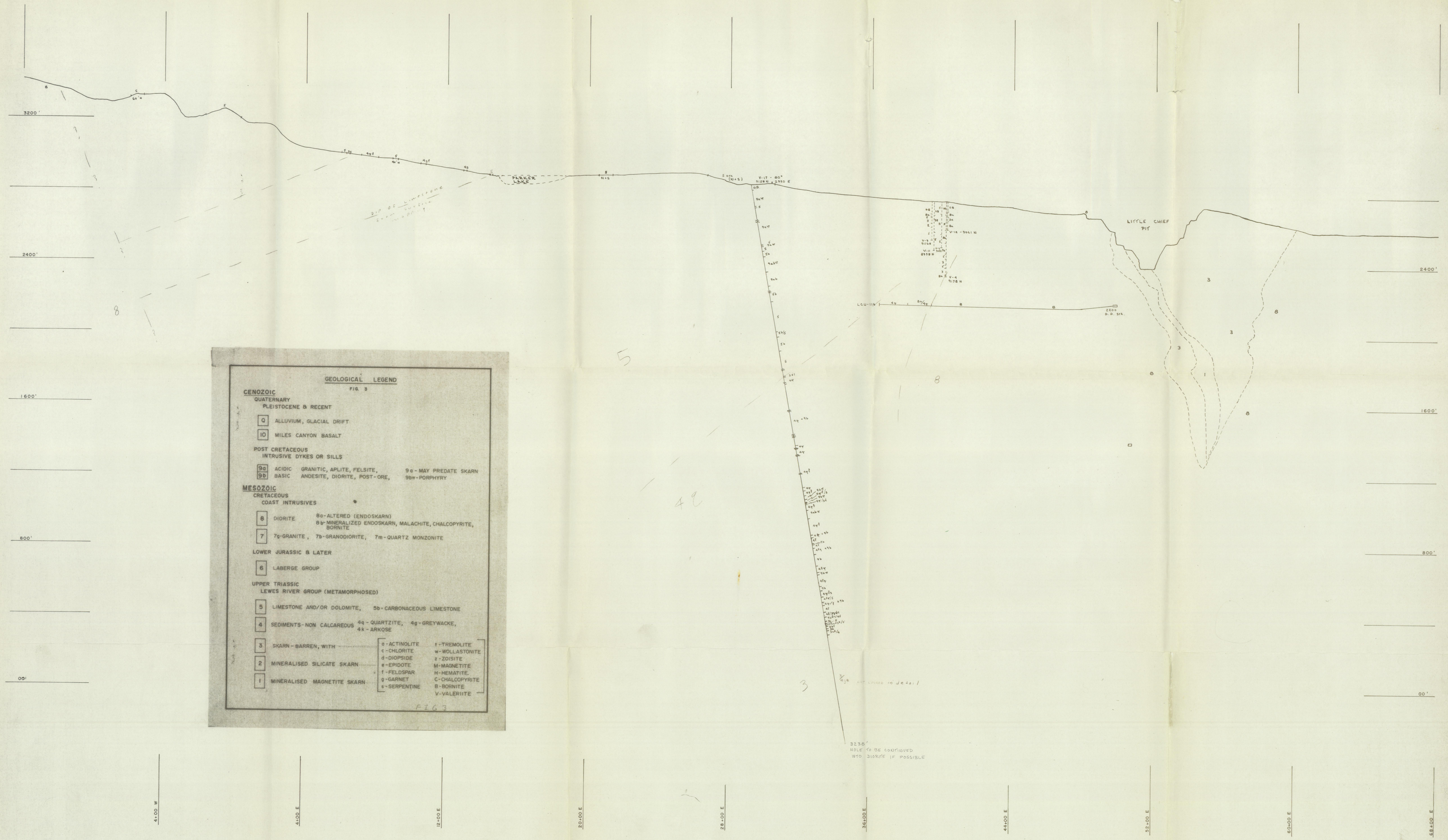
* Only portion of survey done on claims WE 19 - 34 claimed.

Less: 1/3 of costs relating to programs in which Company has only a 2/3 interest:	
Valerie	\$16,057
Big Chief	4,295
	<hr/>
Net cost to Company - per request for payment	\$20,352
	<hr/>
	\$77,600
	<hr/>


A. Hureau, Geologist

UNCOMMON ABBREVIATIONS USED IN LOGS

altd	-	altered
blk	-	black
bnd	-	band
brn	-	brown
carb'd	-	carbonated
cg	-	coarse grained
ct	-	contact
dissem	-	disseminated
dk	-	dark
fg	-	fine grained
frag	-	fragment
grn	-	green
gy	-	grey
Hbde	-	hornblende
hly	-	highly
hvy	-	heavy
lchd	-	leached
loc	-	locally
med	-	medium
mg	-	medium grained
occ	-	occasional
rem	-	remnant
sect	-	section
sed	-	sediment
shrd	-	sheared
spec	-	speck
strk	-	streak
text	-	texture
v	-	very
w	-	with
wh	-	white
xnocrysts	-	phenocrysts



GEOLOGICAL LEGEND
FIG. 3

CENOZOIC

QUATERNARY
PLEISTOCENE & RECENT

Q ALLUVIUM, GLACIAL DRIFT
10 MILES CANYON BASALT

POST CRETACEOUS
INTRUSIVE DYKES OR SILLS

9a ACIDIC GRANITIC, APLITE, FELSITE, 9c - MAY PREDATE SKARN
9b BASIC ANDESITE, DIORITE, POST-ORE, 9bM - PORPHYRY

MESOZOIC

CRETACEOUS
COAST INTRUSIVES

8 DIORITE 8a - ALTERED (ENDOSKARN)
8b - MINERALIZED ENDOSKARN, MALACHITE, CHALCOPYRITE, BORNITE
7 7g - GRANITE, 7b - GRANODIORITE, 7m - QUARTZ MONZONITE

LOWER JURASSIC & LATER

6 LABERGE GROUP

UPPER TRIASSIC
LEWES RIVER GROUP (METAMORPHOSED)

5 LIMESTONE AND/OR DOLOMITE, 5b - CARBONACEOUS LIMESTONE
4 SEDIMENTS - NON CALCAREOUS 4g - QUARTZITE, 4q - GREYWACKE,
4k - ARKOSE

3 SKARN - BARREN, WITH	g - ACTINOLITE	f - TREMOLITE
2 MINERALISED SILICATE SKARN	c - CHLORITE	w - WOLLASTONITE
1 MINERALISED MAGNETITE SKARN	d - DIOPSIDE	z - ZOISITE
	e - EPIDOTE	m - MAGNETITE
	f - FELDSPAR	h - HEMATITE
	g - GARNET	c - CHALCOPYRITE
	s - SERPENTINE	b - BORNITE
		v - VALERIITE

FIG. 3

WHITEHORSE COPPER MINES LTD.
WHITEHORSE, Y.T.
LITTLE CHIEF SECTION 9150 N

DR BY: L. DAHL	APP'D BY: A. H.	REVISIONS:
DATE: FEB. 1974	SCALE: 1" = 200'	
REF. NO.	DWG. NO.	

4600E

4800E

5000E

5200E

5400E

5600E

5800E

2700'

2600'

2500'

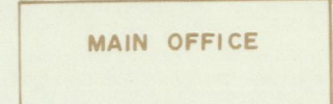
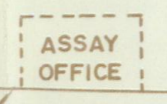
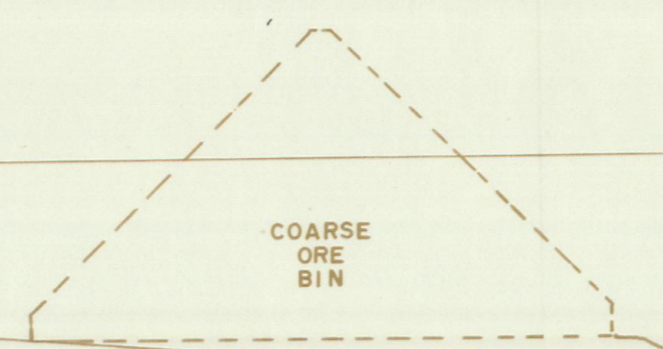
2400'

2300'

2200'

2100'

2000'



L.C. 115

LITTLE CHIEF SECTION 113N
1" = 40'

WHITEHORSE COPPER MINES LTD.
WHITEHORSE, N.T.

Acid Tests: 200 - 42° 30'
 400 - 41° 30'
 600 - 38° 30'
 800 - 37°

NEW IMPERIAL MINES LIMITED
 MINING DIVISION - WHITEHORSE
 YUKON TERRITORY

PROPERTY <u>Little Chief Surface</u>	Claim No. _____	Strike _____ (W)	Lot. _____	Hole No. <u>LC-114</u>
Date <u>Oct 2nd 19 73</u>	Section No. <u>110+00</u>	Dip <u>-46°</u> <small>200' 42 1/2° 400' 41 1/2° 600' 38 1/2° 800' 37°</small>	Dep. <u>5495 E</u>	Total Depth <u>814'</u>
Logged By <u>D. Tenney</u>	Plan No. <u>SURFACE</u>	Level <u>SURFACE</u>	Elev. _____	Page No. <u>1 of 1</u>

FOOTAGE		ROCK CLASSIFICATION Epid Diop Garn Serp Qtz Sil Actino Tremo Chlo Crystalline Shearing Veins Fracturing Foliation Grain Size Texture	MINERALIZATION		ASSAY DATA							
From	To		TYPE	%	Sample No	Width	Recov	%Cu	%Fe	Moly	Au/Ag	Insol
0.0	3.0	casing										
3.0	33.3	overburden										
33.3	59.3	3 rd pale grey/green fine grained actinolite tremolite clivoid skarn - hard - fairing										
59.3	63.0	9 ^b dark grey fine/med grained basic dyke minor epidote - minor jointed zone 63.0 chilled contact 30°										
63.0	65.5	3 rd as above										
65.5	65.8	9 ^b chilled dull grey/green basic dykelet 50°										
65.8	123.1	3 rd fine grained grey tremolite actinolite ? clivoid skarn - hard good covering 69-70 traces black mineral ? magnetite dissemin. with specks chalcopyrite 92.8 large 1/2 - 1 cm blebs. pyrite.	cpy	TT								
		N 109.0 2" sheared rotted core - fault 80°										
		3/4 117-123 very fine grained ? possible quartzite										

WHITEHORSE COPPER MINES

PLOTTED 40' SECTIONS	INITIALS
PLOTTED 40' ASSAY PLANS	<i>[Signature]</i>
PLOTTED 40' GEO. PLANS	<i>[Signature]</i>
ASSAYS CHECKED	
NTXN GRADE CHECKED	

NEW IMPERIAL MINES LIMITED
 MINING DIVISION - WHITEHORSE
 YUKON TERRITORY

Hole No. LCU-114 Page No. 27

FOOTAGE		ROCK CLASSIFICATION <small>EPID. DIOP. GARN. SERP. QTZ/SIL. ACTINO TREMO. CHLO. CRYSTALLINE. SHEARING. VEINS. FRACTURING. FOLIATION. GRAIN SIZE, TEXTURE</small>	MINERALIZATION		ASSAY DATA							
From	To		TYPE	% Cu	SAMPLE NO.	WIDTH	RECOV.	% CU	% FE	MOLY	AU/AG	INSOL
123.1	130.5	3 ^{agte} green and brown actinolite diopside garnet skarn minor pink zoisite (thulite) fair coarsing very hard										
130.5	142.5	3 ^{als} fine to med grained grey skarn with fibrous and platy minerals; actinolite talc/serpentine soft but good coarsing.										
142.5	198.5	3 ^{dz} (89) pale green and pink diopside zoisite skarn very hard good coarsing - faint dioritic texture.										
		N 156.6 - 157.0 brecciated core minor fault gouge	40°									
		3 ^{ad} 175-178 fibrous pale grey/green actinolite diopside tremolite skarn.										
		-- 148.0-148.5 broken core - small chips.	30°									
198.5	201.5	3 ^d hard pale green f-med grained skarn										
201.5	203.0	3 SM /1 dark green greasy serpentine with minor disseminated magnetite. - chalcopryrite in patches and disseminated.	cpy.	1 1/2%								
203.0	207.1	3 ^{da} pale green fine grained uniform textured skarn - hard good coarsing										
207.1	209.9	5 white coarsely crystalline calcite traces chalcopryrite on both contacts.	cpy	tr.								

NEW IMPERIAL MINES LIMITED
 MINING DIVISION - WHITEHORSE
 YUKON TERRITORY

Hole No. LCU-114 Page No. 3 of

FOOTAGE			ROCK CLASSIFICATION <small>EPID. DIOP. GARN. SERP. QTZ/SIL. ACTINO. TREMO. CHLO. CRYSTALLINE. SHEARING. VEINS. FRACTURING. FOLIATION. GRAIN SIZE, TEXTURE</small>	MINERALIZATION			ASSAY DATA					
From	To			TYPE	% Cu	SAMPLE NO.	WIDTH	RECOV.	% CU	% FE	MOLY	AU/AG
209.9	231.0	3 rd	pale green fine grained actinolite diopside skarn - hard good coning									
231.0	248.0	3 rd 1/2	pale green / grey fine and medium grained actinolite diopside talc (with trace chalcopyrite) skarn - carbonated in patches	cpy.				1/4%				
248.0	257.1	3 rd	- similar to above - no chalcopyrite									
257.1	262.0	3	white sugary quartz with pale green talc crystal. specks cpy @ 261' - wollastonite?	cpy				tr.				
		N	258.0-261.0 broken core 1' lost									
		--	261.0-263.0 broken 1/2' lost									
262.0	272.4	3 rd 1/2	pale green hard and softer skarn diopside serpentine, tremolite talc.									
		N	271.5-272.4 fault gouge - breccia. 45°									
			2698-270.4 diss. cpy.	cpy.				1/4%				
272.4	280.0	3 rd 1/5	white and grey tremolite skarn (? wollastonite) after limestone banding @ 60° minor carbonate remaining.									
		3/2 nd 1/2	278-280 talc + divers chalcopyrite.	cpy				1/2%				
280.0	281.0	3/2 nd 1/4	pale green actinolite diopside skarn - blebs chalcopyrite	cpy.				1/4%				

NEW IMPERIAL MINES LIMITED
 MINING DIVISION - WHITEHORSE
 YUKON TERRITORY

Hole No. LC-114 Page No. 4 of

FOOTAGE			ROCK CLASSIFICATION <small>EPID. DIOP. GARN. SERP. QTZ/SIL. ACTINO TREMO. CHLO. CRYSTALLINE. SHEARING. VEINS. FRACTURING. FOLIATION. GRAIN SIZE, TEXTURE</small>	MINERALIZATION			ASSAY DATA					
From	To			TYPE	%	SAMPLE NO.	WIDTH	RECOV.	%CU	%FE	MOLY	AU/AG
281.0	294.7	3 rd	pale green skarn as before but not mineralised									
294.7	300.0	3/2 nd	pale green fine-med grained actinolite diopside skarn with disseminated blebs chalcopyrite	cpy	1/4							
300.0	316.4	3 rd	pale and dark green diopside (actinolite) skarn softer sections carbonated.									
		N	305.2 - 306.0	broken core	gauge	25°						
		--	309.1 - 309.5	broken								
		--	310.8 - 311.0	broken								
316.4	323.0	3/2 nd	pale green and white diopside feldspar skarn well mineralised in places with blebs patches and disseminated chalcopyrite.	cpy	1 1/4%							
		2 nd	317-318 - heavy blebs + patches chalcopyrite	cpy	4%							
323.0	335.6	3/2 nd	327.3 - pale green diopside skarn good coning 2" chalcopyrite in core	cpy	tr.							
335.6	341.4	3/5	white grey skarnified limestone with ? tremolite/wollastonite minor serpentine minor banding (? bedding) sparse dis. magnetite 30°.									
			332-333 blebs and stringer magnetite hematite dis botrite ? ccke part coning.	bo ccke	3/4							

NEW IMPERIAL MINES LIMITED
 MINING DIVISION - WHITEHORSE
 YUKON TERRITORY

Hole No. LC-114 Page No. 5

FOOTAGE			ROCK CLASSIFICATION EPID. DIOP. GARN. SERP. QTZ/SIL. ACTINO TREMO. CHLO. CRYSTALLINE. SHEARING. VEINS. FRACTURING. FOLIATION. GRAIN SIZE, TEXTURE	MINERALIZATION				ASSAY DATA				
From	To			TYPE	%	SAMPLE NO.	WID TH	RECOV.	%CU	%FE	MOLY	AU/AG
341.4	353.0	3 ^{sd} h	softer light green fine grained skarn diopside, talc, serpentine good coning. irregular "zoning" (light to dark green) good coning									
353.0	377.8	3 ^{da}	pale green fine grained diopside skarn (after quartzite ??) good coning - minor garnet especially as "stringers"									
			362.0 blebs chalcopyrite.	cpy.	-							
		3 ^f	362.5-364.4									
377.8	400.5	9 ^{ab} II	intermediate green (brown tinged) dyke with 2-5 mm white euhedral feldspar phenoxsts. all core well jointed or broken									
		--	377.8-379 chilled contact broken ? 60'									
		--	378-379 1/2' lost									
		--	379-380 1/2' lost. Fault zone									
		--	381-384 3 1/2' lost.									
		--	384-390 2 1/2' lost									
400.5	407.8	3 ^{dt}	pale green/brown fgs actinolite diopside skarn softer pit jointing traces bright red hematite throughout - carbonatic									
407.8	410.0	3 ⁵ /5	white grey green mixed skarnified throughout with carbonate remaining banding									

NEW IMPERIAL MINES LIMITED
 MINING DIVISION - WHITEHORSE
 YUKON TERRITORY

Hole No. 1-C-114 Page No. 7

FOOTAGE		ROCK CLASSIFICATION <small>EPID. DIOP. GARN. SERP. QTZ/SIL. ACTINO TREMO. CHLO. CRYSTALLINE. SHEARING. VEINS. FRACTURING. FOLIATION. GRAIN SIZE, TEXTURE</small>	MINERALIZATION		ASSAY DATA							
From	To		TYPE	%	SAMPLE NO.	WID _{th}	RECOV.	%CU	%FE	MOLY	AU/AG	INSOL.
415.4	426.7	3 ^{hws} /5 white and pale green skarnified limestone traces red hematite										
426.7	429.0	9 ^b 419.7 - 420.2 dull green basic dykelet Fault. broken core - (3 ^d /4 ^g .) pale brown/green ? skarnified quartzite.										
429.0	434.7	✓ brecciated skarnified quartzite? moderate jointing										
434.7	437.0	✓ Fault - gouge and broken core 1 1/2' lost. 9 ^b 433.7 - 434.0 chilled dykelet. irreg ? 10° 435.0 chilled dyke material in fault.										
437.0	441.0	3 ^{ft} bleached white, cream, green. ?feldspar tremolite? skarn possibly after quartzite.										
441.0	445.0	3 ^{ate} med grained dark green skarn - weak remnant diabtic texture										
445.0	450.0	9 ^b dark green f-med. grained basic dyke. N 445.0 6" broken core 450.0 chilled contact. 80°.										
450.0	502.0	8 ^a /3 ^{fdz} pale green/white pink mottled skarn										

NEW IMPERIAL MINES LIMITED
 MINING DIVISION - WHITEHORSE
 YUKON TERRITORY

Hole No. L.C. 114 Page No. 9

FOOTAGE			ROCK CLASSIFICATION <small>EPID. DIOP. GARN. SERP. QTZ/SIL. ACTINO TREMO. CHLO. CRYSTALLINE. SHEARING. VEINS. FRACTURING. FOLIATION. GRAIN SIZE, TEXTURE</small>	MINERALIZATION		ASSAY DATA						
From	To			TYPE	%	SAMPLE NO.	WIDTH	RECOV.	%CU	%FE	MOLY	AU/AG
570.5	597.0	9 ⁶ π	fine grained brown grey (red tinged) porphyritic dyke. 2-10 MM white/pale green subhedral and subhedral feldspar phenocrysts. - moderate jointing broad core. 597.4 v.f. gr. chilled contact with flow banding 30'									
597.4	609.0	4 ⁹ θ	grey/red-brown med. gr. feldspathic quartzite - patches weak dioritic texture (remnant) -- 5985-600.0 broken core.									
609.0	624.0	4 ⁹ θ / π	? dioritic feldspathic quartzite weak banding - once sedimentary - good coreing									
624.0	635.3	3 ⁵ μ	pale green diopside (feldspar) skarn traces remnant dioritic texture otherwise fine grained									
635.3	660.0	9 ⁶	medium grained diabase dyke - chilled fine grained matrix to 640' - good coreing 635.3 irregular chilled contact. ? 60' white feldspar xtd laths 1-15 MM long.									

NEW IMPERIAL MINES LIMITED
 MINING DIVISION - WHITEHORSE
 YUKON TERRITORY

Hole No. LC-114 Page No. 1/1

FOOTAGE			ROCK CLASSIFICATION EPID. DIOP. GARN. SERP. QTZ/SIL. ACTING TREMO. CHLO. CRYSTALLINE. SHEARING. VEINS. FRACTURING. FOLIATION. GRAIN SIZE. TEXTURE	MINERALIZATION				ASSAY DATA				
From	To			TYPE	%	SAMPLE NO.	WIDTH	RECOV.	%CU	%FE	MOLY	AU/AG
7255	814.0	4gg	pls grey and white feldspathic qtz. with 1-2% pyrite. weak banding - irregular - very hard - 4g predominating towards end									
		~	745 - 747 broken core									
		~	752 - 755 broken core - 1' lost.									
		~	757 - 758 broken core									
		~	760 - 761 broken core									
		--	765 - 766 broken									
		--	767 - 768 broken									
			768 - 814 jointed to well jointed minor banding @ 70°: 1/4" garnet stringers 209 x 814'									
	814.0		Note ends. B.O. core Crown Diamond Drilling									

NEW IMPERIAL MINES LIMITED
MINING DIVISION - WHITEHORSE
YUKON TERRITORY

FOOTAGE			ROCK CLASSIFICATION EPID. DIOP. GARN. SERP. QTZ/SIL. ACTINO TREMO. CHLO. CRYSTALLINE. SHEARING. VEINS. FRACTURING. FOLIATION. GRAIN SIZE. TEXTURE	MINERALIZATION		ASSAY DATA						
From	To			TYPE	% Cu	SAMPLE NO.	WIDTH	RECOV.	% CU	% FE	MOLY	AU/AG
		3 _g	78.2-79.7 fine grained garnet skarn with 5% pyrite < 1% chalcopyrite - diss mainly at joints	py. cpy	2%							
			82.4-83.5 25% pyrite in core	pyrite								
			86.5-87.0 25% pyrite	pyrite								
87.0	89.8	N	fault broken core. miscellaneous fragments skarnified diorite and skarn (3 act)									
89.8	96.7	3 st	pale green brown skarn with serpentine, garnet ? diopside. moderately soft well jointed.									
96.7	159.7	3 rd / 8 th	White and pale pink mottled green skarnified diorite. hard core fair to good coning brown garnet plentiful 120-154 act									
		3 rd	115-120 grey tremolite tabe chlorite skarn									
		3 rd	157-159 orange pink zirconite (thulite).									
159.7	164.0	3/2 ^{as}	pale to dark green actinolite serpentine heavily carbonated. with pyrite and minor diss. chalcopyrite - well jointed	py. cpy	1/4%							
164.0	209.1	3/2 ^{dat}	pale grey green diopside skarn - sparse patches chalcopyrite - blebs rather than disseminated. mainly good coning.	cpy	1/2%							
			184-185.5 broken.									

NEW IMPERIAL MINES LIMITED
MINING DIVISION - WHITEHORSE
YUKON TERRITORY

Hole No. 66-115 Page No. 3 of 4

FOOTAGE			ROCK CLASSIFICATION EPID. DIOP. GARN. SERP. QTZ/SIL. ACTINO TREMO. CHLO. CRYSTALLINE. SHEARING. VEINS. FRACTURING. FOLIATION. GRAIN SIZE. TEXTURE	MINERALIZATION		ASSAY DATA						
From	To			TYPE	%	SAMPLE NO.	WIDTH	RECOV.	%CU	%FE	MOLY	AU/AG
209.1	211.8	9 ^b	fine grained black basaltic dyke. 209.1 sharp chilled contact 45° 211.8 irregular chilled contact ? 35°									
211.8	219.0	3/2	old pale to dark green skarn with sparse blebs chalcopyrite & trace pyrite	cpy.	1/2%							
219.0	223.3	3 ^{act}	pale grey and pale green actinolite jointed in places.									
223.3	224.2	9 ^b	chilled basic dykelet. 223.3 chilled contact 40° 224.2 broken contact - small fault.									
224.2	226.2	3 ^a	white quartz rich skarn with actinolite jointed									
226.2	230.3	3/2 ^{la}	pale to dark green diopside talc actinolite skarn - heavily carbonated - patches 1/4-1/2" chalcopyrite sparse in core - some disc. chalcopyrite fair zoning	cpy	1/2%							
230.3	232.4	5	white (grey) and micaceous pale green (serpentinized) limestone.									

NEW IMPERIAL MINES LIMITED
 MINING DIVISION - WHITEHORSE
 YUKON TERRITORY

Hole No. LC 115 Page No. 4 of 4

FOOTAGE			ROCK CLASSIFICATION EPID. DIOP. GARN. SERP. QTZ/SIL. ACTINO TREMO. CHLO. CRYSTALLINE. SHEARING. VEINS. FRACTURING. FOLIATION. GRAIN SIZE. TEXTURE	MINERALIZATION		ASSAY DATA						
From	To			TYPE	%	SAMPLE NO.	WIDTH	RECOY.	%CU	%FE	MOLY	AU/AG
232.4	233.3	9b	dark grey green fine grained basic dykelet 55°									
233.3	235.7	5	white / grey limestone weak banding (bedding)	25°								
			234.6 6" darker replacement zone limestone with disseminated chalcopyrite	cpy.								
235.7	240.6	9b	fine grained dark grey / black basic dyke 230° fair core except									
		--	239-240 broken.									
240.6	282.0	3 ^{ad}	pale green / grey medium (massive coarse) grained actinolite diopside skins - hard	good	core							
			265.0 bleb chalcopyrite	cpy	tr.							
		--	270.0 6" broken core									
			279.0 bleb chalcopyrite	cpy	tr.							
282.0	283.0	2/3 ^{adt}	green and grey medium grained actinolite diopside skins with disseminated chalcopyrite - good core.		1%							
283.0	293.0	3 ^{dz} /80	medium grained zoned (pink) diopside (green) skins with strong remnant diopside texture									
293.0	302.0	3 ^{gt}	brown and pink garnet zoned (pink) skins good core - hard.									

NEW IMPERIAL MINES LIMITED
 MINING DIVISION - WHITEHORSE
 YUKON TERRITORY

Hole No. LC 115 Page No. 5 of

FOOTAGE			ROCK CLASSIFICATION <small>EPID. DIOP. GARN. SERP. QTZ/SIL. ACTING TREMO. CHLO. CRYSTALLINE. SHEARING. VEINS. FRACTURING. FOLIATION. GRAIN SIZE. TEXTURE</small>	MINERALIZATION		ASSAY DATA						
From	To			TYPE	% Cu	SAMPLE NO.	WIDTH	RECOV.	% CU	% FE	MOLY	AU/AG
302.0	312.0	qb.	fine grained dark grey green basic dyke. 302.0 sharp but uneven chilled contact 30° 312.0 sharp even chilled contact 40°									
312.0	343.0	3/2 nd	pale grey/green fine-medium grained actinolite diopside skarn. dis. chalcopyrite sparse throughout - good coning.	cpy				1/4%				
343.0	361.4	3 rd	pale grey green actinolite diopside skarn traces chalcopyrite.	cpy				tr.				
361.4	363.4	3 rd /5	bright green serpentine skarn ? after limestone contacts diffuse but appx at 45°									
363.4	369.6	3 rd	actinolite skarn. some talc/chlorite in soft sections									
		2 nd	363.4 - 363.7 dis. chalcopyrite.	cpy				1%				
369.6	417.0	3 rd /5	green and white skarnified limestone with bright green serpentine and pale green diopside trace magnetite - fair coning. weak banding 70° carbonated throughout.									
417.0	421.0	4g	dark grey/black micaceous sediment with									

NEW IMPERIAL MINES LIMITED
MINING DIVISION - WHITEHORSE
YUKON TERRITORY

Hole No. LC 115 Page No. 6 of

FOOTAGE			ROCK CLASSIFICATION EPID. DIOP. GARN. SERP. QTZ/SIL. ACTINO TREMO. CHLO. CRYSTALLINE. SHEARING. VEINS. FRACTURING. FOLIATION. GRAIN SIZE, TEXTURE	MINERALIZATION		ASSAY DATA						
From	To			TYPE	%	SAMPLE NO.	WIDTH	RECOV.	%CU	%FE	MOLY	AU/AG
			f-gc disc. pyrite.									
421.0	426.0	3 ⁵ dc	green grey fine-med grained diopside actinolite serpentine skarn. good coning.									
426.0	492.5	5/3 ^s	white and pale green serpentined limestone banding (c. 50°) good coning.									
492.5	507.0	4g/13 ^d	brownish quartzite with layers diopside skarn with garnet and feldspar. banding 50° contorted in places. good coning.									
507.0	528.0	4g	dark green and dark grey feldspathic sediments - fair coning 507-516 4 stringers decrite up to 2" wide-70°	pyrite.								
528.0	597.3	4g/g	med. grey/green fine & medium grained feldspathic sediments and quartzite - banding 80° 554-571 feldspar developing weak dioritic texture. --- 560-573 jointed core. == 573-591 broken core - near full recovery -- 594-595	pyrite 1%								

Date Nov 19 73

113 sec 14

Page No. 1

LC 115

Sample No.	Cu	Fe	Moly	Au/Ag	Insol.	Remarks
53109	.14					160 - 165
53110	.10					165 - 170
53111	.12					170 - 175
53112	.12					175 - 180
53113	.12					180 - 185
53114	.44					185 - 190
53115	.66					190 - 195
53116	.18					195 - 200
53117	.14					200 - 205
53118	.04					205 - 209
53119	.26					212 - 217
53120	TR.					217 - 222
53121	.12					222 - 227
53122	.08					227 - 232
53123	TR.					240.6 - 245
53124	.22					245 - 250
53125	.24					250 - 255
53126	.04					255 - 260
53127	.14					260 - 265
53128	.04					265 - 270
53129	TR.					270 - 275
53130	.04					275 - 280
53131	.06					280 - 285
53132	TR.					285 - 290
53133	TR.					290 - 295
53134	TR.					295 - 302
53135	.12					312 - 317 ✓
53136	.08					317 - 322
53137	.08					322 - 327
53138	.10					327 - 332
53139	.26					332 - 337
53140	.04					337 - 342
53141	.04					342 - 347
53142	.04					347 - 352
53143	.09					352 - 357
53144	.09					357 - 362
53145	.09					362 - 367
53146	.04					367 - 372
53147	TR.					372 - 377



GEOLOGICAL LEGEND

CENOZOIC
 QUATERNARY
 PLEISTOCENE & RECENT
 735 [Q] ALLUVIUM, GLACIAL DRIFT
 746 [10] MILES CANYON BASALT

POST CRETACEOUS
 INTRUSIVE DYKES OR SILLS
 755 [9a] ACIDIC GRANITIC, APLITE, FELSITE, 9a - may prediate skarn
 734 [9b] BASIC ANDESITE, DIORITE, POST-ORE 9b - porphyry

MESOZOIC
 CRETACEOUS
 COAST INTRUSIVES
 752 [8] DIORITE 8a ALTERED (ENDOSKARN)
 8b MINERALIZED ENDOSKARN, MALACHITE, CHALCOPYRITE, BORNITE
 752 [7] 7g GRANITE, 7b GRANODIORITE, 7m QUARTZ - MONZONITE

LOWER JURASSIC & LATER
 746 1/2 [6] LABERGE GROUP
 UPPER TRIASSIC
 LEWES RIVER GROUP (METAMORPHOSED)
 740 1/2 [5] LIMESTONE AND/OR DOLOMITE, 5b- CARBONACEOUS LIMESTONE

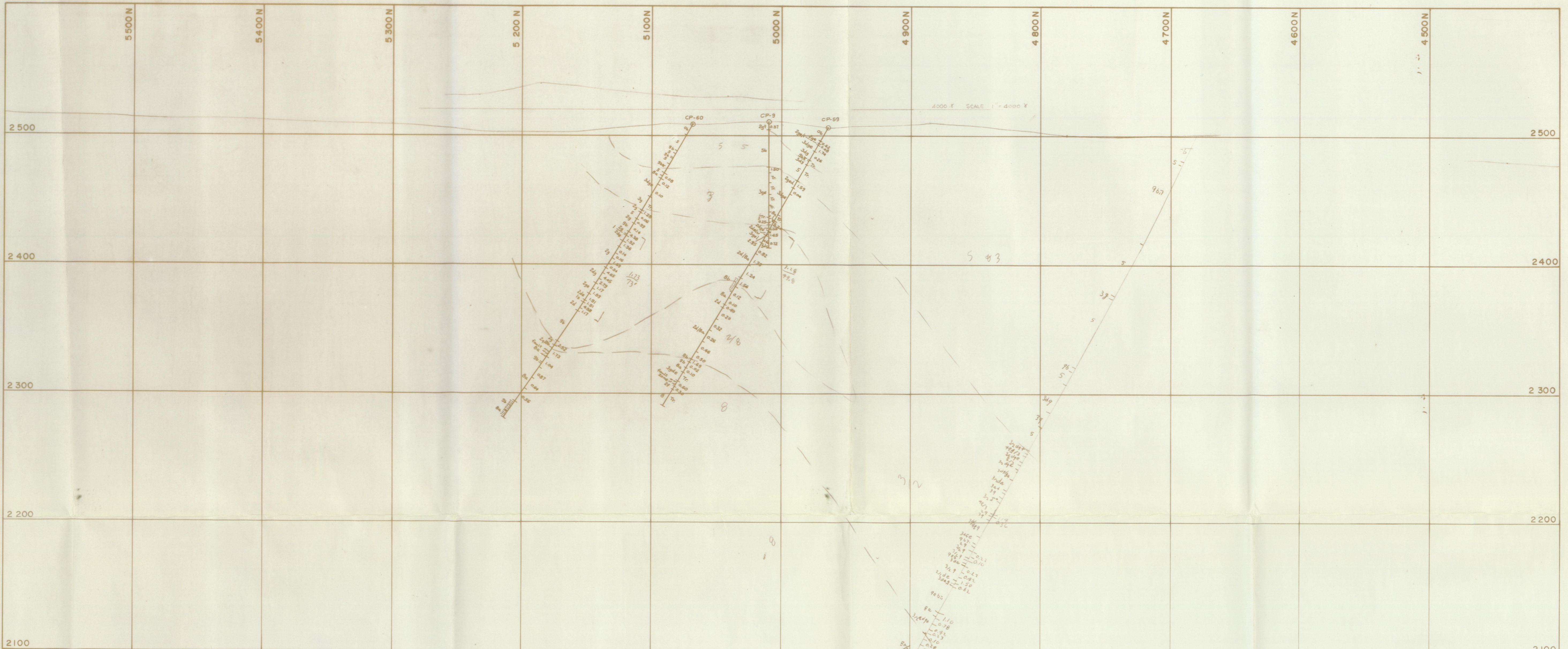
736 1/2 [4] QUARTZITE, GREYWACKE, 4q QUARTZITE
 4g GREYWACKE
 ARGILLITE, ARKOSE 4k ARKOSE

738 [3] SKARN BARREN, WITH..... a - ACTINOLITE
 c - CHLORITE
 d - DIOPSIDE
 745 [2] SKARN MINERALIZED, BORNITE, CHALCOPYRITE, EPIDOTE
 COPPER OXIDES, WITH..... f - FELDSPAR
 g - GARNET z - ZOISITE
 745 [1] SKARN MAGNETITE, s - SERPENTINE
 BORNITE, CPY, VALERIITE, t - TREMOLITE
 COPPER OXIDES, WITH..... w - WOLLASTONITE

HOLE No.	DIP	DEPTH
C.P. -63	45°N	320'
C.P. -64	45°N	270'
C.P. 68	72°	527'

NEW IMPERIAL MINES LTD.
 WHITEHORSE Y.T.
COWLEY PARK SECTION 7 550 E

DR BY I. SCHMITT	APP'D BY D. TENNEY	REVISIONS
DATE MAY 14, 1971	SCALE 1" = 40'	
REF. No.	DWG. No.	



GEOLOGICAL LEGEND

CENOZOIC
 QUATERNARY
 PLEISTOCENE & RECENT
 735 [Q] ALLUVIUM, GLACIAL DRIFT
 746 [10] MILES CANYON BASALT
 POST CRETACEOUS
 INTRUSIVE DYKES OR SILLS
 755 [9a] ACIDIC GRANITIC, APLITE, FELSITE, 9a - may
 734 [9b] BASIC ANDESITE, DIORITE, POST-ORE 9b - porphyry

MESOZOIC
 CRETACEOUS
 COAST INTRUSIVES
 752 [8] DIORITE 8a ALTERED (ENDOSKARN)
 8i MINERALIZED ENDOSKARN,
 MALACHITE, CHALCOPYRITE, BORNITE
 752 [7] 7g GRANITE, 7b GRANODIORITE,
 7m QUARTZ - MONZONITE
 LOWER JURASSIC & LATER
 746 1/2 [6] LABERGE GROUP
 UPPER TRIASSIC
 LEWES RIVER GROUP (METAMORPHOSED)
 740 1/2 [5] LIMESTONE AND/OR DOLOMITE, 5b - CARBONACE-
 OUS LIMESTONE

736 1/2 [4] QUARTZITE, GREYWACKE, 4q QUARTZITE
 4g GREYWACKE
 4k ARKOSE
 ARGILLITE, ARKOSE
 738 [3] SKARN BARREN, WITH G - ACTINOLITE
 c - CHLORITE
 d - DIOPSIDE
 745 [2] SKARN MINERALIZED,
 BORNITE, CHALCOPYRITE,
 COPPER OXIDES, WITH e - EPIDOTE
 f - FELDSPAR
 745 [1] SKARN MAGNETITE,
 BORNITE, CPY, VALERIITE,
 COPPER OXIDES, WITH g - GARNET z - ZOISITE
 s - SERPENTINE
 t - TREMOLITE
 w - WOLLASTONITE

HOLE No.	DIP	DEPTH
CP - 9	90°	98'
CP - 60	60°N	271'
CP - 59	60°N	250'
CP - 69	64°N	478'

NEW IMPERIAL MINES LTD.
 WHITEHORSE YT
COWLEY PARK SECTION 7 250 E

DR BY I. SCHMITT	APP'D BY D. TENNEY	REVISIONS
DATE MAY 14, 1971	SCALE 1" = 40'	
REF No	DWG. No	



GEOLOGICAL LEGEND

CENOZOIC

QUATERNARY
PLEISTOCENE & RECENT

735 [Q] ALLUVIUM, GLACIAL DRIFT

746 [10] MILES CANYON BASALT

POST CRETACEOUS
INTRUSIVE DYKES OR SILLS

755 [9a] ACIDIC GRANITIC, APLITE, FELSITE, 9a - may prediate skarn

734 [9b] BASIC ANDESITE, DIORITE, POST-ORE 9b - porphyry

MESOZOIC

CRETACEOUS
COAST INTRUSIVES

752 [8] DIORITE 8a ALTERED (ENDOSKARN)
8i MINERALIZED ENDOSKARN,
MALACHITE, CHALCOPYRITE, BORNITE

752 [7] 7g GRANITE, 7b GRANODIORITE,
7m QUARTZ - MONZONITE

LOWER JURASSIC & LATER

746 1/2 [6] LABERGE GROUP

UPPER TRIASSIC
LEWES RIVER GROUP (METAMORPHOSED)

740 1/2 [5] LIMESTONE AND/OR DOLOMITE, 5b- CARBONACE-
OUS LIMESTONE

736 1/2 [4] QUARTZITE, GREYWACKE, 4q QUARTZITE
4g GREYWACKE
4k ARKOSE

738 [3] SKARN BARREN, WITH..... a - ACTINOLITE
c - CHLORITE
d - DIOPSIDE

745 [2] SKARN MINERALIZED,
BORNITE, CHALCOPYRITE,
COPPER OXIDES, WITH..... e - EPIDOTE
f - FELDSPAR

745 [1] SKARN MAGNETITE,
BORNITE, CPY, VALERIITE,
COPPER OXIDES, WITH..... g - GARNET z - ZOISITE
s - SERPENTINE
t - TREMOLITE
w - WOLLASTONITE

HOLE No	DIP	DEPTH
C.P.-47	55°N	126'
C.P.-48	55°N	170'
C.P.-49	55°N	306.2'
C.P.-70		

NEW IMPERIAL MINES LTD.
WHITEHORSE, Y.T.
COWLEY PARK SECTION 7 900 E

DR BY I. SCHMITT	APP'D BY H. LEISTRA	REVISIONS
DATE	SCALE 1" = 40'	
REF No	DWG No	

1800

NEW IMPERIAL MINES LIMITED
MINING DIVISION - WHITEHORSE
YUKON TERRITORY

Hole No. BIC 44 Page No. 6

FOOTAGE		ROCK CLASSIFICATION EPID. DIOP. GARN. SERP. QTZ/SIL. ACTINO TREMO. CHLO. CRYSTALLINE. SHEARING. VEINS. FRACTURING. FOLIATION. GRAIN SIZE. TEXTURE	MINERALIZATION		ASSAY DATA							
From	To		TYPE	%	SAMPLE NO.	WIDTH	RECOV.	%CU	%FE	MOLY	AU. AG	INSOL
469	475	3g e d minor 8a, brn, grn tr cp ≈ rubble 469 - 471	cp	tr								
475	477	8a pale grn, lchd, carbd										
477	493	9b dk gy med gr basic dyke broken at cts										
493	496.5	8a gy grn, carbd, no sulphides seen 2.5' lost core 393 - 396										
496.5	500	3g minor, e, d, m, carbd, dissem fg py tr cp	cp	tr								
500	508	3d a green with pale grn feldspar remnants after 4g? tr py										
508	516.9	3g e d, pale red grn, calcareous tr dissem fg cp	cp	1/4								
516.9	527	8a / 3g e f, gy, pink, grn, dissem fg cp core broken 524 - 525'	cp	.5								

NEW IMPERIAL MINES LIMITED
 MINING DIVISION - WHITEHORSE
 YUKON TERRITORY

Hole No. B1C 44 Page No. 7

FOOTAGE			ROCK CLASSIFICATION <small>EPID. DIOP. GARN. SERP. QTZ/SIL. ACTING TREMO. CHLO. CRYSTALLINE. SHEARING. VEINS. FRACTURING. FOLIATION. GRAIN SIZE. TEXTURE</small>	MINERALIZATION				ASSAY DATA				
From	To			TYPE	%	SAMPLE NO.	WIDTH	RECOV.	%CU	%FE	MOLY	AU. AG
527	530	9b	med gy basic dyke 1' lost									
530	532.5	8a	40% mafics tr fg cp									
532.5	555	9b ≈	dk gy basic dyke 1' recovery 545' - 555'									
555	563	8a 9b	dk gy grn, tr cp 1" dyke 60° @ 561'									
563	573	8a	≈ 3' recovery, hly shrd frags 3 df									
573	574.5	9a	b _{ii} med gy porphyritic dyke									
574.5	615	4g	f grey hly sheared, broken feldspathic meta sediment? feldspar grains both angular and rounded, may possibly be very altd 9a b _{ii} dyke 6' recovery 578 - 596 2" diorite dykes @ 40° at 604.5' and 614', chill contacts									

NEW IMPERIAL MINES LIMITED
 MINING DIVISION - WHITEHORSE
 YUKON TERRITORY

Hole No. B1C 44 Page No. 8

FOOTAGE		ROCK CLASSIFICATION <small>EPID. DIOP. GARN. SERP. QTZ/SIL. ACTINO TREMO. CHLO. CRYSTALLINE. SHEARING. VEINS. FRACTURING. FOLIATION. GRAIN SIZE, TEXTURE</small>	MINERALIZATION		ASSAY DATA							
From	To		TYPE	%	SAMPLE NO.	WIDTH	RECOV.	%CU	%FE	MOLY	AU/AG	INSOL
615	619	8a med - fg minor K fels										
619	620.8	4g f incl feldspathic sed. 8a 2" 8a from 620'										
620.8	624	3g d rose - brn skarn, strks & dissem py										
624	626.5	4g f sheared - broken										
626.5	627.5	8a/ 3 g f dissem py	py	1								
627.5	630.5	4g f cg feldspathic sed, tr fg py	py	1/2								
630.5	643.5	3d green, minor 8a & 3g rubble 637 - 642, frags 8a, 3d, & 9b tr py thruout	py	<.5								
643.5	668.2	3g a e red grn, dissem py & patchy cp 8a from 658 - 661 white pink fg 5% py										

NEW IMPERIAL MINES LIMITED
 MINING DIVISION - WHITEHORSE
 YUKON TERRITORY

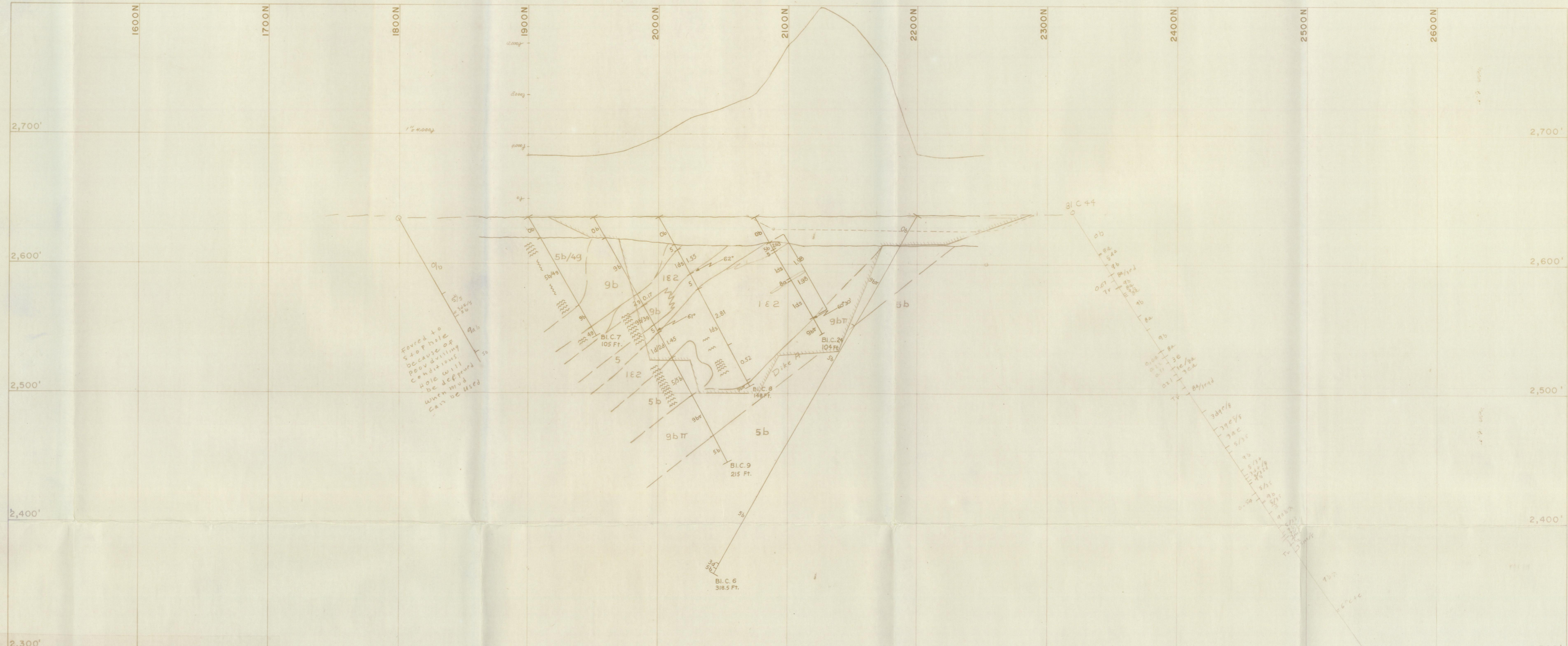
Hole No. BIC 44 Page No. 12

FOOTAGE		ROCK CLASSIFICATION <small>EPID. DIOP. GARN. SERP. QTZ/SIL. ACTINO TREMO. CHLO. CRYSTALLINE. SHEARING. VEINS. FRACTURING. FOLIATION. GRAIN SIZE. TEXTURE</small>	MINERALIZATION		ASSAY DATA							
From	To		TYPE	%	SAMPLE NO.	WIDTH	RECOV.	%CU	%FE	MOLY	AU/AG	INSOL
		Samples 55.9 - 60.9			53283	5	5	0.07				
		60.9 - 67			53284	6.1	6.1	Tr				
		127 -132			5	5	5	0.04				
		132 -137			6	5	5	0.22				
		137 -143			7	6	6	0.11				
		148 -152.6			53288	4.6	4.6	0.21				
		160 -165			53289	5	5	Tr				
		258 -263			53360	5	5	.54				
		297.5 -300.4			53361	2.9	2.9					
		300.4 -306.4			2	6.0	6.0					
		306.4 -312.7			3	6.3	6.3	Tr				
		456 -461			4	5	5	Tr				
		461 -466			5	5	4	.14				
		466 -471			6	5	5	.30				
		471 -477			7	6	4.5	.10				
		493 -500			8	7	4	.16				
		508 -513			53369	5	3	Tr				

NEW IMPERIAL MINES LIMITED
 MINING DIVISION - WHITEHORSE
 YUKON TERRITORY

Hole No. B1C 44 Page No. 13

FOOTAGE		ROCK CLASSIFICATION EPID. DIOP. GARN. SERP. QTZ/SIL. ACTINO TREMO. CHLO. CRYSTALLINE. SHEARING VEINS. FRACTURING. FOLIATION. GRAIN SIZE. TEXTURE	MINERALIZATION		ASSAY DATA							
From	To		TYPE	%	SAMPLE NO.	WIDTH	RECOV.	%CU	%FE	MOLY	AU/AG	INSOL
		Samples 513 - 517			53370	4	3.5	.06				
		517 - 522			1	5	4.5	.32				
		522 - 527			2	5	4.5	.20				
		530 - 532.5			3	2.5	2.5	.22				
		555 - 563			4	8	7	.02				
		563 - 573			5	10	3	.04				
		630 - 635			6	5	5	.02				
		- 640			7	5	3	.10				
		- 645			8	5	4	.08				
		- 650			9	5	4	.18				
		- 655			80	5	5	.16				
		- 660			1	5	5	.12				
		- 665			2	5	5	.64				
		- 668.2			3	3.2	3.2	.70				
		687.5 - 692.5			4	5	5	Tr				
		692.5 - 697			5	4.5	4.5	.40				
		703.5 - 708.0			6	4.5	4.5	.38				
		- 714.7			53387	6.7	6.7	1.44				



GEOLOGICAL LEGEND

CENOZOIC
 QUATERNARY
 PLEISTOCENE & RECENT
 735 [Q] ALLUVIUM, GLACIAL DRIFT
 746 [10] MILES CANYON BASALT

POST CRETACEOUS
 INTRUSIVE DYKES OR SILLS
 755 [9a] ACIDIC GRANITIC, APLITE, FELSITE, 9a - may predate skarn
 734 [9b] BASIC ANDESITE, DIORITE, POST-ORE, 9b - porphyry

MESOZOIC
 CRETACEOUS
 COAST INTRUSIVES
 752 [8] DIORITE 8a ALTERED (ENDOSKARN)
 8i MINERALIZED ENDOSKARN,
 MALACHITE, CHALCOPYRITE, BORNITE
 752 [7] 7g GRANITE, 7b GRANODIORITE,
 7m QUARTZ-MONZONITE

LOWER JURASSIC & LATER
 746 [5] LABERGE GROUP
 UPPER TRIASSIC
 LEWES RIVER GROUP (METAMORPHOSED)
 740 [5] LIMESTONE AND/OR DOLOMITE, 5b-CARBONACE-
 OUS LIMESTONE

736 [4] QUARTZITE, GREYWACKE, 4q QUARTZITE
 4g GREYWACKE
 ARGILLITE, ARKOSE 4k ARKOSE

738 [3] SKARN BARREN, WITH G-ACTINOLITE
 c-CHLORITE
 745 [2] SKARN MINERALIZED, d-DIOPSIDE
 BORNITE, CHALCOPYRITE, e-EPIDOTE
 COPPER OXIDES, WITH f-FELDSPAR z-ZOISITE

745 [1] SKARN MAGNETITE, g-GARNET
 BORNITE, CPY, VALERITE, s-SERPENTINE
 COPPER OXIDES, WITH t-TREMOLITE
 w-WOLLASTONITE

HOLE No.	DIP	DEPTH
B.I.C. 6	60°S	318.5'
B.I.C. 7	60°N	105'
B.I.C. 8	60°N	148'
B.I.C. 9	60°N	215'
B.I.C. 24	60°N	104'

NEW IMPERIAL MINES LTD.
 WHITEHORSE Y.T.
BEAR CUB - SECTION - 3400 E

DR BY R.G. DODDS	APP'D BY H.J. LEISTRA	REVISIONS
DATE APRIL 10, 1970	SCALE 1" = 40'	
REF No.	DWG No.	

NEW IMPERIAL MINES LIMITED
 MINING DIVISION - WHITEHORSE
 YUKON TERRITORY

Hole No. CP-68 Page No. 278

FOOTAGE			ROCK CLASSIFICATION EPID. DIOP. GARN. SERP. QTZ/SIL. ACTINO TREMO. CHLO. CRYSTALLINE. SHEARING. VEINS. FRACTURING. FOLIATION. GRAIN SIZE. TEXTURE	MINERALIZATION		ASSAY DATA								
From	To			TYPE	%	SAMPLE NO.	WIDTH	RECOV.	%CU	%FE	MOLY	AU/AG	INSOL	
54.8	98.0	5	white and pale grey banded (60-80) limestone good comp.											
			57.9-66.3 dark grey to black silty limestone with f. gr. disc pyrrhotite	pyrite	1%									
		3 rd	70.0-75.3 pale brown green garnet diopside skarn	pyrrhotite	1%									
98.0	100.9	3 rd	1/4 brown and green garnet diopside skarn + disc. pyrite. core broken - ? skarnified quartzite.											
100.9	108.0	5	grey limestone banding @ 90°											
108.0	114.5	4 th /3 rd	pale green brown skarnified quartzite with garnet and diopside.	pyrite	2%									
114.5	115.9	8 th	med-fine grained dolomite - 1/8" stringers pyrite contacts with skarn @ 80°											
115.9	128.0	4 th /3 rd	skarnified green brown quartzite as before with garnet and associated fine grained disc chalcopyrite. traces molybdenite.	chalcopyrite	1%									
				molybdenite	tr.									

NEW IMPERIAL MINES LIMITED
MINING DIVISION - WHITEHORSE
YUKON TERRITORY

Hole No. C.P.-68 Page No. 378

FOOTAGE			ROCK CLASSIFICATION EPID. DIOP. GARN. SERP. QTZ/SIL. ACTINO TREMO. CHLO. CRYSTALLINE. SHEARING. VEINS. FRACTURING. FOLIATION. GRAIN SIZE, TEXTURE	MINERALIZATION		ASSAY DATA						
From	To			TYPE	%	SAMPLE NO.	WIDTH	RECOV.	%CU	%FE	MOLY	AU/AG
128.0	156.1	3 rd w	pale brown garnet skarn with white wollastonite and green diopside - good wearing quartzite remnants to 138'									
			120.0 - 129.4 fine greenish hornblende, chalcopyrite and molybdenite	bo. cpy.	.2% Cu							
			138.2 - 143.4									
			140.5 - 141.0 - 3% copper - waxy	MoS ₂	tr.							
			143.3 - 143.6 3% copper - leached appearance.									
156.1	166.0	5	white and grey limestone banding @ 76'									
		3 ^g	152.9-153.6 brown garnet skarn.									
166.0	172.2	3 rd 1/2	pale brown and green garnet diopside skarn with diss. molybdenite patchy diss chalcopyrite	MoS ₂	1%							
				cpy	.2% Cu							
172.2	176.5	5	white limestone n. before banding @ 60'									
176.5	180.6	3 rd g	green and brown diopside garnet skarn									
180.6	181.5	2 nd	brown garnet skarn heavy diss. plates molybdenite (and barite)	molybdenite	3%							
				barite	4% Cu							
181.8	209.9	3 rd w	brown green and white skarn									

NEW IMPERIAL MINES LIMITED
 MINING DIVISION - WHITEHORSE
 YUKON TERRITORY

Hole No. CP-68 Page No. 4 of 8

FOOTAGE			ROCK CLASSIFICATION <small>EPID. DIOP. GARN. SERP. QTZ/SIL. ACTINO TREMO. CHLO. CRYSTALLINE. SHEARING. VEINS. FRACTURING. FOLIATION. GRAIN SIZE. TEXTURE</small>	MINERALIZATION		ASSAY DATA						
From	To			TYPE	%	SAMPLE NO.	WIDTH	RECOY.	%CU	%FE	MOLY	AU/AG
			with garnet, diopside tremolite? wollastonite									
209.9	215.2	5	white grey weakly banded (60°) limestone skarnified towards end.									
		2 ^{de}	213.8 - 214.9 blebs of barite.	barite.	3.0%							
215.2	219.4	3/2	3 ^{dga} green and brown diopside garnet skarn patchy blebs and disseminated barite chalcocyanite molybdenite	bc. cpy moly	2% Cu 1/2%							
219.4	233.6	3 ^{de}	brown and green garnet epidote skarn good coning - No visible mineralisation									
233.6	239.0	2 ^{de}	brown and green garnet diopside skarn disseminated barite, chalcocyanite minor molybdenite (? chalcocyanite)	bc. cpy MoS ₂	1 1/2%							
239.0	247.4	3/2	3 ^d brown green garnet diopside skarn weak diss. barite	barite	.1%							
247.4	254.0	9 ^{bt}	black fine grained basic dyke with drilled contacts at 75° and ?75° broken jointed case									

NEW IMPERIAL MINES LIMITED
MINING DIVISION - WHITEHORSE
YUKON TERRITORY

Hole No. C.P-68 Page No. 5 of 8

FOOTAGE			ROCK CLASSIFICATION EPID. DIOP. GARN. SERP. QTZ/SIL. ACTING TREMO. CHLO. CRYSTALLINE. SHEARING. VEINS. FRACTURING. FOLIATION. GRAIN SIZE. TEXTURE	MINERALIZATION		ASSAY DATA						
From	To			TYPE	%	SAMPLE NO.	WIDTH	RECOV.	%CU	%FE	MOLY	AU/AG
254.0	255.5	2 nd	hard, fine grained dark grey green diopside actinolite skarn. strong diss. chalcopyrite banding @ 70'	cpy.	1 1/2%							
255.5	265.9	2 nd	brown and green garnet diopside actinolite skarn heavy blebs and diss. chalcopyrite trace bornite core broken.	cpy. bornite	2%							
		≈	259-260 rubble - fault									
		≈	261-264 rubble and fault gouge - Fault. chalcopyrite in faults + pieces skarn and altered diorite.									
265.9	268.1	8 ^a	med. grained altered diorite trace f.g. chalcopyrite good coning.	cpy	1%							
268.1	268.8	7 ^b	fine grained grey basic dyke - chilled contacts @ 40°									
268.8	307.8	8 ^a	medium grained white/black altered diorite some preter diorite weak gneiss banding diss. chalcopyrite and bornite	cpy. bn	1%							
307.8	314.6	3/2 nd	brown garnet skarn diss. chalcopyrite and molybdenite	cpy. MoS ₂	3%							

NEW IMPERIAL MINES LIMITED
MINING DIVISION - WHITEHORSE
YUKON TERRITORY

Hole No. CP-68 Page No. 6 of 8

FOOTAGE			ROCK CLASSIFICATION EPID. DIOP. GARN. SERP. QTZ/SIL. ACTINO. TREMO. CHLO. CRYSTALLINE. SHEARING. VEINS. FRACTURING. FOLIATION. GRAIN SIZE. TEXTURE	MINERALIZATION		ASSAY DATA						
From	To			TYPE	%	SAMPLE NO.	WIDTH	RECOV.	%CU	%FE	MOLY	AU/AG
			308.0-308.2 massive chalcopyrite.	cpy.	25%							
			309.0-311.8 7/2" ? after quartzite.									
314.6	328.0	2 ^{of}	prob green white hard actinolite feldspar skarn. strong diss chalcopyrite and barite in first section. fair coning.	cpy. bo.	1 1/2%							
328.0	334.6	3/2 ^{of}	brown garnet skarn first 12" are magnetic. disseminated chalcopyrite and barite. traces molybdenite leached 328-332.	magnetite cpy. bo. Ho 1/2	min 1 1/2% tr							
334.6	360.0	3/2 ^{of}	1" mixed green and brown skarn. with garnet diopside epidote actinolite - weak banding 30°. 343-346 stronger 1/2" chalcopyrite + calcite 348.2 2" granitic dykelet + diss. cpy. bo. @ 30°	cpy. bo. cpy	1/2% 4%							
360.0	366.0	7 ^b	fine grained green basic dyke with contacts @ 30° (not chilled) slightly sheared									
366.0	527.0	8/8 ^a	med. grained altered diorite (chloritized hornblende) minor bleaching. minor small sections skarnified especially on joints 403-413 fine grained cpy	cpy	2%							

NEW IMPERIAL MINES LIMITED
MINING DIVISION - WHITEHORSE
YUKON TERRITORY

Hole No. C.P-68 Page No. 7 of 8

FOOTAGE		ROCK CLASSIFICATION EPID. DIOP. GARN. SERP. QTZ/SIL. ACTINO TREMO. CHLO. CRYSTALLINE. SHEARING. VEINS. FRACTURING. FOLIATION. GRAIN SIZE, TEXTURE	MINERALIZATION				ASSAY DATA					
From	To		TYPE	%	SAMPLE NO.	WIDTH	RECOV.	%CU	%FE	MOLY	AU/AG	INSOL
		179.5 1/8" v. irregular stringed chalcopyrite with pyrite ± 0°										
		489.5 - 506.6 broken core, fault gouge little or no wire loss Fault. leached appearance.										
527.0		Hole Ends. B.Q. coming Caron Diamond (core split for assay)	Drilling									
		sampled 230.0 - 235.0			53148	5.0	5.0	0.42				
		235 - 240			49	5.0	5.0	1.54				
		240 - 245			50	5.0	5.0	0.14				
		245 - 250			51	5.0	5.0	Tr				
		250 - 255			52	5.0	5.0	0.44				
		255 - 260			53	5.0	5.0	2.29				
		260 - 265			54	5.0	5.0	2.02				
		265 - 270			55	5.0	5.0	1.22				
		270 - 275			56	5.0	5.0	0.12				
		275 - 280			57	5.0	5.0	0.68				
		280 - 285			58	5.0	5.0	0.18				
		285 - 290			59	5.0	5.0	Tr				
		290 - 295			60	5.0	5.0	0.42				
		295 - 300			53161	5.0	5.0	0.16				

NEW IMPERIAL MINES LIMITED
 MINING DIVISION - WHITEHORSE
 YUKON TERRITORY

Hole No. C.P. - 68 Page No. 8.48

FOOTAGE		ROCK CLASSIFICATION <small>EPID. DIOP. GARN. SERP. QTZ/SIL. ACTINO TREMO. CHLO. CRYSTALLINE. SHEARING. VEINS. FRACTURING. FOLIATION. GRAIN SIZE, TEXTURE</small>	MINERALIZATION		ASSAY DATA							
From	To		TYPE	%	SAMPLE NO.	WIDTH	RECOV.	%CU	%FE	MOLY	AU/AG	INSOL.
		300.0 - 305.0			53162	5.0	5.0	0.08	✓			
		305 - 310			63	5.0	5.0	0.92	✓			
		310 - 315			64	5.0	5.0	0.34	✓	0.501	✓	
		315 - 320			65	5.0	5.0	0.72	✓			
		320 - 325			66	5.0	5.0	0.30	✓			
		325 - 330			67	5.0	5.0	0.39	✓			
		330 - 335			68	5.0	5.0	0.30	✓			
		335 - 340			69	5.0	4.5	0.38	✓			
		340 - 345			70	5.0	4.5	2.50	✓			
		345 - 350			71	5.0	5.0	1.22	✓	0.154	✓	
		350 - 355			72	5.0	5.0	0.26	✓			
		355 - 360			53173	5.0	5.0	1.06	✓			

NEW IMPERIAL MINES LIMITED

MINING DIVISION - WHITEHORSE
YUKON TERRITORY

Hole No. CP-69 Page No. 2 of 4

FOOTAGE			ROCK CLASSIFICATION EPID. DIOP. GARN. SERP. QTZ/SIL. ACTINO TREMO. CHLO. CRYSTALLINE. SHEARING. VEINS. FRACTURING. FOLIATION. GRAIN SIZE. TEXTURE	MINERALIZATION		ASSAY DATA						
From	To			TYPE	%	SAMPLE NO.	WIDTH	RECOV.	%CU	%FE	MOLY	AU/AG
		3g	141-142 brown garnet skarn									
		3 rd	152-157 light brown feldsp. thin skarn. dias pyrite pyroxenite trace chalcopyrite	py. pyl. cpy	1% 2% tr							
		3 rd	181.5-186.5 patches white/brown tremolite garnet skarn dias pyroxenite pyrite trace chalcopyrite	py. pyh cpy	1% 1/2%							
204.0	207.0	9 ^b	fine grained dark grey/green basic dyke with sharp chilled contacts @ <u>20°</u>									
207.0	218.7	5	white and grey limestone good coning no regular bedding visible - weak @ 35°									
218.7	244.0	3 rd	green and brown diopside garnet skarn	MoS ₂ cpy	tr tr							
		3/2 ^d	223-226 trace dias chalcopyrite minor molybdenite	cpy MoS ₂	1/2% tr.							
244.0	252.0	3g	brown garnet skarn with minor white molybdenite. fair coning									
258.0	277.6	5	white and grey limestone with banding @ 55-70° fair coning.									

NEW IMPERIAL MINES LIMITED

MINING DIVISION - WHITEHORSE
YUKON TERRITORY

Hole No. CP-69 Page No. 3 of 9

FOOTAGE			ROCK CLASSIFICATION EPID. DIOP. GARN. SERP. QTZ/SIL. ACTINO. TREMO. CHLO. CRYSTALLINE. SHEARING. VEINS. FRACTURING. FOLIATION. GRAIN SIZE, TEXTURE	MINERALIZATION		ASSAY DATA								
From	To			TYPE	%	SAMPLE NO.	WIDTH	RECOV.	%CU	%FE	MOLY	AU/AG	INSOL	
277.6	281.1	3/2	gdt	brown green and white garnet diopside with actinolite skarn with v.f. grained disseminated chalcopyrite	cpy	1/4%								
281.1	283.0	4	gg	/3 dark green/brown banded sediment with 1-2% pyrite - banding 60°										
283.0	288.6	3/2	gde	mixed skarn garnet, diopside epidote. sparse fine grained dis. chalcopyrite	cpy	1/4%								
288.6	291.0	5/3		partly skarnified white and grey limestone mixed pyrite - jointed core.	py	tr.								
291.0	295.0	3/2	g ^{de}	mixed skarn with garnet epidote diopside strong hematite mineralization 291-292'	bc.	1/2%								
295.0	304.0	3	g ^a	possibly skarnified diorite - texture remnant dioritic feldspar quartz, actinolite v.f. grained chalcopyrite molybdenite	cpy. MoS ₂ pyrite	1% tr. tr.								
304.0	313.0	3/2	g ^a	294.5 broken core small basic dyke pale green grey diopside actinolite skarn soft in places (? tale) very fine grained dis chalcopyrite	cpy.	1%								

NEW IMPERIAL MINES LIMITED
 MINING DIVISION - WHITEHORSE
 YUKON TERRITORY

Hole No. C.P. 69 Page No. 5 of 9

FOOTAGE			ROCK CLASSIFICATION <small>EPID. DIOP. GARN. SERP. QTZ/SIL. ACTINO TREMO. CHLO. CRYSTALLINE. SHEARING. VEINS. FRACTURING. FOLIATION. GRAIN SIZE. TEXTURE</small>	MINERALIZATION		ASSAY DATA						
From	To			TYPE	%	SAMPLE NO.	WIDTH	RECOV.	%CU	%FE	MOLY	AU/AG
323.0	333.0	4gg	1/3 strongly shaly feldspathic sediment with 1-2% pyrite dis. - jointed core 330.0 2x 1/2" bands white feldspathic dyke.									
333.0	335.5	2g	brown med-fine grained garnet shaly dis. molybdenite (2%). dis. chalcopyrite (4%) 333.5 4" white calcite stringer + chalcopyrite 40'	MoS ₂	2%							
				cpy	1 1/2%							
335.5	338.0	3g	brown garnet shaly									
338.0	353.0	3d (4gg)?	dark green diopside actinolite shaly with 2% pyrite traces molybdenite trace chalcopyrite. -- 352-353 broken core	pyrite	2%							
				MoS ₂	tr							
				cpy	tr							
353.0	354.0	N	faul. sand and gouge only									
354.0	354.9	3d ^a	brown green									
354.9	359	3+te	white - pale grn shaly									
359	362	9b ²	dk gr, grn, basic dyke cts sheared 70° - filled dark green									

NEW IMPERIAL MINES LIMITED
MINING DIVISION - WHITEHORSE
YUKON TERRITORY

Hole No. CP-69 Page No. 6 of 9

FOOTAGE			ROCK CLASSIFICATION EPID. DIOP. GARN. SERP. QTZ/SIL. ACTINO. TREMO. CHLO. CRYSTALLINE. SHEARING. VEINS. FRACTURING. FOLIATION. GRAIN SIZE, TEXTURE	MINERALIZATION		ASSAY DATA						
From	To			TYPE	%	SAMPLE NO.	WIDTH	RECOV.	%CU	%FE	MOLY	AU/AG
362.0	366.0	2g	brown massive garnet skarn and molybdenite bornite disseminated chalcopyrite	cpy bo. MoS ₂	1 1/2% Cu 1/4%							
366.0	372.5	3 1/2 nd (2g)	fine grained dull green diopside actinolite skarn with traces of remnant banding ? after quartzite. @ 80° traces chalcopyrite and molybdenite in patches throughout	cpy MoS ₂	1/4% Cu .1%							
372.5	374.0	3/2g	brown garnet skarn dis. f. gy. bornite chalcopyrite.	bo. cpy	1/4% Cu							
374.0	376.4	9ab	fine grained light green/grey intermediate d. lye. contacts @ 30°									
376.4	378.0	3 rd	hard dark grey/green diopside actinolite skarn									
378.0	391.8	3/2g	brown garnet skarn disseminated bornite strong in place. - minor chalcopyrite and molybdenite 391.4 - 391.8 leached core + dis. chalcopyrite	bo cpy MoS ₂	3/4% Cu tr.							
391.8	394.6	2 1/1 st	green epidote diopside skarn with dis. bornite and chalcopyrite - few patches magnetite. also disseminated.	bo. cpy	1 3/4% Cu							

NEW IMPERIAL MINES LIMITED
MINING DIVISION - WHITEHORSE
YUKON TERRITORY

Hole No. CL-69 Page No. 799

FOOTAGE			ROCK CLASSIFICATION EPID. DIOP. GARN. SERP. QTZ/SIL. ACTINO TREMO. CHLO. CRYSTALLINE. SHEARING. VEINS. FRACTURING. FOLIATION. GRAIN SIZE, TEXTURE	MINERALIZATION			ASSAY DATA					
From	To			TYPE	%	SAMPLE NO.	WIDTH	RECOV.	%CU	%FE	MOLY	AU/AG
394.6	396.0	3d ⁰⁵	green white and brown mixed stann actinolite diopside garnet feldspar - weak f.g. dioritic texture trace chalcopyrite 355-400 fair zoning - jointed in places	cpy	.1%	Ca						
396.0	420.2	9ab ¹¹	f. grained green/grey intermediate dyke with 1.2 mm white feldspar phenoxite, well jointed 411.0-411.5 chilled dyke material - very f. grained 35° 412.0-412.4 _____ 35° 396.0-396.5 inclusion altered diorite 417.0-418.0 _____ 418.0-420.2 fine grained dyke material as above. not porphyritic.									
		~	418.0 1/4" chip with mud. 35°									
420.2	423.5	8 ^a =	medium grained strongly altered diorite. disseminated chalcopyrite - broken core	cpy	.2%							
		~	422.5-423.0 crushed and broken core - Fault									
423.5	438.7	3/2 ^{ad}	mixed brown and green stann with actinolite epidote garnet diopside disseminated chalcopyrite and minor magnetite - banding 45-70° 430-431 heavy epidote - core leached.	cpy magnetite	3/4%	Ca						
438.7	478.0	8 ^a /8	medium grained altered and unaltered diorite	cpy	<.1%							

NEW IMPERIAL MINES LIMITED
 MINING DIVISION - WHITEHORSE
 YUKON TERRITORY

Hole No. CP-69 Page No. 8 of 9

FOOTAGE		ROCK CLASSIFICATION <small>EPID. DIOP. GARN. SERP. QTZ/SIL. ACTINO TREMO. CHLO. CRYSTALLINE. SHEARING. VEINS. FRACTURING. FOLIATION. GRAIN SIZE, TEXTURE</small>	MINERALIZATION		ASSAY DATA						
From	To		TYPE	%	SAMPLE NO.	WIDTH	RECOV.	%CU	%FE	MOLY	AU/AG
		with fine grained disseminated pyrite (3%) from contact to 447'. Also trace dis. chalcoppyrite to 460'. good coring - some sections with pink tinge. 478.0 end of hole. BQ coring - Carron Diamond Drilling core split for assay.	cpy.	< 1% Cu							
		Samples. 333.0 - 335.3			53174	2.3	2.3	1.14	✓		
		335.3 - 338.0			53175	2.7	2.7	0.36	✓		
		362.0 - 365.2			53180	3.2	3.2	no sample	✓		
		365.2 - 370.2			81	3.0	3.0	0.22	✓		
		370.2 - 374.0			82	3.8	3.8	0.10	✓		
		378.0 - 383.0			53176	5.0	5.0	0.22	✓	0.070	M.I.
		383.0 - 388.0			77	5.0	4.0	0.42	✓		
		388.0 - 393.0			78	5.0	5.0	1.50	✓		
		393.0 - 396.0			79	3.0	3.0	0.62	✓		
		420.2 - 425.2			53183	5.0	5.0	1.10	✓		
		425.2 - 430.2			53184	5.0	5.0	0.78	✓		
		430.2 - 435.2			85	5.0	4.8	0.42	✓		
		435.2 - 438.7			53186	3.2	3.1	0.23	✓		

NEW IMPERIAL MINES LIMITED

MINING DIVISION - WHITEHORSE
YUKON TERRITORY

Hole No. CPT0 Page No. 2

FOOTAGE			ROCK CLASSIFICATION EPID. DIOP. GARN. SERP. QTZ/SIL. ACTINO TREMO. CHLO. CRYSTALLINE. SHEARING. VEINS. FRACTURING. FOLIATION. GRAIN SIZE. TEXTURE	MINERALIZATION		ASSAY DATA						
From	To			TYPE	% CU	SAMPLE NO.	Wt. %	Recov.	%CU	%FE	MOLY	AU/AG
106.7	120.9	39	wd, white - pale red, good cobing									
120.9	128	3 1/2	gd + pale brn, red, dissem cp patchy,	cp	.75							
128	130	46	lt - med gy dissem py	py	2							
130	137.5	5	39t wh - pink, lead 135-137									
137.5	151.5	5	limestone pale gy dnding 70°									
151.5	153.5	4 1/3	med gy, dissem py 2%									
153.5	155.2	80	gy mot + fld dissem py, cb		.5							
155.2	156.8	49	gy dnding 80° - 90°, dissem py	py	2							
156.8	159.7	39w	strawn red									
159.7	159.7	42	pale gy									

NEW IMPERIAL MINES LIMITED
 MINING DIVISION - WHITEHORSE
 YUKON TERRITORY

Hole No. CP70 Page No. 4

FOOTAGE		ROCK CLASSIFICATION <small>EPID. DIOP. GARN. SERP. QTZ/SIL. ACTING TREMO. CHLO. CRYSTALLINE. SHEARING. VEINS. FRACTURING. FOLIATION. GRAIN SIZE. TEXTURE</small>	MINERALIZATION		ASSAY DATA							
From	To		TYPE	%	SAMPLE NO.	WIDTH	RECOV.	%CU	%FE	MOLY	AU/AG	INSOL
316	329	39d, etc, 5' avn bun grn, hvly mineralized py plcbs, & dissem, 10% py	py	10								
329	353	3y minor de, bun red rare spec CP, moss	CP moss	tr tr								
353	368	3dg grn bun good caving										
368	373	39a, rose, grn good caving										
373	375	3dg grn moss on shear along cove to 1/4" dia	CP	tr								
375	438.2	3dg grey, rose, grn, minor e, s, on joints & slips patchy dissem py thruout, good caving, Serp & Carb. slips along cove 419-422 423-424, veins of 48?	CP	tr								

NEW IMPERIAL MINES LIMITED
 MINING DIVISION - WHITEHORSE
 YUKON TERRITORY

Hole No. Cp. 76 Page No. 5

FOOTAGE		ROCK CLASSIFICATION EPID. DIOP. GARN. SERP. QTZ/SIL. ACTINO TREMO. CHLO. CRYSTALLINE. SHEARING. VEINS. FRACTURING. FOLIATION. GRAIN SIZE. TEXTURE	MINERALIZATION		ASSAY DATA							
From	To		TYPE	%	SAMPLE NO.	WIDTH	RECOV.	%CU	%FE	MOLY	AU/AG	INSOL
438.2	444.5	96 qy basic dyke num invdy cte filled slips ct's suvd @ 45°										
444.5	455.0	3 dge grn brn good covering ~ 6" carb & serp from 447.2', 40°, py, cq + vuout	py	2								
455	473	3 dge / 8 grn blk, a few fg? dissem py, rare spec mosz	mosz	tr								
473	477	~ 6" rusty rubble ba?										
477	513.5	3 dge / 8 qy grn, alternating bands of diorite, red shawn and "fresh" mafic diorite dissem & patches py, occ spec mosz, good covering										
513.5	517	0 mafic diorite + v fg py										
517	525	3 dge / 8, patches & dissem cq, py	py	3-4								

NEW IMPERIAL MINES LIMITED
 MINING DIVISION - WHITEHORSE
 YUKON TERRITORY

Hole No. CP70 Page No. 6

FOOTAGE			ROCK CLASSIFICATION <small>EPID. DIOP. GARN. SERP. QTZ/SIL. ACTINO TREMO. CHLO. CRYSTALLINE. SHEARING. VEINS. FRACTURING. FOLIATION. GRAIN SIZE. TEXTURE</small>	MINERALIZATION		ASSAY DATA						
From	To			TYPE	%	SAMPLE NO.	WIDTH	RECOV.	%CU	%FE	MOLY	AU/AG
525	550	8	mg diorite minor Ba 40% mafics, tr Fg py thru out	py	21							
550	556.2	9b	med-dk gy basic dyke cts chilled @ 35° py on slip in dyke @ 556.3									
556.2	562.2	8	mg hbde diorite dissem Fg py	py	1/4							
562.2	563	9b	gy Fg basic dyke cts 75°									
563	575.2	8	as above dissem Fg py tr cp	py cp	1/2 +2							
575.2	581	8a	grn Fg, dissem py, cp, tr mass 3 1/4" healed slip along core 575.2 - 577	py cp	3 2.5							
581	619.3	8	mg diorite, tr py, cp									

NEW IMPERIAL MINES LIMITED
 MINING DIVISION - WHITEHORSE
 YUKON TERRITORY

Hole No. Cp 70 Page No. 7

FOOTAGE		ROCK CLASSIFICATION <small>EPID. DIOP. GARN. SERP. QTZ/SIL. ACTINO TREMO. CHLO. CRYSTALLINE. SHEARING. VEINS. FRACTURING. FOLIATION. GRAIN SIZE. TEXTURE</small>	MINERALIZATION		ASSAY DATA							
From	To		TYPE	%	SAMPLE NO.	WIDTH	RECOV.	%CU	%FE	MOLY	AU/AG	INSOL
619.3	624	8a, xenolith, qtz porphyritic from 49?										
624	625.6	8B matrix 50% to py										
625.6	627	8c xenolith as above										
627	644	8a/8, acid diorite py to 635 tr cp mosz from 691	py	5								
			cp	2v								
			mosz	tr								
	644	Hole ends										
		Sample 627 - 632				5						
		632 - 637				5						
		637 - 644				7						

Whitehorse Copper Mines Ltd.
 MINING DIVISION - WHITEHORSE
 YUKON TERRITORY

Form No. 4

SAMPLE REPORT

Date _____ 19____

Page No. 1

CP 70

Sample No.	Cu	Fe	Moly	Au/Ag	Insol	Remarks
S 3 223	0.54					120.9 - 125
224	0.24					125 - 128
225	4R					153.5 - 155.2
226	0.16					170.5 - 175.5
227	0.04					175.5 - 180
228	4R					180 - 185
229	TR.					185 - 190
230	0.10					190 - 195
231	4R					195 - 200
232	0.21					200 - 205
233	0.37					205 - 210
234	0.09					210 - 215
235	0.04					215 - 220
236	0.18					220 - 225
237	0.02	TR	Revised 2 samples			225 - 230
238	0.35					230 - 233.5
S 3 239	0.35					233.5 - 235.2
S 3 240	0.23			Tr		316 - 322
S 3 241	0.37			Ag		322 - 329
S 3 2 43	0.24					575.2 - 581
44	0.02					500 - 505
45	0.44		✓	Au		627 - 632
46	0.37		✓	Au		632 - 637
47	0.20		✓	Au		637 - 644
48	0.38		0.18	Tr		329 - 334
49	0.28		✓			334 - 339
50	0.16		✓			339 - 344
51	0.25		✓			344 - 349
52	0.14		✓			349 - 354
53	4R		✓			354 - 359
54	4R		✓			357 - 364
55	4R		✓			364 - 369
56	0.14		✓			448 - 454.5
57	4R		0.02	Tr		557 - 562
58	0.04					517 - 525
59	0.25					
60	0.70					

NEW IMPERIAL MINES LIMITED
 MINING DIVISION - WHITEHORSE
 YUKON TERRITORY

Hole No. V 17 Page No. 2

FOOTAGE			ROCK CLASSIFICATION <small>EPID. DIOP. GARN. SERP. QTZ/SIL. ACTINO TREMO. CHLÓ. CRYSTALLINE. SHEARING. VEINS. FRACTURING. FOLIATION. GRAIN SIZE, TEXTURE</small>	MINERALIZATION		ASSAY DATA						
From	To			TYPE	%	SAMPLE NO.	WIDTH	RECOV.	%CU	%FE	MOLY	AU/AG
386	418	5 5b	Blk - dk gy graphitic limestone, patches and irreg streaks, cte bnding vague 60 - 70° fossil remnants? good coring									
418	505.5	9a b	pale grey dacite dyke loc porphyritic lst ct 60° lower ^{ct} broken good coring, to 3% py									
505.5	506.8	5b	as above gy - blk, cts irreg.									
506.8	583.9	9a b	grey dyke as above, xnocrysts to 1/4" toward lower ct, broken at contact, good coring, to 3% py									
583.9	671.8	5b	dk gy - blk graphitic limestone, num irreg fract fillings cte									
		△△	bx'd from 604 - 608									
		~	fault 609 - 610 calcite filled curved lines, shell remnants? 3" white cte from 637'									
671.8	847	5	white & grey limestone, bnding at 683' @ 60° minor 5b, good coring									

NEW IMPERIAL MINES LIMITED
 MINING DIVISION - WHITEHORSE
 YUKON TERRITORY

Hole No. V. 17 Page No. 3

FOOTAGE		ROCK CLASSIFICATION <small>EPID. DIOP. GARN. SERP. QTZ/SIL. ACTING TREMO. CHLO. CRYSTALLINE. SHEARING. VEINS. FRACTURING. FOLIATION. GRAIN SIZE. TEXTURE</small>	MINERALIZATION				ASSAY DATA					
From	To		TYPE	%	SAMPLE NO.	WIDTH	RECOV.	%CU	%FE	MOLY	AU/AG	INSOL.
847	876	5b/5 dk gy & white limestone, sects bxd, fragments of dark Ls in cte matrix, loc vague ^N bding 60°, good coring										
876	964	5b dk gy - blk limestone, patches & fracture fillings white cte 1" graphite @ 932' 917 - 922 core broken										
964	1101.8	5 white & grey limestone, gen massive - white to 101 ⁹ bding 30° @ 1013 Continued										
964	1101.8	5 loc good ^N bding 45° - 60° ~ healed fract's @ 1063 & 1071 serp'd, 20°										
1101.8	1103.2	3s L Pale grn skarn, vfg, mylonitized bding 45°										
1103.2	1145.5	4q grey quartzite, loc hvy py (to 5%) ≡ very broken 1121 to 1124 1136 to 1145.5										
1145.5	1349	4q grey fg - cg qte sections with fels grains to ^{1/2} 1/10", num irreg cte filled joints, good coring										
1349	1351.5	4q Lchd broken 1/2" carb filled shear @ 1349'										

NEW IMPERIAL MINES LIMITED
MINING DIVISION - WHITEHORSE
YUKON TERRITORY

Hole No. V 17 Page No. 4

FOOTAGE			ROCK CLASSIFICATION EPID. DIOP. GARN. SERP. QTZ/SIL. ACTING TREMO. CHLO. CRYSTALLINE. SHEARING. VEINS. FRACTURING. FOLIATION. GRAIN SIZE. TEXTURE	MINERALIZATION				ASSAY DATA					
From	To			TYPE	%	SAMPLE NO.	WIDTH	RECOV.	%CU	%FE	MOLY	AU/AG	INSOL
1351.5	1369	4q	grey quartzite hvly carbonated num cte filled fracts to 1/8" dia tr fg py										
		≡	gouge - rubble from 1368										
1369	1430.3	4q	grey, carbd on joints, core highly fractd to 1414'										
		≡	angular fels grains toward end										
1430.3	1432	4q	pale green breccia, fractd & healed qtz vein?										
			dissem fg py										
1432	1433	9b	dk gy fg basic dyke										
1433	1444	≡	4q rubble, fragments of qtz.										
1444	1497	4q	med gy qte good coring tr fg py, 6" rubble from 1484										
			4" cte from 1481										
1497	1513.5	4q	g, highly fractd loc leachd, num carb veinlets										
			serp and mud on slips										
1513.5	1535	4q	grey grn num cte veinlets, good coring										
1535	1536.2	≡	sand cave - rubble										

NEW IMPERIAL MINES LIMITED
 MINING DIVISION - WHITEHORSE
 YUKON TERRITORY

Hole No. V 17 Page No. 5

FOOTAGE			ROCK CLASSIFICATION <small>EPID. DIOP. GARN. SERP. QTZ/SIL. ACTINO TREMO. CHLO. CRYSTALLINE. SHEARING. VEINS. FRACTURING. FOLIATION. GRAIN SIZE. TEXTURE</small>	MINERALIZATION			ASSAY DATA					
From	To			TYPE	%	SAMPLE NO.	WIDTH	RECOY.	%CU	%FE	MOLY	AU/AG
1536.2	1554	4q	grey qte loc fels grains to 1/8" ^{cave} core at 1553'									
1554	1555	~	rubble (4q) hole caving									
1555	1735.2	4q	f feldspathic qte med gy, fels grains to 1/4", text loc dioritic, very good coring									
		~	1657' 5" rubble hvy py at lower ct									
1735.2	1735.5	9b	dk gy porphyritic basic dyke cts irreg @ 60°									
1735.5	1754	4q	pale gy grn qte, highly sheaved along core carb on joints									
1754	1785	4q	f gy grn feldspathic qte moderately fract'd to 5% py from 1783'									
1785	1805	9b	dk gy - blk porphyritic basic dyke, cts 30° & 45°									
1805	1821.5	4q	f/3 grey grn vague bnding, along core to 20° carb on joints									
1821.5	1824.5	9b	basic dyke, cts chilled 30° & 45°									
1824.5	1831	4q	/3d pale grn qte bnding 30°									

NEW IMPERIAL MINES LIMITED
 MINING DIVISION - WHITEHORSE
 YUKON TERRITORY

Hole No. V 17 Page No. 6

FOOTAGE			ROCK CLASSIFICATION EPID. DIOP. GARN. SERP. QTZ/SIL. ACTINO TREMO. CHLO. CRYSTALLINE. SHEARING. VEINS. FRACTURING. FOLIATION. GRAIN SIZE. TEXTURE	MINERALIZATION			ASSAY DATA					
From	To			TYPE	%	SAMPLE NO.	WIDTH	RECOV.	%CU	%FE	MOLY	AU/AG
		3H	at 1825.5 3/8" str hem with strks & blebs py and cpy at 30° sample 1825.5 - 1826	cpy	1/4%	3507	0.5	0.5				
		~	1829 - 1831 breccia & gouge									
1831	1865	4q	f grey feldspathic qte, coarse grained, good coring									
1865	1914.5	9a	b grey grn dacite? dyke, large xocrysts from 1869 to 1910 - to 3/8" dia, fine grained chilled at cts 45° 6" qtz & cte 1866.2 to 1866.8									
1914.5	2009	4q	f med gy mg - cg feldspathic qte num, irreg carb filled fracts, good coring broken 2000 - 2002 & 2007 - 2008									
2009	2012.5	9b	dk gy grn basic dyke, cts 45°?									
2012.5	2014	4q	f grey feldspathic qte									
2014	2015	9b	dk grn basic dyke, To be deepened									
2016	2016.3		Rubble	(A.Q. Core from here)								

NEW IMPERIAL MINES LIMITED
 MINING DIVISION - WHITEHORSE
 YUKON TERRITORY

Hole No. V 17 Page No. 7

FOOTAGE		ROCK CLASSIFICATION <small>EPID. DIOP. GARN. SERP. QTZ/SIL. ACTING TREMO. CHLO. CRYSTALLINE. SHEARING. VEINS. FRACTURING. FOLIATION. GRAIN SIZE. TEXTURE</small>	MINERALIZATION				ASSAY DATA					
From	To		TYPE	%	SAMPLE NO.	WIDTH	RECOV.	%CU	%FE	MOLY	AU/AG	INSOL
2016.3	2024.8	4f/3? felds rich sed, grains to 1/10" cte strg & veinlets, serpentized healed fract										
2024.8	2026.5	5/ 3 e, a, wh, grn skarnified Ls										
2026.5	2044	4f mg, gy, wh, blk feldspathic grit moderate jointing 9b 2041.8 - 2042.3 chilled basic dykelet, 60° & 45°										
2044	2045.3	5/ 3 e g a, wh skarnified Ls, minor hem										
2045.3	2056.8	4f as above wh, pale gy, grn diorite? stringer along core 1", from 2046' - 2047										
2056.8	2063.9	9b 1" chill ct at 25°, lower ct not chilled @ 30°										
2063.9	2084.6	4f med grained feldspathic grit, fg blebs epidote weakly skarnified - altd, good coring										
2084.6	2089.6	9b fg gy grn basic dyke chilled cts @ 20° & 80°, irreg.										

NEW IMPERIAL MINES LIMITED
MINING DIVISION - WHITEHORSE
YUKON TERRITORY

Hole No. V 17 Page No. 8

FOOTAGE			ROCK CLASSIFICATION EPID. DIOP. GARN. SERP. QTZ/SIL. ACTINO. TREMO. CHLO. CRYSTALLINE. SHEARING. VEINS. FRACTURING. FOLIATION. GRAIN SIZE. TEXTURE	MINERALIZATION			ASSAY DATA					
From	To			TYPE	%	SAMPLE NO.	WIDTH	RECOV.	%CU	%FE	MOLY	AU/AG
2084.6	2089.6	4f	as above, weak dioritic text? breccia frags angular - sub rounded, 1/2" dia sparse, fair coring									
2089.6	2117.9	4f q	gy grn med grained from 2111 broken altd.									
		9b	2114.6 - ^{2115.5} 2117.5 fg grn basic dyke cts @ 40° color and text similiar to seds									
2117.9	2186	9b	pale gy fg basic dyke, fair - moderate coring inclusions? felds seds 2137 - 2140, 2127-2128 , incls skarn (3 d ^{oe}) 2136' - 2137' with Hem broken core 2150 - 2156, 2½' lost 2168.5 - 2178 very broken, 9' lost 2187 - 2188 broken, chilled cts 35° & 25°									
2186	2224.4	4f g	feldspathic grit, fair coring, py on joints									
2224	2236	9b	dk gy blk fg, 1 - 2 m m wh xenocrysts, broken 10' lost core,									
2236	2284.5	4fg	broken gy grn, fair recovery, fg dissem py, minor epidote									

NEW IMPERIAL MINES LIMITED
 MINING DIVISION - WHITEHORSE
 YUKON TERRITORY

Hole No. V 17 Page No. 9

FOOTAGE			ROCK CLASSIFICATION <small>EPID. DIOP. GARN. SERP. QTZ/SIL. ACTINO TREMO. CHLO. CRYSTALLINE. SHEARING. VEINS. FRACTURING. FOLIATION. GRAIN SIZE, TEXTURE</small>	MINERALIZATION				ASSAY DATA				
From	To			TYPE	%	SAMPLE NO.	WIDTH	RECOV.	%CU	%FE	MOLY	AU/AG
		9b	2262.4 - 2263.7 cts @ 70°, broken from 2262									
2284.5	2286.9	4A	bx d ct at 40°									
2286.9	2304.4	4f	g felds sed as above									
2304.4	2328.5	9b	ct @ 40° (upper) fg, gy, grn, basic dyke, well jointed									
		4f	g incl altd seds 2312.4' - 2319.3' gy felds grit altd, cts broken 60°? 2320.4' chilled ct, 45°, wh cte strs thruout. 1/2" wh cte 25% py 30°									
2328.5	2338.2	4	q f med gy broken, num cte strs									
2338.2	2340.8	9b	lower ct 65°									
2340.8	2349.1	4f	g q heavily carbonated minor py 2343 - 2349 broken, 1' lost 2344 - 2346 broken & mud									
2349.1	2353.5	9b	well jointed									

NEW IMPERIAL MINES LIMITED
 MINING DIVISION - WHITEHORSE
 YUKON TERRITORY

Hole No. V 17 Page No. 10

FOOTAGE		ROCK CLASSIFICATION <small>EPID. DIOP. GARN. SERP. QTZ/SIL. ACTING TREMO. CHLO. CRYSTALLINE. SHEARING. VEINS. FRACTURING. FOLIATION. GRAIN SIZE. TEXTURE</small>	MINERALIZATION		ASSAY DATA							
From	To		TYPE	%	SAMPLE NO.	WIDTH	RECOV.	%CU	%FE	MOLY	AU/AG	INSOL
2353.5	2355.4	4f g altd hvy carbd										
2355.4	2356.3	9b fg grn basic dyke cts 30° - 50°										
2356.3	2358.8	4f g altd well jointed, hvy carb	py	2								
2358.8	2360.8	9b basic dyke, chilled cts 30°										
2360.8	2362	4f g altd, dk gy, carbd hvly										
2362	2363.2	9b basic dyke, chilled ct 40°										
2363.2	2363.9	4f g altd carbd as above										
2363.9	2364.5	9b basic dyke										
2364.5	2396.2	4f q/5? Hvly carb'd med gy well jointed - broken										
		9b 2385.8 - 2386.1 fg basic dyke 45°										
		2388 - 2390 shattered core										
		2386 - 2386.5 epidotized										
		2391 - 2391.5 broken										
		3s 2391.5 - 2392										
		2393 - 2397 broken										

NEW IMPERIAL MINES LIMITED
 MINING DIVISION - WHITEHORSE
 YUKON TERRITORY

Hole No. V 17 Page No. 11

FOOTAGE			ROCK CLASSIFICATION <small>EPID. DIOP. GARN. SERP. QTZ/SIL. ACTINO TREMO. CHLO. CRYSTALLINE. SHEARING. VEINS. FRACTURING. FOLIATION. GRAIN SIZE. TEXTURE</small>	MINERALIZATION			ASSAY DATA					
From	To			TYPE	%	SAMPLE NO.	WIDTH	RECOV.	%CU	%FE	MOLY	AU/AG
2396.2	2397.8	9b	fg grn micro \uparrow									
2397.8	2408.5	4q/f	well jointed gy grn possible dyke included									
2408.5	2411.5	9b	fg dk grn basic dyke, small blk xnocrysts									
2411.5	2449	4f	\nearrow 2433 - 2438 v broken 1' lost									
2449	2466	4f	/3 g d e, well developed garnet epidote skarn in feldspathic sed, good coring									
2466	2468.6	9b	lower ct 30° irreg									
2468.6	2479	4f/3	g e d wkly skarnified felds sed well developed garnet in patches esp along joints									
2479	2500	3g	d e /4f good coring gy grn brn, disseminated py, Tr cp disseminated 2479.5	py	1/2							
2500	2512	4q	f altd felds qte not strongly skarnified, jointed, cte veinlets									
		--	2500 - 2502 broken									

NEW IMPERIAL MINES LIMITED
MINING DIVISION - WHITEHORSE
YUKON TERRITORY

Hole No. V 17 Page No. 12

FOOTAGE			ROCK CLASSIFICATION EPID. DIOP. GARN. SERP. QTZ/SIL. ACTING TREMO. CHLO. CRYSTALLINE. SHEARING. VEINS. FRACTURING. FOLIATION. GRAIN SIZE. TEXTURE	MINERALIZATION				ASSAY DATA				
From	To			TYPE	%	SAMPLE NO.	WIDTH	RECOV.	%CU	%FE	MOLY	AU/AG
2512	2522.9	3g	brn massive garnet skarn minor e, a, leach & broken in patches 2517 - 2524, 2' lost									
2522.5	2528.5	5	white gy ls minor, ^S l, g, a, vuggy with cte xtals. 3% dissem py									
2528.5	2530.6	3a	d g e/5 pale grn, vuggy dissem py, fg									
2530.6	2536.4	4g	f hvly carbd, 2% py, fair coring altd									
2536.4	2538.2	9b	v fg grn basic dyke, chilled cts @ 45°									
2538.2	2543	3a	dk gy hvly carbd, after 4? py	py	2							
2543	2554.8	9b	fg micro ^u basic dyke hvly carbd ct 45° (lower) inclusion, 2544.4 - 2446 inclusion carbd gy seds vuggy 1st ct 1/2" epidotized slip 2549 - 50 broken core									
2554.8	2579	3a	f/4 hvly carbd, after limestone? felds xenocrysts relics of sediments, good coring 2" qtz vein @ 2 568'									
				Hole at 3238' 28 feb in sharpened feldspathic sediments locally dioritic texture Hole will be continued into diorite if possible								

E. Caron Diamond Drilling Limited

CONTRACT DIAMOND DRILLING

VANCOUVER OFFICE:
3-425 HOWE STREET
VANCOUVER, B.C.
PHONE 687-4634

HEAD OFFICE:
7 ROUND ROAD
WHITEHORSE, Y.T.
PHONE 658-2424 - 658-2425

TEL. 035-8-357

November 2, 1973,

Whitehorse Copper Mines Limited,
Box 4280,
Whitehorse, Yukon Territory.

Summary of drilling and drilling costs for September and October 1973:

Drilling (3550 ft. BQ)		\$23,411.90
Company time (299 hrs.)		\$ 2,167.75
Equipment rental (4 hrs.)		\$ 25.40
Casing per ft. (151 ft. BW) (4 ft. NW)		\$ 1,252.15
Tractor D-8 (16 hrs.)		\$ 415.00
Canamet Sales Ltd. (Invoice # 2280)		\$ 495.80
Canadian Propane Gas & Oil Ltd. (Invoice # 290711)		\$ 72.00
	7.7 (" # 291062)	\$ 92.75
	(" # 291118)	\$ 38.25
	(" # 291151)	\$ 24.00
	(" # 291208)	\$ 63.75
Acc + 6-16 11259.85		
D 6-17 12904.70		
1 cub 6-37 3905.20		
	7.5	\$28,069.75

(Footage on hole #LC-114 45° charged at \$6.40 per ft. not at \$6.90 as per contract. Tractor D-8 charged at D-6 rate.)

3 C 7.72 / 5 +
P 7.83 / 5 +
2 8.82 / 5 +

G...
P...
9 NOV

NOV 4 1973

E. Caron Diamond Drilling Limited

HEAD OFFICE:
7 ROUND EL ROAD
WHITEHORSE, Y.T.
PHONE 658-2424 - 668-2425

CONTRACT DIAMOND DRILLING

VANCOUVER OFFICE:
3-425 HOWE STREET
VANCOUVER, B.C.
PHONE 687-4634

November 2, 1973,

Whitehorse Copper Mines Limited:

Footage:

Hole #LC-114 45°

0 ft. to 500 ft. = 500 ft. @ \$6.40 per ft. \$ 3,200.00

500 ft. to 814 ft. = 314 ft. @ \$7.50 per ft. \$ 2,355.00

Hole #LC-115 50°

0 ft. to 500 ft. = 500 ft. @ \$6.40 per ft. \$ 3,200.00

500 ft. to 645 ft. = 145 ft. @ \$7.50 per ft. \$ 1,087.50

Hole #CP-68 75°

0 ft. to 500 ft. = 500 ft. @ \$6.40 per ft. \$ 3,200.00

500 ft. to 527 ft. = 27 ft. @ \$7.50 per ft. \$ 202.50

Hole #CP-69 64°

0 ft. to 478 ft. = 478 ft. @ \$6.40 per ft. \$ 3,059.20

Hole #CP-70 61°

0 ft. to 500 ft. = 500 ft. @ \$6.40 per ft. \$ 3,200.00

500 ft. to 643 ft. = 143 ft. @ \$7.50 per ft. \$ 1,072.50

Hole #BLC-44 58°

0 ft. to 443 ft. = 443 ft. @ \$6.40 per ft. \$ 2,835.20

443

\$23,411.90

Handwritten notes and brackets on the right side of the page, including a large bracket grouping the first four holes and another bracket grouping the last two holes. There are also some numbers written in the margins, such as 7.7, 52, 178, 243, 69, 7.83, and 8.8.

ANNEX E - 3

Invoice Nov. 2, 73

Little - Big Chief

Drilling	\$ 6,400.00	
	3,442.50	\$ 9,842.50
Company Time	90 x 7.25	652.50
Mach Rental	4 x 6.35	25.40
Casing	13 x 8.90)	
	39 x 7.85)	
	4 x 8.70)	456.65
Tractor	3 x 26.00	78.00
Core Boxes		205.30
		<u>TOTAL \$ 11,260.35</u>

Cowley Park

Drilling	\$ 9,459.20	
	1,275.00	\$ 10,734.20
Company Time	141 x 7.29	1,022.25
Casing	52 x 7.85)	
	7 x 8.90)	470.50
Tractor	9 x 26.00	234.00
Core Boxes		231.00
Propane		212.25
		<u>TOTAL \$ 12,904.20</u>

Black Cub South

Drilling		\$ 2,835.20
Company Time	68 x 7.25	493.00
Casing		335.00
Tractor	4 x 26.00	104.00
Core Boxes		59.50
Propane		78.50
		<u>TOTAL \$ 3,905.20</u>

TOTAL INVOICES \$ 28,069.75

CONTRACT DIAMOND DRILLING

HEAD OFFICE:
7 ROUNDEL ROAD
WHITEHORSE, Y.T. Y1A 3H3
PHONE 668-2424 - 668-2425
Telex 036-8-337

VANCOUVER OFFICE:
3-425 HOWE STREET
VANCOUVER, B.C.
PHONE 687-4634

December 6, 1973,

Whitehorse Copper Mines Limited,
Box 4280,
Whitehorse, Yukon Territory.

Summary of drilling and drilling costs for November 1973:

Drilling (BQ-1333 ft.) (NQ-455 ft.)	\$13,421.20
Company time (330 hrs.)	\$ 2,392.50
Equipment rental (47 hrs.)	\$ 298.45
Casing per ft. (NW-90 ft.) (HW-46 ft.)	\$ 1,300.00
Tractor D-6 (15 hrs.)	\$ 390.00
Canamet Sales Ltd. (Invoice # 2306)	\$ 360.00
NQ Core Boxes (25 boxes @ \$4.05 per box)	\$ 101.25
Canadian Propane Gas & Oil Ltd. (Invoice # 291249)	\$ 39.75
(" # 291289)	\$ 76.50
(" # 291335)	\$ 17.40
(" # 291364)	\$ 79.50
(" # 291393)	\$ 93.30
(" # 291450)	\$ 106.00
(" # 291463)	\$ 88.20
(" # 291503)	\$ 76.50
(" # 291542)	\$ 8.70
(" # 291559)	\$ 78.00
(" # 291603)	\$ 76.50
McCrae Inn Ltd. (Invoice # 32267-propane)	\$ 26.80

167.15

\$19,030.55

Value
\$11,898.76
cost #
\$7131.17
cost # 6-37

Value \$12,352.42
BU Cub 6678.13

Taney
Dec 12th 73
Geology

est 13000 + 0
32
28
total 6,600 + 26
Dec 17

E. Caren Diamond Drilling Limited

HEAD OFFICE:
7 ROUND EL ROAD
WHITEHORSE, Y.T.
NE 663-2424 - 668-2425

CONTRACT DIAMOND DRILLING

VANCOUVER OFFICE:
3 - 425 HOWE STREET
VANCOUVER, B.C.
PHONE 687-4634

December 5, 1973,

Whitehorse Copper Mines Limited:

Footage:

Hole #BLC-44 58°

BQ	443 ft.	to	500 ft. =	57 ft. @ \$6.40 per ft.	\$ 364.80
BQ	500 ft.	to	807 ft. =	307 ft. @ \$7.50 per ft.	\$2,302.50

3539

Hole #BLC-45 62°

NQ	0 ft.	to	59 ft. =	59 ft. @ \$7.30 per ft.	\$ 430.70
BQ	59 ft.	to	128 ft. =	69 ft. @ \$6.40 per ft.	\$ 441.60

Hole #V-17 80°

NQ	0 ft.	to	396 ft. =	396 ft. @ \$7.30 per ft.	\$2,890.80
BQ	396 ft.	to	500 ft. =	104 ft. @ \$6.40 per ft.	\$ 665.60
BQ	500 ft.	to	1000 ft. =	500 ft. @ \$7.50 per ft.	\$3,750.00
BQ	1000 ft.	to	1296 ft. =	296 ft. @ \$8.70 per ft.	\$2,575.20

9881

\$13,421.20

Valevic

ANNEX E - 6

SUMMARY OF DRILLING COSTS

BLC 44 & BLC 45

From Invoice Nov. 2, 73

Drilling		\$ 2,835.20
Company Time 68 x \$7.25		493.00
Casing		335.00
Tractor 4 x 26.00		104.00
Core Boxes		59.50
Propane		78.50
	TOTAL	\$ <u>3,905.20</u>

From Invoice Dec. 6, 73

Drilling		\$ 3,539.60
Company Time 190 x \$7.25		1,377.50
Casing		934.00
Tractor 6 x 26.00		156.00
Core Boxes 433/1333 x 360.00		115.20
Propane 27/66 x 767.15		314.53
Mach Rental		241.30
	TOTAL	\$ <u>6,678.13</u>

Total for BLC 44 & 45 \$ 10,583.33

Total Core Boxes \$ 174.70

Total Drilling \$ 10,408.63

E. Caron Diamond Drilling Limited

HEAD OFFICE:
7 ROUNDEL ROAD
WHITEHORSE, Y.T.
PHONE 668-2424 - 668-2425

CONTRACT DIAMOND DRILLING

VANCOUVER OFFICE:
3 - 425 HOWE STREET
VANCOUVER, B.C.
PHONE 687-4634

January 3, 1974,

Whitehorse Copper Mines Limited,
Box 4280,
Whitehorse, Y.T.

Summary of drilling and drilling costs for December 1973:

Drilling (719 ft 59)	\$6,884.30 ✓
Company time (349 hrs)	\$2,602.75 ✓✓
Equipment rental (141 hrs)	\$ 875.35 ✓
Mud	\$ 819.35 ✓
Propane	\$ 270.10 ✓
Fuel	\$ 40.47 ✓
D 6 (2 hrs)	\$ 52.00 ✓
 Total	 \$11,564.32 ✓

Ander

original to Lyons
for payment on Jan 9th
please check figures.
We can claim a refund
if we have been
overcharged
Dave

D Tenney
Jan 9th 74.

Geology Acct. # 6-38
TOTAL VAL invoice 6 Dec
11,564.32
11,564.32

E. Caron Diamond Drilling Limited

HEAD OFFICE:
7 ROUND EL ROAD
WHITEHORSE, Y.T.
PHONE 668-2424 - 668-2425

CONTRACT DIAMOND DRILLING

VANCOUVER OFFICE:
3-425 HOWE STREET
VANCOUVER, B.C.
PHONE 687-4634

January 4, 1974

Whitehorse Copper Mines Limited;

Footage:

Hole # V-17 80°

1296 ft	to	1500 ft	204 @	\$ 8.70	per ft.	\$1,774.80
1500 ft	to	2000 ft.	500 @	\$ 9.80	per ft	\$4,900.00
2000 ft	to	2015 ft	15 @	\$11.30	per ft	\$ 169.50

719

no price in contract -
this is reasonable.

D.I.

\$6,844.30

E. Caron Diamond Drilling Limited

HEAD OFFICE:
7 RONDEL ROAD
WHITEHORSE, Y.T.
PHONE 668-2424 - 668-2425

CONTRACT DIAMOND DRILLING

VANCOUVER OFFICE:
3-425 HOWE STREET
VANCOUVER, B.C.
PHONE 687-4634

January 4, 1974

Date	QUIK GEL	QUIK THROL	TANNEX	FUEL
Dec. 7	5 ✓ 4 ✓	1 ✓ 2 ✓		
" 8	4 ✓ 5 ✓	2 ✓ 2 ✓		
" 9	5 ✓ 4 ✓	2 ✓ 2 ✓	1/2 ✓	20 ✓ 10 ✓
" 10	4 ✓ 4 ✓	1 ✓		5 ✓
" 11	5 ✓ 5 ✓	4 ✓	1/2 ✓	
" 12	5 ✓ 4 ✓	4 ✓ 1 ✓		5 gals ✓
" 13	5 ✓ 7 ✓	3 ✓ 5 ✓	1/2 ✓	5 " ✓
" 14	5 ✓ 4 ✓	4 ✓		10 ✓
" 15	5 3 ✓ 4 ✓	2 ✓	1/2 ✓	2 ✓
" 16	3 ✓	3 ✓	1/2 ✓	
"	3 ✓	1 ✓	1/2 ✓	
	<u>88</u> ✓	<u>39</u> ✓	<u>3</u> ✓	<u>57</u> ✓

E. Caron Diamond Drilling Limited

HEAD OFFICE:
7 ROUNDEL ROAD
WHITEHORSE, Y.T. Y1A-3H3
PHONE 668-2424 - 668-2425
TELEX 036-8-337

CONTRACT DIAMOND DRILLING

VANCOUVER OFFICE:
3-425 HOWE STREET
VANCOUVER, B.C. V6C-2A9
PHONE 687-4634

March 1, 1974,

Whitehorse Copper Mines Limited,
Box 4280,
Whitehorse, Yukon Territory

Summary of drilling and drilling costs for February 1974:

Drilling (1233 ft. AQ)	\$14,613.75
Company time (304 hrs.)	\$ 2,204.00
Equipment rental (81 hrs.)	\$ 514.35
Diamond Costs (2--AW Casing Shoes)	\$ 190.44
(1--AQ W/L Bit)	\$ 127.25
Thiessen Equipment Ltd. (Invoice # 13808)	\$ 169.80
Core Boxes (60 AQ boxes @ \$3.60 per box)	\$ 216.00
Canadian Propane Gas & Oil Ltd. (Invoice # 233294)	\$ 93.70
(" # 292348)	\$ 92.75
(" # 292372)	\$ 93.30
(" # 292394)	\$ 79.50
(" # 530054)	\$ 79.50

\$18,474.34

Invoice 106

E. Caron Diamond Drilling Limited

CONTRACT DIAMOND DRILLING

HEAD OFFICE:
7 ROUNDEL ROAD
TEHORSE, Y.T. Y1A-3H3
JNE 668-2424 - 668-2425
TELEX 036-8-337

VANCOUVER OFFICE:
3-425 HOWE STREET
VANCOUVER, B.C. V6C-2A9
PHONE 687-4634

March 1, 1974,

Whitehorse Copper Mines Limited:

Footage:

Hole #V-17 80°

2015 ft. to 2500 ft. = 485 ft. @ \$10.55 per ft.	\$ 5,116.75
2500 ft. to 3000 ft. = 500 ft. @ \$12.05 per ft.	\$ 6,025.00
3000 ft. to 3248 ft. = 248 ft. @ \$14.00 per ft.	\$ 3,472.00

\$14,613.75

ANNEX E - 11

SUMMARY OF DRILLING VALERIE

From Invoice Dec. 6, 73	12,352.42
	\$ 11,898.76
From Invoice Jan. 3, 74	\$ 11,564.32
From Invoice Feb. 28, 74	\$ <u>18,474.34</u>
TOTAL	\$ 42,391.08

INVOICE



November 8 19 73

Whitehorse Copper Mines Ltd.,
P.O. Box 4280,
WHITEHORSE, Yukon Territory.

Attention: Mr. D. Tenney

MAKE CHEQUES PAYABLE TO:
KENTING EXPLORATION SERVICES LIMITED
524 - 11TH AVENUE S.W.
CALGARY, ALBERTA, CANADA
T2R 0C8

INVOICE NO. 577
MONTH OF CHARGE October 1973

WE HAVE TODAY DEBITED YOUR ACCOUNT AS FOLLOWS

I.P. Survey - Whitehorse Area, Yukon
Letter Agreement June 4, 1973

To Supplying Personnel and Equipment
As set out in captioned Letter Agreement

1. Mobilization/Demobilization
(Includes Travel Days October 2 and 30)

\$ 800 00

2. Working Days (as defined)
October 3-29 inc. 27 days
Less Time Off Oct. 14 1 day
26 days @ \$245.00/day

6,370 00

3. Third Party Charges
T.R.B. Dundas Expense Report - attached
Administration @ 15%

278 90
41 83

320 73

TOTAL THIS INVOICE

\$7,490 73

pay 75% now

*0.5 cost cannot be
1/26 claimed From N.M.I.
exp. assistance, work done
on our own terms & we
2005 11-20-73*

*Rec'd
Nov 13 1973*

*5762.10**

2005 11-20-73 * portion of survey claimed
Under Northern Mineral Exploration
Assistance

ANNEX F - 2

STATEMENT OF WAGES PAID I.P. CREW

OCT. 3 - OCT. 29, 73

Tom Young			\$	412.50
				300.00
Art Yeomans			\$	412.50
				562.50
Reg Therrien			\$	412.50
				562.50
Tom Banks			\$	262.50
	(26 Days)	TOTAL	\$	<u>2,925.00</u>
20 of 26 days of survey on claims WE 19 - 34			\$	2,250.00
Allow 17% fringe benefits hourly rated employees. (U.I.C., C.P.P., Group Life, Holiday Pay, Extended Medical Benefits)			\$	382.50
		TOTAL	\$	<u>2,632.50</u>

Lynn Sellmer
Lynn Sellmer, Accountant



THE ONLY CANADIAN NAME IN WORLD-WIDE CAR RENTALS

OWNER-LOCATEUR
Tilden Rent-A-Car Service
2009 Second Avenue
Whitehorse, Yukon
Phone 403-667-2525

20 CUSTOMER - LOCATAIRE

WHITEHORSE COPPER
Box 4280
WHITEHORSE, YUKON
D. TENNEY

D. Tenney
Acct. # 6-39

2 VEHICLE NO. VÉHICULE		3 LIC. NO.		4 MAKE - MARQUE		5 STYLE		25 IN RETOUR DATE & HEURE	
		ND40		CHEV		C/A		OCT 30/13	
6 OWNER STAT. PROPRIÉTAIRE		7 TO BE CHECKED IN AT - ARRIVERA À		8 RETURN DATE - DATE DE RETOUR		9 CREDIT CARD - CARTE DE CREDIT NO.		26 OUT DEPART DATE & HEURE	
WASE		WASE		3 WEEKS		-		OCT 2/13 10 PM	
11 DRIVER'S LIC. NO. CONDUCTEUR		12 PROV.		13 EXP.		10 DESTINATION		27 MILES IN MILES RETOUR	
007215		YT		76		LOCAL.		20098	
43 ALTERNATE CAR AUTRE VOITURE		MILES IN MILES RETOUR		31 IN BY RETOUR PAR		28 MILES OUT MILES DÉPART		29 MILES MILES @ 17¢ 126/18	
14 REMARKS - REMARQUES		MILES OUT MILES DÉPART		22 OUT BY DÉPART PAR		30		31 HRS. HEURES	
GASOLINE EXTRA. This unit equipped with extra spare tire. Card I I				①				32 DAYS JOURS @ 17.00	
JACKALL								33 WKS. SEM. 4 @ 102.00 408.00	
		MILES DRIVEN MILES CONDUITS		23 TRAVEL AGENT DE VOYAGE		34 TOTAL TIME & MILEAGE TOTAL TEMPS & MILLAGE		534/18	
				☐		35 TPA		534/4	
				24 INTERCITY FEE TAUX INTERCITÉ		36 SUB-TOTAL SOUS-TOTAL		481.04	
						TO X			
15 COLLISION DAMAGE WAIVER - EXONÉRATION POUR DOMMAGES PAR COLLISION		37 SUB-TOTAL SOUS-TOTAL		39 TAX TAXE		33 COLLISION DAMAGE WAIVER EXONÉRATION POUR DOMMAGES PAR COLLISION		56.00	
IN CONSIDERATION OF THE PAYMENT OF EN CONSIDÉRATION DU PAIEMENT DE 2.00 PER DAY PAR JOUR						40 OTHER AUTRE (Diesel Gas)		7.65	
CUSTOMER'S LIABILITY FOR DAMAGE TO RENTED VEHICLE INCLUDING WINDSHIELD IS LIMITED TO: (PARE-BRIS INCLUS) 100.00						43 TOTAL CHARGES COÛT TOTAL		544.69	
PROVIDED ALL TERMS OF THE RENTAL AGREEMENT ARE COMPLIED WITH POURVU QUE TOUTES LES CONDITIONS DU PRÉSENT CONTRAT SOIENT REMPLIES (CUSTOMER'S SIGNATURE) (SIGNATURE DU LOCATAIRE) DT.				41 RECEIPTS RECUS		44 LESS CREDITS À CRÉDITER			
(* P.S.T. APPLICABLE ON THIS AMOUNT IN THE PROVINCE OF QUEBEC ONLY T.V.P. IMPOSABLE SUR CE MONTANT AU QUÉBEC SEULEMENT)						45 BALANCE DUE SÔLDE DÛ		544.69	
16 I, THE UNDERSIGNED HAVE READ AND RECEIVED A COPY OF ABOVE AND REVERSE SIDE OF THIS CONTRACT - JE, SOUSSIGNÉ, AI LU ET REÇU UNE COPIE RECTO ET VERSO DU PRÉSENT CONTRAT.						CASH COMPTANT ☐			
SIGNATURE OF RENTER OR EMPLOYEE OF RENTER SIGNATURE DU LOCATAIRE OU EMPLOYÉ DU LOCATAIRE X D. Tenney						CHARGE À FACTURER ☑			
17 HOME ADDRESS ADRESSE DOMICILE						46 RECEIVED REFUND (TO BE INITIALED BY RENTER) REMBOURSEMENT REÇU (À ÊTRE INITIÉ PAR LE LOCATAIRE)			
CITY VILLE									
18 LOCAL ADDRESS ADRESSE LOCALE									

CUSTOMER IS LIABLE FOR ALL PARKING AND TRAFFIC VIOLATIONS

LOCATAIRE RESPONSABLE POUR TOUTES CONTRAVENTIONS DE STATIONNEMENT OU DE CIRCULATION.

DÉTACH HERE

ORIGINAL INVOICE - FACTUR

DETACH AND RETURN THIS PORTION WITH YOUR REMITTANCE TO:
DÉTACHER ET RETOURNER CE COUPON AVEC VOTRE REMISE À:

INVOICE

TILDEN FEATURES CHEV AND OTHER

NET DUE