

APPLICATION FOR NORTHERN MINERAL
ASSISTANCE GRANT

PLATA MINERAL CLAIM GROUP

Mayo Mining District
Yukon Territory

Period: January 1st, ¹⁹⁷³1974 to
December 31st, 1974
₁₉₇₃

Latitude : 63°35'N.

Longitude: 132°05'W.

N.T.S. 105-N-9

061153

By:

W. J. ROBERTS

DYNASTY EXPLORATIONS LIMITED

April 30, 1974

NMEAP
Received
Sept 12, 1974.

TABLE OF CONTENTS

List of Claims

Introduction	1
Location and Access	1
Topography	3
Regional Geology	4
Geochemical Soil Sampling Survey	6
Physical Work	7
Economic Geology	8
Conclusions and Recommendations	15
Proposed 1974 Exploration Program	16
Proposed Plata Budget for 1974	18

Illustrations

Claim Map	Pocket
Compilation Map	Pocket

CLAIM SUMMARY

COMPANY ... DYNASTY ... CLAIM ... PLATA ... AREA ... HESS ... LOCATION ... N.T.S. ... 105-N-9

Claim No.	Grant No.	No. of Claims	Staked by	Recording Date	Transfer Information		Due Date	Assessment Work and Remarks
					To	Date		
1-8	Y68588-Y68595	8	T. Skonseng	Sept. 8/72	Dynasty	Dec. 14/72	Dec. 5/78	* All northern mineral grant. Assess. Work: Date: June 1, 1973 Amount: \$147,623.96 Type: Geol. Geochem. Geophys. Hand Trenching Diamond Drilling
9-16	Y68596-Y68603	8	R. Etzel	Sept. 8/72	"	"	Dec. 5/78	
17	Y68604	1	S. Rousseau	Sept. 8/72	"	"	Dec. 5/77	
18	Y68605	1	S. Rousseau	Sept. 8/72	"	"	Dec. 5/78	
19	Y68606	1	S. Rousseau	Sept. 8/72	"	"	Dec. 5/77	
20	Y68607	1	S. Rousseau	Sept. 8/72	"	"	Dec. 5/78	
21	Y68608	1	S. Rousseau	Sept. 8/72	"	"	Dec. 5/77	
22	Y68609	1	S. Rousseau	Sept. 8/72	"	"	Dec. 5/78	
23	Y68610	1	S. Rousseau	Sept. 8/72	"	"	Dec. 5/77	
24	Y68611	1	S. Rousseau	Sept. 8/72	"	"	Dec. 5/78	
25	Y68580	1	W. Waugh	Sept. 5/72	"	"	Dec. 5/77	
26	Y68581	1	W. Waugh	Sept. 5/72	"	"	Dec. 5/78	
27	Y68582	1	W. Waugh	Sept. 5/72	"	"	Dec. 5/77	
28-32	Y68583-Y68587	5	W. Waugh	Sept. 5/72	"	"	Dec. 5/78	
33-40	Y68629-Y68636	8	P. Lane	Sept. 29/72	"	"	Dec. 5/77	
41-48	Y68645-Y68644	8	D. Zutter	Sept. 29/72	"	"	Dec. 5/77	
49-56	Y68645-Y68652	8	R. Bouchard	Sept. 29/72	"	"	Dec. 5/77	
57-64	Y68653-Y68660	8	T. Brassard	Sept. 29/72	"	"	Dec. 5/77	
65-72	Y68661-Y68668	8	T. Carlick	Sept. 29/72	"	"	Dec. 5/77	
73-80	Y68669-Y68676	8	R. Laramee	Sept. 29/72	"	"	Dec. 5/77	
81-88	Y68677-Y68684	8	L.P. Laramee	Sept. 29/72	"	"	Dec. 5/77	
89-96	Y68685-Y68692	8	G. Grondin	Sept. 29/72	"	"	Dec. 5/77	
97-104	Y69693-Y68700	8	G. Desautels	Sept. 29/72	"	"	Dec. 5/78	
105-112	Y68701-Y68708	8	R. Morin	Sept. 29/72	"	"	Dec. 5/78	
113	Y68773	1	R. Voisine	Oct. 4/72	Dynasty	Dec. 14/72	Dec. 5/77	
114	Y68774	1	R. Voisine	Oct. 4/72	"	"	Dec. 5/78	
115-120	Y68775-Y68780	6	R. Voisine	Oct. 4/72	"	"	Dec. 5/77	
121-128	Y68709-Y68716	8	J. F. Welter	Sept. 29/72	"	"	Dec. 5/77	
129-136	Y68717-Y68724	8	C. J. McInnes	Sept. 29/72	"	"	Dec. 5/77	
137-144	Y68725-Y68732	8	M. Barker	Sept. 29/72	"	"	Dec. 5/77	
145-148	Y68733-Y68736	4	Peter Dean	Sept. 29/72	"	"	Dec. 5/78	
149-152	Y68737-Y68740	4	Peter Dean	Sept. 29/72	"	"	Dec. 5/77	
153-160	Y68741-Y68748	8	S. Fiset	Sept. 29/72	"	"	Dec. 5/77	
161-168	Y68765-Y68772	8	Mike Brown	Oct. 2/72	"	"	Dec. 5/77	
169-176	Y68781-Y68788	8	E. Fleury	Oct. 4/72	"	"	Dec. 5/78	
177-184	Y68749-Y68756	8	George Ball	Sept. 29/72	"	"	Dec. 5/77	
185-192	Y68757-Y68764	8	A. Larin	Sept. 29/72	"	"	Dec. 5/77	
193-200	Y68831-Y68838	8	Henry Dzik	Oct. 13/72	"	"	Dec. 5/75	
201-208	Y68839-Y68846	8	John Rolls	Oct. 13/72	"	"	Dec. 5/75	
209-216	Y68847-Y68854	8	John O'Neill	Oct. 13/72	"	"	Dec. 5/75	
217-224	Y68855-Y68862	8	Wayne Roberts	Oct. 13/72	"	"	Dec. 5/75	
225-232	Y68863-Y68870	8	Bernice Roberts	Oct. 13/72	"	"	Dec. 5/75	
241-246	Y68871-Y68876	6	M. J. Wood	Oct. 13/72	"	"	Dec. 5/77	
247-248	Y68877-Y68878	2	M. J. Wood	Oct. 13/72	"	"	Dec. 5/78	
249-256	Y68879-Y68886	8	B. Carson	Oct. 13/72	"	"	Dec. 5/78	
257-258	Y68887-Y68888	2	Ray Fysh	Oct. 13/72	"	"	Dec. 5/78	
267-272	Y68897-Y68902	6	Jack Rolla	Oct. 13/72	"	"	Dec. 5/77	
273-280	Y68903-Y68910	8	Gordon Davis	Oct. 13/72	"	"	Dec. 5/77	
281-288	Y85186-Y85193	8	Fred Daley	Sept. 5/73	"	"	Sept. 5/74	

COMPANY ... DYNASTY ... CLAIM ... INCA ... AREA ... Rogue River ... LOCATION ... N.T.S. ... 105-O-12

Claim No.	Grant No.	No. of Claims	Staked by	Recording Date	Transfer Information		Due Date	Assessment Work and Remarks
					To	Date		
1-8	Y68955-Y68962	8	W. Thompson	Oct. 13/72	Dynasty	Mar. 2/73	Dec. 5/77	Assess. work filed as shown on Plata Claims on June 1st, 1973.
9-16	Y68963-Y68970	8	S. McLeod	Oct. 13/72	"	"	Dec. 5/77	
17-24	Y68971-Y68978	8	J. Brock	Oct. 13/72	"	"	Dec. 5/77	
25-32	Y68979-Y68986	8	R. J. Cathro	Oct. 13/72	"	"	Dec/ 5/77	

DYNASTY EXPLORATIONS LIMITED

330 MARINE BUILDING
355 BURRARD STREET
VANCOUVER 1, B. C.

APPLICATION FOR NORTHERN MINERAL ASSISTANCE GRANT PLATA MINERAL CLAIM GROUP

INTRODUCTION

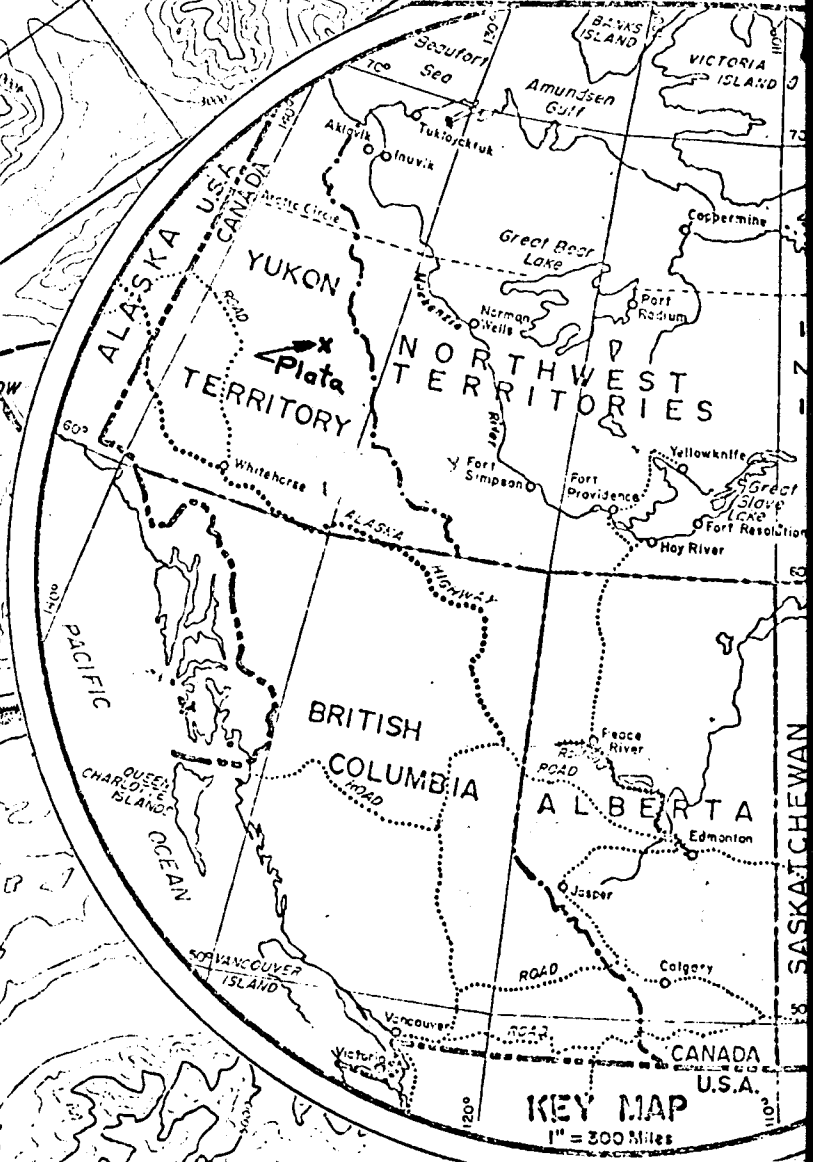
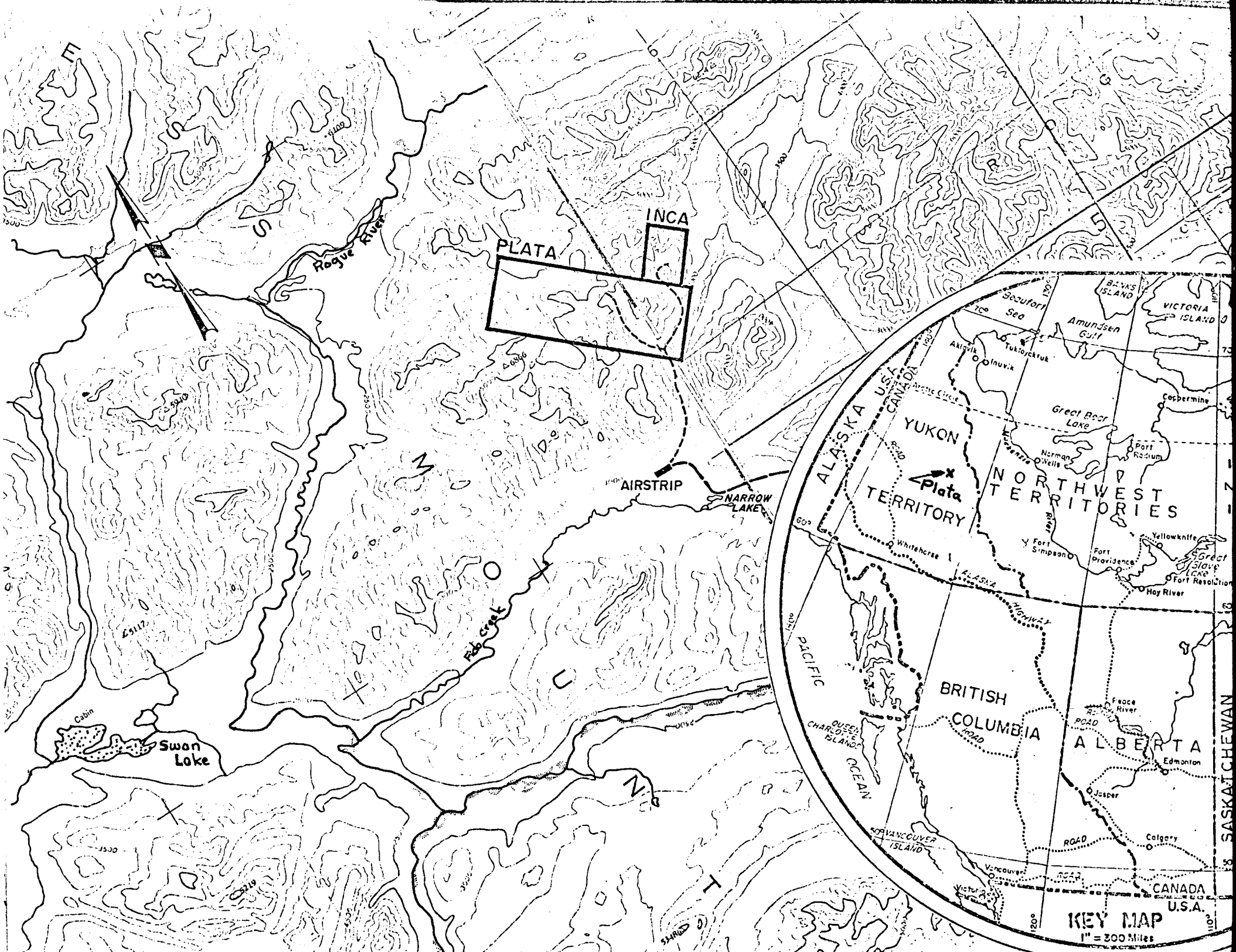
The Plata mineral claims, staked in 1972 to cover high grade silver, lead and zinc vein-type mineralization, have received detailed evaluation during the past two exploration seasons. During the 1972 field season preliminary work included geological mapping, soil sampling, geophysical test surveys, aerial photography, hand trenching and diamond drilling.

Work in 1973 stressed detailed structural geologic mapping and evaluation of all accessible veins and showings by trenching and sampling methods. A total of 30 zones and showings were examined in detail within the central portion of the Plata claims. Grid establishment and soil sampling has also indicated mineralization extending northwest of the present area of detailed evaluation.

Work on the Inca claims, also included in the Plata Group, involved preliminary grid establishment and soil sampling over a vein of massive galena.

LOCATION AND ACCESS

The Plata Group is located in the Bostock Range of Hess Mountains, between the Rogue and Hess Rivers in northeast Yukon. The "main showing or No. 4 Zone" and base camp are located on Greg Creek, a tributary of Fido Creek at latitude $63^{\circ}40'N$, longitude $132^{\circ}02'W$.



This locality lies 50 miles from the Northwest Territories border, 115 miles due east of Mayo, 108 miles N-NE of Faro, 110 miles north and slightly east of Ross River, and 65 air miles northwest of the North Canal Road.

Present access to the base camp is by a combination of fixed-wing wheeled aircraft to the Plata airstrip on Fido Creek, elevation 2800 ft., length 2200 ft., then by helicopter 6 miles due north to the campsite at an elevation of 3700 ft. The tote road between the airstrip and campsite is unusable during the summer months due to its swampy location.

TOPOGRAPHY

The Bostock Range, 28 miles long and 6 to 12 miles wide, rises from 2500 foot elevations on Rogue River and 3000 feet on Fido Creek to numerous ridges above timber-line (4000-5000 ft.); the highest and central peak being Mt. Aho, elevation 6866 ft. Tree-line is approximately at 4500 ft. above which is largely outcrop and talus. Slopes below 4500 ft. are generally drift covered. All hillsides sustain a stunted growth of black spruce, dwarf birch and mountain alder. Climate is typical of northeast Yukon with average precipitation.

REGIONAL GEOLOGY

The Hess Mountains, located in the northern portion of the Selwyn basin, northeast of the Proterozoic Arch, consist largely of a thick pile of Devonian-Mississippian carbonaceous clastic eugeosynclinal-type sedimentary rocks unconformably overlying the Proterozoic grit units. Structurally this area appears to have had a history of northeast-southwest compression, producing northwest trending major lithologic fabrics, major fold axes and thrust faults. Major faults are oriented in a northwest-southeast direction paralleling the Tintina Trench and regional strike; a northeast-southwest orientation, orthogonal to the last set paralleled by a strong joint set and off-setting unit contacts; and a roughly east-west set outlining the thrusting from the south.

Small granitic to granodiorite stocks, occurring along the northeastern portion of the Selwyn Basin, are part of the general intrusive arc of the Mackenzie Mountains extending from the McQueston-Keno Hill District through this region and southeast straddling the Yukon - Northwest Territories border. Quartz-muscovite porphyry or aplite occurs in several localities as dykes and sills but is nowhere mineralized except in the Plata area.

There are three major types of mineralization discovered to date in the Hess Mountain region. Quartz, chalcopyrite, pyrite, molybdenite, veins with minor galena and pyrrhotite occur in the periphery of the intrusives or immediately outside the pluton in the altered wall rocks. Chalcopyrite, pyrrhotite and scheelite is noted in skarns developed at the contacts of intrusives with limestone units. Quartz arsenopyrite, pyrite, galena, tetrahedrite and scorodite is found in thrusts accompanied by discordant subsidiary veins containing high grade galena-tetrahedrite mineralization.

TABLE OF GEOLOGIC FORMATIONS

<u>Thickness</u>	<u>Age</u>	<u>Unit</u>	<u>Description</u>
	Tertiary	5	Pale orange weathering, fine to medium grained light tan quartz porphyry to aplite.
+13,000'	Devonian-Mississippian	4	Dark grey to black weathering, predominantly black carbonaceous shale with minor graphitic chert, argillite and barite lenses.
		4a	Pale brown weathering, massive fine to medium grained quartzite with intervals of shale.
		4b	Grey weathering, grey to black massive limestone with ammonoid concretions.
		4c	Grey weathering, light grey to black sericite graphite phyllite.
		4d	Dark grey weathering, pale grey to black massive chert with minor intervals of shale.
		4e	Pale grey weathering, massive to finely banded white to pale grey to dark grey barite.
		+200'	
UNCONFORMITY			
< 2000'	Ordovician-Silurian	2	"Road River Formation" - black shale and chert with limy intervals
+ 6000;	Cambrian and older	1	Pale green and maroon phyllite shale and slate containing massive lenses of pale brown to grey quartzite [1a] and pale grey to dark bluish grey limestone [1b]

GEOCHEMICAL SOIL SAMPLING SURVEY

Soil samples analyzed for both silver and lead were taken every 200 ft. along grid lines established on the central Plata Group. Anomalous values are associated with known lead-silver vein mineralization discovered by cat trenching. Ag/Pb ratios in soils provide an excellent method of gauging anomalies as to type of mineralization they represent.

A small pace and compass grid was established over a galena vein within the Inca claims. Samples were taken every 100 ft. along 200 ft. spaced lines. Contoured values outline known mineralization between lines 0 and 2S, possibly indicating a very limited extent. Anomalies in the northern portion of the grid are yet unexplained and definitely warrant further geochemical coverage.

PHYSICAL WORK

A total of 1362 cat hours were used building a winter tote road from Jeff Lake to the Plata claims, constructing a 2200 ft. airstrip in the Fido Creek Valley, and digging 69 trenches as well as constructing various connecting roads within the Plata claims.

Approximately 311 cat hours were spent constructing a winter tote road from the Canol Road near Jeff Lake to the Plata campsite. The road follows major river and creek valleys and is consequently very swampy during the summer months. Construction of a 6 mile all-weather road between the campsite and airstrip began in early November but was curtailed due to large swampy areas needing great amounts of gravel fill in the creek valleys and permafrost conditions on valley slopes.

The 2200 ft. all-weather gravel airstrip, constructed using roughly 362 cat hours, can easily accommodate both single-engine tail wheel aircraft and twin engine STOL aircraft such as the Twin Pioneer or Twin Otter. The airstrip is located in the Fido Creek Valley, approximately 6 miles south of the Plata campsite, 2 miles north of Narrow Lake, and 110 miles north of Ross River.

Location of all trenches and connecting roads may be noted on the accompanying one inch equals 200 ft. "Geology and Development Map". Trenching above timberline was generally hampered by permafrost and slide material. Trench walls were commonly covered by above talus a few hours after trenches were established. Trenching in the area of Showing #6 was almost impossible due to frozen black fault gouge. Trenching in footwall rock progressed much quicker than in the hanging wall due to extreme jointing and fracturing in the shale and chert. A total estimated 153,000 cubic yards of overburden and rock was removed during the trenching program.

ECONOMIC GEOLOGY

Two distinct types of vein mineralization have been found to date on the Plata Group. The thrust zone contains gold and silver values in a central quartz vein and in surrounding fault gouge. Near the thrust zone many northeast and northwest trending faults contain silver and lead values in a siderite gangue. So far, 29 veins and showings, other than the thrust, have been discovered on the Plata Group.

Thrust mineralization, discovered in Zones 3 and 4 that are likely connected, is exposed in trenches and drill holes over a strike length of 3000 ft. and 1450 ft. vertically. Visible mineralization, noted only in the central quartz vein, consists of disseminated to banded pyrite and arsenopyrite with minor galena, tetrahedrite, sphalerite and boulangerite. Near surface oxidized material contains a plentiful amount of green-yellow-orange scorodite coatings. Although no visible mineralization was observed in the hanging wall gouge, modest silver and gold values were obtained. No significant metal values were found in the footwall gouge.

Zone 4, outlined in Trenches 4 to 12 and diamond drill holes DDH-1 to DDH-6, consists largely of a .5 to 5.0 ft. thick quartz vein grading .2 to 119 ounces per ton silver, averaging roughly 20 ounces per ton and .01 to .25 ounces per ton gold, averaging approximately .06 ounces per ton. Most of the hanging wall gouge has been removed due to erosion, thus the full section has never been truly evaluated. Large 025 degree trending pinches and swells control vein thickness and deposition of mineralization. Major ore deposition has occurred in the thinner portions of the quartz vein and concentrations or ore shoots are expected to trend 025 degrees, dipping 45 degrees to the south.

Zone 3, outlined by Trenches 13 to 17 and 35, has been delineated over a length of 900 ft., averaging 19.5 ounces per ton silver

and .06 ounces per ton gold over a 5 ft. mining width. (All assays have been weighed according to assay interval while averaging). Using current metal prices of \$3 per ounce silver and \$100 per ounce gold, Zone 3 contains roughly 450 tons per vertical ft., with a gross metal value of \$65 per ton. It is questionable if all metal is extractable since the type of hanging wall gouge silver and gold mineralization is unknown.

Although the thrust does contain silver and gold mineralization and is a very strong structure both laterally and vertically, it is thought that a better grade of mineralization is needed to warrant further exploration at this time.

Small high grade lead-silver bearing veins, lenses, pods and shoots, occurring in northeast and northwest fault structures hold the best potential for economic mineralization on the property. These structures are often narrow, generally averaging less than 1 ft., and seldom exceeding a thickness of 5 ft. The most favourable host rocks for the formation of economic lodes are thick bedded Cambrian and Older quartzite and slate. Individual fault structures passing into the footwall shale and chert appear to "horse tail" forming a zone of narrow, irregular and sporadic lenses and pods of mineralization.

Mineralization is predominantly fine to coarse grained, foliated crystalline galena with minor elongate "plate shaped" blebs of tetrahedrite in a gangue of yellow-orange siderite with minor barite and calcite. The ratio of massive galena to gangue is highly variable and sporadic at any ore locality. To date only Zones 1 and 2, as well as Showing #6, contain mineable widths of galena mineralization. Generally, the galena occurs as sporadic lenses and blebs, constituting roughly 30 to 40 percent by volume of the vein. In places, such as Showing #5, large groups of cubo-octahedral

crystals of galena are present with no visible evidence of tetrahedrite where open space filling was predominant. Where repeated brecciation or shearing has occurred, the galena is sheared, gneissic or schistose in appearance (steel galena). Massive orange-brown medium to coarse grained crystalline sphalerite, discovered in Zone 2, occurs peripheral to the main galena mineralization generally as massive blebs and pods in a highly oxidized siderite-limonite breccia.

Oxidation of galena to anglesite is common in the oxidized zones of the veins and showings. Replacement begins as pale cream seams along cleavage planes and gradually advances into the galena along scalloped surfaces until it completely forms a coating around the core of galena. Small subrounded nodules to large blocks of galena with oxidized rings of anglesite, discovered at Showing #6 and in the creek below Zone 3, are relatively stable and moderately resistant to weathering processes.

The amount of silver in the galena varies considerably; there is generally less silver in larger crystalline forms than in the massive foliated zones. Silver-lead ratios are commonly 1:1 to 1.5:1 when tetrahedrite is absent.

Tetrahedrite, the major silver bearing mineral, occurs as discontinuous blebs in massive foliated galena. The percentage of tetrahedrite is directly proportional to the thickness of the galena vein. Using Zone 1 for an example; the 4 ft. thick central portion of the vein contains 646 ounces per ton silver compared to one end with a thickness of 1.5 ft. having 260 ounces per ton silver. Although tetrahedrite was not analyzed, using a volume subtraction from silver-lead assays, it is estimated that pure tetrahedrite runs between 4000 and 5000 ounces per ton silver. Malachite and azurite forms in cavities in near-surface veins resulting from oxidation of tetrahedrite-bearing lodes.

Argentiferous jarosite (Ag Fe basic sulphate) noted in Showing 5, Zone 2 and in shears near Showing #6, commonly contains over 100 ounces per ton of silver.

The following is a description of the major lead-silver bearing zones and showings found to date within the Plata Group.

Zone 1 - located between grid lines 24N and 36N outlined by Trenches 43 to 47, contains two mineralized zones. Partial massive siderite replacement of a limestone unit contains blebs and pods of medium to coarse grained galena with a 1:1 silver-lead ratio. Overall, this unit contains approximately 5-10 percent galena and 5-10 ounces per ton silver. No further evaluation of this unit is contemplated.

The major mineralization consists of a massive foliated galena-tetrahedrite lens in black fault gouge within a 015/25° W trending fault zone between massive brown quartzite and overlying maroon and green slate. The lens measures roughly 50 ft. in length and has a maximum thickness of 4.2 ft. Using a 5 ft. mining width, the 50 ft. long zone contains 28 tons per vertical ft. grading 27 percent lead and 120 ounces per ton silver. Due to its limited size on surface and small tonnage potential, as well as location, further work is not expected.

Zone 2 - located just south of the "Popes Nose", occurs in a 030 degree striking, 55 to 70 degrees westerly dipping fault zone. The structure has been traced for 340 ft. through outcrop and hand trenching. The northern zone consists largely of siderite gangue with blebs and pods of galena and sphalerite. Average grade is roughly 2 percent lead, 1 ounce per ton silver and 5 percent zinc. The southern zone, outlined by hand trenches, contains the best mineralization. The 180 ft. long zone contains 241 tons per vertical ft. grading 35 percent lead and 84 ounces per ton silver.

At current metal prices of \$3 per ounce for silver and \$.18 per pound for lead, this zone contains a gross metal value of \$91,000 per vertical foot.

Mineralization is largely fine to medium grained foliated galena with tetrahedrite as bands and blocks in a siderite gangue within the shear zone. The zone appears to die out to the south as the structure passes into overlying black chert and shale. Considering the 45 degree dip of the units, it is likely that Zone 2 would also rake 45 degrees to the south. This zone holds the best potential for mineable high-grade, small tonnage silver-lead mineralization on the Plata Group.

Vein No. 5 - Massive foliated galena with tetrahedrite blocks occur in argentojarosite rich gouge in a narrow fault zone parallel to the thrust. Massive cubiform galena has formed where the fault structure has intersected a major joint. The extent of mineralization, outlined in Trenches 15 and 18, is very limited as the structure pinches out to the north and south. Maximum thickness of the structure is 2.5 ft. grading 69 percent lead and 115 ounces per ton silver.

Zone 6 - located in a saddle between grid lines 40N and 48N, consists of massive blocks of high-grade galena-tetrahedrite float and galena-siderite-jarosite bearing fault structures in highly sheared footwall black shale and chert. So far Trench 39 has yielded 30 to 40 tons of float material averaging 80 percent lead and 235 ounces per ton silver. A crude alignment of massive galena blocks in the bottom of the trench was sampled and thought to be in place. Further trenching was hampered by permafrost and sloughing walls. Yellow jarosite gouge with blocks of anglesite after galena in a fault structure discovered in Trench 34 contained an unexpected 121 ounces of silver.

Permafrost and the excessive amount of faulted, sheared and fractured black shale and chert have hindered detailed evaluation of this area. Outcrop is scarce probably due to easy erodability of the black shale. Continuity of fault structures can only be assumed. Further trenching within the saddle is not feasible, although it is recommended in the area north of mineralization in Trench 34.

Future evaluation of the mineralized structures and location of the lode source for the large quantity of float found is expected to be extremely difficult and expensive. Assuming almost negligible core recovery, combined with small targets, diamond drilling does not appear feasible. Small scale sinking and underground drifting in the area of massive galena float is likely the best method to assess the area.

Showing No. 8 - is located on a talus covered ridge southwest and on strike with the Zone 2 structure. Limited hand trenching has not revealed the source of massive galena and sphalerite float. It is assumed the lode occurs in a subsidiary or branching fault to the Zone 2 structure. Further work is definitely warranted.

The Inca Showing - consisting of a 4 foot long, 10 inch wide galena lens in chert breccia, is located between lines 0 and 2S on the Inca grid. Mineralization occurs in a subsidiary fault parallel to a major shear and breccia zone trending approximately 025 degrees. No further work is warranted on this showing.

The majority of Showings 9 to 30 consist of medium to coarse grained galena-siderite lenses and pods generally less than 1 ft. thick occurring in uneven, irregular and branching faults in Devonian-Mississippian black shale and chert. Strike length of mineralization is highly variable, generally less than a few tens of feet and often

has a pattern of a series of irregular lenses. Overall, there is generally a ratio of 25 percent galena to 75 percent siderite in mineralized sections. Silver-lead ratios are roughly 1:1 due to absence of silver-bearing tetrahedrite. Individually, these showings are uneconomic but, considered as a whole, they occur in two major zones or belts of mineralization that may have potential for larger tonnage lower grade operations.

CONCLUSIONS AND RECOMMENDATIONS

Prospecting and soil sampling followed by both hand and cat trenching has led to discovery of two major types of vein mineralization on the Plata Group. Low grade gold-silver mineralization in quartz veins within the thrust has been traced over a strike length of 3000 ft. and 1450 ft. vertically. Silver-lead mineralization in a siderite gangue occurs in dilatant zones in both northeast and northwest trending faults. Impressive high grade silver and lead veins occur in Zones 1, 2 and 6. To date, Zone 2 has the greatest potential for developing reserves of high grade small tonnage ore on the property. Greatest fault dilation occurs in the brittle hanging wall quartzite and slate.

Geochemical soil sampling works well in this area. The contoured anomalous lead population appears to outline all near-surface mineralization. Silver analysis of lead anomalies provides one with an excellent guide to amount of tetrahedrite in underlying veins.

Cat trenching has proved to be an effective method for locating and outlining near-surface vein zones. Frozen overburden and fault gouge made trenching and road-building very dangerous and tedious.

The Plata Group has excellent possibilities for economic silver-lead vein mineralization. Depth continuity of Zone 2 may indicate sufficient reserves to initiate a profitable small tonnage underground operation producing direct shipping ore. Underground geologic information obtained together with operational profits from this zone may likely encourage future development of other zones.

Total cost to date incurred on the Plata Group is \$364,252 of which \$184,285 was spent in 1973.

The objective of the 1974 program is to outline and delineate additional mineralized structures with minimum potentials in the hundreds of tons per vertical foot with grades similar to Zone 2. Aggregate potential in excess of 500 tons per vertical foot would justify underground testing. As a model for an individual vein, Zone 2, if it persisted 200 ft. down dip, would have reserves of 50,000 tons with a gross silver-lead value of \$430.00 per ton at \$4.00 per ounce silver and \$.19 per pound lead. The general market outlook for both lead and silver is strong.

It is recommended that a program of continued detailed structural mapping, soil sampling and cat trenching to complete surface exploration of potential areas within the Plata Group be undertaken during 1974. This program has a proposed budget of \$125,840.

PROPOSED 1974 EXPLORATION PROGRAM

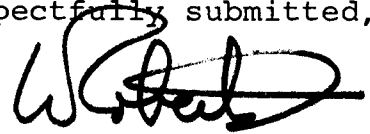
- A. Mineralographic studies on vein material from individual zones and showings.
- B. Fuel haul of approximately 70 drums of diesel from Ross River to Plata Campsite.
- C. Staking of approximately 20 claims covering possible mineralization extending north of the Inca claims.
- D. Further grid development on northwest end of Plata Grid and establishment of a large detailed grid covering lead geochem anomalies on the Inca claims.
- E. Complete soil sampling of all grid lines.

F. Continued program of cat trenching and road building in the following areas:

- (1) Inca claims
- (2) Zone #6
- (3) Showing No. 8 (if underground work on Zone 2 is not contemplated).
- (4) Newly outlined geochem anomalies on the Plata Grid.

G. Continued program of surface vein sampling and detailed trench mapping.

Respectfully submitted,

A handwritten signature in black ink, appearing to read 'W. J. Roberts', written over the typed name below.

W. J. Roberts,

April, 1974

NORTHERN MINERAL GRANT
PROPOSED PLATA BUDGET FOR 1974

Geology

1 man for 12 months, including
NWLC @\$1300/month \$15,600

Geochemistry

1 man for 3 months @\$650/month 1,950
Est. 1500 samples @\$1.50 each 2,250 \$ 4,200

Prospector, Cat Swamper, Soil Sampler

1 man for 3 months @\$700/month \$ 2,100

Assaying

Estimate 200 samples @\$10/sample \$ 2,000

Physical Work

(a) Fuel mobilization from
airstrip in early March.
Est. 100 hrs. @\$35/hr. 3,500

(b) Road building and trenching
900 hrs. @\$35/hr. 31,500

(c) Standby rate @\$1500/mo.
x 9 months 13,500 \$48,500

Fuel

Total cat hours est. 1000 hrs.
Fuel consumption 5½ gal/hr.
Total fuel needed - 5500 gal.
Fuel needed from Ross River
5500-1980= 3500 gals.
(say 80 drums) 2,520

Est. 8 drums reg. gas
360 gals. @\$.90/gal. 324

Est. cost of oil, grease, etc. 300 \$ 3,144

Freight

Estimate \$ 500

Transportation

1 round trip in March: Vancouver- Whitehorse-Vancouver	166	
2 round trips during season	322	
2 Beaver trips return Ross-Plata- Ross in March	400	
2 Round trips Whitehorse-Vancouver in July	367	
March fuel haul - 8 round trips with Pioneer - 1760 mi. x \$1.85/mi.	3,256	
Yukon Bus Lines- Est. 10 round trips @\$15.00/trip	150	
Weekly supply trips by helicopter from Ross - 12 trips @\$780/trip	9,360	
Helicopter reccy, supervisory vists, etc. - est. 20 hrs. @\$150/hr.	<u>3,000</u>	\$ 17,031

Camp Operation

4 men for 100 days @\$10/man/day	4,000	
Camp supplies	<u>500</u>	\$ 4,500

Property Maintenance

Recording fee for assessment work @\$25/claim for 5 yrs.x 200 claims	5,000	
Grouping charge @\$5/16 claims	<u>325</u>	\$ 5,325

Research and Consulting Fees

Estimate		\$ 3,000
----------	--	----------

Contingencies

Estimate		\$ 3,024
----------	--	----------

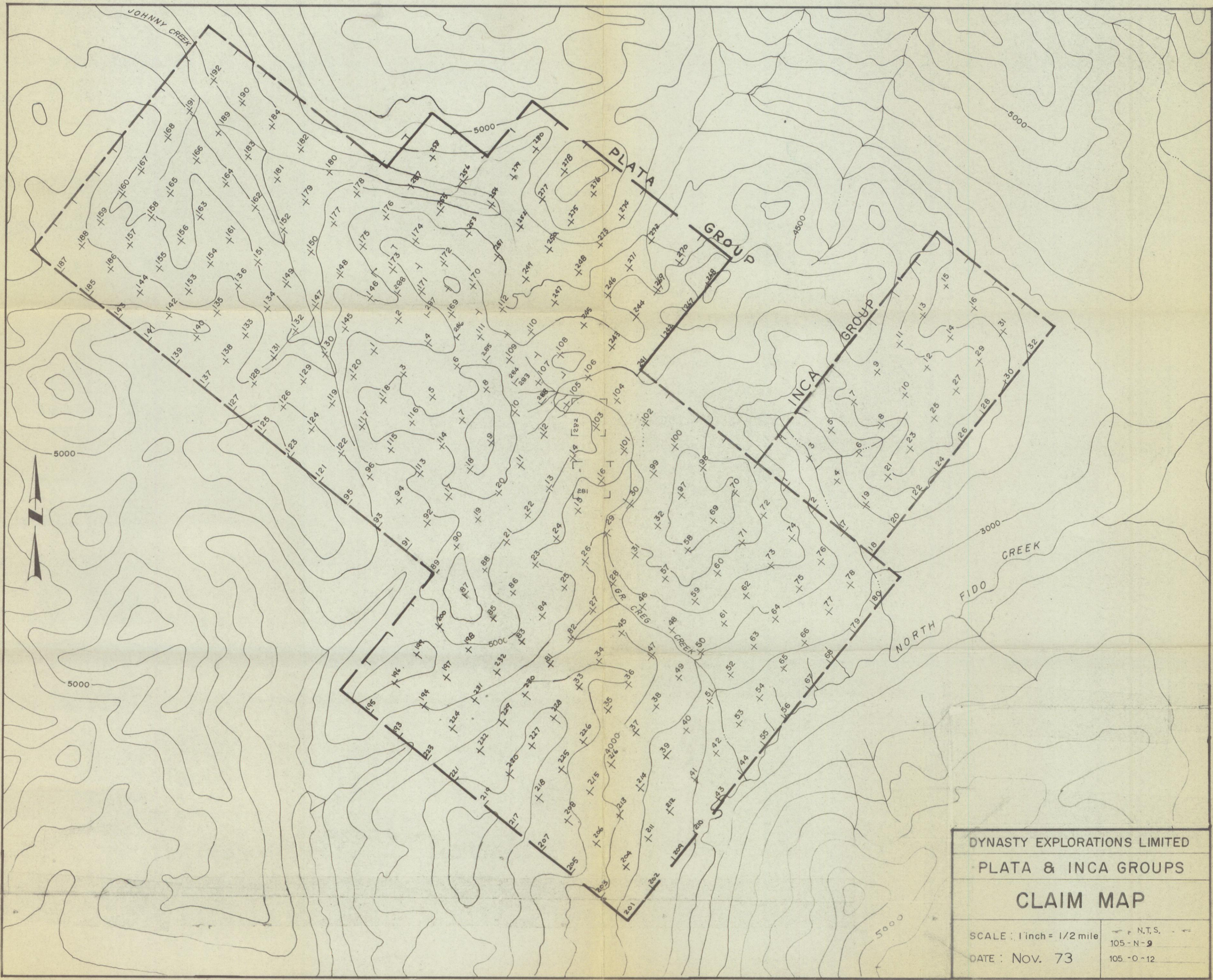
Communication - District Expense

		\$ <u>5,476</u>
--	--	-----------------

Total Direct Costs \$114,400

10% Administration 11,440

TOTAL \$125,840



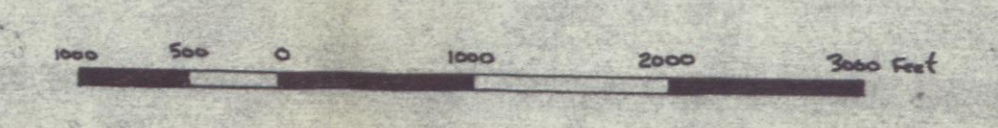
DYNASTY EXPLORATIONS LIMITED	
PLATA & INCA GROUPS	
CLAIM MAP	
SCALE : 1 inch = 1/2 mile	N.T.S.
DATE : Nov. 73	105 - N - 9
	105 - O - 12



LEGEND

- Geochem Anomaly (over 100 ppm Pb)
- Geochem Anomaly (over 500 ppm Pb)
- Thrust Zone
- Geologic Contact
- Fault with black shale and chert
- Hanging wall quartzite, linc, and slate
- Cat roads
- Cat trenches
- Major silver-lead showings

DYNASTY EXPLORATIONS LTD
 PLATA GROUP
 COMPILATION MAP
 NTS 105-N-9, 105-D-12
 W. Roberts April, 1974



PLATA GROUP

INCA CLAIMS