

MAP No:

106-C-7

ASSESSMENT REPORT
N. M. E. A. P.
CONFIDENTIAL
OPEN FILE

X
X

TYPE OF

WORK: Geol.

REPORT FILED UNDER	Chatex Industries L.	DOCUMENT NO. 061141
DATE PERFORMED	Aug. 9-13, 1973	DATE FILED: May 28, 1974
LOCATION - LAT.	64°27'N	AREA: Goz Creek, Yukon
LONG.	132°32'W	
CLAIM NO.	ACE 1-32 Y85822-853	
	ACE 35-48 Y85856-869	
VALUE \$		
WORK DONE BY	R.E. Chaplin	
WORK DONE FOR	Chatex Industries L.	
REMARKS	The property is underlain by a dolostone unit which contains the zinc deposit on the nearby property of Barrier Reef Mines Ltd.	

Indexed 061141

APPENDIX A
CHATEX INDUSTRIES LTD
APPLICATION DATE 1974

CHATEX INDUSTRIES LTD.
1700 Royal Bank Office Tower
1055 West Georgia Street
Vancouver, B.C.

REPORT FOR
ACE1-32, 35-48 MINERAL CLAIMS

BONNET PLUME PROPERTY

BONNET PLUME-GOZ CREEK AREA, YUKON TERRITORY

MAYO MINING DISTRICT

MAP SHEET 106-C-7

Latitude 64°27'N.

Longitude 132°32'W.

Examination Date: Between August 9 and 13, 1973

by

ROBERT E. CHAPLIN, P.Eng.
1761 Drummond Drive,
Vancouver 8, B.C.

Phone: 224-6634

January 18, 1974

*NMEAP
Received Ottawa
May 28, 1974*

TABLE OF CONTENTS

	<u>Page No.</u>
SUMMARY	1
ACE GROUP	2
SUMMARY AND CONCLUSIONS	2
BUDGET	3 } <i>deleted</i>
QUALIFICATIONS OF AUTHOR	4
BIBLIOGRAPHY	5

SUMMARY

Impressive surface showings of zinc with minor lead mineralization was discovered by Barrier Reef Mines Ltd. in the summer of 1973; In the Bonnet Plume River-Goz Creek area, Yukon Territory, Mayo Mining District.

Approximately 1500 mineral claims have been staked in the discovery area at the time of writing this report.

High grade (10% to 20% Zn) mineralization occurs in semi-concordant at breccia pods and lenses within a dolomitic reefoid rock of uncertain age (between Cambrian and Devonian).

The mineralized zones are linked by a N.65° trend - however, the strike of the individual zones commonly trend N-NW. The distance between the main discoveries is 14 miles. Several other zones and float mineral occurrences have been located by stakers for Harman Management Ltd.

The occurrences on the Barrier Reef claims occur as irregularly dispersed quartz-sphalerite breccias. The breccia zones appear to be crudely bedding controlled, consequently there is little apparent vertical continuity to the zones. Extensive areas of lower grade, finely disseminated and/or coatings of zinc minerals, extend laterally from the breccias in gently, south-dipping beds.

The possibility of extensive "low grade" zinc mineralization with high grade sections is the attractive feature of the Barrier Reef property.

Detailed surface sampling and geological mapping is required to assess the economic worth of the properties discovered to date.

ACE
NET GROUP

The ACE 1-32, 35-48 mineral claims were staked to acquire part of the favorable dolostone unit that is host rock for the Barrier Reef zinc occurrences. Record No.'s are Y85822-Y85853 and Y85856-Y85869.

The property is located four miles north of the Barrier Reef Central Group.

Bedrock is well exposed on the ACE claims except for the northern fringe where a ESE tributary stream to Goz Creek forms a valley approximately 1 mile across. This valley floor probably represents the site on erosion surface between interbedded slates and quartzites and the overlying dolostone that occurs as a wedge of outcrop throughout the north-central part of the claims. The dolostone unit is itself overlain by a white massive quartzite unit that further south on the Barrier Reef claims is in fault contact with favorable dolostone.

Three mineralized localities were reported by the stakers (Harman Management Ltd.) all of which are reported to be float mineralization of a secondary (zincite) zinc mineral in porous dolostone. The mineralization is in small gulleys that drain into the mid and upper portions of the ESE trending creek that may represent the surface trace of a conformable contact between slates and dolostones. This creek flows through the BID claims.

CONCLUSIONS AND RECOMMENDATIONS

The favorable dolostone unit located on the ACE claims should be prospected using rock geochemical surveys. If important amounts of zinc mineralization is located, geological mapping and trenching should be carried out.

B I B L I O G R A P H Y

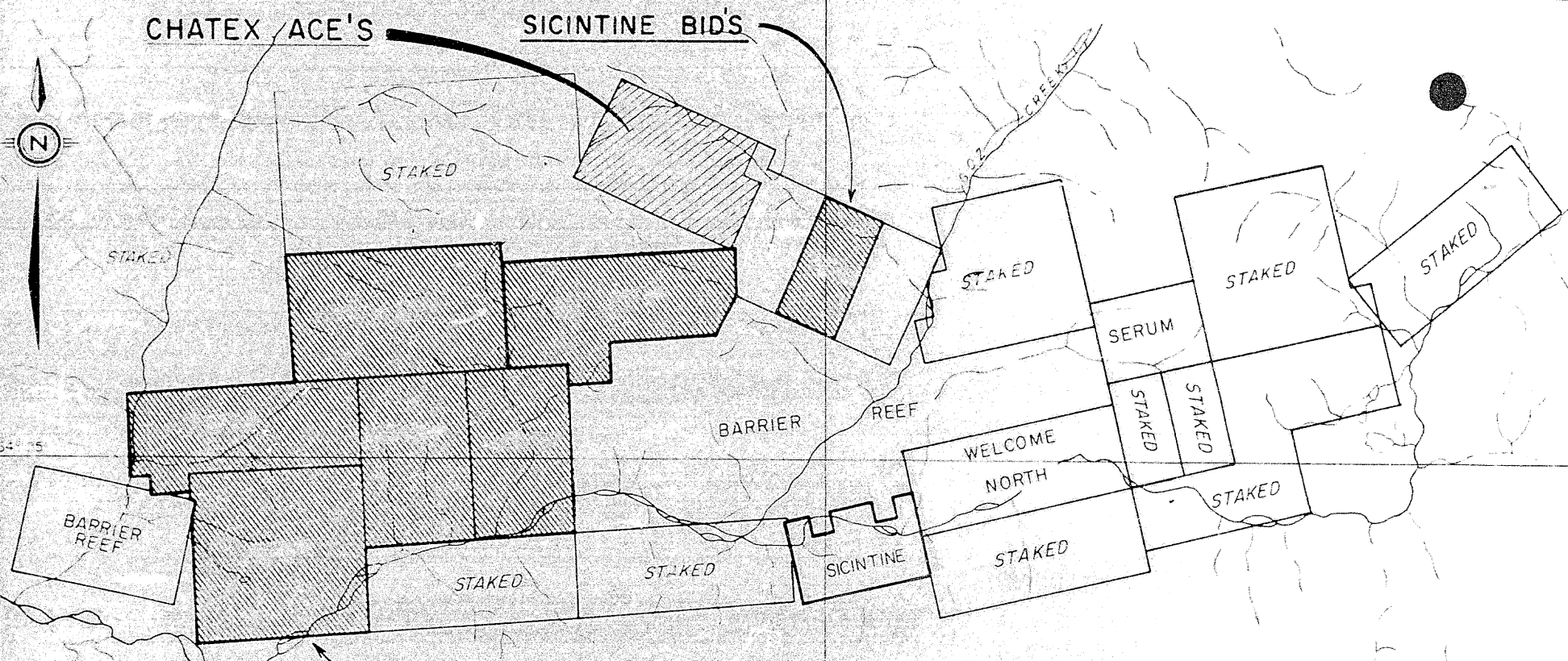
- J. O. Wheeler - G.S.C Paper 53-7
A Geological Reconnaissance of the Northern
Selwyn Mountains Region
- G.S.C - Report of Activities
1969 - 1970
- Mineral Industry Report 1969 - 1970
Volume 1
- 1972 - Composite Geological Map of the Yukon Territory,
G.S.C
- B.C. Securities Commission Form 12
Vancouver Stock Exchange
- Statement of Material Facts
Barrier Reef Resources Ltd. (N.P.L.)
July 24, 1973
- Report to Shareholders - November 23, 1973
Barrier Reef Resources Ltd.

Robert E. Chaplin

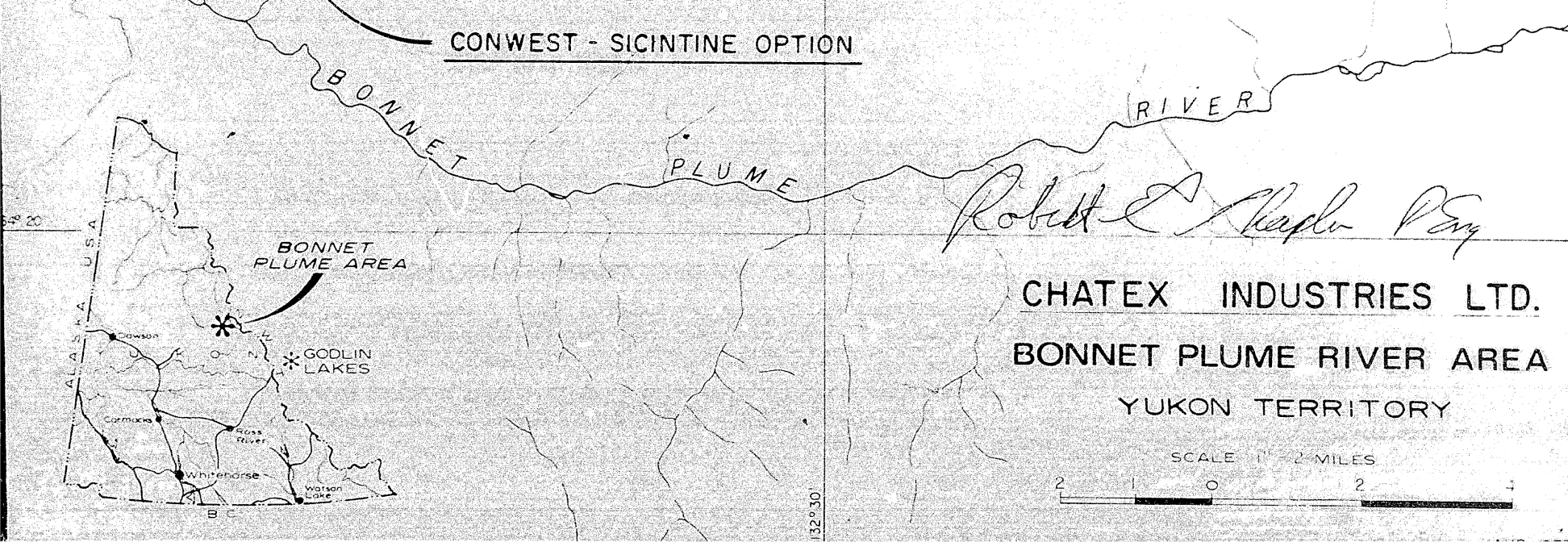
Robert E. Chaplin, P.Eng.
Vancouver, B.C.
January 18, 1974

CHATEX ACE'S

SICINTINE BIDS



CONWEST - SICINTINE OPTION



Robert E. Napier Perry

CHATEX INDUSTRIES LTD.
BONNET PLUME RIVER AREA
YUKON TERRITORY



132° 30'