

MAP No.

106-C-10,11

ASSESSMENT REPORT  
N. M. E. A. P.  
CONFIDENTIAL  
OPEN FILE



TYPE OF  
WORK: Geology

REPORT FILED UNDER	Bow river Res. L & Highhawk Ms. L. DOCUMENT NO. 061140
DATE PERFORMED	DATE FILED: Oct. 10, 1974
LOCATION - LAT.	64 40 N
LONG.	133 00 W
CLAIM NO.	PING, PONG & BAT claims
VALUE \$	
WORK DONE BY	J.W. MacLeod
WORK DONE FOR	Bow River Resources Ltd. & Highhawk Mines Ltd.,
REMARKS	The geological indications on the PING, PONG and BAT claims justifies a program of detailed prospecting, geological mappaing and geochemical investigation.

Report On

PING, PONG & BAT CLAIMS  
Bonnet Plume Area, Yukon Territory  
106 C 10 & 11

For

BOW RIVER RESOURCES LTD.

&

HIGHHAWK MINES LTD.

By

J.W. MacLeod, P.Eng.

Vancouver, B.C.

June 26, 1974

NMEAP  
Received Ottawa  
Oct 10/74

TABLE OF CONTENTS

	PAGE
INTRODUCTION .....	1
SUMMARY & CONCLUSIONS .....	2
PROPERTY .....	3
LOCATION .....	3
ACCESS .....	4
GENERAL .....	5
GEOLOGY .....	5
MINERAL OCCURRENCES .....	6
RECOMMENDATIONS .....	6
COST ESTIMATE .....	7

APPENDIX

ENGINEER'S CERTIFICATE

ILLUSTRATIONS

	<u>SCALE</u>
LOCATION MAP.....	1" = 50 miles
GEOLOGY - PING, PONG & BAT CLAIMS.....	1" = 50,000 ft.
PLAN - PING, PONG & BAT CLAIMS.....	1" = 2,640 ft.

PING, PONG & BAT CLAIMS  
Bonnet Plume Area, Y.T.

BOW RIVER RESOURCES LTD.

&

HIGHHAWK MINES LTD.

INTRODUCTION:

The following report is compiled from a review of available data and verbal communication with people who have worked in the area.

Recommendations are based on the indications that a portion of the PING, PONG and BAT claims are underlain by formations favourable to the deposition of stratabound mineral occurrences.

## SUMMARY & CONCLUSIONS

During the 1973 field season crews employed by Barrier Reef Mines and Cypress Explorations located significant occurrences of zinc mineralization in the relatively isolated section of the Yukon known as the Bonnet Plume Area. The initial reports on the discoveries suggest the presence of a tonnage potential which would justify a smelter to overcome the adverse location.

The PING, PONG and BAT claims are a result of the staking rush following the Barrier Reef discovery and since there is evidence of favourable geological conditions, detailed investigation of the claims is warranted.

PROPERTY:

The property under consideration is made up of the following groups totaling 88 claims.

<u>CLAIMS</u>	<u>RECORD NO.'S</u>	<u>DATE OF RECORD</u>
PING 1-24	Y86146-Y86169	Jan. 18, 1974
PONG 1-40	Y86170-Y86209	Jan. 18, 1974
BAT 1-24	Y86210-Y86233	" " "

LOCATION:

The Bonnet Plume Area is located in the north-eastern part of the Yukon near the headwaters of the Bonnet Plume River.

Some 60 miles of the mapped favorable carbonate horizons has been staked and the PING, PONG and BAT claims are centrally located on this belt, in the vicinity of Black Canyon and Corn Creeks. They are shown on sheets 106 C 10 and 11 in the White-horse Mining District.

Co-ordinates of the property are  $64^{\circ}40'$  North and  $133^{\circ}00'$  West.

ACCESS:

The community of Mayo, 120 miles to the southwest of the property, is serviced by scheduled flights from Whitehorse. Mayo is also accessible by road 170 miles from Whitehorse.

The initial exploration of the claims will require servicing from Mayo to Pinguicula Lake by float aircraft, then by helicopter the remaining 5 to 15 miles east to the claims.

## GENERAL:

The claims are located in an area of rugged topography with elevations ranging from 3500 to 6000 feet. The tree line is approximately the 4000 ft. level. Outcrop is extensive, particularly in areas underlain by the carbonate rocks.

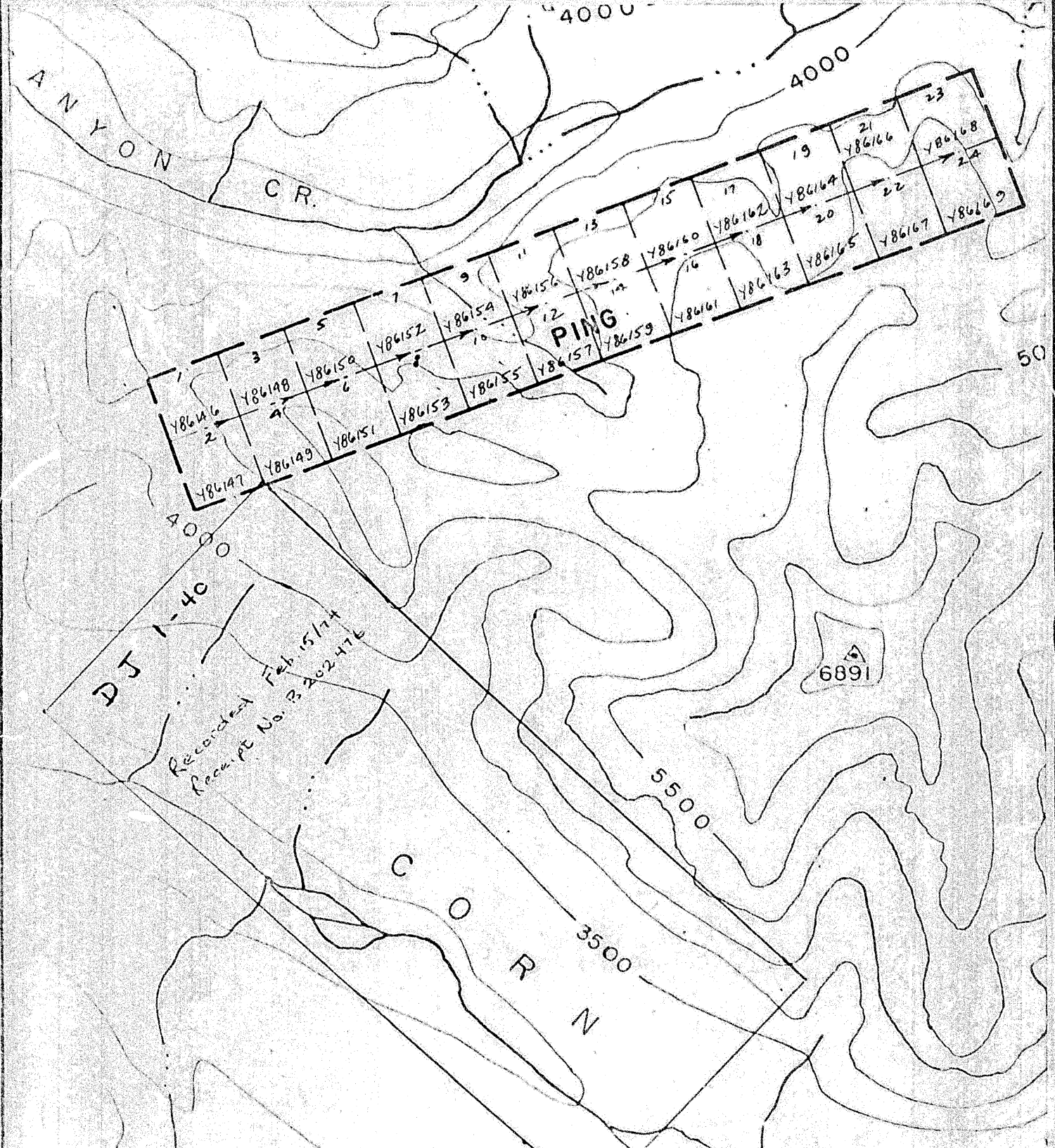
Although a temperature range from  $-60^{\circ}\text{F}$  to  $+80^{\circ}\text{F}$  can be expected at this latitude, such temperatures are not uncommon to a number of Canadian mining communities.

Precipitation approximating 20-25 inches is sufficient to maintain any anticipated mining operations.

## GEOLOGY:

The results of regional mapping of this area by the G.S.C. are available in Paper 53-7, Report of Activities 70-1 Part A and O.F. 205 and 206.

The general area is underlain by sedimentary rocks ranging in age from Precambrian to Triassic. Of particular interest within this thick sequence are three carbonate horizons which are known to host strata bound zinc deposits. These are the Lower Cambrian Sekwi and Backbone Ranges Formations and the dolomite horizon near the top of the Hadrynian. The Cambrian and Hadrynian carbonates are separated by a recessive black slate known as the Sheepbed Formation.



DJ 1-40  
 Recorded Feb. 15/74  
 Receipt No. 3 202-476

MERY ENGINEERING CORP.	
PLAN OF	
BOW RIVER RESOURCES LTD.	
HIGHAWK MINES LTD., CLAIMS	
DRAWN BY: J.W.M	SCALE: 1" = 2040'
DATE: JUNE 25, 74	N.T.S. : 106 0 11

