

061055

EXPLORATION

NTS: 106 C/7



WESTERN DISTRICT



EXPLORATION REPORT

ASSESSMENT REPORT

FUN CLAIM GROUP

OCTOBER 3, 1974

M. S. TRAVIS

PERIOD OF WORK

AUGUST 7, 1974 TO AUGUST 13, 1974

\$ 800

This report has been examined by the Geological Evaluation Unit and is recommended to the Commissioner to be considered as representation work in the amount of \$ 800.00

[Signature]
 Resident Geologist or
 Resident Mining Engineer

Considered as representation work under Section 53 (4) Yukon Quartz Mining Act.

[Signature]
 Commissioner of Yukon Territory

85 samples ^{were} taken 200 Ft apart
on lines 400 Ft apart bearing 010

A small lead anomaly
is recognized near a postulated
fault in an area underlain
by dolomite.

A zinc anomaly is slightly
to the west of and ^{partly} overlapping
the area anomalous in lead.

Geological mapping was done at
500 Ft = 1 in. Poor exposure
prevented confirmation of
the stratigraphic position.
No economic mineralization
was found.

Recommendation is for
further examination of
the anomalous area.

COMINCO LTD.

EXPLORATION
NTS: 106 C/7

WESTERN DISTRICT

GEOLOGICAL AND GEOCHEMICAL REPORT ON THE

FUN MINERAL CLAIM GROUP SITUATE AT

64° 23' N LATITUDE

132° 46' W LONGITUDE

IN THE MAYO MINING DISTRICT OF THE YUKON TERRITORY

LOCATED CLAIMS ON WHICH ASSESSMENT CREDITS ARE REQUESTED:

<u>CLAIM</u>	<u>RECORD NO.</u>	<u>DATE RECORDED</u>	<u>ASSESSMENT</u>	
			<u>CREDIT</u>	<u>AMOUNT</u>
FUN 1	Y85540	September 14, 1973	2 years	\$ 200
FUN 2	Y85541	September 14, 1973	2 years	\$ 200
FUN 3	Y85542	September 14, 1973	2 years	\$ 200
FUN 4	Y85543	September 14, 1973	2 years	\$ 200

A study of Claim Map 106 C/7 shows an apparent overlap of the Fun claims with the Ann Claim Group. This is an apparent plotting error as the Fun claims were staked and recorded before the Ann claims.

Work was done on the FUN 1-4 claims August 7, 1974 and August 10, 1974 to August 13, 1974 inclusive.

Report by:

M. S. Travis

M. S. Travis

Under the Supervision of:

D. W. Heddle

D. W. Heddle, P. Eng.
Chief Geologist,
Exploration.

TABLE OF CONTENTS

INTRODUCTION..... 1
LOCATION AND ACCESS..... 1
SUMMARY..... 1
GENERAL GEOLOGY..... 1
LOCAL GEOLOGY..... 2
STRUCTURAL GEOLOGY..... 2
MINERALIZATION..... 3
GEOCHEMISTRY..... 3
STATISTICAL ANALYSIS..... 3
CONCLUSIONS..... 3

ATTACHMENTS

Affidavit

Exhibit "A" - Statement of Expenditures

Statement of Qualifications

Plate 1 - Location Map	Scale: 1" = 80 miles
Plate 2 - Location Map	Scale: 1" = 1 mile
Plate 3 - Geology Map	Scale: 1" = 500 feet
Plate 4 - Lead Geochemistry Map	Scale: 1" = 500 feet
Plate 5 - Zinc Geochemistry Map	Scale: 1" = 500 feet

* * * * *

COMINCO LTD.

EXPLORATION

WESTERN DISTRICT

INTRODUCTION

Interest in the Bonnet Plume River area started as a result of zinc discoveries by Barrier Reef Resources near the confluence of Goz Creek with the Bonnet Plume River in the summer of 1973. During September of 1973, personnel of Yukon Revenue Mines staked the Fun Group of mineral claims which adjoin the eastern edge of Barrier Reef's GEP Group of mineral claims.

This report is based upon field studies done by Cominco personnel during the period of August 7, 1974 to August 13, 1974. The initial exploration work in this area was aimed at locating sulphide mineralization.

LOCATION AND ACCESS

Physiographically, the Fun Group lies within the northern Selwyn Mountains of the Yukon Territory, approximately 120 miles northeast of the town of Mayo. It lies 1 mile northwest of the confluence of the Bonnet Plume River and Goz Creek.

The property is within the Mayo Mining District, with coordinates of $64^{\circ} 23'$ north latitude and $132^{\circ} 46'$ west longitude and is located on NTS sheet 106C/7.

The area is, topographically, one of high relief with the Fun claims located between 4500 and 5000 feet above sea level.

Access to the property is by float-equipped fixed wing aircraft to Rackla Lake 16 miles to the southwest, then by helicopter to the property.

SUMMARY

Work was done on the Fun Group during the period from August 7, 1974 to August 13, 1974. The claims were geologically mapped on a scale of 1"=500 feet. In addition a geochemical survey was done over most of the property.

Geological mapping showed a succession of interbedded slate and limestone; slate with intercalations of limestone and quartzite; and argillite underlying most of the Fun Group. This unit has been mapped as belonging to the Upper Proterozoic Rapitan Group. A 2000 foot stratigraphic sequence of fine grained brecciated dolomite of questionable age is also present on the property.

A fault contact between the bedded clastic sequence and the dolomite has been postulated but its attitude is not known.

Due to poor rock exposure, no visible lead or zinc mineralization was observed. The geochemical survey outlined a coincident lead and zinc anomaly on the Fun Group. Soil samples returned values up to 11,000 ppm lead and 10,800 ppm zinc.

GEOLOGY

General Statement

Lithological units of the Selwyn Basin geosyncline occupy the general Bonnet Plume River area. The Selwyn Basin is a typical clastic marine basin extending in a northwest-southeast direction in the central eastern section of the Yukon. The Bonnet Plume River area lies on the northern end of this basin.

The sedimentary rock units in the Bonnet Plume area range in age from Proterozoic to Mississippian. The clastic sequences of the area are characteristic of shallow marine "flysch" sedimentary rocks.

The oldest rocks in the general area are the Upper Proterozoic shales and slate which occur in varying colours and are frequently interbedded with minor sandstone, siltstone and limestone. Common in this section are conglomerates of varying coarseness. The Upper Proterozoic is characterized by large sequences of iron rich rock.

The Upper Proterozoic-Cambrian boundary is characterized by a large thickness (>4000 feet) of dolomite overlain by shale, quartzite, limestone and minor dolomite of the Sheepbed Formation.

The Cambrian section contains predominantly carbonate rocks with sections of quartzite, shale and siltstone. This section includes the Sekwi Formation and the Backbone Ranges Formation.

The Ordovician-Silurian rocks in the area are mostly light and dark grey regularly bedded dolomite with minor limestone and black shale.

Structurally the area is intensely deformed by large upright open folds and many normal and reverse faults of widely varying orientations. There is a well developed system of northwest-southeast striking thrust faults superimposed on the whole area.

Local Geology

There is less than one percent outcrop on the Fun Group and for this reason there has been great uncertainty as to which age unit underlying rock belongs to. Blusson and Templeman-Kluit of the GSC have mapped the dolomite underlying the Fun Group as belonging to the Ordovician-Silurian Mt. Kindle Formation and the clastic units as equivalent to the Upper Proterozoic Keele Formation (Hd¹).

Mapping in 1974 indicated that the northern half of the property was underlain by brecciated, dark grey fine grained dolomite. Coarse crystals of dolspar fill solution cavities and fractures in the more highly brecciated areas of the dolomite. This dolomite sequence is thick bedded and typically blocky or massive in appearance. Typical weathering colours are light grey to brownish grey with local patches of limonite stain due to oxidation of disseminated pyrite grains in the rock.

The clastic units on the property were included in the Rapitan Group of Upper Proterozoic age. This unit includes black or brown slate and argillite finely interbedded with sandy dolomite, limestone or quartzite. The limestone beds are medium to dark grey in colour and are mostly fine grained. Locally these limestone units are brecciated and frequent calcite stringers are found throughout the strata.

A subunit included in the clastic sequence is composed of approximately 50 ft. of fine grained, brecciated limestone. This unit was not found continuously along strike due to lack of outcrop. It is possible that this unit is biohermal in nature although recrystallization has destroyed any evidence supporting this theory. This subunit was created on a lithologic basis and it appears to chronologically in the middle of the clastic sequence.

All rock units on the Fun Group have undergone very low grade pressure metamorphism associated with the tectonic history of the area. All of the clastics exhibit some slaty cleavage and fissility and most of the sandy beds have been altered to quartzite. The recrystallization and dolomitization is the most readily visible feature of the metamorphism.

Structural Geology

Bedding attitudes within the slate vary greatly but, in general, beds dip southerly and are locally disrupted by small tight folds trending east-west with unknown plunge. These folds are possibly drag folds related to

a northeast-striking fault which has been postulated from the evidence of the 1974 mapping. This fault marks the contact between the dolomite unit and the clastic unit. This fault was not specifically observed but is interpreted as the best explanation to account for the difference of the southerly dip of the clastic unit and the northeasterly dip of the dolomite. The presence of slickensides with attitude $10^{\circ}/210^{\circ}$ near the contact were also observed and support this interpretation.

MINERALIZATION

Sulphide mineralization was extremely rare, pyrite being the only visible mineral. Rounded, disseminated subhedral grains of pyrite, less than 2mm wide, were observed in the sandy dolomite of the clastic unit and in the massive dolomitic unit.

GEOCHEMISTRY

A soil geochemical survey was done and approximately 85 samples were collected on a grid spacing of 200 feet by 400 feet. A baseline 2800 feet long was marked out on an azimuth of 100° . Crosslines were turned off every 400 feet along the baseline on an azimuth of 010° . Samples were collected at 200 foot intervals along the crosslines.

The survey outlined a coincident lead and zinc anomaly in the dolomitic unit on the property and over the contact between the dolomitic and clastic units. The background values were generally higher over the dolomite than the slate.

STATISTICAL ANALYSIS

Lead

The background values for lead were calculated to be those values less than 95 ppm and threshold values were between 95 and 125 ppm. Anomalous values are those values greater than 125 ppm.

A number of anomalous values were found which clearly outline a small anomalous zone of moderate to extremely high lead concentrations. The highest value within this zone was 11,000 ppm. lead. The anomalous zone lies in an area near the postulated fault and is underlain by the dolomitic unit.

Zinc

The background values for zinc were calculated to be those values less than 1000 ppm and threshold values were between 1000 and 1500 ppm. Anomalous values are those values above 1500 ppm.

A small anomalous zinc zone approximately 800 feet wide was outlined in the survey. The zone is slightly to the west of and partly overlapping the anomalous lead zone. The values within the anomalous zone are moderately high to extremely high in zinc concentration. This anomalous zone is superimposed over a generally high background that occurs over the dolomite unit. The highest value was 10,800 ppm.

CONCLUSIONS

Due to poor rock exposures on the Fun Claim Group, the 1974 geological mapping program did not provide sufficient information as to the stratigraphic sequence underlying this property. The geological prospecting failed to locate any economical mineralization.

The geochemical survey outlined an area of interest on the northern part of the property. Further evaluation of this anomalous area should be carried out.

Report by: Steve Travis
Steve Travis, B.Sc.

Endorsed by: D. W. Heddle
D. W. Heddle, P.Eng.,
Chief Geologist, Exploration

Approved for
Release by: W. T. Irvine
W. T. Irvine, P.Eng.,
Manager, Exploration
Western District

ST/pm
3 October 1974

Distribution:
Mining Recorder (2)
Western District

EXHIBIT "A"

GEOLOGICAL AND GEOCHEMICAL REPORT ON THE

FUN GROUP OF MINERAL CLAIMS

Situate at

64° 23' N. Latitude
132° 46' W. Longitude

NTS 106 C/7

STATEMENT OF EXPENDITURES

FUN GROUP

Salaries:	M.G. Cogill (4 days)	\$188.00
	N. Leggatt (4 days)	209.00
	M.G. Lomenda (1 day)	61.00
Transportation:	Helicopter	203.50
Analyses:		<u>148.75</u>
	TOTAL:	<u><u>\$810.25</u></u>

Signed: _____

Steve Travis
M. Steve Travis

THIS IS EXHIBIT "A" RE THE STATUTORY DECLARATION OF EXPENDITURES
RELATING TO THE GEOLOGICAL AND GEOCHEMICAL SURVEY DECLARED BEFORE
ME ON THE 4th DAY OF October 1974, A.D.

Magnum Brown
A NOTARY PUBLIC IN AND FOR THE
PROVINCE OF BRITISH COLUMBIA

COMINCO LTD.

EXPLORATION

WESTERN DISTRICT

STATEMENT OF QUALIFICATIONS

I, Steve Travis with business address at 2200-200 Granville Square, Vancouver, British Columbia, V6C 2R2, do hereby certify that I have personal knowledge of and have assessed and interpreted the data resulting from this geological and geochemical survey on the FUN mineral claims.

I also certify that:

1. I am a graduate of the University of British Columbia, B.Sc Majors Geology,
2. I have engaged in mineral exploration since graduation.

Respectfully submitted:

Steve Travis

M. Steven Travis

Vancouver, British Columbia

Steve Travis has personal knowledge of the data resulting from the geological and geochemical survey described herein. Mr. Travis received his B.Sc degree in Majors Geology from the University of British Columbia in 1974. He has worked for Cominco Ltd. for three summer field seasons. I consider him a competent geologist.

Signed by:

W.T. Irvine

W. T. Irvine, P.Eng.,
Manager, Exploration
Western District.

NORTHERN MOUNTAIN AIRLINES LTD. CHARTER AND CONTRACT TICKET

Charge to: 20

Date

COMINCO EXPLORATIONS LTD					Date <u>AUG 23/74</u>	
Pilot <u>R SCOTFIELD</u>						P.O.
Base <u>X5</u>		Cash	Cheque	Charge		
A C Type <u>BELL 4763BE</u>		CF <u>QFM</u>	Area			

From SUN - 0.7 To (1)
 To (2) D.F - 1.0 To (3)
 To (4) To (5)
 To (6) To (7)

FARE	Miles At \$		\$	
	Hours At \$			
Contract Rate	<u>1.7</u> At <u>145.00</u>		<u>247.00</u>	
Waiting Time	At \$			
Extra Landings	At \$			
Pilot Expenses				
Other (Including Gas Surcharges Etc.)				
I personally guarantee payment of this charter.			TOTAL CHGE	<u>247.00</u>

Authorized By [Signature]

No 7389

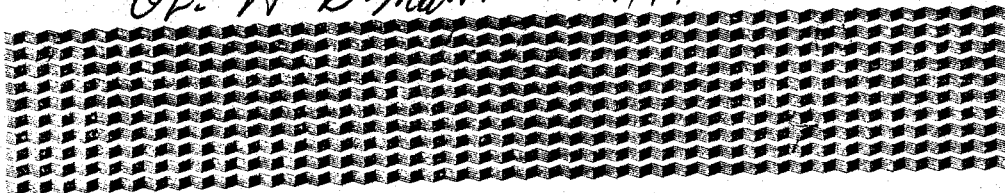
This ticket is expressly subject to the conditions printed on the reverse side of ticket and which are hereby accepted. (Passengers' Signature)

- 1. 230-20-4430 102.00
- 2. 230-29-4430 145.00
- 3. _____ 9. _____
- 4. _____ 10. _____
- 5. _____ 11. _____
- 6. _____ 12. _____

Main Base
 P.O. Box 368
 Prince George, B.C.
 Phone 963-9611
 Telex 047-8880
 2 Base
 P.O. Box 280
 Fort St. James, B.C.
 Phone 996-8224

OL. A. B/M... 15/9/74

Fun



NORTHERN MOUNTAIN AIRLINES LTD.

CHARTER AND CONTRACT TICKET

Contract No. *1170*

Date

<i>COMINCO EXPLORATION LTD</i>				Date <i>AUG 16/74</i>	
Pilot <i>R SCOFFIO</i>					P.O.
Base	<i>KS</i>	Cash	Cheque	Charge	
A C Type <i>Bell 47G3B2</i>	CF <i>DFM</i>	Area			

From *Reece - 1.9* To (1)

To (2) *S.U.H. - 0.7* To (3)

To (4) *D.F. - 0.6* To (5)

To (6) To (7)

FARE	Miles At \$		\$
	Hours At \$		
Contract Rate	<i>3.2</i> At <i>145.00</i>		<i>464.00</i>
Waiting Time	At \$		
Extra Landings	At \$		
Pilot Expenses			
Other (Including Gas Surcharges Etc.)			
I personally guarantee payment of this charter.		TOTAL CHGE	<i>464.00</i>
Authorized By <i>A. B. Mawer</i>			

This ticket is expressly subject to the conditions printed on the reverse side of ticket and which are hereby accepted: (Passengers' Signature)

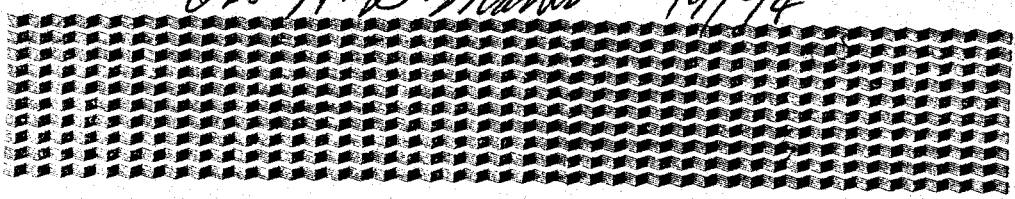
No. 7382

1. *705.23.4430* → *275.5*
2. *230.20.4430* → *101.5*
3. *230.29.4430* → *87.0*
4. _____ 10.
5. _____ 11.
6. _____ 12.

Main Base
P.O. Box 368
Prince George, B.C.
Phone 963-9611
Telex 047-8880
2 Base
P.O. Box 280
Fort St. James, B.C.
Phone 996-8224

Jan

Dr. A. B. Mawer 15/9/74





BONDAR-CLEGG & COMPANY LTD.

764 BELFAST ROAD, OTTAWA, ONTARIO, K1G 0Z5

PHONE: 237-3110

Cominco Limited
2200 - 200 Granville St.
Vancouver, B.C.

INVOICE: No 2336

DATE: September 13, 1974

REPORT NO: 44-145

PROJECT:

237 Analyses for Pb	@ \$ 1.00	\$ 237.00
237 Analyses for Zn	@ .50	\$ 118.50
237 Soil Sample Prep.	@ .25	\$ 59.25

TOTAL \$ 414.75

Transport Charges 17.90

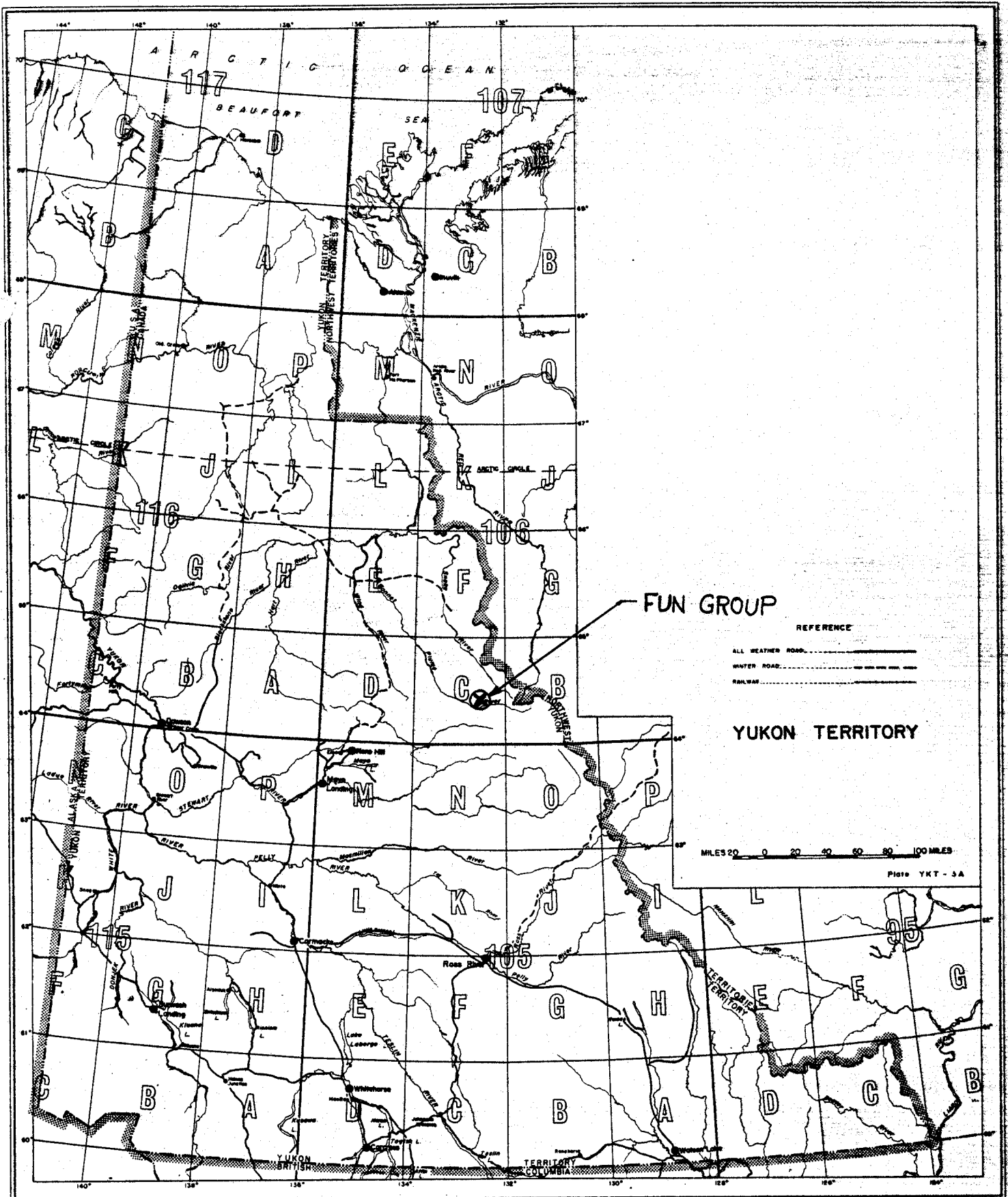
NET TOTAL \$ 432.65

Fun Group
\$ 148.75

~~\$ 700~~
~~128.~~

M Jomanda
230-20-2600 = \$ 390.65
12/9/74

THIS IS A PROFESSIONAL SERVICE
ACCOUNTS DUE WHEN RENDERED

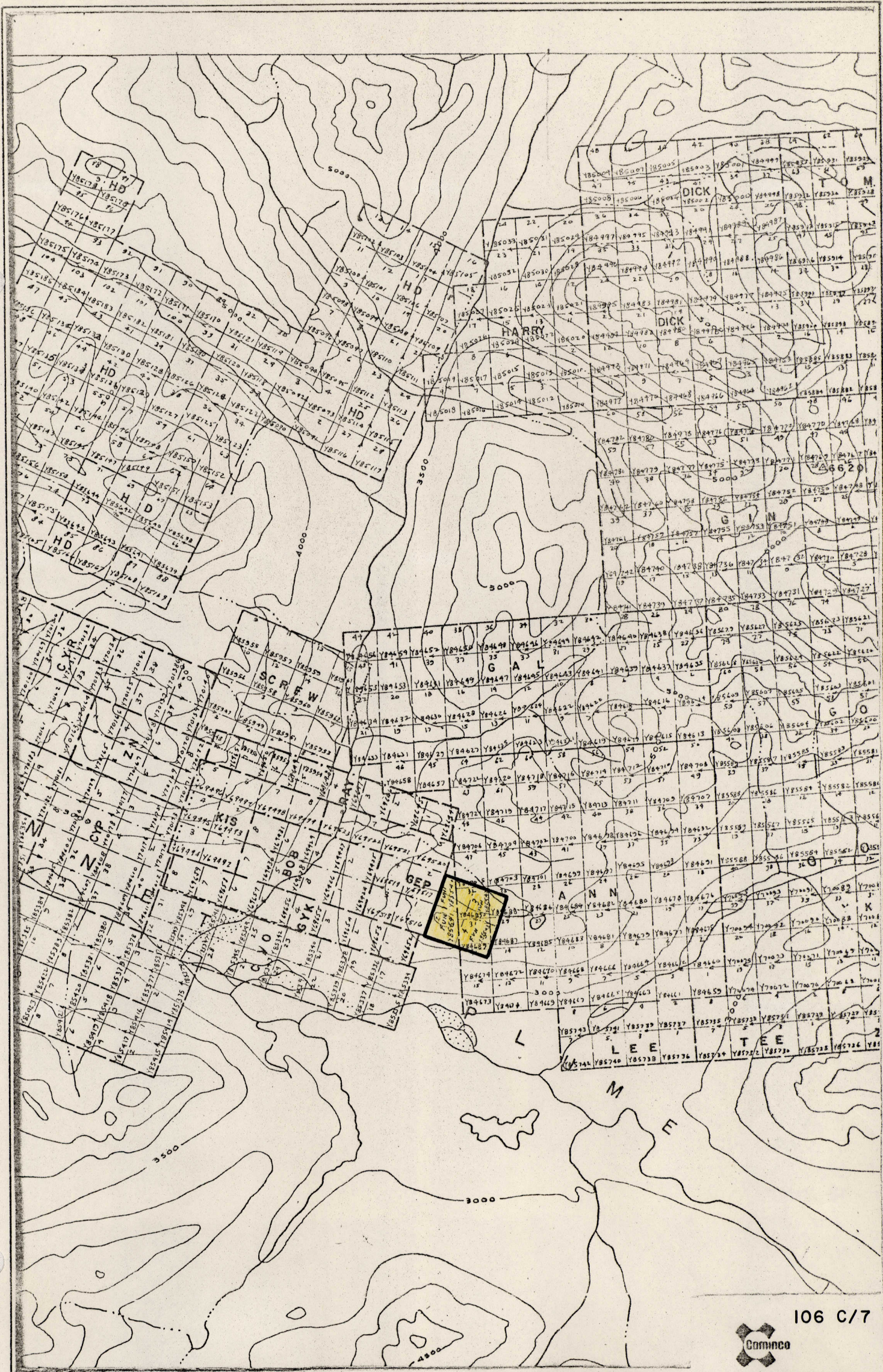


Drawn by:		Traced by:	
Revised by:	Date:	Revised by:	Date:

LOCATION MAP FUN CLAIMS

Scale: AS SHOWN Date: SEPTEMBER '74 Plate: FUN 1





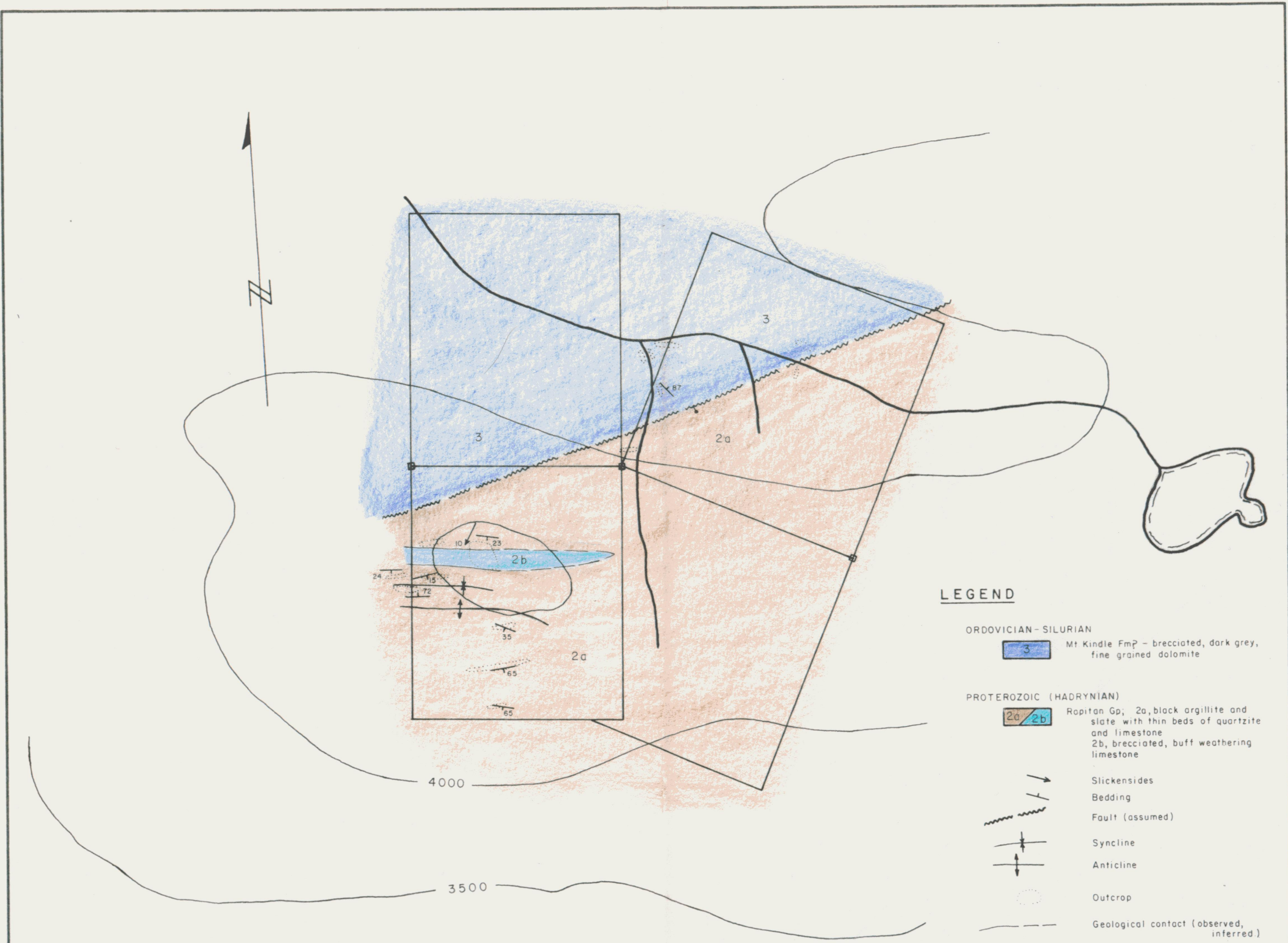
106 C/7



Drawn by:		Traced by:	
Rev. #1 by	Date	Revised by	Date

LOCATION MAP
FUN CLAIMS

Scale: 1" = 1 MILE Date: SEPTEMBER, 1974 Plate: FUN-2



LEGEND

- ORDOVICIAN-SILURIAN
- 3 Mt Kindle Fm? - brecciated, dark grey, fine grained dolomite
- PROTEROZOIC (HADRYNIAN)
- 2a/2b Rapitan Gp; 2a, black argillite and slate with thin beds of quartzite and limestone
2b, brecciated, buff weathering limestone
 - Slickensides
 - Bedding
 - Fault (assumed)
 - Syncline
 - Anticline
 - Outcrop
 - Geological contact (observed, inferred)

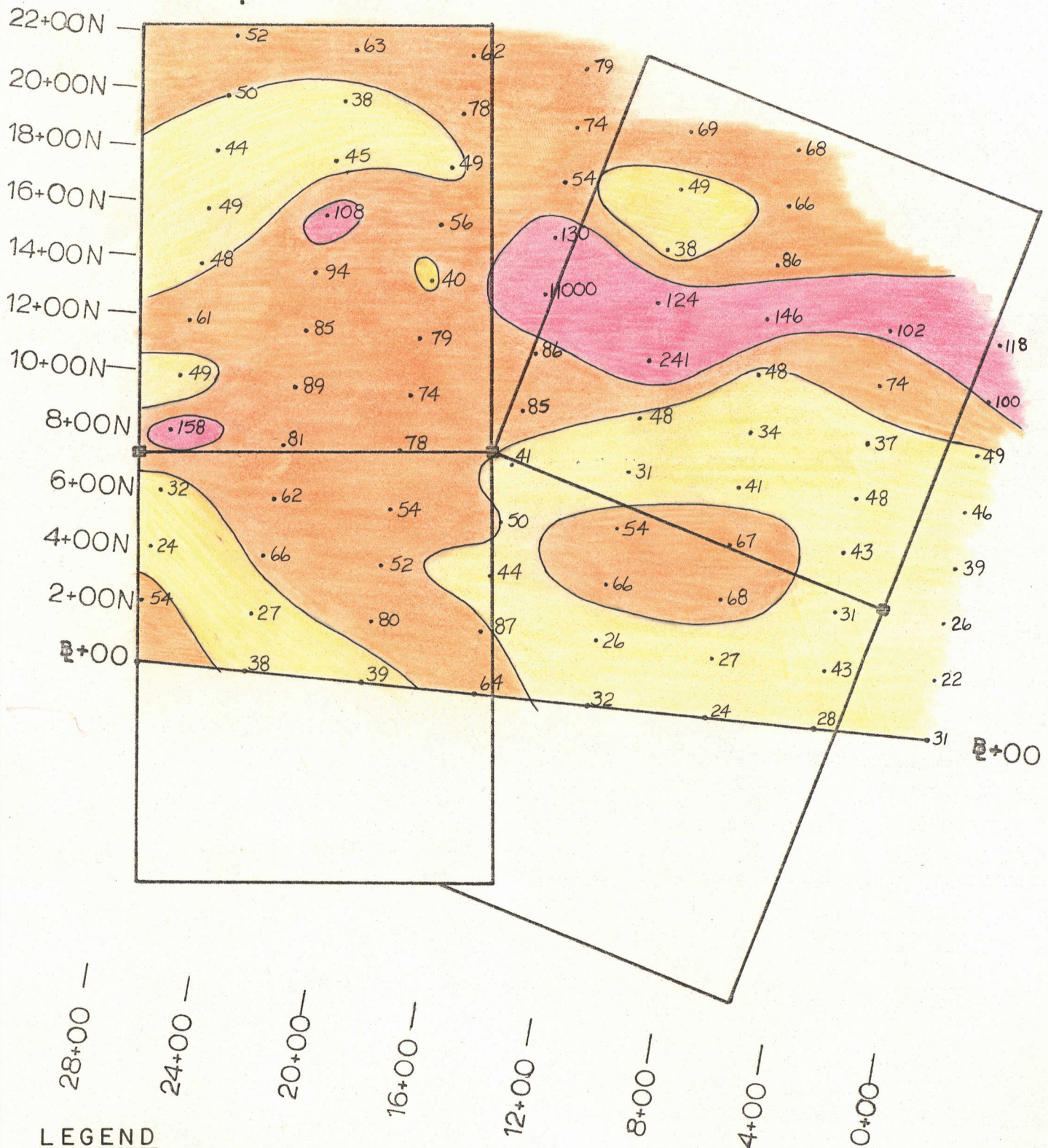
FUN GROUP



GEOLOGY

Drawn by: MST		Traced by:	
Revised by	Date	Revised by	Date

Scale: 1" = 500' Date: Sept. 24/74 Plate: FUN 3



LEGEND

- < 50 ppm
- 50 - 100 ppm
- > 100 ppm



106 C/7

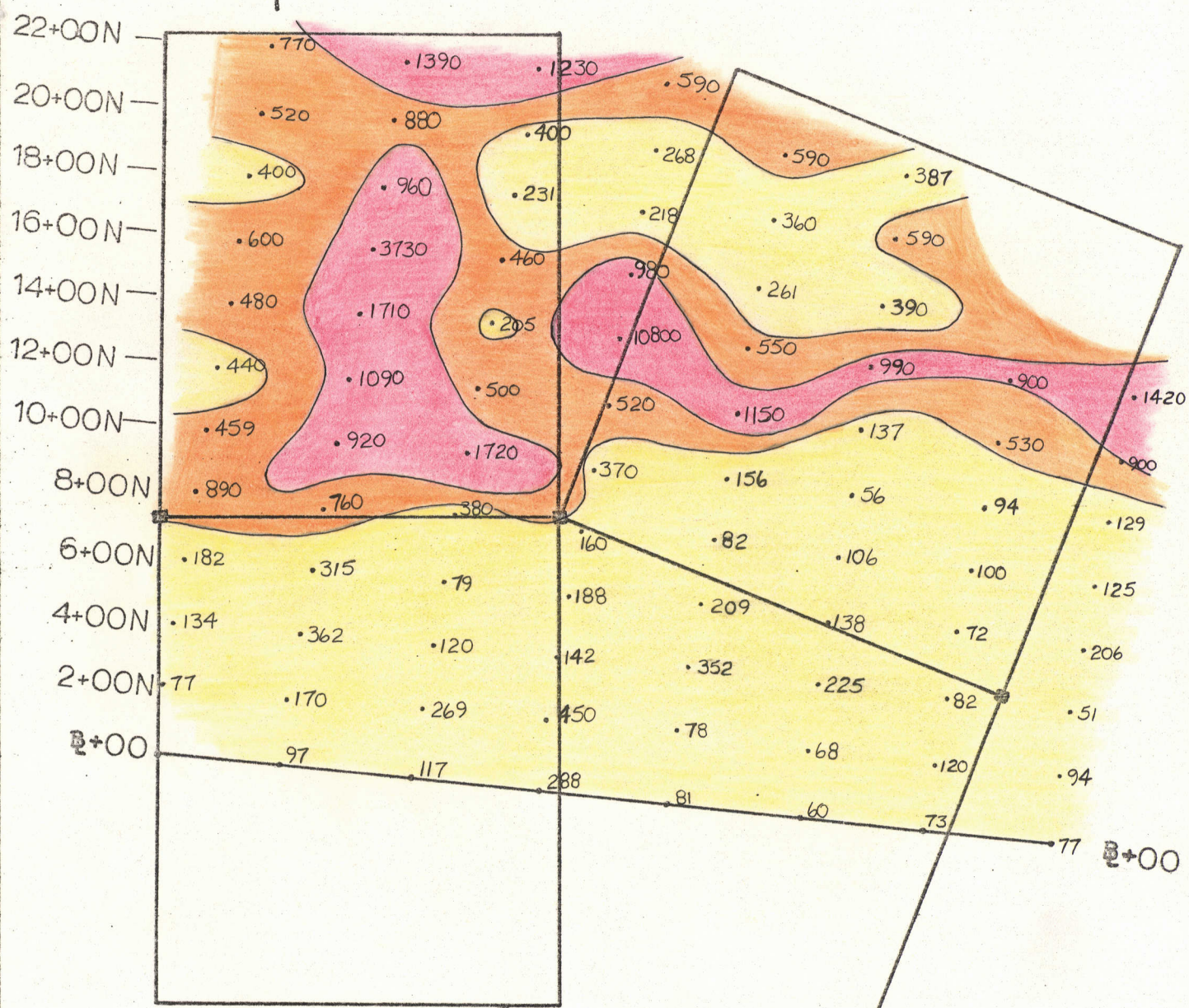
Drawn by: MST		Traced by:	
Revised by	Date	Revised by	Date

**FUN GROUP
GEOCHEMISTRY - Ppm Pb**

Scale: 1" = 500'

Date: Sept. 24, 1974

Plate: FUN 4



LEGEND

- < 450 ppm
- 450-900 ppm
- > 900 ppm



106 C/7

Drawn by: MST		Traced by:	
Revised by	Date	Revised by	Date

**FUN GROUP
GEOCHEMISTRY - Ppm Zn**

Scale: 1" : 500' Date: Sept. 24, 1974 Plate: FUN 5