

GEOLOGICAL AND GEOCHEMICAL REPORT

ON THE

YK CLAIM GROUP

MAYO MINING DISTRICT  
GOZ CREEK AREA, YUKON TERRITORY

N.T.S. 106-C-7  
(64°24'N, 132°40'W)

FOR

TOURNIGAN MINING EXPLORATIONS LTD

709 - 535 Thurlow Street  
Vancouver, B. C.

Resident Geologist or  
Resident Mining Engineer

Considered as representation work under  
Section 53 (4) Yukon Quartz Mining Act

BY

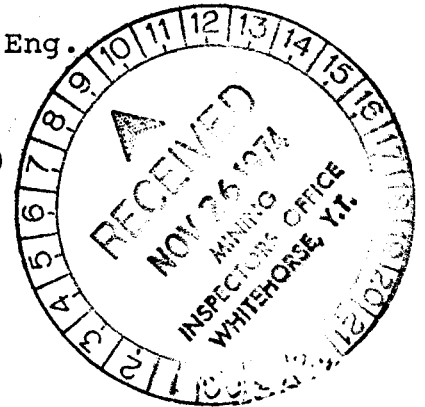
C. G. Verley  
Commissioner of Yukon Territory

C. G. Verley, B.Sc.  
Geologist

Supervised by: O. S. Hairsine, P.Eng.

CORDILLERAN ENGINEERING LIMITED  
1418 - 355 Burrard Street  
Vancouver, B.C. V6C 2G8

OCTOBER, 1974



CLAIMS: YK Numbers 1-40 inclusive.

LOCATION: 114 airmiles NE of Mayo, Y.T.

DATE: July 5th to August 11th, 1974

## TABLE OF CONTENTS

	PAGE
INTRODUCTION .....	1
PROPERTY .....	3
PHYSIOGRAPHY, VEGETATION AND CLIMATE .....	4
GEOLOGY .....	6
Introduction .....	6
Lithology .....	7
Structure .....	9
MINERALIZATION .....	12
GEOCHEMISTRY .....	15
Results .....	16
Discussion of Results .....	18
SUMMARY AND CONCLUSIONS .....	20
RECOMMENDATIONS .....	22

## APPENDICES

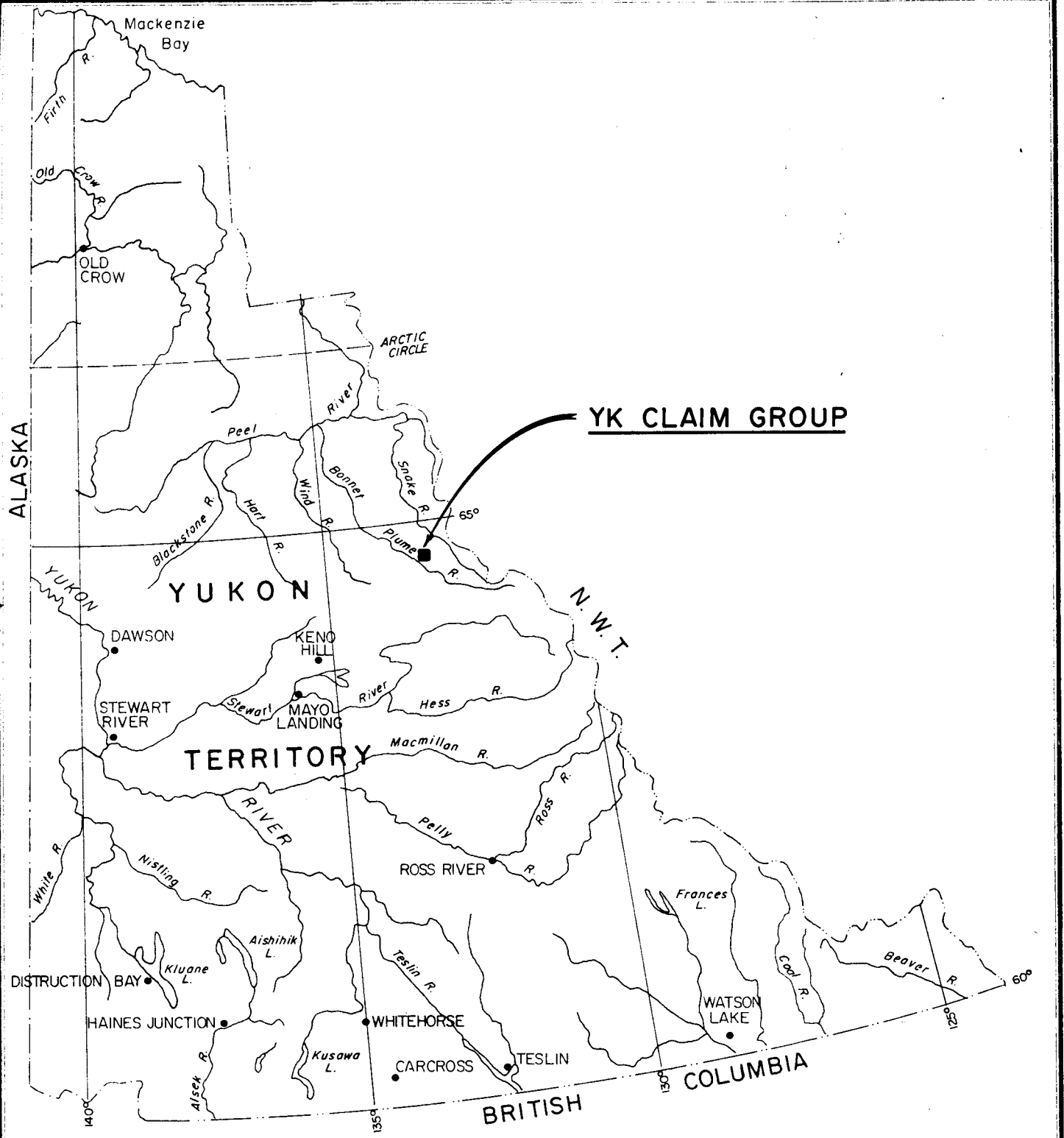
<u>APPENDIX "A"</u>	References	
<u>APPENDIX "B"</u>	Personnel	
<u>APPENDIX "C"</u>	Statutory Declaration	
<u>APPENDIX "D"</u>	Certificates	
<u>APPENDIX "E"</u>	Plates	
<u>Plate 1:</u>	- Claim Map	In Pocket
<u>Plate 2:</u>	- Geology Map	In Pocket
<u>Plate 3:</u>	- Soil Survey - Zinc	In Pocket
<u>Plate 4:</u>	- Soil Survey - Lead	In Pocket

TABLE OF CONTENTS

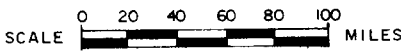
## PAGE

LIST OF FIGURES

<u>Figure 1:</u>	Location Map	Frontispiece
<u>Figure 2:</u>	View Looking East, Across the Property	Follows Frontispiece
<u>Figure 3:</u>	Generalized Stratigraphic Section	Follows pg. 6
<u>Figure 4:</u>	Regional Folding	Page 10
<u>Figure 5:</u>	Effect of Second Phase Folding	Page 11



# LOCATION MAP YK CLAIM GROUP



BY

CORDILLERAN ENGINEERING LTD.

1418 - 355 BURRARD STREET  
VANCOUVER 1, B.C.  
NOV. 1973

FIGURE 1

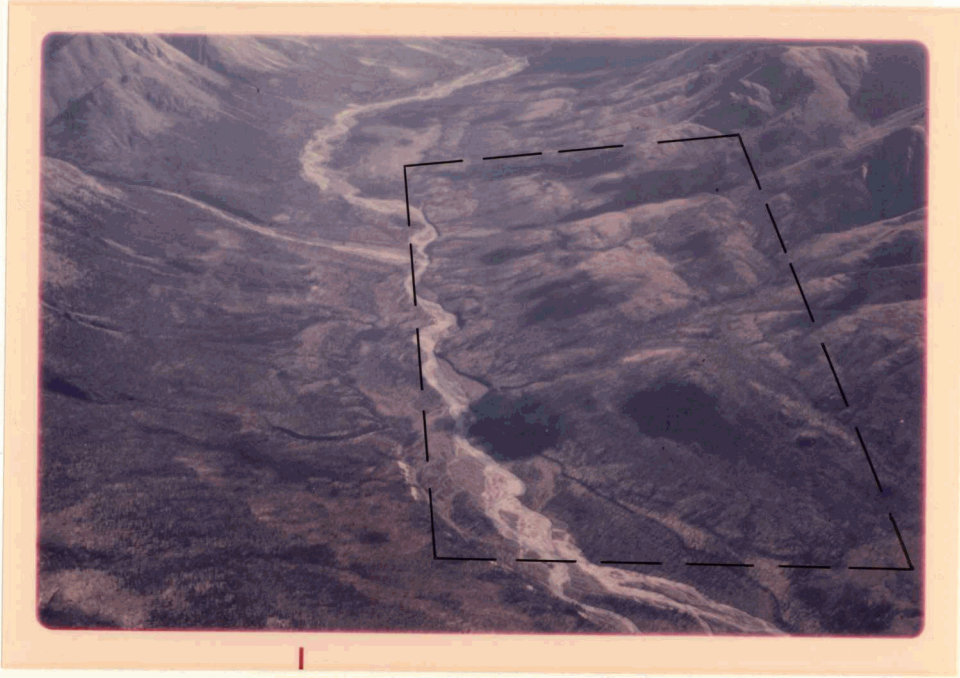


FIGURE 2: View looking east across the property.

## I N T R O D U C T I O N

(Figures 1 and 2)

This report has been written at the request of Mr. J. Hembling, of Tournigan Mining Explorations Ltd., and describes the results of a reconnaissance geochemical soil survey and detailed geological mapping conducted by Cordilleran Engineering Limited on the YK #1-40 claims during the period July 5th through August 11th, 1974.

The YK claim group is located in the Mayo Mining District of the Yukon Territory (refer to N.T.S. Map 106-C-7: latitude  $64^{\circ}24'N$ , longitude  $132^{\circ}40'W$ ) on Goz Creek approximately 3 1/2 miles from the junction of Goz Creek and the Bonnet Plume River. Access to the property is by float plane from Mayo to "Porter Puddle" (110 miles) and then by helicopter to a camp on the property, a distance of 4 miles.

INTRODUCTION (cont'd)

The purpose of the soil survey was to delimit areas of potential lead-zinc mineralization. Detailed mapping on the property determined the stratigraphic sequence with respect to favourable horizons, as well as the structure of the rocks and the nature of the mineralization.

The YK claims were staked in July, 1973 and subsequently acquired by Tournigan Mining Explorations Ltd. after news that lead-zinc mineralization had been found to the northeast and west of the claim group by Cordilleran Engineering Limited's crews working for Barrier Reef Resources Ltd. (N.P.L.).

This report has been written to comply with requirements set forth in the Yukon Quartz Mining Act for assessment purposes.

## PROPERTY

(Plate I)

The YK claim group consists of 40 contiguous mineral claims. Tag numbers for YK 1-40 are Y70056 to Y70095 inclusive. These claims were recorded August 21, 1973. The work described in this report has been submitted to the Mayo Mining Recorder and if accepted the claims will be in good standing until December 31, 1977.

During the course of work on the property fractional claims HPV #1 to HPV #8 were staked between the northern boundary of the YK claim group and the southern boundary of the Goz claims (Conwest et al) over a favourable dolostone unit. These claims were recorded on September 10, 1974 and are presently held in trust.

## PHYSIOGRAPHY VEGETATION AND CLIMATE

The property occupies part of the bottom of Goz Creek valley as well as the low, rolling hills to the south. This relatively wide, glaciated valley has a typical U-shaped morphology.

Most of the property is forest-covered, but vegetation varies from swampy areas with dense buckbush growth to barren moss-covered areas. The rather low relief has limited the development of much bedrock exposure. Most outcrops occur along Goz Creek with other exposures being restricted to ridges of the low lying hills. Extensive "rubble-crop" on the flanks of the hills was found to be an asset in mapping lithologies.

The climate of this part of the Yukon is one

PHYSIOGRAPHY, VEGETATION AND CLIMATE (cont'd)

of extremes. Summers are mild to warm with high ground usually snow-free by the beginning of June. Winters are harsh with temperatures commonly around  $-40^{\circ}\text{F}$ , although snow fall for this area is generally light. Freeze-up usually begins in the last two weeks of September.

# G E O L O G Y

(Figure 3, Plate 2)

## INTRODUCTION

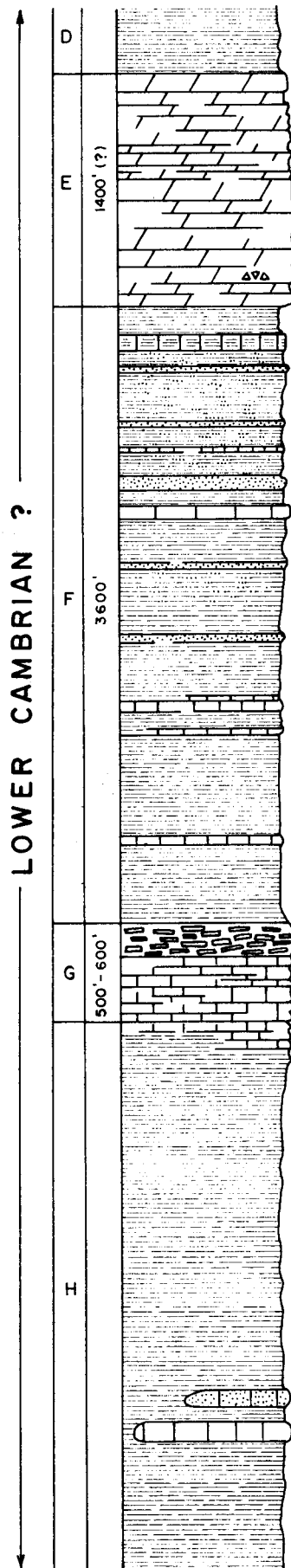
Rocks mapped in the Goz Creek area consist of steep northwesterly dipping shales, phyllites, and carbonates of probable Lower Cambrian age\*. Relatively flat lying carbonates and shales that appear to have been thrust up and over the steep northeasterly dipping sediments occur on the north side of Goz Creek.

J. O. Wheeler of the Geological Survey conducted reconnaissance mapping in this area in the early 1950's and recently S. L. Blusson has undertaken more detailed mapping at 1:50,000 scale (G.S.C. Open File #206). The Goz Creek area had only been lightly prospected before the summer of

---

\*Initially mapped as Hadrynian  
by S.L.Blusson of the Geological Survey.

# GENERALIZED STRATIGRAPHIC SECTION YK CLAIM GROUP



**DOLOSTONE :** Thin-bedded to laminated, dark grey microcrystalline to finely crystalline. Beds are commonly disrupted, giving a zebra-like structure to the rock. White sparry dolomite, massive pyrite, and minor sphalerite are found as open space fillings in these disrupted zones. Minor quartz sand is also found in some of the dolostone beds.

**SHALE :** Thin-bedded, medium to dark grey, slightly phyllitic. Contains rusty weathering, laminations as well as thin, dark grey micrite beds, some of which have a phyllitic sheen on cleavage surfaces. These micrite beds are commonly 1/2 an inch thick, being separated by black, less resistant lamellae; On weathered surfaces they are light grey to buff colored. Sandstone beds up to 3 feet in thickness are not uncommon in this unit. The upper part of this unit - immediate below the dolostone - is graphitic in some areas.

**LIMESTONE :** The top of this sequence consists of intraformational breccia made up of light and medium grey tabular clasts of micrite in a light grey micrite matrix, the breccia is underlain by a thin-bedded orange weathering, pale greenish grey micrite that becomes impure and silty as it grades into the underlying phyllite.

**PHYLLITE :** Light to medium greenish-grey, laminated phyllite that contains black, medium crystalline limestone lenses to the south.

SCALE : 1" = 1000'

FIGURE 3

GEOLOGY - Introduction (cont'd)

1973~~4~~, difficult access and limited geological knowledge being the main reasons for little exploration.

LITHOLOGY

Detailed geological mapping at a scale of 1 inch to 400 feet has allowed the rocks of the property to be subdivided into 5 units.

UNIT D, SHALE

No exposures of this unit occur on the property. Its existence and position have been determined from mapping to the west of the property. This unit is very similar to the shale of Unit F.

UNIT E, DOLOSTONE

This unit is a thin-bedded, dark-grey, finely crystalline dolostone. It is believed to be in the order of 1,400 feet thick although a complete section is not visible on the property. The beds of this unit are commonly disrupted giving

GEOLOGY - Lithology (cont'd)

small breccia zones and a "zebra-like" structure to the rock where white sparry dolomite alternates with thin layers of dark grey dolostone. Quartz sand is a minor constituent in some of the dolostone beds. Pyrobitumen, as open space fillings, is found rarely.

UNIT F, SHALE

Unit F consists of thin-bedded, medium-to dark-grey, slightly phyllitic shale. This shale, approximately 3,600 feet thick, contains thin (1/2 inch) dark grey, micrite beds, some of which are silty and have a peculiar phyllitic sheen developed on cleavage surfaces. Sandstone beds are common and graphite is found in some areas at the top of this unit.

UNIT G, LIMESTONE

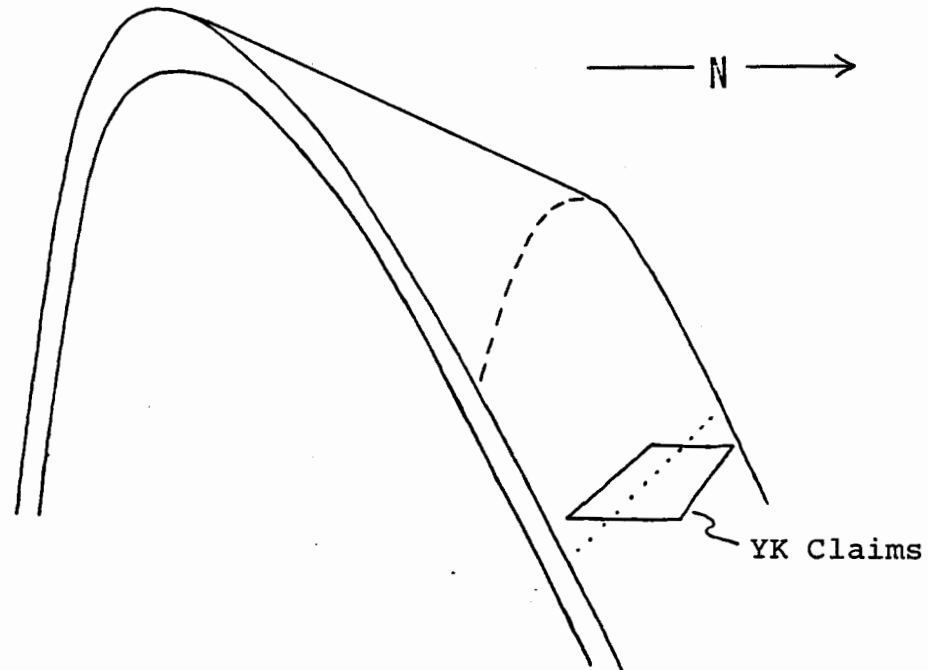
The shale (Unit F) is underlain by a limestone sequence, approximately 500 to 600 feet thick, consisting of an intraformational breccia made up of tabular clasts of limestone in a micrite matrix. This breccia is underlain by a thin-bedded, orange weathering, pale greenish-grey, microcrystalline limestone.

GEOLOGY - Lithology (cont'd)UNIT H, PHYLLITE

Light to medium greenish-grey, laminated phyllite that, in the southern part of the property, contains black, medium crystalline limestone lenses. The contact between the phyllite and the overlying limestone (Unit G) is gradational.

STRUCTURE

In general rocks on the YK claim group have a moderate to steep dip to the north-northwest. A well developed axial plane cleavage in the shale and phyllite as well as mesoscopic, tight, similar folds suggest that these rocks are on the north limb of a regional anticline which plunges moderately to the west and the hinge of which lies south of the property (see Figure 4, page 10).

GEOLOGY - Structure (cont'd)FIGURE 4: Regional folding.

Lineations and some of the minor folds in the shales and phyllites are believed to be the imprint of a second phase of folding. The causative stress system for this second phase was very nearly normal to the system that produced the regional folding. This second phase of folding would have, in effect, buckled the first phase folds as is represented by a sketch of the axial planes of the two phases of folding in Figure 5 (Page 11).

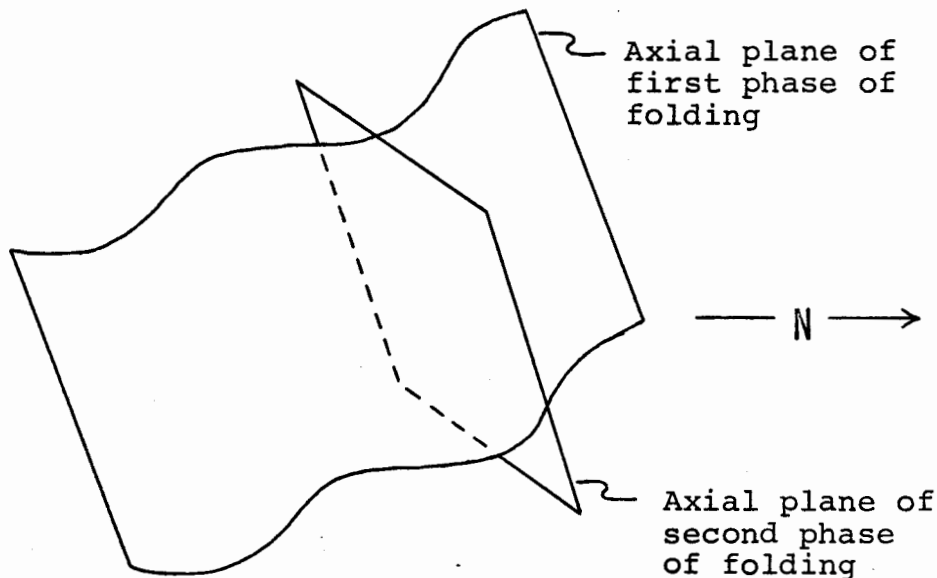
GEOLOGY - Structure (cont'd)

FIGURE 5: Effect of Second Phase Folding

Two major faults, both of which strike approximately  $130^\circ$ , have been traced across the property and cut all lithologies. Although there is no exposure along them, these faults are believed to be steeply dipping since they cut straight across the terrain. Apparent displacement has been estimated at 2,000 and 800 feet on each. Minor faults of a similar attitude to the two major faults are common along exposures on Goz Creek and were probably formed in sympathy with the major faults.

## MINERALIZATION

A small outcrop of thin-bedded dolostone on YK 32 contains pyrite as a matrix to small breccia zones that occur along disrupted beds of this unit. In total, the pyrite probably accounts for not more than 5% of the dolostone, but locally fist-sized pods contain up to 75% pyrite. A trace of sphalerite was found in the matrix of this brecciated dolostone and a rock chip sample taken over 10 feet was analyzed and found to contain 6,000 ppm zinc and 170 ppm lead. A narrow, shallow trench was blasted across 20 feet of this outcrop, exposing more dolostone with pyrite in disrupted zones.

This dolostone unit is believed to be the same as is found at Harrison Creek, 4 miles west of the property, where it contains lead-zinc mineralization and pyrite as a matrix to relatively large breccia zones. In this respect the dolostone unit is a favourable host for lead-zinc bodies

MINERALIZATION (cont'd)

of possible economic potential. Pyrite, associated with lead and zinc sulphides, lends itself to having mineralized zones in the dolostone located by IP.

The stratigraphic relationship between the mineralized units of Barrier Reef Resource's property and the dolostone on the YK claims is uncertain at the present time since a major fault (the movement along which has not yet been determined) lies between the two properties. However, these units are probably not stratigraphically equivalent.

Seepage refluction (Adams, J.E. and M.L.Rhodes, 1960) has been suggested as a possible mechanism for producing the disrupted bedding and small breccia zones in the dolostone unit on the YK claims. If this is the case it is also likely that deposition of sulphides occurred soon after brecciation, during the later stages of diagenesis. Beales and Jackson (1967) contend that this sequence of events describes the genesis of Pine Point and some Mississippi Valley-type lead-zinc deposits. Such an interpretation of the dolostone unit on the YK claims adds weight to the idea that it is a favourable unit in which to look for economic lead-zinc mineralization.

MINERALIZATION (cont'd)

It is also possible that mineralization in the dolostone has been controlled by faulting since a major fault occurs close to the showing.

## G E O C H E M I S T R Y

(Plates 3 and 4)

A geochemical soil survey for lead and zinc was undertaken with 508 samples being collected. Samples were taken by grubhoe at 200-foot intervals along lines spaced 800 feet apart over 101,200 feet of line. Each sample site was flagged and labelled. Sample lines were run north-south from a baseline and were tied into a second baseline 3,100 feet south. Including the baselines, 26,300 feet of line were cut and picketed.

Soil samples were taken from the B horizon which was fairly well developed over most of the property. The sample depth, soil type, colour, drainage, and slope were recorded for each site. Samples were placed in numbered kraft envelopes and delivered to Bondar Clegg and Company Ltd.'s laboratory in Whitehorse. There, each sample was

GEOCHEMISTRY (cont'd)

dried, sieved and the minus 80 mesh fraction digested by perchloric and nitric acids. The atomic absorption method was used for both lead and zinc analysis.

RESULTSZINC

Zinc values ranged from 11 ppm to 3,950 ppm.

The results were statistically interpreted as follows:

Arithmetic mean	$\bar{X}^*$	= 130 ppm
Standard deviation	$S^*$	= 90 ppm
Threshold	$\bar{X} + 2S$	= 310 ppm
Anomalous	$\bar{X} + 3S$	= 400 ppm
Strongly anomalous	$\bar{X} + 5S$	= 680 ppm

From these the following categories were derived:

Background	0 - 129 ppm
Above background	130 - 309 ppm
Possible anomaly	310 - 399 ppm
Probable anomaly	400 - 679 ppm
Strong anomaly	680+ ppm

$$*\bar{X} = \frac{\sum_{i=1}^n x_i}{n}$$

$$*S = \left( \frac{\sum_{i=1}^n (x_i - \bar{X})^2}{n-1} \right)^{1/2}$$

GEOCHEMISTRY - Results (cont'd)LEAD

Lead values ranged from 9 ppm to 78 ppm. The results were statistically interpreted as follows:

Arithmetic mean	$\bar{X}$	= 40 ppm
Standard deviation	S	= 10 ppm
Threshold	$\bar{X} + 2S$	= 60 ppm
Anomalous	$\bar{X} + 3S$	= 70 ppm
Strongly anomalous	$\bar{X} + 5S$	= 90 ppm

From these the following categories were derived:

Background	0 - 39 ppm
Above background	40 - 59 ppm
Possible anomaly	60 - 69 ppm
Probable anomaly	70 - 89 ppm
Strong anomaly	90+ ppm

GEOCHEMISTRY (cont'd)DISCUSSION OF RESULTS

Anomalous zinc samples are scattered along the northern part of the claim group with a cluster located in YK 37 at line 48W-10S to 12S extending to line 40W-8S. This area is coincident with a possible lead anomaly (also line 56W-14S to 20S and 48W-8S). Other zinc anomalies occur at line 8W-8N, 10N, 14N on YK 32 and line 16E-14N and 16N on YK 30. "Possibly anomalous" lead samples and one "probably anomalous" lead sample (line 40E-44S) are found scattered randomly over the property and are believed to be of little consequence with respect to lead mineralization. No "strongly anomalous" lead samples were found.

Since the anomalous samples (zinc and most lead) occur along overgrown overflow channels of Goz Creek and on terraces of glacial till it is believed that these anomalies have been caused by mineralized float that has come down Goz Creek\*. However, since mineralization was observed in the dolostone unit on the north side of the property the possibility

---

\*Two stream sediment samples collected in Goz Creek were analyzed and found to contain 58 ppm lead each, and 362 and 297 ppm zinc.

GEOCHEMISTRY - Discussion of Results (cont'd)

exists that some of the anomalies may be a reflection of mineralization in this unit, although the anomalies do not correlate directly with the showing. It is felt that alluvial cover over most of the dolostone may mask any geochemical effect.

## SUMMARY AND CONCLUSIONS

Tournigan Mining Explorations Ltd. is the owner of the YK #1-40 mineral claims in the Mayo Mining District, Yukon Territory. The claims are 114 miles northeast of Mayo; access being by float plane and/or helicopter.

The claims are underlain by probable Lower Cambrian sediments; shale, phyllite, limestone and dolostone. Mineralization located in the dolostone consists of pyrite and minor sphalerite.

A reconnaissance geochemical soil survey was undertaken to delimit areas of potential lead-zinc mineralization. A total of 508 samples were collected and analyzed for lead and zinc.

SUMMARY AND CONCLUSIONS (cont'd)

A small coincident lead-zinc anomaly was located across YK 37 which may be due to the nature of the alluvial cover in this area. It is believed an accurate geochemical response from the favourable dolostone unit has been masked by the alluvial and glacial till.

## RECOMMENDATIONS

It is recommended that an IP survey be conducted on the northern part of the claim group to test for the existence of any possible sulphide bodies in the dolostone unit (Unit E). Five line-miles of IP, with 800-foot spacings, is estimated to be sufficient. If warranted trenching and diamond drilling would be required to further evaluate any anomalies which may be developed.

Respectfully submitted

CORDILLERAN ENGINEERING LIMITED

*Carl Verley*

Carl G. Verley, B.Sc.  
Geologist

SUPERVISED BY:

*O. S. Hairsine*  
O. S. Hairsine, P.Eng.  
Geologist

October, 1974.

REFERENCESADAMS, J.E. and RHODES, M.L.:

- 1960: "Dolomitization by Seepage Refluction"  
Amer.Assn.Pet.Geol. Bull 44, pp.1912-1920.

JACKSON, S.P. and BEALES, F.W.:

- 1967: "An Aspect of Sedimentary Basin  
Evolution: The concentration of  
Mississippi Valley-Type ores during  
late Stages of Diagenesis"  
Bull. of Can.Pet.Geol., Vol 15, No.4,  
pp. 384-433.

WHEELER, J.O.:

- 1954: "A Geological Reconnaissance of the  
Northern Selwyn Mountains Region,  
Yukon and North West Territories".  
G.S.C. Paper 53-7.

PERSONNEL

Rudolf Durfeld

#112 - 1915 Haro Street  
Vancouver, B.C.

Glen Holmes

R.R. #1  
North Bay, Ontario

Grant Paulson

R.R. #2  
404 Polaris Drive  
Prince George, B.C.

Carl Verley

3829 West 35th Avenue  
Vancouver, B.C.

CANADA )  
          ) In the matter of a geochemical and geological  
          ) report on behalf of Tournigan Mining Explorations  
TO WIT: ) Ltd.

I, John W. Stollery agent for Cordilleran Engineering Limited  
of the city of Vancouver, Province of British Columbia

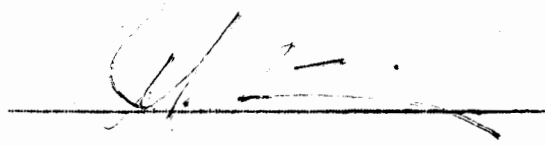
do solemnly declare, - that linecutting, trenching, geochemical soil sampling and geological mapping were conducted on the YK #1-40 mineral claims in the Mayo Mining District, Yukon Territory during the period July 5th through August 11th, 1974.

This work was done at a lump sum cost of \$16,000 by Cordilleran Engineering Limited for Tournigan Mining Explorations Ltd. on a firm contract basis.

TOTAL COST = \$16,000.00

And I make this solemn declaration conscientiously believing it to be true and knowing that it is of the same force and effect as if made under oath and by virtue of The Canada Evidence Act.

Declared before me at VANCOUVER )  
in the PROVINCE OF BRITISH COLUMBIA this )  
13<sup>th</sup> day of NOVEMBER 1974)



W. Brown  
A Commissioner for Oaths for Yukon Territory OR Notary Public for

Notary Public in and for the Province of British Columbia

---

**CORDILLERAN ENGINEERING LIMITED**

---

MINERAL EXPLORATION  
MANAGEMENT AND  
ENGINEERING CONSULTANTS

1418-355 BURRARD STREET  
VANCOUVER, B.C.  
V6C 2P8  
TELEPHONE (604) 681-8381

I N V O I C E

August 15, 1974.

Tournigan Mining Explorations Ltd.  
704 - 535 Thurlow St.  
Vancouver, B.C.  
V6E 3L2

ATTENTION: Mr. J. N. Hembling  
Exploration Manager

---

Re: YK 1-40 MINERAL CLAIMS, Mayo Mining District  
Bonnet Plume Area, Yukon Territory

---

To all aspects concerning geological and  
geochemical evaluation of the above claim  
group .....

\$16,000.00

TOTAL AMOUNT DUE

\$16,000.00

**INVOICE**  
ACCOUNTS DUE WHICH RENDERED

---

**CORDILLERAN ENGINEERING LIMITED**

---

MINERAL EXPLORATION  
MANAGEMENT AND  
ENGINEERING CONSULTANTS

1418 - 355 BARRARD STREET  
VANCOUVER, B.C.  
V6C 2P8  
TELEPHONE (604) 681-8381

WRITER'S CERTIFICATE

I, Carl G. Verley of Vancouver, British Columbia hereby certify that:

1. I am a geologist residing at 3829 West 35th Avenue, and employed by Cordilleran Engineering Limited of 1418 - 355 Burrard Street, Vancouver, B.C. V6C 2G8.
2. I am a graduate of the University of British Columbia, B.Sc., in 1974, and have practiced my profession since that time.
3. I am the author of this report which is based on work conducted on the YK #1-40 mineral claims during the period July 5th through August 11th, 1974. This work included picketing lines, geological mapping, geochemical sampling, and trenching, undertaken on behalf of Tournigan Mining Explorations Ltd.
4. I have no beneficial interest in the properties or securities of Tournigan Mining Explorations Ltd. nor do I expect to receive any.

CORDILLERAN ENGINEERING LIMITED

*Carl Verley*

Carl G. Verley, B.Sc.  
Geologist

October, 1974  
Vancouver, B.C.

---

**CORDILLERAN ENGINEERING LIMITED**

---

MINERAL EXPLORATION  
MANAGEMENT AND  
ENGINEERING CONSULTANTS

1418 - 355 BURRARD STREET  
VANCOUVER, B.C.  
V6C 2P8  
TELEPHONE (604) 681-8381

SUPERVISOR'S CERTIFICATE

I, Owen S. Hairsine of Port Moody, British Columbia hereby certify that:

1. I am a geological engineer residing at 1069 Cecile Drive, Port Moody, B.C.
2. I am employed by Cordilleran Engineering Limited of 1418 - 355 Burrard Street, Vancouver, B.C.
3. I received a Bachelor of Science degree from Michigan Technological University, Houghton, Michigan in 1969 and have practiced my profession since that time.
4. I am a member of the Association of Professional Engineers of the Province of British Columbia.
5. I supervised the writing of this report and the field work upon which it is based.
6. I have no beneficial interest in Tournigan Mining Explorations Ltd. or the mineral claims described in this report, nor do I expect to receive any.

CORDILLERAN ENGINEERING LIMITED



O. S. Hairsine, P.Eng.  
Geologist

October, 1974  
Vancouver, B.C.



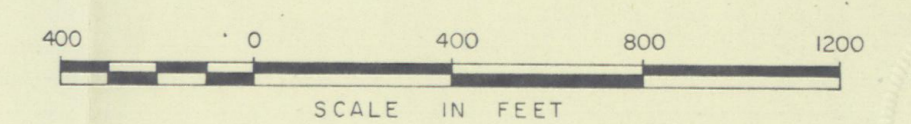
TOURNIGAN MINING EXPLORATIONS LTD.

**CLAIM MAP**

**YK CLAIM GROUP**

NADALEEN RIVER AREA (N.T.S. 106C)

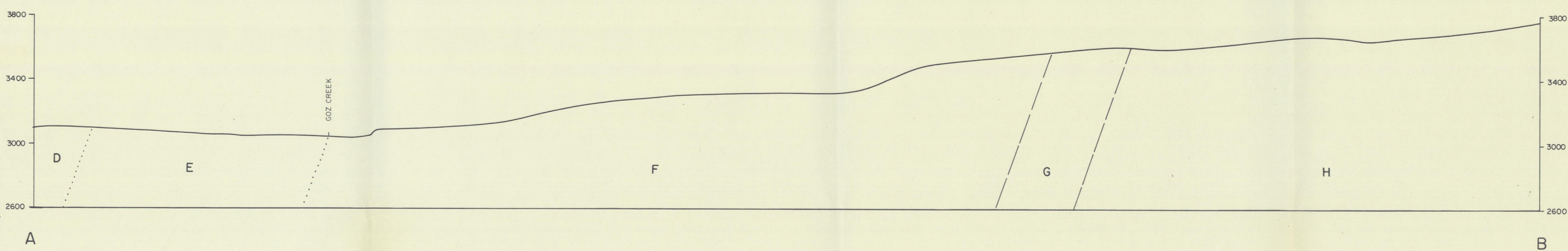
MAYO MINING DISTRICT, YUKON TERRITORY



BY  
CORDILLERAN ENGINEERING LTD.  
1418 - 355 BURNARD STREET  
VANCOUVER 1, B.C.  
OCT. 1974



GENERALIZED STRUCTURAL CROSS-SECTION  
FROM A TO B

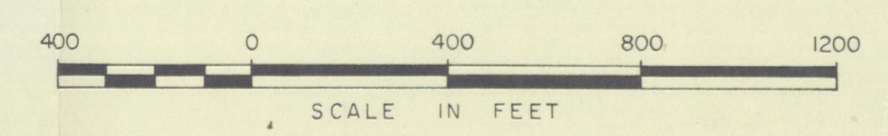


LEGEND

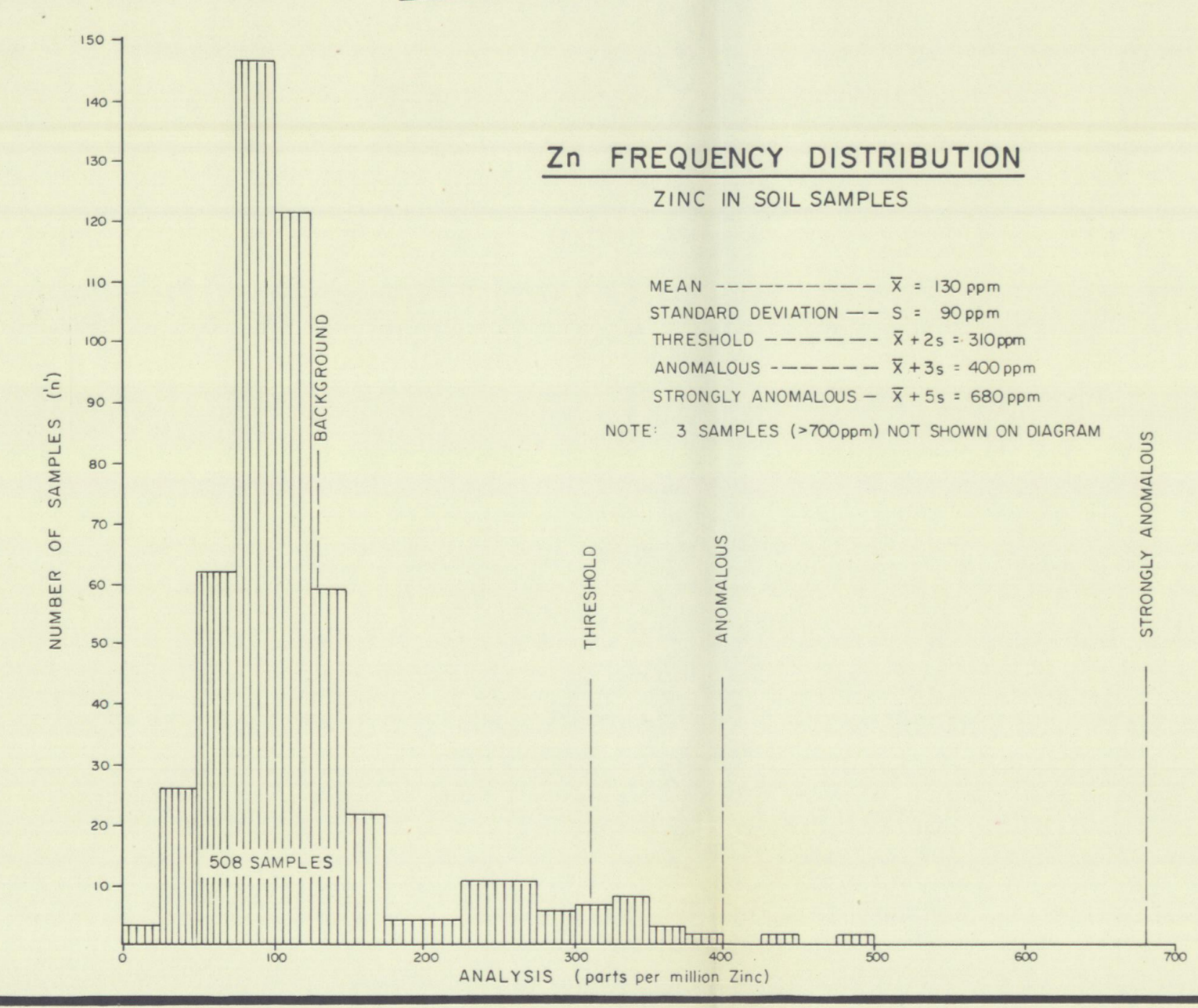
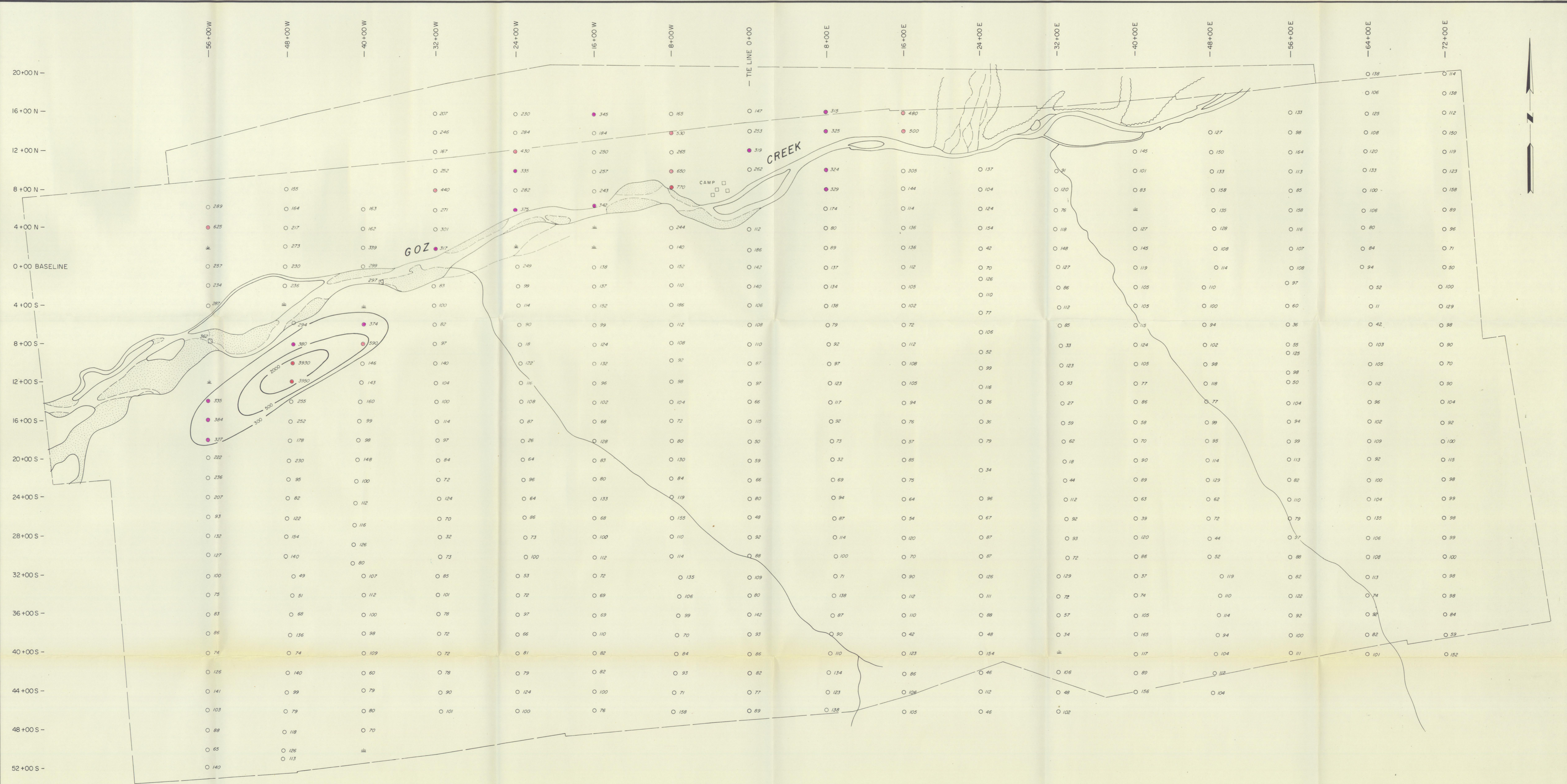
- D** SHALE: NO EXPOSURES OF THIS UNIT OCCUR ON THIS PROPERTY, BUT WORK TO THE WEST SHOWS IT TO BE VERY SIMILAR TO THE SHALE UNDERLYING THE DOLOSTONE.
- E** DOLOSTONE: THIN-BEDED TO LAMINATED, DARK GREY, MICROCRYSTALLINE TO FINELY CRYSTALLINE. DOLOSTONE BEDS ARE COMMONLY DISRUPTED, GIVING A ZEBRA-LIKE STRUCTURE TO THE ROCK IN PART. DOLMITE AND PYRITE, AS WELL AS SPHALERITE ARE FOUND AS OPEN SPACE FILLINGS IN THESE DISRUPTED ZONES. MINOR QUARTZ SAND IS ALSO FOUND IN SOME OF THE DOLOSTONE BEDS.
- F** SHALE: THIN-BEDED, MEDIUM TO DARK GREY, SLIGHTLY PHYLITIC SHALE THAT CONTAINS RUSTY WEATHERING LAMINATIONS AS WELL AS DARK GREY MICRITE BEDS AND SANDSTONE BEDS.
- G** LIMESTONE: THIN-BEDED ORANGE WEATHERING, PALE GREENISH-GREY MICROCRYSTALLINE LIMESTONE. THE TOP OF THIS SEQUENCE IS MARKED BY A BED OF INTRAFORMATIONAL BRECCIA CONSISTING OF LIGHT GREY AND MEDIUM GREY TABULAR LIMESTONE CLASTS, AS WELL AS CLASTS OF THE THIN-BEDED ORANGE WEATHERING LIMESTONE.
- H** PHYLITE: LIGHT TO MEDIUM GREENISH GREY, LAMINATED PHYLITE THAT CONTAINS BLACK, MEDIUM CRYSTALLINE LIMESTONE LENSES TO THE SOUTH.
- x Zn, Fe MINERALIZATION; SPHALERITE, PYRITE
- BEDDING
- CLEAVAGE
- FRACTURES
- AXIAL PLANE TO MINOR FOLDS
- GEOLOGICAL CONTACT, INFERRED, ASSUMED
- FAULT
- OUTCROP

NOTES: TOPOGRAPHY BY MELHANN SURVEYING & ENGINEERING LTD.  
MAGNETIC DECLINATION 34° 30' (1975)  
CONTOUR INTERVAL: 50 FEET

TOURNIGAN MINING EXPLORATIONS LTD.  
**GEOLOGY MAP**  
YK CLAIM GROUP  
NADALEEN RIVER AREA (N.T.S. 106C)  
MAYO MINING DISTRICT, YUKON TERRITORY



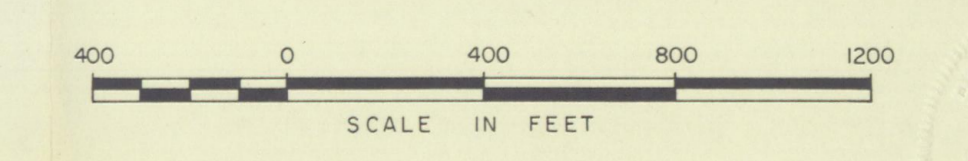
BY  
CORDILLERAN ENGINEERING LTD.  
1418 - 355 BARRARD STREET  
VANCOUVER 1, B.C.  
OCT 1974



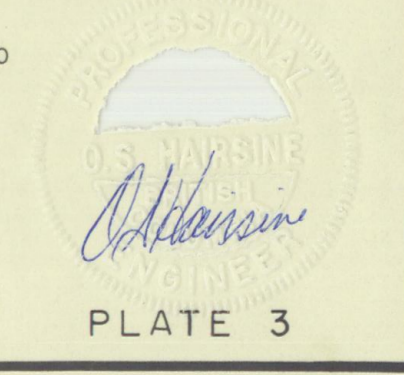
**EXPLANATION**

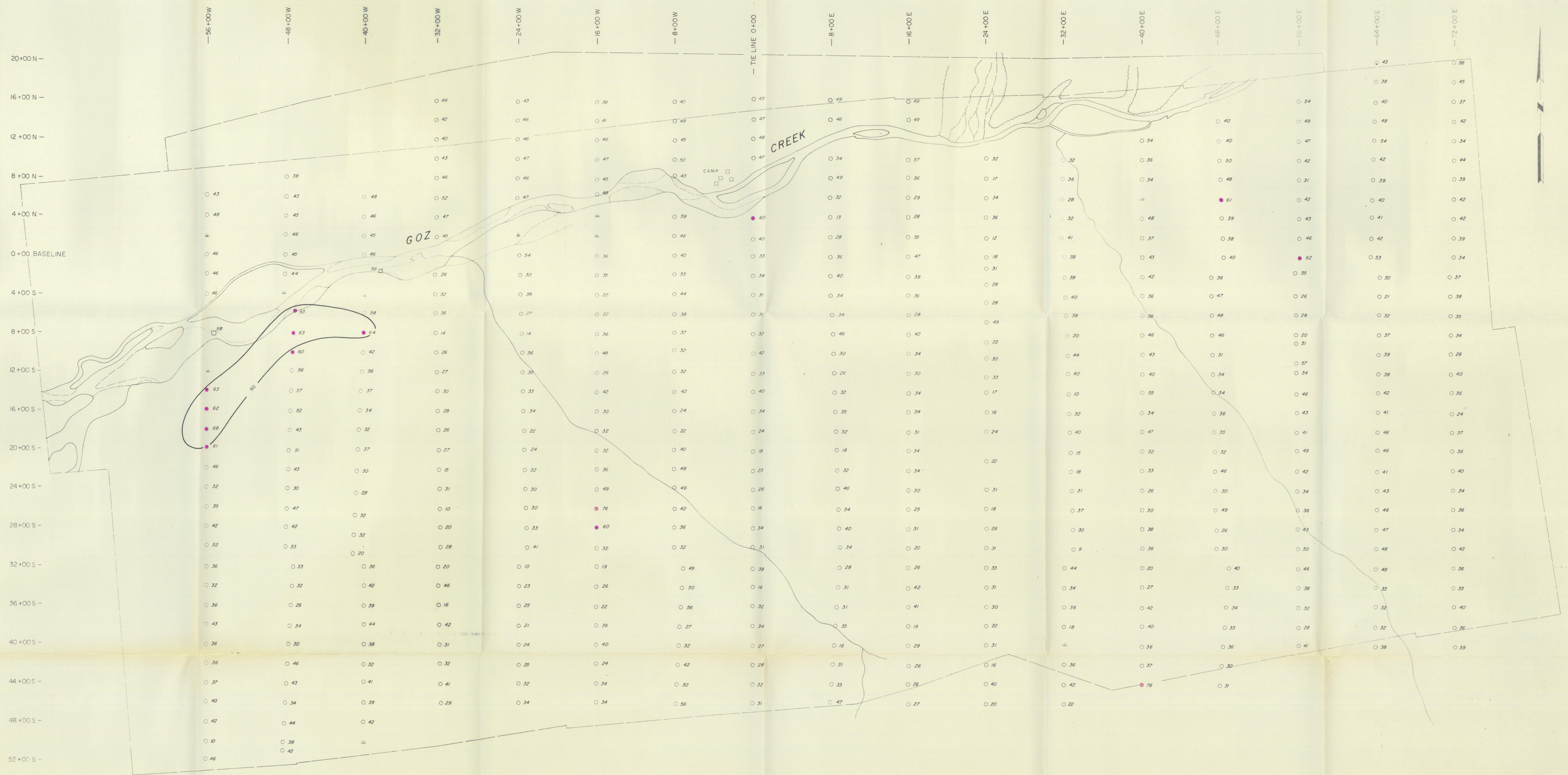
- SWAMP
  - STREAM SEDIMENT SAMPLE LOCATION
  - SOIL SAMPLE LOCATION
- | ZINC CONTENT |                                 |
|--------------|---------------------------------|
| ○            | BACKGROUND 0 To 129 ppm         |
| ○            | ABOVE BACKGROUND 130 To 309 ppm |
| ●            | POSSIBLE ANOMALY 310 To 399 ppm |
| ●            | PROBABLE ANOMALY 400 To 679 ppm |
| ●            | STRONG ANOMALY 680 + ppm        |

TOURNIGAN MINING EXPLORATIONS LTD.  
**ZINC CONTENT OF SOILS**  
 YK CLAIM GROUP  
 NADALEEN RIVER AREA (N.T.S. 106C)  
 MAYO MINING DISTRICT, YUKON TERRITORY

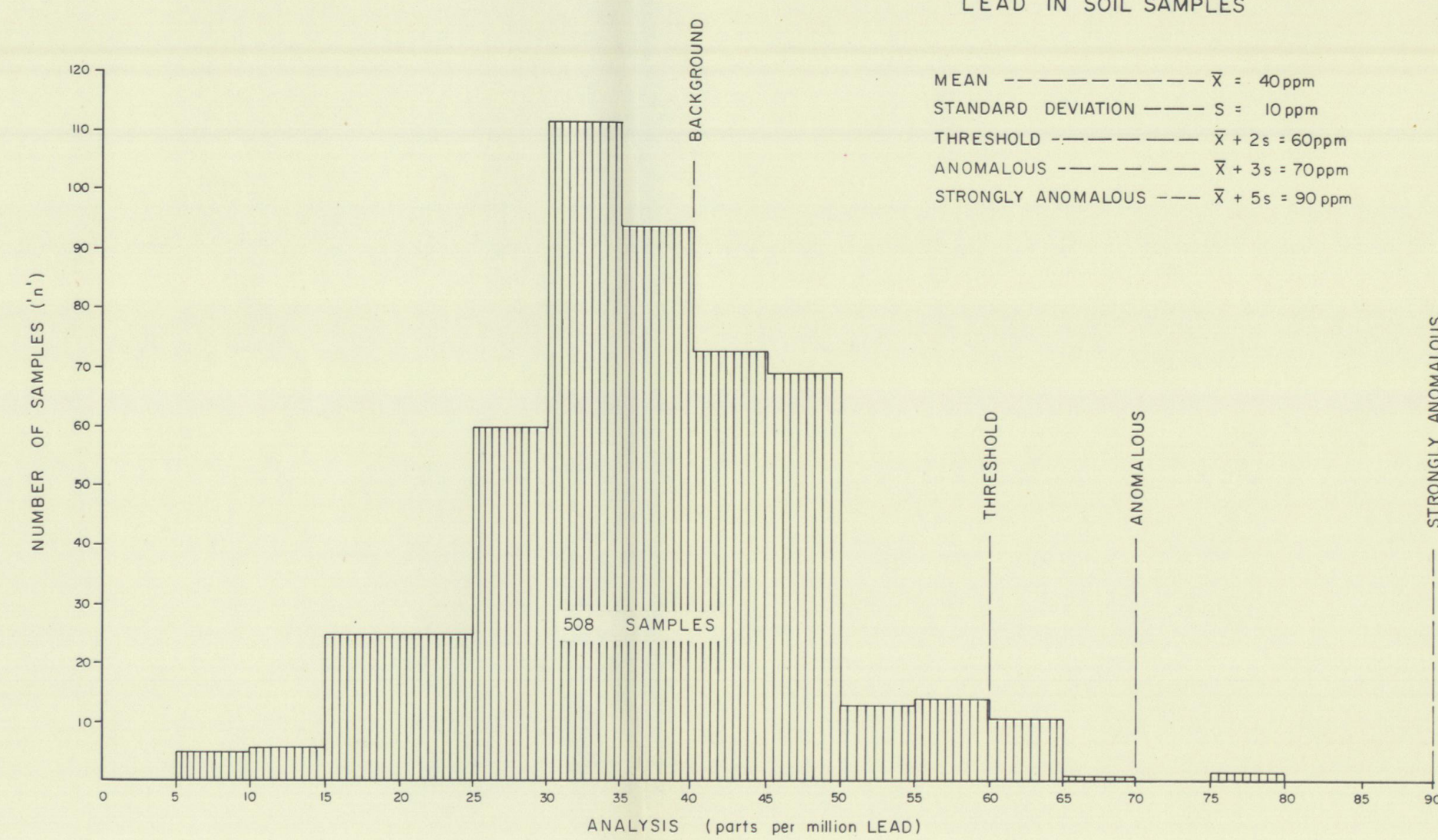


BY  
 CORDILLERAN ENGINEERING LTD.  
 1418 - 355 BURNARD STREET  
 VANCOUVER 1, B.C.  
 OCT. 1974





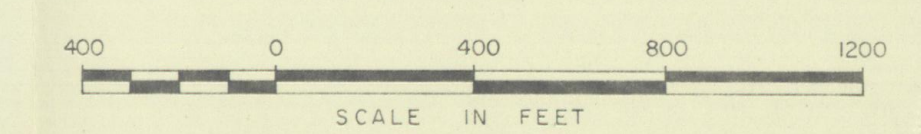
**Pb FREQUENCY DISTRIBUTION**  
LEAD IN SOIL SAMPLES



**EXPLANATION**

- SWAMP
  - STREAM SEDIMENT SAMPLE LOCATION
  - SOIL SAMPLE LOCATION
- | LEAD CONTENT |                               |
|--------------|-------------------------------|
| ○            | BACKGROUND 0 To 39 ppm        |
| ○            | ABOVE BACKGROUND 40 To 59 ppm |
| ●            | POSSIBLE ANOMALY 60 To 69 ppm |
| ●            | PROBABLE ANOMALY 70 To 89 ppm |
| ●            | STRONG ANOMALY 90 + ppm       |

TOURNIGAN MINING EXPLORATIONS LTD.  
**LEAD CONTENT OF SOILS**  
 YK CLAIM GROUP  
 NADALEEN RIVER AREA (N.T.S. 106C)  
 MAYO MINING DISTRICT, YUKON TERRITORY



BY  
 CORDILLERAN ENGINEERING LTD.  
 1418 - 355 BURNARD STREET  
 VANCOUVER 1, B.C.  
 OCT. 1974