

GEOLOGICAL AND GEOCHEMICAL EVALUATION

BLUE "L" MINERAL CLAIMS

Yukon Territory

Latitude : 62°42'N.

Longitude: 138°20' W.



N.T.S. 115-G-9



This report has been examined by the Geological Evaluation Unit and is recommended to the Commissioner to be considered as representation work in the amount of \$ 3513.64

*J.B. Craig*  
Resident Geologist or  
Resident Mining Engineer

Considered as representation work under Section 53 (4) Yukon Quartz Mining Act.

*[Signature]*  
Commissioner of Yukon Territory

By:

P. DEAN

DYNASTY EXPLORATIONS LIMITED

August, 1972

TABLE OF CONTENTS

LIST OF CLAIMS

LOCATION MAP

INTRODUCTION .....	1
GEOLOGY .....	2
TABLE OF FORMATIONS .....	3
DISCUSSION OF ROCK TYPES .....	4
ECONOMIC GEOLOGY .....	8
GEOCHEMISTRY .....	8
CONCLUSIONS AND RECOMMENDATIONS .....	11

Appendix I	-	Claim Map
Appendix II	-	Geology - 1": 1320 ft.
Appendix III	-	Geochem Values Map
Appendix IV	-	Geochem Values - Copper interpretation
Appendix V	-	Geochem Values - Lead interpretation
Appendix VI	-	Geochem Values - Zinc interpretation
Appendix VII	-	Rock Geochem Sample Locations
Appendix VIII	-	List of Personnel
Appendix IX	-	Summary of Costs
Appendix X	-	Affidavit Supporting Summary of Costs
Appendix XI	-	Vouchers Supporting Costs

COMPANY DYNASTY/ATLAS CLAIM BLUE L AREA VICTOR LOCATION N.T.S. 115-G-9

Claim No.	Grant No.	No. of Claims	Staked by	Recording Date	Transfer Information		Due Date	Assessment Work and Remarks
					To	Date		
1-8	Y60676-Y60683	8	D.M. Francis	May 27, 1971			Aug. 27, 1972	Payment of \$25.00 on each claim in lieu of assessment work to hold claims for 3 months each.
9-16	Y60684-Y60691	8	Donald Norberg	May 27, 1971			Aug. 27, 1972	
17-22	Y60717-Y60722	6	Donald Plaster	June 4, 1971			Sept. 4, 1972	

Refer to this map as: 115 G & F (E½) EDITION 1 ASE SERIES A 502

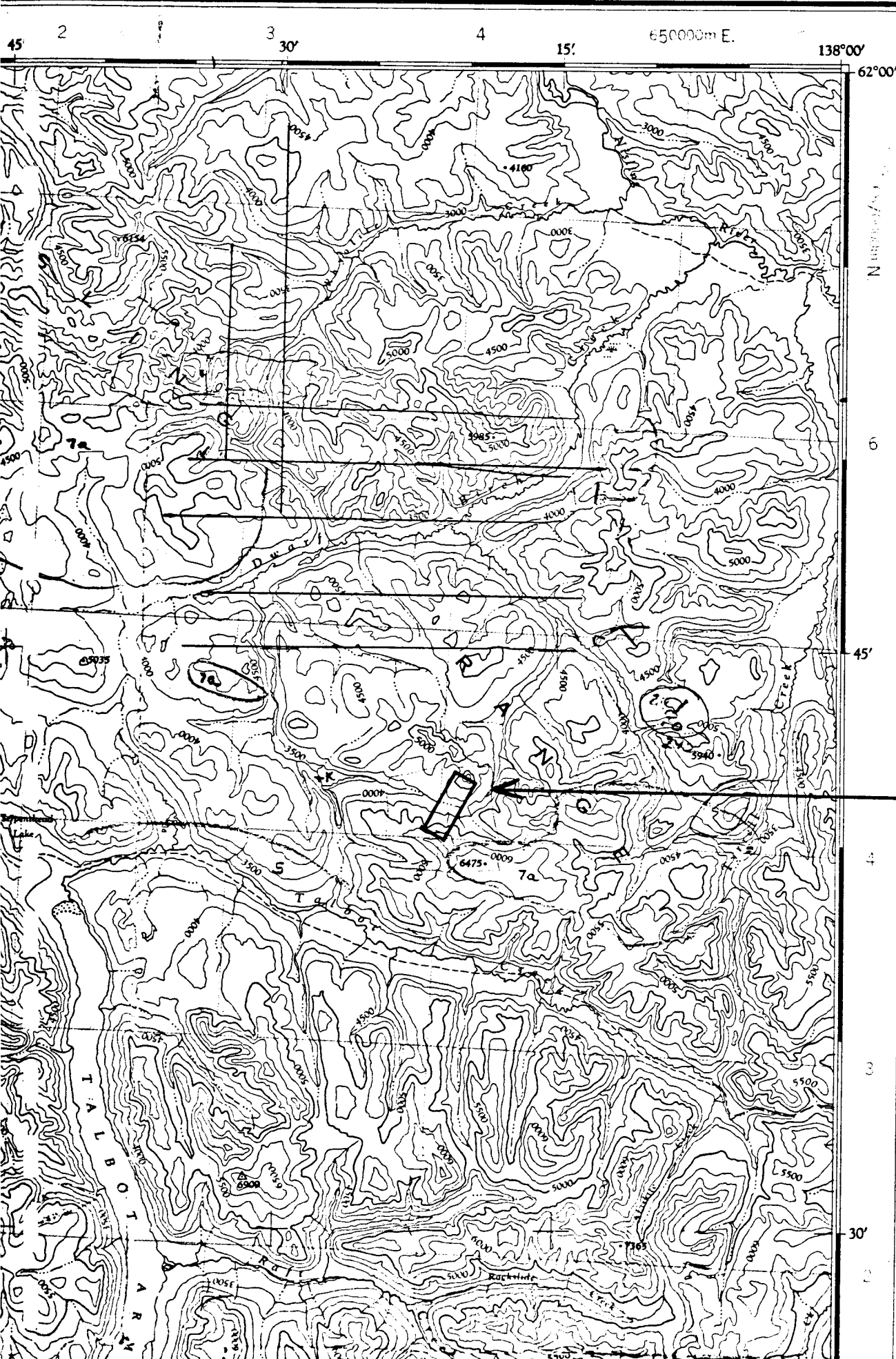


FIGURE 1:  
LOCATION  
OF  
BLUE L.  
CLAIMS

BLUE L.  
CLAIMS

WRITER  
IA

# DYNASTY EXPLORATIONS LIMITED

330 MARINE BUILDING  
355 BURRARD STREET  
VANCOUVER 1, B. C.

## GEOLOGICAL AND GEOCHEMICAL EVALUATION BLUE "L" MINERAL CLAIMS

### INTRODUCTION

The Blue L claims were staked to cover some geochemical anomalies discovered by Atlas Explorations during a regional silt sampling program carried out in 1970. The 1" to 1 mile scale geologic mapping that was done concurrently with the silt sampling indicated that the area of the claims was underlain by favourable Tertiary alaskite stocks and dikes intruding Yukon Group metasediments. Two breccia zones noted during the 1970 mapping were suspected of being breccia pipes such as are common in porphyry copper situations. (See report G.Pearse, 1971).

Two small showings were discovered in the area during 1970: one consisted of chalcopyrite and molybdenite on dry fractures within the alaskite, the other consisted of chalcopyrite in fractures in Yukon Group quartzite close to the alaskite contact. These small showings accounted for the anomalous samples on the southern part of the claims, but a belt of anomalous geochemistry extending north from the claim group remained to be explained.

To further evaluate this area of anomalous values, a more detailed mapping and geochemical program was carried out during July of this year. The claims and the surrounding area were mapped at a larger scale of 1":1320 ft. to obtain a better idea of the geologic setting. Contour and pace and compass soil sample lines were run over selected parts of the area to better outline the anomalies.

GEOLOGY (Figure 3)

The Blue L. claims are located in an area of mountains with a variation in relief of up to 2000 feet. In spite of this rugged topography, good outcrops are rare, and most rock exposures are of frost-fractured felsenmeer and talus. There are no outcrops in the valley bottoms which are covered by glacially transported alluvium.

The southern part of the claims area is underlain by part of a batholith size intrusion of biotite alaskite, which outcrops over a distance of at least 20 miles in an east-west direction. The northern part of the area, where most of our work was done, is underlain by Yukon Group metasediments which have been intruded by at least two phases of acid dikes and small stocks which are related to the alaskite pluton. Probably the alaskite extends under this northern area at a shallow depth. The youngest rocks which occur in the area are narrow basic dikes which cut both Yukon Group rocks and rocks of the Tertiary intrusive complex.

The area has been cut by faults in northerly and northwesterly directions. These occurred both during and later than the time emplacement of the Tertiary intrusions.



## DISCUSSION OF ROCK TYPES

### Unit 1

The oldest rocks outcropping in the area are a succession of quartzose metamorphosed sediments of complex internal structure and uncertain age. These "Yukon Complex" rocks are metamorphosed to at least the garnet grade, and this, along with intensive isoclinal folding and unclear stratigraphic relationships, suggests that they have suffered multiple phases of deformation. Probably rock units of various ages are included but, in general, these rocks are considered to be pre-Cambrian in age. Three main lithologies are present in the Blue L. area: quartzose mica schists and gneisses, finely laminated quartzite and coarse grained grey or white marble. The complex interval folding is evident in all these lithologies and all have a well developed foliation or lamination parallel to the axial planes of the isoclinal folds.

The schistose members, Unit 1a, is lowest in the sequence. It varies from a micaceous quartzite to a muscovite-biotite schist with about 50% quartz. In some places it takes on a gneissic texture, with biotite distributed in blebs throughout the quartz grains and with poor foliation. The more biotite rich schists contain occasional large poikilitic garnets enclosing abundant biotite.

The finely laminated quartzite member, Unit 1b, lacks the mica of Unit 1a, and is a much "cleaner" quartz rock. The major impurity in the rock is graphite, which is locally present in sufficient abundance to colour the rock black. The rock is characterized by very fine colour banding in various shades of grey, with individual bands about 1 millimeter to 1 centimeter in thickness.

Within the quartzite unit there are lenses of fairly pure crystalline marble. These lenses are up to 50 feet thick and the larger ones persist for a few thousand feet in length. The marble is white to grey in colour and retains the same colour on weathered surfaces. In many places the larger marble lenses are cut by veins of spongy quartz. The quartz veins are made up of angular cavities lined with euhedral quartz crystals. In some veins zones of coarse grained pinkish calcite and pale green flourite are present. The larger marble lenses occur close to the base of the quartzite unit.

## Unit 2

In the Blue L. area the Yukon Group rocks have been intruded by a small batholith of medium to coarse grained alaskite and by numerous finer grained dikes and small stocks related to this batholith. The rocks of this acid intrusive complex are almost totally lacking in mafic minerals, hence the name 'alaskite' rather than granite. The only mafic mineral that is present is biotite, and even it is lacking in most of the dikes. When present, it forms subhedral, shiny black plates of larger grain size than the quartz and feldspars. The dikes vary greatly in texture and silica content, in fact almost every dike is slightly different from its neighbours and to map in these slight variations would necessitate a very detailed scale of mapping. Only four different rock types were considered mappable at the scale of 1" to  $\frac{1}{4}$  mile. These consisted of:

- (a) medium to coarse grained alaskite of the main pluton;
- (b) fine grained alaskite to rhyolite which includes the contact zones of the pluton and also a variety of fine grained acidic rocks forming small stocks and the majority of the dikes;
- (c) quartz-feldspar porphyry, a variable, medium grained porphyritic derivative of the alaskite pluton which seems to be younger than the fine grained alaskite;
- (d) rhyolite-cemented breccias, which typically contain only Yukon Group quartzite fragments but sometimes contain fragments of alaskite or even

the quartz-feldspar porphyry. With the possible exception of "c", these four subdivisions of Unit 2 are not valid sub-units since they intergrade completely with one another and represent a single phase of intrusion.

Unit 2a is an equigranular rock composed almost totally of equant, partly resorbed grains of glassy quartz and blocky, euhedral crystals of feldspar. Occasional plates of black biotite may be present. The rock is usually very miarolitic and porous and weathers easily into rounded, gravelly lumps of a buff or tan colour. Green fluorite is occasionally present in miarolitic cavities. This rock type makes up the core of a batholith which outcrops under much of the southern part of the Blue L. claims, and extends for at least 20 miles in an east-west direction. The batholith has a flat or slightly undulating roof and vertical walls.

Unit 2b includes rocks which vary from fine grained, sugary textured aplite-like felsite dikes to spherulitic rhyolite dikes which were probably emplaced very close to the surface but the majority of the rocks in this category are merely finer grained versions of Unit 2a. They tend to be white to buff coloured, miarolitic and fine grained but not aphanitic. Some are slightly porphyritic with K-spar or quartz phenocrysts. These rocks make up the contact zones and uppermost part of the batholith, and also the majority of the stocks and dikes intruding the area.

Unit 2c consists of rocks similar in composition to the alaskite but distinguished in having a strongly porphyritic texture. Phenocrysts are of glassy, euhedral, doubly terminated quartz and white to pinkish, euhedral K-spar. Quartz phenocrysts are about 2 mm. in size, feldspar phenocrysts range up to about 1 cm. These are set in a fine grained to aphanitic, light grey to tan coloured matrix. These porphyries form two small round stocks

and numerous dikes in the Blue L. area. They intrude Yukon Group and also the fine grained alaskite which indicates that they are at least slightly younger in age than the majority of the acidic dikes. These rocks are sufficiently similar to the alaskite, however, that there can be no doubt that they are related to it, and are a later phase of the same intrusive complex.

Unit 2d breccias are composed predominantly of small angular fragments of Yukon Group quartzite set in a rhyolitic or siliceous matrix. Both alaskite and porphyry fragments occur in the breccias but neither are common. The breccia zones occur on the contacts of the alaskite intrusions. These breccia zones are previously mapped as "breccia pipes" but our more detailed mapping indicates that this mode of origin is unlikely. It is more probable that the breccias resulted when the brittle Yukon Group quartzites were fractured by the active intrusion of the alaskite dikes, and by the north-south faulting which occurred concurrently with the intrusive activity. All gradations in matrix to fragment ratio occur, from slightly fractured Yukon Group cemented by thin rhyolite seams, to a few quartzite fragments "floating" in the rhyolite dikes close to their contacts. No mineralization or alteration was found in the vicinity of any breccia zone.

The youngest rock found in the area, other than unconsolidated Quaternary sediments, is some small basic dikes. These dikes are fine grained to aphanitic, dark green to black in colour and are non-porphyritic. They form dikes which are usually less than five feet in thickness and cut both Yukon Group and Nisling alaskite rocks. These small dikes may be related to U. Tertiary basic lavas which occur outside the Blue L. map area.

## ECONOMIC GEOLOGY

The Blue L. claims appear to lie in a geologic environment potentially favourable for hypabyssal porphyry copper type mineralization but we found no evidence of economic mineral deposits or alteration. Occasional tiny grains of chalcopyrite are present in some of the alaskite dikes; this sparse mineralization is of no economic interest, but may explain some of the weakly anomalous copper geochem. Small rusty zones in Yukon Group rocks near the alaskite contacts account for the lead and zinc geochem, and also some of the copper geochem.

The Tertiary acidic rocks weather rusty, but this is probably mainly the result of biotite weathering. Because of the porous nature of the rocks, they weather deeply and rapidly. The "gossinous" appearance of these outcrops from the air is useful for reconnaissance mapping but is no indication of economic mineral potential.

## GEOCHEMISTRY

### (a) Soil Samples

The silt and soil sample anomalies discovered during the 1970 program were thoroughly investigated by additional soil sampling this year. Samples were taken at 200 ft. intervals along lines spaced 1000 ft. apart over all of the potentially favourable part of the Blue L. area. Samples were obtained by digging a small pit at each site with a mattock in order to reach the B and C soil horizons. In general, good quality samples could be obtained from the "C" horizon but some sites could not be sampled because of talus or deep volcanic ash. The "B" soil horizon is poorly developed throughout the area and no attempt was made to differentiate it from the "C" horizon.

The -80 mesh fraction of the samples were analyzed for copper, lead and zinc using the  $\text{HClO}_4$  extraction method. The analytical work was done by Bondar-Clegg Laboratories Ltd., at their lab in Whitehorse. The results have been plotted at a scale of 1:1320 (Figure 4).

Threshold values for the three elements were obtained by a visual inspection of the data. The background range of values (which includes about 80% of the samples taken), the threshold value and the maximum value obtained are indicated in Table 1.

	<u>Background Range</u>	<u>Threshold</u>	<u>Maximum</u>
Copper	20-35 ppm	50 ppm	200 ppm
Lead	15-30 ppm	40 ppm	230 ppm
Zinc	90-140 ppm	200 ppm	1840 ppm

Anomalous samples in all the elements occur most abundantly in a belt along the periphery of the batholith contact, in the area of most intensive dike intrusion. A weak zoning is apparent, with samples anomalous in lead and zinc lying farther from the batholith contact than those anomalous in copper.

The anomalous copper values (Figure 5) are generally of low magnitude and the widely distributed, erratic pattern suggests many small sources rather than one single zone of origin that might have economic potential.

The anomalous lead and zinc samples (Figures 6 and 7) are also widely distributed but the most intensely anomalous samples correspond in part to a bed of marble that crosses the area. Skarn zones were noted in this marble during the

course of mapping and these could be the source of the lead and zinc, although no mineralization was actually seen at the time. There are also small rusty zones in the Yukon Group schists close to all the contacts and these are also a likely source of some of the Pb-Zn geochem. Similar zones in other parts of the Nisling Range are well mineralized with lead and zinc, but always these zones are very small in extent. No galena or sphalerite was noted in the zones in the Blue L. area but they received only a brief examination at the time.

Since some of the zinc values are quite high, it may be worthwhile to track down the source exactly. This should only require about a day.

In summary, the soil sample survey failed to outline any zone of mineralization that could have economic potential.

(b) Rock Geochem

A few rock samples were analyzed geochemically in order to determine background values for copper in the alaskite rocks. Table 2 is a list of the samples and the values obtained.

<u>Sample Number</u>	<u>Description</u>	<u>Value</u>
1010	Alaskite stock	4 ppm copper
1020	Alaskite stock	2
1026	Alaskite dike	2
1027	Alaskite dike	40
1056	Alaskite stock	6
1070	Alaskite dike	16
1081	Breccia	4
1088	Alaskite stock	3
1090	Breccia	3
1093	Alaskite stock	3

The locations of the samples are shown in Figure 8.

There seems to be no significant difference in the copper content between the dikes and the main alaskite batholith, values in both are surprisingly low. The one moderately high value of 40 ppm is at the top of a creek basin from which anomalous silts and soils were obtained.

One sample of a quartz-carbonate-fluorite vein that was analyzed yielded the following values: Cu- 2 ppm; Aug - 0.6 ppm; Mo - 2 ppm; Au - 5 ppb.

CONCLUSIONS AND RECOMMENDATIONS

The Blue L. area has been examined geologically and geochemically without outlining any zones of potentially economic mineralization. The spotty geochem anomalies that occur in the area can be adequately explained by the presence of very small, contact-related mineral occurrences.

The area encompassed by this report has now been covered in sufficient detail as to virtually eliminate any possibility of economic mineral deposits and, therefore, the claims should be allowed to lapse at the end of one year.

Respectfully submitted,

*P. Dean*

P. Dean,  
Geologist

August, 1972



*[Handwritten signature]*

BLUE L.  
CLAIM GROUP

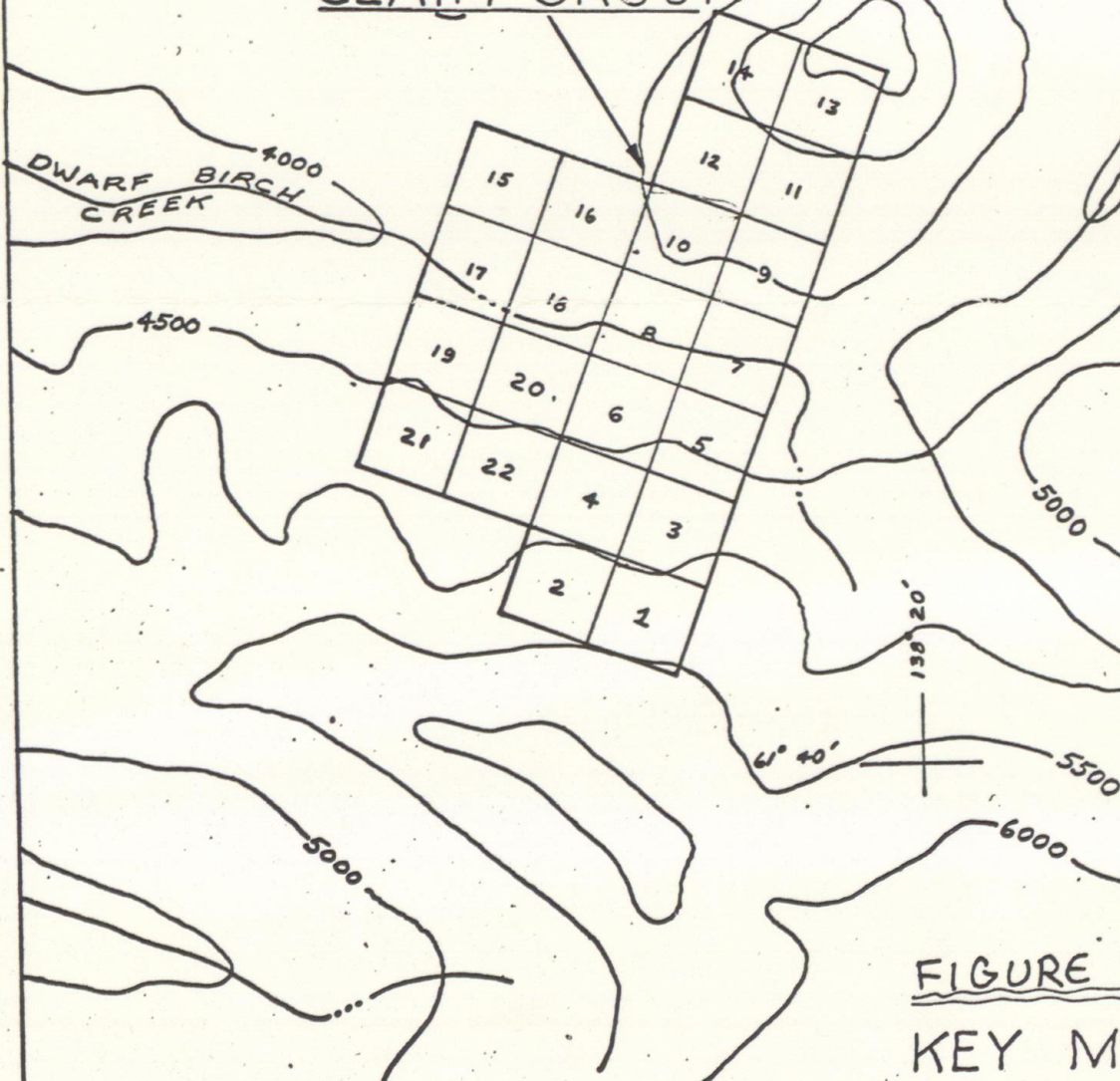


FIGURE 2

KEY MAP

BLUE L. CLAIMS 115 G/9

SCALE : 1" = 1/2 MILE

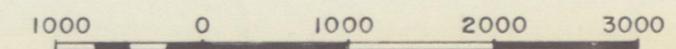
CLAIMS  
BLUE L. 1-8  
BLUE L. 9-16  
BLUE L. 17-22

STAKED BY  
D. M. FRANCIS  
D. V. NORBERG  
D. PLASTER

LEGEND

- CONTACTS ———— ?-?-?
- OUTCROPS ———— ○ ○ ○
- BRECCIA ———— △△△
- VLEN ———— ~~~~~
- BEDDING ———— / / /
- SULPHIDE OCCURANCE ———— x
- CLAIM GROUP OUTLINE ———— [ ]

GEOLOGY BY P.DEAN JULY 1972



SCALE: 1" = 1320'

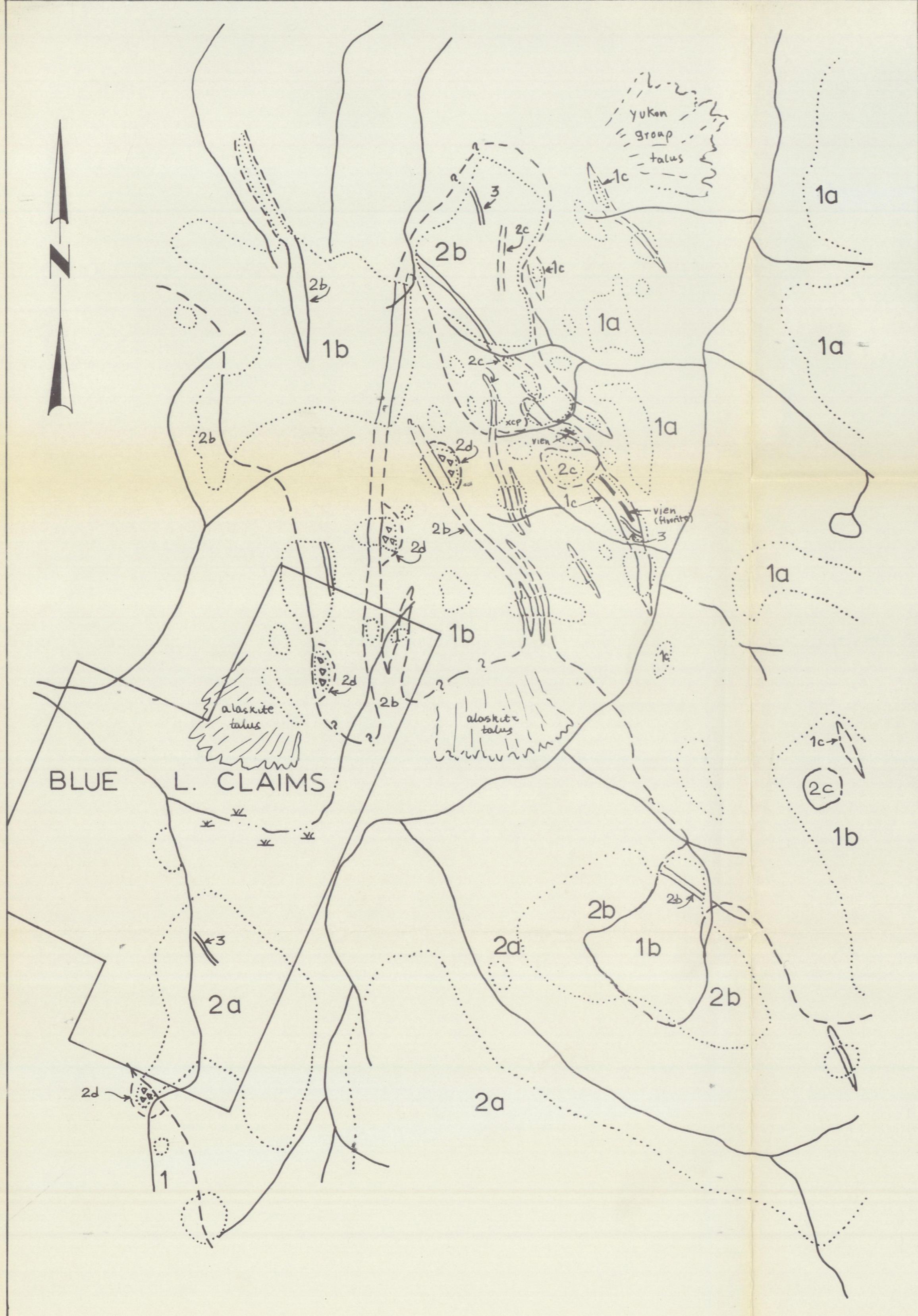


TABLE OF GEOLOGIC FORMATIONS

TERTIARY	3	Basic dikes	
			2d (931) Rhyolite cemented breccia
TERTIARY or U. CRETACEOUS	2	Nisling Range acid intrusive complex	2c (924) Quartz-Feldspar porphyry
			2b (918) Rhyolite and fine grained alaskite
			2a (918) Medium to coarse grained alaskite
L. PALEOZOIC or PRECAMBRIAN	1	Yukon Group metamorphic complex	1c (906) Coarse grained marble
			1b (941) Pure laminated quartzite
			1a (940) Quartz mica schist to micaceous quartzite quartz-bio gneiss

DYNASTY EXPLORATIONS LTD.

Victor O.E.X. Project

BLUE L. CLAIMS

GEOCHEMISTRY VALUES MAP

LEGEND

SOIL SAMPLE SITE ——— • Cu · Pb · Zn

CLAIM GROUP OUTLINE ———

SAMPLES ANALYZED USING HClO<sub>4</sub>  
EXTRACTION BY BONDAR-CLEGG &  
COMPANY LTD., WHITEHORSE, Y. T.  
AUGUST 1972

1000 0 1000 2000 3000

SCALE: 1" = 1320'







# DYNASTY EXPLORATIONS LTD.

Victor O.E.X. Project

BLUE L. CLAIMS

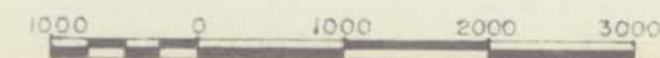
## GEOCHEMISTRY VALUES MAP

### LEGEND

SOIL SAMPLE SITE ——— • Cu · Pb · Zn

CLAIM GROUP OUTLINE ———

SAMPLES ANALYZED USING  $HClO_4$   
EXTRACTION BY BONDAR-CLEGG &  
COMPANY LTD., WHITEHORSE, Y T  
AUGUST 1972

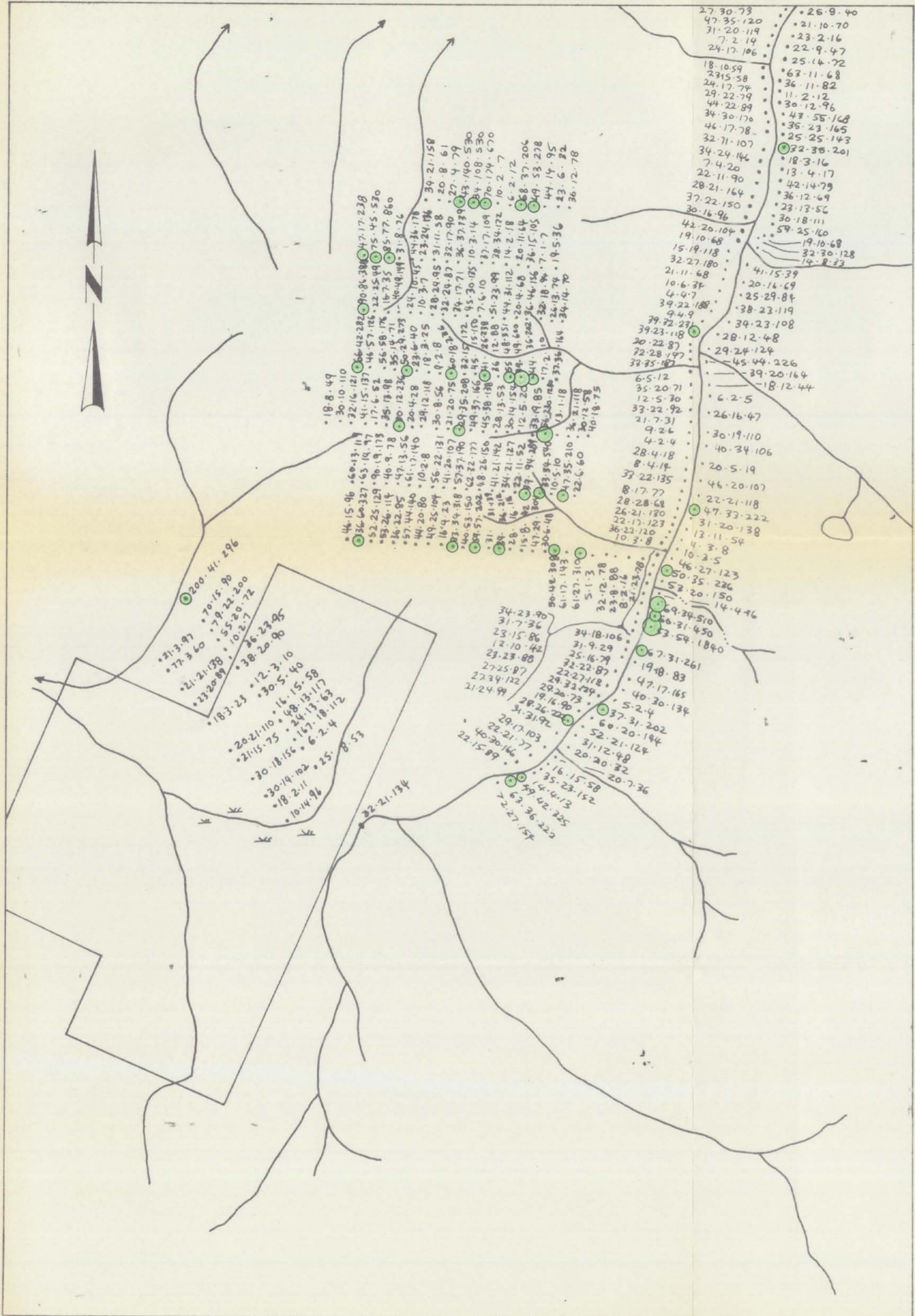


SCALE: 1" = 1320'

FIGURE 7

### ZINC

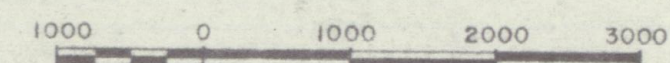
- > 200 > 500 PPM
- > 500 > 1000 PPM
- > 1000 PPM



LEGEND

CONTACTS	— — — — — ?-?-?-?
OUTCROPS	○ ○ ○ ○ ○
BRECCIA	△△△
VIEN	— — — — —
BEDDING	— — — — —
SULPHIDE OCCURANCE	x
CLAIM GROUP OUTLINE	□

GEOLOGY BY P.DEAN JULY 1972



SCALE: 1" = 1320'

FIGURE 8

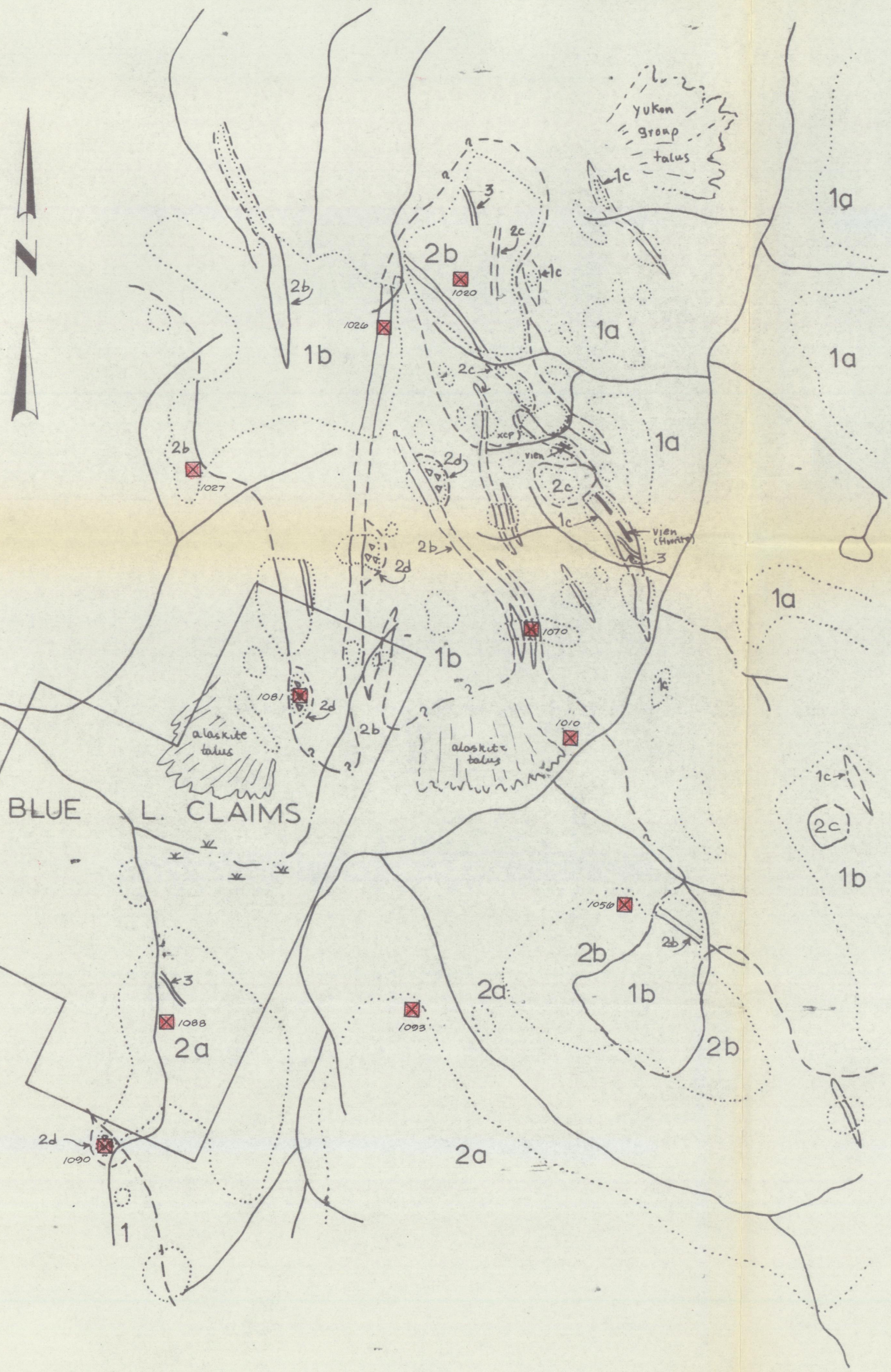
ROCK CHIP SAMPLES

	VALUES
☒ LOCATION	1010 - 4 PPM Cu
	1020 - 2
	1026 - 2
	1027 - 40
	1056 - 6
	1070 - 16
	1081 - 4
	1088 - 3
	1090 - 3
	1093 - 3

- 3 -

TABLE OF GEOLOGIC FORMATIONS

TERTIARY	3	Basic dikes	
			( 2d ) Rhyolite cemented breccia (931)
			( 2c ) Quartz-Feldspar porphyry (924)
TERTIARY or U. CRETACEOUS	2	Nisling Range acid intrusive complex	( 2b ) Rhyolite and fine grained alaskite (918)
			( 2a ) Medium to coarse grained alaskite (918)
L. PALEOZOIC or PRECAMBRIAN	1	Yukon Group metamorphic complex	( 1c ) Coarse grained marble (906)
			( 1b ) Pure laminated quartzite (941)
			( 1a ) Quartz mica schist to micaceous quartzite quartz-bio gneiss (940)



LIST OF PERSONNEL

P. Dean	Party Chief	Vancouver, B.C.
W. Tompson	Field Assistant	Vancouver, B.C.

SUMMARY OF COSTSBLUE L. CLAIMS

	<u>Schedule</u>	<u>Total</u>	<u>Geology</u>	<u>Geochem</u>	<u>Camp</u>	<u>Rotary Wing</u>
Wages - General	"A"	\$ 784.00	\$505.80	\$278.20	\$	\$
- Report Writing	"B"	144.52	72.26	72.26		
Assays	"C"	404.52	-	404.52		
Field Expenses	"C"	<u>1,709.08</u>	<u>          </u>	<u>          </u>	<u>794.40</u>	<u>914.68</u>
		\$3,042.12	\$578.06	\$754.98	\$794.40	\$ 914.68
Expediting - 5%		<u>152.10</u>	<u>28.90</u>	<u>37.75</u>	<u>39.72</u>	<u>45.73</u>
		\$3,194.22	\$606.96	\$792.73	\$834.12	\$ 960.41
Administration - 10%		<u>319.42</u>	<u>60.70</u>	<u>79.27</u>	<u>83.41</u>	<u>96.04</u>
		<u>\$3,513.64</u>	<u>\$667.66</u>	<u>\$872.00</u>	<u>\$917.53</u>	<u>\$1,056.45</u>

# DYNASTY EXPLORATIONS LIMITED

330 MARINE BUILDING  
355 BURRARD STREET  
VANCOUVER 1, B. C.

## AFFIDAVIS SUPPORTING SUMMARY OF COSTS

I, CLIFFORD MALISH, Accountant, Dynasty Explorations Limited, of Vancouver, British Columbia, do hereby state that, to the best of my knowledge and belief, the statement of costs presented in this report (Geological and Geochemical Evaluation Blue "L" Mineral Claims) is both correct and true.

  
Clifford Malish

Aug 23, 1972  
Date

  
Notary Public in and for  
Yukon Territory

BLUE "L" CLAIM WAGE SUMMARY

SCHEDULE A

	TOTAL	GEOLOGY	GEOCHEM
P. DEAN	\$ 451.61	\$ 451.61	
W. TOMPSON	248.39		\$ 248.39
	<u>\$ 700.00</u>	<u>\$ 451.61</u>	<u>\$ 248.39</u>
12% N. W. L. C.	84.00	54.19	29.81
	<u><u>\$ 784.00</u></u>	<u><u>\$ 505.80</u></u>	<u><u>\$ 278.20</u></u>



NAME WILL TOMPSON  
 TYPE OF WORK FIELD ASSISTANT  
 RATE OF PAY \$550/month

DATE	WORK	OFF	FLD. BNS.	CODING	EXPLANATIONS
	✓				
	✓				
3	✓				CED PROJECT
	✓				
6	✓				
	✓				
9	✓				
	✓				
12	✓				BLUES
	✓				
15	✓				NISLING PROJECT
	✓				GEOCHEM
18	✓				
	✓				
21	✓				
	✓				
24	✓				VICTOR UX
	✓				
27	✓				
	✓				
30	✓				
	✓				
31	✓				

PAYROLL DEPT. USE ONLY		
1	@	550.00
	@	
	@	550.00
GROSS BEFORE BOARD		
31 @ 2.50	BOARD	77.50
GROSS EARNINGS		<u>627.50</u>
DEDUCTIONS		
1) CANADA PENSION		10.40
2)		
3) INCOME TAX		123.00
4) GROUP		
5) M.S.A.		
6) ACCTS. REC.		50.00 (advance from P. Deon)
7)		
8) BOARD		77.50
9)		
10) U.I.C.		5.65
11) MID MONTH ADVANCE		266.55
NET PAY		<u>360.95</u>

TOTAL 31 PAYROLL DEPT. USE ONLY

- LABOUR CODING
- 01 PROPERTY EXAMINATION
  - 02 PROSPECTING
  - 03 STAKING
  - 04 AIRBORN SURVEYS
  - 05 LINE CUTTING
  - 06 GEOLOGY
  - 07 GEOPHYSICS
  - 08 GEOCHEMISTRY
  - 09 DIAMOND DRILLING
  - 10 PHYSICAL WORK
  - 11 ACCESS ROADS
  - 21 CAMP OPERATIONS
  - 1-01 VANC. OFFICE - ADMIN.
  - 2-01 VANC. EXPLORATION OFFICE
  - 93-01 WHITE HORSE BASE
  - 94-01 ROSS RIVER BASE
  - 5-01 GEOCHEM. LAB.
  - 6-01 BULLDOZER

PROJECT	DAYS	GROSS BEFORE BOARD	FIELD BONUS
211-848	4	70.97	
81-815	27	479.03	
81-815	(14)	(248.39)	
81-846	14	248.39	
	31	550.00	

17.742

APPROVED P. Deon

EMPLOYEE \_\_\_\_\_

BLUE L REPORT WRITING

SCHEDULE B

	TOTAL	GEOLOGY	GEOCHEM
P. DEAN. (4 days @ 32.26)	129.04	64.52	64.52
N.W.L.C @ 12%	15.48	7.74	7.74
	<u>124.52</u>	<u>72.26</u>	<u>72.26</u>

BLUE "L" EXPENSE SUMMARY

SCHOOL "C"

SUPPLIER	TOTAL	ASSAYS	GROCERIES	FIELD SUPPLIES	LOCAL FREIGHT + TRANSPORTATION	FIXED WIND	ROTARY WIND
ARCTIC RENT A CAR	4481				4481		
THE BAY	1598			1598			
BEAVER LUMBER	716			716			
BONDOR CLEGG	40450	40450					
CANADIAN PROPANE	4885			4885			
EDGEWATER HOTEL	4930		4930				
HOUGENS	5872			5872			
MACLURE'S	705				705		
MISC.	5269		4111	458	700		
NELSONS	2539			2539			
NEW NORTH	6700				6700		
RECEIVER GENERAL + AGS	2000			2000			
TAYLOR + DRYRY	23505		23505				
T.N.T.A.	91468						91468
WHITE PASS	575			575			
YUKON AUTO RENTALS	13073				13073		
YUKON EXPLOSIVES	2592			2592			
	211358	40450	32546	21235	25659		91468
				79440			

SCOT  
VICTOR OEX

REPAIRED  
X

LOCATION A PAYER PAR  
MR. J. S. BROCK.  
MR. REG. DAVIS.  
5555 NEWTON ROAD.  
3029 PROCTER BLVD.  
VANC. B.C.

FLAS RENTAL SYSTEMS 90 04L  
ST AVENUE & ELLIOTT STREET  
NITEHORSE YUKON  
PHONE 403 667 2400  
STATION CODE 39715

21. MVA NO. #9  
LIC. NO. 40 82  
PROV. BC  
OWNING CITY & CODE. HOODE  
LH 11-4485

3. IDENTIFICATION  
AVIS OTH. AUT. PLEASE SPECIFY  
4. CRED. CLUB AUTH. C  
5. CAR WILL BE RETURNED TO VOITURE RETOURNEE A  
6. CAR WILL BE RETURNED C VOITURE RETOURNEE LE  
7. LOCAL CONTACT - ADRESSE LOCALE  
8. DRIVER'S LIC. NO. - PERMIS DE CONDUIRE  
9. PROVINCE  
10. EXPIRY DATE D'EXPIRATH  
11. HOME ADDRESS - DOMICILE  
TEL.

12. ADDITIONAL INFORMATION AND SPECIAL CONDITIONS  
RENSEIGNEMENTS ADDITIONNELS ET CONDITIONS SPECIALES

MINIMUM CHARGE - ONE DAY PLUS MILEAGE  
FRAIS MINIMUM - UNE JOURNEE PLUS MILLAGE

13. THE LESSOR HEREBY LEASES TO THE RENTER BELOW INDICATED. UPON THE COVER TERMS AND CONDITIONS ON THE REVERSE SIDE HEREOF, THE MOTOR VEHICLE DESCR HEREON.  
LE LOCATEUR LOUE PAR LES PRESENTES AU LOCATAIRE DONT LE NOM FIGURE CI-DE LE VEHICULE MOTORISE ICI DECRIE. MOYENNANT LES ENGAGEMENTS ET LES COND STIPULES AU VERSO DES PRESENTES.

X *[Signature]* AVI  
THIS IS YOUR COPY. RETURN TO THE RENTER.  
CECI EST VOTRE FACTURE. PAIEMENT DO SUR RECEP

*[Signature]*  
39715

PLEASE DETACH AND RETURN THIS STUB WITH PAYMENT  
VEUILLEZ DETACHER ET RETOURNER CE TALON AVEC VOTRE

DYNASTY EXHIBITION  
355 BURKARD ST. STE 3  
VANC. B.C.  
AVIS 612468-901 Ex

MAKE CHEQUE PAYABLE TO  
REMISE PAYABLE A  
224-721-1-01  
INVOICE

Foto 8  
CE) 8  
SCOT 8  
VICTOR OEX 89.62

24. MILES IN RETOUR 13332  
25. MILES OUT 11941  
26. MILES DRIVEN 1391 @ 18 = 25038  
27. HOURS 4.00  
28. DAYS 4 @ 16.00 = 6400  
29. WEEKS 1 @ 80.00 = 8000  
30. @  
31. TOTAL LINES 39438  
32. MARKET SURVEY ONLY  
33. TRAV. AGT YES 20%  
34. TIME & MILEAGE CHGE. 31551  
35. INTERCITY FEE QUOTED AND/OR MIS. 2500  
36. COLLISION DAMAGE WAIVER (CDW) 34051  
37. ASSURANCE FRANCHISE 1800  
38. SAFE TRIP INSURANCE 35851  
39. TAX - TAXE  
40. EN APPOSANT SES INITIALS LE LOCATEUR...  
41. GASOLINE ESSENCE  
42. TOT CHGE COUT TOTAL 35851  
43. DEPOSITS - DEPOTS  
44. NET CHGE COUT NET 35851  
45. D. B. R. NO. \$  
46. AM'T. DUE MONTANT DU CASH COMPT. 35851  
47. REFUND FROM REMBOURSEMENT DE TRAVEL AGENT X  
48. INTERCITY SPLIT  
RENTING STATION CODE 39715  
STATION

CORRECTED COMPUTATION STICKER - SORRY WE GOOFED!  
SOUCHE DES CALCULS CORRIGES - EXCUSEZ L'ERREUR!

RENTAL AGREEMENT CONTRACT NO. C961634

archi Rent a Car.

the Bay

10265-28

DEPT. NO.	AUTH. OF SALE	TELEPHONE	
ACCOUNT NO. CASH SALE			
NAME charge 1/2 NISLING			
ADDRESS 1/2 AHO PROJECT			
DEL. INST.		APT. NO.	
WHERE A.P. OR S.T. IS CHECKED BY PURCHASE IS MADE UNDER MY MASTER AGREEMENT OF THIS TYPE.			
CASH	CHG.	A.P.	S.T.
<input checked="" type="checkbox"/>	<input type="checkbox"/>	<input type="checkbox"/>	<input type="checkbox"/>
DEPT. NO.	CLERK	DATE	AMOUNT
10265-28		4/7	
2 MATTRESSES		EACH	AMOUNT
			@ 1598 3196
CUSTOMER'S SIGNATURE			TOTAL
Hudson's Bay Company			TOTAL 3196
DEPT. NO.	CLERK	DATE	AMOUNT
		/	

the Bay

10265-28

CASH SEND RECEIPT

BLUE L

1598



PHONE 667-2631

270-00908

2281 - 2nd AVENUE WHITEHORSE, YUKON T.

BEAVER LUMBER COMPANY LIMITED

SOLD TO <i>Kymasly Enslor</i>						DELIVER TO									
YOUR ORDER NO.				ACCOUNT NO.				DATE ORDERED <i>July 4-72</i>				TELEPHONE NUMBER			
TAKEN <input type="checkbox"/>		DELIVER <input type="checkbox"/>		MATERIAL RETURNED <input type="checkbox"/>		CASH <input type="checkbox"/>		C.O.D. <input type="checkbox"/>		APPROVED CHARGE PAYABLE ON RECEIPT OF STATEMENT. <input type="checkbox"/>		BUDGET PLAN (BLACO) <input type="checkbox"/>		SOLD BY	
QUANTITY ORDERED	✓	SIZE & LENGTH	GRADE & KIND			FOOTAGE			PRICE	AMOUNT					
<i>1</i>		<i>4x8x14</i>	<i>GIS.</i>							<i>7.16</i>					
		<i>change Nisling Proj.</i>													
		<i>Pay</i>													
TERMS NET PAYABLE ON RECEIPT OF STATEMENT.												PROV. SALES TAX			
OVERDUE ACCOUNTS ARE SUBJECT TO A SERVICE CHARGE.												CARTAGE			
SALES SLIP MUST ACCOMPANY ALL RETURNED GOODS.												TOTAL <i>7.16</i>			
GOODS RETURNED WILL BE SUBJECT TO A 10% HANDLING CHARGE.												E. & O. E.			
PURCHASER'S SIGNATURE						ORDER FILLED		SHIPPER		DRIVER		BILLING			

FORM 102 MOORE BUSINESS FORMS LTD.

MAR. 1972



BONDAR-CLEGG & COMPANY LTD.

geochemists • assayers • analytical chemists

768 A BELFAST ROAD (M.R. 1), OTTAWA 8, ONTARIO  
PHONE: 237-3110

TELEX: 013-3548

• Dynasty Explorations,  
330 - 355 Burrard St.,  
Vancouver 1, B.C.

INVOICE: **8819**

DATE: August 23, 1972

REPORT NO: 42-57.

PROJECT:

---

8	Au Analysis	@ \$3.00	<u>\$24.00</u>
		TOTAL	<u><u>\$24.00</u></u>

BLUZE L 3.00  
VICTOR OEX 21.00



BONDAR-CLEGG & COMPANY LTD.

geochemists • assayers • analytical chemists

768 A BELFAST ROAD (M.R. 1), OTTAWA 8, ONTARIO

PHONE: 237-3110

TELEX: 013-3548

Dynasty Explorations,  
330 - 355 Burrard St.,  
Vancouver 1, B.C.

INVOICE: 4994

DATE: August 14, 1972

REPORT NO: 42-57

PROJECT:

779	Cu Analysis	@ \$1.00	\$779.00
749	Pb,Zn Analysis	@ \$1.00	749.00
8	Ag Analysis	@ \$0.50	4.00
1	Mo Analysis	@ \$1.00	1.00
727	Sample Preparation (soils)	@ \$0.20	145.40
52	Sample Preparation (rocks)	@ \$0.75	<u>39.00</u>
	TOTAL		<u><u>\$1,717.40</u></u>

Blue L

401.50

VICTOR CEX

1315.90





PHONE 667-4222 - 305 MAIN STREET

07-3211



# HOUGEN'S

5 2010

WHITEHORSE, YUKON BRANCH: FARO, YUKON

675 411  
DUALIST EXPLORATION  
MILKING

DEPT. No. DATE 7/1

WHERE BUDGET OR CONTRACT IS CHECKED MY PURCHASE IS MADE UNDER MY MASTER AGREEMENT OF THAT TYPE.

DEPT. No.	CLERK	CASH	CHARGE	BUDGET	CONTRACT	C.O.D.

EACH	MOSE. CODE	AMOUNT
1.		
2.		31.90
3.		
4.		
5.		
6.		
7.		
8.		
9.		31.90
10.		
X		
CUST. SIGNATURE		AMOUNT

# PAID

214-815

319

28.71

AMOUNT

ACCOUNT DUE 15th OF FOLLOWING MONTH.  
1 1/2% PER MONTH ON PAST DUE BALANCE.

TOTAL 58.72

PHONE 667-4222 - 305 MAIN STREET

07-265



# HOUGEN'S

5 2010

WHITEHORSE, YUKON BRANCH: FARO, YUKON

DEL. INST. DATE  
YOUR P.O. No.

WHERE BUDGET OR CONTRACT IS CHECKED MY PURCHASE IS MADE UNDER MY MASTER AGREEMENT OF THAT TYPE.

DEPT. No.	CLERK	CASH	CHARGE	BUDGET	CONTRACT	C.O.D.

EACH	MOSE. CODE	AMOUNT
1.		
2.		
3.		
4.		214-815
5.		
6.		
7.		214-815
8.		213-843
9.		213-843
10.		
X		
CUSTOMER'S SIGNATURE		AMOUNT

# PAID

ACCOUNT DUE 15th OF FOLLOWING MONTH.  
1 1/2% PER MONTH ON PAST DUE BALANCE.

TOTAL 77.3

**MACLURE'S CAB**  
1510 WEST 3rd AVENUE • VANCOUVER  
Office 731-4014 Taxi Service  
24 HOUR SERVICE

Name of Ship

*Dynasty Exploration*

From

*1011 Beach, Airport*

Date

*July 4 1972*

TO

Time Out

*11:59*

Time In

*11:33*

Driver

*R. Black*

CHARGE TO

*Dynasty Exp #540*

AMOUNT \$

*7.05*

Signed

*R. MacLure*

*222-845*

*Brenda Dean* ✓

NISLING

5192 \$02.85 — 4  
\$02.85 <sup>502</sup>TOTL —

W. H. H. Village  
1972

- 5 JUL 72

Thank You

\* 0.001.25 T

• 5 0.001.25

✓ 3900 5 Jul 72

TAYLOR & DRURY  
HARDWARE #9

CHECK IDENTIFICATION

# 5.95  
CHECK NO.

DATE	SERVER	TABLE NO.	PERSC
July 5/72	Sh		3

217514

Thank You  
#1

JUL -6-72 000 0113

A III \*\*01.39

A III \*\*01.39

A III \*\*01.39

A III \*\*01.39

S A \*\*05.56

TL A \*\*05.56

SUPER-VALU  
#80

Date July 6 1972

SOLD BY	C.O.D.	CHARGE	ON ACCT.	ACCT. F.W.D.
1				
2	Das			7.00
3		10 gal		
4				
5		PAT		
6				
7				
8				
9				
10				
11		NISLING		
12				
13				
14				7.00
15				

40

MOORE BUSINESS FORMS LTD.

19.75

No. \_\_\_\_\_ July 4 1972

Received from (Twenty five 50 Dollars

100

D.C.S.D [Signature]

THE "202"  
202 STEELE ST.  
WHITEHORSE, Y.I.

**HORWOOD'S  
OFFICE SUPPLY**

0 004.08 782

0 000.49 782

0 000.49 782

0 001.60 782

0 000.50 782

0 000.50 782

0 000.50 782

JUL. 4.72

PHONE 667-4357

YOUR RECEIPT  
THANK YOU

- 5 JUL 72

\$00.50 — 3

9250 \$00.50 CASH

TOTAL 30.08

PLUMBING — HEATING — AIR CO' TIONING

PET SUPP — SELF-SERVICE — SUPER HARDWARE



# NELSON'S LIMITED

P.O. BOX 10 — PHONE 667-2347

WHITEHORSE, YUKON

SOLD TO Dynasty Exploration DATE July 4/72  
SHIP TO \_\_\_\_\_

PURCHASE ORDER NO.		SALESMAN	DEPT.	CASH <input type="checkbox"/> CHARGE <input checked="" type="checkbox"/> C.O.D. <input type="checkbox"/>			VIA
QUANTITY					UNIT	AMOUNT	
1	rod					7.90	
1	Prospector's pick					11.39	
5	12V batteries	4.95	"CED PROJECT"			24.75	
2	pick handles	2.70				5.40	
2	phd wedges					7.00	
Cliff: Paid CED PROJECT - 24.75 NISLING PROJECT - 25.39 W.R.							

20383

VOICE NUMBER

RECEIVED ABOVE IN GOOD ORDER

PER \_\_\_\_\_

TOTAL

50.14

GOODS RETURNED FOR CREDIT SHOULD BE ACCOMPANIED BY THIS INVOICE.

• YOUR FISHING HEADQUARTERS IN THE YUKON •  
1% INTEREST PER MONTH CHARGED ON OVERDUE ACCOUNTS

STATEMENT

**NEW NORTH MOTEL**  
 2nd Ave & Jarvis St.  
 Whitehorse N.T.

DATE July 31<sup>st</sup> 1972

Dynasty Explorations  
 336 - 355 Burrard St.  
 Vancouver, B.C.

DATE	DETAILS	DEBIT	CREDIT	BALANCE
Statement for July's				
July 1st to 8th Inc.				
	Single for Mr. Wil Thompson. 8 nites			
	@ 10 <sup>00</sup> commercial	8000		
July 1st to 5th Inc.				
	Single as above		1/2 CRED	
	for Mr. Peter Dean		1/2 VICTOR	
	3 nites @ 10.00	3000		
	2 nites @ 12.00 for Mr & Mrs Dean.	2400		
July 6th - 2 single				
	rooms. bed and next upon request for gdn breakfast Mrs. Galassi. Call not arrived due to Front St. lost	2000	- CRED	
			8	15400

PAID  
 AUG 7 1972

Revenue  
 Danth *Barry Heber*

Rediform 8M101

BLUE L: 67.00



DEPARTMENT OF INDIAN AFFAIRS  
AND NORTH-EASTERN DEVELOPMENT  
**GENERAL RECEIPT**

MINISTÈRE DES AFFAIRES INDIENNES  
DU NORD CANADIEN  
**RÉCÉPISSÉ GÉNÉRAL**

**B 197053**

BRANCH  
DIRECTION

*N.E.D.*

DATE <i>5/7/72</i>	NATURE AND NUMBER OF REMITTANCE - FORME ET NUMÉRO DE LA REMISE <i>CHEQUE</i>	INVOICE NO. - FACTURE N°	LOCATION - ENDROIT <i>Wase</i>
-----------------------	---------------------------------------------------------------------------------	--------------------------	-----------------------------------

RECEIVED THE SUM OF - REÇU LA SOMME DE  
*TEN DOLLARS ONLY* /100 DOLLARS \$ *10.00*

FROM - DE

*DYNASTY*

*(1462)*

FOR - POUR

*20 CASH MAPS*

*Blin*

AUTHORIZED OFFICER - FONCTIONNAIRE AUTORISÉ

LAND 10-38 (4-68) 7630-21-023-4068

YOUR RECEIPT  
THANK YOU

- 5 JUL 72

\$04.50 — 1  
\$00.50 — 3  
\$02.50 — 5  
\$02.50 — 4

9249 \$10.00 CASH

TAYLOR & DRURY

July 5 '72

Dynasty Explorations

Pickup

4	cans	Beans		4 X 30	120
6	#	R Corn		6 X 35	210
6	"	Mushrooms		6 X 55	330
2	48	orange juice		2 X 89	178
1	"	Grapefruit		*	73
1	"	peas 2/67			67
2	"	Ham Chowder		3 X 45	135
2	"	Chicken noodle	2/49	<del>2</del>	49
2	"	Gr Mushroom	2/3		53
6	"	Donut bacon		6 X 125	750

Sub 19.71  
 Grand total 137.65

31	Match	31
48	"	48
634	"	63

330-355 Buward St.  
Vancouver, B.C.

HARMAN MANAGEMENT LTD.  
P.O. BOX 4500  
WHITEHORSE, Y.T.

DYNASTY EXPLORATION

18851

CAMP: P. DEAL  
DATE: BURBANK JULY 13, 1972.

ACCOUNT NO.           

INSTRUCTIONS: MARK ALL BOXES 'DYNASTY EXPLORATION'S' TO BE  
PICKED UP THURSDAY P.M.

TAYLOR & DRURY

T & D Invoice  
27756

FRESH MEAT

1	_____	Club steaks	
2	_____	Porterhouse steaks	
3	_____	Round steaks	
4	_____	Sirloin steaks	
5	<u>6</u>	T-Bone steaks	1040
6	_____	Beef roast	
7	_____	Pork roast	
8	_____	Prime rib roast	
9	<u>3 lbs</u>	Chicken breasts	237
10	_____	Chicken legs	
11	_____	Chicken - whole	
12	_____	Turkey	
13	_____	Rolled ham	
14	_____	Lamb chops	
15	<u>12</u>	Pork chops	466
16	_____	Veal cutlets	
17	_____	Veal loaf	
18	_____	Sweet & Sour spareribs	
19	_____	Corned beef	
20	<u>2 lbs</u>	Ground beef	150
21	_____	Sewing beef	
22	_____	Salami	
23	_____	Pepperoni	
24	_____	Breakfast sausage	
25	_____	Pure pork sausage	
26	_____	Beef sausage	
27	<u>1</u>	Garlic sausage	144
28	_____	Summer sausage	
29	_____	Bacon	
30	_____	Weiners	
31	_____	Asst. luncheon meat	

Spoc 6593  
Meat 2037  
Produce 1110  
9740

FRESH FRUIT

32 10 lbs 450  
33 \_\_\_\_\_

Apples  
Bananas

T  
N  
T



**TRANS NORTH TURBO AIR LTD.**



BOX 4338      PHONE 668-2177  
WHITEHORSE, YUKON

TO: [

Dynasty Exploration Ltd.  
#330, 355 Burrard Street  
Vancouver 1, B.C.

]

L

]

DATE      July 31, 1972

INVOICE NO.      A655-2

P.O. NO.

**TO:** Charge you with the charter of Bell 206B JetRanger  
Helicopter CF-BDL  
Pilot: N. Dunbar

**FLYING:** July 16, 19, 23 & 29, 1972  
Daily Flight Report Nos. 7068, 7080, 7087 & 7102

5.7 hrs. at \$253.00 per hour      \$1,442.10  
(Rate when carrier supplies fuel)

**PLUS:** Excess cost of fuel at following points:  
Charterer assessed with cost  
of fuel over \$.60 per gallon

Haines Junction  
13 gallons at \$.27 per gallon      3.51

Burwash  
107 gallons at \$.37 per gallon      39.59

**INVOICE TOTAL**      \$1,485.20

223-815 - 1328.<sup>86</sup>  
223-846 - 156.<sup>34</sup>  

---

1485.20

TERMS: ONE PERCENT INTEREST PER MONTH WILL BE CHARGED ON ALL INVOICES NOT PAID WITHIN 30 DAYS OF DATE ISSUED.

T  
N  
T



**TRANS NORTH TURBO AIR LTD.**



BOX 4338      PHONE 668-2177  
WHITEHORSE, YUKON

TO:

Dynasty Explorations Limited  
#330-355 Burrard Street  
Vancouver 1, British Columbia

L

└

DATE      July 20, 1972

INVOICE NO.      A512-2

P.O. NO.

**TO:      Charge you with the following helicopter charters:**

Bell 47G-2 Helicopter CF-ETR  
Pilot: G. Drzymala

**FLYING:**      July 9, 1972  
Daily Flight Report No. 6236

3.0 hours at \$120.00 per hour  
(Rate when carrier supplies fuel)

\$360.00

**PLUS:**      Excess cost of fuel at Haines Junction  
Charterer assessed with cost  
of fuel over \$.60 per gallon  
30 gallons at \$.34 per gallon

370.20

10.20

223-846

Bell 206B JetRanger Helicopter CF-DDL  
Pilot: R. Dunbar

**FLYING:**      July 6, 1972  
Daily Flight Report No. 7050

1.5 hours at \$253.00 per hour  
(Rate when carrier supplies fuel)

379.50

**PLUS:**      Excess cost of fuel at Haines Junction  
Charterer assessed with cost  
of fuel over \$.60 per gallon  
32 gallons at \$.27 per gallon

388.14

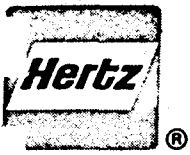
223-846

8.64

**INVOICE TOTAL**

\$758.34





**YUKON AUTO RENTALS LTD.**  
402 OGILVIE ST.,  
WHITEHORSE, YUKON

**RENTAL AGREEMENT  
CONTRAT DE LOCATION**

C641474

(HEREINAFTER CALLED "LESSOR" - CI-APRÈS APPELÉE LOCATEUR)

NO. 29

**DYNASTY EXPLORATION**  
330-355 BOUGARD  
VAN 1 BC  
PETER DEAN

UNIT NUMBER - N° DU VÉHICULE

OWNING CITY - VILLE PROP. **WHITEHORSE**

CAR MAKE - MARQUE **CHRY.**

LICENSE NO. - PLAQUES **UD-154**

PROV. **YUKON**

OTHER:  HTZ  DIN.  AMEX  CB.  ATC

CAR CHECKED IN AT (CITY) / LIEU DE RETOUR (VILLE)

DATE & TIME - DATE & HEURE  
IN ARRIVÉE: **JUN 19/72**

STATION

CAR RENTED AT (CITY) / AUTO LOUÉE À (VILLE) **WHITEHORSE**

DATE & TIME - DATE & HEURE  
OUT DÉPART: **JUN 4/72**

STATION

CAR TO BE CHECKED IN AT / LIEU DE DESTINATION **WHITEHORSE**

STATION DAY / JOUR DATE / DATE YEAR / ANNÉE TIME - HEURE **2 15**

RIVER'S LICENSE NO. - PERMIS DU CONDUCTEUR **1065442**

PROV. **BC**

EXPIRES DAY / JOUR MO. / MOIS YR. / ANNÉE

VEHICLE NO. - PASSEPORT

ISSUED BY & DATE - ÉMIS PAR & DATE

AGE

LOCAL ADDRESS - ADRESSE LOCALE **Whitehorse**

TELEPHONE

SECOND ADDRESS - DEUXIÈME ADRESSE (HOME/BUSINESS) (DOMICILE / AFFAIRES)

TELEPHONE

DEPOSIT - DÉPÔT

HOURS @ \$

5 DAYS @ \$ **1600**

80<sup>00</sup>

WEEKS @ \$

MILES @ **16.0** PER MILE PAR MILLE **5572**

SUB-TOTAL **13372**

LESS TRUCK DISC **1337**

**COLLISION DAMAGE WAIVER**

BY HIS INITIALS, Customer agrees to pay a fee stipulated below, and agrees to waive all claims against the Lessor for the first \$100.00 of damage by collision with any vehicle, parked, operated or driven in conformity with the Rental Agreement, but not withstanding payment of said fee. Customer shall be fully liable for all collision damage if vehicle is used, operated or driven in violation of any of the provisions of this Rental Agreement.

\$8.00 PER DAY OR FRACTION THEREOF;  
\$10.00 PER WEEK

INITIALE(S) HERE - ICI

**EXONÉRATION DES DOMMAGES PAR COLLISION**

EN APPOSANT SES INITIALES, le client consent à payer l'honoraire stipulé ci-dessous et le locateur accepte d'écarter toutes les réclamations contre le client pour les premiers \$100.00 de dommages causés au véhicule par une collision alors qu'il est employé, mis en service ou conduit conformément aux dispositions de ce contrat de location, alors qu'obstant le paiement de cet honoraire, le client sera pleinement responsable pour tous dommages dus à une collision si le véhicule est employé, mis en service ou conduit contrairement à l'une des conditions de ce contrat de location.

\$2.00 PAR JOUR OU FRACTION DE JOUR  
\$10.00 PAR SEMAINE

SUB-TOTAL **120.53**

INTERCITY FEE / FRAIS INTER-CITÉS

COLLISION DAMAGE WAIVER / FRAIS D'EXONÉRATION DE DOMMAGES PAR COLLISION

**PERSONAL ACCIDENT INSURANCE**

BY HIS INITIALS, Customer agrees to pay an additional fee of \$1.00 per day, or part thereof, (\$5.00 weekly) for Personal Accident Insurance under a policy arranged by Hertz, the Terms and Conditions of which are set forth in the attached Form, Series 40892. Insurance applies using the term this Rental Agreement is in force.

INITIALE(S) HERE - ICI

**ASSURANCE ACCIDENT PERSONNELLE**

EN APPOSANT SES INITIALES, le client convient de payer un honoraire additionnel de \$1.00 par jour ou partie d'icelui, (\$5.00 par semaine) pour une assurance accident personnelle en vertu d'une police émise à Hertz et dont les termes, conditions et stipulations sont décrites dans le formulaire série No 40892 ci-annexé. L'Assurance est en vigueur durant le même terme que ce contrat de location.

SUB-TOTAL **120.53**

TAX % TAXE

P.A. INSURANCE / ASSURANCE ACCIDENT PERS.

HAVE READ THE TERMS & CONDITIONS ON PAGE 1 (OTHER SIDE) AND PAGE 2 OF THIS RENTAL AGREEMENT AND AGREE THERETO:

J'AI PRIS CONNAISSANCE DES CLAUSES ET CONDITIONS DE LA PAGE 1 (REVERS) ET DE LA PAGE 2 DE CE CONTRAT DE LOCATION ET JE LES ACCÉPTE:

X CUSTOMER'S SIGNATURE / SIGNATURE DU CLIENT

CUSTOMER IS LIABLE FOR ALL PARKING AND TRAFFIC VIOLATIONS - GAS NOT INCLUDED IN RATES.  
LE CLIENT EST RESPONSABLE DE TOUTE CONTRAVENTION CONCERNANT LE TRAFIC ET LE STATIONNEMENT - LE TARIF N'INCLUT PAS L'ESSENCE.

ADDITIONAL DRIVER'S NAME - NOM DU CONDUCTEUR ADDITIONNEL

AGE

RENTAL AGREEMENT / CONTRAT DE LOCATION

DRIVER'S LICENSE NO. - PERMIS DU CONDUCTEUR

PROV.

EXPIRES DAY / JOUR MO. / MOIS YR. / ANNÉE **402 00**

SHOW RENTAL AGREEMENT NO. ON ALL CORRESPONDENCE / MENTIONNER LE NO DE CONTRAT DE LOCATION DANS TOUTE CORRESPONDANCE

GAS / ESSENCE **8.20**

MISC. DIVERS / **2.00**

TOTAL CHARGE / TOTAL DES FRAIS **130.73**

DEPOSIT / DÉPÔT

VOUCHER

NET DUE / FRAIS NET **130.73**

EXCHANGE RATE / TAUX D'ÉCHANGE

REFUND RECEIVED BY / REMBOURSEMENT REÇU PAR

FOR Hertz USE ONLY - ESPACE RÉSERVÉ À Hertz

**500<sup>00</sup> DEDUCTIBLE**

BASIC CHARGE: 1 DAY PLUS MILEAGE / FRAIS MINIMUM: 1 JOURNÉE PLUS PARCOURS

REFERRAL- RES. PREPARED BY - PRÉPARÉ PAR

IN YOUR CURRENCY / MONNAIE ÉTRANGÈRE

REF. RIH INTR G.C. D.B. CASH  
6 5 4 3 2 1

COMPUTED BY / COMPILE PAR

(SIGNATURE)

CASH REFUND - REMBOURSEMENT COMPTANT REP.

POSTED - DRB - ENTRÉE

DAY / JOUR MONTH / MOIS

**S H I P T O**  
 NISLING PROJECT

**ORIGINAL INVOICE**

PLEASE REMIT TO  
 BOX 5808 STN. A  
 CALGARY, ALBERTA  
 T2H 1Y3



58

**S O L D T O**  
 DYNASTY EXPLORATIONS  
 330-355 BURNARD STREET  
 VANCOUVER BC

TERMS: ACCOUNTS ARE DUE ON 10th OF MONTH IMMEDIATELY FOLLOWING DATE OF INVOICE AND ARE OVERDUE ON LAST DAY OF THAT MONTH. SERVICE CHARGES OF 1% PER MONTH (18% PER ANNUM) ARE PAYABLE ON OVERDUE BALANCE.

INVOICE DATE 7/27/14	DATE SHIPPED 7/27/14	SHIPPED FROM YUKON	SALESMAN 88	UNIT NO.	INVOICE NUMBER 68358
CUSTOMER NUMBER 27826	PURCHASE ORDER NUMBER	FEDERAL SALES TAX NO.	PROVINCIAL SALES TAX NO.	DATE OF INVOICE G.S. OF 1% PER	

ITEM NO.	DESCRIPTION	ORDERED	SHIPPED	PRICE	PER	DISC.	EXTENSION	FED. TAX UNIT	FED. TAX EXTENSION
2048220	ARCTIC SURGLO GRANGE 125'	24	24	1.00	RL		24.00	8	1.92

**PAID**

UNIT	F.S.T. EXT.
08	192

TRANSPORTATION CALCULATION @ BUSH TIME HRS.	TRANSPORT. TOTAL	EXTENSION TOTAL 24.00	FED. TAX TOTAL 1.92	PROV. TAX	TOTAL 25.92	<b>PAY THIS AMOUNT</b>
---------------------------------------------------	------------------	--------------------------	------------------------	-----------	----------------	------------------------

LOFI

72 TOTAL  
 (PART EXPLOSIVES.  
 BY TICKET.)