

GEOLOGIC, GEOPHYSICAL, GEOCHEMICAL

INVESTIGATION OF THE ROTO GROUP

TINTINA PROJECT

I hereby certify that the within instrument is a true and correct copy of the instrument of which it purports to be a copy, and which was registered in the Office of the Mining Recorder at Whitehorse, Y.T.,

this day of
19..... under number.....
Dated at Whitehorse, Y.T., this
day of 19.....

Mining Recorder,
Whitehorse Mining District

Anvil District
Yukon Territory

Approved

Longitude: 133°43' W
Latitude : 62°26' N

This report has been examined by the Geological Division and is recommended to be considered as representation work to the amount of

6120.73

N.T.S. 105-K-5

Field work done in the period
August 1st - September 15, 1970

D. Brang
President of
Resident Mining Engineer

Considered as representation work under
Section 53 (4) Yukon Quartz Mining Act.

By

WAYNE J. ROBERTS

W. J. Roberts
Commissioner of Yukon Territory

DYNASTY EXPLORATIONS LIMITED



February, 1971

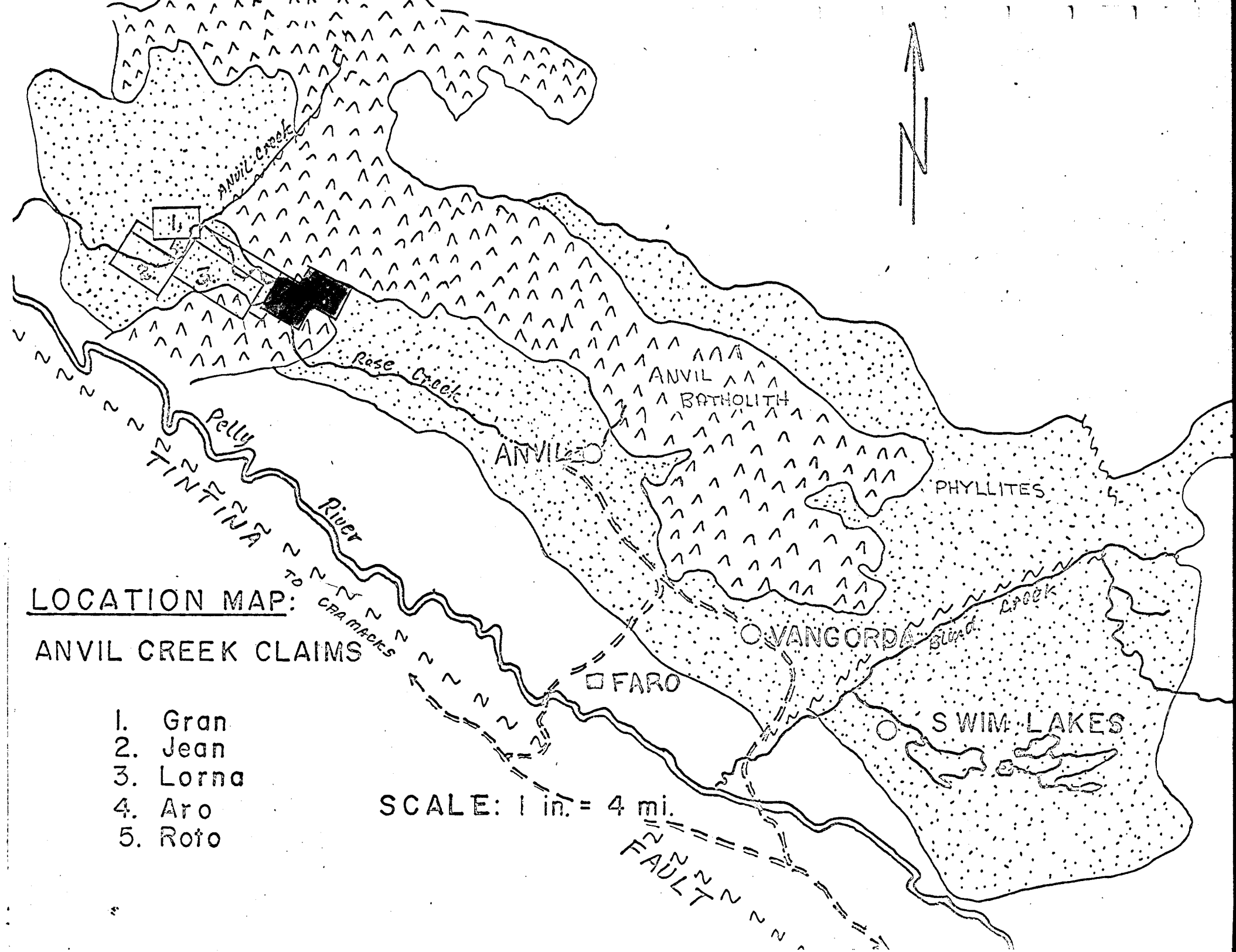
TABLE OF CONTENTS

	<u>Page</u>
LIST OF CLAIMS	
KEY MAP	
INTRODUCTION	1
LOCATION AND ACCESS	1
REGIONAL GEOLOGY	1
GEOPHYSICAL SURVEYS	2
Airborne Magnetometer Map	
Airborne Electromagnetic Map	
(a) Ground Magnetometer Survey	2
(b) Gravity Survey	3
GEOCHEMICAL SURVEYS	5
(a) Survey Techniques	5
(b) Analytical Methods	5
(c) Presentation of Data	5
(d) Interpretation of Results	5
TABLE OF GEOLOGIC FORMATIONS	7
GEOLOGY	8
CONCLUSIONS AND RECOMMENDATIONS	9

Appendix	I	Roto Group Claim Map
Appendix	II	Geology Map
Appendix	III	Geochemical Values and Contour Map
Appendix	IV	Magnetometer Values and Contour Map
Appendix	V	Residual Gravity Map
Appendix	VI	List of Personnel
Appendix	VII	Summary of Costs
Appendix	VIII	Affidavit Supporting Summary of Costs
Appendix	IX	Vouchers Supporting Costs

LIST OF CLAIMS

<u>Claim</u>	<u>Grant Number</u>	<u>Recording Date</u>
ROTO 1-50	Y58143-Y58192	Aug. 31, 1970
51-53	Y58788-Y58790	Sept. 11, 1970



LOCATION MAP:

ANVIL CREEK CLAIMS

- 1. Gran
- 2. Jean
- 3. Lorna
- 4. Aro
- 5. Roto

SCALE: 1 in. = 4 mi.



Anvil Creek

Rose Creek

Pelly River

River

Blind Creek

ANVIL BATHOLITH

PHYLLITES

ANVIL

VANGORDA

FARO

SWIM LAKES

FAULT

TO CRAMACKS

GEOLOGIC, GEOPHYSICAL, GEOCHEMICAL
INVESTIGATION OF THE ROTO GROUP
TINTINA PROJECT

INTRODUCTION

Dynasty Explorations Limited undertook a program of outlining and delineating airborne magnetic and electromagnetic anomalies in the northwestern portion of the Anvil phyllite belt which contains three known replacement lead-zinc deposits. Several anomalies similar to ones caused by known deposits occur in an area of favourable stratigraphy and nearby granitic intrusives and were thought to warrant further investigation. A total of 208 claims were staked in five groups covering prominent anomalies.

The Roto 1-53 claims were staked to cover two aeromagnetic anomalies of which the main one is three-quarters of a mile long and one-half mile wide elongated in a northerly direction. An electromagnetic anomaly also occurs to the west of the aeromagnetic features. Ground follow-up consisted of magnetometer, gravity, soil sampling and geologic surveys.

LOCATION AND ACCESS

The Roto Group is located at the junction of Rose and Anvil Creeks, approximately 18 miles northwest of Faro. Access is by road to the Anvil mine, then by helicopter to the campsite on Anvil Creek.

REGIONAL GEOLOGY

The Anvil District lies along the northeast side of the Tintina Trench, a zone of major northwest transcurrent faulting, and occurs as a belt of metasediments of probable Paleozoic age

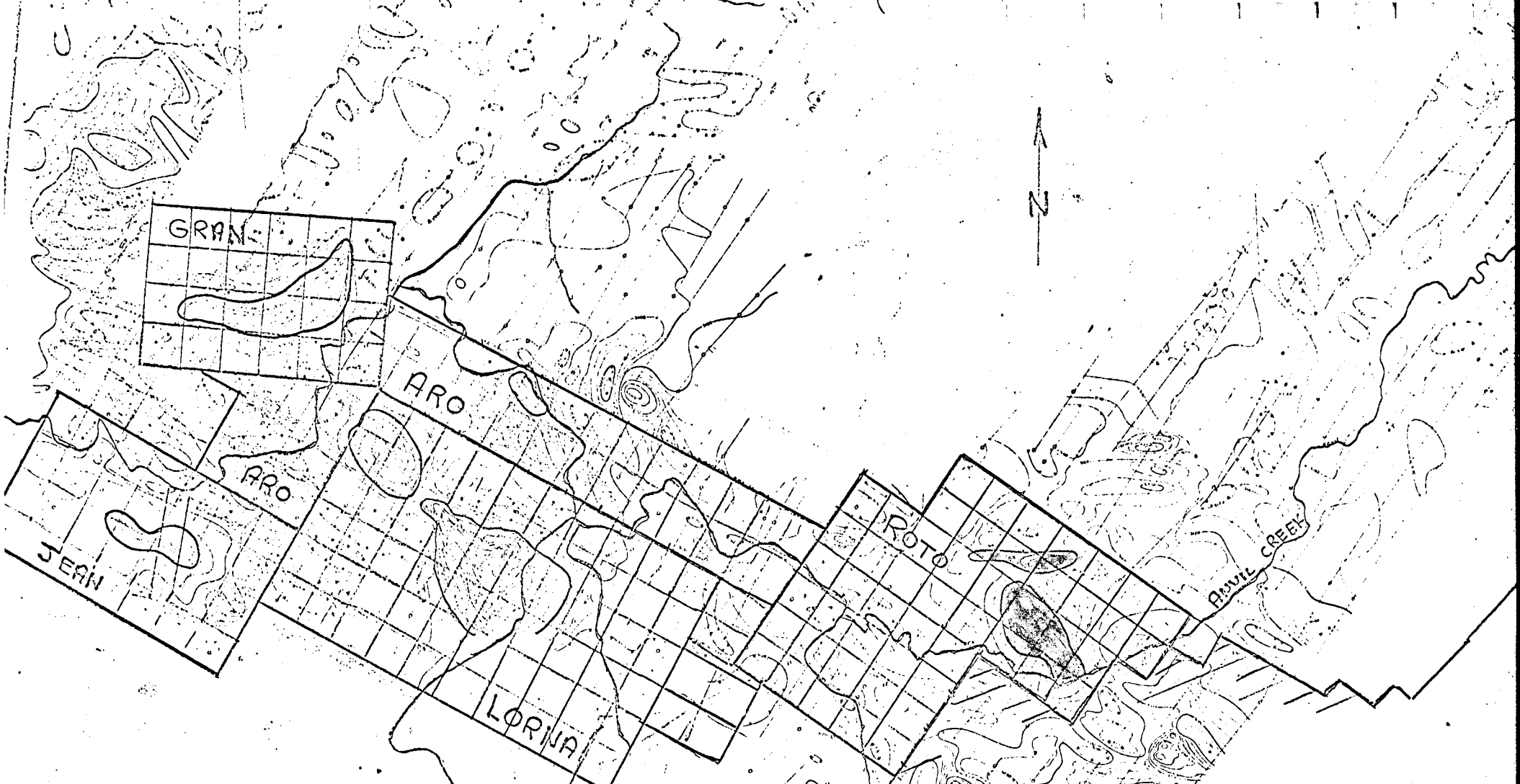
arched over a central core of Cretaceous granodiorite, the Anvil batholith. The structure being a double plunging anticline with a northwest trending fold axis slightly arched plunging both to the northwest and southeast. The phyllite belt, noted on the accompanying Location Map, consisting of quartz-mica schists, sericite schists, sericitic to graphitic phyllites, and greenstone lenses is the host for the massive stratiform replacement sulphide deposits in the area. The degree of metamorphism tends to increase from the Swim Lakes area northwest to Anvil, which may be noted both in the change in metamorphic facies and variability of sulphide grain size within the deposits.

GEOPHYSICAL SURVEYS

(a) Ground Magnetometer Survey

The magnetic survey was conducted over the grid area to outline the large elongate aeromagnetic anomaly (obtained from a previous airborne survey conducted by Anvil Mining Corporation). The magnetic survey was carried out over 800 ft. spaced cut lines, readings were taken every 100 ft. All lines were established by compass and chain methods and were cut approximately 2 to 3 ft. wide. Grid control was checked by survey of base and tie lines during the gravity survey.

A Sharpe MF-1 magnetometer was used, the instrument is hand held and measures the vertical magnetic component by use of an oil-dampered fluxgate which automatically levels itself in the vertical direction. Gamma values can be directly read from the instrument. Prior to the actual magnetometer survey, readings were taken along the base lines at cross line intersection points. These stations were looped and re-read every hour as a means



ANVIL MINING CORP.

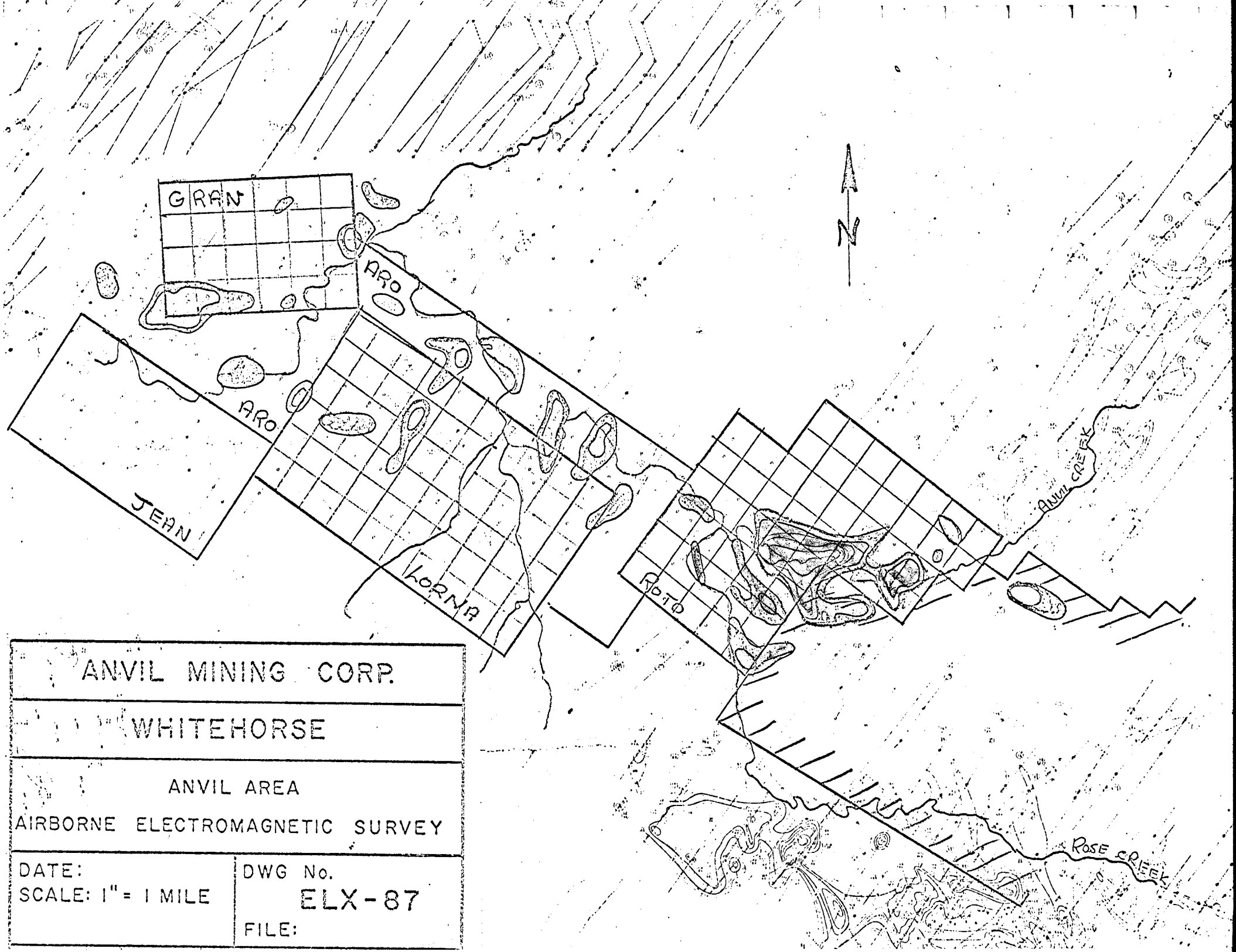
LOCKWOOD

ANVIL AREA
AIRBORNE MAGNETOMETER SURVEY

DATE:
SCALE: 1" = 1 MILE

DWG No.
ELX-86

FILE:



GRAN

ARO

ARO

JEAN

KORN

ROTO

ANVIL CREEK

ROSE CREEK



ANVIL MINING CORP.

WHITEHORSE

ANVIL AREA

AIRBORNE ELECTROMAGNETIC SURVEY

DATE:
SCALE: 1" = 1 MILE

DWG No.
ELX-87
FILE:

of controlling drift and diurnal variations. With established base stations, a rapid and precise check was kept on a relative basis during day to day operation. All cross lines were read and re-checked at base stations within every hour as a means of checking magnetic variations.

Magnetic results were corrected for both diurnal changes and drift then plotted on a grid plan with a scale of 400 ft. to 1 inch. The data was then contoured with the resulting map included in this report.

Magnetic relief throughout the grid area generally was low with a maximum difference of approximately 500 gammas. Much of the western grid area contained little magnetic variation, while weak irregular anomalies occur in the eastern portion in the Anvil Creek valley. The ground magnetometer 1000 gamma contours correspond closely to the aeromagnetic anomalies outlined on the Airborne Magnetometer Survey Map. No outcrop exists in the Anvil Creek valley but geologic interpretation from nearby ridges suggests that the magnetic features are caused by a northwest trending belt of greenstone, Unit Number 8 on the accompanying Geology Map, which generally contains disseminated pyrrhotite or magnetite.

(b) Gravity Survey

The gravity survey, contracted by Overland Exploration Services, was conducted over the magnetic anomalous area on the eastern portion of the grid. The horizontal and vertical survey was conducted with a T-1A Theodolite to establish elevations and grid closure. The gravity readings were taken with a Worden Master meter at every

100 ft. station along the individual lines with two and a half hour loop closures from base stations for controlling diurnal drift. Each loop has several repeat stations from preceding loops to ensure accuracy of the gravity meter. All field results were sent to the Calgary head office for corrections and interpretation. All readings were corrected for diurnal tidal drift, Bouguer Free-Air-correction, latitude correction and terrain correction. All resulting maps were then sent back to the field for further interpretation.

The Bouguer map shows a low or mass deficient area trending southwest to northeast through the centre of the grid area. Flanking this low area there is a steady rise in the gravity gradient to the southeast and northwest. These major gravity "high" areas occur on the Residual Gravity map found in Appendix V. One appears on Line 32 east, 2000 ft. south with a high of over 0.90 milligals but with very limited extent. The largest gravity anomaly occurring on Line 48 east, 700 ft. north has a peak value of over 0.60 milligals but does not appear to attain a magnitude necessary to equate it to the gravity reflection of a massive lead-zinc sulphide body. A smaller anomaly on the baseline at Line 64 east is only partially formed and if further gravity was done further north on Line 64E, the anomaly could attain a greater magnitude although it is limited by little response on Line 72 east.

Residual Gravity anomalies lie in an area of generally "high" magnetics but only in one locality, Line 48E, 700 ft. north, do both the gravity and magnetic peaks co-exist.

GEOCHEMICAL SURVEYS

(a) Survey Techniques

The entire grid area was soil sampled at 200 ft. stations on 800 ft. spaced picket lines. All samples were taken from the B-horizon which generally consisted of a rusty to grey clay textured soil. All samples were placed in kraft paper bags and subsequently sent to the Atlas Explorations laboratory in Whitehorse for analysis.

(b) Analytical Methods

All soil samples were dried and sieved to -80 mesh and the fines were retained for analysis. 0.5 grams of each sample was digested in aqua regia, diluted, and allowed to settle. Concentrations of copper, lead and zinc in solution were determined with a Perkin-Elmer 303AA spectrophotometer. The analytical technique was controlled by selected standardized samples.

(c) Presentation of Data

All analytical results were plotted then contoured on a grid plan to a scale of 1 inch equals 400 ft., which may be found in the accompanying Appendix.

(d) Interpretation of Results

Copper values in soils range from 8 to 66 ppm with a threshold of approximately 50 ppm. Lead content of soil was between 2 and 36 ppm with approximately 80% of the values below the estimated threshold of 20 ppm. Zinc values range from 2 to 165 ppm. Visual estimates indicate 100 ppm zinc as a realistic threshold value for the grid soils. As may be noted on the accompanying "Geochemical Values and Contour Map", concentrations

of the three metals in individual samples has formed coincident anomalies. There is a general northerly trend of the anomalous area existing to the east and partially down-slope from the magnetic anomalies. Since there is overburden cover in the valley, soils and metal content may originate from either causative structures producing the geophysical anomalies or from a source up Anvil Creek.

TABLE OF GEOLOGIC FORMATIONS

CRETACEOUS

10

Medium grained biotite granite to biotite hornblende quartz Monzonite (locally) porphyritic.

8

"Greenstone" includes schistose meta-basalt, chlorite-talc-amphibole schist, amphibolite, meta-ultramafic units, and Gabbro

3

Mica-quartz phyllite, dark grey to black graphitic phyllite, black slate, phyllitic quartzite and chlorite phyllite.

1

Mica-quartz schist, biotite-garnet schist and sericite schist.

CAMBRIAN OR EARLIER

GEOLOGY

Four separate and distinct units were mapped in the Anvil Creek area. Designation of rock units is similar to those on the G.S.C. Map "Tay River Geology Map" by Roddick and Green.

The oldest rock unit in the area appears to be the quartz-mica schists in which sericite schist predominates. The schist is very thinly foliated, soft, fissile, and quartz content generally exceeds 40 percent. Greenish tints vary due to chlorite content. Graphitic and carbonate percentages are generally low. Degree of metamorphism may be noted by different facies including minerals such as garnet, staurolite and biotite.

Unit Number 3 consists of phyllite with a grey to black sericitic-quartz phyllite predominating. The graphite content varies with a distinct stratigraphic black graphitic horizon occurring within the unit. The phyllites are very fissile, often show bedding, contain good boudinage structures, and include numerous quartz lenses, pods and stringers which often are rusty and contain pyrite.

Unit Number 8, "Greenstone", includes schistose meta-basalt, amphibolite, chlorite-talc-amphibolite schist, chlorite schist and other basic intrusives and extrusives. Foliation is present in the schistose members while intrusive members are generally massive and blocky.

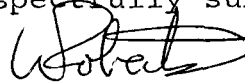
The Anvil batholith is composed of a medium grained hypidomorphic quartz monzonite in this area. It is locally porphyritic.

Much of the Roto Group encloses the overburden covered valleys of Rose and Anvil Creeks, with the only outcrop found along the northern boundary as can be noted on the accompanying Geology Map in Appendix II. It is proposed that the claim group covers a down-dropped block of light grey to black graphitic phyllite with concordant lenses of greenstone. The phyllitic unit strikes northwest and dips 10-20 degrees to the southwest. Using a dip of roughly 20 degrees, the greenstone unit projects under the geophysical anomalies at a depth of approximately 300 to 400 ft. Depth calculations on the gravity anomalies estimate the causative mass to be at a depth of 400 ft. below the surface. The favourable quartz-mica schists likely occur at greater depths.

CONCLUSIONS AND RECOMMENDATIONS

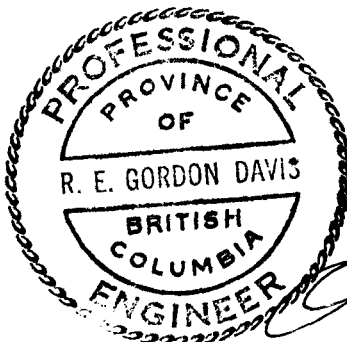
Present geological, geophysical and geochemical surveys have not outlined a possible drilling target. Ground magnetic and gravity anomalies appear to indicate a possible greenstone unit. Due to the thickness of overburden in the Anvil Creek valley, the lack of geochemical response cannot be directly applied to the underlying bedrock. Since massive sulphide deposits in this belt are conductive as well as magnetic, it is recommended that further assessment consist of a ground electromagnetic survey over the grid area and to the west where a prominent airborne electromagnetic exists.

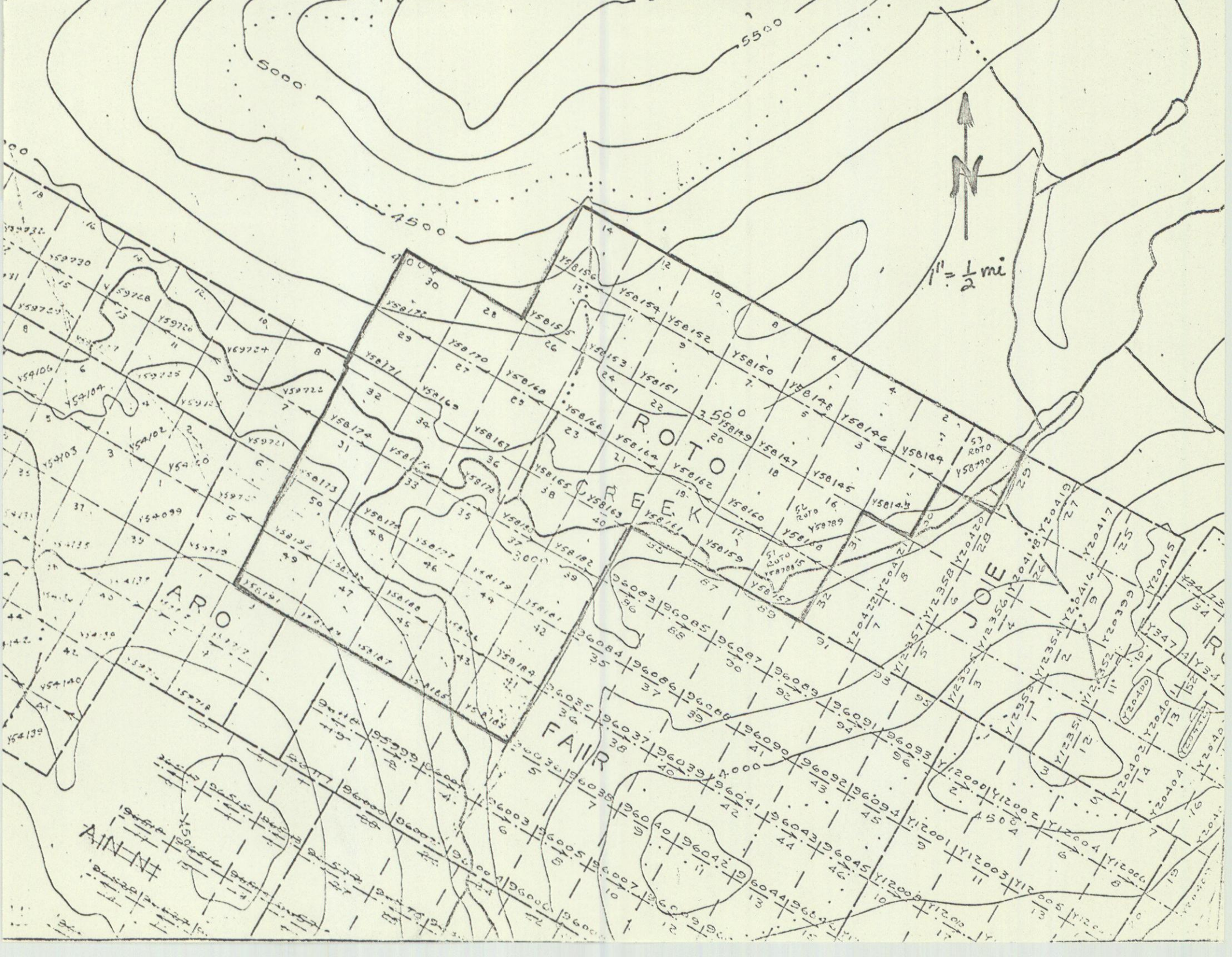
Respectfully submitted,



W. J. Roberts,
Geologist

February, 1971,





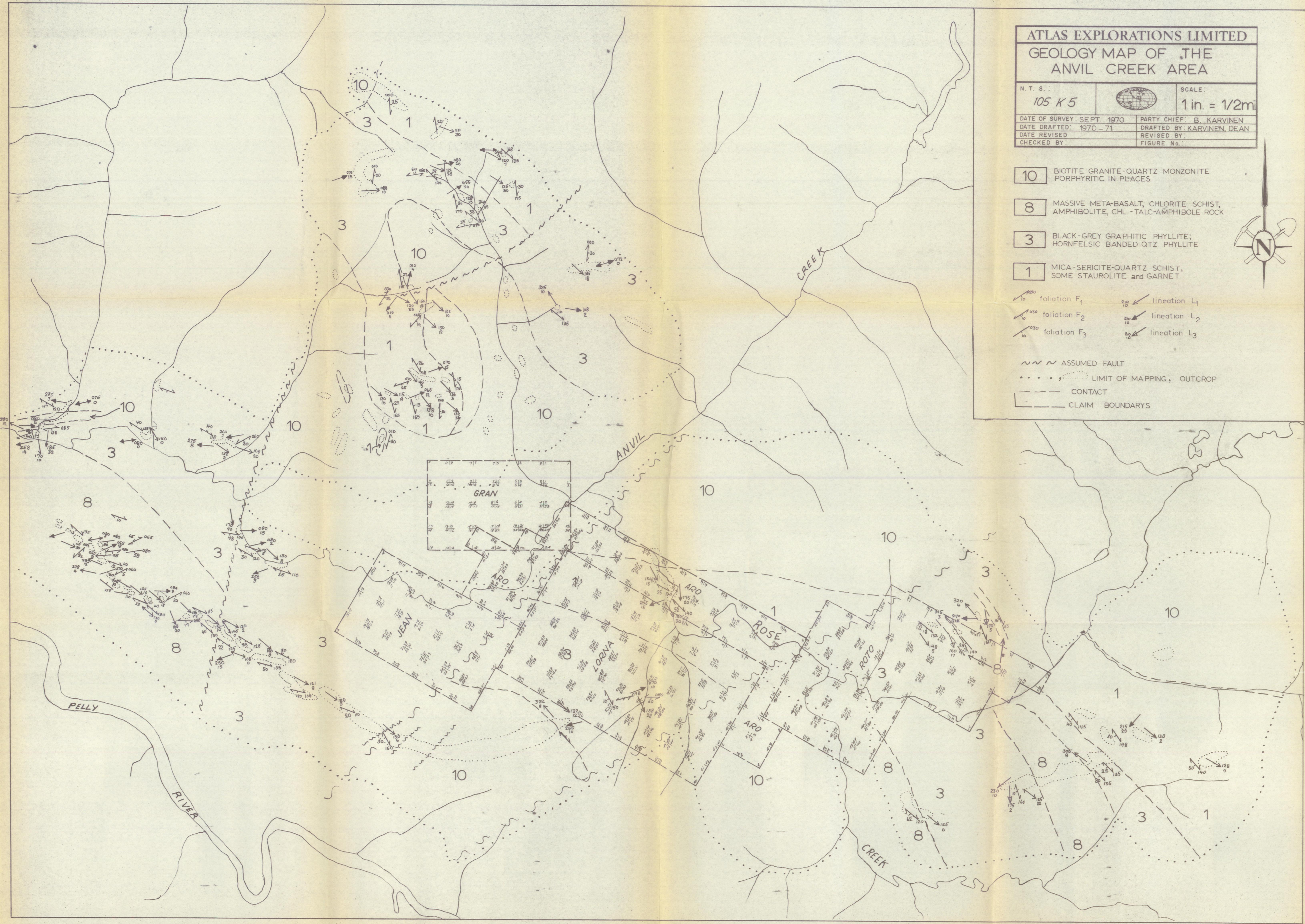
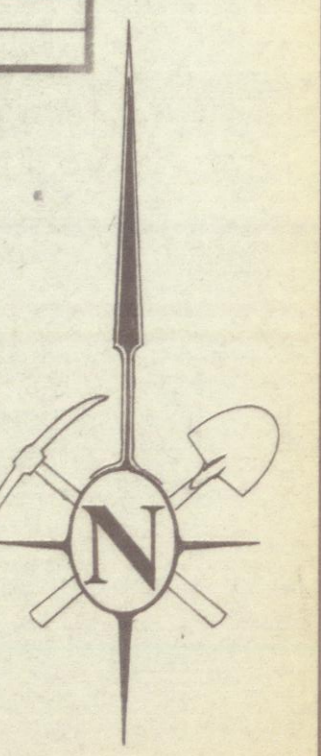
ATLAS EXPLORATIONS LIMITED
 GEOLOGY MAP OF THE
 ANVIL CREEK AREA

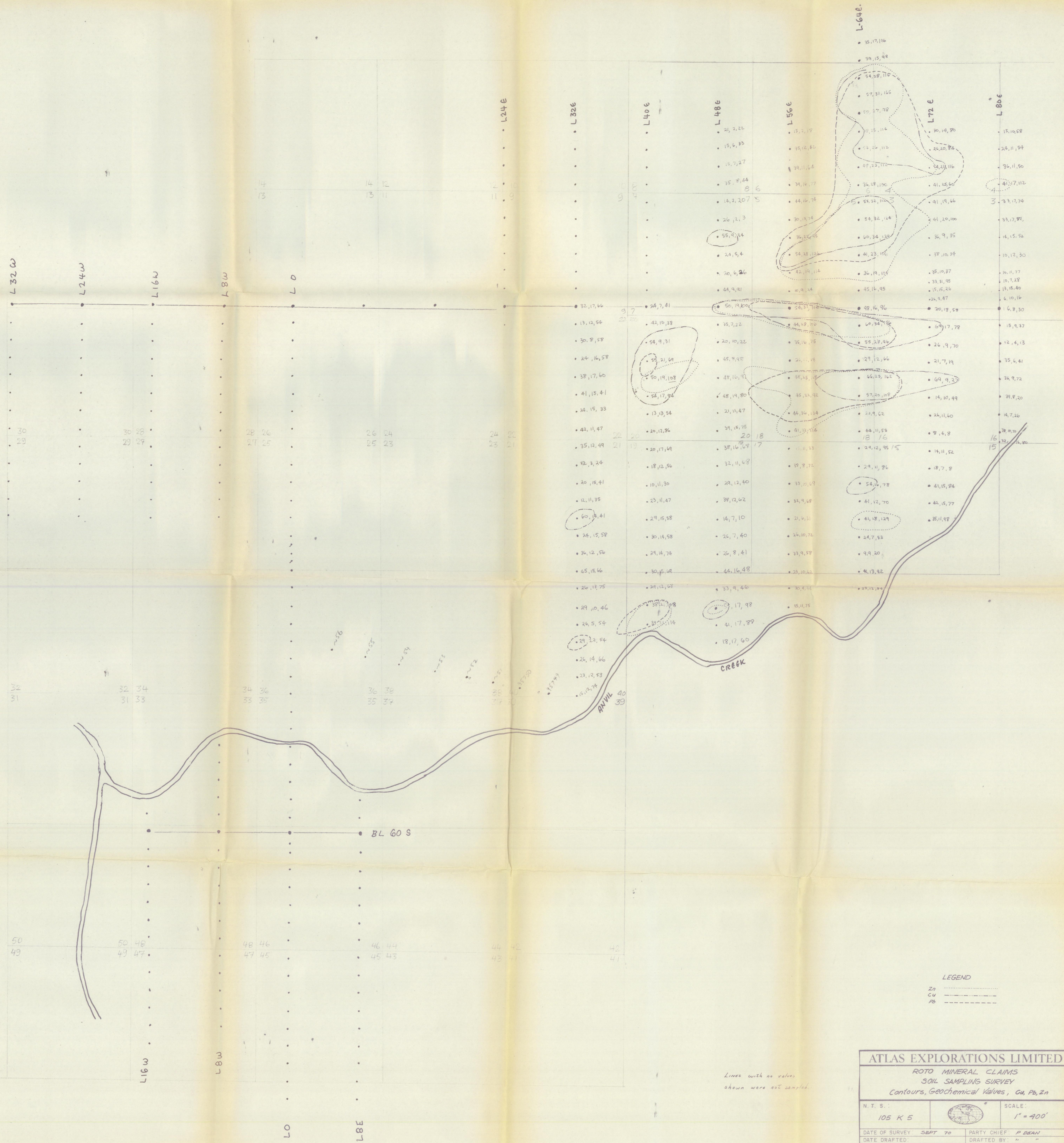
N. T. S.:	105 K 5	SCALE:	1 in. = 1/2 mi
DATE OF SURVEY:	SEPT. 1970	PARTY CHIEF:	B. KARVINEN
DATE DRAFTED:	1970 - 71	DRAFTED BY:	KARVINEN, DEAN
DATE REVISED:		REVISED BY:	
CHECKED BY:		FIGURE No.:	

- 10 BIOTITE GRANITE-QUARTZ MONZONITE PORPHYRITIC IN PLACES
- 8 MASSIVE META-BASALT, CHLORITE SCHIST, AMPHIBOLITE, CHL.-TALC-AMPHIBOLE ROCK
- 3 BLACK-GREY GRAPHITIC PHYLLITE; HORNFELSIC BANDED QTZ PHYLLITE
- 1 MICA-SERICITE-QUARTZ SCHIST, SOME STAUROLITE and GARNET

- foliation F₁
- foliation F₂
- foliation F₃
- lineation L₁
- lineation L₂
- lineation L₃

- ASSUMED FAULT
- LIMIT OF MAPPING, OUTCROP
- CONTACT
- CLAIM BOUNDARIES





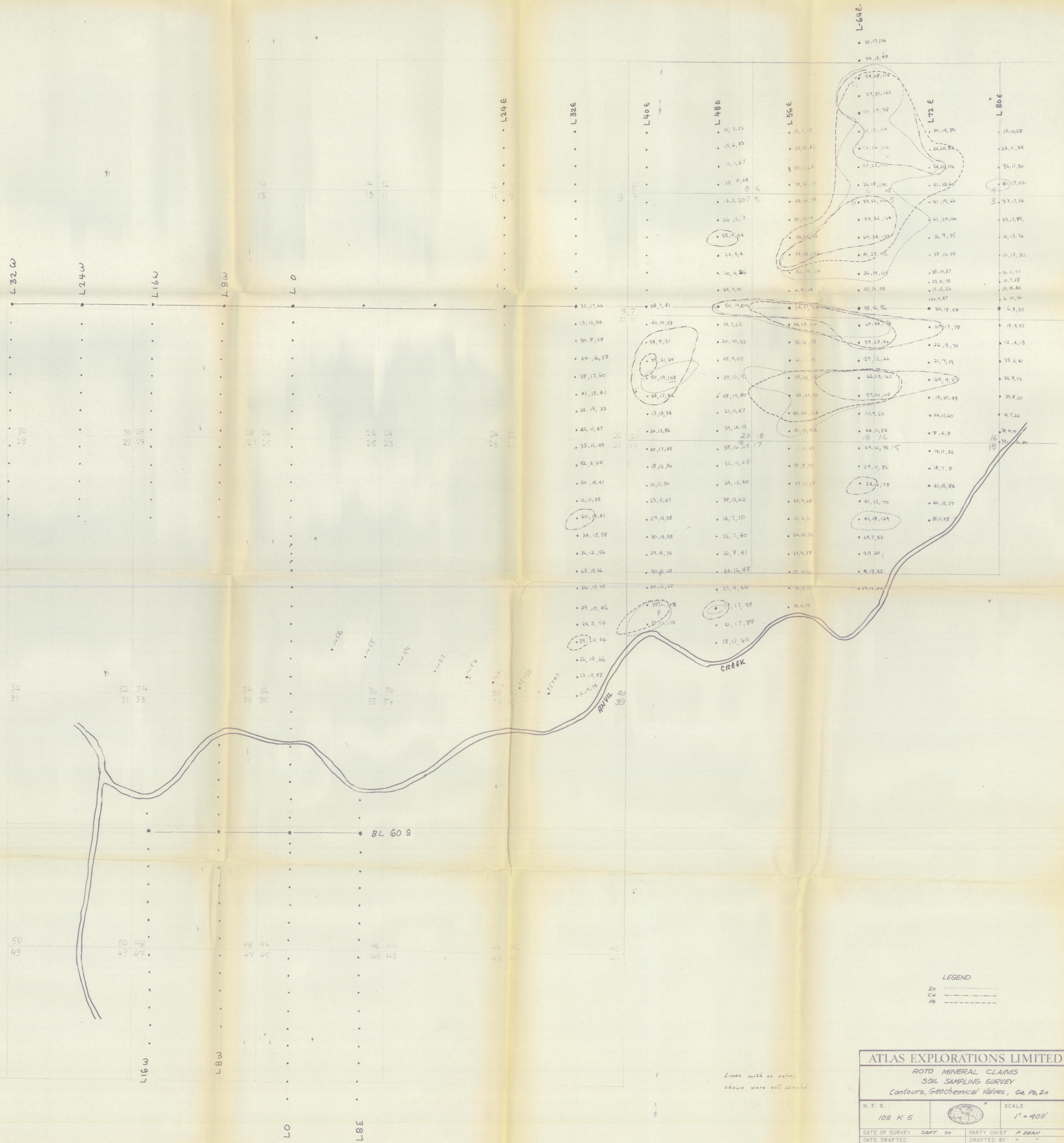
LEGEND
 Zn
 Cu
 Pb

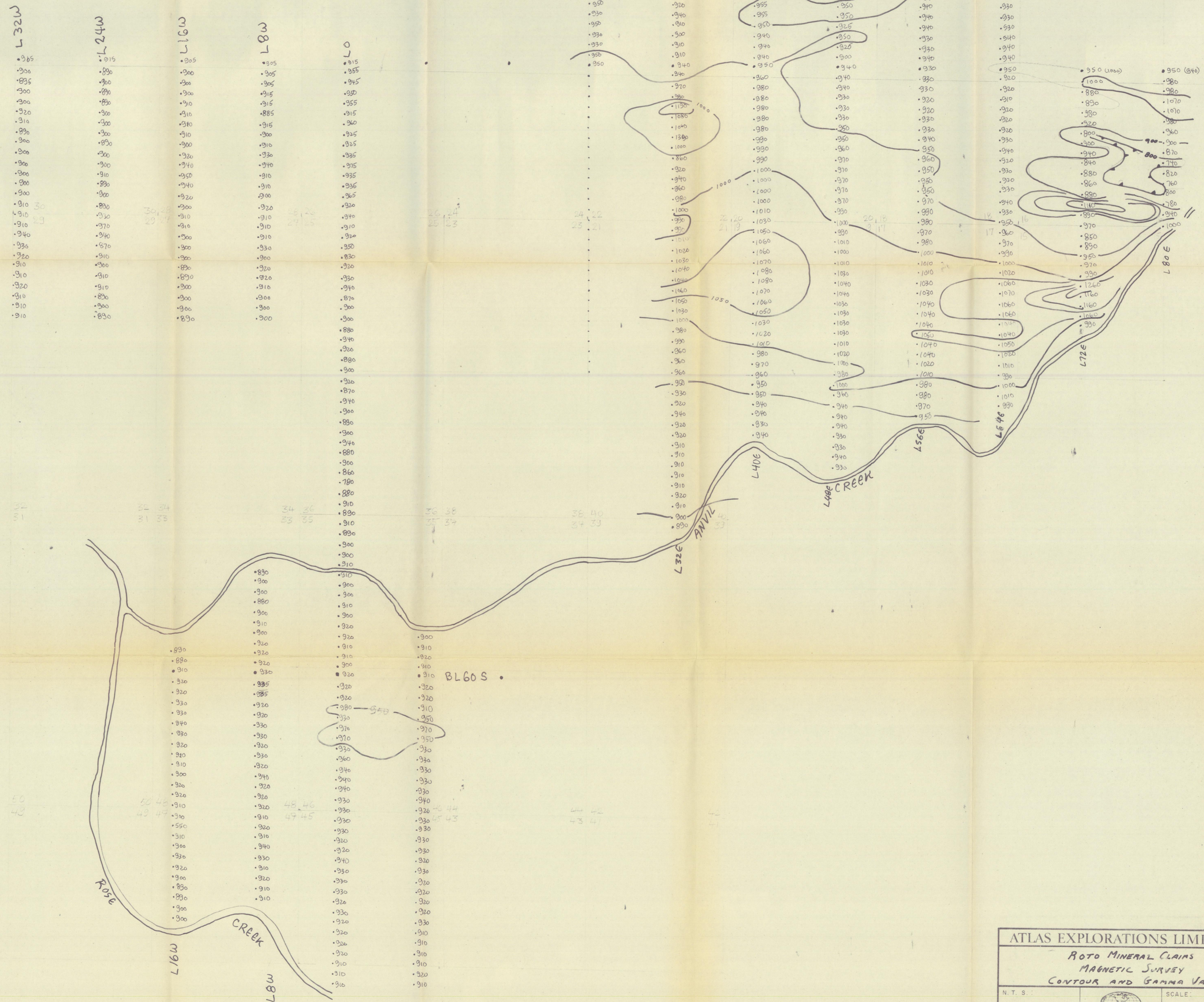
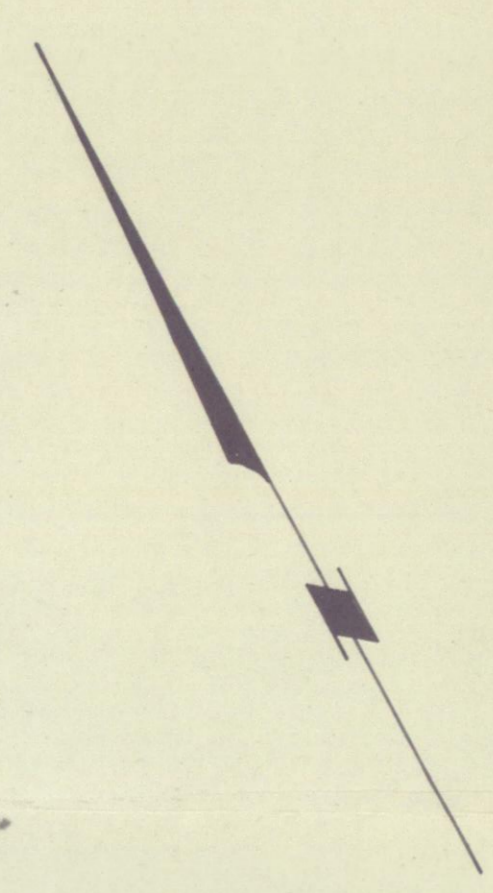
ATLAS EXPLORATIONS LIMITED
 ROTO MINERAL CLAIMS
 SOIL SAMPLING SURVEY
 Contours, Geochemical Values, Cu, Pb, Zn

N.T.S.: 105 K 5 SCALE: 1" = 400'

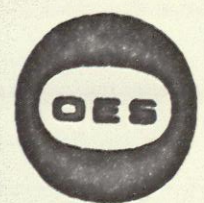
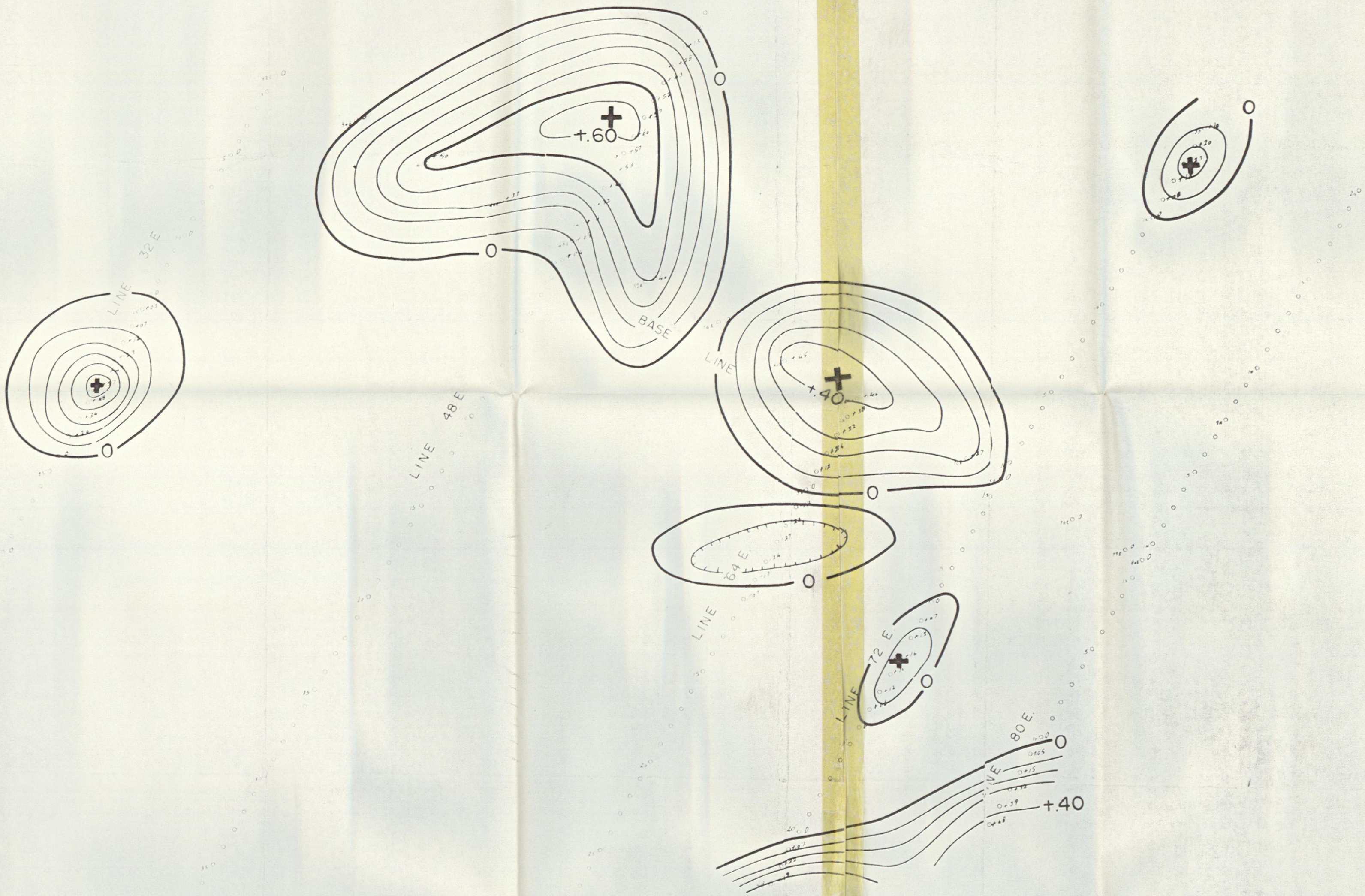
DATE OF SURVEY: SEPT 70	PARTY CHIEF: P DEAN
DATE DRAFTED:	DRAFTED BY: " "
DATE REVISED: FEB/71	REVISED BY: J DENNISON
CHECKED BY:	FIGURE No.:

Lines with no values shown were not sampled.





ATLAS EXPLORATIONS LIMITED			
ROTO MINERAL CLAIMS			
MAGNETIC SURVEY			
CONTOUR AND GAMMA VALUES			
N. T. S.	105 X 5	SCALE:	1" = 400'
DATE OF SURVEY	AUG '70	PARTY CHIEF	DEAN
DATE DRAFTED		DRAFTED BY	
DATE REVISED		REVISED BY	
CHECKED BY		FIGURE No.	



OVERLAND
EXPLORATION SERVICES (1969) LTD.

FOR
ATLAS EXPLORATIONS LIMITED
ROTO CLAIM BLOCK

RESIDUAL GRAVITY MAP

Scale 1" = 400'

CI 0.10 mgl

LIST OF PERSONNEL

<u>Name</u>	<u>Position</u>	<u>Address</u>
J. S. Brock	Vice-Pres. Exploration Geophysicist	Vancouver, B.C.
W. J. Roberts	Geologist	Vancouver, B.C.
W. Karvinen	Geologist	Vancouver, B.C.
P. Dean	Party Chief	Vancouver, B.C.
J. Britton	Mag. Operator	Vancouver, B.C.
S. McLeod	Soil Sampler	Ross River, Y.T.
L. Carlick	Soil Sampler	Ross River, Y.T.
J. Jackson	Linecutter	Ross River, Y.T.
G. Schakoon	Linecutter	Ross River, Y.T.
T. Skonseng	Prospector	Ross River, Y.T.
G. Gray	Cook	Ross River, Y.T.

Contractors

Trans North Turbo Air	Whitehorse, Y.T.
Overland Exploration Services	Calgary, Alberta.

SUMMARY OF COSTS
GEOLOGIC, GEOPHYSICAL, GEOCHEMICAL
INVESTIGATION OF THE ROTO GROUP

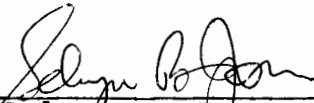
	<u>Geology</u>	<u>Geophysics</u>	<u>Geochem</u>	<u>Total</u>
Wages				
General (Schedule "A")	\$119.21	\$1,060.69	\$ 266.35	\$1,446.25
Report Writing (Schedule "B")	112.00	56.00	56.00	224.00
Assays (Schedule "C")			193.80	193.80
Rotary Wing (Schedule "D")	102.28	910.07	228.53	1,240.88
Contract Charges (Schedule "D")		980.00		980.00
Camp Support (Schedule "D")	84.15	748.75	188.02	1,020.92
Expediting (31.7% of Gen. Wages)	<u>37.78</u>	<u>336.24</u>	<u>84.43</u>	<u>458.45</u>
	\$455.42	\$4,091.75	\$1,017.13	\$5,564.30
Administration Charge 10%	<u>45.54</u>	<u>409.18</u>	<u>101.71</u>	<u>556.43</u>
TOTAL	<u>\$500.96</u>	<u>\$4,500.93</u>	<u>\$1,118.84</u>	<u>\$6,120.73</u>

DYNASTY EXPLORATIONS LIMITED

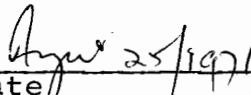
330 MARINE BUILDING
355 BURRARD STREET
VANCOUVER 1, B.C.

AFFIDAVIT SUPPORTING SUMMARY OF COSTS

I, SELWYN B. JONES, Vice-President Corporate, Dynasty Explorations Limited, of Vancouver, British Columbia, do hereby state that, to the best of my knowledge and belief, the statement of cost presented in this report (Geologic, Geophysical, Geochemical Investigation of the Roto Group) is both correct and true.



Selwyn B. Jones



Date



Notary Public in and for
Yukon Territory

A LAS EXPLORATIONS LIMITED

TIME SHEET

NAME Jim Britton
 TYPE OF WORK Field Assistant
 RATE OF PAY 450/month

FOR THE MONTH OF August 1970

DATE	WORK	OFF	FLD. BNS.	CODING	EXPLANATIONS
2	✓	✓		124-07	OWL
	✓	✓		07	
	✓	✓		07	
	✓	✓		08	
5	✓	✓		08	
	✓	✓		08	
	✓	✓		08	
8	✓	✓		08	
	✓	✓		08	
	✓	✓		03	
11	✓	✓		08	
	✓	✓		"	
	✓	✓		"	
14	✓	✓		124 - "	move to LORNA
	✓	✓		136-21	move to LORNA
	✓	✓		136 - "	
	✓	✓		138 - 08	} Reccy Rotomunero Proj
17	✓	✓		138 - 08	
	✓	✓		138 - 08	
	✓	✓		136-08	
20	✓	✓		136-07	
21	✓	✓		136-07	
22	✓	✓		136-07	
23	✓	✓		136-07	
24	✓	✓			
25	✓	✓			
26	✓	✓			
27	✓	✓			
28	✓	✓		138-03	
29	✓	✓		138-07	
30	✓	✓			
31	✓	✓			
TOTAL					

PAYROLL DEPT. USE ONLY		
Imo @		450.00
@		
@		
GROSS BEFORE BOARD		450.00
BOARD		77.50
GROSS EARNINGS		527.50
DEDUCTIONS		
1) CANADA PENSION	8.60	
2)		
3) INCOME TAX	91.45	
4) GROUP	-	
5) M.S.A.	-	
6) ACCTS. REC.	(11.95)	
7)		
8) BOARD	77.50	
9)		
10)		
11) MID MONTH ADVANCE		165.60
NET PAY		361.90

LABOUR CODING	
-01	PROPERTY EXAMINATION
-02	PROSPECTING
-03	STAKING
-04	AIRBORN SURVEYS
-05	LINE CUTTING
-06	GEOLOGY
-07	GEOPHYSICS
-08	GEOCHEMISTRY
-09	DIAMOND DRILLING
-10	PHYSICAL WORK
-11	ACCESS ROADS
-21	CAMP OPERATIONS
-01	VANC. OFFICE - ADMIN.
92-01	VANC. EXPLORATION OFFICE
93-01	WHITE HORSE BASE
-01	ROSS RIVER BASE
-01	GEOCHEM. LAB.
96-01	BULLDOZER

PAYROLL DEPT. USE ONLY			
PROJECT	DAYS	GROSS BEFORE BOARD	FIELD BONUS
124-07-1	3	43.55 ✓	8.71 ✓
124-08-1	9	130.66 ✓	26.14 ✓
124-03-1	1	14.51 ✓	2.90 ✓
136-21-1	2	29.04 ✓	5.81 ✓
136-08-1	1	14.52 ✓	2.90 ✓
136-07-1	12	174.17 ✓	34.83 ✓
138-08-1	3	43.55 ✓	8.71 ✓
	31	450.00	90.00

EMPLOYEE Britton 055

APPROVED P. Dean

AS EXPLORATIONS LIMITED

TIME SHEET

FOR THE MONTH OF AUGUST 19 70

NAME JOHN J. ROCK
 OF WORK EXPL. MANAGER
 OF PAY _____

AT	WORK	OFF	FLD. BNS.	CODING	EXPLANATIONS	
1	✓			07	YUKON OEX - BOSWELL	✓
2	✓			07	YUKON OEX -	✓
3	✓			ADMIN	WHSE	✓
4	✓			07	OWL	✓
5	✓			08	VICTOR OEX	✓
6	✓			09	KLAZAN	✓
7	✓				WIFE - V.C.R.	✓
8		✓				
9		✓				
10	✓			ADMIN	VANCOUVER OFFICE	✓
11	✓			✓	✓	✓
12	✓			✓	✓	✓
13		✓				
14		✓				
15		✓				
16		✓				
17	✓			ADMIN	VANCOUVER OFFICE	✓
18	✓			✓	VANCOUVER - WIFE	✓
19	✓			✓	WIFE	✓
20	✓			07	LORNA	✓
21	✓			07	ROTO	✓
22	✓			07	GRAN	✓
23	✓				WIFE 93-01	✓
24	✓			07	VICTOR NAN	✓
25	✓			09	WIFE KLAZAN	✓
26	✓			ADMIN	WIFE	✓
27	✓			✓	WIFE	✓
28	✓			06	YUKON OEX	✓
29	✓			07	LORNA	✓
30	✓			08	TINTINA OEX	✓
31	✓			02	TINTINA OEX	✓

PAYROLL DEPT. USE ONLY	
_____	@ _____
_____	@ _____
_____	@ _____
GROSS BEFORE BOARD	_____
BOARD	_____
GROSS EARNINGS	_____
DEDUCTIONS	
1) CANADA PENSION	_____
2)	_____
3) INCOME TAX	_____
4) GROUP	_____
5) M.S.A.	_____
6) ACCTS. REC.	_____
7)	_____
8) BOARD	_____
9)	_____
10)	_____
11) MID MONTH ADVANCE	_____
NET PAY	_____

TOTAL	PROJECT	DAYS	PAYROLL DEPT. USE ONLY GROSS BEFORE BOARD	FIELD BONUS
	101-06-1	1	36.00 ✓	-8.00 ✓
	115-07-1	1	36.00 ✓	-8.00 ✓
	101-07-1	2	72.00 ✓	-16.00 ✓
	93-01	7	252.00 ✓	-56.00 ✓
	124-07-1	1	36.00 ✓	-8.00 ✓
	115-08-1	1	36.00 ✓	-8.00 ✓
	138-07-1	1	36.00 ✓	-8.00 ✓
	125-09-1	2	72.00 ✓	-16.00 ✓
	92-01	4	144.00 ✓	-32.00 ✓
	136-07-1	2	72.00 ✓	-16.00 ✓
	139-07-1	1	36.00 ✓	-8.00 ✓
	109-08-1	1	36.00 ✓	-8.00 ✓
	109-02-1	1	36.00 ✓	-8.00 ✓
	25		900.00	200.00

- LABOUR CODING**
- 01 PROPERTY EXAMINATION
 - 02 PROSPECTING
 - 03 STAKING
 - 04 AIRBORN SURVEYS
 - 05 LINE CUTTING
 - 06 GEOLOGY
 - 07 GEOPHYSICS
 - 08 GEOCHEMISTRY
 - 09 DIAMOND DRILLING
 - 10 PHYSICAL WORK
 - 11 ACCESS ROADS
 - 21 CAMP OPERATIONS
 - 91-01 VANC. OFFICE - ADMIN.
 - 92-01 VANC. EXPLORATION OFFICE
 - 1-01 WHITE HORSE BASE
 - 1-01 ROSS RIVER BASE
 - 3-01 GEOCHEM. LAB.
 - 96-01 BULLDOZER

JJR

25

APPROVED

91-01

200.00

NAME JOHN BROCK
 TYPE OF WORK EXPL. MANAGER
 RATE OF PAY _____

FOR THE MONTH OF SEPT. 19 70

DATE	WORK	OFF	FLD. BNS.	CODING	EXPLANATIONS
1	✓			94-01	ROSS RIVER ✓
2	✓			01	GRAN ✓
3	✓			07	LORNA ✓
4	✓			93-01	WHSE ✓
5	✓			93-01	WHSE ✓
6	✓			93-01	WHSE ✓
7	✓			07	KOTO ✓
8	✓			08	TINT OEX ✓
9	✓			07	JEAN ✓
10	✓			07	ANVIL ✓
11	✓			08	ANVIL ✓
12	✓			93-01	WHSE ✓
13	✓			93-01	WHSE ✓
14	✓			09	OWL ✓
15	✓			93-01	WHSE ✓
16	✓			07	ANVIL ✓
17	✓			07	ANVIL ✓
18	✓			93-01	WHSE ✓
19	✓			93-01	WHSE ✓
20	✓			09	CUB ✓
21	✓			93-01	WHSE ✓
22	✓			93-01	WHSE ✓
23	✓			92-01	WHSE - VCR. ✓
24	✓			92-01	VANCOUVER ✓
25	✓				✓ ✓
26	✓				WEEKEND ✓
27	✓				WEEKEND ✓
28	✓			92-01	VANCOUVER ✓
29	✓			✓	✓ ✓
30	✓			✓	✓ ✓
31					

PAYROLL DEPT. USE ONLY	
_____ @ _____	_____
_____ @ _____	_____
_____ @ _____	_____
GROSS BEFORE BOARD	_____
BOARD	_____
GROSS EARNINGS	_____
DEDUCTIONS	
1) CANADA PENSION	_____
2) _____	_____
3) INCOME TAX	_____
4) GROUP	_____
5) M.S.A.	_____
6) ACCTS. REC.	_____
7) _____	_____
8) BOARD	_____
9) _____	_____
10) UIC	_____
11) MID MONTH ADVANCE	_____
NET PAY	=====

LABOUR CODING	
-01	PROPERTY EXAMINATION
-02	PROSPECTING
-03	STAKING
-04	AIRBORN SURVEYS
-05	LINE CUTTING
-06	GEOLOGY
-07	GEOPHYSICS
-08	GEOCHEMISTRY
-09	DIAMOND DRILLING
-10	PHYSICAL WORK
-11	ACCESS ROADS
-21	CAMP OPERATIONS
9 -01	VANC. OFFICE - ADMIN.
92-01	VANC. EXPLORATION OFFICE
93-01	WHITE HORSE BASE
9 -01	ROSS RIVER BASE
9 -01	GEOCHEM. LAB.
9 -01	BULLDOZER

PAYROLL DEPT. USE ONLY			
PROJECT	DAYS	GROSS BEFORE BOARD	FIELD BONUS
94-01 ①	39.29	142-07-1 ③	117.83
139-07-10	39.29	124-09-1 ①	39.29
136-07-10	39.29	131-09-1 ①	39.29
93-01 ⑩	392.87	92-01 ⑥	235.74
138-07-10	39.29		
109-08-10	39.29		
141-07-10	39.29		
142-08-10	39.29		
		<u>28</u>	
			1100.00

EMPLOYEE John Brock

APPROVED _____

JOHN S. BROCK LIMITED

Mining Exploration Services

September 30th, 1970.

In Account with: Atlas Explorations Limited,
330-355 Burrard Street,
Vancouver, B.C.

For Services Rendered:

Account Name	Description	Amount	Reference	Amount
Tintina OEX	Prospecting and geochem	\$100.00	109-07-1	50.00
Roto Claims	Geophysics	50.00	101-05-1	50.00
Lorna Claims	Geophysics	50.00	133-07-1	50.00
Gran Claims	Geophysics	50.00	136-07-1	50.00
Jean Claims	Geophysics	50.00	139-07-1	50.00
Jean Claims	Geophysics	50.00	141-07-1	50.00
Owl Claims	Geophysics	100.00	124-07-1	100.00
Hess OEX	Geochemistry	50.00	102-05-1	50.00
Klazan Claims	Drilling	50.00	125-07-1	50.00
		\$500.00		500.00

SJB

60-999	500 00
TOTAL	500 00
CSA	

John S. Brock

PAID

93-03	12450
-------	-------

PAID



JOHN S. BROCK LIMITED

Mining Exploration Services

September 10, 1970

Mr. C. McQuarrie,
Atlas Explorations Limited,
330-355 Burrard Street,
Vancouver 1, B.C.

Dear Charles:

Breakdown of J.S. Brock Limited time for August is as follows:

Tintina OEX	Geochem	50	107-08-1
Lorna	Geophys	50	133-07-1
Roto	Geophys	50	133-07-1
Gran	Geophys	50	139-07-1
Cub	Geophys	50	131-07-1
Klazan	Drilling	100	125-09-1
Owl	Geophys	100	124-07-1
Bot	Geophys	50	110-07-1

575

TOTAL:

500

PAID

Yours truly,

John S. Brock

60-999 500.00

500.00

John S. Brock

LAS EXPLORATIONS LIMITED TIME SHEET

NAME Louis Corlick
 TYPE OF WORK Sampler
 RATE OF PAY \$20/day

FOR THE MONTH OF August 1970

DATE	WORK	OFF	FLD. BNS.	CODING	EXPLANATIONS
2					
3					
5					
6					
8					
11					
12					
14					
15					
17					
18					
19	✓			136-08	To LORNA
20	✓			08	} WYNA OEX
21	✓			08	
22	✓			08	
23	✓			08	
24	✓			136-05	
25	✓			109-08	
26	✓				
27	✓				
28	✓			109-05	
29	✓			138-05	
30	✓				
31	✓			139-05	

(attached)

PAYROLL DEPT. USE ONLY		
30 da. @ 20/da		600.00
@		
@		
GROSS BEFORE BOARD		600.00
BOARD		75.00
GROSS EARNINGS		675.00
DEDUCTIONS		
1) CANADA PENSION	11.25	
2)		
3) INCOME TAX	138.95	
4) GROUP	-	
5) M.S.A.	-	
6) ACCTS. REC.	102.42	
7)		
8) BOARD	75.00	
9)		
10) UIC	6.06	
11) MID MONTH ADVANCE	-	333.89
NET PAY		341.12

PAID

LABOUR CODING	
-01	PROPERTY EXAMINATION
-02	PROSPECTING
-03	STAKING
-04	AIRBORN SURVEYS
-05	LINE CUTTING
-06	GEOLOGY
-07	GEOPHYSICS
-08	GEOCHEMISTRY
-09	DIAMOND DRILLING
-10	PHYSICAL WORK
-11	ACCESS ROADS
-21	CAMP OPERATIONS
1-01	VANC. OFFICE - ADMIN.
92-01	VANC. EXPLORATION OFFICE
93-01	WHITE HORSE BASE
1-01	ROSS RIVER BASE
5-01	GEOCHEM. LAB.
93-01	BULLDOZER

PAYROLL DEPT. USE ONLY			
PROJECT	DAYS	GROSS BEFORE BOARD	FIELD BONUS
136-08-1	6	120.00 ✓	
138-05-1	2	40.00 ✓	
139-05-1	1	20.00 ✓	
136-05-1	1	20.00 ✓	
109-08-1	3	60.00 ✓	
125-21-1	1	20.00 ✓	
125-03-1	1	20.00 ✓	
134-05-1	4	80.00 ✓	
134-08-1	2	40.00 ✓	
134-21-1	3	60.00 ✓	
✓ 127-08-1	5	100.00 ✓	
✓ 127-21-1	1	20.00 ✓	
	30	602.00	

APPROVED *P. Dean*

EMPLOYEE Corlick

A LAS EXPLORATIONS LIMITED

TIME SHEET

NAME P. DEAN
 TYPE OF WORK PARTY CHIEF
 RATE OF PAY 800 / month

FOR THE MONTH OF August 19 70

DATE	WORK	OFF	FLD. BNS.	CODING	EXPLANATIONS
2	✓		✓	124-07	
2	✓			"	
2	✓			"	OWL
5	✓			"	
5	✓			124-08	
5	✓			124-07	
5	✓			"	
8	✓			124-03 21	
8	✓		✓	124-03	(tags)
11	✓			-07	
11	✓			07	
12	✓			03	(tags)
14	✓			-07	
14	✓			136-21	move to LORNA
15	✓			-08	reccy
17	✓		✓	138-03	(staked, ROTO)
17	✓			136-08	LORNA
17	✓			136-07	LORNA
20	✓			136-07	
20	✓			136-21	
21	✓			136-21	
22	✓			-08	reccy
23	✓		✓	139-03	(G.M.A.)
24	✓			136-05	
26	✓			124-07	
26	✓			138-05	
27	✓			109-08	
28	✓			109-07	
29	✓			138-07	
30	✓		✓	138-21	
31	✓			138-07	

PAYROLL DEPT. USE ONLY		
1 mo @		800.00
@		
@		
GROSS BEFORE BOARD		800.00
BOARD		77.50
GROSS EARNINGS		877.50
DEDUCTIONS		
1) CANADA PENSION	14.90	
2)		
3) INCOME TAX	197.10	
4) GROUP	-	
5) M.S.A.	-	
6) ACCTS. REC.	7.29	
7)		
8) BOARD	77.50	
9)		
10)		
11) MID MONTH ADVANCE		296.79
NET PAY		580.71

TOTAL

PAYROLL DEPT. USE ONLY

PROJECT	DAYS	GROSS BEFORE BOARD	FIELD BONUS
124-07-1	10	258.09 ✓	51.62 ✓
124-08-1	1	25.80 ✓	5.16 ✓
124-21-1	1	25.80 ✓	5.16 ✓
124-03-1	2	51.62 ✓	10.30 ✓
136-21-1	3	77.42 ✓	15.48 ✓
136-08-1	3	77.42 ✓	15.48 ✓
139-03-1	1	25.80 ✓	5.16 ✓
138-03-1	1	25.81 ✓	5.17 ✓
138-07-1	1	25.80 ✓	5.17 ✓
136-05-1	1	25.80 ✓	5.16 ✓
138-05-1	1	25.80 ✓	5.16 ✓
109-07-1	1	25.81 ✓	5.16 ✓
109-08-1	1	25.80 ✓	5.16 ✓
136-07-1	3	77.13 ✓	15.49 ✓
109-21-1	1	25.80 ✓	5.17 ✓

LABOUR CODING	
-01	PROPERTY EXAMINATION
-02	PROSPECTING
-03	STAKING
-04	AIRBORN SURVEYS
-05	LINE CUTTING
-06	GEOLOGY
-07	GEOPHYSICS
-08	GEOCHEMISTRY
-09	DIAMOND DRILLING
-10	PHYSICAL WORK
-11	ACCESS ROADS
-21	CAMP OPERATIONS
-01	VANC. OFFICE - ADMIN.
92-01	VANC. EXPLORATION OFFICE
93-01	WHITE HORSE BASE
-01	ROSS RIVER BASE
-01	GEOCHEM. LAB.
90-01	BULLDOZER

EMPLOYEE P. Dean

APPROVED [Signature] 160.00

NAME P. DEAN
 TYPE OF WORK PARTY CHIEF
 RATE OF PAY 800/m.

FOR THE MONTH OF SEPT 19 70

DATE	WORK	OFF	F.L.D. BNS.	CODING	EXPLANATIONS
2	✓				} ROTO GEOCHEM GEOPHYS.
	✓				
	✓				
	✓				
5	✓				} GRAN LINECUTTING GRAN GEOPHYSICS
	✓	✓			
8					
11					
14					
17					
20					
23					
26	✓				Wheaton Area drifting
29					
TOTAL	7				

PAYROLL DEPT. USE ONLY	
7 da. @ 26.66/da	186.62
@	
@	
GROSS BEFORE BOARD	186.62
BOARD	17.50
GROSS EARNINGS	204.12
DEDUCTIONS	
1) CANADA PENSION	3.47
2)	
3) INCOME TAX	46.50
4) GROUP	-
5) M.S.A.	
6) ACCTS. REC.	11.00
7)	
8) BOARD	17.50
9)	
10) UIC	-
11) MID MONTH ADVANCE	79.47
NET PAY	125.65

- LABOUR CODING**
- 01 PROPERTY EXAMINATION
 - 02 PROSPECTING
 - 03 STAKING
 - 04 AIRBORN SURVEYS
 - 05 LINE CUTTING
 - 06 GEOLOGY
 - 07 GEOPHYSICS
 - 08 GEOCHEMISTRY
 - 09 DIAMOND DRILLING
 - 10 PHYSICAL WORK
 - 11 ACCESS ROADS
 - 21 CAMP OPERATIONS
 - 1-01 VANC. OFFICE - ADMIN.
 - 92-01 VANC. EXPLORATION OFFICE
 - 93-01 WHITE HORSE BASE
 - 1-01 ROSS RIVER BASE
 - 3-01 GEOCHEM. LAB.
 - 96-01 BULLDOZER

PROJECT	DAYS	GROSS BEFORE BOARD	FIELD BONUS
138-07-1	2	53.32	9.15
138-08-1	2	53.32	9.14
137-05-1	1	26.66	4.57
139-07-1	1	26.66	4.57
115-06-1	1	26.66	4.57
	7	186.62	32.00

EMPLOYEE P. Dean 0601

APPROVED [Signature]

ATLAS EXPLORATIONS LIMITED

TIME SHEET

NAME G. GRAY
 TYPE OF WORK Geophysicist
 RATE OF PAY (6.57) / month

FOR THE MONTH OF September 1970

DATE	WORK	OFF	FLD. BNS.	CODING	EXPLANATIONS
1	✓			136-21	
2	✓			136-21	
3	✓			137-21	
4	✓			137-21	
5	✓			138-21	
6	✓			138-21	
7	✓			TRAV 21	OUT TO ROSS RIVER, LAID OFF BECAUSE OF HEATH
8					
9					
10					
11					
12					
13					
14					
15					
16					
17					
18					
19					
20					
21					
22					
23					
24					
25					
26					
27					
28					
29					
30					
31					
TAL					

PAYROLL DEPT. USE ONLY	
7 da. @ 21.66/da	151.62
_____ @ _____	_____
_____ @ _____	_____
GROSS BEFORE BOARD	151.62
BOARD	17.50
GROSS EARNINGS	169.12
DEDUCTIONS	
1) CANADA PENSION	2.84
2)	_____
3) INCOME TAX	35.65
4) GROUP	_____
5) M.S.A.	_____
6) ACCTS. REC.	1.95
7)	_____
8) BOARD	17.50
9)	_____
10) UIC	1.40
11) MID MONTH ADVANCE	59.34
NET PAY	109.78

- LABOUR CODING**
- 01 PROPERTY EXAMINATION
 - 02 PROSPECTING
 - 03 STAKING
 - 04 AIRBORN SURVEYS
 - 05 LINE CUTTING
 - 06 GEOLOGY
 - 07 GEOPHYSICS
 - 08 GEOCHEMISTRY
 - 09 DIAMOND DRILLING
 - 00 PHYSICAL WORK
 - 11 ACCESS ROADS
 - 21 CAMP OPERATIONS
 - 91- 1 VANC. OFFICE - ADMIN.
 - 92- 1 VANC. EXPLORATION OFFICE
 - 93-01 WHITE HORSE BASE
 - 94-01 ROSS RIVER BASE
 - 95-01 GEOCHEM. LAB.
 - 96- 1 BULLDOZER

PROJECT	DAYS	GROSS BEFORE BOARD	FIELD BONUS
136-21-1	2	43.32 ✓	_____
138-21-1	2	43.32 ✓	
139-21-1	3	64.98 ✓	
_____	_____	_____	_____
_____	_____	_____	_____
_____	_____	_____	_____
_____	_____	_____	_____
_____	_____	_____	_____
_____	_____	_____	_____
_____	7	151.62	_____

PAID

PL YEE Gray 027

APPROVED [Signature]

NAME E. Kane
 TYPE OF WORK line cutter
 RATE OF PAY 20 \$ / day

FOR THE MONTH OF August 19 70

DATE	WORK	OFF	FLD. BNS.	CODING	EXPLANATIONS
1	✓			-03	} staking LORNA
2	✓			-03	
3	✓			-03	
4	✓			124-05	to OWL
5	✓			"	
6	✓			"	
7	✓			"	
8	✓			"	
9	✓			"	
10	✓			"	
11	✓			"	
12	✓			"	
13	✓			124-05	
14	✓			136-21	move to LORNA
15	✓			-03	staked GRAN
16	✓			-03	" ROTO
17	✓			136-05	(LORNA)
18	✓			136-05	"
19	✓			136-05	
20	✓			136-05	
21	✓			138-05	ROTO
22	✓			-05	"
23	✓			-05	"
24	✓			-05	terminates
25					
26					
27					
28					ADVANCE #142 - 100 ⁰⁰
29					ALSO " #144 - 100 ⁰⁰
30					
31					

PAYROLL DEPT. USE ONLY	
24 da. @ 20/da.	480.00
@	
@	
GROSS BEFORE BOARD	480.00
BOARD	60.00
GROSS EARNINGS	540.00
DEDUCTIONS	
1) CANADA PENSION	8.82
2)	
3) INCOME TAX	103.15
4) GROUP	-
5) M.S.A.	-
6) ACCTS. REC.	225.19
7)	
8) BOARD	60.00
9)	
10)	6.06
11) MID MONTH ADVANCE	403.22
NET PAY	136.78

DATE 24

LABOUR CODING	
-01	PROPERTY EXAMINATION
-02	PROSPECTING
-03	STAKING
-04	AIRBORN SURVEYS
-05	LINE CUTTING
-06	GEOLOGY
-07	GEOPHYSICS
-08	GEOCHEMISTRY
-09	DIAMOND DRILLING
-10	PHYSICAL WORK
-11	ACCESS ROADS
-21	CAMP OPERATIONS
91-01	VANC. OFFICE - ADMIN.
92-01	VANC. EXPLORATION OFFICE
9-01	WHITE HORSE BASE
9-01	ROSS RIVER BASE
95-01	GEOCHEM. LAB.
96-01	BULLDOZER

PAYROLL DEPT. USE ONLY			
PROJECT	DAYS	GROSS BEFORE BOARD	FIELD BONUS
136-03-1	3	60.00 ✓	
124-05-1	10	200.00 ✓	
136-21-1	1	20.00 ✓	
139-03-1	1	20.00 ✓	
138-03-1	1	20.00 ✓	
136-05-1	4	80.00 ✓	
138-05-1	4	80.00 ✓	
		480.00	
		24	

EMPLOYEE Kane 115 APPROVED P. Deon

Albert MacLeod
Linecutter
20 \$ / day.

WORK
OF PAY

DATE	WORK	OFF	FLD. BNS.	CODING	EXPLANATIONS
3					
6					
9					
12					
15	✓			136-05	As LORNA
16	✓			136-05	(LORNA)
18	✓			136-05	(LORNA)
19	✓			136-05	
20	✓			136-05	
21	✓			136-05	
22	✓			136-05	
23	✓			ROTO-05	
24	✓				
25	✓				
26	✓				
27	✓				
28	✓				TERMINATED
29	✓				
30	✓				

PAYROLL DEPT. USE ONLY		
16 hrs @ 20/day		320.00
@		
@		
GROSS BEFORE BOARD		320.00
BOARD		40.00
GROSS EARNINGS		360.00
DEDUCTIONS		
1) CANADA PENSION	6.03	
2)		
3) INCOME TAX	59.15	
4) GROUP	-	
5) M.S.A.	-	
6) ACCTS. REC.	65.43	
7)		
8) BOARD	40.00	
9)		
10) S	3.03	
11) MID MONTH ADVANCE		173.44
NET PAY		186.06

CANADA

PAID

LABOUR CODING

- 01 PROPERTY EXAMINATION
- 02 PROSPECTING
- 03 STAKING
- 04 AIRBORN SURVEYS
- 05 LINE CUTTING
- 06 GEOLOGY
- 07 GEOPHYSICS
- 08 GEOCHEMISTRY
- 09 DIAMOND DRILLING
- 10 PHYSICAL WORK
- 11 ACCESS ROADS
- 21 CAMP OPERATIONS
- 01 VANC. OFFICE - ADMIN.
- 01 VANC. EXPLORATION OFFICE
- 93-01 WHITE HORSE BASE
- 94-01 ROSS RIVER BASE
- i-01 GEOCHEM. LAB.
- i-01 BULLDOZER

PROJECT	DAYS	GROSS BEFORE BOARD	FIELD BONUS

Prepared by
Cancelled
Payroll Department

8

LOCATIONS LIMITED

TIME SHEET

Albert McLeod

FOR THE MONTH OF August 19 70

WORK _____
OF PAY _____

DATE	WORK	OFF	FLD. BNS.	CODING	EXPLANATIONS
2					
5					
8					
11					
14					
17	✓				
	✓				
20	✓				
	✓				
23	✓				
	✓				
26	✓				
	✓				
29					
3					
3					

See Attached

PAYROLL DEPT. USE ONLY		
<u>13 da.</u>	@	<u>20 lda</u> <u>260.00</u>
_____	@	_____
_____	@	_____
GROSS BEFORE BOARD		<u>260.00</u>
BOARD		<u>32.50</u>
GROSS EARNINGS		<u>292.50</u>
DEDUCTIONS		
1) CANADA PENSION	<u>4.82</u>	
2)		
3) INCOME TAX	<u>39.40</u>	
4) GROUP	-	
5) M.S.A.	-	
6) ACCTS. REC.	<u>82.43</u>	
7)		
8) BOARD	<u>32.50</u>	
9)		
10) UIC	<u>3.03</u>	
11) MID MONTH ADVANCE	-	<u>162.18</u>
NET PAY		<u>130.32</u>

TOTAL

PAYROLL DEPT. USE ONLY

PROJECT	DAYS	GROSS BEFORE BOARD	FIELD BONUS
<u>136-05-1</u>	<u>7</u>	<u>140.00</u> ✓	
<u>136-21-1</u>	<u>1</u>	<u>20.00</u> ✓	
<u>132-05-1</u>	<u>5</u>	<u>100.00</u> ✓	
_____	_____	_____	
_____	_____	_____	
_____	_____	_____	
_____	_____	_____	
_____	_____	_____	
_____	_____	_____	
_____	<u>13</u>	<u>260.00</u>	

PAID

- LABOUR CODING
- 01 PROPERTY EXAMINATION
 - 02 PROSPECTING
 - 03 STAKING
 - 04 AIRBORN SURVEYS
 - 05 LINE CUTTING
 - 06 GEOLOGY
 - 07 GEOPHYSICS
 - 08 GEOCHEMISTRY
 - 09 DIAMOND DRILLING
 - 10 PHYSICAL WORK
 - 11 ACCESS ROADS
 - 21 CAMP OPERATIONS
 - 91-01 VANC. OFFICE - ADMIN.
 - 92-01 VANC. EXPLORATION OFFICE
 - 93-01 WHITE HORSE BASE
 - 1-01 ROSS RIVER BASE
 - 5-01 GEOCHEM. LAB.
 - 96-01 BULLDOZER

EMPLOYEE A. McLeod 052

APPROVED CA

A LAS EXPLORATIONS LIMITED

TIME SHEET

NAME Sam McLeod
 TYPE OF WORK Sampler
 R. E. OF PAY \$20 per day

FOR THE MONTH OF August 1970

DATE	WORK	OFF	FLD. BNS.	CODING	EXPLANATIONS
2					
3					
5					
6					
8					
9					
11					
12					
14					
15					
17					
18					
19	✓			109-08	to LORNA
20	✓			"	"
21	✓			"	"
22	✓			"	"
23	✓			138-05	ROTO
24	✓				
25	✓				
26	✓				
27	✓				
28	✓				
29	✓				
30	✓				
31	✓			139-05	

PAYROLL DEPT. USE ONLY		
<u>13 da.</u>	@ <u>20/da.</u>	<u>260.00</u>
_____	@ _____	_____
_____	@ _____	_____
GROSS BEFORE BOARD		<u>260.00</u>
BOARD		<u>30.50</u>
GROSS EARNINGS		<u>292.50</u>
DEDUCTIONS		
1) CANADA PENSION	<u>4.82</u>	_____
2)	_____	_____
3) INCOME TAX	<u>18.15</u>	_____
4) GROUP	_____	_____
5) M.S.A.	_____	_____
6) ACCTS. REC.	_____	_____
7)	_____	_____
8) BOARD	<u>30.50</u>	_____
9)	_____	_____
10) 2	<u>2.80</u>	_____
11) MID MONTH ADVANCE	_____	<u>58.27</u>
NET PAY		<u>234.23</u>

TOTAL

PAYROLL DEPT. USE ONLY			
PROJECT	DAYS	GROSS BEFORE BOARD	FIELD BONUS
<u>109-08-1</u>	<u>4</u>	<u>80.00</u> ✓	_____
<u>138-05-1</u>	<u>9</u>	<u>160.00</u> ✓	_____
<u>139-05-1</u>	<u>1</u>	<u>20.00</u> ✓	_____
_____	_____	_____	_____
_____	_____	_____	_____
_____	_____	_____	_____
_____	_____	_____	_____
_____	_____	_____	_____
_____	<u>13</u>	<u>260.00</u>	_____

- LABOUR CODING**
- 01 PROPERTY EXAMINATION
 - 02 PROSPECTING
 - 03 STAKING
 - 04 AIRBORN SURVEYS
 - 05 LINE CUTTING
 - 06 GEOLOGY
 - 07 GEOPHYSICS
 - 08 GEOCHEMISTRY
 - 09 DIAMOND DRILLING
 - 10 PHYSICAL WORK
 - 11 ACCESS ROADS
 - 21 CAMP OPERATIONS
 - 01 VANC. OFFICE - ADMIN.
 - 92-01 VANC. EXPLORATION OFFICE
 - 93-01 WHITE HORSE BASE
 - 01 ROSS RIVER BASE
 - 01 GEOCHEM. LAB.
 - 01 BULLDOZER

EMPLOYEE S. McLeod 097

APPROVED P Deon

A LAS EXPLORATIONS LIMITED

TIME SHEET

NAME S McAleer
 TYPE OF WORK Linecutter
 RATE OF PAY \$ 20/day

FOR THE MONTH OF September 1970

DATE	WORK	OFF	F.L.O. BNS.	CODING	EXPLANATIONS
2	✓			139-05-1	
2	✓			139-08-1	
2	✓			136-05-1	
2	✓			136-21-1	
5	✓			142-05-1	
5	✓			142-08-1	
5	✓			142-21-1	
8	✓			138-05-1	
8	✓			136-21-1	
8	✓			142-05-1	
11	✓			Sun-Tue-05-1	
11	✓			Sun-Tue-08-1	
12	✓			Sun-Tue-03-1	
14	✓				
14	✓				
14	✓				
17	✓				
17	✓				
17	✓				
20	✓			Sun-Tue-05-1	
20	✓			Sun-Tue-08-1	
21	✓			Sun-Tue-03-1	1/2 day Terminated
22					
23					
24					
26					
26					
26					
29					Hong Kong 2302-9-70 26 1 per extra deck 1.75
30					
30					
30					
TOTAL					

PAYROLL DEPT. USE ONLY	
20 1/2 da @ 20/day	410.00
@	
@	
GROSS BEFORE BOARD	410.00
BOARD	51.25
GROSS EARNINGS	461.25
DEDUCTIONS	
1) CANADA PENSION	7.85
2)	
3) INCOME TAX	1.29
4) GROUP	-
5) M.S.A.	-
6) ACCTS. REC.	11.00
7)	
8) BOARD	51.25
9)	
10) UIC 3	11.20
11) MID MONTH ADVANCE	-
NET PAY	323.05

PAID

- LABOUR CODING**
- 01 PROPERTY EXAMINATION
 - 02 PROSPECTING
 - 03 STAKING
 - 04 AIRBORN SURVEYS
 - 05 LINE CUTTING
 - 06 GEOLOGY
 - 07 GEOPHYSICS
 - 08 GEOCHEMISTRY
 - 09 DIAMOND DRILLING
 - 10 PHYSICAL WORK
 - 11 ACCESS ROADS
 - 21 CAMP OPERATIONS
 - 01 VANC. OFFICE - ADMIN.
 - 92-01 VANC. EXPLORATION OFFICE
 - 93-01 WHITE HORSE BASE
 - 1-01 ROSS RIVER BASE
 - i-01 GEOCHEM. LAB.
 - 96-01 BULLDOZER

PROJECT	DAYS	GROSS BEFORE BOARD	FIELD BONUS
139-05-1	4	80.00	
139-08-1	2	40.00	
136-05-1	1	20.00	
136-21-1	1	20.00	
142-05-1	9	180.00	
142-08-1	1/2	30.00	
142-21-1	1	20.00	
138-05-1	1	20.00	
	20 1/2	410.00	

EMPLOYEE S McAleer John 097

APPROVED [Signature]

NAME

G. Shackoon

FOR THE MONTH OF August 1970

TYP OF WORK

linecutter

RAT OF PAY

20\$ per day.

ATT	WORK	OFF	FLD. BNS.	CODING	EXPLANATIONS
1	✓			-03	} staked LORNA
2	✓			-03	
3	✓			-03	
4	✓			124-05	to OWL
5	✓			4	
6	✓			4	
7	✓			4	
8	✓			4	
9	✓			4	
10	✓			4	
11	✓			4	
12	✓			4	
13	✓			124-05	
14	✓			* -21	to LORNA
15	✓			-03	staked GRAN
16	✓			-03	staked ROTO
17	✓			136-05	(LORNA)
18	✓			136-05	"
19	✓			136-05	"
20	✓			136-05	"
21	✓			138 05	ROTO
22	✓				
23	✓				
24	✓				
25	✓				
26	✓				
27	✓				
28	✓				
29	✓				
30	✓				
31	✓			136-05	

PAYROLL DEPT. USE ONLY	
31 da. @ 20 da	620.00
@	
@	
GROSS BEFORE BOARD	620.00
BOARD	77.50
GROSS EARNINGS	697.50
DEDUCTIONS	
1) CANADA PENSION	11.66
2)	
3) INCOME TAX	144.30
4) GROUP	-
5) M.S.A.	-
6) ACCTS. REC.	39.44
7)	
8) BOARD	77.50
9)	
10)	6.06
11) MID MONTH ADVANCE	278.96
NET PAY	418.54

LABOUR CODING	
-01	PROPERTY EXAMINATION
-02	PROSPECTING
-03	STAKING
-04	AIRBORN SURVEYS
-05	LINE CUTTING
-06	GEOLOGY
-07	GEOPHYSICS
-08	GEOCHEMISTRY
-09	DIAMOND DRILLING
-10	PHYSICAL WORK
-11	ACCESS ROADS
-21	CAMP OPERATIONS
91-01	VANC. OFFICE - ADMIN.
92-01	VANC. EXPLORATION OFFICE
93-01	WHITE HORSE BASE
94-01	ROSS RIVER BASE
95-01	GEOCHEM. LAB.
96-01	BULLDOZER

PAYROLL DEPT. USE ONLY

PROJECT	DAYS	GROSS BEFORE BOARD	FIELD BONUS
136-03-1	3	60.00 ✓	
124-05-1	10	200.00 ✓	
136-21-1	1	20.00 ✓	
139-03-1	1	20.00 ✓	
138-03-1	1	20.00 ✓	
136-05-1	5	100.00 ✓	
138-05-1	10	200.00 ✓	
	31	620.00	

EMPLOYEE Shackoon 114

APPROVED P. Deon

ATLAS EXPLORATIONS LIMITED

TIME SHEET

NAME A. Shackleton
 TYPE OF WORK _____
 RATE OF PAY _____

FOR THE MONTH OF Sept 19 70

DATE	WORK	OFF	FLD. BNS.	CODING	EXPLANATIONS
1	/			129-05-1	
2	/			-	
3	/			-	
4	/			-	
5	-			138-05-1	
6	-			136-05-1	
7	-			141-03-1	
8	-			-	
9	-			138-21-1	
10	-			142-05-1	
11	-			-	
12	-			-	
13	-			-	
14	-			142-21-1	
15	-			142-08-1	
16	/			142-05-1	
17					TERMINATED
18					
19					
20					
21					490 to follow
22					
23					
24					
25					
26					
27					
28					
29					
30					
31					
TOTAL					

PAYROLL DEPT. USE ONLY		
15 1/2 da @	20 da	310.00
_____ @	_____	_____
_____ @	_____	_____
GROSS BEFORE BOARD		310.00
BOARD		38.75
GROSS EARNINGS		348.75
DEDUCTIONS		
1) CANADA PENSION	5.83	
2)		
3) INCOME TAX	72.15	
4) GROUP	-	
5) M.S.A.	-	
6) ACCTS. REC.	11.90	
7)		
8) BOARD	38.75	
9)		
10) UIC	3.03	
11) MID MONTH ADVANCE	-	289.46
NET PAY		59.26

PAID

LABOUR CODING	
-01	PROPERTY EXAMINATION
-02	PROSPECTING
-03	STAKING
-04	AIRBORN SURVEYS
-05	LINE CUTTING
-06	GEOLOGY
-07	GEOPHYSICS
-08	GEOCHEMISTRY
-09	DIAMOND DRILLING
-10	PHYSICAL WORK
-11	ACCESS ROADS
-21	CAMP OPERATIONS
-01	VANC. OFFICE - ADMIN.
92-01	VANC. EXPLORATION OFFICE
93-01	WHITE HORSE BASE
-01	ROSS RIVER BASE
-01	GEOCHEM. LAB.
99-01	BULLDOZER

PROJECT	DAYS	GROSS BEFORE BOARD	FIELD BONUS
136-05-1	1	20.00 ✓	
138-05-1	1	20.00 ✓	
138-21-1	1	20.00 ✓	
139-05-1	4	80.00 ✓	
141-03-1	2	40.00 ✓	
142-05-1	4	80.00 ✓	
142-08-1	1 1/2	30.00 ✓	
142-21-1	1	20.00 ✓	
	15 1/2	310.00	

EMP. LOYEE A. Shackleton 114

APPROVED [Signature]

NAME Ron Townsend
 TYPE OF WORK Field Assistant
 GRADE OF PAY _____

FOR THE MONTH OF August 1970

DATE	WORK	OFF	FLD. BNS.	CODING	EXPLANATIONS
1	✓				
2	✓		✓		
3	✓				
4	✓				
5	✓				
6	✓				
7	✓				
8	✓				
9	✓		✓		
10	✓				
11	✓				
12	✓				
13	✓				
14	✓				
15	✓				
16	✓				
17	✓				
18	✓				
19	✓				
20	✓			136-08	LORNA
21	✓			136-08	reccy
22	✓			-08	
23	✓	✓		-08	
24	✓			138-07	
25	✓			138-08	
26	✓			138-07	
27	✓			138-08	
28	✓			109-07	
29	✓			109-21	
30	✓				
31	✓				terminated - travel to Vancouver August.

Max - see next sheet.

PAYROLL DEPT. USE ONLY	
Imo @	500.00
@	
@	
GROSS BEFORE BOARD	500.00
BOARD	77.50
GROSS EARNINGS	577.50
DEDUCTIONS	
1) CANADA PENSION	9.50
2)	
3) INCOME TAX	111.75
4) GROUP	-
5) M.S.A.	-
6) ACCTS. REC.	7.84
7)	
8) BOARD	77.50
9)	
10)	6.06
11) MID MONTH ADVANCE	22.65
NET PAY	364.85

LABOUR CODING	
-01	PROPERTY EXAMINATION
-02	PROSPECTING
-03	STAKING
-04	AIRBORN SURVEYS
-05	LINE CUTTING
-06	GEOLOGY
-07	GEOPHYSICS
-08	GEOCHEMISTRY
-09	DIAMOND DRILLING
-10	PHYSICAL WORK
-11	ACCESS ROADS
-21	CAMP OPERATIONS
91-01	VANC. OFFICE - ADMIN.
92-01	VANC. EXPLORATION OFFICE
93-01	WHITE HORSE BASE
94-01	ROSS RIVER BASE
95-01	GEOCHEM. LAB.
96-01	BULLDOZER

PAYROLL DEPT. USE ONLY			
PROJECT	DAYS	GROSS BEFORE BOARD	FIELD BONUS
133-08-1	3	48.39 ✓	9.68 ✓
133-21-1	6	96.77 ✓	19.35 ✓
133-03-1	2	32.26 ✓	6.45 ✓
133-05-1	7	112.90 ✓	22.58 ✓
136-08-1	5	80.64 ✓	16.13 ✓
138-08-1	3	48.39 ✓	9.68 ✓
138-07-1	1	16.13 ✓	3.22 ✓
109-21-1	3	48.39 ✓	9.69 ✓
109-07-1	1	16.13 ✓	3.22 ✓
	<u>31</u>	<u>500.00</u>	<u>100.00</u>

EMPLOYEE Townsend 038

APPROVED P. Deon

ROTS REPORT WRITING COST

SCHEDULE "B"

	BASIC WAGE	NON WAGE LABOR COSTS 12%	TOTAL
GEOLOGY	100.00	12.00	112.00
GEO PHYSICS	50.00	6.00	56.00
GEO CHEM.	50.00	6.00	56.00

NAME W. Roberts
 TYPE OF WORK _____
 RATE OF PAY _____

FOR THE MONTH OF February 19 71

DATE	WORK	OFF	FLD. BNS.	CODING	EXPLANATIONS
2					
3					
5					
6					
8					
9					
11					
12					
14					
15					
17					
18					
20					
21					
22					
23					
24					
26					
27					
29					
30					
31					

PAYROLL DEPT. USE ONLY	
<u>Inc</u> @ _____	<u>1000.00</u>
_____ @ _____	_____
_____ @ _____	_____
GROSS BEFORE BOARD	_____
BOARD	_____
GROSS EARNINGS	<u>1000.00</u>
DEDUCTIONS	
1) CANADA PENSION	<u>17.10</u>
2)	_____
3) INCOME TAX	<u>241.15</u>
4) GROUP	<u>3.24</u>
5) M.S.A.	<u>2.95</u>
6) ACCTS. REC.	_____
7)	_____
8) BOARD	<u>1</u>
9)	_____
10)	<u>12.12 (Jan Feb)</u>
11) MID MONTH ADVANCE	<u>360.00</u> <u>36.56</u>
NET PAY	<u>363.44</u>

LABOUR CODING
-01 PROPERTY EXAMINATION
-02 PROSPECTING
-03 STAKING
-04 AIRBORN SURVEYS
-05 LINE CUTTING
-06 GEOLOGY
-07 GEOPHYSICS
-08 GEOCHEMISTRY
-09 DIAMOND DRILLING
-10 PHYSICAL WORK
-11 ACCESS ROADS
-21 CAMP OPERATIONS
-01 VANC. OFFICE - ADMIN.
92-01 VANC. EXPLORATION OFFICE
93-01 WHITE HORSE BASE
-01 ROSS RIVER BASE
-01 GEOCHEM. LAB.
-01 BULLDOZER

PROJECT	DAYS	GROSS BEFORE BOARD	FIELD BONUS
<u>109-06-1</u>	<u>8</u>	<u>400.00</u> ✓	_____
<u>136-06-1</u>	<u>2</u>	<u>100.00</u> ✓	_____
<u>136-07-1</u>	<u>1</u>	<u>50.00</u> ✓	_____
<u>136-08-1</u>	<u>1</u>	<u>50.00</u> ✓	_____
<u>138-06-1</u>	<u>2</u>	<u>100.00</u> ✓	_____
<u>138-07-1</u>	<u>1</u>	<u>50.00</u> ✓	_____
<u>139-06-1</u>	<u>1</u>	<u>50.00</u> ✓	_____
<u>139-07-1</u>	<u>1</u>	<u>50.00</u> ✓	_____
<u>141-06-1</u>	<u>2</u>	<u>100.00</u> ✓	_____
<u>141-07-1</u>	<u>1</u>	<u>50.00</u> ✓	_____
	<u>20</u>		

EMPLOYEE Roberts

107

APPROVED [Signature]

ATLAS EXPLORATIONS LIMITED

330 MARINE BUILDING
 355 BURRARD STREET
 VANCOUVER 1, B.C.

SCHEDULE "C"

October 7th, 1970.

PROGRESS REPORT - GEOCHEM LAB, WHITEHORSE

PERIOD - September, 1970.

Calculation of Costs

Sample Preparation per sample	\$0.20
1st Element Determination	1.00
2nd Element Determination	0.25
3rd Element Determination	0.25
4th Element Determination	<u>0.50</u>

Cost per Sample - \$2.20

Water samples calculated at \$1.00 per sample determination (1) and 25¢ per determination thereafter.

101 - General OEX - Yukon

25 samples @ \$2.20 - 4 elements	55.00
46 samples @ \$1.70 - 3 elements	<u>78.20</u>

133.20

101 - General OEX - Yukon - (Boswell Pine)

152 samples @ \$1.70 - 3 elements

258.40

391.60 }
 133.20
 258.40

102 - Hess OEX

173 samples @ \$1.70 - 3 elements

294.10

109 - Tintina OEX

934 samples @ \$1.70 - 3 elements

(1,587.80

109 - <u>Tintina OEX (Livna)</u>			
	902 samples @ \$1.70 - 3 elements	1,533.40	
	7 H2O samples @ \$1.50 - 3 elements	<u>10.50</u>	
			3131.70 (1,543.90)
115 - <u>Victor OEX - Nansen</u>			
	591 samples @ \$1.70 - 3 elements		
115 - <u>Victor OEX - Ann</u>			
	88 samples @ \$1.70 - 3 elements	149.60	
	88 samples @ \$1.45 - 2 elements	<u>127.60</u>	
			1281.90 } 1,004.70
			277.20
127 - <u>Oats</u>			
	2 samples @ \$1.70 - 3 elements		3.40
131 - <u>Cub</u>			
	4 samples @ \$1.70 - 3 elements		6.80
132 - <u>Tantalus Coal</u>			
	7 samples @ \$1.70 - 3 elements		11.90
134 - <u>Mim</u>			
	1 sample @ \$1.70 - 3 elements		1.70
136 - <u>Lorna</u>			
	216 samples @ \$1.70 - 3 elements		367.20
138 - <u>Roto</u>			
	114 samples @ \$1.70 - 3 elements		193.80
139 - <u>Gran</u>			
	246 samples @ \$1.70 - 3 elements		<u>418.20</u>
			<u>\$6,102.30</u>
			TOTAL COST
Total Samples:	25 soils @ \$2.20	\$ 55.00	
	3476 soils @ \$1.70	5,909.20	
	88 soils @ \$1.45	127.60	
	7 H2O @ \$1.50	<u>10.50</u>	
	Total Cost Check	\$6,102.30	

Respectfully submitted,

October 7, 1970

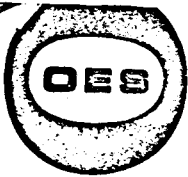
B. A. Spanier,
Chief Technician

KOTO EXPENSE SUMMARY

SCHEDULE "D"

CAMP COSTS

		GROCERIES	OTHER SUPPLIES	GEOPHYSICS	ROTARY WIND
EXPLOSIVES LTD.			1411		
OVERLAND EXPLORATION				98000	
TAYLOR AND DRURY		16882	3683		
T.N.T.A.					110864
ATLAS FUEL					16947
WHITE PASS PETRO.					1111
COST OF SUPPLIES FROM GENERAL ORE					
EST. \$6.00/MAN DAY					
74 MAN/DAY @ \$6.00		44000			
		60882	5094	98000	128922/86.
Resisting cost for 5 man base @ 10.00		5000			
Helicopter 3 hr @ 14.11/hr					4834
TOTAL.		55882	5094	98000	124088
		609.76			
ADD: CAMP WAGES		41116			
		<u>102092</u>			
DISTRIBUTION					
GEOLOGY	119.21 1446.25	84.15			10228
GEOPHYSICS	1060.69 1446.25	748.75		98000	91007
GEOCHEM.	266.31 1446.25	188.02			22853
		1020.92		98000	124088



EXPLORATION SERVICES (1969) LTD.

1347 - 12th AVENUE S.W.
CALGARY 3, ALBERTA, CANADA

TELEPHONE
403 - 244-2191

MAGNETICS
I.P. SURVEYS
RADIO ACTIVE SURVEYS
DRILLING
LINE CLEAN UP
LINE CUTTING
GEOLOGY

October 26th, 1970

RECEIVED
OCT 29 1970

Mr. C.A. Malish
Accounting Department
Atlas Explorations Limited
355 Burrard Street
VANCOUVER 1, B.C.

Dear Mr. Malish:

Here is a breakdown of expenses for each Claim Group worked in the 1970 season.

137	GRAN	\$1,430.00
141	JEAN	\$ 260.00
138	ROTO	\$ 980.00 ✓
<u>avail.</u> →	SUN	\$1,970.00 ✓
124	OWL	\$1,740.00 ✓
136	LORNA	\$1,220.00 ✓
	TOTAL	<u>\$7,600.00</u>

ACCOUNT	AMOUNT		
137 137-07-2	1970	00	
124-01-2	1740	00	
136-07-2	1220	00	
138-07-2	980	00	
139-07-2	1430	00	
141-07-2	260	00	
TOTAL	7600	00	
ADDS. + EXTENS.	CODING	O.K. TO PAY	POSTED

We hope this will be of some assistance.

Yours truly,

OVERLAND EXPLORATION
SERVICES (1969) LTD.

W.T. Salt

W.T. Salt

PAID

WTS/jp

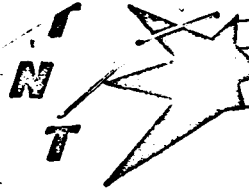
0234H1 4503

SALESMAN <i>H. H.</i>		TAYLOR & DRURY LIMITED P.O. BOX 1169, Whitehorse, Y.T.		
DEPARTMENT D.	DATE Aug 24/76			CUSTOMER NAME Atlas Exploration
PURCHASE ORDER NO. 3728-A		INVOICE NUMBER 36627	CUSTOMER NUMBER 2501	I
QUANTITY	ARTICLE	PRICE	AMOUNT	
6	disk clothes.	@ 39	2.34	
(Project Dean)		G/L No.	PAID	
		CHECKED BY		

ACCOUNT	AMOUNT		
138 21-3	2.34		
TOTAL	2.34		
JDS. + TENS	CODING	O.K. TO PAY	POSTED
ms	<i>[Signature]</i>	<i>[Signature]</i>	<i>[Signature]</i>

00 T

3	3	1	1	0	+	
1	5	2	4	8	+	
	5	7	6	0	+	
2	3	0	3	5	+	
3	3	6	4	1	+	
		1	4	3	0	-
1	1	0	8	6	4	T



TRANS NORTH TURBO AIR LTD.



BOX 1977 PHONE 668-2177
WHITEHORSE, YUKON

RECEIVED
SEP 13 1970

TO: [

Atlas Explorations Ltd.
330 Marine Building
355 Burrard Street
VANCOUVER 1, B.C.

DATE August 31, 1970

INVOICE NO. 638-70

P.O. NO.

TO: Charge you with the charter of Bell 47G-3B-2
Helicopter CF-QJX
Crew: Armand and Engst

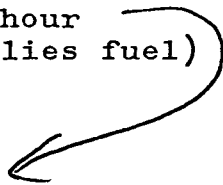
FLYING: August 20 to 28, 1970
Daily Flight Report Nos. 3424, 3425, 3429,
3430, 3431

5.7 hours at \$155.00 per hour \$ 883.50
(rate when carrier supplies fuel)

4.9 hours at \$144.00 per hour 705.60
(rate when charterer supplies fuel)

INVOICE TOTAL \$1,589.10

*credit received
- 721-70
for 11.00 per hr.
all 8 hours
fuel.*



ACCOUNT	AMOUNT
109-22-3	915 80
136-22-3	198 20
138-22-3	331 10
139-22-3	144 00
TOTAL	1589 10
ADDS. + EXTENS.	CODING
O.K. TO PAY	POSTED

One per cent interest per month will be charged on all invoices not paid within 30 days of date issued.

Atlas repaid all TNIA fuel at Anvil ∴ no fuel charge.

Atlas fuel charge

109 -	6.1
136 -	1.3
138	2.2
139	1.0
<hr/>	
	10.6

*TNTIA
PAID*

Bell 47G-3B-1 Helicopter CF-VUE
Crew: Plaster and McKnight

FLYING: August 29 and 30, 1970
Daily Flight Report Nos. 4850, 4851

5.6 hours at \$100.00 per hour \$ 560.00
(rate per hour - hours over 80 per month when charterer supplies fuel)

PLUS: Four cases Aeroshell W80 oil supplied by TNTA at \$18.00 per case 72.00

PLUS: Costs incurred by TNTA to establish fuel cache for you as per attached White Pass invoice #874187 68.81⁵

PLUS: Trucking charges on above - 98 miles at 50¢ per mile 49.00

SUB TOTAL 14,945.51

LESS: Minimum charges for fourth contract month billed on our invoice 477-70 11,700.00

115 - 5,850.00
133 - 5,850.00

INVOICE TOTAL \$ 3,245.51

NOTE: Total hours flown on this contract to August 31, 1970 - 587.8

PAID

Average Cost = $\frac{14,945.51}{122.6}$
= \$121.9046/hr.

ACCOUNT	AMOUNT
119-22-3	828 95
115-22-3	4560 65
14-22-3	853 33
125-22-3	475 43
13-22-3	<4691 90>
104-22-3	377 90
TOTAL	
ADDS. + TENS.	CODING
O.K. TO PAY	POSTED

ACCOUNT	AMOUNT
137-22-3	390 10
138-22-3	158 48
18-004	292 57
TOTAL	3245 51
ADDS. + EXTENS.	CODING
O.K. TO PAY	POSTED

month will be not paid within

1.3 hr.

ALL AS FUEL

T
N
T



TRANS NORTH TURBO AIR LTD.



BOX 1977 PHONE 668-2177
WHITEHORSE, YUKON

RECEIVED
SEP 13 1970

TO: Atlas Explorations Ltd.
330 Marine Building
355 Burrard Street
VANCOUVER 1, B.C.

DATE August 31, 1970

INVOICE NO. 607-70

P.O. NO.

TO: Charge you with the charter of Bell 47G-3B-1
Helicopter CF-VUE
Crew: Plaster and Engst

FLYING: August 31, 1970
Daily Flight Report No. 4854

1.3 hours at \$144.00 per hour \$187.20
(rate when charterer supplies fuel)

INVOICE TOTAL \$187.20

ACCOUNT	AMOUNT
138-22-3	57 60
139-22-3	57 60
109-22-3	72 00
TOTAL	187 20

- .4 hr

PAID

ADDS. + EXTENS.	CODING	O.K. TO PAY	POSTED

one per cent interest per month will be charged on all invoices not paid within 0 days of date issued.

ATLAS FUEL. 1.3

TRANS NORTH TURBO AIR LTD.



BOX 1977 PHONE 668-2177
WHITEHORSE, YUKON

TO: Γ

Atlas Explorations Ltd.
330 Marine Building
355 Burrard Street
VANCOUVER 1, B.C.

RECEIVED
OCT 8 1970

DATE September 30, 1970

INVOICE NO. 720-70

P.O. NO.

TO: Charge you with the following helicopter charters:

Bell 47G-3B-2 Helicopter CF-ETR
Crew: Vickers and Fensom

FLYING: September 19, 1970
Daily Flight Report No. 3113

2.7 hours at \$115.00 per hour
(rate when carrier supplies fuel)

PLUS: Excess cost of fuel at Granite Mountain
Charterer assessed with cost
of fuel over 60¢ per gallon

32 gallons at 52¢ per gallon

Bell 47G-3B-1 Helicopter CF-VUE
Crew: Plaster and Engst

FLYING: September 1, 2 and 4, 1970
Daily Flight Report Nos. 4855, 4857, 4859

7.2 hours at \$144.00 per hour
(rate when charterer supplies fuel)

Canadian Coachways invoice nos. 849, 1813494
to cases oil shipped to Dawson City
pick up there by contract helicopter)

L A I D

\$ 310.50
125-22-3 }
16.64
average = $\frac{1053.10}{7.2} = 146.2639$
1,036.80
16.30
\$1,380.24

ACCOUNT	AMOUNT
102-22-3	234 02
109-22-3	29 25
25-22-3	327 14
138-22-3	336 41
19-22-3	453 42
TOTAL	1380 24

One per cent interest per month will be charged on all invoices not paid within 30 days of date issued.

3.1% ATLAS FUEL

PAID

9/27/70

Fuel charged at following points:

Ross River -
 202 gallons at 49¢ per gallon
Anvil -
 104 gallons at 51¢ per gallon

\$98.98

53.04

credit 152.02
136-22-3

\$(152.02)

CREDIT INVOICE TOTAL

\$(400.72)

should be credit of 401.72

\$1.00 adjusted in dummy invoice

ACCOUNT	AMOUNT		
109-22-3	< 36 40 >		
136-22-3	< 350 02 >		
138-22-3	< 14 30 >		
TOTAL	< 400 72 >		
ADDS. + EXTENS.	CODING	O.K. TO PAY	POSTED
<i>cr</i>	<i>cr</i>	<i>cr</i>	

PAID

ATLAS PETROLEUM SERVICES
 THE BRITISH YUKON NAVIGATION CO., LTD.
 P.O. Box 1089 Whitehorse, Yukon
 510 W. Hastings St. Vancouver 2, B.C.

INVOICE

STATION: 1114172112250 DATE: 1 Oct 1970

SHIPPED TO: _____ TRUCK NO.: _____ TRIP NO.: _____

CUSTOMER'S ORDER OR REQ. NO.: 3820

ADDRESS: ATLAS EXPLORATIONS WP. NO.: _____ LOC.: _____ DELIVERED BY: _____

PRODUCTS DELIVERED	SIZE OF PACKAGE	CODE	QUANTITY	PRICE	AMOUNT
<u>AVIATION 10/1/70</u>	<u>10 DRUMS</u>		<u>450</u>	<u>519</u>	<u>247 05</u>

TAX (SPECIFY): _____ GALS. @ _____

PRODUCTS RECEIVED: _____ RECEIVED PAYMENT: _____

CASH: _____ CHEQUES: _____ DRUM CHARGES: 10615475 700 70 00

BY: [Signature] APPROVED: _____ CHECKED: _____ EXCH. TOTAL: _____

DISCOUNT: _____ TOTAL: 317.05

ACCOUNT	AMOUNT
<u>109 - 22-3</u>	<u>217 81</u>
<u>114 - 22-3</u>	<u>21 79</u>
<u>112 - 22-3</u>	<u>18 19</u>
<u>101 - 22-3</u>	<u>28 59</u>
<u>(136) - 22-3</u>	<u>11 11</u> NO DISCOUNT)
<u>(138) - 22-3</u>	<u>11 52</u>
<u>(139) - 22-3</u>	<u> </u>
TOTAL	317.05

ACCOUNT	AMOUNT	ADDS. + EXTENS.	CODING	O.K. TO PAY	POSTED
<u>141 - 22-3</u>	<u>56</u>				
<u>112 - 22-3</u>	<u>263</u>				
<u>101 - 22-3</u>	<u>485</u>				
TOTAL	317.05				

PROJECT: _____ END USE (EXPENSE CODE): 228.4 C 1.3882

ATTENTION: _____

F.O.B. _____

PREPAY AND CHARGE ON INVOICE
 ATTACH ORIGINAL BILL FOR FREIGHT CHARGES
 FREIGHT COLLECT CARRIER TO CHARGE COMPANY

RECORD OF PAYMENT

DATE	INVOICE		CHEQUE	
	AMOUNT	NO.	DATE	

ATLAS EXPLORATIONS LTD.

PURCHASING AGENT _____

ACCOUNTING _____

ROTO CLAIM WAGE SUMMARY

SCHEDULE "A"

		PROSPECTING	STAKING	LINE CUTTING	GEOLOGY	GEOPHYSICS	GEOCHEM.	CAMP SUPPORT	TOTAL
J	BRITTON		3600				5226		8826
J	BROCK					18329			18329
L	CARLICK			4000				2000	6000
P	DEAN		3098	3096		9344	6246		21784
G	GREY							4332	4332
M	KANIE		2000	8000					10000
L	JACKSON							26400	26400
B	KARVINEN				10644				10644
A	M'LOED			10000					10000
S	M'LOED			18000					18000
G	SHACMOON		2000	22000				2000	26000
T	SKONSING	6503							6503
S	SYDIE							1979	1979
R	TOWNSEND					1935	5807		7742
		6503	10678	65096	10644	29608	17279	36711	176539
NON WAGE LABOUR COSTS @ 10%		780	1283	7812	1277	3553	2073	4405	21183
TOTAL		7283	11981	72908	11921	33161	19352	41116	197722
COST SUMMARY									
STAKING			11981						11981
GEOLOGY					11921				11921
GEO PHYSICS				72908		33161			106069
GEOCHEM		7283					19352		26635
CAMP SUPPORT								41116	41116
TOTAL		7283	11981	72908	11921	33161	19352	41116	197722

TINTINA

		H	T	T	H	T	T	T	T	T	T	H	T
	18-003	102	109	114	124	132	136	138	139	141	142	143	101
INVOICE													
6-15	92:20	—	76:40	1:30	6:10	8:00							
7-29	104:15	92:25		5:55	3:35	2:20							
H. 269	2:45					2:45							
H. 242	3:55				3:55								
H. 1053-1060	36:55	36:55											
H. 1048	49:30	25:15	14:35		9:40								
9-6	59:15	15:45	43:30										
9-14	7:55	3:10		44:1									
9-16	356:50	173:30	134:45	12:10	23:20	13:05							
	356.8	173.5	134.7	12.2	23.3	13.1							
A. 638-70	10.6		6.1				1.3	2.2	10				
596-70	15.1		6.8		7.0			1.3					
607-70	1.3		.5					.4	.4				
537-70	17.0						17.0						
753-70	20.6				17.4							3.2	
719-70	39.9	1.5	8.6	3.5	12.6		2.3	1.8	3.8	.4	1.9		3.5
720-70	7.2	1.6	.2					2.3	3.1				
	468.5	176.6	156.9	15.7	60.3	13.1	20.6	8.0	8.3	.4	1.9	3.2	3.5
accumul.	468.5	176.6	156.9	15.7	60.3	13.1	20.6	8.0	8.3	.4	1.9	3.2	3.5
H.E.S.S.	240.1												
TINTINA	228.4												
21.7772	5228.71	3845.85			131317							6969	
H.E.S.S. TO DATE change	4838.34		3323.72	33258	27751	436.38	169.47	175.82	8.47	4025			7414
H.E.S.S. changed to DATE	6065.60	2949.50	2289.90	20740	396.10	22270							
	4001.45	89635	103382	12518	91707	5481	436.38	169.47	175.82	8.47	4025	6969	7414