

GEOLOGIC, GEOPHYSICAL, GEOCHEMICAL  
INVESTIGATION OF THE GRAN GROUP  
TINTINA PROJECT

Anvil District  
Yukon Territory

Longitude: 133°48'W.  
Latitude : 62°27'N

N.T.S. - 105-K-5

Field work done during the  
period August 1-September 15, 1970



This report has been examined by the Geological Evaluation Unit and is recommended to the Commissioner to be considered as representation work in the amount of

\$ 6275.75

*J.B. Craig*  
Resident Geologist or  
Resident Mining Engineer

Considered as representation work under Section 53 (4) Yukon Quartz Mining Act.

*[Signature]*  
Commissioner of Yukon Territory

By: WAYNE J. ROBERTS

DYNASTY EXPLORATIONS LIMITED

February, 1971

I hereby certify that the within instrument is a true and correct copy of the instrument of which it purports to be a copy, and which was registered in the Office of the Mining Recorder at Whitehorse, Y.T.

this ..... day of .....  
19..... under number .....  
Dated at Whitehorse, Y.T., this .....  
day of ..... 19.....

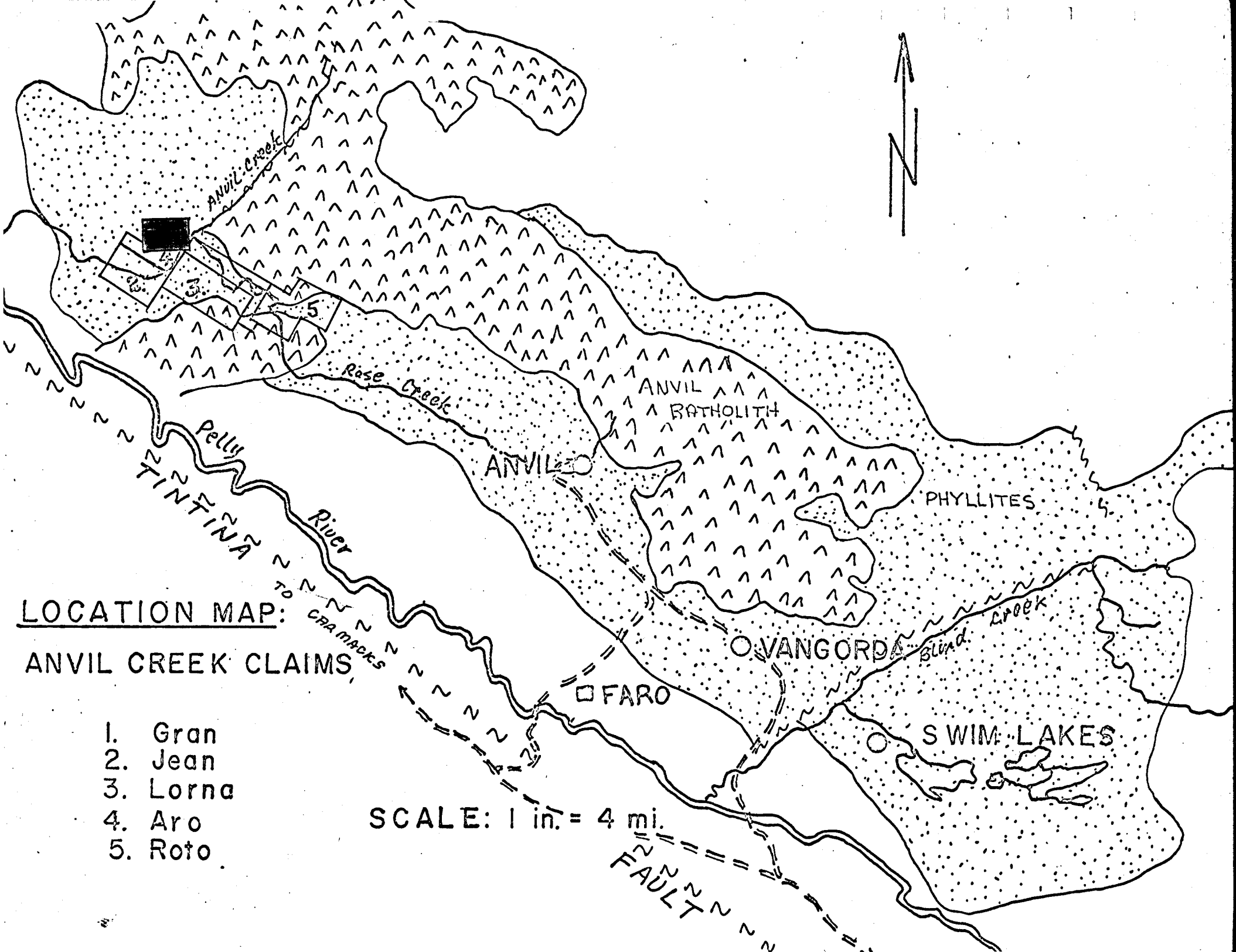
Mining Recorder,  
Whitehorse Mining District

TABLE OF CONTENTS

	<u>Page</u>
LIST OF CLAIMS	
KEY MAP	
INTRODUCTION .....	1
LOCATION AND ACCESS .....	1
REGIONAL GEOLOGY .....	2
GEOPHYSICAL SURVEYS .....	2
Airborne Mag. Map	
Airborne E.M. Map	
(a) Ground Magnetometer Survey .....	2
(b) Gravity Survey .....	3
GEOCHEMICAL SURVEYS .....	4
(a) Survey Techniques .....	4
(b) Analytical Methods .....	4
(c) Presentation of Data.....	5
(d) Interpretation of Results .....	5
TABLE OF GEOLOGIC FORMATIONS .....	6
GEOLOGY .....	7
CONCLUSIONS AND RECOMMENDATIONS .....	8
Appendix I	Gran Group Claim Map
Appendix II	Geology Map
Appendix III	Geochemical Values Map
Appendix IV	Magnetometer Values Map
Appendix V	Magnetometer Contour Map
Appendix VI	Residual Gravity Map
Appendix VII	List of Personnel
Appendix VIII	Summary of Costs
Appendix IX	Affidavit Supporting Summary of Costs
Appendix X	Vouchers Supporting Costs

LIST OF CLAIMS

<u>Claim</u>	<u>Grant No.</u>	<u>Recording Date</u>
GRAN 1-8	Y58253-Y58260	Sept. 2, 1970
9-16	Y58261-Y58268	Sept. 3, 1970
17-24	Y58135-Y58142	Aug. 31, 1970



LOCATION MAP:

ANVIL CREEK CLAIMS

- 1. Gran
- 2. Jean
- 3. Lorna
- 4. Aro
- 5. Roto

SCALE: 1 in. = 4 mi.

FAULT

GEOLOGIC, GEOPHYSICAL, GEOCHEMICAL  
INVESTIGATION OF THE GRAN GROUP  
TINTINA PROJECT

INTRODUCTION

Dynasty Explorations Limited undertook a program of outlining and delineating airborne magnetic and electromagnetic anomalies in the northwestern portion of the Anvil phyllite belt which contains three known replacement lead-zinc deposits. Several anomalies similar to ones caused by known deposits occur in an area of favourable stratigraphy and nearby granitic intrusives and were thought to warrant further investigation. A total of 208 claims were staked in five groups covering prominent anomalies.

The Gran Group of 24 claims covers a moderate aeromagnetic anomaly approximately one and one-half miles long by one-quarter mile wide near the granitic contact just west of the junction of Anvil and Rose Creeks. A small aero-electromagnetic response occurs to the east of the magnetic anomaly. Ground follow-up consisted of establishment of a grid accompanied by geochemical soil sampling, magnetometer, gravity and geologic surveys.

LOCATION AND ACCESS

The Gran Group of claims is located west of the junction of Rose and Anvil Creek, approximately 22 miles northwest of Faro and 10 miles northwest of Rose Mountain. Access is by road to the Anvil mine, then by a 15 mile helicopter trip down Rose Creek.

## REGIONAL GEOLOGY

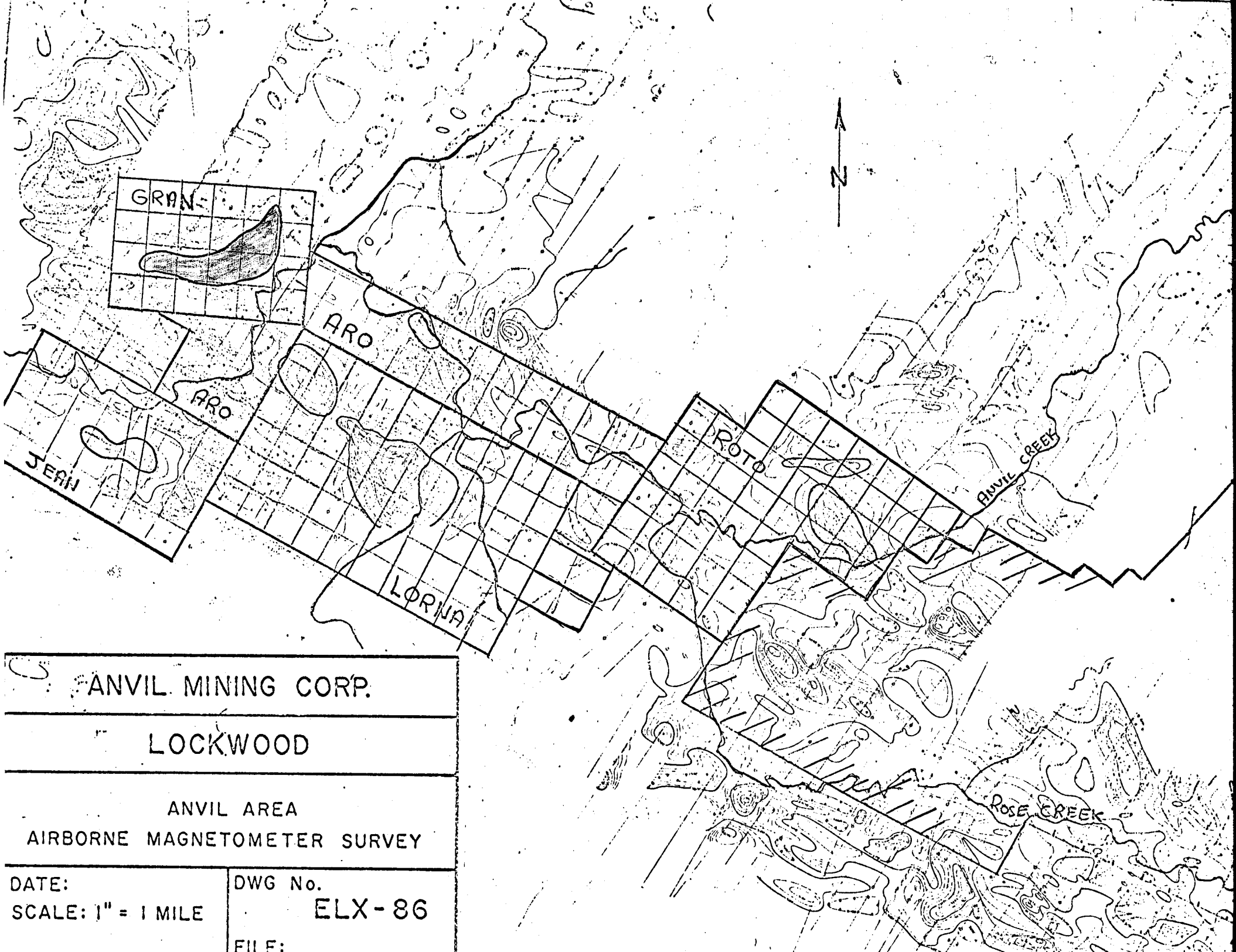
The Anvil District lies along the northeast side of the Tintina Trench, a zone of major northwest transcurrent faultings, and occurs as a belt of metasediments of probable early Paleozoic age arched over a central core of Cretaceous granodiorite, the Anvil batholith. The structure being a double plunging anticline with a northwest trending fold axis slightly arched plunging both to the northwest and southeast. The phyllite belt, noted on the accompanying Location Map, consisting of quartz-mica schists, sericite schists, sericitic to graphitic phyllites, and greenstone lenses is the host for the massive stratiform replacement sulphide deposits in the area. The degree of metamorphism, tends to increase from the Swim Lakes area northwest to Anvil which may be noted both in the change in metamorphic facies and variability of sulphide grain size within the deposits.

## GEOPHYSICAL SURVEYS

### (a) Ground Magnetometer Survey

The magnetic survey was conducted over the grid area to outline the large low intensity aeromagnetic anomaly (obtained from a previous airborne survey conducted by Anvil Mining Corporation). The magnetic survey was carried out over 800 ft. spaced cut lines, readings were taken every 100 ft. All lines were established by compass and chain methods and were cut approximately 2 to 3 ft. wide. Grid control was checked by survey of base and tie lines during the gravity survey.

The Sharpe MF-1 magnetometer was used, the instrument is hand held and measures the vertical magnetic component by use of an oil-dampered fluxgate which automatically levels itself in the vertical direction. Gamma values can be directly read from the instrument. Prior to



GRAN

ARO

ARO

JEAN

LORNA

ROTO

ANVIL CREEK

ROSE CREEK

ANVIL MINING CORP.

LOCKWOOD

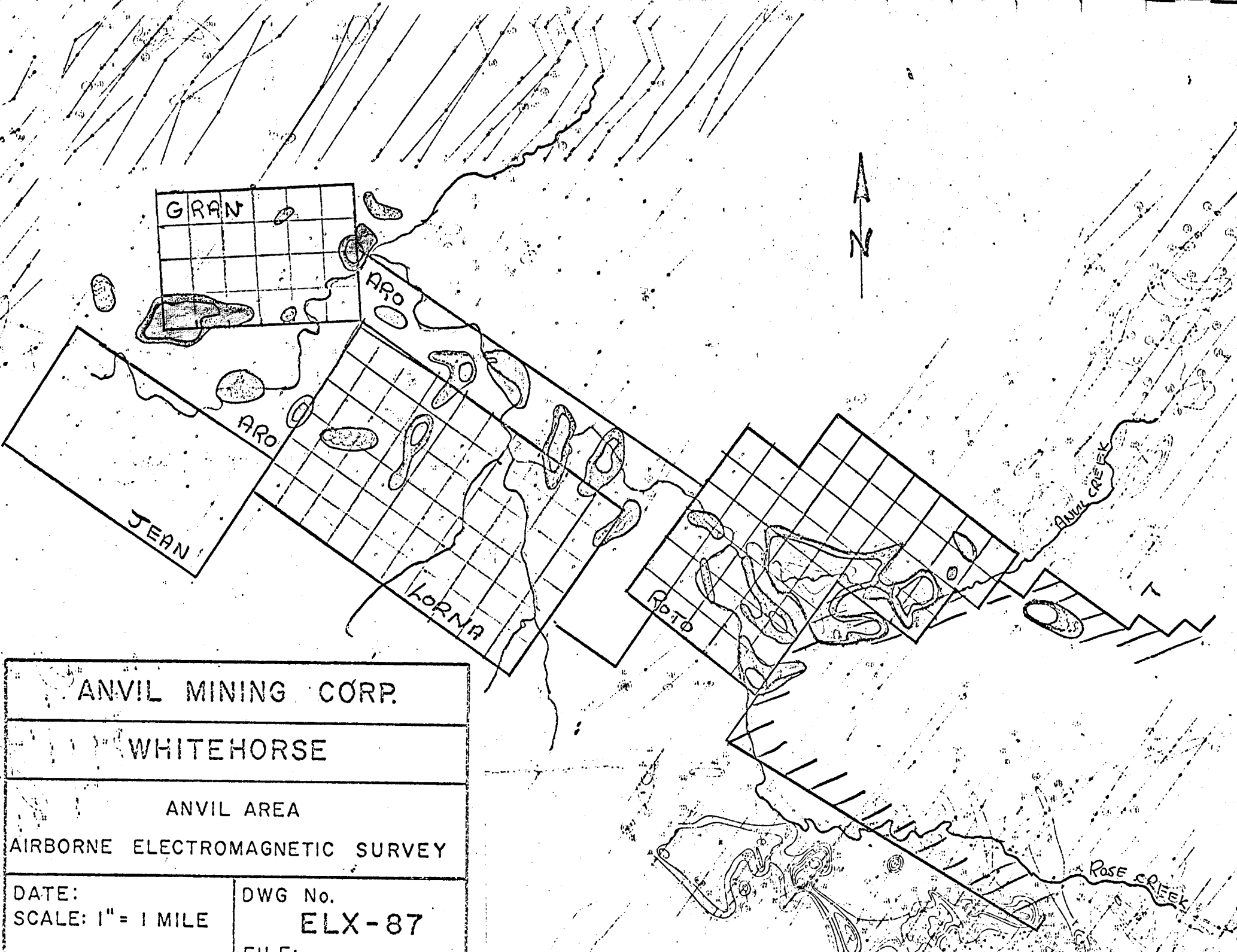
ANVIL AREA

AIRBORNE MAGNETOMETER SURVEY

DATE:  
SCALE: 1" = 1 MILE

DWG No.  
ELX-86

FILE:



ANVIL MINING CORP.

WHITEHORSE

ANVIL AREA

AIRBORNE ELECTROMAGNETIC SURVEY

DATE:  
SCALE: 1" = 1 MILE

DWG No.  
ELX-87

FILE:

the actual magnetometer survey, readings were taken along the base lines at cross line intersection points. These stations were looped and re-read every hour as a means of controlling drift and diurnal variations. With established base stations, a rapid and precise check was kept on a relative basis during day to day operation. All cross lines were read and re-checked at base stations within every hour as a means of checking magnetic variations.

Magnetic results were corrected for both diurnal changes and drift then plotted on a grid plan with a scale of 400 ft. to 1 inch. The data was then contoured with the resulting maps included in this report.

There appears to be little magnetic relief throughout the grid area with a maximum difference of 300 gammas. A northeast trending elongate moderate to weak anomaly, shown on the accompanying "Magnetometer Contour Map, outlines the previous aeromagnetic anomaly but due to great thicknesses of overburden, little geologic interpretation can be made.

(b) Gravity Survey

The gravity survey contracted by Overland Exploration Services, was conducted over the magnetic anomaly using the previously established grid. The horizontal and vertical survey was conducted with a T-1A Theodolite to establish elevations and grid closure. The gravity readings were taken with a Worden Master meter at every 100 ft. station along the individual lines with two and a half hour loop closures from base stations for controlling diurnal drift. Each loop had several repeat stations from preceding loops to ensure accuracy of the gravity meter.

All field results were sent to the Calgary head office for corrections and initial interpretation. All readings were corrected for diurnal tidal drift, Bouguer Free-Air-Correction, latitude correction and terrain correction. All resulting maps were then sent back to the field for further interpretation.

The Bouguer map shows a high area elongate in a northeast-southwest direction coincident with the weak magnetic anomaly. The Residual Gravity Map indicates an isolated gravith "high" with a magnitude of 0.70 milligals between line 0 and line 8 east. The small subrounded feature occurs at the northeastern end of both the Bouguer and magnetic anomalies and is thought to represent a shallower portion of a denser mass trending northeast-southwest. The density contrast does not appear great enough to have been caused by massive sulphides.

#### GEOCHEMICAL SURVEYS

##### (a) Survey Techniques

The entire grid area was soil sampled at 200 ft. stations on 800 ft. spaced picket lines. All samples were taken from the B-horizon which generally consisted of a rusty to grey clay textured soil. All samples were placed in kraft paper bags and subsequently sent to the Atlas Explorations laboratory in Whitehorse for analysis.

##### (b) Analytical Methods

All soil samples were dried and sieved to -80 mesh and the fines were retained for analysis. 0.5 grams of each sample was digested in aqua regia, diluted, and allowed to settle. Concentrations of copper, lead and zinc in solution were determined with a Perkin-Elmer 303AA

spectrophotometer. The analytical technique was controlled by selected standardized samples.

(c) Presentation of Data

All analytical results were plotted on a grid plan to a scale of 1 inch equals 400 ft., which may be found in the accompanying Appendix.

(d) Interpretation of Results

Copper values range between 10 and 80 parts per million with the majority below the threshold of 40 ppm. Anomalous copper values occur scattered throughout the grid with no major zones present. Values obtained for lead content generally range between 2 and 20 ppm, with a maximum value of 31 ppm. Concentrations of lead in the grid area were not considered as anomalous. Zinc values generally range between 30 and 180 ppm, with a threshold of 100 ppm. Slightly anomalous values in zinc occur in the thick overburden region of Anvil Creek. A high variability exists between the three metals in individual samples.

TABLE OF GEOLOGIC FORMATIONS

CRETACEOUS	(	10	Medium grained biotite granite to biotite hornblende quartz Monzonite (locally) porphyritic.
	(		
CAMBRIAN OR EARLIER	(	8	"Greenstone" includes schistose meta-basalt, chlorite-talc-amphibole schist, amphibolite, meta-ultramafic units, and Gabbro
	(		
	(	3	Mica-quartz phyllite, dark grey to black graphitic phyllite, black slate, phyllitic quartzite and chlorite phyllite.
	(		
	(	1	Mica-quartz schist, biotite-garnet schist and sericite schist.
	(		

## GEOLOGY

The Gran Group is totally covered by overburden with outcrop to the north which may be noted on the accompanying "Geology Map of the Anvil Creek Area" by W. Karvinen. Although no surface evidence exists, it is thought that the quartz-mica schist unit, the favourable host to massive lead-zinc deposits in the area, continues westward from the Anvil Creek fault underlying the Gran claims. It is also suggested that the contact between the quartz-mica schist unit and the biotite quartz monzonite may be represented by the magnetic anomaly present due to pyrrhotite impregnation at the contact. No mineralization or alteration was noted within the Gran claims.

The oldest rock unit in the area appears to be the quartz-mica schist in which sericite schist predominates. The schist is very thinly foliated, soft, fissile and quartz content generally exceeds 40 percent. Greenish tints appear to depend on chlorite content. Graphitic and carbonate percentages are generally low. Degree of metamorphism may be noted by different facies including minerals such as garnet, staurolite and biotite.

Unit Number 3 consists of phyllites with a grey to black sericitic-quartz phyllite predominating. The graphite content varies with a distinct stratigraphic black graphitic horizon occurring within the unit. The phyllites are very fissile, often show bedding, contain good boudinage structures, and include numerous quartz lenses, pods, and stringers which often are rusty and contain pyrite.

Unit Number 8, "Greenstone" includes schistose meta-basalt amphibolite, chlorite-talc-amphibolite schist, chlorite schist and other basic intrusives and extrusives. Foliation is present in the schistose members while intrusive members are generally massive and blocky.

The Anvil batholith is composed of a medium grained hypid-  
iomorphic quartz monzonite in this area. It is locally  
porphyritic. Designation of rock units is similar to the  
G.S.C. map "Tay River Geology Map" by Roddick and Green.

CONCLUSIONS AND RECOMMENDATIONS

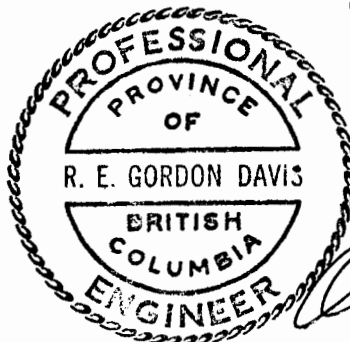
Results from geologic, geochemical and geophysical surveys  
so far have not outlined a possible drilling target. Weak  
magnetic and gravity anomalies indicate a northeast-southwest  
trending mass slightly more dense and magnetic than the  
surrounding rock. The magnitude of the density contrast  
appears to be lower than necessary to be equivalent to  
massive sulphides. Little geochemical response was due to  
the thickness of overburden in the Anvil Creek valley.  
Since the Gran claims appear to cover the geologically  
favourable quartz-sericite schists, it is thought that they  
should be kept in good standing for the 1971 field season  
to enable further geologic interpretation of the Anvil Creek  
area.

Respectfully submitted,



W. J. Roberts,  
Geologist

February, 1971





ATLAS EXPLORATIONS LIMITED

GEOLOGY MAP OF THE ANVIL CREEK AREA

N. T. S.: 105 K 5



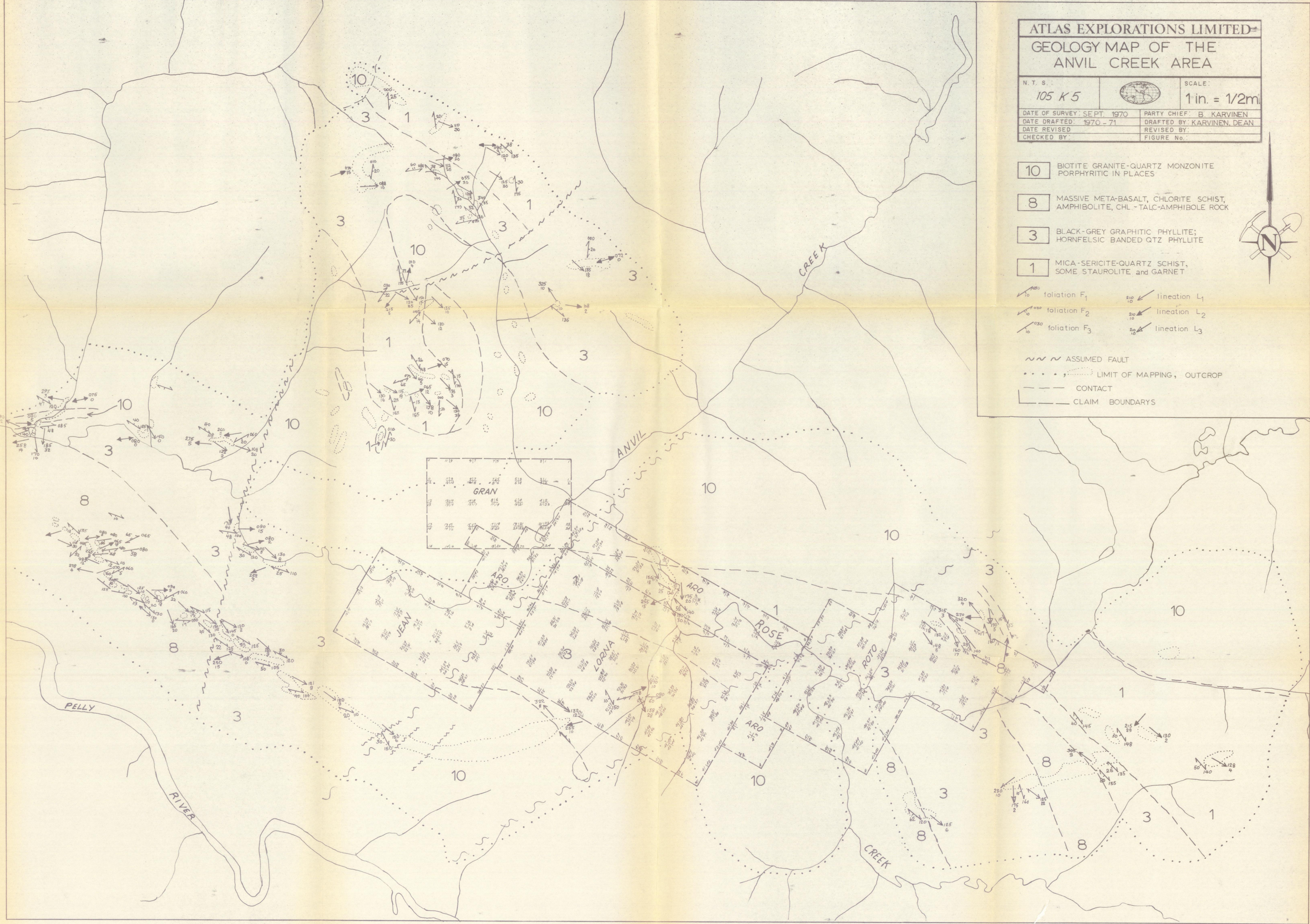
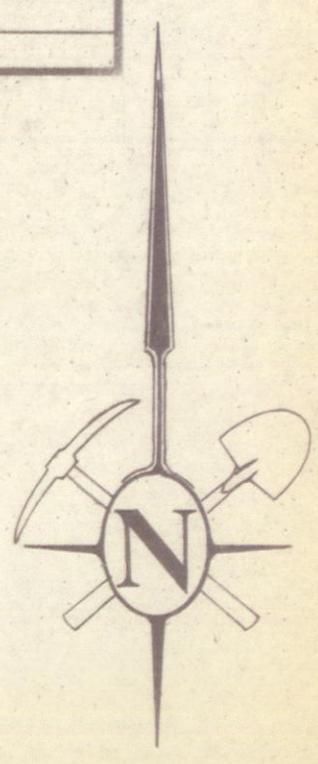
SCALE: 1 in. = 1/2 mi

DATE OF SURVEY: SEPT. 1970	PARTY CHIEF: B. KARVINEN
DATE DRAFTED: 1970-71	DRAFTED BY: KARVINEN, DEAN
DATE REVISED:	REVISED BY:
CHECKED BY:	FIGURE No.:

- 10 BIOTITE GRANITE-QUARTZ MONZONITE PORPHYRITIC IN PLACES
- 8 MASSIVE META-BASALT, CHLORITE SCHIST, AMPHIBOLITE, CHL - TALC-AMPHIBOLE ROCK
- 3 BLACK-GREY GRAPHITIC PHYLLITE; HORNFELSIC BANDED QTZ PHYLLITE
- 1 MICA-SERICITE-QUARTZ SCHIST, SOME STAUROLITE, and GARNET

- foliation F<sub>1</sub>
- foliation F<sub>2</sub>
- foliation F<sub>3</sub>
- lineation L<sub>1</sub>
- lineation L<sub>2</sub>
- lineation L<sub>3</sub>

- ASSUMED FAULT
- LIMIT OF MAPPING, OUTCROP
- CONTACT
- CLAIM BOUNDARYS



# ATLAS EXPLORATIONS LIMITED

## GRAN CLAIMS GEOCHEMICAL VALUES

N. T. S. :

105K5



SCALE :

1" : 400'

DATE OF SURVEY: SEPT 170

PARTY CHIEF: DEAN

DATE DRAFTED:

DRAFTED BY:

DATE REVISED:

REVISED BY:

CHECKED BY:

FIGURE No.:



• Cu, Pb, Zn

11 9  
12 10

9 7  
10 8

7 5  
8 6

5 3  
6 4

3 1  
4 2

1 2

L 40w

L 32w

L 24w

L 16w

L 8w

L 0

L 8E

L 16E

L 24E

L 32E

- 18, 6, 59
- 13, 7, 40
- 26, 12, 50
- 35, 6, 46
- 18, 8, 49
- 14, 8, 44
- 36, 12, 86
- 80, 16, 69
- 54, 8, 62

- 19, 6, 59
- 13, 7, 40
- 23, 4, 35
- 14, 8, 37
- 10, 6, 41
- 12, 9, 41
- 42, 10, 92
- 13, 8, 40
- 25, 6, 62

- 30, 12, 58
- 13, 11, 40
- 21, 6, 59
- 26, 14, 70
- 15, 8, 68
- 12, 10, 40
- 45, 9, 116
- 20, 10, 77
- 36, 7, 95
- 24, 11, 69
- 36, 13, 77
- 24, 2, 58
- 15, 7, 42

- 45, 11, 58
- 70, 15, 69
- 9, 10, 53
- 20, 14, 62
- 13, 8, 52
- 23, 4, 34
- 11, 10, 62
- 36, 16, 96
- 29, 12, 77
- 18, 7, 62
- 24, 11, 68
- 21, 11, 59
- 23, 9, 75

- 42, 20, 142
- 62, 20, 171
- 48, 9, 150
- 10, 8, 44
- 13, 7, 54
- 29, 19, 106
- 60, 19, 162
- 15, 6, 52
- 28, 10, 58
- 18, 11, 970
- 50, 21, 116
- 48, 19, 106
- 38, 10, 112
- 38, 10, 78

- 13, 12, 49
- 23, 21, 108
- 24, 16, 75
- 18, 15, 68
- 20, 11, 72
- 15, 8, 64
- 10, 16, 49
- 52, 12, 156
- 23, 19, 106
- 14, 8, 74
- 26, 14, 100
- 38, 15, 77
- 33, 20, 129
- 57, 19, 124
- 57, 14, 180
- 48, 19, 106
- 38, 15, 77
- 38, 10, 112
- 38, 10, 78

- 30, 15, 95
- 35, 11, 89
- 23, 17, 78
- 13, 15, 50
- 10, 8, 37
- 39, 10, 100
- 26, 12, 78
- 14, 11, 38
- 14, 9, 47
- 26, 11, 60
- 29, 7, 80
- 29, 12, 84
- 33, 17, 147
- 33, 16, 106
- 35, 16, 104
- 21, 16, 75
- 20, 8, 53
- 15, 4, 42
- 52, 17, 120
- 36, 11, 78
- 29, 10, 74
- 39, 12, 92

- 45, 12, 96
- 38, 12, 145
- 23, 17, 91
- 41, 15, 100
- 26, 9, 78
- 24, 15, 89
- 39, 17, 84
- 44, 20, 118
- 44, 17, 147
- 39, 17, 96
- 20, 10, 62
- 23, 11, 70
- 26, 15, 91
- 23, 10, 72
- 23, 15, 59
- 20, 11, 70
- 59, 20, 124
- 45, 13, 114
- 49, 11, 108
- 45, 13, 91
- 42, 14, 98

- 13, 15, 50
- 10, 8, 37
- 21, 11, 69
- 21, 11, 78
- 29, 12, 104
- 24, 7, 72
- 20, 10, 62
- 23, 11, 70
- 26, 15, 91
- 23, 10, 72
- 23, 15, 59
- 20, 11, 70
- 59, 20, 124
- 45, 13, 114
- 49, 11, 108
- 45, 13, 91
- 42, 14, 98

- 52, 17, 100

BL 0 3 15  
14 16

- 18, 5, 46

- 24, 14, 84

15 17  
16 18

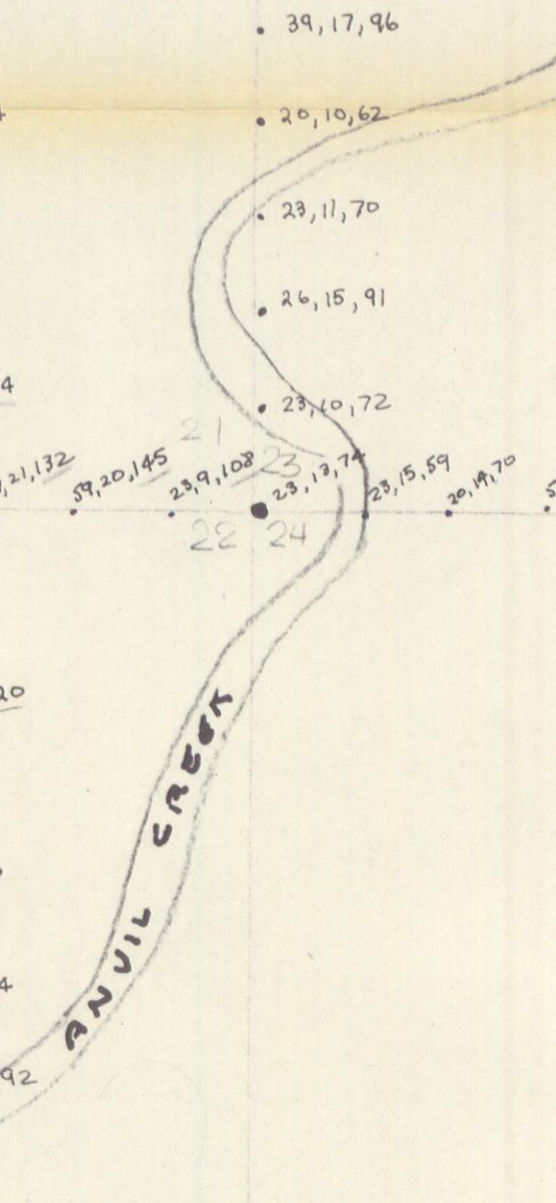
- 20, 10, 77

- 36, 16, 96

- 28, 10, 58
- 18, 11, 970
- 50, 21, 116

- 52, 22, 137

- 59, 22, 150
- 32, 9, 106
- 57, 21, 132
- 59, 20, 145
- 23, 9, 108
- 23, 12, 74
- 23, 15, 59
- 20, 11, 70
- 59, 20, 124
- 45, 13, 114
- 49, 11, 108
- 45, 13, 91
- 42, 14, 98





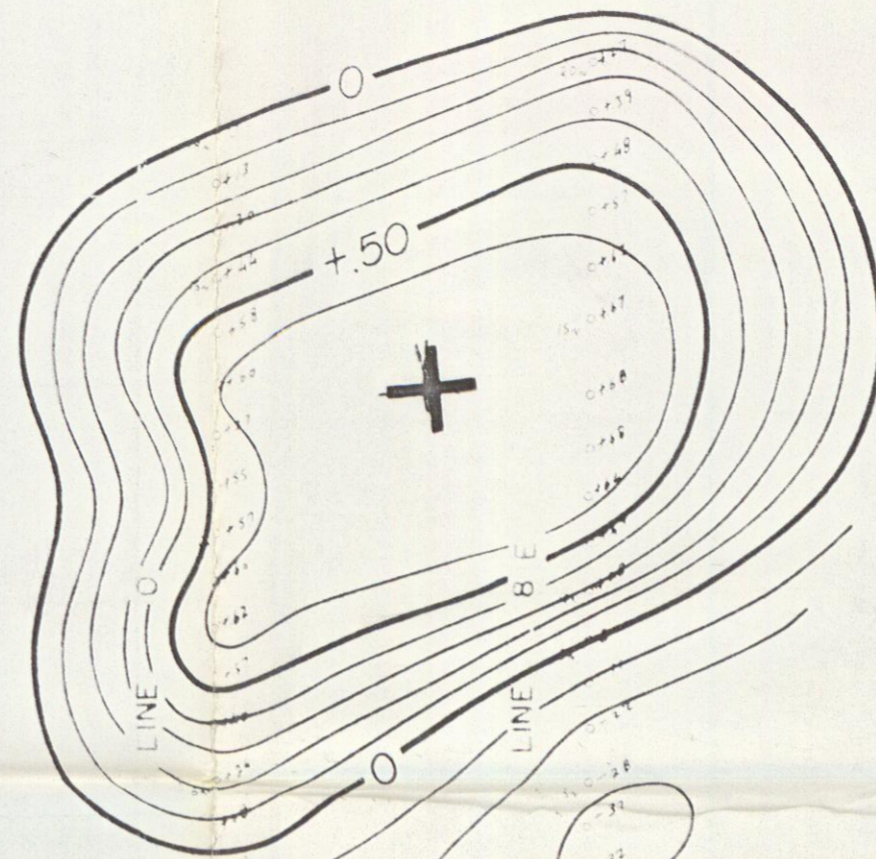


<b>ATLAS EXPLORATIONS LIMITED</b>	
GRAN CLAIMS MAGNETOMETER SURVEY CONTOUR MAP	
N. T. S.:	SCALE:
105 K 5	1" TO 400'
DATE OF SURVEY: Aug / 70	PARTY CHIEF: DEAN
DATE DRAFTED:	DRAFTED BY:
DATE REVISED:	REVISED BY:
CHECKED BY:	FIGURE No.:

LINE 24 W

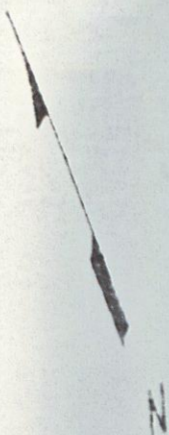
LINE 16 W

BASE LINE



LINE 24 E

LINE 16 E



OVERLAND  
EXPLORATION SERVICES LTD.

FOR  
ATLAS EXPLORATIONS LIMITED  
GRAN CLAIM BLOCK

RESIDUAL GRAVITY MAP

Scale 1" = 400'

0.10 MGALS

LIST OF PERSONNEL

<u>Name</u>	<u>Position</u>	<u>Residence</u>
John S. Brock	Vice-President Expl. Geophysicist	Vancouver, B.C.
W. J. Roberts	Geologist	Vancouver, B.C.
W. O. Karvinen	Geologist	Vancouver, B.C.
P. Dean	Party Chief	Vancouver, B.C.
J. Britton	Mag. operator	Vancouver, B.C.
L. Carlick	Linecutter	Whitehorse, Y.T.
S. McLeod	Linecutter	Ross River, Y.T.
A. McLeod	Soil Sampler	Ross River, Y.T.
J. Etzel	Soil Sampler	Ross River, Y.T.
G. Gray	Cook	Ross River, Y.T.

Contractors

Overland Exploration Services  
Trans North Turbo Air

Calgary, Alberta  
Whitehorse, Y.T.

SUMMARY OF COSTS  
GRAN CLAIM GROUP

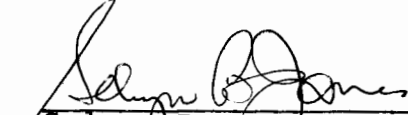
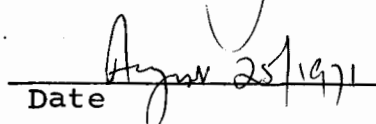
	<u>Schedule</u>	<u>Geology</u>	<u>Geochem</u>	<u>Geophysics</u>	<u>Total</u>
Wages-					
General	"A"	\$278.06	\$ 353.49	\$ 584.79	\$1,216.34
Report Writing	"B"	50.00	50.00	50.00	150.00
Assays	"C"		418.20		418.20
Rotary Wing	"D"	165.76	544.41	615.80	1,325.97
Contract Charges	"D"			1,430.00	1,430.00
Camp Support	"D"	90.51	297.39	336.15	724.05
Expediting (31.7% of general wages)		<u>88.14</u>	<u>112.06</u>	<u>185.38</u>	<u>385.58</u>
		\$672.47	\$1,775.55	\$3,202.12	\$5,650.14
Administration Charge 10%		<u>67.25</u>	<u>177.55</u>	<u>320.21</u>	<u>565.01</u>
<b>TOTAL</b>		<u>\$739.72</u>	<u>\$1,953.10</u>	<u>\$3,522.33</u>	<u>\$6,215.15</u>

# DYNASTY EXPLORATIONS LIMITED

330 MARINE BUILDING  
355 BURRARD STREET  
VANCOUVER 1, B.C.

## AFFIDAVIT SUPPORTING SUMMARY OF COSTS

I, SELWYN B. JONES, Vice-President Corporate, Dynasty Explorations Limited, of Vancouver, British Columbia, do hereby state that, to the best of my knowledge and belief, the statement of cost presented in this report (Geologic, Geophysical, Geochemical Investigation of the Gran Group) is both correct and true.

  
\_\_\_\_\_  
Selwyn B. Jones  
  
  
\_\_\_\_\_  
Date

  
\_\_\_\_\_  
Notary Public in and for  
Yukon Territory

# GRAN WAGE SUMMARY

SCHEDULE "A"

NAME	STAKING	LINE CUTTING	GEOLOGY	GEOCHEM	GEOPHYSICS	CAMP	TOTAL
J. BRITTON					(4)	7200	
J. S. BROCK					(2)	18329	
L. CARLICK		(7)	14000		(2)	4000	
P. DEAN	(1)	3096 (1)	3123		(1)	3123	
S. ETZEL		(6)	12000				
G. GRAY						(3)	6498
B. KARVINEN	(1)	2000	(7)	24827			
S. MACLOED		(1)	10000		(2)	4000	
G. SHACKON	(1)	2000 (4)	8000				
J. SYDIE					(1)	1979	
<hr/>							
	(3)	7096 (36)	47123 (1)	24827 (4)	8000 (2)	28652 (4)	8477
ADD. NON WAGE LABOR COSTS OF 12 1/2%		852	5655	2979	960	3438	1017
<hr/>							
TOTAL		7948	52778	27806	8960	32090	9494 139076
<hr/>							
COST TYPE SUMMARY							
STAKING	(3)	7948					(3) 7948
GEOLOGY			(1)	27806			(2) 27806
GEOCHEM		(14)	26389		(4)	8960	(23) 35349
GEOPHYSICS		(15)	26389		(7)	32090	(24) 58479
CAMP						(4)	(4) 9494
<hr/>							
		7948	52798	27806	8960	32090	9494 (23) 139076



NAME JOHN J. ROCK  
 TITLE OF WORK EXPL. MANAGER  
 TITLE OF PAY \_\_\_\_\_

DATE	WORK	OFF	FLD. BNS.	CODING	EXPLANATIONS	
1	✓			07	YUKON OEX - BOSWELL	✓
2	✓			07	YUKON OEX -	✓
3	✓			ADMIN	WHSE	✓
4	✓			07	OWL	✓
5	✓			08	VICTOR OEX	✓
6	✓			09	KLAZAN	✓
7	✓				WHSE - V.C.R.	✓
8		✓				
9		✓				
10	✓			ADMIN	VANCOUVER OFFICE	✓
11	✓			✓	✓	✓
12	✓			✓	✓	✓
13		✓				
14		✓				
15		✓				
16		✓				
17	✓			ADMIN	VANCOUVER OFFICE	✓
18	✓			✓	VANCOUVER WHSE	✓
19	✓			✓	WHSE	✓
20	✓			07	LORNA	✓
21	✓			07	ROTO	✓
22	✓			07	GRAN	✓
23	✓				<del>HEATHEN</del> 93-01	✓
24	✓			07	VICTOR VAN	✓
25	✓			09	WHSE KLAZAN	✓
26	✓			ADMIN	WHSE	✓
27	✓			✓	WHSE	✓
28	✓			06	YUKON OEX	✓
29	✓			07	LORNA	✓
30	✓			08	TINTINA OEX	✓
31	✓			02	TINTINA OEX	✓

PAYROLL DEPT. USE ONLY	
_____	@ _____
_____	@ _____
_____	@ _____
GROSS BEFORE BOARD	_____
BOARD	_____
GROSS EARNINGS	_____
DEDUCTIONS	
1) CANADA PENSION	_____
2)	_____
3) INCOME TAX	_____
4) GROUP	_____
5) M.S.A.	_____
6) ACCTS. REC.	_____
7)	_____
8) BOARD	_____
9)	_____
10)	_____
11) MID MONTH ADVANCE	_____
NET PAY	_____

PROJECT	DAYS	GROSS BEFORE BOARD	FIELD BONUS
101-06-1	1	36.00 ✓	-8.00 ✓
115-07-1	1	36.00 ✓	-8.00 ✓
101-07-1	2	72.00 ✓	-16.00 ✓
93-01	7	252.00 ✓	-56.00 ✓
124-07-1	1	36.00 ✓	-8.00 ✓
115-08-1	1	36.00 ✓	-8.00 ✓
138-07-1	1	36.00 ✓	-8.00 ✓
125-09-1	2	72.00 ✓	-16.00 ✓
92-01	4	144.00 ✓	-32.00 ✓
136-07-1	2	72.00 ✓	-16.00 ✓
139-07-1	1	36.00 ✓	-8.00 ✓
109-08-1	1	36.00 ✓	-8.00 ✓
109-02-1	1	36.00 ✓	-8.00 ✓

- LABOUR CODING**
- 01 PROPERTY EXAMINATION
  - 02 PROSPECTING
  - 03 STAKING
  - 04 AIRBORN SURVEYS
  - 05 LINE CUTTING
  - 06 GEOLOGY
  - 07 GEOPHYSICS
  - 08 GEOCHEMISTRY
  - 09 DIAMOND DRILLING
  - 10 PHYSICAL WORK
  - 11 ACCESS ROADS
  - 21 CAMP OPERATIONS
  - 91-01 VANC. OFFICE - ADMIN.
  - 92-01 VANC. EXPLORATION OFFICE
  - 93-01 WHITE HORSE BASE
  - 94-01 ROSS RIVER BASE
  - 95-01 GEOCHEM. LAB.
  - 96-01 BULLDOZER

EMPLOYEE John J. Rock 25 APPROVED 900.00 91-01 200.00

ATLAS EXPLORATIONS LIMITED

TIME SHEET

NAME JOHN BROCK  
 TYPE OF WORK EXPL. MANAGER  
 RATE OF PAY \_\_\_\_\_

FOR THE MONTH OF SEPT. 19 70

DATE	WORK	OFF	FLD. BNS.	CODING	EXPLANATIONS
	✓			94-01	ROSS RIVER ✓
	✓			01	GRAN ✓
3	✓			07	LORNA ✓
	✓			93-01	WHSE ✓
	✓			93-01	WHSE ✓
6	✓			93-01	WHSE ✓
	✓			07	ROTO ✓
	✓			08	TINT OEX ✓
9	✓			07	JEAN ✓
10	✓			07	ANVIL ✓
11	✓			08	ANVIL ✓
12	✓			93-01	WHSE ✓
13	✓			93-01	WHSE ✓
14	✓			09	OWL ✓
15	✓			93-01	WHSE ✓
16	✓			07	ANVIL ✓
17	✓			07	ANVIL ✓
18	✓			93-01	WHSE ✓
19	✓			93-01	WHSE ✓
20	✓			09	CUB ✓
21	✓			93-01	WHSE ✓
22	✓			93-01	WHSE ✓
23	✓			92-01	WHSE - VCR. ✓
24	✓			92-01	VANCOUVER ✓
25	✓				✓ ✓
26	✓				WEEKEND ✓
27	✓				WEEKEND ✓
28	✓			92-01	VANCOUVER ✓
29	✓				✓ ✓
30	✓				✓ ✓
31					

PAYROLL DEPT. USE ONLY	
@	_____
@	_____
@	_____
GROSS BEFORE BOARD	_____
BOARD	_____
GROSS EARNINGS	_____
DEDUCTIONS	
1) CANADA PENSION	_____
2)	_____
3) INCOME TAX	_____
4) GROUP	_____
5) M.S.A.	_____
6) ACCTS. REC.	_____
7)	_____
8) BOARD	_____
9)	_____
10) UIC	_____
11) MID MONTH ADVANCE	_____
NET PAY	=====

TOT

PAYROLL DEPT. USE ONLY

PROJECT	DAYS	GROSS BEFORE BOARD	FIELD BONUS
94-01 ①	39.29	142-07-1 ③	117.83
139-07-10	39.29	124-09-1 ①	39.29
136-07-10	39.29	131-09-1 ①	39.29
93-01 ⑩	392.82	92-01 ②	235.74
138-07-10	39.29		
109-08-10	39.29		
141-07-10	39.29		
142-08-10	39.29		
			1100.00

LABOUR CODING	
-01	PROPERTY EXAMINATION
-02	PROSPECTING
-03	STAKING
-04	AIRBORN SURVEYS
-05	LINE CUTTING
-06	GEOLOGY
-07	GEOPHYSICS
-08	GEOCHEMISTRY
-09	DIAMOND DRILLING
-10	PHYSICAL WORK
-11	ACCESS ROADS
-21	CAMP OPERATIONS
-01	VANC. OFFICE - ADMIN.
-01	VANC. EXPLORATION OFFICE
93-01	WHITE HORSE BASE
94-01	ROSS RIVER BASE
-01	GEOCHEM. LAB.
-01	BULLDOZER

EMPLOYEE John Brock

APPROVED \_\_\_\_\_

# JOHN S. BROCK LIMITED

Mining Exploration Services

September 10, 1970

Mr. C. McQuarrie,  
Atlas Explorations Limited,  
330-355 Burrard Street,  
Vancouver 1, B.C.

Dear Charles:

Breakdown of J.S. Brock Limited time for August is as follows:

Tintina OEX	Geochem	50	107-07-1
Lorna	Geophys	50	134-07-1
Roto	Geophys	50	138-07-1
Gran	Geophys	50	159-07-1
Cub	Geophys	50	131-07-1
Klazan	Drilling	100	125-07-1
Owl	Geophys	100	124-07-1
Bot	Geophys	50	110-07-1

SIB

TOTAL:

500

**PAID**

Yours truly,

*John S. Brock*

60-999 50000

10000

44 44

# JOHN S. BROCK LIMITED

Mining Exploration Services

September 30th, 1970.

In Account with: Atlas Explorations Limited,  
330-355 Burrard Street,  
Vancouver, B.C.

For Services Rendered:

Tintina OEX	Prospecting and geochem
Roto Claims	Geophysics
Lorna Claims	Geophysics
Gran Claims	Geophysics
Jean Claims	Geophysics
Owl Claims	Geophysics
Hess OEX	Geochemistry
Klazan Claims	Drilling

\$100.00  
50.00  
50.00  
50.00  
50.00  
100.00  
50.00  
50.00  
\$500.00

SJB.  
109-07-1 50.00  
101-03-1 50.00  
138-07-1 50.00  
136-07-1 50.00  
137-07-1 50.00  
141-07-1 50.00  
124-07-1 100.00  
102-05-1 50.00  
125-07-1 50.00  
500.00

60-999	500.00
	500.00

CS Q G

*John S. Brock*

PAID

**A LAS EXPLORATIONS LIMITED**

**TIME SHEET**

NAME Louis Corlick  
 TYPE OF WORK Sampler  
 RATE OF PAY \$ 20 / day.

FOR THE MONTH OF August 19 70

DATE	WORK	OFF	FLD. BNS.	CODING	EXPLANATIONS
2					
5					
8					
11					
14					
17					
20	✓			136-08	To LORNA
21	✓			08	
22	✓			08	
23	✓			08	
24	✓			136-05	
25	✓			109-08	
26	✓				
27	✓			139-05	
28	✓			138-05	
29	✓				
30	✓			139-05	

*(attached)*

PAYROLL DEPT. USE ONLY		
30 da. @ 20/day		600.00
@		
@		
GROSS BEFORE BOARD		600.00
BOARD		75.00
GROSS EARNINGS		675.00
DEDUCTIONS		
1) CANADA PENSION	11.25	
2)		
3) INCOME TAX	138.95	
4) GROUP	-	
5) M.S.A.	-	
6) ACCTS. REC.	102.62	
7)		
8) BOARD	75.00	
9)		
10) UIC	6.06	
11) MID MONTH ADVANCE	-	333.88
NET PAY		341.12

**PAID**

TOTAL

**PAYROLL DEPT. USE ONLY**

PROJECT	DAYS	GROSS BEFORE BOARD	FIELD BONUS
136-08-1	6	120.00 ✓	
138-05-1	2	40.00 ✓	
139-05-1	1	20.00 ✓	
136-05-1	1	20.00 ✓	
109-08-1	3	60.00 ✓	
125-21-1	1	20.00 ✓	
125-03-1	1	20.00 ✓	
134-05-1	4	80.00 ✓	
134-08-1	2	40.00 ✓	
134-21-1	3	60.00 ✓	
127-08-1	5	100.00 ✓	
127-21-1	1	20.00 ✓	
<b>TOTAL</b>	<b>30</b>	<b>600.00</b>	

*(Handwritten signature/initials)*

- LABOUR CODING**
- 01 PROPERTY EXAMINATION
  - 02 PROSPECTING
  - 03 STAKING
  - 04 AIRBORN SURVEYS
  - 05 LINE CUTTING
  - 06 GEOLOGY
  - 07 GEOPHYSICS
  - 08 GEOCHEMISTRY
  - 09 DIAMOND DRILLING
  - 10 PHYSICAL WORK
  - 11 ACCESS ROADS
  - 21 CAMP OPERATIONS
  - 91-01 VANC. OFFICE - ADMIN.
  - 92-01 VANC. EXPLORATION OFFICE
  - 93-01 WHITE HORSE BASE
  - 1-01 ROSS RIVER BASE
  - 5-01 GEOCHEM. LAB.
  - 96-01 BULLDOZER

*Corlick*

*P. Dean*

EMPLOYEE

APPROVED





**A LAS EXPLORATIONS LIMITED**

**TIME SHEET**

NAME P. DEAN  
 TYPE OF WORK PARTY CHIEF  
 RATE OF PAY 800 / month

FOR THE MONTH OF August 1970

DATE	WORK	OFF	FLD. BNS.	CODING	EXPLANATIONS
2	✓		✓	124-07	
	✓			"	
3	✓			"	OWL
	✓			"	
5	✓			124-08	
6	✓			124-07	
	✓			"	
8	✓			124-05 21	
9	✓		✓	124-03	(tags)
	✓			-07	
11	✓			07	
12	✓			03	(tags)
	✓			-07	
14	✓			136-21	move to LORNA
15	✓			-08	reccy
	✓		✓	138-03	(staked ROTO)
17	✓			136-08	LORNA
18	✓			136-07	LORNA
	✓			136-07	
20	✓			136-21	
21	✓			136-21	
	✓			-08	reccy
23	✓		✓	139-03	(Gran)
24	✓			136-05	
	✓			124-07	
26	✓			138-05	
27	✓			109-08	
	✓			109-07	
29	✓			136-07	
30	✓		✓	109-21	
	✓			138-07	

PAYROLL DEPT. USE ONLY		
1 mo @		800.00
@		
@		
GROSS BEFORE BOARD		800.00
BOARD		77.50
GROSS EARNINGS		877.50
DEDUCTIONS		
1) CANADA PENSION	14.90	
2)		
3) INCOME TAX	197.10	
4) GROUP	-	
5) M.S.A.	-	
6) ACCTS. REC.	7.29	
7)		
8) BOARD	77.50	
9)		
10)	-	
11) MID MONTH ADVANCE		296.79
NET PAY		580.71

TOTAL

PROJECT	DAYS	GROSS BEFORE BOARD	FIELD BONUS
124-07-1	10	258.09 ✓	51.62 ✓
124-08-1	1	25.80 ✓	5.16 ✓
124-21-1	1	25.80 ✓	5.16 ✓
124-03-1	2	51.62 ✓	10.30 ✓
136-21-1	3	77.42 ✓	15.48 ✓
136-08-1	3	77.42 ✓	15.48 ✓
139-03-1	1	25.80 ✓	5.16 ✓
138-03-1	1	25.81 ✓	5.17 ✓
138-07-1	1	25.80 ✓	5.17 ✓
136-05-1	1	25.80 ✓	5.16 ✓
138-05-1	1	25.80 ✓	5.16 ✓
109-07-1	1	25.81 ✓	5.16 ✓
109-08-1	1	25.80 ✓	5.16 ✓
136-07-1	3	77.43 ✓	15.49 ✓
109-21-1	1	25.80 ✓	5.17 ✓

- LABOUR CODING**
- 01 PROPERTY EXAMINATION
  - 02 PROSPECTING
  - 03 STAKING
  - 04 AIRBORN SURVEYS
  - 05 LINE CUTTING
  - 06 GEOLOGY
  - 07 GEOPHYSICS
  - 08 GEOCHEMISTRY
  - 09 DIAMOND DRILLING
  - 10 PHYSICAL WORK
  - 11 ACCESS ROADS
  - 21 CAMP OPERATIONS
  - 1-01 VANC. OFFICE - ADMIN.
  - 92-01 VANC. EXPLORATION OFFICE
  - 93-01 WHITE HORSE BASE
  - 4-01 ROSS RIVER BASE
  - 5-01 GEOCHEM. LAB.
  - 56-01 BULLDOZER

EMPLOYEE P. Dean

APPROVED

8

160.00

**ATLAS EXPLORATIONS LIMITED**

**TIME SHEET**

NAME Tim Etzel  
 TYPE OF WORK 1 in a cutter  
 RATE OF PAY \$ 20 per day

FOR THE MONTH OF September 19 70

DATE	WORK	OFF	FLD. BNS.	CODING	EXPLANATIONS
1	✓			139-05-1	
2	✓			141-03-1	
3	✓			142-05-1	
4	✓			142-08-1	
5	✓			142-08-1	
6	✓			GRAB-05	
7	✓			Team-03	
8	✓			Team-03	
9	✓			136-21-1	
10	✓			142-21-1	
11	✓			Sun-Tue-05-1	
12	✓			Sun-Tue-05-1	
13	✓				
14	✓				
15	✓				
16	✓				
17	✓				
18	✓			Sun-Tue-05-1	
19	✓			Sun-Tue-08-1	
20	✓			Sun-Tue-08-1	
21	✓			Sun-Tue-08-1	terminated!
22					
23					
24					
25					
26					
27					
28					
29					
30					

PAYROLL DEPT. USE ONLY	
<u>20 1/2 da @ 20/da</u>	<u>410.00</u>
_____ @ _____	_____
_____ @ _____	_____
GROSS BEFORE BOARD	<u>410.00</u>
BOARD	<u>51.25</u>
GROSS EARNINGS	<u>461.25</u>
DEDUCTIONS	
1) CANADA PENSION	<u>7.95</u>
2)	_____
3) INCOME TAX	<u>106.25</u>
4) GROUP	_____
5) M.S.A.	_____
6) ACCTS. REC.	<u>31.44</u>
7)	_____
8) BOARD	<u>51.25</u>
9)	_____
10) UIC 3	<u>4.20</u>
11) MID MONTH ADVANCE	_____
NET PAY	<u>257.26</u>

**PAID**

- LABOUR CODING**
- 01 PROPERTY EXAMINATION
  - 02 PROSPECTING
  - 03 STAKING
  - 04 AIRBORN SURVEYS
  - 05 LINE CUTTING
  - 06 GEOLOGY
  - 07 GEOPHYSICS
  - 08 GEOCHEMISTRY
  - 09 DIAMOND DRILLING
  - 10 PHYSICAL WORK
  - 11 ACCESS ROADS
  - 21 CAMP OPERATIONS
  - 1-01 VANC. OFFICE - ADMIN.
  - 92-01 VANC. EXPLORATION OFFICE
  - 93-01 WHITE HORSE BASE
  - 4-01 ROSS RIVER BASE
  - 5-01 GEOCHEM. LAB.
  - 5-01 BULLDOZER

PROJECT	DAYS	GROSS BEFORE BOARD	FIELD BONUS
<u>139-05-1</u>	<u>6</u>	<u>120.00</u> ✓	_____
<u>141-03-1</u>	<u>2</u>	<u>40.00</u> ✓	_____
<u>142-05-1</u>	<u>8</u>	<u>160.00</u> ✓	_____
<u>142-08-1</u>	<u>2 1/2</u>	<u>50.00</u> ✓	_____
<u>136-21-1</u>	<u>1</u>	<u>20.00</u> ✓	_____
<u>142-21-1</u>	<u>1</u>	<u>20.00</u> ✓	_____
	<u>20 1/2</u>	<u>410.00</u>	_____

EMPLOYEE Tim Etzel

John 109

APPROVED [Signature]

September 1970

NAME G. BRAY  
 TYPE OF WORK Camp  
 RATE OF PAY 6.57 / month

DATE	WORK	OFF	FLD. BNS.	CODING	EXPLANATIONS
1	✓			136-21	
2	✓			138-21	
3	✓			139-21	
4	✓			RTR-21	
5	✓			SPAN-21	
6	✓			SPAN-21	
7	✓			RTR-21	OUT TO ROSS RIVER LAID OFF BECAUSE OF HEATH.
8					
9					
10					
11					
12					
13					
14					
15					
16					
17					
18					
19					
20					
21					
22					
23					
24					
25					
26					
27					
28					
29					
30					
31					

PAYROLL DEPT. USE ONLY		
7 da. @ 21.66/da	151.62	
_____ @ _____	_____	
_____ @ _____	_____	
GROSS BEFORE BOARD	151.62	
BOARD	17.50	
GROSS EARNINGS	169.12	
DEDUCTIONS		
1) CANADA PENSION	2.84	
2)		
3) INCOME TAX	35.65	
4) GROUP	-	
5) M.S.A.	-	
6) ACCTS. REC.	1.95	
7)		
8) BOARD	17.50	
9)		
10) UIC	1.00	
11) MID MONTH ADVANCE	-	59.34
NET PAY		109.78

LABOUR CODING	
-01	PROPERTY EXAMINATION
-02	PROSPECTING
-03	STAKING
-04	AIRBORN SURVEYS
-05	LINE CUTTING
-06	GEOLOGY
-07	GEOPHYSICS
-08	GEOCHEMISTRY
-09	DIAMOND DRILLING
-10	PHYSICAL WORK
-11	ACCESS ROADS
-21	CAMP OPERATIONS
9	-01 VANC. OFFICE - ADMIN.
92	-01 VANC. EXPLORATION OFFICE
93	-01 WHITE HORSE BASE
S	-01 ROSS RIVER BASE
S	-01 GEOCHEM. LAB.
SC	-01 BULLDOZER

PAYROLL DEPT. USE ONLY

PROJECT	DAYS	GROSS BEFORE BOARD	FIELD BONUS
136-21-1	2	43.32 ✓	<del>PAID</del>
138-21-1	2	43.32 ✓	
139-21-1	3	64.98 ✓	
_____	_____	_____	
_____	_____	_____	
_____	_____	_____	
_____	_____	_____	
_____	_____	_____	
_____	_____	_____	
_____	7	151.62	

**PAID**

EMPLOYEE Gray 037

APPROVED [Signature]

NAME E. Kane  
 TYPE OF WORK line cutter  
 RATE OF PAY 20 \$ / day

FOR THE MONTH OF August 19 70

DATE	ORX	OFF	FLD. BNS.	CODING	EXPLANATIONS
1	✓			-03	} staking LORNA
2	✓			-03	
3	✓			-03	
4	✓			124-05	to OWL
5	✓			"	
6	✓			"	
7	✓			"	
8	✓			"	
9	✓			"	
10	✓			"	
11	✓			"	
12	✓			"	
13	✓			124-05	
14	✓			136-21	move to LORNA
15	✓			-03	staked GRAN
16	✓			-03	" ROTO
17	✓			136-05	(LORNA)
18	✓			136-05	"
19	✓			136-05	
20	✓			136-05	
21	✓			138-05	ROTO
22	✓			-05	"
23	✓			-05	"
24	✓			-05	terminates
25					
26					
27					
28					ADVANCE #142 - 100.00
29					ALSO " #144 - 100.00
30					
31					

PAYROLL DEPT. USE ONLY		
24 da. @ 20/d.		480.00
@		
@		
GROSS BEFORE BOARD		480.00
BOARD		60.00
GROSS EARNINGS		540.00
DEDUCTIONS		
1) CANADA PENSION	8.82	
2)		
3) INCOME TAX	103.15	
4) GROUP	-	
5) M.S.A.	-	
6) ACCTS. REC.	235.19	
7)		
8) BOARD	60.00	
9)		
10)	6.06	
11) MID MONTH ADVANCE	403.22	
NET PAY		136.78

- LABOUR CODING
- 01 PROPERTY EXAMINATION
  - 02 PROSPECTING
  - 03 STAKING
  - 04 AIRBORN SURVEYS
  - 05 LINE CUTTING
  - 06 GEOLOGY
  - 07 GEOPHYSICS
  - 08 GEOCHEMISTRY
  - 09 DIAMOND DRILLING
  - 10 PHYSICAL WORK
  - 11 ACCESS ROADS
  - 21 CAMP OPERATIONS
  - 91-01 VANC. OFFICE - ADMIN.
  - 92-01 VANC. EXPLORATION OFFICE
  - 9 01 WHITE HORSE BASE
  - 9 01 ROSS RIVER BASE
  - 95-01 GEOCHEM. LAB.
  - 96-01 BULLDOZER

PROJECT	DAYS	GROSS BEFORE BOARD	FIELD BONUS
136-03-1	3	60.00 ✓	
124-05-1	10	200.00 ✓	
136-21-1	1	20.00 ✓	
139-03-1	1	20.00 ✓	
138-03-1	1	20.00 ✓	
136-05-1	4	80.00 ✓	
138-05-1	4	80.00 ✓	
24		480.00	

EMPLOYEE Kane

115

APPROVED P. Deon



**A LAS EXPLORATIONS LIMITED**

**TIME SHEET**

NAME Sam McLeod  
 TYPE OF WORK Sampler  
 RATE OF PAY \$20 per day

FOR THE MONTH OF August 1970

DATE	WORK	OFF	FLD. BNS.	CODING	EXPLANATIONS
2					
3					
5					
6					
8					
9					
11					
12					
14					
15					
17					
18					
20	✓			109-08	to LORNA
21	✓			"	"
22	✓			"	"
23	✓			138-05	ROTO
24	✓				
26	✓				
27	✓				
29	✓				
30	✓				
				139-05	

PAYROLL DEPT. USE ONLY		
	<u>13 da. @ 20 da.</u>	<u>260.00</u>
	@	
	@	
GROSS BEFORE BOARD		<u>260.00</u>
BOARD		<u>32.50</u>
GROSS EARNINGS		<u>292.50</u>
DEDUCTIONS		
1) CANADA PENSION	<u>4.82</u>	
2)		
3) INCOME TAX	<u>18.15</u>	
4) GROUP	<u>-</u>	
5) M.S.A.	<u>-</u>	
6) ACCTS. REC.	<u>-</u>	
7)		
8) BOARD	<u>32.50</u>	
9)		
10) 2	<u>2.90</u>	
11) MID MONTH ADVANCE	<u>-</u>	<u>58.27</u>
NET PAY		<u>234.23</u>

TOTAL

PAYROLL DEPT. USE ONLY			
PROJECT	DAYS	GROSS BEFORE BOARD	FIELD BONUS
<u>109-08-1</u>	<u>4</u>	<u>80.00</u> ✓	<del>_____</del>
<u>138-05-1</u>	<u>8</u>	<u>160.00</u> ✓	<del>_____</del>
<u>139-05-1</u>	<u>1</u>	<u>20.00</u> ✓	<del>_____</del>
	<u>13</u>	<u>260.00</u>	

- LABOUR CODING**
- 01 PROPERTY EXAMINATION
  - 02 PROSPECTING
  - 03 STAKING
  - 04 AIRBORN SURVEYS
  - 05 LINE CUTTING
  - 06 GEOLOGY
  - 07 GEOPHYSICS
  - 08 GEOCHEMISTRY
  - 09 DIAMOND DRILLING
  - 10 PHYSICAL WORK
  - 11 ACCESS ROADS
  - 21 CAMP OPERATIONS
  - 1-01 VANC. OFFICE - ADMIN.
  - 92-01 VANC. EXPLORATION OFFICE
  - 93-01 WHITE HORSE BASE
  - 4-01 ROSS RIVER BASE
  - 5-01 GEOCHEM. LAB.
  - 55-01 BULLDOZER

EMPLOYEE Sam McLeod 097

APPROVED P Deon

NAME S. Moberg  
 TYPE OF WORK Linecutting  
 RATE OF PAY \$ 20.1/day

FOR THE MONTH OF September 1970

DATE	WORK	OFF	FLD. BNS.	CODING	EXPLANATIONS
1	✓			139-05	
2	✓			139-08	
3	✓			136-05	
4	✓			136-21	
5	✓			136-21	
6	✓			GRNB-05	
7	✓			GRNB-03	
8	✓			GRNB-08	
9	✓			136-21-1	
10	✓			136-21-1	
11	✓			Sun-Tue-05-1	
12	✓				
13	✓				
14	✓				
15	✓				
16	✓				
17	✓				
18	✓				
19	✓			Sun-Tue-05-1	
20	✓			Sun-Tue-08-1	
21	✓			Sun-Tue-03-1	1/2 day <u>Terminated</u>
22					
23					
24					
25					
26					
27					
28					
29					
30					
31					
TOTAL					

PAYROLL DEPT. USE ONLY		
<u>20.1/day @ 20.1/day</u>	<u>410.00</u>	
_____ @ _____	_____	
_____ @ _____	_____	
GROSS BEFORE BOARD	<u>410.00</u>	
BOARD	<u>51.25</u>	
GROSS EARNINGS	<u>461.25</u>	
DEDUCTIONS		
1) CANADA PENSION	<u>7.85</u>	
2)	_____	
3) INCOME TAX	<u>13.90</u>	
4) GROUP	_____	
5) M.S.A.	_____	
6) ACCTS. REC.	<u>11.00</u>	
7)	_____	
8) BOARD	<u>51.25</u>	
9)	_____	
10) UIC 3	<u>4.20</u>	
11) MID MONTH ADVANCE	_____	<u>127.20</u>
NET PAY	<u>328.05</u>	

**PAID**

LABOUR CODING	
-01	PROPERTY EXAMINATION
-02	PROSPECTING
-03	STAKING
-04	AIRBORN SURVEYS
-05	LINE CUTTING
-06	GEOLOGY
-07	GEOPHYSICS
-08	GEOCHEMISTRY
-09	DIAMOND DRILLING
-10	PHYSICAL WORK
-11	ACCESS ROADS
-21	CAMP OPERATIONS
-01	VANC. OFFICE - ADMIN.
92-01	VANC. EXPLORATION OFFICE
93-01	WHITE HORSE BASE
-01	ROSS RIVER BASE
-01	GEOCHEM. LAB.
96-01	BULLDOZER

PROJECT	DAYS	GROSS BEFORE BOARD	FIELD BONUS
139-05-1	4	80.00	
139-08-1	2	40.00	
136-05-1	1	20.00	
136-21-1	1	20.00	
142-05-1	9	180.00	
142-08-1	1/2	30.00	
142-21-1	1	20.00	
138-05-1	1	20.00	
	<u>20 1/2</u>	<u>410.00</u>	

EMPLOYEE S. Moberg Jan 097

APPROVED [Signature]

NAME G. Shuckoon  
 TYPE OF WORK linecutter  
 RATE OF PAY 20\$ per day.

FOR THE MONTH OF August 19 70

DATE	WORK	OFF	FLD. BNS.	CODING	EXPLANATIONS
1	✓			-03	} staked LORNA
2	✓			-03	
3	✓			-03	
4	✓			124-05	to OWL
5	✓			4	
6	✓			4	
7	✓			4	
8	✓			4	
9	✓			4	
10	✓			4	
11	✓			4	
12	✓			4	
13	✓			24-05	
14	✓			21	to LORNA
15	✓			-03	staked GRAN
16	✓			-03	staked ROTO
17	✓			136-05	(LORNA)
18	✓			136-05	"
19	✓			136-05	"
20	✓			136-05	"
21	✓			138 05	ROTO
22	✓				
23	✓				
24	✓				
25	✓				
26	✓				
27	✓				
28	✓				
29	✓				
30	✓				
31	✓			136-05	

PAYROLL DEPT. USE ONLY	
31 da. @ 20 da	620.00
@	
@	
GROSS BEFORE BOARD	620.00
BOARD	77.50
GROSS EARNINGS	697.50
DEDUCTIONS	
1) CANADA PENSION	11.60
2)	
3) INCOME TAX	141.30
4) GROUP	-
5) M.S.A.	-
6) ACCTS. REC.	39.44
7)	
8) BOARD	77.50
9)	
10)	6.06
11) MID MONTH ADVANCE	278.96
NET PAY	418.54

**PAID**

- LABOUR CODING**
- 01 PROPERTY EXAMINATION
  - 02 PROSPECTING
  - 03 STAKING
  - 04 AIRBORN SURVEYS
  - 05 LINE CUTTING
  - 06 GEOLOGY
  - 07 GEOPHYSICS
  - 08 GEOCHEMISTRY
  - 09 DIAMOND DRILLING
  - 10 PHYSICAL WORK
  - 11 ACCESS ROADS
  - 21 CAMP OPERATIONS
  - 91-01 VANC. OFFICE - ADMIN.
  - 92-01 VANC. EXPLORATION OFFICE
  - 93-01 WHITE HORSE BASE
  - 94-01 ROSS RIVER BASE
  - 95-01 GEOCHEM. LAB.
  - 96-01 BULLDOZER

PROJECT	DAYS	GROSS BEFORE BOARD	FIELD BONUS
136-03-1	3	60.00 ✓	
124-05-1	10	200.00 ✓	
136-21-1	1	20.00 ✓	
139-03-1	1	20.00 ✓	
138-03-1	1	20.00 ✓	
136-05-1	5	100.00 ✓	
138-05-1	10	200.00 ✓	
	<u>31</u>	<u>620.00</u>	

EMPLOYEE Shuckoon 114

APPROVED P. Deon

**ATLAS EXPLORATIONS LIMITED**

**TIME SHEET**

N/ E A. Shaboon  
 TYPE OF WORK \_\_\_\_\_  
 R. E OF PAY \_\_\_\_\_

FOR THE MONTH OF Sept 19 76

DATE	WORK	OFF	FLD. BNS.	CODING	EXPLANATIONS
1	✓			129-05-1	
2	✓			-	
3	✓			-	
4	✓			-	
5	✓			138-05-1	
6	✓			126-05-1	
7	✓			141-03-1	
8	✓			-	
9	✓			138-21-1	
10	✓			142-05-1	
11	✓			-	
12	✓			-	
13	✓			-	
14	✓			142-21-1	
15	✓			142-08-1	
16	✓			142-05-1	
17					TERMINATED
18					
19					
20					
21					490 to father
22					
23					
24					
25					
26					
27					
28					
29					
30					
31					

PAYROLL DEPT. USE ONLY		
<u>15 1/2 da @ 20/da</u>		<u>310.00</u>
@ _____		_____
@ _____		_____
GROSS BEFORE BOARD		<u>310.00</u>
BOARD		<u>38.75</u>
GROSS EARNINGS		<u>348.75</u>
DEDUCTIONS		
1) CANADA PENSION	<u>583</u>	_____
2)	_____	_____
3) INCOME TAX	<u>72.15</u>	_____
4) GROUP	_____	_____
5) M.S.A.	_____	_____
6) ACCTS. REC.	<u>16.975</u>	_____
7)	_____	_____
8) BOARD	<u>38.75</u>	_____
9)	_____	_____
10) UIC	<u>3.03</u>	_____
11) MID MONTH ADVANCE	_____	<u>589.46</u>
NET PAY		<u>59.29</u>

**PAID**

- LABOUR CODING**
- 01 PROPERTY EXAMINATION
  - 02 PROSPECTING
  - 03 STAKING
  - 04 AIRBORN SURVEYS
  - 05 LINE CUTTING
  - 06 GEOLOGY
  - 07 GEOPHYSICS
  - 08 GEOCHEMISTRY
  - 09 DIAMOND DRILLING
  - 10 PHYSICAL WORK
  - 11 ACCESS ROADS
  - 21 CAMP OPERATIONS
  - 01 VANC. OFFICE - ADMIN.
  - 01 VANC. EXPLORATION OFFICE
  - 93-01 WHITE HORSE BASE
  - 01-01 ROSS RIVER BASE
  - 01 GEOCHEM. LAB.
  - 01 BULLDOZER

PROJECT	DAYS	GROSS BEFORE BOARD	FIELD BONUS
<u>136-05-1</u>	<u>1</u>	<u>20.00</u> ✓	
<u>138-05-1</u>	<u>1</u>	<u>20.00</u> ✓	
<u>138-21-1</u>	<u>1</u>	<u>20.00</u> ✓	
<u>139-05-1</u>	<u>4</u>	<u>80.00</u> ✓	
<u>141-03-1</u>	<u>2</u>	<u>40.00</u> ✓	
<u>142-05-1</u>	<u>4</u>	<u>80.00</u> ✓	
<u>142-08-1</u>	<u>1 1/2</u>	<u>30.00</u> ✓	
<u>142-21-1</u>	<u>1</u>	<u>20.00</u> ✓	
	<u>15 1/2</u>	<u>310.00</u>	

*[Handwritten signature]*

EMPLOYEE A. Shaboon 114

APPROVED [Signature]



GRAN REPORT WRITING SUMMARY

SCHEDULE "B"

	TOTL.	GEOLOGY	GEOCHEM	GEOPHYSICS
W. ROBERTS	150.00	50.00	50.00	50.00

**ATLAS EXPLORATIONS LIMITED**

**TIME SHEET**

NAME W. Roberts  
 TYPE OF WORK \_\_\_\_\_  
 RATE OF PAY \_\_\_\_\_

FOR THE MONTH OF February 19 71

DATE	WORK	OFF	FLD. BNS.	CODING	EXPLANATIONS
1					
3					
6					
9					
11					
12					
14					
15					
17					
18					
20					
21					
22					
23					
24					
25					
27					
28					
30					
31					
TOTAL					

PAYROLL DEPT. USE ONLY	
<u>1-000</u> @ _____	<u>1000.00</u>
_____ @ _____	_____
_____ @ _____	_____
GROSS BEFORE BOARD	_____
BOARD	_____
GROSS EARNINGS	<u>1000.00</u>
DEDUCTIONS	
1) CANADA PENSION	<u>17.10</u>
2)	_____
3) INCOME TAX	<u>741.15</u>
4) GROUP	<u>3.24</u>
5) M.S.A.	<u>2.95</u>
6) ACCTS. REC.	_____
7)	_____
8) BOARD	<u>1</u>
9)	_____
10)	<u>17.12 (over 2.6)</u>
11) MID MONTH ADVANCE	<u>210.00</u> <u>236.56</u>
NET PAY	<u>363.44</u>

**PAYROLL DEPT. USE ONLY**

PROJECT	DAYS	GROSS BEFORE BOARD	FIELD BONUS
109-06-1	<u>87</u>	<u>750.00</u> <del>460.00</del> ✓	_____
136-06-1	<u>2</u>	<u>100.00</u> ✓	_____
136-07-1	<u>1</u>	<u>50.00</u> ✓	_____
136-08-1	<u>1</u>	<u>50.00</u> ✓	_____
138-06-1	<u>2</u>	<u>100.00</u> ✓	_____
138-07-1	<u>1</u>	<u>50.00</u> ✓	_____
139-06-1	<u>1</u>	<u>50.00</u> ✓	_____
139-07-1	<u>1</u>	<u>50.00</u> ✓	_____
139-08-1	<u>1</u>	<u>50.00</u> ✓	_____
141-06-1	<u>2</u>	<u>100.00</u> ✓	_____
141-07-1	<u>1</u>	<u>50.00</u> ✓	_____
	<u>20</u>		

- LABOUR CODING**
- 01 PROPERTY EXAMINATION
  - 02 PROSPECTING
  - 03 STAKING
  - 04 AIRBORN SURVEYS
  - 05 LINE CUTTING
  - 06 GEOLOGY
  - 07 GEOPHYSICS
  - 08 GEOCHEMISTRY
  - 09 DIAMOND DRILLING
  - 10 PHYSICAL WORK
  - 11 ACCESS ROADS
  - 21 CAMP OPERATIONS
  - 01 VANC. OFFICE - ADMIN.
  - 92-01 VANC. EXPLORATION OFFICE
  - 93-01 WHITE HORSE BASE
  - 94-01 ROSS RIVER BASE
  - i-01 GEOCHEM. LAB.
  - i-01 BULLDOZER

EMPLOYEE Roberts

107

APPROVED [Signature]



GRAN ASSAY SUMMARY

SCHEDULE "C"

ATLAS LAB

246 SAMPLES @ \$1.70 -

\$ 418.20

# ATLAS EXPLORATIONS LIMITED

330 MARINE BUILDING  
 355 BURRARD STREET  
 VANCOUVER 1, B.C.

October 7th, 1970.

PROGRESS REPORT - GEOCHEM LAB, WHITEHORSE  
PERIOD - September, 1970.

## Calculation of Costs

Sample Preparation per sample	\$0.20
1st Element Determination	1.00
2nd Element Determination	0.25
3rd Element Determination	0.25
4th Element Determination	<u>0.50</u>
 Cost per Sample	 \$2.20

Water samples calculated at \$1.00 per sample determination (1) and 25¢ per determination thereafter.

### 101 - General OEX - Yukon

25 samples @ \$2.20 - 4 elements	55.00	
46 samples @ \$1.70 - 3 elements	<u>78.20</u>	

133.20

### 101 - General OEX - Yukon - (Boswell Pine)

152 samples @ \$1.70 - 3 elements

258.40

391.60

### 102 - Hess OEX

173 samples @ \$1.70 - 3 elements

294.10

### 109 - Tintina OEX

934 samples @ \$1.70 - 3 elements

(1,587.80

109 - <u>Tintina OEX (Livna)</u>			
	902 samples @ \$1.70 - 3 elements	1,533.40	
	7 H2O samples @ \$1.50 - 3 elements	<u>10.50</u>	3131.70 (1,543.90)
115 - <u>Victor OEX - Nansen</u>			
	591 samples @ \$1.70 - 3 elements		1,004.70
115 - <u>Victor OEX - Ann</u>			
	88 samples @ \$1.70 - 3 elements	149.60	1281.90 } 277.20
	88 samples @ \$1.45 - 2 elements	<u>127.60</u>	
127 - <u>Oats</u>			
	2 samples @ \$1.70 - 3 elements		3.40
131 - <u>Cub</u>			
	4 samples @ \$1.70 - 3 elements		6.80
132 - <u>Tantalus Coal</u>			
	7 samples @ \$1.70 - 3 elements		11.90
134 - <u>Mim</u>			
	1 sample @ \$1.70 - 3 elements		1.70
136 - <u>Lorna</u>			
	216 samples @ \$1.70 - 3 elements		367.20
138 - <u>Roto</u>			
	114 samples @ \$1.70 - 3 elements		193.80
139 - <u>Gran</u>			
	246 samples @ \$1.70 - 3 elements		<u>418.20</u>
	<b>TOTAL COST</b>		<b><u>\$6,102.30</u></b>
<b>Total Samples:</b>	25 soils @ \$2.20	\$ 55.00	
	3476 soils @ \$1.70	5,909.20	
	88 soils @ \$1.45	127.60	
	7 H2O @ \$1.50	<u>10.50</u>	
	<b>Total Cost Check</b>	<b>\$6,102.30</b>	

Respectfully submitted,

October 7, 1970

B. A. Spanier,  
Chief Technician

# GRAN EXPENSE SUMMARY

SCHEDULE "D"

	CAMP COSTS		ROTARY	FIXED	TOTAL
	GROCERIES	OTHER	WINU	WINU	
J. S. BROCK		600			
T. COATES		900			
EXPLOSIVES		1411			
OVERLAND			143000		
T. N. T. A.				113863	
WHITE PASS				1152	
ARRAS FUEL				17582	
CAMP FOOD EST <sup>\$10.00</sup> PER MAN DAY - (63-3) (\$10.00)	60000				
CAMP WAGES (SCHEDULE "A")	9494				
	69494	2911	143000	132597	348002
	724.05				

## COST TYPE SUMMARY

GEOLOGY	$\begin{array}{r} 7 \\ 36 \\ \hline 23 \\ 56 \\ \hline 26 \\ 56 \end{array}$	9051		16576	25627
GEOCHEM		29739		54441	84180
GEOPHYSICS		33615	143000	61580	238195
		724.05	143000	132597	348002

MONTH	DATE	PLACE	MEALS Personal Only	ROOMS Attach Receipts	Entertain- ment	TRANSPORTATION		OTHER		(PROJECT/PROPERTY CHARGE TO)
						Ticket Fares (Attach Stubs)	Garage Auto Taxi	Telephone Telegraph	Incidentals (Tips, etc.)	
SEPT	1	LEONARD CORP.								
	2	"								
	3	" " BUSSE	5 <sup>00</sup>							BUSSE BUSSE 93
	4	LEONARD CORP.	15 <sup>00</sup>							LEONARD CORP 121
	5									
	6	LEONARD CORP.	16 <sup>00</sup>							LEONARD CORP 95
	7	TO GARY CHAMBERS					6 <sup>00</sup>			GARY CHAMBERS 129
	8	FUEL								
	9	FUEL								
	10	FUEL								
	11	BUSSE	4 <sup>00</sup>							
	12									
	13									
	14									
	15		9 <sup>15</sup>							
	16		8 <sup>00</sup>							
	17									93
	18									
	19		8 <sup>00</sup>							
	20									
	21		8 <sup>00</sup>							
	22		6 <sup>00</sup>							
	23				5 <sup>00</sup>					TRIP EXPENSE - 115
	24	TO GARY					8 <sup>00</sup>			115
	25									
	26									
	27									
	28									
	29									
	30									
	31									
			81 <sup>00</sup>		5 <sup>00</sup>		17 <sup>00</sup>			Sub Total \$ 103

Travel forward from Reverse Side	\$ 50	30
is (attach tickets)	\$	
rt	\$ 153	60

ACCOUNT	AMOUNT
12-018	23 <sup>00</sup>
12-064	10 <sup>00</sup>
17-066	16 <sup>00</sup>
14-114	8 <sup>35</sup>
93-03	53 <sup>05</sup>
95-03	16 <sup>00</sup>
TOTAL 151-22	153 <sup>00</sup>

Cash Funds	
any	
with	153 <sup>00</sup>

**PAID**

*John S. Brown*  
Signature

OBJECT Yukon Expedition  
OF  
TRIP

*[Signature]*  
Approved

ACCOUNT	AMOUNT
119-06-3	7 <sup>00</sup>
15-27-2	13 <sup>30</sup>
159-27-2	6 <sup>00</sup>
TOTAL	153 <sup>00</sup>

In front of this form. This will include tickets purchased by the company for your trip.  
have made on behalf of the company on the section on the back of this form.  
m your advance. No expenses should be charged direct to the company.  
his report and attach all possible receipts for payments you have made..

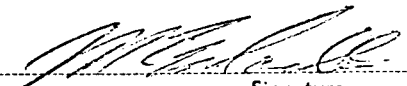
# TRAVEL and EXPENSE REPORT

RECEIVED

MONTH	DATE	PLACE	MEALS Personal Only	ROOMS Attach Receipts	Entertainment	TRANSPORTATION		OTHER		(PROJECT/PROPERTY CHARGE TO)
						Ticket Fares (Attach Stubs)	Garage Auto Taxi	Telephone Telegraph	Incidentals (Tips, etc.)	
	1									
	2									
	3									
	4									
	5									
	6									
	7									
	8									
	9									
	10									
	11									
	12									
	13									
	14									
	15									
	16									
	17									
	18									
	(19)	Haines - Sat.	4.50							CUB
	20									
	21									
	22									
	23									
	(24)	Tesslin	57.50	12.00						YUKON OEX PROPERTY EXAM.
	25	"	5.50							(COPIES & CONSNT)
	26									
	27									
	28									
	29									
	30									
	31									
Travel Expenses Totals			171.00	12.00						Sub Total \$ 29.00

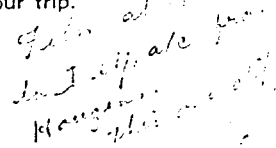
Expenditures other than Travel forward from Reverse Side \$ 29.00  
 s (attach tickets) \$ 29.00  
 Total \$ 58.00

ACCOUNT	AMOUNT	
101-21-3	6.60	Cash Funds
101-01-3	24.50	
31-21-2	10.10	pany
131-22-2	5.90	
31-22-6	2.50	
139-22-2	9.40	with
<b>TOTAL</b>	<b>58.00</b>	

  
 Signature

OBJECT CUB PROJECT  
 OF YUKON OEX, MONTH-END  
 TRIP ACCOUNT

JB - deduct \$ 4.75 from  
 58.00 for film. Film charged  
 on love expense account.

Approved  
  
 Approved

- All expenses should be paid from your advance. No expenses should be charged direct to the company.
- Return all unused tickets with this report and attach all possible receipts for payments you have made.

BOX 5247 STN. A  
CALGARY 9, ALBERTA

# EXPLOSIVES LIMITED

ALL CLAIMS REFER TO INVOICE NO. 04915

SHIP TO <i>Ames</i>	SALESMAN	
	PPD. & CHG. CUST.	PRICED BY
	DATE SHIPPED <i>Aug 24</i>	PRICE CK'D BY
	CODED BY	EXTENDED BY
	CODE CK'D BY	EXT. CK'D BY
SHIP VIA <i>Canadian</i>	PURCHASE ORDER NUMBER <b>3732</b>	
HIGHWAY MILEAGE <i>1</i>	BUSH TIME	WAITING TIME

SOLD TO \_\_\_\_\_  
ADDRESS \_\_\_\_\_

SHIPPED FROM \_\_\_\_\_ DATE \_\_\_\_\_

	FEDERAL SALES TAX		ORDERED	SHIPPED	DESCRIPTION	CODE NO.	MULT. WEIGHT	PRICE	PER	NET AMOUNT
	CALC.	TOTAL								
1	8 x 104	11.52	144	144	1 kg. Duplex	75	144	1.11	157.44	
2	X									
3	1 x 19	.19	1	1	Red Duplex	74-100	1	2.92	2.92	
4	X									
5	X									
6	X				Flugging - 50% LIVNA - DWK - ROT - GRAN - LORNA					
7	X				25% TINTINA - FURE LAKE					
8	X				25% VICTOR DEX					
9	X									
10	X				WIRE PRD W <sup>m</sup> KARVINEN #3					
11	X									
12	X									
13	X									
14	X									
15	X	11.71								

PURCHASE ORDER

P.R.D.

PAID

FEDERAL SALES TAX INCLUDED

TRANS. CALC. \_\_\_\_\_ MILES @ \_\_\_\_\_ = \_\_\_\_\_ B.T. HRS. @ \_\_\_\_\_ = \_\_\_\_\_ W.T. HRS. @ \_\_\_\_\_ = \_\_\_\_\_

PURCHASER AGREES TO LEGALLY STORE AND TRANSPORT EXPLOSIVES (EXPLOSIVES PURCHASER - SEE BACK OF PF)

RECEIVED ABOVE IN GOOD ORDER. SIGNATURE *J. Amant*

PACKING SLIP

ACCOUNT	AMOUNT	POSTED
12-055	3.11	
115-21-3	3.52	
119-21-3	4.97	
124	14.12	
135	14.11	
139	14.11	
TOTAL	117.23	
DDS. + XTENS.		
O.K. TO PAY		
CODING		
UNTS. OF INVOICE	144	

HEAD OFFICE

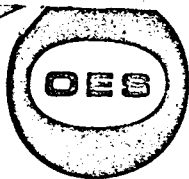
PURCHASING AGENT

REC'D. BY

VIA

MATERIAL REC'D.

ACCOUNTING



# EXPLORATION SERVICES (1969) LTD.

1347 - 12th AVENUE S.W.  
CALGARY 3, ALBERTA, CANADA

TELEPHONE  
403 - 244-2191

MAGNETICS  
I.P. SURVEYS  
RADIO ACTIVE SURVEYS  
DRILLING  
LINE CLEAN UP  
LINE CUTTING  
GEOLOGY

October 26th, 1970

RECEIVED  
OCT 29 1970

Mr. C.A. Malish  
Accounting Department  
Atlas Explorations Limited  
355 Burrard Street  
VANCOUVER 1, B.C.

Dear Mr. Malish:

Here is a breakdown of expenses for each Claim Group worked in the 1970 season.

139	GRAN	\$1,430.00
141	JEAN	\$ 260.00
138	ROTO	\$ 980.00 ✓
<u>arril.</u> → <del>137</del>	SUN	\$1,970.00 ✓
124	OWL	\$1,740.00 ✓
136	LORNA	\$1,220.00 ✓
	TOTAL	<u>\$7,600.00</u>

ACCOUNT	AMOUNT
<del>137</del> 142-07-2	1970 00
124-01-2	1740 00
136-07-2	1220 00
138-07-2	980 00
139-07-2	1430 00
141-07-2	260 00
TOTAL	7600 00
ADDS. + EXTENS.	CODING
	O.K. TO PAY
	POSTED

We hope this will be of some assistance.

Yours truly,

OVERLAND EXPLORATION  
SERVICES (1969) LTD.

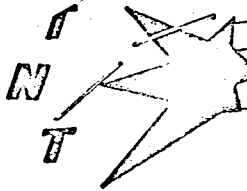
*W.T. Salt*

W.T. Salt

PAID

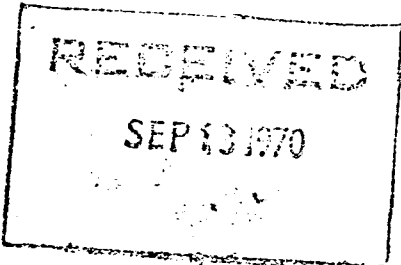
WTS/jp





# TRANS NORTH TURBO AIR LTD.

BOX 1977      PHONE 668-2177  
WHITEHORSE, YUKON



TO: Γ

Atlas Explorations Ltd.  
330 Marine Building  
355 Burrard Street  
VANCOUVER 1, B.C.

DATE August 31, 1970

INVOICE NO. 638-70

P.O. NO.

TO: Charge you with the charter of Bell 47G-3B-2  
Helicopter CF-QJX  
Crew: Armand and Engst

FLYING: August 20 to 28, 1970  
Daily Flight Report Nos. 3424, 3425, 3429,  
3430, 3431

5.7 hours at \$155.00 per hour \$ 883.50  
(rate when carrier supplies fuel)

4.9 hours at \$144.00 per hour 705.60  
(rate when charterer supplies fuel)

INVOICE TOTAL \$1,589.10

*Credit received  
721-70  
for 11.00 per hr  
all charter  
fuel.*

ACCOUNT	AMOUNT	
109-22-3	915	80
136-22-3	198	20
138-22-3	331	10
139-22-3	144	00
TOTAL	1589	10
ADDS. + EXTENS.	CODING	O.K. TO PAY
		POSTED

One per cent interest per month will be charged on all invoices not paid within 30 days of date issued.

*Atlas explored all TNTA fuel at Anvil ∴ no fuel charge.*

*atlas fuel charge*

109-	6.1
136-	1.3
138	2.2
139	1.0
<hr/>	
	10.6

# TRANS NORTH TURBO AIR LTD.

BOX 1977 PHONE 668-2177  
WHITEHORSE, YUKON



TO: Γ

Atlas Explorations Ltd.  
330 Marine Building  
355 Burrard Street  
VANCOUVER 1, B.C.

RECEIVED  
OCT 8 70

DATE September 30, 1970

INVOICE NO. 720-70

P.O. NO.

TO: Charge you with the following helicopter charters:

Bell 47G-3B-2 Helicopter CF-ETR  
Crew: Vickers and Fensom

FLYING: September 19, 1970  
Daily Flight Report No. 3113

2.7 hours at \$115.00 per hour  
(rate when carrier supplies fuel)

PLUS: Excess cost of fuel at Granite Mountain  
Charterer assessed with cost  
of fuel over 60¢ per gallon

32 gallons at 52¢ per gallon

Bell 47G-3B-1 Helicopter CF-VUE  
Crew: Plaster and Engst

FLYING: September 1, 2 and 4, 1970  
Daily Flight Report Nos. 4855, 4857, 4859

7.2 hours at \$144.00 per hour  
(rate when charterer supplies fuel)

Canadian Coachways invoice nos. 849, 1813494  
to cases oil shipped to Dawson City  
pick up there by contract helicopter)

L A I D

125-22-3 } \$ 310.50  
average =  $\frac{1053.10}{7.2} = 146.2639$

1,036.80

16.30

\$1,380.24

TOTAL

One per cent interest per month will be charged on all invoices not paid within 30 days of date issued.

ATLAS FUEL

PAID

OK 9/30/70

ACCOUNT	AMOUNT
102-22-3	
109-22-3	234 02
125-22-3	29 25
138-22-3	327 14
139-22-3	336 41
	453 42
TOTAL	1380 24
A DS. + EXTENS.	CODING
O.K.	TO PAY

PLUS: Fuel supplied by TNTA at Burwash  
 63 gallons at 80¢ per gallon  
 Crew expenses at Kluane  
 (cost of two men for two days)  
 Two cases of oil supplied by TNTA  
 at \$18.00 per case  
 Freight charges as per attached GNA  
 invoice #18978 (spares box to Anvil)

*need book? 146.90 / 49.4*

\$ 50.40  
 56.00  
 36.00  
 4.50

INVOICE TOTAL

\$6,568.90  
~~282.00~~  
 6,286.90

*less questioned*

NOTE: Total hours flown on this contract  
 to September 30, 1970 - 640.7

PAID

ACCOUNT	AMOUNT	ACCOUNT	AMOUNT
101-22-3	465 40	136-22-3	305 84
02-22-3	199 41	138-22-3	239 31
109-22-3	1143 58	139-22-3	505 30
14-22-3	465 41	141-22-3	53 19
115-22-3	1263 25	142-22-3	252 65
14-22-3	1675 49	62-001	282 00
<b>TOTAL</b>		<b>TOTAL</b>	<b>6,286 90</b>
ADDS. + TENS.	CODING	O.K. TO PAY	POSTED

per month will be not paid within

*C, K12*

T  
N  
T



# TRANS NORTH TURBO AIR LTD.

BOX 1977 . PHONE 668-2177  
WHITEHORSE, YUKON



RECEIVED  
SEP 13 1970

TO: Atlas Explorations Ltd.  
330 Marine Building  
355 Burrard Street  
VANCOUVER 1, B.C.

DATE August 31, 1970

INVOICE NO. 607-70

P.O. NO.

TO: Charge you with the charter of Bell 47G-3B-1  
Helicopter CF-VUE  
Crew: Plaster and Engst

FLYING: August 31, 1970  
Daily Flight Report No. 4854

1.3 hours at \$144.00 per hour \$187.20  
(rate when charterer supplies fuel)

INVOICE TOTAL \$187.20

ACCOUNT		AMOUNT	
138-22-3		57	60
139-22-3		57	60
109-22-3		72	00
TOTAL		187	20
ADDS. + EXTENS.	CODING	O.K. TO PAY	POSTED

PAID

one per cent interest per month will be charged on all invoices not paid within 30 days of date issued.

ATLAS FUEL. 1.3

