

ASSESSMENT REPORTS

060853

MAP No. 95-I-11 TYPE OF WORK: Geochemical Report

REPORT FILED UNDER	CANEX PLACER LTD. - Exploration Division
DATE PERFORMED	June 16-18 and August 1/73 FILED: 3 Dec. 73 1/73
LOCATION - LAT.	62°35'
LONG.	129°29'
CLAIM Nos.	DON 78, 157, 159, 160
WORK DONE BY	B. Ainsworth, M.A., M.A.E.G., P.ENG. [B.C.]
WORK DONE FOR	Canex Placer Ltd., Exploration Division
REMARKS	DON CLAIMS
\$ 1576.00	Zinc shows a high background, with Cd correlating with Zn. Two Zn anomalies with positive lead correlation occur, one on DON 78, one on DON 157.

No reference to rock type, but that Road River prob'y underlies 200 ft. by 50 ft. grid was established by chain and compass. 387 samples were analysed for Pb, Zn and Cd.

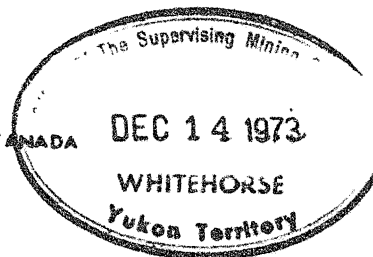
L Taken from "B" horizon - below the ash layer.

CANEX PLACER LIMITED

EXPLORATION DIVISION

700 BARRARD BUILDING

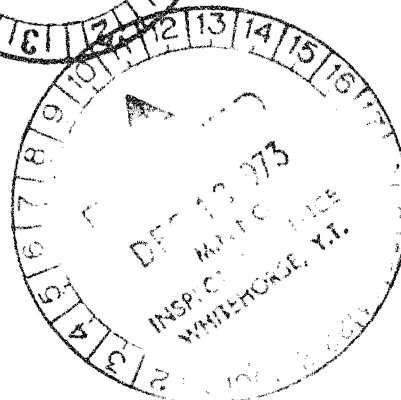
VANCOUVER S. B.C. CANADA



GEOCHEMICAL REPORT



Don Claims - 105-I-11
Pelly River Headwaters, Y.T.
Latitude 62°35' Longitude 129°29'
Work Dates June 16-18 & August 1, 1973



by

B. Ainsworth, M.A., M.A.E.G., P. ENG. (B.C.)

This report has been examined by the Geological Evaluation Unit and is recommended to the Commissioner to be considered as representation work in the amount of \$ 1576

D. B. Craig

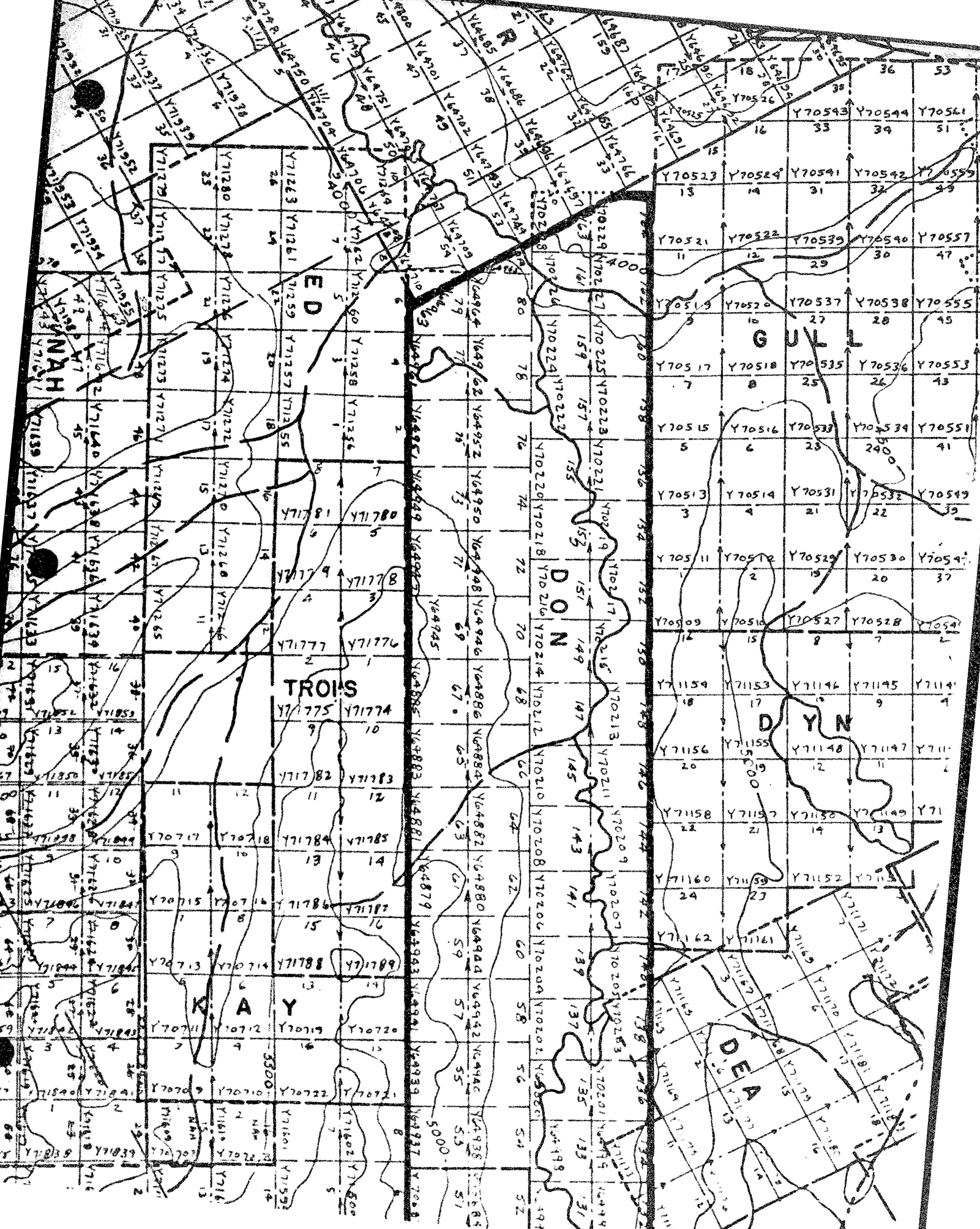
Resident ~~Geologist~~ or
~~Resident Mining Engineer~~

Considered as representation work under Section 53 (4) Yukon Quartz Mining Act.

[Signature]
Commissioner of Yukon Territory

TABLE OF CONTENTS

	<u>Page</u>
Location Maps	
Statement of Expenditures	
Introduction	1
Topography, Climate and Vegetation	1
Surveying	1
Geochemical Survey	1
Sampling Method	1
Assay Method	2
Results and Conclusions	2
Recommendations	3
Statement of Qualifications	
List of Claims	



ED

GULL

DON

TROIS

DYN

KAY

DEA

Y71775 Y71774

Y71782 Y71783

Y71784 Y71785

Y71786 Y71787

Y71788 Y71789

Y70711 Y70712 Y70719 Y70720

Y70722 Y70721

Y71601 Y71602

Y71603 Y71604

Y71780 Y71781

Y71776 Y71777

Y71784 Y71785

Y71786 Y71787

Y71788 Y71789

Y70719 Y70720

Y70722 Y70721

Y71601 Y71602

Y71603 Y71604

Y70217 Y70218

Y70219 Y70220

Y70221 Y70222

Y70223 Y70224

Y70225 Y70226

Y70227 Y70228

Y70229 Y70230

Y70231 Y70232

Y70233 Y70234

Y70527 Y70528

Y70529 Y70530

Y70531 Y70532

Y70533 Y70534

Y70535 Y70536

Y70537 Y70538

Y70539 Y70540

Y70541 Y70542

Y70543 Y70544

Y71148 Y71149

Y71150 Y71151

Y71152 Y71153

Y71154 Y71155

Y71156 Y71157

Y71158 Y71159

Y71160 Y71161

Y71162 Y71163

Y71164 Y71165

Y70547 Y70548

Y70549 Y70550

Y70551 Y70552

Y70553 Y70554

Y70555 Y70556

Y70557 Y70558

Y70559 Y70560

Y70561 Y70562

Y70563 Y70564

3500

5000

N4

S1

N4

S1

N4

S1

COMINCO

NORANDA

VESTOR

DYNASTY

VESTOR

A. Norman

Staked & Staking

PLACER

METALLIC MIN.

Staked

Staked & Staking

PLACER

VESTOR

NORTHWEST TERRITORIES
YUKON TERRITORY

DYNASTY

Staked

Staking

A. Eskin

A. Norman

VESTOR

PLACER

BLAVIERE WITH SYND.

NORANDA

Staked

PLACER

NORANDA

BLAVIERE WITH SYND.

DYNASTY

Staked & Staking

NORANDA

PLACER

Staked & Staking

Staked & Staking

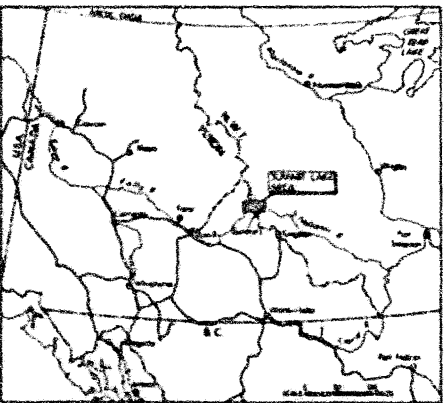
VESTOR

Staked & Staking

Summit Lake Strata

AREA OF DON CLAIMS
GEOCHEMICAL SURVEY

PROPERTY MAP
SUMMIT LAKE AREA
Yukon Territory - Northwest Territories
SCALE 0 1 2 3
KILOMETERS
December 1977



62°30'

INTRODUCTION

A geochemical soil survey was carried out between June 16-18, 1973 and a further day on August 1, 1973 on the Don claims, Claim Nos. 78, 157, 159 and 160. Soil sampling was carried out by a two man crew camped close to the claims, using a helicopter for transportation. Three hundred and eighty-seven soil samples were collected and sent to the Canex Placer geochemical laboratory in Vancouver for analysis for lead, zinc, and cadmium. The geochemical anomalies indicated by this survey will be subject to further work.

TOPOGRAPHY, VEGETATION AND CLIMATE

The Don claims cover the valley of Don Creek, a tributary of the Pelly River. The area sampled was restricted to that part of the valley where overburden was thinnest. Eskers and other retreating glacial features preclude the possibility of useful geochemical work in a large part of this valley. No marketable timber occurs within the area surveyed which is covered by buck brush willow and scrub balsam. The area has relatively high precipitation and endures a typical central Yukon range of temperatures resulting in frost heaving of soils and rocks.

SURVEYING

The grid lines for the soil sample survey were established by a chain and compass survey. A grid of 200' x 50' was established and tied in to the claim posts of the claims covered by the soil sample survey.

GEOCHEMICAL SURVEY

Sampling Method

Where possible, samples were taken in the "B" horizon, a pale rusty horizon ranging from 8" to 16" in depth in the area sampled. An ash layer occurred and all samples were collected below this ash layer. Where

swamps occurred, samples were not taken.

Assay Methods

Samples were dried in a hot air drier at about 120°F, and then the -80 mesh fraction was sieved for analysis. Portions of the -80 mesh fraction were digested in a hydrochloric and perchloric acid mixture. Aliquots of the digested sample were analyzed on a Perkin Elmer 403 Atomic Absorption spectrophotometer. Wavelengths used were:

zinc	2139 Å
lead	2170 Å
cadmium	2288 Å.

A background of correction was made for cadmium using an adjacent non-absorbing wavelength.

RESULTS AND CONCLUSIONS

Analyses for Zn, Pb and Cd are plotted separately on the three 400 scale maps in the back pocket. The distribution of metal values is quite erratic so use has been made of metal-value related colours at each sample site rather than contours.

Zinc values demonstrate a high background in the range of 250 - 500 ppm. This is typical of values encountered in non-mineralized sections of the Road River formation that probably underlies the area sampled. Two anomalous areas are indicated but it is not possible to indicate any trends owing to the incomplete sample coverage. On line 2+00E between stations 5S and 10S on the Don 157 mineral claim, there is a distinct but small zinc anomaly in the 1,000 - 2,000 ppm range. This anomaly is reflected on line 00. Line 00 on the Don 78 mineral claim shows a similar tenor anomaly between stations 00 and 5N.

Cadmium shows a strong correlation with the zinc distribution, reflecting the similar mobilities of the two elements. Background values are in the 0.4 ppm to 4 ppm range and in the area of the anomalous zinc values, cadmium occurs in the 6 - 12 ppm range.

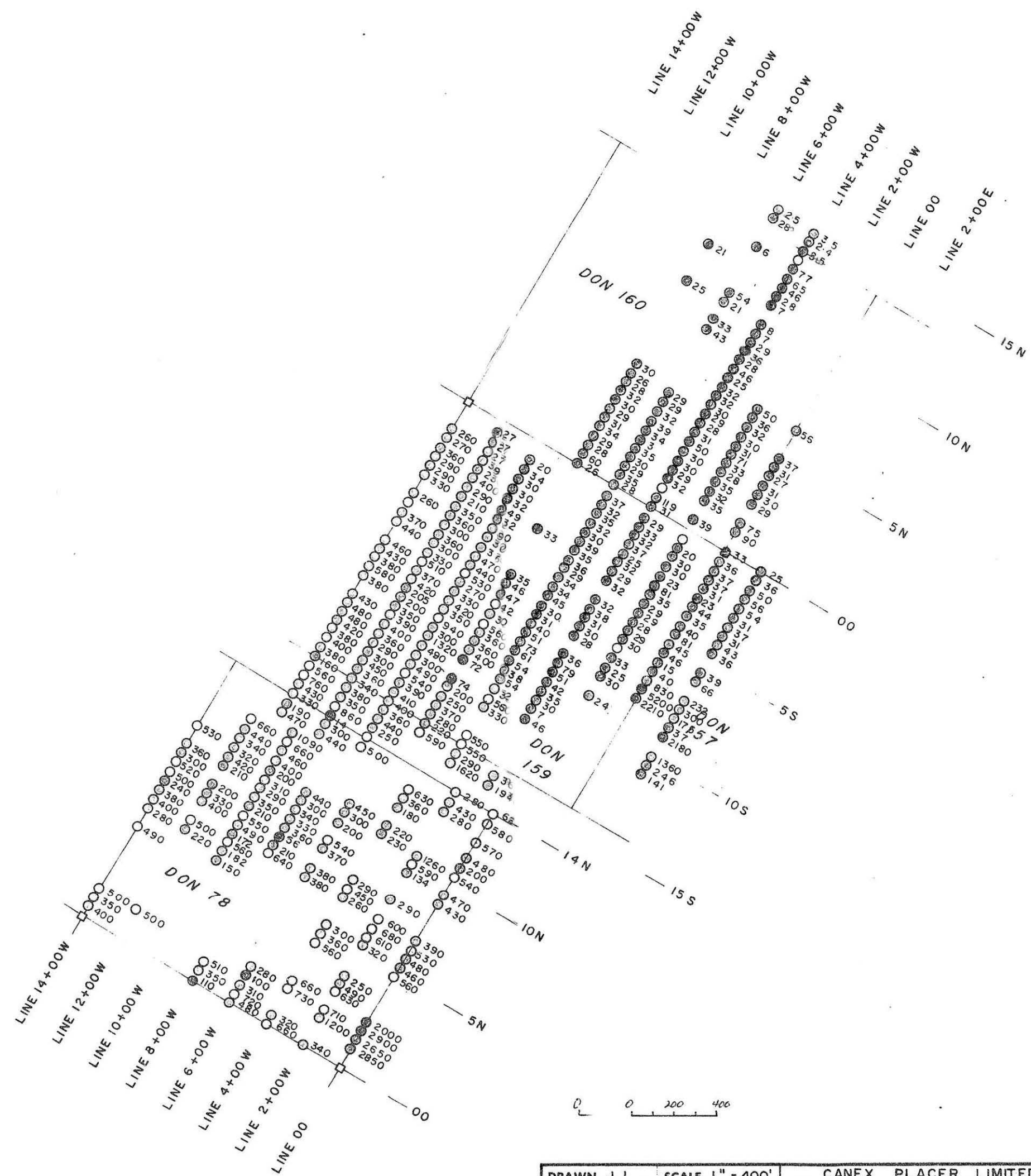
Lead correlates well with the zinc anomaly on the Don 157 mineral claim but not with the anomaly on the Don 78 mineral claim. This suggests that the latter may be hydromorphic.

RECOMMENDATIONS

The anomalous area on the Don 157 should be trenched to bedrock to establish what correlation exists between the bedrock and soil chemistry.

LIST OF CLAIMS

<u>CLAIM NAME</u>	<u>GRANT NO.</u>	<u>REGISTRY DATE</u>	<u>EXPIRY DATE</u>
DON 78	Y64962	October 6/72	1974
157	Y70222	October 6/72	1974
159	Y70224	October 6/72	1974
160	Y70225	October 6/72	1974



ppm Zn

2000+
1000-2000
500-1000
250-500
100-250
0-100

DRAWN J. L.	SCALE 1" = 400'	CANEX PLACER LIMITED
TRACED	DATE NOV. 1973.	DON GRID
APPROVED		

SOIL SAMPLE GRID
FILE No. V-140