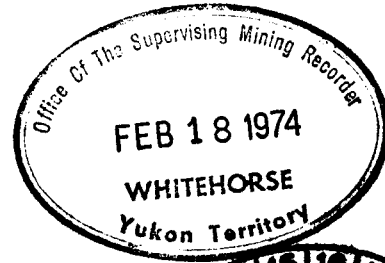


GEOCHEMICAL SURVEY
FOR
BLACK GIANT MINES LTD. (N.P.L.)
ON
THE SUM 1 - 36 CLAIM GROUP

Watson Lake, Yukon Territory and
Nahanni, Northwest Territories Mining Division

Latitude 62 Degrees 26 Minutes North
Longitude 129 Degrees 16 Minutes West

CLAIM MAP 105 I - 6



BY

Robert W. Nusbaum

Geologist

\$ 3835.98

January 29th, 1974

This report has been examined by the Geological Evaluation Unit and is recommended to the Commissioner to be considered as representation work in the amount of \$ 3835.98

Resident Geologist or
Resident Mining Engineer

Considered as representation work under Section 53 (4) Yukon Quartz Mining Act.

Commissioner of Yukon Territory



TABLE OF CONTENTS

INTRODUCTION	Page I
CONCLUSIONS	Page I
RECOMMENDATIONS	Page I
PERSONNEL	Page II
PROPERTY	Page II
LOCATION & ACCESS	Page II
TOPOGRAPHY	Page II
SOIL SAMPLING PROGRAM	Page III
SURVEY RESULTS	Page III & IV
APPENDIX	Rear
LOCATION MAP	Rear
CLAIM GRID MAP 1 inch to 2,000 feet	Rear
CERTIFICATE	Rear
GEOCHEMICAL MAP 1 inch to 500 feet	Pocket
CLAIM MAP 1 inch to 1,000 feet	Pocket

GEOCHEMICAL SURVEY
FOR
BLACK GIANT MINES LTD. (N.P.L.)
ON
THE SUM 1 - 36 CLAIM GROUP
Watson Lake, Yukon Territory and
Nahanni, Northwest Territories Mining Division

Introduction

Black Giant Mines Ltd. (N.P.L.) acquired the SUM claim group in February, 1973, and upon recommendation in a Geological Report on the Property by J.D. Poliquin, P. Eng., a geochemical survey was conducted on the claim group by Newcastle Explorations, Vancouver, B.C. in August, 1973. The results of the geochemical survey were plotted, contoured, and evaluated by the author of this Report in December 1973.

Conclusions

The geochemical survey outlined six small areas 400 to 800 feet long, containing anomalous values ranging from 400 to 1,750 parts per million zinc. These areas are located along the flanks of an east-west trending ridge, and are probably caused by the surrounding shale host rock, which normally contains high background values of zinc.

Recommendations

Although not of major significance, if crews were working in the area the anomalies are interesting enough to warrant follow-up work of a limited amount of prospecting and detailed geochemical soil sampling to try to determine the source of the high zinc values. Otherwise, no further work is recommended on the SUM claim group.

Personnel

NEWCASTLE EXPLORATION'S SURVEY CREW

Larry Sostad	Vancouver, B.C.
Garry Baker	Vancouver, B.C.
Jack Bradley	Vancouver, B.C.
David Munns	Vancouver, B.C.

Property

The Property consists of 36 claims recorded on February 2nd, 1973, claim map 105 I - 6. The following are a list of the claims and their grant numbers.

<u>Name of Claim</u>	<u>Mining District</u>	<u>Grant Numbers</u>
SUM 1 - 20	Nahanni, N.W.T.	Y 37901 - T 37920
SUM 21 - 36	Watson Lake, N.W.T.	Y 72284 - Y 72299

Location & Access

The Property is located about 4 miles northeast of Summit Lake on the border between Yukon Territory and Northwest Territories, latitude 62 degrees 24 minutes north; longitude 129 degrees 16 minutes west, Claim Map 105 I - 6, in the Watson Lake Mining Division, Yukon Territory and the Nahanni Mining Division, Northwest Territories.

Access to the Property is by fixed wing aircraft, to Summit Lake then by helicopter four miles to the Property, or, by helicopter directly to the Property from Ross River or Watson Lake.

Topography

The claims are situated above treeline between elevations of 4,500 and 5,500 feet. The northern part of the SUM claim group is a flat and hummocky, while the southwestern area is steep.

Soil Sampling Program

Three baselines were cut and measured, and a grid pattern was layed out on the claim group with lines at 400 feet spacings, and stations at 200 feet intervals. Soil samples were collected from the top of the "B" soil horizon with a hand auger. The samples were packaged in manilla envelopes, code-marked with a number for identification, and sent to Loring Laboratory, Calgary, Alberta for lead-zinc analysis. The samples were screened to minus 80 mesh, digested in aqua regia, and analysed for lead and zinc using the Atomic Absorption Method.

Survey Results

Approximately 850 sample results for lead-zinc analysis were received and plotted on maps at a scale of 1 inch to 500 feet for contouring and interpretation.

A statistical analysis of the results shows an average background of 14 parts per million in lead. Only one lead value was found which falls in the anomalous category, that is three time background, in this case 42 parts per million. This value was 58 parts per million lead, and located at grid co-ordinates 00W 2N, Grid T - 1. No significance is placed on this one anomalous lead value.

Average background zinc values are 141 parts per million with values of 423 parts per million falling into the anomalous category,(i.e. three times background).

Contouring the geochemical results of samples with values greater than 400 parts per million zinc outlined six small areas containing three or more anomalous zinc values. These areas are generally oval shaped with the long axis, 400 to 800 feet long, oriented in an east-west direction and the short axis, 200 to 400 feet long, in a north-south direction. These areas with values ranging from 400 to 1,750 parts per million zinc occur mainly along the flanks of a high shale ridge which trends in an east-west direction. The anomalous sample results are probably caused by the surrounding shale host

rock which normally contains high background values of zinc.

Although not of major significance, if crews were working in the area the anomalies are interesting enough to warrant follow-up work of a limited amount of prospecting, and detailed geochemical soil sampling to try to determine the source of the high zinc values. Otherwise no further work is recommended on the SUM claim group.

Vancouver, B.C.
January 29th, 1974

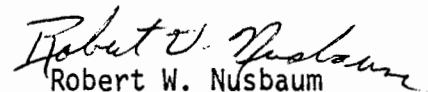
Robert W. Nusbaum
Robert W. Nusbaum
Geologist

CERTIFICATE OF QUALIFICATIONS

I, Robert W. Nusbaum, do hereby certify that:

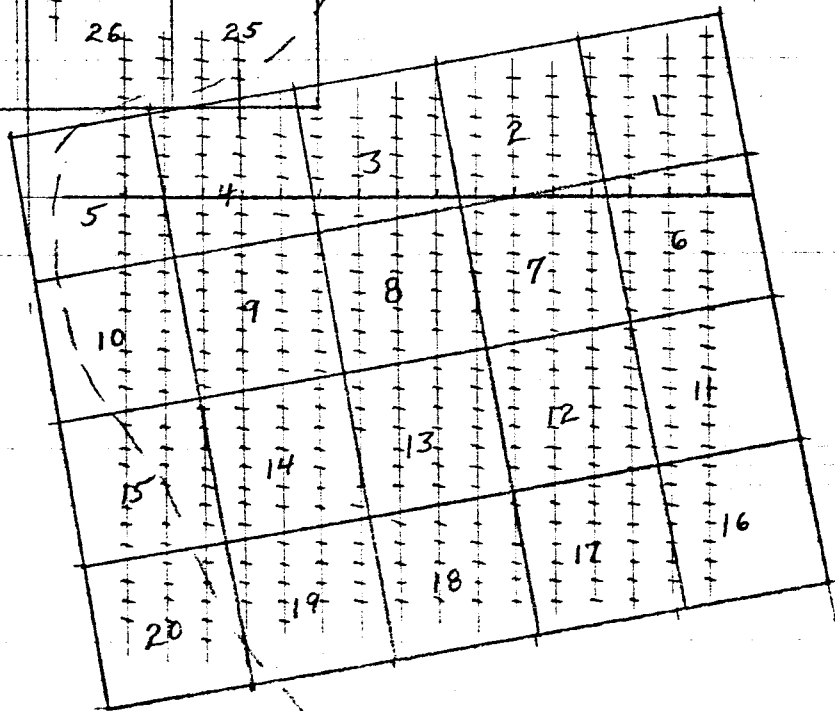
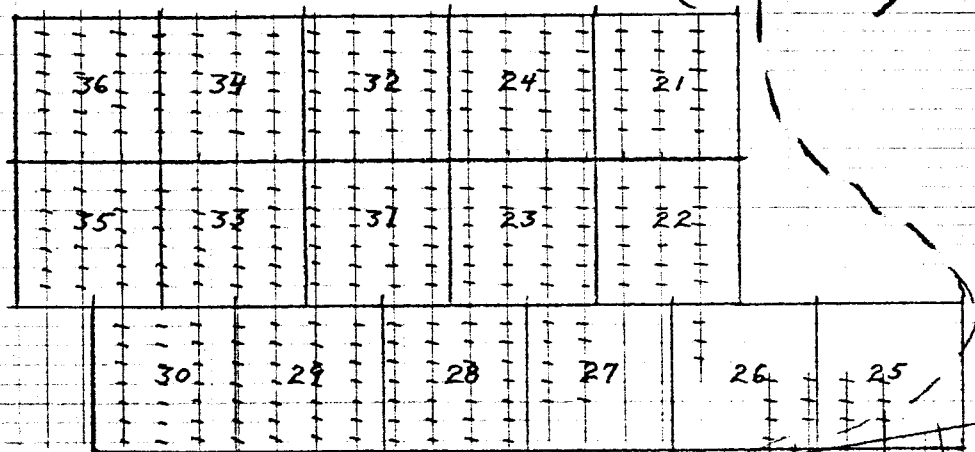
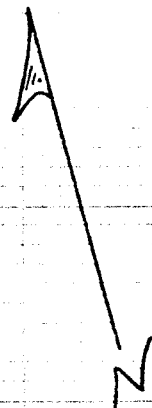
1. I am a practising Consulting Geologist with residence at 660 Chatsworth Road, Richmond, B.C.
2. I am a graduate of the University of Idaho with a Bachelor of Science Degree in Geology.
3. I have been practising my profession since 1959.
4. The accompanying Report is based on analytical data received from Loring Laboratory, Calgary, Alberta; information from a Geological Report on the Property by J.D. Poliquin, P.Eng., and information from the contractor Newcastle Explorations, Vancouver, B.C.
5. I have no interest in the Property nor in the securities of Black Giant Mines Ltd. (N.P.L.), nor do I expect to receive any.

Vancouver, B.C.
January 22nd, 1974


Robert W. Nusbaum
Geologist

Y.T. / N.W.T.

(Approximate
Location)

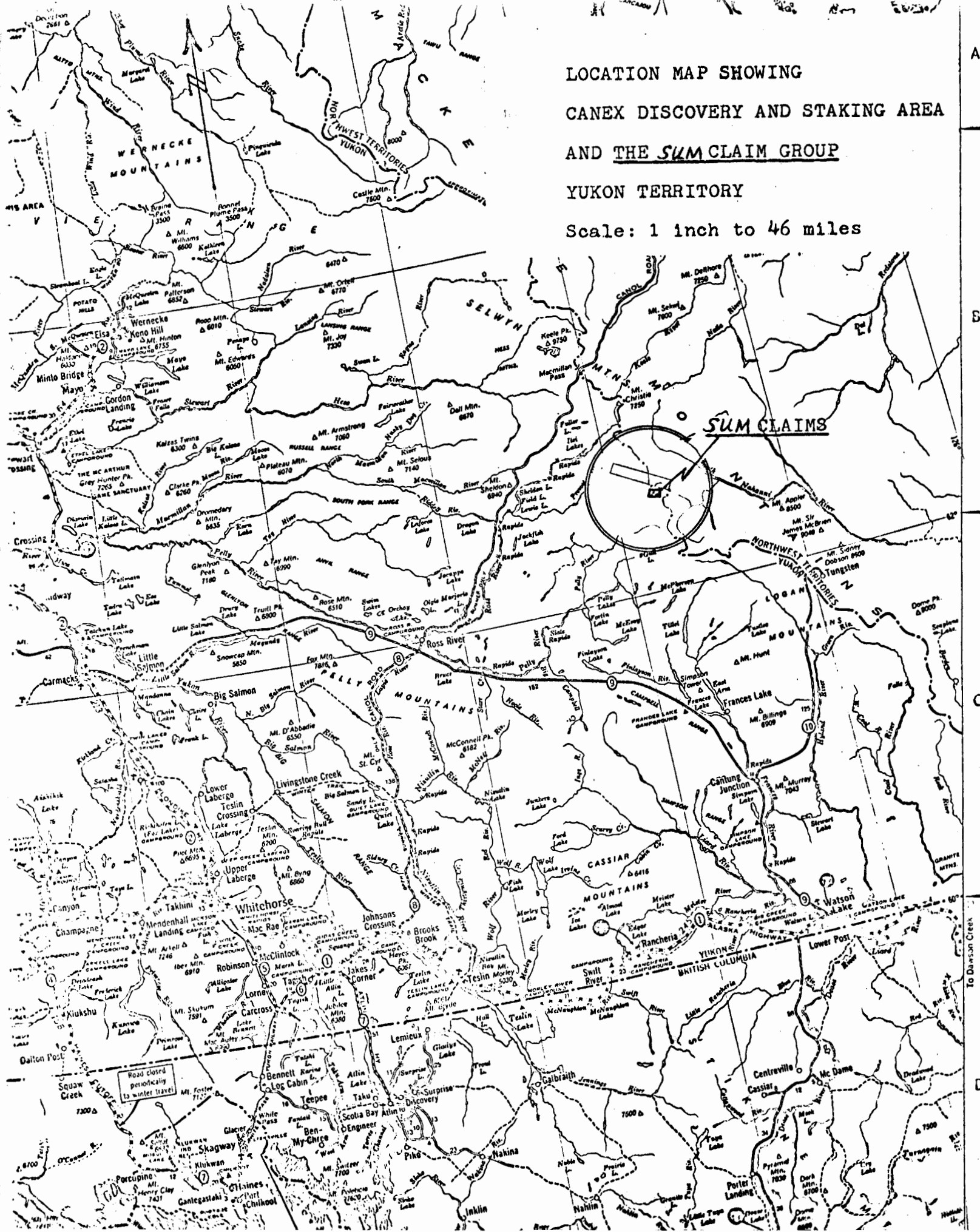


Geochemical Survey
SUM Claims 1-36
for
Black Giant Mines Ltd.
Claim Map 105 I-6
December, 1973 R.W.N.
400' line spacings, 200' Station intervals
Scale 1" to 2,000'

2000 1000 0 2000 4000

LOCATION MAP SHOWING
CANEX DISCOVERY AND STAKING AREA
AND THE SUM CLAIM GROUP
YUKON TERRITORY

Scale: 1 inch to 46 miles



SUM CLAIMS

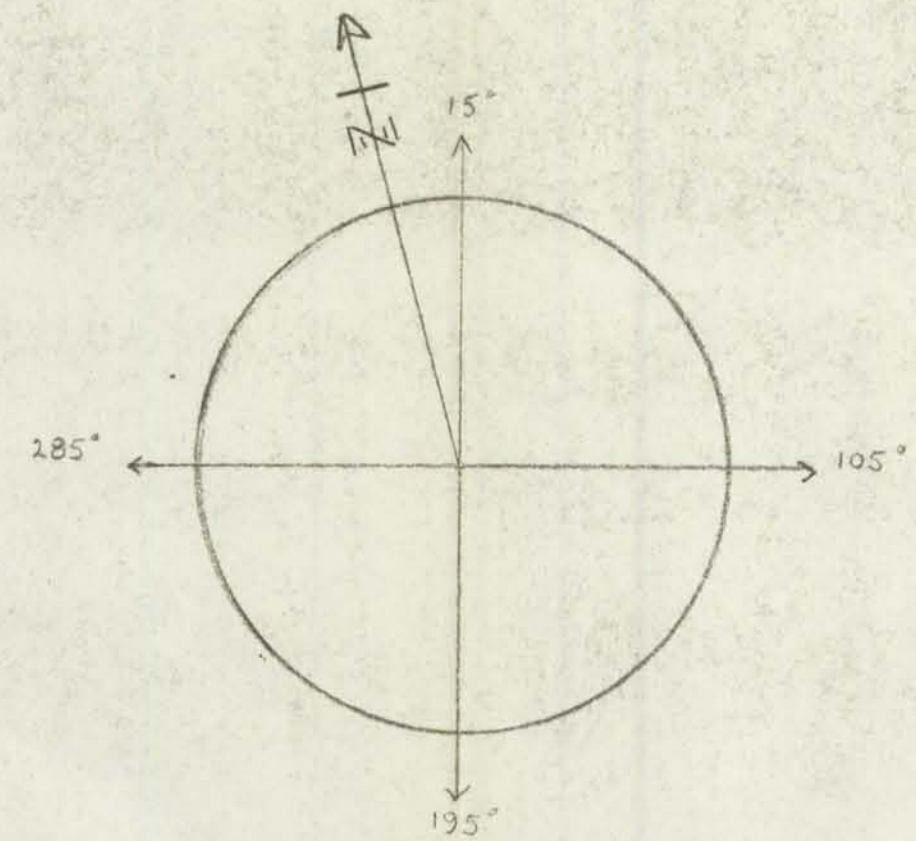
Road closed periodically to winter travel

SUM #1-36 CLAIMS

CLAIM SURVEY for

Black Giant Mines Ltd.

Y.T. N.W.T.



LRWS

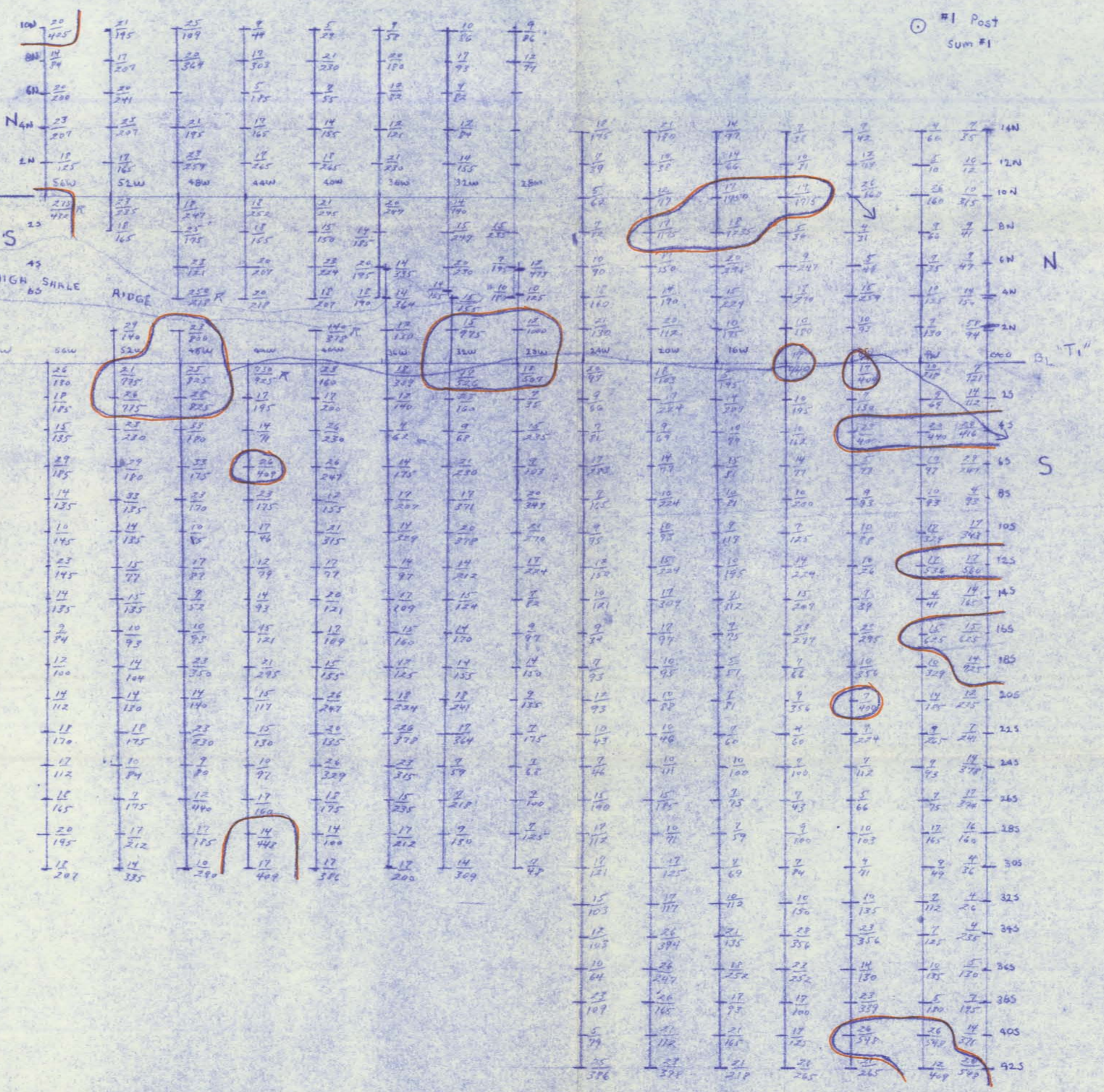
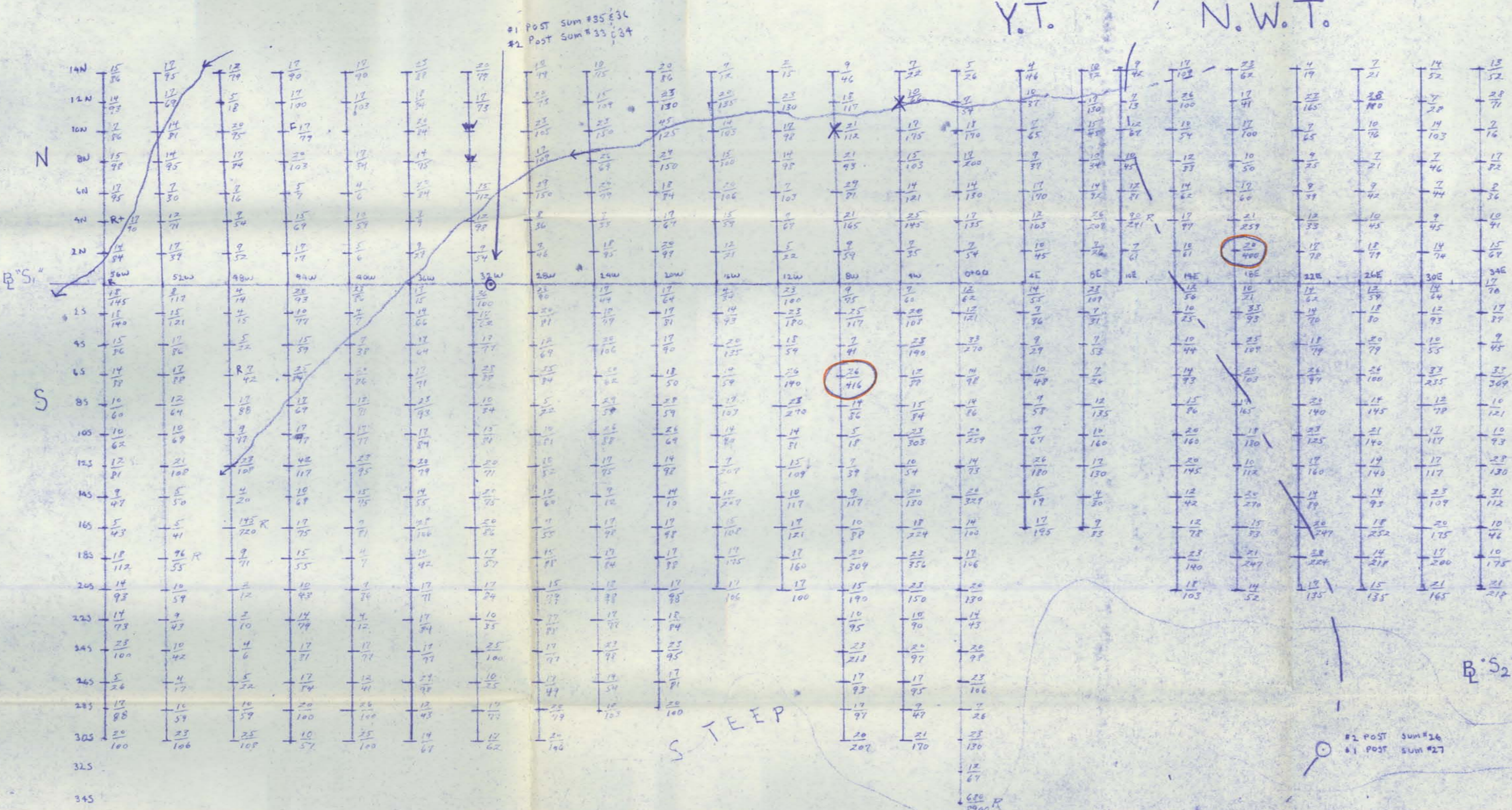
SCALE 1 inch = 1000 feet.

Y.T. N.W.T.

GEO-CHEMICAL SURVEY

SUM # 1-36 MINERAL CLAIMS

Black Giant Mines Ltd. (N.P.L.)



Values in parts per million $\frac{Pb}{Zn}$
 Average Background 14 ppm lead
 Average Background 141 ppm zinc
 Contours Outline Values
 Greater Than 400 ppm Zn...

LEGEND

- CLAIM POST - - - - - ○
- PERMANENT - - - - - F
- SWAMP - - - - - W
- SAMPLE MISSING - - - - - X
- ROCK SAMPLE - - - - - R

Values plotted, contoured & evaluated by R.W. Nusbaum

L.R.W.S.

Claim Map 105 I-6
 SCALE - 1 inch = 500 ft.