



GEOCHEMICAL SURVEY
 FOR
 Tay River Mines Ltd. (N.P.L.)
 ON
 THE NAT CLAIM GROUP
 Watson Lake Mining Division
 Claim Sheet 105 I - 12
 Lat 62 degrees 44 minutes N.
 Long. 129 degrees 55 minutes W.



BY
 ROBERT W. NUSBAUM
 Geologist

July 5th, 1973 - December 18th, 1973

This report has been examined by the Geological Evaluation Unit and is recommended to the Commissioner to be considered as representation work in the amount of \$ 8157.00 8100.00 ABC

[Signature]
 Resident Geologist or
 Resident Mining Engineer

Considered as representation work under Section 53 (4) Yukon Quartz Mining Act.

[Signature]
 Commissioner of Yukon Territory

8157.00



TABLE OF CONTENTS

Introduction	Page I
Conclusions	Page I
Recommendations	Page I
Personnel	Page II
Property	Page II
Location & Access	Page II
Soil Sampling Program	Page II
Survey Results	Page II
Appendixes	Page III
Certificate	Page IV
Location Map	Rear
Claim Map	Rear
Claim Grid Map	Rear
Geochemical Map	Pocket

GEOCHEMICAL SURVEY
TAY RIVER MINES LTD. (N.P.L.)
ON
THE NAT CLAIM GROUP
WATSON LAKE MINING DIVISION, YUKON TERRITORY

INTRODUCTION

Tay River Mines acquired the NAT claim group in the Spring of 1973, and received a report on the exploration potential of the property from J.D. Poliquin, P. Eng., which recommended a geochemical survey. The survey was conducted by Newcastle Explorations, Vancouver, British Columbia., between July 5th, and July 20th, 1973.

CONCLUSIONS

The widely scattered anomalous lead values are of little significance and do not constitute a strong anomalous setting for the presence of possible lead sulfide mineralization.

The two long narrow areas containing anomalous zinc values are of a small order of magnitude and are commonly found in areas with shale host rock, such as this which normally contains anomalously high background values of zinc but not necessarily significant zinc sulfide mineralization.

RECOMMENDATIONS

If crews were working in the area a limited amount of detailed geochemical follow up work on each of the zinc anomalies plus some prospecting in the general area would be warranted to try to determine the source of the high zinc values, otherwise not further work is recommended.

PERSONNEL

NEWCASTLE EXPLORATION'S SURVEY CREW:

LARRY SOSTAD
GARRY BAKER
JACK BRADLEY
DAVID MUNNS

VANCOUVER, B. C.
VANCOUVER, B. C.
VANCOUVER, B. C.
VANCOUVER, B. C.

PROPERTY

The property consists of 72 claims recorded on December 18th, 1972, and 9 fractions recorded on September 28th, 1973, claim map 105 I - 12. The following is a list of the claims with their grant numbers.

NAT 1 - 72	Y 71183 - Y 71254
NAT 73 - 81 fr.	Y 74328 - Y 74336

LOCATION AND ACCESS

The property is located on the headwaters of the Provost River, 30 miles northeast of Summit Lake. Watson Lake Mining Division, Yukon Territory. Claim Map 105 I - 12. Lat 62 degrees 44' N., Long 129 degrees, 55' W. Access is fixed wing aircraft to Summit Lake then by helicopter to the property, or by helicopter from Ross River.

SOIL SAMPLING PROGRAM

Four baselines were cut and measured and a grid pattern was laid out on the claim group with lines at 400' spacings and stations at 200' intervals. Soil samples were collected from the top of the "B" soil horizon using a hand auger. The samples were packaged in manilla envelopes, code-marked for identification and sent to Loring Laboratory, Calgary, Alberta for analysis. The samples were screened to minus 80 mesh, digested in aqua regia, and analysed for lead and zinc using the Atomic Absorption method.

SAMPLE RESULTS

Approximately 1600 sample results for lead-zinc analysis were received and plotted on maps on a scale of 1" to 500' for contouring and interpretation. A statistical analysis of the results of these samples shows an average background of 16 parts per million in lead. Nine lead values were found which fall into the anomalous category, that is three-times background, in this case 48 parts per million. These range from 48 to 390 parts per million and do not fall into an anomalous population group but are widely scattered over the grid pattern.

SAMPLES RESULTS

Average background zinc values are 171 parts per million with anomalous values of three - times background in this case, 513 parts per million. Contouring of the values over 500 parts per million outlines a long narrow area trending east-west for 1200 feet, containing 4 anomalous samples with values ranging from 536 to 3600 parts per million zinc in the northwest part of the claim group with grid coordinates : 36W 4S, 32W 4S, 28W 2S, and 24W 2S, grid III.

A long, narrow area trending east-west for 1200 feet containing 4 anomalous samples with values ranging from 526 to 1975 parts per million zinc was outlined on the south central part of the claim group with grid coordinates: 56E 4N, 60E 4N, 64E 6N, and 68E 6N, grid I.

Twenty-five one-samples or two-sample anomalies with values ranging from 516 to 2080 parts per million zinc were outlined widely scattered over the entire grid area.

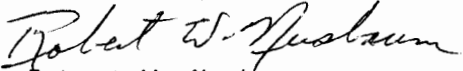
None of the lead or zinc values are coincident.

Robert W. Gustavson

CERTIFICATE OF QUALIFICATIONS

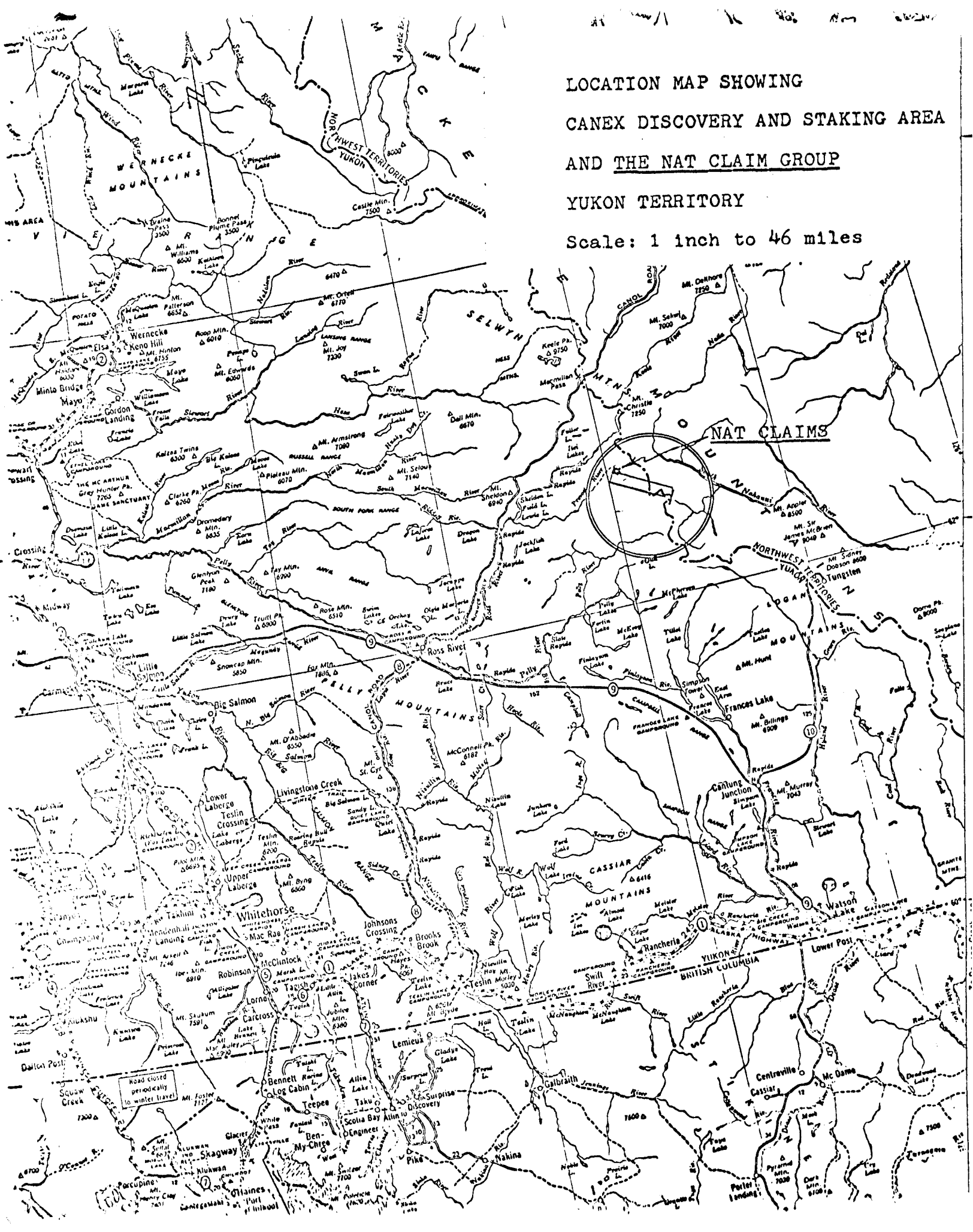
1. I am a practising Consulting Geologist with residence at 660 Chatsworth Road, Richmond, British Columbia.
2. I am a graduate of the University of Idaho with a Bachelor of Science Degree in Geology.
3. I have been practising my profession since 1959.
4. The accompanying report is based on analytical data received from Loring Laboratory, Calgary, Alberta, information from a Report on the property by J.D. Poliquin, and information received from the contractor Newcastle Explorations.
5. I have no interest in the property, nor in the securities of Tay River Mines Ltd. (N.P.L.), nor do I expect to receive any.

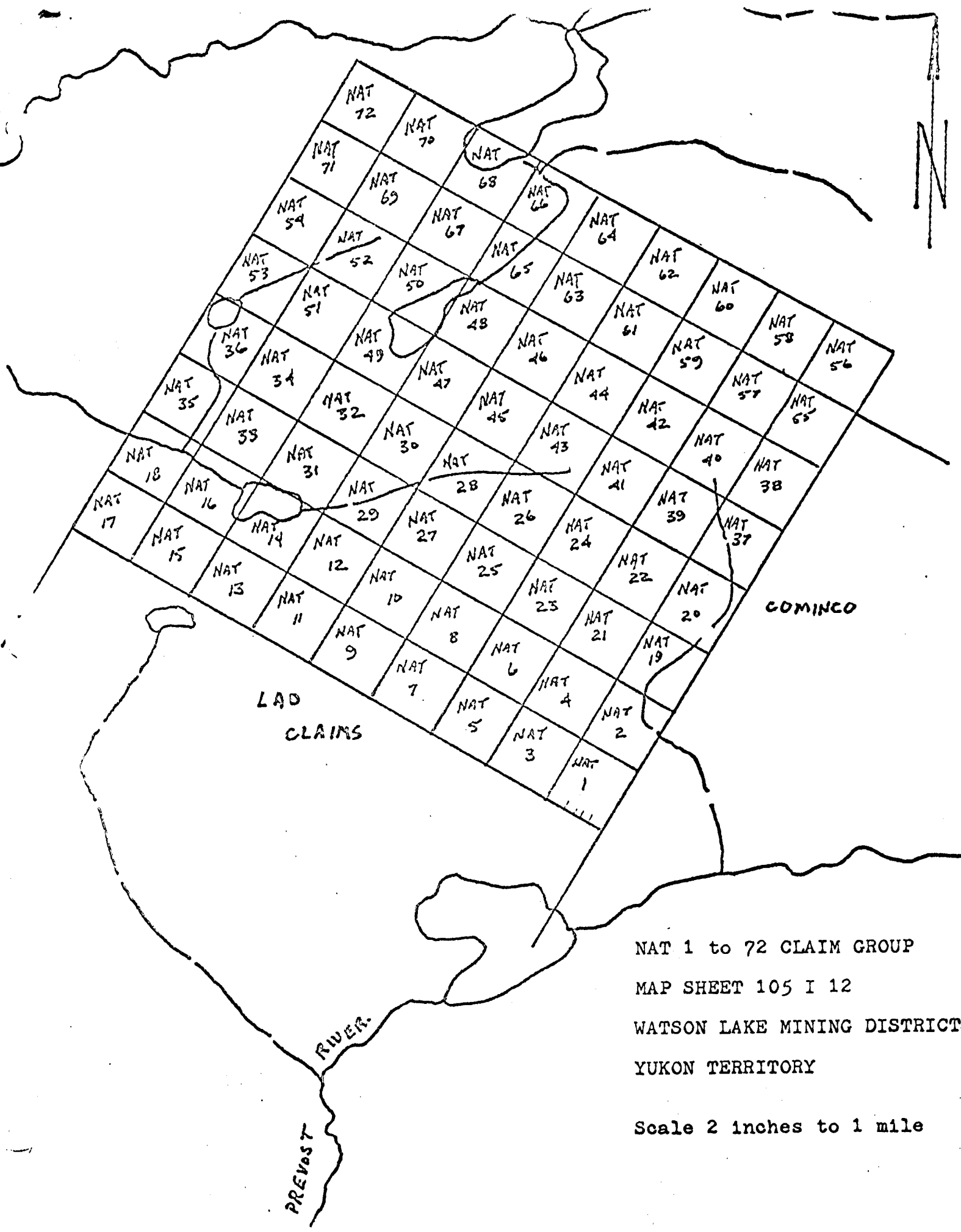
December 27th, 1973
Vancouver, B. C.


Robert W. Nusbaum
Geologist

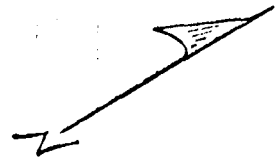
LOCATION MAP SHOWING
CANEX DISCOVERY AND STAKING AREA
AND THE NAT CLAIM GROUP
YUKON TERRITORY

Scale: 1 inch to 46 miles





NAT 1 to 72 CLAIM GROUP
 MAP SHEET 105 I 12
 WATSON LAKE MINING DISTRICT
 YUKON TERRITORY
 Scale 2 inches to 1 mile



17	18	81Fr.	35	36	53	54	71	72
15	16	80Fr.	33	34	51	52	69	70
13	14	79Fr.	31	32	49	50	67	68
11	12	78Fr.	29	30	47	48	65	66
9	10	77Fr.	27	28	45	46	63	64
7	8	76Fr.	25	26	43	44	61	62
5	6	75Fr.	23	24	41	42	59	60
3	4	74Fr.	21	22	39	40	57	58
1	2	73Fr.	19	20	37	38	55	56

Tay River Mines Ltd.
NAT 1-81 Claim Group
Yukon Territory, 105 I-12

Geochem Grid 400' line spacing, 200' stations
Scale 1" to 2000' November, 1973 R.W.N.

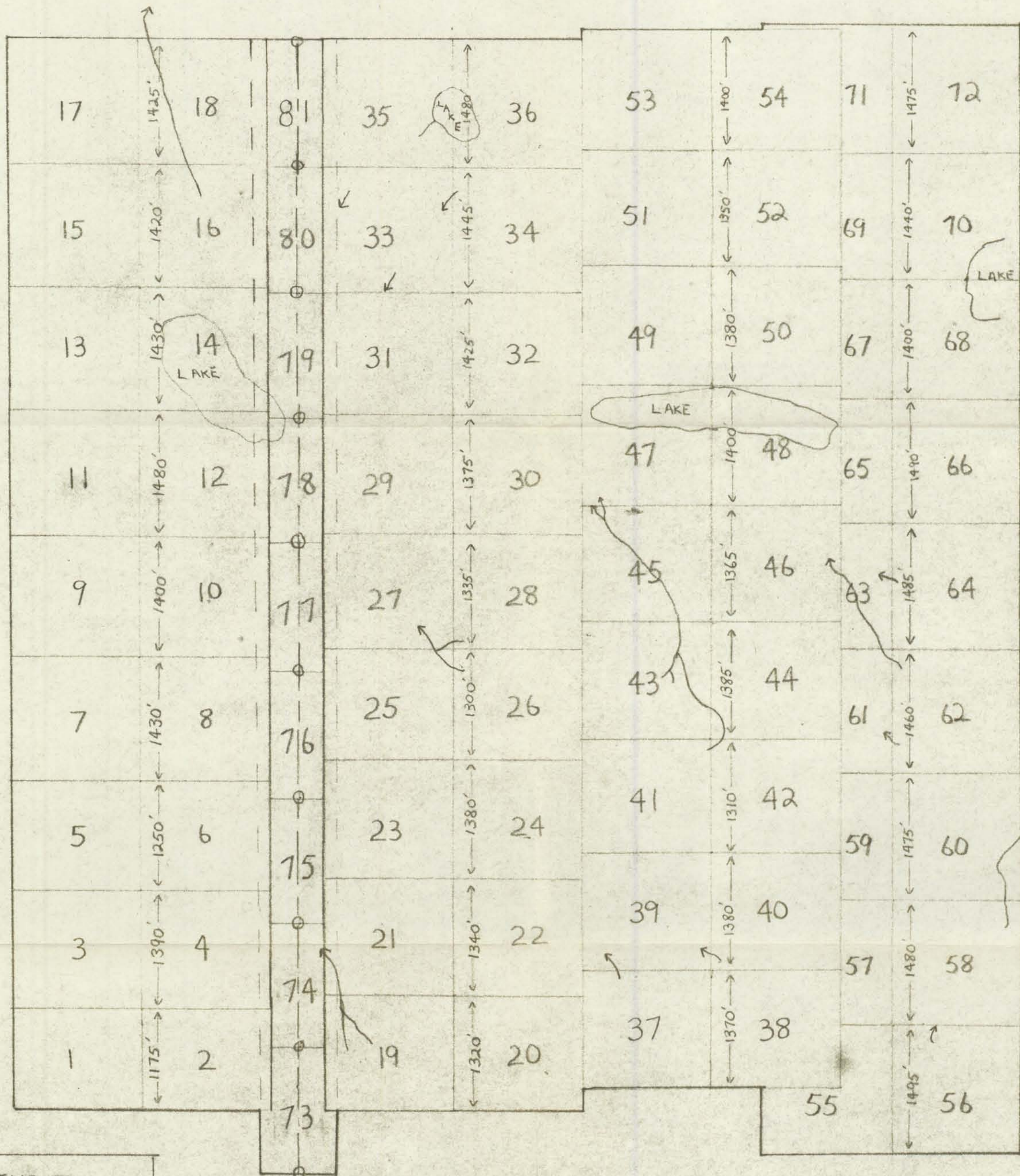
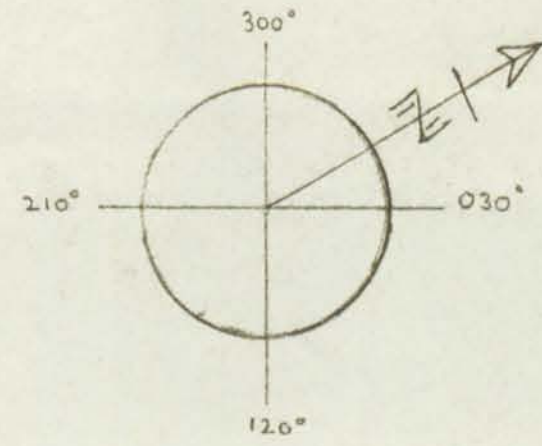
TAY RIVER MINES LTD (N.P.L)

CLAIM SURVEY

NAT # 1-72 &

73-81 Fr.

WATSON LAKE MD



LEGEND

- FRACTIONAL CLAIM POST --- \oplus
- FRACTIONAL CLAIM LINE --- \vdots
- CREEK --- $\text{---} \text{---} \text{---}$

DECLINATION \pm 35°

SCALE 1 inch = 1000 feet

Yours.

NAT # 1-72 MINERAL CLAIMS



LEGEND
 FULL SIZE CLAIM POST — ●
 FRACTIONAL CLAIM POST — ○
 SWAMP — ◌
 PERMA-FROST — P
 SAMPLE MISSING — X
 ROCK SAMPLE — R
 CREEK — —
 Values in ppm — ↑

CLAIM SHEET 105 1-12

Values in ppm $\frac{Pb}{Zn}$

SCALE 1 INCH = 500 FEET

Average Background Values 16 ppm lead
 Average Background Values 171 ppm zinc

Contour Intervals
 Greater than 48 ppm lead — (red dashed circle)
 Greater than 500 ppm zinc — (red solid circle)

Data plotted, compiled & contoured by R.W. Nurbbaum