



GEOCHEMICAL SURVEY

FOR

TAY RIVER MINES LTD. (N.P.L.)

ON

THE NAVAJO CLAIM GROUP

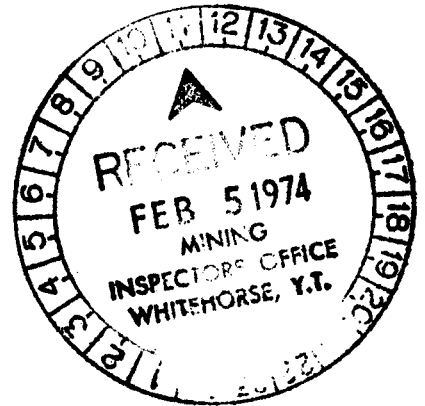
Whitehorse Mining Division

Minto Area, Yukon Territory

Claim Map 115 I - 11

Latitude 62 Degrees 41 Minutes North

Longitude 137 Degrees 15 Minutes West



BY

Robert W. Nusbaum

Geologist



January 21st, 1974

3280.77

This report has been examined by the Geological Evaluation Unit and is recommended to the Commissioner to be considered as representation work in the amount of

\$ 3280.77

[Signature]

Resident Geologist or
Resident Mining Engineer

Considered as representation work under Section 53 of the Yukon Quartz Mining Act.

[Signature]

Commissioner of Yukon Territory

TABLE OF CONTENTS

INTRODUCTION	PAGE I
CONCLUSIONS	PAGE I
RECOMMENDATIONS	PAGE II
PERSONNEL	PAGE II
PROPERTY	PAGE II
LOCATION & ACCESS	PAGE II & III
TOPOGRAPHY	PAGE III
SOIL SAMPLING PROGRAM	PAGE III
SURVEY RESULTS	PAGE III & IV
APPENDIX	REAR
LOCATION MAP 1/2" to 1 mile	REAR
CLAIM GRID MAP 1" to 2,000'	REAR
CERTIFICATE	REAR
GEOCHEMICAL MAP 1" to 500'	POCKET
CLAIM MAP 1" to 1,000'	POCKET

GEOCHEMICAL SURVEY
FOR
TAY RIVER MINES LTD. (N.P.L.)
ON
THE NAVAJO CLAIM GROUP
Whitehorse Mining Division
Minto Area, Yukon Territory

Introduction

The Navajo claim group was acquired by Tay River Mines Ltd. (N.P.L.) in August, 1973. Mr. E.O. Chisholm, P. Eng., wrote a Geological Report on the Property which recommended a Geochemical Survey. Newcastle Explorations, Vancouver, B.C. was contracted to conduct a Geochemical Survey of the claim group which involved cutting and measuring baselines and collecting soil samples on a grid pattern on the claims. The field work was conducted from September 15th, to September 24th, 1973. The geochemical results were plotted, contoured and evaluated by the author of this Report during November, 1973.

Conclusions

The results of the Geochemical Survey indicate that the background value in this area is about 13 parts per million in copper. Contouring of the survey sample results outlines an area in the southern part of the claim group approximately 2,000 feet by 400 feet, trending in a northeasterly direction, containing values ranging from 22 to 51 parts per million copper. Another area in the southeastern part of the claim group, approximately 1,400 feet by 400 feet contains values ranging from 20 to 45 parts per million copper. Several other smaller areas on the claim group contain anomalous geochemical values ranging from 40 to 117 parts per million copper.

Recommendations

Similar geology and close proximity to the recent copper discovery, 2 miles to the south of the Navajo claim group makes these geochemical anomalies very significant and warrant geophysical follow-up work to delineate target areas for drilling.

PERSONNEL

NEWCASTLE EXPLORATION'S SURVEY CREW

Larry Sostad	Vancouver, B.C.
Garry Baker	Vancouver, B.C.
Jack Bradley	Vancouver, B.C.
David Munns	Vancouver, B.C.

Property

The Property consists of twenty-eight claims which form a rectangular block oriented in a northwesterly direction. The claims were recorded on February 9th, 1973 and are located in the Whitehorse Mining Division, Mineral Claim Map 115 I - 11, Yukon Territory. The following is a list of the claims with their Grant Numbers.

<u>NAME OF CLAIM</u>	<u>GRANT NUMBER</u>
Navajo 9 - 16	Y 67891 - Y 67898
Navajo 25 - 32	Y 67907 - Y 67914
Navajo 41 - 48	Y 67923 - Y 67930
Navajo 57 - 60	Y 67939 - Y 67942

Location & Access

The Property is located 15 miles northwest of Minto, an old Indian Village situated on the Yukon River, and about 50 miles northwest of Carmacks, Yukon Territory, at North 62 degrees 41 minutes latitude and West 137 degrees 15 minutes longitude, Whitehorse Mining Division, Mineral Claim Map 115 I - 11, Yukon Territory.

Access is by way of the Alaska Highway, or fixed wing aircraft to the Minto airstrip and then by helicopter to the Property, or by helicopter directly from Carmacks.

Topography

The topography in the area is low rolling hills cut by shallow, intermittent streams with frequent swamps and patches of permafrost.

Soil Sampling Program

Four baselines were cut and measured and a grid pattern was layed out on the claim group with lines at 400 feet spacings and stations at 200 feet intervals. Soil samples were collected from the top of the "B" soil horizon using a hand auger. The samples were packaged in manilla envelopes, code-marked with a number for identification and sent to Loring Laboratory, Calgary, Alberta for copper analysis. The samples were screened to minus 80 mesh, digested in aqua regia ($\text{HClO}_4 + \text{HNO}_3$) and analysed for copper using the Atomic Absorption Method.

Survey Results

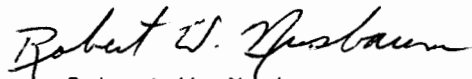
Approximately 700 samples were analysed for copper, and the results of the analysis were plotted on maps on a scale of 1 inch to 500 feet for contouring and evaluation. Statistical analysis indicates that the average background value for the area is about 13 parts per million in copper. Anomalous values are considered to be three times background, in this case 39 parts per million in copper. Ten samples were found to fall in the anomalous category with values ranging from 40 to 117 parts per million copper. These values are found mainly in the southern portion of the claim group surrounded by values ranging from 20 to 35 parts per million copper.

Contouring of the values outlines an area in the claim group approximately 2,000 feet by 400 feet, trending in a north-easterly direction containg values ranging from 22 to 51 parts per

million copper. Another area in the southeastern part of the claim group, approximately 1,400 feet by 400 feet contains values ranging from 20 to 45 parts per million copper. Several other smaller areas on the claim group contain anomalous geochemical values ranging from 40 to 117 parts per million copper.

Similar geology and close proximity to the recent copper discovery 2 miles to the south makes these geochemical anomalies very significant and warrants geophysical follow-up work to better delineate target areas for drilling.

Vancouver, B.C.
January 29th, 1974


Robert W. Nusbaum
Geologist

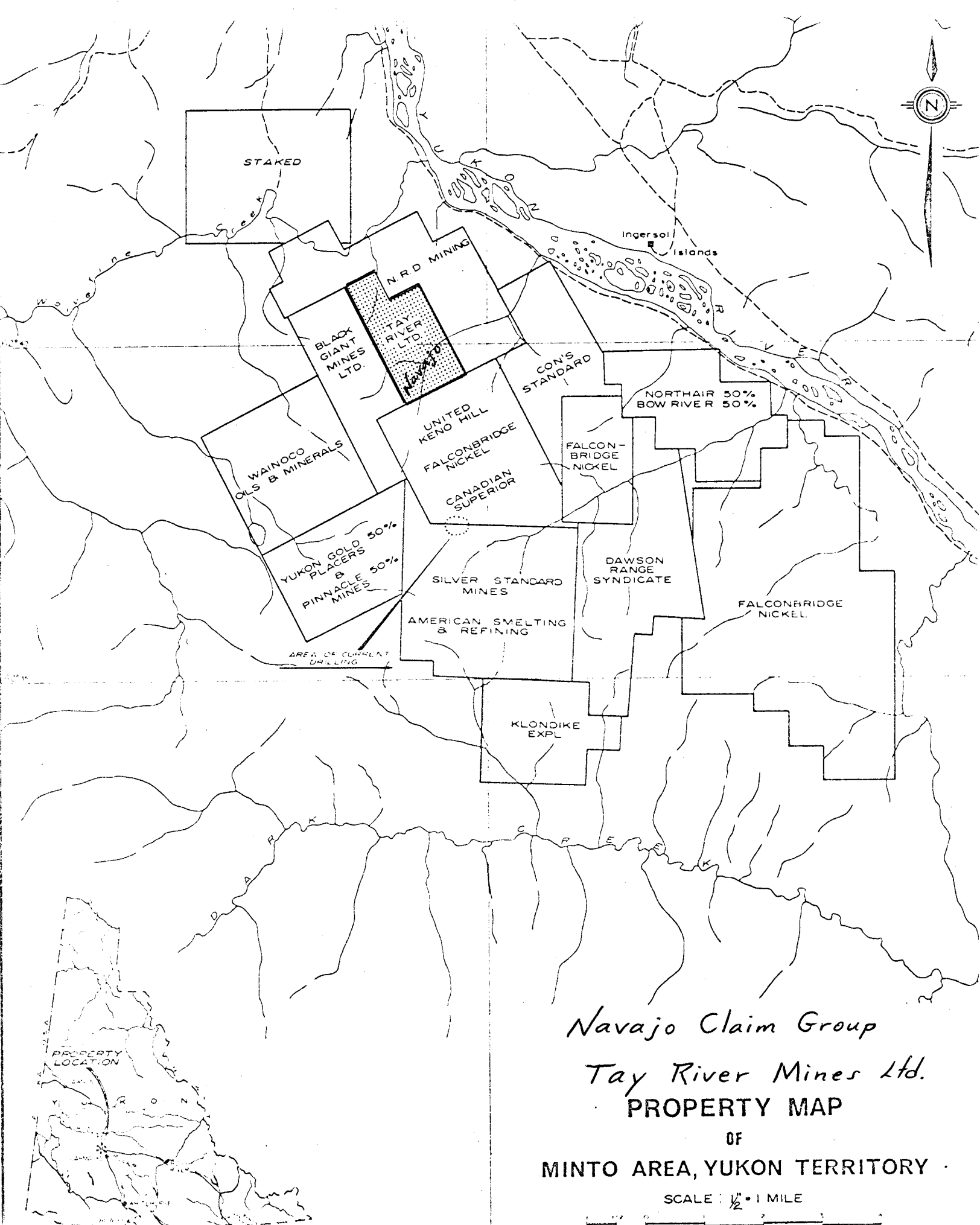
CERTIFICATE OF QUALIFICATIONS

I, Robert Wilson Nusbaum do hereby certify:

1. I am a practising Consulting Geologist with residence at 660 Chatsworth Road, Richmond, B.C.
2. I am a graduate of the University of Idaho with a Bachelor of Science Degree in Geology.
3. I have been practising my profession since 1959.
4. The accompanying Report is based on analytical data received from Loring Laboratory, Calgary, Alberta; information from the Geological Report on the Property by E.O. Chisholm, P. Eng; and information received from the contractor, Newcastle Explorations.
5. I have no interest in the Property, nor in the securities of Tay River Mines Limited (N.P.L.), nor do I expect to receive any.

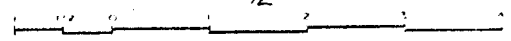
VANCOUVER, B. C.
JANUARY 29TH, 1974

Robert W. Nusbaum
ROBERT W. NUSBAUM
GEOLOGIST

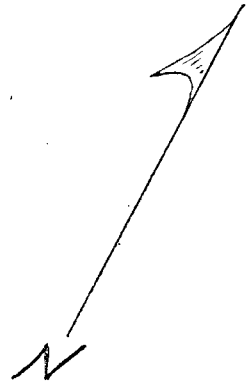


Navajo Claim Group
Tay River Mines Ltd.
PROPERTY MAP
 OF
MINTO AREA, YUKON TERRITORY

SCALE : 1/2" = 1 MILE



57	59		
58	60		
41	43	45	47
42	44	46	48
25	27	29	31
26	28	30	32
9	11	13	15
10	12	14	16



Geochemical Survey Grid.

Tay River Mines Ltd.

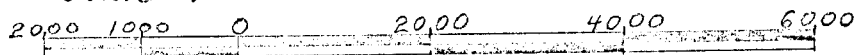
Navajo Claim Group

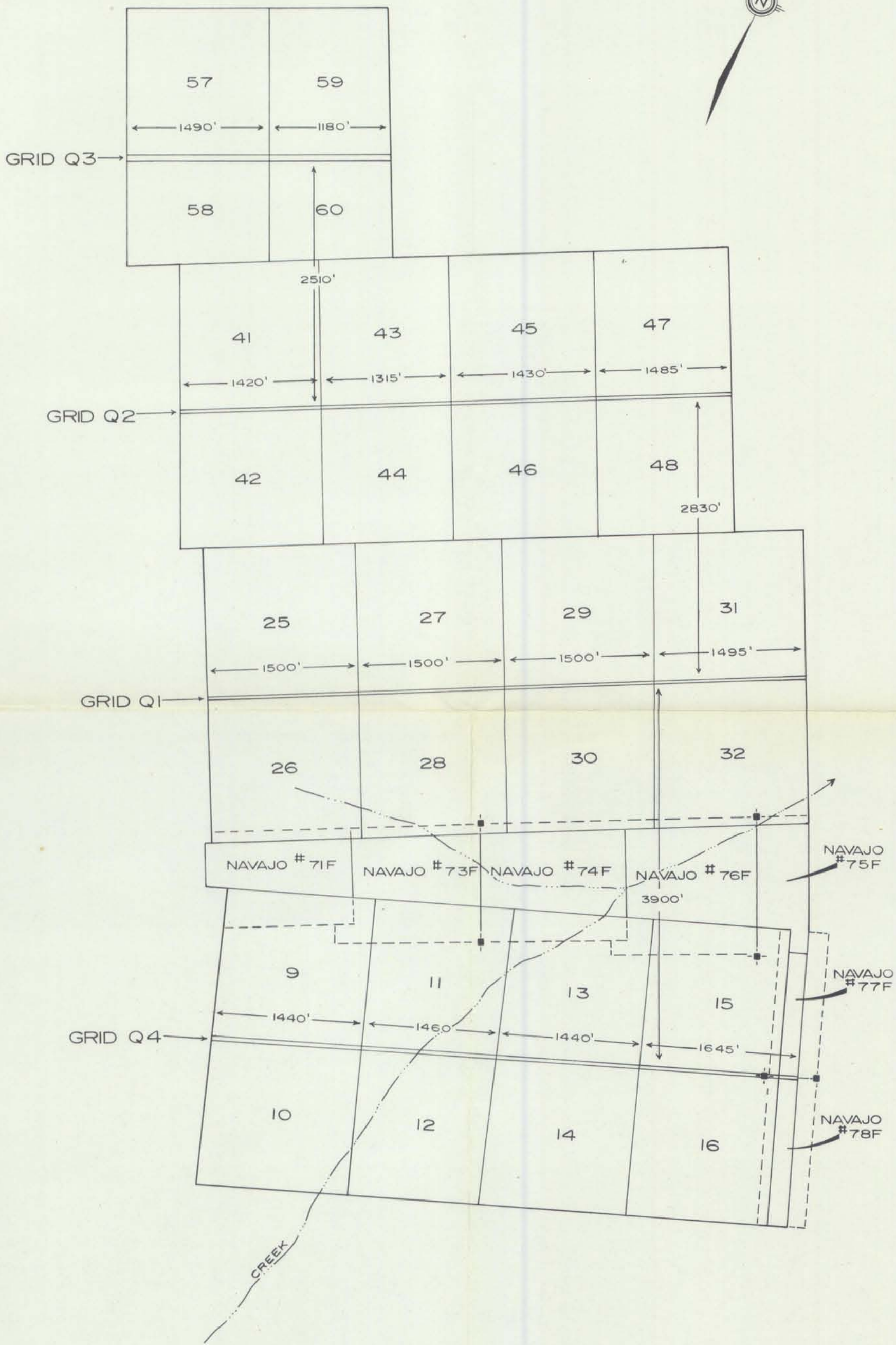
Claim Map 115 I-II Yukon Territory

December, 1973 R.W.N.

400' line spacings, 200' station intervals

Scale 1" to 2000'





TAY RIVER MINES LTD.(N.P.L.)

NAVAJO MINERAL CLAIMS

CLAIM MAP

MINTO AREA YUKON TERRITORY

SCALE
1000' 0 1000'
FEET FEET

