

SUNSET MINING CORPORATION LTD. (N.P.L.)

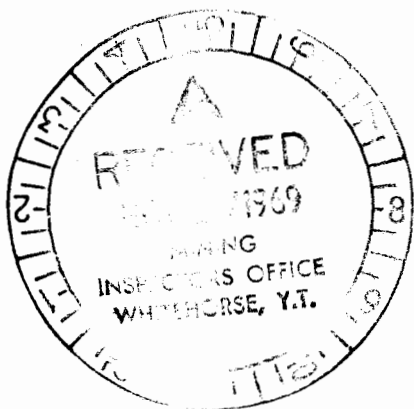
GEOLOGICAL and GEOCHEMICAL REPORT on the

AL - FARGO - KIRK CLAIMS

WHITEHORSE MD., Y.T., 105-K-3

62° 5' North Lat., 133° 5' West Long.

Field-Work: October 1 - 22, 1969.



by

C.E. Zimmerman, Geologist,

P.H. SEVENSMA CONSULTANTS LTD.

and

P.H. Sevensma, Ph.D., P. Eng.

P.H. SEVENSMA CONSULTANTS LTD.

November 8, 1969.

This report has been examined by
the Geological Evaluation Unit.
Approved as to technical worth by:

D. R. Craig
RESIDENT GEOLOGIST

Approved as to cost in the amount
of: \$ 5137.67

R. F. Redden
RESIDENT MINING INSPECTOR

Accepted as representation works
under Section 53(4) Yukon Quartz
Mining Act.

[Signature]
COMMISSIONER OF YUKON

TABLE OF CONTENTS

<u>Part A</u> by C.E. Zimmerman, Geologist		<u>Page No.</u>
1.	INTRODUCTION	1 & 2
2.	WORK OUTLINED ON THE PROPERTY	2 & 3
3.	LOCAL GEOLOGY	3 - 5
4.	ECONOMIC GEOLOGY	5 - 7
5.	GEOCHEMICAL SURVEY	7 - 9
6.	SUMMARY and RECOMMENDATIONS	9 & 10
<u>Part B</u> by P.H. Sevensma, Ph.D., P.Eng.		
1.	SUMMARY	11 & 12
2.	RECOMMENDATIONS	13 & 14

ILLUSTRATIONS

Fig. 1	Geology and Sample Location	1" = 500'
Fig. 2	Soil Sample Location	1" = 500'
Fig. 3	Lead Plot	1" = 500'
Fig. 4	Zinc Plot	1" = 500'
Fig. 5	Silver Plot	1" = 500'
Fig. 6	Geological Section	1" = 100'
Fig. 7	Geology of No. 1 Vein	1" = 40'
Fig. 8	Claim Map	1" = 1/2 mile

SUNSET MINING CORPORATION LTD. (N.P.L.)
GEOLOGICAL and GEOCHEMICAL REPORT on the
AL - FARGO - KIRK CLAIMS
Whitehorse M.D., Y.T., 105-K-3
62° 5' North Lat., 133° 5' West Long.

1. INTRODUCTION

At the request of Sunset Mining Corporation and following the recommendations of P.H. Sevensma, Ph.D., P. Eng., Report of May 2nd, 1969, a geological mapping and a geochemical survey was carried out on the Al - Fargo - Kirk claims.

In addition to this survey an overall bulldozer stripping program was conducted over the main anomalous zones outlined by an early soil sampling survey.

The interpretation of soil metal anomalies and the coincidence of the aeromagnetic data on the Southwestern portion of the claim area was thoroughly checked by bulldozer stripping around the 5,500' peak elevation on the assumption that a possible replacement type of mineral occurrence was present. This work did not yet disclose any significant mineralization in place, but the original geochemical anomaly was confirmed. A strong lead-zinc anomaly was located, of higher intensity as the one associated with the Faro deposit of Anvil Mining Corporation.

The lower elevation geochemical anomaly has conclusively been demonstrated to be an expression of multiple veins of fairly high grade which appear to be of sufficient economic significance due to good widths and length in the range of 38" to 46" for about a projected length of 700'.

The supervision of the tote road for access to the property was conducted by Sunset Mining personnel in conjunction with the writer's advice as well as for the stripping program conducted on the main showings.

2. WORK OUTLINED ON THE PROPERTY

Approximately 10.5 miles of tote road was constructed from the Highway connecting Ross River to Carmacks.

The distance from Ross River to the point where the tote road junction starts is approximately 16 miles.

Average width of the road is about 14' and it was prepared with good ditches to obtain good drainage and stabilize the ground when permafrost was disturbed.

Although the road will not be readily useable during the summer months, it is envisaged that a gravel pit already existent adjacent to the main highway could be used for improvement and filling whenever it is required.

The bulldozer trenching program was carried out with a D-7E equipped with a single Caterpillar ripper which proved itself fairly effective in the type of work assigned.

Two main trenches were made at about 5,250' elevation on claim Kirk #8, attempting to expose the mineralized zone which caused the long but narrow anomaly known as Zone 1 and 2. Long trenches in an East - West direction were made in accordance to the soil expression related to early surveys; they measured approximately 200' - 225' in length by about 25' - 35' in width.

The Cat was used to cut fast lines downhill whenever it was required to check possible target areas adjacent to quartz structures, which are known to have certain degrees of association with the mineralized zones. In addition to this, the ripper was effectively used to control the stability of the Cat whenever trenches were cut in the steep Eastern slopes of the claim area. A provisional camp was set up in the immediate vicinity of the trenches and three field days were spent using this arrangement rather than using the lower elevation camp approximately 2 miles Southeast of the main showings.

3. LOCAL GEOLOGY

The geology of the Al - Fargo - Kirk group is rather simple with limited rock types observed, their age generally now considered to belong to the Lower Cambrian unit. (Templeman Kluit, paper 68 - 14 - pp 43 - 52, G.S.C., 1968). The host rocks consist of dark to light grey phyllites with very minor quartzitic horizons and a subdivided slaty horizon only apparent in claim No. 3 which has a definitely different structural trend striking about N 10° - 15° Easterly, whereas general strikes of the phyllites are about East - West with slight variations from this bearing.

The majority of the outcrops within the phyllite are very characteristic because of the fine foliated or phyllitic texture which is everywhere evident when a good exposure is located.

Because the main showings are all located above the tree line, structural features are fairly evident such as a broad anticline with an axis striking roughly East - West and an estimated plunge of 60° Easterly. This anticline expression is observed in a gentle saddle running Northeast - Southwesterly at about 5,400' elevation on claim No. 6 and where sharp opposite dips of the beds are observed within an intervening distance of about 20'. The phyllites in the Northern limb of the anticline are lighter in colour, probably more siliceous or closer to a metaquartzite rock where as the Southern flank is closer to a slatey type. In addition, it appears that the dips are much steeper on the Northern side indicating an asymmetric plunging anticline.

Generally speaking, it is evident throughout the main well exposed outcrops that the rock cleavage is parallel to sub-parallel to the bedding and hence it may be called bedding cleavage. This cleavage, parallel to bedding, may be due to various possible factors or a combination of them such as, (a) isoclinal folding, (b) flow parallel to bedding and (c) load metamorphism.

Because of the closeness to the Tintina fault structure and related major structural features which bisect the Northern portion of the property, it is suggested that a zone of weakness in a East - West axis was created and ensued the ground openings which were at a later stage filled by a mineralized fluid stage.

Gossan areas are very evident in the metaquartzites and phyllites and the degree of alteration is pervasive adjacent to the vein zones parallel to an increase in silicification of the wall rock.

Late quartz veins are widespread in the claim area, however, after a close examination they are clearly barren and possibly belong to a later stage of mineralization.

Because of the limited exposed rocks in the lower ground East and West of the main showings and fairly deep overburden masking much of the claim geology, no comment could be made in regards to the correlation of gradational rock changes for such a large area.

4. ECONOMIC GEOLOGY

Bulldozer stripping has exposed two fairly well mineralized veins or fault structures with tentative lengths of about 600' - 700' and still open at both ends.

As the Eastern slope is very abrupt, no trenching was done in this sector; due to the adverse weather condition, cat stripping was curtailed, moreover, as all the targets were already tested it was considered that sufficient potential is present in the property so as to consider the drilling stage for the next season.

Although the true widths are not easily observed, an estimated 40" appears to be a fair average of both structures, which are separated about 200' in a North - South bearing.

Using an extrapolated figure of 750' - 800' from the detailed geological mapping, it appears that this zone could extend well beyond the defined structures shown by the stripping, particularly in an Easterly direction.

Mineralization in the No. 1 showing exhibits a lead rich, zinc deficient occurrence with a low quartz secondary mineralization. Galena and minor cerussite with small sub-microscopic sphalerite were observed particularly adjacent to the hanging-wall side of the vein. The samples obtained from the No. 1 showing are as follows:

Sample No.	Width	oz/t.		% Zn.	Ag. - Pb. Ratio	Remarks
		Ag.	% Pb.			
31241	40"	4.6	30.70	0.10	1:6.6	Vein material
31242	Est. 42"	2.6	19.62	0.33	1:8	20" NW of 31241, same structure.

The strike of the structure in the No. 1 showing is about N 85° E with an estimated dip of about 80° to the North.

When the first trench was cut it was evident that a N 60° E split or branching vein was present in the Northern wall of the main trench with a 48" width and with some visible galena in a strongly altered wall rock. The sample obtained from this structure is as follows:

Sample No.	Width	oz/t.		% Zn.	Ag. - Pb. Ratio	Remarks
		Ag.	% Pb.			
31239	48"	0.55	1.84	0.25	1:3.3	Possible vein split from H.W. side N. of No. 1 vein.

Trenching in the No. 2 showing exposed a strong structure of 48" average width and striking sub-parallel to the No. 1 showing. The galena occurrence is intimately associated with strong pale coloured sphalerite and with small to medium quartz stringers and occasional wallrock fragments enclosed in the matrix.

No alteration or oxidation was observed in the immediately adjacent phyllites which dip steeply to the North with a pronounced flattening, away from the structure. It is interesting to point out that comparing both showings so close to each other, significant mineralization and alteration differences are evident. Following are the selected grab samples and chip results across the trench where mineralization was observed in place:

<u>Sample No.</u>	<u>Width</u>	<u>oz/t. Ag.</u>	<u>% Pb.</u>	<u>% Zn.</u>	<u>Ag. - Pb. Ratio</u>	<u>Remarks</u>
#4	39"	2.1	8.16	10.55	1:4	Fairly high No. 2 V. sphalerite content.
#22	Est. 28"	6.2	49.46	0.53	1:8	Grab sample noticeably less Zn. than sample No. 4.

Arithmetic average veins # 1 & #2 = 26.98% Pb.

5. GEOCHEMICAL SURVEY

Attempting to evaluate and pinpoint the geochemical anomaly related to an early soil sample program carried out in September 1967, reconnaissance type of soil samples were taken during the stripping program. A total of 24 samples were taken at variable intervals following the 5,600' contour in and around claim Kirk #3 and a

single line cut by ripper was also used for this purpose towards Kirk #5 claim (see fig. 1).

All the samples were obtained whenever possible in the "B" horizon with very moderate organic content observed in the upper horizons. When permafrost was too shallow to permit a good depth average of about 9", the ripper was effectively used for this purpose. As topography plays an important and special role in the formation of secondary dispersion in glacial soil which differs considerably from that in residual soils, it was felt that the 5,600' to 5,500' levels were ideal for this type of survey, furthermore, a conclusive isomagnetic trend warped around the nose of this ridge suggested a strong coincident factor to the geochemical data available. All the samples were analyzed by Vancouver Geochemical Laboratories using the Techtron Atomic Absorption technique using a standard model AA4 spectrophotometer.

The generally accepted background for this area is about 25 p.p.m. Pb. and about 80 p.p.m. Zn.; when we consider that 90% of all the samples show about 4 to 20 times above background for both metals with silver values averaging 2.5 p.p.m., it is suggested that a careful detailed soil survey should be implemented in the area between the known veins and the higher contours (5,500 - 5,600') claim A1 #3 and A1 #5 lying West of the main trenches.

The area of future soil surveying is about 3,000' in a Northeasterly direction and about 3,500' in an East - West line passing through claims Kirk #5 and #6.

This zone is potentially a good target for a detailed soil survey as it lies on a well drained slope to the North and East and the previous samples have indicated a good build-up in that direction. The writer has carefully checked the west end of the claim area on the assumption that a clue could be derived from scattered float specimens lying downslope and has also checked any significant increase in pyrite in the slatey phyllites which is known to occur as a halo around the Faro orebody.

As this procedure did not meet with success, long ripper passes were made to obtain a good check of the soil and at the same time, the samples were obtained.

As a matter of academical interest it is interesting to point out that soil samples taken over the Faro orebody only 22 miles N from this claim group, indicate Pb. - Zn. values substantially lower than the ones taken from the same "B" horizon as obtained by the writer. (J.A.C. Fortescue, G.S.C., paper 67-40, page 12).

6. SUMMARY and RECOMMENDATIONS

The work conducted intermittently during October 1969, produced results which now warrant the first stage drilling in an area where there is reasonable expectancy for a good grade vein deposit.

The mapping, soil and bulldozer stripping program was largely hampered by the lateness of the season, however the objectives were reached at a reasonable cost.

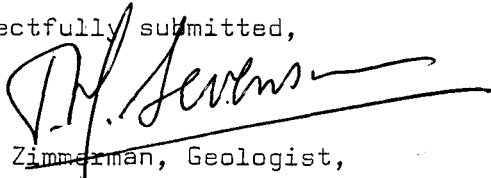
The exploration stage by drilling should perhaps, be preceded by close spaced geochemical survey East and West of the main showings. In addition, the Western portion of Kirk #3 and #4 claims should also be close spaced soil sampled to pinpoint the anomaly, lying around the NE flank of the ridge (see topography map).

Camp operation should be ideally operated at the higher elevation contour around the Fargo #2 and #5 claims where good timber and water could easily be obtained from the lower adjacent valley.

The access road should be continued from where it was curtailed in order to obtain 4 wheel drive vehicles ready access to the camp. It is estimated that about 10 - 12 days will be required for this purpose. Shallow electromagnetic work of the horizontal loop type could be of significant advantage to help pinpoint the various anomalies suggested by the geochemical survey.

It is also recommended that a detailed examination should be made of a granodiorite intrusive body lying 1 mile Northeasterly of the claim area and some reconnaissance geological mapping should be implemented with a follow-up geochemical soil survey.

Respectfully submitted,

for 
C.E. Zimmerman, Geologist,
P.H. SEVENSMA CONSULTANTS LTD.

November 8, 1969.

SUNSET MINING CORPORATION LTD.AL - KIRK GROUP105-K-3, Whitehorse, M.D.byP.H. Sevensma, Ph.D., P. Eng.1. SUMMARY

The initial exploration program conducted during October 1969 on the AL-Kirk Group has obtained significant success in establishing two strong lead-zinc bearing zones over a significant length. Indicated size of each showing area is of the order of 300-400 tpmf, and the structures are open at both ends. Average indicated grade is of the order of 4 ^{oz.}/t Ag, 27% Pb and 3% Zn. The silver content is lower than in the original samples but the showing area and its surrounding alteration halo rate as a significant base-metal prospect.

In addition, the geochemical anomaly on the West part of the property indicated by a previous survey, has been confirmed and values obtained are better than those located over the Faro ore-body 25 miles to the Northwest. The Swim Lake ore-body lies 10 miles to the North.

The showing is the first significant lead-zinc showing located in Lower Cambrian rocks in the Anvil district since the discovery of the Faro body, and the presence of the nearby significant silver-lead-zinc anomaly is considered highly encouraging, even if in

initial limited stripping the source of the mineralization has not yet been located in place.

As a result, drilling of a minimum of 5000' on the showing area is now warranted, based on one 300' long - 50° hole and one 400' long - 70° hole on 7 sections 200' apart, covering the approximate 700-800' known length of the showing, plus one section on either side, for a total minimum zone length of 1200' to be explored.

A detailed soil survey on lines 200' apart with 100' sample interval is recommended for the area centered on the Westerly soil anomaly, followed by geophysical work as required and by the minimum of 3000' of initial drilling originally recommended.

The fact that the soil anomaly and the showing are related to a pronounced E-W trending anticline is of considerable interest and suggests good geological control.

On the basis of the geological trend and the presence of a significant airborne magnetic low to the South East it is also recommended to acquire the 32 Crew claims adjoining the AL-Kirk in this direction, and to conduct preliminary geochemical reconnaissance on this group, after ground magnetics to pinpoint the magnetic feature on the ground. The magnetic low is similar to the one associated with the high soil anomaly and lies on the strike - extension of the latter.

2. RECOMMENDATIONS

In view of the encouraging results obtained in this geologically eminently favorable environment, an expanded program is recommended, the cost of which is estimated as follows, including work on the Crew Group.

1.	Topo map 1" = 500' Crew Group area	\$1,500.00
2.	Photogeological studies	1,500.00
3.	Improvement to tote road, 200 cat-hours @ \$40.00	8,000.00
4.	Stripping, 300 hours @ \$40.00	12,000.00
5.	Geological mapping, 4 man-months	6,000.00
6.	Prospecting - 4 man-months	3,500.00
7.	Camp Construction	5,000.00
8.	Truck transportation	5,000.00
9.	Line-cutting and Picketing, 20 line miles @ \$100.00	2,000.00
10.	Soil Sampling, 1000 samples @ \$6.00	6,000.00
11.	Geophysical surveys, Crone EM, magnetic on Crew I P 20 line miles @ \$300.00	4,000.00 6,000.00
12.	Assaying	1,500.00
13.	Miscellaneous freight, mobilization	3,000.00
14.	8000' of drilling, BQ, \$16.00 per foot overall	128,000.00
15.	Camp operation, 10 men, 4 months @ \$400. per man month	16,000.00
16.	Radio, telephone	3,000.00
	Total Field Budget	\$ 212,000.00
	Engineering and Supervision, 15%	31,000.00
	Administration and overhead, 10%	24,000.00
	Contingencies, 10%	24,000.00
	Total Budget	\$ 291,000.00

CERTIFICATE

I, PIETER H. SEVENSMA, of 908, 1280 Haro Street, in the City of Vancouver, in the Province of British Columbia, DO HEREBY CERTIFY:

1. THAT I am a Consulting Geologist with a business address at 715-850 West Hastings Street, in the City of Vancouver, in the Province of British Columbia.
2. THAT I am a graduate of the University of Geneva, Switzerland (Physics and Chemistry, 1937; Geology and Mineralogy, 1937) where I obtained my Ph.D. in Geological and Mineralogical Sciences in 1941.
3. THAT I am a Registered Professional Engineer in the Geological Section of the Association of Professional Engineers of the Province of British Columbia and of the Association of Professional Engineers of Yukon Territory.
4. THAT I have practiced my profession as a geologist for the past 30 years.
5. THAT the information contained in the report of November 8, 1969 by P.H. Sevensma Consultants Ltd. is based on a personal examination of the Claim-group, on a study of all previous work and on the results of work-program conducted by Mr. C.E. Zimmerman, of P.H. Sevensma Consultants Ltd. from October 1 - 22, 1969.
6. THAT I have no direct or indirect interest in any of the securities or properties of Sunset Mining Corporation Ltd. (N.P.L.), nor do I expect to receive or acquire any.

Dated this 8th day of November, 1969.

A handwritten signature in black ink, appearing to read 'P.H. Sevensma', written over a horizontal line.

P.H. Sevensma, Ph.D., P. Eng.

Success in this stage would likely lead to underground exploration on the main showing at an elevation of about 4800' - 4900' i.e. some 400' in elevation below the outcrops.

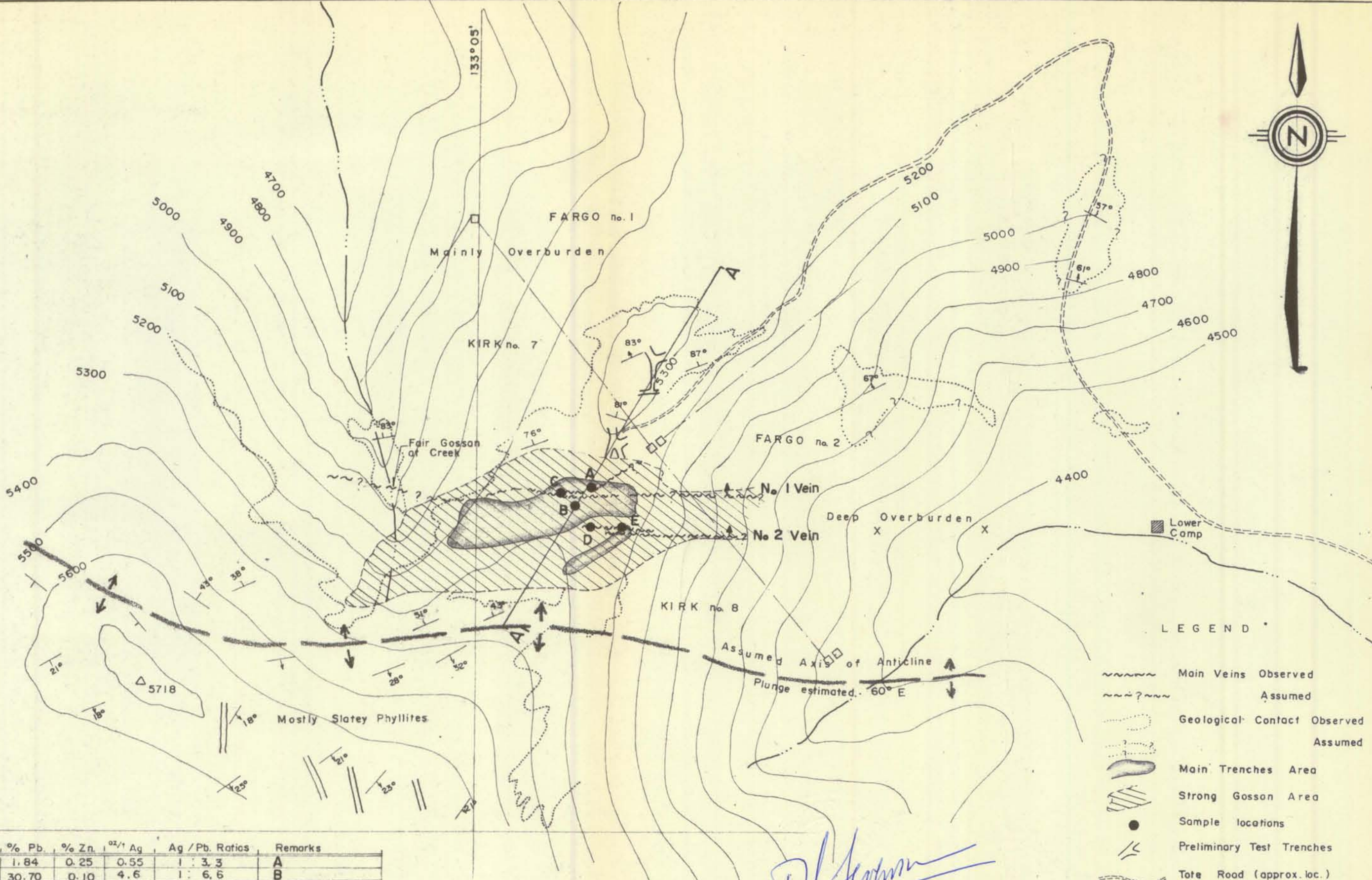
Success in the soil anomaly area would lead to an expanded drill-program. This area is also easily accessible by underground development, and is suitable for open-pit work if a body minable by this method were found.

Respectfully submitted,

A handwritten signature in cursive script, reading "P.H. Sevensma", written over a horizontal line.

P.H. Sevensma, Ph.D., P. Eng.
P.H. SEVENSMA CONSULTANTS LTD.

November 8, 1969.



LEGEND

- Main Veins Observed
- Assumed
- Geological Contact Observed
- Assumed
- Main Trenches Area
- Strong Gossan Area
- Sample locations
- Preliminary Test Trenches
- Tote Road (approx. loc.)

62° 2 1/2'

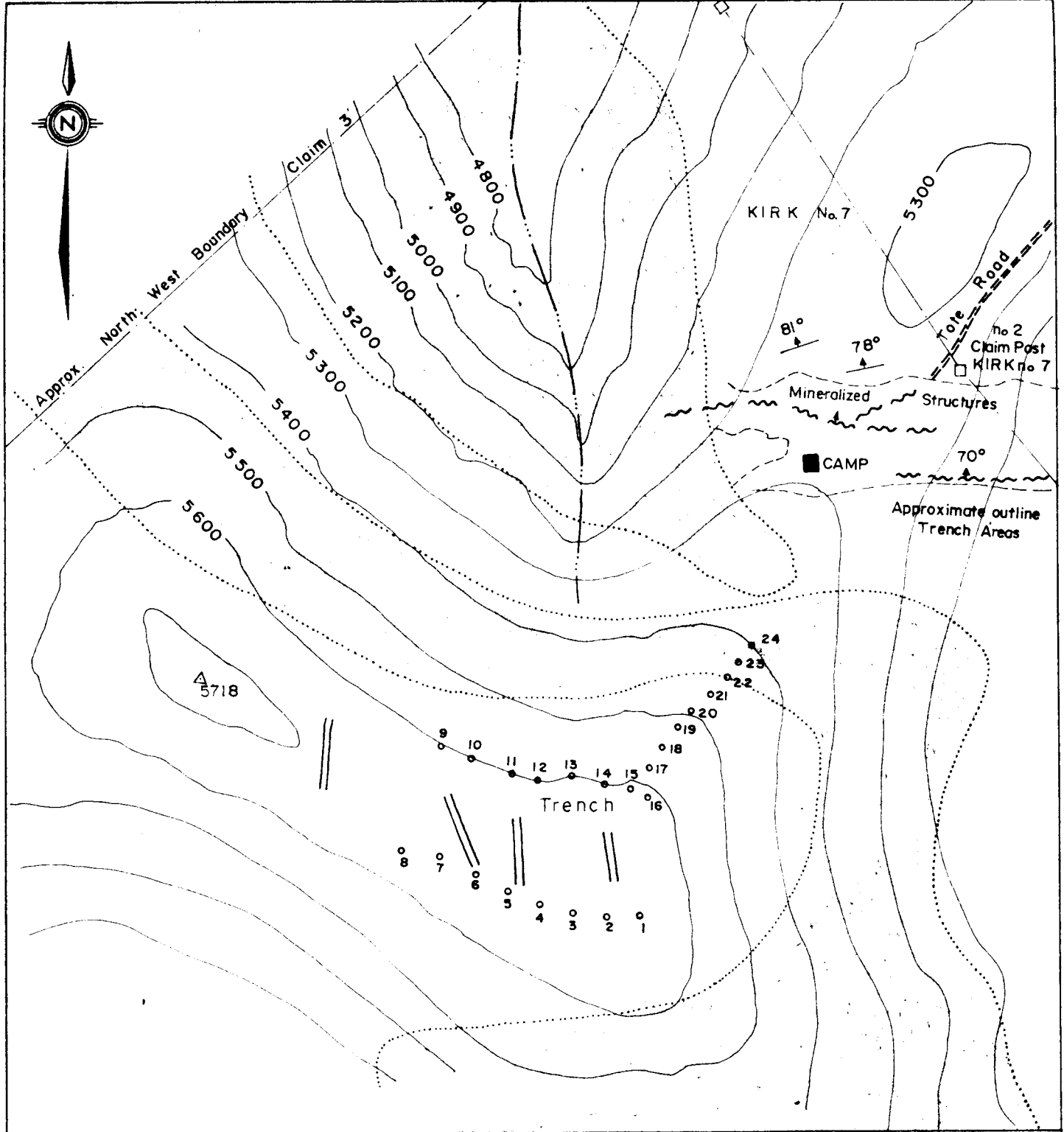
Sample no.	Width	% Pb.	% Zn.	oz/t Ag	Ag / Pb Ratios	Remarks
31239	49"	1.84	0.25	0.55	1 : 3.3	A
31241	40"	30.70	0.10	4.6	1 : 6.6	B
31242	42"	19.62	0.33	2.6	1 : 8	C
* 4	39"	8.16	10.55	2.1	1 : 4	D
* 22	28"	49.46	0.53	6.2	1 : 8	E

Samples obtained by C.E. Zimmerman, Oct. 1969.
 Assayed by Coast Eldridge, Report no.: 460-A-9177 Date: Oct. 29, 1969

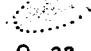
P.H. Sevensma

AL-FARGO-KIRK CLAIMS

SUNSET MINING CORPORATION LTD.
 GEOLOGY and SAMPLE LOCATIONS
 Whitehorse M.D.-Y.T. 105-K-3
 P. H. Sevensma Consultants Ltd. Vancouver, B.C.
 Dwg. No.: Fig: I Nov. 1969, Scale: 0 500'



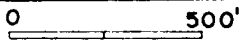
NOTE: All samples obtained "B" or "B"1 horizon. All distances were paced, however interval between samples is about 125'.

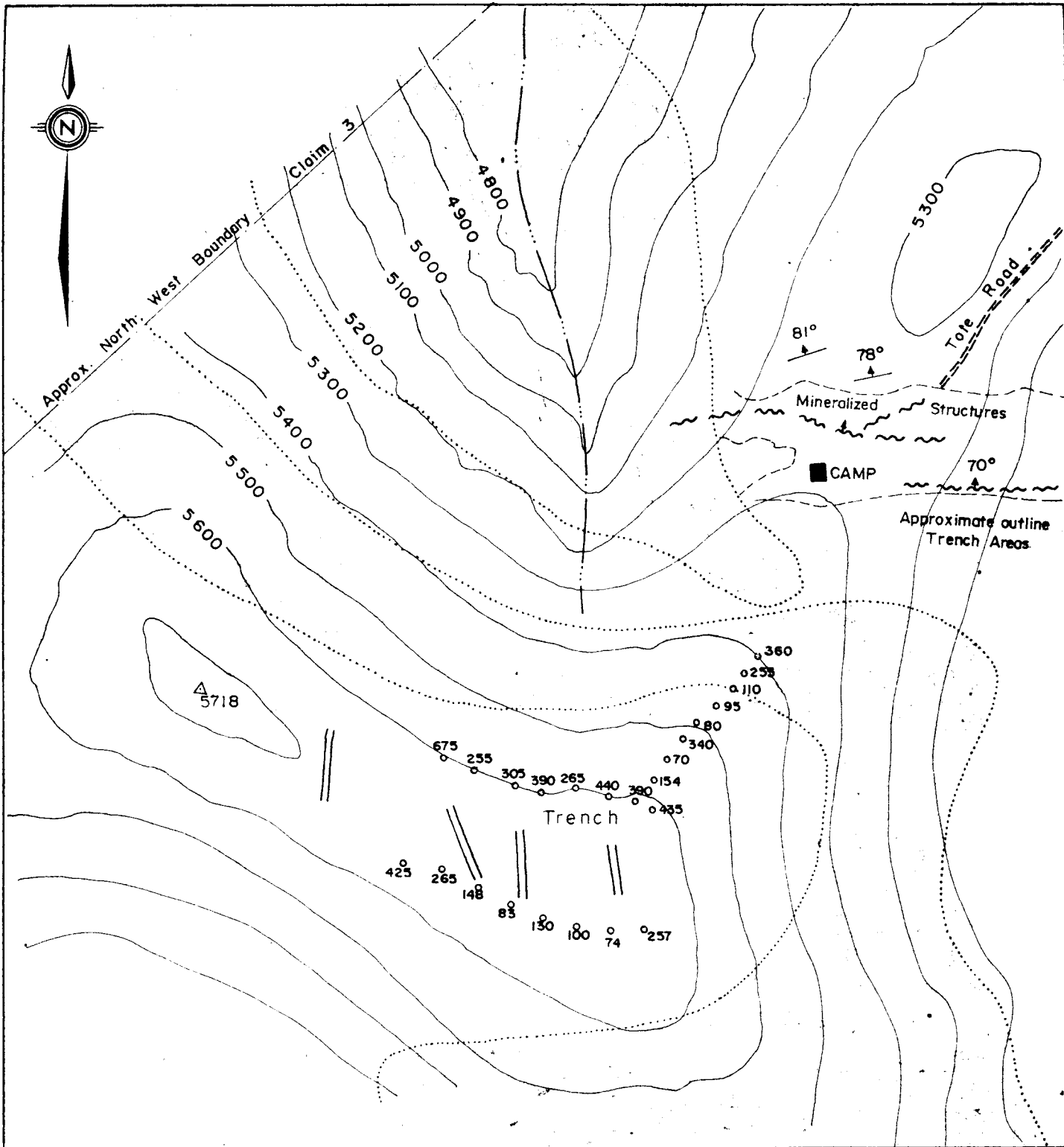
Isomagnetic Anomaly 
Soil samples numbers 0 22

Assayed by Vancouver Geochemical Lab. Ltd.,
using Techtron AA method.
Rep. no: 69-60-001
Date: Oct. 31, 1969.

P. H. Sevensma

SOIL SAMPLE LOCATIONS

SUNSET MINING CORPORATION LTD.	
AL FARGO KIRK GR. - Soil Samples Reconnaissance	
Whitehorse M.D. - Y.T.	105-K-3
P. H. Sevensma Consultants Ltd. Vancouver, B.C.	
Dwg. No. Fig: 2	October 1969, Scale: 0  500'



NOTE: All samples obtained "B" or "B" I horizon. All distances were paced, however interval between samples is about 125'.

Assayed by Vancouver Geochemical Lab. Ltd., using Techtron AA method.

Rep. no: 69-60-001

Date: Oct. 31, 1969.

P. H. Sevensma

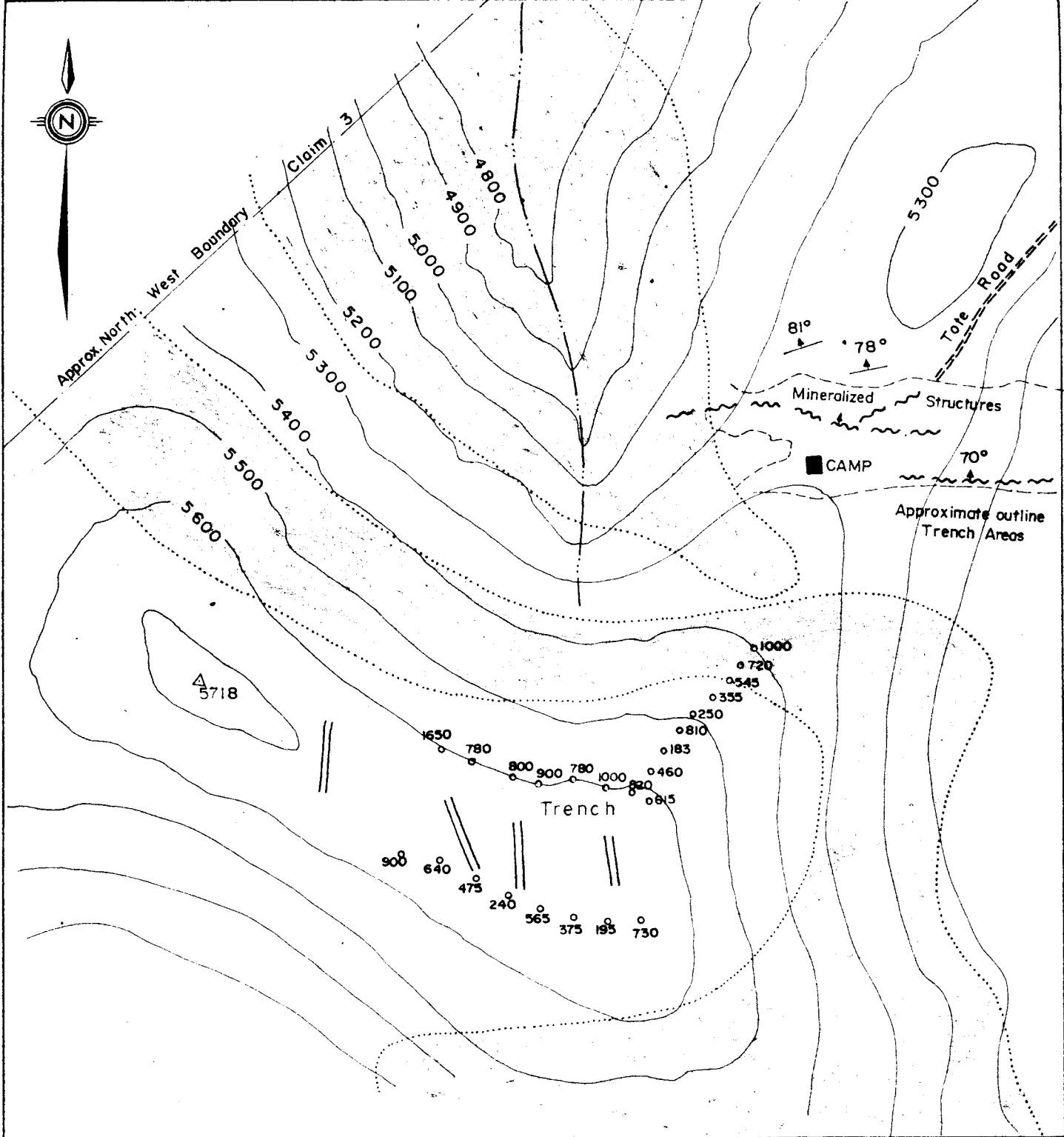
Pb.

- 25 p.p.m. Background o
- 50 p.p.m. Threshold o
- > 50 p.p.m. A normalous o
- Peak o
- Isomagnetic Anomaly

SUNSET MINING CORPORATION LTD.	
AL FARGO KIRK GR. — Soil Samples Reconnaissance	105-K-3
Whitehorse M.D. — Y.T.	P. H. Sevensma Consultants Ltd. Vancouver, B.C.
October 1969,	Scale:

Dwg. No.:

Fig: 3



NOTE: All samples obtained "B" or "B" I horizon. All distances were paced, however interval between samples is about 125'.

Assayed by Vancouver Geochemical Lab. Ltd., using Techtron AA method.

Rep. no: 69- 60- 001

Date: Oct. 31, 1969

Zn.

- 80 p.p.m. Background ○
- 150 p.p.m. Threshold ○
- > 150 p.p.m Anomalous ○
- Peak ○
- Isomagnetic Anomaly

P. H. Sevensma

SUNSET MINING CORPORATION LTD.

AL FARGO KIRK GR. — Soil Samples Reconnaissance.

Whitehorse M. D. — Y.T.

105 - K - 3

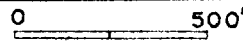
P. H. Sevensma Consultants Ltd. Vancouver, B.C.

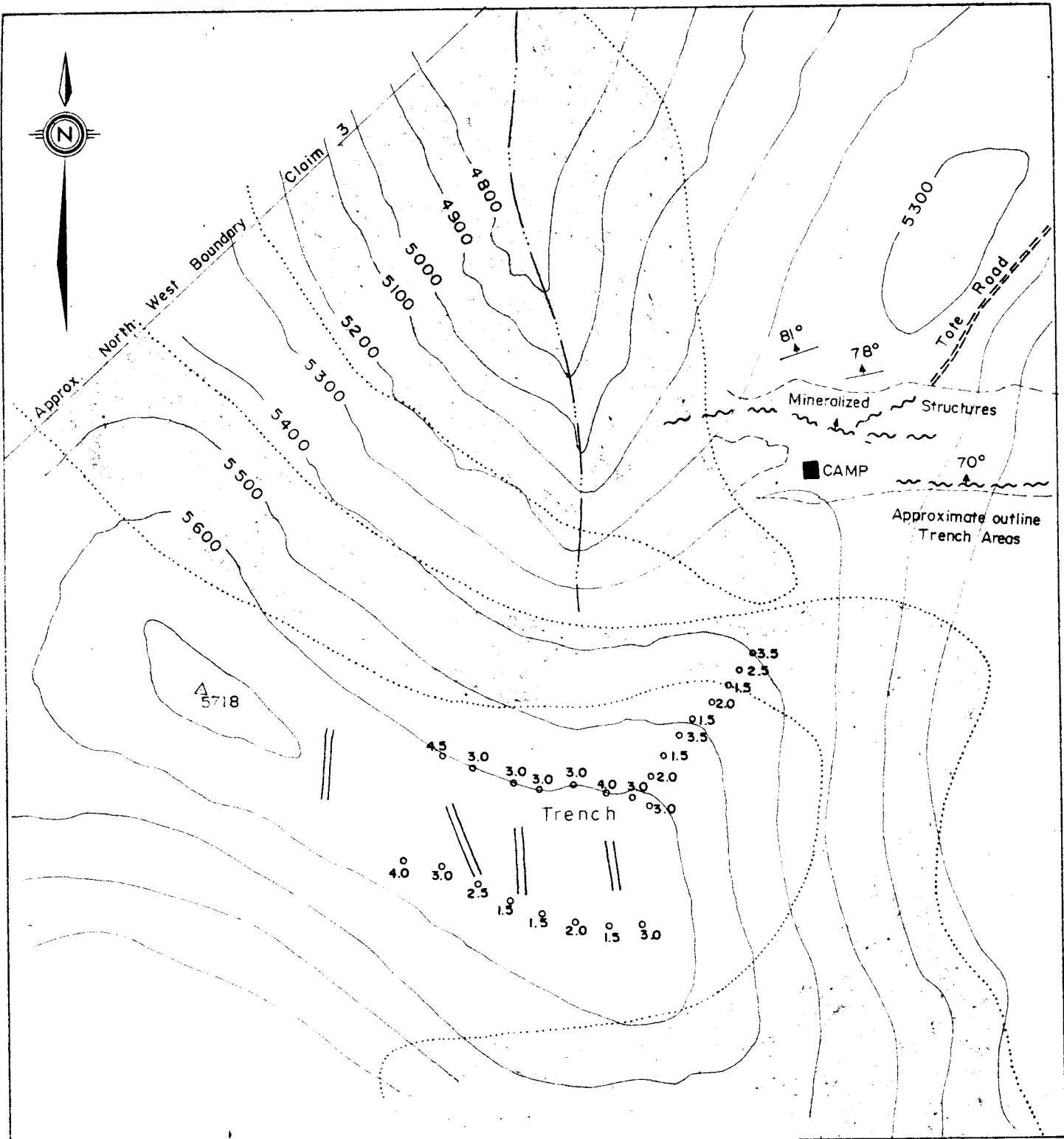
Dwg. No.:

Fig: 4

October 1969,

Scale:





NOTE: All samples obtained "B" or "B" I horizon. All distances were paced, however interval between samples is about 125'.

Assayed by Vancouver Geochemical Lab. Ltd., using Techtron AA method.

Rep. no: 69-60-001

Date: Oct. 3, 1969.

P. H. Sevensma

Ag.

- 1 p.p.m. Background
- 2 p.p.m Threshold
- > 4 p.p.m. Anomalous
- Peak
- Isomagnetic Anomaly

SUNSET MINING CORPORATION LTD.

AL FARGO KIRK GR. - Soil Samples Reconnaissance

Whitehorse M.D. - Y.T.

105-K-3

P. H. Sevensma Consultants Ltd. Vancouver, B.C.

Dwg No.

Fig: 5

October 1969,

Scale:

0 500'

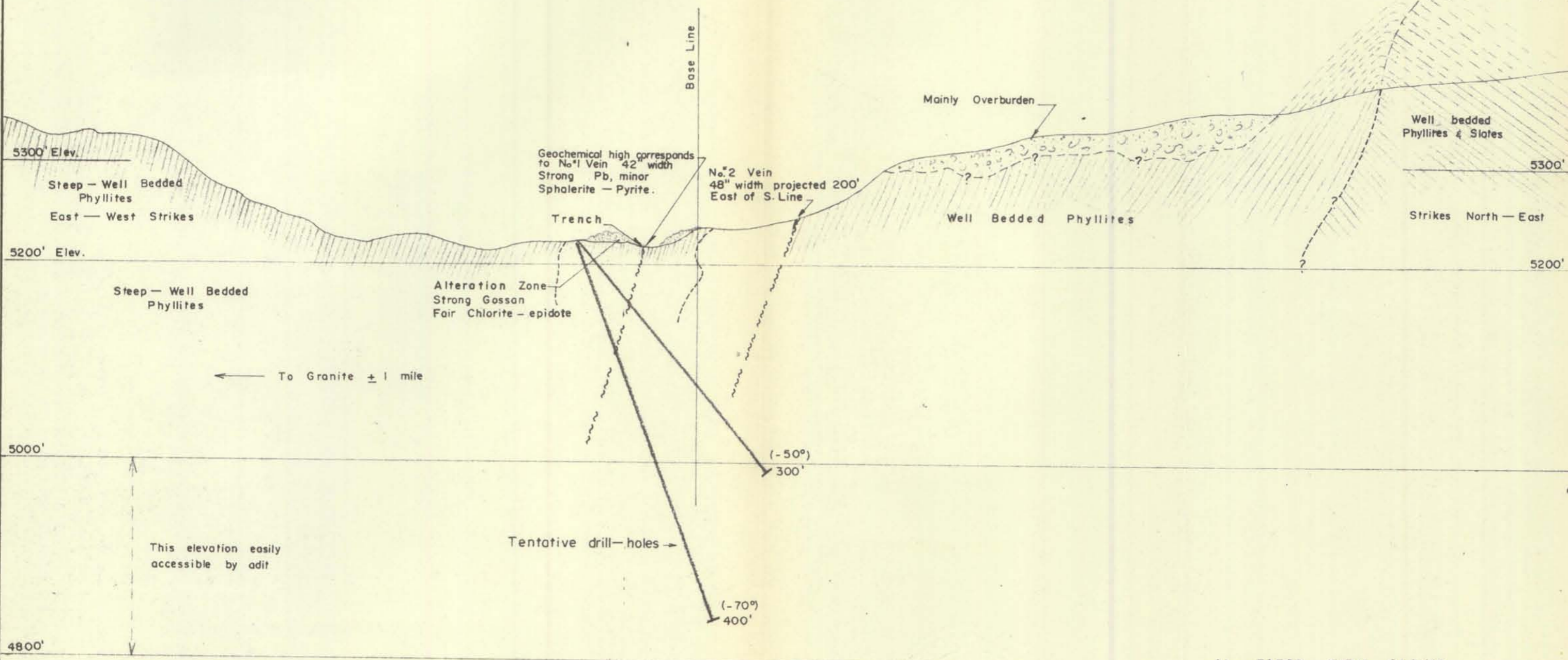
A

A₁

NORTH EAST

SOUTH WEST

Area, of soil anomaly



← To Granite ± 1 mile

Tentative drill-holes →

AL - FARGO - KIRK CLAIMS

P. H. Sevensma

SUNSET MINING CORPORATION LTD.

Profile section A-A₁ across main structural features

Whitehorse M.D.-Y.T. 105-K-3

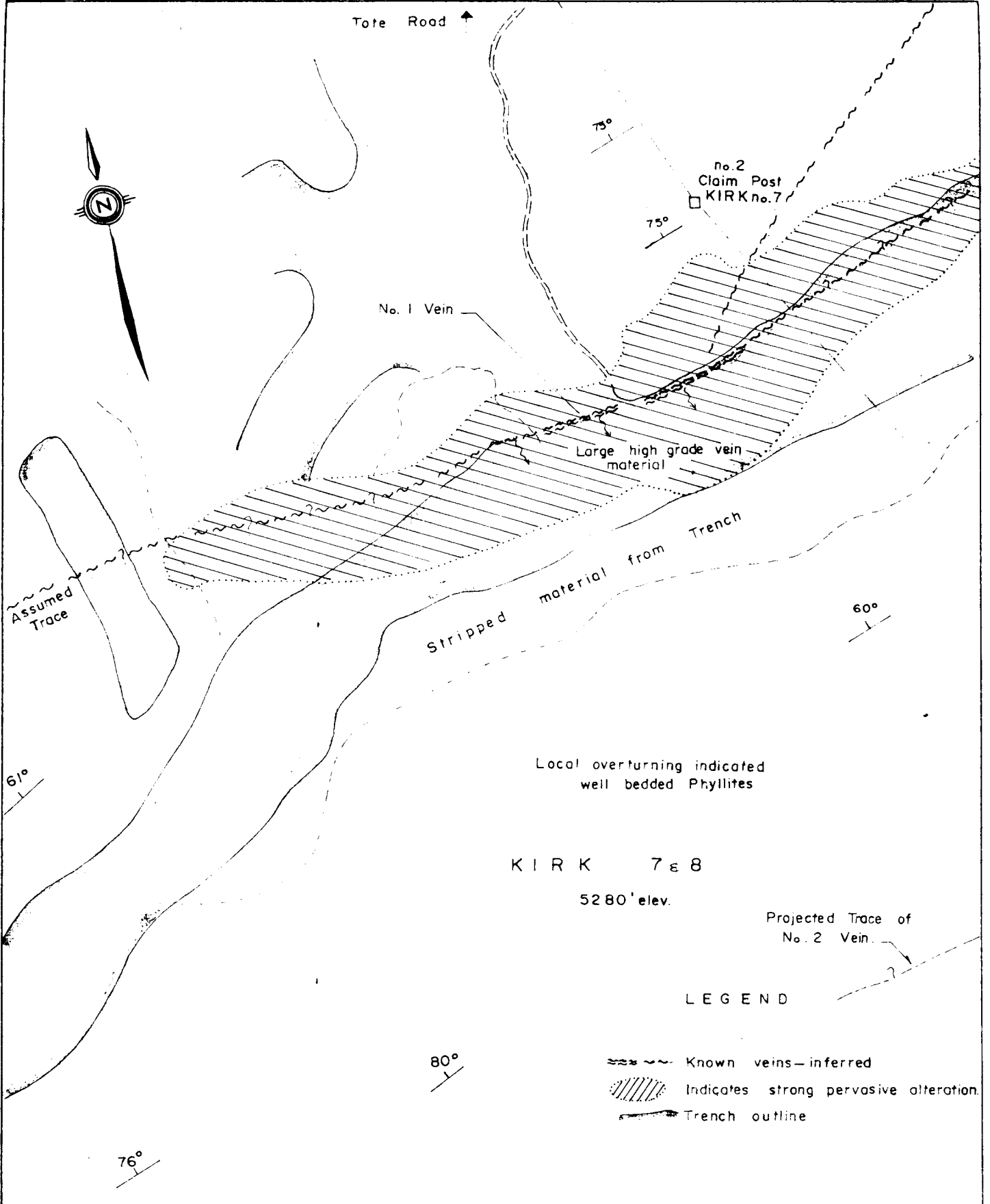
P. H. Sevensma Consultants Ltd. Vancouver, B.C.

Dwg. No.

Fig. 6

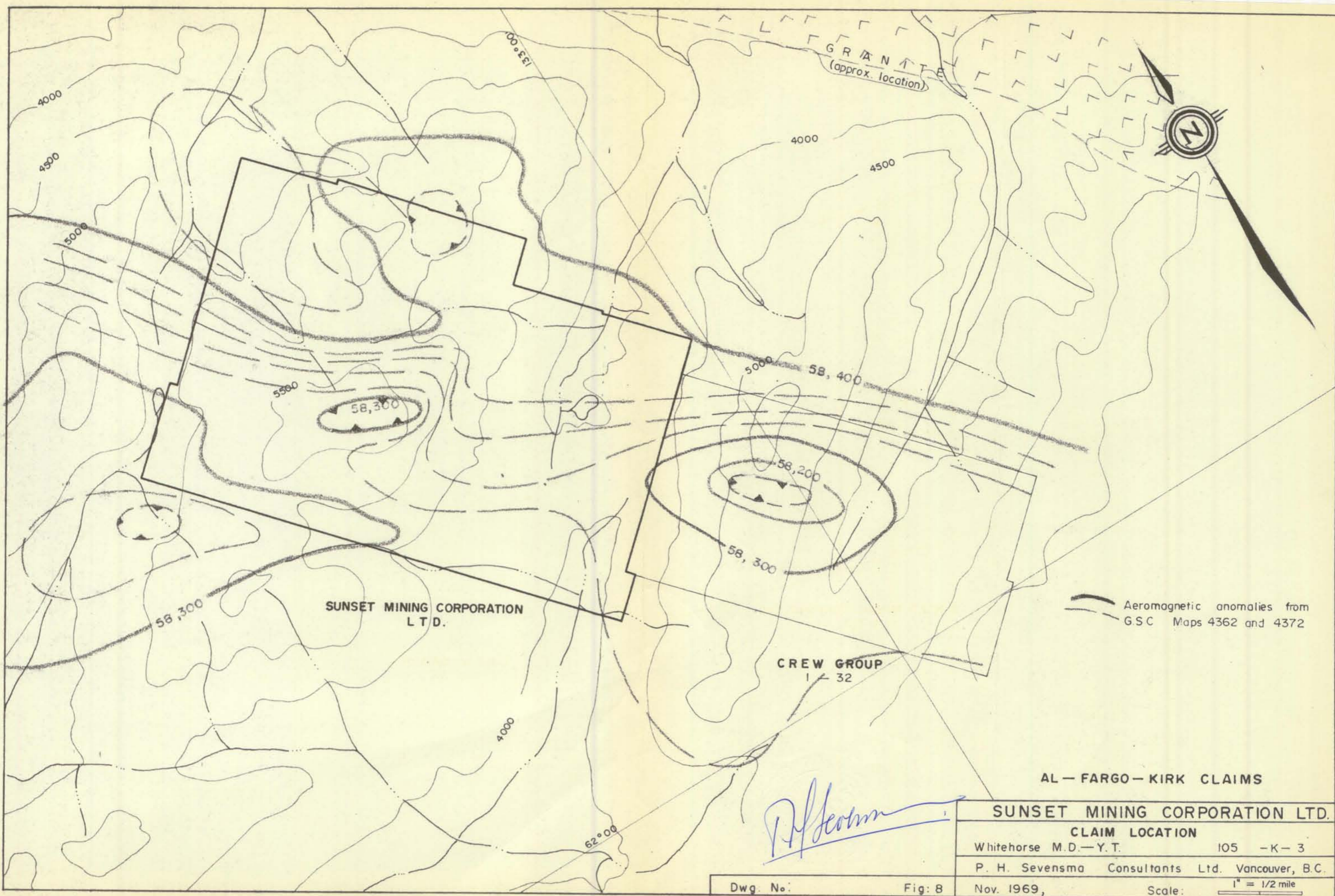
Nov. 1969,

Scale: 0 100'



P. H. Sevensma

SUNSET MINING CORPORATION LTD.	
Detailed Geology of No. 1 Vein	
Whitehorse M.D.—Y.T.	105—K—3
P. H. Sevensma Consultants Ltd. Vancouver, B.C.	
Dwg. No.:	Fig: 7
Nov. 1969	Scale: 0 40'



SUNSET MINING CORPORATION LTD.

CREW GROUP
1-32

Aeromagnetic anomalies from
G.S.C. Maps 4362 and 4372

AL-FARGO-KIRK CLAIMS

SUNSET MINING CORPORATION LTD.

CLAIM LOCATION

Whitehorse M.D.—Y.T. 105 -K- 3

P. H. Sevensma Consultants Ltd. Vancouver, B.C.

Dwg. No. Fig: 8

Nov. 1969, Scale: 1" = 1/2 mile

APPENDIX "A"

List of Personnel Employed
on the A1 - Kirk - Fargo Group
Sept. 15 - October 22, 1969.

Manager Don Gordon, Box 234, Ft. Nelson, B.C.

Field Supervisor William Wilson, Box 154, Ft. Nelson, B.C.

Geological Engineer C.E. Zimmerman,
P.H. Sevensma Consultants Ltd.

Cat Operator Leo Levesque,
Primary Construction Co. Ltd., Whitehorse, Y.T.

Cat Operator Pasco Wilson,
E. Cooper & Son Contracting Ltd., Ft. Nelson

Cat Supervisor F. Lavoie,
Primary Construction Co. Ltd.

Consulting Geologist P.H. Sevensma, Ph.D., P. Eng.,
715 - 850 West Hastings St.,
Vancouver 1, B.C.


P.H. Sevensma

APPENDIX "B"

Part of Costs Incurred in Fieldwork
on Al - Kirk - Fargo Group
Sept. 15 - October 22, 1969.

Exhibit No.

1.	Mineral Lounge, Ross River	\$ 664.00
	W. Wilson, Sept. 17 - 30, 1969	997.00
	W. Wilson, Oct. 1 - 22, 1969.....	814.95
2.	Ed's Dept. Store, Ross River, Sept. 1969	291.03
	Ed's Dept. Store, Ross River, Oct. 1969	535.00
3.	Ross River Motors, Sept. 1969	82.75
	Ross River Motors, Oct. 1969	137.66
4.	Hertz Rent A Car, Sept. 30 - Oct. 18	649.98
5.	Primary Construction Co. Ltd., Cat	3,552.50
	Streeper Transport	858.00
6.	E. Cooper & Son Contracting Ltd.	4,797.00
7.	P.H. Sevensma Consultants Ltd., Sept. 26	183.00
	P.H. Sevensma Consultants Ltd., Oct. 25	1,334.80
8.	P.H. Sevensma Consultants Ltd., June 12	882.55
	P.H. Sevensma Consultants Ltd., Nov. 10	2,407.45
	Total	<u>\$18,137.67</u>


P.H. Sevensma

CANADA) IN THE MATTER OF A GEOLOGICAL AND GEOCHEMICAL
)
YUKON TERRITORY) REPORT AND PHYSICAL WORK ON THE AL - FARGO -
)
TO WIT:) KIRK AND CREW CLAIMS.

I, Peter H. Sevensma,
of, 715-850 West Hastings Street,
Vancouver 1, B.C.

HEREBY MAKE OATH AND SAY AS FOLLOWS:-

That attached hereto, this my Affidavit, marked Appendix
"A" and "B" respectively is a list of personnel employed in the
performance of the work and a statement of the costs incurred for
this work which I certify to be correct to the best of my knowledge
and belief.

SWORN before me at the)
)
City of Vancouver,)
)
Province of British Columbia,)
this 25th day of Nov.)
)
A.D. 1969.)



Jean Scobie
A Commissioner for taking Affidavits
in and for the Yukon Territory.

APPENDIX "C"

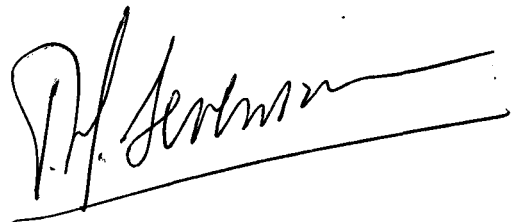
Estimated split on physical work and on geological - geochemical program, based on a 10 mile length of road for the work performed on the Al - Fargo - Kirk - Crew claims.

1. Road	\$10,000.00
2. Trenching	3,000.00
3. Geology, Geochemistry	5,137.67
	<hr/>
Total	<u>\$18,137.67</u>

Note: The bill by Streeper Transport, Exhibit no. 5, refers to demobilization of the bulldozer only. No invoice was found for mobilization from Fort Nelson, which should have amounted to the same sum of \$858.00.

Work has been allocated as follows:

		<u>Required</u>
Group 1 - 16 claim years	Tote-road	\$1,600.00
Group 2 - 16 claim years	Tote-road	1,600.00
Group 3 - 16 claim years	Tote-road	1,600.00
Group 4 - 21 ¹ / ₃ claim years	Tote-road	2,134.00
Group 5 - 14 ² / ₃ claim years	Tote-road	1,468.00
		<hr/>
Total - 84 claim years	Tote-road	\$8,402.00
Group 6 - 16 claim years	Trenching	1,600.00
Group 7 - 20 ² / ₃ claim years	Geol. - Geochem.	2,066.67
		<hr/>
	Total	<u>\$12,068.67</u>



APPENDIX "D"

A1 - Fargo - Kirk - Crew Claims

List of claims, representation work
carried forward to the common date
of February 27, 1971.

<u>Group</u>	<u>Claims</u>	<u>Present Expiry Date</u>	<u>No. Cl.</u>	<u>Years per claim to Feb. 27/71.</u>		<u>Claim Years</u>
1	Crew 1 - 6 Crew 17 - 26	Feb. 27/70. Feb. 27/70.	16	1 1		16
2	Crew 7 - 16 Crew 27 - 32	Feb. 27/70.	16	1 1		16
3	Fargo 9 - 16 A1 25 - 32	Nov. 16/69. July 17/70.	8 8	1 ¹ / ₃ 2 ² / ₃	32 ² / ₃ 16 ² / ₃	10 ² / ₃ 5 ¹ / ₃
4	A1 1 - 16	Nov. 16/69.	16	1 ¹ / ₃	64 ² / ₃	21 ¹ / ₃
5	Fargo 3 - 8 Kirk 9 - 18	Nov. 16/69. July 17/70.	6 10	1 ¹ / ₃ 2 ² / ₃	20 ² / ₃	8 6 ² / ₃
6	Kirk 1 - 8 A1 17 - 24	Nov. 16/69. July 17/70.	8 8	1 ¹ / ₃ 2 ² / ₃	32 ² / ₃ 16 ² / ₃	10 ² / ₃ 5 ¹ / ₃
Total			96 claims			100 claim yrs.

Last group, No. 7, using geological - geochemical work performed on the Kirk 5 - 8, where physical work has been applied in group 6.

<u>Group</u>	<u>Claims</u>	<u>Present Expiry Date</u>	<u>No. Cl.</u>	<u>Years per claim to Feb. 27/74.</u>		<u>Claim Years</u>
7	Kirk 5 - 8 Fargo 1 - 2	Feb. 27/71. Nov. 16/69.	4 2	3 4 ¹ / ₃		20 ² / ₃
Total			6 claims			20 ² / ₃ cl. yrs

[Handwritten Signature]

STATEMENT

1919

1919

M. J. ...

In a/c With

Am. Int. Mining Corp.

DATE	DESCRIPTION	CHARGES	CREDITS	BALANCE
Sept 19	AMOUNTS FORWARDED			
19	Balance	18 84		18 84
20	"	7 74		26 58
20	"	26 94		53 52
22	"	24 96		77 98
22	"	3 92		81 90
23	"	8 77		90 67
24	"	15 77		106 44
25	"	18 26		124 70
26	"	2 70		127 40
27	"	44 95		172 35
27	"	16 47		188 82
27	"	17 80		206 62
27	"	16 68		223 26
29	"	13 64		236 95
30	"	4 08		241 03

Chk. 69

TERMS	DATE	DESCRIPTION	AMOUNT	DATE	DESCRIPTION	AMOUNT
1	1919	Balance	18 84	1919	Balance	18 84
2	"	"	7 74	"	"	7 74
3	"	"	26 94	"	"	26 94
4	"	"	24 96	"	"	24 96
5	"	"	3 92	"	"	3 92
6	"	"	8 77	"	"	8 77
7	"	"	15 77	"	"	15 77
7	"	"	18 26	"	"	18 26
7	"	"	2 70	"	"	2 70
8	"	"	44 95	"	"	44 95
8	"	"	16 47	"	"	16 47
8	"	"	17 80	"	"	17 80
8	"	"	16 68	"	"	16 68
8	"	"	13 64	"	"	13 64
8	"	"	4 08	"	"	4 08

Exh. 2.

(HEREINAFTER CALLED "LESSOR" (CI-APRÈS APPELÉE LOCATEUR))

TO: <i>SUNSET Moving Co.</i> À: <i>Fr. Nunez</i> <i>Box 234860</i> <i>Don Head - 7746301</i>	UNIT NUMBER - NO DU VÉHICULE	CAR CHECKED IN AT (CITY) / LIEU DE RETOUR (VILLE)	DATE & TIME - DATE & HEURE
	OWNING CITY - VILLE PROP.	STATION	ARRIVÉE / DÉPART
CHARACTER OF CREDIT 1 2 3 4 5 OTHER	CAR MAKE - MARQUE	CAR RENTED AT (CITY) / AUTO LOUÉE À (VILLE)	DATE & TIME - DATE & HEURE
	LICENSE NO. - PLAQUES	STATION	OUT / DÉPART
THIS IS YOUR ORIGINAL INVOICE CECI EST VOTRE FACTURE ORIGINALE	LICENSE NO. - PLAQUES	CAR TO BE CHECKED IN AT (CITY) / LIEU DE DESTINATION	DATE & TIME - DATE & HEURE
	MILEAGE DETERMINED BY READING FACTORY INSTALLED ODOMETER	STATION	DAY MONTH YEAR
SETTLEMENT IS DUE UPON RECEIPT, AS NO STATEMENT WILL BE RENDERED	PARCOURS DÉTERMINÉ PAR LA LECTURE DE L'ODOMÈTRE POSÉ À L'USINE	HOURS / HEURES @ \$	
	MILEAGE IN LECTURE À L'ARRIVÉE	DAYS / JOURS @ \$	
VEUILLEZ RÉGLER SUR RÉCEPTION DE CETTE FACTURE, AUCUN ÉTAT DE COMPTE NE VOUS SERA ENVOYÉ.	MILEAGE OUT LECTURE AU DÉPART	2 WEEKS / SEMAINES @ \$	
	MILES DRIVEN / PARCOURS EN MILLES	MILES / MILLES @ \$ PER MILE / PAR MILLE	
PLEASE RETURN INVOICE - STUB BELOW WITH YOUR PAYMENT TO INSURE PROPER CREDIT	DEPOSIT - DÉPÔT	SUB SOUS - TOTAL	
	AUTHORISATION FOR COLLISION DAMAGE WAIVER	SUB SOUS - TOTAL	
VEUILLEZ RETOURNER CE TALON AVEC VOTRE REMISE AFIN QUE VOTRE COMPTE SOIT CRÉDITÉ	RENTED BY / LOUÉ PAR: <i>X [Signature]</i>	INTERCITY FEE / FRAIS INTER-CITÉS	
	THANK YOU - MERCI	RENTAL CHARGE / FRAIS DE LOCATION	
DETACH HERE / VEUILLEZ DÉTACHER ICI	ORIGINAL INVOICE NO. / NO FACTURE ORIGINALE	% TAX / TAXE	
INVOICE - STUB / FACTURE	C 462561	COLLISION DAMAGE WAIVER / FRAIS D'EXONÉRATION DE DOMMAGES PAR COLLISION	
PLEASE DETACH AND RETURN THIS STUB WITH YOUR PAYMENT IN THE ENCLOSED ENVELOPE	SHOW INVOICE NO. ON ALL CORRESPONDENCE / MENTIONNER LE NO DE FACTURE DANS TOUTE CORRESPONDANCE	TOTAL CHARGE / TOTAL DES FRAIS	
VEUILLEZ DÉTACHER ET RETOURNER CE TALON AVEC VOTRE REMISE DANS L'ENVELOPPE CI-INCLUSE	TO: → <i>[Signature]</i>	LESS: GAS / REPAIRS / MOINS: ESSENCE / RÉPARATION	
	PREPARED BY - PRÉPARÉ PAR: <i>[Signature]</i>	AMOUNT DUE / MONTANT DÛ	
		NET DUE → IN CANADIAN \$ / FRAIS NET → EN \$ CANADIEN	<i>64996</i>
		EXCHANGE RATE / TAUX D'ÉCHANGE	
		REFUND RECEIVED BY / REMBOURSEMENT REÇU PAR	
		CASH REFUND / REMBOURSEMENT COMPTANT	

RENTER: PLEASE READ TERMS AND CONDITIONS ON PAGE 1 (REVERSE)
LOCATAIRE: VEUILLEZ LIRE LES CONDITIONS DE LA PAGE 1 (VERSO)

4. INVOICE FACTURE

ExL. 4.

Account With **CONSTRUCTION CO. LTD.** Phone 683-5277

BOX 2930

WHITEHORSE, YUKON

Sunset Mines,
c/o John Watson,
Fort Nelson, B.C.

Date... October 10, 1969

Invoice No... 74

D-7E @ \$35.00 /hour

101½ hours @ \$35.00/hour

3552.50

INVOICE AND STATEMENT

DOUG
Streeper
TRANSPORT LTD.

No 6699

BOX 207 PHONE 774-6657
FORT NELSON, B.C.

TO Sunset Mining Co.,
Fort Nelson, B.C.

DATE Oct. 25/69

P.O. No. .

LOCATION .

TICKET NUMBER	DESCRIPTION		TOTAL AMOUNT
14161	Oct. 21-24/69 Haul DoC cat and fuel trailer from mile 237 on Ross river road to Fort Nelson. 572 miles @ 1.50	858.00	
	Total this invoice		858.00
	Thank You		

E.H.S.

P. H. SEVENSMA CONSULTANTS LTD.

CONSULTING GEOLOGISTS
EXPLORATION & MINING

P.O. BOX 758
WHITEHORSE, Y. T.
PHONE: 667-2906

715-850 WEST HASTINGS ST.,
VANCOUVER 1, B.C.
PHONE 682-7155

INVOICE TO: Sunset Mining Corporation,
c/o Mr. John Matson,

Fort Nelson, B.C.

DATE: Sept. 26, 1969.

Period: June 1 - Sept. 26, 1969.

Re: Al - Kirk Group

Miscellaneous Services, 1 day	<u>\$150.00</u>	\$150.00
<u>Miscellaneous Disbursements (not previously charged)</u>		
May 16/69 - Long distance, P.H. Sevensma to Whse.	4.30	
May 17 - " " Whse. to Vancr. (682-7155)	8.25	
May 21 - " " Whse. to Vancr. (682-7155)	13.25	
May 27 - Long distance from Vancr. to Whse.	4.50	
Long distance service charge 10%	<u>3.03</u>	
		<u>33.33</u>
ACCOUNT RENDERED		<u><u>\$183.33</u></u>

P. H. SEVENSMA CONSULTANTS LTD.

CONSULTING GEOLOGISTS
EXPLORATION & MINING

P.O. BOX 758
WHITEHORSE, Y. T.
PHONE: 667-2906

715-850 WEST HASTINGS ST.,
VANCOUVER 1, B.C.
PHONE 682-7155

INVOICE TO: Sunset Mining Corporation Ltd.,
Box 860,
Ft. Nelson, B.C.

DATE: October 25, 1969.

Period: Sept. 27 - Oct. 15, 1969.

Attention: Mr. J. Matson

Re: Al - Kirk Group

<u>Services:</u>		
P.H. Sevensma, 2/3 day @ \$150.00 per day	\$100.00	
Property Geologist, 2 weeks @ \$400.00 per week	<u>800.00</u>	
		\$900.00
<u>Expenses:</u>		
Fare, Vancr. - Whitehorse & return	166.00	
Truck rental, 713 miles @ \$0.30	213.90	
Field and travel expenses	<u>46.70</u>	
		426.60
<u>Miscellaneous Disbursements:</u>		
Xeroxing to October 27 - 31 copies @ \$0.20	<u>6.20</u>	
		<u>6.20</u>
ACCOUNT RENDERED		<u><u>\$1,332.80</u></u>

Exh. 7.

P. H. SEVENSMA CONSULTANTS LTD.

CONSULTING GEOLOGISTS
EXPLORATION & MINING

P.O. BOX 758
WHITEHORSE, Y. T.
PHONE: 667-2906

715-850 WEST HASTINGS ST.,
VANCOUVER 1, B.C.
PHONE 682-7155

INVOICE TO: Sunset Mining Corp. Ltd.,
Box 3243,
Vancouver 3, B.C.

DATE: November 10th, 1969
PERIOD: Oct 16 - Nov 10, 1969

RE: A1 - Kirk-Fargo

Services :

P.H. Sevensma, 3-1/2 days @ \$150.00	\$ 525.00
Property Geologist-Zimmerman, 3 weeks @ \$400.00	1,200.00
Drafting Services 3 days @ \$50.00	<u>150.00</u>
	\$ 1,875.00

Expenses :

Oct. 28 Western Parcel Service - samples	3.75
C. Zimmerman-daily expenses Oct. 15-23	45.51
Oct. 16 C.P. Airlines ticket 430 229 651	160.00
Oct. 16 Company truck - 504 miles @ .30 per ml	157.20
Oct. 29 Coast Eldridge, order no. 9177	67.50
Oct. 31 Vancouver Geochemical Lab. Inv. # 69-0391	<u>46.00</u>
	480.76

Miscellaneous Disbursements :

Nov. 4 Riley's V #98636	1.18
Nov. 10 Xeroxing up to Nov 10th- 112 @ .20	22.40
Nov. 10 Riley's V #99054	<u>4.15</u>
	27.73

Weekend Typing Services - M. Warren	<u>24.00</u>
	\$ 2,407.49

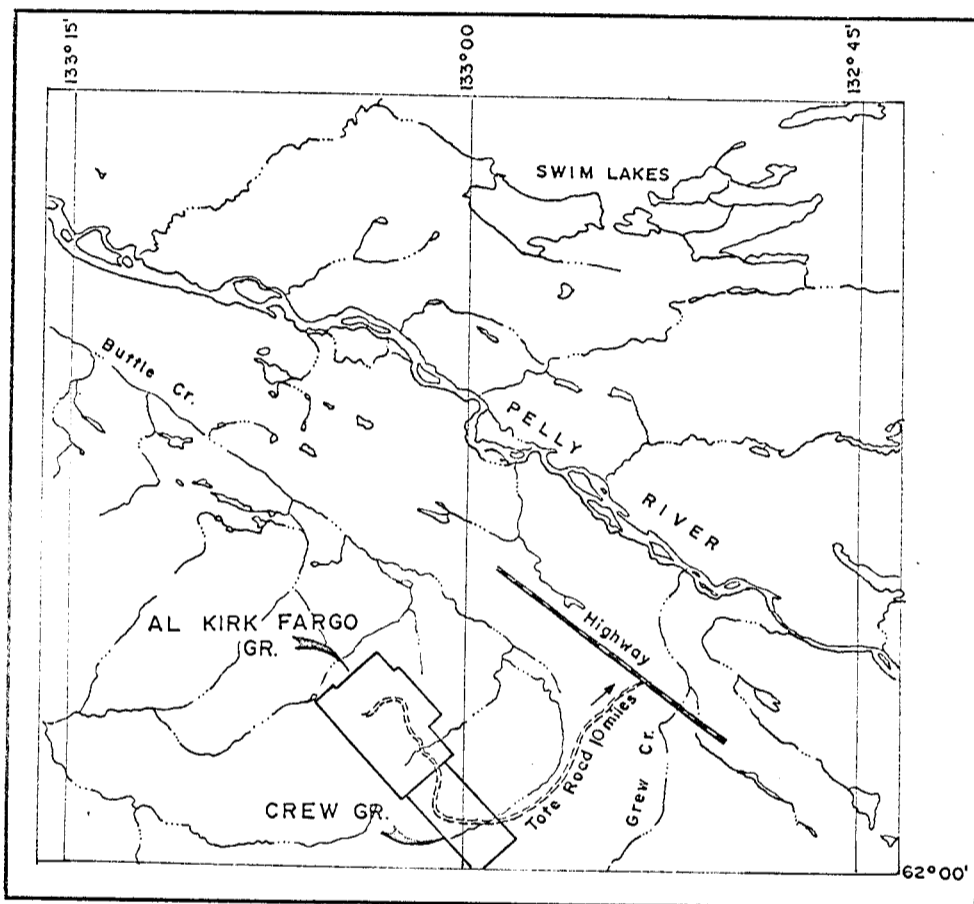
TERMS: 30 DAYS - 1% PER MONTH CHARGED ON OVERDUE ACCOUNTS

M Sunset Mining Corporation Ltd., Period: April 1 - Sept. 30.69.
c/o Mr. John Mattson,
Fort Nelson, B.C.

In account with P.H. Sevensma Consultants Ltd.,
715 - 850 W. Hastings St., Vancouver 1, B.C.

Terms STATEMENT re A1 - Kirk Group

DATE	DESCRIPTION	AMOUNT	BALANCE
June 12 1969	Invoice, Topo map	1382.65	
June 12	Filing assessment	<u>150.00</u>	
			1,532.65
	Interest 3 months @ 1%	30.00	
Sept. 26	Invoice, miscellaneous	<u>128.62</u>	
	ACCOUNT RENDERED		<u>1,721.27</u>
			<i>Ex. P.</i>



P. H. Sevensma

Exhibit 9

AL - FARGO - KIRK and CREW GROUP	
Tote Road Location	
Whitehorse M.D.—Y.T.	105-K-3
P. H. Sevensma Consultants Ltd. Vancouver, B.C.	
Dwg. No:	Fig:
Nov. 1969	Scale: 0 _____ 4 mile