

GEOCHEMICAL SURVEY

ON

NEW CLAIMS, CASINO AREA, YUKON TERRITORY

NEWMAR EXPLORATIONS LTD.

BY

W. R. NEWMAN, Ph. D., P. Eng.

AUGUST 15, 1970

VANCOUVER, B.C.

TABLE OF CONTENTS

	<u>Page</u>
Introduction	1
Claims	1
History	2
Topography	2
General Geology	2
Claim Staking	3
Geochemistry Surveys	3
Results	4
Copper	4
Molybdenum	4
Conclusions	4
Map 1 - New Claims, Whitehorse M.D., Yukon	
Map 2 - New Claims, Au Soil Geochemistry	
Map 3 - New Claims, Mo Soil Geochemistry	

GEOCHEMICAL SURVEY

ON

NEW CLAIMS, CASINO AREA, YUKON TERRITORY

NEWMAR EXPLORATIONS LTD.

INTRODUCTION

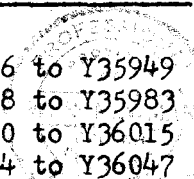
The Company owns 50 claims adjoining and to the north of the Casino Silver Mines Ltd. property on the headwaters of Canadian and Casino Creeks, 6 miles to the south of the Yukon River, 65 miles west of Carmacks and some 190 miles to the northwest of Whitehorse, Yukon Territory. The property is 2 miles north of the Casino ore-body.

A private air strip built by Casino is within 2 miles of the claim group. The strip is capable of handling planes up to the size of DC3's. Charter service is available from Great Northern Airways and Tintina Air Services in Whitehorse, where helicopters are also available for charter from the Casino air strip.

Claims

The 50 claims are numbered as follows:

<u>Claim</u>	<u>Registered Number</u>
New 1 to 4	Y35946 to Y35949
New 23 to 38	Y35968 to Y35983
New 55 to 70	Y36000 to Y36015
New 89 to 102	Y36034 to Y36047



History

The area has been explored on various occasions since 1911 for placer gold and tungsten and silver-lead veins. Between 1964 and 1967 extensive exploration was done on the silver-lead veins. During this period a copper-molybdenum zone was found. In 1968 a large zone, now reaching a dimension of 4,000 feet by 6,000 feet was outlined on Patton Hill, on the headwaters of Canadian and Casino creeks. A drilling program was initiated in 1969 and a porphyry copper type deposit was discovered. A large program of exploration and development on the ore deposit is continuing.

Topography

The claims are located in the Yukon Interior Plateau, an area of subdued topography, characterized by slopes covered with moss and peaty soil. Small spruce growth is found in creek valleys, along with buck brush. The ridges are open and sometimes crowned by castellated outcrops, usually granodiorites. There is a 2,500 foot difference in relief, but as a rule relief is seldom more than 1,500 feet. Outside of the castellated outcrops, the area is mostly covered with overburden. The Yukon River is the main drainage system in the region. Headwaters of Canadian Creek occur in the southwest corner of the property.

The climate is reported to be not as severe as in the more rugged areas of the Yukon.

General Geology

The region lies on the eastern flank of the Coast Range intrusives. There was no glaciation in the area during the Pleistocene. The main intrusive body is the Klotassin granodiorite, consisting of feldspar, quartz, hornblende and muscovite which in turn had been intruded by a younger quartz-monzonite porphyry of light green coloration.

The copper and molybdenum mineralization is associated with the porphyry intrusive.

The porphyry is considered to be similar to porphyry bodies of the southwestern United States, with mineralization, alteration and fracturing typical of porphyry copper deposits. Breccia pipes have been reported in the area.

Claim Staking

The New Claims 1 to 4 (Y35946 to Y35949) do not appear to exist as they have been apparently overstaked on New Claims 29 to 34. The remainder of the staked ground, appears to be reasonably accurate, as depicted on the accompanying maps.

Geochemistry Surveys

Two base-lines and 2 cross lines were surveyed by tape and compass traverses with numbered pickets set at 500 foot intervals. Soil samples were taken at 500 foot intervals by pace and compass traverses between picket lines on base lines and cross lines.

In soil-covered areas, samples were taken from the "B" horizon by digging through the overlying moss and humus material with a mattock grub-hoe. Samples from talus horizons had to be usually taken from the "C" horizon due to poor soil development.

The soil samples were bagged, dried, screened and analyzed for copper and molybdenum by Bondar-Clegg and Co. Ltd., of Whitehorse and North Vancouver, using the standard hot acid extraction method. Assays for copper and molybdenum in parts-per-million (ppm) were recorded and plotted on Maps 2 and 3. In addition, a soil map showing the nature of soil where samples were taken was also prepared.

Results

Copper

Background count for copper appears to average around 15 ppm. Some anomalous analyses were found in the 40 - 50 ppm range. On the New Claim 24 in the southeast corner, a sample contained 475 ppm of copper in an area where the samples had somewhat higher than background readings.

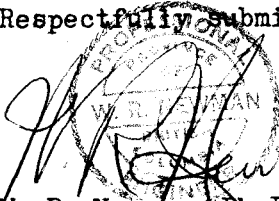
Molybdenum

Background count ranges from 1 to 3 ppm molybdenum. Only a few analyses in scattered samples were found which gave results ranging from 7 to 17 ppm of molybdenum.

Conclusions

Any future work would be dependent on results obtained in the neighboring Casino Mines ore-body. Some additional work in the form of trenching could be carried out on Claim 24 in this area where the high 475 ppm analysis for copper was obtained.

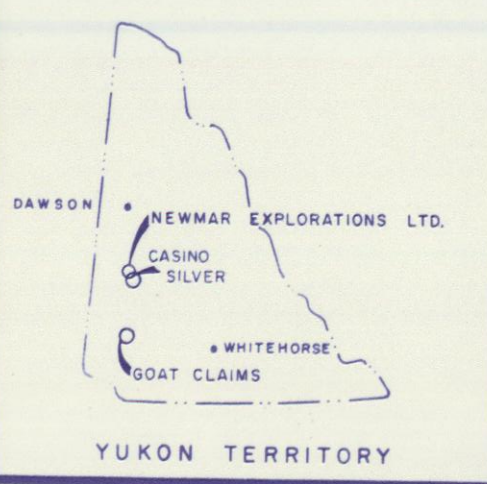
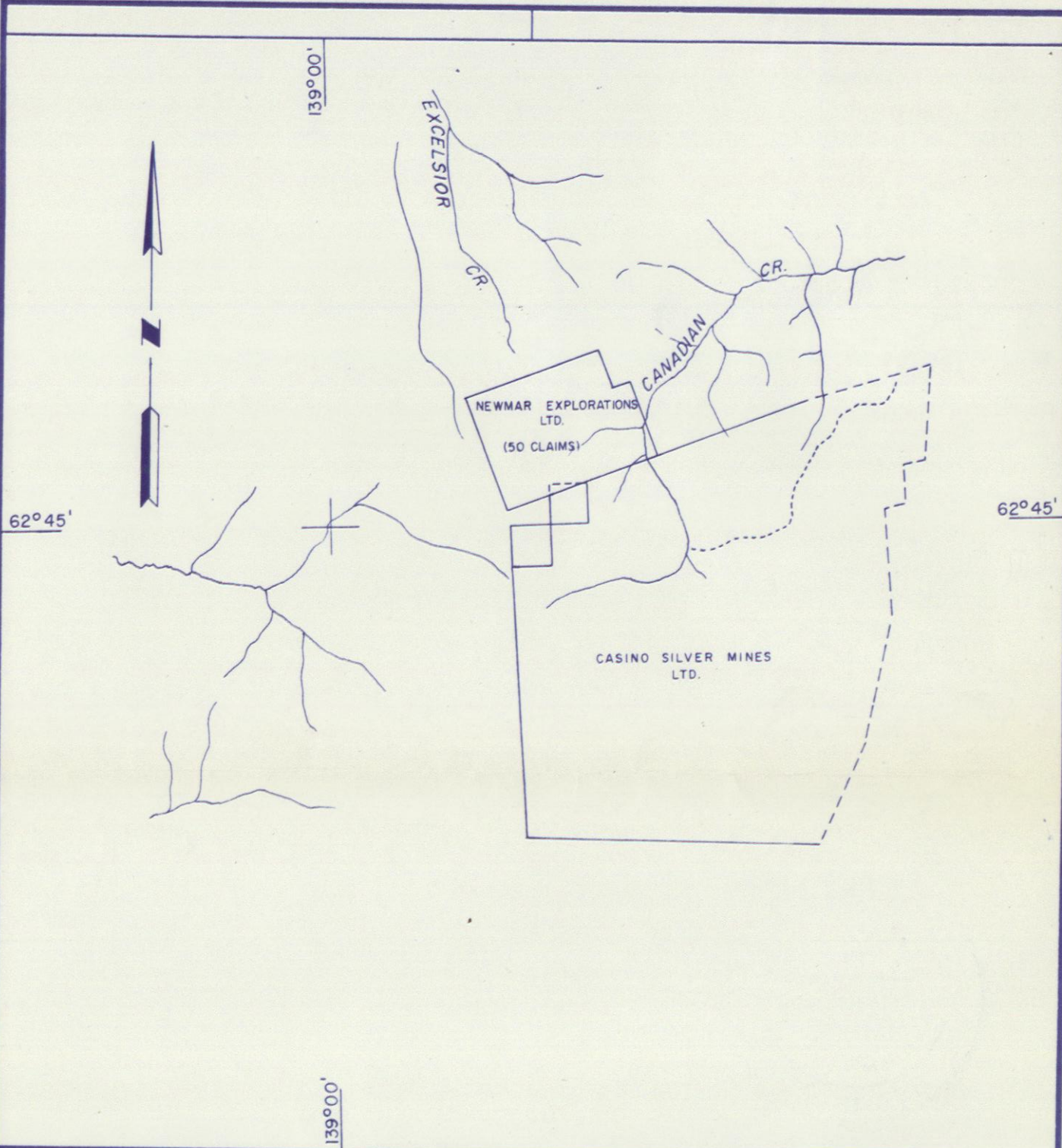
Respectfully Submitted,



W. R. Newman, Ph.D., P.Eng.

Vancouver, B.C.

August 15, 1970



NEWMAR EXPLORATIONS LTD.

LOCATION MAP

NEW CLAIMS

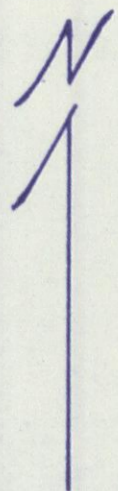
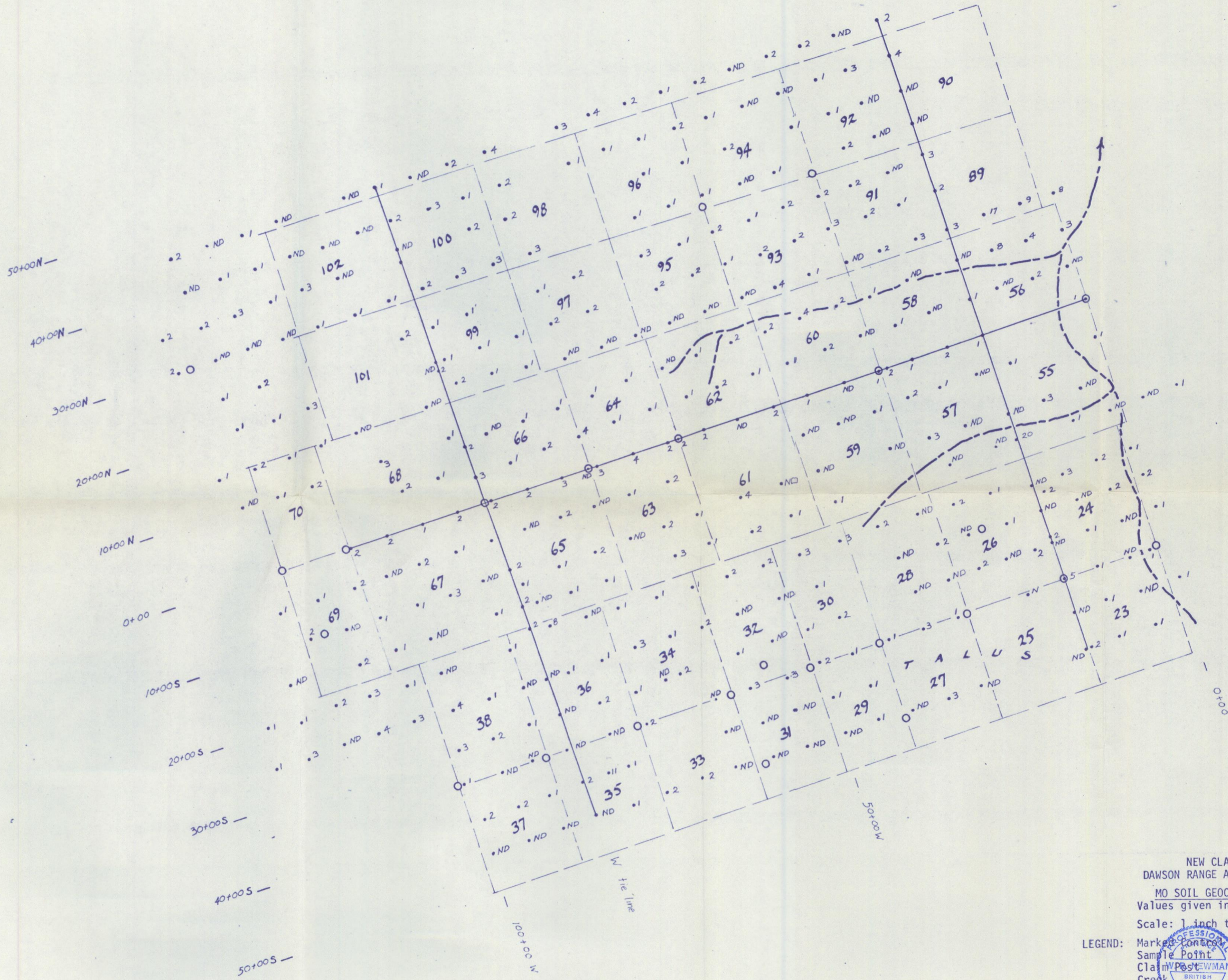
WHITEHORSE M.D. - YUKON TERRITORY

PROFESSIONAL
PROVINCE
OF
W. R. NEWMAN
BRITISH
ENGINEER

1/2 0 1/2

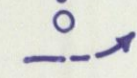
SCALE IN MILES

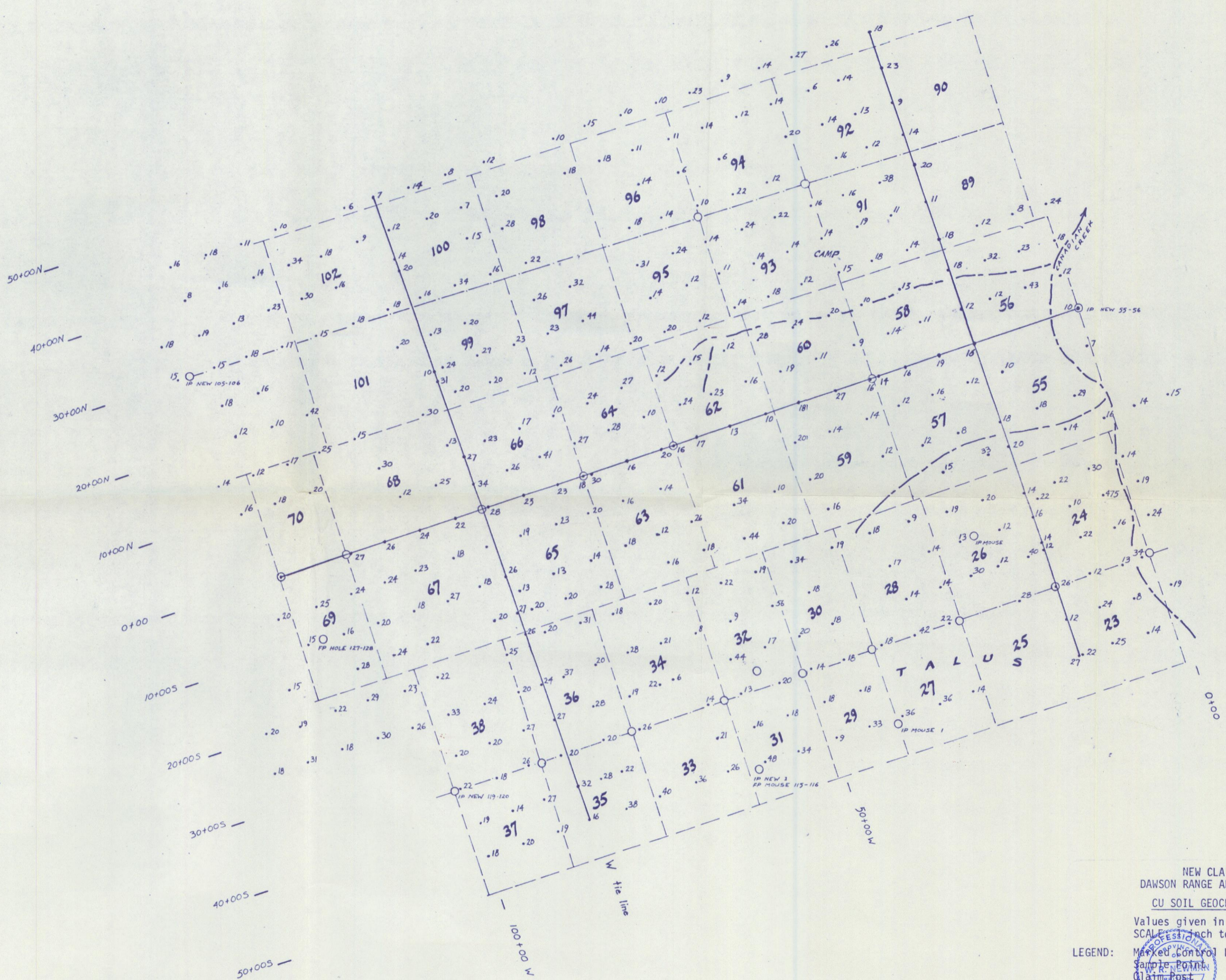
MAP
IA



NEW CLAIMS
 DAWSON RANGE AREA, YUKON
 MO SOIL GEOCHEMISTRY
 Values given in p.p.m. Mo.
 Scale: 1 inch to 1000 feet.

LEGEND: Marked Control Line
 Sample Point
 Claim Post
 Creek





NEW CLAIMS
 DAWSON RANGE AREA, YUKON
 CU SOIL GEOCHEMISTRY

Values given in p.p.m. Cu.
 SCALE 1 inch to 1000 feet.

LEGEND: Marked Control Line

Sample Point
 Claim Post
 Creek

