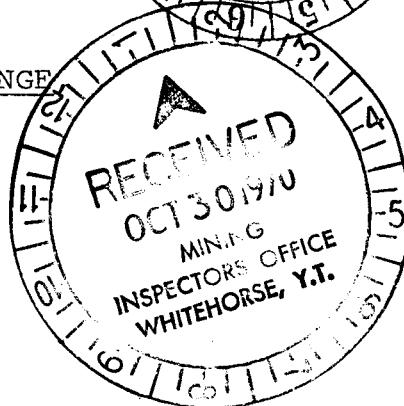


GEOCHEMICAL REPORT

ON THE BID GROUP

HOME CREEK AREA, DAWSON RANGE
YUKON TERRITORY

Longitude: 139°45'W
Latitude : 62°45'N



Claim Sheet - 115-J-13

This report has been examined by the Geological Evaluation Unit and is recommended to the Commissioner to be considered as representation work in the amount of

\$ 6,914.11

A handwritten signature in cursive script, appearing to read "D. Brabec".

~~Resident Mining Engineer~~

Considered as representation work under Section 53 (4) Yukon Quartz Mining Act.

By: Commissioner of Yukon Territory

D. BRABEC

ATLAS EXPLORATIONS LIMITED

August, 1970

TABLE OF CONTENTS

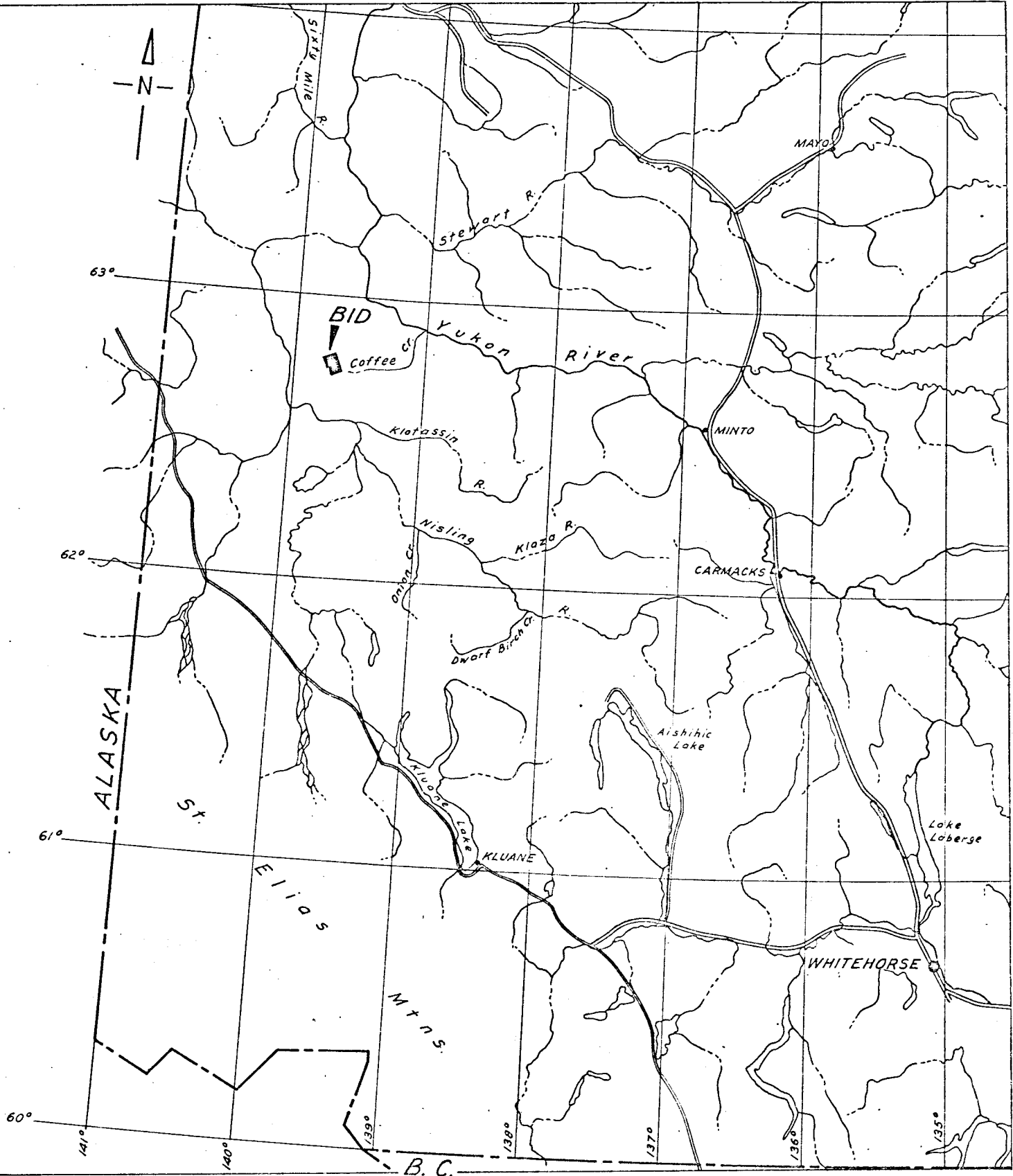
	<u>Page</u>
LIST OF CLAIMS	
LOCATION MAP	
INTRODUCTION	1
LOCATION AND ACCESS	3
REGIONAL GEOLOGY	3
GEOCHEMICAL SURVEY	6
(a) Sampling Techniques	6
(b) Analytical Methods	6
(c) Previous Geochemical Work.....	9
(d) Presentation of Data	9
INTERPRETATION OF RESULTS	10
CONCLUSIONS AND RECOMMENDATIONS	14
Appendix I List of Personnel	
Appendix II Summary of Costs	
Appendix III Vouchers	
Appendix IV Affidavit Supporting Summary of Costs	

Illustrations

Fig. 1	Bid Group Key Map	(Pocket)
Fig. 2	Bid Group Geologic Map	(Pocket)
Fig. 3	Cumulative Frequency Distribution) for Cu and Zn in Soil)
Fig. 4	Cumulative Frequency Distribution) for Pb in Soil) Following page 15
Fig. 5	Cumulative Frequency Distribution) for Cu in Rocks)
Fig. 6	Cumulative Frequency Distribution) for Zn in Rocks)
Fig. 7	Geochemical Silt and Rock Suveys	(Pocket)
Fig. 8	Geochemical Soil Survey- Grid 1	(Pocket)
Fig. 9	Distribution of Cu -Grid 1	(Pocket)
Fig. 10	Distribution of Lead -Grid 1	(Pocket)
Fig. 11	Distribution of Zinc -Grid 1	(Pocket)
Fig. 12	Geochemical Soil Survey- Grid 2	(Pocket)
Fig. 13	Distribution of Cu & Mo -Grid 2	(Pocket)
Fig. 14	Distriubtion of Pb & Zn -Grid 2	(Pocket)

LIST OF CLAIMS

<u>CLAIM NO.</u>	<u>GRANT NO.</u>	<u>RECORDING DATE</u>
BID 1-8	Y39119-Y39126	Oct. 27, 1969
9-16	Y39127-Y39134	Oct. 27, 1969
17-24	Y39135-Y39142	Oct. 27, 1969
25-32	Y39143-Y39150	Oct. 27, 1969
33-40	Y39151-Y39158	Oct. 27, 1969
41-48	Y39159-Y39166	Oct. 27, 1969
49-56	Y39167-Y31974	Oct. 27, 1969
57-64	Y39175-Y39182	Oct. 27, 1969
65-72	Y39183-Y39190	Oct. 27, 1969
73-80	Y39191-Y39198	Oct. 27, 1969
81-88	Y40431-Y40438	Nov. 26, 1969
89-96	Y40439-Y40446	Nov. 26, 1969
97-104	Y40447-Y40454	Nov. 26, 1969
105-112	Y40455-Y40462	Nov. 26, 1969
113-120	Y40463-Y40470	Nov. 26, 1969
121-128	Y40471-Y40478	Nov. 26, 1969
129-136	Y40479-Y40486	Nov. 26, 1969
137-144	Y40487-Y40494	Nov. 26, 1969
145-152	Y40495-Y40502	Nov. 26, 1969
153-160	Y40503-Y40510	Nov. 26, 1969
161-168	Y40511-Y40518	Nov. 26, 1969
169-176	Y40519-Y40526	Nov. 26, 1969
177-184	Y40527-Y40534	Nov. 26, 1969
185-192	Y40535-Y40542	Nov. 26, 1969
193-200	Y40543-Y40550	Nov. 26, 1969
201-208	Y40551-Y40558	Nov. 26, 1969
209-216	Y40559-Y40566	Nov. 26, 1969
217-220	Y40567-Y40570	Nov. 26, 1969
221-228	Y53638-Y53645	July 22, 1970
229-236	Y53646-Y53653	July 22, 1970



Scale: 1" = 32 miles

KEY MAP SHOWING
 BID CLAIM GROUP
 DAWSON RANGE - YUKON TERRITORY

ATLAS EXPLORATIONS LIMITED

330 MARINE BUILDING
355 BURRARD STREET
VANCOUVER 1, B.C.

GEOCHEMICAL REPORT ON THE BID GROUP

INTRODUCTION

The Home Creek area was examined by Atlas geologists Kenneth Dawson and Colin Godwin in the course of a reconnaissance of the Dawson Range in July, 1969. The Granodiorite batholith was seen to be intruded by fine-grained leucocratic granite stocks, often with miarolitic cavities and limonitic stains. Rhyolitic flows and dykes were noted in the area. Favourable geology led to reconnaissance mapping and geochemical sampling of the Home Creek area in August, 1969. Systematic mapping and geochemical sampling was undertaken in September and October, 1969. The first block of 80 BID mineral claims was staked in September, 1969, and the second block of 140 BID claims was staked in November, 1969, and the third block of 16 BID claims was staked in July, 1970, bringing the total to 236 claims.

Two grid areas were located on the basis of 1969 field work. Detailed work on the BID North (No. 1) Grid and South (No. 2) Grid including linecutting, geochemical sampling, magnetometer survey and geological mapping was done in the period May 28 - June 28, 1970.

The North grid was located on the basis of Mo. soil anomalies detected along both sides of Home Creek adjacent to a Home granite-Klotassin granodiorite contact. Silt and water geochemical anomalies were also detected in the area. Molybdenite veinlets in float were found on slopes south of Home Creek. Weak argillic alteration is developed locally in Home granite, and granodiorite shows propylitic alteration adjacent to Home granite contacts. An aeromagnetic high corresponds roughly with the area of interest.

The South Grid was located principally to cover a zone of pyrite-chalcopyrite-molybdenite veinlets in granodiorite along an east-west ridge south of Home Creek. The South Grid also extends eastward to include an altered contact zone between granodiorite and granite, with a few associated sulfide occurrences and soil geochemical anomalies.

Detailed geologic mapping, soil and rock chip sampling was done on both grids. The intervening area was mapped at 1"= 1000 ft.

An aeromagnetic anomaly on the western part of North Grid was surveyed with the Sharpe MF-1 magnetometer.

LOCATION AND ACCESS

The BID claims are in the Dawson Range in western Yukon, 10 miles northeast of the abandoned settlement of Donjek on the White River. Location of the claim group is given on Location Map. The claims are situated mainly in the southern headwaters of Home Creek, but also occupy headwaters of Hungry Creek and Tom Creek. About half the claims fall within the southern part of claim sheet 115-J-13 and the other half in the northern part of claim sheet 115-J-12. The claim group is depicted on Key Map (Fig. 1).

Access to the claims was attained by helicopter during 1969 and 1970. Men and supplies were flown by fixed-wing aircraft to the Yukon River, Uranus, Polaris and Casino airstrips, and then to the property by helicopter. An access road connecting Uranus and Polaris strips to Casino was used for servicing the airstrips.

REGIONAL GEOLOGY

The BID claims are located in the western Dawson Range, a northwest-trending belt of mountains 6000 ft. or more high, standing above the undulating surface of the Yukon Plateau.

Rocks underlying the claims include Klotassin granodiorite, Home granite, and related Tertiary flows and dykes.

The granitic to granodioritic Klotassin batholith constitutes the core of the Dawson Range in this area. South of BID group these Cretaceous and older intrusive rocks are covered by basic flows of the Early Tertiary Carmacks Volcanics, and intruded by related basic and ultrabasic plutons. Tertiary intrusive bodies, including Home granite, occur as small stocks, sills and dykes flanking and intruding the Klotassin batholith. Younger related rhyolitic and andesitic flows cap the older units in small disconnected patches.

Copper, molybdenum, lead and zinc mineralization is associated with both Tertiary and Cretaceous intrusive rocks in the vicinity of BID claims.

The BID claims are underlain predominantly by an irregularly-shaped body of fine to medium grained biotite granite (Home granite) that intrudes coarse grained hornblende granodiorite of the Klotassin batholith. Home granite comprises a body 2 miles by 3 miles in plan, elongated north-south and apparently forming the stock-like eastern extremity of a narrower eastward-trending body of granite. This pluton is the southernmost of a family of large sub-parallel sills that crop out on VINA claims to the north.

Rhyolite, dacite and andesite flows and pyroclastics crop out in a discontinuous northwest-trending belt immediately east and north of the claims. Two small rhyolite flows occur west of the claims.

Contacts between granite and granodiorite are sheared, brecciated, altered and mineralized. Home granite exhibits sporadic weak argillic alteration, whereas intruded granodiorite is more pervasively chloritized and epidotized. Small quartz-pyrite-molybdenite-chalcopyrite veins occur mainly in granodiorite adjacent to contacts with Home granite.

A geological map of BID claims, based upon mapping by Atlas geologists Kenneth Dawson, Donald Hersak and Gary Pearse is given in Figure 2.

Regional geologic data is drawn, in part, from Geological Survey of Canada Preliminary Map 44-34 and Map 340A.

GEOCHEMICAL SURVEY

(a) Sampling Techniques

The field part of the Geochemical Survey comprised the collecting of the following material:

- (1) 54 stream sediment samples of silt to sand texture collected mostly from smaller streams above confluences with major streams.
- (2) 826 soil samples taken from B-horizon every 200 ft. along northwesterly trending lines spaced at 800 ft. (Grid 1) or 1000 ft. (Grid 2). Soil sampling was carried out in two areas indicated as Grid 1 and Grid 2 (See Figure 7).
- (3) 167 rock chip samples taken either from outcrop or float at 1000 ft. intervals along soil lines over the Grid 1. Rock samples on Grid 2 were taken at selected sites both along the soil lines and along ridge crests.

All samples were sent to the Atlas Explorations laboratory in Whitehorse to be analyzed.

(b) Analytical Methods

After drying, all silt and soil samples were sieved to -80 mesh and the fines retained for analysis. Rock samples were crushed in a jaw crusher and then pulverized

in a grinder with steel plates. The resulting powder was reduced by quartering to a 20-30 g. working sample.

0.5 g. of each sample was digested with aqua regia, diluted to 10 mls. and allowed to settle. The concentrations of Cu, Pb and Zn in the solutions were determined with a Perkin-Elmer 303AA spectrophotometer. Molybdenum content in most samples was estimated colourimetrically by the thiocyanate-stannous chloride method using the iso-propyl ether for extraction of the coloured Mo complex. Interferences were often encountered in this test, particularly when analyzing soil, due to the organic matter extracted by the solvent along with the molybdenum complex. In an attempt to obtain more reliable data, a number of samples were analyzed for Mo at the Whitehorse Assay Office by AA spectrophotometry. Analytical reproducibility was controlled by including 1 soil sample selected as standard with every batch of 20 samples to be analyzed. Average precision derived from these replicates is given in Table 1.

TABLE 1
Average Analytical Precision for Selected Elements

		<u>No. of</u> <u>Replicates</u>	<u>Concentration</u> <u>Level (ppm)</u>	<u>Precision (%)</u>
Standard #1	Cu	57	15	40
	Pb	57	10	70
	Zn	57	70	40
Standard #2	Cu	3	300	7
	Pb	3	800	7
	Zn	3	170	3

Table 1 shows that the precision was relatively poor at low concentration levels, particularly in the case of lead. Determination of this metal by atomic absorption spectrophotometry is subject to interferences which significantly affect results over the lower concentration range. A failure of the hot plates which occurred during digestion seems to have caused some of the samples to be less completely digested which in turn lowered the overall reproducibility for all elements analyzed. However, it is believed that this effect was not so critical at higher concentrations, and that the contrast between the background and anomalous concentrations is still well expressed.

Mo precision is unknown due to the lack of suitable standard. However, due to the interferences in colourimetric determination, it would appear that considerable errors can be

expected at concentrations below 8 ppm. Mo.

Lower detection limit for all elements sought was 2 ppm.

(c) Previous Geochemical Work

Geochemical prospecting carried out over the greater claim group area in 1969 included silt sampling at selected sites, as well as soil and rock chip sampling along four claim lines and along ridge crests. Sampling interval varied from 200 - 500 ft. Results obtained are plotted on a $\frac{1}{4}$ mile to the inch map accompanying the Geological and Geochemical Report for 1969.

Anomolous areas found in the northwest and southwest parts of the claim group were investigated in detail this year by soil grids 1 and 2 respectively.

(d) Presentation of Data

Cumulative frequency plots used for estimating the anomaly thresholds for different elements in soil and rock are shown in Figures 3-6. Analytical results for silts and rocks are plotted on a 1000 ft. to the inch map (Figure 7). Results of the soil survey are plotted on a scale of 400 ft. to the inch (Figure 8 and Figure 12). Distribution of metals sought is shown by contouring on Figure 9 and Figures 11-14.

INTERPRETATION OF RESULTS

(a) Copper

Copper contents in soils range from 2-520 ppm, and probably belong to two populations roughly separated at 50 ppm Cu (Figure 3). This value can be taken as anomaly threshold for Bid Group soils.

Rocks were found to carry 2-143 ppm Cu. A prominent break in slope of the cumulative frequency curve, corresponding to 30 ppm Cu, indicates the presence of two populations of data. Therefore, it would appear that the anomaly threshold for Cu in rocks may be lower than that for soils.

The number of silts collected being insufficient for statistical treatment, the threshold for this material is assumed to be equal to that adopted for soils.

Cu values in silts are all lower than the adopted anomaly threshold of 50 ppm. (See Figure 7).

Cu content in soil on Grid 1 is low, with no values exceeding 50 ppm. and very few over 40 ppm. Zones outlined by contouring tend to be easterly oriented which may be due either to geological or topographical control (See Figure 2 and Figure 9)

Cu content in rocks on Grid 1 is generally very low.

Soils on Grid 2 are weakly anomalous in two zones which appear to be elongated toward east or northeast. One of them may be about 1500 ft. long and up to 1200 ft. wide. It occurs in a general area of altered rocks.

(b) Lead

Lead content of soil ranges from 2-280 ppm with more than 80% of values below 20 ppm. The latter value seems to indicate the upper limit of background range (See the Cumulative Frequency Plot, Figure 10).

Lead in rocks appears to be generally lower than in soils, more than 90% of values being lower than 10 ppm.

Only two silt samples were found to be slightly anomalous in Pb.

Several highly anomalous Pb values were found in soil on Grid 1. One anomalous area with a 200 ppm peak occurs in the middle of claim group. It is partly coincident with a Zn anomaly (Figure 10 and Figure 11).

No Pb high rocks were found in this zone. Enrichment of Pb in soil relative to rock is likely to be due to concentration of lead in the organic fraction of soil.

Weak lead anomalies on Grid 2 form several northeasterly elongated belts. An isolated high of 160 ppm occurs at the eastern margin of the area.

(c) Zinc

Zinc contents of soils vary from 9-720 ppm, with over 80% of values lower than 80 ppm. The cumulative frequency curve indicates the presence of 2 or possibly 3 populations of data (See Figure 6). Value of 100 ppm was taken as anomaly threshold for both soils and silts. The cumulative frequency plot for Zn in rocks indicates that 100 ppm can be taken as threshold in this material too.

Silt samples do not show any strong Zn anomaly. Several slightly anomalous values are not believed to reflect the presence of significant mineralization.

Geographic distribution of values in soil over Grid 1 indicates several scattered low-contrast anomalies (Figure 11). They are elongated in northeasterly direction, and if continuity between lines is assumed, some of them may be up to 1600 ft. long. It is not considered that these anomalies reflect any significant mineralization.

Weak Zn anomalies on Grid 2 are also elongated in northeasterly direction and mostly coincide with Pb anomalies (Figure 14).

(d) Molybdenum

Molybdenum values on Grid 1 are mostly below the detection limit (indicated as '0' on geochemical maps).

Relatively high Mo values were encountered in several zones on Grid 2 (See Figure 13). The strongest anomaly, with values as high as 50-60 ppm, is about 2500 ft. long on line 3W. The westward extent of this zone is unknown. The highest samples were re-analyzed using hot HNO_3 digestion followed by estimation of Mo content with an atomic absorption spectrophotometer. Anomaly was confirmed, although the values were much lower than those obtained from colourimetric analysis. However, if relatively high threshold is adopted in view of interferences in colourimetric determinations, AA determinations confirm a high anomaly contrast of about 8.

The zone highest in Mo is adjacent to a Cu anomaly. Mo anomalies in the centre of the area, which extend over considerable area, also partly coincide with a relatively high copper zone.

(e) Comparison with Previous Results

A comparison of geochemical values obtained in 1969 with present data shows the following:

1. Cu and Mo anomalies in the southwest part of the group (Grid 2) are generally confirmed.

2. Mo anomalies in the north part of the group (Grid 1) are not confirmed. Zn results in this zone appear to be generally lower compared to the previous ones.

It is not known which technique of sample decomposition was used when analyzing the last year's samples. Results obtained even on same samples after different analytical procedure often show considerable discrepancies. Mo is particularly critical in that respect because of its relatively low background in geological materials and also because solubility of molybdenite markedly depends on the technique of sample decomposition.

It should also be noted that most soil samples in the main areas of interest were taken along slope and ridge traverses so that they generally do not coincide with soil sampling traverses laid on in 1970 soil survey.

CONCLUSIONS AND RECOMMENDATIONS

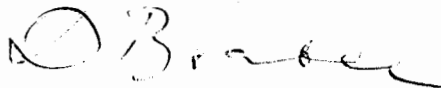
Magnitude and geographic distribution of anomalous values on Grid 1 probably reflects only sporadic and sub-economic mineralization. However, strong Mo anomalies, coupled with some Cu highs on Grid 2, may reflect the presence of economic mineralization and deserve further work.

It should be noted that Cu and Mo mineralization was observed within the anomalous area (See Geologic Map,

Figure 2). The suggested follow-up should include the following:

1. A detailed survey of drainages over the area adjoining the Grid 2 to the west. This work should include sampling of stream sediments combined with sampling of water from springs and seepages.
2. Soil sampling of Mo-Cu anomalous areas along additional traverses situated between existing ones to obtain a 500 ft. by 200 ft. grid. Grid 1 should also be extended westward for at least 2000 ft.
3. Pitting to bedrock at selected sites within anomalous zones to observe depth variations of Cu and Mo.

Respectfully submitted,



D. Brabec,
Geochemist

September, 1970.



99.99 99.9 99.8 99.5 99 98 95 90 80 70 60 50 40 30 20 10 5 2 1 0.5 0.2 0.1 0.05 0.01

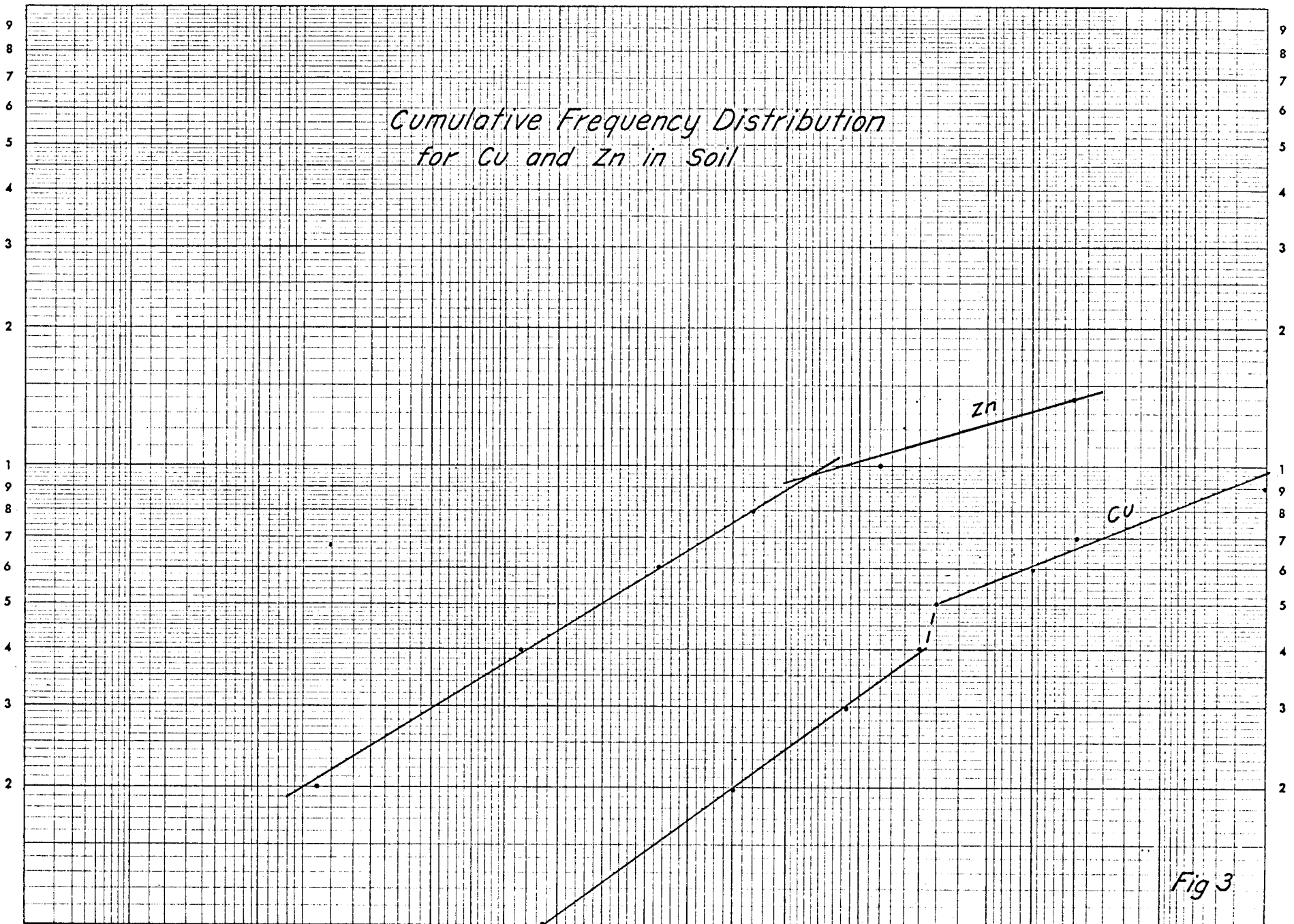


Fig 3

0.01 0.05 0.1 0.2 0.5 1 2 5 10 20 30 40 50 60 70 80 90 95 98 99 99.5 99.8 99.9 99.99

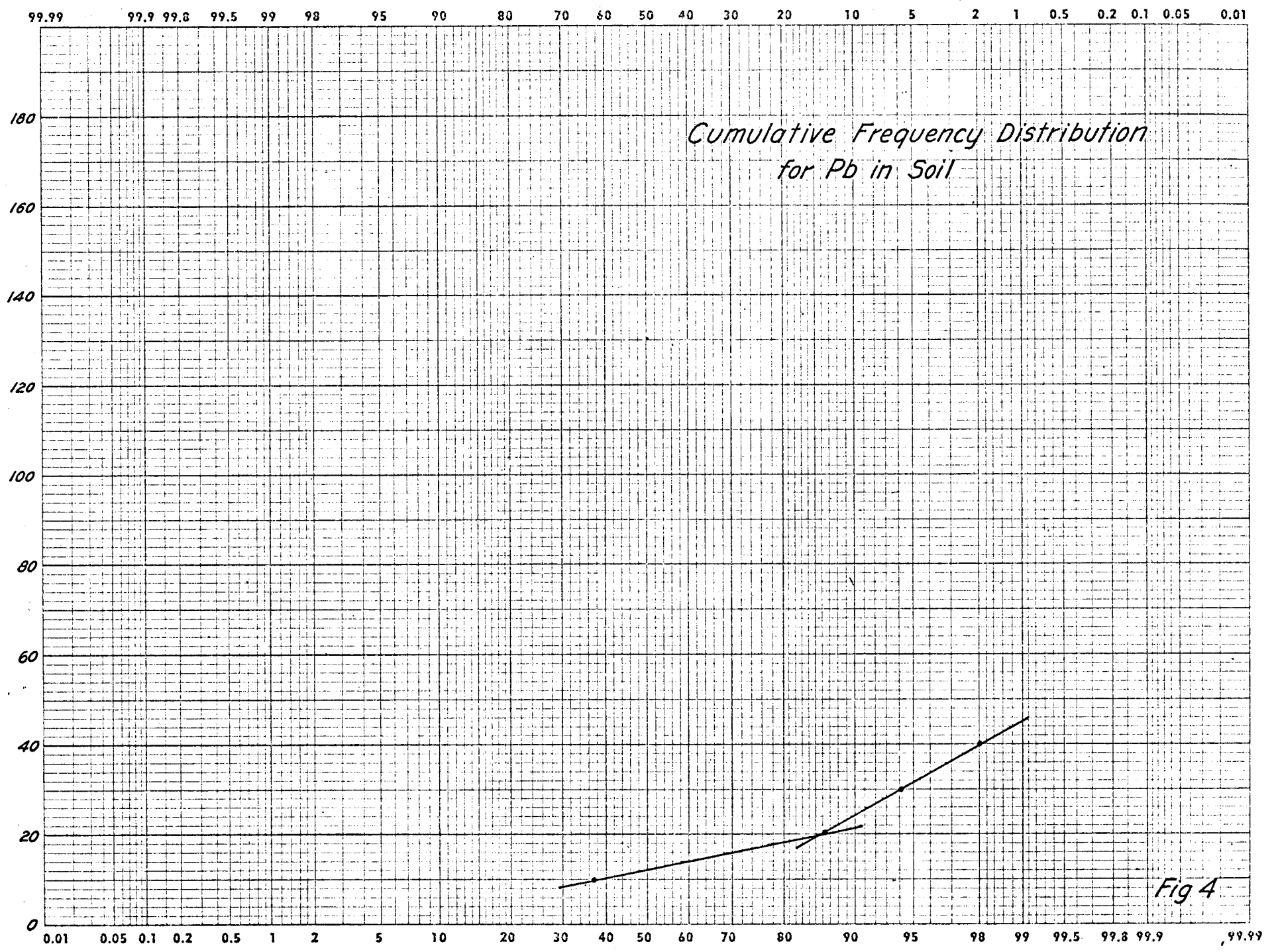


Fig 4

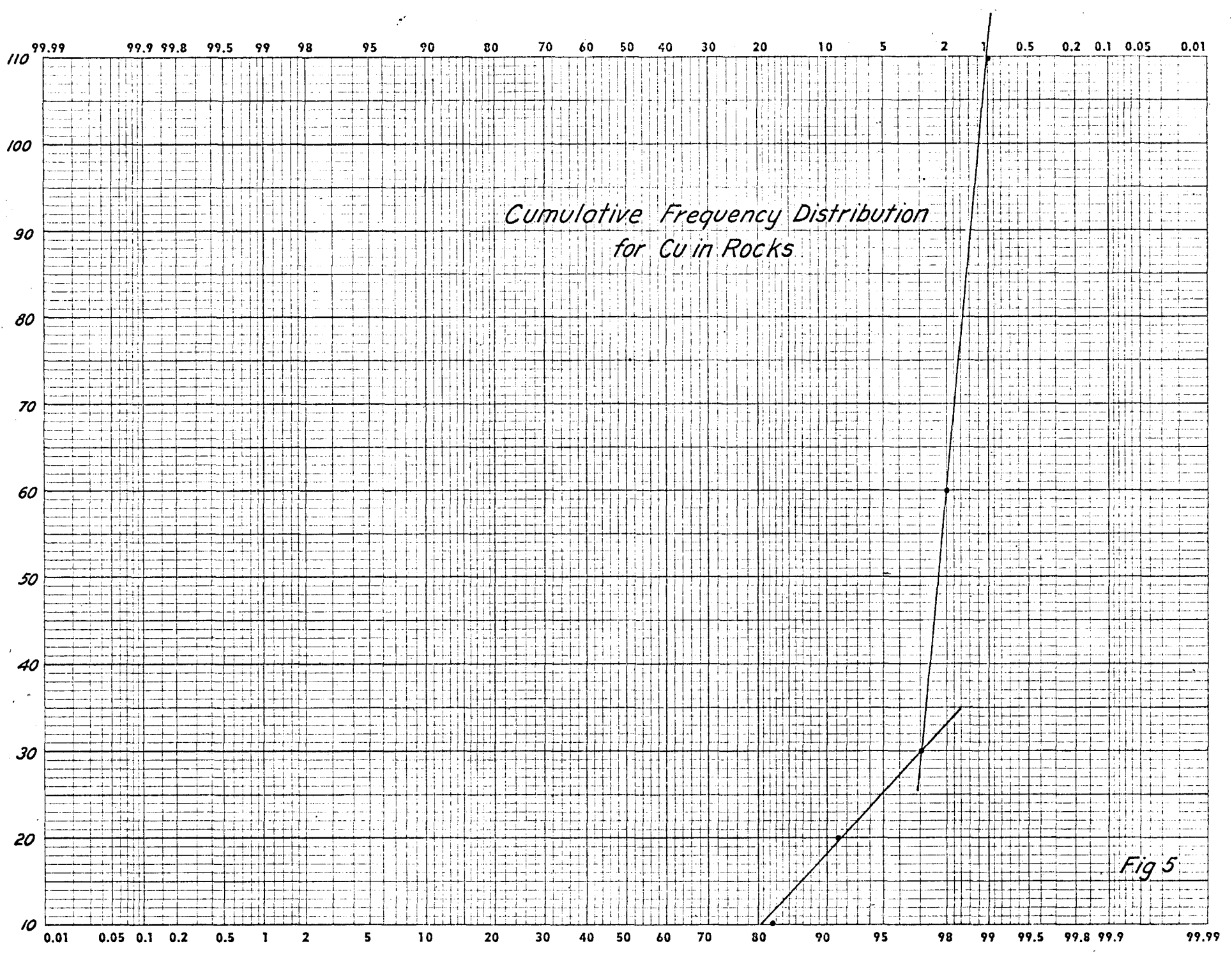


Fig 5

99.99 99.9 99.8 99.5 99 98 95 90 80 70 60 50 40 30 20 10 5 2 1 0.5 0.2 0.1 0.05 0.01

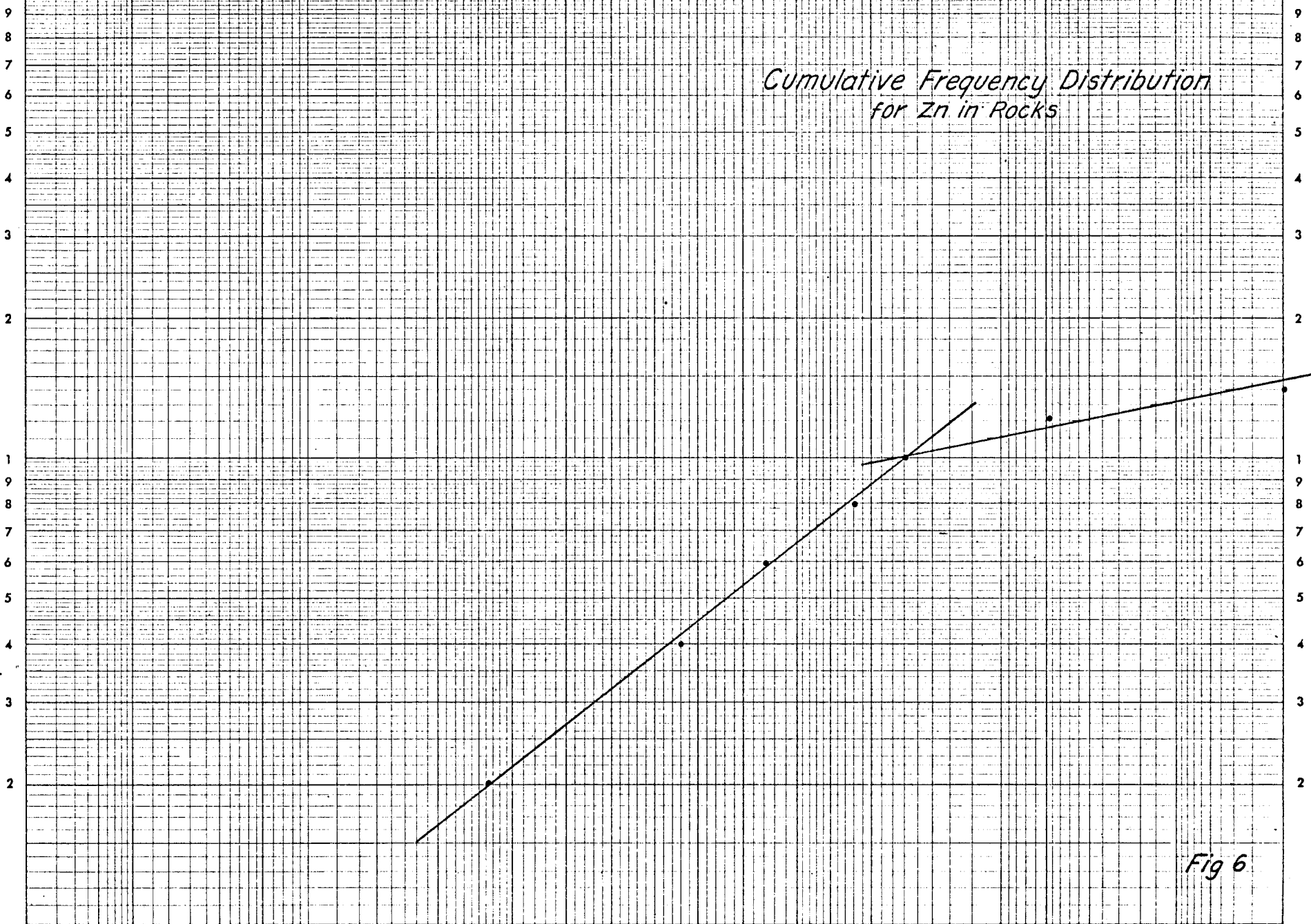


Fig 6

0.01 0.05 0.1 0.2 0.5 1 2 5 10 20 30 40 50 60 70 80 90 95 98 99 99.5 99.8 99.9 99.99

LIST OF PERSONNEL

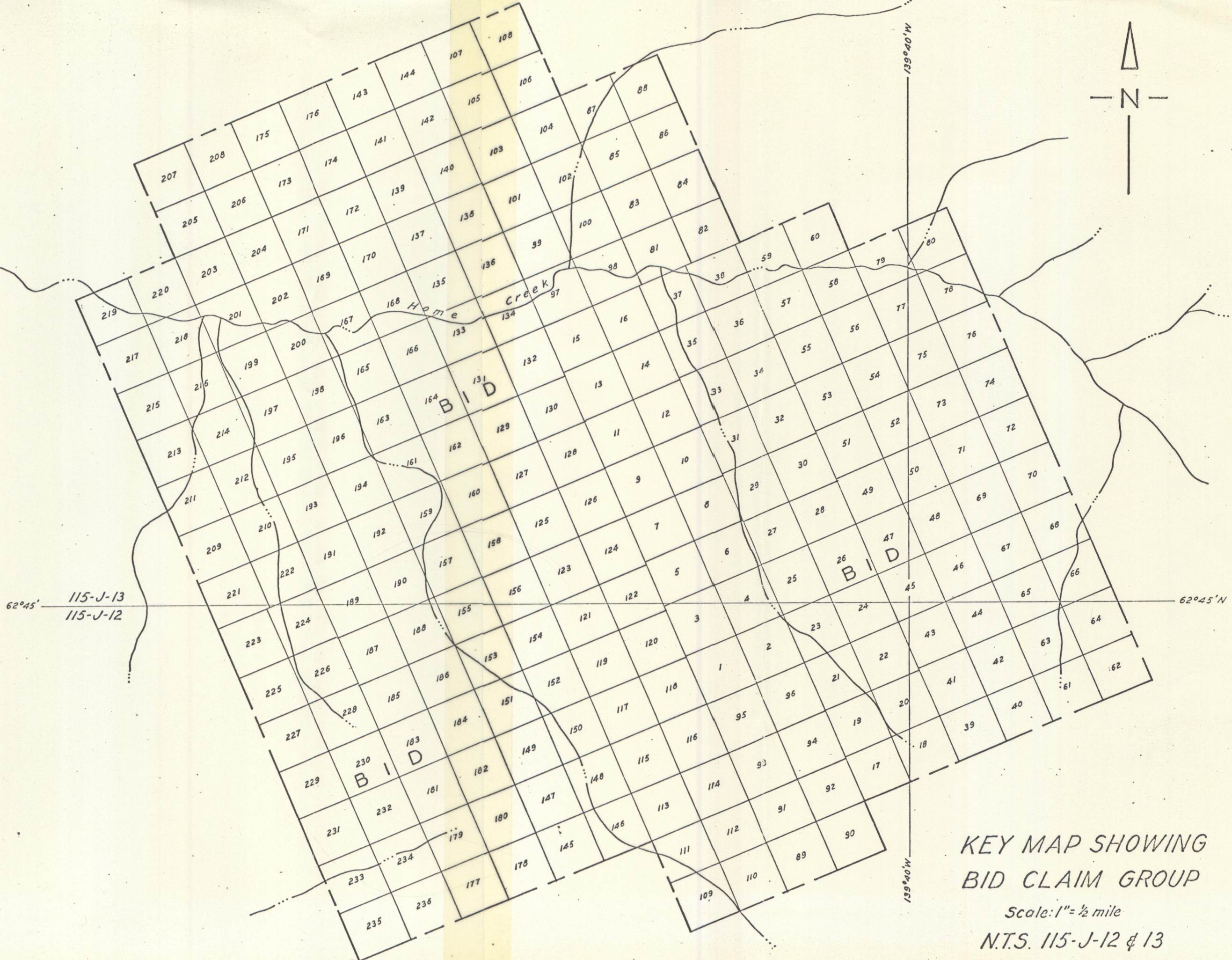
D. Brabec	Geochemist	Vancouver, B.C.
P. Dean	Party Chief	Vancouver, B.C.
K. M. Dawson	Geologist	Vancouver, B.C.
J. S. Brock	Geophysicist, Vice-Pres.	Vancouver, B.C.
G.H.K. Pearse	Geologist	Vancouver, B.C.
T. Adamson	Geologist	Vancouver, B.C.
J. Britton	Sampler	Vancouver, B.C.
T. Brock	Sampler	Vancouver, B.C.
G. Cummings	Sampler	Whitehorse, Y.T.
C. Ollie	Sampler	Ross River, Y.T.
K. Butler	Cook	Whitehorse, Y.T.
H. G. Templeman	Draftsman	Vancouver, B.C.

SUMMARY OF COSTS
BID CLAIM GROUP GEOCHEMICAL SURVEY

Wages - General	(Schedule "E")	\$ 912.50
- Report Writing	(Schedule "G")	58.67
- Report Writing	(Schedule "H")	250.96
Helicopter Support	(Schedule "D")	1,265.51
Fixed-Wing	(Schedule "D")	240.28
Assay	(Schedule "C")	2,151.90
Supplies	(Schedule "D")	132.60
	(Schedule "F")	563.79
Camp Support	(Schedule "B")	526.84
Expediting	(Schedule "A")	<u>182.80</u>
		\$ 6,285.55
Head Office Administration - 10%		<u>628.56</u>
	GRAND TOTAL	\$ 6,914.11

Total cost of geochemical survey to be applied as representation work is \$6,914.11.

Supporting vouchers are given in Appendix IV of accompanying "Bid Mineral Claims Group - Report on Geological Mapping".



KEY MAP SHOWING
BID CLAIM GROUP

Scale: 1" = 1/2 mile

N.T.S. 115-J-12 & 13



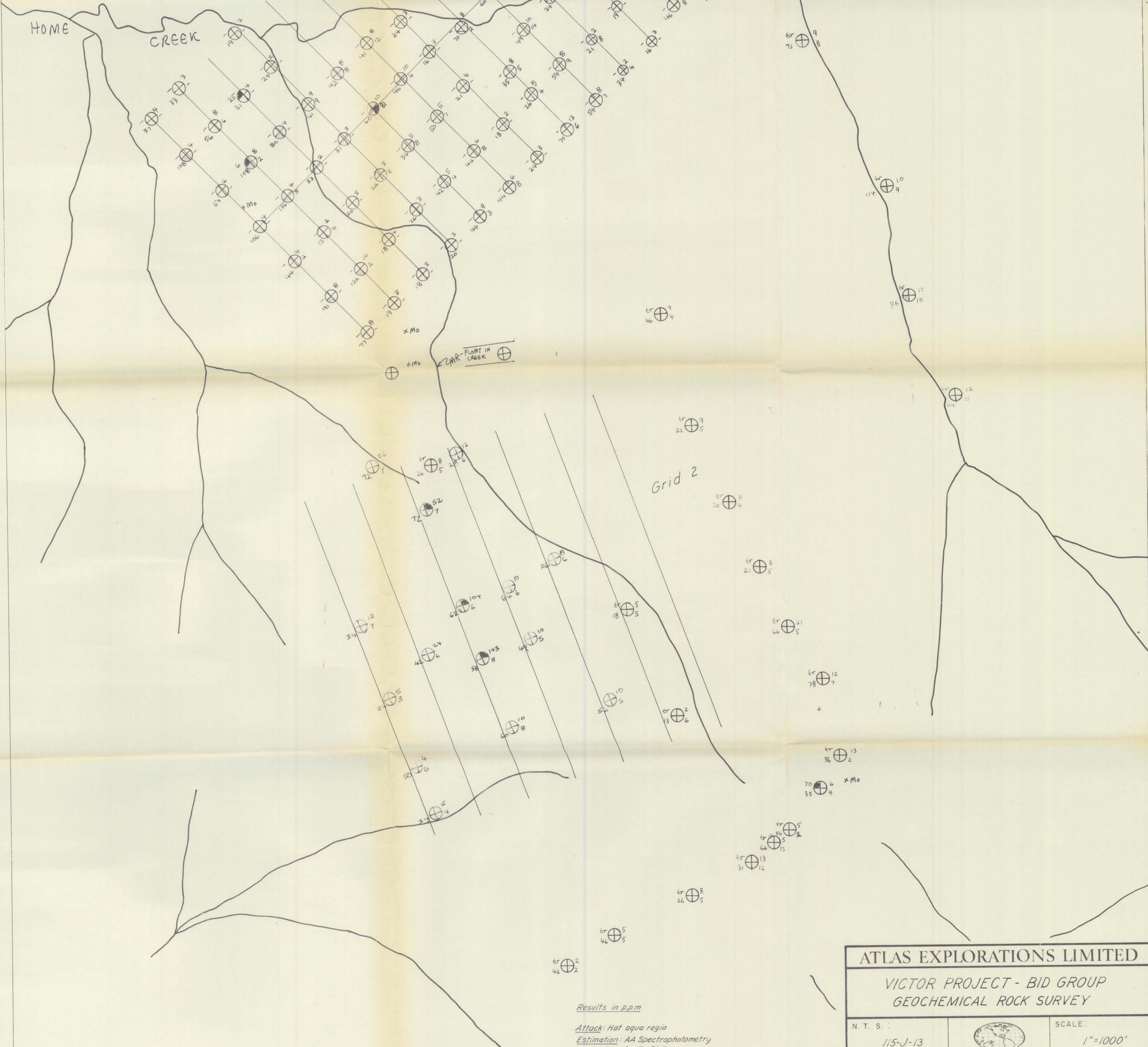
BID CLAIMS GEOCHEM
ROCK SAMPLES

Copper, Lead, Zinc, Molybdenum.

Mo Cu
Zn Pb


P. DEAN June 1970

Scale: 1" = 1000 FT



Results in ppm

Attack: Hot aqua regia
Estimation: AA Spectrophotometry
for Cu, Pb, Zn
Thiocyanate colorimetry for Mo

ATLAS EXPLORATIONS LIMITED			
VICTOR PROJECT - BID GROUP GEOCHEMICAL ROCK SURVEY			
N. T. S.:		SCALE: 1" = 1000'	
115-J-13			
DATE OF SURVEY: June 1970	PARTY CHIEF: P. Dean		
DATE DRAFTED: June 1970	DRAFTED BY: P. Dean		
DATE REVISED:	REVISED BY:		
CHECKED BY:	FIGURE No.:		

BID CLAIMS GEOCHEM
SILT SAMPLES

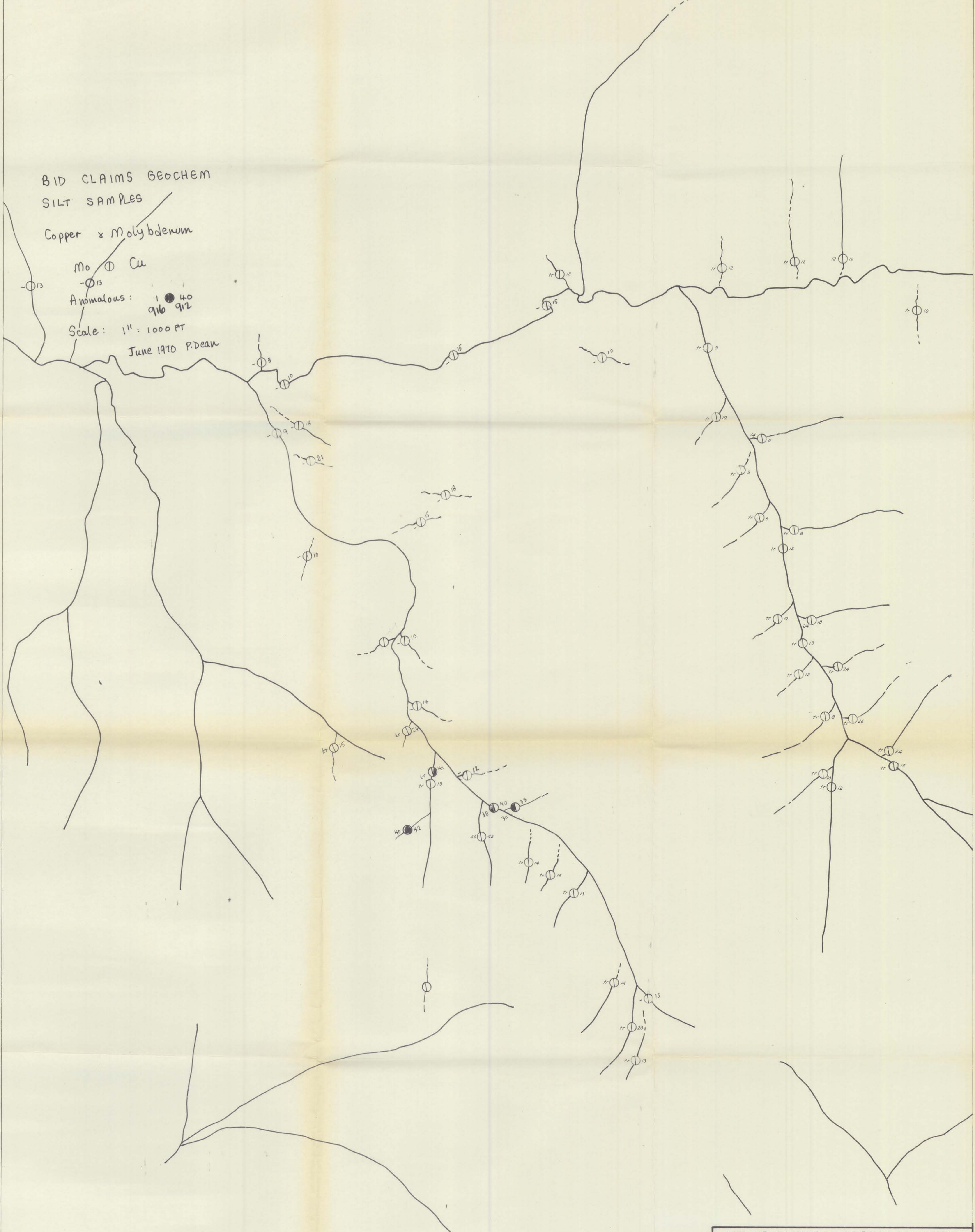
Copper & Molybdenum


Mo ⊕ Cu

Anomalous: 1 ● 40
916 912

Scale: 1" = 1000 FT

June 1970 P. Dean



ATLAS EXPLORATIONS LIMITED			
VICTOR PROJECT - BID GROUP GEOCHEMICAL SILT SURVEY			
N. T. S.:		SCALE:	
115-J-13		1" = 1000'	
DATE OF SURVEY: June 1970	PARTY CHIEF: P. Dean		
DATE DRAFTED: June 1970	DRAFTED BY: P. Dean		
DATE REVISED:	REVISED BY:		
CHECKED BY:	FIGURE No.:		

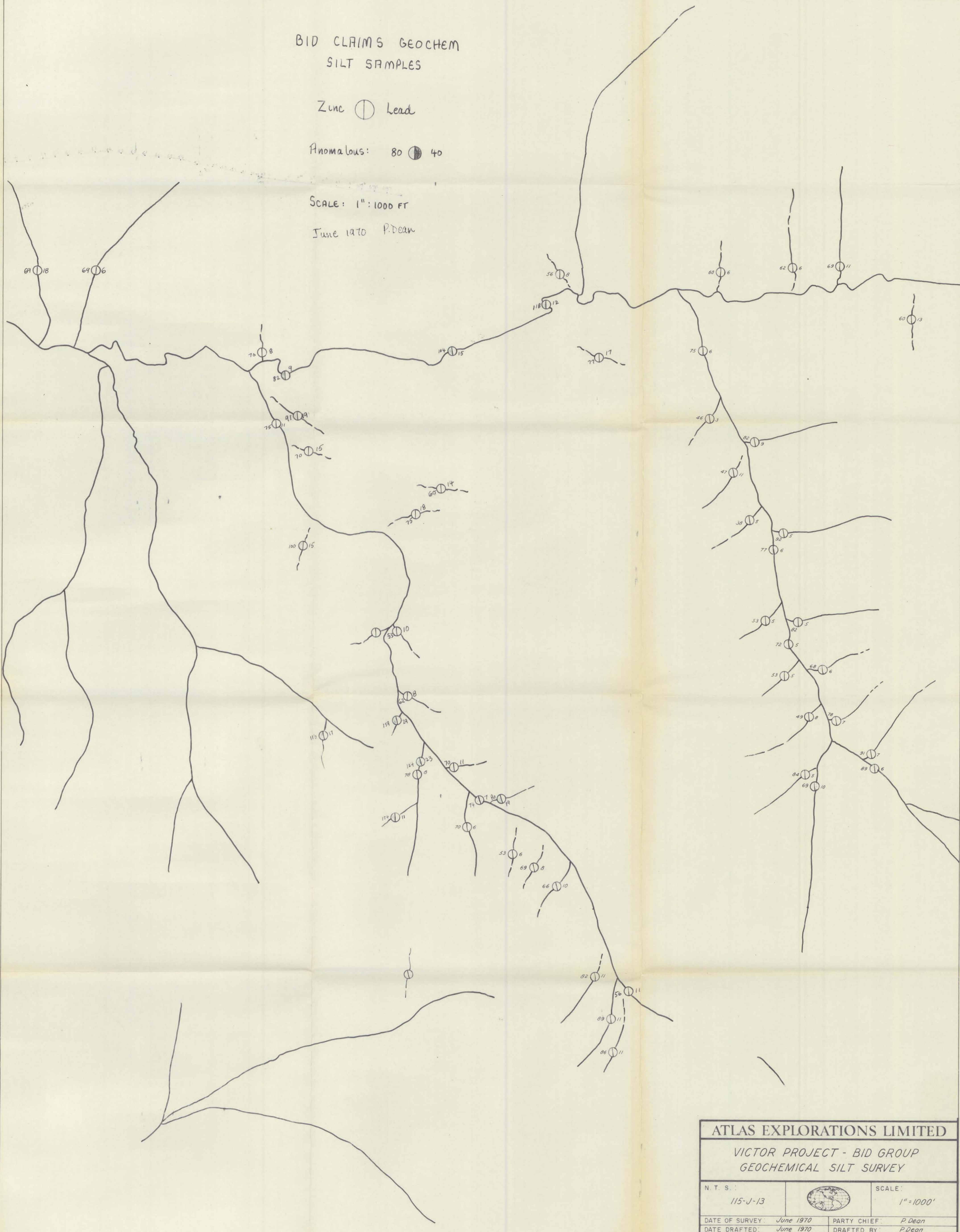
BID CLAIMS GEOCHEM
SILT SAMPLES


Zinc \bigcirc Lead

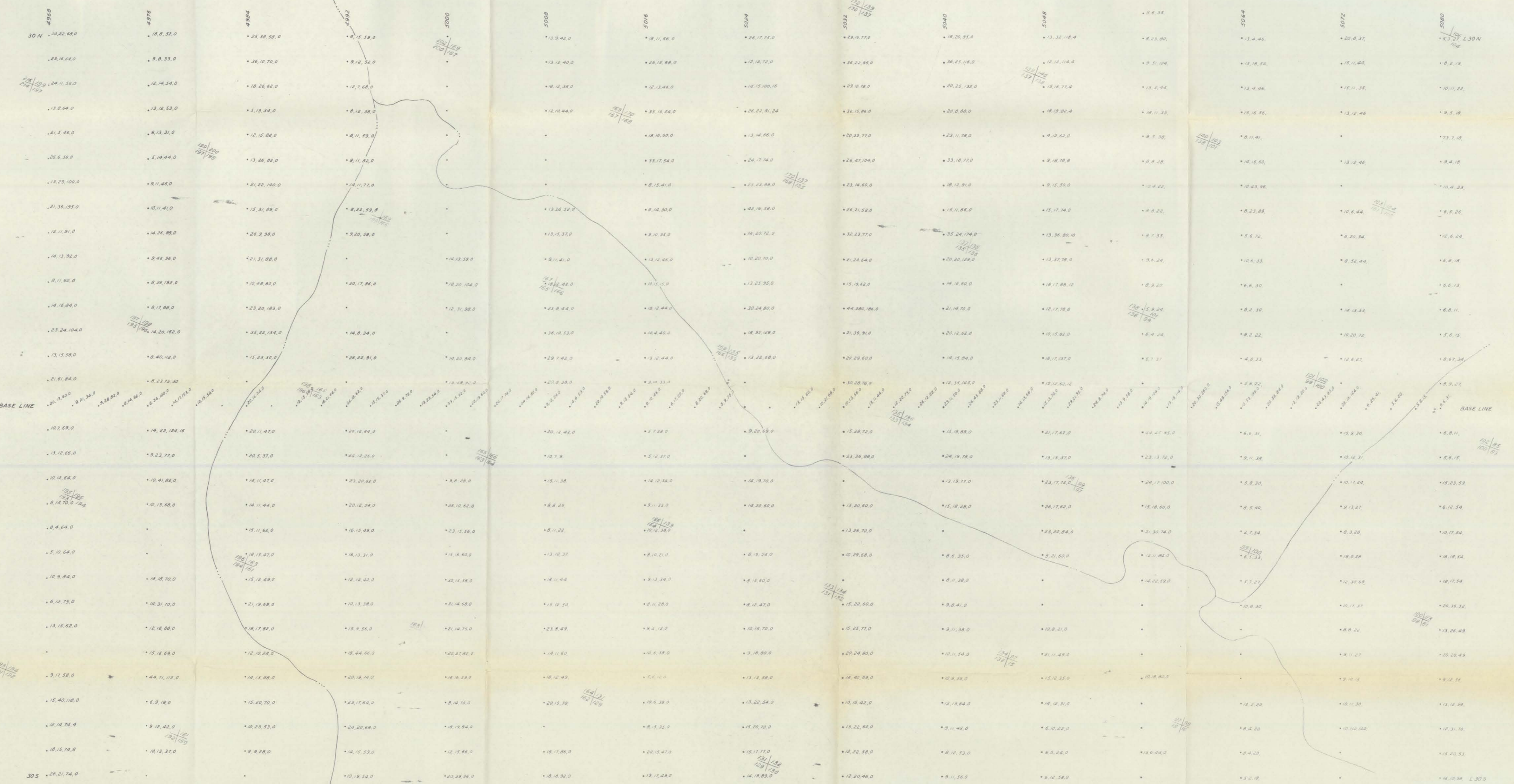
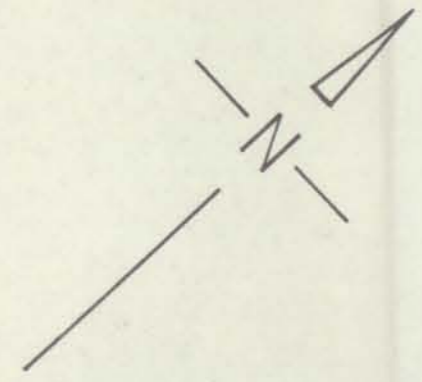
Anomalous: 80 \bullet 40

SCALE: 1" = 1000 FT

June 1970 P. Dean




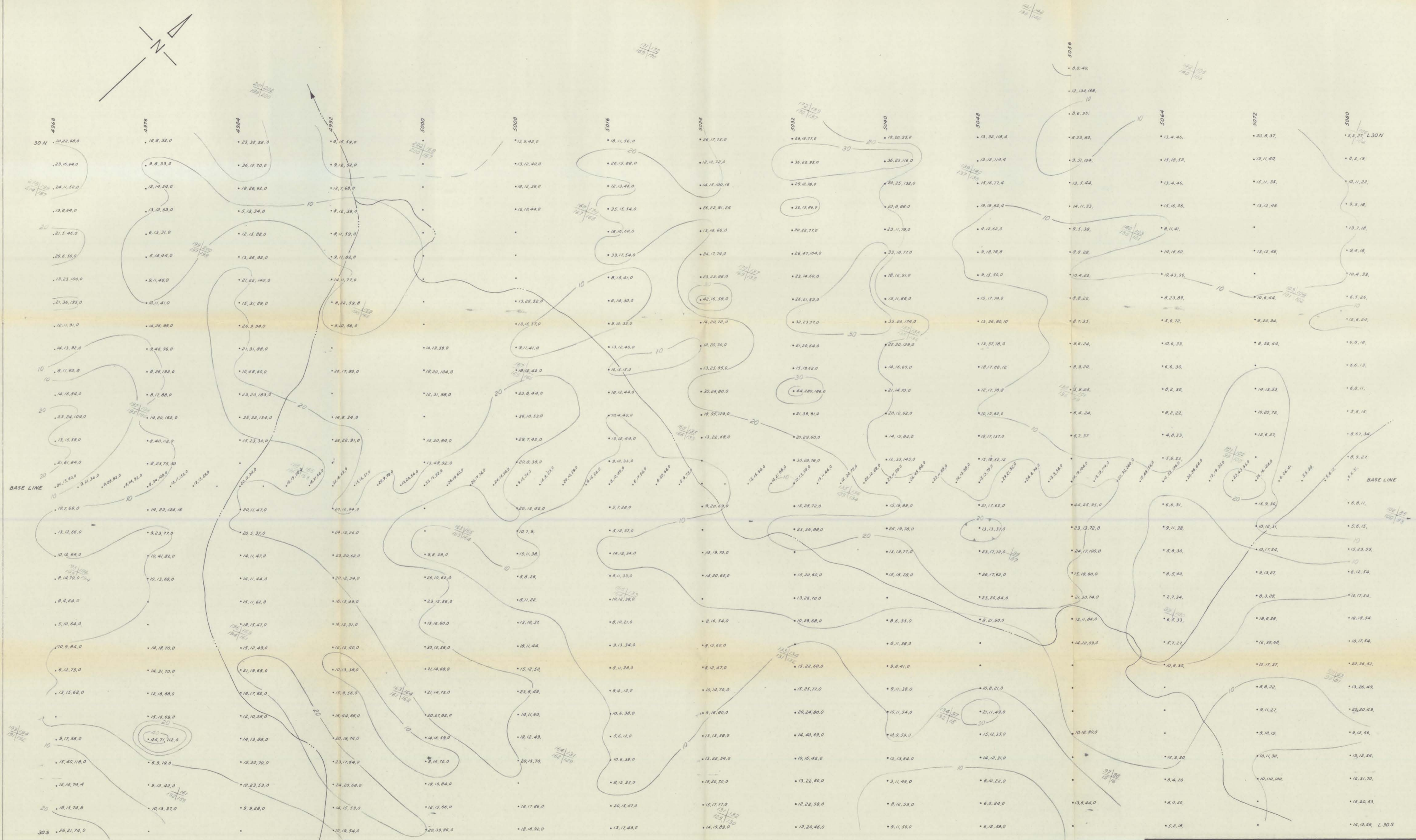
ATLAS EXPLORATIONS LIMITED		
VICTOR PROJECT - BID GROUP GEOCHEMICAL SILT SURVEY		
N. T. S. 115-J-13		SCALE: 1" = 1000'
DATE OF SURVEY: June 1970	PARTY CHIEF: P. Dean	
DATE DRAFTED: June 1970	DRAFTED BY: P. Dean	
DATE REVISED:	REVISED BY:	
CHECKED BY:	FIGURE No.:	



Results in ppm. - 15, 10, 50, 2
 Cu, Pb, Zn, Mo
 Attack: Hot aqua regia
 Estimation: AA Spectrophotometry
 for Cu, Pb, Zn
 Thiocyanate colorimetry for Mo

Grid 1

ATLAS EXPLORATIONS LIMITED			
VICTOR PROJECT - BID GROUP GEOCHEMICAL VALUES MAP			
N. T. S.:		SCALE:	
115-J-13		1" = 400'	
DATE OF SURVEY: June 1970	PARTY CHIEF: P. Dean	DATE DRAFTED: " "	DRAFTED BY: G.T.
DATE REVISED: " "	REVISED BY:	CHECKED BY:	FIGURE No.:

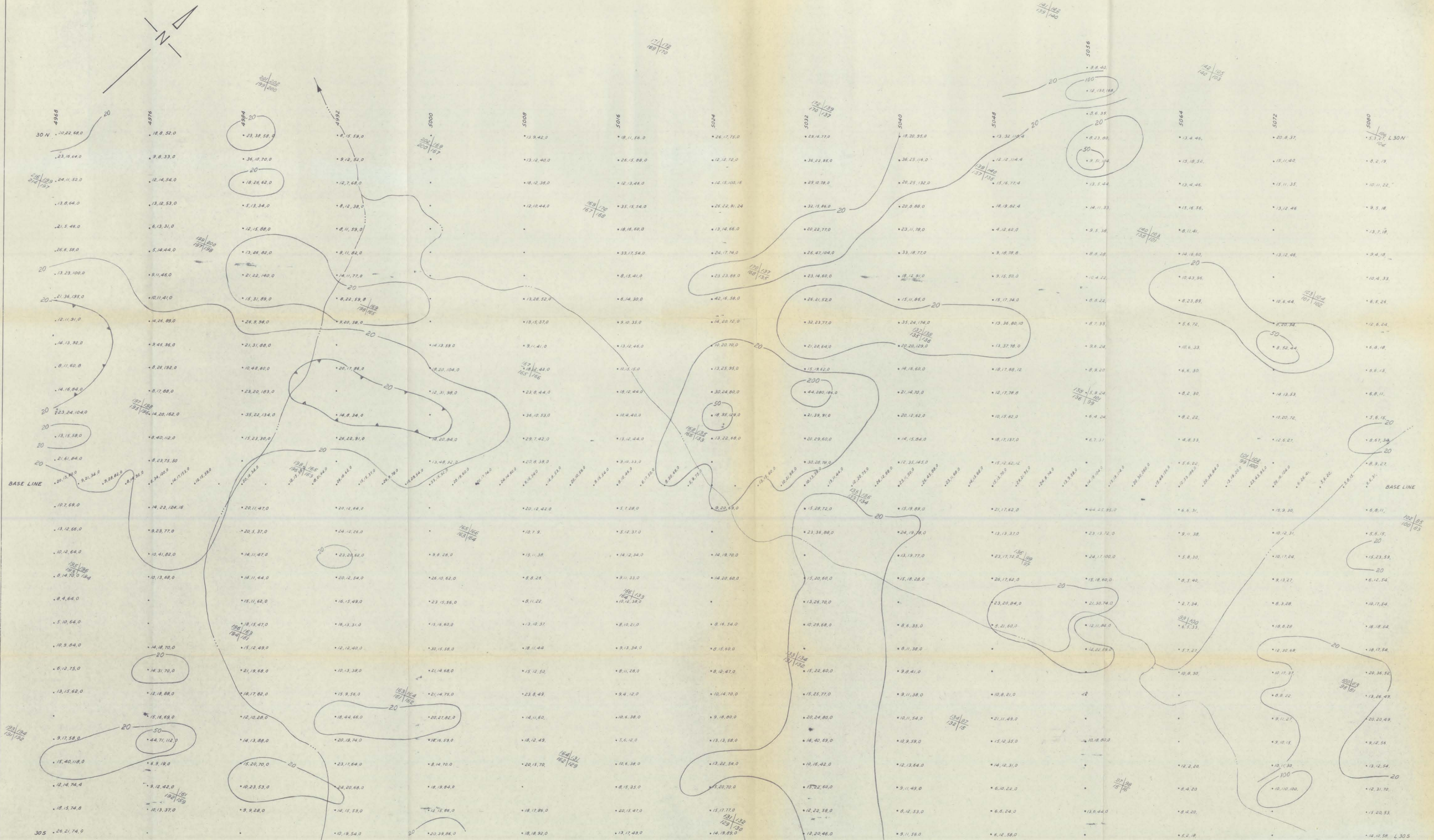


COPPER

Results in ppm: 15, 10, 50, 2
 Cu, Pb, Zn, Mo
 Attack: Hot aqua regia
 Estimation: AA Spectrophotometry for Cu, Pb, Zn
 Thiocyanate colorimetry for Mo

Grid 1

ATLAS EXPLORATIONS LIMITED	
VICTOR PROJECT - BID GROUP GEOCHEMICAL VALUES MAP	
N. T. S.: 115-J-13	SCALE: 1" = 400'
DATE OF SURVEY: June 1970	PARTY CHIEF: P. Deon
DATE DRAFTED: " "	DRAFTED BY: G.T.
DATE REVISED: " "	REVISED BY:
CHECKED BY:	FIGURE No.:

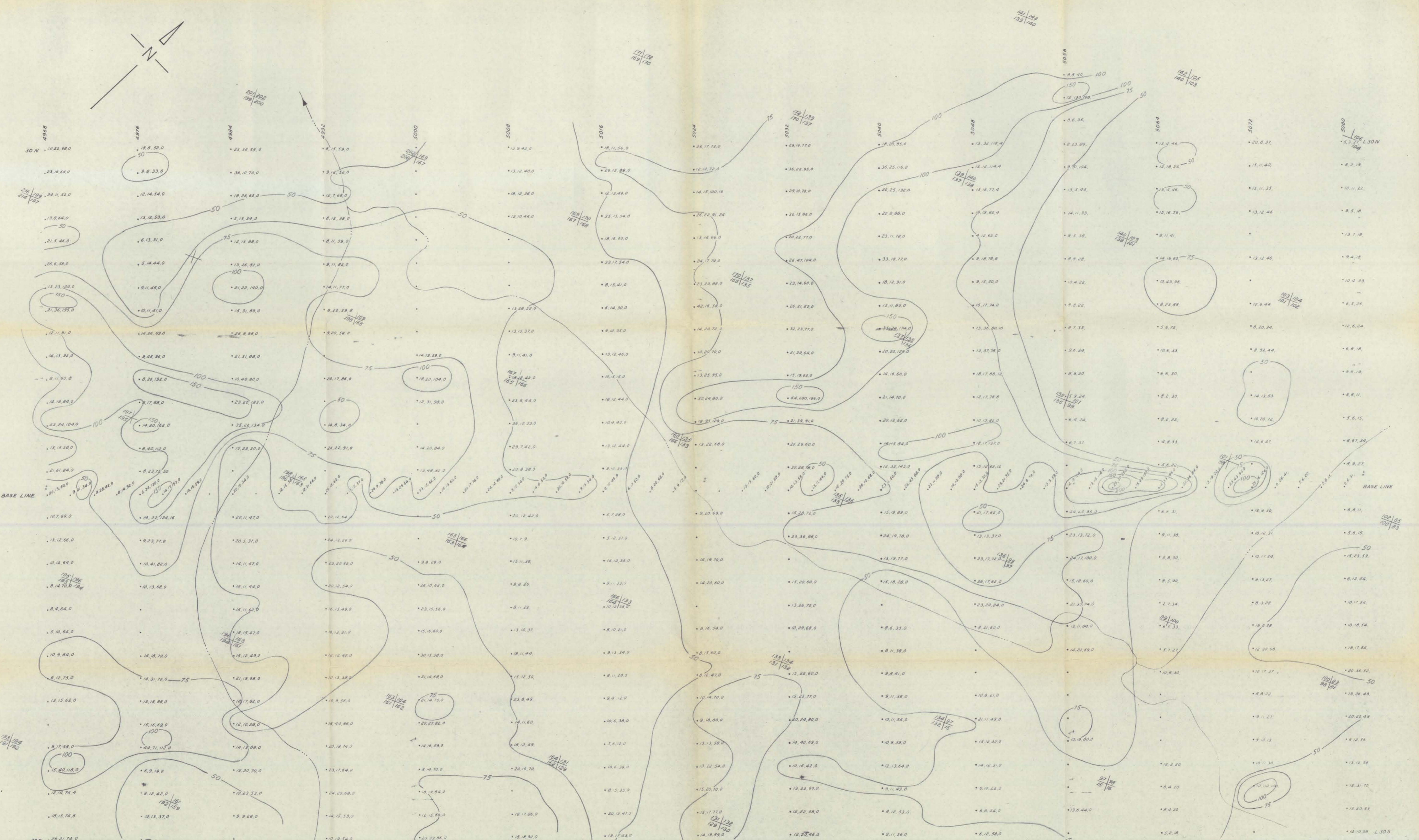
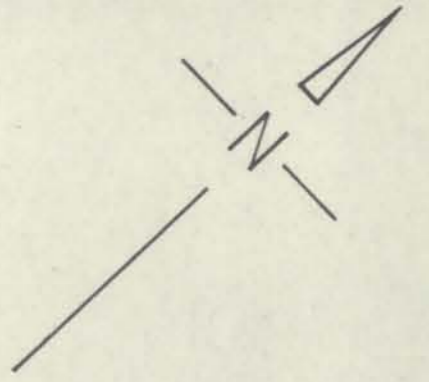


LEAD

Results in ppm .15, 10, 50, 2
 Cu, Pb, Zn, Mo
 Attack: Hot aqua regia
 Estimation: AA Spectrophotometry
 for Cu, Pb, Zn
 Thiocyanate colorimetry for Mo

Grid 1

ATLAS EXPLORATIONS LIMITED	
VICTOR PROJECT - BID GROUP GEOCHEMICAL VALUES MAP	
N. T. S. 115-J-13	SCALE 1" = 400'
DATE OF SURVEY: June 1970	PARTY CHIEF: P. Dean
DATE DRAFTED: " "	DRAFTED BY: G.T.
DATE REVISED: " "	REVISED BY:
CHECKED BY:	FIGURE No:




ZINC

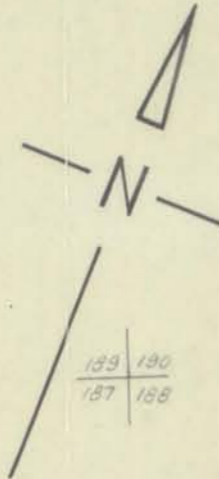
Results in ppm .15, 10, 50, 2
Cu, Pb, Zn, Mo
Attack: Hot aqua regia
Estimation: AA Spectrophotometry
for Cu, Pb, Zn
Thiocyanate colorimetry for Mo

Grid 1

ATLAS EXPLORATIONS LIMITED

**VICTOR PROJECT - BID GROUP
GEOCHEMICAL VALUES MAP**


N. T. S.		SCALE
115-J-13		1" = 400'
DATE OF SURVEY: June 1970	PARTY CHIEF: P. Dean	
DATE DRAFTED: " "	DRAFTED BY: G.T.	
DATE REVISED: " "	REVISED BY:	
CHECKED BY:	FIGURE No.	

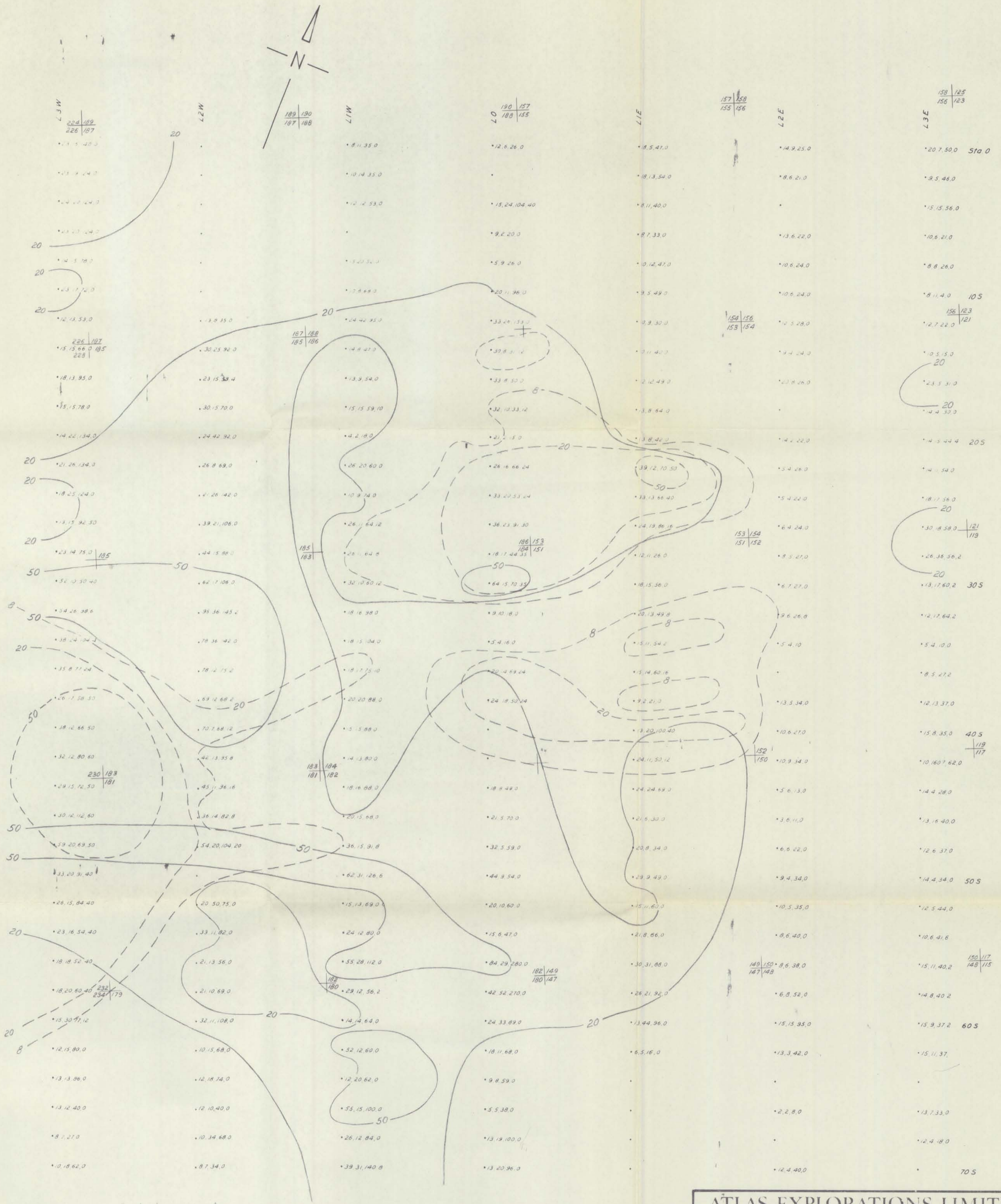


L3W	L2W	L1W	L0	L1E	L2E	L3E
224/189 225/187		139/130 187/188	130/157 188/155	157/158 155/156	158/125 155/123	
*23,15,140,0		*8,11,35,0	*12,6,26,0	*18,5,47,0	*14,9,25,0	*20,7,50,0 Sta. 0
*23,19,124,0		*10,14,35,0		*18,13,54,0	*8,6,21,0	*9,5,46,0
*24,20,124,0		*12,12,53,0	*15,24,104,40	*8,11,40,0		*15,15,56,0
*23,20,124,0			*9,2,20,0	*8,7,33,0	*13,6,22,0	*10,6,21,0
*14,15,78,0		*15,20,52,0	*5,9,26,0	*10,12,47,0	*10,6,24,0	*8,8,26,0
*23,17,72,0		*10,8,68,0	*20,11,96,0	*9,5,49,0	*10,6,24,0	*8,11,4,0 10S
*12,13,53,0	*13,8,35,0	*24,42,95,0	*33,26,153,0	*10,9,30,0	158/155 153/154	158/123 121/121
226/187 15,15,66,0 185 228	30,25,92,0	14,8,47,0	30,8,31,12	10,11,40,0	9,4,24,0	10,5,15,0
*18,13,95,0	*23,15,53,4	*13,9,54,0	*33,8,50,0	*12,12,49,0	*20,8,26,0	*23,5,31,0
*15,15,78,0	*30,15,70,0	*15,15,59,10	*32,10,33,12	*13,8,64,0		*14,4,30,0
*14,22,134,0	*24,42,92,0	*4,2,18,0	*21,2,15,0	*13,8,42,0	*14,2,22,0	*14,15,44,4 20S
*21,26,134,0	*26,8,69,0	*26,20,60,0	*26,16,66,24	*39,12,70,50	*5,4,26,0	*14,11,54,0
*18,25,124,0	*21,26,142,0	*10,9,74,0	*33,20,53,24	*33,13,66,40	*5,4,22,0	*18,17,56,0
*13,15,92,50	*39,21,106,0	*26,11,64,12	*36,23,91,30	*24,19,86,16	*6,4,24,0	30,18,58,0 121/119
*23,14,75,0 185 230/183	*44,15,88,0	186/184 26,11,64,8	186/153 187/157	*18,17,44,35	*8,5,27,0	*26,36,56,2
*52,10,50,40	*62,17,108,0	*32,10,60,12	*64,15,70,35	*18,15,56,0	*6,7,27,0	*13,17,60,2 30S
*54,26,98,6	*95,36,145,2	*18,16,90,0	*9,10,18,0	*20,13,49,8	*9,6,26,8	*12,17,64,2
*38,24,104,4	*78,36,142,0	*18,15,104,0	*5,4,16,0	*15,11,54,2	*5,4,10	*5,4,10,0
*35,8,77,24	*78,12,75,2	*18,17,75,10	*20,14,69,24	*15,14,60,16		*8,5,27,2
*26,17,58,50	*69,12,68,2	*20,20,88,0	*24,18,50,24	*9,2,21,0	*13,5,34,0	*12,13,37,0
*38,12,66,50	*70,7,68,12	*15,15,88,0		*13,20,100,40	*10,6,27,0	*15,8,35,0 40S
*32,12,80,60	*42,13,95,8	*14,13,80,0	188/151 182/149	*24,11,50,12	151/152 149/150	119/117 *10,160,7,62,0
230/183 *29,15,72,50 181	*45,11,96,16	*18,16,88,0	*18,8,49,0	*24,24,69,0	*5,6,13,0	*14,4,28,0
*30,12,112,60	*36,14,82,8	*20,15,68,0	*21,5,70,0	*21,6,30,0	*3,6,11,0	*13,16,40,0
*59,20,69,50	*54,20,104,20	*36,15,91,8	*32,5,59,0	*20,8,34,0	*6,6,22,0	*12,6,37,0
*33,20,91,40		*62,31,126,6	*44,9,54,0	*29,9,49,0	*9,4,34,0	*14,4,34,0 50S
*26,15,84,40	*20,50,75,0	*15,13,69,0	*20,10,60,0	*15,11,60,0	*10,5,35,0	*12,5,44,0
*23,16,54,40	*33,11,82,0	*24,12,80,0	*15,6,47,0	*21,8,66,0	*8,6,40,0	*10,6,41,6
*18,18,52,40	*21,13,56,0	*55,28,112,0	*84,29,280,0	*30,31,88,0	149/150 147/149	150/117 148/115 *15,11,40,2
181/182 179/180 *18,20,60,40 232/181 233/179	*21,10,69,0	181/182 179/180 *29,12,56,2	180/149 180/147 *42,52,270,0	*26,21,92,0	*6,8,52,0	*14,8,40,2
*15,30,77,12	*32,11,108,0	*14,14,64,0	*24,33,89,0	*13,44,96,0	*15,15,95,0	*15,9,37,2 60S
*12,15,80,0	*10,15,68,0	*52,12,60,0	*18,11,68,0	*6,5,16,0	*13,3,42,0	*15,11,37,
*13,13,86,0	*12,18,74,0	*12,20,62,0	*9,8,59,0			
*13,12,40,0	*12,10,40,0	*55,15,100,0	*5,5,38,0		*2,2,8,0	*13,7,33,0
*8,7,27,0	*10,34,68,0	*26,12,84,0	*13,19,100,0			*12,4,18,0
*10,18,62,0	*8,7,34,0	*39,31,140,8	*13,20,96,0		*12,4,40,0	70S

Results in p.p.m. 15, 10, 50, 2
Cu, Pb, Zn, Mo
Attack: Hot aqua regia
Estimation: AA Spectrophotometry
for Cu, Pb, Zn
Thiocyanate colorimetry for Mo

Grid 2

ATLAS EXPLORATIONS LIMITED		
VICTOR PROJECT - BID GROUP GEOCHEMICAL VALUES MAP		
N. T. S. : 115-J-13		SCALE : 1" = 400'
DATE OF SURVEY : June 1970	PARTY CHIEF : P. Dean	
DATE DRAFTED :	DRAFTED BY : G.T.	
DATE REVISED :	REVISED BY :	
CHECKED BY :	FIGURE No. :	



COPPER, MOLY.


Copper ——— 20 ———
 Moly - - - - - 50 - - - - -

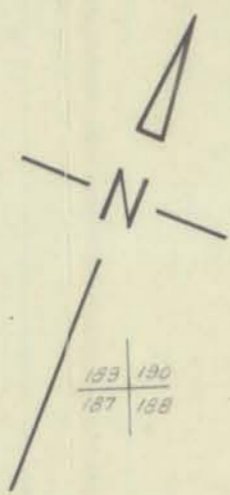
Results in p.p.m. .15, 10, 50, 2
 Cu, Pb, Zn, Mo
 Attack: Hot aqua regia
 Estimation: AA Spectrophotometry
 for Cu, Pb, Zn
 Thiocyanate colorimetry for Mo

Grid 2

ATLAS EXPLORATIONS LIMITED

VICTOR PROJECT - BID GROUP
 GEOCHEMICAL VALUES MAP


N T S.			SCALE
115-J-13			1" = 400'
DATE OF SURVEY	June 1970	PARTY CHIEF	P Dean
DATE DRAFTED		DRAFTED BY	G.T.
DATE REVISED		REVISED BY	
CHECKED BY		FIGURE No.	



M 27	M 27	M 27	L 0	L 1 E	L 2 E	L 3 E
23,15,140,0		8,11,35,0	12,6,26,0	18,5,47,0	14,9,25,0	20,7,50,0 50,0
23,19,124,0		10,14,35,0		18,13,54,0	8,6,21,0	9,5,46,0
24,20,124,0		12,12,53,0	15,24,104,40	8,11,40,0		15,15,56,0
23,20,124,0			9,2,20,0	8,7,33,0	13,6,22,0	10,6,21,0
14,15,78,0		15,20,52,0	5,9,26,0	10,12,47,0	10,6,24,0	8,8,26,0
23,17,72,0		10,8,68,0	20,11,96,0	9,5,49,0	10,6,24,0	8,11,4,0 10,5
12,13,53,0	13,8,35,0	24,42,95,0	33,26,153,0	10,9,30,0	12,5,28,0	12,7,22,0 12,1
15,15,66,0 12,5	30,25,92,0	14,8,47,0	30,8,31,12	10,11,40,0	9,4,24,0	10,5,15,0
18,13,95,0	23,15,53,4	13,9,54,0	33,8,30,0	12,12,49,0	20,8,26,0	23,5,31,0
15,15,78,0	30,15,70,0	15,15,59,10	32,10,33,12	13,8,64,0		14,4,30,0
14,22,134,0	24,42,92,0	4,2,18,0	21,2,15,0	13,8,42,0	14,2,22,0	14,15,44,4 20,5
21,26,134,0	26,8,69,0	26,20,60,0	26,16,66,24	39,12,70,50	5,4,26,0	14,11,54,0
18,25,124,0	21,26,142,0	10,9,74,0	33,20,53,24	33,13,66,40	5,4,22,0	18,17,56,0
13,15,92,50	39,21,106,0	26,11,64,12	36,23,91,30	24,19,86,16	6,4,24,0	30,18,58,0 12,1
23,14,75,0 12,5	44,15,88,0	25,11,64,8	18,17,44,35 15,1	12,11,26,0	8,5,27,0	26,36,56,2
52,10,50,40	62,17,106,0	32,10,60,12	64,15,70,35	18,15,56,0	6,7,27,0	13,17,60,2 30,5
54,26,38,6	95,36,145,2	18,16,38,0	9,10,18,0	20,13,49,8	9,6,26,8	12,17,64,2
38,24,104,4	78,36,142,0	18,15,104,0	5,4,16,0	15,11,54,2	5,4,10	5,4,10,0
35,8,71,24	78,12,75,2	18,17,75,10	20,14,69,24	15,14,60,16		8,5,27,2
26,17,58,50	69,12,68,2	20,20,88,0	24,18,30,24	9,2,21,0	13,5,34,0	12,13,37,0
38,12,66,50	70,7,68,12	15,15,88,0		13,20,100,40	10,6,27,0	15,8,35,0 40,5
32,12,80,60	42,13,95,8	14,13,80,0		24,11,50,12	10,9,34,0	10,160,7,62,0 11,9
29,15,72,50 12,1	45,11,36,16	18,16,88,0	18,8,48,0	24,24,69,0	5,6,13,0	14,4,28,0
30,12,112,60	36,14,82,8	20,15,68,0	21,5,70,0	21,6,30,0	3,6,11,0	13,16,40,0
59,20,69,50	54,20,104,20	36,15,91,8	32,5,59,0	20,8,34,0	6,6,22,0	12,6,37,0
33,20,91,40		62,31,126,6	44,9,54,0	29,9,49,0	9,4,34,0	14,4,34,0 50,5
26,15,84,40	20,50,75,0	15,13,69,0	20,10,60,0	15,11,60,0	10,5,35,0	12,5,44,0
23,16,54,40	33,11,82,0	24,12,80,0	15,6,47,0	21,8,66,0	8,6,40,0	10,6,41,6
18,18,52,40	21,13,56,0	55,28,112,0	84,29,280,0	30,31,88,0	8,6,38,0	15,11,40,2 15,0
18,20,60,40 23,4	21,10,69,0	29,12,56,2	42,52,270,0	26,21,92,0	6,8,52,0	14,8,40,2 14,8
15,30,77,12	32,11,108,0	14,14,64,0	24,33,89,0	13,44,96,0	15,15,95,0	15,9,37,2 60,5
12,15,80,0	10,15,68,0	52,12,60,0	18,11,68,0	6,5,16,0	13,3,42,0	15,11,37,
13,13,86,0	12,18,74,0	12,20,62,0	9,8,59,0			
13,12,40,0	12,10,40,0	55,15,100,0	5,5,38,0		2,2,8,0	13,7,33,0
8,7,27,0	10,34,68,0	26,12,84,0	13,19,100,0			12,4,18,0
10,18,62,0	8,7,34,0	39,31,140,0	13,20,96,0		12,4,40,0	70,5

Results in p.p.m. .15, 10, 50, 2
 Cu, Pb, Zn, Mo
 Attack: Hot aqua regia
 Estimation: AA Spectrophotometry
 for Cu, Pb, Zn
 Thiocyanate colorimetry for Mo

Grid 2

ATLAS EXPLORATIONS LIMITED			
VICTOR PROJECT - BID GROUP GEOCHEMICAL VALUES MAP			
N. T. S.:	115-J-13		SCALE: 1" = 400'
DATE OF SURVEY:	June 1970	PARTY CHIEF:	P. Dean
DATE DRAFTED:		DRAFTED BY:	G.T.
DATE REVISED:		REVISED BY:	
CHECKED BY:		FIGURE No.:	