

(1)

ASSESSMENT REPORT



ZAN, JET, TIM, A.C., MX. MINERAL CLAIMS,

WHITEHORSE MINING DISTRICT, YUKON TERRITORY

NTS SHEET 105 K 6

(62° 24'N) (133° 15'W)

FOR

MERCURY EXPLORATIONS LIMITED

SUBMITTED JUNE 6th, 1969

BY

Robert E. Chaplin P. Eng. BC

This report has been examined by the Geological Evaluation Unit. Approved as to technical worth by:

[Signature]
RESIDENT GEOLOGIST

Approved as to cost in the amount of: \$ ~~2800.00~~ 44366.129/12/69

[Signature]
RESIDENT MINING ENGINEER

Accepted as representation work under Section 53(4) Yukon Quartz Mining Act.

[Signature]
COMMISSIONER OF YUKON

TABLE OF CONTENTS:

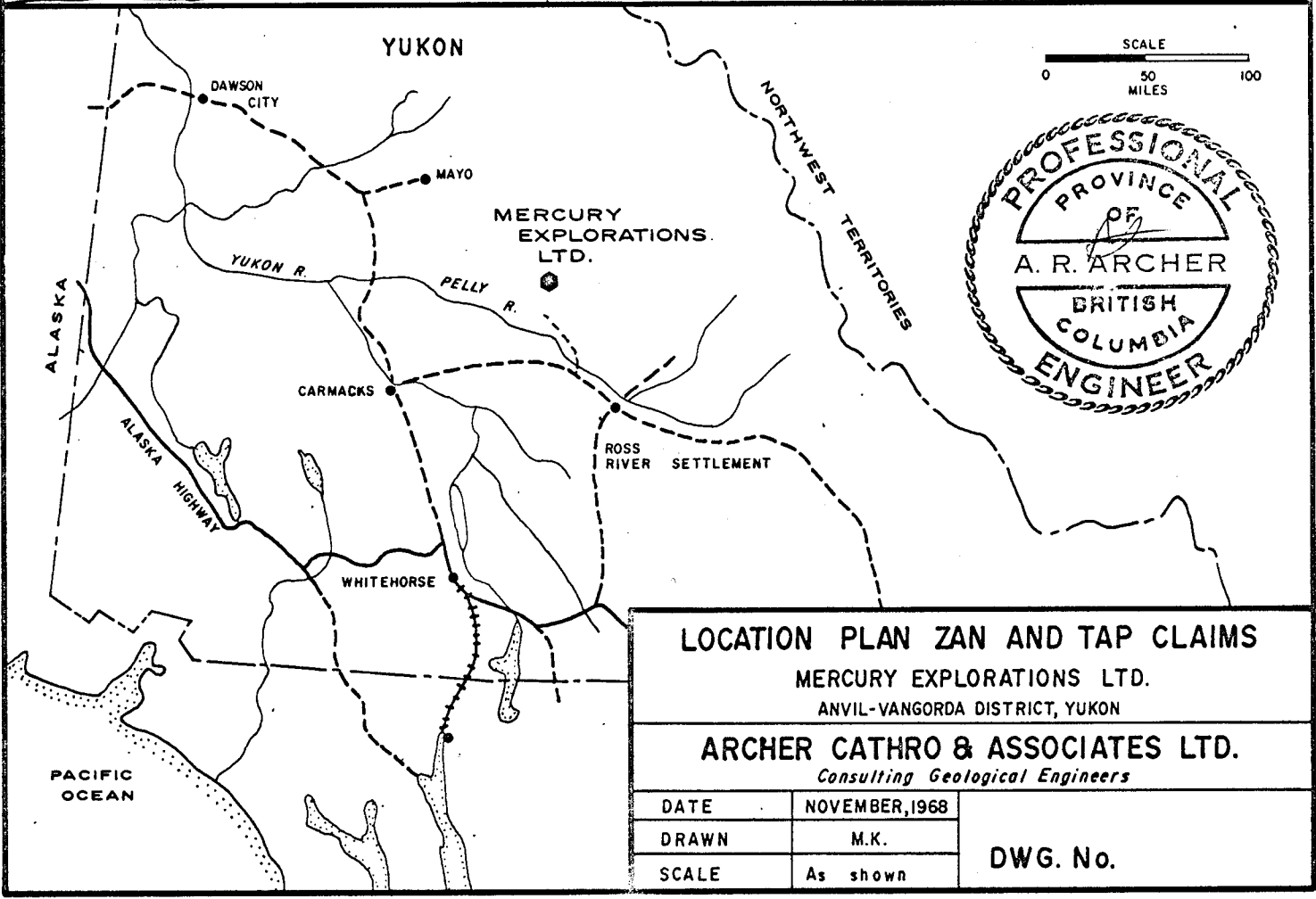
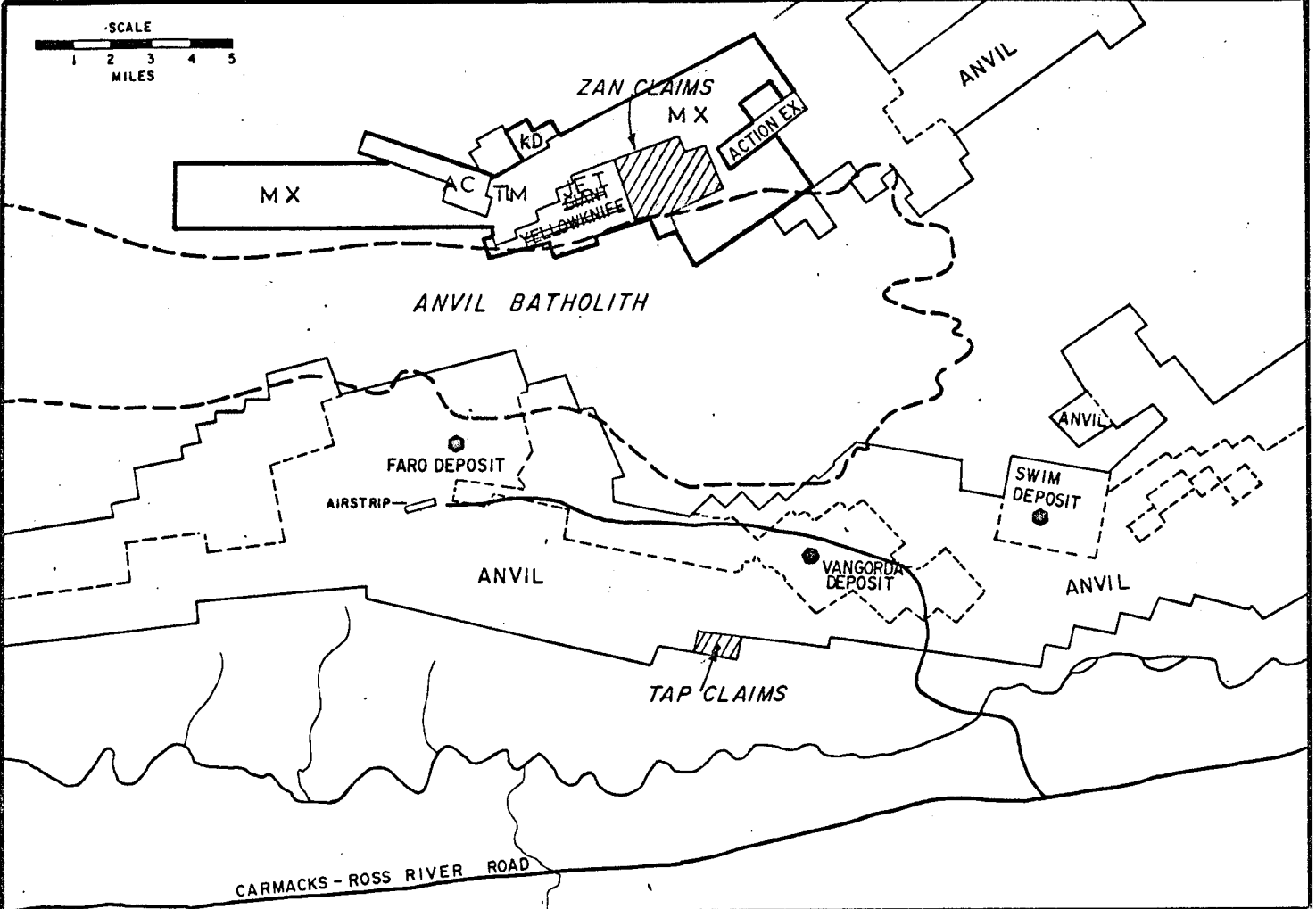
	<u>PAGE NO:</u>
<u>SUMMARY:</u>	2
<u>INTRODUCTION:</u>	3
PROPERTY LOCATION, ACCESS.....	4
HISTORY.....	4, 5
<u>GEOLOGY:</u>	6, 7, 8
<u>EXPLORATION:</u>	
GRAVITY SURVEY	
- Survey Procedure.....	10, 11
- Data Reduction	11, 12, 13
- Summary of Computation.....	13, 14, 15
- Conclusions & Recommendations.....	16
GEOCHEMICAL SURVEY	
- Survey Results.....	17
<u>ATTACHMENTS:</u>	
1. CLAIM SUMMARY.....	A
2. WORK-DAY BREAKDOWN.....	B, C, D
3. GRAVITY SURVEY COST PER DAY.....	D
4. PAYROLL SUMMARY.....	E
5. EXPENDITURE FOR ASSESSMENT WORK.....	F
6. STATEMENT OF QUALIFICATIONS.....	G, H
<u>ILLUSTRATIONS:</u>	
MX, TIM, AC, JET, ZAN, KD LOCATION MAP - 4 MILE	
MX, TIM, AC, JET, ZAN, KD LOCATION MAP WITH SURVEY GRID - 1/2 IN POCKET	
ZAN CLAIM MAP	
LEAD GEOCHEMISTRY ZAN CLAIM	
ZINC GEOCHEMISTRY ZAN CLAIM	
COPPER GEOCHEMISTRY ZAN CLAIM	
	} IN REPORT

TABLE OF CONTENTS - cont'd

IN POCKET:

1/2 MILE MAPS

GRAVITY MAPS 1 - 8



LOCATION PLAN ZAN AND TAP CLAIMS	
MERCURY EXPLORATIONS LTD. ANVIL-VANGORDA DISTRICT, YUKON	
ARCHER CATHRO & ASSOCIATES LTD. <i>Consulting Geological Engineers</i>	
DATE	NOVEMBER, 1968
DRAWN	M.K.
SCALE	As shown
DWG. No.	

SUMMARY:

Mercury Explorations Ltd spent \$49,834.00 on the ZAN, JET, TIM, A.C. & MX mineral claims performing a gravity survey, and geochemical survey.

Three anomalies appear on the ZAN, JET, & TIM claims. The gravity anomalies are on overburden area that is probably underlain by a quartzitic-sericitic phyllite, close to the lower-middle Cambrian phyllite boundary.

Further testing with gravity and induced polarization surveys is recommended to further evaluate the current data prior to diamond drilling.

INTRODUCTION:

Mercury Explorations Ltd. prospected the Cambrian phyllite unit in the summer of 1968. The party, including Andy Horne, Fred Riley and John Graham under the direction of the writer found evidence of lead-zinc mineralization in the area both from the discovery of mineralized float of a local source and from geochemical reconnaissance work. Dr. D. Tempelman-Kluit of the G.S.C. mapped the area in 1967. His work indicated that the region's existing mineral deposits (Vangorda, Swim and Faro) are all contained within a narrow stratigraphic range in Cambrian phyllites. The same stratigraphic interval has been defined on the Mercury Explorations claims.

Past experience of Dynasty Explorations Limited, and G.S.C. data allowed our prospecting crew to locate subtle but significant indications of base metal sulphides. Case history studies of the Vangorda and Faro mineral deposits and associated rock types indicated the possible application of gravity surveys on a reconnaissance basis. Mercury Explorations consequently staked a 17-mile belt of favourable geology and prospected the area by means of a 75 line-mile gravity survey at 1000-foot intervals.

PROPERTY LOCATION, ACCESS:

The claims, known as the MX, TIM, A.C., K.D., JET and ZAN groups are located along a 17-mile W.N.W. trend about 8-miles north and north east of the Anvil Mining Corporation's Faro ore deposit. Access is by means of helicopter from nearby Faro or Ross River.

HISTORY:

The first significant discovery in the district, the Vangorda deposit, was found in 1963. This deposit, named after the creek in which it outcropped, was optioned by Prospectors Airways Ltd., which proved 9.4 million tons of lead-zinc ore. The deposit is now controlled by Vangorda Mines Ltd., a subsidiary of Kerr Addison Mines Ltd.

Exploration in the district was discontinued until 1964 when Dynasty Explorations Ltd. and Kerr Addison started surface exploration programs. In 1965 both companies located significant indications of new areas of mineralization and increased their activity. Dynasty, financed by Cyprus Mining Corporation, discovered the Faro deposit which has since been proven to contain 63.5 million tons of ore. The Faro deposit, under the operating company Anvil Mining Corporation Ltd., is being prepared for production starting October 1, 1969., at a total cost of 63 million dollars. Kerr Addison discovered the Swim deposit which is believed to contain

HISTORY - cont'd:

about 10 million tons of mineralization.

News of the Faro discovery in 1965 resulted in a staking rush culminating in some 8,000 claims of which more than half were owned by over 40 separate companies. Most of the tie-on claims were well located but, due to the high cost of exploration and general lack of local prospecting experience, little useful work was accomplished and the majority have been allowed to lapse without being adequately explored.

The area of Mercury's claims cover areas staked in 1966. Previous work on the ground consisted of prospecting by Indians in the earlier years, brief geochemical reconnaissance by Dynasty Explorations; helicopter magnetic and electro magnetic surveys, reconnaissance soil sampling and geological mapping by Giant Yellowknife Mines Limited in 1966. No prospecting has been done in the area since 1966. The Geological Survey of Canada mapped the area of the claims in 1967 and a high level airborne magnetic survey was published recently by the G.S.C.

GEOLOGY:Regional

The Ross River district lies within the eastern crystalline belt of the Yukon Territory - a zone of more or less metamorphosed sediments and volcanics intruded by medium grained quartz-monzonite and granodiorite batholiths and minor ultrabasics of Cretaceous age. The district has been heavily glaciated and the valleys and lower flanks of the mountains are generally covered by glacial till. Because of this, most of the significant structures, contacts and indications of mineralization are obscured.

The main structural feature of the district is the Tintina fault that is generally followed by the Pelly River valley and is probably related to the Rocky Mountain Trench. The ore deposits occur in a variously metamorphosed Cambrian phyllite approximately 3000 feet thick that is part of a Cambrian sequence of schist, phyllite, quartzite and marble. These Cambrian rocks form a belt five to ten miles wide and over fifty miles long paralleling the northeast side of the Tintina fault. This sequence was domed into a broad anticline by the intrusive Anvil batholith. Erosion has exposed the core of the intrusive and the favourable Cambrian rocks now occur as an elliptical halo around it and as minor small roof pendants.

The three known deposits of economic interest Vangorda, Faro and Swim, all average 3-4% lead, 5-6% zinc and 1-2 ounces

GEOLOGY - cont'd:Regional - cont'd

silver per ton. The ore minerals are associated with pyrite, pyrrhotite, minor arsenopyrite and quartz. Exploration techniques depend chiefly on the geophysical response of the massive sulfide mineralization and the geochemical dispersion of the lead and zinc if the deposit is near surface. There is an apparent stratigraphic relationship of the ore deposit to location within the phyllite formation. Proximity to the intrusive, grade of metamorphism or local faulting may also influence the economic geology. In all probability they are Cambrian replacements which have been recrystallized by metamorphic action associated with the Cretaceous intrusives. Thus, the Faro deposit, being closest to the intrusive is coarse grained while the Vangorda deposit, being some distance from the intrusive, is fine grained. The only associated alteration effect is a slight bleaching, primarily due to addition of silica, in an irregular envelope up to 200 feet thick.

ZAN, JET, TIM, MX, KD, A.C. claims.

Overburden obscures most of the local geology, Outcrop forms less than 10% of the surface area and is exposed at higher elevations. The area of interest lies mostly in topographic depressions where overburden may vary in excess of 100 feet deep.

Airborne geophysical data indicates that the claims cover the contact area between the Anvil Batholith and the Cambrian phyllites. The axis of the claims covers the lower-upper contact in the phyllites. It is believed by the writer that a stratigraphic interval close to

GEOLOGY - cont'd

the Lower-Upper Cambrian contact is of economic significance in the search for concordant base metal deposits of the Vangorda-Faro type.

EXPLORATION:

1968: Exploration by Mercury Explorations during 1968 consisted of reconnaissance prospecting in the area and soil sampling of the Zan claims. Soil samples were taken at 300 foot intervals on lines 1000 feet apart and analysed for lead, zinc and copper by atomic absorption spectrometry of a hot acid extraction. Two separate areas, each about 1200 feet by 1000 feet in size, were found to contain anomalous values in lead and zinc. Lead values averaged about four times background and zinc values about three times background. Both anomalous areas are found on the valley floor and may be due to metal rich seepages from local source.

Prospecting located lead and zinc mineralization in float in the south west corner of the Zan claims.

1969: The company undertook a gravity survey, the details of which will form the bulk of this report.

The work commenced on February 6th with camp construction by John Graham, and gravity surveys by R.G. Gifford P. Eng. and R. Currie M.Sc (Geophysics), all under the direction of the writer. The work commenced on the A.C. & JET claims to comply with geophysical submissions for assessment work before the third anniversary date of the recording of mineral claims in the Yukon Territory.

The JET & A.C. surveys were completed March 13th, 1969, however the final report is presented at the completion of the entire survey.

THE GRAVITY SURVEY:

Gravity data from the Faro deposit was kindly supplied for our perusal, to obtain an optimum reconnaissance gravity survey prospecting technique to locate a Faro-type deposit of one half the Faro size at a depth of greater than 100 feet below surface where the local geology indicated relatively flat-dips in the phyllite rocks. A residual gravity anomaly greater than 0.5 milligalls is anomalous. A grid was chosen with 200 foot stations along lines that cross-cut the geology and topography at 1000-foot intervals.

DETAILS OF SURVEY:

The survey set an arbitrary datum of 200.0 feet at line 400 + 00 on the baseline. Stations were established at 200-foot intervals along the base line. The base line was surveyed three times and is accurate to ± 1.0 foot per mile. Right-angled grid lines running magnetically north-south were set off at 1000-foot intervals. The elevation and horizontal controls were established by stadia using experienced operators on 2 WILD RDS transit (ser #) and one WILD T-16 transit (ser #)

Elevations were determined by a Pollen microbargraph-controlled field barometer used "skip-stop" style, on lines 430 (north) and 440 (north).

Elevation closures were maintained at no more than $\pm 3.0'$

DETAILS OF SURVEY = cont'd

per mile or \pm 0.2 milligals per mile.

GRAVITY METERS:

- 1 Worden Gravity Meter No. 784
scale constant 0.0964 milligals/scale division
- 1 LaCoste and Romberg Gravity Meter No. G 166

METER PROCEDURES:

Base stations were established along the base line using the 'ABAB' technique and all grid line metering was tied to these bases within two to three hours to determine instrument and diurnal drift. Closures were typically within 1 gravity unit. (0.1 milligals)

DATA REDUCTION:

Reduction of the observed field data to Bouguer values was conducted by accepted methods as follows.

A. Diurnal and meter drift was established by repeat observations at Base stations. Drift was then mathematically proportioned between the stations on each run. The height of the instrument above ground level was determined at each station. This was necessitated by the variable snow depth over the survey area. This free air correction

DATA REDUCTION - cont'd

was added to the drift correction and is shown as 'HI+DRIFT' on the data sheets.

B. Observed gravity values are M scale divisions ((OG (SD))) on data sheets) and must be multiplied by the appropriate scale constant ('GRAVITY METER SCALE CONSTANT' on data sheets) to give the value of gravity in gravity units. The observed gravity values must also be adjusted to an arbitrary datum and to compensate for day to day instrument and diurnal drift.

SURVEY FACTOR (GU OR SD) on data sheets. In the case of the Worden gravity meter (scale constant 0.964), this factor added to the observed reading and the sum is multiplied by the gravity meter scale constant and the HI+DRIFT correction is added to produce the observed gravity in gravity units (OG(GU) on the data sheets). In the case of the LaCoste and Romberg gravity meter (scale constant approximately 10.0), the observed gravity in scale divisions is multiplied by the appropriate scale constant, the survey factor and HI+DRIFT correction are added to produce the observed gravity in gravity units.

C. An elevation factor of 0.628 gravity units per foot was used as it produced the minimum correlation with topography. Observed gravity in gravity units plus the latitude correction plus 0.628 times the elevation yields the Bouguer gravity (BG D=2.5 on the data

DATA REDUCTION - cont'd

sheets).

D. A latitude correction of 0.20 gravity units per one hundred feet (north-south) was applied to the observed gravity. This correction is applied with respect to an arbitrary east-west datum line through the centre of the property. The value was computed for the latitude of the property ($62^{\circ} 24'N$). The correction is shown as 'LAT CORR' on the data sheets.

All computations were performed on the IBM model 360/67 at the University of British Columbia computing Centre by R. Currie.

REGIONAL GRADIENT:

Where warranted, the regional gradient was removed by visual smoothing to produce Bouguer Residual Gravity maps. This was done on selected parts of the Rocky Lake sector only as neither the Bee Lake sector nor the No Lake sector showed anomalous areas.

SUMMARY OF COMPUTATION:WARDEN:

(Observed gravity in scale divisions + survey factor)*

(gravity meter scale constant) + drift correction + height of instrument

SUMMARY OF COMPUTATION - cont'd

correction + latitude correction + (elevation with respect to datum) *
0.628 = Bouguer Gravity.

LACOSTE & ROMBERG:

(Observed gravity in scale divisions) * gravity meter scale constant +
survey factor + as above...

RESIDUAL BOUGUER GRAVITY MAPS:

No residual anomalies were deemed significant in the
No Lake and Bee Lake survey areas.

Three residual anomalous features were obtained from the
Rocky Lake survey area.

A total of approximately seventy line miles of gravity
survey was completed from which approximately four percent of the
original areas contained anomalous residual gravity features. The
anomalies are concentrated in a W.N.W. trend on the ZAN and JET
mineral claim groups.

The assessment of the gravity data over the anomalous
areas is as follows:

LINE 440-450-460 NORTH. The elevations were in part
barometrically determined and consequently the feature must be
verified using stadia elevation control of this apparent 0.9 mgal
residual anomaly.

LINE 420 (NORTH). The survey was not carried far enough

north to adequately evaluate the regional gravity gradient associated with this 1.5 mgal feature.

FEATURE CENTERED ON LINE 360 NORTH

1200 REC A 0.8 mgal anomaly of homogeneous nature extends over
500 REC
~~1200~~-foot by ~~1200~~ foot area underlain by terraced gravels through which extends a 50-foot deep gully - otherwise the area of the anomaly is essentially one of low hummocky topography in a broad valley. The survey control over this anomaly is considered to be within acceptable survey limits.

~~Using both the 1200 and 500 REC data the anomaly is centered on line 360 north of line 350 north.~~
~~The anomaly is centered on line 360 north of line 350 north.~~

REC

CONCLUSIONS & RECOMMENDATIONS:

The possible partial causes of the gravity anomalies are:

- (1) error in survey control as described.
- (2) local high bedrock relief with respect to topographic surface.
- (3) a concentration of heavy density material in bedrock of approximately fifteen-million tons in the largest anomaly.

All anomalous gravity features should be detailed using lines spread at 400-foot intervals and readings taken at 100-foot stations.

The reconnaissance gravity should be carried toward the eastern limit of the claims involving approximately 20 line miles of survey.

Induced polarization check surveys should be carried out over the anomalous gravity features to determine the selection of diamond drill stations.

Robert A. Shogler
June 6/69

GEOCHEMICAL SURVEY ZAN (1.48) CLAIMS:

Approximately two-hundred and fifty soil samples were collected by Messrs. J. Graham, F. Riley, and A. Horne in September 1968 one lines at 300-foot sample intervals. The lines are spaced 1000-apart. The B & C soil horizons were sampled below a layer of white volcanic ash and all samples were dried and analysed by Barringer Research Limited for total lead, zinc, and copper.

SURVEY RESULTS:

Two separate areas, each about 1200' by 1000 feet contain anomalous values in lead and zinc of about 2 to 4 times background. The geochemical anomalies are not intense, and may be due to metals carried in one case from a nearby uphill source (eastern anomaly) or from either a transported or buried, subsurface source (the western anomaly). The surface area of the latter anomaly is of a flat-to hummocky nature overgrown by buckbrush. The subsurface material is largely of a sand to gravel transported material. Why the anomaly is so localized within this type of morainal material is a curiosity! - and by itself is not of any obvious economic significance. The eastern anomaly is probably due to the presence of lead and zinc in a narrow bedded zone within the phyllites barely outcropping a short distance east and uphill from the geochemical anomaly. The geochemical data may aid in determining the cause of the obtained gravity anomaly, the easterly portion of which co-incides with the western-most geochemical zone.

Robert E. Chaplin

(A)

<u>CLAIM NAME:</u>	<u>GRANT NO:</u>	<u>TAG. NO.</u>	<u>GOOD STANDING DATE:</u>
ZAN 1-14	Y25973-Y25986		SEPT 9, 1969
" 15	Y26126		SEPT 23, 1969
16-24	Y25987-Y25995		SEPT 9, 1969
25-48	Y26127-Y26150		SEPT 23, 1969
TIM 1-32	Y30297-Y30328		FEB 11, 1970
MX 1-68			
93-164)	Y30497-Y30836		MARCH 11, 1970
178-362)			
501-524	Y31162-Y31185		APRIL 24, 1970

NOTE: THERE IS NO MX 323

DOUBLE NUMBERS

MX186A-187A

222A-233A

300A-301A

(B)

ROCKY LAKE:

Charlie Ollie	(March 24 - 31 April 1 - 3	Survey "
Felix Reyes	March 6 - 31	"
Ken Fehr	March 6 - 31	"
Tim Connolly	March 6 - 31	"
Ryan Schultz	March 6 - 31	"
Ken MacPhee	March 6 - 25	"
Peter Fox	April 21 - 28	"
Robert Etzel	March 5 - 31	"
Felix Reyes	April 1 - 15	"
Sid Atkinson	April 22 - 29	"
Ken Fehr	April 22 - 30	"
Tim Connolly	(April 1 - 2 April 17 - 30	" "
Ken MacPhee	March 26 - 31	Gravity
Ryan Schultz	April 1 - 11	"
Ken MacPhee	April 1 - 11	"

(C)

BEE LAKE:

Felix Reyes	April	16 - 29	Survey
Sam McLeod	April	14 - 28	"
Peter Fox	April	14 - 20	"
Sid Atkinson	April	14 - 21	"
Ken Fehr	April	14 - 21	"
Ken MacPhee	April	13 - 16	"
Robert Etzel	April	1 - 5	"
Ryan Schultz	April	19 - 30	Gravity
Ken MacPhee	(April	5 - 12	"
	April	17 - 30	"

(D)

NO LAKE:

John Graham	April 1 - 13	Survey
Charlie Ollie	April 3 - 13	"
Peter Fox	April 5 - 13	"
Ken Fehr	April 4 - 13	"
Tim Connolly	April 3 - 16	"
John Ollie	April 5 - 13	"
Ryan Schultz	March 12 - 17	Gravity

ZAN CLAIMS - GEOCHEMICAL PROSPECTING:

- F. Riley	Sept 24th - Oct 5th, 1968
- A. Horne	Sept 24th - Oct 5th, 1968
- J. Graham	Sept 24th - Oct 5th, 1968
- R. Chaplin	Sept 30th, 1968

AVERAGE COST OF THE GRAVITY SURVEY PER DAY:

$\frac{\$47,334}{78 \text{ days}} \approx 600.00 \text{ per day}$

The approximate cost per line mile is 600.00 per line mile.

(E)

WORKERS + TIME

M-4

CLAIM GROUP ALLOTTMENT:

Bob Gifford P. Eng.	Feb 15th - March 15th
Ralph Currie (M.Sc) Geophysics	Feb 18th - March 1st March 8th- March 18th April 1st- April 12th April 19th-April 30th
John Graham	Feb 6th - Feb 18th March 4th - March 8th April 14th - April 30th
Bob Chaplin P. Eng.	April 18th - April 21st June 3rd - June 8th

C. Donders - Drafting	June 3rd - 5th
A. Birkland - Drafting	June 3rd - 5th
J. Marshall - Typing	June 3rd - 5th
P. Walsh - Accounting - Blueprints & Xerox	Feb - May
R. Currie - Data Reduction	- May

RATES OF PAY:

- R. Chaplin	-	100.00 / day
- R. Gifford	-	100.00 / day
- R. Currie	-	50.00 / day
- J. Graham	-	700.00 / month
- K. Fehr	-	800.00 / month
- F. Reyes	-	900.00 / month
- T. Connolly	-	650.00 / month
- R. Schultz	-	650.00 / month
- K. MacPhee	-	650.00 / month
- Indian Woodsmen	-	\$20-\$25 per day

(F)

EXPENDITURES FOR ASSESSMENT WORK:

Payroll	21,220.00
Rentals - Truck 3 mo. @ 300.00/mth	900.00
- Gravimeters	2,235.00
- Transits	620.00
- Bombardier	1,000.00
- Tractor	2,025.00
- Radio	445.00
- Calculators	300.00
- Skidoo	300.00
Camp Costs	
- 1/2 construction cost	1,500.00
- Stoves & fuel for heat & transport	2,100.00
- Food & dry goods	4,500.00
Equipment Purchases	
- Skidoo (1/2 price)	1,700.00
Flying Costs -	
On property and access to property from Whitehorse and Anvil strip	2,500.00
Supervision, Currie, Gifford & Chaplin	3,600.00
Geochemical Survey of ZAN Claims	2,500.00
Drafting, Typing, Accounting, & Blueprints	889.00
R. Currie - Data Reduction	1,500.00
TOTAL ASSESSMENT EXPENDITURES:	<hr/> 49,834.00

49834
∴ apply for ~~49~~ certificates of work

(G)

STATEMENT OF QUALIFICATIONS:

Ralph G. Currie:

B. Sc. (Honours Physics and Geophysics, U.B.C., 1965)

A section of this program was devoted to the theory and use of gravity meters as well as the interpretation of gravity data.

M. Sc. (Geophysics, U.B.C., 1968)

As a graduate student I assisted with a regional gravity survey conducted by the Geophysics Department. I also taught the laboratory and field portion of an Applied Geophysics course. This course included a section dealing with gravimetrics.

During July 1968 I metered and produced a Bouguer Gravity map on a 13 line-mile grid for Central B.C. Exploration Ltd. (N.P.L.)

During August 1968 I metered and produced Bouguer gravity maps on a (20) line mile grid for Mercury Explorations Ltd. (N.P.L.)

Ralph G. Currie

(H)

STATEMENT OF QUALIFICATIONS:

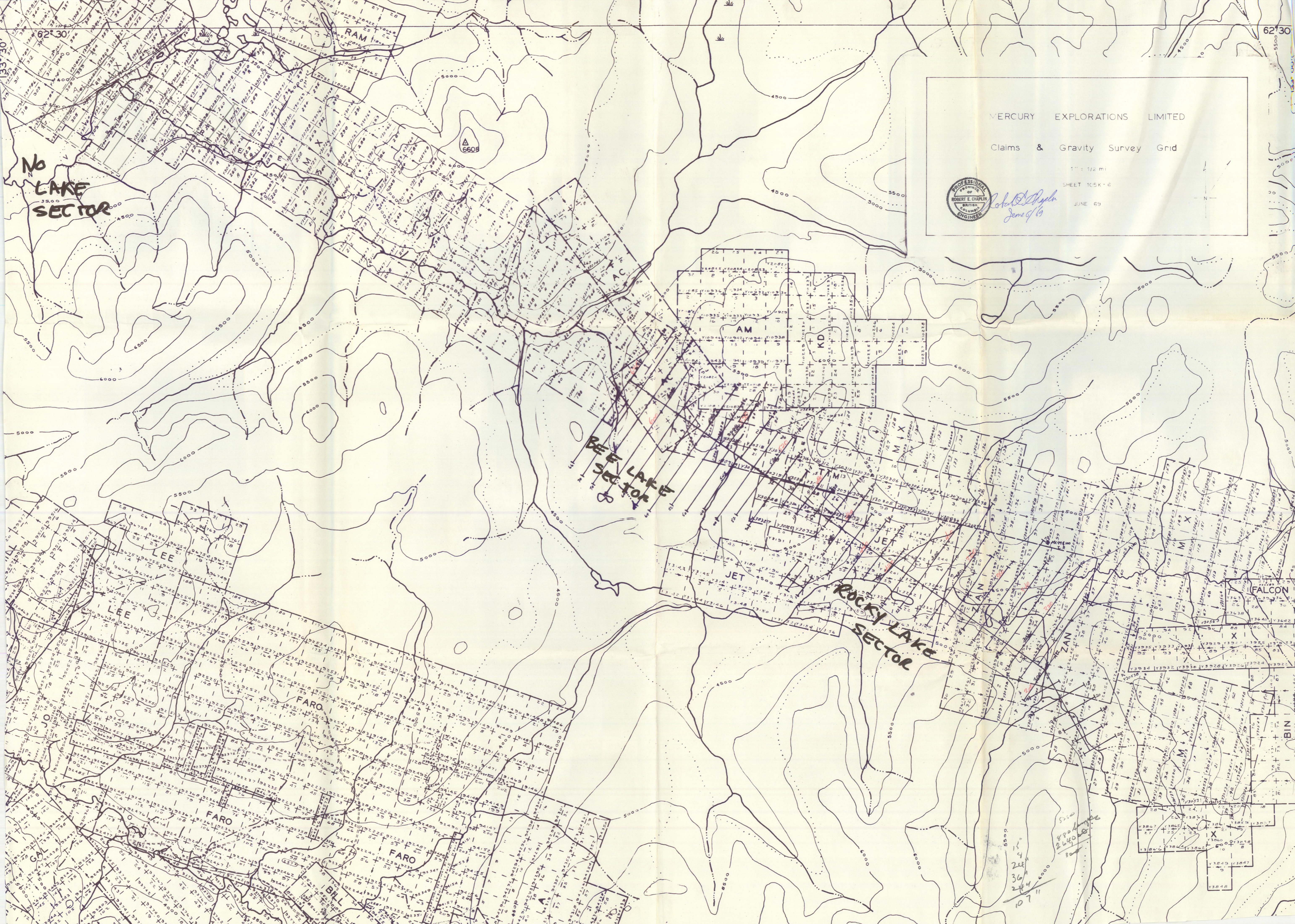
Robert E. Chaplin:

- Ba. Sc. (Geological Engineering, U.B.C. - 1959)

- Seventeen years experience in mineral exploration, three of which in anvil area, for Prospectors Airways (1959), Dynasty Explorations & Kerr Addison Mines (1964-65), Mercury Explorations (1968-69)

- Registered Professional Engineer in the Province of British Columbia.

Robert E. Chaplin



No
LAKE
SECTOR

RAM

BE
LAKE
SECTOR

AM

Rocky Lake
SECTOR

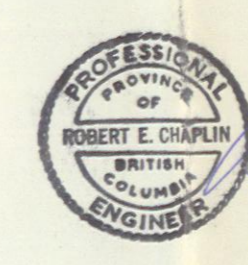
MERCURY EXPLORATIONS LIMITED

Claims & Gravity Survey Grid

1" = 1/2 mi

SHEET 105K-6

JUNE 69



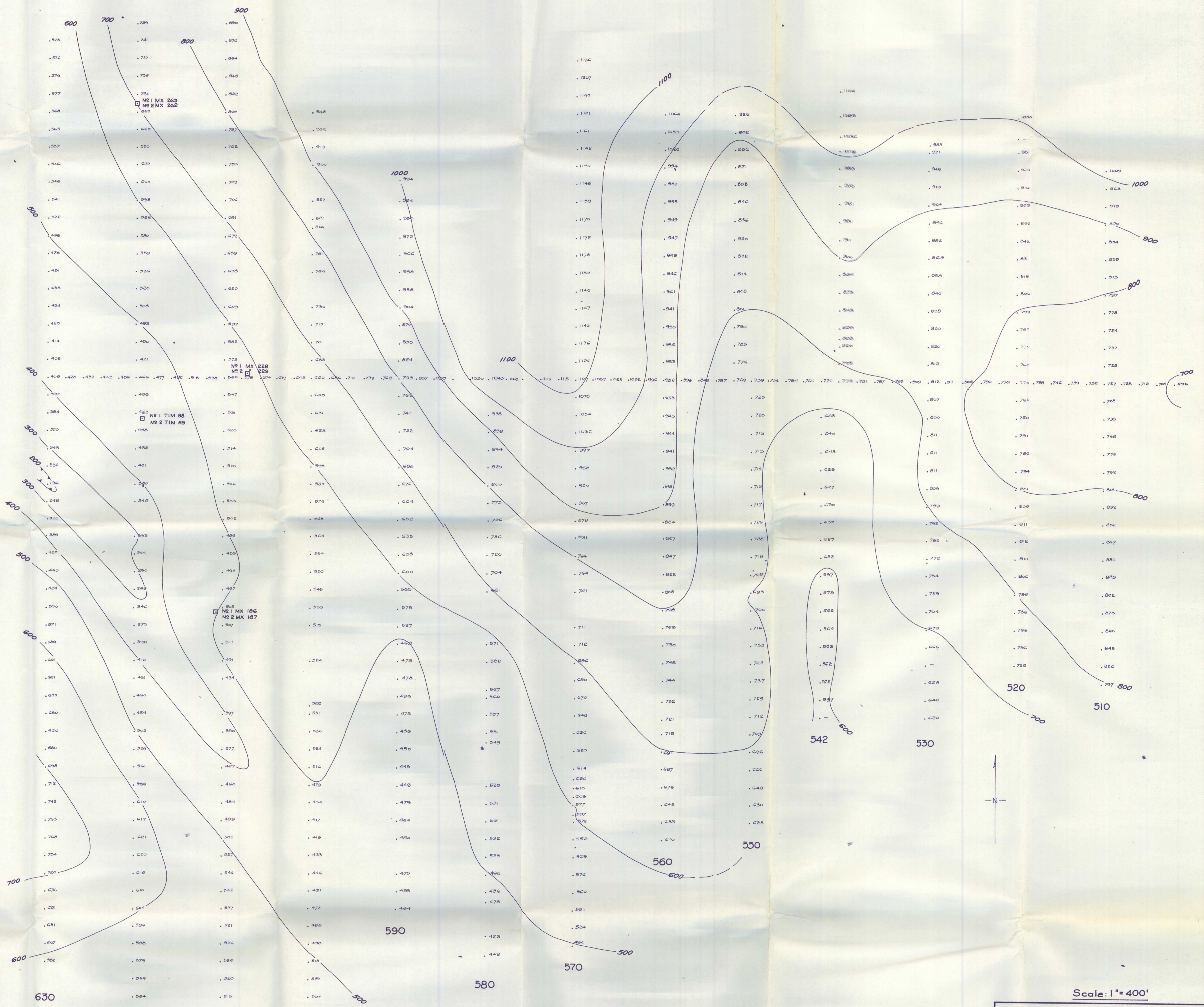
Robert E. Chaplin
June 1969

62°30'

FALCON

BIN

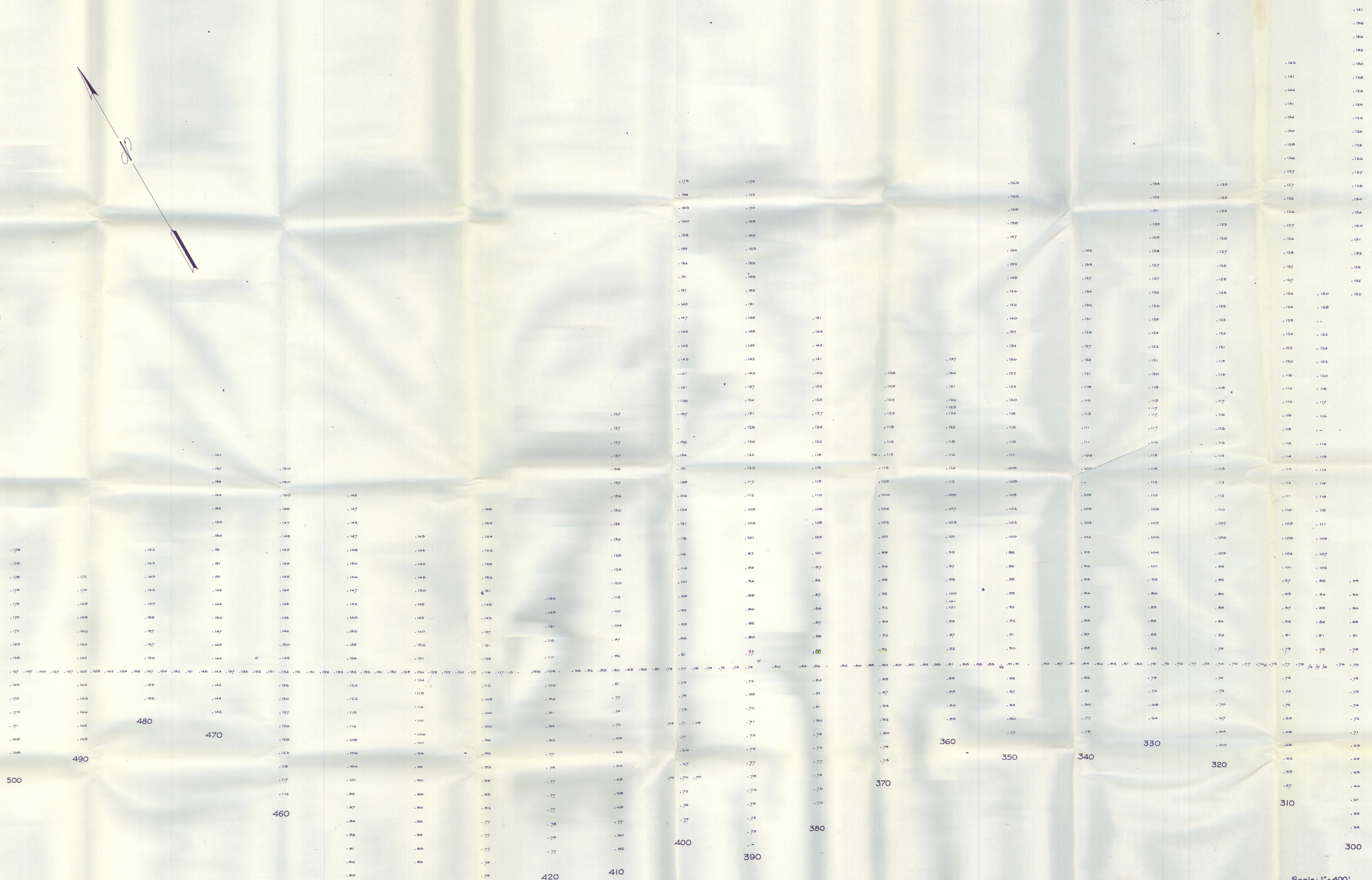
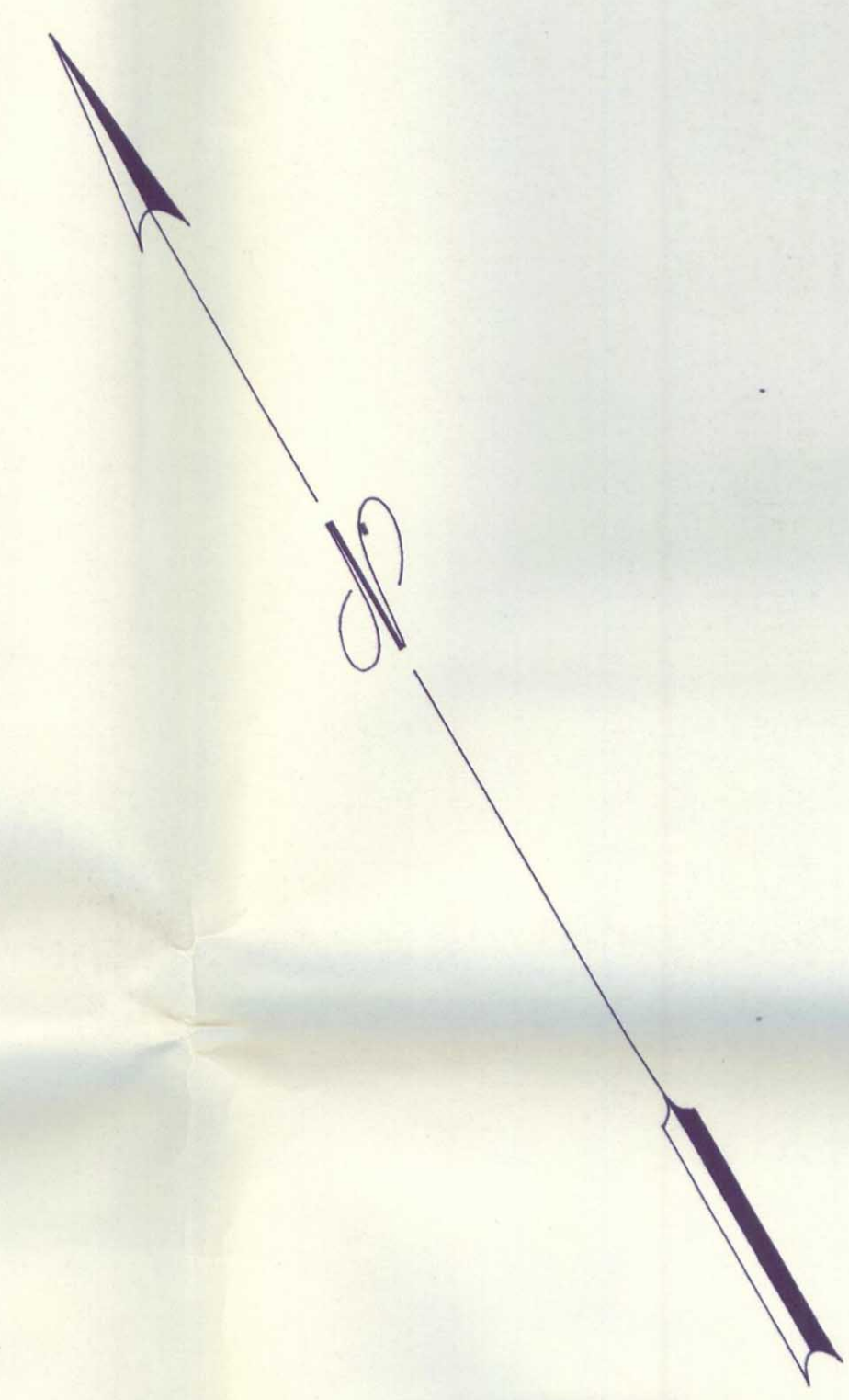
5800
5600
5400
5200
5000
4800
4600
4400
4200
4000
3800
3600
3400
3200
3000
2800
2600
2400
2200
2000
1800
1600
1400
1200
1000
800
600
400
200
0



Scale: 1" = 400'

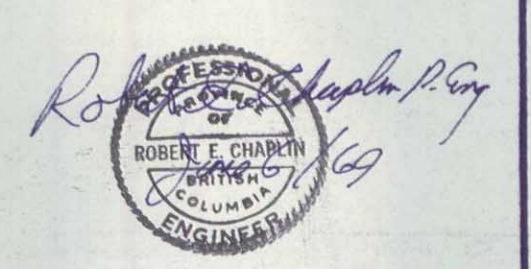
MERCURY EXPLORATIONS LIMITED
 ELEVATIONS
 Contour Interval = 50'
 BEE LAKE SECTOR
 MAP NO. 2
 PROPERTY:
 MX, AC, TIM, JET, ZAN
 CLAIMS, WHITEHORSE M.D.
 105K - 6 Y.T.
 JUNE 69

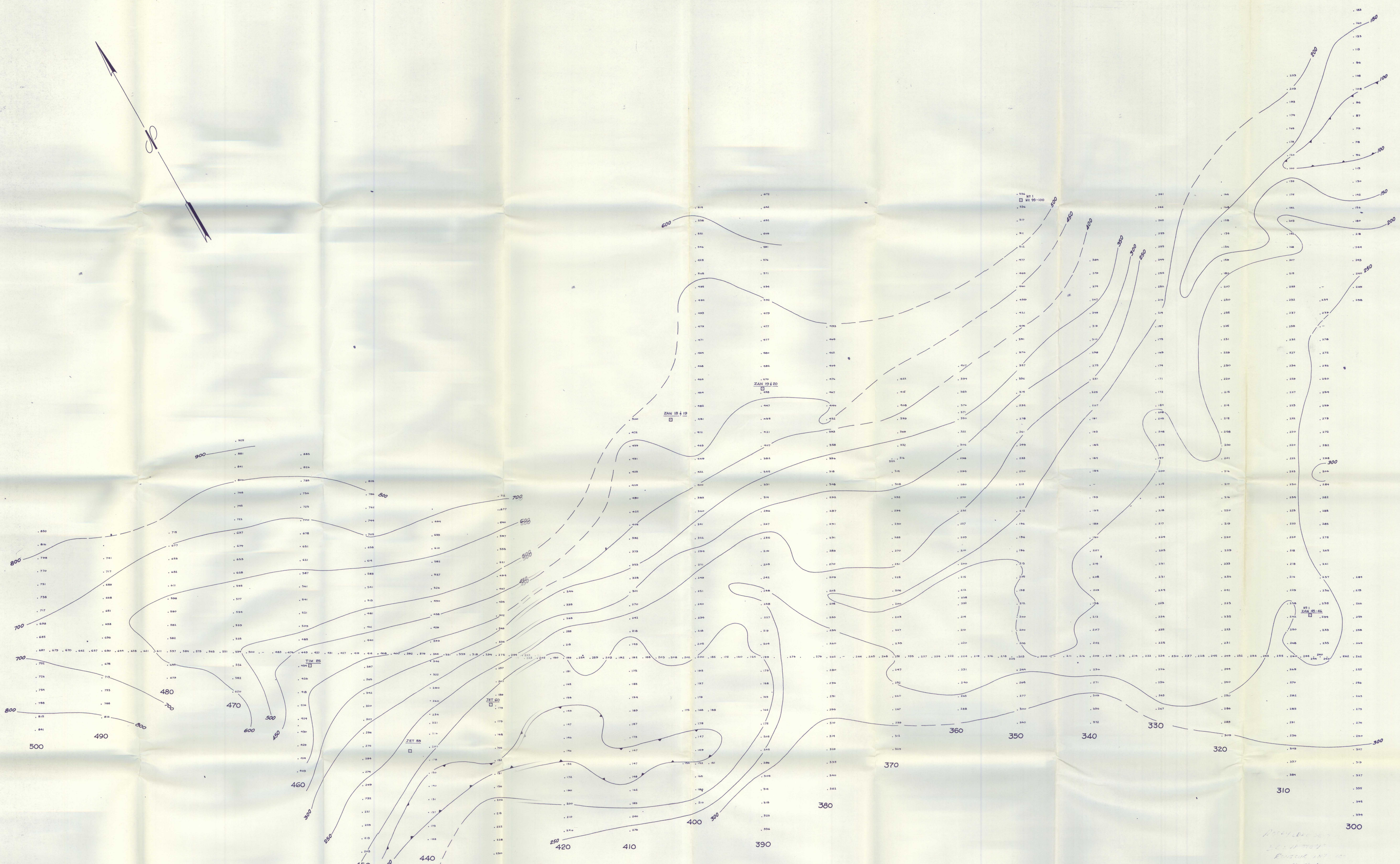
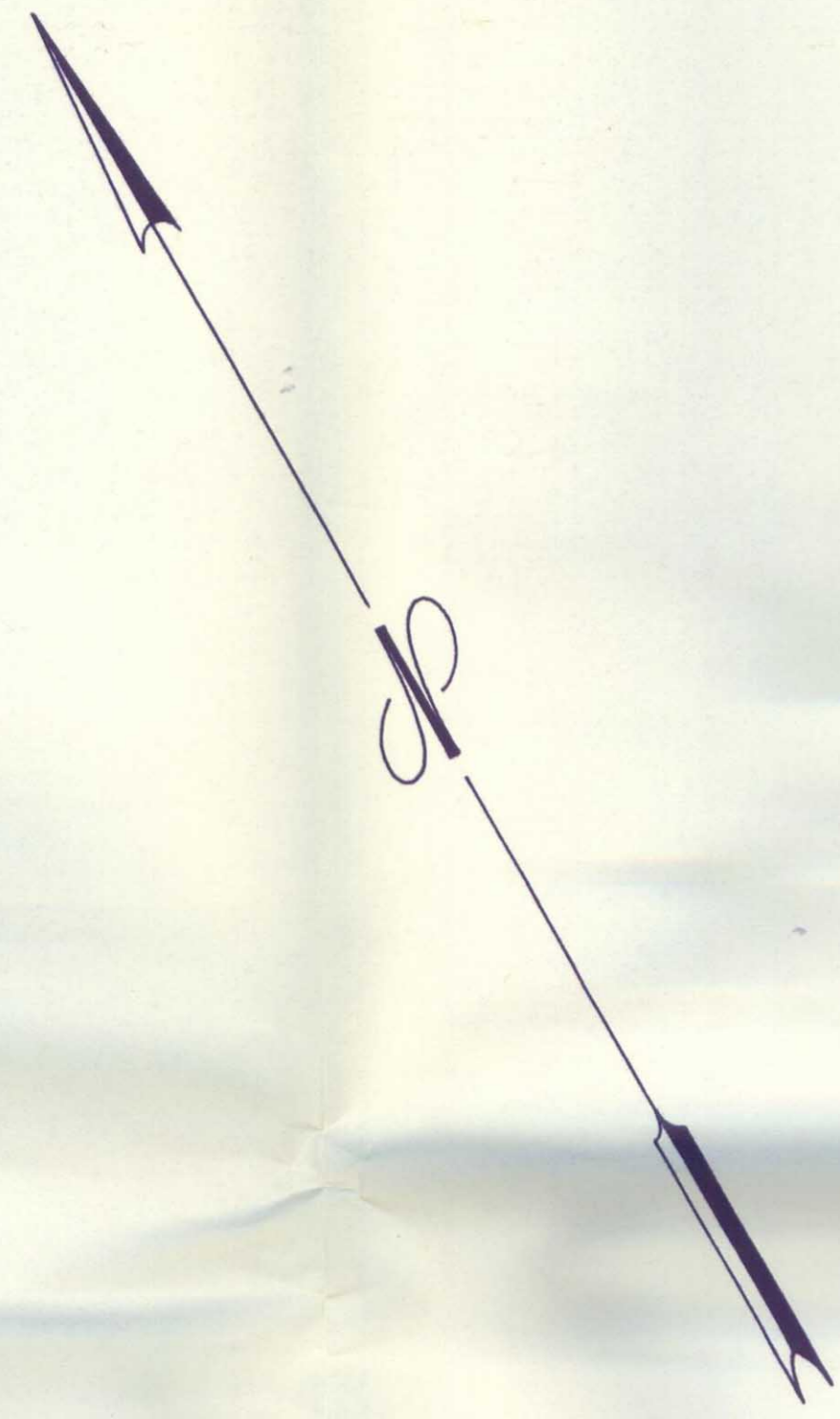




Scale: 1" = 400'

MERCURY EXPLORATIONS LIMITED
BOUGUER GRAVITY
in Gravity Units
Rocky
LAKE SECTOR
MAP NO. 3
Property:
MX AC TIM JET ZAN
Claims, Whitehorse M.D.
105R-6 Y.T.
JUNE 63

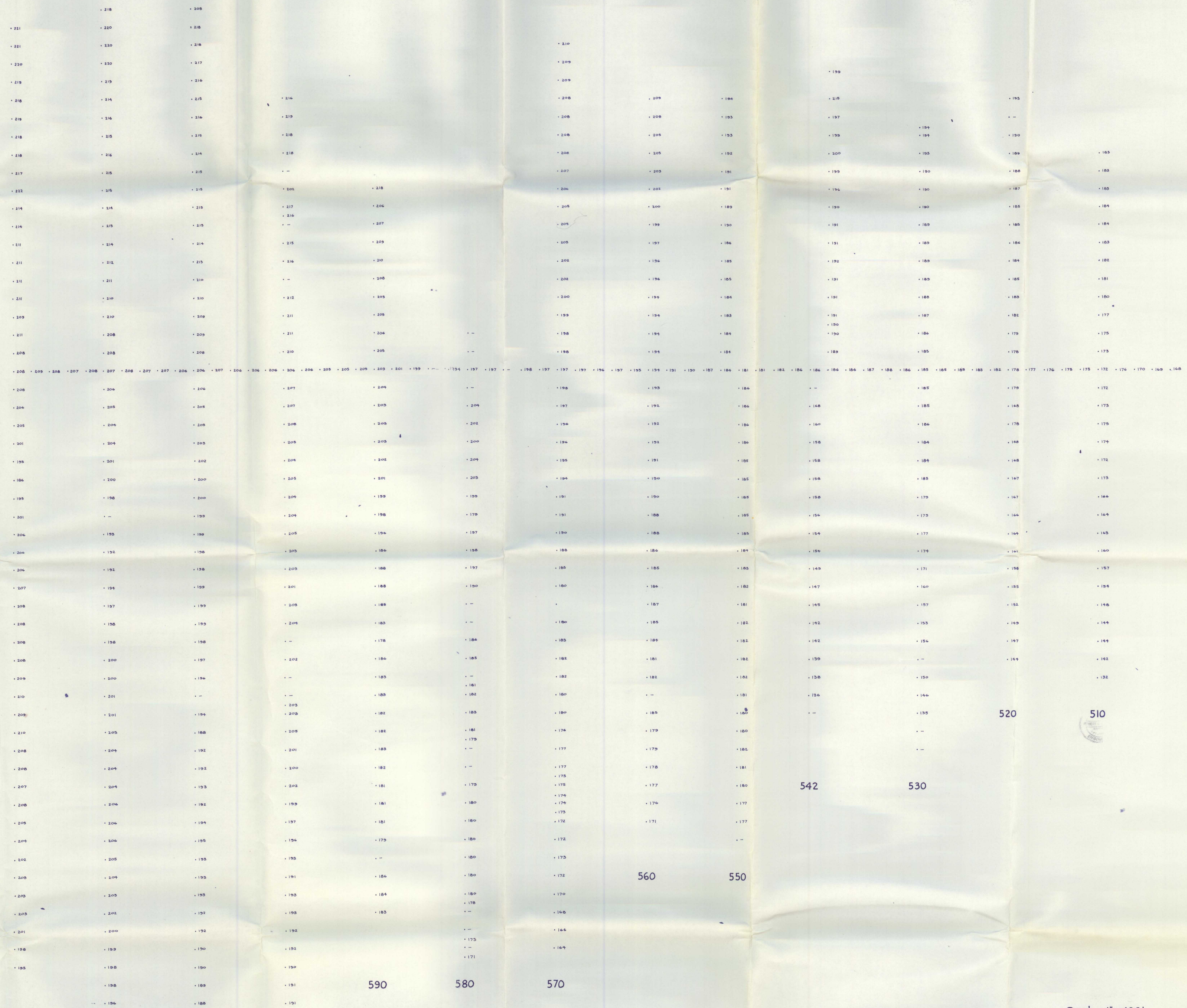




1754
50-10-70
R. J. J. J. J.
1754

MERCURY EXPLORATIONS LIMITED
ELEVATIONS
Contour Interval = 50'
ROCKY LAKE SECTOR
MAP NO. 4
Property:
MX AC TIM JET ZAN
Claims, Whitehorse M.D.
105K - 6 Y.I
JUNE 69





Scale: 1" = 400'

MERCURY EXPLORATIONS LIMITED
 BOUGUER GRAVITY
 in Gravity Units
 LAKE SECTOR
 MAP NO. 5
 Property:
 MX AC TIM JET ZAN
 Claims, Whitehorse M.D.
 105K - 6 Y.T.
 JUNE 69

Robert E. Smith
 PROFESSIONAL SURVEYOR
 ROBERT E. SMITH
 1978
 29

BEE LAKE



Scale: 1" = 400'

MERCURY EXPLORATIONS LIMITED

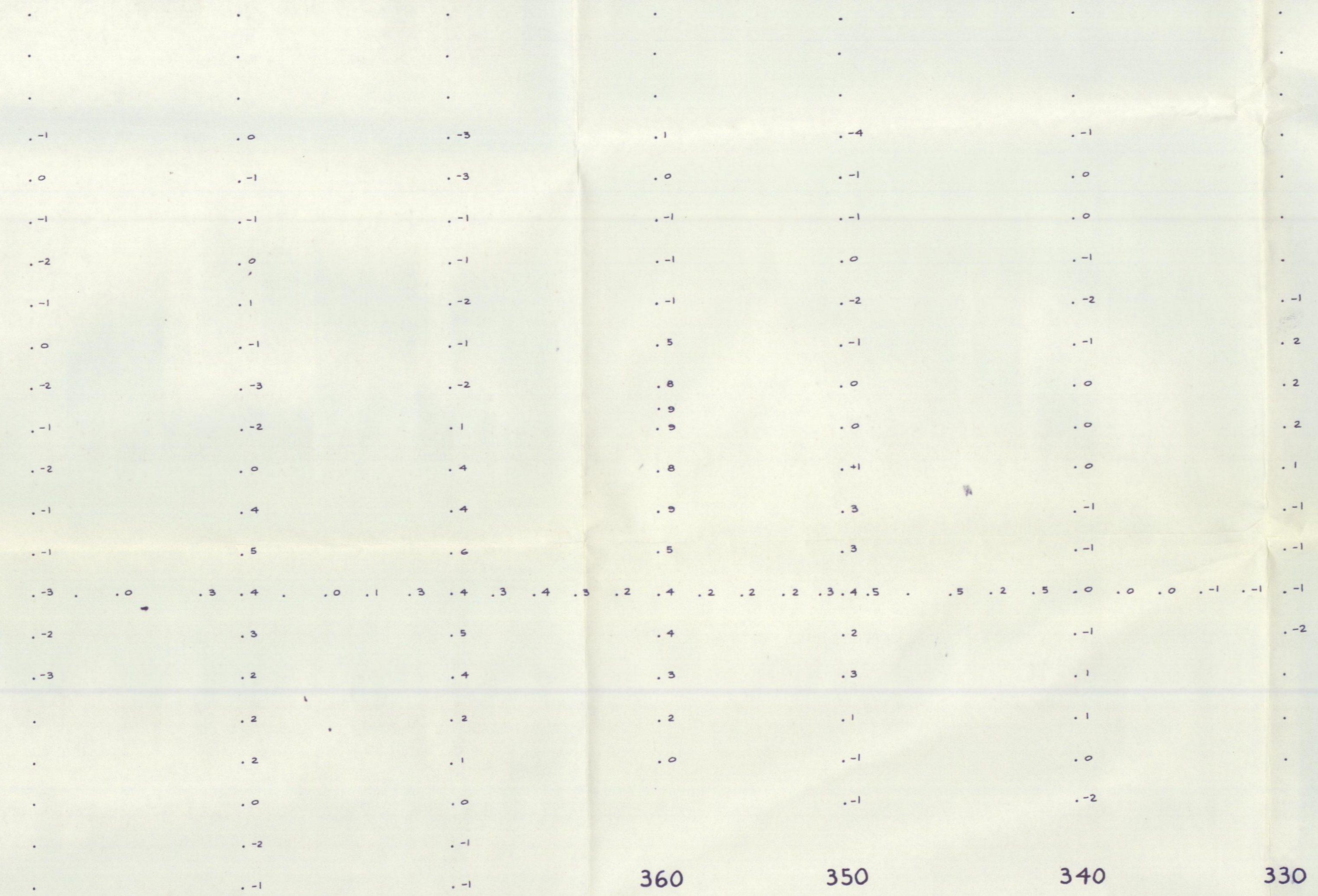
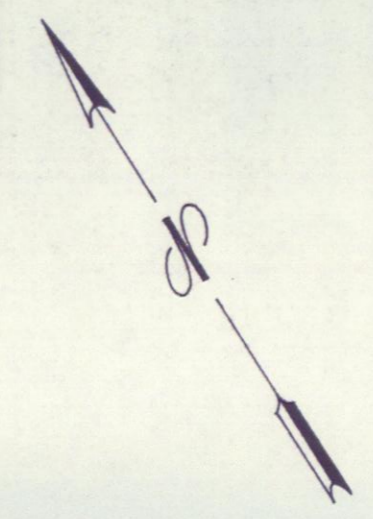
ELEVATIONS
Contour Interval: 10' - 50'

No- LAKE SECTOR
MAP NO. 6

Property:
MX AC TIM JET ZAN
Claims, Whitehorse M.D.

105 - 6 Y.T.
JUNE 69

Robert [Signature]
1969



SCALE: 1" = 400'

MERCURY EXPLORATIONS LIMITED
 BOUGUER RESIDUAL
 in Gravity Units
 ROCKY LAKE SECTOR
 MAP NO. 8
 Property:
 MX AC TIM JET ZAN
 Claims, Whitehorse M.D.
 105K-6 Y.T.
 JUNE 69



390

380

370

360

350

340

330