

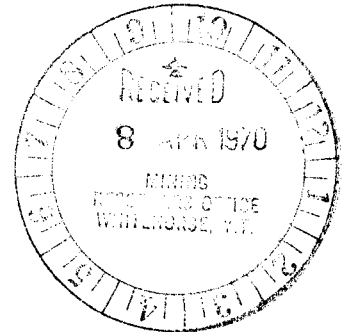


TABLE OF CONTENTS.

	Page Number
Statement of Costs	1
Affidavit in connection with costs	1A
Location	2
General	2
Geochemical Survey	2
Conclusions and Recommendations	4

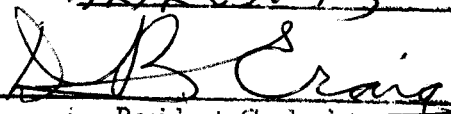
Maps

1. Claim Map
2. Copper, parts per million
3. Lead, parts per million
4. Zinc, parts per million



This report has been examined by the Geological Evaluation Unit and is recommended to the Commissioner to be considered as representation work in the amount of

\$12,209.43


Resident Geologist or
Resident Mining Engineer

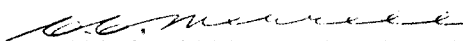
Considered as representation work under
Section 53 (4) Yukon Quartz Mining Act.


Commissioner of Yukon Territory

STATEMENT OF COSTS IN CONNECTION WITH MAPPING,
SAMPLING AND GEOPHYSICAL SURVEYING
ON THE NOM CLAIMS

Flying Time (Fixed Wing)	\$ 4,469.54
Mapping & Sampling Labor	4,215.57
Camp Operation	860.94
Board Credit	66.50
	<hr/>
Total	\$ 9,479.55
Add 25% Overhead	2,369.88
	<hr/>
Total	\$11,849.43
Estimated Assaying Charges (360 samples)	<hr/> 360.00
TOTAL EXPENDITURE	<hr/> <hr/> \$12,209.43

Certified Correct



C. C. Merrell, Chief Accountant

CANADA
YUKON TERRITORY
TO WIT:

)
)
)
I, RUSSELL T. MALMISTH
AGENT FOR HUDSON BAY EXPL & DEV CO
of Box 2480 WHITEHORSE Y.T.

do solemnly declare, -

I HAVE SPENT OR CAUSED TO BE SPENT
THE SUM OF \$12,209.43 ON THE
N.M. CLAIMS FROM JULY 22 TO DEC
31 ST 1969 AS PER STATEMENT.

And I make this solemn declaration conscientiously believing it
to be true and knowing that it is of the same force and effect as if made
under oath and by virtue of The Canada Evidence Act.

Declared before me at Whitehorse)
in the Yukon Territory, this 31 day of)
March A.D. 1970)

R. G. Reedham

A Commissioner for Oaths for Yukon Territory

Notary Public



Geochemical Survey of the Nom Claims, Mount Wilson Area, Y.T..

Location:

The Nom claims are located on the divide between the headwaters of the Pelly and Ross Rivers, approximately six miles southwest of Mount Wilson of the Yukon Northwest Territories border. A more specific location is claim sheet 105-I-13, latitude $62^{\circ}50'N$, longitude $129^{\circ}52'W$.

(See accompanying sketch)

General:

Nom 1 to 50 claims were staked on behalf of Hudson Bay Exploration & Development Company, Box 28, Toronto Dominion Center, Toronto 1, Ontario, in July 1969. They cover a geochemical anomaly located by our prospectors in 1967 and checked out in 1968.

Soil sampling and reconnaissance geological mapping was carried out for Hudson Bay Exploration & Development Company by P. Klewchuck and R. Annis, of Box 2480, Whitehorse, Y.T., under the direct supervision of R.T. McIntosh.

Some 380 soil and silt samples were collected and run for copper, lead and zinc, by Whitehorse Assay Office, using an atomic absorption spectrometer.

Geochemical Survey:

A base map on a scale of 800 feet equals one inch was prepared from aerial photographs. Two base

- 2 -

lines were run using compass bearings for direction. On the "A" grid section lines were run at 200 foot intervals and samples collected every 50 feet. The 0+00 grid was run from section 52+00W to 94+00W, with section lines at 400 foot centers and soil samples collected at 100 foot intervals.

All creeks in the claim area were sampled at frequent intervals. Additional samples were collected in the broader valleys. Their locations are plotted on aerial photographs and transferred to the accompanying plans.

Results of the sampling program are plotted on the accompanying maps in parts per million for copper, lead and zinc.

In the creeks and creek beds, samples were of active silt wherever possible. On the two grids and in the valleys samples were collected at a depth of one foot if at all possible. All samples were prepared by the Whitehorse Assay Office.

In addition to soil and silt samples 73 rock samples were taken. These were character samples of the various rock types encountered. They were run quantitatively for gold, silver, copper, lead and zinc. They were checked spectrographically for other elements. These rock samples were run by the Research Department Hudson Bay Mining & Smelting Company of Flin Flon, Manitoba.

- 3 -

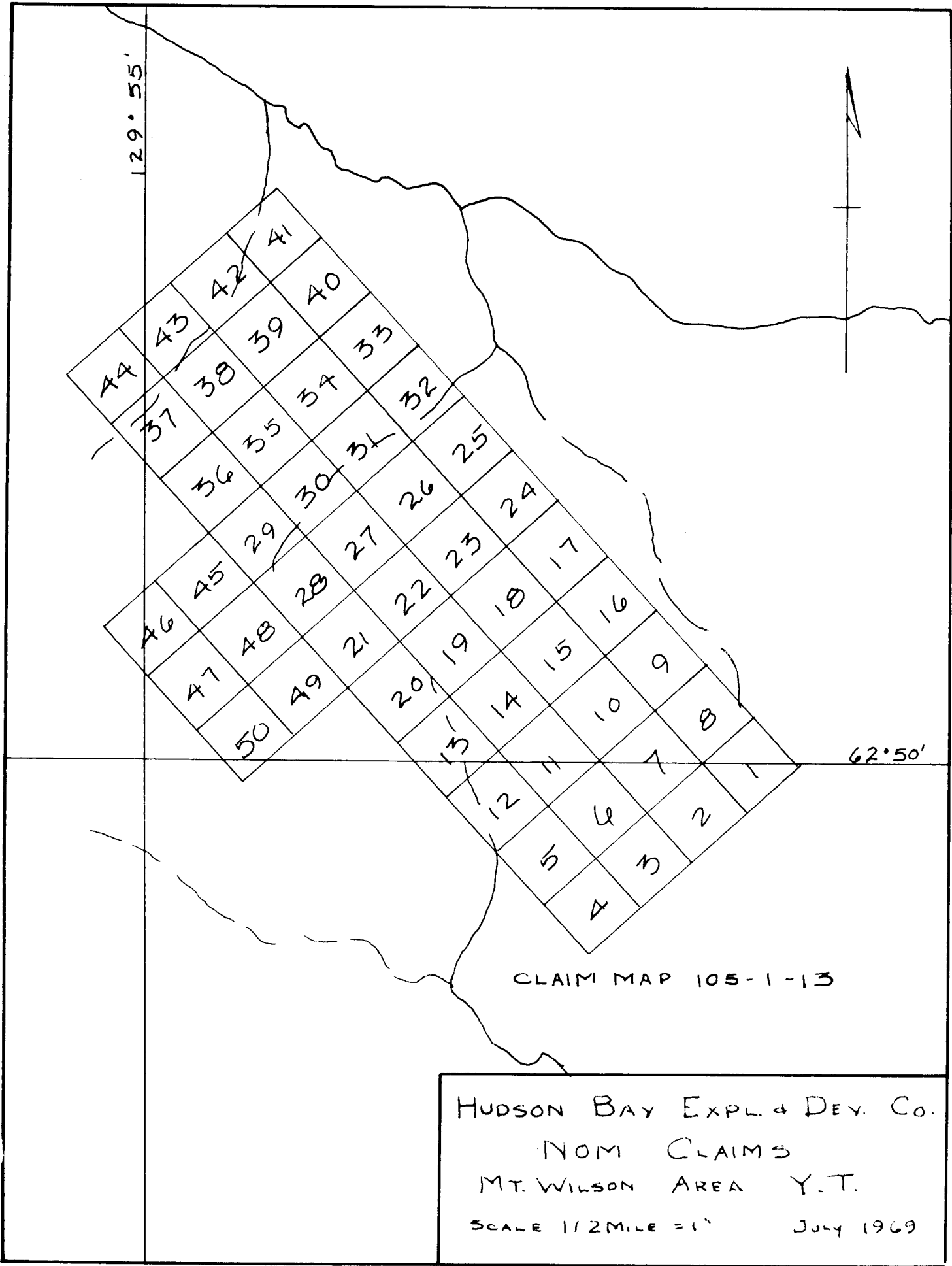
Conclusions and Recommendations:

Assuming copper values of over 250 parts per million and zinc of over 1,000 parts per million to be significant, fairly well defined anomalies are outlined. These are almost coincident for the two elements. Lead values are more scattered. The anomalies are located just over or slightly down slope from beds of baritic limestone. It is assumed therefore that low zinc values (up to 0.2%) in the limestone are responsible. Higher values, especially in the creeks are believed to result from mechanical or chemical concentration.

It is recommended that a base line be laid out and detailed sampling of Nos 26, 27, 28, 29, 30 and 31 be carried out. It is further recommended that should a drill be available in the area, one or two holes be drilled to check the anomalous zones.



R.T. McIntosh B.Sc., F.G.A.C.



44
37

43
38

42
39

41
40

36
29

35
30

34
31

33
32

46
45

48
28

27

26

47
50

21

22

23

24

20

19

18

17

16

15

14

13

12

11

10

9

5

4

6

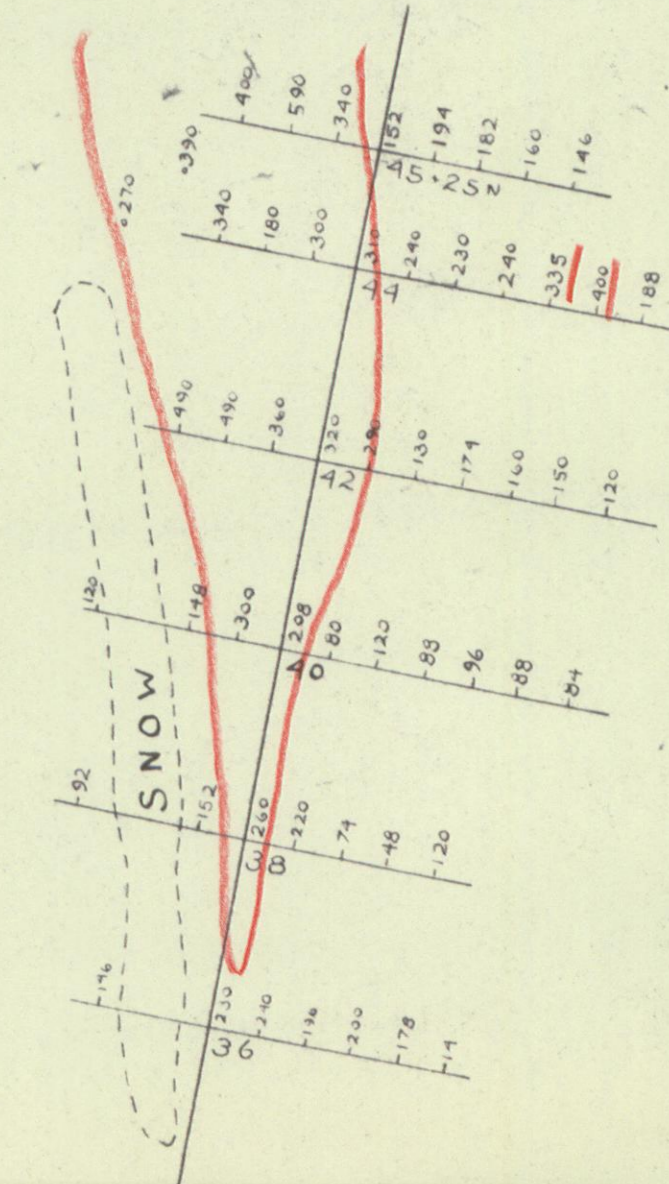
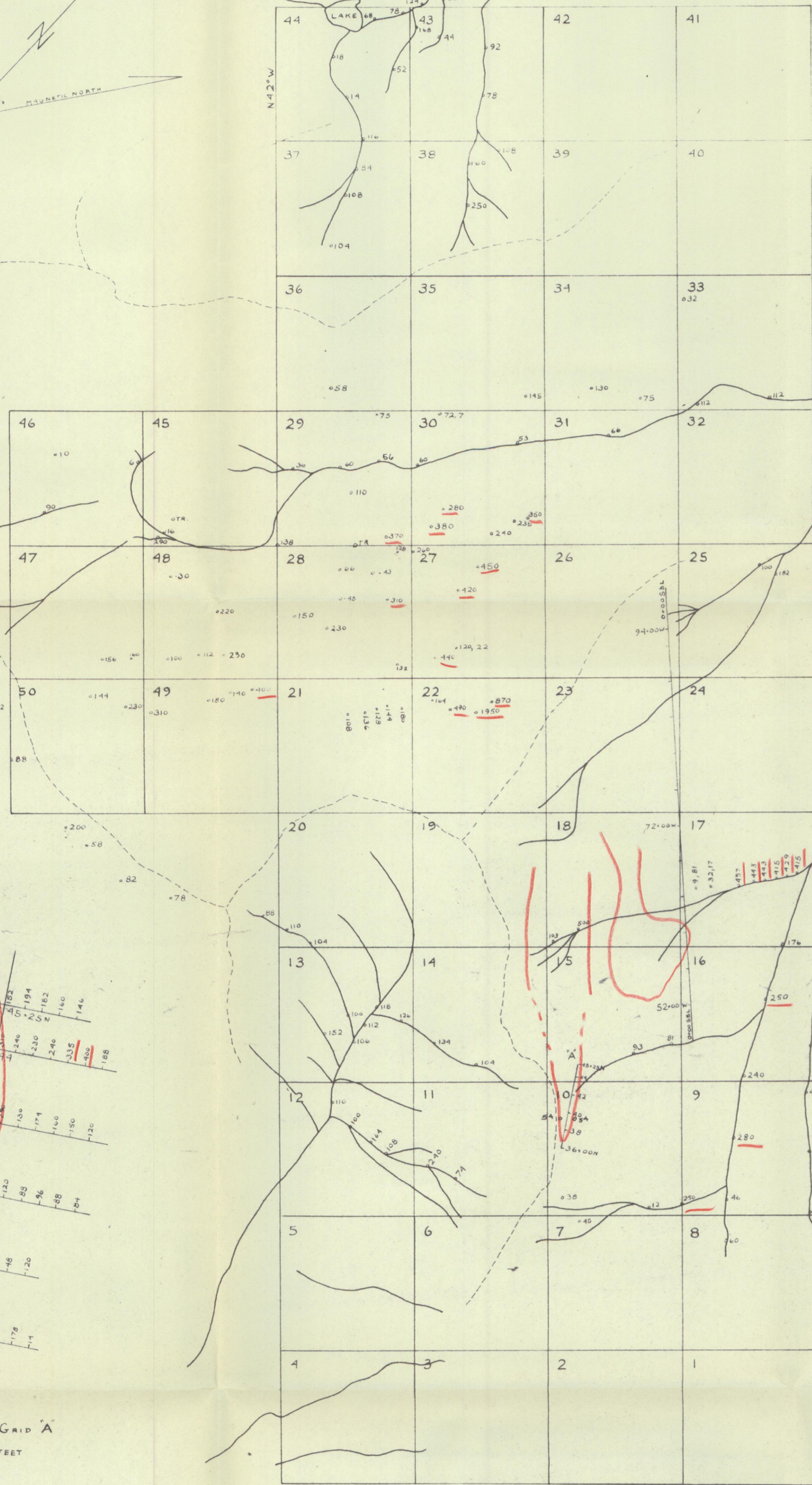
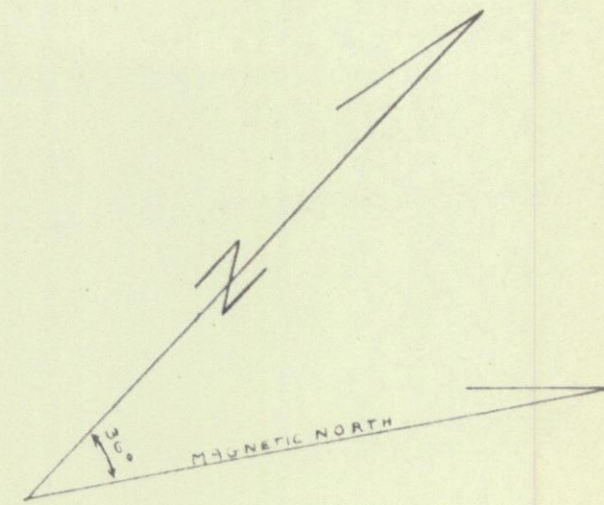
7

8

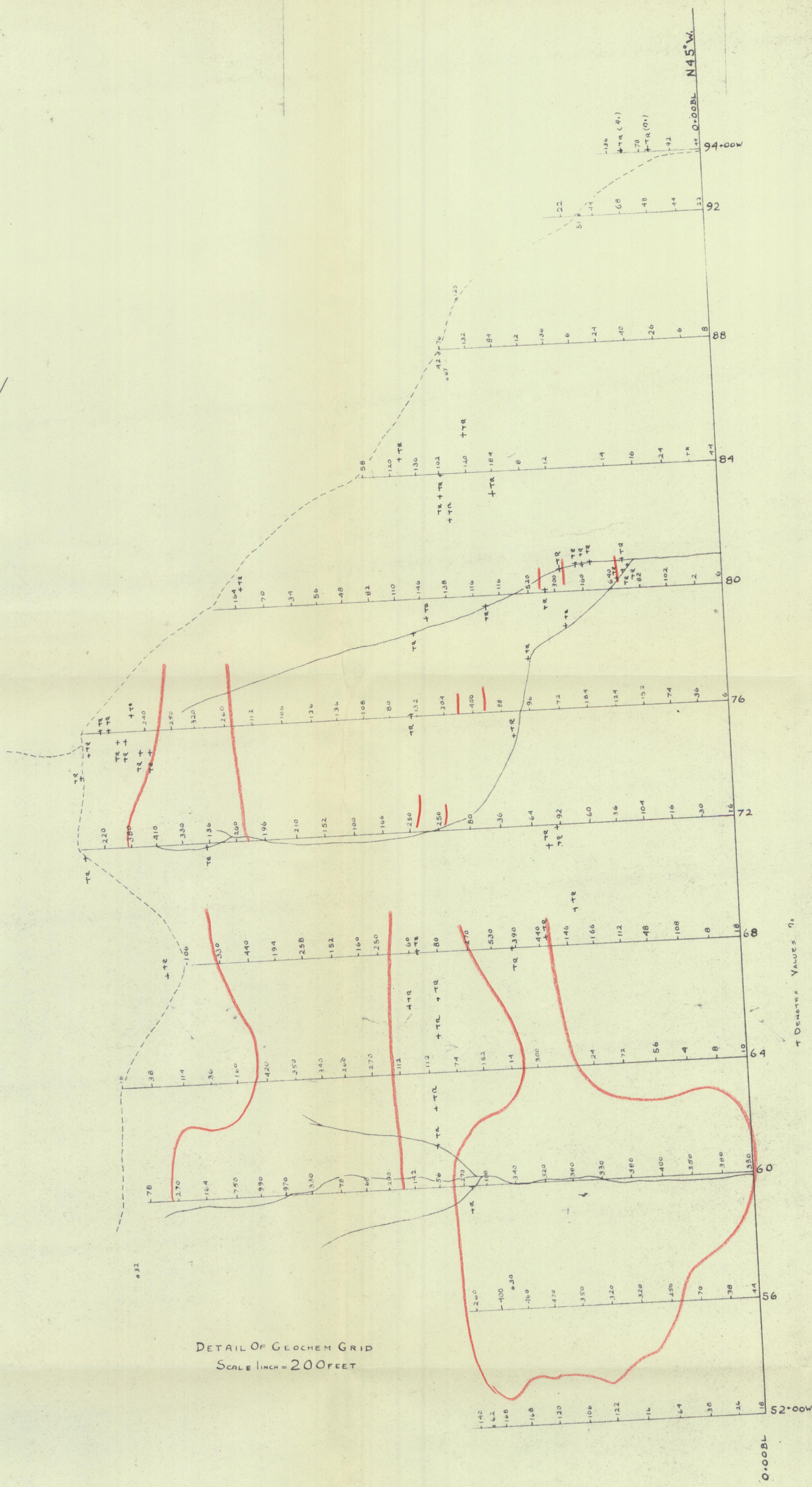
3

2

1



DETAIL OF GEOCHEM GRID 'A'
SCALE 1 INCH = 200 FEET

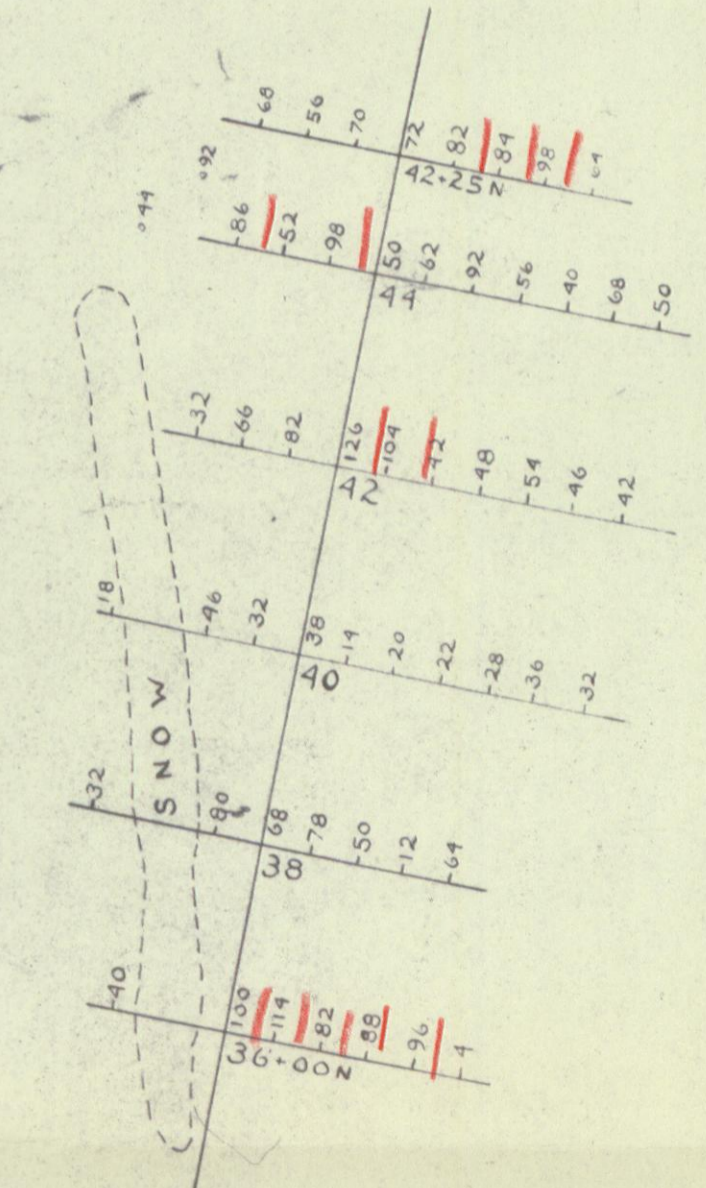
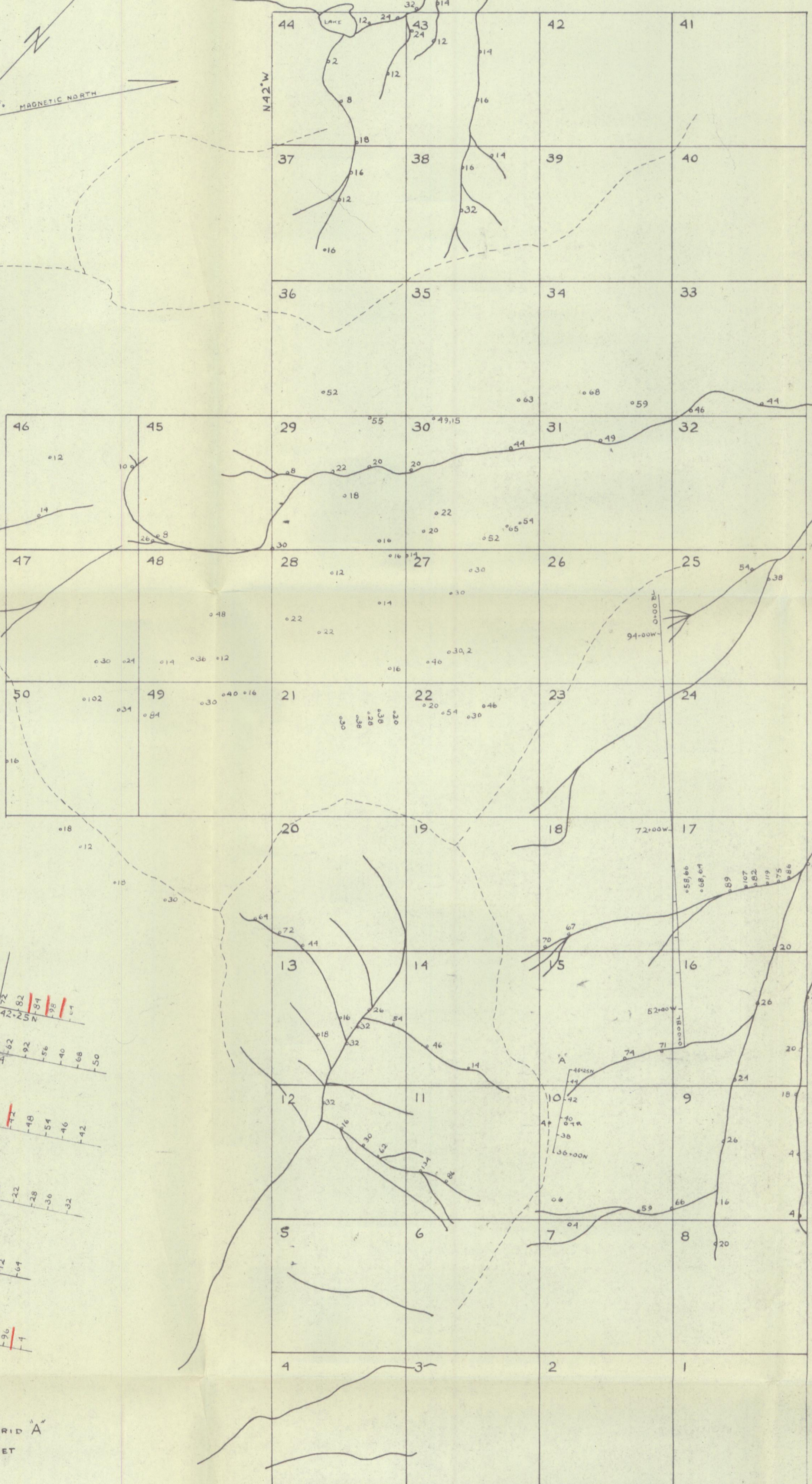
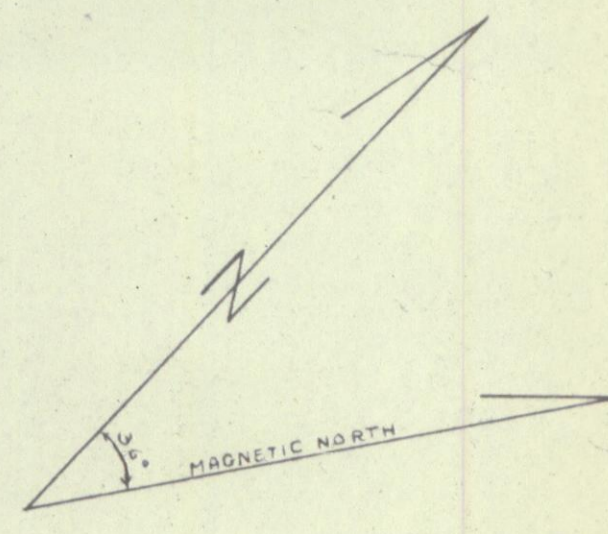


DETAIL OF GEOCHEM GRID
SCALE 1 INCH = 200 FEET

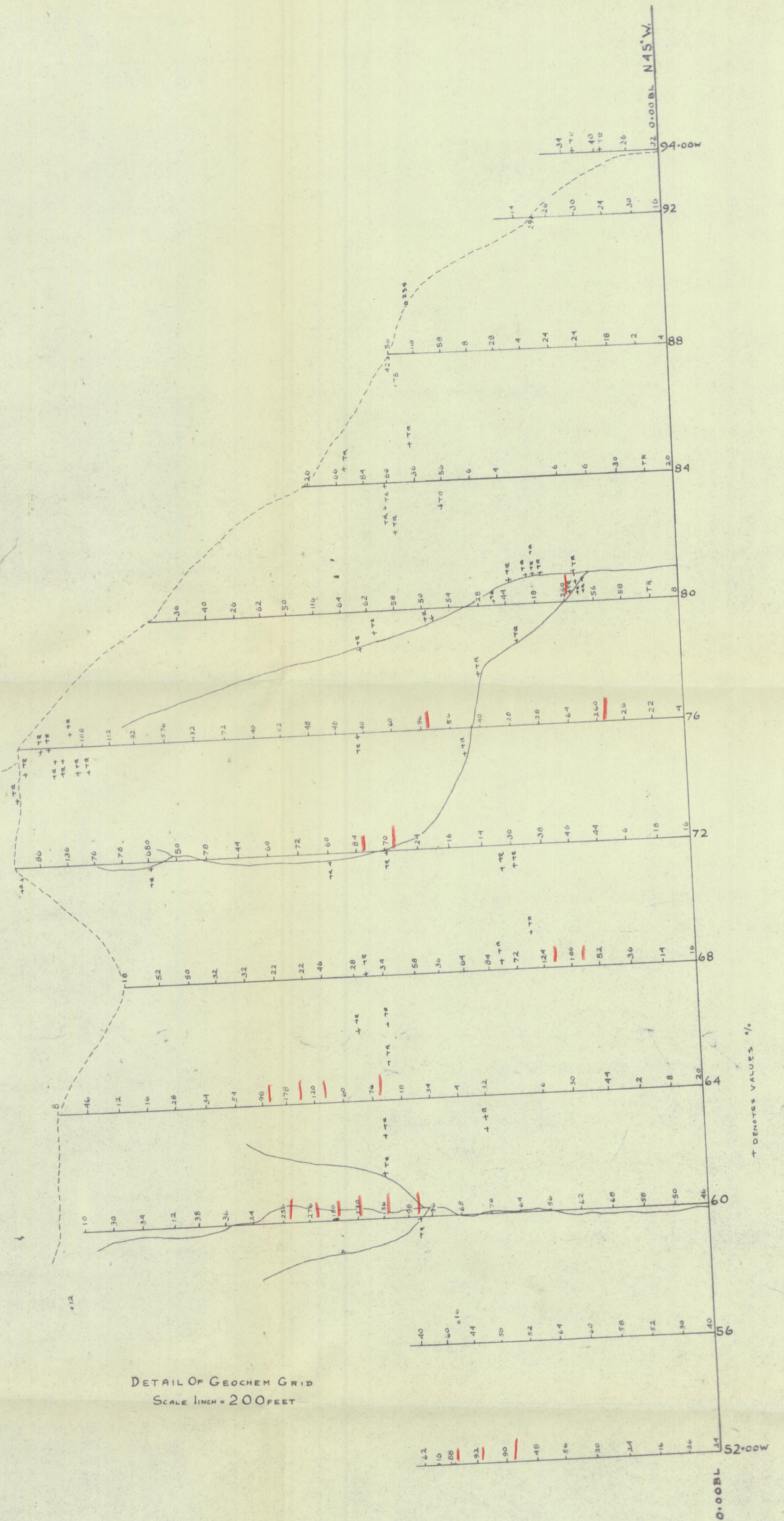
HUDSON BAY EXPLORATION
& DEVELOPMENT Co. LTD.

BLOWUP FROM RCAF PHOTO A12189-366
SCALE 1 INCH = 800 FEET
July 1969.

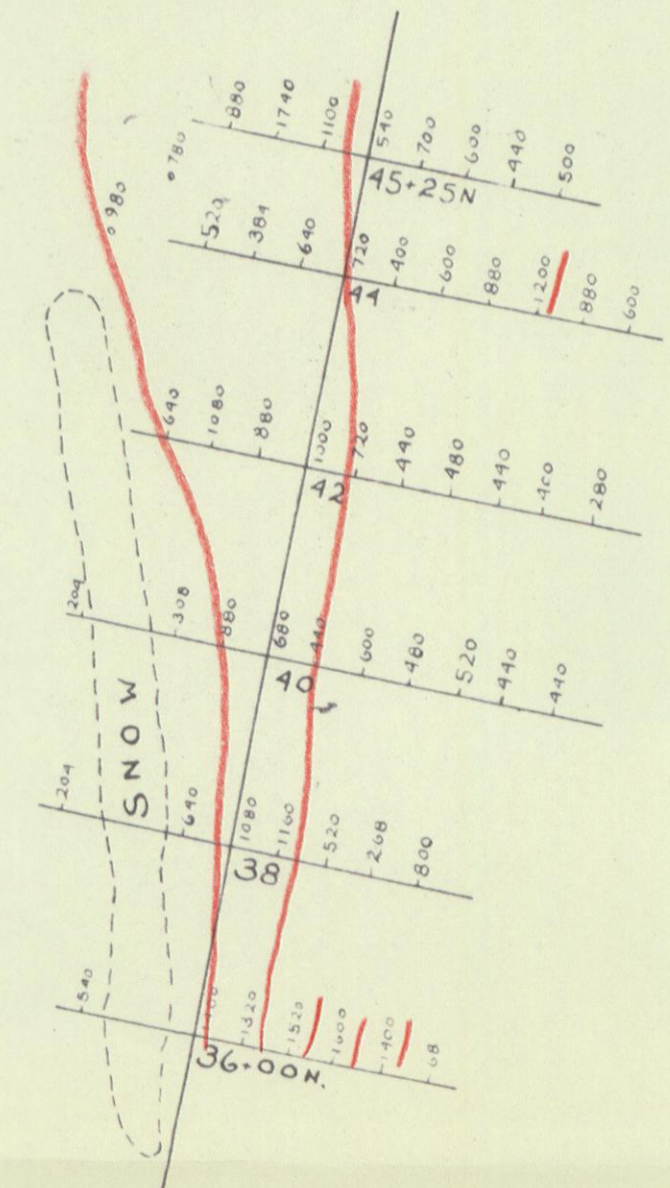
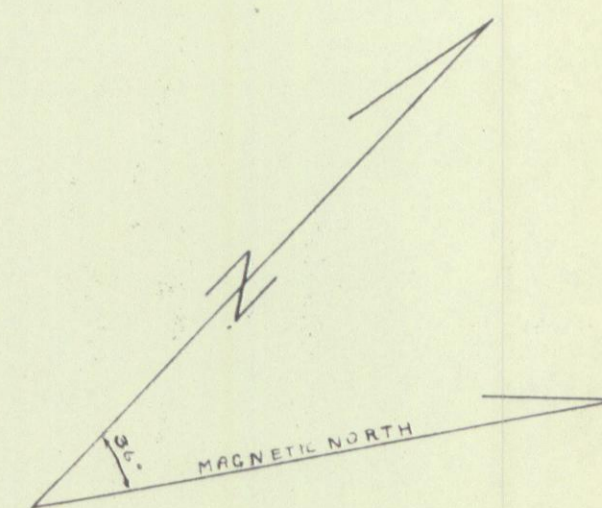
COPPER-PPM
NOM CLAIMS
SOIL SAMPLE LOCATIONS.



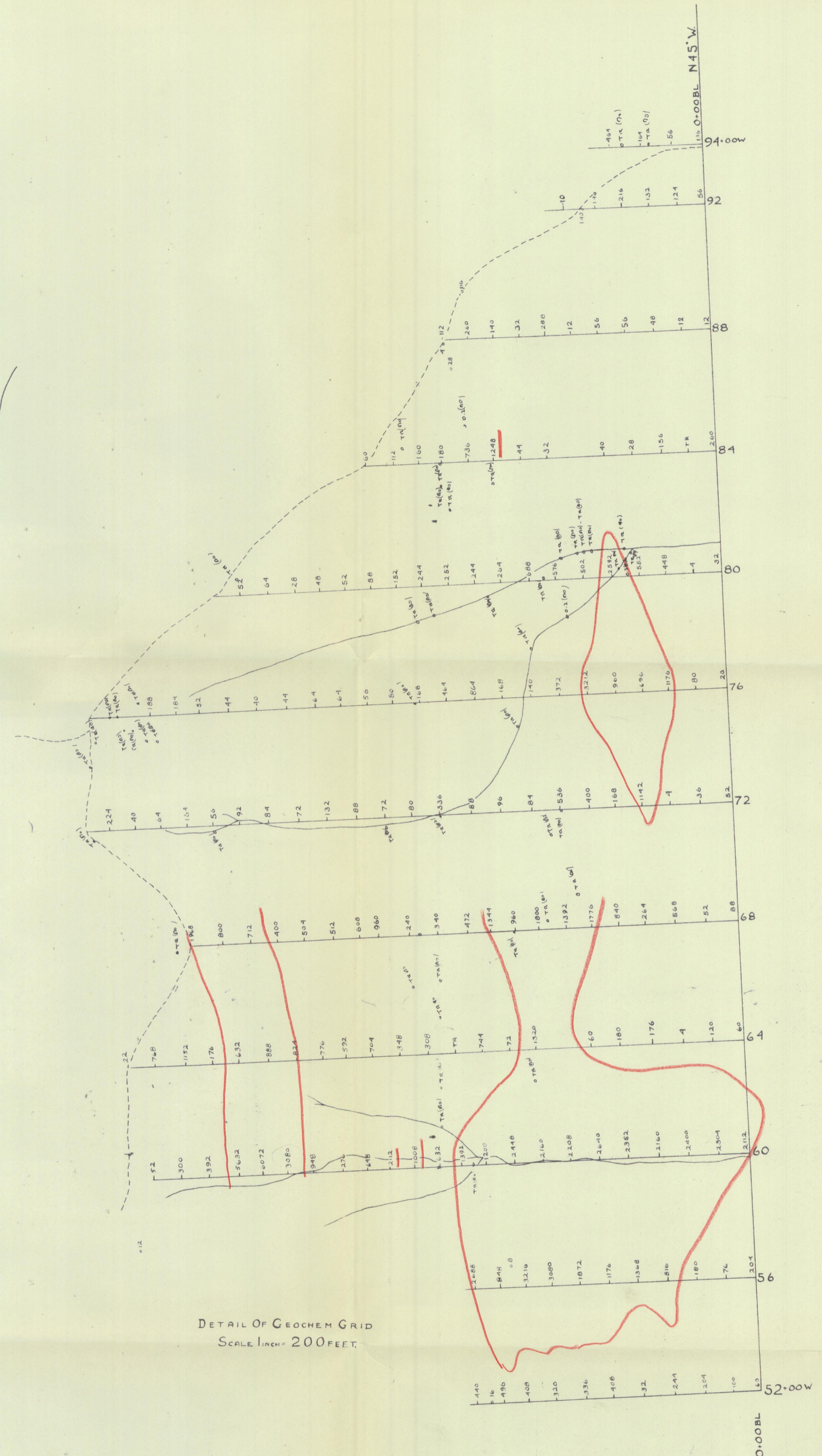
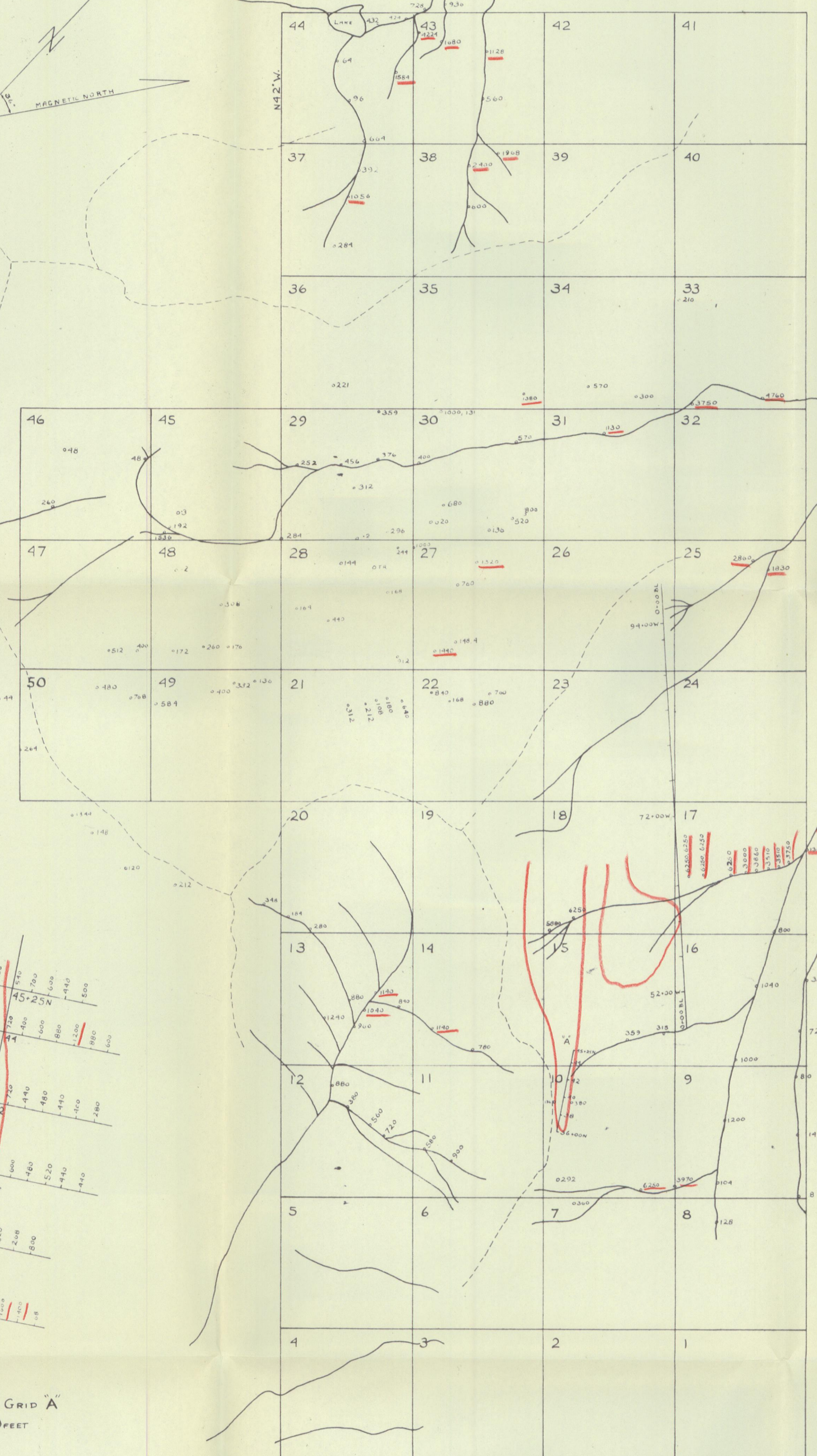
DETAIL OF GEOCHEM GRID 'A'
SCALE 1 INCH = 200 FEET



DETAIL OF GEOCHEM GRID
SCALE 1 INCH = 200 FEET



DETAIL OF GEOCHEM GRID A
SCALE 1 INCH = 200 FEET



DETAIL OF GEOCHEM GRID
SCALE 1 INCH = 200 FEET