



GEOLOGICAL AND GEOCHEMICAL REPORT

ON THE

SUN 1 to 24 MINERAL CLAIMS

MINTO AREA

WHITEHORSE MINING DISTRICT

by

Alan Beavan, B.Sc.-Party Chief

and

R. T. Heard, P. Eng.,
Assistant Exploration Manager,
United Keno Hill Mines Ltd.,
Exploration Department,
Whitehorse, Y.T.

This report has been examined by the Geological Evaluation Unit and is recommended to the Commissioner to be considered as representation work in the amount of \$ 8101.43

Resident Geologist or
~~Resident Mining Engineer~~

Considered as representation work under
Section 53 (4) Yukon Quartz Mining Act.

Commissioner of Yukon Territory

N.T. Sheet - 115-1-11

Latitude - 62°38'N

Longitude - 137°12'W

Dates - Aug. 4 to Sept. 11, 1973

Dated: September 30th, 1973

\$ 8101.43

C O N T E N T S

| | <u>Page No.</u> |
|--------------------------------------|-----------------|
| Personnel Employed | 1 |
| Introduction | 2 |
| History | 2 |
| Property | 4 |
| Location & Access | 4 |
| Physiography | 6 |
| Regional Geology | 6 |
| Geological Survey | 6 |
| (a) General Geology | 6 |
| (b) Detailed Rock Descriptions | 6 |
| (c) Structure | 7 |
| (d) Jointing | 7 |
| (e) Mineralization | 7 |
| Geochemical Survey | 7 |
| (a) General | 7 |
| (b) Pedology | 8 |
| (c) Laboratory Procedures | 8 |
| (d) Interpretation of Results | 10 |
| Conclusions | 10 |
| Recommendations | 10 |
| References | 11 |
| Appendixes: | |
| (A) Foliation Attitudes | |
| (B) Attitudes of Joints | |
| (C) Cost Summary for SUN Group. | |
| (D) Silt/Soil Sample Statistics | |
| (E) Affidavit of Costs | |

LIST OF ILLUSTRATIONS

| <u>FIGURES:</u> | <u>Page No.</u> |
|---|-----------------|
| 1. Location Map (Dwg. No. 14-1) 1 inch = 40 miles | 3 |
| 2. SUN Claim Group (Dwg. No. 14-2) 1 inch = $\frac{1}{2}$ mile | 5 |
| 3. Histogram of Copper Results | 9 |

| <u>MAPS:</u> | <u>LOCATION</u> |
|--|-----------------|
| 14-3 Claim Map 1 inch = 400 ft. | in pocket |
| 14-4 Surface Plan 1 inch = 400 ft. | in pocket |
| 14-5 Geology 1 inch = 400 ft. | in pocket |
| 14-6 Copper Plot 1 inch = 400 ft. | in pocket |

PERSONNEL EMPLOYED:-

Geological Mapping Performed by:

Mr. Alan R. Beavan,
405 Main Street,
Whitehorse, Y.T.

Geochemical Sampling by:

Mr. Robert L. Jones,
P. O. Box 4566,
Whitehorse, Y.T.

Mr. Yves Gingras,
5280 Des Tilleuls,
Montreal, P.Q.

Mr. Greg D. Lee,
1916 - 45th St. S.W.,
Calgary, Alberta

Geochemical Analysis by:

Wesfrob Mines Ltd.,
Geochemical Laboratory,
1314 West 71st. Ave.,
Vancouver 14, B.C.

Assaying by:

Whitehorse Assay Office,
P. O. Box 4518,
Whitehorse, Y.T.

Helicopter Support by:

Mr. Charles C. Ford,
31 Alsek Road,
Whitehorse, Y.T.

Supervised by:

R. E. VanTassell, Fellow-G.A.C.,
Exploration Superintendent,
United Keno Hill Mines Ltd.,
405 Main St.,
Whitehorse, Y.T.

R. T. Heard, P. Eng.,
Assistant Exploration Manager,
United Keno Hill Mines Ltd.,
405 Main Street,
Whitehorse, Y.T.

INTRODUCTION:-

The Sun Group of 24 mineral claims, Y62699-Y62722 inclusive, were optioned by United Keno Hill Mines Limited from Terence W. Boylan of Whitehorse, Yukon Territory on August 1st, 1973.

Between August 4th and September 11th, 1973 geological mapping and soil sampling programmes were conducted over this property.

To facilitate soil sampling and aid in the surveying and location of the Sun Claim lines and posts a baseline was cut due east (declination =30°E) from the number 2 posts of the DEF 29 and 30 mineral claims. The DEF claims have been surveyed by a Dominion Land Surveyor and their location will be known accurately when their respective Lot Numbers have been assigned. This main baseline was established over a length of 7500 feet and covers some ground between the DEF group and the Sun Group which has been staked on behalf of United Keno Hill Mines as the DEF 85 and 86 fractions. Two other offset baselines were established to the east from 75+00 E and 10+00 W (3900 feet) and from 75+00 E and 19+00 S (900 feet).

Soil samples were taken at 100' intervals along flagged lines established by compass and chain methods. Lines were established at 300 foot spacings along baselines in a north-south direction.

Geological mapping was conducted by traversing in between the flagged geochem lines on east-west lines spaced at 100 foot intervals.

The claim lines were located, re-blazed, and chained into the geochemical grid to establish the claim positions relative with a known point i.e., #2 posts of DEF 29 and 30. The claim tags were all attached to their respective claim posts.

HISTORY:-

The Carmacks Map Sheet was mapped by H. S. Bostock of the Geological Survey of Canada between the years 1931 to 1934. In 1936, his work was published as Memoir 189, Carmacks District.

In 1904 a short adit was driven into a copper showing west of the Yukon River approximately 4 miles from the SUN group in a S-E direction. The site and area immediately surrounding the adit was staked as the COIN Group in September of 1970.

Also, in 1970 Silver Standard Mines stream sediment sampled the area and picked up one anomalous reading which was to lead them to and precipitate their staking of the MINTO Claim Group. Several other major companies silt sampled and ran reconnaissance type exploratory programmes through the general area.

In July of 1971, both Silver Standard and United Keno Hill Mines staked claims in the area, the former as protection for their anomalous geochem result and the latter because of the location of copper staining by prospecting.

The SUN Group of claims was staked as tie-on ground to the east of and adjoining United Keno Hill Mines DEF Group, and were optioned by United Keno Hill on August 1, 1973.

PROPERTY:-

The SUN Group consists of 24 contiguous mineral claims as follows:

| <u>Claim Name</u> | <u>Record No.</u> | <u>Location Date</u> | <u>Recording date</u> | <u>Expiry Date</u> |
|-------------------|-------------------|----------------------|-----------------------|--------------------|
| SUN 1-16 | Y62699-Y62714 | 11 Sept. 1971 | 6 Oct. 1971 | 6/10/73 |
| SUN 17-24 | Y62715-T62722 | 12 Sept. 1971 | 6 Oct. 1971 | 6/10/73 |

Certificates of work were filed under numbers Q61008-Q61017.

Form E Grouping notices were filed as follows:

No. 4653Q filed Oct. 13/72 grouped SUN 4,6,8-14,20-24
and No. 4654Q filed Oct. 13/72 grouped SUN 1-3,5,7,15-19

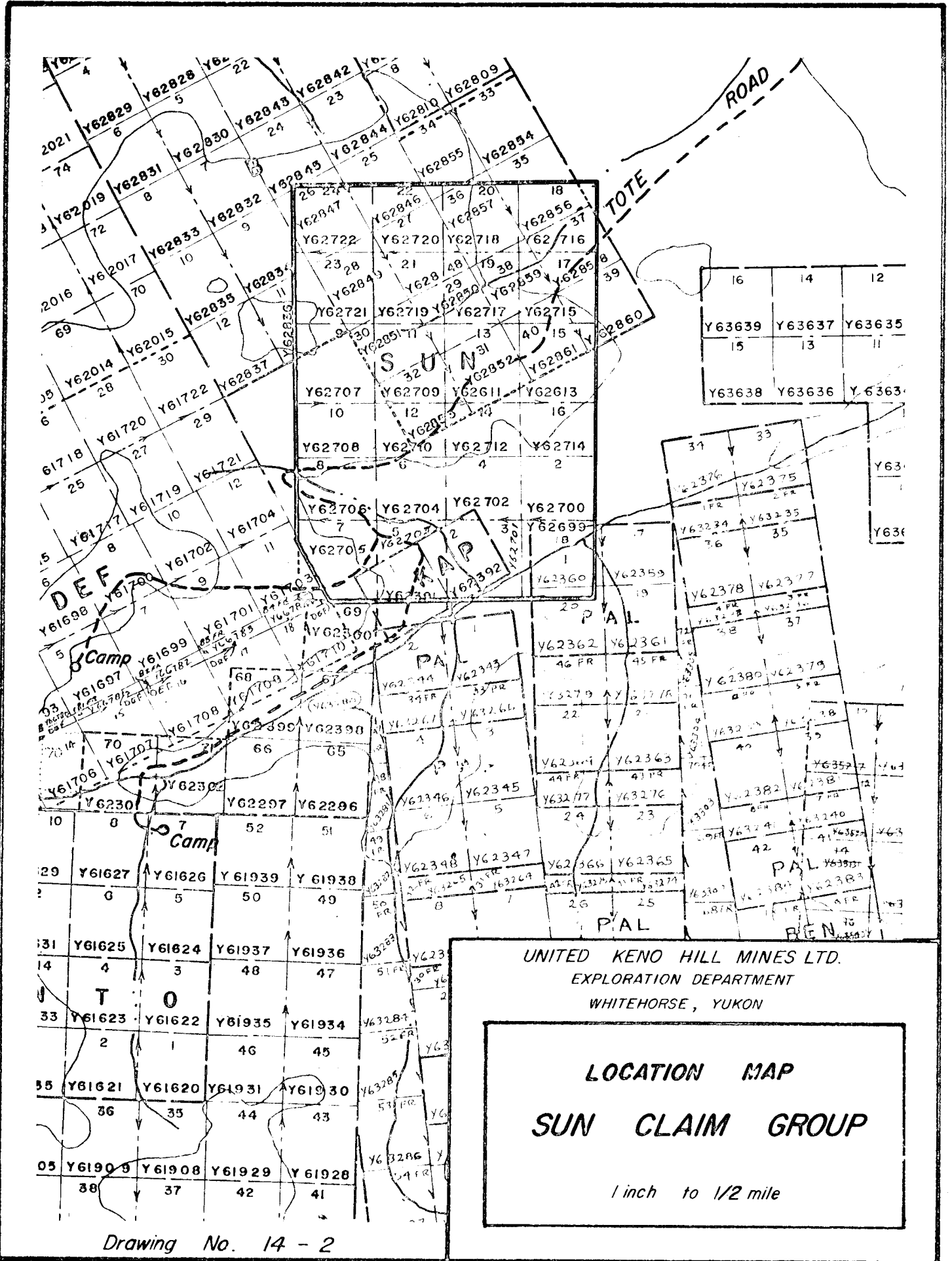
LOCATION and ACCESS:-

The property is located some 50 and 150 miles northwest of Carmacks and Whitehorse respectively. It lies approximately 4 miles due west of the Yukon River at a point some 13 miles downstream from the Minto emergency airstrip. Latitude 62°38' north and Longitude 137°12' west. N.T.S. Sheet 115-1-11.

The SUN Claims are bounded on the north by the B and ROD Claims; to the east by parts of the ROD and PAL and BEN Claims; to the south by the KAPS and part of the PAL and BENS and by part of the MINTO Claims; and to the west by the DEF and parts of the B Claims.

A winter tote road built in February, 1972 to connect the MINTO Camp to the Yukon River, passes through the SUN Group, however, it is not in use.

Access to the property was by Hiller 12E helicopter, working from the Minto airstrip.



PHYSIOGRAPHY:-

The property is situated on the northeast side of the Dawson Range and lies within the Yukon Plateau Province as mapped by Bostock (1936). It consists of steep sided, flat topped ridges with open forest type vegetation, and muskeg valleys with swampy vegetation. Outcrop is very limited, occurs mostly along the ridge tops and is estimated at about one percent.

REGIONAL GEOLOGY:-

The SUN Claim Group lies within a northwesterly trending intrusive complex, comprised of gneisses, granodiorites, quartz monzonites, minor monzonites, granites, granite porphyries, fine grained intrusives and pegmatite dykes.

The intrusive complex is bounded by volcanic rocks.

GEOLOGICAL SURVEY:-

(a) General Geology:

The only rock types encountered were a poorly foliated biotite, granite porphyry and associated aplites and pegmatites. This granite is thought to be associated with and similar to the Upper Jurassic or later granitic rocks described by Bostock, southwest of the Lewes River (Carmacks District, Yukon, Memoir 189, 1936, Pages 37-38).

(b) Detailed Rock Descriptions:

(1) Biotite Granite Porphyry - This rock is tan/grey weathering to a depth of several inches and is white/grey on fresh surface. Phenocrysts of orthoclase are large (0.5 to 1.75 inches with an average length of 0.75 inches), pink, with euhedral, tabular, or square shapes. On the weathered surface, phenocrysts stand out in relief. The groundmass is coarse grained, equigranular, and granitic in composition.

The mineral composition is essentially quartz (15-20%); biotite (15-20%); and feldspars (60-70%). The percentage of phenocrysts in the rock varies from 5 to 15%. Some phenocrysts contain small inclusions of biotite.

Other associated minerals are epidote, magnetite and hornblende. Epidote occurs as an alteration product of biotite. The degree of alteration is variable, but, generally 5 to 10% of the biotite has been altered to epidote. Epidote also occurs as a coating on some joint surfaces but this is rare.

The rocks are moderately magnetic due to magnetite associated with the biotite. On weathered surface the magnetite produces a tan coloration to the rock and small pods of limonite remain.

Hornblende was identified in a few outcrops but occurs less than 1%.

The foliation is defined by a sub-parallel alignment of biotite flakes but is very poorly developed. Foliation strikes are best measured on the weathered surfaces, while the dips are often

very difficult to establish. In some outcrops it appears as though the phenocrysts also show a sub-alignment congruent with the biotite foliation. In other outcrops however, the phenocrysts are randomly oriented.

- (2) Aplite - This rock is tan/pink coloured, fine to medium grained, equigranular, and sucrose textured.

The mineral composition is quartz (25-30%); feldspars (60-65%) and biotite (less than 5%). Garnets are also found in some samples. In one small vein, small (approximately 0.2 inches) euhedral, red garnets were discovered. The biotite in the aplite shows a subparallelism and this foliation corresponds to the attitudes of the foliation in the granite.

- (3) Pegmatite - The pegmatites consist of very coarse grained pink feldspar and white quartz. Biotite is generally present but in very small percentages.

(c) Structure:

Foliation - The strike of the foliation is consistent over the whole area, being NE-SW. The dip angle could not generally be measured, but, where it was established was found to be steep to vertical. A list of foliations is included in the Appendix A.

- (d) Jointing - The joint attitudes were measured but a study of preferred orientation has not been undertaken. A list of joint attitudes and character is included in the Appendix, B. Two joint sets can be picked out by visual examination. One set strikes W30E and dips moderately steeply to the southeast. This joint set is well developed and has a spacing of 1 to 2 feet where noted. The other prominent joint set has a strike of S50°E and a vertical dip. This set is moderately well developed.

(e) Mineralization:

No mineralization was found either in outcrop or as float in the area examined. Some minor green staining was noted in several soil samples collected from the NE part of the grid which may or may not be malachite staining.

GEOCHEMICAL SURVEY:-

(a) General:

A main baseline was cut for 7,500 feet with cross lines established along it at 300 foot intervals. Two offset baselines were flagged and blazed at 75E and 10N and at 75E and 19S. Cross lines were established along these at 300 foot intervals also. The cross lines were sampled at 100 foot intervals.

1955 samples were collected and analyzed for copper.

99% of the area is soil covered. On ridge slopes the overburden is thought to be quite thin, but the muskeg valleys are thought to contain deep overburden, the environment of which, is more restrictive to the deposition of trace elements in the soils.

The "B" horizon was sampled in 99% of the sample locations with about 1% of the samples collected from the "A" horizon.

(b) Pedology:

On steep slopes the A horizon is very thin (less than 1 inch). The A2 leached horizon is absent. Below this is a brown to brownish red B horizon, which is very clay rich, mixed with sand or sand and gravel. Samples taken in this environment are usually dry to slightly moist.

In the valleys or in gently dipping slopes the A horizon is much thicker, sometimes up to 20 inches containing humus and organic muck. Below the A horizon is the B horizon comprised of moist to wet clay, sand and gravel, or gravelly alluvium deposits.

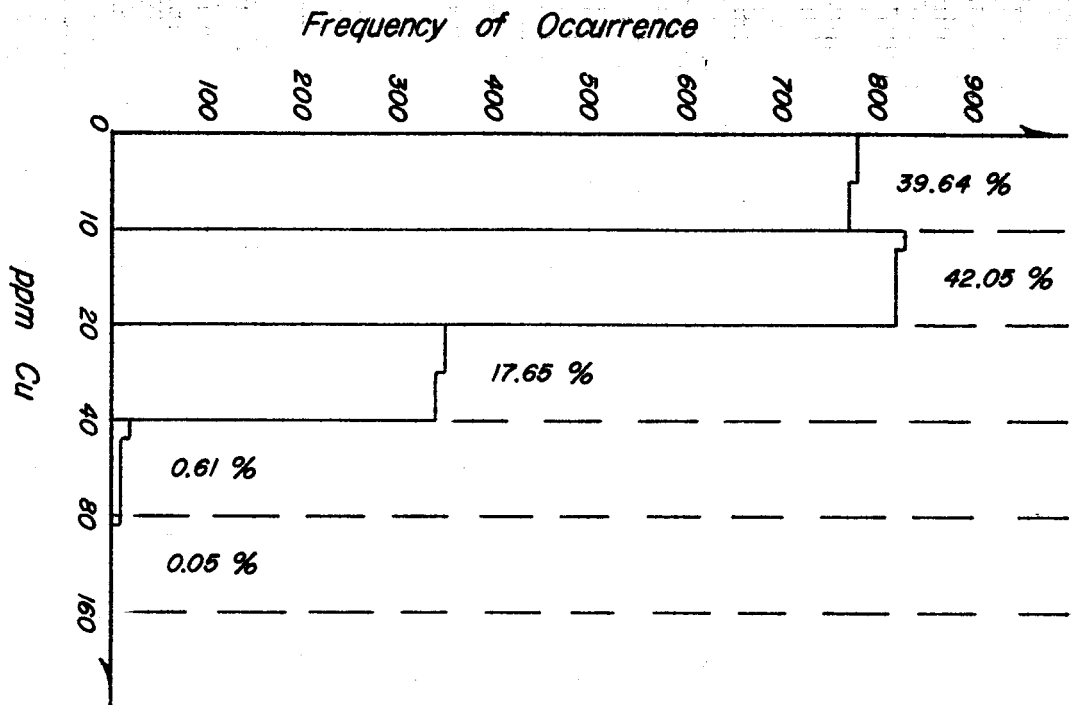
In some instances in the muskeg areas organic samples had to be collected because of permafrost. These were a mixture of humus and clay, were black, and very wet. These were identified on data sheets as A horizon organic samples and will probably be of little use in geochemical prospecting.

(c) Laboratory Procedures:

The laboratory techniques and methods used to analyze these samples were set up and supervised by Dr. I. L. Elliot, Chief Geochemist, Falconbridge Nickel Mines Ltd., Vancouver, B.C.

(i) Copper Analysis - The samples were dried in a gas-fired hot air drier and then hand screened through 80 mesh nylon screens.

1 gram of sample was weighed into a calibrated pyrex test tube and boiled for one hour with 10 mls. of 10% nitric acid. After cooling the volume was restored to 10 mls. to compensate for evaporation loss. The sample was then filtered through Whatman No. 1 Filter Papers. The filtrate was aspirated into the atomic absorption unit and the copper concentration was read at the appropriate wave length.



HISTOGRAM - Cu results

1. Geology: A tote road will be constructed from the Yukon River to the DEF & MINTO Drill camps and will cross the SUN Group. Any outcrops located along this road will be mapped and sampled.

2. Geophysics: Magnetometer and EM-16 (V.L.F.) surveys will be conducted over the claim group using the established grid.

3. Diamond drilling: A drill program will be conducted to test geophysical anomalies.

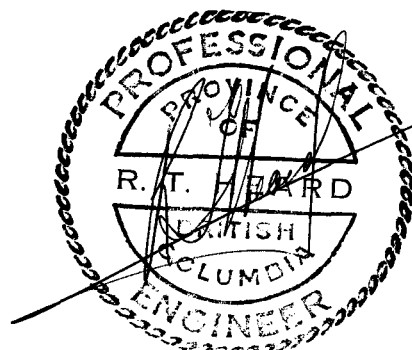
REFERENCES:-

Bostock, H. S., 1936: Carmacks District, Memoir 189.

Joy, R. J., 1971: Carmacks Prospecting, U.K.H.M. Files.

Joy, R.J. & VanTassell, R. E. ,1971: Geological, Geochemical and Geophysical Report on the DEF 1-32 Mineral Claims, Dark Creek Area, Whitehorse Mining District.

R. J. Joy, 1973-Feb. 28; Geological and Geochemical Report on the DEF 1-24 Mineral Claims, Minto Area, Whitehorse Mining District.



Expiry Date: May 2, 1974

APPENDIX A

FOLIATION ATTITUDES

| <u>OUTCROP #</u> | <u>STRIKE</u> | <u>DIP</u> |
|------------------|---------------|------------|
| 25 | 10° | |
| 30 | 135° | 65°SW |
| 31 | 125° | |
| 35 | 115° | |
| 36 | 170° | |
| 40 | 170° | 77°SW |
| 43 | 170° | 65°SW |
| 48 | 160° | |
| 50 | 125° | |
| 54 | 105° | 90° |
| 57 | 120° | |
| 58 | 115° | |
| 69 | 155° | 90° |
| 73 | 125° | 56°SW |
| 74 | 145° | |
| 76 | 140° | |
| 77 | 135° | |
| 79 | 155° | |
| 80 | 145° | |
| 81 | 140° | |
| 86 | 140° | |
| 87 | 130° | |
| 88 | 145° | |
| 89 | 148° | 75NE |
| 92 | 135° | 90° |
| 94 | 140° | |
| 95 | 160° | |
| 98 | 135° | |
| 99 | 140° | 90° |
| 100 | 145° | |
| 103 | 140° | |
| 105 | 140° | |
| 106 | 150° | |
| 107 | 145° | |
| 109 | 139° | 90° |
| 112 | 155° | |
| 114 | 155° | |
| 115 | 135° | |
| 120 | 160° | |
| 123 | 140° | |
| 126 | 165° | |
| 127 | 140° | |
| 130 | 150° | 90° |
| 131 | 137° | |
| 135 | 153° | |
| 136 | 133° | |
| 137 | 145° | 90° |

APPENDIX B

ATTITUDES OF JOINTS

| <u>OUTCROP #</u> | <u>STRIKE</u> | <u>DIP</u> | <u>DEVELOPMENT</u> | <u>SPACING</u> |
|------------------|---------------|------------|--------------------|----------------|
| 9 | 29° | 64°SE | peg.vein filled | |
| 13 | 30° | 73°SE | good | 1to2 ft. |
| 13 | 125° | 90° | moderate | |
| 14 | 31° | 77°SE | good | 1 to 2 ft. |
| 14 | 135° | 90° | moderate | |
| 15 | 125° | 90° | | |
| 16 | 39° | 66°SE | good | 2 ft. |
| 16 | 138° | 90° | good | 1 to 4 ft. |
| 17 | 150° | 45° NE | | |
| 18 | 140° | 19°NE | poor | |
| 18 | 15° | 90° | poor | |
| 22 | 130° | 90° | peg. vein | |
| 25 | 0° | 55°W | good | 3 to 4 ft. |
| 25 | 95° | 50°N | moderate | |
| 26 | 144° | 90° | | 6 in. |
| 26 | 38° | 65°SE | | 1 ft. |
| 28 | 105° | 90° | peg.vein1½"thick | |
| 34 | 120° | 70° | | 6 in. |
| 36 | 40° | 90° | aplite vein | |
| 37 | 100° | 35°NE | | |
| 41 | 45° | 90° | good | 2 in. |
| 45 | 130° | 45°SW | poor | |
| 46 | 125° | 42°SW | | |
| 46 | 147° | 90° | peg. dike | |
| 51 | 155° | 70°NE | | |
| 52 | 135° | 90° | good | |
| 52 | 45° | 65°SE | poor | |
| 54 | 20° | 80°SE | poor | |
| 55 | 65° | 45°NW | | |
| 56 | 125° | 90° | good | |
| 57 | 50° | 84°N | apl.dike2"thick | |
| 58 | 25° | 90° | | |
| 64 | 175° | 70°E | | |
| 67 | 38° | 69°SE | | |
| 73 | 90° | 60°NW | epidote coated | |
| 79 | 70° | 55°SE | poor | |
| 80 | 30° | 75°NW | poor | |
| 80 | 130° | 90° | poor | |
| 81 | 132° | 75°SW | | 1 ft. |
| 82 | 30° | 80°SE | | |
| 84 | 0° | 45°W | | |
| 85 | 30° | 70°NW | | |
| 86 | 45° | 90° | good | 6 in. |
| 89 | 18° | 80°NW | good | |
| 92 | 34° | 55°SE | | |
| 94 | 36° | 60°NW | good | 1 ft. |
| 95 | 55° | 90° | excellent | 1 ft. |

Appendix B Cont'd.-

| | | | | |
|-----|------|-------|----------------------|-------|
| 98 | 30° | 90° | good | |
| 99 | 30° | 60°NW | good-epidote coating | 1 ft. |
| 100 | 35° | 75°NW | | |
| 101 | 125° | 75°SW | | |
| 110 | 155° | 78°NE | poor | |
| 111 | 15° | 90° | | |
| 115 | 45° | 35°SE | poor | 6 in. |
| 116 | 145° | 90° | poor | |
| 124 | 50° | 90° | | |
| 125 | 45° | 90° | good | 2 ft. |
| 125 | 150° | 90° | poor | |
| 129 | 152° | 90° | poor (curved) | |
| 131 | 50° | 90° | | |
| 131 | 140° | 90° | | |
| 133 | 21° | 90° | | |
| 134 | 148° | 90° | good | 2 ft. |
| 134 | 35° | 90° | poor | |
| 134 | 155° | 43°SW | poor | |
| 137 | 65° | 10°SE | poor | 4 in. |

APPENDIX C

COST SUMMARY FOR SUN GROUP

(A) LABOUR:

| | | |
|-----------------------------------|----------|------------------|
| Party Chief 38 Days @ \$750./mo. | \$950.00 | |
| Assistant 38 Days @ \$525./mo. | 665.00 | |
| Soil Sampler 34 Days @ \$450./mo. | 510.00 | |
| Soil Sampler 4 Days @ \$525./mo. | 70.00 | |
| | | <u>\$2195.00</u> |

(B) GEOCHEMICAL ANALYSIS:

| | | |
|----------------------------|---------|----------------|
| 1955 Samples @ \$1.50 each | 2932.50 | |
| | | <u>2932.50</u> |

(C) AIRCRAFT SUPPORT:

| | | |
|--------------------------------|---------|----------------|
| Hiller 12E - 9.7 Hrs. x \$140. | 1358.00 | |
| Fuel Costs (including oil) | 146.00 | |
| | | <u>1504.00</u> |

(D) CAMP OPERATION & MISC. SUPPLIES:

| | | |
|---|--------|----------------|
| Food | 664.80 | |
| Freight | 409.34 | |
| Supplies (Camp, Prospecting, Geochemical, Etc.) | 395.79 | |
| | | <u>1469.93</u> |

TOTAL COST

\$8101.43

Note: The above costs do not include supervision, overhead on labour, camp and equipment rentals, final drafting and report preparation.

SILT/SOIL SAMPLE STATISTICS

Project: 14 - SUN GROUP Dates of Program: August 4th
to Sept. 11th, 1973

Number of Samples Collected: 1955

Metals Analyzed: Cu

Samplers: Robert L. Jones

Yves Gingras

Greg D. Lee

Man days: 76

Samples collected / man - day: 25.7

| | Values in ppm | No. in Range | % of Total | Values in ppm | No. in Range | % of Total |
|-----------|---------------|--------------|------------|---------------|--------------|------------|
| Pb | | | | 0-10 | 775 | 39.64 |
| | | | | 11-20 | 822 | 42.05 |
| | | | | 21-40 | 345 | 17.65 |
| | | | | 41-80 | 12 | 0.61 |
| | | | | 81-160 | 1 | 0.05 |
| | | | | | | Cu |
| Zn | Values in ppm | No. in Range | % of Total | Values in ppm | No. in Range | % of Total |
| | | | | | | |
| Ag | Values in ppm | No. in Range | % of Total | Values in ppm | No. in Range | % of Total |
| | | | | | | |
| | | | | | | Mo |

A F F I D A V I T

I, Robert E. Van Tassell, of Whitehorse, in the Yukon Territory,
Exploration Superintendent, do solemnly declare:

1.

That I am duly appointed agent of United Keno Hill Mines Limited,
and except where otherwise stated have a personal knowledge of the
facts and matters herein declared and swear to the costs listed
in Appendix C of this report.

And I make this solemn declaration conscientiously believing it to
be true and knowing that it is of the same force and effect as if
made under oath and by virtue of the Canada Evidence Act.

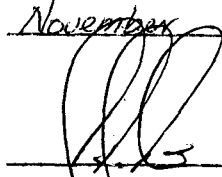
Declared before me at

Whitehorse, in

the Yukon Territory,

this 6th day of

November 1973.





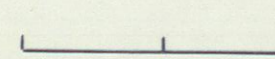
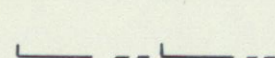
Notary Public



Robert E. Van Tassell



LEGEND

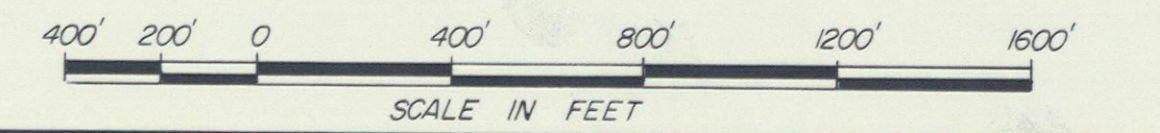
-  Location Line
-  Claim Boundary
-  Main Baseline
-  Offset Baseline

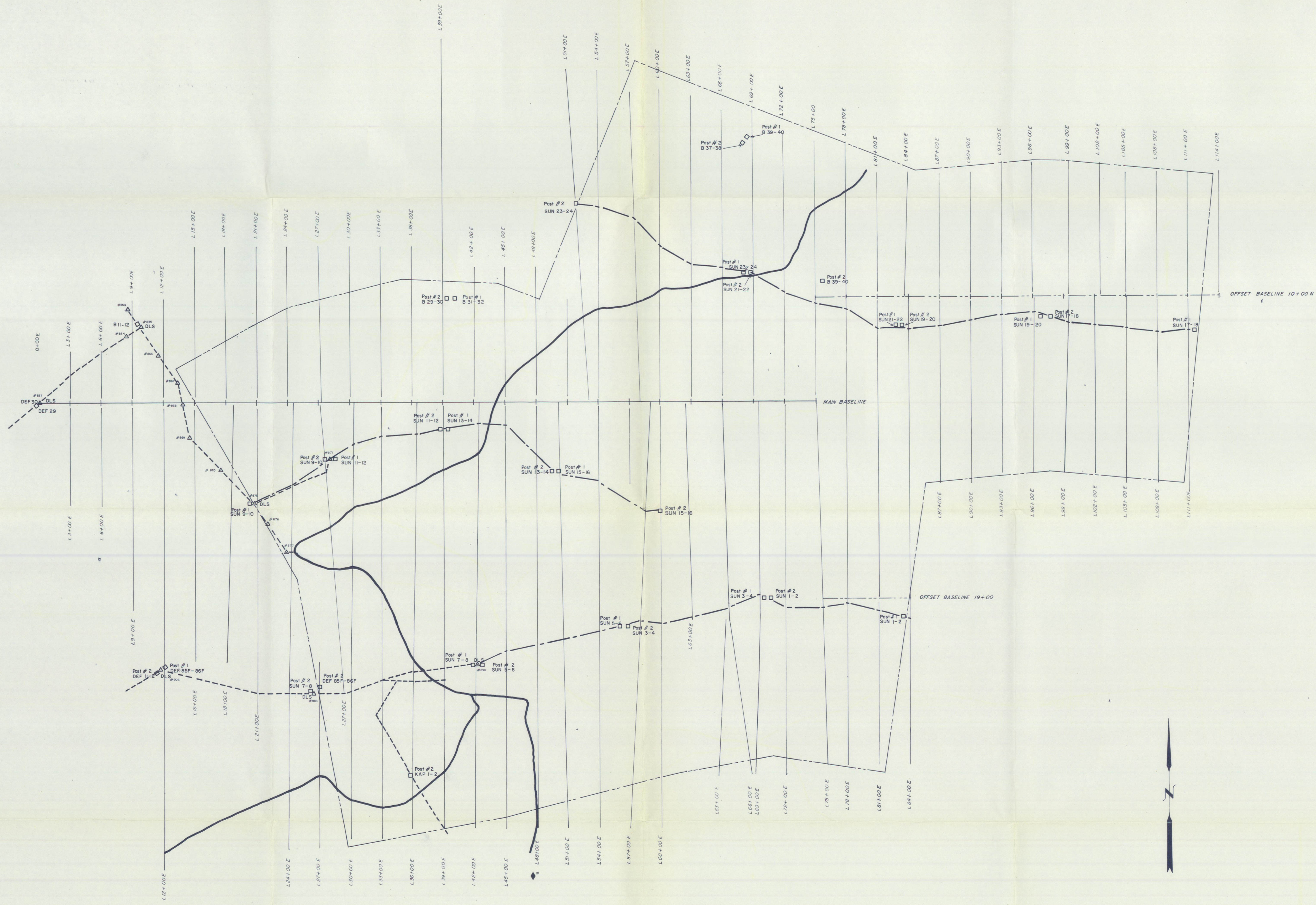
DRWG. NO. 14-3

UNITED KENO HILL MINES LTD.
EXPLORATION DEPARTMENT WHITEHORSE, Y.T.

SUN CLAIM GROUP
N.T.S. SHEET 115-1-11

CLAIM MAP





GENERAL LEGEND

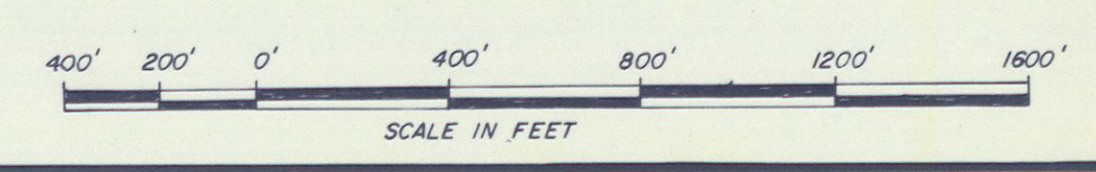
- | | | | |
|--|-----------------------------|--|-----------------------------|
| | Claim Boundary | | Grid Lines |
| | Main Baseline | | Legal Survey Cut Lines |
| | Offset Baseline | | Legal Survey Station Marker |
| | Claim Posts | | Dominion Land Surveyor Hub |
| | Claim Location Lines As Cut | | Tote Road |

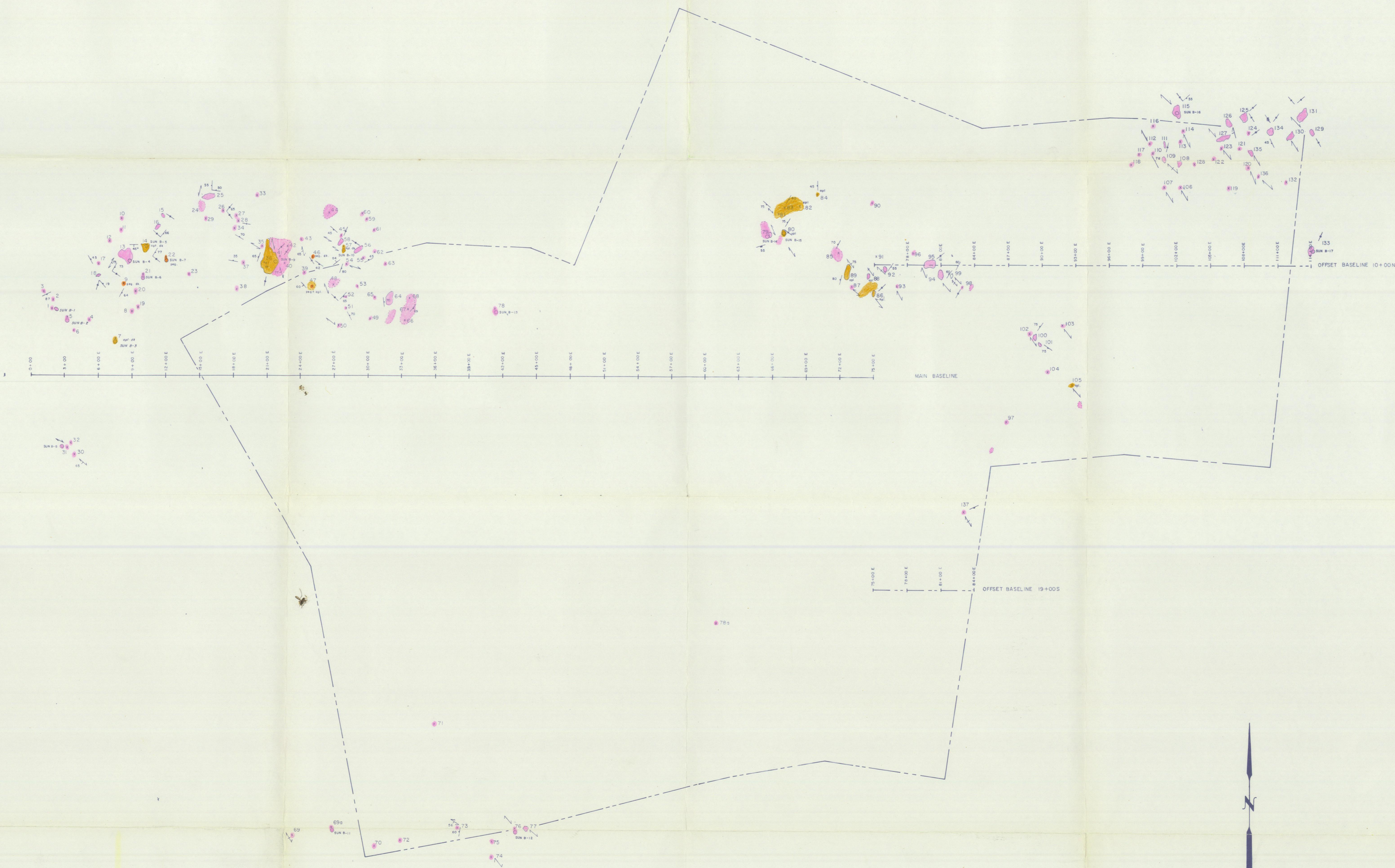
UNITED KENO HILL MINES LTD.
EXPLORATION DEPARTMENT WHITEHORSE, Y.T.

SUN CLAIM GROUP

N.T.S. SHEET 115-I-11

SURFACE PLAN





GEOLOGY BY: ALAN R. BEAMAN

GENERAL LEGEND

- Claim Boundary
- Main Baseline
- Offset Baseline

GEOLOGICAL LEGEND

- Biotite Granite Porphyry
- Aplite
- Pegmatite
- Dike

SYMBOLS

- Foliation Attitude (inclined, vertical, dip unknown)
- Joint Attitude (inclined, vertical)
- Attitude of Aplite or Pegmatite Dikes (inclined, vertical)
- Large Outcrop with reference number
- Small Outcrop with reference number
- Boulder Area
- Rock Sample Location and number

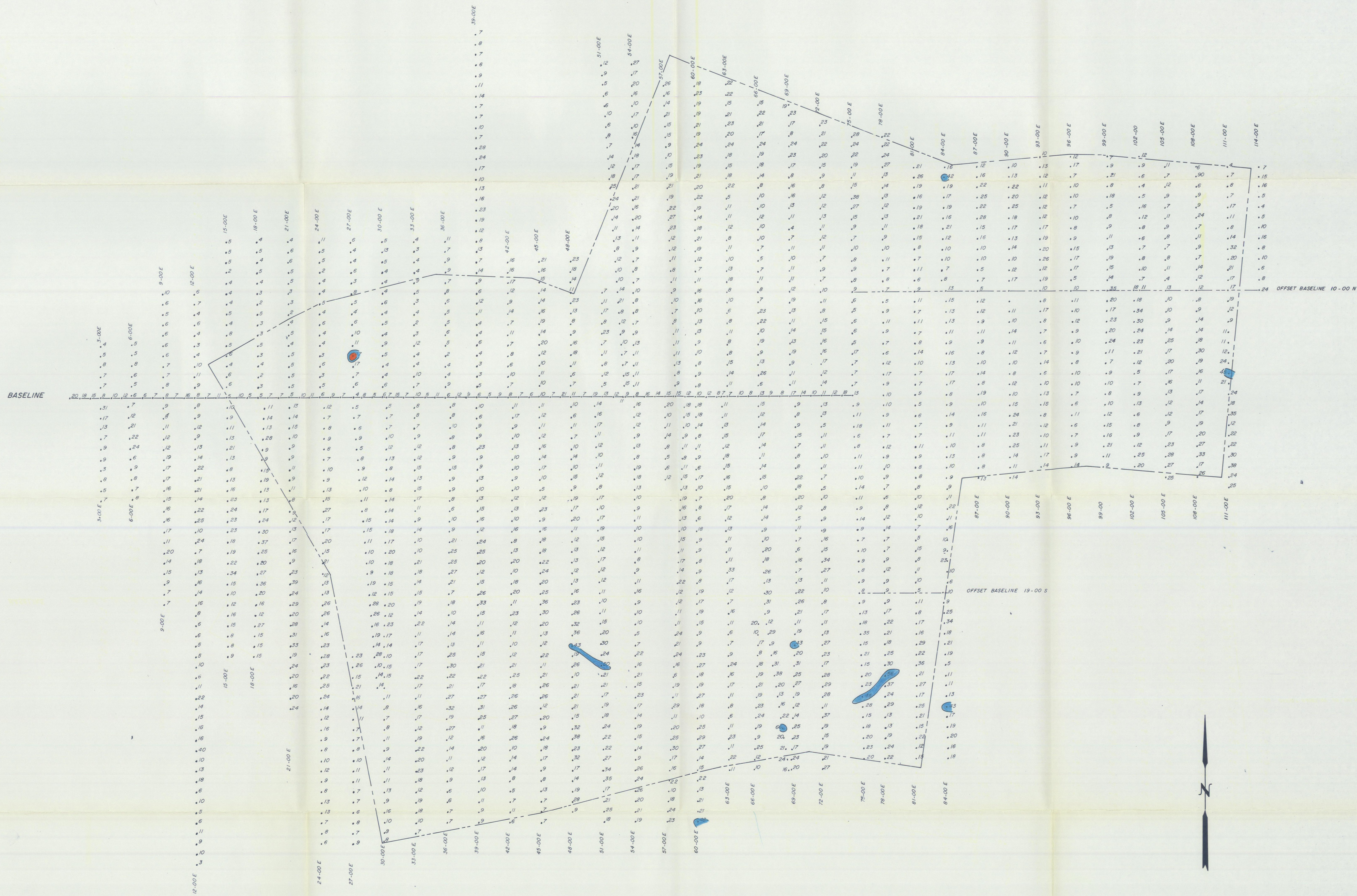
UNITED KENO HILL MINES LTD.
EXPLORATION DEPARTMENT WHITEHORSE, Y.T.

SUN CLAIM GROUP

N.T.S. SHEET 115-I-11

GEOLOGY





GENERAL LEGEND

- Claim Boundary
- Main Baseline
- - - Offset Baseline

GEOCHEMICAL LEGEND

- Soil sample location with value in p.p.m.
- Silt sample location

CONTOUR INTERVAL IN P.P.M.

- 0 - 40
- 41 - 80
- 81 - 160
- 161 - 320
- + 320

UNITED KENO HILL MINES LTD.
EXPLORATION DEPARTMENT WHITEHORSE, Y.T.

SUN CLAIM GROUP
N.T.S. SHEET 115-I-11
COPPER PLOT

