



GEOLOGICAL and GEOCHEMICAL REPORT

on the

TUV 1 to 24 MINERAL CLAIMS

MILLER CREEK AREA
WHITEHORSE MINING DISTRICT

by

Peter Pangman, Party Chief

and

This report has been examined by R. E. Van Tassell, Exploration Superintendent
Geological Evaluation Unit and is ~~considered~~ ^{United Keno Hill Mines Ltd.,}
recommended to the Commissioner to be ~~considered~~ ^{Exploration Department,}
and as representation work in the amount of ~~Whitehorse, Yukon~~

\$ 6102.14

Resident Geologist or
Resident Mining Engineer

Considered as representation work under
Section 53 (4) Yukon Quartz Mining Act.

Commissioner of Yukon Territory

Dated: December 22nd, 1972

N. T. Sheet 105E-7
Latitude 61° 18'N
Longitude 134° 49'W
Dates: July 26th - July 31, 1972
Aug. 20th-Sept. 1st, 1972

060152

C O N T E N T S

	<u>Page No.</u>
PERSONNEL EMPLOYED	1
INTRODUCTION	2
HISTORY	2
PROPERTY	3
Figure for claims	1 inch = $\frac{1}{4}$ mile
LOCATION & ACCESS	3
Location Map	1 inch = 20 miles
HELICOPTER UTILIZATION	3
PHYSIOGRAPHY	3
GEOLOGICAL SURVEY:-	
(a) General	4
(b) Detailed	4
Figure 3	
(c) Structure	6
(d) Mineralization	6
(e) Assays	7
GEOCHEMICAL SURVEY:-	
(a) General	7
(b) Lab Procedures	8
(c) Interpretation of Results	8
Reconnaissance Contour Soil Samples - 5 figures	1 inch=1,000 feet
CONCLUSIONS	10
RECOMMENDATIONS	10
REFERENCES	11
APPENDIX:-	
A. Assay Certificate Results	
B. Summary of Work	
C. Costs of Work	
D. Affidavit of Costs	
FIGURES:-	
General Geology	1 inch to 300 feet
Copper Plot	1 inch to 300 feet
Molybdenum Plot	1 inch to 300 feet

PERSONNEL EMPLOYED:-

GEOLOGICAL MAPPING PERFORMED BY:

Mr. Peter Pangman, Party Chief,
5 Tunstall Ave.,
Senneville, Quebec

Mr. Rod Shilleto, Assistant,
Box 101,
Mayo, Yukon

GEOCHEMICAL SAMPLING BY:

Mr. Thomas Mustapic,
Suite 6, 5017 - Main St.,
Vancouver 10, B.C.

Mr. Glen Hornland,
16509 - 103rd Ave.,
Edmonton, Alberta

GEOCHEMICAL ANALYSIS BY:

Geochemical Laboratory,
Falconbridge Nickel Mines Ltd.,
1314 West 71st Avenue,
Vancouver 14, B.C.

ASSAYING BY:

Whitehorse Assay Office,
P. O. Box 4518,
Whitehorse, Yukon Territory

HELICOPTER SUPPORT BY:

Mr. Charles E. Ford,
31 Alsek Road,
Whitehorse, Yukon

SUPERVISED BY:

R. E. VanTassell, Fellow - G.A.C.,
Exploration Superintendent,
United Keno Hill Mines Limited,
405 Main Street,
Whitehorse, Yukon

I N T R O D U C T I O N :-

Sporadic copper and molybdenum mineralization was found at Windy Mountain during the 1971 Helicopter Reconnaissance of the Lake Laberge Area.

Limited geological work revealed mineralization associated with narrow quartz veins in a complex acid intrusive. Sporadic anomalous geochemical results were obtained from the silt and wide spaced soil samples taken. Selected grab samples returned copper assays up to 0.47% and molybdenum assays up to 0.04%.

Further work was recommended on the area and from June 23rd to July 31st, 1972, a two man party prospected and mapped approximately 35 square miles on a scale of 1 inch to 1,000 feet from three campsites.

Between July 8th and July 15th, the TUV 1 to 24 Claim Group was staked following discovery of an area carrying copper plus interest in the area by another party.

From August 20th to September 1st a three man party carried out geological mapping and soil sampling on the TUV Claim Group.

The company chartered Hiller 12E helicopter was used for access.

H I S T O R Y :-

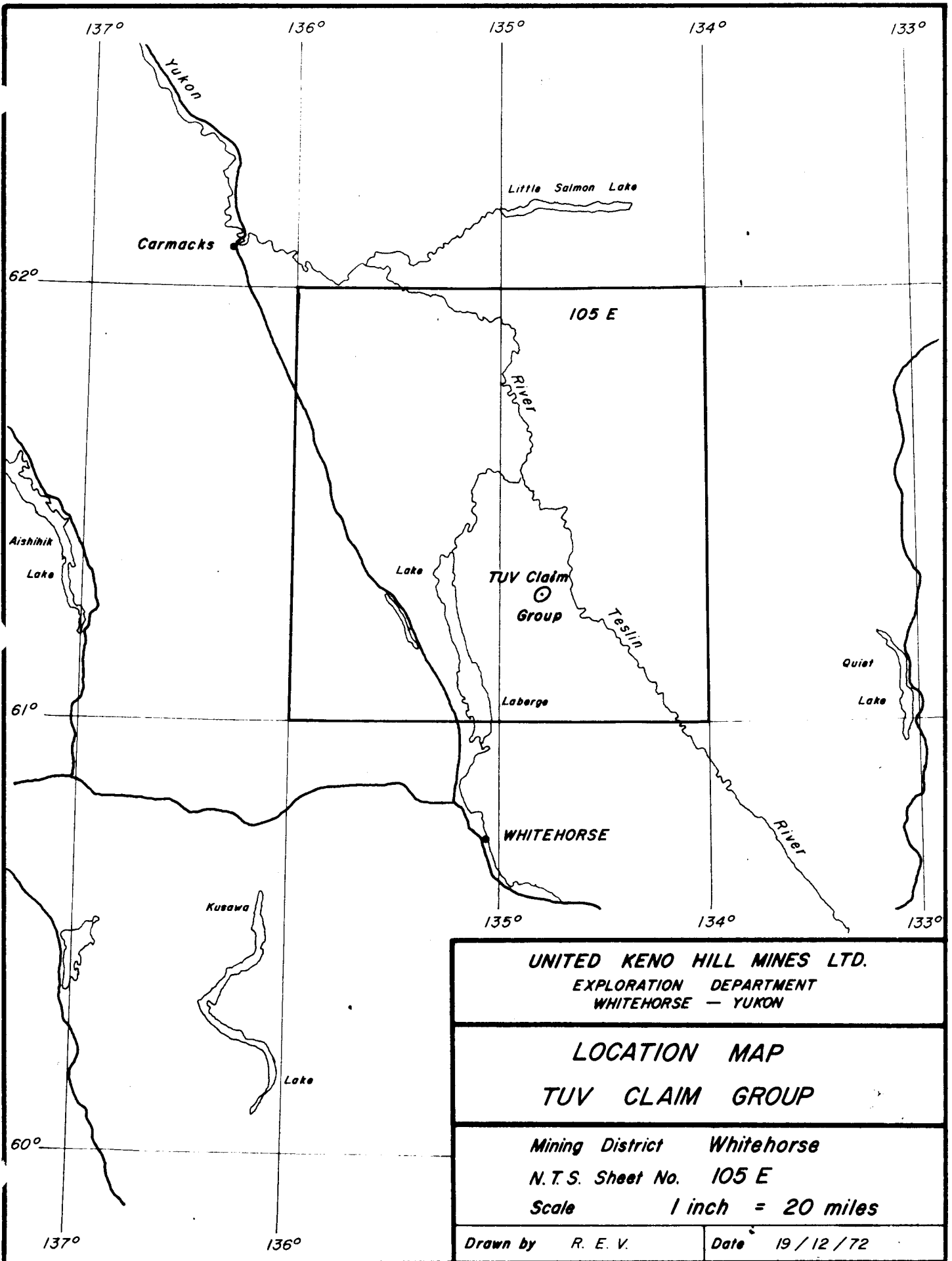
The Laberge Map Sheet was mapped by the G.S.C. between 1929 and 1934 and published in 1938 as Memoir 217, Laberge Map Area by H. S. Bostock and E.J. Lees.

Creek prospecting for placer gold was done in the past, particularly east of the Teslin River. The only mineral production from the Laberge Map Sheet was from placer gold at the Livingstone Creek Camp some 12 miles east northeast of the TUV Claim Group.

A winter tote road connecting Whitehorse via Lake Laberge and Livingstone Creek passes some 4 to 5 miles south of the claim group.

Archer, Cathro and Associates carried out a reconnaissance program in certain parts of the Laberge Area in 1971. They obtained some anomalous results from Windy Mountain. On our arrival in the area, they were in the process of evaluating the intrusive with a 2 man crew.

No signs of previous activity were noted on the Windy Mountain intrusive.



PROPERTY:-

The TUV Claim Group is held by United Keno Hill Mines Limited and consists of 24 contiguous claims as follows:

<u>Claim Name</u>	<u>Grant Nos.</u>	<u>Location Date</u>	<u>Record Date</u>	<u>Expiry Date</u>
TUV 1-2	Y66799-Y66800	8&9/7/72	25/7/72	25/7/73
TUV 3-8	Y66801-Y66806	8/7/72	25/7/72	25/7/73
TUV 9-10	Y66807-Y66808	10&12/7/72	25/7/72	25/7/73
TUV 11-12	Y66809-Y66810	10/7/72	25/7/72	25/7/73
TUV 13-14	Y66811-Y66812	10&11/7/72	25/7/72	25/7/73
TUV 15-16	Y66813-Y66814	11&12/7/72	25/7/72	25/7/73
TUV 17-20	Y66815-Y66818	13&14/7/72	25/7/72	25/7/73
TUV 21-22	Y66819-Y66820	14&15/7/72	25/7/72	25/7/73
TUV 23-24	Y66821-Y66822	15/7/72	25/7/72	25/7/73

LOCATION & ACCESS:-

The TUV Claim Group lies 5 miles west of the Teslin River, some 42 miles northeast of Whitehorse. It is 16 miles east of Lake Laberge and 34 miles east southeast of Braeburn on the Dawson-Whitehorse Highway. N.T. Sheet 105E-7, latitude 61° 18' North and longitude 134° 49' West.

Access to the area was made by Hiller 12E helicopter from Braeburn. A winter tote road from Lake Laberge to the Livingstone Creek Area passes 4 to 5 miles to the south of the Claim Group. Access to the area is also possible by boat on the Teslin River.

HELICOPTER UTILIZATION:-

<u>Date</u>	<u>Flight Report No.</u>	<u>Use</u>	<u>Hours Flown</u>
Aug. 19	0154	Position helicopter at Braeburn	1.4
Aug. 20	0155	Move in camp & personnel	5.8
Aug. 22	0157	Supply & samples out	1.5
Aug. 28	0161	Supply, visit & samples out	2.6
Sept. 1	0164	Move out camp & personnel	5.2
TOTAL			16.5 hours

PHYSIOGRAPHY:-

The Windy Mountain Area forms a prominent northwest trending ridge, bounded to the north, south and west by 1 to 2 mile wide glacial filled valleys. To the east it is bounded by the 4 to 5 mile wide Teslin River Valley. Elevations in the area range from 2,100 feet to 4,867 feet.

The northern part of the claim group is cut by a prominent east-west trending ridge. This ridge lies above treeline and exhibits good outcrop (app. 10%) and talus slopes.

The remainder of the claim group with the exception of a large swamp on Claims 17 and 19 is heavily treed with very little outcrop (less 1%). Common vegetation is black spruce, areas of alder and willow with moss cover on the north and northeast facing slopes.

Relief on the claim group varies from 3,500 feet to 4,867 feet.

Glacial erratics are common throughout the claim group and it is felt that the southwestern portion of the claim group has heavy overburden cover. 50 feet of glacial till was noted in a nearby creek valley.

Volcanic ash was noted in areas and in some localities it has been masked by solifluction.

G E O L O G I C A L S U R V E Y :-

(a) General-

The geological study of the claim group followed prospecting and mapping of the entire intrusive stock and its adjacent contacts on a scale of 1 inch to 1,000 feet.

The study may be divided into two interests:

1. Detailed examination of previously found copper occurrences to determine the mode of occurrence.
2. Pace and compass traverses from the claim baselines through a selected portion of the claim group so as to map rock types and to locate further copper occurrences.

This type of examination usually produces a false impression on a larger scale map of the claim group. Consequently one has more copper occurrences plotted in the areas of detailed examination than in areas receiving pace and compass work.

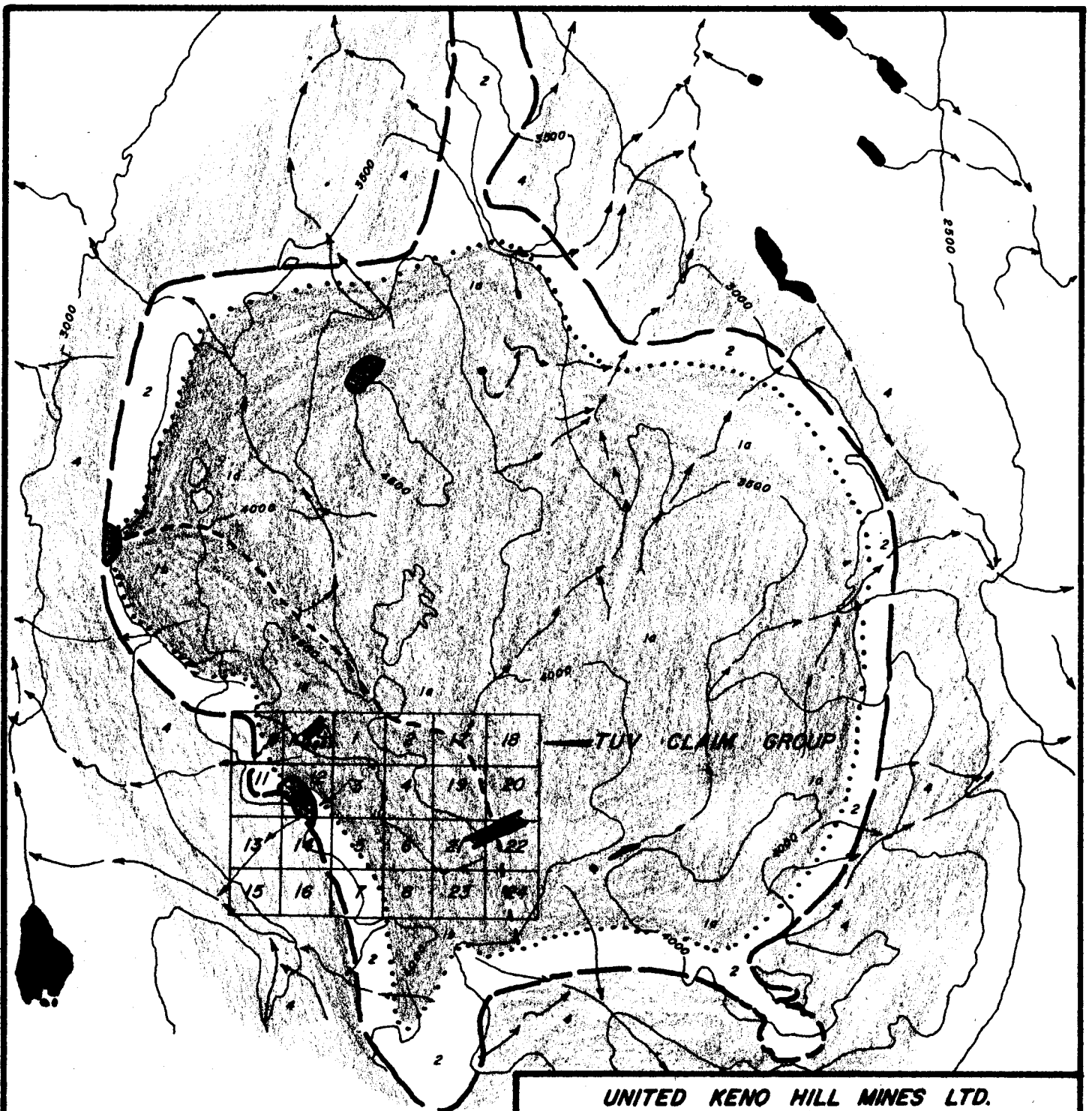
The Windy Mountain intrusive is some 5 to 6 miles in diameter and has a northwest elongation. This acid intrusive shows considerable variation in composition and grain size and may represent more than one age of intrusion and/or differentiation.



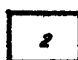


The stock is believed to be Cretaceous in age and intrudes sediments of the Laberge Series. These consist of argillites, shales, siltsone, limestone, arkose, sandstone and pebble conglomerate.

The northwesterly Teslin lineament passes some 4 miles to the east of the property. The proximity of the intrusive to the Teslin lineament prompted the initial interest in the area.

(b) Detailed-

As previously stated the Windy Mountain intrusive exhibits great variations in both composition and grain size. The variations are both subtle and distinct and compositional changes may be both gradual and abrupt. There is definite evidence for at least two ages of intrusion and/or in some cases differentiation within the intrusive. Without detailed



-  LEUCOSYENITE and SYENITE, LEUCOMONZONITE, GRANDIORITE. (medium to coarse grained)
-  HORNBLende / BIOTITE SYENITE, MONZONITE and GRANITE (fine to medium grained)
-  2
PLAGIOCLASE and / or HORNBLende PORPHYRY
-  ORTHOCLASE and / or ORTHOCLASE - HORNBLende PORPHYRY
-  Leberge series SEDIMENTS

UNITED KENO HILL MINES LTD.
EXPLORATION DEPARTMENT
WHITENORSE — YUKON

DISTRIBUTION OF INTRUSIVE ROCK TYPES IN THE WINDY MOUNTAIN AREA

Mining District *Whitehorse*
N.T.S. Sheet No. *105-E-7*
Scale *1 : 50,000*

Drawn by *R. E. V.* Date *19 / 12 / 72*

mapping, the grouping of intrusive variations into groups based on age of intrusion is difficult. From work conducted to date the following breakdown has been made (see figure 3).

i ACID INTRUSIVE - CRETACEOUS -

- Unit 1(a) - medium to coarse grained leucosyenite and syenite with minor hornblende and/or biotite; minor leucomonzonite; medium grained granodiorite.
- Unit 1(b) - fine to medium grained hornblende and/or biotite monzonite; minor quartz monzonite; minor hornblende and/or biotite granite; minor hornblende and/or biotite syenite.
(Note: This unit showed the most associated copper mineralization).
- Unit 2 - Plagioclase porphyry, hornblende porphyry and minor plagioclase-hornblende porphyry.
- Unit 3 - Orthoclase porphyry and orthoclase-hornblende porphyry.

ii SEDIMENTS - "Laberge Series" - Jurassic -

- Unit 4 - argillite, shale, siltstone, limestone, arkose, sandstone and pebble conglomerate.

ii Laberge Series Sediments -

The Laberge series sediments have been intruded by an acid intrusive. A variety of types are present but argillaceous types are predominant. The west and southwestern portion of the TUV Claim Group is underlain by sediments.

The intrusive-sediment contact is not sharp and shows intrusive dikes, sedimentary xenoliths and embayments common.

Two groups were noted on the claim group:

1. argillite and siltstone
2. arkosic rocks?

The argillite is black and exhibits no banding. Fracture surfaces are highly limonized and often contain pyrite near the intrusive contact.

Siltstone is green in color and rare. However, an argillaceous grey siltstone containing disseminated pyrite (location 30) close to the intrusive contact is abundant.

One occurrence of green, limey siltstone was noted (location 57).

Arkose and arkosic rocks are rare. An orthoclase quartz rock was noted at locations 43 and 56. At location 59 a rock was noted containing grains of orthoclase, plagioclase and minor quartz in a light green matrix.

These two types have been classed as sedimentary but may also represent intrusive variations.

i Intrusive -

The majority of the intrusive found in the claim group belongs to Unit 1B. It is mainly a fine to medium equigranular, syenite, monzonite

and granodiorite. Mafic accessory minerals account for a small proportion of the rock. Hornblende is more common than biotite. There is abundant magnetite and it occurs as veins in some areas (location 13 and 62). This probably accounts for the well marked aeromagnetic anomaly over the intrusive (see aeromagnetic Map No. 1370 - Mason Landing - 105E-7, 1 inch = 1 mile).

Some areas of the intrusive exhibit a high degree of brecciation accompanied by limonite staining. Some of these zones are up to 30 feet wide and have dolomite and calcite associated. The calcite may occur in the center of vugs coated with dolomite or as veinlets in dolomite. Examples of this brecciation and veining may be found at locations 4, 22 and 23. Quartz veinlets up to one inch in width are present but not abundant.

A number of dikes of younger intrusive were noted. These dikes do not exceed thirty (30) feet in width and consist of orthoclase phenocrysts in a fine grained, aphanitic, grey, orthoclase-hornblende matrix. Phenocrysts up to 1 inch in length were found in a dike near the summit of Windy Mountain at location 18. Very rare biotite phenocrysts were found at locations 18 and 70. These dikes often exhibit pronounced hornblende foliation parallel to the strike and dip of the dikes. These porphyry dikes belong to Unit 3.

(c) Structure -

The sedimentary rocks are massive and exhibit little banding, with only two strikes and dips available.

The intrusive is fractured but is relatively fresh.

The intrusive-sediment contact is not sharp, with intrusive dikes, sedimentary xenoliths and embayments abundant. Small (6 inches or less) partly assimilated xenoliths are common in the intrusive, particularly near the contact.

It is also felt that the dolomite and calcite veins common in some areas represent vertical proximity to limey members of the Laberge series sediments.

(d) Mineralization -

During the mapping of the claim group chalcopryrite, pyrite, malachite, azurite and galena were observed.

Copper mineralization has been found as follows:

1. chalcopryrite as random smears on fracture surfaces with pyrite commonly associated (locations 9 and 72).
2. Chalcopryrite quartz veins (location 10).
3. Chalcopryrite in dolomite veins (location 22).
4. Malachite as fracture face coatings, surface concretions and minute disseminations apparently associated with magnetite.
5. Minor azurite with chalco at locations 50B and 51.

Closer examination of what appeared to be disseminated and veinlet chalcopryrite revealed minute veinlets of dolomite and/or calcite carrying minor chalcopryrite. This was substantiated by low copper assays from

selected grab samples.

The majority of dolomite and quartz veins are barren. No large zone of concentrated copper mineralization was noted.

Pyrite is common on the claim group as disseminations and on fracture faces both in sediments near the intrusive contact and within the intrusive.

Two extremely small occurrences of galena were noted at location 46 and on Claim 10, both in narrow quartz veinlets.

All samples were lamped for scheelite with negative results.

(e) Assays -

On the initial investigation of the Windy Mountain intrusive some 36 samples were submitted for assay. These samples varied from selected grabs to random chips and were picked to examine most rock types and all varieties of mineralization. Of these samples, the highest assay was 0.53% copper with eight samples assaying greater than 0.20% copper (see attached appendix for assays).

Eight (8) samples were taken during the course of work on the TUV Claim Group. Results of these samples are as follows:

<u>Sample No.</u>	<u>Location</u>	<u>Cu%</u>	<u>Ag.oz/ton</u>
14611	17	0.26%	0.14
14612	37	0.04	0.12
14613	44	0.13	0.12
14614	50	0.28	0.12
14615	52	0.18	0.12
14616	53	0.01	0.04
14617	71	0.41	0.12

All assaying by Whitehorse Assay Office - Whitehorse.

G E O C H E M I C A L S U R V E Y :-

(a) General -

Claim baselines in the course of staking were well cut and blazed and pickets placed every 300 feet along the baseline.

Reconnaissance pace and compass geochemistry was carried out on 10 claims in the TUV Group, namely: Claims 1, 3, 4, 5, 6, 8, 10, 12, 21 and 23. This area was considered to carry the most significant copper mineralization.

Samples were taken every 100 feet along 300 foot spaced lines. Samples were taken from the "B" horizon employing a mattock.

Some 840 soil samples were taken. A further 62 contour soil samples were taken approximately along the 4,000, 4,200, and 4,500 foot contours, following staking of the TUV Claim Group. Sample spacing was a 200 foot intervals along the lines. These samples were run to check the downhill expression of the mineralized zone. All samples were analyzed by the Falconbridge Vancouver Geochemical Laboratory for copper and molybdenum.

(b) Lab Procedures -

The initial laboratory techniques and methods were setup and supervised by Dr. Ivor L. Elliott, Chief Geochemist, Falconbridge Nickel Mines Limited, Vancouver, B.C.

(i) Copper Analysis - The samples were dried in a gas-fired hot air drier and then hand screened through 80 mesh nylon screens.

1 gram of sample was weighed into a calibrated pyrex test tube and boiled for one hour with 10 mls. of 10% nitric acid. After cooling the volume was restored to 10 mls to compensate for evaporation loss. The sample was then filtered through Whatman No. 1 Filter Papers. The filtrate was aspirated into the atomic absorption unit and the copper concentration was read at the appropriate wave length.

(ii) Molybdenum Analysis - The samples were dried and screened as above.

0.25 grams of the -80 mesh fraction were taken and fused with an alkaline flux. This fusion was dissolved in demineralized water. An aliquot of this solution was taken for analysis. Molybdenum was determined by forming the colored dithiol complex which was green at temperatures below 30°C. The colored complexes were visually assessed against standards prepared in a similar way.

(c) Interpretation of Results -

1. Contour soil samples - (see reconnaissance soil maps)

All 62 contour samples were analyzed for copper, molybdenum, zinc, lead and silver.

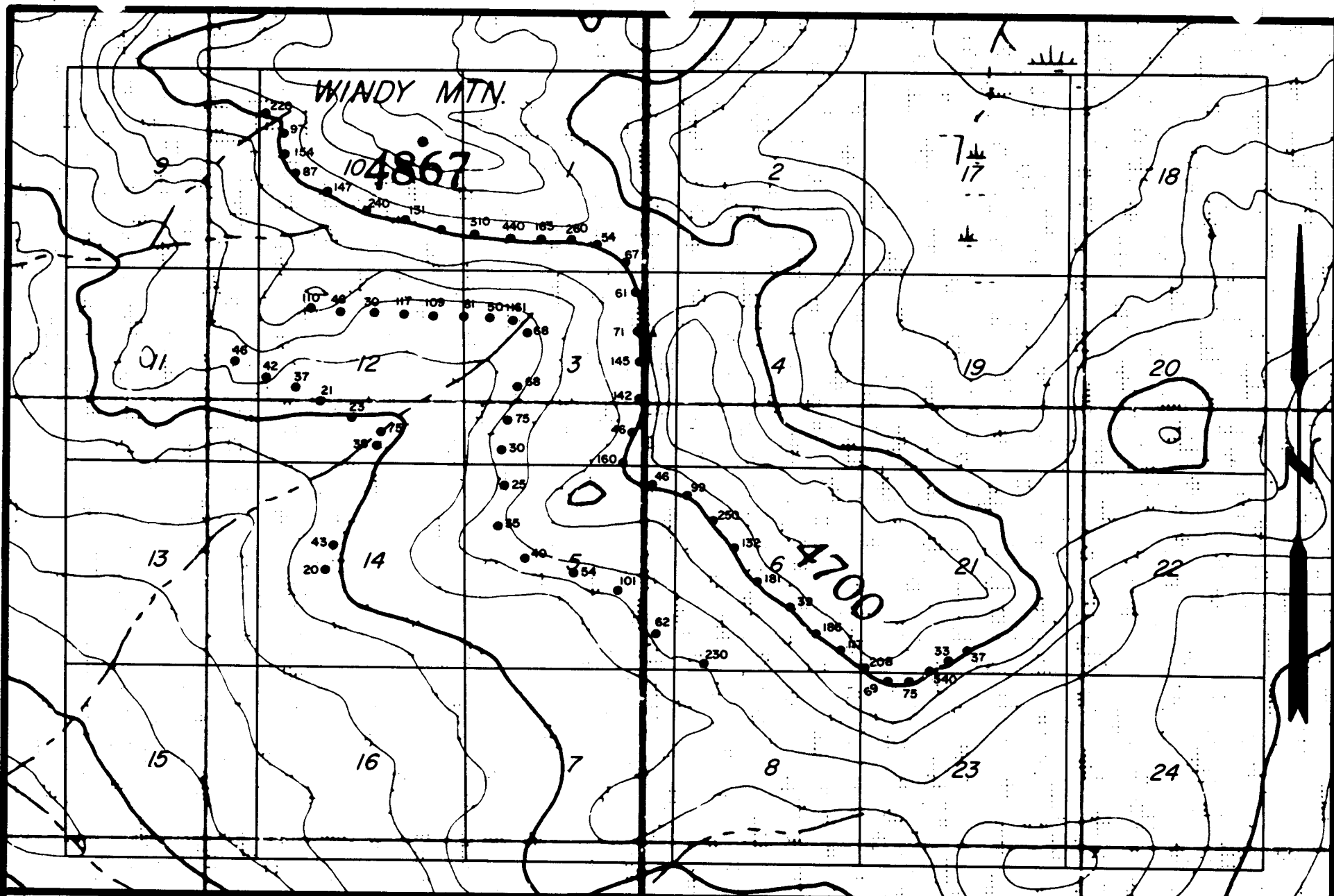
All samples except one returned less than 1 p.p.m. silver.

Lead results were very low order except for 2 samples which returned 108 and 180 p.p.m. These values have no correlation with silver results.

Zinc results were all very low order with the highest returning 89 p.p.m.

Copper reflected the area of suspected mineralization and gave anomalous values from 500 to 800 feet downhill. Of the 62 samples taken, 42 returned over 50 p.p.m. copper and 25 returned over 100 p.p.m. Copper reflects a fairly high background for the area.

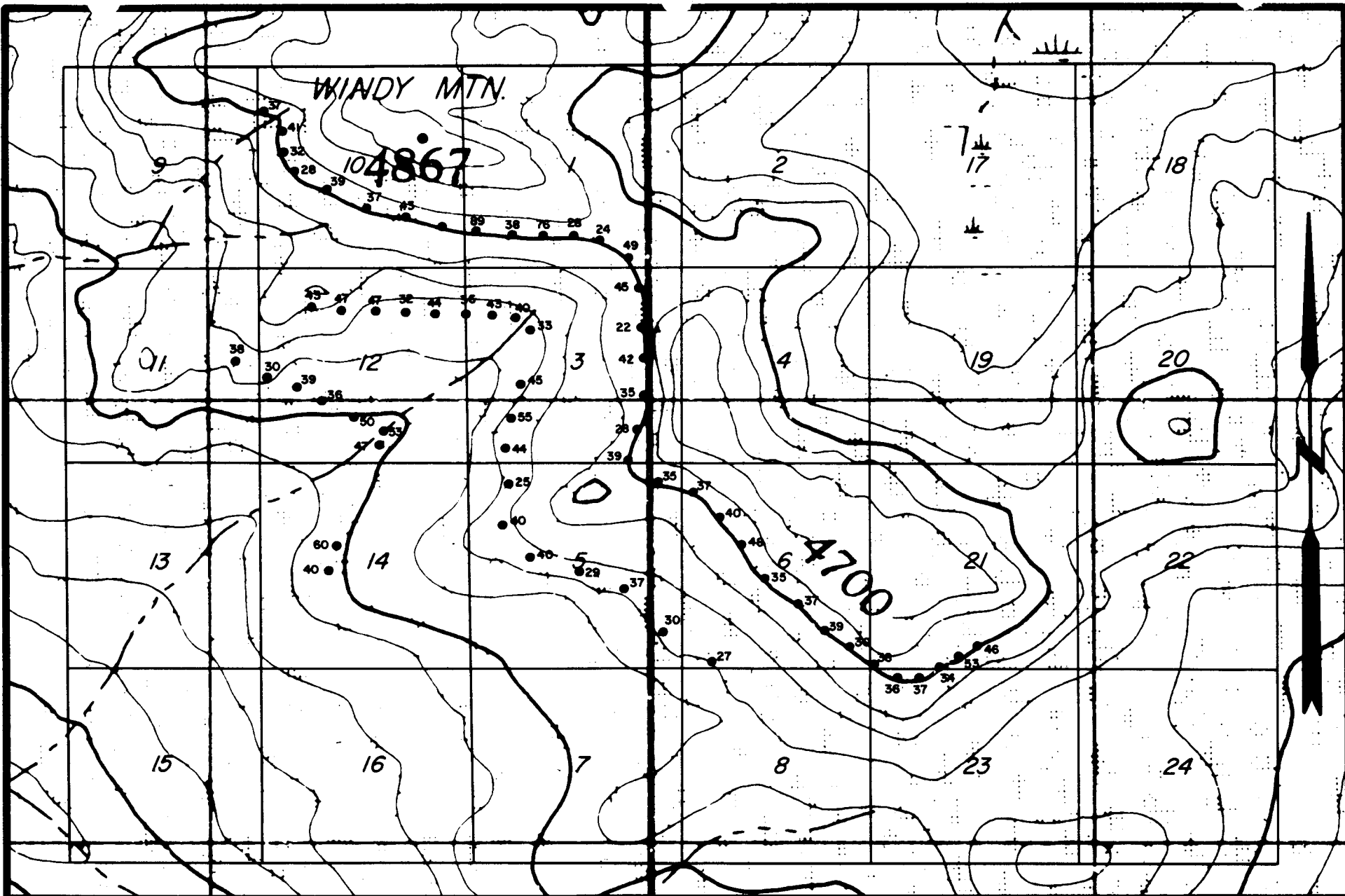
Anomalous molybdenum values were obtained, with 12 of the 62 samples, or 19.3% returning 5 p.p.m. or greater. It occasionally reflects, but not always, high, copper values.



TUV CLAIM GROUP
 Windy Mtn. Area 105-E-7

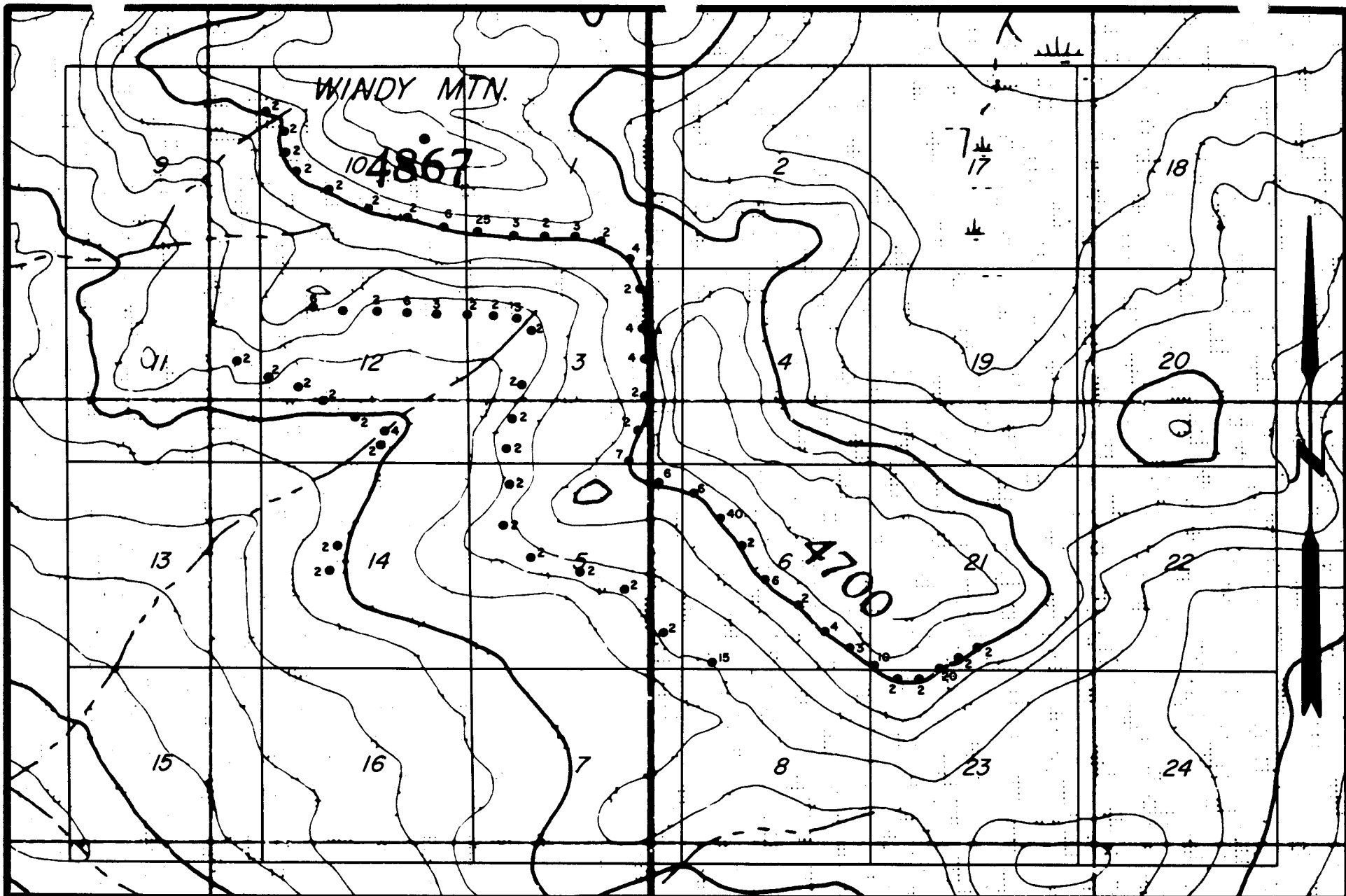
RECONNAISSANCE SOIL SAMPLING 1972
 Values in p.p.m. for Cu

Scale: 1"=1000'



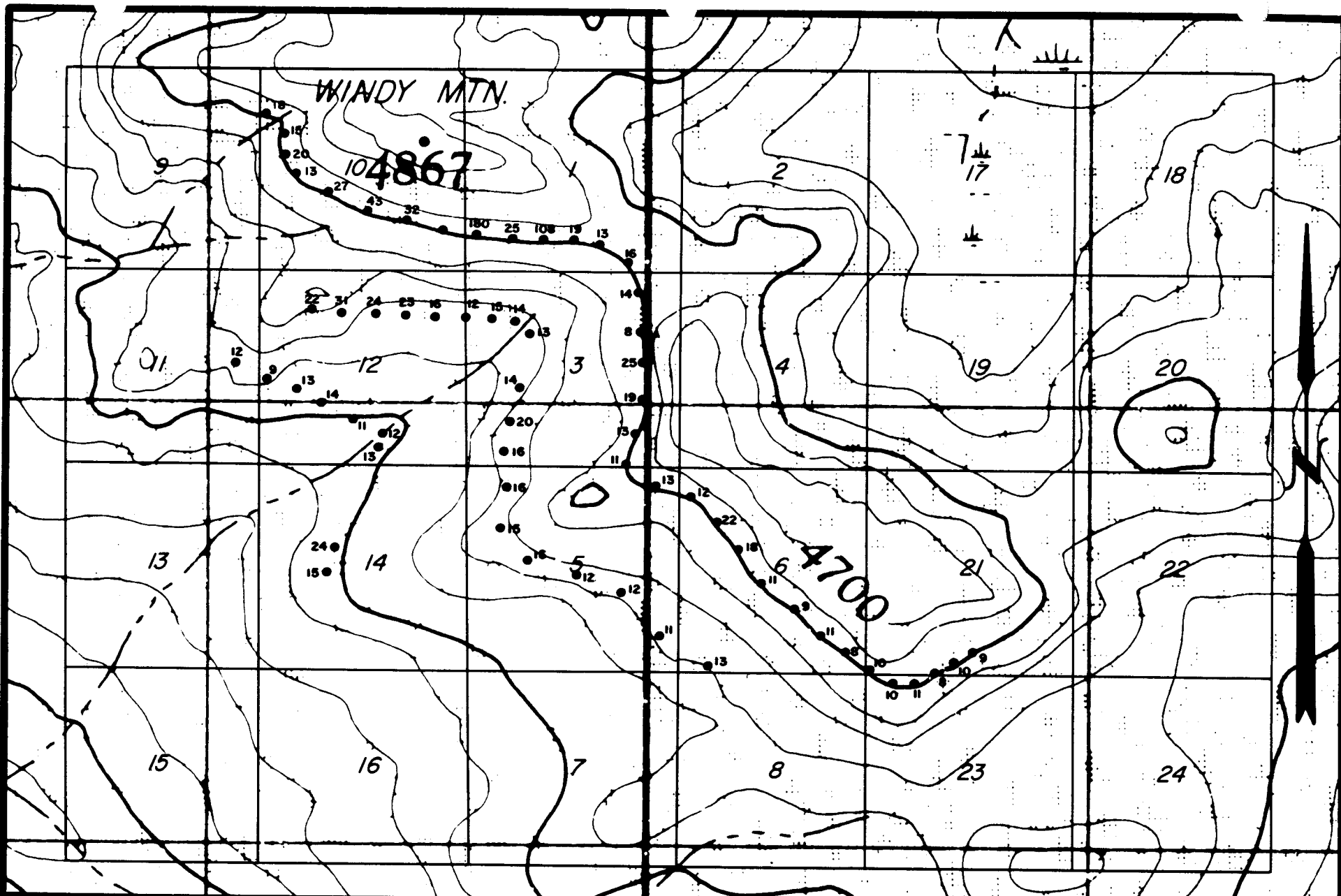
TUV CLAIM GROUP
 Windy Mtn. Area 105-E-7

RECONNAISSANCE SOIL SAMPLING 1972
 Values in p.p.m. for Zn
 Scale: 1"=1000'



TUV CLAIM GROUP
 Windy Mtn. Area 105-E-7

RECONNAISSANCE SOIL SAMPLING 1972
 Values in p.p.m. for Mo (2-2)
 Scale: 1"=1000'



TUV CLAIM GROUP
 Windy Mtn. Area 105-E-7

RECONNAISSANCE SOIL SAMPLING 1972
 Values in p.p.m. for Pb

Scale: 1"=1000'

This initial contour sampling indicated an area of interest and revealed that further sampling in the area would be best analyzed for copper and molybdenum. The above copper and molybdenum results correlate fairly well with results obtained from claim reconnaissance soil sampling.

2. Soil Sampling Program -

840 soil samples were analyzed for copper and molybdenum.

(i) Copper-(see copper plot map)-Local background values for copper are 8 to 100 p.p.m. with the majority being less than 100 p.p.m. Some 77.4% of the samples returned less than 100 p.p.m. Values over 100 p.p.m. were considered distinctly anomalous, accounting for 22.6% of the samples. Some 4.0% of the values obtained were over 300 p.p.m.

A series of isolated, erratic anomalies were found trending in a northwesterly direction through the center of the claim group. The anomalies display downhill solifluction and also parallel the main ridge topography. The downhill trend in some areas is probably the result of secondary copper e.g. malachite.

(ii) Molybdenum-(see molybdenum plot map)- Local background values for molybdenum are 1 to 4 p.p.m. with the majority being less than 5 p.p.m. Some 83.3% returned less than 5 p.p.m. Values over 5 p.p.m. were considered distinctly anomalous, accounting for some 16.7% of the values. Some 0.7% of the values obtained were over 20 p.p.m.

A series of isolated, erratic anomalies were found trending northwesterly and generally reflecting the erratic copper anomalies. The molybdenum anomaly also parallels the main ridge topography. In some cases, but not all, molybdenum highs coincide with copper highs.

No visible molybdenum mineralization was identified in the mapping and prospecting and must occur in minute quantities.

Summary -

Both the copper and molybdenum anomalies are small, isolated, erratic, trend northwesterly and parallel the main ridge topography.

Prospecting and mapping in the area revealed chalcopyrite in quartz, calcite and dolomite veinlets and as fracture and/or joint face smears. Malachite and very minor azurite were also observed. Geological work also revealed that isolated anomalies could be expected in areas throughout and within the Windy Mountain intrusive.

The isolated, erratic pattern of the geochemistry may possibly reflect wide spaced fractures and/or joints and veinlets carrying copper.

A number of hand trenches should be put down to bedrock over "geochemical highs" to evaluate mode of occurrence, frequency of fractures and veinlets and for assaying etc., etc.

C O N C L U S I O N S :-

The TUV mineral claims, 1 to 24 inclusive were staked to cover an area of copper mineralization found by prospecting the Windy Mountain intrusive.

Outcrop exposure is generally poor on the claim group (3% or less).

The majority of the claim group is underlain by fine to medium equigranular syenite, monzonite and granodiorite, rich in magnetite, lacking in mafic minerals and cut by a number of narrow dikes of orthoclase porphyry.

The southwestern and western portion of the claim group is underlain by Laberge series sediments consisting of argillites, siltstones and arkose. The intrusive-sediment contact is not sharp and is marked by dikes, xenoliths and embayments.

Minerals observed in order of abundance are pyrite, chalcopryite, malachite, azurite and galena.

Chalcopryite, the main mineral of interest occurs on random fracture surfaces as smears and randomly in quartz, calcite and dolomite veinlets.

Selected grab samples returned as high as 0.53% copper and 0.04% molybdenum.

Though outcrop is sparse, prospecting and mapping revealed that mineralization observed was random and widespread. It concluded that random, widespread anomalies and high background could be expected throughout and within the intrusive.

62 contour soil samples were taken and analyzed for copper, molybdenum, lead, zinc and silver. 840 reconnaissance soil samples were taken over 10 claims and analyzed for copper and molybdenum.

Soil sample results gave small, isolated, erratic anomalies for both copper and molybdenum trending northwesterly and paralleling the main ridge topography.

The geochemical anomalies may well define an erratic, wide spaced, random fracture and/or veinlet type copper mineralization.

R E C O M M E N D A T I O N S :-

It is recommended that hand trenching be conducted to bedrock over geochemical highs to determine mode of occurrence, frequency of fractures and veinlets, assays, etc., etc.

Further work and filing of assessment will depend on the results of this trenching.

REFERENCES:-

Pangman, Peter: 1972: Geological Report on the Windy Mountain Intrusive
(Miller Creek Area).

VanTassell, R.E., 1971: Report on the Geological and Geochemical Helicopter
Reconnaissance for Parts of Laberge, Glenlyon and
Carmacks Map Area, pages 11 to 13.

Bostock, H.S. and Lees, E.J.: Memoir 217, Laberge Map Area, 1938.

Aeromagnetic Map No. 1370-Mason Landing 1 inch = 1 mile

Staking Sheet 105E-7 1 inch = $\frac{1}{2}$ mile

APPENDIX B

SUMMARY OF WORK:-

1. GEOLOGICAL MAPPING -

July 26th to July 31st - Prospecting by 2 man crew. August 20th to Sept. 1st - One man prospected and mapped on TUV 1 to 24 claim group. Pace and compass methods were employed using the claim location line as baselines.

2. GEOCHEMICAL SURVEY -

July 26th to July 31st - 62 contour soil samples taken at the 4,000, 4,200 and 4,500 foot contours by a 2 man crew. August 20th to Sept. 1st 840 soil samples taken by a 2 man crew and analyzed for 2 metals, copper and molybdenum by Falconbridge Nickel Mines, Vancouver Geochemical Laboratory.

APPENDIX C

WORK COSTS FOR TUV CLAIM GROUP

A. LABOUR-

19 Days	Party Chief at \$575/month	352.42
6 Days	Assistant at \$500/month	96.77
13 Days	Assistant at \$525/month	220.16
13 Days	Field Helper at \$475/month	<u>199.19</u>
		868.54

B. GEOCHEMICAL-

62 soils by 5 metals Cu, Mo, Ag, Pb and Zn @ 3.50 each	217.00
840 soils by 2 metals Cu & Mo @ 2.50 each	<u>2,100.00</u>
	2,317.00

C. ASSAYING-

File No. 7201	6 at 19.50	117.00
File No. 7216	19 at 21.00	399.00
File No. 7240	1 at 10.00	10.00
File No. 7247	8 at 8.00	64.00
File No. 7253	3 at 6.00	18.00
File No. 7277	2 at 21.00	42.00
File No. 7370	4 at 6.00	<u>24.00</u>
		674.00
	Less 10% discount	<u>67.40</u>
		606.60

D. AIRCRAFT SUPPORT-

16.5 hours by Hiller 12E piloted by C.E. Ford, Mayo helicopters @ \$140.00 per hour.	<u>2,310.00</u>
---	-----------------

TOTAL \$6,102.14

Note: The above costs do not include food, camp equipment, supervision, office overhead, aircraft fuel and oil or map and report preparation.

A F F I D A V I T

I, Robert E. Van Tassell, of Whitehorse, in the Yukon Territory,
Exploration Superintendent, do solemnly declare:

1.

That I am duly appointed agent of United Keno Hill Mines Limited,
and except where otherwise stated have a personal knowledge of the
facts and matters herein declared.

And I make this solemn declaration conscientiously believing it to
be true and knowing that it is of the same force and effect as if
made under oath and by virtue of the Canada Evidence Act.


Declared before me at

Whitehorse, in

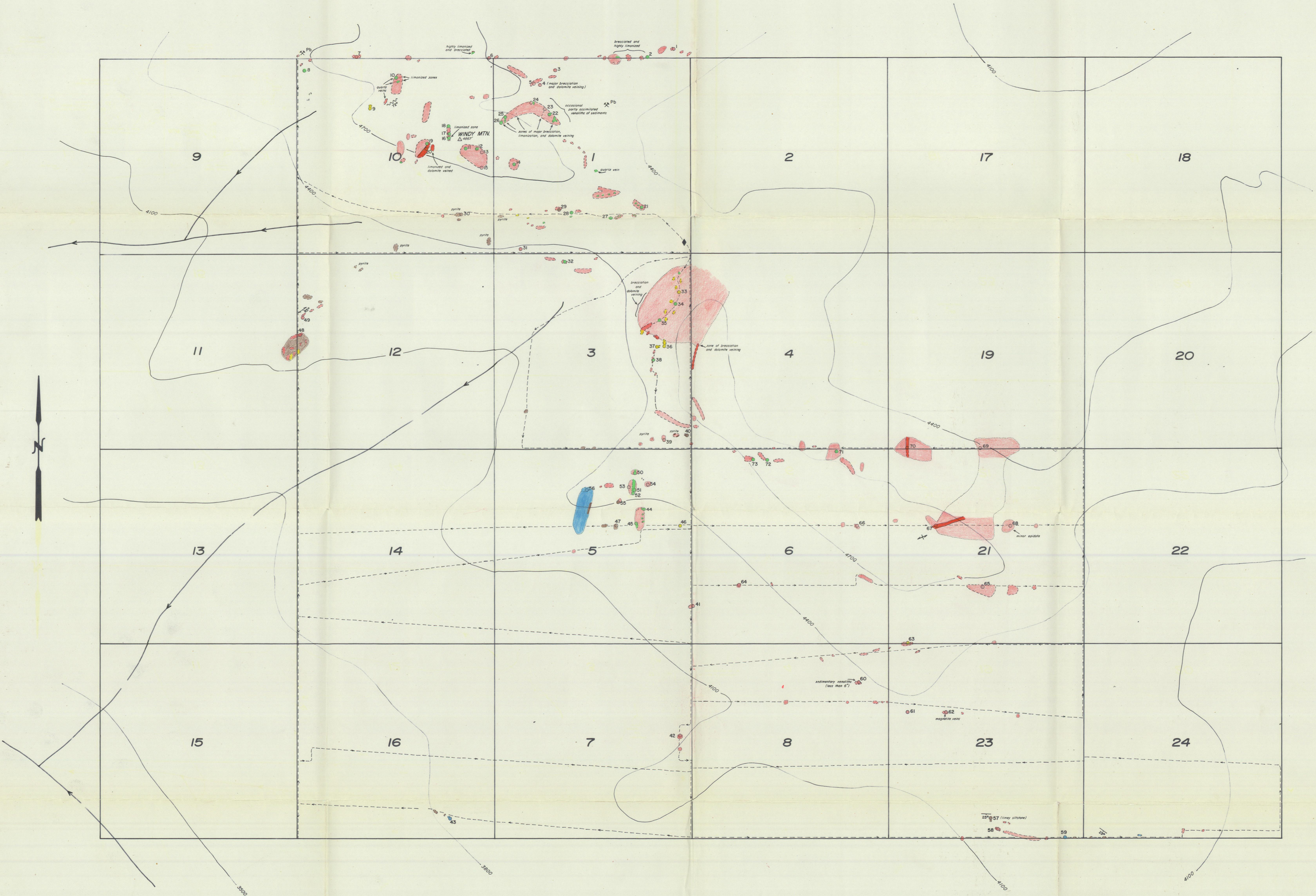
the Yukon Territory,

this 24th day of

July 1973.



A Commissioner for Oaths
for Yukon Territory



INTRUSIVE

- barren equi-granular syenite, monzonite, and granodiorite; fine to medium grained and rich in magnetite.
- barren orthoclase porphyry
- intrusive with fracture face smears, disseminations (?) and vein (quartz, dolomite, calcite) occurrences of copper mineralization.
- intrusive with fracture face smears, and disseminations of iron sulphide.

LABERGE SERIES SEDIMENTS

- argillite and siltstone
- arkose and arkosic waste

LEGEND

- rock sample location
- outcrop
- talus slope
- mineralization (other than copper)
- strike and dip of sedimentary rocks
- strike and dip of intrusive foliation
- fault with dip
- camp
- topographic contour (approximate)
- drainage with direction of flow
- claim boundary
- pass and compass traverse route (not all shown because of the congestion of traverses in areas of high exposure)

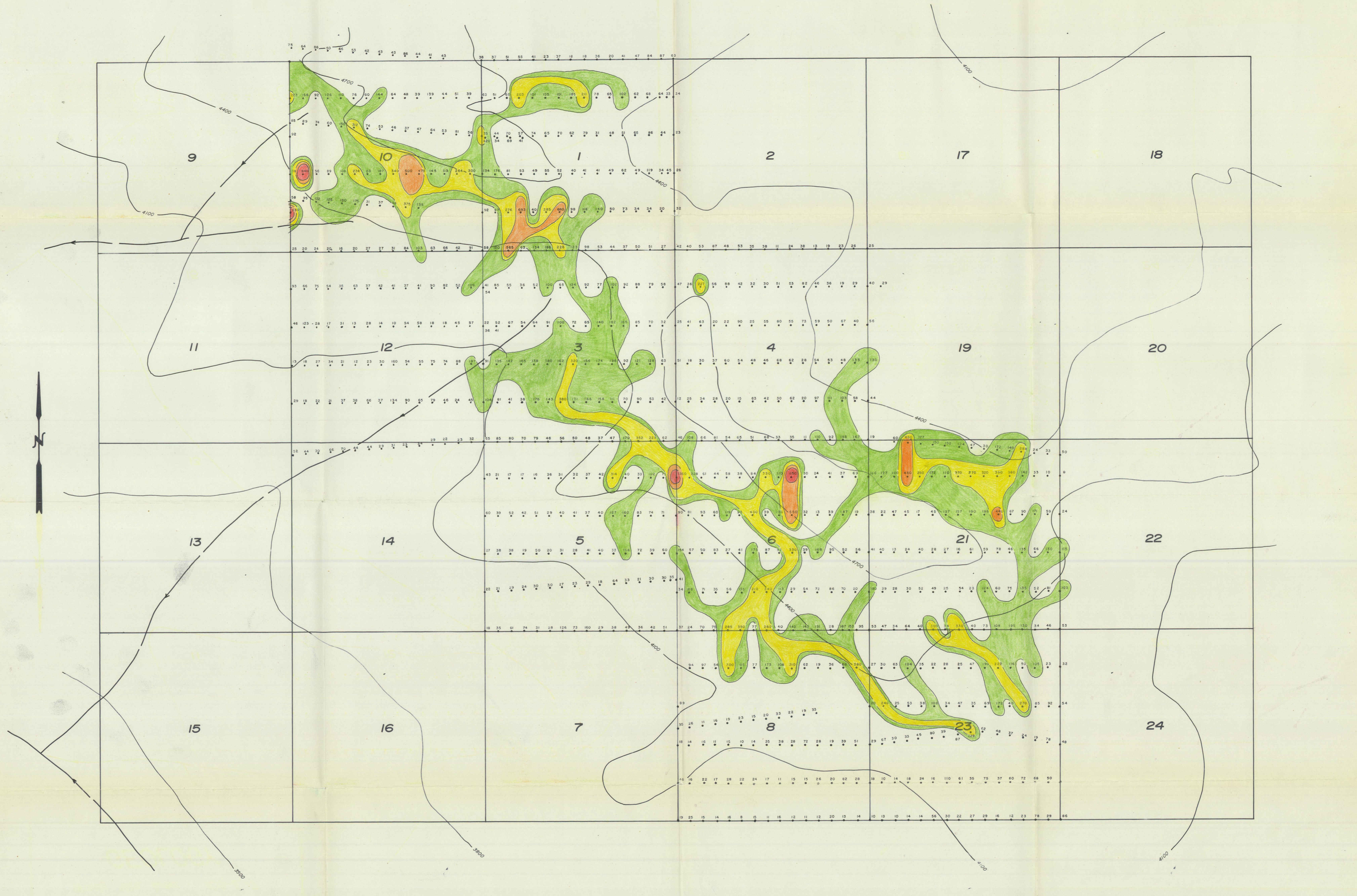
ASSAYS

Sample Location	oz/ton Ag	% Cu
17	0.14	0.26
37	0.12	0.04
44	0.12	0.13
50	0.12	0.28
52	0.12	0.18
53	0.04	0.01
71	0.12	0.41

UNITED KENO HILL MINES LTD.
 EXPLORATION DEPARTMENT WHITEHORSE, Y.T.
TUV CLAIM GROUP
 Windy Mtn. Area 105-E-7
GEOLOGY

300' 150' 0 300' 600' 900' 1200'
 Scale: 1" = 300 feet

Geology by P. Pangman

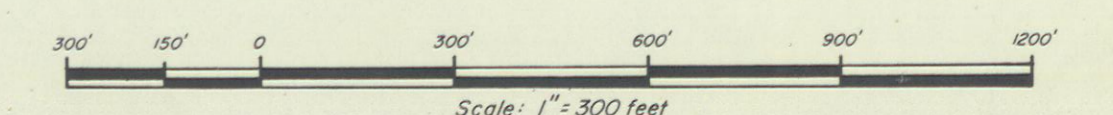


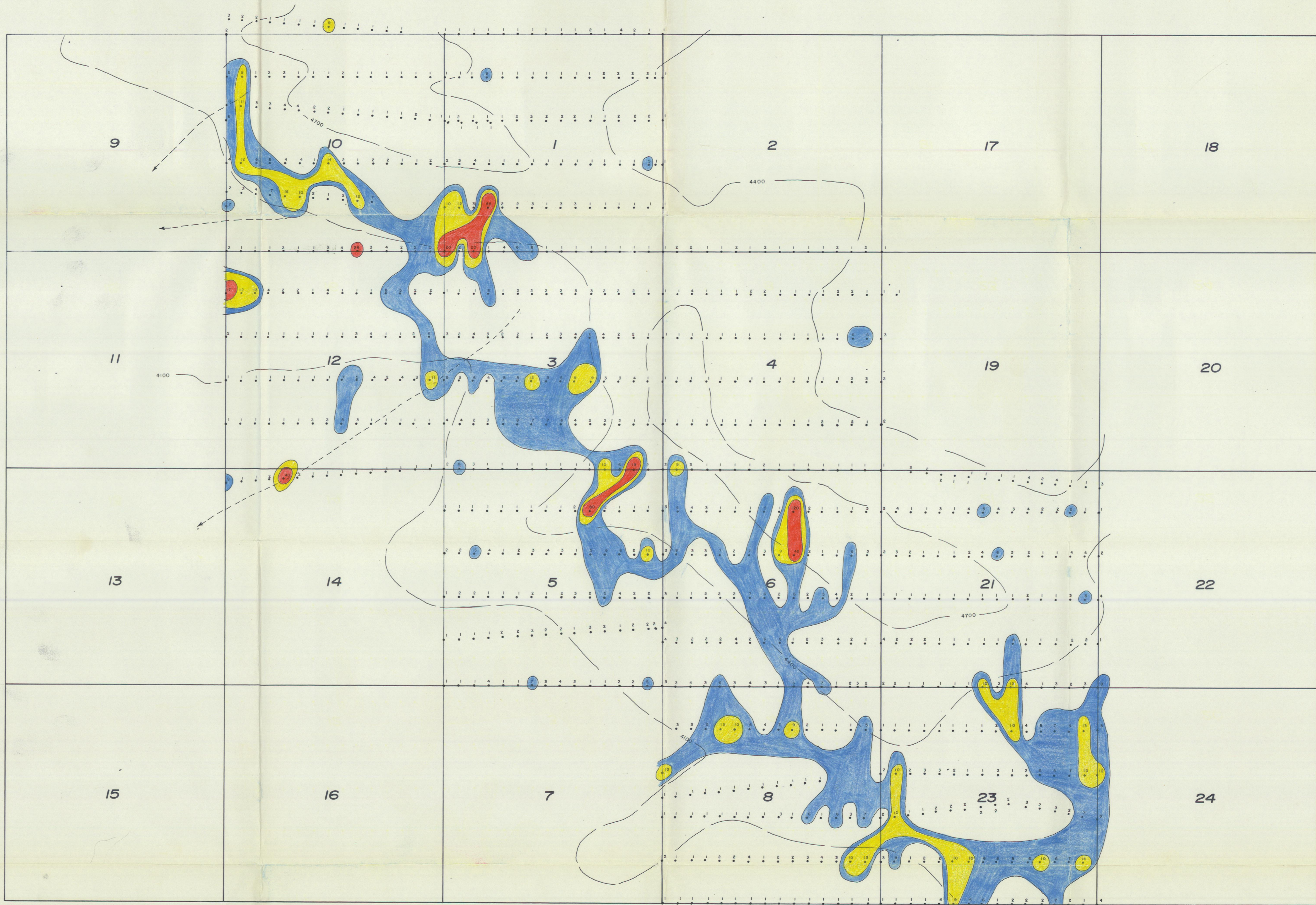
CONTOUR INTERVAL IN p.p.m. Cu

- > 800
- 400 - 800
- 200 - 400
- 100 - 200
- 50 - 100
- 0 - 50

UNITED KENO HILL MINES LTD.
EXPLORATION DEPARTMENT WHITEHORSE, Y.T.

TUV CLAIM GROUP
Windy Mtn. Area 105-E-7
COPPER PLOT





CONTOUR INTERVAL IN p.p.m. Mo

- > 16
- 9 - 16
- 5 - 8
- 3, 4
- 2
- 1

UNITED KENO HILL MINES LTD.
EXPLORATION DEPARTMENT WHITEHORSE, Y.T.

TUV CLAIM GROUP
Windy Mtn. Area 105-E-7

MOLYBDENUM PLOT

