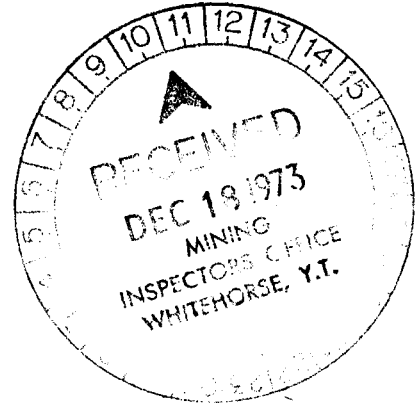


GEOLOGICAL AND GEOCHEMICAL REPORT

DYN CLAIM GROUP

Watson Lake Mining District
Yukon Territory



Longitude : 129°24' W.
Latitude : 62°33' N.

N.T.S. 105-I-11

Field Work covering the period
June 17th to August 7th, 1973
Report and Interpretation
October, 1973

This report has been examined by the
Geological Evaluation Unit and is recom-
mended to the Commissioner to be consid-
ered as representation work in the amount of

\$ 5264.75

Resident Geologist or
Resident Mining Engineer

By:

Colin I. Godwin, P.Eng. (B.C.)*

DYNASTY EXPLORATIONS LIMITED

October, 1973

Considered as representation work under
Section 53 (4) Yukon Quartz Mining Act.

Commissioner of Yukon Territory

TABLE OF CONTENTS

INTRODUCTION		
	Location and Access	1
	General	1
GEOCHEMISTRY		
	General	5
	Integrated Value	5
	Reconnaissance Geochemistry	7
	Detail Geochemistry	7
GEOLOGY	8
SUMMARY	10
RECOMMENDATIONS	10

TABLE	I	List of Claims	(iii)	
TABLE	II	Persons Involved in Work Program	(iii)	
TABLE	III	Classification of Dyn Samples		p.5
TABLE	IV	Calculation of Integrated Value Metal Characteristic		p.6
TABLE	V	Geologic Formations		p.9

APPENDIX	I	Summary of Costs
APPENDIX	II	Affidavit Supporting Summary of Costs
APPENDIX	III	Vouchers Supporting Summary of Costs

LIST OF MAPS AND FIGURES

Figure 1 Index Map - Claim Group - scale 1"= 16 miles

Figure 2 Gull, Dyn, Dea Groups - scale 1"= ½ mile

IN POCKET AT BACK OF REPORT

Map 1 Dyn-Dea Groups - scale 1"= ¼ mile

Map 2 Dyn Group Geology - scale 1"= ¼ mile

Map 3 Dyn Group Geochemistry - scale 1"= ¼ mile

Map 4 Dyn Group Geochemistry - scale 1"= ¼ mile

Map 5 Dyn Group, Pits in
vicinity S3C471L - scale 1"= 2'

TABLE I
LIST OF CLAIMS

<u>Claim</u>	<u>Claim Number</u>	<u>Grant Number</u>	<u>Recording Date</u>
DYN	1-24 inclusive	Y71139-Y71162	December 18, 1972

TABLE II
PERSONS INVOLVED IN WORK PROGRAM

John D. Curry	B.Sc., P. Geol.	Apt. 904, 9909-104th St., Edmonton, Alberta
Colin Godwin	B.A.Sc., P. Eng.	330-355 Burrard Street, Vancouver 1, B.C.
D. McCune	Geological Assistant	4021 W.13th Avenue, Vancouver, B.C.
G. May	Assistant	1379 W.58th Avenue, Vancouver 14, B.C.
L. Dellow	Assistant	1620 E.36th Avenue, Vancouver 15, B.C.
S. Morris	Cook	c/o Tom Stokie, P.O. Box 92, Fernie, B.C.

DYNASTY EXPLORATIONS LIMITED

330 MARINE BUILDING
355 BURRARD STREET
VANCOUVER 1, B. C.

GEOLOGICAL AND GEOCHEMICAL REPORT DYN CLAIM GROUP

INTRODUCTION

Location and Access

The Dyn Group is located approximately 108 miles east-northeast of Ross River, Y.T. (see Figure 1), on N.T.S. sheet 105-I-11 (see Figure 2). The property is in Yukon Territory but adjacent to Northwest Territories. Elevation of the property is approximately 5,000 feet and it lies almost entirely above treeline.

Access to the property has been by ski-equipped aircraft in winter on Dyn Lake (see Figure 2) and by helicopter from one of the few lakes (i.e. Cominco Lake) in the area that can be utilized by float planes. Dyn Lake is marginally suitable for float-equipped aircraft and break-up for this lake in 1973 was the beginning of July. A winter road from Tungsten, N.W.T. to within ten miles of the property was used by Placer Development during the winter of 1972-73 and construction of an all-weather road between Tungsten and the Placer Howard's Pass property is likely.

General

Claims Dyn 1 to Dyn 24 were staked during the winter of 1972-73 in response to the Placer lead-zinc discovery at Howard's Pass (see Table I: List of Claims).

Reconnaissance geochemical samples were collected over the fourteen days from June 17th to June 30th and the six days

DYNASTY EXPLORATIONS

SELWYN PROJECT-1973

CLAIM GROUPS:

- A: Prevo
- B: Pas
- C: Gull and Dyn
- D: Dea
- E: Tam
- F: Joy and Ajax
- G: Tap
- H: Ms
- I: Sand
- J: Gun
- K: Kee

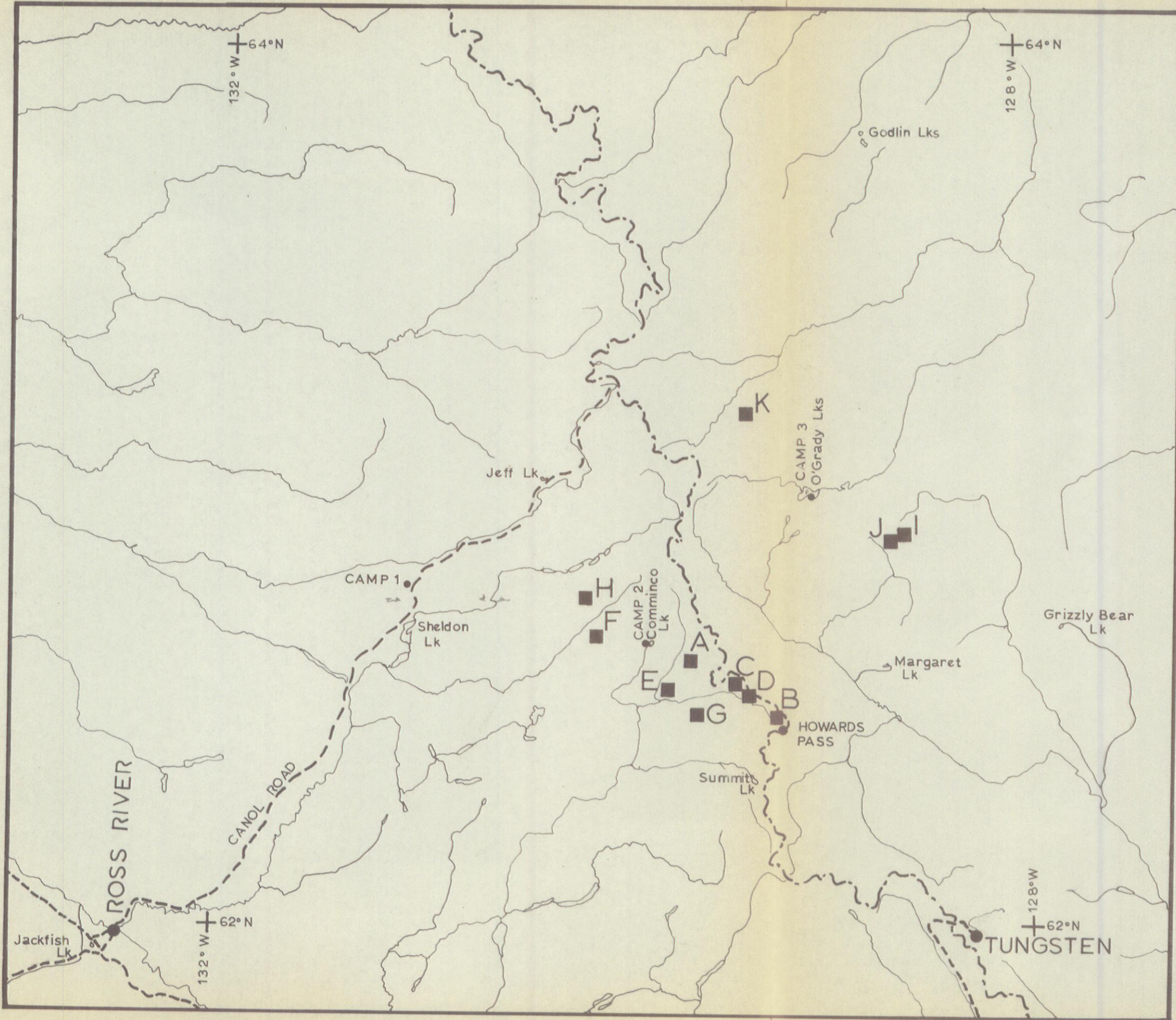
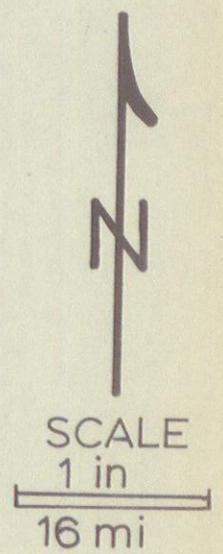
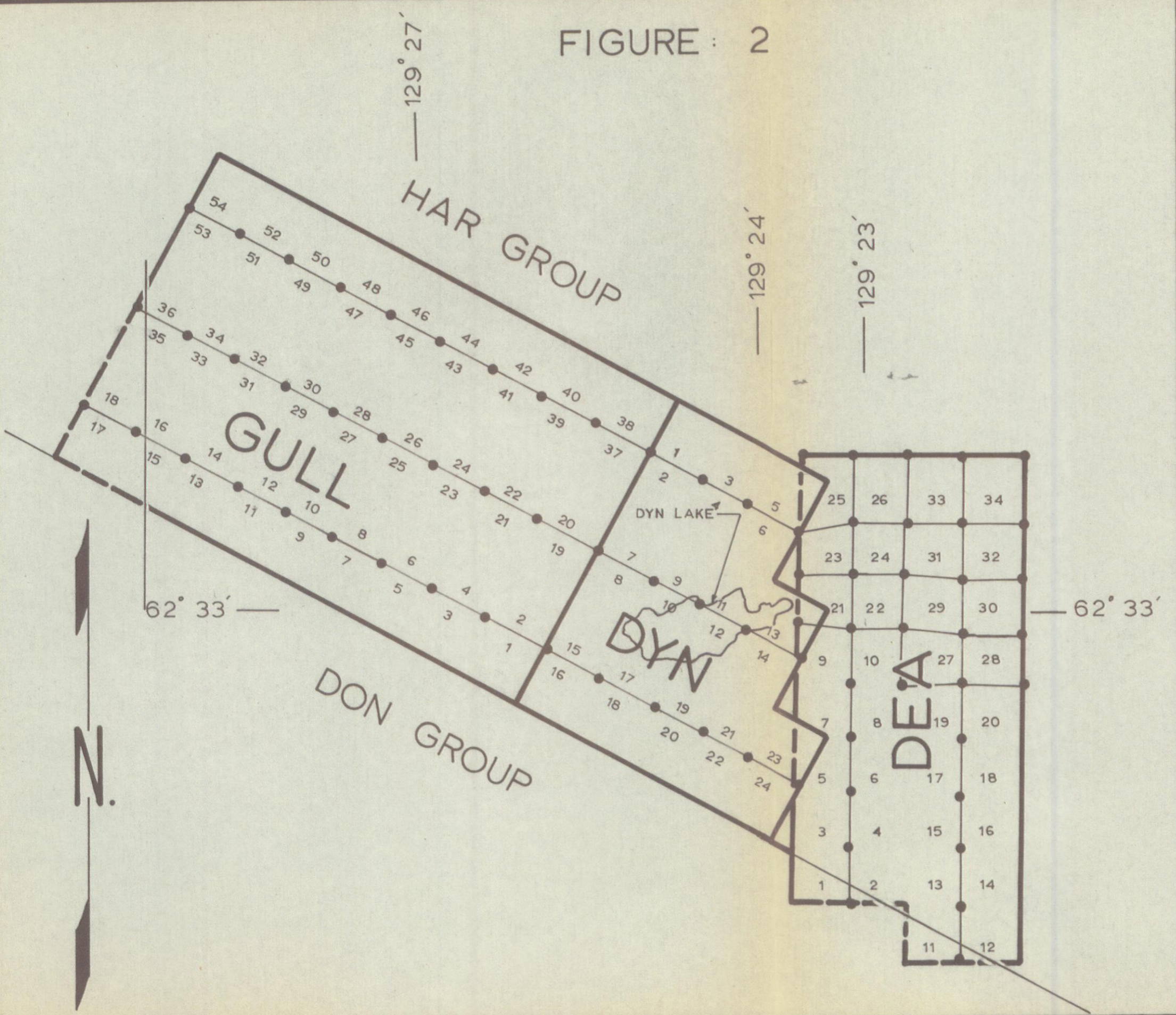


FIGURE 1:
Index Map
Claim Groups

FIGURE : 2

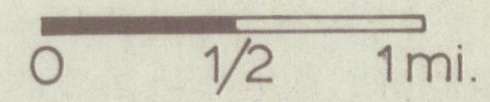


DYNASTY EXPLORATIONS

GULL DYN DEEA GROUPS

N.T.S.: 105 I-11

Scale: 1 in. = 1/2 mi.



LEGEND

- claim outline
- claim post
- 1/2 — claim line, name

SELWYN PROJECT
1973

from July 7th to July 12th and the group was mapped on a scale of 1 inch to $\frac{1}{4}$ mile. On August 7th, 1973, four pits were dug on claim Dyn 7 and rock and soil geochemical samples were collected. No significant targets were located as a result of this work.

Table II is a list of persons involved in the work program.

GEOCHEMISTRY

General

Table III classifies the type and number of samples taken on the Dyn Group. Analyses for copper, lead and zinc were performed by Acme Analytical Laboratories Ltd., 6455 Laurel Street, Burnaby 2, B.C. Analysis was by atomic absorption on perchloric acid digestion of minus 80 mesh sample.

TABLE III: CLASSIFICATION OF DYN SAMPLES

<u>Type</u>	<u>Approx. Area</u>	<u>Geochem: Cu, Pb, Zn.</u>		
		<u>Soil</u>	<u>Rock</u>	<u>Silt</u>
Regional	1.8 sq. miles	188	12	28
Detail	(4 pits)	<u>11</u>	<u>2</u>	<u>0</u>
	TOTALS	<u>199</u>	<u>14</u>	<u>28</u>

Integrated Value

An even number called here the integrated value for copper, lead and zinc is plotted at each sample site with a letter C (for copper, P for lead and Z for zinc) that defines the abundant metal(s) or metal characteristic(s) at the site.

Table IV shows how to calculate an integrated metal value for a site. The purpose of this scheme is to provide a summary map that will ensure that no anomalies from a single or additive geochemical result are lost. Zoning of metals should become apparent from progressions in metal characteristics.

TABLE IV: CALCULATION OF INTEGRATED VALUE AND METAL CHARACTERISTIC

A geochemical interpretation scheme for a total value representing copper + lead + zinc with pH taken into account.

<u>Metal</u>	<u>RANGE (PPM) AND COLOUR</u>		
	<u>Red (925)</u>	<u>Green (909)</u>	<u>Blue (903)</u>
Copper	≥ 120	90 - 119	70 - 89
Lead	≥ 50	40 - 49	30 - 39
Zinc	≥ 1000	600 - 999	300 - 599
Value	6	4	2

Notes:

(a) Adjustment for pH

if pH ≤ 5.0:

Copper, multiply ppm by 2
 Lead, do not change
 Zinc, multiply ppm by 5

(b) Bonus for High Results

<u>Bonus</u>	<u>Copper</u>	<u>Lead</u>	<u>Zinc</u>
2	240-359	100-149	2000-2999
4	360-479	150-199	3000-3999
6	≥ 480	≥ 200	≥ 4000

(c) Colour code for total value: Copper + Lead + Zinc

<u>Value</u>	<u>Colour</u>	<u>Interpretation</u>
≥ 18	Red (925)	High anomaly
12 to 16	Orange (918)	Intermediate anomaly
8 & 10	Green (909)	Low anomaly
6	Blue (903)	High threshold
4	Purple (931)	Low threshold
2 & 0	Blank	Background

(d) Metal character noted for copper, lead and zinc by: C, P, Z, respectively, only if value for each metal is ≥ 6.

Reconnaissance Geochemistry

Map 1 is a blow-up of air photo A12343-355 to a scale of 1 inch to $\frac{1}{4}$ mile. Map 3, a print of an overlay of Map 1, shows locations for all reconnaissance samples with sample name, type, pH (where applicable) and an integrated value for copper, lead and zinc. Map 4, a print of an overlay of Map 1, shows copper, lead and zinc results from reconnaissance geochemistry. Sample S3M471, which contained 78 ppm copper, 100 ppm lead and 620 ppm zinc, was the highest geochemical result obtained.

Detail Geochemistry

Four pits were put down in the vicinity of sample S3M471 (see Map 5) and some moderately interesting results were obtained from geochemical samples (S3C975L: 460 ppm copper, 34 ppm lead and 3980 ppm zinc). Results improve generally with increased depth of sampling. Bedrocks yield anomalous copper and zinc values but are far below levels of even moderate economic interest.

GEOLOGY

Map 2 is a print of an overlay from Map 1 and shows the general geology of Dyn Group. Table V illustrates geological formations on the group. 'Wavy-bedded' limestone (Unit 1) consisting of laminated buff and black-weathering dolomitic rock and grey limestone pebbles and bands is the lowest member of the sequence underlying Dyn Group. The unit probably grades upward into thinly laminated buff and black-weathering 'transitional' dolomitic rock (Unit 2) which is not seen in outcrop or float. The central part of the group is apparently underlain by black, sometimes calcareous shale (Unit 4), which occupies a synclinal trough or basin as defined to the north and south by east-southeasterly trending limestone ridges. The limestone ridges probably coincide with anticlinal structures, although attitudes in the limestone are confused and may reflect complex cross folding and/or faulting. Buff-weathering, pyritic, dolomitic argillite (Unit 5) occurs in float south of Dyn Lake and a fault is implied between Units 1 and 5, although this could reflect thinning of Unit 4.

Two right-handed faults, at approximately 030° , traverse the southeastern part of the claims and the area northwesterly from the group.

More detail mapping is not predicated because outcrops on the group are scarce.

TABLE V: GEOLOGICAL FORMATIONS

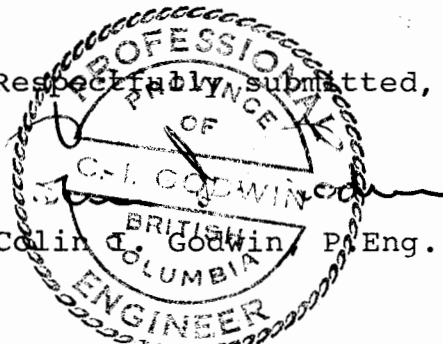
6	Black (calcareous) shale
5	Buff to orange weathering argillite, with black streaks, sometimes dolomitic and calcareous; pyrite blebs, disseminated pyrite
4	Black shale, partly calcareous; cherty shale, some pyrite
1a	Grey to black shaly limestone
1	Wavy-bedded limestone transitional rock plus grey limestone pebbles and bands

SUMMARY

Some anomalous copper and zinc geochemical values were obtained from soils and rocks on claim 7, which is underlain by black shales (Unit 4) considered to be stratigraphically similar to shales containing lead-zinc mineralization at Howard's Pass. No economically significant geochemical or geological targets were defined by the 1973 work program.

RECOMMENDATIONS

No strong targets have emerged from work conducted on Dyn Group to date. The fact that there is a comparable geological section between Howard's Pass and Dyn Group is encouraging. Sufficient work has been done in order to hold the claims at least until December 18th, 1974. No further work is recommended at this time, although the geology of the region may be better understood in the near future and additional work might then be considered.

Respectfully submitted,

C. I. Godwin
Colin I. Godwin, P. Eng. (B.C.)
The seal is circular with a double-line border. The outer ring contains the text 'PROFESSIONAL ENGINEER' at the top and 'BRITISH COLUMBIA' at the bottom. The inner circle contains 'OF' at the top, 'C. I. GODWIN' in the center, and 'P. Eng. (B.C.)' at the bottom. A signature is written across the seal.

October, 1973

Appendix I
Schedule "A"

SUMMARY OF COSTS
DYN CLAIM GROUP

	<u>Schedule Number</u>	<u>Wages</u>	<u>Expenditures</u>	<u>Total</u>
Geology	"B"	\$1,068.81	\$	
Geochemistry	"C"	594.01		
Assays	"C"	404.42		
Camp & Field Expenses	"D"	72.26	763.52	
Miscellaneous Transport.	"E"		188.80	
Rotary Wing	"E"		1,239.90	
Fixed Wing	"E"		<u>183.51</u>	
		<u>\$2,139.50</u>	<u>\$2,375.73</u>	<u>\$4,515.23</u>
District Expense	6%			<u>\$ 270.91</u>
				<u>\$4,786.14</u>
Administration	10%			<u>\$ 478.61</u>
				<u>\$5,264.75</u>
				<u>TOTAL COSTS</u>



412343-255

GULL

SWA DE

COL GROUP

DYN GROUP

DEA GROUP

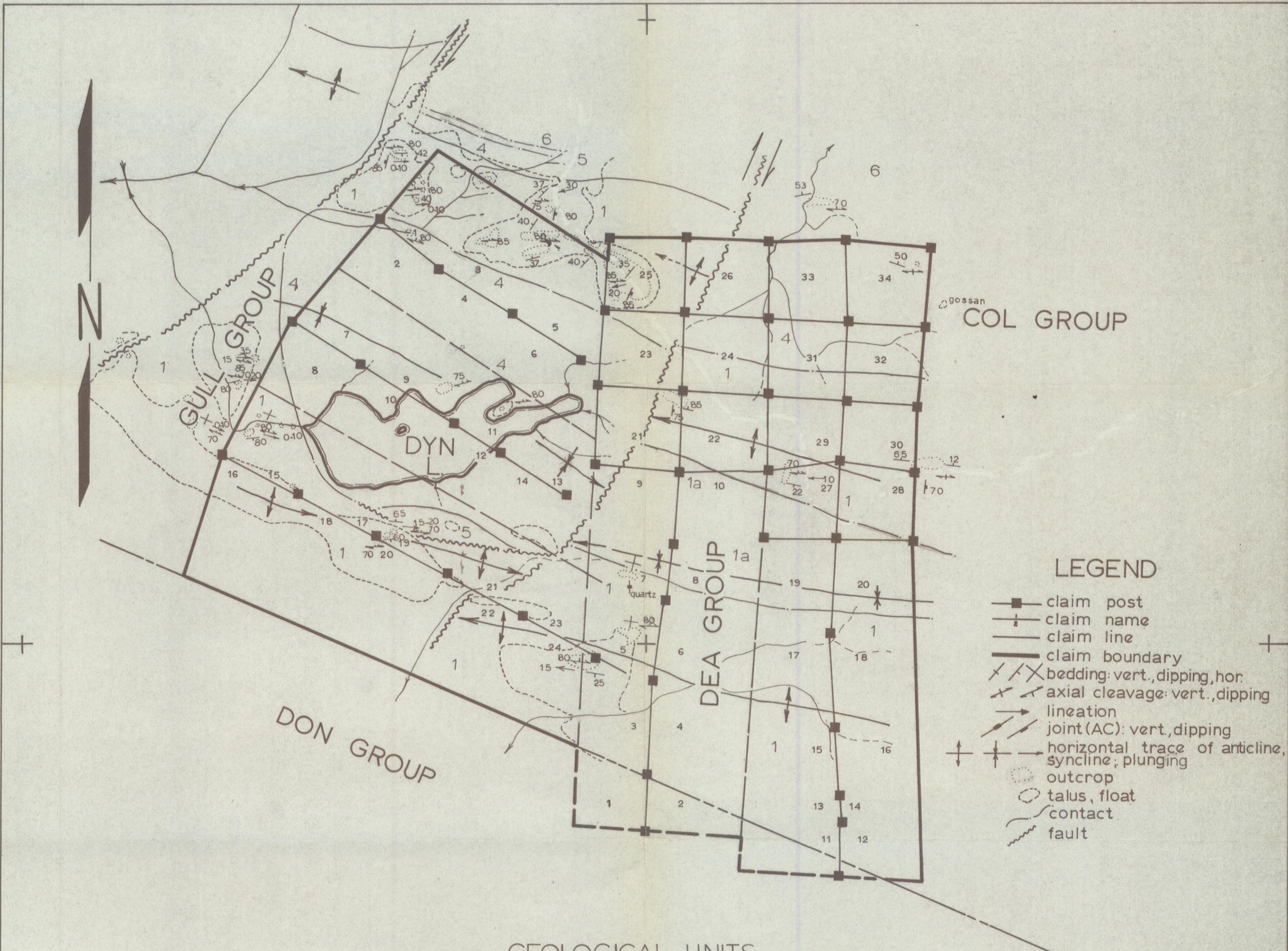
LEGEND

- claim posts
- claim area
- claim boundary
- claim boundary

DYNASTY EXPLORATION FIELD
DYN-DEA GROUPS

1:50,000

MAP



LEGEND

- claim post
- claim name
- claim line
- claim boundary
- X / X bedding: vert., dipping, hor.
- X / X axial cleavage: vert., dipping
- lineation
- ↗ joint (AC): vert., dipping
- ↑ horizontal trace of anticline, syncline; plunging
- outcrop
- talus, float
- contact
- fault

GEOLOGICAL UNITS

- 6 black (calcareous) shale. buff to orange weathering argillite, with black streaks, sometimes dolomitic and calcareous; pyrite blebs, disseminated pyrite.
- 5 black shale, partly calcareous; cherty shale, some pyrite
- 4 grey to black shaley limestone
- 1a wavy bedded limestone transitional rock plus grey limestone pebbles and bands
- 1

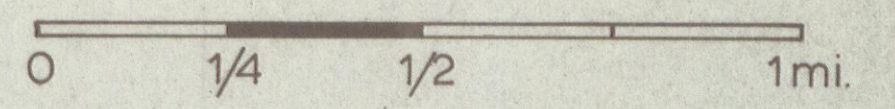
DYNASTY EXPLORATIONS LTD.

DYN GROUP

N.T.S.: 1051 - 11

GEOLOGY

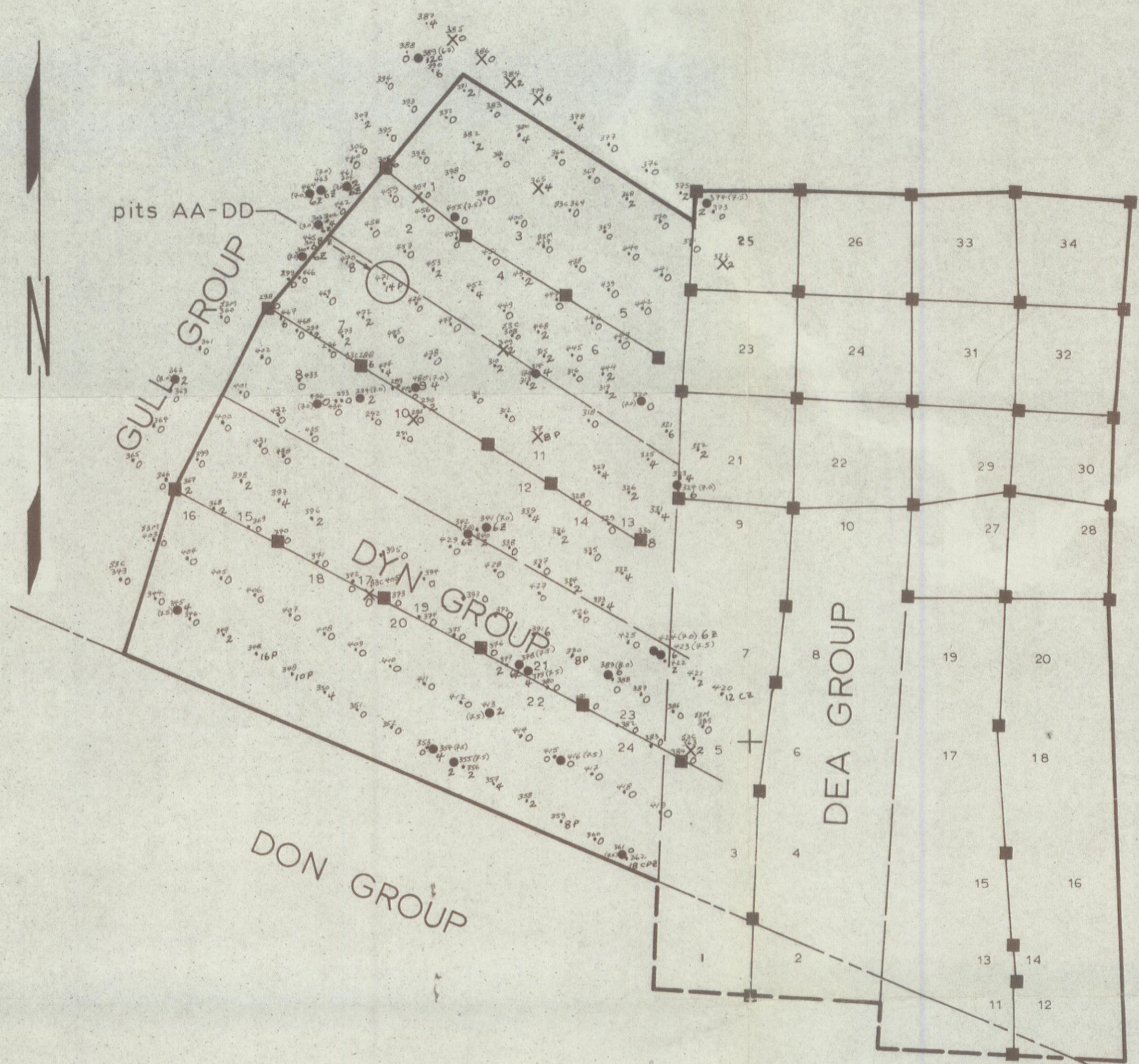
Scale: 1 in. 1/4 mi.



Geology by: John D. Curry

MAP: 2

photo no: A 12343-355



COL GROUP

LEGEND

- claim post
- claim name
- claim line
- claim boundary
- x rock - sample type
- silt
- soil
- other
- S3C127 - sample no.
- (6.5) - pH
- 13 - integrated metal value
- C=Cu, P=Pb, Z=Zn - metal character

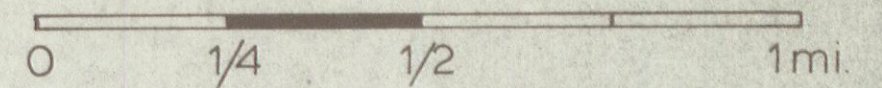
DYNASTY EXPLORATIONS LTD.

DYN GROUP

N.T.S. 1051 - 11

GEOCHEMISTRY

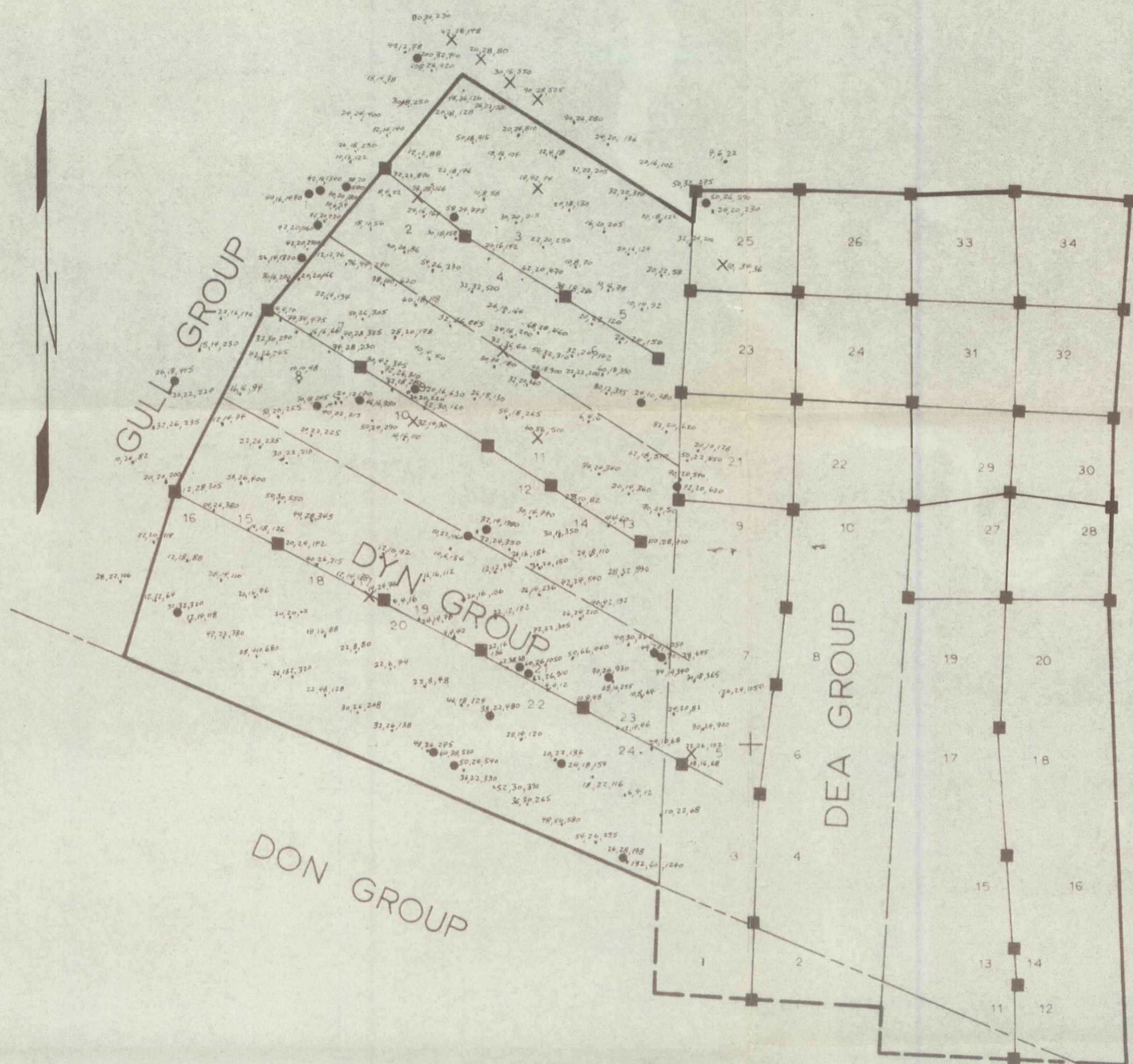
Scale: 1 in. 1/4 mi.



MAP: 3

photo no: A 12343-355





COL GROUP

LEGEND

- claim post
- claim name
- claim line
- claim boundary
- x rock - sample type
- silt
- soil
- other

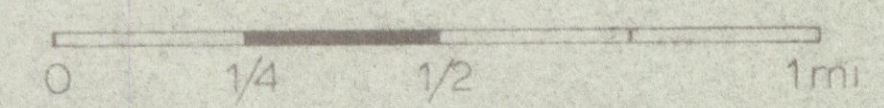
analysis in ppm: 122,25,457 =
Cu, Pb, Zn

DYNASTY EXPLORATIONS
LTD.

DYN GROUP
NTS 1051 - 11

GEOCHEMISTRY

Scale 1 in 1/4 mi



MAP: 4

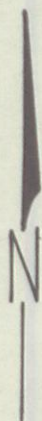
photo no. A 12343-355

□ PIT AA

PIT CC
□

+ S3C471L

□ PIT BB



□ PIT DD

Pits are approximately
150' - 200' N, S, E & W
of S3C471L.

Sample name: S3C471 ; type: L = soil
R = rock

Analysis in ppm : 10z, 51, 560 = Cu, Pb, Zn

Integrated metal value : 12

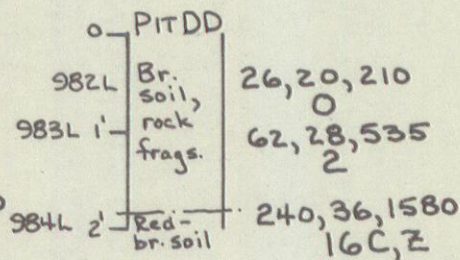
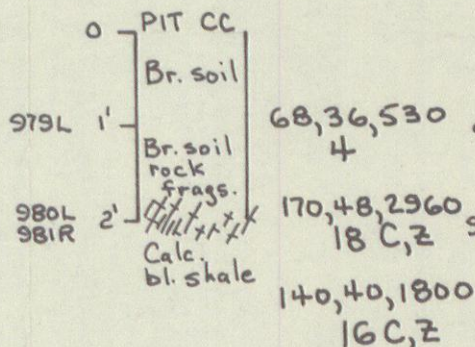
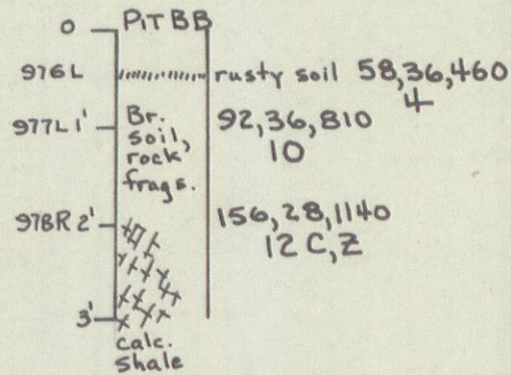
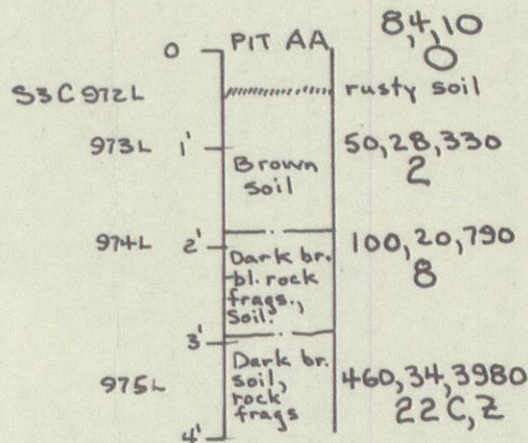
Metal characteristic : C = Cu, P = Pb, Z = Zn

DYN GROUP

PITS IN VICINITY

S3C471L

MAP: 5



Scale: as shown