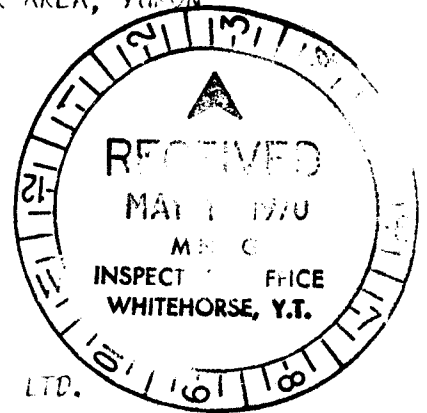


PRILLIMINARY COMPILATION, MAC CLAIMS, BOSWELL RIVER AREA, YUKON



PREPARED FOR:

MR. ANDREW McGRIGOR

McGRIGOR TELEPHONE AND POWER CONSTRUCTION CO. LTD.

JANUARY 17, 1979

K. WARREN GEIGER

CONSULTING GEOLOGIST

This report has been examined by the Geological Evaluation Unit and is recommended to the Commissioner to be considered as representation work in the amount of \$ 2300.00

A. G. Auden  
Resident Geologist or  
Resident Mining Engineer

Considered as representation work under Section 53 (4) Yukon Quartz Mining Act.

[Signature]  
Commissioner of Yukon Territory

## CONTENTS

	Page
Introduction . . . . .	1
Recommendations . . . . .	1
Phase I - Evaluation of the area by combined color photography and false-color infra-red photography . . . . .	2
Phase II - Surface exploration of the property.	3
Phase III - Detailed mapping and sampling of the most encouraging areas . . . . .	3
Phase IV - Test drilling . . . . .	4
Exploration to Date . . . . .	4
Economic Geology . . . . .	4
Summary . . . . .	7
References Cited . . . . .	10
Appendix A - Report on 1968 Geochemical Reconnaissance, Fox Group of Mineral Claims, Boswell River Mines Ltd. (NPL)	
Appendix B - Geochemical Assays	

## PRILIMINARY COMPILATION, MAC CLAIMS, BOSWELL RIVER AREA, YUKON

### INTRODUCTION

The Mac Group of 64 claims is located in the Sawtooth Mountain Range on the eastern side of the Teslin River Valley about 45 miles east north-east of Whitehorse, in the Yukon Territory. The property is located immediately south, although it does not adjoin directly, the Fox Group of claims owned by Boswell River Mines Ltd. on which has been outlined an important copper, lead and silver mineral deposit. The Mac Group lies about 3 miles due south of the discovery area (Fig. 1, Fig. 2). Access to the area is by helicopter or tote road. The tote or bush road to the Fox Claims of Boswell River Mines passes within two miles of the property and this road connects to the old Canol road and thus to the Alaska Highway and Johnsons Crossing.

### RECOMMENDATIONS

The results of the reconnaissance geochemical survey on the property are encouraging and have served to outline target areas for detailed investigation. As a minimum program, the target areas, (generally the areas including the anomalous and threshold values for copper but also the anomalous areas for molybdenum and lead), should be checked and mapped in detail on the ground. More detailed

sampling for geochemical analysis should follow to more accurately outline the anomalies.

Although the use of combined color photography and false-color infra-red photography is not completely necessary for the exploration of the Mac Claims, the writer feels that interpretation using the combined photography, and backed up by field checking, would be a very useful tool in evaluating the property.

If a grassroots exploration program of the surrounding area is desired, interpretation of color, and false-color infra-red, photographs would seem to provide the basis for an effective and low cost exploration program. In recommending a program, the writer includes the photographing and evaluation of both the property and surrounding area by combined color, and false-color infra-red photography. The interpretive tool seems to allow an inexpensive and effective method for exploration of large areas, and the consequent chance to acquire important new mineralized land holdings.

The recommended program of exploration for the Mac Group is as follows:

Phase 1 - Evaluation of the area by combined color photography and false-color infra-red photography.

1. Photographing the area by false-color infra-red and Ektachrome M.S. film at two scales.
  - a) 1" = 200' or 1" = 500', an area of 2½ x 2½ mile, for detailed study of the anomalous areas on the Mac Group.
  - b) Small scale coverage (possibly 1" = 3,000') of an area of 20 x 40 miles surrounding the property for grassroots exploration.
2. Interpretation of the structure, rock types and anomalous

sulfide mineralization of the whole property using large-scale photography should be completed first. Interpolation and evaluation of the surrounding area on the small-scale photos should follow, and any interesting anomalous targets so found should be considered for ground checking and staking.

Estimated cost of phase I, \$10,000.00

Phase II - Surface exploration of the property

1. Routine prospecting of the whole property with particular emphasis on the areas of geochemical anomalies, and of targets established in phase I. Exposure of outcrop where possible by hand stripping.
2. Geological checking of the important showings.
3. Detailed geochemical sampling of key areas based on the evaluation to this point.
4. Prospecting and geological checking of any interesting prospects in the surrounding area as indicated by phase I. Any such prospects, if encouraging after ground checking, should be staked.

Estimated cost of phase II, \$15,000.00. If extension of the existing bush road to the property becomes necessary and justified add \$10,000.00

Phase III - Detailed mapping and sampling of the most encouraging areas

1. Based on the results of phases I and II stripping, trenching,

detailed mapping and sampling of the bedrock should be carried out where feasible. The use of heavy equipment would probably be necessary and could be timed to utilize the road-building equipment.

#### Phase IV - Test drilling

If justified by the results of phases I to III, the final proving of any mineral deposits would require a program of routine drilling either with diamond drills or rock drills.

#### EXPLORATION TO DATE

The only work completed on the property to date was a reconnaissance geochemical survey completed during the field season of 1969. The north-south claim boundaries were utilized for purposes of control and 400 soil samples were taken at intervals of 500'. The soil samples were analyzed for copper, molybdenum and lead, the results are tabulated in appendix B. The assay values have been plotted on a map of the claim group at a scale of 1" = 400' by M. P. Curcio (Fig. 3).

#### ECONOMIC GEOLOGY

According to the geologic map of the area (Mulligan, 1963) the Mac Claims are underlain by the same country rock types as the Fox Claims of Boswell River Mines, except that the proportion of the two rock types is different and the Fox Claims are shown to contain an andesite and dacite porphyry dike (Fig. 1). In his discussion of

the area Mulligan (1963) states that, "A cupriferous occurrence has been reported on a small creek flowing into Rosy Lake." This occurrence must be located in the area just to the west of the property.

The best information on mineralization in the area is given in a report on the 1968 geochemical reconnaissance survey conducted on the Fox Claims of Boswell River Mines Ltd., a copy of which has been included in this report as appendix A. Some of the more important conclusions drawn from this report are summarized as follows: There is a known association of high silver-galena and occasionally molybdenite mineralization with small porphyry dikes in the district. A large quartz-feldspar porphyry dike on the Fox Group has an area of intense pyritization associated with it. The dike also has large areas of associated anomalous silver, copper and lead values. One important copper anomaly conversely, is apparently controlled by a north-south trending geological structure of unstated but different character. The concentration ranges for lead, copper and silver as selected after careful inspection and analysis of the data by Barringer Research Ltd. of Toronto, who did the survey, are given below:

RANGE	Pb ppm	Cu ppm	Ag ppm
Background	0-35	0-36	0-0.1
Threshold	36-55	37-54	0.2-0.3
Anomalous	56-175 +175	+ 54	+0.3

In his interpretation of the results as given on a map included with the report (appendix A), the consultant, P. H. Sevensma uses

only the highest anomalies in the following ranges:

Copper greater than 101 parts per million.

Lead greater than 175 parts per million.

Silver greater than 1 part per million.

The anomalies thus indicated cover areas of several hundred to one or two thousand feet in width and one to several thousand feet in length.

The assay results of the soil sampling carried out under the supervision of Michel P. Curcio, and plotted by him on figure 3 have been contoured by the writer for ease of interpretation. The geochemical ranges used are only slightly different from those proposed by Barringer Research Ltd. The areas in which anomalously high values were obtained are largest for copper, smaller for molybdenum but still important, and almost absent for lead. No analyses were done for silver. In the case of copper the isopach intervals for background threshold and anomalous areas are all contoured. In the case of molybdenum only the anomalous areas are given and are shown by means of a circled X at the sample point. The two lead anomalies are shown by writing Pb at the sample points. For the purposes of this report target areas are considered to be within the anomalous and threshold isopach lines for copper and the anomalous areas of molybdenum and lead. The results of the interpretation show a concentration of target areas near the western margin, and particularly in the south-western quarter of the property.

The results of the reconnaissance geochemical survey are encouraging and justify a more detailed program of exploration. The next stage of exploration should include ground checking and mapping of the area to determine the character of the mineralization including its associated rock types and other geological controls. Emphasis should be placed on the main target areas in the southwest corner of the property. A more detailed geochemical survey of the target areas should be done to outline more accurately the main anomalies.

If further exploration were contemplated outside the present property but in the same general area of the Yukon, consideration should be given to flying the present property with large-scale combined color photography and false-color infra-red photography, and a larger area, specifically where ground is open, with combined color and false-color infra-red photography at a very small scale. In this way the combined photography could be used to help interpret the geology of the present block and using the present block as a standard, to outline new target areas for acquisition.

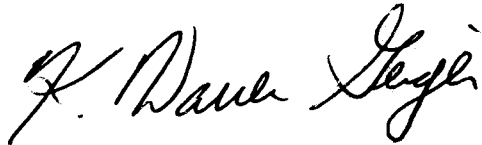
#### SUMMARY

The Mac Group of claims is located in the Yukon Territory, immediately south of the Fox Group of claims owned by Boswell River Mines Ltd., on which has been outlined an important copper, lead and silver mineral deposit.

A reconnaissance geochemical survey carried out during the

summer of 1969 has outlined interesting copper-molybdenum anomalies.

A systematic and comprehensive exploration program is recommended to determine the actual mineral potential of the property.



Edmonton, Jan. 17, 1970

---

K. Warren Geiger, Ph. D., P. Geol.,  
Consulting Geologist

1. I, K. Warren Geiger, am a consulting geologist residing at 42 Glenmore Crescent, St. Albert, Alberta
2. I have a B. Sc. in Mining Engineering from the University of Alberta at Edmonton and M. S. and Ph. D. degrees in Geology from Cornell University, Ithaca, New York.
3. I am a Professional Geologist registered with the Association of Professional Engineers, Geologists and Geophysicists of Alberta.
4. I possess fourteen years of experience in the fields of mineral exploration, mining and groundwater geology.
5. I have no material interest in the Mac Group of Mineral Claims, actual or contemplated.

Within the scope of this report, all information and conclusions are believed to be accurate.



Edmonton, Jan. 17, 1970

---

K. Warren Geiger, Ph. D., P. Geol.,  
Consulting Geologist,  
42 Glenmore Crescent,  
St. Albert, Alberta.

REFERENCES CITED

Mulligan, R. (1963): *Geology of Teslin map-area, Yukon Territory;*  
*Geol. Surv. Can. memoir 326, 96 pages. Geol. map 1125A.*



### LEGEND

MISSISSIPPIAN OR EARLIER (MAINLY)  
BIG SALMON COMPLEX

**1** SCHIST, GNEISS, QUARTZITE, GREENSTONE, LIMESTONE; MAY BE IN PART EQUIVALENT TO YOUNGER UNITS; 1a, CHIEFLY QUARTZITE AND QUARTZ-MICA SCHIST AND GNEISS; 1b, CHIEFLY DARK ARGILLACEOUS SLATE, SCHIST, QUARTZITE; 1c, LIMESTONE; 1d, CHIEFLY GREEN, CHLORITIC AND EPIDOTIC ROCKS, BIOTITE SCHIST, AMPHIBOLITE.

CRETACEOUS

**13** COAST AND CASSIAR INTRUSIONS  
GRANITE, GRANODIORITE, DIORITE; 13a, GABBRO  
DIORITE, HORNBLENDITE, PYROXENITE,  
GRANODIORITE; 13b, SYENITE, MONZONITE, GABBRO;  
GRANODIORITE, DIORITE

QUATERNARY

**15** PLEISTOCENE AND RECENT  
DRIFT AND ALLUVIUM

**A** QUARTZ-HORNBLENDE AND QUARTZ-FELDSPAR-HORNBLENDE GNEISS AND AMPHIBOLITE; DIORITE (?), AT LEAST IN PART DERIVED FROM 1.

CRETACEOUS AND (?) TERTIARY

**14** ANDESITE AND DACITE PORPHYRY AND AGGLOMERATE, FELDSPAR-QUARTZ PORPHYRY AND FELSITE DYKES.

TRIASSIC AND/OR JURASSIC

**9** UPPER TRIASSIC AND/OR JURASSIC  
ARGILLACEOUS SANDSTONE AND SILTSTONE,  
GREYWACKE; 9a, CONGLOMERATE; 9b, BLACK  
LIMESTONE; 9c, ASSOCIATED VOLCANIC ROCKS

## ANDREW MCGREGOR EXPLORATION

GEOLOGICAL MAP  
OF PART OF THE TESLIN AREA  
SHOWING THE LOCATION OF THE MAC GROUP  
AND THE FOX DISCOVERY GROUP  
OF CLAIMS

SCALE 4 3 2 1 0 4 MILES

K. WARREN GEIGER — CONSULTING GEOLOGIST  
EDMONTON, ALTA.

JAN. 16, 1969

APPENDIX A

REPORT ON 1968 GEOCHEMICAL RECONNAISSANCE

FOX GROUP OF MINERAL CLAIMS

BOSWELL RIVER MINES LTD. (NPL)



# BOSWELL RIVER MINES LTD.(N. P. L.)

8TH FLOOR BOARD OF TRADE TOWER · 1177 W. HASTINGS ST. · VANCOUVER 1, B.C. · 688-6023

## REPORT TO SHAREHOLDERS

October 31, 1968.

Dear Shareholder:

Your Board of Directors are pleased to make public the Barringer Research Report prepared for our consultant Dr. P.H. Sevensma, P.Eng. on the Fox Claim group, situated near the Boswell River, 50 air miles N.E. of Whitehorse.

Since this report, a copy of which is enclosed, an additional 170 claims have been staked to cover important ground in the immediate area adjoining the major discovery.

The enclosed Barringer Report with Dr. Sevensma's interpretation of results, attached maps and the minimum field budget of \$360,000.00 of which \$160,000.00 is allocated to diamond drill 20 holes at 500 feet depth, indicates the importance of this major discovery.

Dr. Sevensma concludes his budget, and we quote:

"It is expected that the additional soil sampling will reveal further targets to the northwest, and that the above estimate of drilling is a very minimum."

"The large silver-lead copper soil anomalies related to a major porphyry intrusion on the Fox Group form a prime exploration target with an unusually high probability of success."

The enclosed maps of anomalous zones are not of a geophysical nature but in simple language, actual assays taken from soil which is measured in parts per million and can only be related to actual mineralization.

We quote from Page 5 of the enclosed report:

"The obvious targets are the core area high in silver-lead-copper and measuring 2,000' x 2,000', and the N.S. trending high copper zone, 4,000' long, extending down to Chalco Creek."

"The core area of 2,000' x 2,000', located on a ridge ideally situated for open pit mining may reflect the presence of a significant volume of mineralized rock of the porphyry type."

The usual rule of thumb is that one half of the length will equal depth. Thus, a possible ore body of 2000' x 2000' x 1,000' at the rate of 10 cubic feet per ton, indicates a possible ore body potential in excess of 100,000,000 tons.

All possible efforts are now centered on the Fox Claims. Construction of a tote road from the property is now in progress, this, is to be followed by bulldozing and a recommended diamond drilling program. It is intended Exploration work is to be carried out all through the winter.

Yours truly,

BOSWELL RIVER MINES LTD. (NPL)

Fox & Star Group of Claims  
( 105-C-13 & 105-F-A)  
Whitehorse M.D., Y.T.

REPORT ON 1968 GEOCHEMICAL RECONNAISSANCE

1. Introduction:

The Fox group of claims was expanded to 90 claims in the spring of 1968 to cover a large 1500' porphyry dyke, intensely pyritized and oxidized at its eastern termination.

In view of the known association of high-silver galena and occasional molybdenite with the much smaller porphyry dykes on the Star group, it was decided to carry out a reconnaissance stream silt and soil sampling program during the month of August 1968 covering the area near the Fox porphyry. }

Results of this survey became available at the end of September 1968 and are summarized in the present report.

2. Property:

The area under consideration consists of the Star claims 5 to 20 and 32 to 39, a total of 24 claims, and the Fox 1 to 90 claims. The former group lies on the north bank of Boswell River and the latter on Red Mountain, south of Boswell River, at about 61° N and 133° 45' West.

The property lies 50 air miles east of Whitehorse and about 30 air miles west of the south end of Quiet Lake (Fig.1)

As the nearest lake for float-equipped aircraft is about 12 miles away, the access is by helicopter or by tote road.

3. History:

The Star Group has been under intermittent exploration since its discovery in 1915. E.J. Lees of the G.S.C. reported in 1936 that at that time he mapped the area in 1935, thirty claims had been staked by Indians on the west side of Red Mountain.

In 1966, Boswell River Mines concentrated its activities on the Star Group and in 1967 expanded its interest into the Red Mountain area.

The 1968 geochemical survey was the first program of any consequence carried out on this area. About 900 samples were taken at an overall cost of about \$12,000.00.

4. Geology:

The area is underlain by a metamorphic sequence, the Big Salmon

Complex, consisting of biotite quartz and chlorite quartz schists and marble and dolomite beds, striking NW with steep NNE or SSW dip. The claims lie near the S.W. margin of Quiet Lake Granodiorite batholith of Jurassic or later age. (Fig.1).

Quartz-felspar porphyry dykes form a U-shaped area, open to the W.N.W. Intense pyritization occurs at the S.E. Corner of this area, gradually diminishing along the 3 miles long southerly arm of the U.

Minor bodies of serpentinized ultrabasic rock are outlined by aeromagnetic anomalies.

5. Geochemical Survey:

A geochemical reconnaissance survey was carried out by Barringer Research Ltd. of Toronto between August 3rd and August 17th, 1968, who have provided a preliminary report as follows:-

QUOTE:

GENERAL

A geochemical soil sampling survey was undertaken on the Fox Claim area in the Yukon Territory in order to locate any source areas of copper, lead and silver mineral concentrations. In addition, a few stream sediment samples were collected in the general vicinity of the property.

The area is one of high topographic relief and since the soil sampling were collected on contour traverses rather than on a grid pattern, analyses were undertaken on the soil samples for lead and copper using a perchloric acid extraction followed by atomic absorption determination and for cyanide extractable silver. The stream sediment samples were analyzed for cyanide extractable silver and cold acid copper.

DISCUSSION OF RESULTS:

A. Soil Sample Survey:

The following concentration ranges for lead, copper and silver were selected after careful inspection and analysis of the analytical data:

	Pb	Cu	Ag
RANGE	ppm	ppm	ppm
Background	0-35	0-36	0-0.1
Threshold	36-55	37-54	0.2-0.3
Anomalous	56-175 +175	+ 54	+0.3

The distribution patterns of these three metals are generally similar. The only major discrepancy noted is in the northwest section of the area sampled where anomalous lead values are more widespread than those for copper and silver.

In general, the data outlined a relatively continuous and extensive anomalous area in the central southeast part of the property. As mentioned above anomalous lead values extend northwest across the ridge and then spread out around the flank of the hill. The lead anomaly is still open to the northwest.

The area of highest lead values has been outlined using the +175 ppm lead anomalous range. Within the area so delimited a peak value of 13,900 is recorded. In such a steep topographic environment there is no doubt that at least some mechanical dispossession of minerals will occur. Hence, the anomalous area defined by these three metals may be dispersed downslope from the bedrock source. The area enclosed by the +175 ppm lead value, however, suggests close proximity to the bedrock source as part of this anomalous zone coincides with a topographic high.

The anomalous metal values occurring along the valley area on the southwest section of the property may simply reflect accumulation of metal which has migrated from a source on a higher elevation. It should be noted, however, that anomalous copper values with associated but somewhat patchy anomalous lead values were detected to the southwest of the drainage, indicating the occurrence of some mineralization in the southwest part of the property.

#### B. STREAM SEDIMENT SURVEY

The addition of the stream sediment sample data does not aid the interpretation of the soil data. As can be seen the anomalous silver and to less extent copper values are relatively widespread compared to the anomalous soil data. Indeed, the silver values are anomalously high over almost the entire area of drainage sampled.

A stream sediment survey is most applicable when undertaken over a relatively large area in order to assess the broader mineral potential of the area and outline relatively large anomalous zones for more detailed investigation. The area thus covered by the stream sediment survey is too confined, and in general all lies within the mineralized area.

#### C. CONCLUSIONS AND RECOMMENDATIONS:

The lead, copper and silver soil results have outlined a relatively large and strong anomalous area in the central-southwest section of the property. More patchy anomalous values were also detected along the drainage in the southwest part of the property.

Three soil traverses lines were sampled across a known mineral occurrence in the Star Claim area.

The data are too few to make any conclusive interpretation except that the anomalous values at the centre traverse line coincide with the known mineral occurrence. There is also a suggestion of a relatively continuous but patchy anomalous trend across the three lines following a northeast-southwest direction.

The highest lead values are located on a topographic high suggesting little downslope migration from the bedrock source.

It is doubtful if geochemical surface methods can provide additional relevant data to locate the bedrock source of the mineralization more accurately. Geophysical methods will also be extremely limited in this type of terrain and mineralization.

It is recommended, therefore, that stripping of the overburden should commence in the area of highest lead values in order to examine the interpreted source rocks at this locale. The geophysical interpretation of this initial examination should then direct further investigations.

*U. G. G. G.*

6. Interpretation of Results:

The results of the survey are appended in the form of maps by Barringer Research Ltd. which are a record of the sample locations and values.

These maps have been interpreted by the writer using a topographic base prepared by Lockwood Survey Corporation Ltd.; a field copy of this base was used by the field crew to position their sample lines.

A. Stream Silt Survey

This survey revealed two pronounced copper anomalies leading to a source located in the general area of Red Mountain on the Fox Claims.

A pronounced silver anomaly occurs on one of these creeks as well, and an equally strong silver anomaly occurs in a creek barren of copper in the S.W. part of the property.

The creek with coincident high silver and copper has been named Silco Creek (see maps), Silver Creek has been chosen as name for the S.W. creek and the creek high in copper is identified as Chalco Creek.

B. Soil Survey.

The area presents a core of about 2,000'x2,000' where high silver, lead and copper coincide.

From this core, silver and lead extend to the northwest, the anomaly trending beyond the limits of the survey.

A subsidiary high silver lead peak lies close to the porphyry near the west edge of the survey.

The anomalous copper follows more or less the silver-lead north of the porphyry; south of the porphyry, copper predominates and extends well beyond the anomalous lead; high silver values in this area are mainly associated with copper.

The stream silt anomaly in Silver Creek suggests that another high silver area is present along the S.W. contact of the porphyry, beyond the boundary of the soil survey.

C. Summary.

The survey has proven the presence of a large area significantly anomalous in silver and base-metal and controlled by the main porphyry dyke..

A North South structure is the indicated control of the main copper mineralization, and the lead and silver highs also lie mostly along this trend .

The pyrite core lies a short distance east of the base metal core.

Obviously, the presence of a well mineralized porphyry body is indicated, unroofed only slightly by erosion, the latter having mainly affected the silver-lead halo which normally overlies the copper mineralization.

No assays for molybdenum are as yet available, but the presence of this metal is quite likely.

The obvious targets are the core area high in silver-lead-copper- and measuring 2,000'x2,000' , and the N.S.trending high copper zone, 4,000' long, extending down to Chalco Creek.

Other smaller areas or larger lower grade areas present very good targets as well.

#### ECONOMIC Potential

The location on the ridge, the high values of the core, the porphyry-controlled 2 1/2 mile long copper halo and the widespread anomalous silver indicate a prime exploration target.

The core area of 2,000'x2,000', located on a ridge ideally situated for open pit mining may reflect the presence of a significant volume of mineralized rock of the porphyry type.

A great many commercial copper-porphyrries are identifiable by a red halo due to oxidation of pyrite.

No prediction whatsoever can be made of the possible grade in place, other than that silver-lead ratios of 1:1 or better prevail in the area-that small galena veins have been found in a background lead area and that occasional coarse pyrite carrying 10-20% coarse galena has been found float in prospecting.

The geological environment, the stream silt anomalies, the soil anomalies and the topographical situation form a combination of factors indicating an unusually high probability of economic success.

#### Recommended Program:

The recommended program consists essentially of stripping by bulldozer and of diamond drilling, preceded by preparatory field work adjusted to circumstances.

This program requires the construction of about 30 miles of tote-road with some difficult sections, estimated to average \$2,000.00 per mile.

Additional soil sampling is only recommended at this time to the North West, to locate the extension of the mineralized zone beyond the boundaries of the August 1968 Survey.

The cost Breakdown is estimated as follows:

Tote Road Construction , 30 miles	\$ 60,000.00
Stripping, 400 hours at \$ 45.00	18,000.00
Soil Sampling, 600 samples at \$10.00	6,000.00
Geological Mapping, 12 man months	18,000.00
Local <sup>physical</sup> <del>geological</del> investigations	5,000.00
Camp Construction	6,000.00
Drilling, 20 holes at 500' at \$16.00	160,000.00
Transportation, freight, 20,000 miles at \$0.50	10,000.00
Engineering, Supervision	<u>30,000.00</u>
	<u>\$313,000.00</u>
Contingencies, 15%	<u>47,000.00</u>
Total Minimum Field Budget:	<u>\$360,000.00</u>

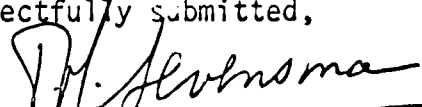
It is expected that the additional soil sampling will reveal further targets to the northwest, and that the above estimate of drilling is a very minimum.

Summary:

The large silver-lead copper soil anomalies related to a major prophyry intrusion on the Fox Group form a prime exploration target with an unusually high probability of success.

A minimum field budget of \$360,000.00 is recommended for an initial exploration program on this property.

Respectfully submitted,

  
P.H. Severisma, Ph.D. P.Eng.,

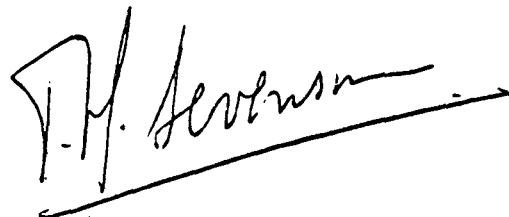
Dated at Vancouver, B.C.  
October 16, 1968.

CERTIFICATE

I, PIETER H. SEVENSMA, of 908, 1280 Haro Street, in the City of Vancouver, in the Province of British Columbia, DO HEREBY CERTIFY:

1. THAT I am a Consulting Geologist, with a business address at 715-850 West Hastings Street, in the City of Vancouver, in the Province of British Columbia.
2. THAT I am a graduate of the University of Geneva, Switzerland, (Physics and Chemistry, 1937; Geology and Mineralogy, 1937) where I obtained my Ph.D. in Geological and Mineralogical Sciences in 1941.
3. THAT I am a Registered Professional Engineer in the Geological Section of the Association of Professional Engineers of the Province of British Columbia and of the Association of Professional Engineers of Yukon Territory.
4. THAT I have practiced my profession as a geologist for the past 30 years.
5. THAT the information contained in my accompanying report is based on examinations in 1966, 1967 and on August 3rd, 1968.
6. THAT I have no direct or indirect interest in the Mineral Claims, the subject of my said report, or of any of the other properties of, or in any of the securities of Boswell River Mines Ltd., nor do I expect to receive any.

Dated this 16th day of October, 1968.

A handwritten signature in black ink, reading "P.H. Sevensma", written over a horizontal line that extends to the right.

P.H. Sevensma, Ph.D., P. Eng.

BOSWELL RIVER MINES LTD.  
STAR-FOX-DAN

BIG SALMON LAKE SCHIST BELT  
WHITEHORSE M.D. Y.T., 105-SW

P H SEVENSMA-- CONSULTANT

VANCOUVER, B.C.

MARCH, 1966

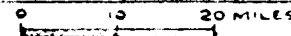
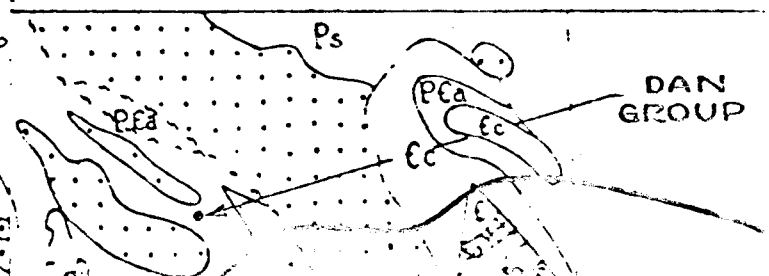
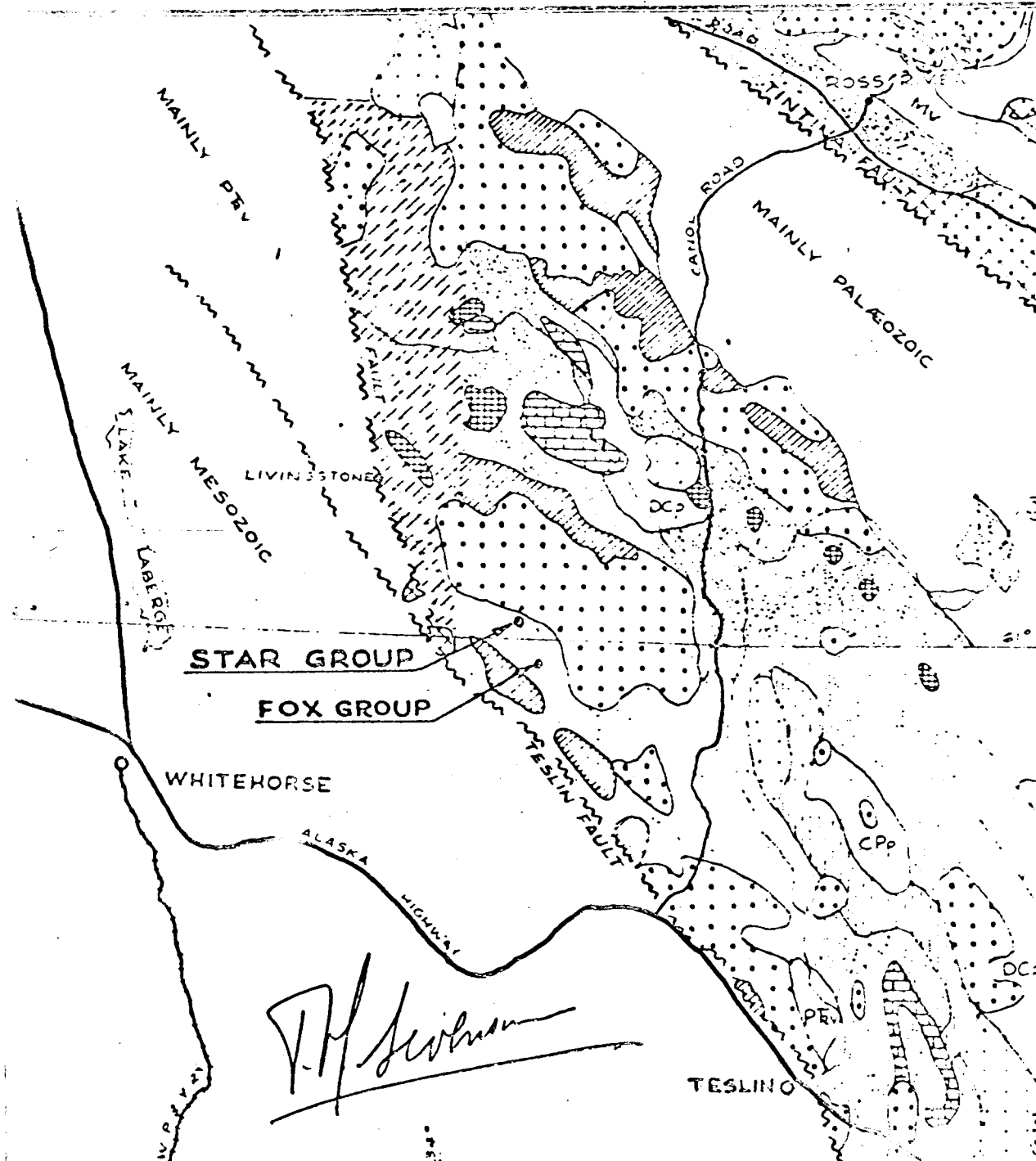


FIG 1

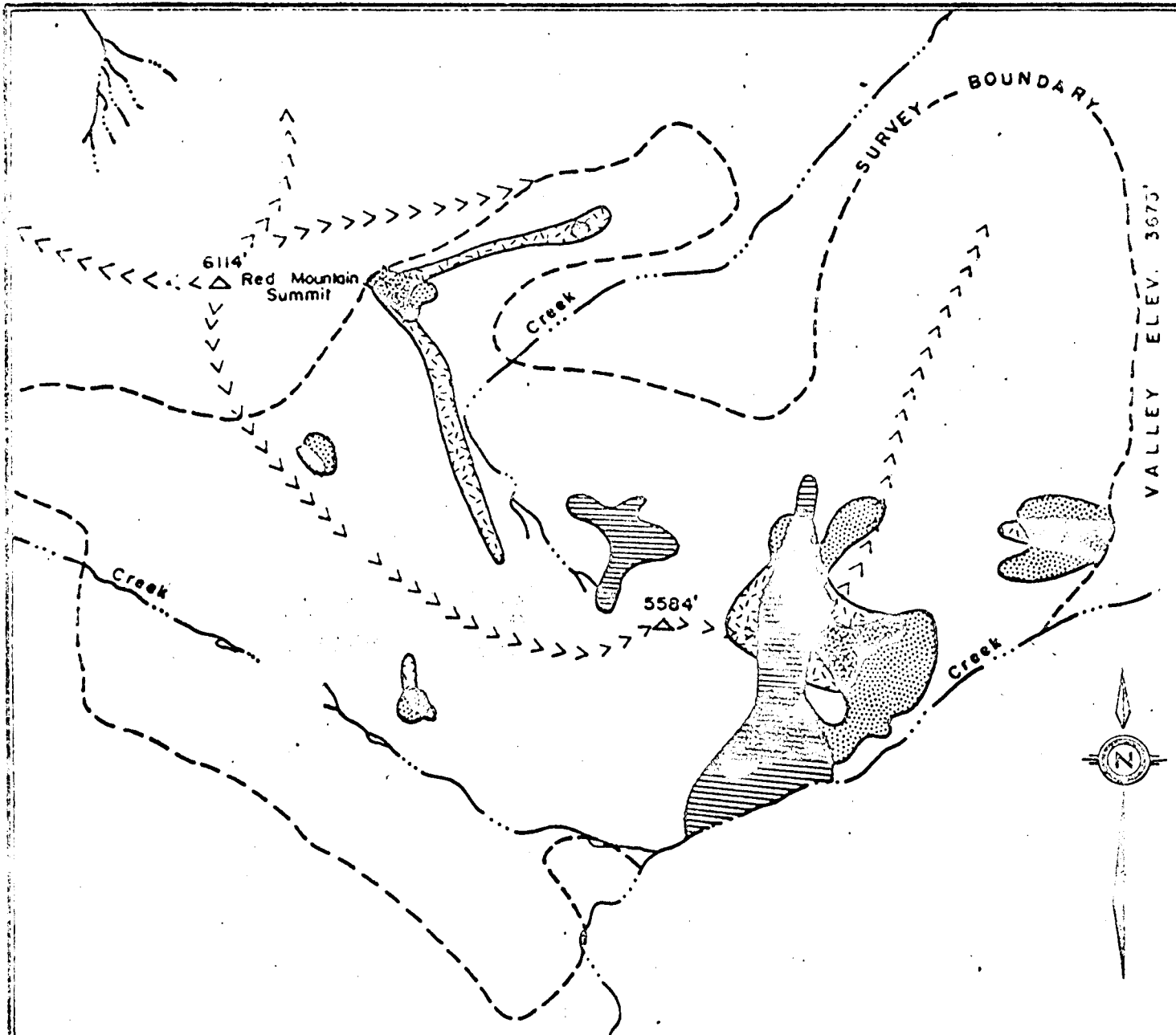
LEGEND

Map 30 - 1963

	Tv	Basalts etc. Tertiary
	4	Granitic porphyry
	3	Granodiorite Cretaceous
	PRV	Perm-Trias volcanics
	CPp	Carb-Perm. clastics
	CM	Mississ limestone chert
	DCv	Dev-Carb volcanics
	DCp	Dev-Carb clastics
	DCs	Dev-Carb schists
	M	Limestone marble
	I	Ultrabasics
	Ms	Quartz-mica-schists
	Mg	Granitic gneiss
	Miy	Yukon Grp schist gneiss not differentiated



*P.H. Sevensma*



COMPOSITE PLAN OF GEOCHEMICALLY  
ANOMALOUS ZONES

RESULTS OF SOIL SURVEY ONLY

Copper anomaly.. > 101 p.p.m. Cu.  
Lead..... > 175 p.p.m. Pb.  
Silver..... > 1 p.p.m. Ag.



BOSWELL RIVER MINES LTD.

Fox claims

P. H. Sevensma Consultants Ltd. — Vancouver.

0 2000'

Scale: Approx.

October 1968

APPENDIX B

GEOCHEMICAL ASSAYS

## CHEMICAL &amp; GEOLOGICAL LABORATORIES LIMITED

OPERATOR: MCGREGOR TELEPHONE & POWER CONSTRUCTION CO. REPORT NUMBER: E69-11267  
LTD.

DATE SAMPLED: --- DATE RECEIVED: Sept. 29, 1969 DATE REPORTED: Nov. 5, 1969

SAMPLE IDENTIFICATION: P.T.O. L 1 Series

KIND OF SAMPLE: Soils

<u>LABORATORY NUMBER</u>	<u>SAMPLE IDENTIFICATION</u>	<u>COPPER P.P.M.</u>	<u>MOLYBDENUM P.P.M.</u>	<u>LEAD P.P.M.</u>
E69-11267-1	L 1 S-0	29.0	< 0.5	7.5
E69-11267-2	-5	28.5	"	19.0
E69-11267-3	-10 Dark Green Rock	8.0	"	9.5
E69-11267-4	-10 Reddish Rock	71.5	"	7.0
E69-11267-5	-10 Soil	21.5	"	8.0
E69-11267-6	-15	23.5	"	7.0
E69-11267-7	-20	26.0	"	10.0
E69-11267-8	-25	23.5	"	13.5
E69-11267-9	-30	21.5	"	15.5
E69-11267-10	-35	51.5	"	9.0
E69-11267-11	-40	25.0	"	10.0
E69-11267-12	-45	11.0	"	13.0
E69-11267-13	-50	26.0	"	11.5
E69-11267-14	-55	13.5	"	10.0
E69-11267-15	-60	25.0	"	6.5
E69-11267-16	-65	42.5	"	5.5
E69-11267-17	-70	32.0	"	9.0

Continued .....

C.S.L. 55

CHEMICAL & GEOLOGICAL LABORATORIES LIMITED

PAGE 2.....

OPERATOR: MCGREGOR TELEPHONE & POWER CONSTRUCTION CO. REPORT NUMBER: E69-11267  
LTD.

DATE SAMPLED: --- DATE RECEIVED: Sept. 29, 1969 DATE REPORTED: Nov. 5, 1969

SAMPLE IDENTIFICATION: P.T.O. L 1 Series

KIND OF SAMPLE: Soils

<u>LABORATORY NUMBER</u>	<u>SAMPLE IDENTIFICATION</u>	<u>COPPER P.P.M.</u>	<u>MOLYBDENUM P.P.M.</u>	<u>LEAD P.P.M.</u>
E69-11267-18	L 1 S-75	12.0	< 0.5	6.5
E69-11267-19	-80	32.0	"	6.5
E69-11267-20	-85	31.0	"	8.0
E69-11267-21	-90	20.5	"	6.5
E69-11267-22	-95	25.5	"	10.0
E69-11267-23	-100	27.0	"	11.0
E69-11267-24	-105 Soil	40.5	"	12.5
E69-11267-25	-105 Sludge	33.5	"	8.5
E69-11267-26	-110	41.0	"	9.0
E69-11267-27	-115	28.0	"	10.0

64

**CHEMICAL & GEOLOGICAL LABORATORIES LIMITED**

OPERATOR: MCGREGOR TELEPHONE & POWER CONSTRUCTION CO.    REPORT NUMBER: E69-11298  
LTD.

DATE SAMPLED: ---

DATE RECEIVED: Sept. 29, 1969

DATE REPORTED: Nov. 5, 1969

SAMPLE IDENTIFICATION: P.T.O. L 2 Series

KIND OF SAMPLE: Soils

<u>LABORATORY NUMBER</u>	<u>SAMPLE IDENTIFICATION</u>	<u>COPPER P.P.M.</u>	<u>MOLYBDENUM P.P.M.</u>	<u>LEAD P.P.M.</u>
E69-11298-1	L 2 S-0	37.0	< 0.5	10.0
E69-11298-2	-5	34.0	"	9.0
E69-11298-3	-10	103.5	"	8.0
E69-11298-4	-15	20.5	"	8.0
E69-11298-5	-20	42.5	"	9.0
E69-11298-6	-25 Black Oil	34.0	"	10.0
E69-11298-7	-25 Brown Oil	17.0	"	9.0
E69-11298-8	-30	31.5	"	8.0
E69-11298-9	-35	29.0	"	7.0
E69-11298-10	-40	5	"	10.0
E69-11298-11	-45	21.0	"	9.0
E69-11298-12	-50	41.0	"	11.5
E69-11298-13	-55	21.0	"	13.0
E69-11298-14	-60	20.0	"	8.0
E69-11298-15	-65	42.0	"	11.0
E69-11298-16	-70	32.5	"	10.5

Continued .....

## CHEMICAL &amp; GEOLOGICAL LABORATORIES LIMITED

PAGE 2 .....

OPERATOR: MCGREGOR TELEPHONE &amp; POWER CONSTRUCTION CO. LTD. REPORT NUMBER: E69-11298

DATE SAMPLED: --- DATE RECEIVED: Sept. 29, 1969 DATE REPORTED: Nov. 5, 1969

SAMPLE IDENTIFICATION: P.T.O. L 2 Series

KIND OF SAMPLE: Soils

<u>LABORATORY NUMBER</u>	<u>SAMPLE IDENTIFICATION</u>	<u>COPPER P.P.M.</u>	<u>MOLYBDENUM P.P.M.</u>	<u>LEAD P.P.M.</u>
E69-11298-17	L 2 S-75	15.5	<0.5	10.0
E69-11298-18	-80	30.0	"	8.0
E69-11298-19	-85	111.0	"	7.0
E69-11298-20	-90	45.0	"	10.0
E69-11298-21	-95	29.5	"	12.5
E69-11298-22	-100	30.0	"	10.0
E69-11298-23	-105	91.0	"	8.0

C 64

CHEMICAL & GEOLOGICAL LABORATORIES LIMITED

OPERATOR: MCGREGOR TELEPHONE & POWER CONSTRUCTION CO. REPORT NUMBER: E69-11506  
LTD.

DATE SAMPLED: ---

DATE RECEIVED: Sept. 29, 1969

DATE REPORTED: Nov. 5, 1969

SAMPLE IDENTIFICATION: P.T.O L 3 Series

KIND OF SAMPLE: Soils

<u>LABORATORY NUMBER</u>	<u>SAMPLE IDENTIFICATION</u>	<u>COPPER P.P.M.</u>	<u>MOLYBDENUM P.P.M.</u>	<u>LEAD P.P.M.</u>
E69-11506-1	L 3 S-0	17.4	<0.5	11.2
E69-11506-2	-5	33.0	"	17.8
E69-11506-3	-10	24.0	"	9.8
E69-11506-4	-15	36.0	"	7.6
E69-11506-5	-20	21.6	"	12.4
E69-11506-6	-25	28.0	"	17.6
E69-11506-7	-30	23.0	"	9.8
E69-11506-8	-35	38.0	"	7.2
E69-11506-9	-40	21.8	"	9.8
E69-11506-10	-45	11.2	"	4.0
E69-11506-11	-50	26.8	"	14.0
E69-11506-12	-55	92.0	"	14.8
E69-11506-13	-60	22.0	"	5.6
E69-11506-14	-65	20.6	"	9.8
E69-11506-15	-70	31.8	"	11.0
E69-11506-16	-75	31.2	"	5.6
E69-11506-17	-80	41.0	"	6.0

## CHEMICAL &amp; GEOLOGICAL LABORATORIES LIMITED

PAGE 2 . . . . .

OPERATOR: MCGREGOR TELEPHONE &amp; POWER CONSTRUCTION CO. LTD. REPORT NUMBER: E69-11506

DATE SAMPLED: ---

DATE RECEIVED: Sept. 29, 1969

DATE REPORTED: Nov. 5, 1969

SAMPLE IDENTIFICATION: P.T.O. L 3 Series

KIND OF SAMPLE: Soils

<u>LABORATORY NUMBER</u>	<u>SAMPLE IDENTIFICATION</u>	<u>COPPER P.P.M.</u>	<u>MOLYBDENUM P.P.M.</u>	<u>LEAD P.P.M.</u>
E69-11506-18	L 3 S-85	30.0	< 0.5	7.2
E69-11506-19	-90	28.6	"	5.2
E69-11506-20	-95	150.0	"	9.2
E69-11506-21	-100	35.0	"	8.4
E69-11506-22	-105	35.8	"	6.0
E69-11506-23	-110	33.0	"	3.6
E69-11506-24	-115	30.2	"	5.4
E69-11506-25	-120 Brown Soil	22.0	"	8.0
E69-11506-26	-120 Sludge	83.0	"	8.0

CHEMICAL & GEOLOGICAL LABORATORIES LIMITED

OPERATOR: MCGREGOR TELEPHONE & POWER CONSTRUCTION CO. REPORT NUMBER: E69-11507  
LTD.

DATE SAMPLED: ---

DATE RECEIVED: Sept. 29, 1969

DATE REPORTED: Nov. 5, 1969

SAMPLE IDENTIFICATION: P.T.O. L 4 Series

KIND OF SAMPLE: Soils

<u>LABORATORY NUMBER</u>	<u>SAMPLE IDENTIFICATION</u>	<u>COPPER P.P.M.</u>	<u>MOLYBDENUM P.P.M.</u>	<u>LEAD P.P.M.</u>
E69-11507-1	L 4 S-0	24.0	< 0.5	7.0
E69-11507-2	-5	13.6	"	9.2
E69-11507-3	-10	40.0	"	6.2
E69-11507-4	-15	62.0	"	9.0
E69-11507-5	-20	27.6	"	9.8
E69-11507-6	-25	32.2	"	11.8
E69-11507-7	-30	14.0	"	7.0
E69-11507-8	-35	13.4	"	7.2
E69-11507-9	-40	23.4	"	9.0
E69-11507-10	-45	26.8	"	12.4
E69-11507-11	-50	45.2	"	5.6
E69-11507-12	-55	37.6	"	7.8
E69-11507-13	-60	22.4	"	10.2
E69-11507-14	-65	28.8	"	9.2
E69-11507-15	-70	30.4	"	7.2
E69-11507-16	-75	20.0	"	62.0

Continued .....

## CHEMICAL &amp; GEOLOGICAL LABORATORIES LIMITED

PAGE 2 .....

OPERATOR: MCGREGOR TELEPHONE & POWER CONSTRUCTION CO. REPORT NUMBER: E69-11507  
LTD.

DATE SAMPLED: ---

DATE RECEIVED: Sept. 29, 1969

DATE REPORTED: Nov. 5, 1969

SAMPLE IDENTIFICATION: P.T.O. L 4 Series

KIND OF SAMPLE: Soils

<u>LABORATORY NUMBER</u>	<u>SAMPLE IDENTIFICATION</u>	<u>COPPER P.P.M.</u>	<u>MOLYBDENUM P.P.M.</u>	<u>LEAD P.P.M.</u>
E69-11507-17	L 4 S-80	13.6	<0.5	4.0
E69-11507-18	-85	17.2	"	10.6
E69-11507-19	-90	17.6	"	7.6
E69-11507-20	-95	26.6	"	5.2
E69-11507-21	-100	35.0	"	5.6
E69-11507-22	-105	54.6	"	3.6
E69-11507-23	-110	40.6	"	2.0
E69-11507-24	-115	49.4	"	7.2
E69-11507-25	-120	48.0	"	6.6

# CHEMICAL & GEOLOGICAL LABORATORIES LIMITED

OPERATOR: MCGREGOR TELEPHONE & POWER CONSTRUCTION CO. REPORT NUMBER: E69-11508  
LTD.

DATE SAMPLED: ---

DATE RECEIVED: Sept. 29, 1969

DATE REPORTED: Nov. 5, 1969

SAMPLE IDENTIFICATION: P.T.O. L-5 Series

KIND OF SAMPLE: Soils

<u>LABORATORY NUMBER</u>	<u>SAMPLE IDENTIFICATION</u>	<u>COPPER P.P.M.</u>	<u>MOLYBDENUM P.P.M.</u>	<u>LEAD P.P.M.</u>
E69-11508-1	L 5 S-0	42.0	20.8	158.0
E69-11508-2	-5	30.6	< 0.5	5.6
E69-11508-3	-10	28.0	"	8.8
E69-11508-4	-15	22.0	"	9.6
E69-11508-5	-20	34.0	"	12.4
E69-11508-6	-25	226.0	24.8	13.2
E69-11508-7	-30	29.4	< 0.5	6.4
E69-11508-8	-35 Green Rock	49.0	"	28.4
E69-11508-9	-40 Soil	30.6	"	5.6
E69-11508-10	-40 Sludge	22.0	"	4.8
E69-11508-11	-45	24.0	"	4.0
E69-11508-12	-50	40.0	"	5.8
E69-11508-13	-55	20.6	"	4.0
E69-11508-14	-60	33.4	"	3.0
E69-11508-15	-65	122.0	"	3.6
E69-11508-16	-70	33.0	"	2.0

Continued .....

## CHEMICAL &amp; GEOLOGICAL LABORATORIES LIMITED

PAGE 2 .....

OPERATOR: MCGREGOR TELEPHONE & POWER CONSTRUCTION CO. REPORT NUMBER: E69-11508  
LTD.

DATE SAMPLED: ---

DATE RECEIVED: Sept. 29, 1969

DATE REPORTED: Nov. 5, 1969

SAMPLE IDENTIFICATION: P.T.O. L 5 Series

KIND OF SAMPLE: Soils

<u>LABORATORY NUMBER</u>	<u>SAMPLE IDENTIFICATION</u>	<u>COPPER P.P.M.</u>	<u>MOLYBDENUM P.P.M.</u>	<u>LEAD P.P.M.</u>
E69-11508-17	L 5 S-75	20.4	< 0.5	9.6
E69-11508-18	-80 Grey Rock	56.0	26.4	18.0
E69-11508-19	-85 Sludge (Black)	61.0	< 0.5	2.6
E69-11508-20	-85 Soil	26.0	< 0.5	4.0
E69-11508-21	-90	43.2	14.8	13.8
E69-11508-22	-95	27.0	< 0.5	11.2
E69-11508-23	-100	29.2	< 0.5	16.6
E69-11508-24	-105	42.0	< 0.5	7.4
E69-11508-25	-110	14.0	< 0.5	15.6
E69-11508-26	-115 Soil	67.6	18.4	31.0
E69-11508-27	-115 Grey Brown Rock	44.0	26.4	10.8
E69-11508-28	-115 Greenish Rock	92.4	22.0	20.6
E69-11508-29	-120 Soil	48.8	14.8	12.4

# CHEMICAL & GEOLOGICAL LABORATORIES LIMITED

OPERATOR: MCGREGOR TELEPHONE & POWER CONSTRUCTION CO. LTD. REPORT NUMBER: E69-11509

DATE SAMPLED: ---

DATE RECEIVED: Sept. 29, 1969

DATE REPORTED: Nov. 5, 1969

SAMPLE IDENTIFICATION: P.T.O. L 6 Series

KIND OF SAMPLE: Soils

<u>LABORATORY NUMBER</u>	<u>SAMPLE IDENTIFICATION</u>	<u>COPPER P.P.M.</u>	<u>MOLYBDENUM P.P.M.</u>	<u>LEAD P.P.M.</u>
E69-11509-1	L 6 S-40	60.4	10.0	2.0
E69-11509-2	-45 Greenish Red Rock	54.0	< 0.5	31.2
E69-11509-3	-45 Soil	68.0	14.8	3.4
E69-11509-4	-50 Black Speckled Rock	34.6	19.4	4.8
E69-11509-5	-50 Soil	21.6	13.2	3.0
E69-11509-6	-55	20.4	< 0.5	7.4
E69-11509-7	-60	32.4	< 0.5	8.8
E69-11509-8	-65	42.0	19.4	1380.0
E69-11509-9	-70	49.6	< 0.5	8.4
E69-11509-10	-75	39.6	< 0.5	2.0
E69-11509-11	-80	40.0	< 0.5	3.0
E69-11509-12	-85	55.6	< 0.5	6.4
E69-11509-13	-90	52.0	20.8	6.8
E69-11509-14	-95	12.4	< 0.5	4.8
E69-11509-15	-100	45.6	10.0	9.4

Continued .....

## CHEMICAL &amp; GEOLOGICAL LABORATORIES LIMITED

PAGE 2.....

OPERATOR: MCGREGOR TELEPHONE &amp; POWER CONSTRUCTION CO. REPORT NUMBER: E69-11509

LTD.

DATE SAMPLED: ---

DATE RECEIVED: Sept. 29, 1969

DATE REPORTED: Nov. 5, 1969

SAMPLE IDENTIFICATION: P.T.O. L 6 Series

KIND OF SAMPLE: Soils

<u>LABORATORY NUMBER</u>	<u>SAMPLE IDENTIFICATION</u>	<u>COPPER P.P.M.</u>	<u>MOLYBDENUM P.P.M.</u>	<u>LEAD P.P.M.</u>
E69-11509-16	L 6 S-105	9.4	< 0.5	2.0
E69-11509-17	-110	24.4	< 0.5	8.8
E69-11509-18	-115	45.0	< 0.5	7.4
E69-11509-19	-120	109.6	< 0.5	6.8

## CHEMICAL &amp; GEOLOGICAL LABORATORIES LIMITED

OPERATOR: MCGREGOR TELEPHONE & POWER CONSTRUCTION CO. REPORT NUMBER: E69-11510  
LTD.

DATE SAMPLED: ---

DATE RECEIVED: Sept. 29, 1969

DATE REPORTED: Nov. 6, 1969

SAMPLE IDENTIFICATION: P.T.O. L 7 Series

KIND OF SAMPLE: Soils

<u>LABORATORY NUMBER</u>	<u>SAMPLE IDENTIFICATION</u>	<u>COPPER P.P.M.</u>	<u>MOLYBDENUM P.P.M.</u>	<u>LEAD P.P.M.</u>
E69-11510-1	L 7 S-45	30.0	20.8	10.2
E69-11510-2	-50	54.2	<0.5	7.0
E69-11510-3	-55	34.0	"	4.0
E69-11510-4	-60	44.6	"	7.0
E69-11510-5	-65	54.2	"	6.2
E69-11510-6	-70	80.8	"	5.6
E69-11510-7	-75	64.6	"	3.0
E69-11510-8	-80	35.6	"	<1.0
E69-11510-9	-85	39.6	"	5.2
E69-11510-10	-90	38.0	"	2.0
E69-11510-11	-95	36.0	"	3.0
E69-11510-12	-100	40.0	"	<1.0
E69-11510-13	-105	58.4	"	9.2
E69-11510-14	-110	63.6	"	2.6
E69-11510-15	-115	56.4	10.5	6.0
E69-11510-16	-120	28.0	<0.5	<1.0

# CHEMICAL & GEOLOGICAL LABORATORIES LIMITED

OPERATOR: MCGREGOR TELEPHONE & POWER CONSTRUCTION CO. REPORT NUMBER: E69-11511  
LTD.

DATE SAMPLED: ---

DATE RECEIVED: Sept. 29, 1969

DATE REPORTED: Nov. 6, 1969

SAMPLE IDENTIFICATION: P.T.O. L 8 Series

KIND OF SAMPLE: Soils

<u>LABORATORY NUMBER</u>	<u>SAMPLE IDENTIFICATION</u>	<u>COPPER P.P.M.</u>	<u>MOLYBDENUM P.P.M.</u>	<u>LEAD P.P.M.</u>
E69-11511-1	L 8 S-0	21.2	<0.5	3.0
E69-11511-2	-5	38.8	"	3.6
E69-11511-3	-10 Rock	56.4	"	3.0
E69-11511-4	-10 Soil	66.4	"	2.4
E69-11511-5	-15	32.0	"	2.0
E69-11511-6	-20	23.6	"	4.0
E69-11511-7	-25	41.2	"	4.4
E69-11511-8	-30	32.4	"	5.0
E69-11511-9	-35	24.4	"	4.4
E69-11511-10	-40	58.6	"	5.6
E69-11511-11	-45	50.4	"	4.0
E69-11511-12	-50	35.4	"	3.2
E69-11511-13	-55	38.0	"	2.0
E69-11511-14	-60	44.4	"	3.6
E69-11511-15	-65	39.6	"	3.9
E69-11511-16	-70	51.0	"	5.8

Continued .....

CHEMICAL & GEOLOGICAL LABORATORIES LIMITED

PAGE 2 .....

OPERATOR: MCGREGOR TELEPHONE & POWER CONSTRUCTION CO. REPORT NUMBER: E69-11511  
LTD.

DATE SAMPLED: --- DATE RECEIVED: Sept. 29, 1969 DATE REPORTED: Nov. 6, 1969

SAMPLE IDENTIFICATION: P.T.O. L 8 Series

KIND OF SAMPLE: Soils

<u>LABORATORY NUMBER</u>	<u>SAMPLE IDENTIFICATION</u>	<u>COPPER P.P.M.</u>	<u>MOLYBDENUM P.P.M.</u>	<u>LEAD P.P.M.</u>
E69-11511-17	L 8 S-75	48.4	< 0.5	6.4
E69-11511-18	-80	48.8	"	5.6
E69-11511-19	-85	36.0	"	21.2
E69-11511-20	-90	16.0	"	8.4
E69-11511-21	-95	27.2	"	3.6
E69-11511-22	-100	58.0	"	5.0
E69-11511-23	-105	27.2	"	6.4
E69-11511-24	-110	54.8	"	< 1.0
E69-11511-25	-115	22.4	"	4.4
E69-11511-26	-120	40.6	"	2.4

# CHEMICAL & GEOLOGICAL LABORATORIES LIMITED

OPERATOR: MCGREGOR TELEPHONE & POWER CONSTRUCTION CO. LTD. REPORT NUMBER: E69-11512

DATE SAMPLED: ---

DATE RECEIVED: Sept. 29, 1969

DATE REPORTED: Nov. 6, 1969

SAMPLE IDENTIFICATION: P.T.O. L 9 Series

KIND OF SAMPLE: Soils

<u>LABORATORY NUMBER</u>	<u>SAMPLE IDENTIFICATION</u>	<u>COPPER P.P.M.</u>	<u>MOLYBDENUM P.P.M.</u>	<u>LEAD P.P.M.</u>
E69-11512-1	L 9 S-0 Rock	52.0	< 0.5	1.8
E69-11512-2	-0 Soil	43.0	"	3.8
E69-11512-3	-5	37.2	"	6.8
E69-11512-4	-10	46.8	"	4.6
E69-11512-5	-15	26.0	"	2.4
E69-11512-6	-20	33.6	"	4.2
E69-11512-7	-25	38.0	"	6.6
E69-11512-8	-30	65.6	"	5.2
E69-11512-9	-35	43.4	"	9.6
E69-11512-10	-40	37.4	"	6.6
E69-11512-11	-45	40.0	"	3.8
E69-11512-12	-50	27.0	"	8.2
E69-11512-13	-55	29.0	"	5.2
E69-11512-14	-60	41.2	"	4.0
E69-11512-15	-65	40.4	"	4.6
E69-11512-16	-70	119.2	"	1.6

Continued .....

PAGE 2 .....

OPERATOR: MCGREGOR TELEPHONE & POWER CONSTRUCTION CO. REPORT NUMBER: E69-11512

LTD.

DATE SAMPLED: ---

DATE RECEIVED: Sept. 29, 1969

DATE REPORTED: Nov. 6, 1969

SAMPLE IDENTIFICATION: P.T.O. L-9 Series

KIND OF SAMPLE: Soils

<u>LABORATORY NUMBER</u>	<u>SAMPLE IDENTIFICATION</u>	<u>COPPER P.P.M.</u>	<u>MOLYBDENUM P.P.M.</u>	<u>LEAD P.P.M.</u>
E69-11512-17	L 9 S-75	50.0	< 0.5	2.4
E69-11512-18	-80	50.4	"	4.6
E69-11512-19	-85	43.6	"	5.6
E69-11512-20	-90	33.6	"	2.6
E69-11512-21	-95	68.8	"	4.2
E69-11512-22	-100	58.8	"	2.4
E69-11512-23	-105 Rock	212.0	"	4.6
E69-11512-24	-105 Soil	25.2	"	3.8
E69-11512-25	-110	22.0	"	21.6
E69-11512-26	-115	36.6	"	8.2
E69-11512-27	-120	27.2	"	5.2

## CHEMICAL &amp; GEOLOGICAL LABORATORIES LIMITED

OPERATOR: MCGREGOR TELEPHONE &amp; POWER CONSTRUCTION CO. LTD. REPORT NUMBER: E-11513

DATE SAMPLED: ----

DATE RECEIVED: Sept. 29, 1969

DATE REPORTED: Nov. 6, 1969

SAMPLE IDENTIFICATION: R 10 Series

KIND OF SAMPLE: Soils

<u>LABORATORY NUMBER</u>	<u>SAMPLE IDENTIFICATION</u>	<u>COPPER P.P.M.</u>	<u>MOLYBDENUM P.P.M.</u>	<u>LEAD P.P.M.</u>
E69-11513-1	R 10 S-5	24.0	<0.5	8.2
E69-11513-2	-10	30.4	"	4.6
E69-11513-3	-15	27.6	"	11.6
E69-11513-4	-20	31.4	"	6.0
E69-11513-5	-25	25.4	"	6.0
E69-11513-6	-30	27.2	"	8.2

## CHEMICAL &amp; GEOLOGICAL LABORATORIES LIMITED

OPERATOR: MCGREGOR TELEPHONE & POWER CONSTRUCTION CO. REPORT NUMBER: E69-11514  
LTD.

DATE SAMPLED: ---

DATE RECEIVED: Sept. 29, 1969

DATE REPORTED: Nov. 6, 1969

SAMPLE IDENTIFICATION: P.T.O. R 11 Series

KIND OF SAMPLE: Soils

<u>LABORATORY NUMBER</u>	<u>SAMPLE IDENTIFICATION</u>	<u>COPPER P.P.M.</u>	<u>MOLYBDENUM P.P.M.</u>	<u>LEAD P.P.M.</u>
E69-11514-1	R 11 S-0	35.8	< 0.5	2.4
E69-11514-2	-5	34.6	"	1.6
E69-11514-3	-10	41.6	"	6.6
E69-11514-4	-15	36.0	"	2.4
E69-11514-5	-20	34.6	"	6.0
E69-11514-6	-25	33.2	"	7.4
E69-11514-7	-30	33.6	"	2.4
E69-11514-8	-35	46.0	"	1.2
E69-11514-9	-40	46.4	"	2.0
E69-11514-10	-45	45.8	"	2.4
E69-11514-11	-50	41.6	"	1.4
E69-11514-12	-55	46.4	"	1.2
E69-11514-13	-60	55.0	"	5.2
E69-11514-14	-65	52.4	"	1.2
E69-11514-15	-70	49.0	"	1.6
E69-11514-16	-75	38.4	"	2.4

Continued .....

CHEMICAL & GEOLOGICAL LABORATORIES LIMITED

PAGE 2

OPERATOR: MCGREGOR TELEPHONE & POWER CONSTRUCTION CO. LTD. REPORT NUMBER: E69-11514

DATE SAMPLED: ---

DATE RECEIVED: Sept. 29, 1969

DATE REPORTED: Nov. 6, 1969

SAMPLE IDENTIFICATION: P.T.O R 11 Series

KIND OF SAMPLE: Soils

<u>LABORATORY NUMBER</u>	<u>SAMPLE IDENTIFICATION</u>	<u>COPPER P.P.M.</u>	<u>MOLYBDENUM P.P.M.</u>	<u>LEAD P.P.M.</u>
E69-11514-17	R 11 S-80	35.0	< 0.5	2.4
E69-11514-18	-85	40.0	"	5.0
E69-11514-19	-90	30.4	"	3.2
E69-11514-20	-95	30.2	"	1.6
E69-11514-21	-100	39.4	"	1.6

# SHEET 105C-13

LATITUDE 60°45' TO 61°00'  
LONGITUDE 133°30' TO 134°00'

## NOTICE

THIS MAP IS ISSUED AS A PRELIMINARY GUIDE FOR WHICH THE DEPARTMENT OF NORTHERN AFFAIRS AND NATIONAL RESOURCES WILL ACCEPT NO RESPONSIBILITY FOR ANY ERRORS, INACCURACIES OR OMISSIONS WHATSOEVER ON THE SHEET BEFORE ADEQUATE SURVEYS HAVE BEEN MADE.

CANADA  
DEPARTMENT OF NORTHERN AFFAIRS AND NATIONAL RESOURCES  
NORTHERN ADMINISTRATION AND LANDS BRANCH  
LANDS DIVISION

SCALE: 1/2 MILE TO 1 INCH

FT. 1900 0 1000 2000 3000 4000 5000 6000 7000 8000 9000 10000

ISSUED UNDER THE AUTHORITY OF THE MINISTER  
NORTHERN AFFAIRS AND NATIONAL RESOURCES

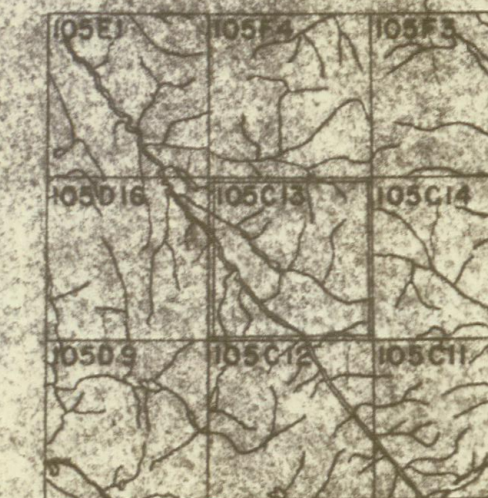
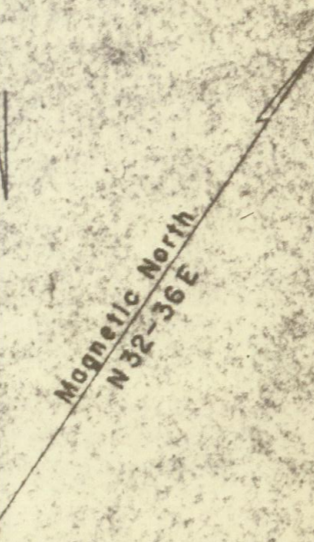
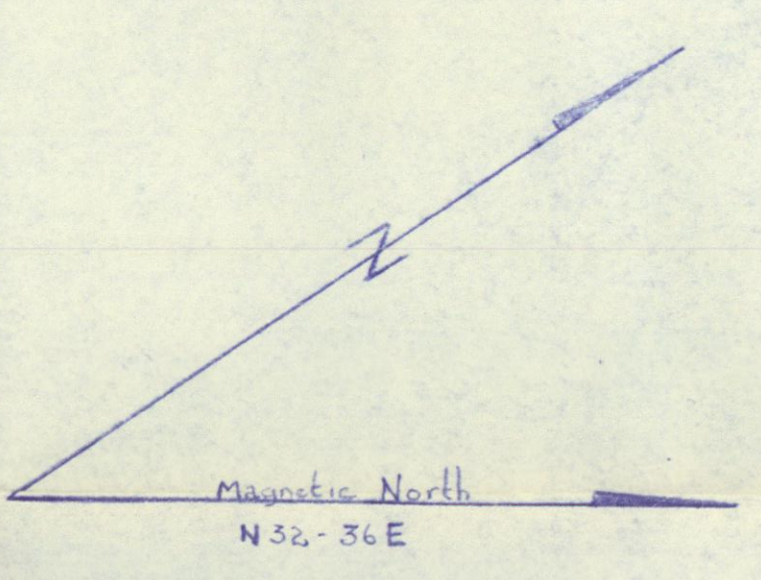
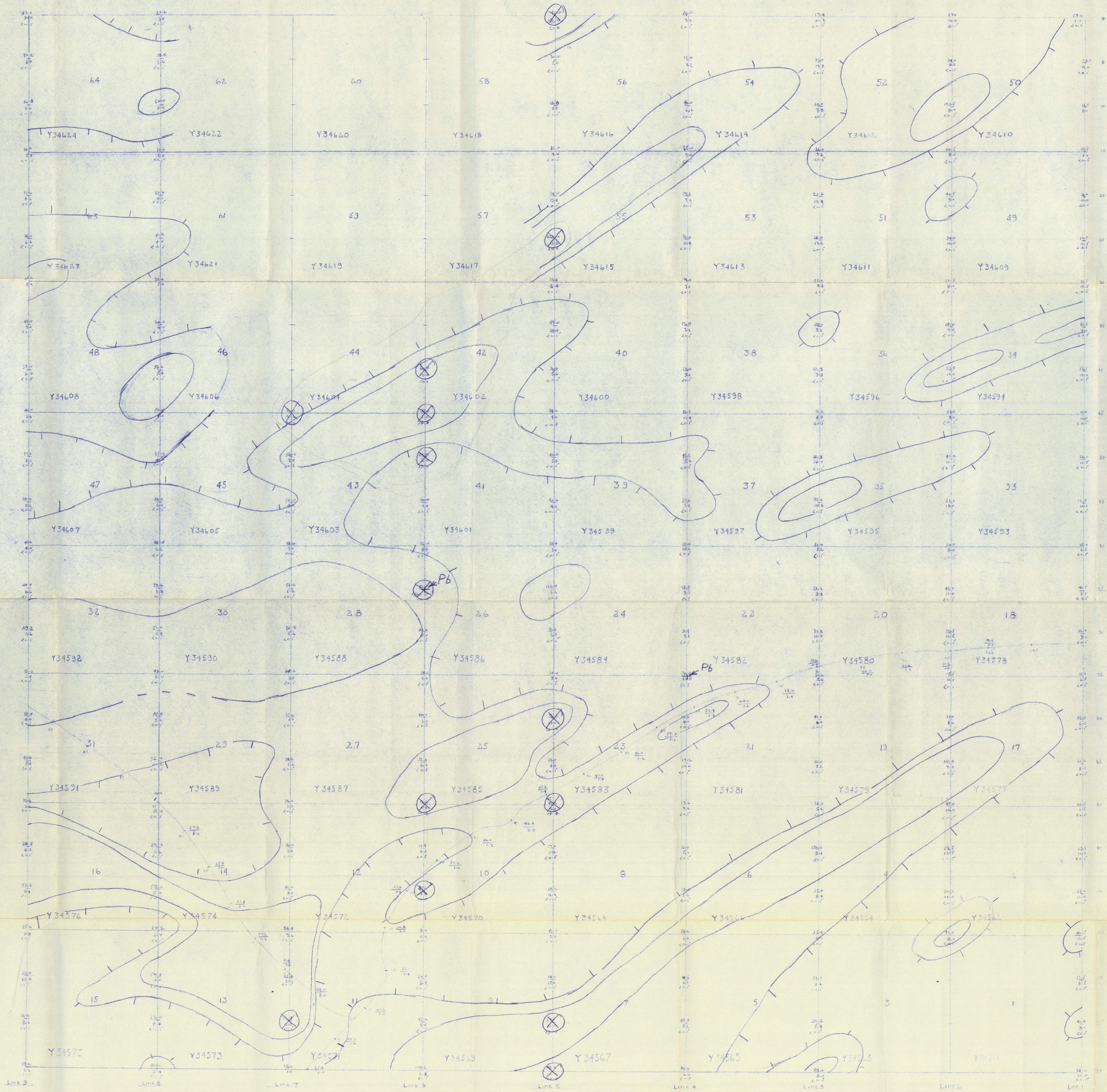


Figure 2

20 MAY 63  
15 MAY 63  
21 NOV 63 18 MAY 63  
20 OCT 63 12 MAY 63  
2 JUL 63 12 MAY 63  
29 MAY 63 22 APR 63





**LEGEND**

—	Claim
Y34581	Claim number
20.0	Copper in p.p.m.
100	Lead in p.p.m.
ppm	Molybdenum in p.p.m.
ppm	Parts per million
~	Crack
Line I	Claim boundary

Geochemical Ranges	Copper	Lead	Moly.
Background	0-30	0-35	0-0.5
Threshold	37-50	30-55	
Anomalous	50+	55+	0.5+

M<sup>c</sup>GREGOR TELEPHONE POWER CONST. CO.  
**MAC CLAIMS**  
 Geochemical Survey  
 YUKON TERRITORY  
 As shown on "Map Sheet" 105C-13  
 Scale 1" = 400' Nov 1963

Figure 3.