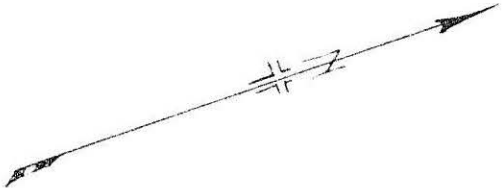


ASSESSMENT REPORTS

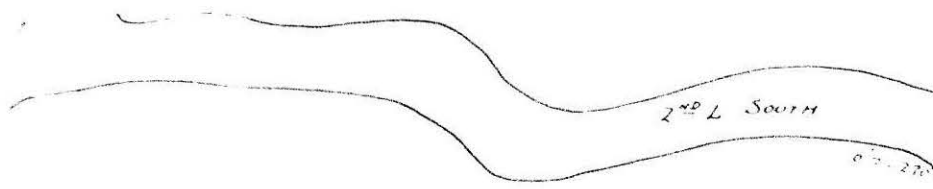
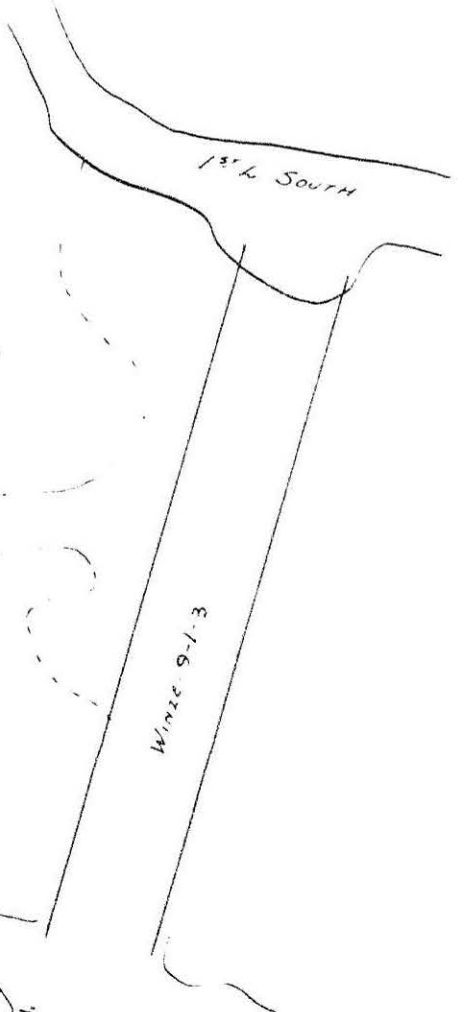
MAP No. 105M/14 **TYPE OF WORK:** Assay Plans & Topo Maps

REPORT FILED UNDER	Treadwell Yukon Co. Ltd.		
DATE PERFORMED		DATE FILED 1922 & 1924	
LOCATION -	LAT.	63° 55' N	Keno Hill Area, Y.T.
	LONG.	135° 18' W	
CLAIM Nos.	Sadie Friendship Group		
	Ladue Claims		
WORK DONE BY			
WORK DONE FOR			
REMARKS	Assay Sections Shafts 1, 2, 3		Ladue 1922
	Assay Plans 50 & 100 Levels		
	Plan 100 - Sadie - Friendship 1924		
	Topographic and Claim Maps - Keno Hill Area		

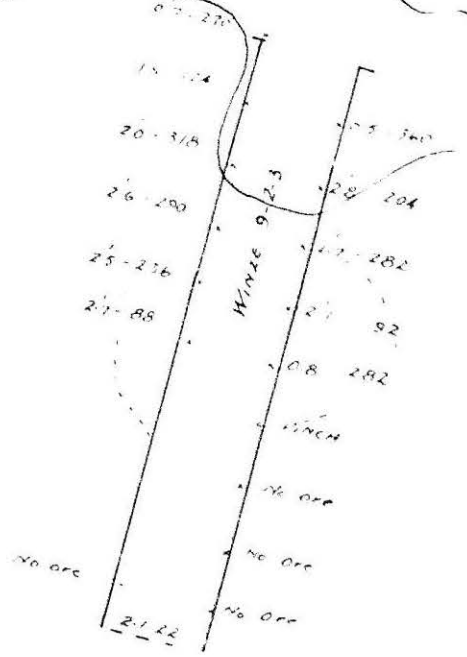


W. of Station	Zero	Station	Station	Int
24	55			48"
24	302			40
35	138	216.5		42
36	210			33"
37	133			41"
37	123			49"
37	64			49"
37	72			65"
37	7			69
48	182			67"
48	108			53"
48	24			42"
48	902			44"
50	25			51"
50	339			42"
50	16			44"
50	140			51"
50	282			42"
50	7			51"
50	14			50"
50	360	711.5		46"
50	78			59"
50	584			50"
55	13			55"
55	907			9"
55	22	1097		39"
55	15			63"
55	1683			39"
55	8			63"
55	19	224		39"
55	13	1724		42"
55	15			42"
55	588			42"
55	40	224		42"
55	51			42"
55	924			42"

INT 1+60 B LEVEL
Elev 5650'



K.H. LTD
RE-SAMPLING OF INT LEVEL 9-1+60 B
 JULY 12TH 1922
 SCALE - 1" = 10'
 0 5 10'



M. H. LTD. VEIN No 3.

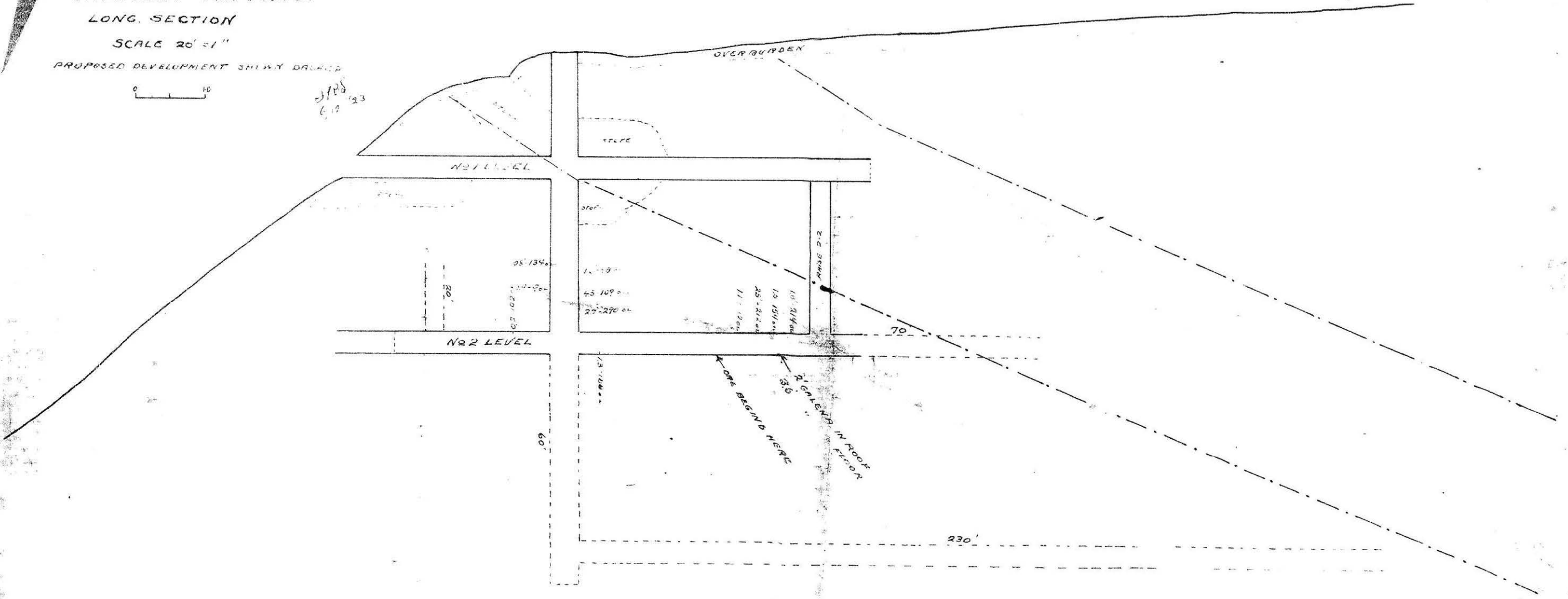
LONG SECTION

SCALE 20' = 1"

PROPOSED DEVELOPMENT SHOWN DASHED



5/18/23
6/12



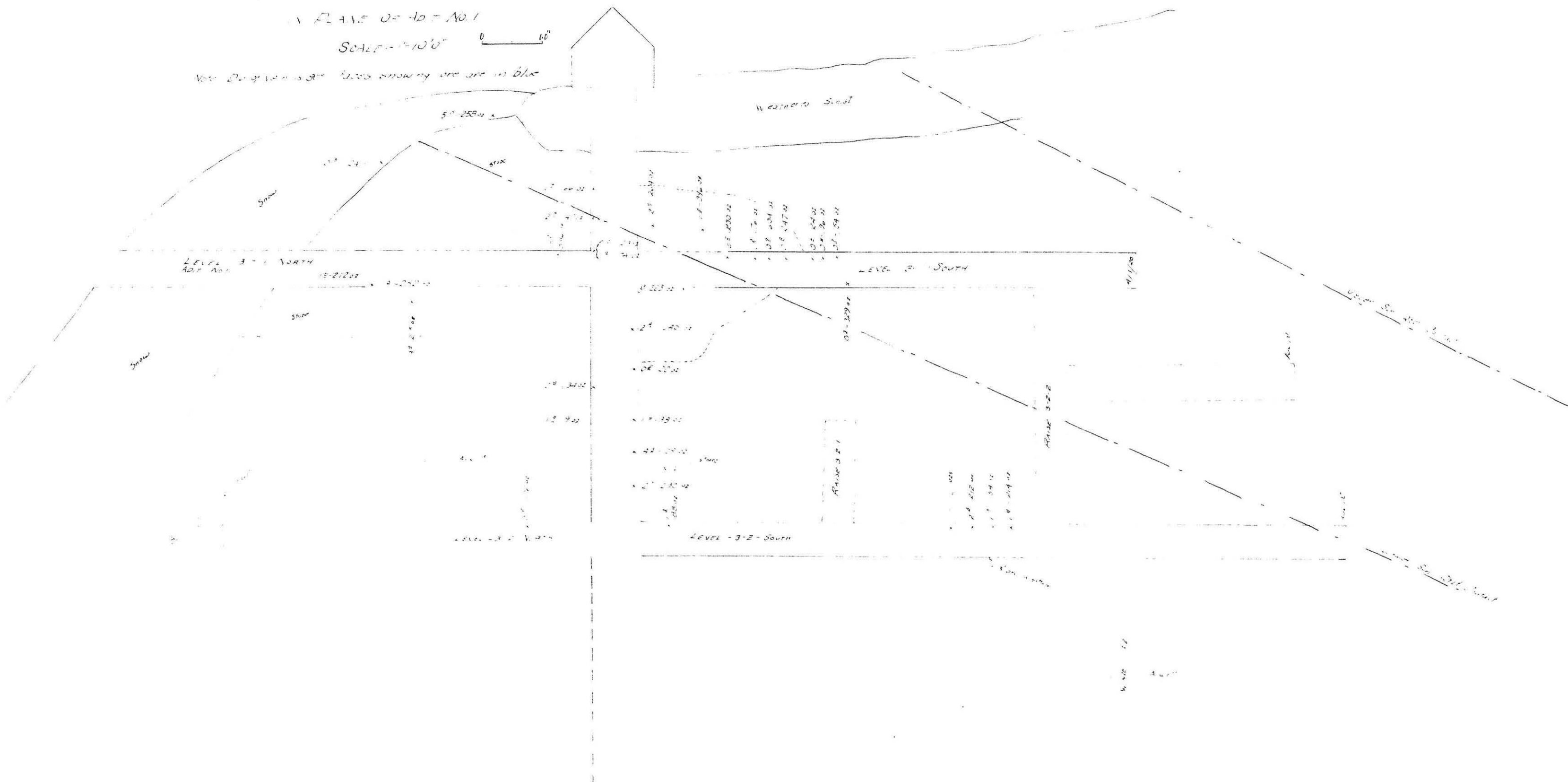
VERTICAL SECTION LINE NO 3

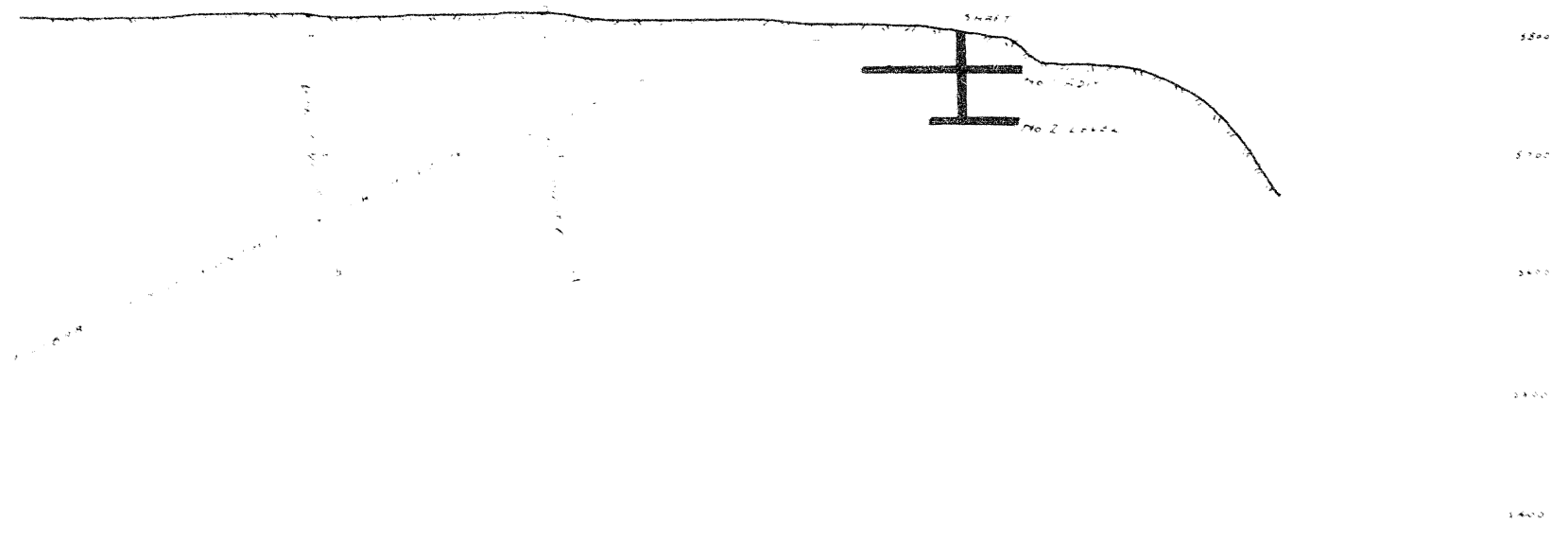
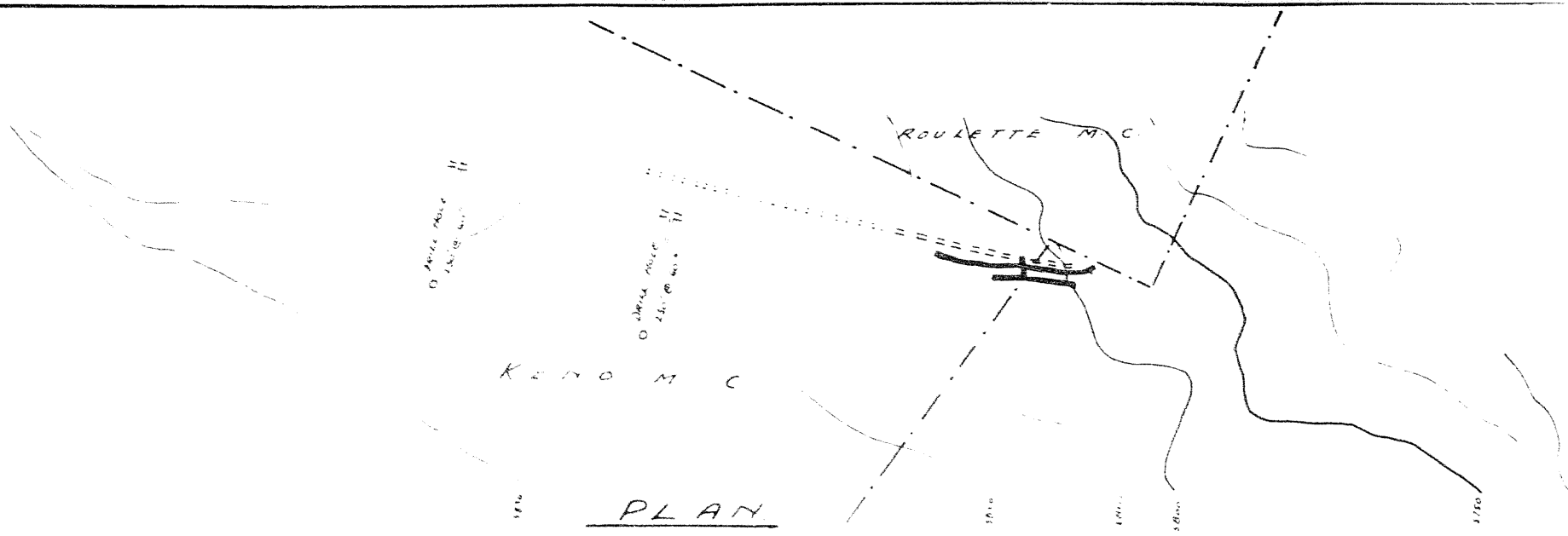
FL 11.5 OF 10 - NO. 1

SCALE = 1" = 10' 0"



NOTE: 20' 0" TO 25' 0" FLOOR SHOWING ARE NOT IN BLUE



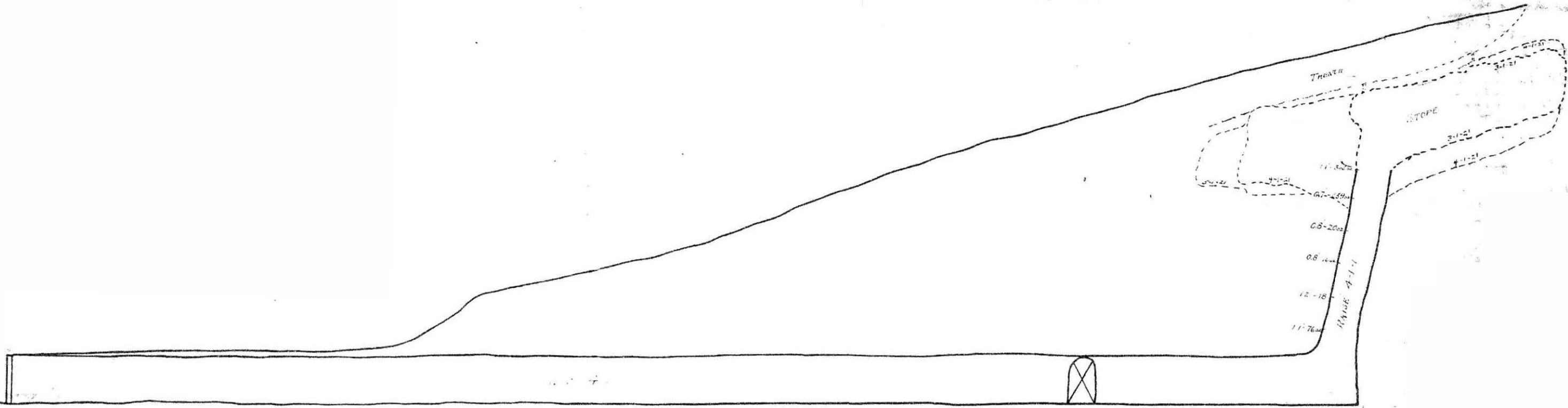


LONG. SECTION

NO 3 VEIN

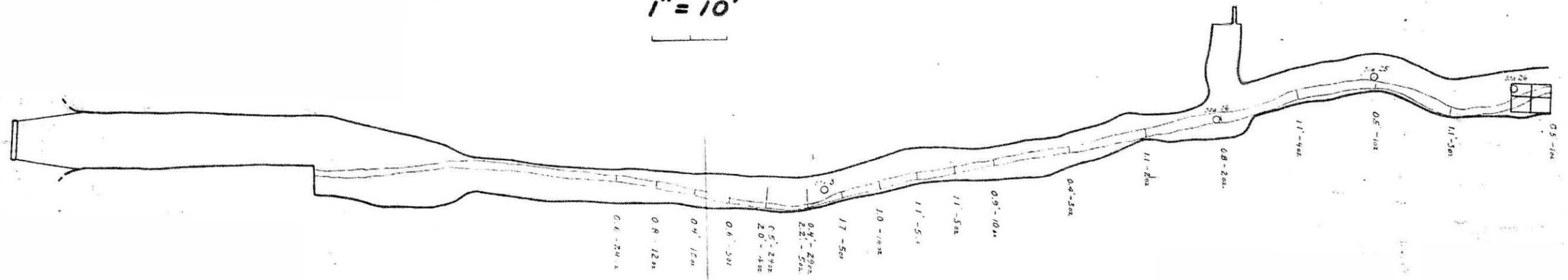
SCALE - 100' = 1"

SHOWING POSSIBLE DRILL HOLES



VEIN No 4

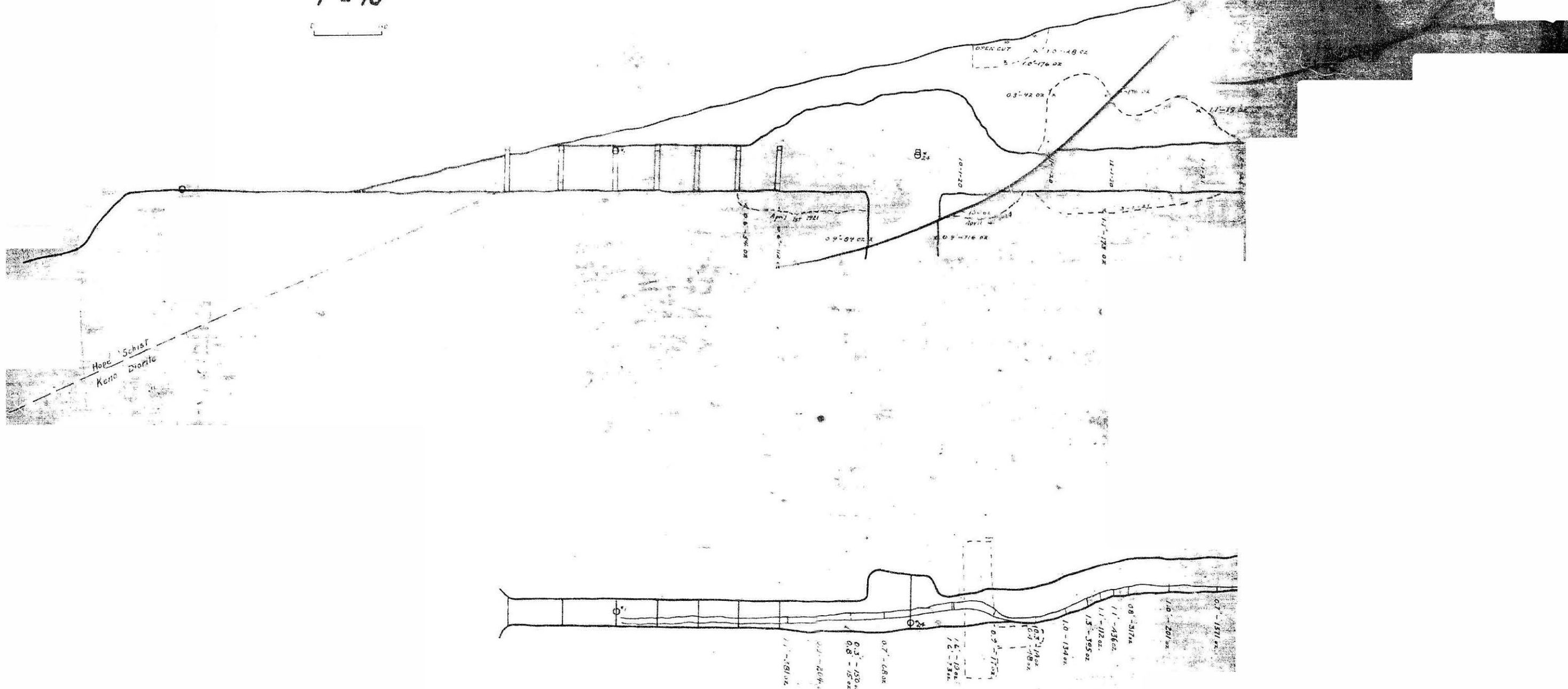
1" = 10'



MAGNETIC NORTH

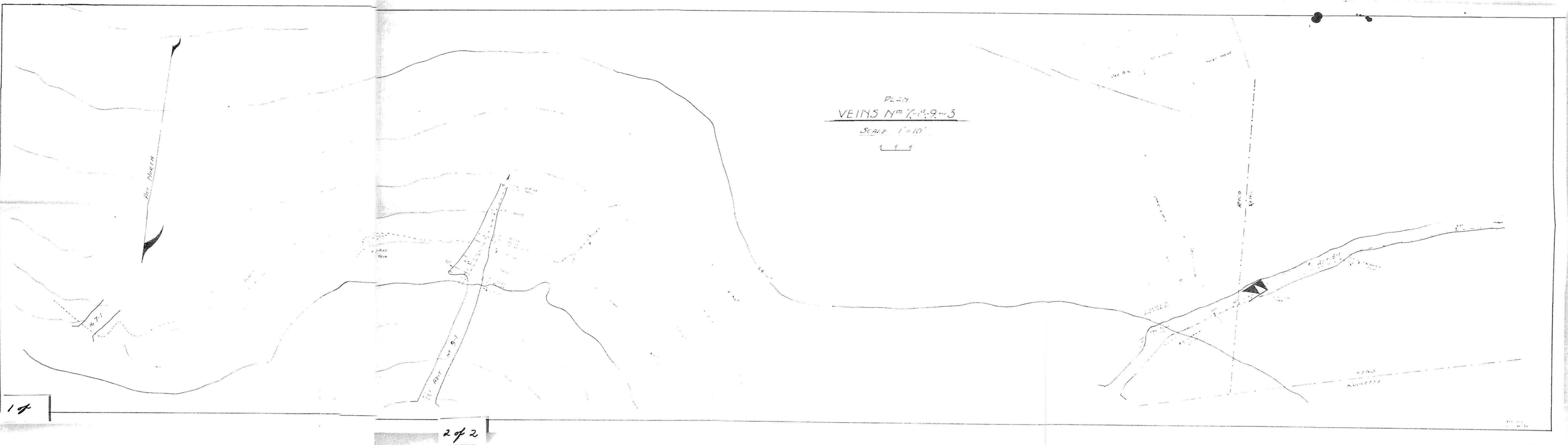
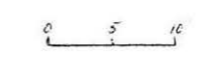
VEIN N^o 5-2

1" = 10'



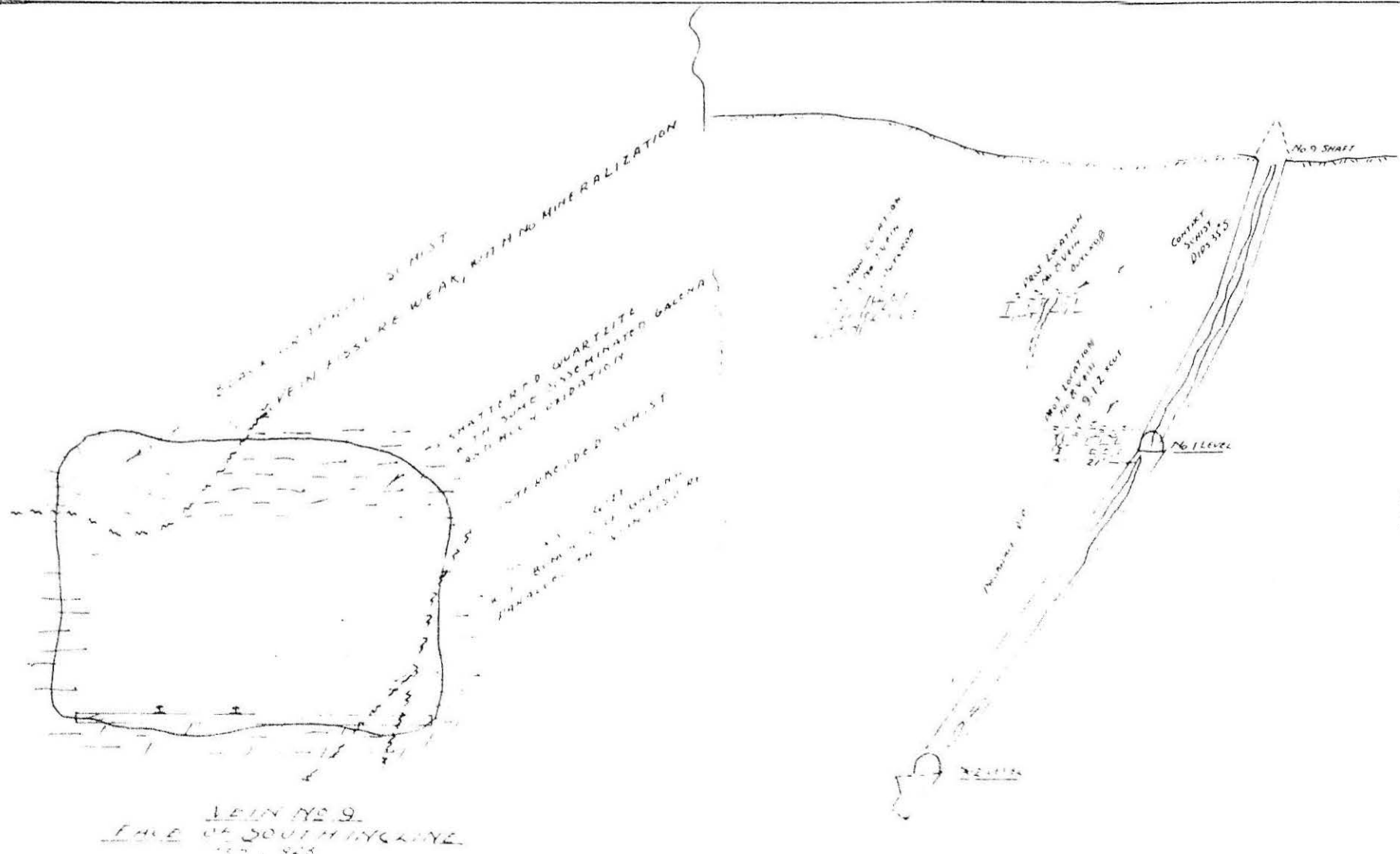
PLAN
VEINS NOS 7, 8, 9, 3

SCALE 1" = 10'



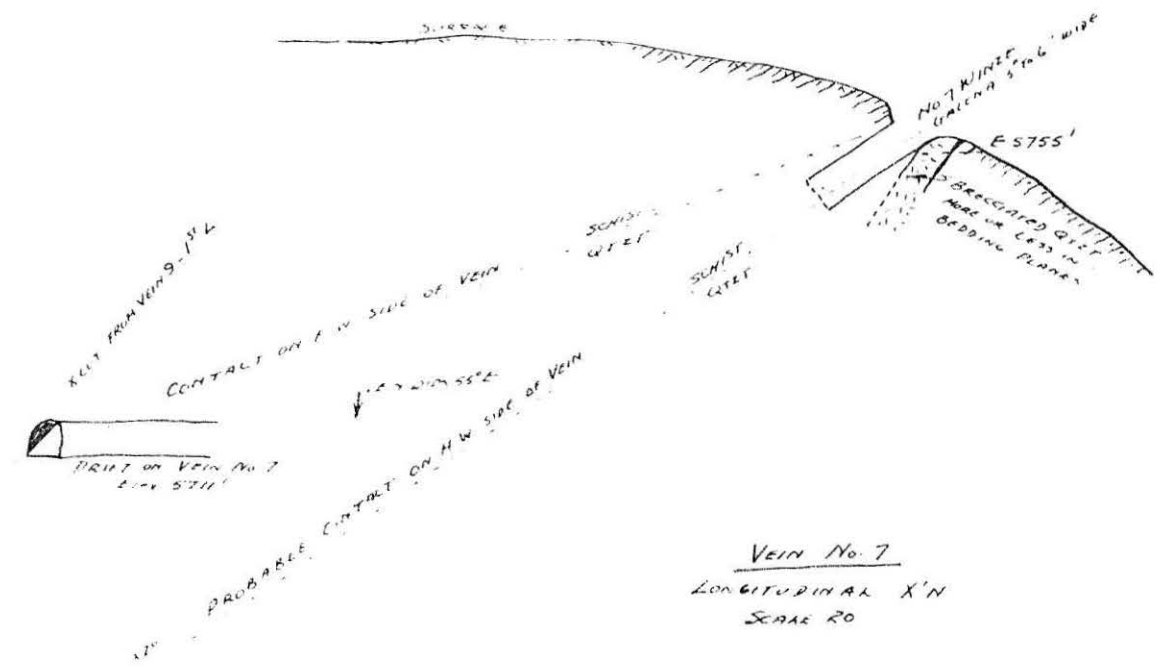
17

2 of 2



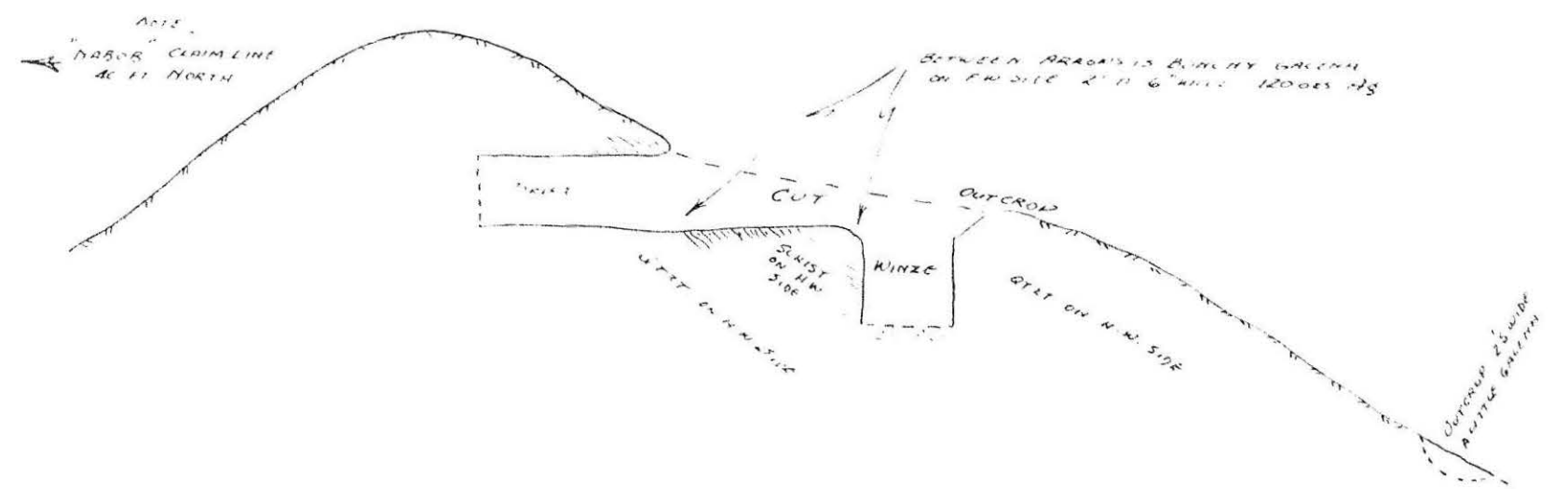
VEIN NO. 9
ELEV. OF SOUTH SIDE
1200 925

VERTICAL SECTION No. 9 VEIN
LOOKING SOUTH
SHOWING RELATION OF NO. 9 VEIN
SCALE 50' = 1"
0 15 30



VEIN NO. 7
LONGITUDINAL X'N
SCALE 20'

ELEV. OF VEIN NO. 13
SCALE 10' = 1"
0 5 10



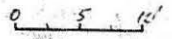
KENO HILL LTD.
VEIN SECTIONS Nos. 7, 8, 9, 13

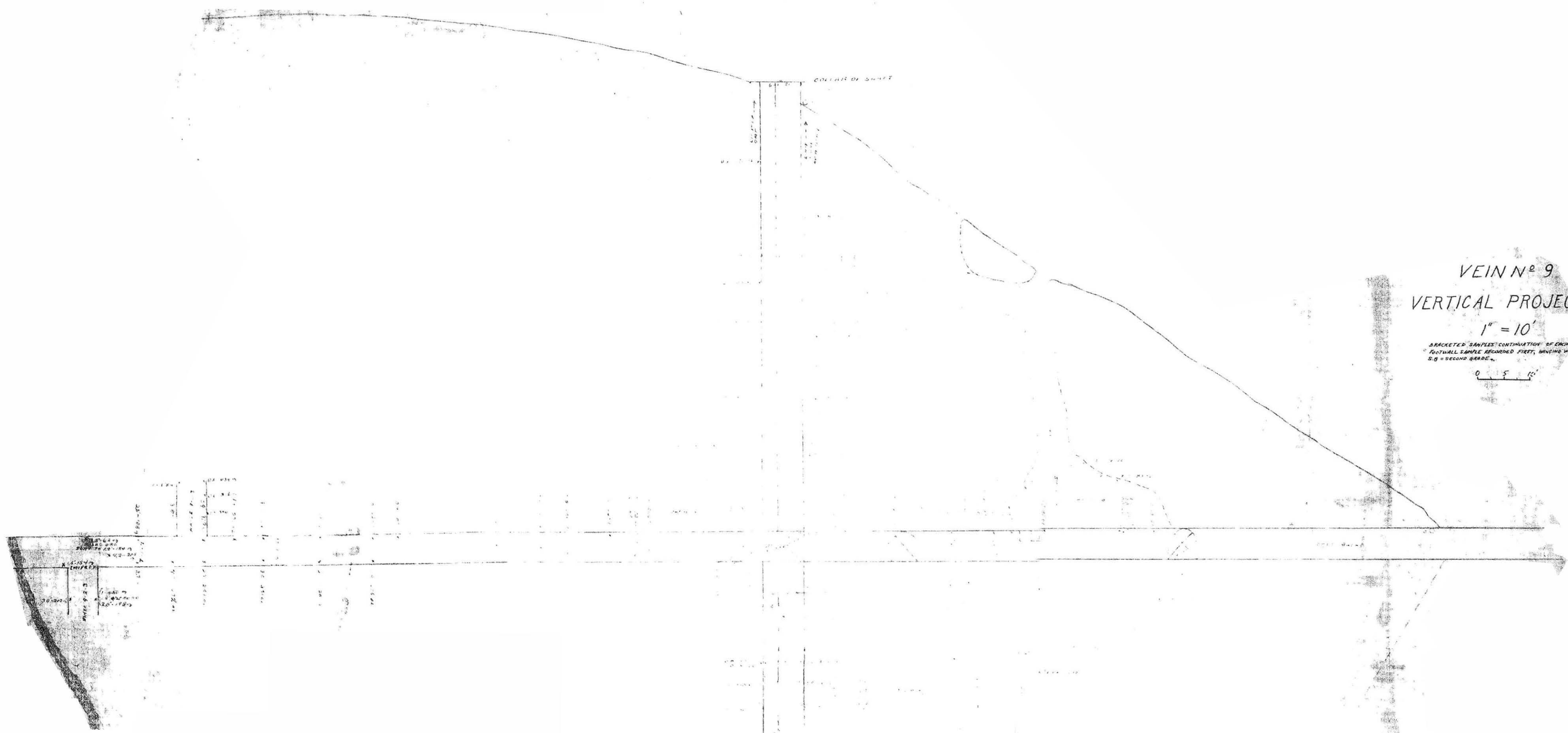
Scales: 1/4" = 50' 1/4" = 20'

VERTICAL PROJECTION

1" = 10'

BRACKETED SAMPLES CONTINUATION OF EACH OTHER.
FOOTWALL SAMPLE RECORDED FIRST, HANGING WALL SECOND.
S.G. = SECOND GRADE.

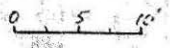




VEIN N^o 9
 VERTICAL PROJECTION

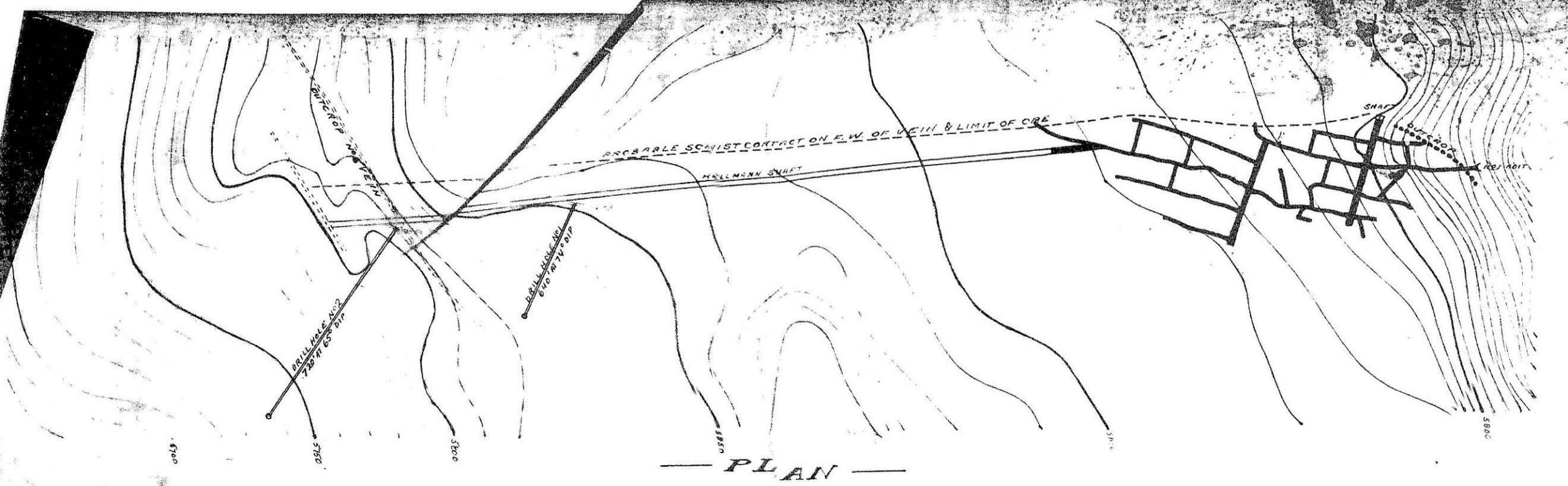
1" = 10'

BRACKETED SAMPLES CONTINUATION OF EACH OTHER
 FOOTWALL SAMPLE RECORDED FIRST, HANGING WALL SECOND,
 S.G. = SECOND GARDEN

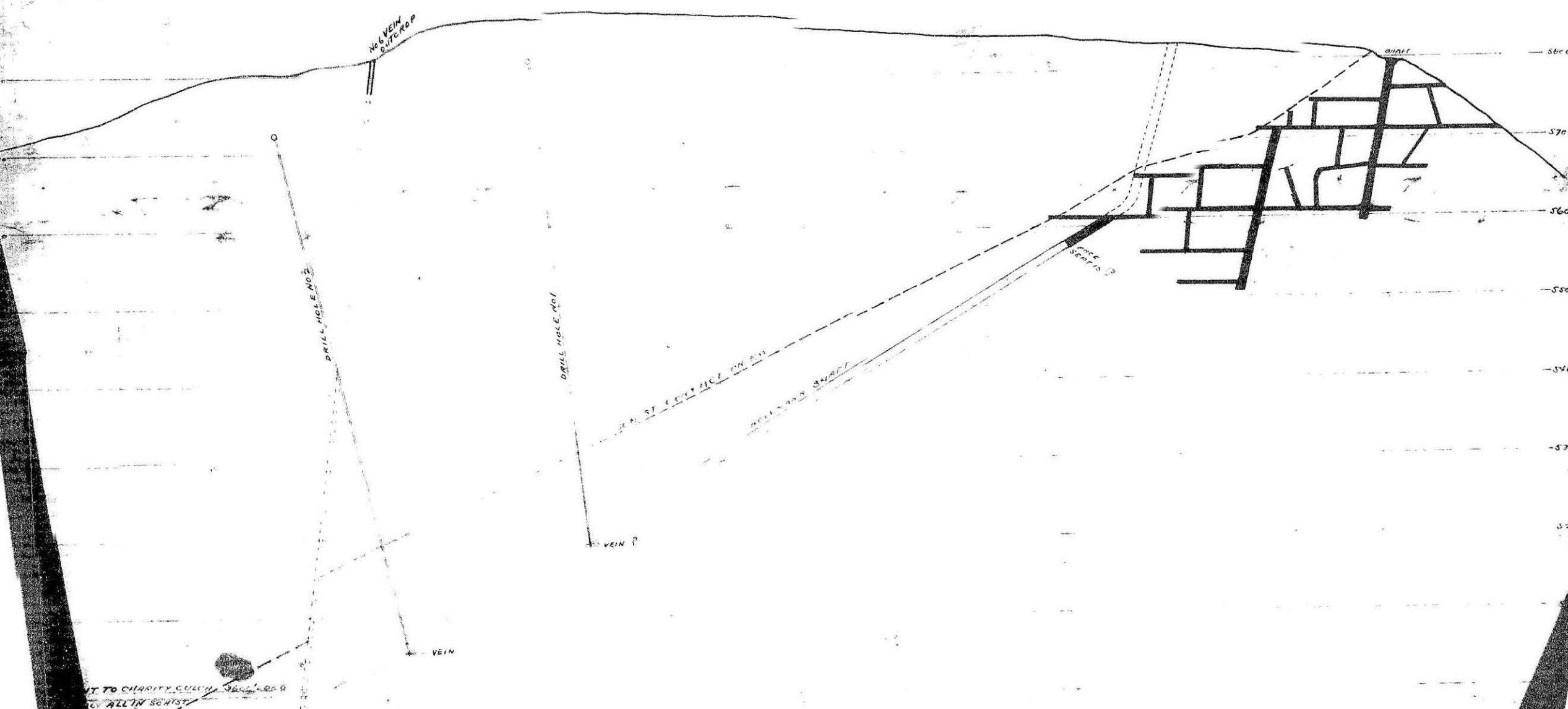


Sample No.	Depth (ft)	Remarks
1	10	...
2	20	...
3	30	...
4	40	...
5	50	...
6	60	...
7	70	...
8	80	...
9	90	...
10	100	...





— PLAN —



— LONG SECTION. —

PT. TO CHARITY CULCH. 300' - 200' G
ALL IN SCHIST

No. 9 VEIN.
SCALE 100' = 1"
SHOWING POSSIBLE DRILL

KENO

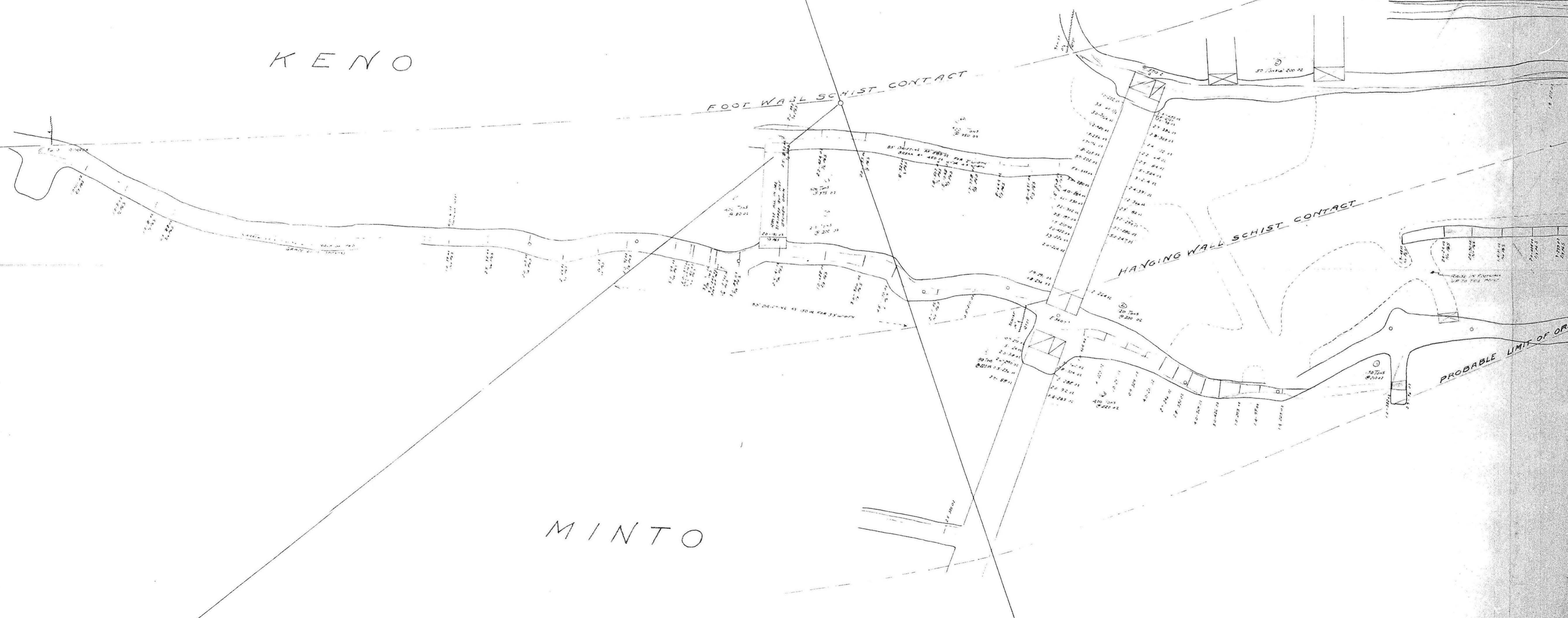
RICO

FOOT WALL SCHIST CONTACT

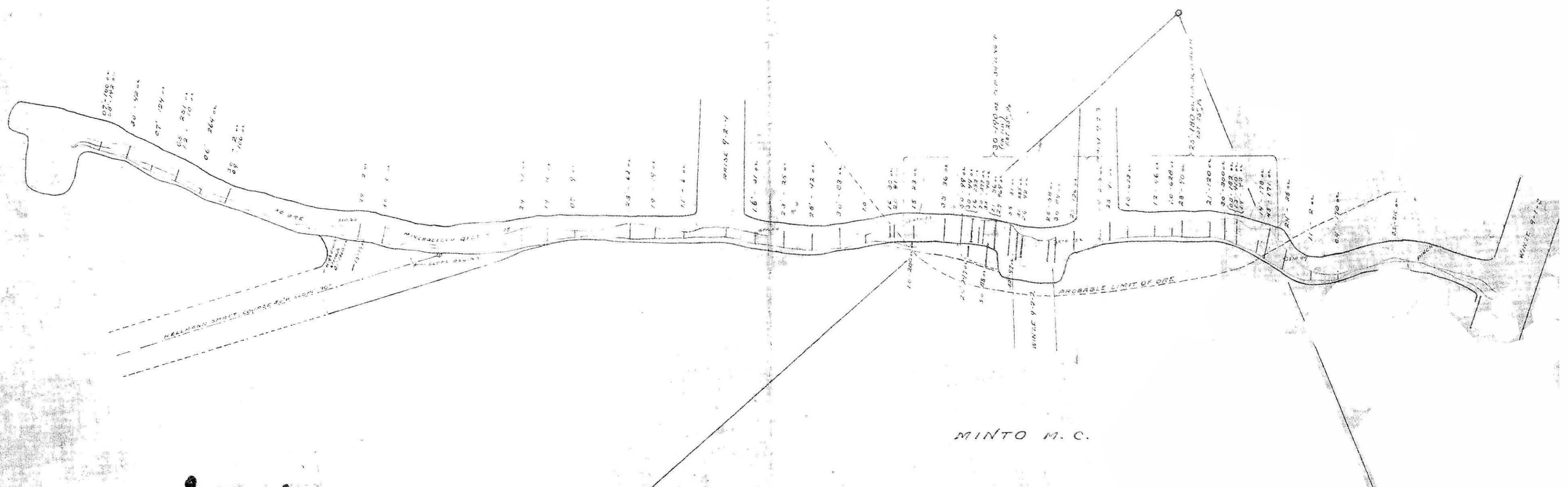
HANGING WALL SCHIST CONTACT

MINTO

PROBABLE LIMIT OF ORE



VEIN No 9
 PLAN SHOWING SAMPLING OF No 2 DRIFT SOUTH
 SCALE 100' = 1"





O
342 Tons
200 Oz.

P
50 Tons
180 Oz.

LEGEND
 The first area enclosed 1920-21
 River Int. Area enclosed 1921-22
 Sea Int. Ore left a reserve March 2, 1927

N
1 Ton
200 Oz.

K
37 Tons
220 Oz.

W
10 Tons
100 Oz.

J
15 Tons
150 Oz.

V
12 Tons
200 Oz.

X
10 Tons
100 Oz.

U
10 Tons
100 Oz.

S
10 Tons
100 Oz.

R
10 Tons
100 Oz.

Q
10 Tons
100 Oz.

T
10 Tons
100 Oz.

H
9.6 Tons
210 Oz.

B
5.4 Tons
160 Oz.

A
1.8 Tons
50 Oz.

C
1.2 Tons
30 Oz.

D
0.8 Tons
20 Oz.

E
0.6 Tons
15 Oz.

F
0.4 Tons
10 Oz.

G
0.3 Tons
8 Oz.

I
0.2 Tons
5 Oz.

L
0.1 Tons
2 Oz.

M
0.1 Tons
2 Oz.

N
0.1 Tons
2 Oz.

O
0.1 Tons
2 Oz.

P
0.1 Tons
2 Oz.

Q
0.1 Tons
2 Oz.

R
0.1 Tons
2 Oz.

S
0.1 Tons
2 Oz.

T
0.1 Tons
2 Oz.

U
0.1 Tons
2 Oz.

V
0.1 Tons
2 Oz.

W
0.1 Tons
2 Oz.

X
0.1 Tons
2 Oz.

Y
0.1 Tons
2 Oz.

Z
0.1 Tons
2 Oz.

AA
0.1 Tons
2 Oz.

AB
0.1 Tons
2 Oz.

AC
0.1 Tons
2 Oz.

AD
0.1 Tons
2 Oz.

AE
0.1 Tons
2 Oz.

AF
0.1 Tons
2 Oz.

AG
0.1 Tons
2 Oz.

AH
0.1 Tons
2 Oz.

AI
0.1 Tons
2 Oz.

AJ
0.1 Tons
2 Oz.

AK
0.1 Tons
2 Oz.

AL
0.1 Tons
2 Oz.

AM
0.1 Tons
2 Oz.

AN
0.1 Tons
2 Oz.

AO
0.1 Tons
2 Oz.

AP
0.1 Tons
2 Oz.

AQ
0.1 Tons
2 Oz.

AR
0.1 Tons
2 Oz.

AS
0.1 Tons
2 Oz.

AT
0.1 Tons
2 Oz.

AU
0.1 Tons
2 Oz.

AV
0.1 Tons
2 Oz.

AW
0.1 Tons
2 Oz.

AX
0.1 Tons
2 Oz.

AY
0.1 Tons
2 Oz.

AZ
0.1 Tons
2 Oz.

BA
0.1 Tons
2 Oz.

BB
0.1 Tons
2 Oz.

BC
0.1 Tons
2 Oz.

BD
0.1 Tons
2 Oz.

BE
0.1 Tons
2 Oz.

BF
0.1 Tons
2 Oz.

BG
0.1 Tons
2 Oz.

BH
0.1 Tons
2 Oz.

BI
0.1 Tons
2 Oz.

BJ
0.1 Tons
2 Oz.

BK
0.1 Tons
2 Oz.

BL
0.1 Tons
2 Oz.

BM
0.1 Tons
2 Oz.

BN
0.1 Tons
2 Oz.

BO
0.1 Tons
2 Oz.

BP
0.1 Tons
2 Oz.

BQ
0.1 Tons
2 Oz.

BR
0.1 Tons
2 Oz.

BS
0.1 Tons
2 Oz.

BT
0.1 Tons
2 Oz.

BU
0.1 Tons
2 Oz.

BV
0.1 Tons
2 Oz.

BW
0.1 Tons
2 Oz.

BX
0.1 Tons
2 Oz.

BY
0.1 Tons
2 Oz.

BZ
0.1 Tons
2 Oz.

CA
0.1 Tons
2 Oz.

CB
0.1 Tons
2 Oz.

CC
0.1 Tons
2 Oz.

CD
0.1 Tons
2 Oz.

CE
0.1 Tons
2 Oz.

CF
0.1 Tons
2 Oz.

CG
0.1 Tons
2 Oz.

CH
0.1 Tons
2 Oz.

CI
0.1 Tons
2 Oz.

CJ
0.1 Tons
2 Oz.

CK
0.1 Tons
2 Oz.

CL
0.1 Tons
2 Oz.

CM
0.1 Tons
2 Oz.

CN
0.1 Tons
2 Oz.

CO
0.1 Tons
2 Oz.

CP
0.1 Tons
2 Oz.

CQ
0.1 Tons
2 Oz.

CR
0.1 Tons
2 Oz.

CS
0.1 Tons
2 Oz.

CT
0.1 Tons
2 Oz.

CU
0.1 Tons
2 Oz.

CV
0.1 Tons
2 Oz.

CW
0.1 Tons
2 Oz.

CX
0.1 Tons
2 Oz.

CY
0.1 Tons
2 Oz.

CZ
0.1 Tons
2 Oz.

DA
0.1 Tons
2 Oz.

DB
0.1 Tons
2 Oz.

DC
0.1 Tons
2 Oz.

DD
0.1 Tons
2 Oz.

DE
0.1 Tons
2 Oz.

DF
0.1 Tons
2 Oz.

DG
0.1 Tons
2 Oz.

DH
0.1 Tons
2 Oz.

DI
0.1 Tons
2 Oz.

DJ
0.1 Tons
2 Oz.

DK
0.1 Tons
2 Oz.

DL
0.1 Tons
2 Oz.

DM
0.1 Tons
2 Oz.

DN
0.1 Tons
2 Oz.

DO
0.1 Tons
2 Oz.

DP
0.1 Tons
2 Oz.

DQ
0.1 Tons
2 Oz.

DR
0.1 Tons
2 Oz.

DS
0.1 Tons
2 Oz.

DT
0.1 Tons
2 Oz.

DU
0.1 Tons
2 Oz.

DV
0.1 Tons
2 Oz.

DW
0.1 Tons
2 Oz.

DX
0.1 Tons
2 Oz.

DY
0.1 Tons
2 Oz.

DZ
0.1 Tons
2 Oz.

EA
0.1 Tons
2 Oz.

EB
0.1 Tons
2 Oz.

EC
0.1 Tons
2 Oz.

ED
0.1 Tons
2 Oz.

EE
0.1 Tons
2 Oz.

EF
0.1 Tons
2 Oz.

EG
0.1 Tons
2 Oz.

EH
0.1 Tons
2 Oz.

EI
0.1 Tons
2 Oz.

EJ
0.1 Tons
2 Oz.

EK
0.1 Tons
2 Oz.

EL
0.1 Tons
2 Oz.

EM
0.1 Tons
2 Oz.

EN
0.1 Tons
2 Oz.

EO
0.1 Tons
2 Oz.

EP
0.1 Tons
2 Oz.

EQ
0.1 Tons
2 Oz.

ER
0.1 Tons
2 Oz.

ES
0.1 Tons
2 Oz.

ET
0.1 Tons
2 Oz.

EU
0.1 Tons
2 Oz.

EV
0.1 Tons
2 Oz.

EW
0.1 Tons
2 Oz.

EX
0.1 Tons
2 Oz.

EY
0.1 Tons
2 Oz.

EZ
0.1 Tons
2 Oz.

FA
0.1 Tons
2 Oz.

FB
0.1 Tons
2 Oz.

FC
0.1 Tons
2 Oz.

FD
0.1 Tons
2 Oz.

FE
0.1 Tons
2 Oz.

FF
0.1 Tons
2 Oz.

FG
0.1 Tons
2 Oz.

FH
0.1 Tons
2 Oz.

FI
0.1 Tons
2 Oz.

FJ
0.1 Tons
2 Oz.

FK
0.1 Tons
2 Oz.

FL
0.1 Tons
2 Oz.

FM
0.1 Tons
2 Oz.

FN
0.1 Tons
2 Oz.

FO
0.1 Tons
2 Oz.

FP
0.1 Tons
2 Oz.

FQ
0.1 Tons
2 Oz.

FR
0.1 Tons
2 Oz.

FS
0.1 Tons
2 Oz.

FT
0.1 Tons
2 Oz.

FU
0.1 Tons
2 Oz.

FV
0.1 Tons
2 Oz.

FW
0.1 Tons
2 Oz.

FX
0.1 Tons
2 Oz.

FY
0.1 Tons
2 Oz.

FZ
0.1 Tons
2 Oz.

GA
0.1 Tons
2 Oz.

GB
0.1 Tons
2 Oz.

GC
0.1 Tons
2 Oz.

GD
0.1 Tons
2 Oz.

GE
0.1 Tons
2 Oz.

GF
0.1 Tons
2 Oz.

GG
0.1 Tons
2 Oz.

GH
0.1 Tons
2 Oz.

GI
0.1 Tons
2 Oz.

GH
0.1 Tons
2 Oz.

GI
0.1 Tons
2 Oz.

GH
0.1 Tons
2 Oz.

GI
0.1 Tons
2 Oz.

GH
0.1 Tons
2 Oz.

GI
0.1 Tons
2 Oz.

GH
0.1 Tons
2 Oz.

GI
0.1 Tons
2 Oz.

GH
0.1 Tons
2 Oz.

GI
0.1 Tons
2 Oz.

GH
0.1 Tons
2 Oz.

GI
0.1 Tons
2 Oz.

GH
0.1 Tons
2 Oz.

GI
0.1 Tons
2 Oz.

GH
0.1 Tons
2 Oz.

GI
0.1 Tons
2 Oz.

GH
0.1 Tons
2 Oz.

