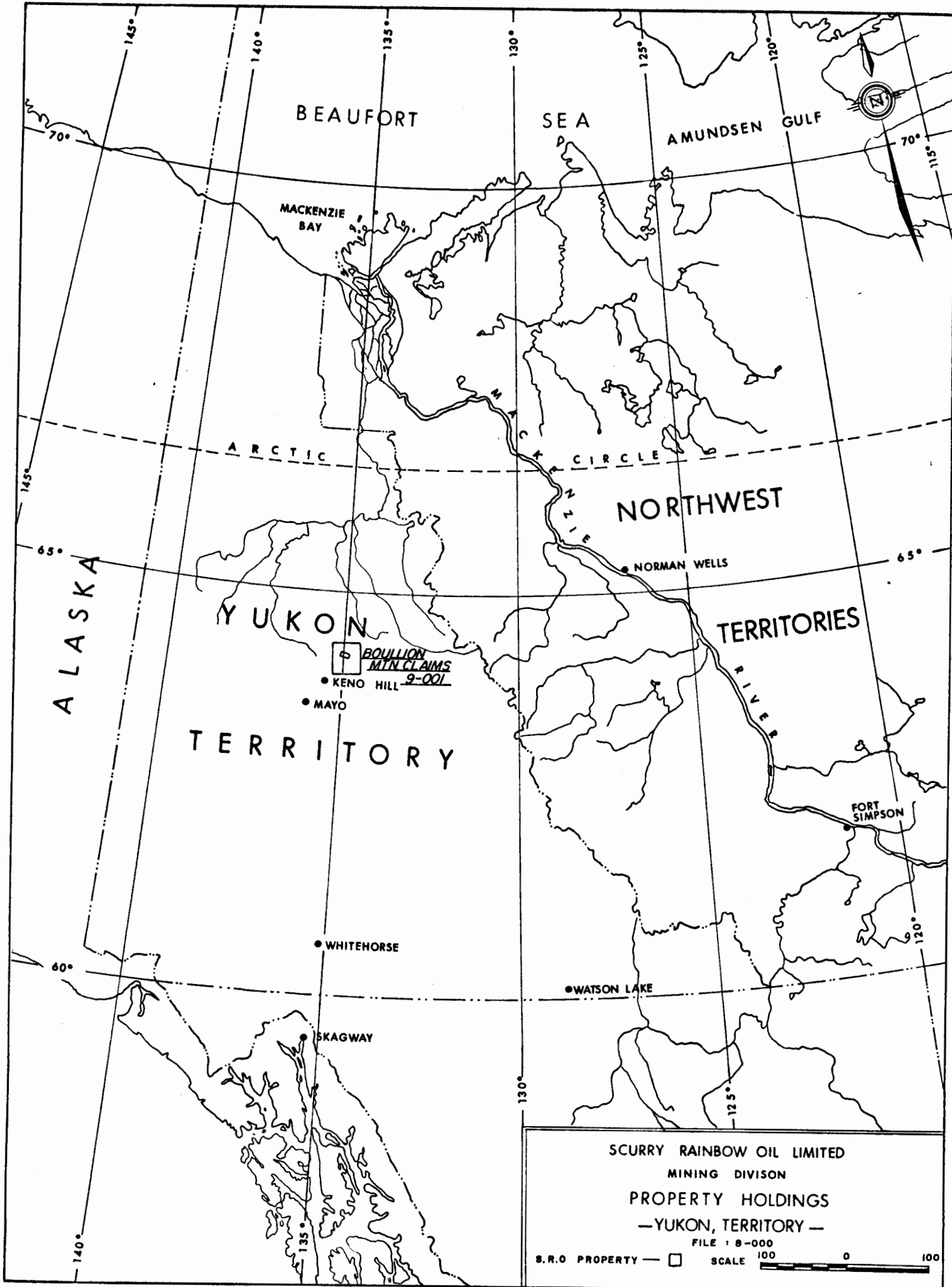


BULLION MOUNTAIN - APPENDIX "B"

Table of Contents

Volume 1

- General Area Map - Yukon Territory
- General Claim Map
- Agreement
- Geological & Claim Outline Map



BEAUFORT

SEA

AMUNDSEN GULF

MACKENZIE BAY

ARCTIC

CIRCLE

NORTHWEST

NORMAN WELLS

YUKON

TERRITORIES

BOULLION MTN CLAIMS

KENO HILL 9-001

MAYO

TERRITORY

FORT SIMPSON

WHITEHORSE

WATSON LAKE

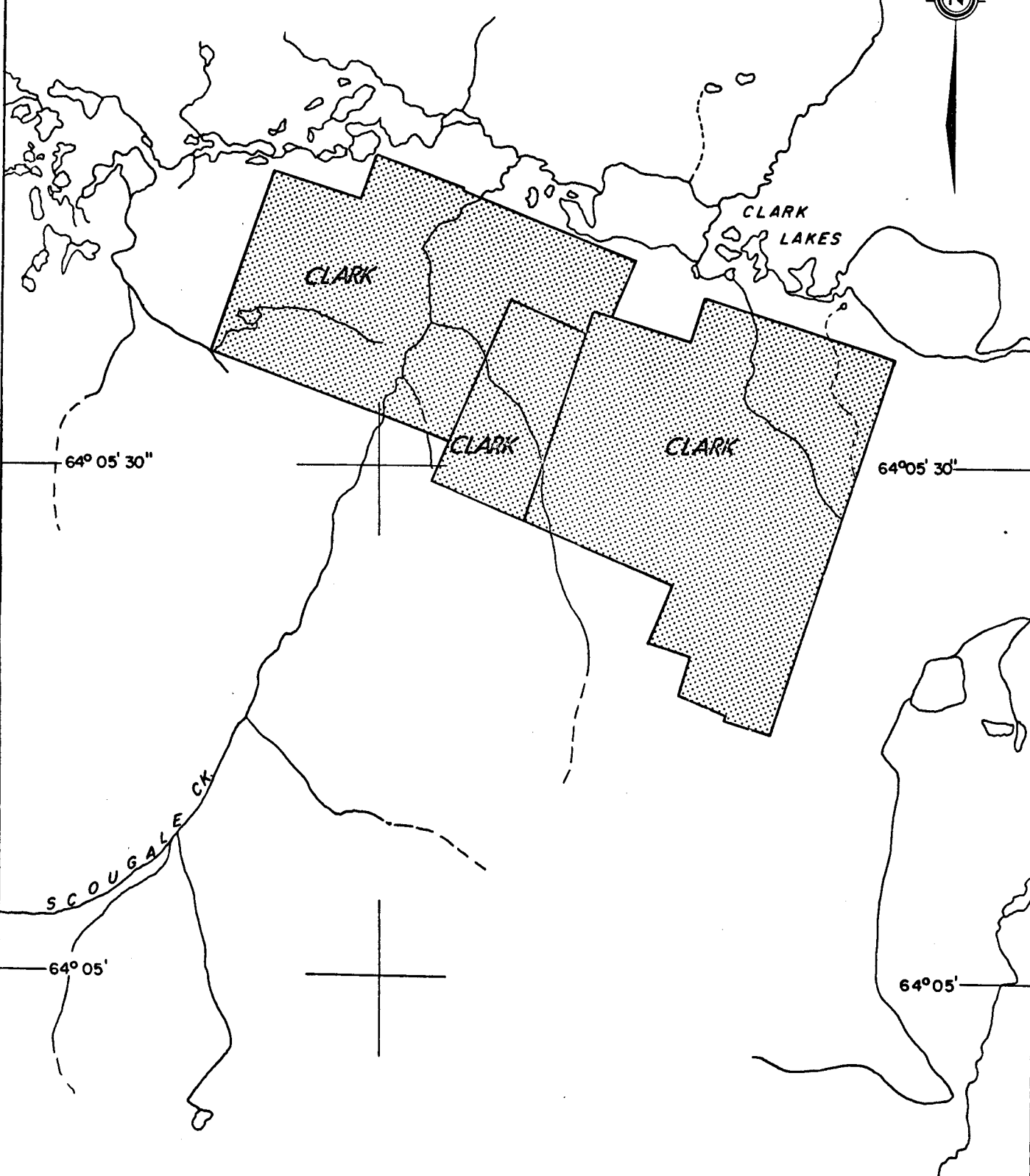
SKAGWAY

SCURRY RAINBOW OIL LIMITED  
MINING DIVISION  
PROPERTY HOLDINGS  
-YUKON, TERRITORY-

FILE 1 8-000

S.R.O PROPERTY — □ SCALE 100 0 100

CLAIM No.	ACRES	RECORDED	DUE	INTEREST
CLARK 1-4 Y6933-33	206.60			
5-38 Y26564-597	1756.10			
39-46 Y33455-462	413.20			
47-54 Y33463-470	413.20			
55-86 Y33513-546	1652.80			



**SCURRY - RAINBOW**  
**OIL LIMITED**  
 MINING DIVISION  
**BULLION MTN. MINING CLAIMS**  
**YUKON TERRITORY, CANADA**  
 File No.: 9-001  
 S.R.O. PROPERTY - 1/2 Mi. 1/2

13 5° 00'

BULLION MOUNTAIN MINING CO. LTD. (N.P.L.)

CLARK CLAIMS - YUKON TERRITORY

SUMMARY

The Clark claims cover a silver-lead-zinc replacement deposit in Lower Cambrian limestone in the Mayo District of the Yukon.

In 1971 diamond drilling over an area 200 by 300 feet showed good values and tonnages to a depth of 100 feet. Geological, geochemical and gravity surveys gave most encouraging results over a much larger area.

In 1972 extensive diamond drilling extended the original replacement to a depth of 500 feet over a length of 750 feet for widths up to 35 feet.

Three blocks are estimated to contain 477,000 tons averaging: 10.3 oz. silver, 7.95% lead and 4.45% zinc.

The drilling showed thicknesses of brecciated limestone of 600 feet and mapping has shown folded limestones in a mile by 3 mile area on the Scougale Creek to Rankin Creek area.

Detailed gravity and Induced Polarization surveys have indicated anomalous areas in both the limestone and quartzite. Geochemical work has indicated new anomalies.

### GEOLOGY

Mapping, in 1972, has shown the Cambrian or older limestones are folded in an overturned anticline striking easterly and dipping southward with synclinal structures in areas underlain by quartzite.

These folds were involved in overthrusts, rock flowage, brecciation and numerous northeast and northwest striking faults. The limestone is extensive and trenching and mapping have shown it at Rankin Creek and for 6 miles west of this Creek in the McQueston-Scougale valley.

The brecciated limestone is mineralized over large areas by pyrrhotite with minor sphalerite. North 20 to 30° east striking steeply dipping faults contain galena bearing quartz veins in the quartzite and irregular galena replacements in limestone on major and minor fold axes. Some similar replacements occur in the quartzite. A similar deposit occurs on the Paul Group on Scougale Creek.

WORK DONE

The irregular replacements are difficult to follow both on the surface where they are oxidized and covered by quartzite boulders and at depth where long holes are necessary to locate them.

In 1972 diamond drilling extended the original deposit along strike and down dip. There are, at present, 3 mineable blocks as follows:

1. Surface Pit Block

127,650 tons, 6.95<sup>oz.</sup> silver, 6.75% lead  
and 5.61% zinc.

2. Main Block

285,750 tons, 9.07 oz. silver, 6.88% lead  
and 3.59% zinc.

3. Top Block

63,750 tons: 22.9 oz. silver,  
15.30% lead and 6.24% zinc.

These total 477,000 tons averaging: 10.28 oz.  
silver, 7.97% lead and 4.45% zinc.

The down dip extension is open and the extensions east and west have not been located despite extensive drilling.

A detailed gravity survey was made in 1972 and this showed marked anomalies. Some diamond drilling was done to test three of these but no new replacements were found.

An Induced Polarization survey was made and this showed anomalies both in the limestone and quartzite areas. No testing has been done on these but drilling is being considered at present.

In 1971 widespread geochemical anomalies were found a mile west of the central ore body. Three diamond drill holes were drilled but they showed only oxidized material containing pyrite and sphalerite. They have not been sampled.

Further geochemical sampling has been done for over 3 miles to the west and anomalous lead and zinc values were found.

Detailed work is necessary to further outline these results.

Geochemical sampling has been done on the Ram and Cen claims, 8½ miles west of the centre pit, south of McQueston Lake.

Geological mapping, on a reconnaissance basis, was done. It was found that quartzite boulders mask the surface geology and limestone outcrops are scarce. Limestone does outcrop 2½ miles east of McQuesten Lake and solution cavities occur in the valley floor 2 miles east of the Lake.

Bulldozer trenching has exposed limestone on the Priority and Quest claims and the Geological Survey Of Canada, Memoir 357 by L.H. Green has mapped limestone on the Paul Group and on Ranken Creek southeast of the Central Area. This report also describes the Paul Group deposits which occur in limestone along a north 27° east striking fault. A Department of Energy, Mines and Resources, Mines Branch sample assayed: 40.48 oz. silver per ton, 40.9% lead and 10.75% zinc. This report confirms our thoughts that other deposits, similar to the Bullion deposits, occur throughout the Clark Lake area.

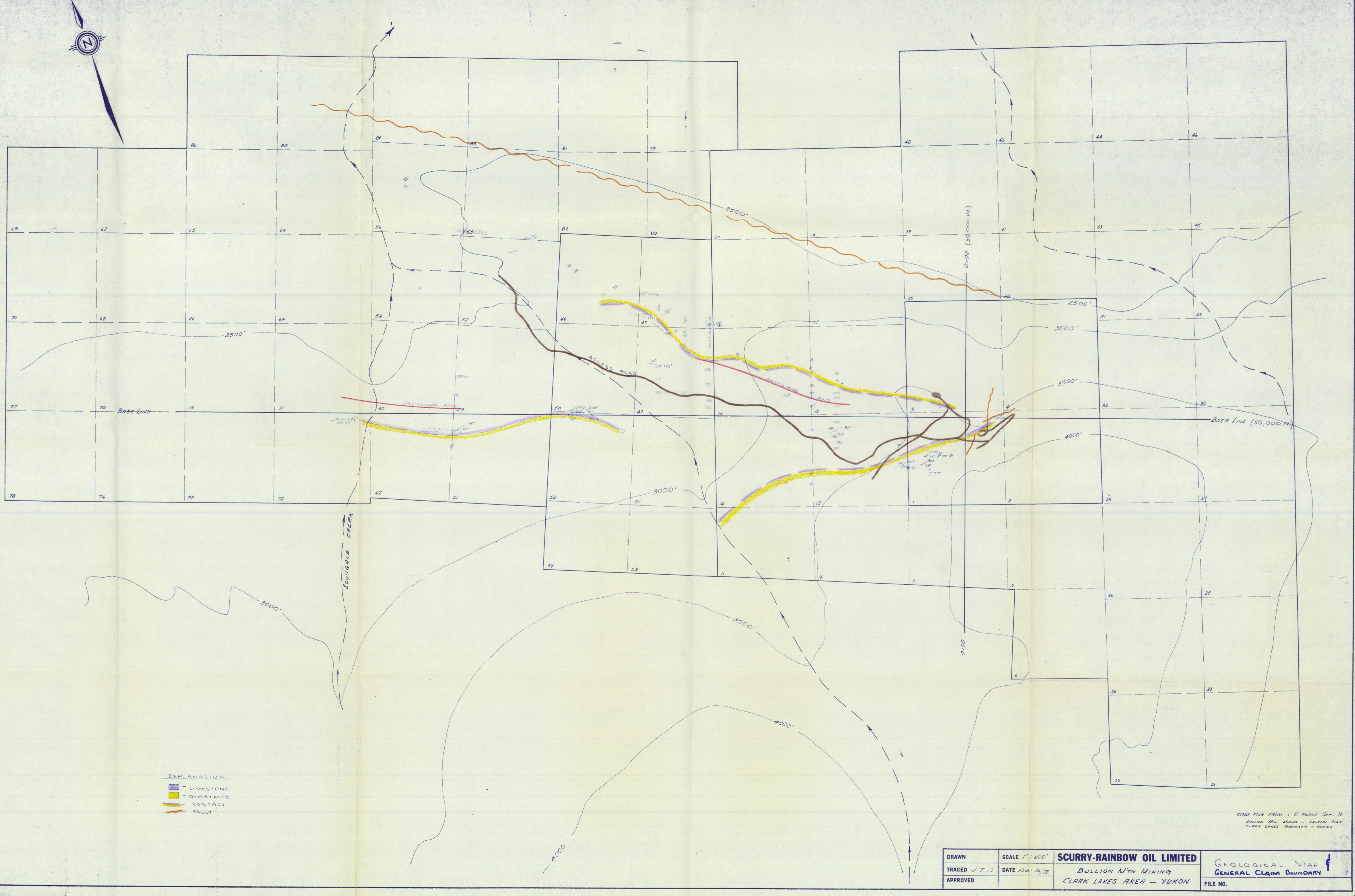
These deposits will be concealed beneath overburden or quartzite in folded limestones on north to northeast striking faults or as widespread disseminated pyrrhotite-sphalerite-galena deposits in limestone.

PROPOSED WORK

Diamond drilling will be continued to test Induced Polarization, gravity and geochemical anomalies and to test geological structures found in the continuing geological study.

An underground program involving a 1,000 foot crosscut along a north 30° east mineralized fault, through quartzite, to reach the explored bottom of the main deposit is being considered.

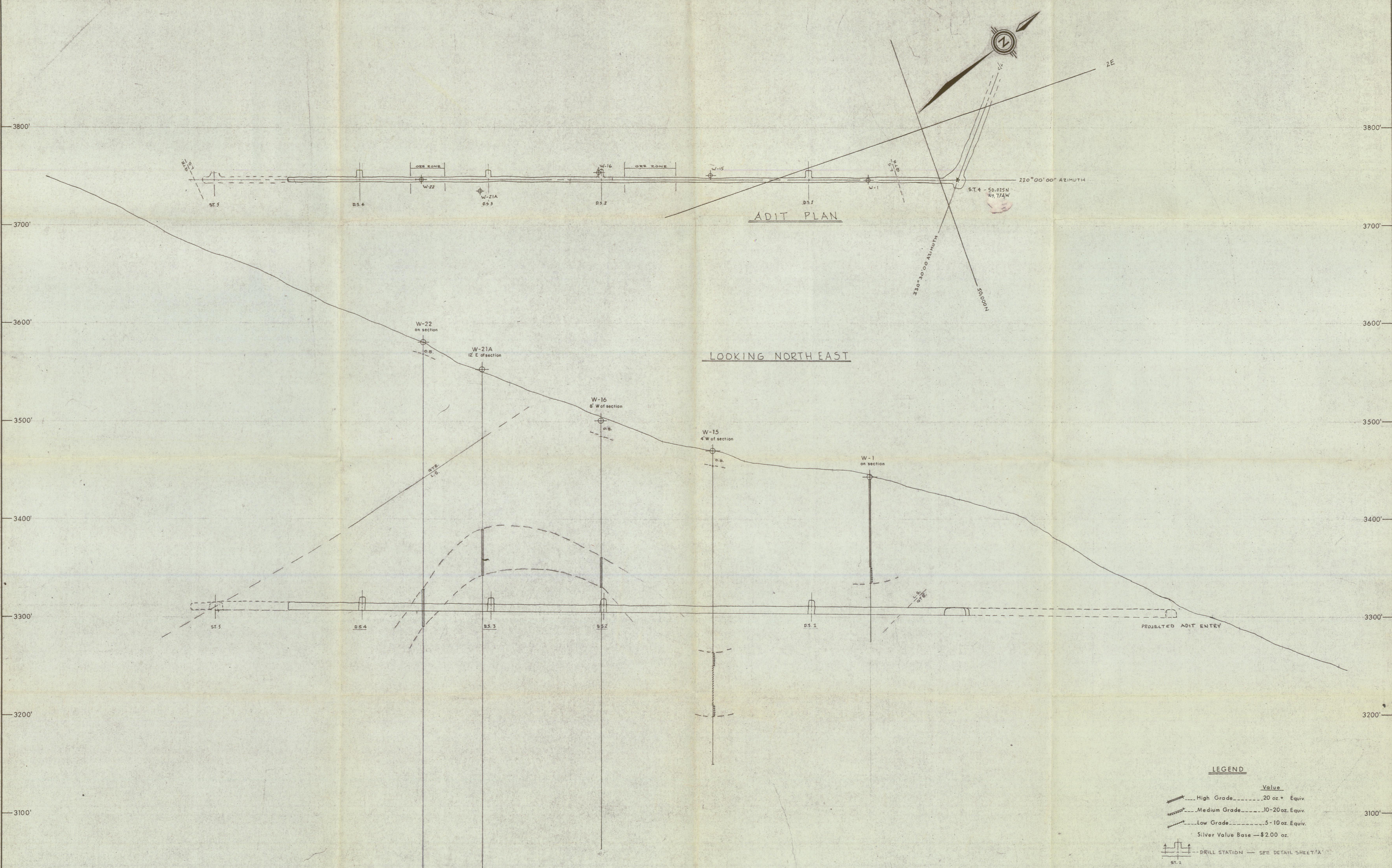
Vancouver, B.C.  
September 12, 1972



- EXPLANATION
- LIMESTONE
  - QUARTZITE
  - CONTACT
  - FAULT

CLAIM PLAN FROM I. G. PERCE SEPT. 70  
 BULLION N<sup>TH</sup> MINING - GENERAL PLAN  
 CLARK LAKES PROPERTY - YUKON

DRAWN	SCALE 1" = 600'	<b>SCURRY-RAINBOW OIL LIMITED</b> BULLION N <sup>TH</sup> MINING CLARK LAKES AREA - YUKON	GEOLOGICAL MAP GENERAL CLAIM BOUNDARY
TRACED J.T.D.	DATE Feb. 16/73		
APPROVED			

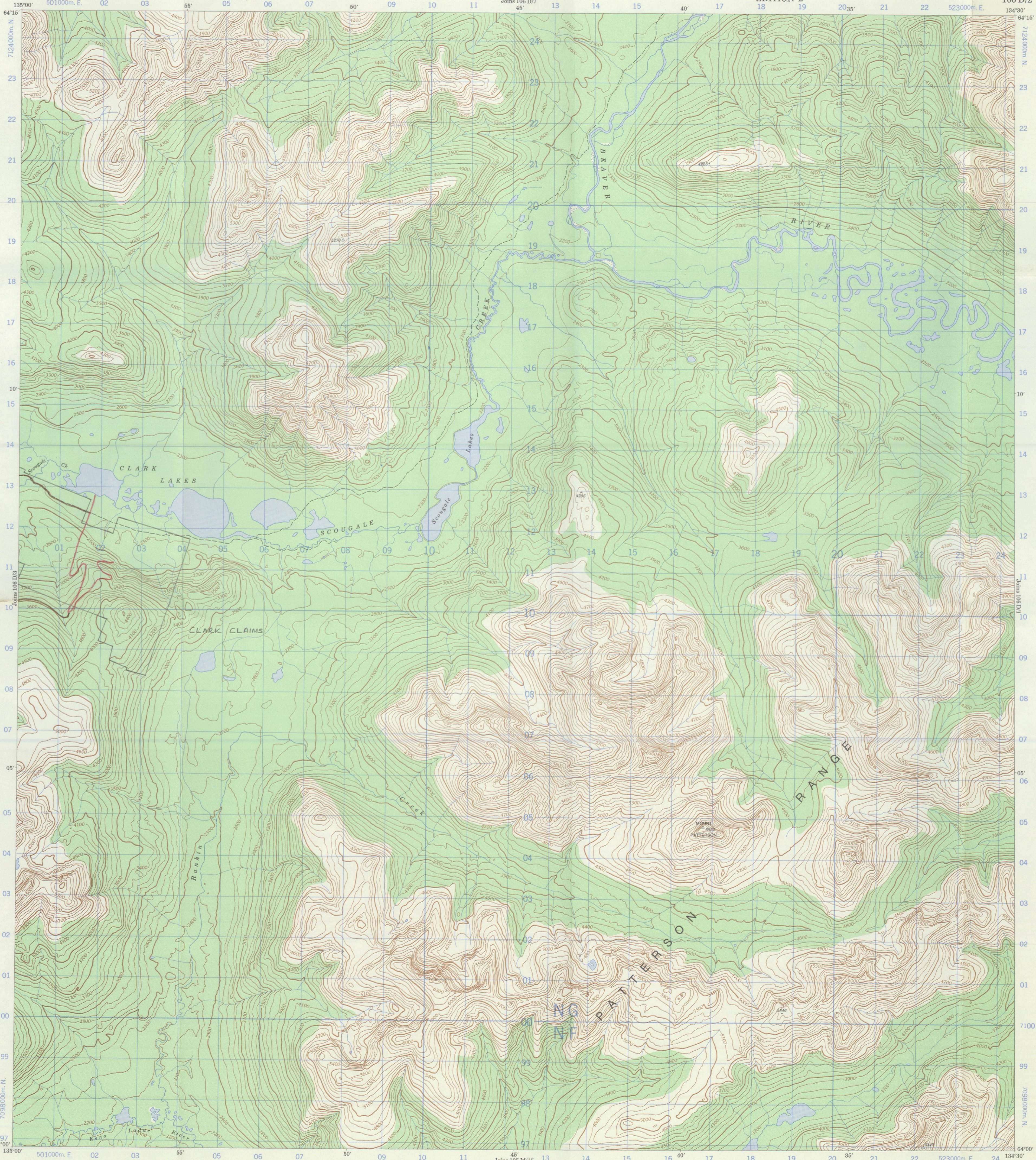


LOOKING NORTH EAST

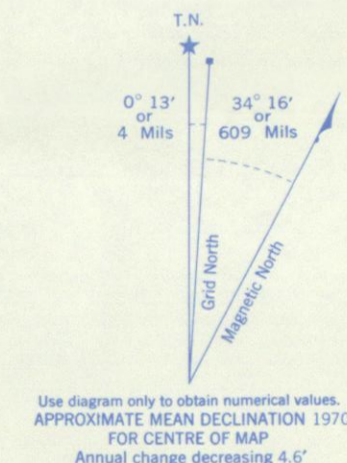
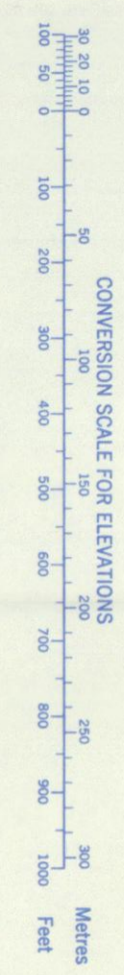
LEGEND

- |  | Value                                |
|--|--------------------------------------|
|  | High Grade.....20 oz. + Equiv.       |
|  | Medium Grade.....10-20 oz. Equiv.    |
|  | Low Grade.....5-10 oz. Equiv.        |
|  | Silver Value Base — \$2.00 oz.       |
|  | DRILL STATION — SEE DETAIL SHEET 'A' |

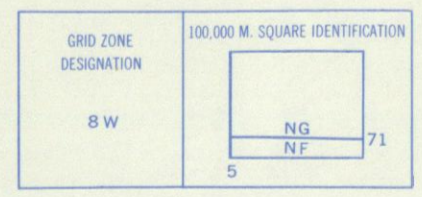
DRAWN R.M.	SCALE 1" = 40'	<b>SCURRY-RAINBOW OIL LIMITED</b>	SECTION ALONG PROPOSED ADIT
TRACED	DATE March '73	BULLION MTN. PROSPECT	
APPROVED		YUKON TERRITORY	FILE NO. 8.M. SHEET 1A



Refer to this map as: 106 D/2  
EDITION 2 MACE  
SERIES A 722



ONE THOUSAND METRE  
UNIVERSAL TRANSVERSE MERCATOR GRID  
ZONE 8



EXAMPLE OF METHOD USED TO GIVE A REFERENCE TO NEAREST 100 METRES

THE FOLLOWING GRID REFERENCE IS A SIMPLE ONE AND DOES NOT REFER TO A POINT ON THE MAP

99				
98				
97				
	95	96	97	98

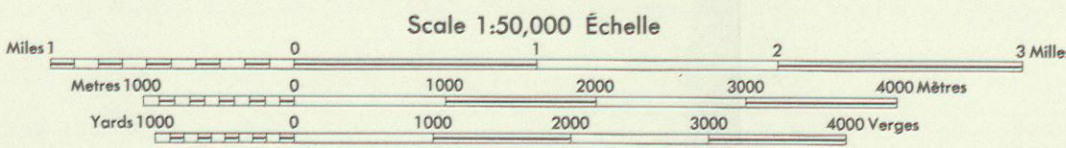
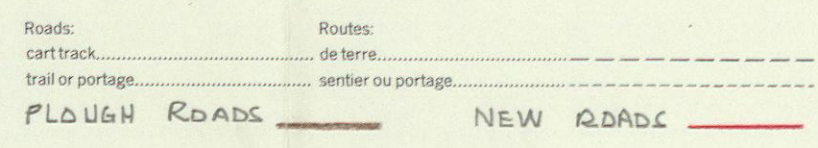
REFERENCE POINT CHURCH (as above)

EASTING	Read number on grid line immediately to left of point	Estimate tenths of a square from this line eastward to point	975
NORTHING	Read number on grid line immediately below point	Estimate tenths of a square from this line northward to point	984

EXAMPLE MILITARY GRID REFERENCE 975984  
Nearest similar grid reference 100,000 metres (about 6.3 miles)

First edition map updated by the SURVEYS AND MAPPING BRANCH, DEPARTMENT OF ENERGY, MINES AND RESOURCES. From aerial photographs, taken in 1968. Printed 1972.

Copies may be obtained from the Map Distribution Office, Department of Energy, Mines and Resources, Ottawa.



This Provisional Map is equivalent to a standard map in accuracy of content.

Some names on this map are not yet official. Corrections or additions are invited by the Surveys and Mapping Branch.

CONTOUR INTERVAL 100 FEET  
Elevations in Feet above Mean Sea Level  
North American Datum 1927  
Transverse Mercator Projection

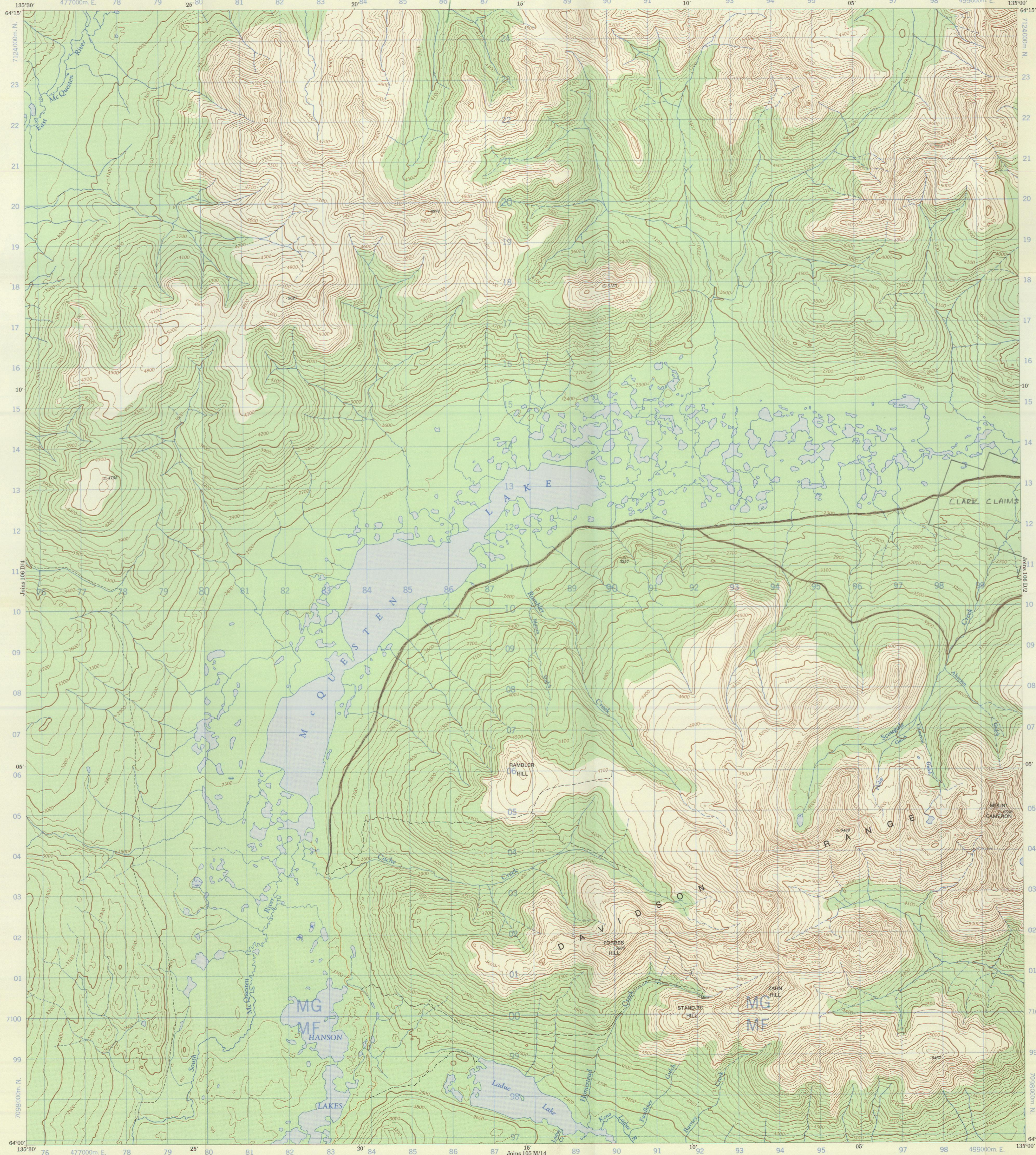
Cette carte provisoire équivaut une carte régulière au point de vue précision de l'information.

Certains noms inscrits sur cette carte ne sont pas encore officiels. La Direction des levés et de la cartographie saurait gré au public de lui signaler corrections et additions.

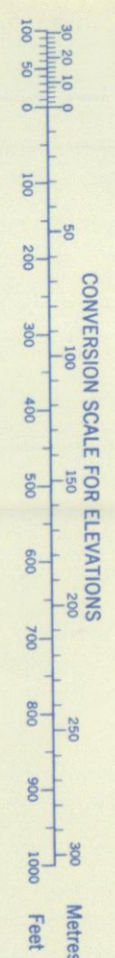
EQUIDISTANCE DES COURBES 100 PIEDS  
Elevations en pieds au-dessus du niveau moyen de la mer  
Système de référence géodésique nord-américain, 1927  
Projection transverse de Mercator

Première édition mise à jour par la DIRECTION DES LEVÉS ET DE LA CARTOGRAPHIE, MINISTÈRE DE L'ÉNERGIE, DES MINES ET DES RESSOURCES, d'après des photographies aériennes prises en 1968. Imprimée en 1972.

Ces cartes sont en vente au Bureau de distribution des cartes, ministère de l'Énergie, des Mines et des Ressources, Ottawa.

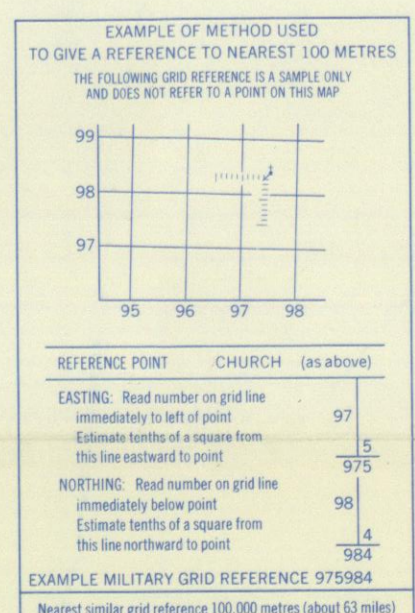
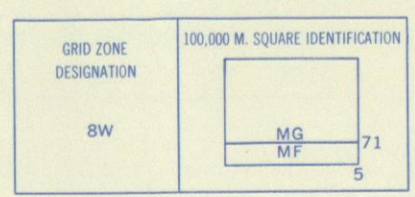


Refer to this map as: 106 D/3 EDITION 2 MCE SERIES A 722



Use diagram only to obtain numerical values. APPROXIMATE MEAN DECLINATION 1970 FOR CENTRE OF MAP. Annual change decreasing 4.5'

ONE THOUSAND METRE UNIVERSAL TRANSVERSE MERCATOR GRID ZONE 8



Produced by the SURVEYS AND MAPPING BRANCH, DEPARTMENT OF ENERGY, MINES AND RESOURCES. Updated from aerial photographs taken in 1968. Printed 1971.

Copies may be obtained from the Map Distribution Office, Department of Energy, Mines and Resources, Ottawa.

Roads: loose or stabilized surface, all weather... gravier aggloméré, toute saison... 2 lanes or more / 2 voies ou plus / less than 2 lanes / moins de 2 voies

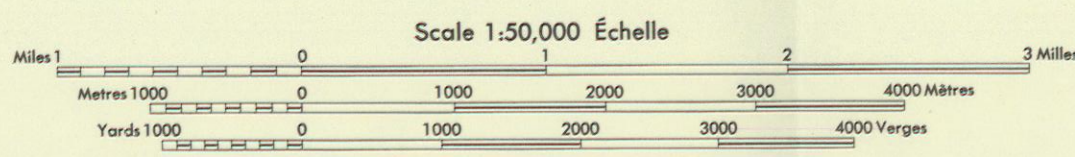
loose surface, dry weather and unclassified streets... de gravier, temps sec et rues hors classe

cart track... de terre

trail or portage... sentier ou portage

PLOUGH ROADS

McQUESTEN LAKE  
YUKON TERRITORY



This Provisional Map is equivalent to a standard map in accuracy of content.

Some names on this map are not yet official. Corrections or additions are invited by the Surveys and Mapping Branch.

CONTOUR INTERVAL 100 FEET  
Elevations in Feet above Mean Sea Level  
North American Datum 1927  
Transverse Mercator Projection

Cette carte provisoire équivaut une carte régulière au point de vue précision de l'information.

Certains noms inscrits sur cette carte ne sont pas encore officiels. La Direction des levés et de la cartographie saurait gré au public de lui signaler corrections et additions.

EQUIDISTANCE DES COUBRES 100 PIEDS  
Élévation en pieds au-dessus du niveau moyen de la mer  
Système de référence géodésique nord-américain, 1927  
Projection transverse de Mercator

Établie par la DIRECTION DES LEVÉS ET DE LA CARTOGRAPHIE, MINISTÈRE DE L'ÉNERGIE, DES MINES ET DES RESSOURCES. Map à jour d'après des photographies aériennes prises en 1968. Imprimée en 1971.

Ces cartes sont en vente au Bureau de distribution des cartes, ministère de l'Énergie, des Mines et des Ressources, Ottawa.