

September 5, 1967

Report received from Eagle Geophysics Company on Sept. 7, 1967.

Preliminary Report on a Ground Electromagnetic
and Magnetometer Survey, Glen Group, Burwash
Creek, Yukon Territory

Discussion of Results

^{great} The magnetometer survey showed the property to exhibit good magnetic relief as would be expected from an area with ultrabasic intrusions. Basically the survey area is interpreted as consisting of two magnetically different rock types, Units 1 and 2 on the accompanying map E-113-3.

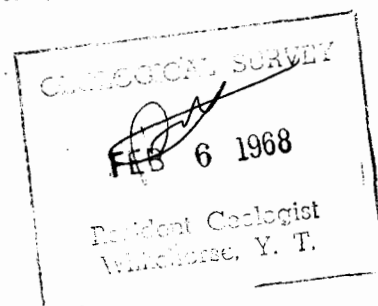
Unit 1 is believed to correspond to the sedimentary rocks, such as argillite, silicified limestone, quartzite, etc. of the Cache Creek Group, while Unit 2 is a complex unit consisting of intrusive ultrabasic rocks, basic rocks, and inclusions of the sedimentary rocks.

The electromagnetic survey, as performed with an EM 16 electromagnetic unit, indicated the presence of ten zones of weak to moderate conductivity. The locations of most of these correspond with those of inferred ultrabasic contacts as indicated by the magnetics. These conductive zones are shown on map E-113-4 and are numbered A, B, C, etc., and are best discussed individually.

Anomaly "A" This anomaly more or less parallels the same basic intrusive contact on which a Cu - Ni showing is located. The conductor trends N 70° W, and is more than 2600 feet long and has an overall apparent width of about 70 feet.

Detail work with 50 foot readings on lines 200 feet apart lead to several estimates of depth to the centre of mineralization assuming a cylindrical body, "h", and its radius, "a". These estimates are shown on map E-113-4, and the detail map E-113-5. They indicate a depth to the centre of mineralization of 100 to 200 feet.

Lines 6N and 8N were also surveyed with a Crone electromagnetic unit using a frequency of 1800 cycles per second, and weak responses were obtained on each line as can be seen from map E-113-6. This unit was then used as a vertical loop and the same lines re-run. Crossovers of weak amplitude were obtained on each line as shown on the map E-113-6, that using the 480 cycle per second frequency being slightly weaker than that of the 1800 cycle per second thus indicating moderate to fair conductivity. These crossovers agreed with the location of the conductor as detected by the EM 16.



Although the response with the Crone instrument was weak it should be remembered that this instrument is best suited to working with less than 100 feet of overburden, while 100 to 200 feet of overburden is present in this case.

As a result four holes are recommended to test for the existence and nature of this anomaly. They are as follows:

Hole #1 This 50° hole should be of 350 foot length and should be collared on L 14N and drilled "eastwards" on line so as to intersect O+15W at 200 feet below the surface.

Hole #2 This 50° hole should be of 350 foot length and should be collared on L18N and drilled "eastwards" on line so as to intersect O+30 W at 170 feet below the surface.

Hole #3 This 50° hole should be of 300 foot length and should be collared on L 6N and drilled "eastwards" on line so as to intersect O+00 at 100 feet below the surface.

Hole #4 This 50° hole should be of 400 foot length and should be collared on L 30N and drilled "eastwards" on line so as to intersect 3+25 W at 220 feet below the surface.

Anomaly "B" This anomaly is 1500 feet South of Anomaly "A" and is roughly parallel to it. It also parallels another ultrabasic contact. The conductor is more than 2400 feet long and has an average estimated width of 70 feet.

Detail work done over part of this anomaly with 50 foot readings on lines 200 feet apart gave estimates of depth to centre of mineralization, "L", assuming a cylindrical body and its radius "a". These estimates indicated a depth to the centre of mineralization of 100 to 200 feet and are shown on map E-113-5.

As a result, two holes are recommended to test for the existence and nature of the anomaly. They are as follows:

Hole #5 This 50° hole should be of 350 foot length and should be collared on L 22N and drilled "westwards" on line so as to intersect O+80 W at 185 feet below the surface.

Hole #6 This 50° hole should be of 300 foot length and should be collared on L 24N and drilled "westwards" on line 20 so as to intersect O+30 W at 95 feet below the surface.

Anomaly "C" This anomaly trends roughly parallel to "A" and "B". It is relatively short, namely about 800 feet, but it could conceivably be part of anomaly "D". It also trends along another ultrabasic contact.

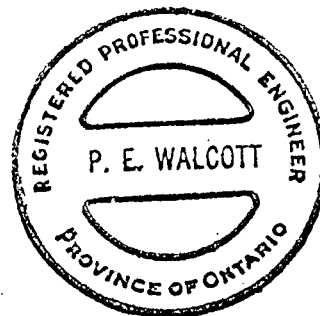
This anomaly should be subjected to prospecting, detailed surveying, and drilling.

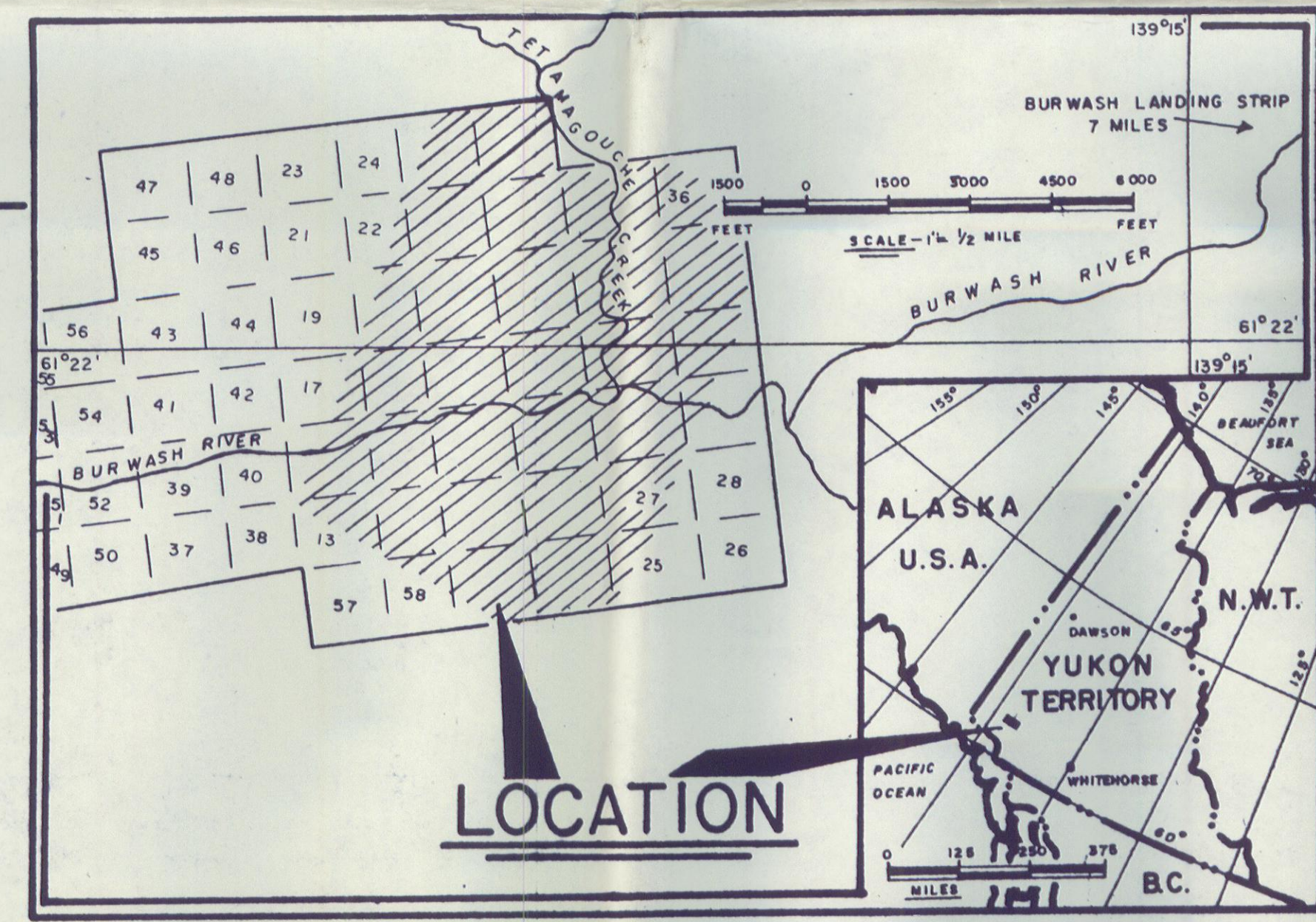
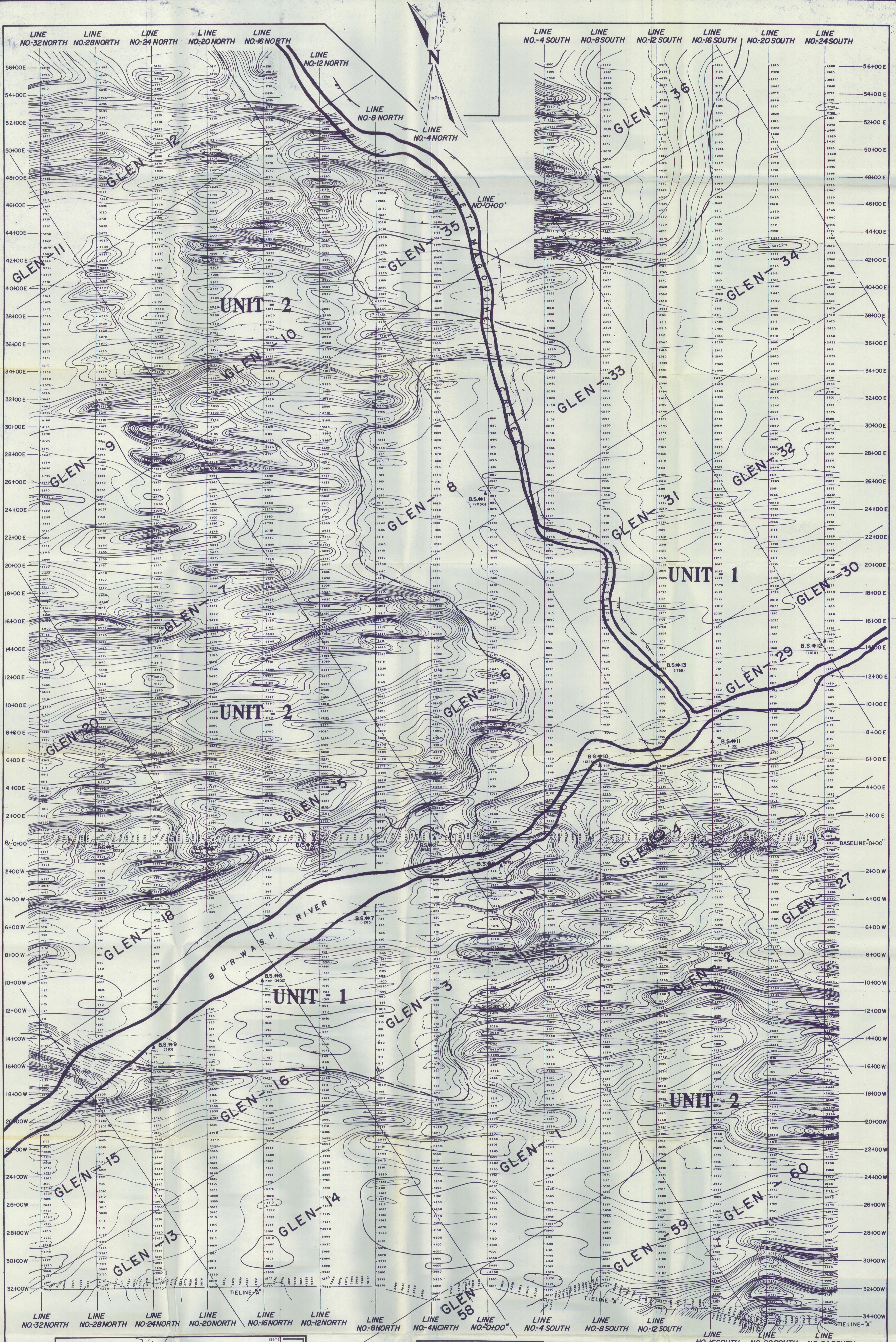
The Others These anomalies are relatively weak conductors on which further work is not recommended at this time. However, should the recommended drilling on "A" and "B" prove successful, these anomalies should be reviewed with regards to the possibility of further investigation.

Respectfully submitted,
EAGLE GEOPHYSICS LIMITED

Peter E. Walcott

Peter E. Walcott, P. Eng.
Geophysicist





LEGEND
MAGNETOMETER SURVEY
 Contour Interval 250 Gammas
 1000 Gamma Contour
 250 Gamma Contour
 Magnetic Low
 ▲ - Base Station
 Geological Contact Inferred from Magnetic Data

SYMBOLS
 Claim Boundary
 River, Creek Outline
 Cliff

TO ACCOMPANY REPORT BY P.E. WILCOX, P.E.
 DATED AUGUST, 1967

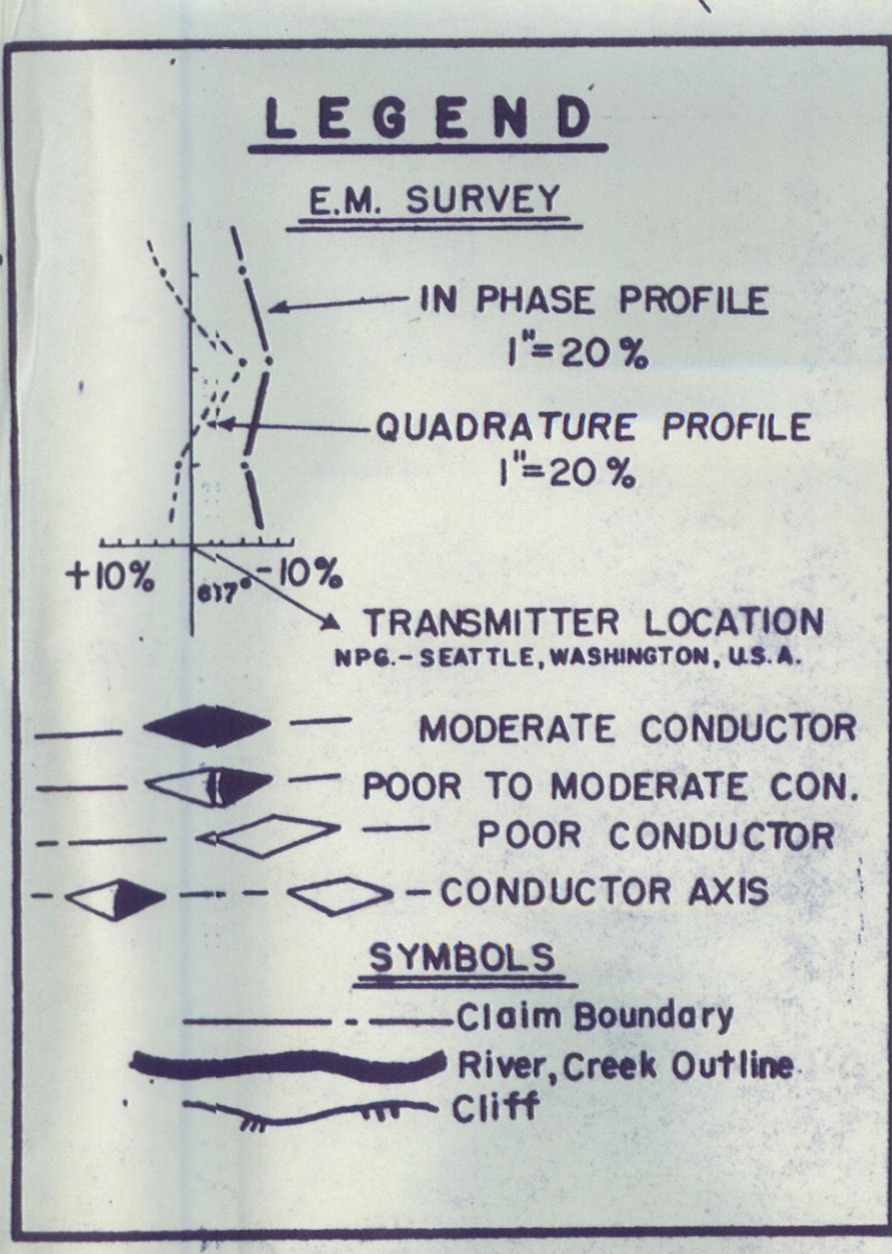
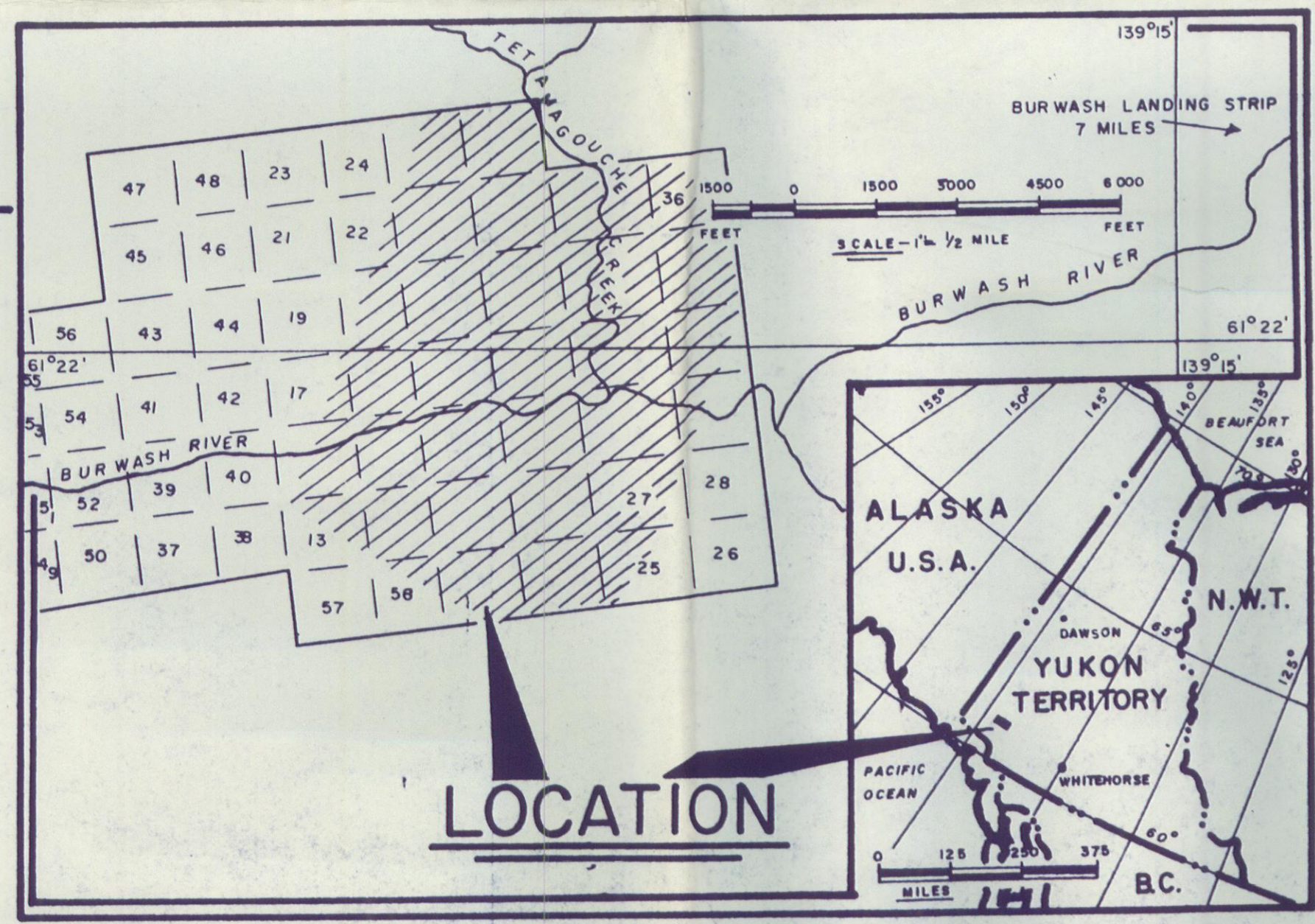
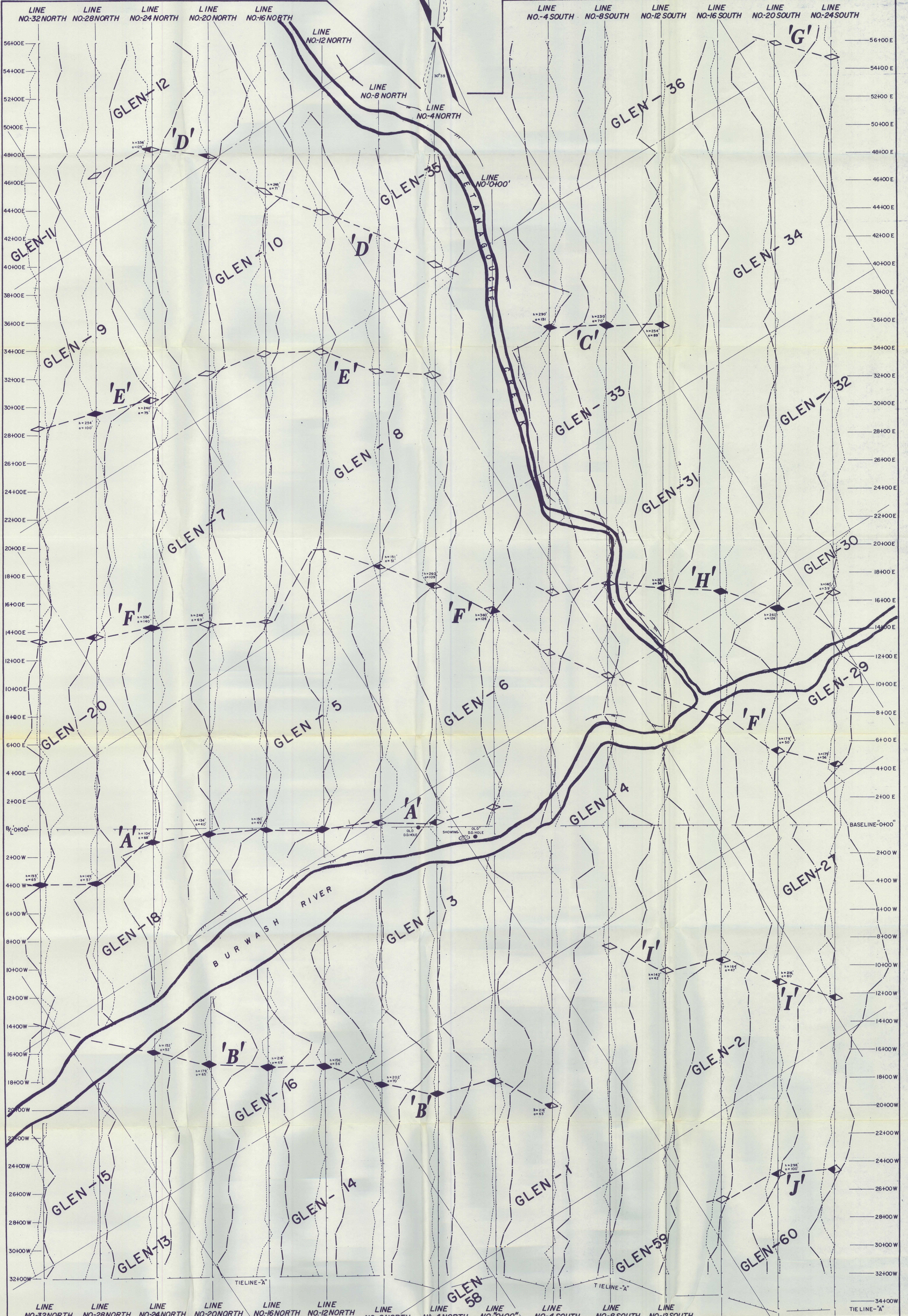
ALICE LAKE MINES LTD. (NPL)
 BURWASH PROPERTY- YUKON TERRITORY- WHITESHORSE MINING DIVISION

MAGNETOMETER SURVEY

Scale = 1" = 200 Feet

MAP NO.-E-113-3

EAGLE GEOPHYSICS LIMITED
 JUNE - 1967



TO ACCOMPANY REPORT BY P.E. WALCOTT, P.E., DATED AUGUST, 1967.

ALICE LAKE MINES LTD. (NPL)
 BURWASH PROPERTY - YUKON TERRITORY - WHITEHORSE MINING DIVISION

RONKA E.M. - 16
ELECTROMAGNETIC SURVEY

Scale - 1" = 200 Feet

EAGLE GEOPHYSICS LIMITED
 JUNE - 1967

MAP NO. - E-113-4