

ASSESSMENT REPORTS

MAP No. 105-0-6 **TYPE OF WORK:** Geol., Geochem., Geophy.

REPORT FILED UNDER	Atlas Explorations Ltd.	
DATE PERFORMED	July 1968	DATE FILED:
LOCATION -	LAT.	63°25'N
	LONG.	131°20'W
CLAIM Nos.	ART 1-8 Y14156-163	
	9-12 Y14214-217	
WORK DONE BY	T.J. Adamson	
WORK DONE FOR	Atlas Explorations Ltd.	
REMARKS	<p>The claims are underlain by ordovician-devonian chert, shales, limestone, quartzite, argillite and phyllite. Geological mapping, soil sampling, Mag. and E.M. surveys were conducted, however, no sulphide mineralization was</p> <p style="text-align: right;">(over)</p>	

~~was~~ seen. No further work is recommended on these claims.

ART MINERAL CLAIM GROUP

Mayo Mining District
Yukon Territory

Report on Geological, Geochemical
and Geophysical Work done during
1968 Field Season

Longitude : 131° 20' West
Latitude : 63° 25' North

N.T.S. 105-O-6

By:

T. J. Adamson

ATLAS EXPLORATIONS LIMITED

October 31, 1968

LIST OF CLAIMS

Claim Number

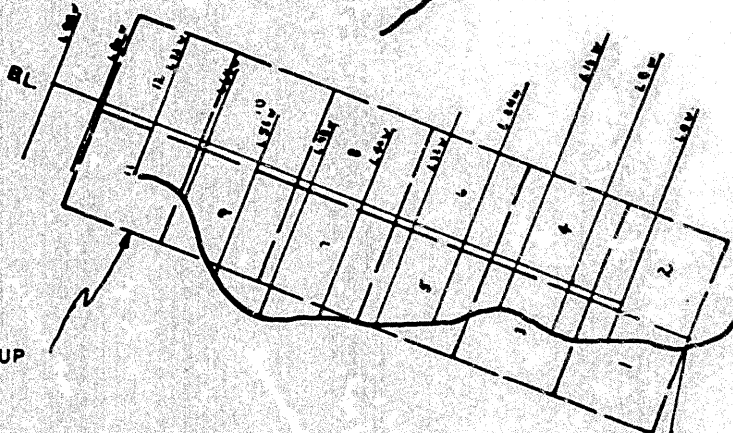
Grant Number

ART 1-8

Y14156 - Y15163

ART 9-12

Y14214 - Y14217



ART MC. GROUP

E END NIDDERY LAKE : 6.9 MILES

ART GROUP KEY MAP CLAIMS & GRID

Scale: 1" = $\sqrt{2}$ Mile

Claim Sheet 105-0-6

TABLE OF CONTENTS

LIST OF CLAIMS

KEY MAP

INTRODUCTION	1
LOCATION AND ACCESS	1
GEOLOGY	2
GEOCHEMISTRY	2
GEOPHYSICS	3
SUMMARY AND CONCLUSIONS	3

Appendix I	List of personnel
Appendix II	Fig. 1 - Geology Map (grid 1":400')
	Fig. 2 - Ground Magnetics - Values and Contours (1":400')
Appendix III	Fig. 3 - Ground EM - Values and Profiles (1":400')
	Fig. 4 - Geochemical Values - Soils (1":400')
Appendix IV	Fig. 5 - Geochemical Contours - Zinc (1":400')
	Fig. 6 - Geochemical Contours - Copper (1":400')

ATLAS EXPLORATIONS LIMITED

(N.P.L.)

330 MARINE BUILDING
325 BURRARD STREET
VANCOUVER 1, B.C.

ART MINERAL CLAIM GROUP REPORT ON GEOLOGICAL, GEOCHEMICAL AND GEOPHYSICAL WORK DONE DURING 1968 FIELD SEASON

INTRODUCTION

The Art Group was evaluated by the Hess Properties crew during the period of July 6th to July 15th, 1968. The crew consisted of a geologist, 2 student assistants, 2 linecutters and a cook.

The Art Group was staked in 1967 on the basis of high copper, lead and zinc values in soils obtained on a reconnaissance soil sample traverse along the valley bottom.

In July, 1968, a grid was cut over the area of interest (800 foot line spacing, total footage 41,000 ft.). Over this grid geology was mapped and soil samples were collected at 100 ft. intervals on all grid lines. Magnetic and electromagnetic surveys were also run.

LOCATION AND ACCESS

The Art Mineral Claim Group is located at approximately 63°25' North latitude and 131° 20' West longitude, in the central portion of claim sheet 105-0-6. The property is about 105 miles from Ross River, the nearest settlement.

Access to the Art Group is by fixed-wing aircraft to Niddery Lake (approximately 8 miles south of the property) or Jake Lake (approximately 5 miles SE of the property) and thence by helicopter to the property.

The topography in the claim group area is very steep and rugged, with heavy undergrowth at the lower elevations.

GEOLOGY

Regionally, the claim group is within a thick Ordovician-Devonian section composed mainly of black chert, black shales and slates and minor limestone, quartzite, argillite and phyllite.

The sediments are quite uniformly steeply dipping, and strike in an easterly to southeasterly direction.

The grid area is underlain by Ordovician-Devonian, unit 3a. This unit has been broken down to include:

- 3a - i Dark grey to black graphitic chert
- 3a - ii Light to dark grey massively bedded argillite.

The general strike is about 115° and dipping steeply to the north or south. A number of aplitic sills have intruded the above units. A small granitic intrusive is located just west of the grid area. The granitic intrusive has produced strong hornfelsic alteration in the western grid area. The hornfels is thinly banded, light to dark grey and very siliceous. The black cherts tend to become bleached and re-crystallized near the intrusive contact. In places the hornfels is quite pyrite rich and rusty. Other than pyrite in the hornfels, no sulphides were seen in the area.

GEOCHEMISTRY

A total of 326 soil samples were taken at 100 ft. intervals on the grid with 800 ft. line spacing. Copper and zinc values were found to be quite high in the hornfelsed northwest section of the grid. A small coincident copper-zinc anomaly centred

at line 72W, 5+00S is in an area of highly fractured black chert laced with small quartz veinlets, again, no sulphides other than very minor pyrite was noted. In other places on the grid there are a few small random high copper and zinc values but none that are coincident.

GEOPHYSICS

A magnetometer survey was run over the grid, background appears to be about 1900 gammas. The area of hornfelsic alteration is all above magnetic background with values ranging from 2000 to 2500 gammas. A large anomaly (3200 by 800 ft.) with values ranging from 2000 to 3000 gammas is located over the south-central grid area, there is no outcrop over the peak of the magnetic response. Outcrop noted near the flanks of the anomaly consists of unaltered black cherts and argillite. This anomaly is 'open' to the southeast. The causative structure of this anomaly is possibly a small intrusive plug. The magnetic anomaly does not coincide with any of the geochemical anomalies.

Crone EM (JEM) horizontal loop was also run over the grid. Results over most of the grid area are small to large negative dip angles. These negative responses are caused by the high and varying percentage of graphite in the sediments. A few high intensity positive dip angles were recorded in the western grid area and could be attributed to high pyrite content in the hornfels. No significant trends could be deduced from the electromagnetic results.

SUMMARY AND CONCLUSIONS

No significant sulphide mineralization was seen in the area, either in place or in float.

Outcrop over the best coincident copper and zinc geochemistry consists of fractured graphitic chert laced with quartz stringers.

No coincidence is apparent between geophysical and geochemical responses.

Electromagnetic results showed no significant conductive trends.

On the basis of the above conclusions, it is recommended that the Art Mineral Claims be allowed to lapse.

Respectfully submitted,



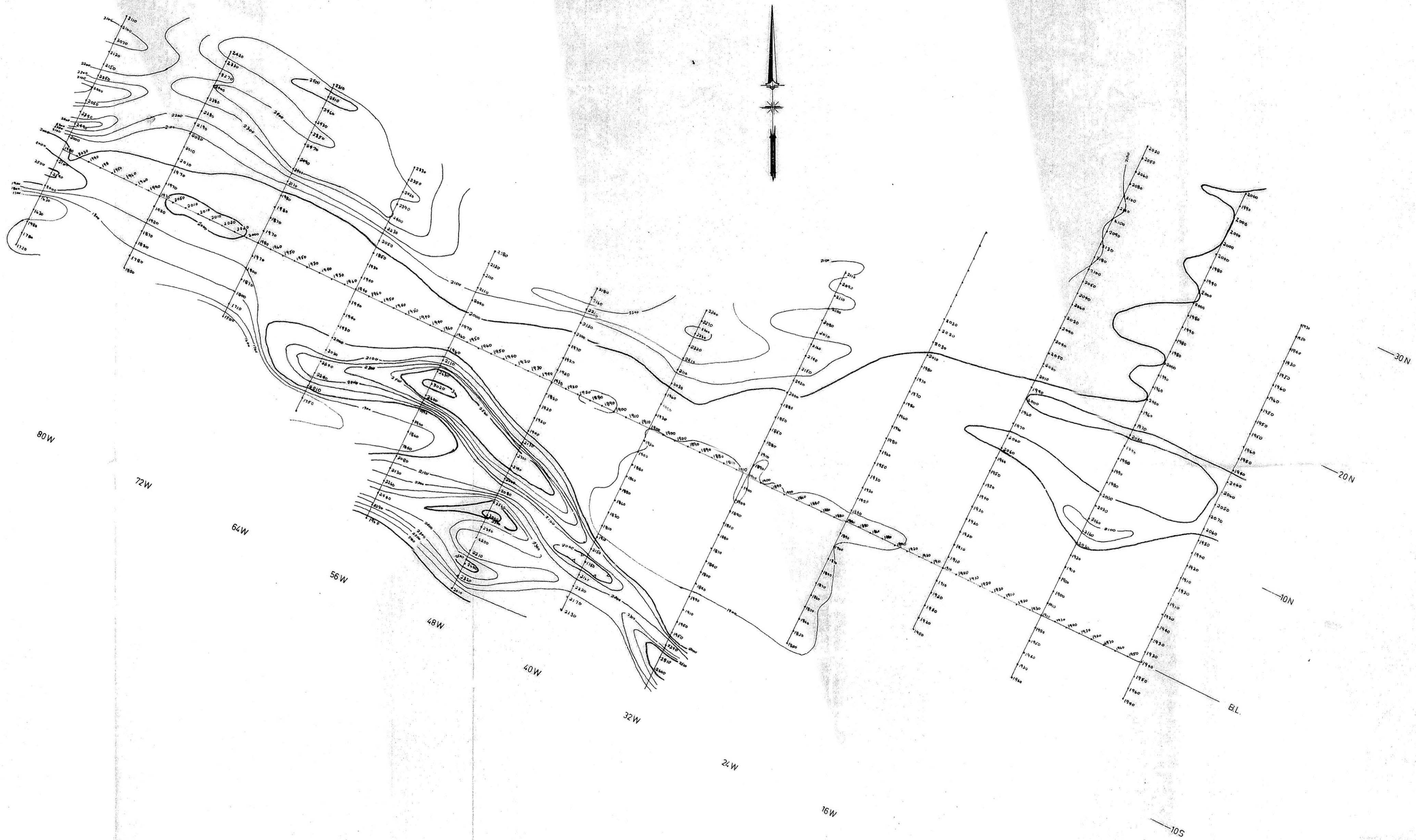
T. J. Adamson,
Geologist

October 31, 1968



LIST OF PERSONNEL
ART MINERAL CLAIM GROUP
GEOLOGICAL, GEOCHEMICAL & GEOPHYSICAL SURVEYS

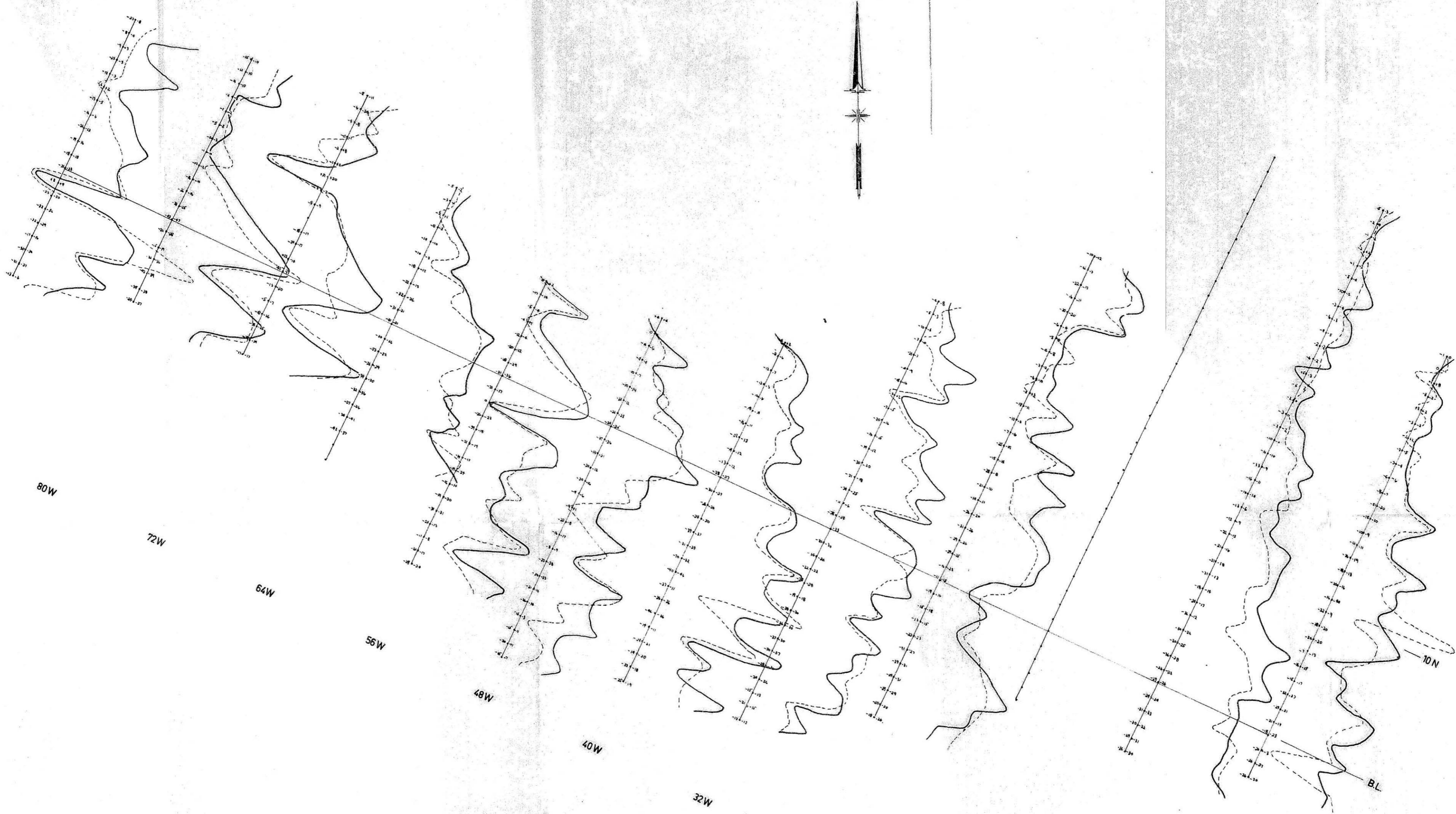
T. J. Adamson	Geologist-Party Chief	Vancouver, B.C.
M. Simpson	Student Assistant	Vancouver, B.C.
T. Brock	Student Assistant	Vancouver, B.C.
G. Galt	Cook	Vancouver, B.C.
F. Charlie	Linecutter-Geochem Sampler	Ross River, Y.T.
T. Charlie	Linecutter-Geochem Sampler	Ross River, Y.T.



ATLAS EXPLORATIONS LIMITED
 ROSS RIVER (Y.T.)
 HESS REGION
 ART MINERAL CLAIM GROUP
 GROUND MAGNETOMETER SURVEY
 VALUES AND CONTOUR MAP

PARTY CHIEF: T. ADAMSON INSTRUMENT: SHARPE MF-1 DRAWN BY: T. ADAMSON
 OPERATOR: M. SIMPSON (GAMMA VALUES) DATE: NOVEMBER 1968





ATLAS EXPLORATIONS LIMITED
 ROSS RIVER (Y.T.)
 HESS REGION
 ART MINERAL CLAIM GROUP
 GROUND ELECTROMAGNETIC SURVEY
 VALUES AND PROFILE MAP

PARTY CHIEF: T. ADAMSON INSTRUMENT: CRONE JEM DRAWN BY: P.J.F. VLASVELD
 OPERATORS: T. BROCK & DIP ANGLE SCALE: 1/10" = 2' DATE: NOVEMBER 8/88
 F. CHARLIE
 1800 cps 480 cps 0 400 800 feet

88W

80W

72W

64W

56W

48W

40W

32W

24W

16W

8W

0

10S

20N

30N

ATLAS EXPLORATIONS LIMITED
 ROSS RIVER (Y.T.)
 HESS REGION
 ART MINERAL CLAIM GROUP

GEOCHEMICAL RESULTS BY ATOMIC ABSORPTION, COPPER, LEAD
 AND ZINC, SPECTROPHOTOMETER ANALYSIS.

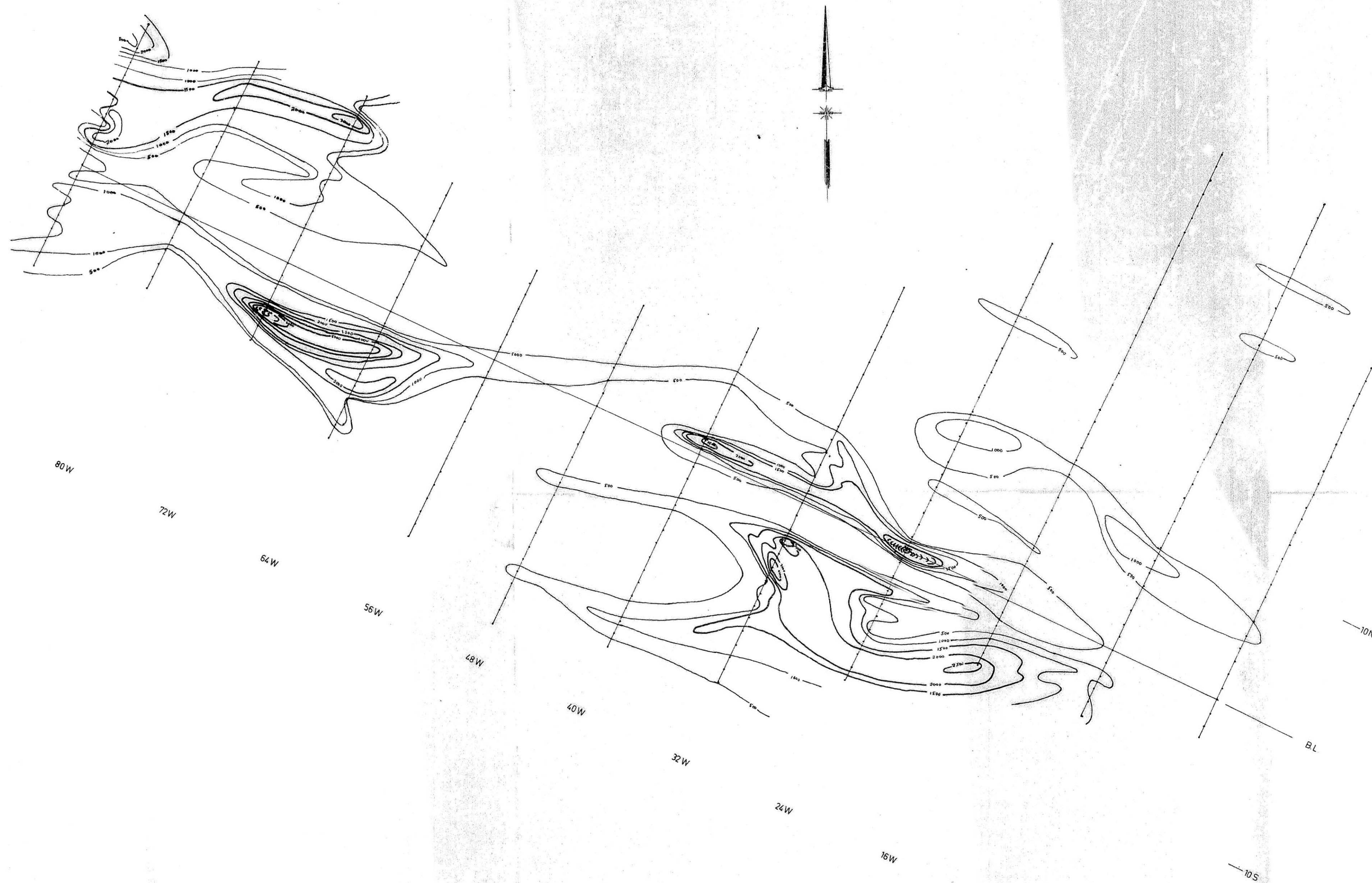
PARTY CHIEF: I. ADAMSON
 SOIL SAMPLER: T. BROCK

DRAWN BY: P.J.F. VLASVELD
 DATE: NOVEMBER 1968

400 0 400 800 feet

105-0-6

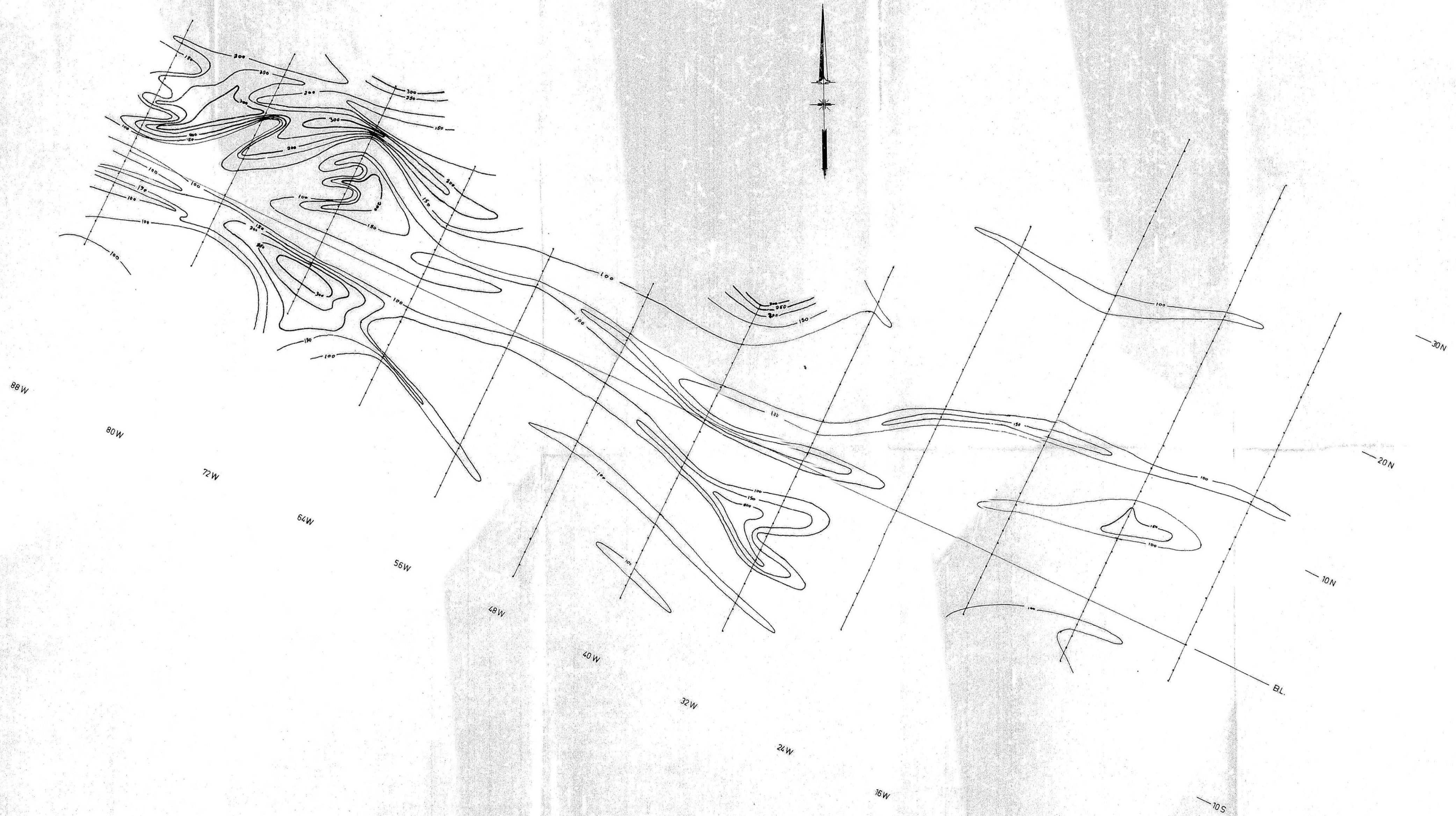




ATLAS EXPLORATIONS LIMITED
 ROSS RIVER (Y.T.)
 HESS REGION
 ART MINERAL CLAIM GROUP
 GEOCHEMICAL SOIL SAMPLE SURVEY
 ZINC CONTOUR MAP

PARTY CHIEF: T. ADAMSON DRAWN BY: T. ADAMSON
 DATE: NOVEMBER 1968





ATLAS EXPLORATIONS LIMITED
 ROSS RIVER (Y.T.)
 HESS REGION
 ART MINERAL CLAIM GROUP
 GEOCHEMICAL SOIL SAMPLE SURVEY
 COPPER CONTOUR MAP

PARTY CHIEF: T. ADAMSON
 DRAWN BY: P.J. FVLASVELD
 DATE: NOVEMBER 13/88

