

GEOPHYSICAL SURVEYING

ON THE

PROPERTY OF

RICHORE GOLD MINES LTD.

ANVIL DISTRICT

YUKON TERRITORY

MONTREAL, P. Q.

July 6th, 1967.

J. C. SHAW, ENG.



S

GEOPHYSICAL SURVEYING

ON THE

PROPERTY OF

RICHORE GOLD MINES LTD.


ANVIL DISTRICT,

YUKON TERRITORY

SUMMARY AND CONCLUSIONS

The property of Richore Gold Mines Ltd. herewith reported on is located in the Anvil District of the Yukon Territory of Canada. Major mineral deposits have been outlined in the district by Kerr Addison Mines Ltd. and Anvil Mining Corporation and work is proceeding toward eventual production by Anvil Mining on their large lead-zinc ~~copper~~ deposits.

The geophysical surveys on the property of Richore have outlined anomalous areas that are worthy of follow-up prospecting in an endeavour to locate the source of these anomalies which are believed to lie



up-hill from the anomalies at or near the contact between the sediments to the south and the volcanic flows and favourable schist to the north.

It is recommended that a geologist examine the anomalous areas and locate at least three locations for short diamond drill holes to probe the underlying bedrock to a depth of some 200 feet. A total of 600 feet of preliminary diamond drilling will be required.

PROPERTY

The property of Richore Gold Mines Ltd. consists of the Taku Claims numbered 1 to 10 and 21 to 26 inclusive, and comprise a group of 16, 40 acre claims which adjoin Anvil Corporation's Cal Group to the northeast and the Glynn Group to the southwest.

These claims are registered in Whitehorse, Yukon, as follows:

<u>Claim Name</u>	<u>Grant Numbers</u>
Taku 1 - 10 Inclusive	Y 1909 - 1918
Taku 21 - 26 "	Y 1994 - 1999

10

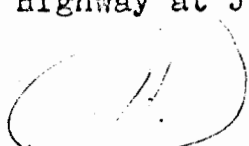
LOCATION

The Anvil district is an area five to ten miles wide extending for some seventy miles along the north east side of the Pelly River, more or less following the Anvil Range of mountains. The district is some 125 miles northeast of Whitehorse.

The group is slightly over two miles from the river at a point about five miles downstream (northwest) from the mouth of Vangorda Creek and forty miles downstream from Ross River settlement. The same point is about ten miles downstream from the proposed ferry crossing of the Pelly River at the mouth of Blind Creek. The group is six miles southeast, three and four miles south, and nine miles northwest, respectively, from Rose Mountain, Faro airstrip, Faro mineral deposit, and Vangorda mineral deposit.

ACCESS

Ross River settlement, in the south eastern corner of the district, is accessible by the old all-weather Canol Road, which joins the Alaska Highway at Johnsons



PAGE 4.

Crossing, and also by the new Ross River - Watson Lake Road. The distance by road from Whitehorse to Ross River settlement is about 240 miles. An extensive network of winter roads has been built in the district by the more active mining companies and some of these may be passable in summer. A new gravel highway is being started this summer to link Ross River with Carmacks, on the Whitehorse - Dawson City Highway, and this superior route will be completed in 1967.

The district is served by fixed-wing aircraft and helicopters, from Whitehorse, which land on the many small lakes in the area and on airstrips at Anvil's Faro and Ace properties, the Vangorda property, and at Ross River. These airstrips are all large enough for DC-3 aircraft, when ground conditions are suitable.

The Richore group is presently only accessible by helicopter or on foot from the Faro airstrip. A suitable landing place for float-equipped aircraft might be found nearby along the Pelly River.

Development of this mining camp will hinge on the construction of a railway from Whitehorse, some 250 miles long, to link with the existing White Pass and Yukon Route which originates at Skagway, on the Pacific Ocean, a further 110 miles distant.

12

PAGE 5.

GEOLOGY

The geology of the area is well reported on by R. J. Cathro in his report to the company dated June 6th, 1966. A photostat of this report is appended.

The favourable horizon in the district is apparently the schist which occurs on the north side of the Richore property. Detailed geological mapping may show that the northern claim groups contain more of this formation than the regional mapping has indicated.

GEOPHYSICAL SURVEY

A geophysical survey was completed by a crew of Quebec Geophysics Ltd., covering the 16 claim group of Richore Gold Mines Ltd. This survey was conducted from a grid of north-south lines spaced at 400 feet with readings and samples taken at 100 foot spacing for the magnetometer and 200 foot spacing for geochemical samples. The magnetic susceptibility of the underlying rock was measured and the soil samples were analyzed for their zinc and copper content.

13

The results were plotted on separate maps and contours drawn outlining the results.

SURVEY RESULTS

Magnetometer Survey

The magnetometer survey showed that the sedimentary formations underlying the southern and eastern portion of the claim group are not magnetic while the volcanics and schist formations are magnetic. The contact between the conglomerate and volcanics runs in a northeasterly direction from a point 400 feet north of the baseline on Line 8W to a point 1,500 feet north of the baseline on Line 28E.

In the northwest corner and along the northern boundary of the claim group a series of negative readings could indicate that this area is underlain by the favourable schist horizon.

Geochemical Survey

The results of geochemical analysis for copper and zinc samples were plotted on separate maps drawn at a scale of 400 feet to the inch and anomalous area outlined. For copper, two anomalies are indicated both

of which indicate minor concentrations. One of these is located 600 feet north of the base line on Line 4W and the other 1,000 feet north of the base line on Line 20E. A coincident zinc and magnetic anomaly on Line 4W indicates a likely target for further exploration. For zinc, three anomalies are indicated, one on Line 12E, 1,800 feet north of the base line and two on Line 4W at 600 feet and 1,600 feet north of the base line. Of these anomalies the most significant is that which occurs on Line 4W at 600 feet north of the base line. The results show a one point anomaly of 1,100 parts per million.

DISCUSSION OF RESULTS

The results of the combined surveys indicate that copper and zinc minerals are present in the soil tested in an area on the property that is magnetic and likely underlain by volcanic rocks. Topography of the area is such that there has likely been migration of minerals from north to south down the hillside and prospecting should be done to the north of the anomalies.

Most of the geochemical anomalies occur as one line anomalies or as a single reading anomaly hence it

(15)

PAGE 8.

it is unlikely that a large orebody is present on the property but the fact that anomalies do exist suggest that some follow-up work is indicated.

RECOMMENDATIONS

It is recommended that a geologist examine the area where anomalies occur on line 4W and line 12E and spot drill locations to test the underlying bedrock for the cause of these anomalies. Two holes are recommended for line 4W to test conditions 600 feet north and 1,500 feet north of the baseline. One hole is recommended for line 12E to test conditions 1,800 feet north of the baseline. These holes should be located by the geologist so that a maximum of 200 feet per hole will cover the area of interest.

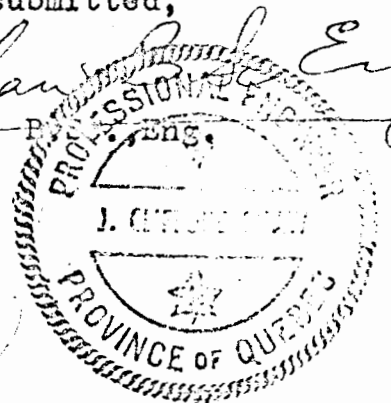
COST OF WORK RECOMMENDED

It is believed that drilling rigs are available in the area and for the 600 feet of drilling recommended, including transportation for the geologist and equipment, a total of \$9,000. will be sufficient for this preliminary diamond drilling.

Respectfully submitted,

J. C. Shaw, P. Eng.
J. C. Shaw, P. Eng.

Montreal, P. Que.
July 6th, 1967.



16

C E R T I F I C A T I O N

I, J. C. Shaw, do hereby certify that I reside at 113 rue de Gascogne, in Preville, P. Que..

That I am a Mining Engineer, a graduate of Queen's University at Kingston, Ontario, with a B. Sc. degree in 1948 and that I have been practising my profession since that date.

That I have no interest in the securities of Richore Gold Mines Ltd. or in the property reported and I do not expect to receive any interest other than my fee as a consultant for work performed.

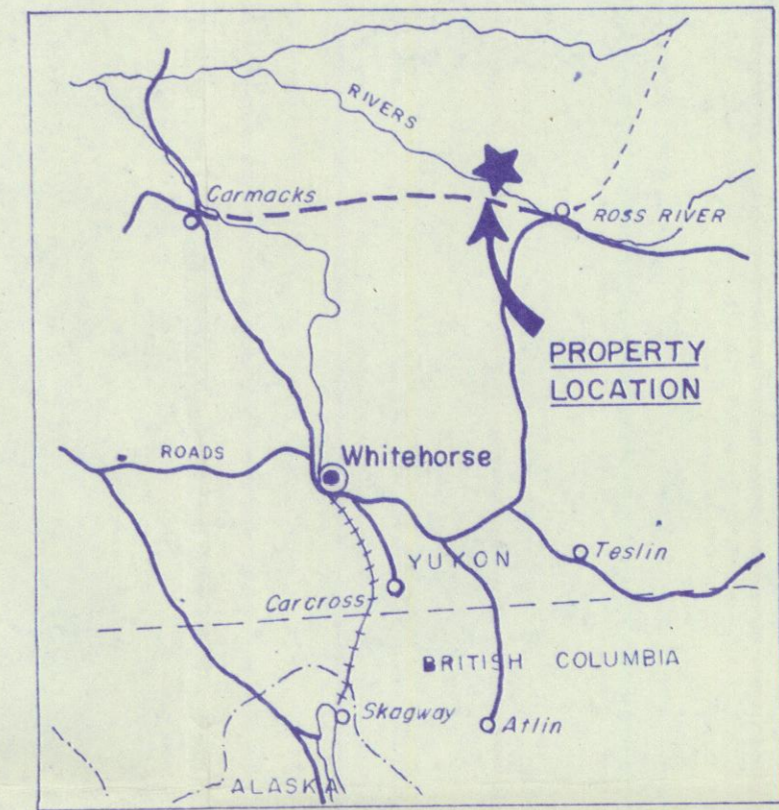
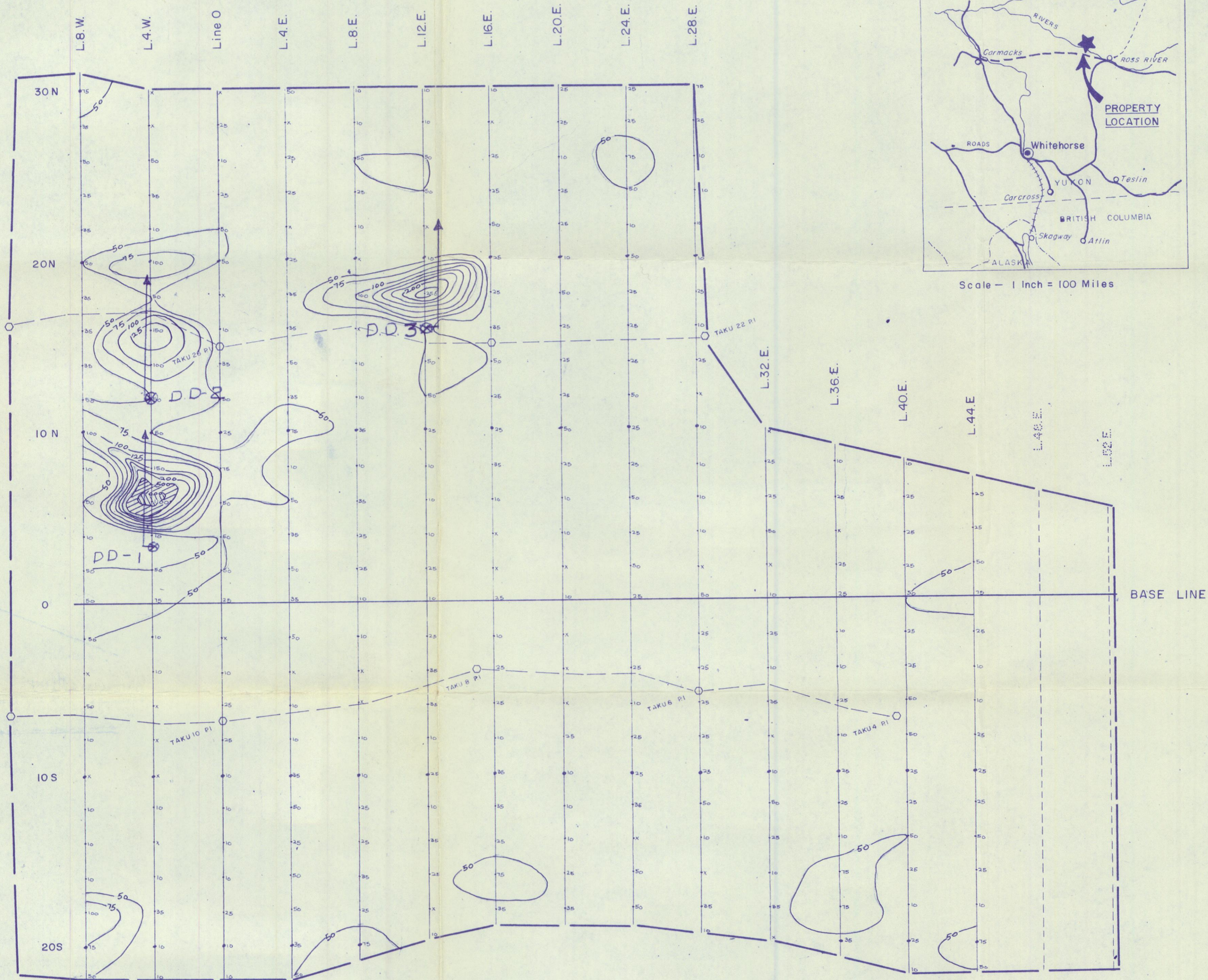
Signed:

J. C. Shaw Eng
J. C. Shaw, Eng.

Montreal, P. Que.
July 6th, 1967.



17



Scale - 1 Inch = 100 Miles



Zinc

GEOCHEMICAL SURVEY

July 6/67

- for -

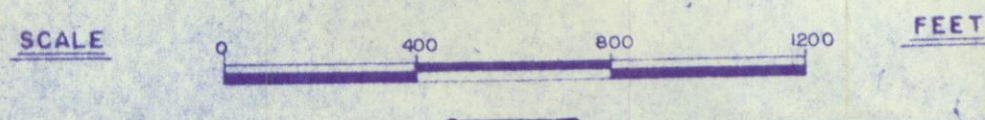
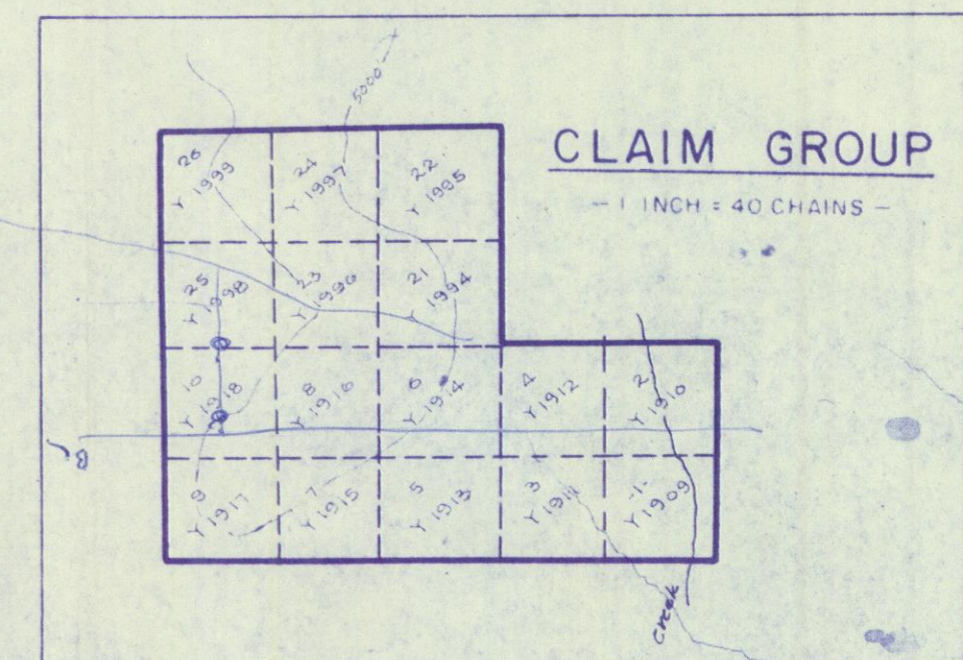
RICHORE MINES LTD.

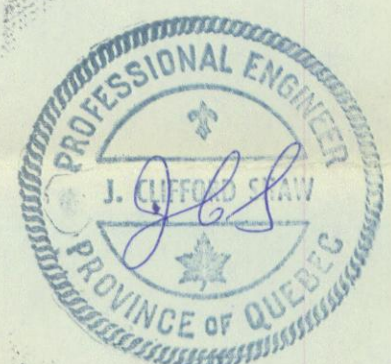
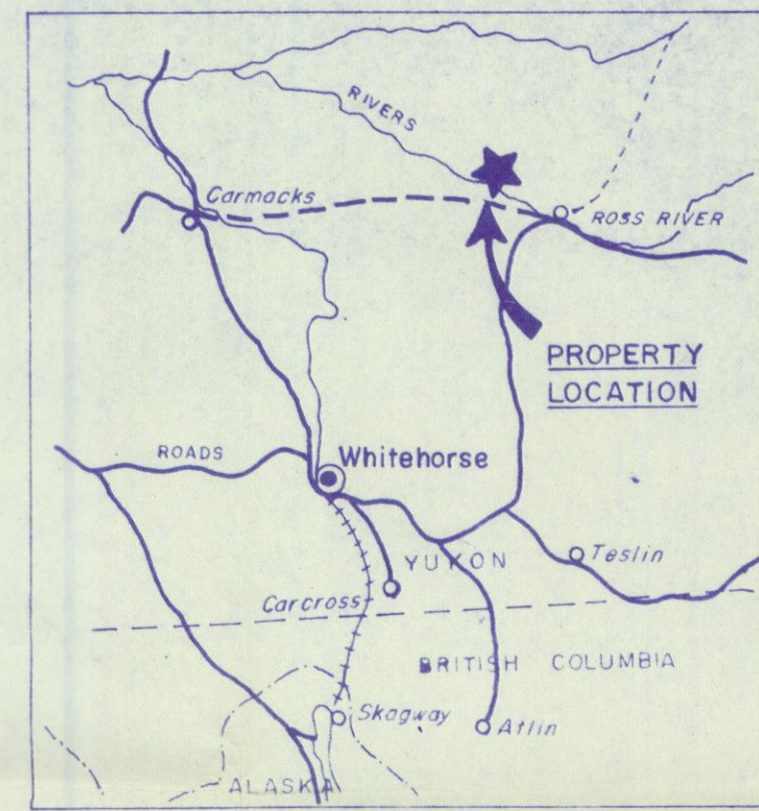
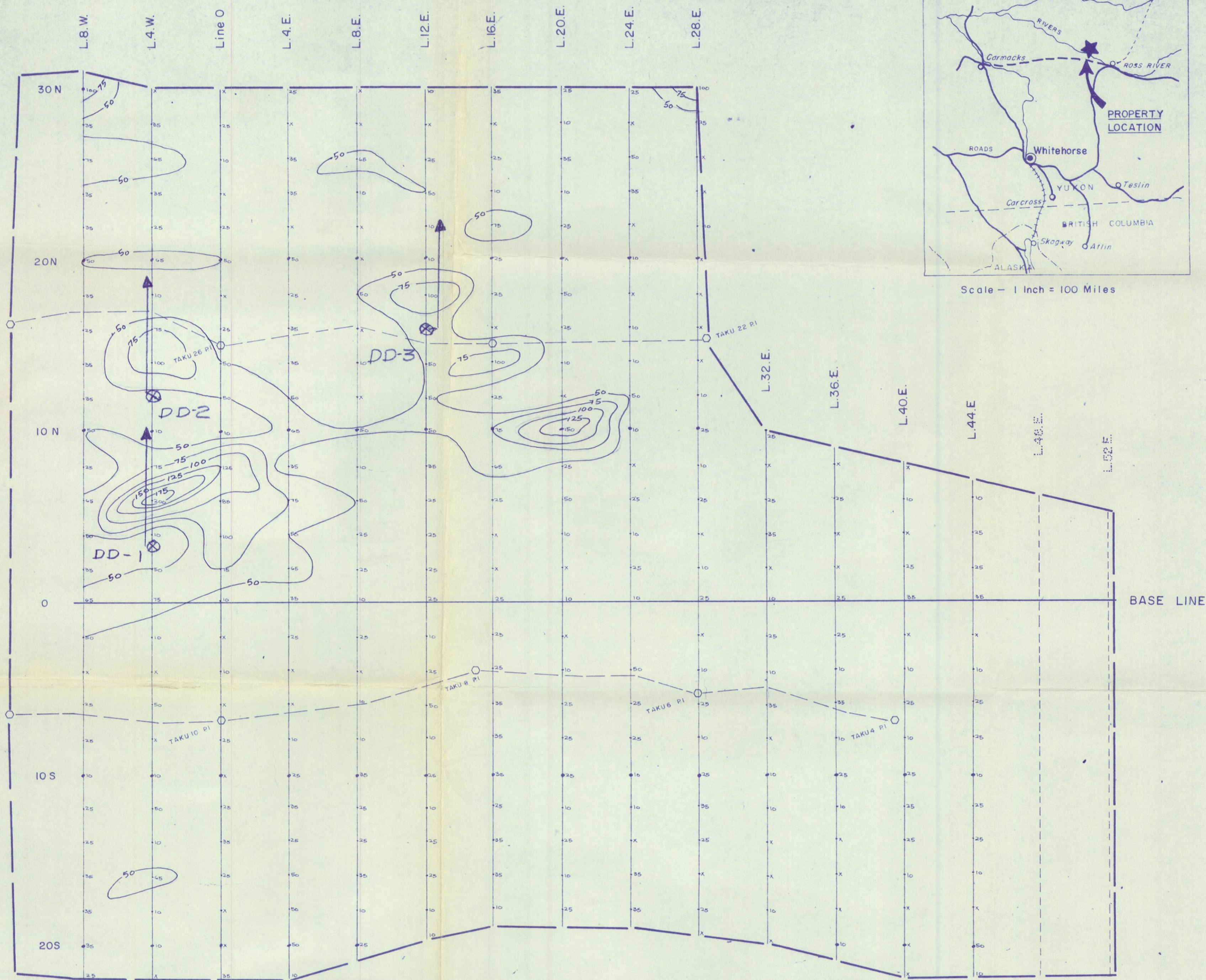
ANVIL DISTRICT, YUKON

- by -

QUEBEC GEOPHYSICS LTD.

NOTE - Results obtained by Hot Acid Extraction
 Values represent total zinc content
 expressed in parts per million (pp.m.)
 X < 10pp.m.





Copper

GEOCHEMICAL SURVEY

July 6/67

- for -

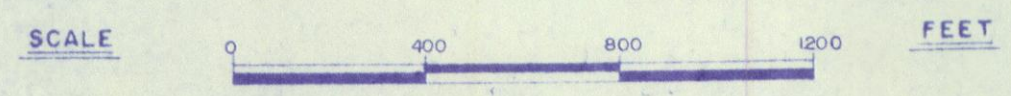
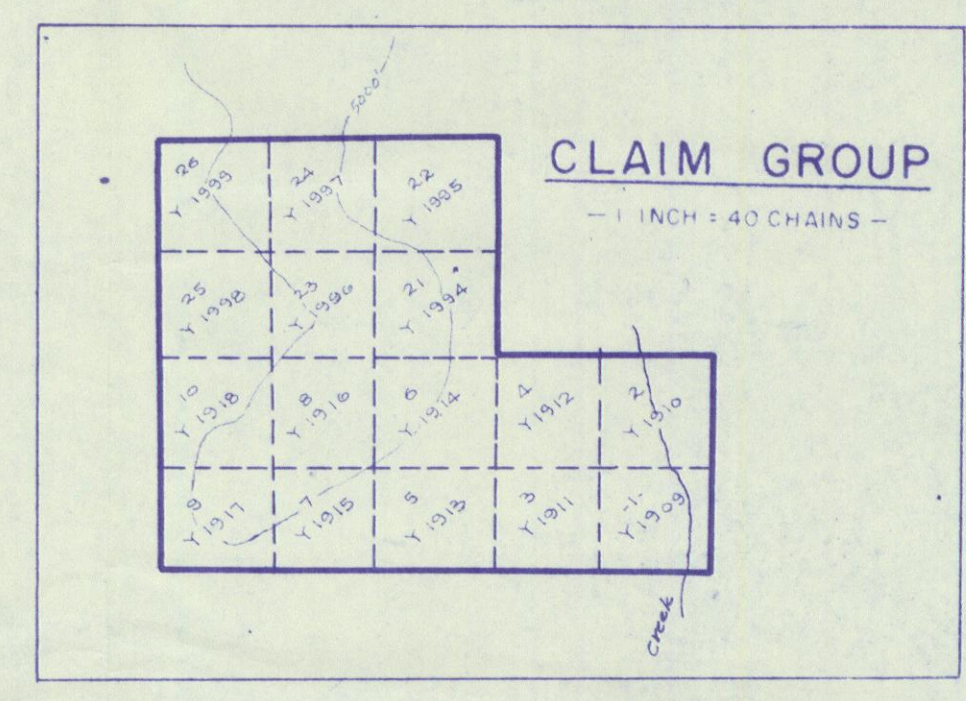
RICHORE MINES LTD.

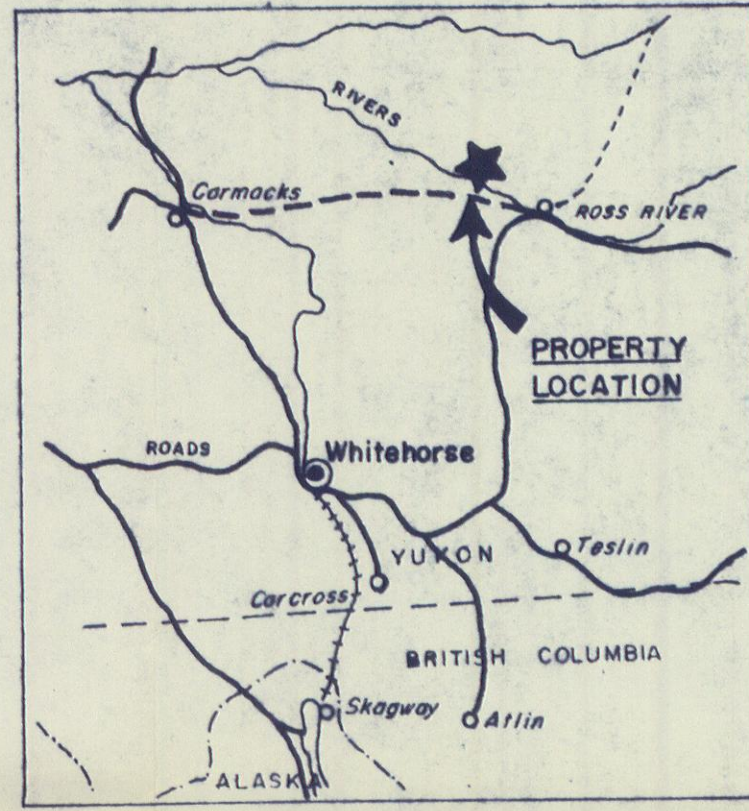
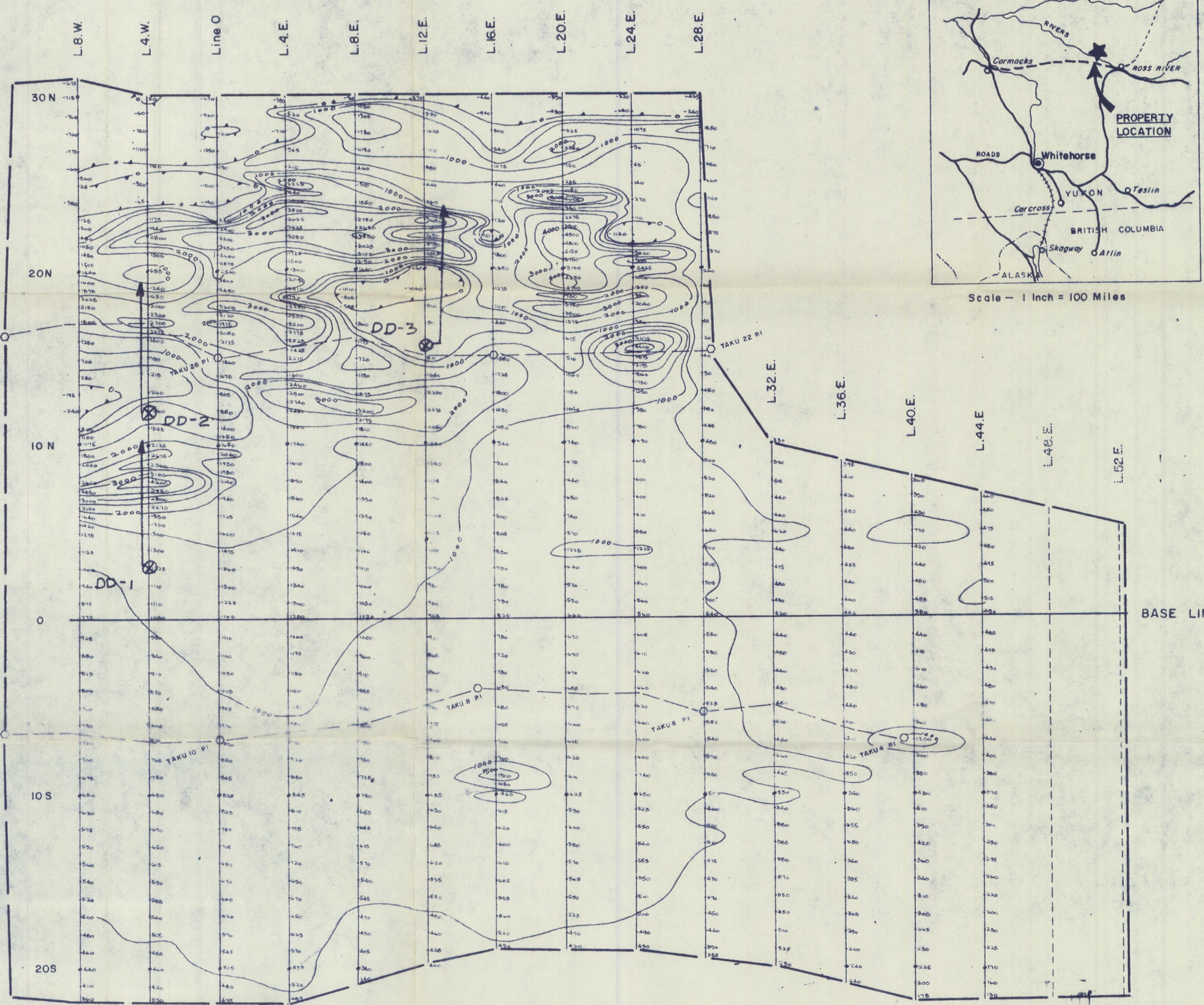
ANVIL DISTRICT, YUKON

- by -

QUEBEC GEOPHYSICS LTD.

NOTE - Results obtained by Hot Acid Extraction
Values represent total copper content
expressed in parts per million (p.p.m.)
X < 10ppm.





Scale - 1 inch = 100 Miles



MAGNETOMETER SURVEY

July 6/67

RICHORE MINES LTD.

ANVIL DISTRICT, YUKON

QUEBEC GEOPHYSICS LTD.

LEGEND.

- ↑ MEASUREMENT STATIONS ALONG PICKET LINES
- ↑300
↓300 RELATIVE VALUES OF THE VERTICAL COMPONENT FORCE OF THE EARTH'S MAGNETIC FIELD (In Gammas)
- 300 MAGNETIC CONTOURS

