

REVIEW OF RESULTS
MAGNETOMETER SURVEY
ON THE JOE CLAIM GROUP
YUKON TERRITORY
ON BEHALF OF
NEW FAR NORTH LIMITED

018976

by

John G. Denholm, M.Sc.

Robbert A. Bosschart, Ph. D., P. Eng.

Toronto, Ontario.

November 28th, 1967.

SEIGEL ASSOCIATES LIMITED

GEOPHYSICAL CONTRACTORS AND CONSULTANTS

79 MARTIN ROSS AVE.
DOWNSVIEW, ONTARIO
CANADA

TELEPHONE 633-2450
636-0801
TELEX 02-29891

A REVIEW OF RESULTS FROM A MAGNETOMETER SURVEY ON THE JOE CLAIM GROUP, YUKON TERRITORY ON BEHALF OF NEW FAR NORTH LIMITED

INTRODUCTION

The present report is a review of a ground magnetometer survey carried out in the summer of 1967 under the direction of Mr. S. Grimaldi, on behalf of New Far North Limited, on the Joe Claim Group in the Yukon Territory. These claims, optioned by New Far North Limited, are located some 120 miles northeast of Whitehorse and are accessible during the summer and winter via the Canol Road as far as the Pelly River.

The present report discusses the magnetometer data from the north-south lines, 20W on B. L. 3 to 16E on B. L. 6, spaced at 400 ft. intervals. A Sharpe MF-1 fluxgate magnetometer was employed and stations were occupied at 100 ft. intervals.

Some geochemical data were supplied to aid in assessing the present magnetometer data.

RESULTS AND CONCLUSIONS

The magnetometer data are presented in contour form on Plate 1, with a plan scale 1" = 400 ft. The contour interval is 400 gammas throughout the plan and 800 gammas in the vicinity of the peak anomalies.

Generally the grid is characterized by low magnetic relief - background reading varying between 1200 and 1600 gammas.

Three regions of moderate magnetic relief are situated in the central portion of the grid. The strongest, with peak values of +4000 gammas and -1200 gammas, is centred on lines 4E at 6S to 16E at 12S from B. L. 5. The anomaly appears to trend in a NW direction and is still open west of line 4E. Another zone of moderate magnetic relief is centred on lines 8W at 8S to 40W at 6S from B. L. 4. The greater portion of this zone is characterized by very modest magnetic activity, 1800 gammas or less. Peak values of 3300 gammas are found on lines 16W at 7S and 20W at 6S from B. L. 4. The third, and least significant, zone of magnetic relief is located on lines 4E and 8E, centred at 13N from B. L. 5.

Moderately high geochemical copper values were obtained in the vicinities of the two most significant zones of magnetic relief, thus suggesting the possibility of intrusives containing some copper sulphides as well as magnetic minerals. The somewhat erratic pattern of the magnetic values in the strongest zone on lines 4E to 16E would suggest that the magnetic material is near surface.

The three above mentioned zones of magnetic relief warrant some further investigation before they might be either discarded or drilled to determine their economic potential. Since graphitic material is prevalent in the area, which would limit the usefulness of electromagnetic methods, gravity traverses are recommended over each of these zones to determine whether they are due to bodies of higher mean density and to aid in spotting drill holes.

Respectfully submitted,

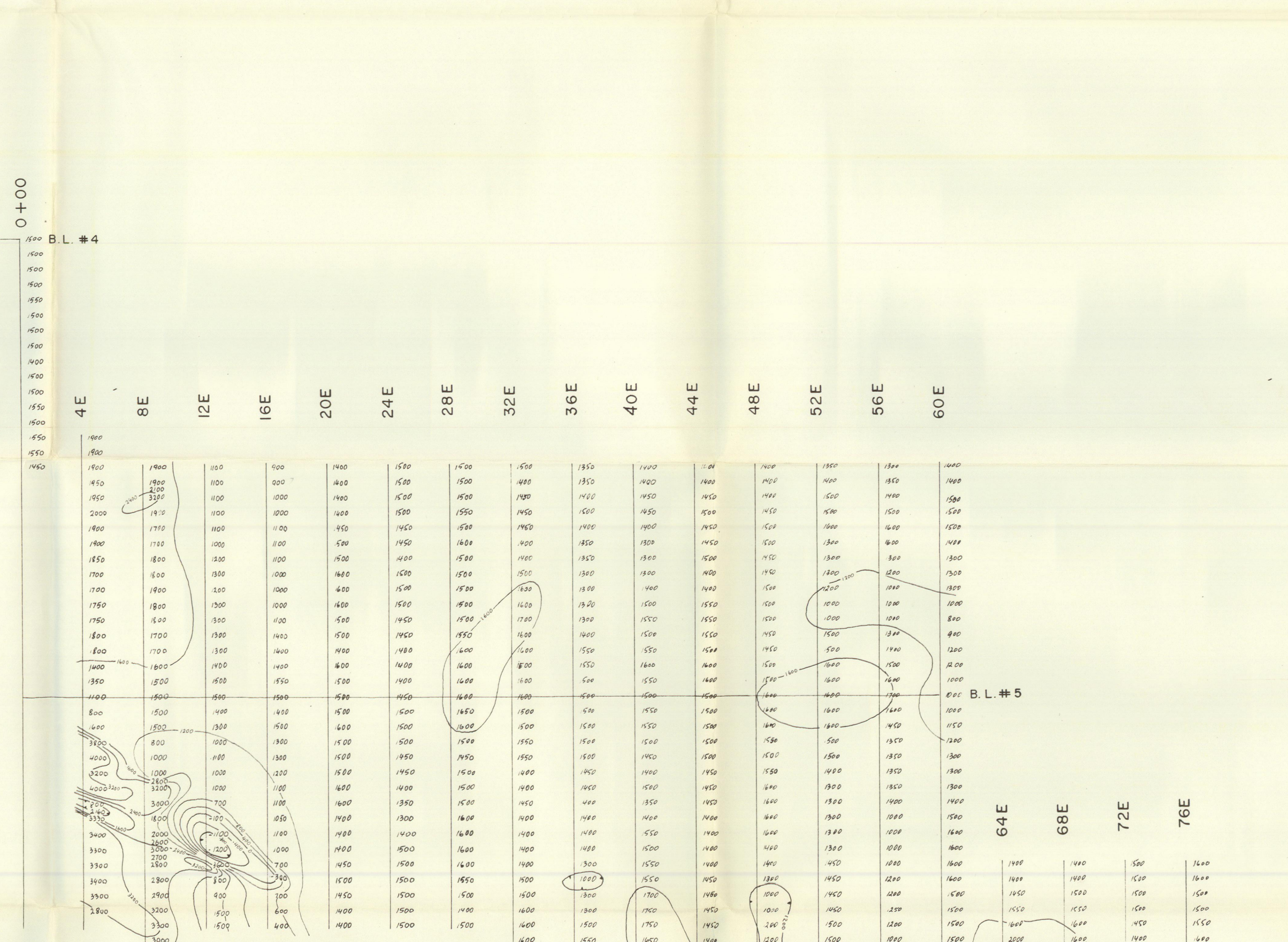
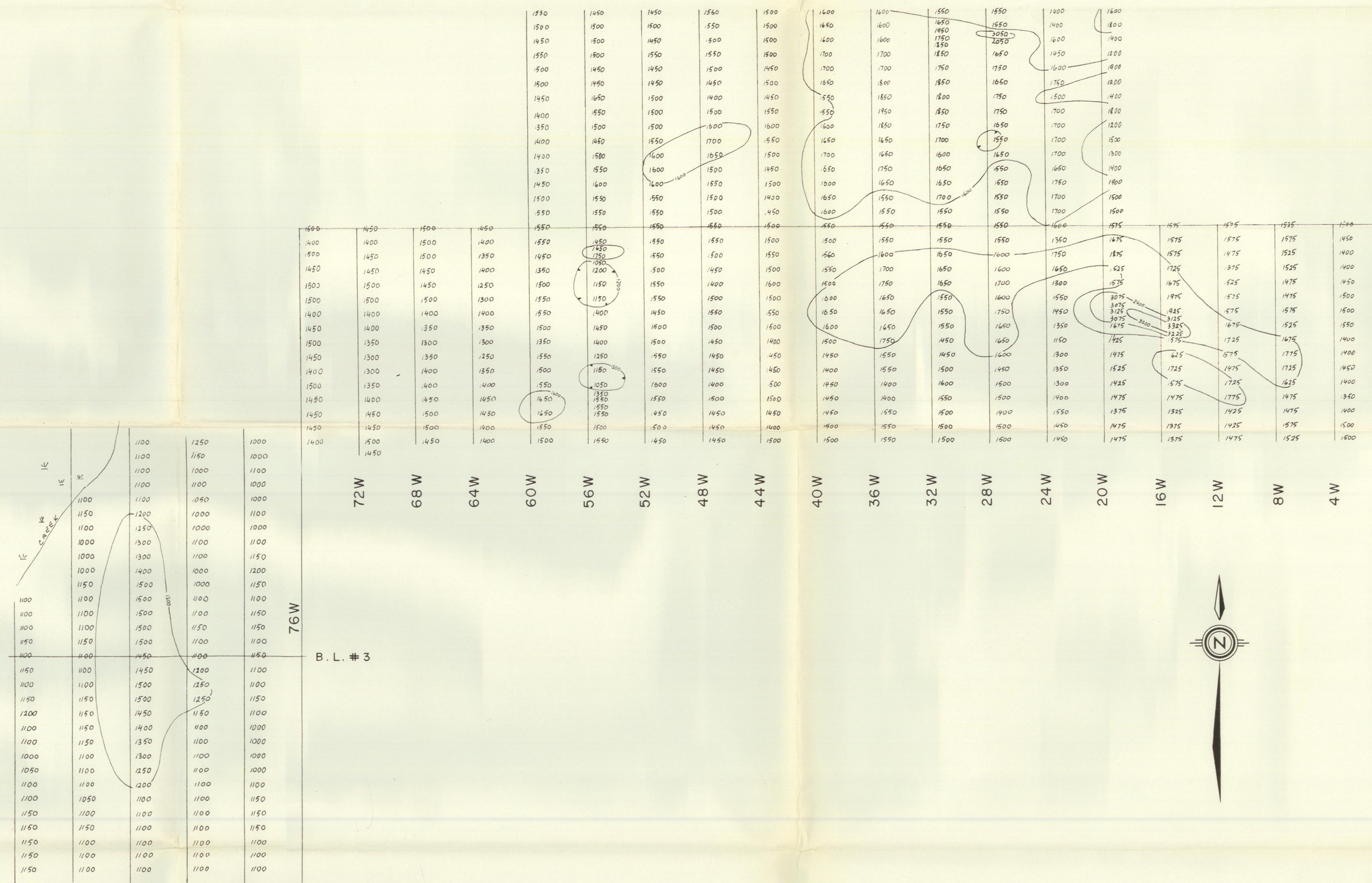


John G. Denhelm, M. Sc.



Robbert A. Bosschart, Ph. D., P. Eng.

Toronto, Ontario.
November 28th, 1967.



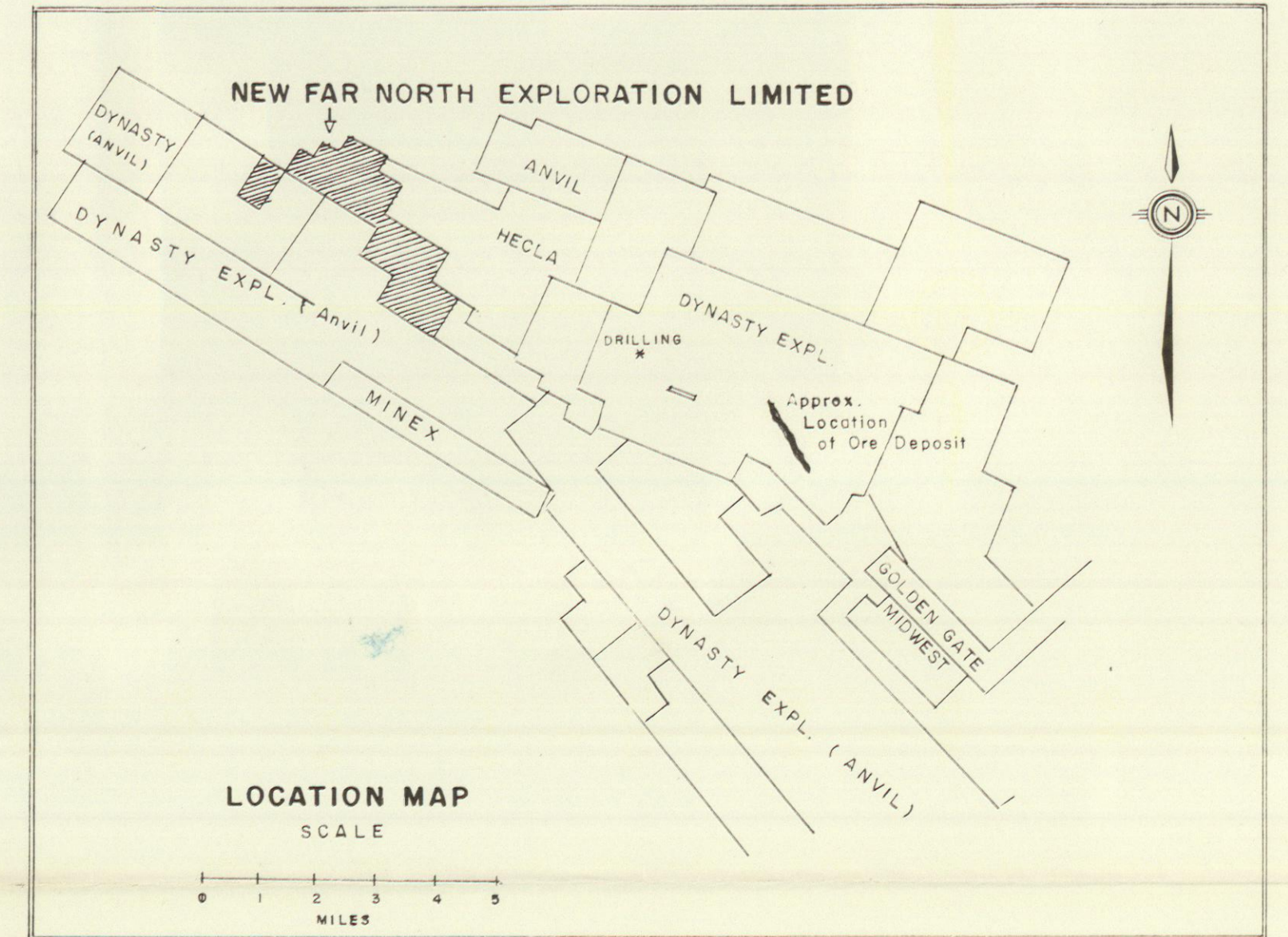
20W
16W
12W
8W
4W

B. L. # 3

B. L. # 4

B. L. # 5

B. L. # 6



LEGEND
isomagnetic contours

NEW FAR NORTH EXPLORATION LIMITED

"JOE" CLAIMS, YUKON TERRITORY
MAGNETIC CONTOUR P. 4N

SCALE: 1" = 400'

REVIEW BY SEIGEL ASSOCIATES LTD.

NOVEMBER 1967