

DYNASTY EXPLORATIONS LIMITED

(N. P. L.)

328 MARINE BUILDING

355 BURRARD STREET

VANCOUVER 1, B. C.

May 14, 1965

Chief Mining Recorder,
Federal Building,
Whitehorse, Y.T.

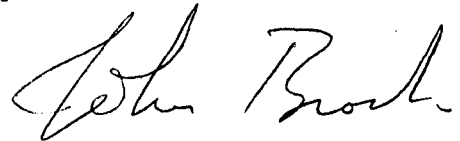
Dear Sir,

Submitted herewith for the purposes of assessment work is the following report "Geophysical Investigations by Magnetic Methods on the Nasty Claim Group".

The total costs incurred for this geophysical survey are to be applied as a portion of the assessment work required to hold the following mineral claims:

Nasty 1,2,9,10,16	for	4 years
Nasty 11-15		5 years
3-8		5 years

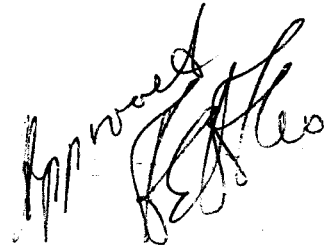
Respectfully submitted,



John S. Brock

JSB/mjm

Enc.



**GEOPHYSICAL INVESTIGATIONS BY
MAGNETIC METHODS ON THE
NASTY CLAIM GROUP**

Location: 132⁰ 40' W. Long.
62⁰ 14' N. Lat.

Reference: Claim Map 105 K2

**WHITEHORSE MINING DIVISION
SWIM LAKES AREA, Y.T.**

By John S. Brock

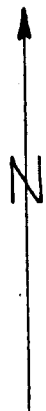
May 1965

TABLE OF CONTENTS

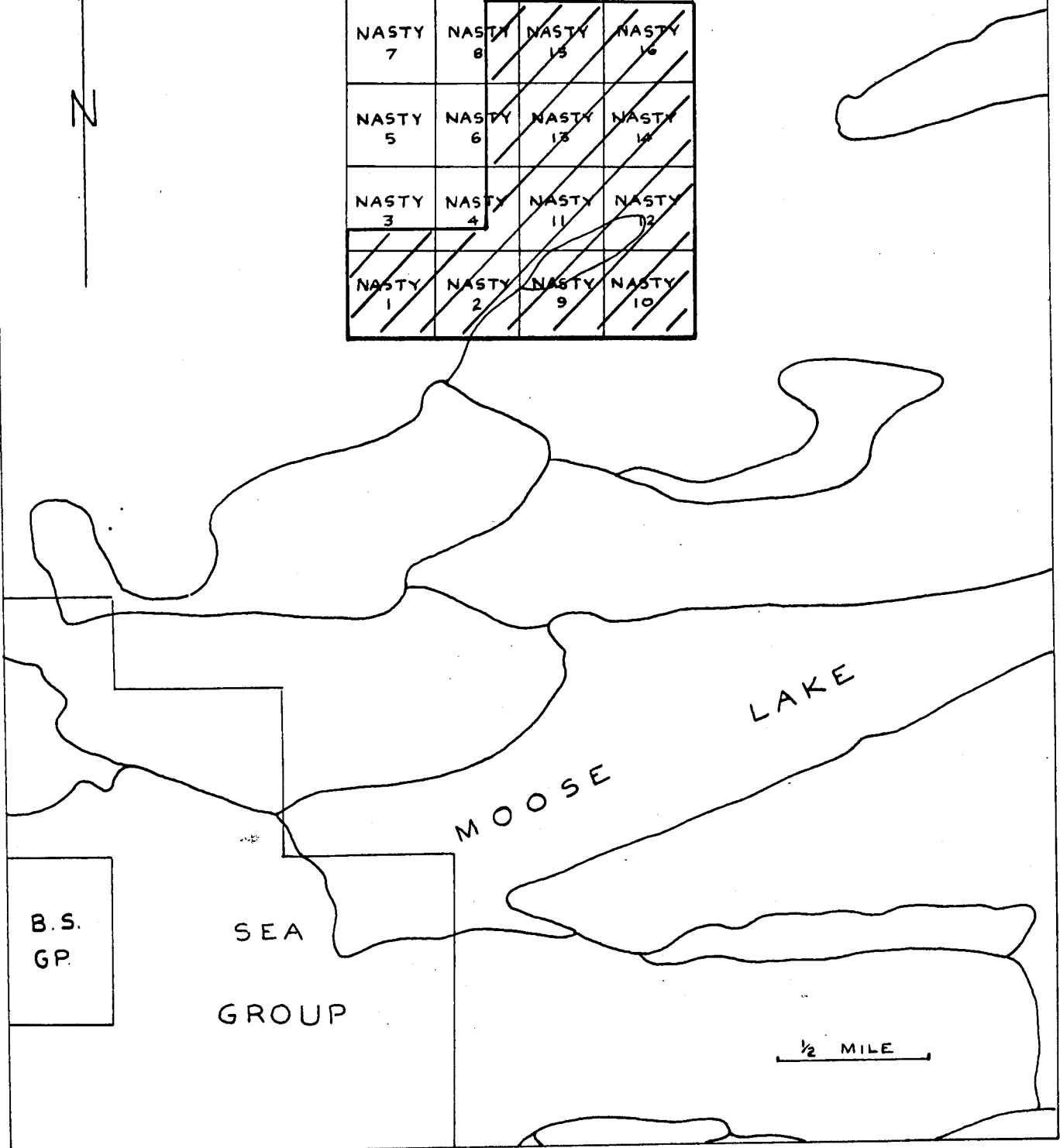
- A. KEY MAP - NASTY GROUP
- B. INTRODUCTION
 - i) General
 - ii) Location and Access

- 1. GEOLOGY
 - METHODS OF SURVEY
 - i) Grid System
 - ii) Magnetometer Survey
- 2. TREATMENT OF DATA
 - INTERPRETATION OF RESULTS
- 3. CONCLUSIONS
 - Appendix 1
 - Appendix 2
 - Appendix 3

NASTY GROUP



NASTY 7	NASTY 8	NASTY 15	NASTY 16
NASTY 5	NASTY 6	NASTY 13	NASTY 14
NASTY 3	NASTY 4	NASTY 11	NASTY 12
NASTY 1	NASTY 2	NASTY 9	NASTY 10



KEY MAP showing Survey Area

INTRODUCTION

General

The Nasty claims were staked by Dynasty Explorations in May 1964. During June 1964 a ground magnetometer survey was run in order to determine the size and magnitude of a reported aeromagnetic anomaly on the claim group. It was hoped that magnetic surveys would prove useful in outlining anomalous zones indicative of sub-surface mineralization as well as geologic conditions masked by overburden. For the ground magnetic survey, a Sharpe A-2 hand held magnetometer, designed for reconnaissance and mining exploration surveys, was used. The instrument is capable of measuring the vertical component of the earth's magnetic field with a sensitivity of approximately 25 gammas per vernier scale division. A subsequent aeromagnetic survey flown by Hunting Survey Corporation under contract to Dynasty Explorations in September 1964, confirmed the location and magnitude of the Nasty Magnetic anomaly.

Location and Access

The Nasty Mineral Claims lie approximately 3 miles northeast of Swim Lake and are located at an elevation of 3500 feet on the southeast slope of a prominent hill which rises to an elevation of 4500 feet. The area surveyed is of moderate and uniform relief, on which is found substantial stands of spruce. Muskeg is characteristic of local topographic depressions and benches.

At the time of survey, access to the property was made by foot from Swim Lake, 130 air miles northeast of Whitehorse. Aircraft equipped with floats are able to land at Swim Lake. During March 1965, an access road was constructed to the claim group from Swim Lake.

GEOLOGY

The Nasty Claim Group is largely covered with overburden and outcrop areas are scarce. The magnetic anomaly lies along strike of an antiform structure plunging gently to the east. The stratigraphic sequence is thought to be composed of sericite schist overlain by greenstone. To the west of the claims, limy sediments dipping to the northwest outcrop and appear to strike northeast through the central regions of the property. Rotary drilling on the magnetic anomaly revealed dark sericite schist in uniform sections. For further geologic information, reference should be made to private reports made to Dynasty Explorations Limited by Fairley (1965).

METHODS OF SURVEY

Grid System

Base and tie lines were cut over the Nasty Claim Group by contracted line cutters from Ross River, Y.T. Survey control was maintained by picket and chain methods with systematic and periodic checks by means of Brunton compass. North-south base lines were cut over the claim group at 0-00E, 30-00W, and 60-00W, one east-west tie line at 30-00N was also cut.

Base stations at 400 foot intervals were established on the base lines. The magnetometer survey was conducted on east-west cross lines located by pace and compass methods with terminal points corresponding to 400 foot base stations on the base lines. Magnetometer readings were taken at 200 foot interval stations.

Magnetometer Survey

All base lines were run with the magnetometer prior to cross lines, each base station was established with a magnetic value corrected for diurnal variation by 'looping' methods. With pre-determined values for the terminal points of each cross line, effective control of diurnal variation may be maintained for each cross-line magnetometer traverse.

TREATMENT OF DATA

All field readings were recorded directly as read from the vernier of the magnetometer. Conversion to gamma values was carried out by means of a 'vernier division-gamma value conversion curve', supplied by Sharpe for use with the particular magnetometer employed during the survey. Values were then corrected for diurnal variation by noting the difference between pre-determined base values and the corresponding terminal station values of each cross line. An absolute background of 50,000 gammas was adopted.

After reductions of data were carried out, all gamma values were plotted on a base map (appendix) in accordance with the station at which they were read. The results were then contoured, using iso-magnetic contours of a 100 gamma interval.

INTERPRETATION OF RESULTS

Rotary drill holes located on magnetic highs failed to intersect sulphide mineralization of economic value. Thick sections of dark, sericite schist underlie the area, and are located in what has been interpreted geologically as an east-west trending fold structure. The generally low grade, dark sericite schist is over 550 feet thick (NRH 3) and in all samples disseminated pyrrhotite was identified.

The magnetic anomalies of the Nasty Claims strike east-west and are located over the axis of the same fold as interpreted by Fairley. It is thought that concentrations of pyrrhotite over at least 500 feet in the crestral regions of this fold would be reflected magnetically as they are brought nearer to surface.

CONCLUSIONS

The cause of the magnetic anomaly as obtained both by airborne and ground magnetometer surveys over the Nasty Claim Group may be explained by the pyrrhotite content in the dark sericite schist. As no cause for the magnetic anomaly is unique, it is felt that a deep rotary drill hole to approximately 700 foot depth, would be warranted in the vicinity of NRH 1.

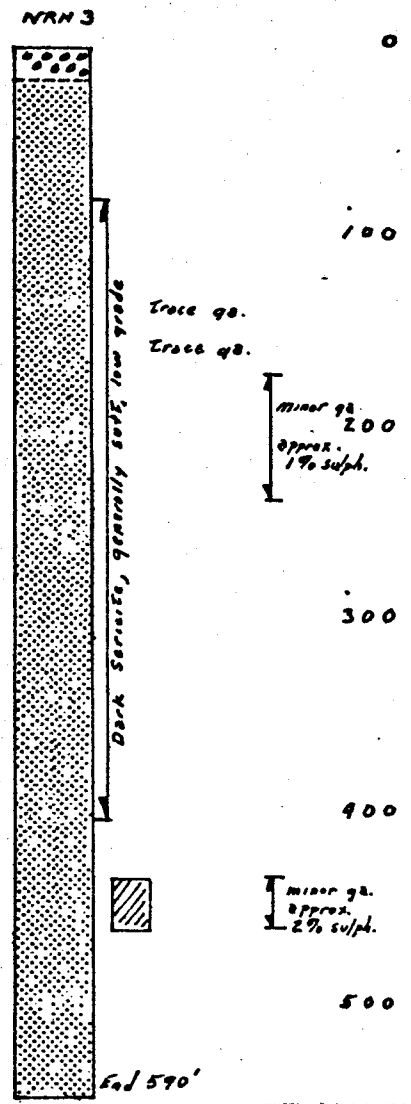
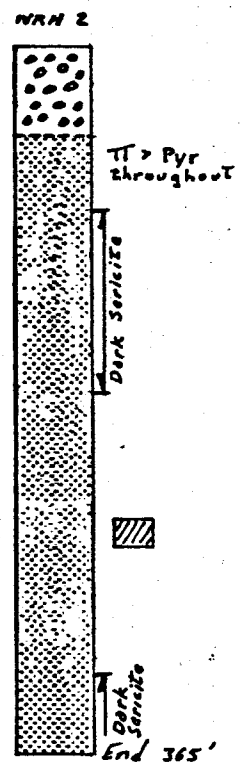
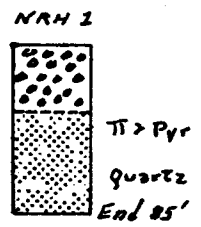
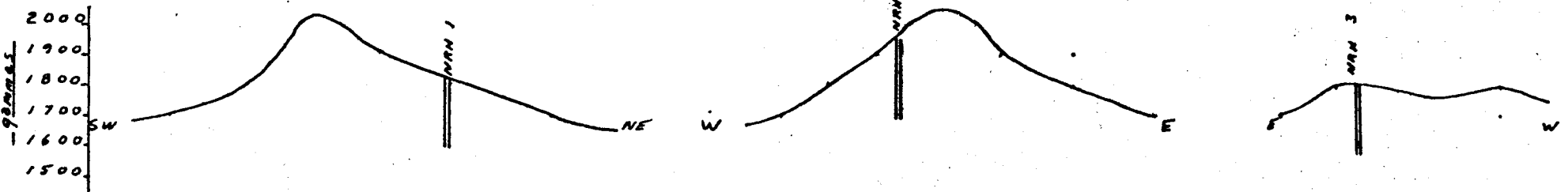
Respectfully submitted,

John Brock
by John S. Brock

*Approved
J. S. Brock*

**GEOPHYSICAL INVESTIGATIONS BY MAGNETIC
METHODS ON THE NASTY CLAIM GROUP**

APPENDIX

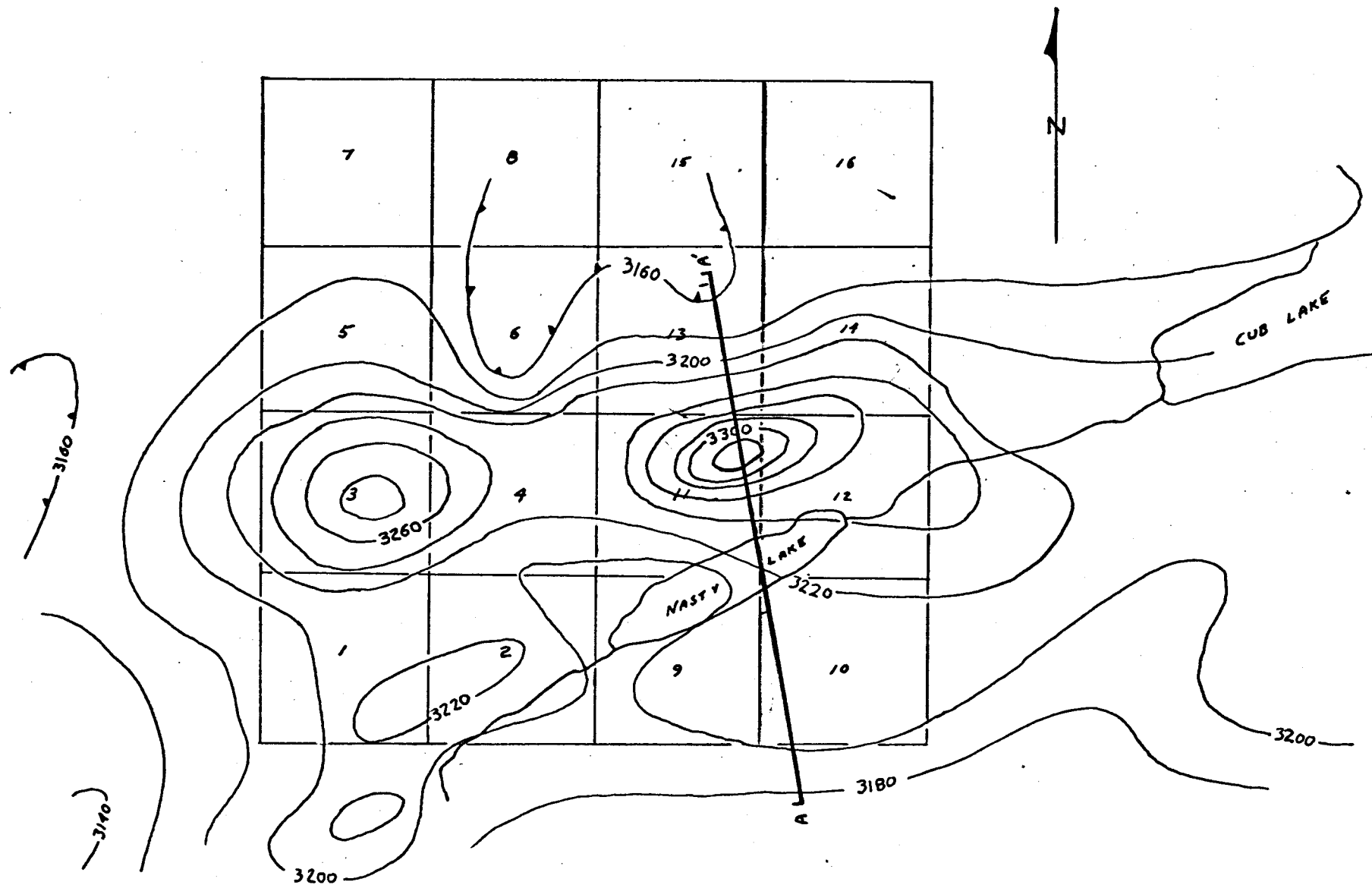


- LEGEND**
- OVERBURDEN
 - SERPENTINE SCHIST
 - 2-5% ESTIMATED SULPHIDE CONTENT
 - TI PYRITE
 - Pyr PYRRHOTITE
 - 98 GALENA

NASTY CLAIM GROUP
ROTARY DRILL HOLE LOGS
AND MAGNETIC PROFILES

AIRBORNE MAGNETOMETER SURVEY
NASTY CLAIM GROUP

Appendix 2



Appendix 3

Personnel

Instrument Operator

Andrew Harman,
Salmo, B.C.

Assistant

William Barclay,
Vancouver, B.C.

Line Cutters

William Peter
Alex Shorty
Robert Etzel
Jimmy Ladue
All of Ross River, Y.T.

Summary of Survey Costs:

Line Cutting	a) Footage - 30,000 feet		
	b) Contract - \$7.00 per 1000 feet		
	Cost:	\$210.00	
	c) Travel Time - 4 men @ \$18/day for two days	144.00	
Magnetometer Survey	a) Operator	\$14.50/day	
	b) Assistant	\$12.50/day	
	c) Time	7 Days	
	Cost:	186.00	
	d) Camp Cost	\$6/day	84.00
	e) Supervision		50.00
f) Final Report		<u>100.00</u>	
	Total Cost	<u>\$774.00</u>	

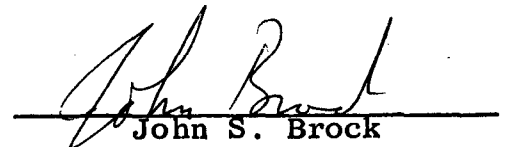
AFFIDAVIT Supporting Statement of Costs

I, JOHN S. BROCK of West Vancouver, British Columbia, have compiled the statements of costs (Geophysical Investigations by Magnetic Methods, Nasty Claim Group).

I make oath and say that to the best of my knowledge and belief, the statement of costs as presented in this report above, is both true and an accurate representation of costs as presented in this report to be applied as a portion of the assessment work on the Nasty Mineral Claim Group.

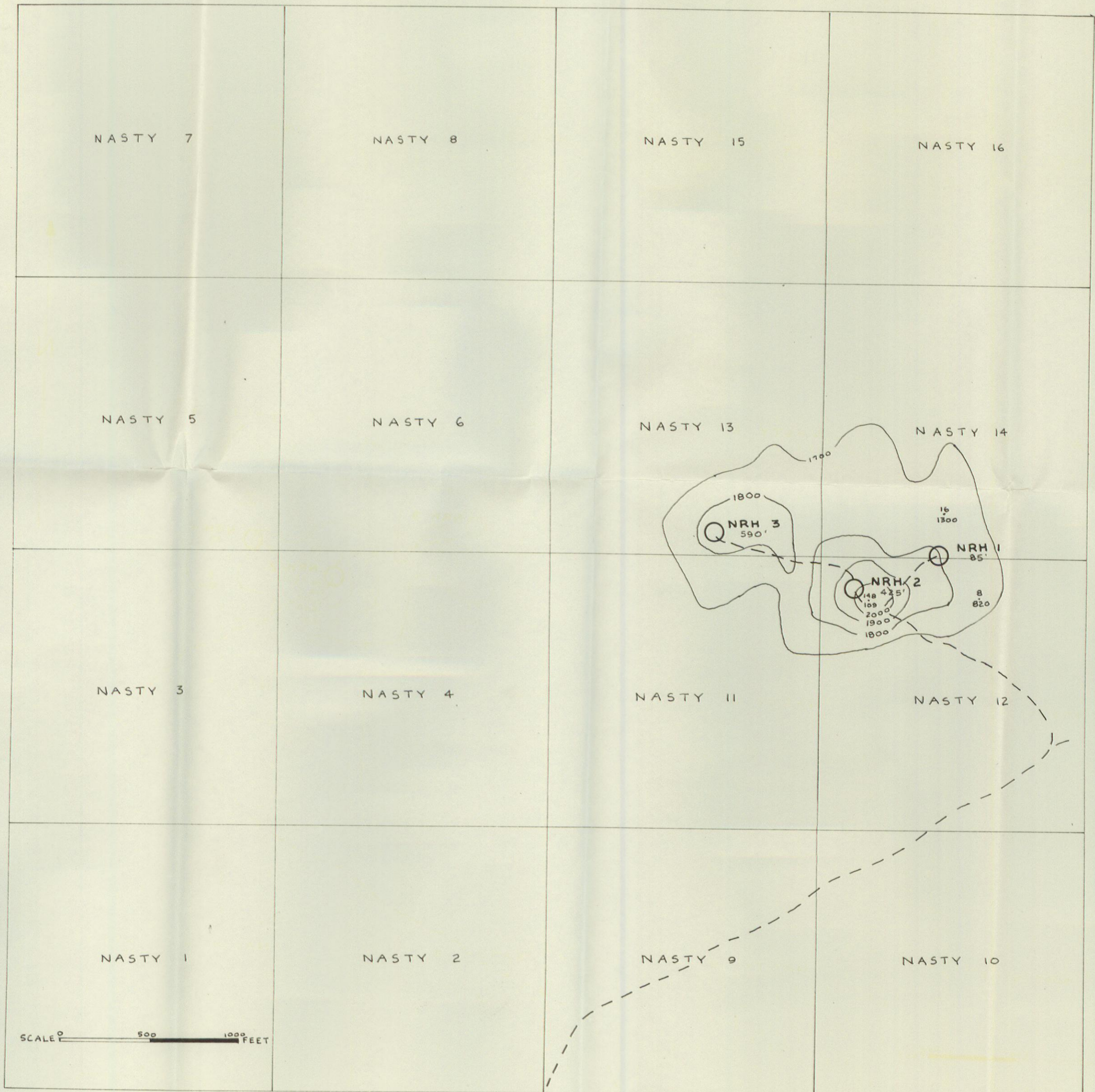
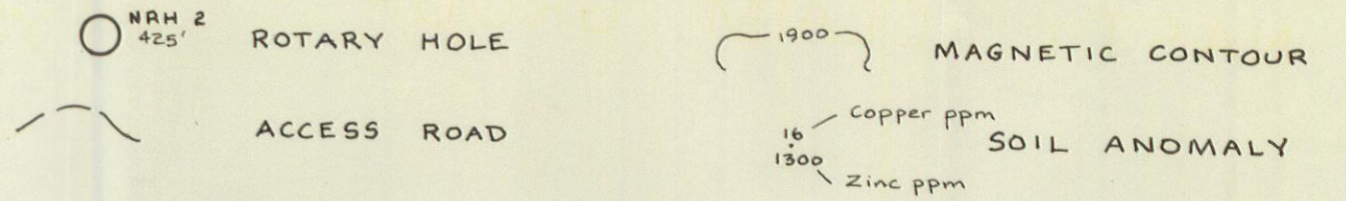


A Commissioner for Taking Affidavits
in and for the Yukon Territory.



John S. Brock

NASTY CLAIM GROUP

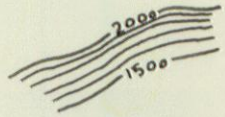


SCALE 0 500 1000 FEET

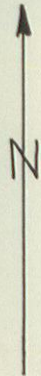
NASTY GROUP

MAGNETOMETER SURVEY

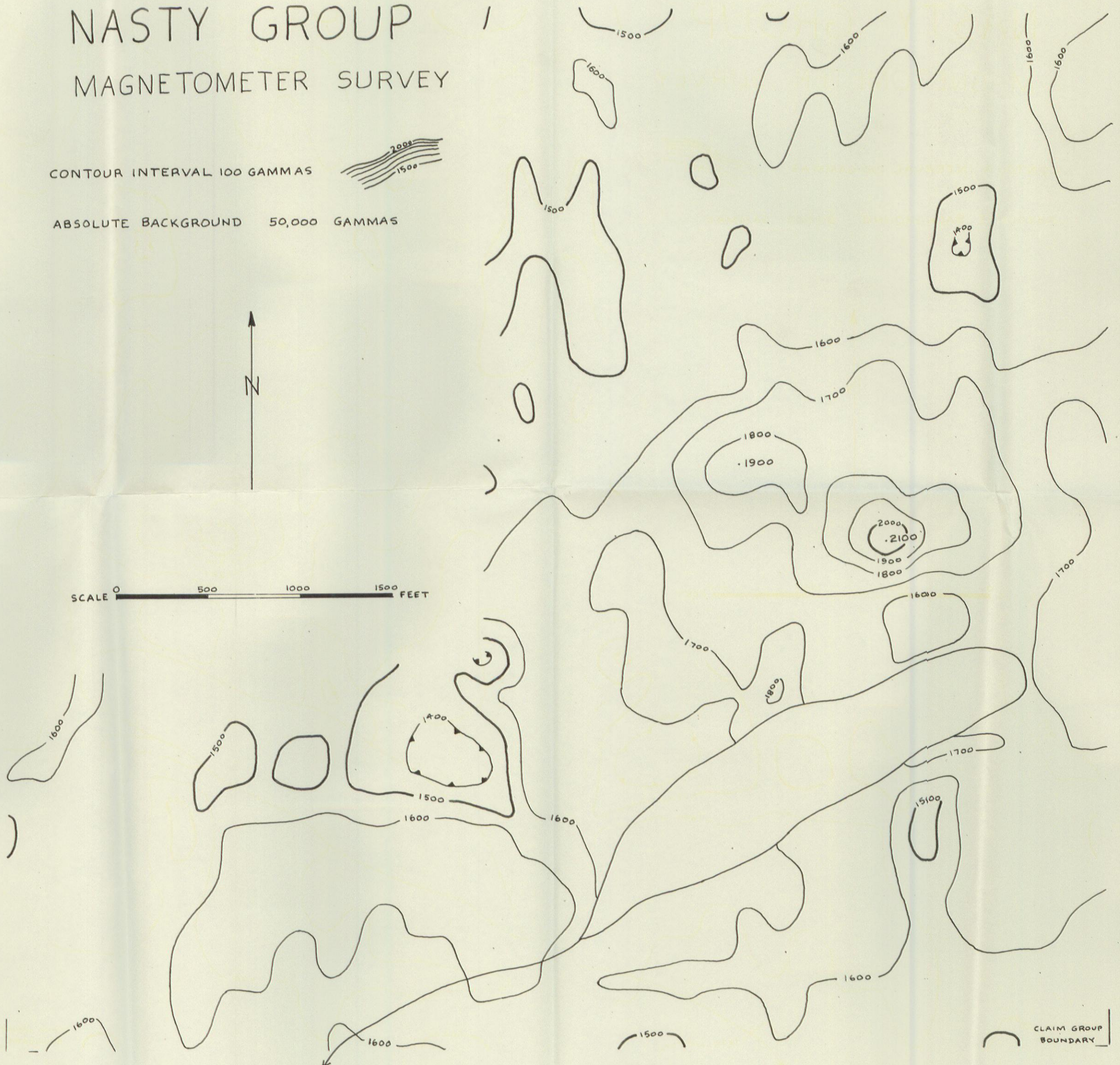
CONTOUR INTERVAL 100 GAMMAS



ABSOLUTE BACKGROUND 50,000 GAMMAS



SCALE 0 500 1000 1500 FEET



CLAIM GROUP
BOUNDARY

R.E.G. DAVIS
FEB. 1965