

REPORT ON A

GEOCHEMICAL SURVEY

ON

THE LAND GROUP,

WHITEHORSE MINING DIVISION, Y.T.



This report has been examined by  
the Geological Evaluation Unit.  
Approved as to technical worth by:

*D. J. Findlay*  
RESIDENT GEOLOGIST

Approved as to cost in the amount  
of \$ 1874.10

*H. S. Pedder*  
RESIDENT MINING ENGINEER

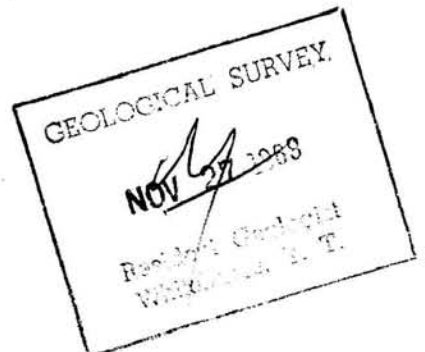
Accepted as representation work  
under Section 53(4) Yukon Quartz  
Mining Act.

*James Smith*  
COMMISSIONER OF YUKON

AGILIS EXPLORATION SERVICES LTD.

JUNE 29, 1968

017948



## TABLE OF CONTENTS

	Page
INTRODUCTION. . . . .	1
LOCATION AND ACCESS . . . . .	1
CLAIMS. . . . .	2
GEOLOGY . . . . .	2
GEOCHEMICAL SURVEY. . . . .	2
Field Procedure. . . . .	2
RESULTS OF SURVEY . . . . .	3
CONCLUSIONS . . . . .	3
TIME AND COST DISTRIBUTION. . . . .	5

### Maps

### Scale

Index Map	1 inch = 20 miles
Reconnaissance Geochemical Survey	1 inch = 500 feet
Detail Geochemical Survey	1 inch = 200 feet

REPORT ON A  
GEOCHEMICAL SURVEY  
ON  
THE LAND GROUP,  
WHITEHORSE MINING DIVISION, Y.T.

INTRODUCTION:

& The Land Group, consisting of 16 contiguous mineral claims, lies approximately 73 miles west-northwest of Whitehorse, Y. T.

The claims were staked following preliminary prospecting in the area of an aeromagnetic anomaly. As on the Kirk Group to the southeast, reconnaissance dip needle and geochemical surveys were carried out over much of the claim group. These indicated anomalous areas over which a detailed geochemical survey was later conducted.

LOCATION AND ACCESS:

The claims lie west of Kirkland Creek, immediately northwest of the Kirk Group, approximately 73 miles west-northwest of Whitehorse, Y. T. Coordinates are  $61^{\circ} 33'$  north latitude,  $136^{\circ} 30'$  west longitude.

Access during the past summer was by helicopter operating out of Whitehorse. A single camp, situated on Kirkland Creek was used to service both the Kirk and Land Groups.

CLAIMS:

The following 16 contiguous mineral claims situated in the Whitehorse Mining District form the Land Group.

Land 1 - 8	Record No.'s	Y 18966 - 73 incl.
Land 9 - 16	Record No.'s	Y 20258 - 65 incl.

GEOLOGY:

The claims lie along the eastern flank of the Coast Intrusions, where volcanics and sediments of Palaeozoic and/or Mesozoic Age are in contact with acid to intermediate intrusives of probable Jurassic Age.

Overburden is extensive within the claims area, and outcrop was noted only in the northwest and southwest portions of the property. This consists of a light-grey, medium to coarse-grained hornblende granodiorite, and was found on claims 3, 4, 9, 10 and 11. Magnetite is present in variable amounts in most of this rock. The aeromagnetic high is probably indicative of this intrusive body.

GEOCHEMICAL SURVEY:

Field Procedures:

During the initial reconnaissance survey samples were taken at 300 foot intervals along claim lines and random lines crossing the property, then on lines spaced 300 feet apart in selected areas, with a total of approximately 12 line-miles sampled. Lines were run by pace and compass and samples collected with a small pick, at a maximum depth of 12 inches.

Samples from this survey were tested in the field using the dithizone method for total heavy metals, with arbitrary values assigned to anomalous samples.

A more detailed survey was later carried

out over approximately 3.6 line-miles in the anomalous areas. Samples were collected at 100 foot intervals on lines spaced 400 feet apart. Samples were taken with an auger, wherever possible from the soil horizon immediately below the humous layer, and excluding volcanic ash. All lines were run by chain and compass and sample locations marked in the field.

Samples were sent to Vancouver and tested for total copper content by hot acid extraction by T.S.L. Laboratories Ltd. In this case copper values are reported in parts per million (ppm). Due to the cost of access to the area by helicopter, and the frequency of service trips, the reconnaissance survey was conducted prior to recording of the claims.

#### RESULTS OF THE SURVEYS:

The reconnaissance survey for total heavy metals partially outlined a series of anomalous conditions in an area of 6 claims in the northern and western part of the property, corresponding in general with the area of higher magnetic values.

Results of the more detailed survey showed background to be approximately 30 ppm copper.

No strongly anomalous conditions exist, although a weakly anomalous area with values approximately  $1\frac{1}{2}$  - 2 times background occurs in the central portion of the group on claims Land 12 and 14. No outcrop was noted in the anomalous area which measures 1600 feet long by 200 - 300 feet wide.

High readings along line 2W in the eastern edge of the area sampled coincide with a swampy section of ground.

#### CONCLUSIONS:

No outcrop or mineralization was noted in the anomalous areas to account for the higher copper values. It is possible that andesitic volcanics,

similar to those occurring to the east and carrying minor copper values, extend onto the Land claims, in which case this would account for the weakly anomalous readings.

Respectfully Submitted,

A handwritten signature in dark ink, appearing to read 'R. H. D. Philp', written in a cursive style.

R. H. D. Philp, P. Eng.

AGILIS EXPLORATION SERVICES LTD.

TIME AND COST DISTRIBUTION

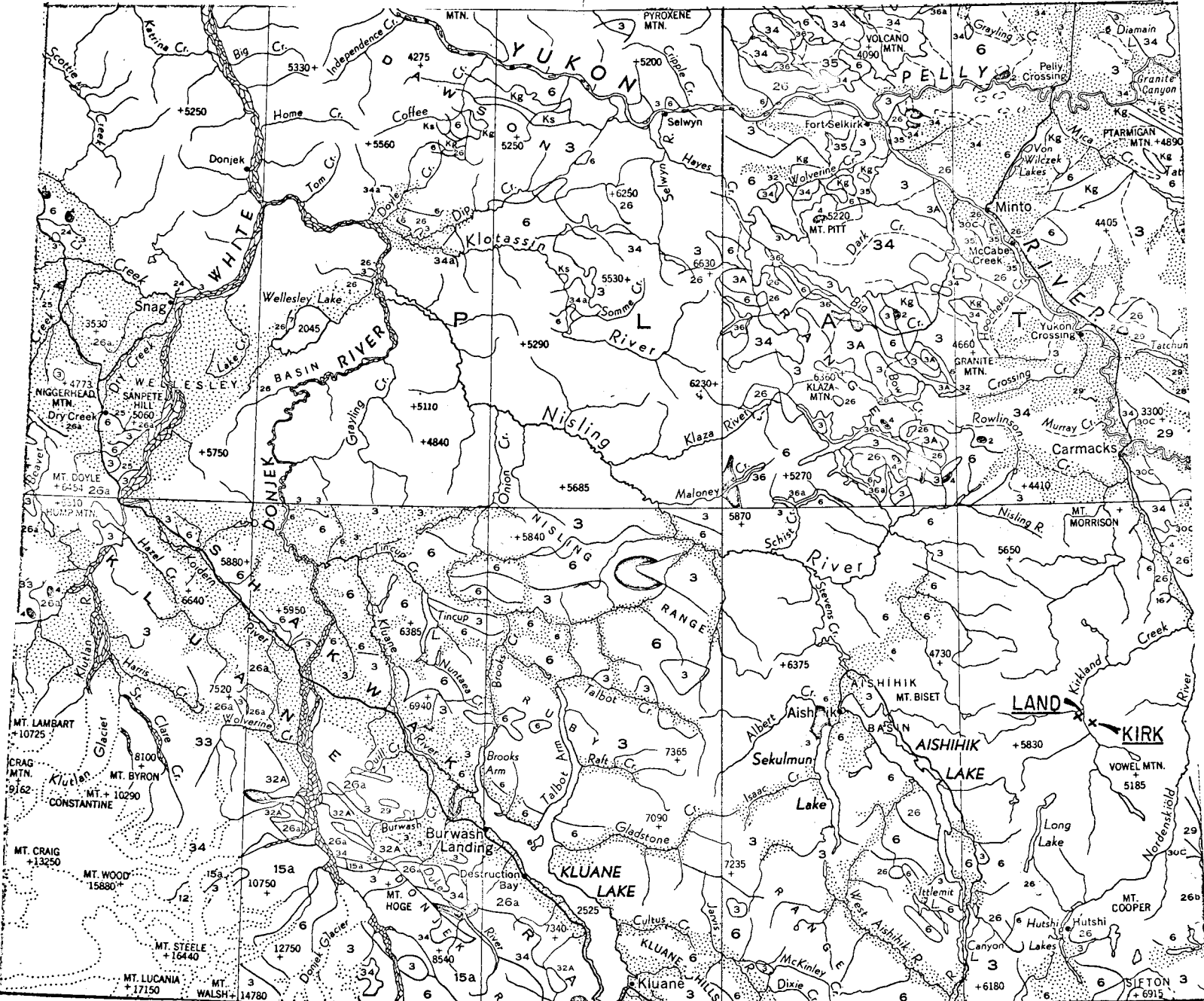
Reconnaissance Surveys - Kirk and Land Groups  
(June 20 - July 4, 1967)

Personnel - D. Reinke 15 days @ \$27.77/day	\$409.05
C. Nelson 15 days @ \$27.77/day	409.05
Helicopter - Coast Range Airways	831.00
Camp costs, groceries, etc. \$7.50/man/day	<u>225.00</u>
	<u>\$1874.10</u>

Detailed surveys - Kirk and Land Groups  
(Sept. 15 - 25, 1967)

Personnel - R. Philp - Sept. 15 - 25 incl. 10 days @ \$100.00/day	\$1000.00
C. Nelson - Sept. 15-25 incl. 11 days @ \$27.77/day	299.97
Helicopter costs	809.00
Camp costs, groceries, supplies \$7.50/man/day	<u>165.00</u>
	<u>\$2273.97</u>
Total costs	<u>\$4148.07</u>

Surveys carried out on two groups concurrently  
and costs to be distributed equally between them.

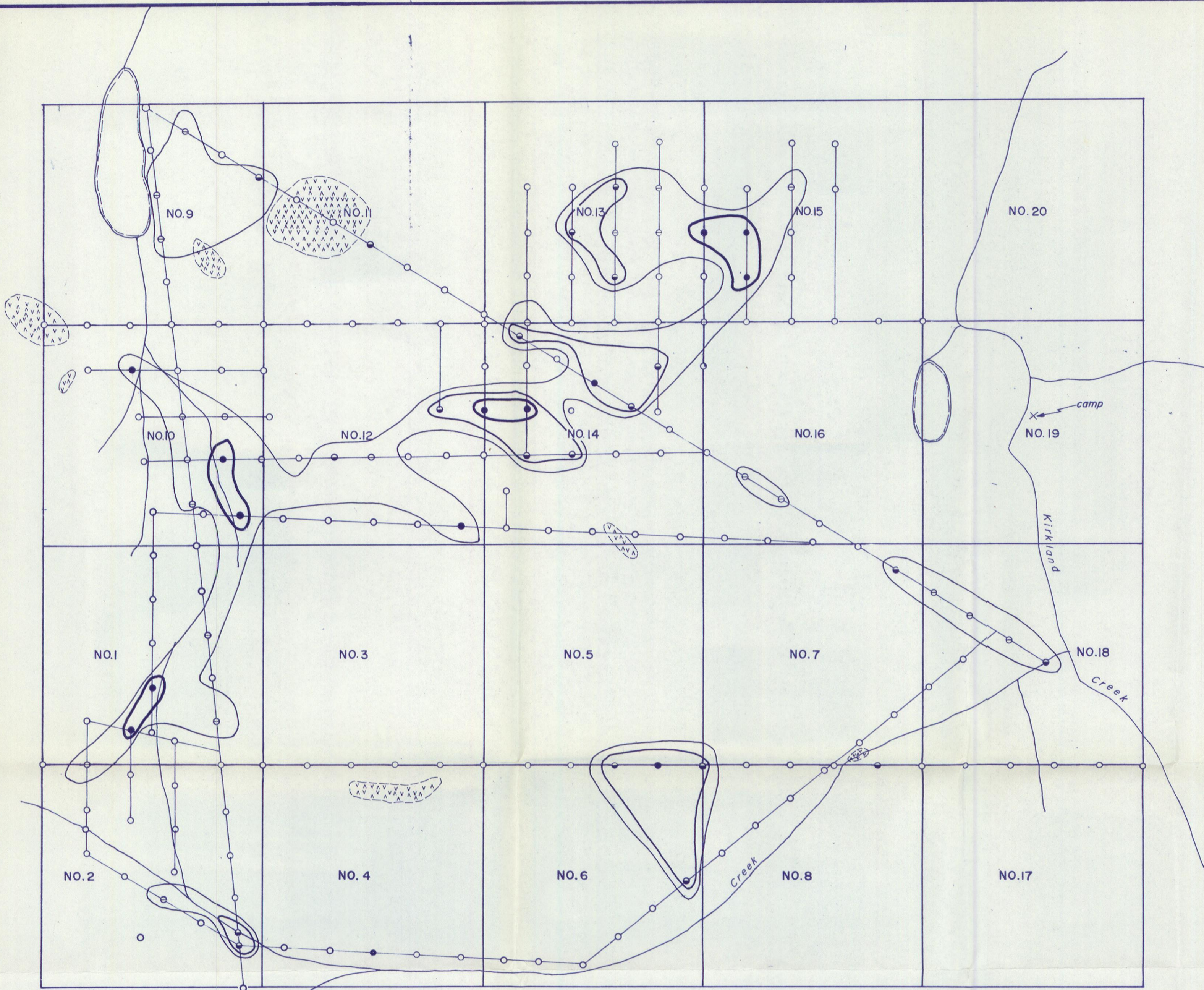


Index Map

KIRK & LAND GROUPS

1" = 20 miles

RR



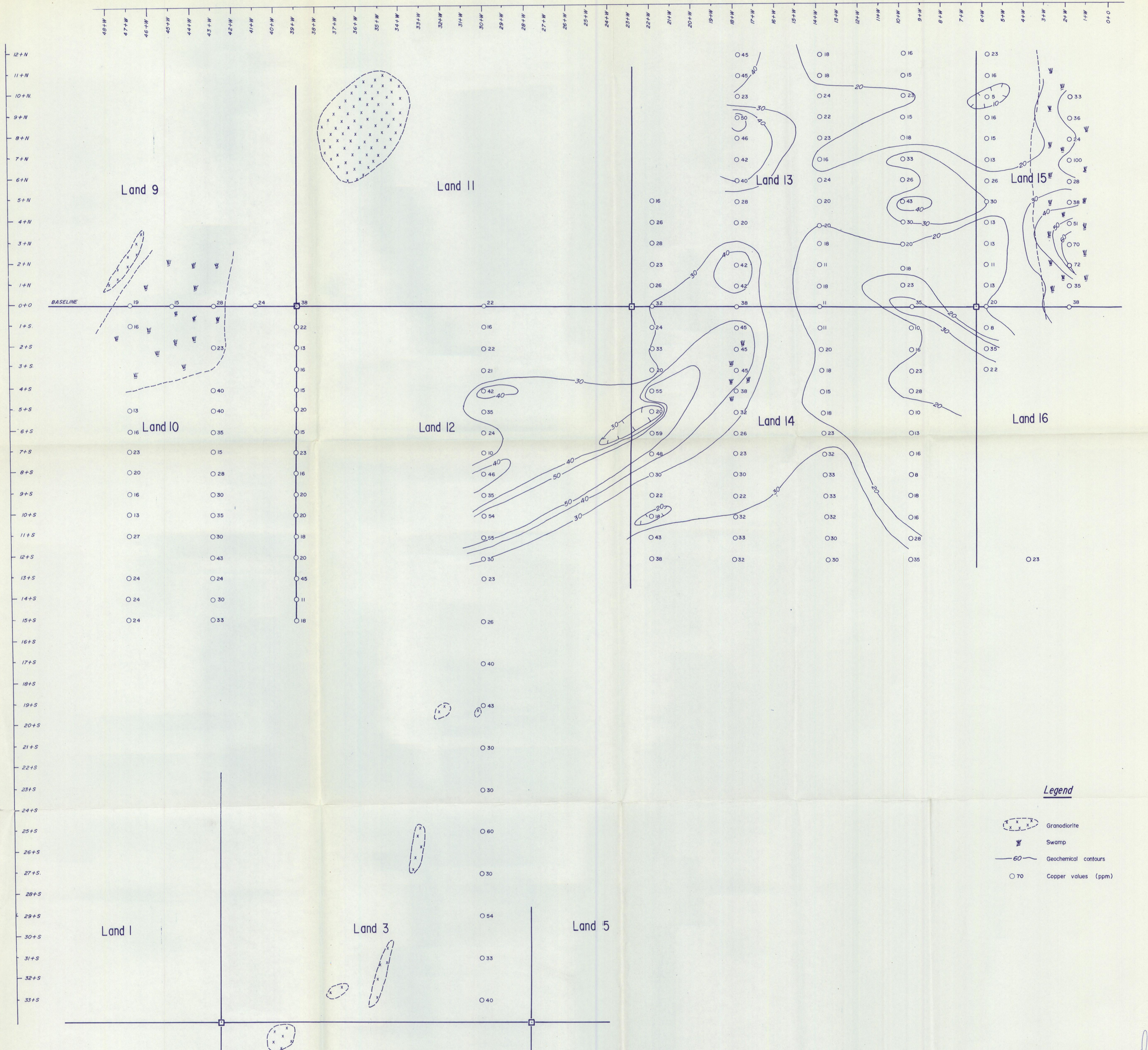
**LEGEND**

- SOIL SAMPLES
- Nil
- ⊖ Low
- ⊙ Medium
- High
- Soil Anomaly
- ⊖ Monzonite

**N.B.** Contours related to T.H.M. values.  
 Sample tested in field for T.H.M. by DITHIZONE METHOD.

AGILIS EXPLORATION SERVICES LTD.	
<b>AISHIHK SYNDICATE</b>	
LAND CLAIM GROUP	
<b>GEOCHEMICAL SURVEY</b>	
DRAWN : K. K.	SCALE : 1" = 500'
CHECKED :	DATE : OCTOBER, 1967

*Handwritten initials*



**Legend**

- Granodiorite
- Swamp
- Geochemical contours
- Copper values (ppm)

AGILIS EXPLORATION SERVICES LTD	
<b>AISHIHK SYNDICATE</b>	
LAND CLAIM GROUP	
<b>DETAIL GEOCHEMICAL SURVEY</b>	
DRAWN : K.K	SCALE : 1" = 200'
CHECKED :	DATE : JANUARY, 1968