



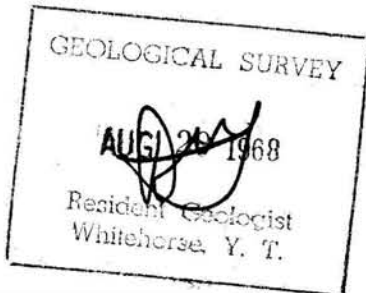
GLACIER EXPLORATION CORPORATION

REPORT OF ASSESSMENT WORK

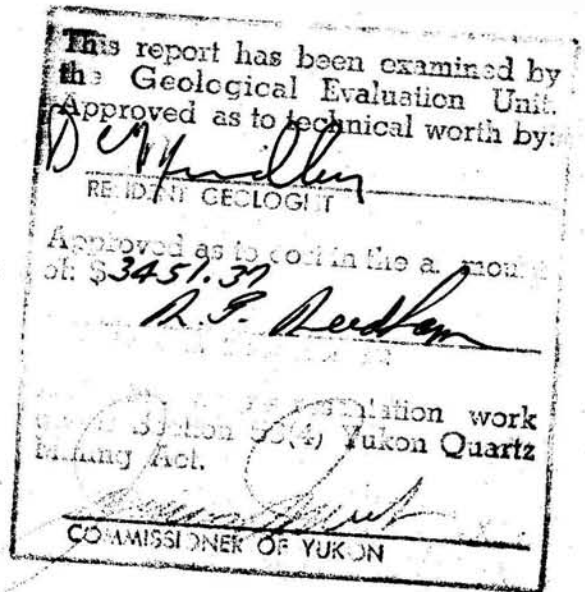
ON

ROX, PORT, AND BEAVER CLAIMS

SNAG JUNCTION, YUKON



3451.37



APRIL, 1968

J. B. P. Sawyer

D. W. Tully, P. Eng.

TABLE OF CONTENTS

	Page
Introduction	1
Property	1
Location	1
Work Performed	1
Results	2
Conclusions	2
Report on E.M. Check Work by Ross Kidd	
Introduction	5
Summary of Results	5
Discussion of Results	6
Conclusions	8
Recommendations	8
Statement of Expenditures	9

ILLUSTRATIONS

1. Location Sketch - Rox, Port, Beaver Claims Group
1" = 20 miles - in back folder
2. Ronka E.M. 16 Results, 1" = 1,000 ft. - in back folder

GLACIER EXPLORATION CORPORATION

REPORT OF ASSESSMENT WORK

ROX, PORT, AND BEAVER CLAIMS

SNAG AREA, YUKON

INTRODUCTION

The existence of airborne magnetic anomalies in the area of Snag Junction near Mile 1186 on the Alaska Highway has been known since 1953. A total of thirty-four claims, staked by P.H. Sevensma, P. Versluce and Associates, cover the most prominent parts of these magnetic features.

The work here reported for assessment credit was carried out in November 1967 under the terms of a joint venture agreement dated August 17, 1967, between P.H. Sevensma and Associates, and Glacier Exploration Corporation, a wholly owned subsidiary of Cyprus Mines Corporation.

PROPERTY

The property consists of a total of thirty-four claims described as follows:

Rox 1 to 16 inclusive, Grant Nos. Y20242 to Y20257 inclusive;

Port 1 to 16 inclusive, Grant Nos. Y20226 to Y20241 inclusive;

Beaver numbers 14 and 16, Grant Nos. Y8546, Y8545.

LOCATION

The claims lie on either side of the Snag cut-off at Mile 1185.5 on the Alaska Highway. The Beaver and Rox Claims lie to the east of the Highway. These are shown on claim map No. 115 K/2, 115 K/7.

WORK PERFORMED

The work carried out by Glacier Exploration was designed to test the electrical conductivity of the area in which the magnetic highs occur,

and consisted of an E.M. survey carried out by Mr. Ross Kidd, Mining Engineer, of Vancouver, B.C. The equipment used was a Ronka E.M. 16 unit.

Control for the geophysical work was established by chaining traverse lines, and base lines, into the claim lines. The work of locating claim posts and setting up this control was carried out by C.A. Langlois, prospector for Cyprus Exploration Corporation, and an assistant, P. Grant.

Access to the claims was in part by skidoo from the Highway and in part by helicopter from White River. The helicopter was chartered from Trans North Turbo Air Limited.

RESULTS

The results of this work are described in a report by Ross Kidd, dated December 15, 1967, a copy of which, in its entirety, is included with this Assessment Report.

These results may be summarized as follows:

a. Port Claims

No conductors were found;

b. Rox and Beaver Claims

Three long, but weak, parallel conductors were found.

These are considered to be due to changes in under-lying

bedrock rather than to concentrations of sulphides.

CONCLUSIONS

While the heavy cover of overburden in the immediate area of the subject claim groups undoubtedly serves to dampen any geophysical responses of the underlying formations, the results of the Ronka E.M. 16 survey indicate that the probability of the existence of economically exploitable

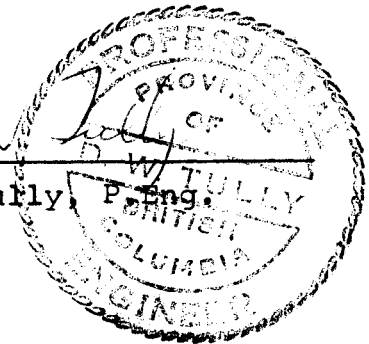
deposits of base metal sulphides in this area is not high. In view of this, and in the absence of any positive evidence to the contrary, further expenditure on this project is not warranted.

Respectfully Submitted,

J. B. P. Sawyer
J. B. P. Sawyer.

Donald W. Tully

Donald W. Tully, P. Eng.



REPORT ON
ELECTROMAGNETIC CHECK WORK
SEVENSMA OPTION

CYPRUS EXPLORATION CORPORATION LIMITED

SNAG AREA WESTERN YUKON

VANCOUVER, B.C.
DECEMBER 15TH, 1967

ROSS KIDD

ING ENGINEER

INTRODUCTION

THE SEVENSMA CLAIMS ARE SPLIT INTO TWO GROUPS WHICH LIE ABOUT 3 MILES APART. THE WESTERLY GROUP IS MADE UP OF THE BEAVER AND ROX CLAIMS (18 CLAIMS IN ALL), AND THE EASTERLY GROUP IS MADE UP OF 16 PORT CLAIMS.

THE TWO GROUPS ARE LOCATED ON EITHER SIDE OF THE SNAG TURNOFF AT MILEAGE 1188½ ON THE ALASKA HIGHWAY, AS SHOWN ON THE ACCOMPANYING MAP.

THE TWO CLAIM GROUPS COVER MAGNETIC ANOMALIES. P. H. SEVENSMA CONSULTANTS LTD. HAVE CONDUCTED GROUND MAGNETIC SURVEYS ON THE CLAIMS, AND THEIR MAGNETIC CONTOURS ARE ALSO SHOWN ON THE ACCOMPANYING MAP.

AT THE REQUEST OF MR. D. W. TULLY, MANAGER OF EXPLORATION - CANADA FOR CYPRUS MINES CORPORATION, I HAVE CHECKED THE MAGNETIC ANOMALIES FOR CONDUCTIVITY, THE OBJECT BEING TO LEARN WHETHER THE MAGNETIC HIGHS MIGHT BE CAUSED BY PYRRHOTITIC SULFIDES CARRYING BASE METALS.

THE RESULTS ARE SHOWN ON THE MAP AND DESCRIBED IN THE FOLLOWING SUMMARY OF RESULTS.

SUMMARY OF RESULTS

NO STRONG CONDUCTORS WERE FOUND IN ASSOCIATION WITH THE MAGNETIC HIGHS.

THREE WEAK PARALLEL CONDUCTORS WERE TRACED ALONG THE WESTERLY MAGNETIC ANOMALY (BEAVER AND ROX CLAIMS). TWO OF THESE PARALLEL FEATURES ARE THOUGHT

SUMMARY OF RESULTS (CONT'D)

TO REPRESENT THE TWO CONTACTS OF THE BASIC ROCK WHICH IS CAUSING THE MAGNETIC HIGH. THE OTHER CONDUCTOR APPEARS TO BE DUE TO ANOTHER SHARP ROCK CONTACT SOUTH OF THE MAGNETIC HIGH.

NO CONDUCTIVITY WAS FOUND IN ASSOCIATION WITH THE MAGNETIC HIGHS COVERED BY THE PORT CLAIMS.

THE MAGNETIC RESULTS SUGGEST THAT OVERBURDEN DEPTHS RANGE FROM 75 FEET TO 500 FEET OVER THE ANOMALOUS AREAS, WITH AN AVERAGE OF MORE THAN 100 FEET OVER THE WESTERLY ANOMALY, AND MORE THAN 200 FEET OVER THE EASTERLY ANOMALIES.

FOR THIS REASON, A DEEP-PENETRATION ELECTRO-MAGNETIC METHOD WAS USED TO SEARCH FOR CONDUCTIVITY. RONKA EM 10 EQUIPMENT, HAVING A PENETRATION OF AT LEAST 500 FEET, AND WITH VERY HIGH SENSITIVITY, WAS USED.

DISCUSSION OF RESULTS

THE TWO CONDUCTORS IN CLOSE CORRELATION WITH THE WESTERLY MAGNETIC HIGH MIGHT BE CONSIDERED AS SULFIDE CONDUCTORS. IT IS THOUGHT THAT THEY ARE NOT, HOWEVER, FOR THE FOLLOWING REASONS:

- (A) THEY ARE VERY WEAK. WHILE THE 100 FEET OR MORE OF OVERBURDEN COVERING CERTAINLY HAS A DAMPENING EFFECT ON THE CONDUCTIVITY RESPONSE,

DISCUSSION OF RESULTS (CONT'D)

THIS IS LARGELY OVERCOME BY THE GREAT DEPTH PENETRATION AND ALSO BY THE HIGH SENSITIVITY OF THE RONKA EM 16 EQUIPMENT. THE RESPONSES ARE VERY MUCH LIKE THOSE USUALLY FOUND AT THE CONTACTS OF INTRUSIVE DIKES OR SILLS.

(B) THEIR POSITIONING. THE TWO CONDUCTORS ARE LOCATED JUST ABOUT AT THE EDGES OF THE BODY CAUSING THE MAGNETIC HIGH, IN OTHER WORDS JUST ABOUT WHERE THEY SHOULD BE IF THEY ARE CAUSED BY THE WEAKLY CONDUCTIVE CONTACTS OF THE BODY.

(C) THEIR LENGTH. THE MAGNETIC ANOMALY AND ASSOCIATED CONDUCTIVITY HAS BEEN TRACED FOR 2 MILES OF LENGTH, AND IS STILL CONTINUING TO THE WEST. THIS ORDER OF STRIKE LENGTH IS MUCH MORE COMMON IN INTRUSIVES THAN IT IS IN SULFIDE BODIES.

THE THIRD WEAK CONDUCTOR IN THE WESTERLY AREA, WHILE WEAK, IS A BIT STRONGER AND MORE DEFINITE THAN THE OTHER TWO. IT LOOK MUCH LIKE A ROCK CONTACT CONDUCTOR, BUT IT MAY HAVE SHEARING ASSOCIATED WITH IT AS WELL, AND AS SUCH MAY REPRESENT A THROUGH-GOING FORMATIONAL FAULT, ESPECIALLY SINCE IT IS SO STRAIGHT.

NO CONDUCTIVITY WAS INDICATED IN THE EASTERLY MAGNETIC ANOMALY. THIS MAGNETIC FEATURE IS MADE UP

OF A VERY LARGE AND BROAD ANOMALY AND A SMALLER HIGH TO THE NORTHEAST. BOTH ARE RATHER VAGUE IN OUTLINE. NEITHER ARE THE TYPE OF MAGNETIC HIGH NORMALLY CAUSED BY SULFIDE BODIES.

CONCLUSIONS

1. THE ELECTROMAGNETIC WORK INDICATES THAT THE MAGNETIC ANOMALIES ARE NOT CAUSED BY PYRRHOTITIC SULFIDES.
2. IT IS POSSIBLE THAT SULFIDE BODIES DO EXIST ON THE CLAIM GROUPS IN LOCATIONS REMOVED FROM THE MAGNETIC HIGHS AND NOT INVESTIGATED BY THE PRESENT EM WORK. THERE IS NOTHING IN THE PRESENT WORK TO SUGGEST THAT THIS IS SO, HOWEVER.

RECOMMENDATIONS

NO FURTHER WORK IS RECOMMENDED.



ROSS KIDD
MINING ENGINEER

VANCOUVER, B.C.
DECEMBER 15TH, 1967

SHEET 115K-2

LATITUDE 62° 00' To 62° 15'
LONGITUDE 140° 30' To 141° 00'

DRY CREEK

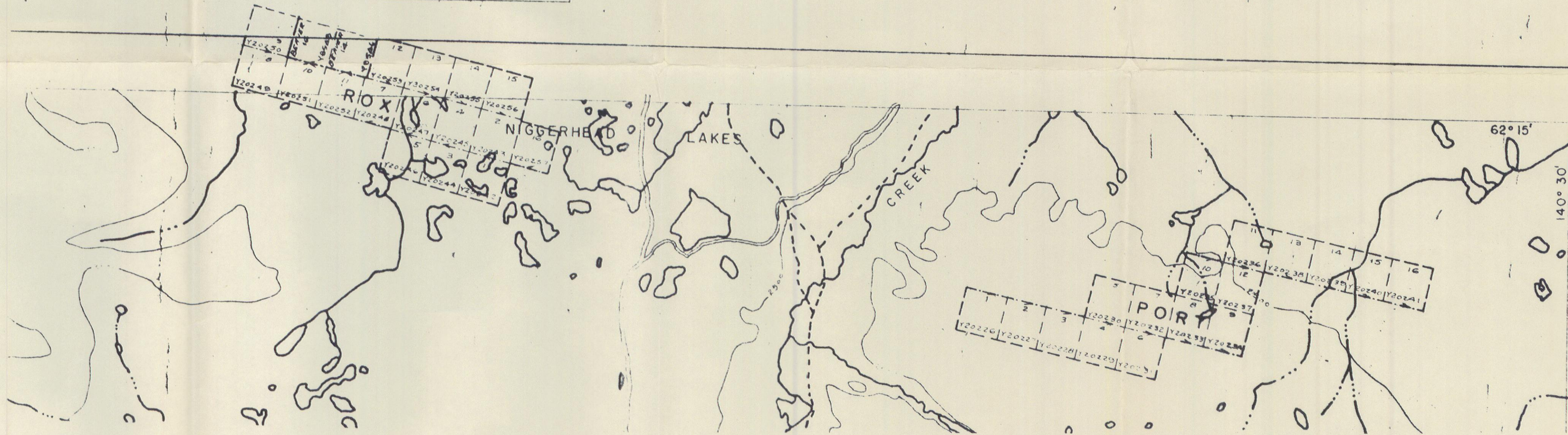
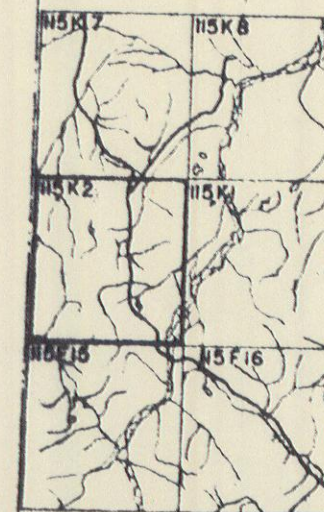
CANADA
DEPARTMENT OF NORTHERN AFFAIRS AND NATIONAL RESOURCES
NORTHERN ADMINISTRATION AND LANDS BRANCH
LANDS DIVISION

SCALE: 1/2 MILE To 1 INCH



ISSUED UNDER THE AUTHORITY OF THE MINISTER
OF
NORTHERN AFFAIRS AND NATIONAL RESOURCES

Magnetic North
N 30 - 13 E

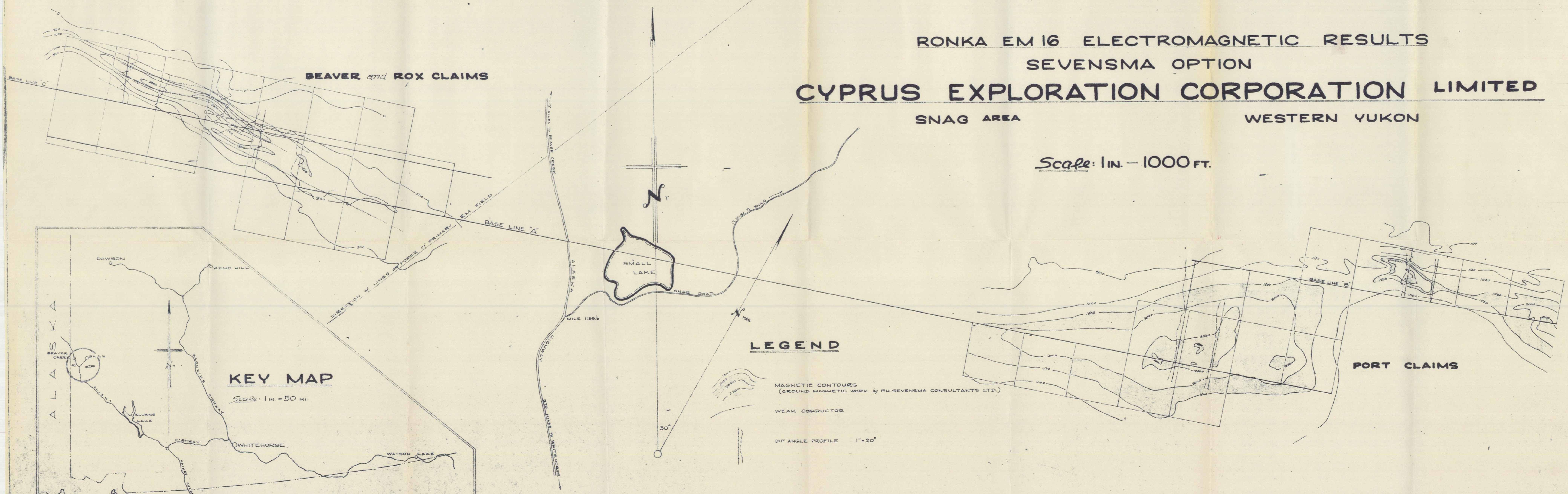


RONKA EM 16 ELECTROMAGNETIC RESULTS
 SEVENSMA OPTION
CYPRUS EXPLORATION CORPORATION LIMITED

SNAG AREA

WESTERN YUKON

Scale: 1 in. = 1000 FT.



LEGEND

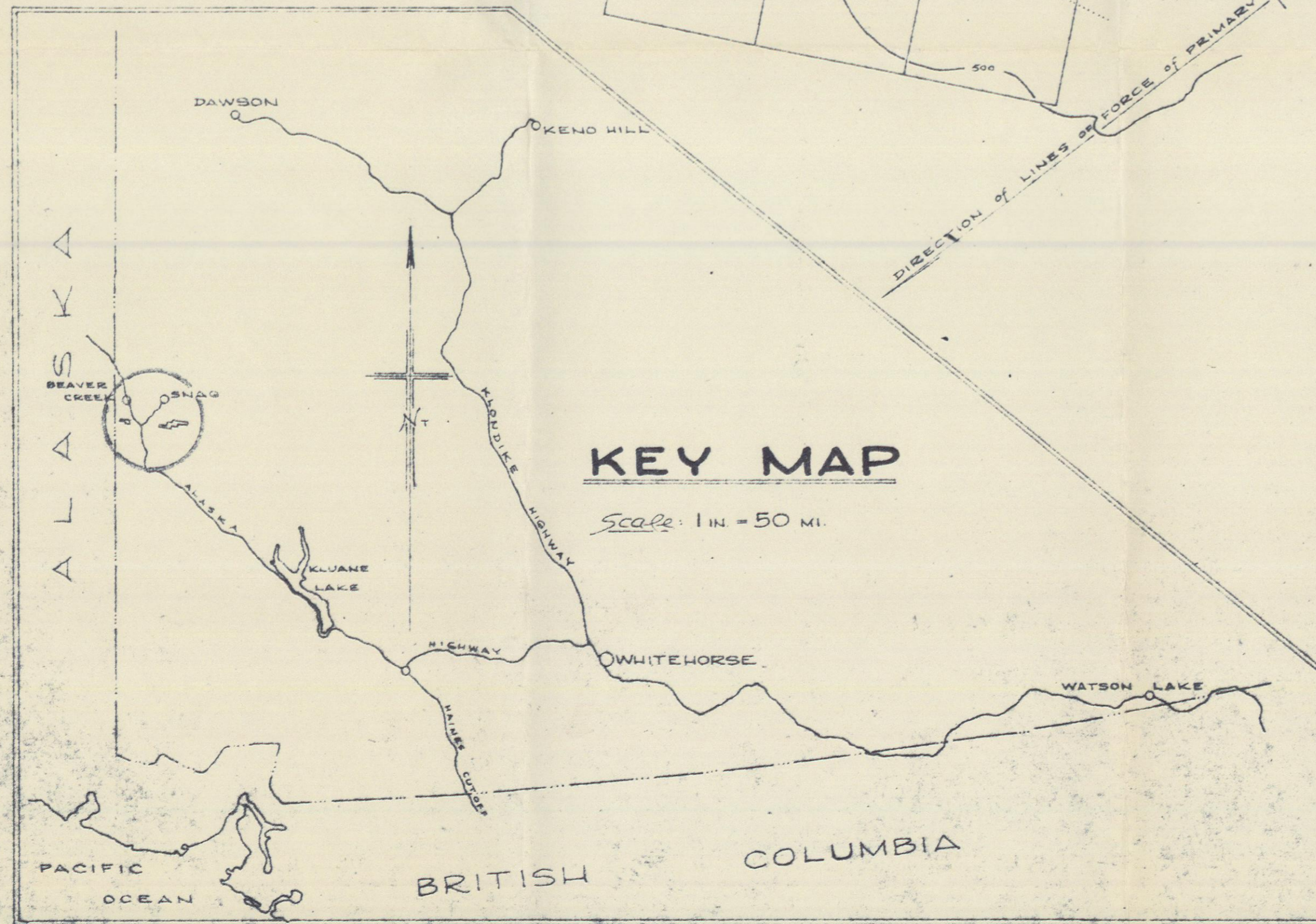
- MAGNETIC CONTOURS
(GROUND MAGNETIC WORK BY PH SEVENSMA CONSULTANTS LTD.)
- WEAK CONDUCTOR
- DIP ANGLE PROFILE 1" = 20°

BEAVER and ROX CLAIMS

PORT CLAIMS

KEY MAP

Scale: 1 in. = 50 MI.



NOVEMBER, 1967

ROSS KIDD
 MINING ENGINEER

Ross Kidd