



EXPLORATION SERVICES LTD.

GEOLOGICAL
GRAVITY
SCINTILLOMETER
ELECTROMAGNETOMETER
MAGNETOMETER
INDUCED POLARIZATION
GEOCHEMICAL
AIRBORNE

520 - 5th Avenue S.W.
Calgary, Alberta
Telephone 264-0895

Report on Gravimetric Survey

Fox Claim Group

Frontier Explorations Ltd.

Dynasty-Blind Creek area, Yukon

GEOLOGICAL SURVEY
APR 23 1968
Resident Geologist
Whitehorse, Y. T.

By
John T. Cook, P.Geol.

RECEIVED
JAN 11 1968
MINING
RECORDERS OFFICE
WHITEHORSE, Y.T.

This report has been examined by
the Geological Evaluation Unit.
approved as to technical worth by:
DeYillan
RESIDENT GEOLOGIST
Approved as to cost in the a. amount
of \$ *64.00*
R. F. Reedson
RESIDENT MINING ENGINEER
Accepted as representation work
under Section 53(4) Yukon Quartz
Mining Act.
Armed Spaw
COMMISSIONER OF YUKON

Table of Contents

	<u>Page</u>
Gravity Field Supervisor's Report By: M. McCombe	2
Report on the Survey and Bouguer Interpretation By: John T. Cook, P.Geol.	
Introduction and Location	4
The Property	4
Field Procedure	6
Personnel	6
Interpretation	7
Method of Data Reduction	7
Recommendation	8
References	9

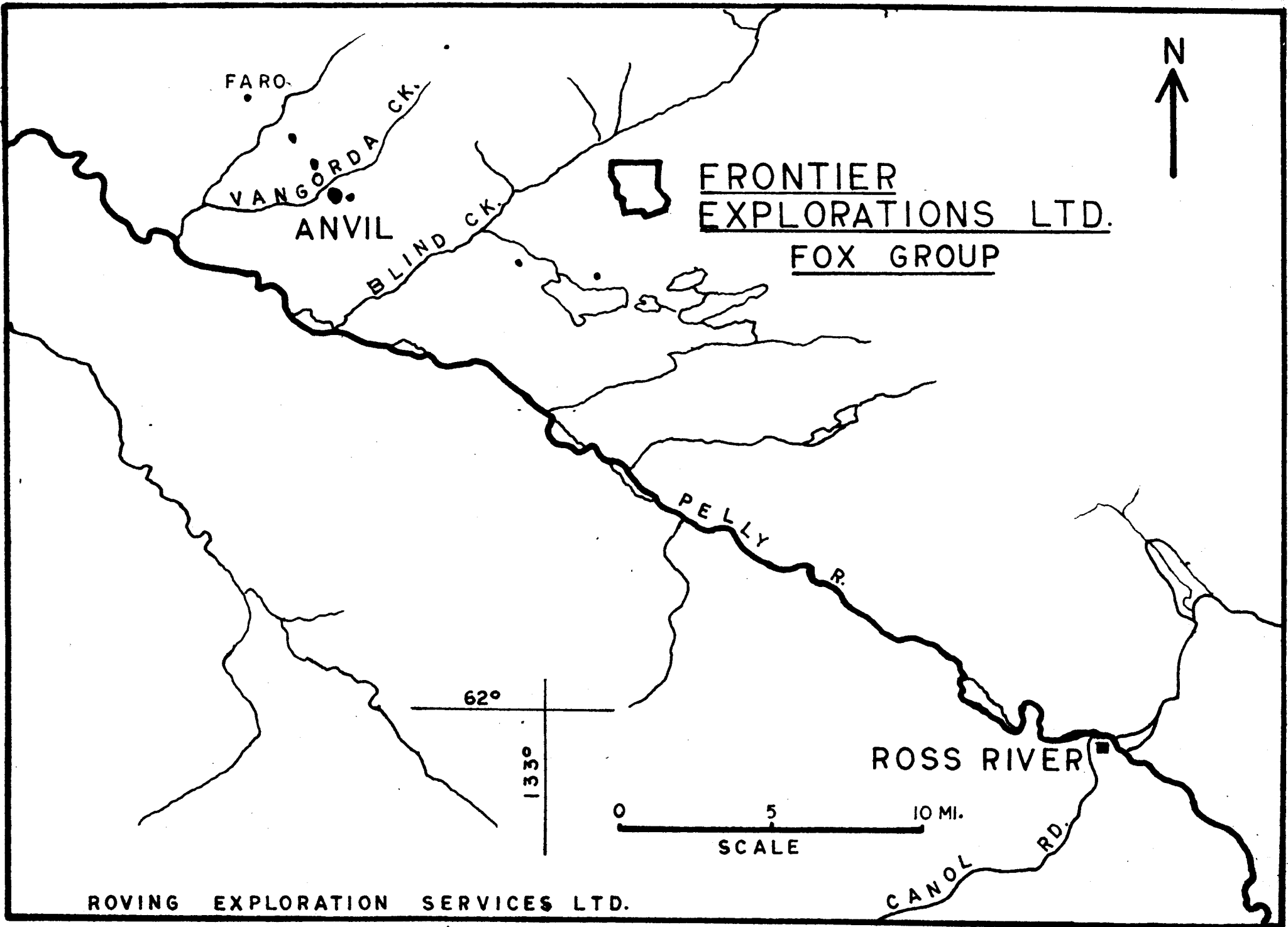
Gravity Computation Sheets

Illustrations

Bouguer Gravity Map 1" = 200 feet Pocket

Location Index Map 1" = 5 miles

Plan of Fox Claims 2" = 1 mile



FARO

VANGORDA CK.

ANVIL

BLIND CK.

FRONTIER
EXPLORATIONS LTD.

FOX GROUP



PELLY R.

62°

133°

ROSS RIVER

0 5 10 MI.

SCALE

CANOL RD.

ROVING EXPLORATION SERVICES LTD.

GRAVIMETRIC SURVEY PROCEDURES

Frontier Explorations Ltd.
Fox Claim Group - Blind Creek area Yukon

Crew

Meter Operator - D. A. Kendall

Surveyor - G. M. DuPre

Rodman - T. Turner

Computing - M. McCombe and G. M. DuPre.

Equipment

Worden Master Gravimeter, Serial No. 790, K = 846
Wild T 16 Theodolite.

(9)

Survey Procedure

A base line was laid out in an east-west direction and picket lines were then turned off at 90° to the base line at 400 foot intervals. All lines were cut. Gravity stations were located 100 feet apart on a picket line grid. All stations were located by stadia distance and elevations were taken to 1/100th of a foot.

Metering Procedure

Worden Master Gravity Meter was checked and found to be working within acceptable limits. The dial was adjusted for the particular working latitude. Base stations were established in the conventional manner. Readings were carefully observed on all stations and repeat readings were taken on selected stations.

Computing

Computing was done in the Calgary office of Roving Exploration Services Ltd. with the following methods being employed:

Meter drift was established by returning to a base station at selected intervals. Drift was then proportioned mathematically between stations on a "run".

A country rock density of 2.67 was selected, giving an elevation correction factor of .060 milligals per foot.

The rate of change in Latitude milligals was established from the Tables of Theoretical Gravity, Dominion Observatory Ottawa, 1962. A Latitude Datum correction line was established along an east west base line and latitude was corrected south from this point.

Bouguer Gravity values were "rounded off" to 1/10th milligal, plotted and contoured on a map scale of 1" = 200 feet. Contour interval used was 0.5 milligals, with additional contours being inserted where appropriate.



Michael McCombe
Michael McCombe
Gravity Supervisor
Roving Exploration Services Ltd. .

REPORT ON GRAVIMETRIC SURVEY

Fox Claim Group, Dynasty-Blind Creek area, Yukon.
Frontier Explorations Ltd.

Introduction and Location

The Fox claim group is located approximately 10 miles due east of the Anvil-Dynasty mine on Vangorda Creek, and 25 miles north-west of Ross River in the Yukon Territory. The Fox Group consists of 64 claims, which lie at about 132° 55 feet west longitude and 62° 15 feet north latitude.

The property is situated between Blind Creek and Swim Lakes, on a forested slope on the flanks of Mount Mye. Elevation of the property is between 3,400 and 4,000 feet.

The field crew found no bedrock outcropping over the area surveyed. The area is rather poorly drained muskeg ground.

The Property

The Fox Group - 64 claims - consist of 16 in accordance with Grouping Certificate Nos. 1393Q, 1394Q, 1395Q and 1396Q. The Groups are as follows:

Certificate Number 1393Q

<u>Claim No.</u>	<u>Record No.</u>
Fox 56	94200
55	94199
54	94198
53	94197
40	94072
39	94071
38	94070
37	94069
24	94056
23	94055
22	94054
21	94053
8	94184
7	94183
6	94182
5	94181

Certificate Number 1394Q

<u>Claim No.</u>	<u>Record No.</u>
Fox 52	94196
51	94195
50	94194
49	94193
36	94068
35	94067
34	94066
33	94065
20	94052
19	94051
18	94050
17	94049
4	94180
3	94179
2	94178
1	94177

Certificate Number 1395Q

<u>Claim No.</u>	<u>Record No.</u>
Fox 29	94061
30	94062
31	94063
32	94064
60	94204
58	94202
57	94201
42	94186
41	94185
26	94058
25	94057
9	94643
10	94644
11	94645
12	94646
13	94647

Certificate Number 1396Q

<u>Claim No.</u>	<u>Record No.</u>
Fox 45	94189
46	94190
47	94191
48	94192
61	94205
62	94206
63	94207
64	94208
59	94203
44	94188
43	94187
28	94060

Certificate Number 1396Q (Continued)

<u>Claim No.</u>	<u>Record No.</u>
Fox 27	94059
14	94648
15	94649
16	94650.

Field Procedure

An east-west base line was laid out and picket lines were set to the south at 400 foot intervals. The lines were cut for surveying and stations were located and flagged at 100 foot intervals. The stations were surveyed using a Theodolite, and picket lines were looped and tied in accurately to the base line. A total of approximately 15 miles of line were run, and some 817 gravity stations were set. The area covered extends south from the Geochemical survey completed previously.

The field crew arrived in the Anvil camp by truck from Calgary and from there were lifted onto the property by helicopter. They were taken out to Ross River by helicopter on completion of the job. The field crew consisted of a gravity meter operator-party chief, surveyor and rodman. Line cutting crew were hired in Ross River.

The field crew started into the property from the Anvil camp October 8, and returned to the Anvil camp on November 7, 1967.

Personnel

D. A. Kendall - Gravity Meter Operator
1213 - 17th Avenue S.W.,
Calgary, Alberta.

G. M. DuPre - Surveyor
1319 Windsor Street,
Calgary, Alberta.

T. Turner - Rodman
Barriere, British Columbia.

M. McCombe - Gravity Supervisor
520 - 5th Avenue S.W.,
Calgary, Alberta.

J. T. Cook, B.Sc., P.Geol.,
520 - 5th Avenue S.W.,
Calgary, Alberta.

Interpretation

Geologically the property is underlain by relatively flat lying metamorphic and volcanic rocks of Mississippian age. It lies within 10 miles of the Anvil lead-zinc discovery where more than 40 million tons of ore reserves have been proven. The mineral deposits occur in sedimentary formation associated with fault systems flanking the Anvil granitic batholith. This mineral area is bounded on the southwest by the Tintina fault trench.

The property lies in a zone of low topography extending from Swim Lakes northwest through Vangorda Creek, which parallels the Tintina trench to the west. The ore deposits are believed by some geologists to be controlled by a fault zone related to its position between the Tintina fault and the Anvil batholith.

Method of Data Reduction

Diurnal & temperature Drift was "proportioned" on each "run" mathematically. A base was observed prior to, and upon completion of a number of station observations. The difference in base observations was accepted as being the drift for that particular period. A rate of drift was established (base drift/time) and proportioned over each observation during that interval.

Observed gravity was established by multiplying Meter Observations (plus or minus drift correction) by the constant for the particular meter used (in this case Worden Master Meter No. 790 K 0846⁽⁹⁾)
Base B-1 was given a prospect correction of 100.00 miligals.
All other Bases are relative to this.

Elevation Correction

Station elevations to the nearest 1/100th of a foot were multiplied by a combined free-air-Bouguer correction constant. This constant is derived from the density of the country rock in the particular area (2.67) giving a free-air-Bouguer correction constant of .060 miligals per foot, (station elevation X .060 mg./ft. = elevation correction in mg.)

Latitude Correction

Latitude rate of change was established from the Tables of Theoretical Gravity, Ottawa. The rate of change was found to be .02 miligals per 100 feet north latitude in this area. A latitude correction datum line was theoretically established along a true

east-west base line on the northern extremity of the survey area. Latitude rate of change was computed mathematically for each station south of the datum line.

1. Station reading in dial divisions \pm Diurnal drift in dial divisions X Meter K \pm prospect correction = Observed Gravity.
2. Observed Gravity + elevation \pm Latitude correction = Bouguer Gravity.

The Bouguer values were contoured at an interval of 0.5 milligals with the exception that locally a smaller interval was sometimes inserted. Over the greater part of the surveyed area from Line 0 to Line 76 E there are no anomalies that are considered significant and the Bouguer relief is low and monotonous.

On Line 70 at the 900 foot S station there is a single point Bouguer high of 0.8 milligals. This is of questionable validity and is considered to be the result of a miss reading of the meter.

However from Line 80 to Line 92 there appear to be five distinct and valid anomalies. These are lettered A, B, C, D and E on the Bouguer map. None of these are based on solitary values but are supported by an average of three high adjoining values. Anomaly D has a closure of 0.8 milligals and is probably most significant of the five.

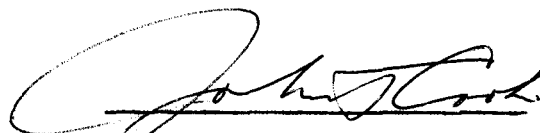
Anomalies C, D and E along with two other Bouguer highs to the northeast appear to signify a trend which could represent a mineralized zone extending northeasterly from anomaly E.

Examination of the Geochemical Survey completed previously on the claims to the north suggest a continuation of this trend to the northeast of the gravity map area.

Anomalies A and B are also interesting and should be given further consideration.

Recommendation

Detailing of the anomalous area described above should be considered. Gravity coverage should be extended to the northeast into the area of the Geochemical anomaly. Provided detailed gravity work substantiates the anomalies, diamond drilling should be considered.



John T. Cook, BSc. P.Geol.
ROVING EXPLORATION SERVICES LTD.

References

Tay River Sheet

Geological Survey of Canada
Map 13 - 1961
By Reddick and Green.

Canol Road

Geological Survey of Canada
Map 45 - 21A
By E. D. Kindle.

C.I.M.M. Paper

October, 1966
By Dr. A. E. Aho.

AREA DYNASTY YU KON.

ROVING EXPLORATION

PARTY GR. #1

CLIENT FRONTIER EXPL. LTD.

GRAVITY COMPUTATION SHEET

PARTY CHIEF _____

ELEVATION CORRECTION FACTOR 160

PROSPECT CORRECTION 100 MG

COMP. BY _____ CHK. BY _____

STA. NO.	BOOK PAGE	GRID.	ELEV.	ELEV. CORR.	LAT. CORR.	OBS. GRAV.	TERR. CORR.	BOUG. GRAV.	NO.	RECHECK OBS. GRAV.	BOUG. GRAV.	DATE RUN	DATE RECHECK
810.50E	4	BASE	3673.95	220.43	.00	101.13		321.56					
51E	4	"	3678.54	220.71	.00	101.03		321.74					
52E	4	"	3682.65	220.96	.00	100.75		321.75					
53E	5	"	3684.91	221.09	.00	100.75		321.75					
54E	5	"	3689.10	221.35	.00	100.39		321.73					
55E	5	"	3693.34	221.60	.00	100.19		321.71					
56E	5	"	3697.34	221.84	.00	100.00		321.81					
57E	5	"	3701.06	222.06	.00	99.72		321.78					
58E	5	"	3705.17	222.31	.00	99.43		321.74					
59E	5	"	3701.69	222.10	.00	99.24		321.31					
60E	5	"	3715.16	222.91	.00	98.95		321.86					
61E	5	"	3719.21	223.15	.00	98.77		321.92					
62E	5	"	3722.57	223.35	.00	98.49		321.84					
63E	5	"	3728.14	223.69	.00	98.39		322.08					
64E	5	"	3733.75	224.02	.00	98.00		322.02					
65E	5	"	3736.68	224.20	.00	97.97		322.02					
66E	5	"	3741.49	224.49	.00	97.45		321.94					
67E	5	"	3744.59	224.68	.00	97.45		322.13					
68E	6	"	3753.63	225.34	.00	96.97		322.31					
69E	6	"	3762.61	225.76	.00	96.69		322.45					
70E	6	"	3769.02	226.14	.00	96.22		322.36					
71E	6	"	3773.71	226.42	.00	95.94		322.36					
72E	6	"	3780.25	226.80	.00	95.65		322.45					
73E	6	"	3785.91	227.16	.00	95.27		322.43					
74E	6	"	3792.01	227.52	.00	94.99		322.51					
75E	6	"	3797.07	227.82	.00	94.60		322.42					
76E	6	"	3804.56	228.27	.00	94.20		322.47					
77E	6	"	3810.90	228.65	.00	93.95		322.60					
78E	6	"	3815.66	228.94	.00	93.57		322.51					
79E	7	"	3822.03	229.32	.00	93.29		322.61					
80E	7	"	3827.21	229.63	.00	92.91		322.54					
81E	7	"	3832.08	229.92	.00	92.62		322.54					
82E	7	"	3835.12	230.11	.00	92.53		322.64					
83E	7	"	3841.03	230.46	.00	92.25		322.71					
84E	7	"	3845.84	230.75	.00	91.96		322.71					
85E	7	"	3844.67	230.68	.00	91.95		322.63					
86E	7	"	3849.86	230.99	.00	91.77		322.76					
87E	7	"	3861.00	231.66	.00	91.20		322.86					
88E	7	"	3877.42	232.65	.00	90.17		322.92					
89E	7	"	3887.90	233.27	.00	89.42		322.69					
90E	7	"	3892.17	233.53	.00	89.32		322.85					
91E	8	"	3900.97	234.06	.00	88.79		322.85					
92E	8	"	3902.78	234.17	.00	88.47		322.64					

AREA DYNASTY, YUKON

ROVING EXPLORATION

PARTY GR. #1

CLIENT FRONTIER EXPL. LTD. GRAVITY COMPUTATION SHEET

PARTY CHIEF _____

ELEVATION CORRECTION FACTOR .060 PROSPECT CORRECTION 100.00 MG

COMP. BY _____ CHK. BY _____

STA. NO.	BOOK PAGE	GRID.	ELEV.	ELEV. CORR.	LAT. CORR.	OBS. GRAV.	TERR. CORR.	BOUG. GRAV.	NO.	RECHECK OBS. GRAV.	BOUG. GRAV.	DATE RUN	DATE RECHECK
BL 0+00	1	BASE	3500.00	210.00	.00	108.98		318.98					
1.E.	1	"	3504.43	210.27	.00	108.72		318.99					
2.E.	1	"	3507.53	210.45	.00	108.66		319.11					
3.E.	1	"	3510.51	210.63	.00	108.49		319.11					
4.E.	1	"	3513.37	210.80	.00	108.39		319.19					
5.E.	1	"	3515.81	210.95	.00	108.32		319.17					
6.E.	1	"	3519.08	211.14	.00	108.04		319.18					
7.E.	1	"	3521.02	211.26	.00	107.90		319.21					
8.E.	1	"	3523.96	211.59	.00	107.88		319.47					
9.E.	1	"	3529.45	211.77	.00	107.70		319.47					
10.E.	1	"	3532.60	211.96	.00	107.54		319.50					
11.E.	1	"	3535.02	212.10	.00	107.34		319.44					
12.E.	1	"	3538.09	212.29	.00	107.27		319.56					
13.E.	1	"	3540.50	212.43	.00	107.11		319.59					
14.E.	1	"	3542.95	212.55	.00	107.11		319.66					
15.E.	1	"	3544.63	212.68	.00	107.13		319.81					
16.E.	2	"	3547.23	212.83	.00	107.17		320.00					
17.E.	2	"	3549.56	212.97	.00	107.08		320.05					
18.E.	2	"	3553.48	213.21	.00	106.81		320.02					
19.E.	2	"	3557.28	213.43	.00	106.63		320.06					
20.E.	2	"	3562.30	213.74	.00	106.38		320.12					
21.E.	2	"	3564.29	213.86	.00	106.40		320.26					
22.E.	2	"	3569.34	214.16	.00	106.02		320.18					
23.E.	2	"	3573.39	214.40	.00	106.05		320.45					
24.E.	2	"	3575.00	214.50	.00	105.69		320.19					
25.E.	2	"	3584.17	215.05	.00	105.42		320.47					
26.E.	2	"	3586.96	215.22	.00	105.43		320.65					
27.E.	2	"	3592.26	215.54	.00	105.17		320.71					
28.E.	2	"	3597.51	215.85	.00	104.81		320.66					
29.E.	3	"	3602.15	216.13	.00	104.72		320.85					
30.E.	3	"	3604.13	216.25	.00	104.68		320.93					
31.E.	3	"	3607.74	216.46	.00	104.51		320.97					
32.E.	3	"	3610.19	216.61	.00	104.60		321.21					
33.E.	3	"	3613.71	216.82	.00	104.45		321.27					
34.E.	3	"	3615.44	216.93	.00	104.27		321.20					
35.E.	3	"	3626.11	217.57	.00	103.55		321.12					
36.E.	3	"	3630.36	217.82	.00	103.37		321.19					
37.E.	3	"	3635.34	218.12	.00	102.54		320.66					
38.E.	3	"	3635.41	218.12	.00	103.30		321.42					
39.E.	3	"	3639.64	218.38	.00	103.04		321.42					
40.E.	4	"	3643.00	218.58	.00	102.97		321.51					
41.E.	4	"	3647.40	218.84	.00	102.61		321.45					
42.E.	4	"	3650.52	219.03	.00	102.52		321.55					
43.E.	4	"	3652.73	219.16	.00	102.39		321.50					
44.E.	4	"	3655.64	219.34	.00	102.27		321.61					
45.E.	4	"	3658.71	219.52	.00	102.00		321.52					
46.E.	4	"	3661.55	219.69	.00	101.93		321.62					
47.E.	4	"	3662.94	219.73	.00	101.87		321.60					
48.E.	4	"	3665.54	219.93	.00	101.69		321.62					
49.E.	4	"	3668.70	220.12	.00	101.51		321.63					

AREA DYNASTY, YUKON

ROVING EXPLORATION

PARTY GR. #1

CLIENT IMPERIAL OIL & GAS LTD. GRAVITY COMPUTATION SHEET

PARTY CHIEF _____

ELEVATION CORRECTION FACTOR .060 PROSPECT CORRECTION _____ MG

COMP. BY _____ CHK. BY _____

STA. NO.	BOOK PAGE	GRID.	ELEV.	ELEV. CORR.	LAT. CORR.	OBS. GRAV.	TERR. CORR.	BOUG. GRAV.	NO.	RECHECK OBS. GRAV.	BOUG. GRAV.	DATE RUN	DATE RECHECK
1 S	12	O.E.	3489.91	209.39	.02	110.32		319.14					
2 S	12	"	3483.27	209.00	.04	110.59		319.63					
3 S	12	"	3463.25	207.80	.06	111.82		319.68					
4 S	12	"	3454.30	207.26	.08	112.24		319.62					
5 S	12	"	3459.67	207.58	.10	111.81		319.49					
6 S	12	"	3454.87	207.29	.12	112.09		319.50					
7 S	12	"	3447.12	206.83	.14	112.56		319.53					
8 S	12	"	3436.84	206.21	.16	112.95		319.30					
9 S	12	"	3425.14	205.51	.18	113.69		319.38					
10 S	12	"	3418.07	205.08	.20	113.69		318.97	?				
11 S	12	"	3418.19	205.09	.22	113.59		318.94					
12 S	13	"	3415.57	204.93	.24	113.69		318.86					
13 S	13	"	3419.16	205.15	.26	113.48		318.89					
14 S	13	"	3422.04	205.32	.28	113.30		318.90					
15 S	13	"	3426.67	205.60	.30	113.01		318.91					
16 S	13	"	3429.57	205.77	.32	112.82		318.91					
17 S	13	"	3432.28	205.94	.34	112.72		319.00					
18 S	13	"	3436.06	206.16	.36	112.54		319.06					
19 S	13	"	3440.45	206.43	.38	112.24		319.05					
20 S	13	"	3444.52	206.67	.40	112.05		319.12					
21 S	13	"	3447.55	206.85	.42	111.96		319.23					
22 S	13	"	3449.60	207.23	.44	111.58		319.30					
23 S	13	"	3457.15	207.43	.46	111.39		319.28					
24 S	13	"	3462.83	207.77	.48	111.11		319.36					
25 S	14	"	3467.83	208.07	.50	111.11		319.68					
26 S	14	"	3467.67	208.06	.52	110.92		319.50					
27 S	14	"	3470.22	208.21	.54	110.91		319.66					
28 S	14	"	3475.34	208.52	.56	110.73		319.81					
29 S	14	"	3479.21	208.76	.58	110.26		319.60					
30 S	14	"	3483.49	209.01	.60	110.15		319.76					
1.E.	14	30.S.	3488.25	209.30	.60	109.86		319.26					
2.E.	14	30.S.	3492.23	209.53	.60	109.57		319.70					
3.E.	14	30.S.	3492.85	209.57	.60	109.57		319.74					
4.E.	14	30.S.	3497.46	209.82	.60	109.30		319.72					
1 S	17	A.E.	3498.20	209.89	.02	109.88		319.77					
2 S	17	"	3491.11	209.47	.04	109.79		319.30	?				
3 S	17	"	3485.31	209.12	.06	110.45		319.63					
4 S	17	"	3480.43	208.83	.08	110.55		319.46					
5 S	16	"	3476.83	208.61	.10	110.64		319.35					
6 S	16	"	3469.01	208.14	.12	111.11		319.37					
7 S	16	"	3460.99	207.66	.14	111.59		319.39					
8 S	16	"	3451.69	207.10	.16	111.88		319.14					
9 S	16	"	3442.39	206.54	.18	112.63		319.35					
10 S	16	"	3430.50	206.43	.20	112.91		319.54					
11 S	16	"	3429.90	205.80	.22	112.82		318.89					
12 S	16	"	3430.96	205.83	.24	112.82		318.89					
13 S	16	"	3437.03	205.92	.26	112.74		318.92					
14 S	16	"	3434.62	206.08	.28	112.55		318.91					
15 S	16	"	3436.32	206.18	.30	112.55		319.03					
16 S	16	"	3446.55	206.79	.32	111.89		319.00					

AREA DYNASTY YUKON

ROVING EXPLORATION

PARTY _____

CLIENT FRONTIER EXPL. LTD. GRAVITY COMPUTATION SHEET

PARTY CHIEF _____

ELEVATION CORRECTION FACTOR _____ PROSPECT CORRECTION _____ MG

COMP. BY _____ CHK. BY _____

STA. NO.	BOOK PAGE	GRID.	ELEV.	ELEV. CORR.	LAT. CORR.	OBS. GRAV.	TERR. CORR.	BOUG. GRAV.	NO.	RECHECK OBS. GRAV.	BOUG. GRAV.	DATE RUN	DATE RECHECK
17S	16	4E	3447.63	206.86	.31	111.89		319.09					
18S	16	"	3450.09	207.03	.36	111.81		319.20					
19S	15	"	3455.61	207.39	.38	111.43		319.15					
20S	15	"	3462.55	207.25	.40	111.15		319.30					
21S	15	"	3468.14	208.09	.42	110.56		319.02					
22S	15	"	3472.12	208.33	.44	110.40		319.07					
23S	15	"	3471.19	208.22	.46	110.59		319.32					
24S	15	"	3473.95	208.44	.47	110.31		319.23					
25S	15	"	3476.51	208.59	.50	110.73		319.32					
26S	15	"	3478.51	208.71	.52	110.13		319.36					
27S	15	"	3480.71	208.84	.54	109.95		319.33					
28S	15	"	3485.75	209.16	.56	109.57		319.29					
29S	15	"	3487.23	209.23	.58	109.57		319.38					
30S	15	"	3497.05	209.82	.60	109.30		319.72					
1S	17	8E	3520.13	211.21	.02	108.74		319.97					
2S	17	"	3512.58	210.75	.04	109.30		320.09	7				
3S	17	"	3508.00	210.48	.06	109.79		319.93					
4S	17	"	3503.10	210.19	.08	109.57		319.84					
5S	17	"	3494.15	209.65	.10	109.95		319.70					
6S	17	"	3488.85	209.33	.12	110.23		319.68					
7S	17	"	3479.91	208.80	.14	110.69		319.63					
8S	18	"	3470.78	208.25	.16	111.26		319.67					
9S	18	"	3463.21	207.79	.18	111.63		319.60					
10S	18	"	3454.03	207.24	.20	112.29		319.23					
11S	18	"	3453.26	207.20	.22	112.29		319.21					
12S	18	"	3455.15	207.31	.24	112.09		319.64					
13S	18	"	3455.81	207.35	.26	112.09		319.70					
14S	18	"	3455.54	207.33	.28	112.28		319.89					
15S	18	"	3458.30	207.50	.30	112.58		319.88					
16S	18	"	3466.19	207.97	.32	111.99		320.28					
17S	18	"	3462.50	207.25	.34	111.99		320.08					
18S	18	"	3466.85	208.01	.36	111.80		320.17					
19S	18	"	3469.79	208.19	.38	111.79		320.36					
20S	18	"	3477.04	208.62	.40	110.95		319.97	7				
21S	19	"	3481.83	208.91	.42	110.95		320.28					
22S	19	"	3488.81	209.33	.44	110.85		320.42					
23S	19	"	3494.73	209.68	.46	110.37		320.51					
24S	19	"	3498.73	209.93	.48	110.10		320.51					
25S	19	"	3502.67	210.16	.50	109.98		320.69					
26S	19	"	3506.51	210.39	.52	109.61		320.52					
27S	19	"	3510.49	210.63	.54	109.35		320.50					
28S	19	"	3511.31	210.68	.56	109.33		320.57					
29S	19	"	3512.23	210.73	.58	109.32		320.63					
30S	19	"	3515.68	210.99	.60	108.95		320.49					
9E	22	30S	3524.93	211.50	.60	108.95		321.05					
10E	22	30S	3530.98	211.86	.60	108.75		321.21					
11E	22	30S	3533.05	211.98	.60	108.75		321.33					

AREA DYNASTY, YUKON

ROVING EXPLORATION

PARTY _____

CLIENT FRONTIER EXPL. LTD. GRAVITY COMPUTATION SHEET

PARTY CHIEF _____

ELEVATION CORRECTION FACTOR _____ PROSPECT CORRECTION _____ MG

COMP. BY _____ CHK. BY _____

STA. NO.	BOOK PAGE	GRID.	ELEV.	ELEV. CORR.	LAT. CORR.	OBS. GRAV.	TERR. CORR.	BOUG. GRAV.	NO.	RECHECK OBS. GRAV.	BOUG. GRAV.	DATE RUN	DATE RECHECK
15	20	12E	353284	211.92	.02	107.92		319.91					
25	20	"	352606	211.56	.04	108.50		319.90					
35	20	"	351929	211.16	.06	108.86		320.08					
45	20	"	351543	210.93	.08	109.14		320.15					
55	20	"	351036	210.62	.10	109.35		320.02					
65	20	"	350415	210.25	.12	109.79		320.16					
75	20	"	349607	209.76	.14	110.22		320.17					
85	20	"	348775	209.27	.16	110.75		320.18					
95	20	"	348343	209.00	.18	110.76		319.94	?				
105	20	"	347965	208.75	.20	110.04		320.02					
115	20	"	346797	208.08	.22	111.89		320.19					
125	20	"	346446	207.87	.24	112.17		320.28					
135	20	"	346753	208.05	.26	111.80		320.11					
145	21	"	347026	208.22	.28	111.72		320.22					
155	21	"	347390	208.93	.30	111.44		320.17	1				
165	21	"	347799	208.68	.32	111.34		320.34					
175	21	"	348224	208.93	.34	111.06		320.33					
185	21	"	348310	208.99	.36	111.06		320.91	?				
195	21	"	348633	209.18	.38	110.78		320.35	?				
205	21	"	349258	209.55	.40	110.51		320.46					
215	21	"	349864	209.92	.42	110.23		320.57					
225	21	"	350852	210.51	.44	109.67		320.62					
235	21	"	351273	210.76	.46	109.38		320.60					
245	21	"	351316	210.79	.48	109.57		320.86					
255	22	"	352290	211.32	.50	109.30		321.17					
265	22	"	352647	211.59	.52	109.21		321.32					
275	22	"	353191	211.91	.54	109.83		321.88					
285	22	"	353485	212.09	.56	108.61		321.29					
295	22	"	353618	212.17	.58	108.65		321.40					
305	22	"	354012	212.91	.60	108.37		321.38					
15	23	16E	354183	212.51	.02	107.90		320.53	?				
25	23	"	353832	212.30	.04	108.08		320.42					
35	23	"	353224	211.93	.06	109.64		320.63					
45	23	"	352802	211.68	.08	109.91		320.77					
55	23	"	352329	211.40	.10	109.38		320.88					
65	23	"	351923	211.15	.12	109.75		321.02	?				
75	23	"	351688	211.01	.14	109.94		320.99					
85	23	"	351012	210.61	.16	109.93		320.70		b ³			
95	23	"	350059	210.09	.18	110.41		320.83					
105	23	"	349359	209.62	.20	111.06		320.88					
115	23	"	348533	209.02	.22	111.43		320.77					
125	23	"	348983	209.39	.24	111.79		321.42	?				
135	24	"	348132	208.83	.26	111.32		320.46					
145	24	"	348479	209.09	.28	111.22		320.59					
155	24	"	348757	209.25	.30	111.22		320.77					
165	24	"	349331	209.60	.32	110.93		320.75					
175	24	"	349831	209.90	.34	110.55		320.79	?				
185	24	"	350247	210.15	.36	110.35		320.86					
195	24	"	350537	210.32	.38	110.26		320.96					
205	24	"	351397	210.84	.40	109.52		320.76					

AREA DYNASTY, YUKON

ROVING EXPLORATION

PARTY GR. #1

CLIENT FRONTIER EXPL. LTD. GRAVITY COMPUTATION SHEET

PARTY CHIEF _____

ELEVATION CORRECTION FACTOR _____

PROSPECT CORRECTION _____

MG _____

COMP. BY _____

CHK. BY _____

STA. NO.	BOOK PAGE	GRID.	ELEV.	ELEV. CORR.	LAT. CORR.	OBS. GRAV.	TERR. CORR.	BOUG. GRAV.	NO.	RECHECK OBS. GRAV.	BOUG. GRAV.	DATE RUN	DATE RECHECK
26S	25	6E	3537.95	212.28	.52	108.26		321.06					
27S	25	"	3541.57	212.48	.54	107.97		320.97					
28S	25	"	3542.6	212.68	.56	107.79		321.03					
29S	25	"	3550.47	213.03	.59	107.39		321.00					
30S	25	"	3553.07	213.18	.60	106.93		320.70					
31S	25	"	3559.03	213.54	.62			320.55					
1S	25	20E	3557.90	213.47	.60	107.06		320.53	✓				
2S	25	"	3552.05	213.12	.04	107.45		320.60					
3S	25	"	3546.85	212.81	.06	108.10		320.97	?				
4S	25	"	3544.30	212.66	.08	108.10		320.84					
5S	25	"	3536.87	212.22	.10	108.54		320.91					
6S	25	"	3533.45	212.01	.12	109.05		321.18					
7S	25	"	3529.18	211.75	.14	108.87		320.76	?				
8S	26	"	3523.98	211.44	.16	109.53		321.13					
9S	26	"	3516.05	210.96	.18	110.11		321.25					
10S	26	"	3517.50	211.07	.20	110.11		321.38					
11S	26	"	3508.25	210.50	.22	110.30		321.02	?				
12S	26	"	3504.05	210.21	.24	110.67		321.15					
13S	26	"	3503.82	210.23	.26	110.69		321.17					
14S	26	"	3503.33	210.20	.28	110.51		320.99					
15S	26	"	3509.22	210.55	.30	110.25		321.08					
16S	26	"	3511.55	210.69	.32	110.23		321.24					
17S	26	"	3513.42	210.81	.34	109.96		321.11					
18S	26	"	3519.07	211.14	.36	109.44		320.99					
19S	26	"	3527.53	211.65	.38	109.82		321.05					
20S	27	"	3532.48	211.95	.40	108.65		321.01					
21S	27	"	3535.95	212.16	.42	108.46		321.06					
22S	27	"	3538.89	212.33	.44	108.20		320.97	?				
23S	27	"	3541.28	212.66	.46	107.90		321.02					
24S	27	"	3547.25	212.83	.48	107.75		321.06					
25S	27	"	3554.38	213.26	.50	107.26		321.02					
26S	27	"	3558.99	213.54	.52	106.99		321.05					
27S	27	"	3562.55	213.75	.54	106.89		321.28					
28S	27	"	3566.07	213.96	.56	106.72		321.24					
29S	27	"	3571.22	214.27	.58	106.24		321.09	?				
30S	27	"	3572.30	214.34	.60								
31S	27	"	3573.51		.62								
17E	28	31S	3559.38	213.56	.62	106.45		320.65					
18E	28	31S	3566.28	213.98	.62	106.16		320.76					
19E	28	31S	3570.71	214.21	.62	106.15		321.61					
1S	28	24E	3570.57	214.23	.02	106.59		320.95					
2S	"	"	3571.14	214.27	.04	106.58		320.89					
3S	"	"	3563.67	213.82	.06	107.05		320.95					
4S	"	"	3558.22	213.49	.08	107.61		321.18					
5S	"	"	3562.50	213.75	.10	107.61		321.46	?				
6S	"	"	3551.00	213.06	.12	107.89		321.07					
7S	"	"	3548.00	212.88	.14	108.08		321.10					
8S	29	"	3545.21	212.17	.16	108.36		320.69					

AREA DIVERSITY YUKON

ROVING EXPLORATION

PARTY GR #1

CLIENT FRONTIER EXPL LTD.

GRAVITY COMPUTATION SHEET

PARTY CHIEF _____

ELEVATION CORRECTION FACTOR _____

PROSPECT CORRECTION _____

MG

COMP. BY _____

CHK. BY _____

STA. NO.	BOOK PAGE	GRID.	ELEV.	ELEV. CORR.	LAT. CORR.	OBS. GRAV.	TERR. CORR.	BOUG. GRAV.	NO.	RECHECK OBS. GRAV.	BOUG. GRAV.	DATE RUN	DATE RECHECK
105	29	24E	353755	212.25	20	108.85		321.24					
115	"	"	353979	212.08	22	108.82		321.12					
125	"	"	353955	211.83	24	109.10		321.17					
135	"	"	353627	211.62	26	109.19		321.07					
145	"	"	352701	211.62	28	109.19		321.09					
155	"	"	352950	211.79	30	108.63		320.72					
165	"	"	352606	211.68	32	108.91		320.91					
175	"	"	353018	211.81	34	108.90		321.05	?				
185	"	"	353705	212.22	36	108.43		321.01					
195	"	"	354071	212.41	38	107.96		320.75	?				
205	"	"	354543	212.73	40	107.81		321.00					
215	"	"	355235	213.14	42	107.49		321.05					
225	"	"	355857	213.51	44	107.02		320.97					
235	30	"	356376	213.83	46	106.74		321.03					
245	"	"	356857	214.11	48	106.44		321.03					
255	"	"	357160	214.30	50	106.17		320.97					
265	"	"	357775	214.60	52	105.79		320.97					
275	"	"	358013	214.81	54	105.60		320.95					
285	"	"	358570	215.10	56	105.22		320.98					
295	"	"	358804	215.28	58	105.22		320.71					
305	"	"	359146	215.49	60	105.04		321.13	?				
258	30	30S	359765	215.86	60	104.57		321.35					
268	30	30S	360329	216.20	60	104.28		321.08					
278	30	30S	360811	216.49	60	104.18		321.27					
15	32	28E	359324	215.61	60	105.45		321.08					
25	"	"	359142	215.49	64	105.65		321.18					
35	"	"	359397	215.64	66	105.37		321.15					
45	"	"	359002	215.40	68	105.74		321.22					
55	"	"	358320	214.99	10	106.11		321.20					
65	"	"	358033	214.82	12	106.50		321.44					
75	"	"	357780	214.67	14	106.68		321.44	?				
85	"	"	357350	214.41	16	106.70		321.27					
95	"	"	357166	214.30	18	106.88		321.36					
105	"	"	356936	214.16	20	106.78		321.27	?				
115	"	"	356412	213.85	22	107.33		321.43					
125	"	"	356099	213.66	24	107.33		321.44					
135	"	"	355750	213.45	26	107.54		321.25					
145	"	"	355706	213.43	28	107.49		321.20					
155	"	"	355692	213.42	30	107.45		321.17					
165	31	"	355226	215.14	32	107.55		321.01					
175	"	"	355268	213.16	34	107.55		321.05					
185	"	"	355902	213.54	36	107.07		320.97					
195	"	"	355965	213.58	38	107.16		321.12	?				
205	"	"	356503	213.40	40	106.81		321.14					
215	"	"	357182	214.31	42	106.52		321.23					
225	"	"	357724	214.63	44	105.95		321.02	?				
235	"	"	357997	214.80	46	105.95		321.21					
245	"	"	358717	215.23	48	105.48		321.19					

AREA WYOMING, WYRON
 CLIENT WYRON

ROVING EXPLORATION
GRAVITY COMPUTATION SHEET

PARTY GE #1
 PARTY CHIEF _____
 COMP. BY _____
 CHK. BY _____

ELEVATION CORRECTION FACTOR _____ PROSPECT CORRECTION _____ MG

STA. NO.	BOOK PAGE	Grid.	ELEV.	ELEV. CORR.	LAT. CORR.	OBS. GRAV.	TERR. CORR.	BOUG. GRAV.	NO.	RECHECK OBS. GRAV.	BOUG. GRAV.	DATE RUN	DATE RECHECK
255	31	325	3592.33	215.54	.50	105.02		321.06					
265	"	"	3592.55	215.86	.52	104.74		321.12					
275	"	"	3593.12	216.89	.54	104.93		321.36					
285	"	"	3604.09	216.25	.56	104.55		321.36					
295	"	"	3609.19	216.55	.58	104.08		321.21					
15	33	325	3607.25	216.44	.04	104.96		321.42					
25	"	"	3608.97	216.54	.04	104.68		321.26					
35	"	"	3606.20	216.32	.06	105.05		321.49					
45	"	"	3604.60	216.28	.07	105.14		321.50	?				
55	"	"	3602.34	216.18	.10	105.14		321.50					
65	"	"	3598.26	215.90	.12	105.51		321.42	?				
75	"	"	3585.54	215.13	.14	105.61		320.80	?				
85	"	"	3584.30	215.06	.16	105.60		320.82	?				
95	"	"	3583.30	215.00	.18	105.33		320.98	?				
105	"	"	3580.31	214.82	.20	105.37		320.91					
115	"	"	3577.32	214.64	.22	105.89		320.74					
125	"	"	3576.25	214.57	.24	106.06		320.87					
135	"	"	3573.26	214.43	.26	106.25		320.84					
145	"	"	3572.18	214.33	.28	106.25		320.80					
155	"	"	3569.24	214.14	.30	106.52		320.76					
165	34	"	3557.77	214.07	.32	106.52		320.91					
175	"	"	3569.89	214.19	.34	106.23		320.86					
185	"	"	3572.61	214.36	.36	106.12		320.85					
195	"	"	3576.36	214.58	.38	105.86		320.82					
205	"	"	3577.16	214.63	.40	105.56		320.89					
215	"	"	3581.30	214.88	.42	105.62		320.97					
225	"	"	3585.34	215.12	.44	105.37		320.93					
235	"	"	3593.70	215.62	.46	104.91		320.99					
245	"	"	3601.82	216.11	.48	104.16		320.75					
255	"	"	3602.96	216.18	.50	104.42		321.10	?				
265	"	"	3609.04	216.55	.52	103.96		321.03	?				
275	"	"	3615.25	216.92	.54	103.49		320.45					
285	"	"	3621.78	217.31	.56	103.10		320.97					
295	35	"	3636.75	218.21	.58	102.82		321.61					
305	"	"	3641.76	218.51	.60	102.54		321.65					
315													
325													
335	35	305	3648.14	218.89	.62	102.06		321.55					
345	35	305	3658.22	219.13	.60	101.68		321.41	?				
355	35	305	3656.55	219.39	.60	101.59		321.58					
365													
15	37	325	3627.03	217.62	.02	104.05		321.69	?				
25	"	"	3625.03	217.50	.04	104.06		321.60					
35	"	"	3625.14	217.54	.06	104.06		321.63					
45	"	"	3625.76	217.55	.08	103.67		321.50					
55	"	"	3621.75	217.31	.10	104.35		321.76	?				
65	"	"	3620.30	217.22	.12	104.08		321.42	?				
75	"	"	3618.50	217.13	.14	104.34		321.62					
85	"	"	3617.26	217.04	.16	104.35		321.65					
95	"	"	3614.98	216.90	.18	104.36		321.44	?				

AREA DYNASTY, YUKON

ROVING EXPLORATION

PARTY GR #1

CLIENT FRONTIER EXPL. LTD.

GRAVITY COMPUTATION SHEET

PARTY CHIEF _____

ELEVATION CORRECTION FACTOR 0.60

PROSPECT CORRECTION _____

MG

COMP. BY _____

CHK. BY _____

STA. NO.	BOOK PAGE	GRID.	ELEV.	ELEV. CORR.	LAT. CORR.	OBS. GRAV.	TERR. CORR.	BOUG. GRAV.	NO.	RECHECK OBS. GRAV.	BOUG. GRAV.	DATE RUN	DATE RECHECK
10 S	36	36E	3613.14	216.82	.20	104.36		321.38		?			
11 S	"	"	3611.74	216.70	.20	104.74		321.60					
12 S	"	"	3609.63	216.58	.24	104.92		321.74					
13 S	"	"	3608.34	216.50	.16	104.94		321.70					
14 S	"	"	3607.36	216.26	.26	105.30		321.84					
15 S	"	"	3601.42	216.09	.30	105.22		321.61		?			
16 S	"	"	3601.12	216.07	.30	105.41		321.80					
17 S	"	"	3600.16	216.01	.34	105.13		321.48		?			
18 S	"	"	3602.26	216.14	.36	105.13		321.63					
19 S	"	"	3602.43	216.15	.37	105.04		321.57					
20 S	"	"	3604.98	216.30	.40	105.04		321.74					
21 S	"	"	3608.90	216.53	.42	104.58		321.53		?			
22 S	"	"	3615.07	216.90	.44	104.39		321.73					
23 S	"	"	3619.62	217.18	.46	104.02		321.66					
24 S	35	"	3628.97	217.24	.46	103.27		321.49					
25 S	"	"	3632.44	217.95	.50	103.27		321.52					
26 S	"	"	3639.70	218.35	.52	102.80		321.67					
27 S	"	"	3642.98	218.58	.54	102.52		321.64					
28 S	"	"	3651.01	219.00	.56	101.95		321.57					
29 S	"	"	3656.54	219.39	.57	101.59		321.56					
30 S	"	"	3660.50	219.62	.60								
1 S	37	40E	3643.82	218.83	.02	102.83		321.48		?			
2 S	"	"	3642.86	218.52	.04	103.01		321.57					
3 S	"	"	3643.50	218.61	.06	103.01		321.68					
4 S	"	"	3641.44	218.49	.08	103.20		321.77					
5 S	"	"	3640.51	218.43	.10	103.20		321.7		?			
6 S	"	"	3639.69	218.39	.12	103.20		321.71					
7 S	"	"	3638.01	218.28	.14	103.30		321.72					
8 S	38	"	3636.71	218.20	.16	103.30		321.66					
9 S	"	"	3634.12	218.05	.18	103.30		321.53		?			
10 S	"	"	3631.90	217.91	.20	103.76		321.87					
11 S	"	"	3629.73	217.78	.22	103.95		321.95					
12 S	"	"	3627.12	217.63	.24	104.06		321.93					
13 S	"	"	3624.39	217.46	.26	104.14		321.86					
14 S	"	"	3622.51	217.35	.28	104.14		321.77					
15 S	"	"	3622.80	217.32	.30	104.05		321.72					
16 S	"	"	3623.16	217.39	.32	104.06		321.77					
17 S	"	"	3622.81	217.33	.34	104.04		321.71					
18 S	"	"	3623.39	217.40	.36	103.95		321.71					
19 S	"	"	3625.26	217.52	.38	103.95		321.85					
20 S	"	"	3631.82	217.91	.40	103.38		321.73					
21 S	"	"	3636.02	218.16	.42	103.20		321.78					
22 S	"	"	3640.56	218.45	.44	102.83		321.72					
23 S	"	"	3646.75	218.81	.46	102.96		321.63					
24 S	39	"	3653.36	219.20	.48	101.97		321.65					
25 S	"	"	3657.26	219.44	.50	101.79		321.73					
26 S	"	"	3662.20	219.73	.52	101.51		321.76		?			
27 S	"	"	3667.21	220.03	.54	101.13		321.70					
28 S	"	"	3674.35	220.46	.56	100.67		321.69					

12

AREA DYNASTY YUKON

ROVING EXPLORATION

PARTY GP. #1

CLIENT FRONTIER EXPL. LTD. GRAVITY COMPUTATION SHEET

PARTY CHIEF _____

ELEVATION CORRECTION FACTOR .060 PROSPECT CORRECTION 100.00 MG

COMP. BY _____ CHK. BY _____

STA. NO.	BOOK PAGE	GRID.	ELEV.	ELEV. CORR.	LAT. CORR.	OBS. GRAV.	TERR. CORR.	BOUG. GRAV.	NO.	RECHECK OBS. GRAV.	BOUG. GRAV.	DATE RUN	DATE RECHECK
295	29	40E	3682.81	220.97	.58	100.19		321.73					
325	"	"	3688.76	221.33	.60	99.72		321.65					
315	"	"	3695.69	221.24	.62	99.31		321.70					
41E	"	31S	3701.09	222.07	.62	98.98		321.67					
42E	"	31S	3709.03	222.54	.61	98.60		321.75					
43E	"	31S	3713.93	222.84	.60	98.32		321.76					
15.	41	44E	3657.22	219.93	.04	102.26		321.71		?			
25.	"	"	3656.31	219.38	.04	102.35		321.77					
35.	"	"	3658.55	219.51	.06	102.26		321.83					
45	"	"	3657.26	219.44	.09	102.26		321.78					
55	"	"	3657.54	219.45	.10	102.36		321.91					
65	"	"	3656.66	219.40	.12	102.36		321.88					
75	"	"	3655.84	219.35	.11	102.35		321.84		?			
85	"	"	3655.00	219.30	.16	102.54		322.00					
95	"	"	3654.07	219.24	.19	102.44		321.91					
105	"	"	3652.16	219.13	.20	102.44		321.77					
115	"	"	3651.10	219.02	.22	102.67		321.92					
125	"	"	3648.37	218.90	.24	102.97		322.06		?			
135	"	"	3646.08	218.26	.26	102.92		321.94		?			
145	"	"	3644.13	218.65	.27	103.20		322.13		?			
155	"	"	3642.49	218.55	.30	103.01		321.86					
165	"	"	3644.83	218.69	.32	102.83		321.84					
175	"	"	3644.70	218.68	.34	102.83		321.85					
185	"	"	3643.51	218.61	.36	102.83		321.80					
195	"	"	3650.10	219.01	.58	102.36		321.75					
205	40	"	3651.97	219.12	.40	102.36		321.88					
215	"	"	3659.80	219.59	.42	101.98		321.89					
225	"	"	3665.85	219.95	.44	101.51		321.90					
235	"	"	3669.61	220.18	.46	101.22		321.88					
245	"	"	3673.53	220.41	.48	100.94		321.83					
255	"	"	3680.93	220.86	.50	100.67		322.03					
265	"	"	3689.39	221.36	.52	100.00		321.88					
275	"	"	3691.68	221.50	.54	99.82		321.86					
285	"	"	3698.79	221.93	.56	99.43		321.92					
295	"	"	3706.88	222.41	.58	98.78		321.77					
305	"	"	3711.53	222.69	.60	98.50		321.79					
15	42	48E	3666.54	219.99	.02	101.59		321.60					
25	"	"	3665.36	219.92	.04	101.87		321.83					
35	"	"	3667.52	220.05	.06	101.87		321.98					
45	"	"	3665.82	219.95	.08	101.68		321.71		?			
55	"	"	3666.12	219.97	.10	101.68		321.75					
65	"	"	3665.95	219.96	.12	101.68		321.78					
75	"	"	3666.55	219.99	.14	101.68		321.88					
85	"	"	3667.57	220.05	.16	101.67		321.88					
95	"	"	3669.18	220.15	.18	101.67		322.00					
105	"	"	3670.16	220.20	.20	101.48		321.88					
115	"	"	3672.47	220.35	.22	101.29		321.86					

AREA DYNASTY YUKON

ROVING EXPLORATION

PARTY Gr. #1

CLIENT FRONTIER EXPL. LTD.

GRAVITY COMPUTATION SHEET

PARTY CHIEF _____

ELEVATION CORRECTION FACTOR .660

PROSPECT CORRECTION 100.00 MG

COMP. BY _____ CHK. BY _____

STA. NO.	BOOK PAGE	GRID.	ELEV.	ELEV. CORR.	LAT. CORR.	OBS. GRAV.	TERR. CORR.	BOUG. GRAV.	NO.	RECHECK OBS. GRAV.	BOUG. GRAV.	DATE RUN	DATE RECHECK
125	42	48E	3671.42	220.29	.24	101.29		321.82					
135	"	"	3671.79	220.31	.26	101.20		321.77					
145	"	"	3670.97	220.26	.28	101.39		321.93					
155	"	"	3669.93	220.20	.30	101.38		321.88					
165	"	"	3670.51	220.23	.32	101.19		321.94					
175	"	"	3672.90	220.33	.34	101.11		321.78					
185	"	"	3675.43	220.52	.36	100.81		321.64					
195	"	"	3681.54	220.86	.38	100.49		321.68					
205	43	"	3687.04	221.22	.40	100.19		321.81					
215	"	"	3693.99	221.64	.42	99.59		321.65					
225	"	"	3698.99	221.94	.44	99.21		321.59					
235	"	"	3704.93	222.30	.46	99.02		321.78					
245	"	"	3710.82	222.65	.48	98.56		321.69					
255	"	"	3716.46	222.99	.50	98.27		321.78					
265	"	"	3722.04	223.32	.52	97.89		321.73					
275	"	"	3727.52	223.72	.54	97.33		321.64					
285	"	"	3733.94	224.04	.56	97.23		321.83					
295	"	"	3741.12	224.47	.58	96.85		321.90					
305	"	"	3746.15	224.72	.60	96.67		322.04					
20+35	"	"	3748.81	224.93	.61	95.7							
49E	44	50E	3759.43	225.57	.61	95.73		321.91					
50E	"	"	3767.92	226.08	.61	95.25		321.94					
51E	"	"	3776.34	226.58	.61	94.77		321.96					
15	46	52E	3681.12	220.89	.07	100.85		321.74					
25	"	"	3686.16	220.87	.1	100.94		321.79					
35	"	"	3679.99	220.80	.06	101.04		321.90					
45	"	"	3679.76	220.29	.09	101.04		321.90					
55	"	"	3679.42	220.22	.10	101.04		321.91					
65	"	"	3682.06	220.92	.12	101.04		322.08					
75	"	"	3680.74	220.89	.14	101.04		322.02					
85	"	"	3682.32	220.91	.16	100.86		321.96					
95	45	"	3685.20	221.11	.18	100.68		321.97					
105	"	"	3689.16	221.35	.20	100.39		321.94					
115	"	"	3691.17	221.91	.22	100.11		321.80 ?					
125	"	"	3693.93	221.64	.24	100.11		321.99					
135	"	"	3696.61	221.80	.26	99.91		321.97					
145	"	"	3693.84	221.93	.28	99.75		321.96					
155	"	"	3698.63	221.92	.30	99.74		321.94					
165	"	"	3710.02	222.00	.32	99.55		321.87					
175	"	"	3694.79	221.99	.34	99.37		321.70 ?					
185	"	"	3702.93	222.18	.36	99.25		321.79					
195	"	"	3710.93	222.66	.38	99.09		322.13					
205	"	"	3717.57	222.69	.40	98.80		321.89					
215	"	"	3727.92	223.07	.42	98.43		321.92					
225	"	"	3726.02	223.56	.44	97.87		321.87					
235	44	"	3733.59	224.01	.46	97.57		322.04					
245	"	"	3738.13	224.29	.48	97.21		321.98					
255	"	"	3741.84	224.51	.50	96.74		321.85 ?					

AREA UNIVERSITY TOWN

ROVING EXPLORATION

PARTY Gr. #1

CLIENT FRONTIER EXPLORATION GRAVITY COMPUTATION SHEET

PARTY CHIEF _____

ELEVATION CORRECTION FACTOR .660 PROSPECT CORRECTION 100.00 MG

COMP. BY _____ CHK. BY _____

STA. NO.	BOOK PAGE	GRID.	ELEV.	ELEV. CORR.	LAT. CORR.	OBS. GRAV.	TERR. CORR.	BOUG. GRAV.	NO.	RECHECK OBS. GRAV.	BOUG. GRAV.	DATE RUN	DATE RECHECK
265	44	52E	3752.38	225.14	.52	96.27		321.93					
275	"	"	3755.14	225.31	.54	96.09		321.99		Recheck			
285	"	"	3761.44	225.69	.56	95.81		322.06					
295	"	"	3767.13	226.03	.56	95.52		322.13					
305	"	"	3775.45	226.53	.60	94.77		321.90					
315	"	"	3778.33	226.70	.61			321.39					
15	46	56E	3697.17	221.85	.02	100.19		322.06					
25	"	"	3697.17	221.83	.04	100.18		322.05					
35	"	"	3696.30	221.78	.06	100.19		322.03					
45	"	"	3695.49	221.73	.08	100.19		322.00					
55	"	"	3695.99	221.76	.10	100.11		322.05					
65	"	"	3696.15	221.77	.12	100.19		322.08					
75	"	"	3697.36	221.84	.14	100.19		322.17					
85	"	"	3700.40	222.02	.16	99.89		322.07					
95	"	"	3703.66	222.30	.18	99.60		322.08					
105	47	"	3708.69	222.52	.20	99.33		322.05					
115	"	"	3711.09	222.85	.22	99.94		322.01					
125	"	"	3719.61	223.18	.24	98.49		321.91					
135	"	"	3722.86	223.38	.26	98.51		322.02					
145	"	"	3726.62	223.60	.28	98.19		322.07					
155	"	"	3730.61	223.34	.30	97.81		321.95					
165	"	"	3735.25	224.11	.32	97.81		322.24					
175	"	"	3735.58	224.14	.34	97.69		322.10					
185	"	"	3735.26	224.12	.36	97.62		322.10					
195	"	"	3735.67	224.14	.38	97.69		322.14					
205	"	"	3745.37	224.43	.40	96.93		321.90					
215	"	"	3749.23	224.95	.42	96.71		322.16					
225	"	"	3755.15	225.31	.44	96.40		322.15					
235	48	"	3760.78	225.65	.46	95.95		322.01					
245	"	"	3770.25	226.22	.48	95.95		322.15		?			
255	"	"	3778.87	226.73	.50	94.99		322.21					
265	"	"	3786.04	227.16	.52	94.51		322.19					
275	"	"	3791.61	227.50	.54	94.22		322.26		?			
285	"	"	3800.59	228.04	.56	93.56		322.13					
295	"	"	3807.53	228.45	.58	93.10		322.13					
305	"	"	3811.72	228.70	.60	92.72		322.02					
57E	49	30S	3822.31	229.34	.60	92.25		322.19					
58E	"	"	3832.81	229.97	.60	91.68		322.25					
59E	"	"	3847.64	230.86	.60	90.83		322.29					
15	51	60E	3711.17	222.85	.04	98.97		321.84		?			
25	"	"	3712.74	222.70	.04	99.26		322.06					
35	"	"	3710.73	222.61	.06	99.35		322.02		?			
45	"	"	3711.99	222.72	.08	99.35		322.15					
58	"	"	3714.17	222.85	.10	99.16		322.11					
65	"	"	3715.57	222.94	.12	99.16		322.22					
75	"	"	3718.81	223.13	.14	98.77		322.04					
85	"	"	3724.88	223.25	.16	98.70		322.04					

AREA DYNASTY YUKON

ROVING EXPLORATION

PARTY GR. #1

CLIENT FRONTIER EXPL. LTD. GRAVITY COMPUTATION SHEET

PARTY CHIEF _____

ELEVATION CORRECTION FACTOR .060 PROSPECT CORRECTION 100.00 MG

COMP. BY _____ CHK. BY _____

STA. NO.	BOOK PAGE	GRID.	ELEV.	ELEV. CORR.	LAT. CORR.	OBS. GRAV.	TERR. CORR.	BOUG. GRAV.	NO.	RECHECK OBS. GRAV.	BOUG. GRAV.	DATE RUN	DATE RECHECK
95	51	405	372686	223.61	.18	98.92		322.21					
105	50	"	3734.06	224.04	.20	97.76		322.00					
115	"	"	3740.92	224.15	.22	97.57		322.21					
125	"	"	374540	224.72	.24	97.20		322.16					
135	"	"	3751.68	225.10	.26	97.57		322.19	2				
145	"	"	3757.25	225.43	.28	96.11		322.15					
155	"	"	3763.48	225.81	.30	95.98		322.09	2				
165	"	"	3768.13	226.09	.32	95.70		322.11					
175	"	"	3771.91	226.32	.34	95.60		322.26					
185	"	"	3777.09	226.62	.36	95.22		322.21					
195	"	"	3780.82	226.85	.38	94.86		322.04					
205	"	"	3784.16	227.05	.40	94.86		322.31					
215	"	"	3789.05	227.37	.42	94.48		322.16					
225	49	"	3794.68	227.68	.44	94.11		322.23	?				
235	"	"	3798.11	227.82	.46	92.92		322.26					
245	"	"	3803.11	228.19	.48	93.64		322.31					
255	"	"	3811.94	228.72	.50	93.08		322.30					
265	"	"	3819.25	229.14	.52	92.51		322.17	?				
275	"	"	3826.54	229.59	.54	91.68		321.81	?				
285	"	"	3835.29	230.11	.56	91.30		321.97					
295	"	"	3844.39	230.66	.58	90.83		322.07					
305	"	"	3857.90	231.47	.60	90.17		322.24					
15	51	142	3735.19	224.11	.22	98.02		322.15					
25	"	"	3733.95	224.04	.24	98.02		322.10					
35	"	"	3733.90	224.03	.26	106.62		330.76					
45	"	"	3737.27	224.24	.28	106.29		330.61					
55	52	"	3733.60	224.02	.30	106.52		330.69					
65	"	"	3732.75	223.97	.32	106.52		330.66					
75	"	"	3741.69	224.50	.34	97.65		322.29					
85	"	"	3746.65	224.80	.36	97.45		322.41					
95	"	"	3752.47	225.15	.38	97.08		322.41					
105	"	"	3759.76	225.59	.40	96.61		322.40					
115	"	"	3765.69	225.94	.42	96.24		322.40					
125	"	"	3773.89	226.43	.44	95.68		322.35					
135	"	"	3784.76	227.09	.46	95.02		322.37					
145	"	"	3794.50	227.67	.48	94.45		322.40					
155	"	"	3801.78	228.11	.50	93.98		322.34					
165	"	"	3809.89	228.59	.52	93.51		322.42					
175	"	"	3818.57	229.11	.54	92.85		322.30					
185	53	"	3826.87	229.61	.56	92.39		322.36					
195	"	"	3834.46	230.07	.58	91.83		321.92					
205	"	"	3842.20	230.53	.60	91.45		322.38					
215	"	"	3843.67	230.62	.62	91.15		322.49					
225	"	"	3848.87	230.93	.64	91.16		322.53					
235	"	"	3843.37	230.60	.66	90.88		321.94					
245	"	"	3859.99	231.56	.68	90.41		322.45					
255	"	"	3864.07	231.84	.70	90.14		322.75					
265	"	"	3868.69	232.12	.72	89.81		322.78					
275	"	"	3876.58	232.59	.74	89.29		322.42					

AREA DYNASTY YUKON

ROVING EXPLORATION

PARTY GR. #1

CLIENT FARMER 5478 178 GRAVITY COMPUTATION SHEET

PARTY CHIEF _____

ELEVATION CORRECTION FACTOR .660 PROSPECT CORRECTION 100.00 MG

COMP. BY _____ CHK. BY _____

STA. NO.	BOOK PAGE	GRID.	ELEV.	ELEV. CORR.	LAT. CORR.	OBS. GRAV.	TERR. CORR.	BOUG. GRAV.	NO.	RECHECK OBS. GRAV.	BOUG. GRAV.	DATE RUN	DATE RECHECK
28S	53	64E	3884.04	233.04	.56	8891		322.51					
29S	54	"	3889.90	232.90	.58	8848		322.45					
30S	"	"	3891.88	233.51	.60	8806		322.17					
65E	54	30S	3897.22	233.83	.59	8825		322.67					
66E	"	"	3911.48	234.67	.58	8790		322.64					
67E	"	"	3924.20	235.45	.57	8656		322.58					
1S	56	68E	3749.80	224.99	.02	10056		325.57					
2S	"	"	3752.59	225.27	.04	10027		325.69					
3S	"	"	3754.81	225.11	.06	10022		325.34	?				
4S	"	"	3756.75	225.40	.06	10029		325.77					
5S	"	"	3757.12	225.43	.10	10019		325.72					
6S	"	"	3763.09	225.79	.12	9981		325.72					
7S	"	"	3767.63	226.06	.14	9952		326.01	?				
8S	"	"	3776.55	226.59	.16	9896		325.71					
9S	"	"	3790.23	226.80	.18	9877		325.75					
10S	"	"	3790.72	227.49	.20	9811		325.75					
11S	55	"	3797.70	227.86	.22	9765		325.83					
12S	"	"	3808.58	228.51	.24	9708		325.83					
13S	"	"	3825.79	229.55	.26	9632		326.13	?				
14S	"	"	3823.49	229.41	.28	9605		325.74					
15S	"	"	3830.52	229.83	.30	9548		325.61					
16S	"	"	3832.35	230.59	.32	9482		325.68					
17S	"	"	3855.81	231.35	.34	9398		325.67					
18S	"	"	3867.85	231.89	.36	9333		325.58					
19S	"	"	3872.81	232.37	.38	9267		325.42					
20S	"	"	3876.34	232.58	.40	8928		322.26					
21S	"	"	3874.58	232.49	.42	8888		321.78	?				
22S	"	"	2277.41	232.69	.44	8853		321.61	?				
23S	"	"	3893.41	233.60	.46	8815		322.21					
24S	57	"	3898.96	233.91	.48	8728		322.17					
25S	"	"	3908.24	234.49	.50	8760		322.59					
26S	"	"	3917.00	234.84	.52	8721		322.57					
27S	"	"	3920.62	235.24	.54	8689		322.62					
28S	"	"	3930.31	235.82	.56	8627		322.65					
1S	56	72E	3783.00	226.98	.12	9539		322.39					
2S	57	"	3788.18	227.29	.14	9521		322.54					
3S	"	"	3792.70	227.59	.16	9483		322.41					
4S	"	"	3796.18	227.77	.18	9445		322.30	?				
5S	"	"	3800.17	228.01	.20	9436		322.47					
6S	"	"	3805.08	228.30	.22	9422		322.44					
7S	"	"	3810.60	228.64	.24	9379		322.57					
8S	"	"	3817.22	229.03	.26	9336		322.55					
9S	"	"	3823.16	229.39	.28	9299		322.51					
10S	"	"	3831.92	229.86	.30	9248		322.56					
11S	"	"	3841.14	230.47	.32	9191		322.60					
12S	"	"	3848.99	230.94	.34	9125		322.43	?				
13S	"	"	3857.78	231.47	.36	9079		322.52					

AREA DYNASTY YUKON
 CLIENT FRONTIER EXPL. LTD.

ROVING EXPLORATION

PARTY GR. #1

GRAVITY COMPUTATION SHEET

PARTY CHIEF _____

ELEVATION CORRECTION FACTOR .060 PROSPECT CORRECTION 10000 MG

COMP. BY _____ CHK. BY _____

STA. NO.	BOOK PAGE	GRID.	ELEV.	ELEV. CORR.	LAT. CORR.	OBS. GRAV.	TERR. CORR.	BOUG. GRAV.	NO.	RECHECK OBS. GRAV.	BOUG. GRAV.	DATE RUN	DATE RECHECK
145	58	72E	3871.11	232.27	.28	9002		322.58					
155	"	"	3882.37	232.94	.30	8937		322.61					
165	"	"	3895.22	232.72	.32	8849		322.49					
175	"	"	3907.46	234.48	.34	8760		322.92					
185	"	"	3917.96	235.08	.36	8693		322.37					
195	"	"	3927.22	235.68	.38	8646		322.50					
205	"	"	3937.99	236.29	.40	8580		322.46					
215	"	"	3948.26	236.90	.42	8506		322.38					
225	"	"	3952.96	237.17	.44	8496		322.57					
235	"	"	3959.96	237.51	.46	8468		322.68					
245	"	"	3959.52	237.57	.48	8439		322.44					
255	"	"	3962.42	237.75	.50	8430		322.46					
265	"	"	3965.94	238.11	.52	8421		322.89	?				
275	"	"	3977.39	238.61	.54	8343		322.64					
285	"	"	3983.51	239.01	.56	8307		322.64					
295	"	"	3990.11	239.41	.58	8261		322.60					
73E	59	285	4001.49	240.09	.56	8195		322.60					
72E	"	"	4016.29	240.98	.56	8101		322.55					
75E	"	"	4030.85	241.96	.56	8025		322.67					
15	62	76E	3811.93	228.72	.07	9379		322.58					
25	"	"	3816.06	228.96	.08	9360		322.60					
35	61	"	3823.80	229.93	.06	9313		322.60					
45	"	"	3828.94	229.94	.08	9226		322.58					
55	"	"	3835.22	230.11	.10	9257		322.78					
65	"	"	3841.93	230.52	.12	9200		322.64					
75	"	"	3848.22	230.92	.14	9144		322.50					
85	"	"	3852.57	231.15	.16	9125		322.56					
95	"	"	3861.98	231.72	.18	9088		322.78					
105	"	"	3871.64	232.30	.20	9014		322.64	?				
115	"	"	3881.90	232.91	.22	8956		322.59	.68				
125	"	"	3897.03	233.82	.24	8862		322.68					
135	60	"	3907.07	234.42	.26	8805		322.73					
145	"	"	3919.95	235.20	.28	8702		322.50					
155	"	"	3935.91	236.03	.30	8608		322.41					
165	"	"	3946.91	236.91	.32	8533		322.46	?				
175	"	"	3958.28	237.50	.34	8458		322.42					
185	"	"	3970.61	238.24	.36	8382		322.42					
195	"	"	3986.71	239.20	.38	8308		322.66					
205	"	"	3997.07	239.82	.40	8233		322.55					
215	"	"	4008.58	240.51	.42	8157		322.50					
225	"	"	4015.76	240.95	.44	8101		322.40	?				
235	"	"	4021.54	241.29	.46	8082		322.57					
245	"	"	4027.45	241.65	.48	8059		322.67					
255	59	"	4029.61	241.77	.50	8020		322.97					
265	"	"	4030.56	241.83	.52	8020		322.05	?				
275	"	"	4037.31	242.24	.54	7988		322.66					
285	"	"	4041.68	242.50	.56	7960		322.66					
295	"	"	4045.22	242.71	.58	7941		322.70					

AREA DYNASTY, YUKON

ROVING EXPLORATION

PARTY GR. #1

CLIENT ROBERTS EXPL. LTD. GRAVITY COMPUTATION SHEET

PARTY CHIEF _____

ELEVATION CORRECTION FACTOR .060 PROSPECT CORRECTION 100.00 MG

COMP. BY _____ CHK. BY _____

STA. NO.	BOOK PAGE	GRID.	ELEV.	ELEV. CORR.	LAT. CORR.	OBS. GRAV.	TERR. CORR.	BOUG. GRAV.	NO.	RECHECK OBS. GRAV.	BOUG. GRAV.	DATE RUN	DATE RECHECK
1S	1	80E	3834.30	232.00	.07	92.56		322.64					
2S	"	"	3843.70	232.60	.07	92.03		322.66					
3S	"	"	3851.51	231.09	.06	91.49		322.58					
4S	"	"	3860.45	230.41	.07	90.81		321.57					
5S	"	"	3867.25	232.05	.10	90.51		322.72					
6S	"	"	3876.25	232.58	.12	89.91		322.54					
7S	"	"	3882.70	233.08	.14	89.27		322.49					
8S	"	"	3895.10	233.70	.16	87.56		323.42					
9S	"	"	3906.20	234.37	.18	88.05		322.60					
10S	"	"	3918.40	235.10	.20	87.22		322.52					
11S	2	"	3931.90	235.91	.22	86.46		322.60	?				
12S	"	"	3944.31	236.66	.24	85.52		322.42					
13S	"	"	3955.20	237.32	.26	84.86		322.44					
14S	"	"	3968.27	238.10	.28	83.91		322.29					
15S	"	"	3980.91	238.85	.30	83.16		322.31					
16S	"	"	3994.150	239.67	.32	82.40		322.39	?				
17S	"	"	4011.93	240.72	.34	81.29		322.35	?				
18S	"	"	4029.53	241.77	.36	80.25		322.38	?				
19S	"	"	4048.85	242.93	.39	78.83		322.14	?				
20S	"	"	4065.95	243.96	.40	77.80		322.16					
21S	"	"	4079.30	244.76	.42	77.06		322.24					
22S	3	"	4093.12	245.61	.44	76.50		322.35					
23S	"	"	4104.47	246.27	.46	75.87		322.37					
24S	"	"	4110.31	246.62	.48	75.36		322.46					
25S	"	"	4114.44	246.87	.50	75.17		322.54					
26S	"	"	4118.41	247.10	.52	74.79		322.41					
27S	"	"	4121.82	247.31	.54	74.69		322.54					
28S	"	"	4122.67	247.36	.56	74.69		322.61					
29S	"	"	4122.17	247.33	.58	74.87		322.78					
81E	3	29S	4134.70	248.08	.58	74.03		322.69					
82E	"	"	4146.97	248.82	.58	73.28		322.68					
83E	"	"	4159.52	249.57	.58	72.53		322.68					
1S	6	84E	3849.50	230.97	.02	91.68		322.67					
2S	"	"	3859.56	231.57	.04	91.31		322.92					
3S	"	"	3871.73	232.31	.06	90.56		322.95					
4S	"	"	3882.93	233.33	.07	89.81		323.22	"				
5S	"	"	3893.21	233.59	.10	89.96		322.65	"				
6S	"	"	3912.51	234.75	.12	88.59		323.42					
7S	5	"	3921.96	235.32	.14	87.73		322.19					
8S	"	"	3930.63	235.80	.16	86.70		322.66					
9S	"	"	3942.71	236.56	.18	85.85		322.59					
10S	"	"	3952.58	237.15	.20	85.18		322.83	?				
11S	"	"	3966.21	237.97	.22	84.46		322.60					
12S	"	"	3979.47	238.77	.24	83.61		322.62					
13S	"	"	3994.71	239.68	.26	82.57		322.51					
14S	"	"	4006.33	240.38	.28	81.73		322.39					
15S	"	"	4021.07	241.26	.30	80.79		322.33					
16S	"	"	4037.30	242.24	.32	79.76		322.32					

AREA DYNASTY YUKON

ROVING EXPLORATION

PARTY GR #1

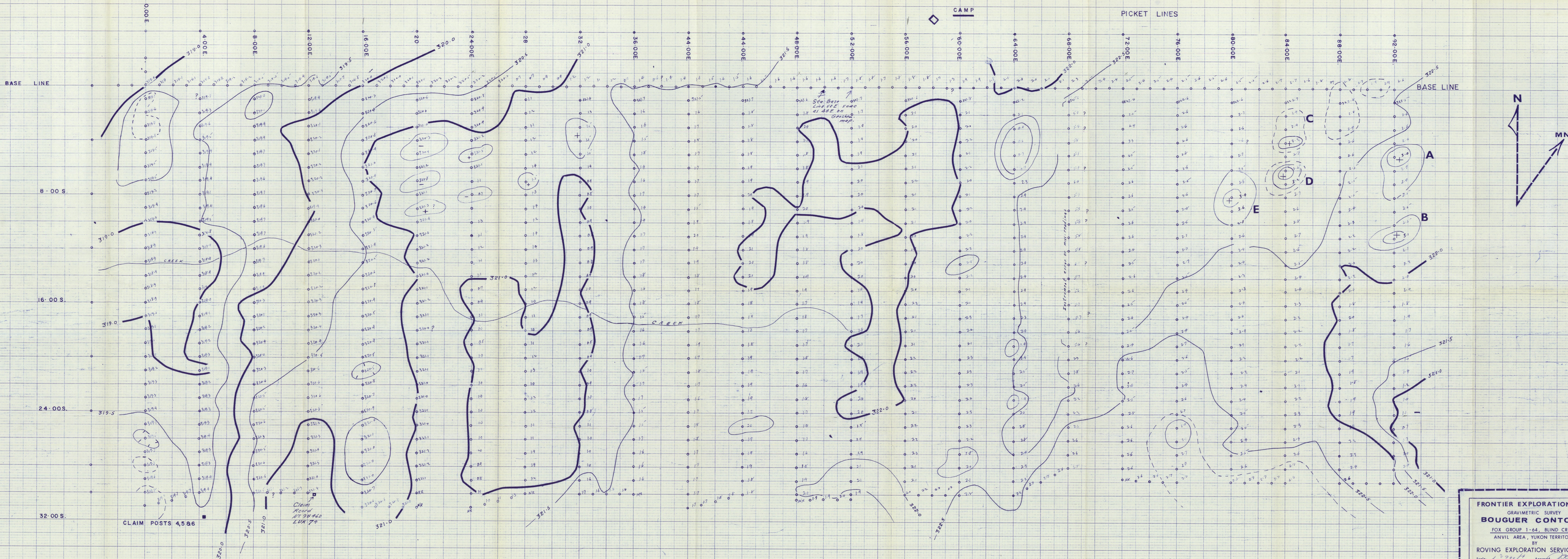
CLIENT FRONTIER EXPLORATION GRAVITY COMPUTATION SHEET

PARTY CHIEF _____

ELEVATION CORRECTION FACTOR .060 PROSPECT CORRECTION 100.00 MG

COMP. BY _____ CHK. BY _____

STA. NO.	BOOK PAGE	GRID.	ELEV.	ELEV. CORR.	LAT. CORR.	OBS. GRAV.	TERR. CORR.	BOUG. GRAV.	NO.	RECHECK OBS. GRAV.	BOUG. GRAV.	DATE RUN	DATE RECHECK
175	4	81E	4054.38	243.26	34	78.63		322.27					
185	"	"	4074.28	244.46	36	77.40		322.24					
195	"	"	4093.28	245.60	36	76.19		322.17					
205	"	"	4112.98	246.75	32	74.87		322.05					
215	"	"	4128.26	247.70	32	73.93		322.05					
225	"	"	4141.84	248.51	32	73.17		322.12					
235	"	"	4152.38	249.14	32	72.62		322.20					
245	"	"	4159.83	249.59	32	72.25		322.32					
255	"	"	4167.60	249.87	32	71.96		322.35					
265	"	"	4168.50	250.11	32	71.78		322.51					
275	"	"	4171.66	250.30	32	71.79		322.64					
285	"	"	4172.35	250.35	32	71.78		322.64					
295	3	"	4171.20	250.27	32	71.87		322.72					
15	7	88E	3888.82	233.10	07	89.71		322.83					
25	"	"	3890.91	233.45	04	89.38		322.82					
35	"	"	3898.65	233.92	06	88.88		322.86					
45	"	"	3909.71	234.59	08	87.92		322.59					
55	"	"	3921.20	235.45	10	87.07		322.62					
65	"	"	3932.70	236.26	12	86.13		322.51					
75	"	"	3951.22	237.07	14	85.29		322.50					
85	"	"	3969.40	238.17	16	84.15		322.48					
95	"	"	3990.00	239.40	18	82.84		322.42					
105	8	"	4005.81	240.33	20	81.81		322.37					
115	"	"	4022.35	241.46	22	80.49		322.17					
125	"	"	4044.29	242.66	24	79.27		322.17					
135	"	"	4061.15	243.67	26	78.05		321.98					
145	"	"	4076.65	244.60	28	77.29		322.17					
155	"	"	4095.32	245.76	30	75.97		322.03					
165	"	"	4116.00	246.97	32	74.98		321.77					
175	"	"	4135.00	248.11	34	73.53		321.98					
185	"	"	4161.23	249.67	36	71.49		321.77					
195	"	"	4185.51	251.13	38	70.19		321.65					
205	"	"	4209.14	252.54	40	68.73		321.67					
215	9	"	4229.82	253.79	42	67.70		321.91					
225	"	"	4253.50	255.20	44	66.19		321.82					
235	"	"	4270.18	256.21	46	64.98		321.85					
245	"	"	4273.70	256.42	47	64.47		321.87					
255	"	"	4272.10	256.36	50	65.25		322.11					
265	"	"	4270.70	256.25	52	65.43		322.20					
275	"	"	4268.70	256.12	54	65.63		322.29					
285	"	"	4260.59	255.64	56	66.19		322.39					
295	"	"	4252.01	255.12	58	66.65		322.55					
89E	9	295	4268.59	256.10	58	65.72		322.40					
90E	10	"	4281.78	257.09	58	64.51		322.21					
91E	10	"	4302.11	258.13	58	63.47		322.18					



FRONTIER EXPLORATIONS LTD
 GRAVIMETRIC SURVEY
BOUGUER CONTOURS
 FOX GROUP 1-64, BLIND CREEK
 ANVIL AREA, YUKON TERRITORY
 BY
ROVING EXPLORATION SERVICES LTD.
 Scale 1:20,000 Approved: [Signature]
 Contour Interval: 0.5mgals Oct, 1967

GRAVITY SURVEY REPORT

on

FOX CLAIMS DYNASTY AREA, YUKON

for

FRONTIER EXPLORATIONS LTD.

by

N. Rothenburg, P.Geol.

Roving Exploration Services Ltd.

December, 1967

In the study conducted by the writer of the Bouguer Gravity data for the Fox Claims, attention has been directed to the eastern portion of the report area since this appears to be the most interesting in terms of anomalous gravity indications.*

BOUGUER GRAVITY MAP

A well-defined low gravity trend proceeds (from the location 92.00E - 2,250 ft. south) in a northwesterly direction and undergoes separation into dominantly west and north sub-trends.

Local areas of anomalous positive gravity expression are noted to bear a general peripheral relation to the central low feature and are described below:

A. The elongated feature trending northeast-southwest and straddles survey traverse lines 80.00E, 84.00E and 88.00E within the ranges 0 to 1,000 ft. south of the base line.

B. An incipient anomaly in the northeast corner of the prospect which is considered to develop beyond the eastern boundary.

C. The isometric anomaly between traverse lines 72.00E and 76.00E and located 2,500 ft. south of the base line.

Anomaly A is by far the most attractive in terms of potential economic significance and has been singled out for further quantitative treatment.

RESIDUAL GRAVITY

Despite a certain erratic behavior of the Bouguer gravity values, in part due to extreme changes in topographic relief, an attempt was made to establish a residual gravity expression for the 'A' anomaly. Examination of the profiles shows the regional gravity level introduced, and the consequent residual values (dashed line) assigned to the 'A' anomaly. The same information appears on the residual gravity map and this evidence points strongly to the presence of an ore body with strike dimension of approximately 600 ft. in a northeast-southwest direction, and vein width approaching 100 ft. Minor subsidiary features are noted to be associated with the main anomaly, to the north and south. There is a good likelihood that faulting bounds the main anomaly on the north and south flanks to effect separation between the subsidiary features.

ANOMALY DEPTH DETERMINATION

Three independent approaches were employed to arrive at probable depth estimates for the 'A' anomaly. These relate to the Half-width Maximum horizontal gradient, and Residual curve integration methods. Good agreement was obtained between the above methods and the depth to the anomalous body falls within the ranges 80-100 ft. sub datum.

TONNAGE ESTIMATE

An areal integration of the overall residual anomaly for the 'A' feature yielded an anomalous mass of 305,000 long tons. The actual mass, which is of more direct interest from a mining point of view, is related to anomalous mass by the following equation:

$$\text{Actual mass} = \frac{P_2}{P_2 - P_1} \times M$$

where M denotes anomalous mass

P₂ denotes Density of ore body

P₁ denotes Density of host rock.

Hence assuming that P₁ = 2.67 and P₂ = 5.34, the latter being a reasonable figure for a lead-zinc orebody, we obtain a figure of

610,000 long tons

for the orebody, which also includes the subsidiary anomalies associated with the main feature indicated on the residual gravity map.

RECOMMENDATIONS

A core drill program to evaluate the most significant 'A' anomaly is strongly recommended. An initial location on traverse line 84.00E between stations 6 and 7 is favoured. Further testing of this anomaly should be conducted by core-hole positions arranged along the strike axis of the anomaly to be followed by additional tests on line 84.00E at stations 4 and 10. In the event of encouraging