

CONFIDENTIAL

REPORT
GEOLOGICAL INVESTIGATION & RECONNAISSANCE
OF
THE "HOY" GROUP OF MINERAL CLAIMS
FOR
ALATOR CORPORATION LTD., TORONTO, Ontario.

TABLE OF CONTENTS

1. Covering Letter - L. G. White, P.Eng.
2. Geological Report - H. M. Powell, M.E.
3. Appendix to H. M. Powell's Report, by L. G. White.
4. Expense Summary.
5. Appendix.
 - (a) Geological Map of Claims.
 - (b) Sketch Plan - Magnetic Anomaly.

VANCOUVER, B.C.,
December 7, 1954.

- - -

Vancouver, B.C.,
December 7, 1954.

Mining Recorder,
Department of Northern Affairs & Natural Resources,
Whitehorse, Y.T.

Dear Sir:

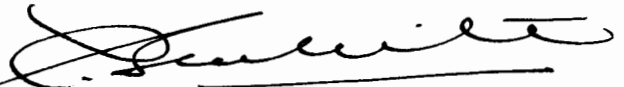
We submit herewith our report covering a complete geological reconnaissance and survey of the HOY Group of Mineral Claims, Pelly River area, Y.T.

Two maps are included with the report -- one containing information on all rock types exposed in the area bounded by the claims, and the other showing details of the preliminary work accomplished with a dip needle and a magnetometer. Insufficient time did not permit completion of a magnetometer survey; however, enough favourable results were indicated to warrant further investigation next year.

Work was conducted over two separate periods of time during the summer. The claim survey and part of the geological reconnaissance were completed during the latter part of July. The geophysical work was carried out during the last week in September and the first week in October. The crew was under direction of a qualified Mining Engineer, two experienced prospectors and two students. Packhorses were used to supply the camp.

Grouping Notices and Affidavits in application for Certificates of Work to be granted under Section 54 (2B) of the Yukon Quartz Mining Act, are submitted herewith, together with our cheque in the amount of one hundred and thirty dollars (\$130.00) covering recording fees.

Yours very truly,



L. G. White, P. Eng.,
Agent for George Scott, in Trust,
Alator Corporation Limited,
TORONTO, Ontario.

IGW/hc.
enc.

CONFIDENTIAL

REPORT

ON

THE "HOT" GROUP OF MINERAL CLAIMS

PELLY RIVER DISTRICT, YUKON TERRITORY.

VANCOUVER, B.C.,
December 7, 1954.

BY:- H. M. Powell,
Mining Engineer.

CONFIDENTIAL

REPORT

ON

THE "HOY" GROUP OF MINERAL CLAIMS

PELLY RIVER DISTRICT, YUKON TERRITORY.

PREFACE:

This report is to be classified as a geological investigation, as per Section 54-2B of the Yukon Quartz Mining Act.

The work was accomplished by a party of four men in two periods -- from July 16th to August 2nd and from September 20th to October 10th, of this year.

The crew and equipment were moved from the base at Jackknife Lake to a campsite situated by a small lake on the No. 19 HOY Mineral Claim in the Pelly River valley. This necessitated cutting trail from Blind Creek to the camp, a distance of three and one-half miles.

Supplies were flown from Whitehorse, Y.T. to Jackknife Lake, reloaded on packhorses and thence to the campsite.

As a basis for the geological work, lines were cut and were surveyed by compass and tape; moreover, all location posts were duly tagged.

The geology was mapped by cross-cruising to locate outcrops and by pacing to claim boundaries.

During October, a dip needle and magnetometer survey was made of a section on the HOY Nos. 23 and 24 Mineral Claims.

LOCATION:

The property is situated in the Pelly River District, Yukon Territory, and is located at 62° 13' N. Latitude and 133° 13' W. Longitude. It lies between Blind Creek and Vangorda Creek, northern confluences to the Pelly, in the Pelly River valley.

The claims may be reached by aircraft from Whitehorse to Jackknife Lake, a distance of 140 flying miles, or by road under construction from Ross River to Blind Creek, some thirty-five miles.

PROPERTY: The HOY Groups consist of twenty-four mineral claims as follows:

Group "A" Nos. 1 to 8 inclusive - Tag Nos. 67391 to 67398
Group "B" Nos. 9 to 16 " - Tag Nos. 67399 to 67406
Group "C" Nos. 17 to 24 " - Tag Nos. 67407 to 67414

The claims were recorded on December 4th, 1953 by Alator Corporation Limited, Toronto, Ontario, and since transferred to George Scott (in trust), Suite #803 - 66 King Street, West, Toronto, Ontario.

The claims were fairly well staked and are bounded on the north by the A.J. group and on the east by the RENO and TED groups.

TOPOGRAPHY: The greater part of the area covered by the claims lies between Elevation 2500 feet and Elevation 2700 feet, and is covered by undulating regional glacial and recent drift.

The northern boundary of the group takes in the Pelly River escarpment, rising rapidly to Elevation 3500 feet.

A thickly wooded stand of small to medium spruce, with patches of grey and white alder, covers the lower and greater part of the claims. The remainder is windfall, rock talus and barren along the escarpment proper.

GEOLOGY: There appear to be at least two distinct series of rocks underlying the area covered by this group, G.S.C. Memoir No. 200, Map 394-A.

Yukon schists underlie HOY Nos. 6, 7, 8, 9, 10 and 12 mineral claims. The trend is apparently flat to the northwest and dipping from 30° to 60° to the southwest.

The second series of rocks consist chiefly of greenstone, argillite and cherts. These rocks generally do not conform to the schists and apparently overlie them.

The actual contact between these series was not observed, although presumed to lie within boundaries of Nos. 21 and 24 HOY Mineral Claims.

Considerable rock breccia and a magnetic anomaly were noted in this area and several hundred feet to the south a small outcrop of conglomerate was located, on HOY No. 24 Mineral Claim.

ROCK

DESCRIPTIONS: The schists vary in texture and composition from the fine greenish chloritic and sericite types to those of a coarse grey, banded micaceous kind.

The greenstone is provisionally classed as argillite, although in part seems andesitic. No attempt was made to differentiate between these rocks.

Cherts, varying in colour -- the red and green predominating -- are dense, extremely fine grained, flinty rocks.

The conglomerate noted had pebbles up to 1/2" and was cemented by silica sand and micaceous material.

The andesite, presumed to be in a dyke, is a greenish, medium textured rock, chiefly feldspar pyroxene hornblende.

The breccia occurring on the HOY No. 23 Mineral Claim is composed chiefly of chert, both red and green. The matrix is fine grained and was undetermined in the field.

The quartzite noted on the northern boundary of HOY No. 7 Mineral Claim is brownish white, usually showing minute grains of sparsely disseminated iron pyrite.

MAGNETIC

ANOMALY:

While surveying these claims, a noticeable magnetic deviation was observed some 300 feet east of the No. 1 Posts of HOY Nos. 23 and 24 Mineral Claims. This occurrence was checked by dip needle and found to be a distinct anomaly.

A magnetometer survey was made to verify the above findings and differences of up to 3,000 gammas in intensity was noted.

Although most of the readings were taken on bedrock, the area immediately to the southwest of the zone was heavily overburdened, supporting small spruce and alder.

The anomaly was outlined on the sketch plan appended hereto.

MINERALIZATION: No amount of mineralization was noted. The quartzite carried only sufficient to cause discoloration and therefore hardly worthy of note.

CONCLUSION: The greater part of the claims is covered by overburden, probably underlain by Yukon schists, and is not deemed by the writer of much economic importance.

On the east end of the group the curious magnetic anomaly is definitely interesting -- is easily accessible from the Ross River-Blind Creek road -- and may warrant further work.

Should this be considered, further geophysical methods are implied.

Respectfully submitted,



H. M. POWELL,
Mining Engineer.

HME/hc.

Dec. 7/54.

APPENDIX

"HOY" GROUP - PELLY RIVER DISTRICT, Y.T.

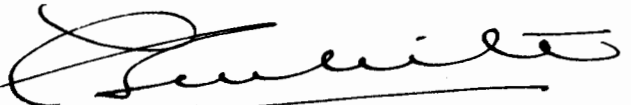
CONCLUSION & RECOMMENDATIONS:

Since the major part of the area bounded by the claims was covered with overburden and dense brush, surface prospecting was difficult and impractical. All rock exposures were carefully examined, but any correlation or interpretation of structural features was not attempted, due to the scattered pattern of the outcrops.

The limited amount of prospecting completed, using the dip needle and magnetometer, proved highly successful in outlining an area worthy of further investigation. A detailed geophysical survey is recommended for the entire area covered by the HOY Nos. 21 to 24 Mineral Claims. Extra staking to the south and east should precede any such contemplated program.

Geochemical methods, utilizing the simple method of soil testing, is recommended in conjunction with the geophysical work.

Respectfully submitted,



L. G. White, P. Eng.

LGW/hc.
Dec.7/54.

EXPENSE SUMMARY

TO:

Costs of supplying and maintaining a crew of six men in the Pelly River area, 140 air miles northeast of Whitehorse, Y.T. Purpose of the job was to thoroughly prospect and map the HOY Group of 24 Mineral Claims:

Crew: 6 men.
Time: 38 days.
No. of Claims: 24

LABOUR COSTS: Per Payroll Summaries:

1 Mining Engineer - Party Chief, @ \$18.00/day	\$ 684.00
2 Prospectors, @ \$12.00/day	912.00
2 Student-Surveyors, @ \$10.00/day	760.00
1 Horse Wrangler, @ \$10.00/day	<u>380.00</u>

Total Labour Costs: \$ 2,736.00

Workmen's Compensation(Insurance) @ 5% - 136.80

BOARD COSTS: Per Northern Commercial Invoices:

Food Supplies - averaged \$3.00/day/man:
Total supplies costs (38 x 18) 684.00

TRANSPORTATION: Whitehorse Flying Services:

6 Plane Charters: 2 @ \$60.00/hour - 4 hrs.	\$ 240.00
4 @ \$80.00/hour - 8 hrs.	<u>640.00</u>

880.00

HORSE RENTALS: T. Connelly, Ross River, Y.T.

Packing Supplies - 2 horses @ \$6.00 -
Total Cost (\$6.00x38) 228.00

INSTRUMENT RENTAL:

Magnetometer - 1/2 month @ \$150.00/month: 75.00

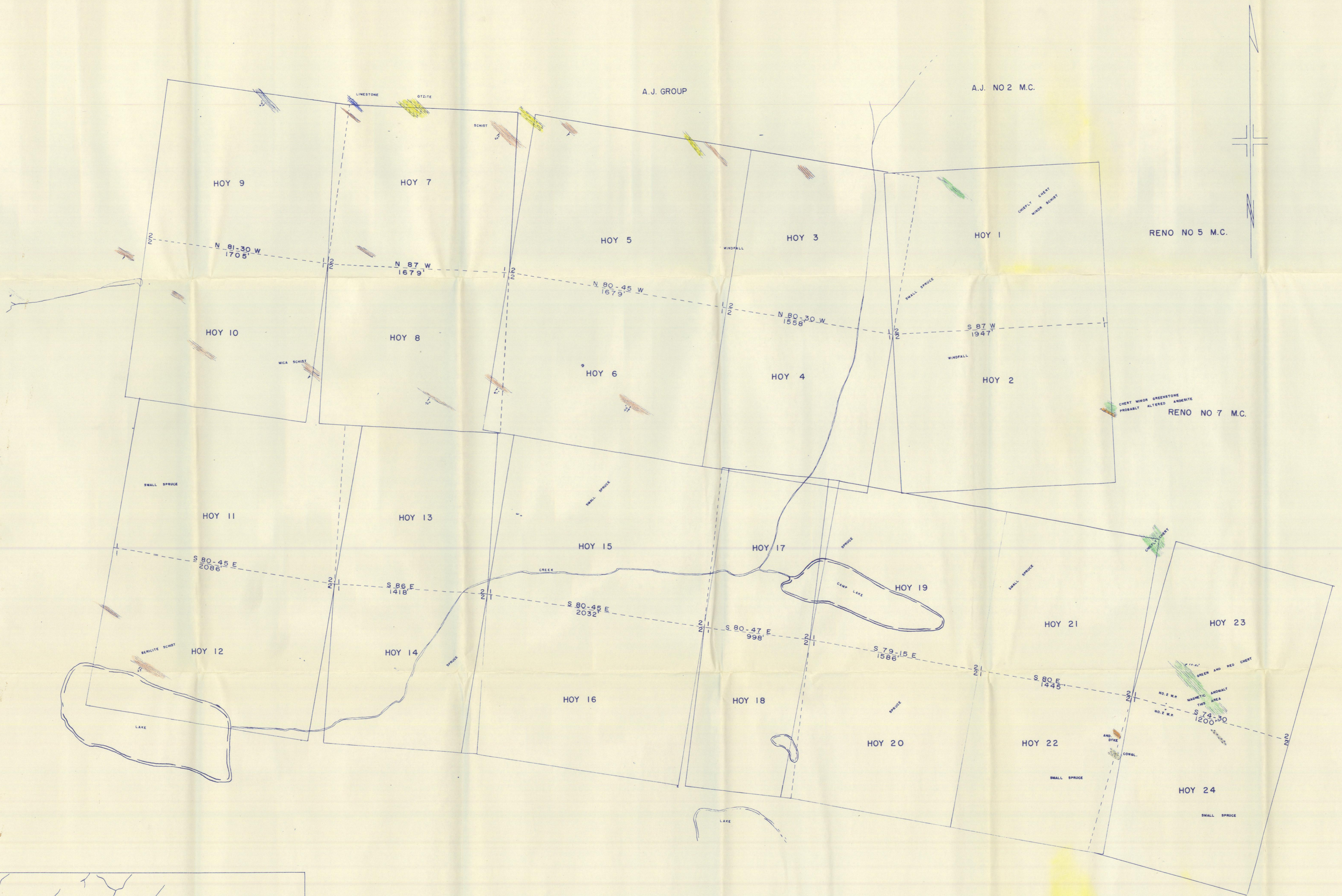
PREPARATION & PRINTING REPORT: Engineering Service - 75.00

TOTAL EXPENSE:- \$ 4,814.80

TOTAL COST/CLAIM:- \$ 200.62

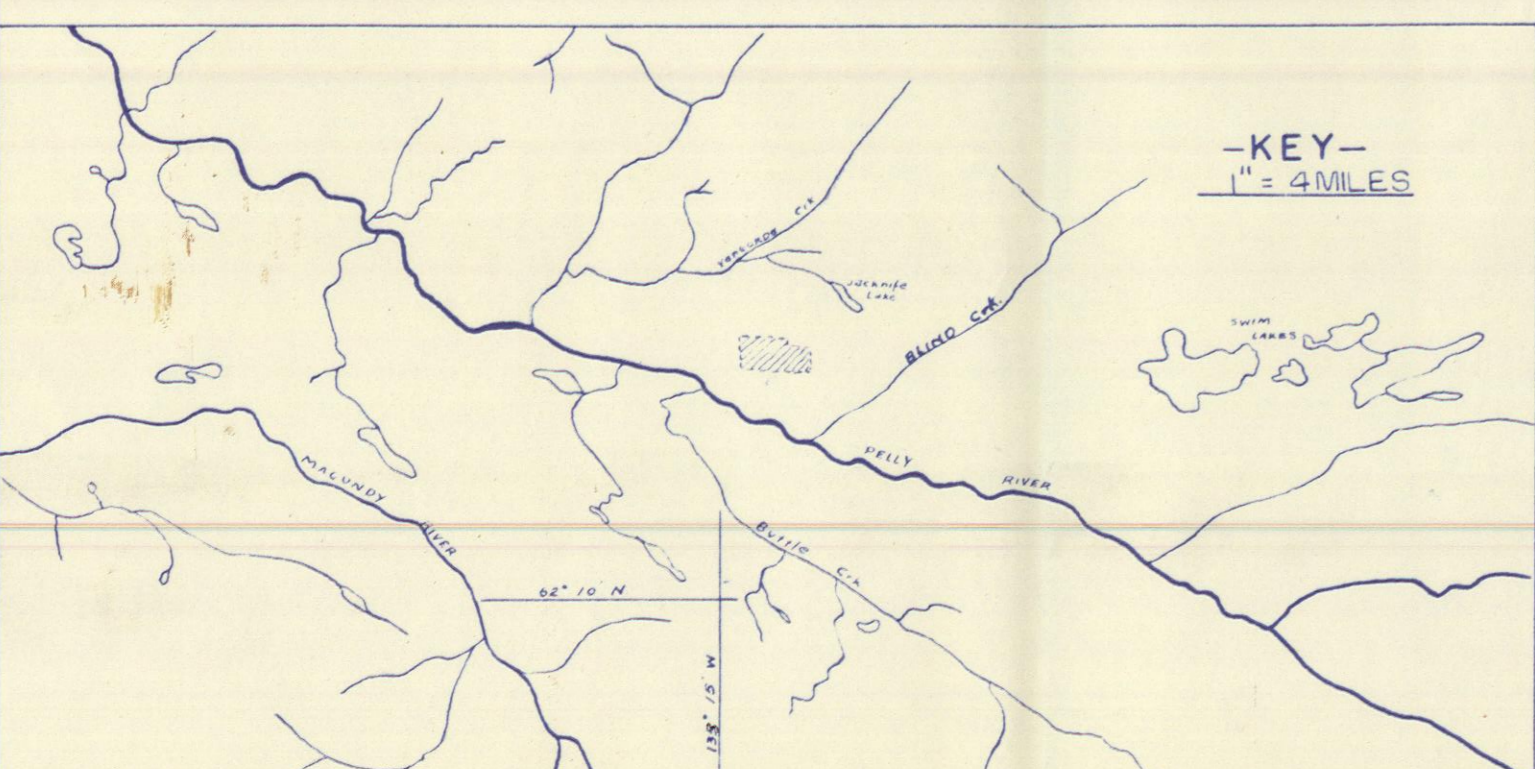
CORRECT:


L. G. White.



LEGEND

	LIMESTONE
	SCHIST
	QUARTZITE
	ALTILOQUE
	CONGLOMERATE
	BRÉCCIA
	CHEAL GREENSTONE
	DIOHTE OR ANDERITE DIKE



GEOLOGICAL PLAN
HOY GROUP
PELLY RIVER DISTRICT
 —Y.T.—
 Scale 1" = 400' By *HPowell*
 NOV 1954

CONFIDENTIAL

HOY 21

HOY 23

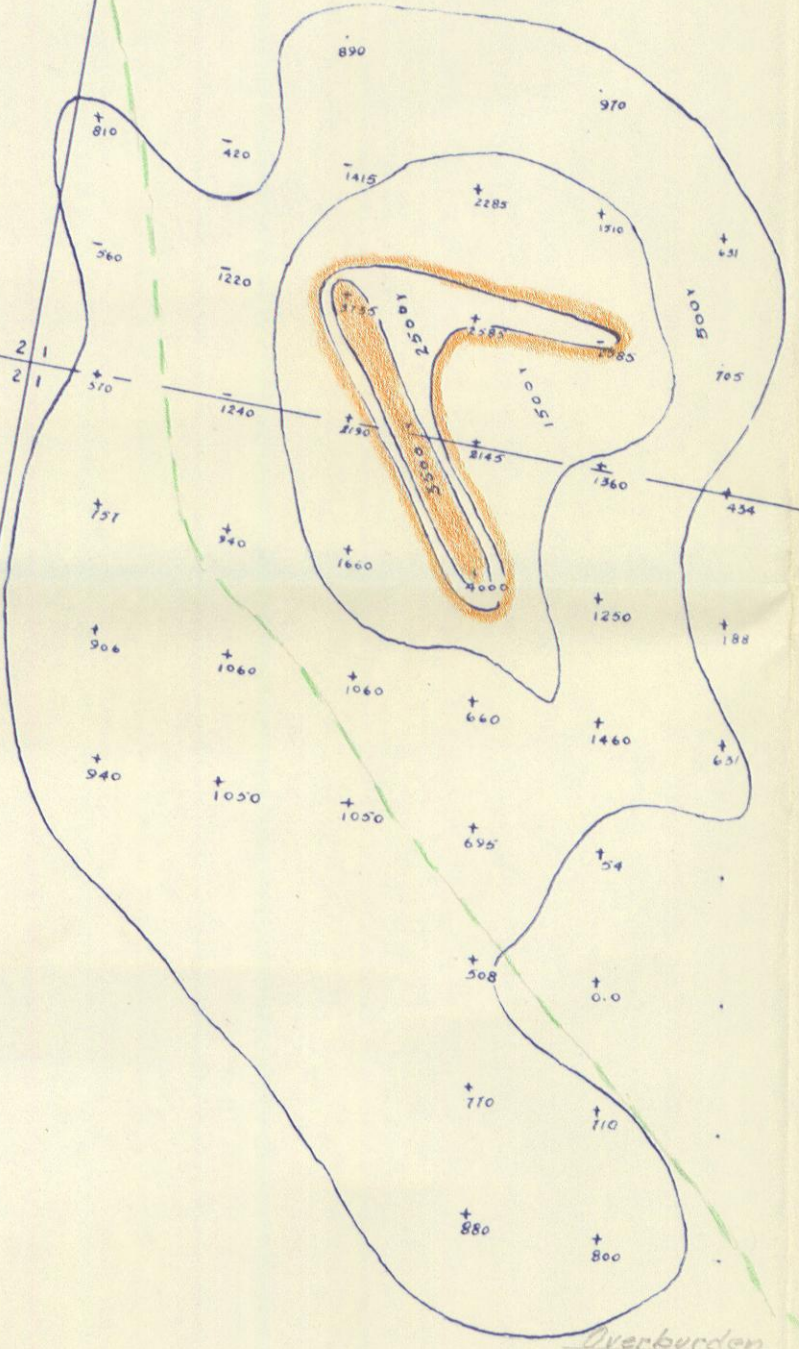
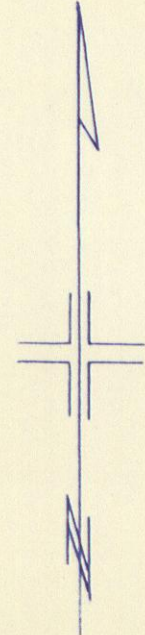
HOY 22

HOY 24

GREEN CHERT

BRECCIA ZONE

CONFIDENTIAL



SKETCH PLAN

MAGNETIC ANOMALY

HOY 23, 24 M.C.'S

MAGNETOMETER CHECK ON DIP NEEDLE SURVEY ANOMALY

CONTOUR INTERVAL 1000 GAMMAS

APPROX. SCALE 1" = 200'

BY. HPowell

NOV. 1954.