

REPORT

of completed geological and geophysical works on the

No name Cr. tributary Dominion Cr Grant № P 516989

August 20, 2016 to August 22, 2016

Dawson District

Report compiled by:

Geologist Boris Logutov

Technician Pavel Garyashin

Introduction

Geophysical survey was conducted by using of Ground Penetrating Radar (GPR) on the No name Cr. tributary Dominion Cr Grant № P 516989 August 20, 2016 to August 22, 2016.

RESULTS AND METHODOLOGY OF THE CONDUCTED STUDIES.

Two lines of GPR survey's were was surveyed during the field works. The total length of the lines is **550** m; the distances between lines approx. is **80** m. The actual location of the surveyed lines is presented on the map at the picture #1. (see attachment). The original data of electro-magnetic survey are presented on CD (see attachment 2).

The coordinates of the surveyed lines are presented at the Table 1.

Table1.

Lines ##	Points of survey	Coordinates of the "start" and "end" points		Elevation of the points (m) .
1	Start	63 ⁰ 47 ¹ 53 ¹¹	138 ⁰ 35 ¹ 12 ¹¹	674
	End	63 ⁰ 47 ¹ 47 ¹¹	138 ⁰ 35 ¹ 04 ¹¹	675
2	Start	63 ⁰ 47 ¹ 56 ¹¹	138 ⁰ 34 ¹ 58 ¹¹	696
	End	63 ⁰ 47 ¹ 50 ¹¹	138 ⁰ 34 ¹ 53 ¹¹	702

The electro-magnetic survey was conducted by using the GPR "EasyRad PRO+" equipped with antenna by working frequency 100 MHz with resolution 0.2m; the results of the survey which was analyzed by using software «Prizm 2.5». The actual depth of the effective survey is estimated up to 11 m.

TESTING.

Three testing pit was completed in the limits of the line 1. The pit are performed up to bedrock and were presented from the top up to the bottom by turf deposits with thickness 0.9-1.8 m, and alluvium with thickness 1.3-1.7m. The bedrock is present by quartz-sandstone at the depth 1.9-3.1m.

The alluvial deposits was tested by the prospector's pan. Approx 10 litres was washed. The results of testing showed the grades of the Au of 0.9- 1.5 g/cub.m. (20 colors per pan).

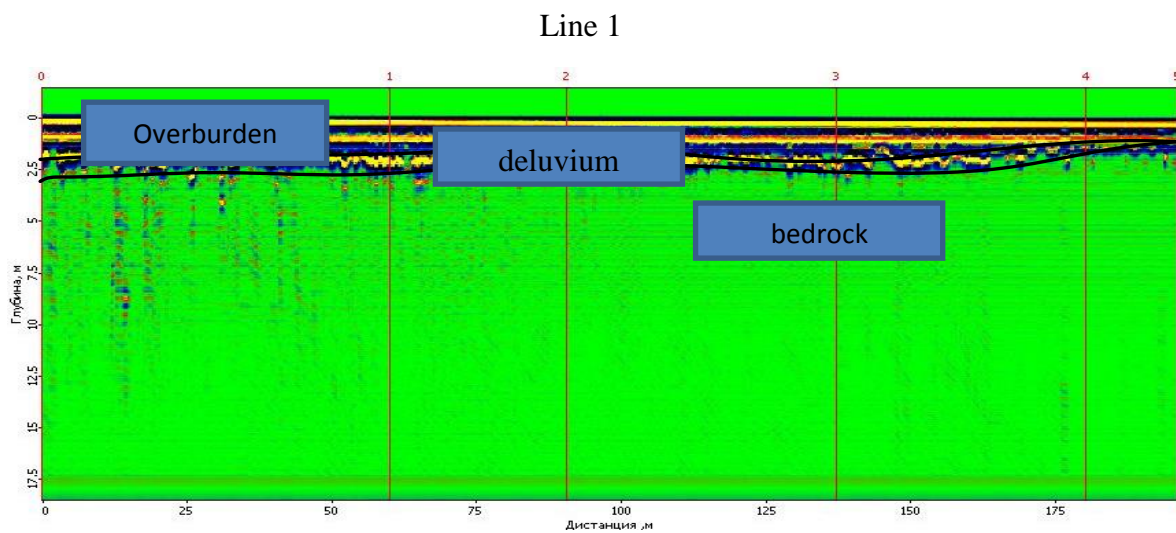
The results of the conducted surveys are present the strong ability of recognition of the main lithological units at the radar's-images such as: "turfs"- thickness 0.9-1.8m; "alluvium"- thickness 1.3-4.0m; "weathered bedrock" – thickness 0.6-1.1m; "bedrock surface" – at the depth up to 6.4m.

The results of the final interpretation and analysis of the received data of GPR surveys are presented at the pictures 2.



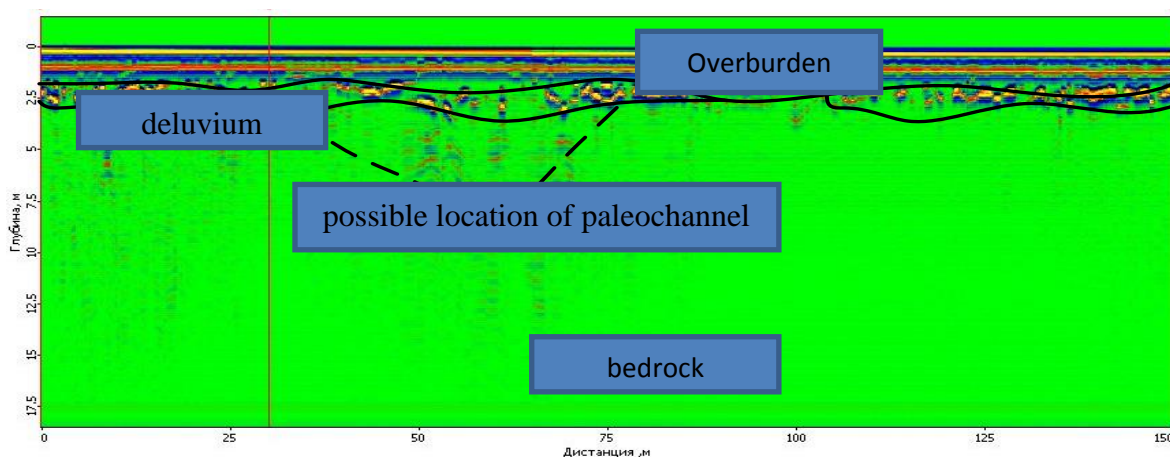
Pic. 1

The lines map of survey location.



Pic. 2

Line 2



Pic.3

CONCLUSION

The geological-geophysical studies were conducted in the limits of No name Cr. tributary Dominion Cr Grant № P 516989 August 19, 2016 to August 23, 2016. The results of the conducted studies are:

- Actual data of GPR survey;
- Analysis and interpretation of the GPR data;
- The lithological distribution of the Quaternary deposits along the cross-section were analyzed;
- The depth and thickness of the lithological units were corrected with according to information received from testing pits;
- The brief summary of the results was compiled.

Boris Logutov _____ 26 August, 2016

Pavel Garyashin _____ 26 August, 2016