

REPORT

of completed geological and geophysical works on the

Grouping claims Fox 1-13 California Cr. Grant № P516225 - P516237,

Grouping GD01075

June 25, 2015 to July 2, 2015

Dawson District

Report compiled by:

Geologist Boris Logutov

Technician **Valeriy Nezbudeev**

Introduction

Geophysical survey was conducted by using of Ground Penetrating Radar (GPR) at the Group of Claims Fox 1-13 California Cr. Grant № P516225 - P516237, Grouping GD01075 during period of June 25, 2015 to July 2, 2015.

RESULTS AND METHODOLOGY OF THE CONDUCTED STUDIES.

Four lines of GPR surveys were surveyed during the field works. Total length of the lines is 1200 m; the distances between lines approximately 300 to 500m. The actual location of the surveyed lines is presented on the map at the picture #1. (see attachment). The original data of electro-magnetic survey are presented on CD (see attachment 2).

The coordinates of the surveyed lines are presented at the Table 1.

Table1.

Lines ##	Points of survey	Coordinates of the “start” and “end” points		Elevation of the points (m) .
1	Start	64 ⁰ 04 ¹ 54.63 ¹¹	140 ⁰ 21 ¹ 18.86 ¹¹	638

	End	64 ⁰ 04 ¹ 55.12 ¹¹	140 ⁰ 21 ¹ 43.28 ¹¹	633
2	Start	64 ⁰ 04 ¹ 48.95 ¹¹	140 ⁰ 21 ¹ 45.68 ¹¹	637
	End	64 ⁰ 04 ¹ 49.07 ¹¹	140 ⁰ 21 ¹ 20.69 ¹¹	635
3	Start	64 ⁰ 04 ¹ 35.04 ¹¹	140 ⁰ 21 ¹ 46.11 ¹¹	636
	End	64 ⁰ 04 ¹ 35.55 ¹¹	140 ⁰ 21 ¹ 22.10 ¹¹	640
4	Start	64 ⁰ 04 ¹ 19.51 ¹¹	140 ⁰ 21 ¹ 48.37 ¹¹	624
	End	64 ⁰ 04 ¹ 19.64 ¹¹	140 ⁰ 21 ¹ 26.48 ¹¹	643

Electro-magnetic survey was conducted by using the GPR “Python” equipped with antenna by working frequencies 100 MHz with resolution 0.2m; the results of the surveys were analyzed by using software «Intel PROSet Wireless» and «Prizm 2.5».The actual depth of the effective survey is estimated up to 5-8m.

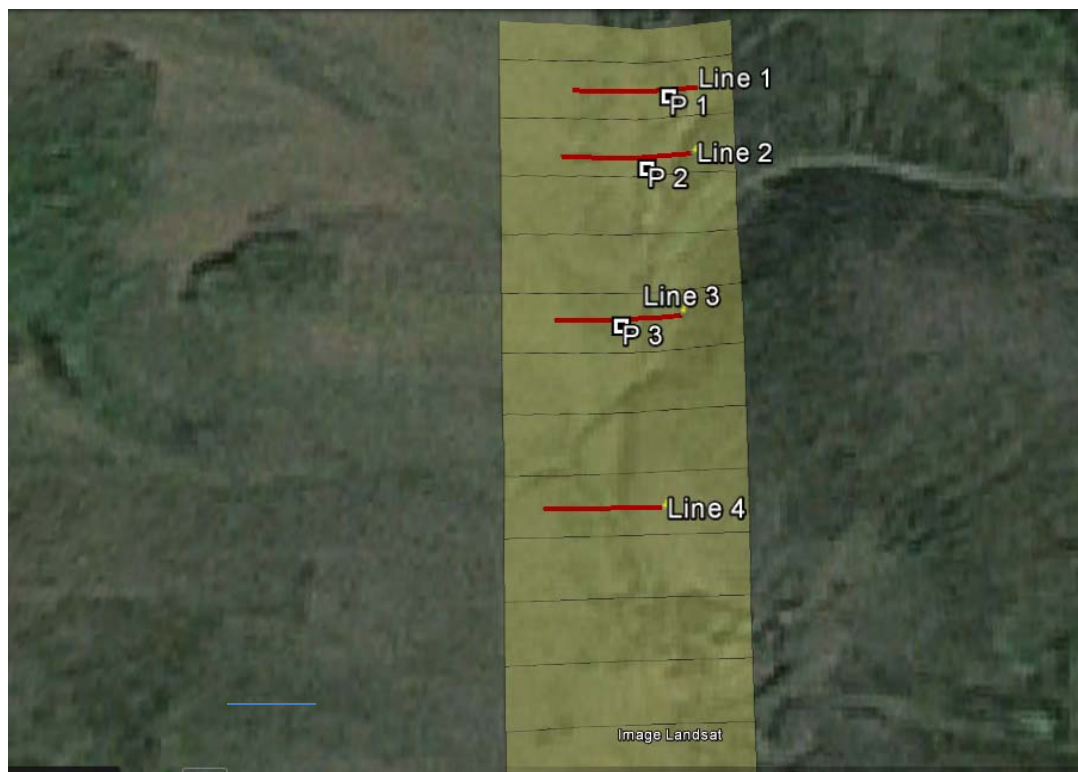
TESTING.

Three testing pits were completed in the limits of the lines 1, 2, 3. The pits are performed up to bedrock and were presented from the top to the bottom by turf deposits with thickness 1.0 to 1.4m, and alluvium with thickness 1.5-1.8m. The bedrock is represented by quartz-sandstone at the depth 2.5-3.2m.

The alluvial deposits were tested by using the prospector’s pan. Approximately 100 litres were washed. The results of testing show the grades of the Au of 0.5-1.2 g/cub.m.

The results of the conducted surveys represent the strong ability of recognition of the main lithological units at the radaro-grams such as: “turfes”- thickness 1.0-1.8m; “alluvium”- thickness 1.5-7.0m; “weathered bedrock” – thickness 0.5-1.1m; “bedrock surface” – at the depth up to 8m.

The results of the final interpretation and analysis of the received data of GPR surveys are presented at the pictures 2,3,4,5,6.



Pic. 1

The map shows the location of the lines of survey.

CONCLUSION

The geological-geophysical studies were conducted in the limits of «Grouping claims Fox 1-13 California Cr. Grant № P516225 - P516237, Grouping GD01075» during the period of June 25, 2015 to July 2, 2015.

The results of the conducted studies are:

- Actual data of GPR survey were collected;
- Analysis and interpretation of the data were performed;
- The lithological distribution of the Quaternary deposits along the cross-section were analyzed;
- The depth and thickness of the lithological units were corrected according to information received from testing pits;
- The brief summary of the results is compiled.

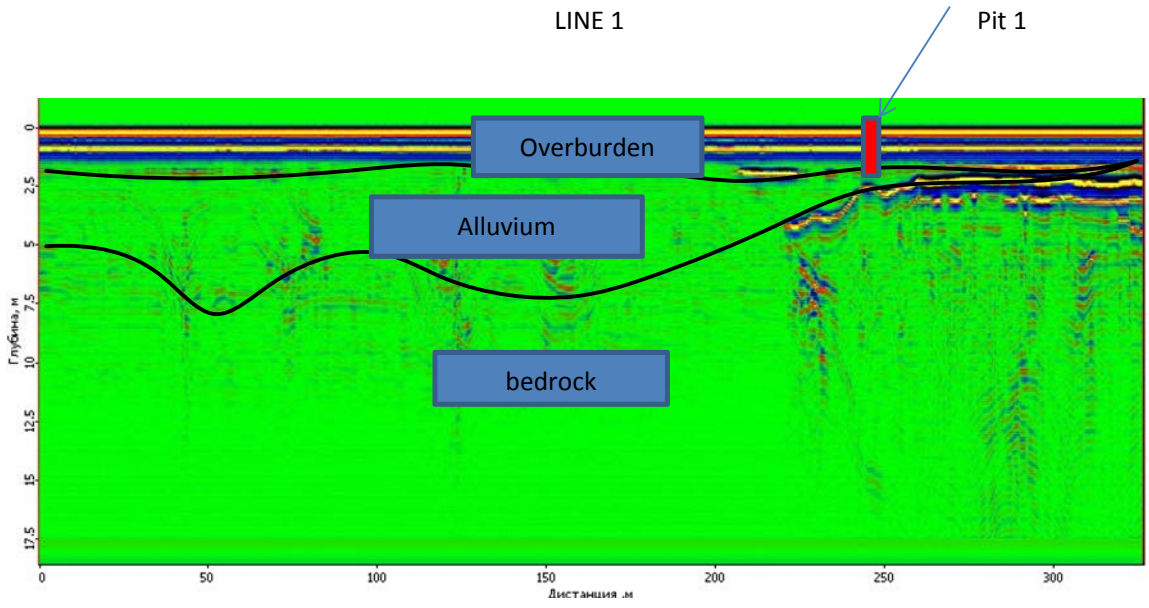


Рис. 2

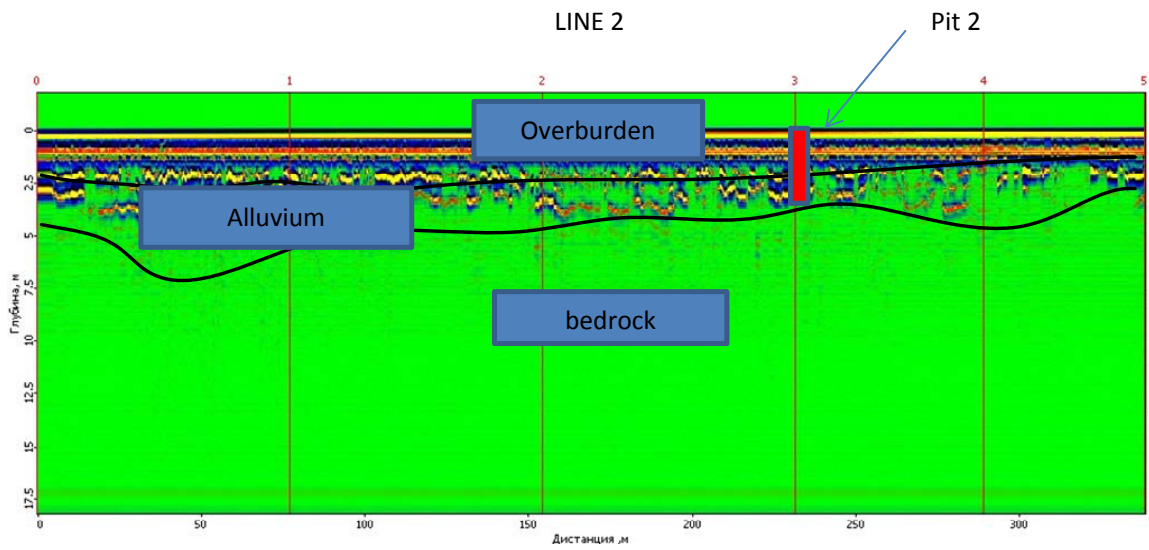


Рис. 3

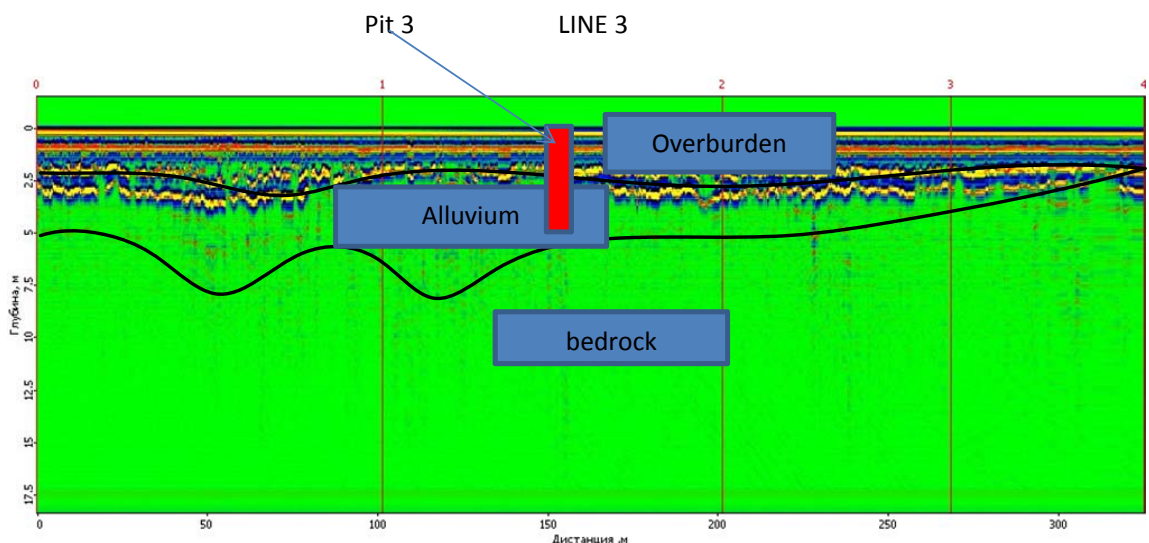


Рис. 4

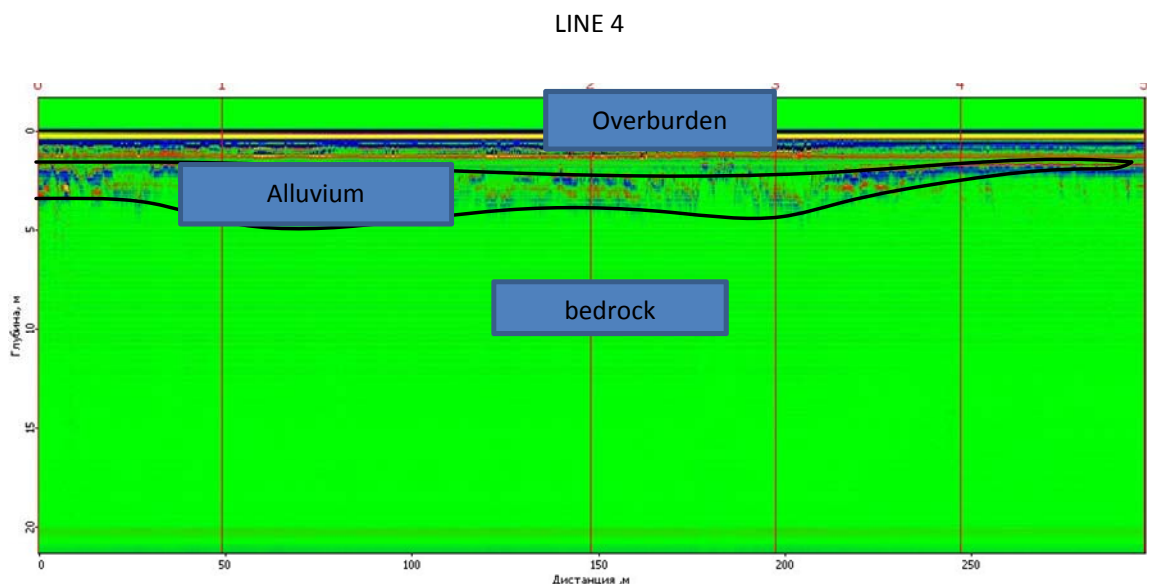
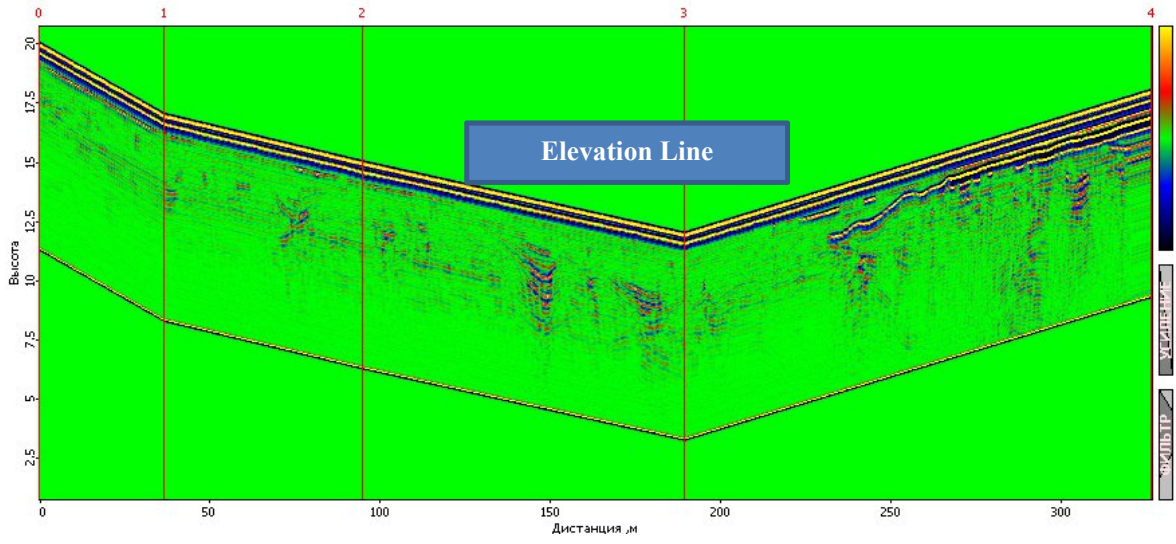
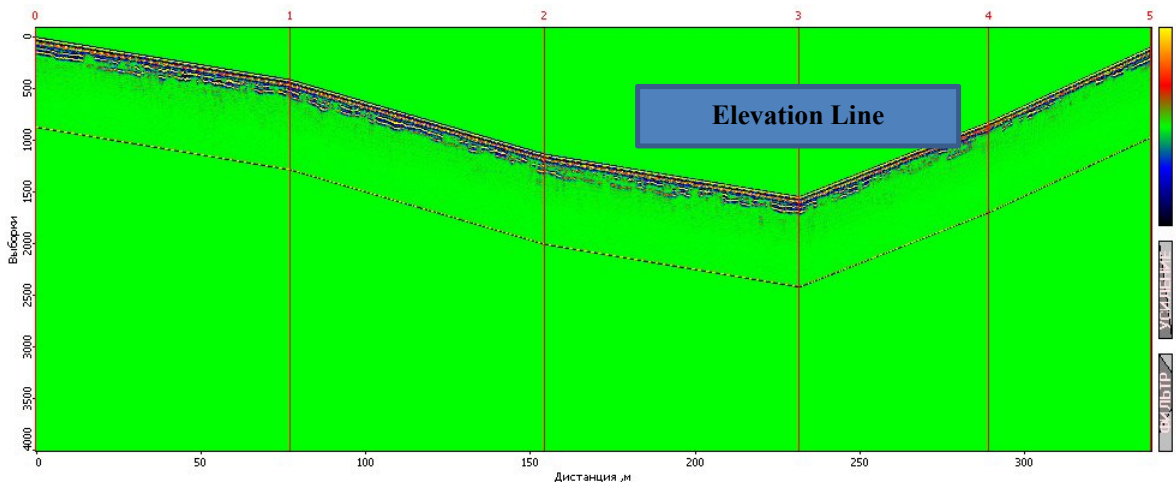


Рис. 5

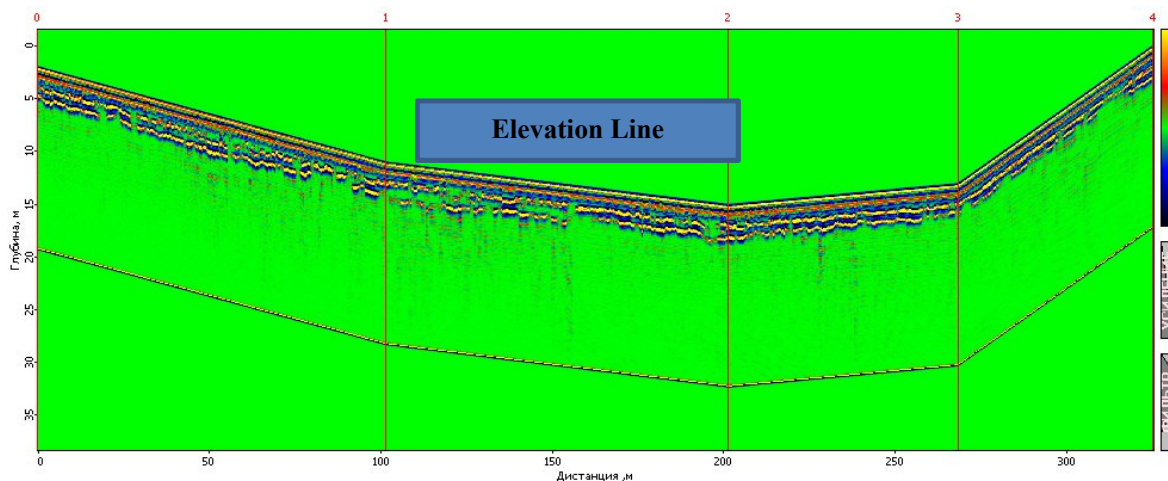
LINE 1



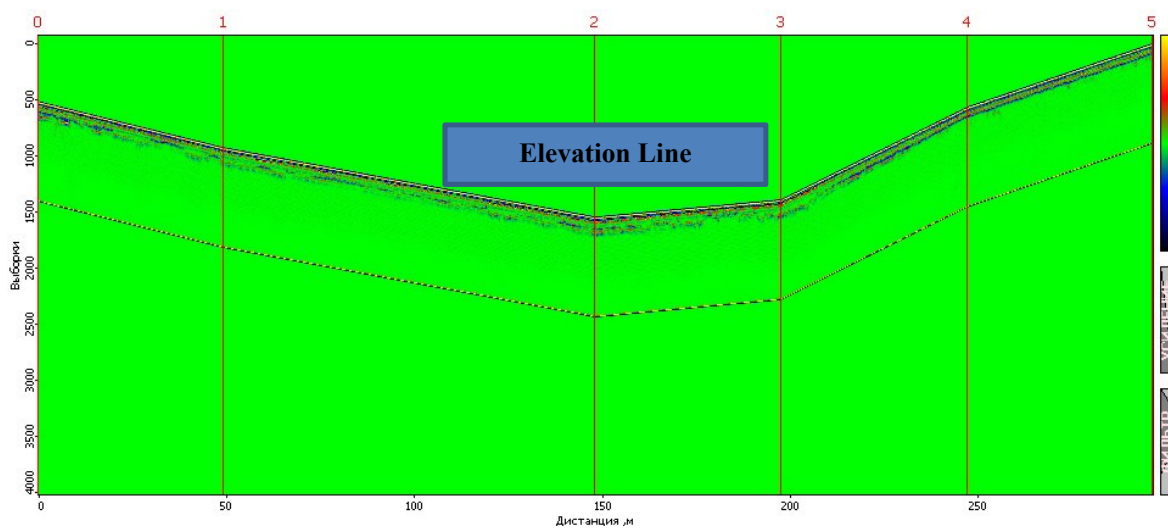
LINE 2



LINE 3



LINE 4



Pic. 6

Radaro-grams compiled according to landscape elevations.

Boris Logutov _____ 22 July, 2015

Summary of Boris Logutov

Perm State University, Department of Geophysics, 1984-1989 year,

Specialty - engineer geologist-geophysicist;

Perm Polytechnic Institute, Department of Economics and Management, 1991-1993 g,

Specialty - economist-manager;

Work as an engineer geologist-geophysicist - from 1988 to the present.

Explored deposits of (experience of work):

Chrome ore (Perm, Russia);

Placer gold (Perm Territory, Russia, Yukon, Canada);

Gold ore (Perm, Orenburg region, Russia);

Placers diamonds (Perm, Russia);

Ore diamonds (Arkhangelsk Region, Russia, Northwest Territories, Canada);

Copper ore (Orenburg region, Russia).

Boris Logutov

22.07.2015