

120034



LYNX CREEK 1ST TIER BENCH

LOCATION AND ACCESS

The Lynx Creek bench formation is located on the right bank approximately six (6.0) kilometres upstream from the confluence of Haggart Creek and Lynx Creek (see Figure 5).

Access to the property during the winter months is by a rough winter road. This road branches off the Dublin Gulch road and parallels the right side of Lynx Creek up to Ray Gulch.

PROPERTY

The Lynx Creek 1st Tier Bench placer lease 5326, is a two mile bench placer lease located within the Mayo Mining District and is owned by Canada Tungsten Mining Corporation Limited. The placer lease is in good standing until the expiry date of July 2, 1982.

PURPOSE OF INVESTIGATION

To determine the placer gold, scheelite potential of the bench formation on the right bank of Lynx Creek and to cover assessment work requirements.

DRILL PROGRAM AND RESULTS

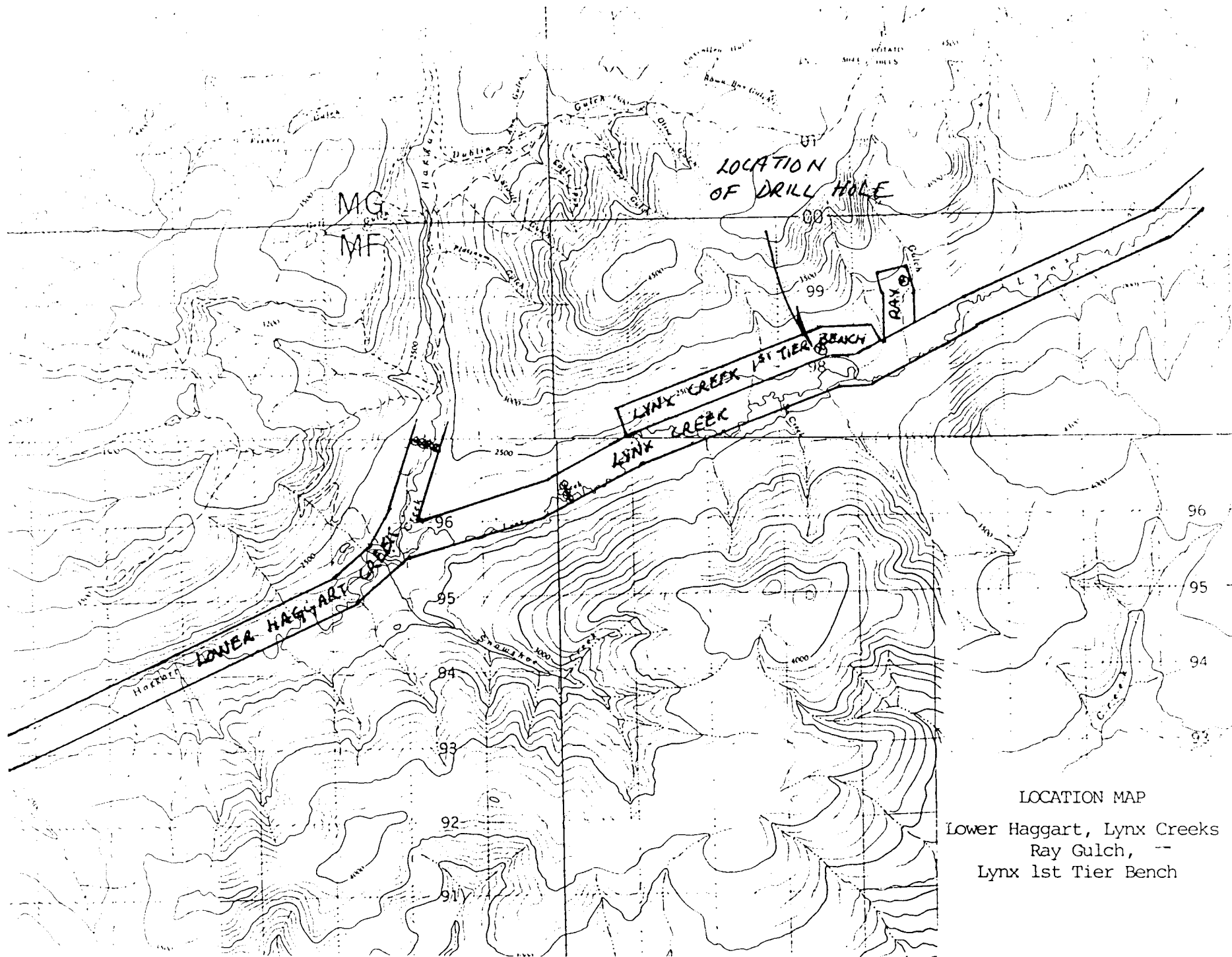
One hole was drilled approximately two hundred (200) metres north of the base line of placer claim LYN 40. The drill hole was terminated at one hundred (100) feet in a pebble-cobble gravel because the assessment work requirement had been completed. Trace quantities of scheelite and pyrite were encountered throughout the hole, while only several sections contained trace quantities of gold. A summary of the drill hole is outlined below:

HOLE #	LOCATION	DEPTH TO BEDROCK	DEPTH OF HOLE	COMMENTS
82RD-19	1st Tier Bench Lynx Creek	did not complete hole	100'	- trace quantities of scheelite and pyrite throughout the hole

#### CONCLUSIONS AND RECOMMENDATIONS

The work assessment for Lynx Creek 1st Tier Bench has been accomplished. Insignificant quantities of gold, scheelite and pyrite were encountered and no further placer evaluation is warranted.

It is recommended that Canada Tungsten drop the Lynx Creek bench claim (placer lease #5326).



LOCATION MAP  
Lower Haggart, Lynx Creeks  
Ray Gulch, --  
Lynx 1st Tier Bench

STATEMENT OF DIRECT COSTS

LYNX CREEK 1st TIER BENCH PL. 5326

<u>DATE</u>	<u>PERSONNEL/EQUIPMENT</u>		
April 23, 24, 25, 1982	R. J. Barclay (Supervisor)	N/A (Management)	
April 23, 1982	D. Kelly (Geologist)	\$225.00/day X 1/2 day =	\$ 112.50
	Placer Drilling Schramm T64H-B	60' @ 24.50/foot =	1,470.00
April 24, 1982	M. Philpot (Project Geologist)	\$300.00/day X 1/2 day =	150.00
	Placer Drilling Schramm T64H-B	40' @ 24.50/foot =	980.00
April 25, 1982	Ken Hansen (Sampling Supervisor)	\$250.00/day X 1/2 day =	125.00
	Herve Chaudet (Sampler)	\$164.00/day X 1/2 day =	82.50
	Paul Romard (Sampler)	\$185.00/day X 1/2 day =	92.50
TOTAL COST			<u>\$3,012.50</u>