

MAP NO.: PLACER ASSESSMENT REPORT X
115 I 06 PROSPECTUS X
CONFIDENTIAL X
OPEN FILE

DOCUMENT NO: 120018
MINING DISTRICT: Whitehorse
TYPE OF WORK: Magnetometer Survey

REPORT FILED UNDER: L. Lebedoff

DATE PERFORMED: August 3, 1983

DATE FILED: Sept. 8, 1983

LOCATION: LAT.: 62° 17'N

AREA: Liberty Creek

LONG.: 137° 06'W

VALUE \$: 500.00

CLAIM NAME & NO.: P22997

WORK DONE BY: G.C. Lee

WORK DONE FOR: L. Lebedoff

DATE TO GOOD STANDING:

REMARKS: #28 LIBERTY CREEK

LIBERTY CREEK

MAGNETOMETER SURVEY

Whitehorse Mining District, Yukon Territory

Placer Claim No. P22997

Map N.T.S. 115-I-6

by

Gary C. Lee P. Eng.

Field work conducted on August 3, 1983

TABLE OF CONTENTS

	PAGE
INTRODUCTION	
- General	1
- Claim	1
- Location and Access	1
ECONOMIC GEOLOGY	1
FIELD PROCEDURE	2
INTERPRETATION AND CONCLUSIONS	2
RECOMMENDATIONS	3
LOCATION PLAN	4
LIBERTY CREEK MAG. PROFILES	5 - 6

INTRODUCTION

General

On August 3, 1983 Larry Lebedoff and Brad White, both of Whitehorse, conducted a magnetometer survey on Liberty Creek. The purpose of the survey was to locate magnetic anomalies which might be related to above background concentrations of magnetically susceptible minerals synonymous with placer gold deposition possibly in old buried channels.

Claim

Placer claim No. P22997 dated August 18, 1984 was granted to Larry Lebedoff.

Location and Access

The location of the area surveyed is shown on the enclosed Location Map (Pg.4). It is located Northwest of Carmacks, Yukon approximately 45 road miles to the headwaters on Liberty Creek near the peak of Freegold Mountain. From here a foot trail approximately 1½ miles connects the claim to road's end.

ECONOMIC GEOLOGY

The most significant comments are made in G.S.C. Memoir 214, "Geology and Mineral Deposits of Freegold Mountain, Carmacks District, Yukon by Johnston (1963)". It is stated that magnetite deposits associated with gold occurrences are at the northwest end and on the east side of Freegold Mountain. It is also stated that "A number of Quartz veins containing sulphides and gold have been discovered on claims situated around the heads of Liberty, Cabin, and Guder Creeks." In any event, the geology - ie. gold associated with magnetically susceptible heavy minerals - could result in the magnetometer being a useful exploration tool.

FIELD PROCEDURE

A baseline coincident with the claim line on the north side of the creek was established. The lines were run in at 50 meter spacing with the stations being marked at 5 meter spacing. Both lines and baseline were marked with felt pens on flagging and written on blazed spruce trees at reasonable intervals so as to give some permanency to the grid. The Location Plan (Pg.4) shows the general location of the grid.

A Sharpe's M.F.-1 Fluxgate magnetometer was used and readings were taken to the nearest 10 gammas, occasionally at 5 gammas. The instrument reads the vertical component of the earth's magnetic field.

Readings were taken at $2\frac{1}{2}$ meter intervals. Visual estimates were made of topographical changes and surface features along the lines with some of these noted on the accompanying profile sheets (Pages 5/6).

Magnetometer readings were taken along the baseline in short loops and corrected for diurnal. Similarly, each set of two lines was surveyed in a loop checking into the baseline readings for each loop and subsequently corrected.

INTERPRETATION AND CONCLUSIONS

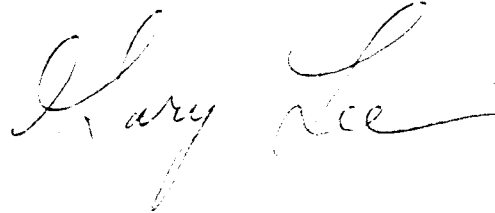
With reference to the magnetometer survey, refer to the magnetic profiles included as pages 5 and 6. A few well defined anomalies of 50 gammas or more were detected. The only way of telling if any of the anomalies are caused by an economic placer deposition, is by test pitting. Some of the anomalies are centred over the active creek channel while others are on the side hill or benches. Four magnetometer highs have been chosen for test pitting which cover at least one of the active creek, low level bench and side hill targets. The following recommendations list exact test pit locations and it is left up to future field investigations as which should have priority.

RECOMMENDATIONS

Test pits or trenches should be excavated to bedrock and the gravels checked for placer gold at the following locations.

<u>Line</u>	<u>Station</u>	<u>Particulars</u>
L0+50W	0+15S to 0+25S	Steep side hill
L1+00W	0+7.5S	Active creek channel
L2+50W	0+10S to 0+12.5S	Flat low level bench
L4+00W	0+22.5S	Low level bench

Respectfully submitted:



Gary C. Lee, P.Eng.

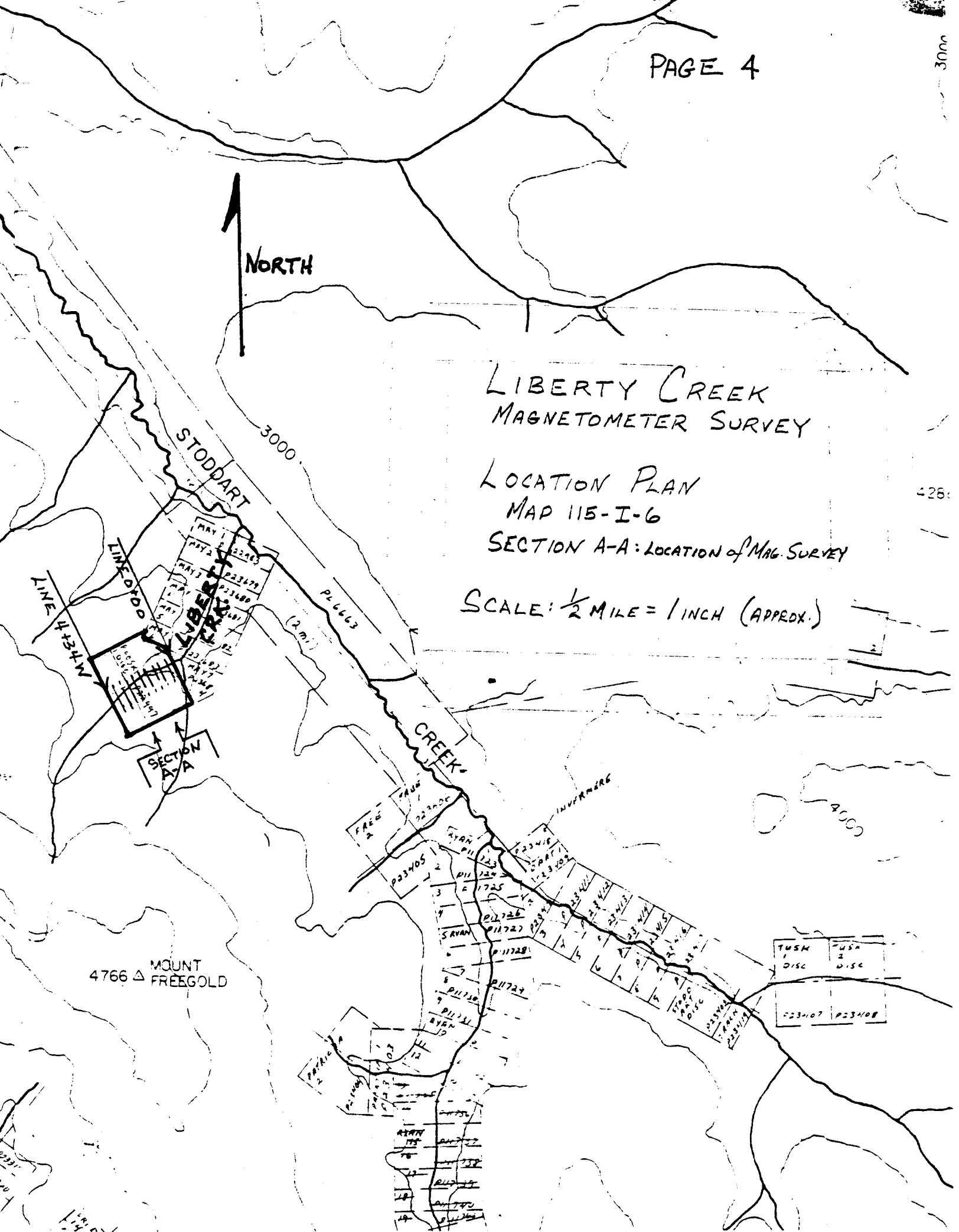
NORTH

LIBERTY CREEK MAGNETOMETER SURVEY

LOCATION PLAN MAP 115-I-6

SECTION A-A: LOCATION OF MAG. SURVEY

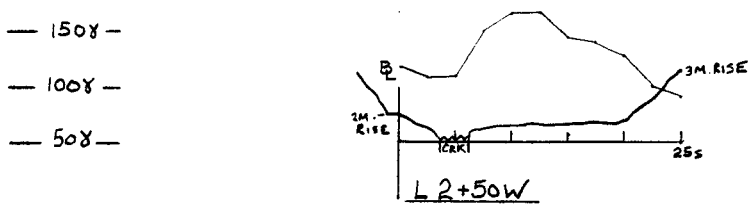
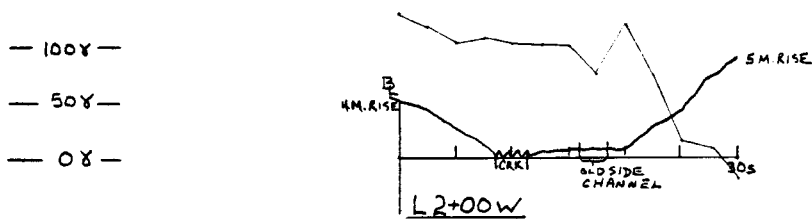
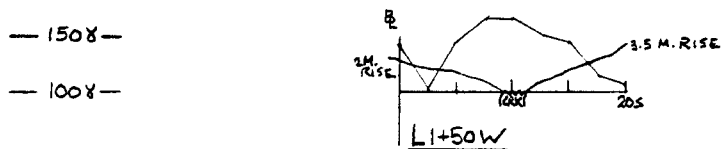
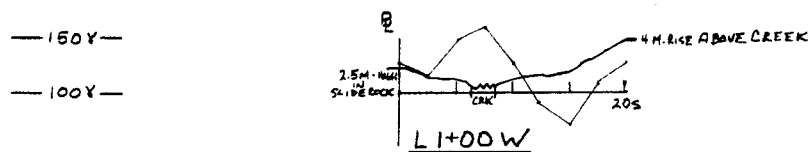
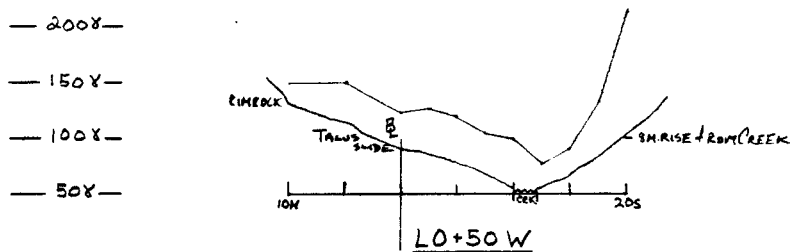
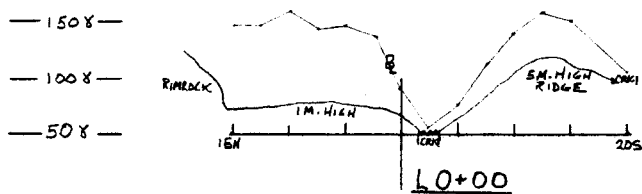
SCALE: 1/2 MILE = 1 INCH (APPROX.)



TUSH 1 DISC	TUSH 2 DISC
P23407	P23408

MOUNT 4766 Δ FREEGOLD

MAY 1 P23403
 MAY 2 P23479
 MAY 3 P23480
 MAY 4 P23481
 MAY 5 P23482
 MAY 6 P23483
 MAY 7 P23484
 MAY 8 P23485
 MAY 9 P23486
 MAY 10 P23487
 MAY 11 P23488
 MAY 12 P23489
 MAY 13 P23490
 MAY 14 P23491
 MAY 15 P23492
 MAY 16 P23493
 MAY 17 P23494
 MAY 18 P23495
 MAY 19 P23496



↑
DOWN STREAM

MAGNETIC PROFILES
ROOSKI #1 DISCOVERY
(LIBERTY CREEK P22997)
AUGUST 1983 NTS 115-I-6
SHARPE MF-1 FLURGATE
SCALE: VERTICAL 1CM. = 50y
HORIZONTAL 1CM. = 5M.
LL

