

2019 Geological, geophysical and remote sensing work on the Monster Property

Work performed by:

**Go Metals Corp., Allin Exploration Solutions, Southern Geoscience and
Groundtruth Exploration on behalf of Go Metals Corp.**

on the

**Monster 1 to Monster 304 claim, Dawson mining district, NTS map sheet
116B/13**

Centre of property is approximately

64°49'48.59"N, 139°44'59.59"W

Work performed during

February through September 2019

Authored by

**Jacob Verbaas, BSc, MSc, PhD, PGeo
VP Exploration – Go Metals Corp.**

1. Summary

The Monster Property is a 64.5 km² IOCG-Co property in the Ogilvie Mountains of Yukon Canada. The property has been intermittently explored since the 70's, resulting in numerous surface copper and cobalt showings. Go Metals Corp. initiated its exploration on the claim in 2018.

Go Metals Corp. furthered exploration on the Monster Property in 2019 by performing a gravity survey, a drone photogrammetry survey, an IP/resistivity survey, and a geological alteration mapping survey. The gravity survey was focused on areas highlighted as prospective after exploration in 2018. The survey yielded 900 new data points. Gravity was terrane corrected using a 15 cm digital elevation model acquired with drone photogrammetry. The IP/resistivity survey targeted 2 magnetic anomalies of interest and both are (partly) coincident with IP anomalies. The alteration mapping identified zones of intense chlorite, hematite, specularite and carbonate alteration which are locally associated with mineralization. Approximately ninety rock samples were taken during the mapping which yielded grades of over 22% Cu and 1% Co.

The gravity survey has been processed to high detail and indicates anomalous areas underneath all three areas that were targeted. All IP lines indicate weak to high chargeability anomalies in the subsurface. Two IP anomalies, magnetic anomalies and gravity anomalies are coincident and represent priority targets for a future drilling program.

Contents

1. Summary	2
2. Introduction	5
2.1. Purpose	5
3. Property description and location	7
4. Accessibility, climate, local resources, infrastructure and physiography	7
4.1. Accessibility and infrastructure.....	7
4.1. Climate	7
4.1. Local resources.....	8
4.1. Physiography.....	8
5. History.....	8
5.1. 1975 – 1976.....	8
5.2. 1993 – 1998.....	8
5.3. 2001 – 2007.....	9
5.4. Geophysical work.....	10
5.4.1. Induced polarization survey.....	10
5.4.2. Radiometric survey	10
5.4.3. Magnetic survey.....	10
5.4.4. Gravity survey	11
5.5. Go Metals, 2018.....	11
5.5.1. Remote Spectral Geological Survey	11
5.5.2. Soil Sampling Survey	12
5.5.3. Geophysical survey	13
5.5.4. Prospecting and mapping	14
5.5.5. Rock property measurements	14
6. Geological setting and mineralization	14
6.1. Regional geology.....	14
6.1.1. The Wernecke Supergroup	15
6.1.2. The Wernecke Breccia	15
6.1.3. Post-brecciation	16
6.1.4. Clasts within Wernecke Breccia	17
6.1.5. Correlation to IOCG deposits on Australia.....	17
6.2. Property Geology	17

6.2.1.	Wernecke Supergroup	17
6.2.2.	Wernecke Breccia	17
6.2.3.	Alteration	18
6.2.4.	Structure	19
6.2.5.	Mineralization	20
7.	Deposit type	27
8.	Exploration	27
9.	Discussion.....	28
10.	Conclusions	29
11.	References	29

Map 1. Alteration map and rock samples

Map 2. Drone DEM

Digital Appendix (in .zip archive):

- 2019 Gravity survey, Bouger gravity map and data)
- 2019 Resistivity survey, sections, maps, 3d files, and data
- 2019 Rock assay certificates, geophysical rock property data
- Historical gravity survey inversion

2. Introduction

2.1. Purpose

This report was prepared by Go Metals Corp. to be filed as an assessment report to the Yukon Mining Recorder. This report concerns geophysical, geochemical and geological work undertaken from February 2019 through September 2019 is reported.

The purpose of this work was to identify drill-targets for a future drill program.

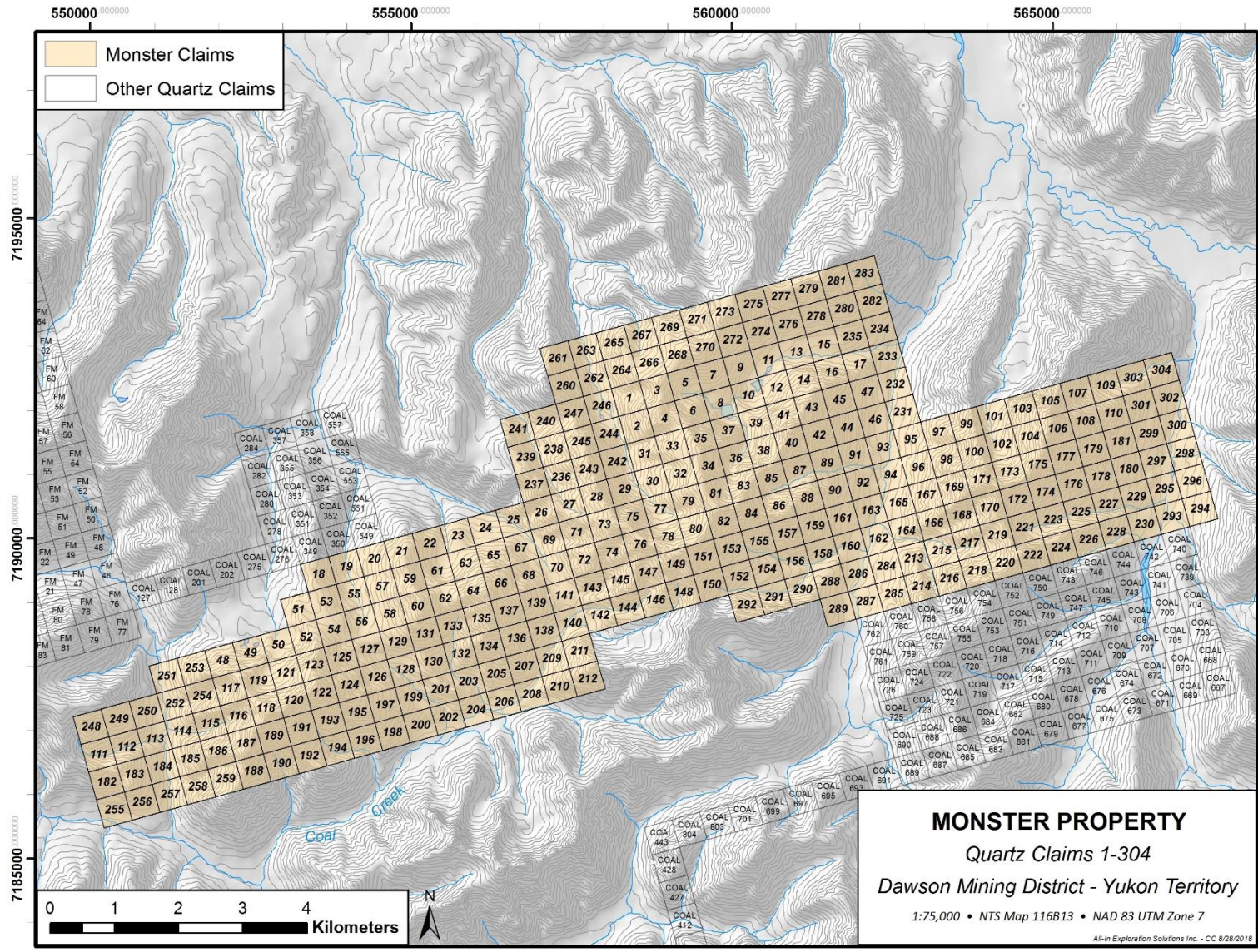


Figure 1. The 304 quartz claims of the Monster Property shaded in brown.

3. Property description and location

The Monster Property is located in central-Yukon, approximately 85 km northeast of Dawson City. The claim block encompasses part of the northern Wernecke Breccia belt, a roughly linear EW trending belt of hematitic Iron Oxide Copper & Gold (IOCG) mineralized breccia zones. The Wernecke Breccia is exposed in a Proterozoic window in the Ogilvie Mountain. The Property consists of 304 contiguous 1500 x 1500 foot claim blocks and has a total surface area of 63.5 km² (Figure 1). The center of the Property is located approximately at 64°49'48.59"N, 139°44'59.59"W. The Property consists of the Monster 1 – 304 quartz claims. Go Metals Corp. holds 100% interest in the Property. Claim data including grant numbers are reported in Appendix 6.

The Property encompasses several previous claim blocks that have been intermittently explored since the 70s. Historical work on the claim blocks has resulted in the description of numerous zones of Cu and Co mineralization using soil sampling, surface mapping, and geophysical surveys (Baknes, 1995; Falls and Baknes, 1995; Williams, 1997; Jones, 1999).

The Property is located within Tr'ondëk Hwëch'in First Nation Traditional territory. The Tr'ondëk Hwëch'in First Nation encourages early engagement between them and mining companies. This engagement is crucial for the success of mining and exploration projects.

Under the Quartz Mining Act of the Yukon Regulations the Company is required to notify the Chief of the Tr'ondëk Hwëch'in of its activities on the Property. Class I Notification was given in April 2019 and permission to work was granted shortly thereafter.

4. Accessibility, climate, local resources, infrastructure and physiography

4.1. Accessibility and infrastructure

The Monster property is located approximately 85 km north of Dawson City in the Ogilvie Mountains, Yukon Territory, Canada. The nearest road is the Dempster Highway, 75 km west of the Monster property. The nearest fixed wing airstrip is a 600 m long gravel airstrip on the South Tatonduk River about 10 km north of the property (64°55.7' N 139°52.3' W). The nearest helicopter base is in Dawson City. Dawson City is a mining town with hotels, motels, equipment and other services and is reachable by paved highway or aircraft from Whitehorse, Yukon.

4.1. Climate

The climate in the Yukon is typical of northern mountainous terrain. Snow commonly covers the property from late October to May, and the last patches of snow normally melt in late June. The best time for exploration activity is from June to early September. Snow may precipitate at any time of year, but it is unusual for a snowstorm to last more than week in summer. The mean annual precipitation on the Property is 300 – 400 mm. Summer temperatures in the valleys can reach over 20 °C during the daytime. The Yukon is close to the polar circle and the property receives more than 18 hours per day of direct sunlight during the peak of summer. During the winter the temperature can drop below -40 °C.

4.1. Local resources

Most of the workforce can be sourced from Dawson City, Whitehorse, and other towns in Yukon Territory. Dawson City hosts the most proximal helicopter, drilling, soil sampling and other mining services. Whitehorse hosts a larger and more varied workforce and is separated from Dawson City by 532 km of paved highway.

4.1. Physiography

The Ogilvie Mountains were unaffected by continental glaciation during the Pleistocene. Hence, relief on the monster property is over 1 km and elevation ranges from 900 m to over 2000 m. The terrain is steep and rugged, and the mountains are characterized by steep cirques and sharp ridges. Most of the property is above the treeline and covered by grasses, mosses and shrubs. Exposure is excellent on steep mountain ridges and minor on less inclined ridge crests. Valleys and lower parts of steep slopes are commonly scree covered.

5. History

5.1. 1975 – 1976

Work during 1975 and 1976 focused on cobalt and copper on the DAS and Cobalt Cirque mineral claims. These historical claims overlap with the current Monster mineral claim. Union Miniere Exploration and mining Corporation Limited (UMEX) owned and explored the DAS and Cobalt Cirque mineral claims through geological mapping and soil sampling. Over 2 field seasons UMEX analyzed 1059 soil samples for Cu and Co, and a subset of these samples were also analyzed for Zn, and another subset for Ag.

A total of 170 soil samples of claims partly covering the Cobalt Cirque mineral claim were analyzed for Cu, Zn, Co and Ag during a soil sampling survey in 1975. Statistical analyses yielded anomalies of Cu > 190 ppm, possibly anomalous Zn of up to 270 ppm, uniformly low Ag and no anomalous Co (Dyson, 1976a).

A total of 645 soil samples of the DAS mineral claim were analyzed for Cu and Co during a soil sampling survey in 1976. Statistical analyses yielded anomalies of Cu > 480 ppm and possibly anomalous Cu of 290 – 450 ppm, and anomalies of Co > 110 ppm (Dyson, 1976b).

A total of 244 soil samples of the Cobalt Cirque mineral claim were analyzed for Cu and Co during a soil sampling survey in 1976. Statistical analyses incorporated the results of the aforementioned 1975 soil survey results and defined four Cu anomalies of > 200 ppm and spot anomalies of >100 ppm Co (Dyson, 1977).

5.2. 1993 – 1998

Renewed interest in the Wernecke Breccia followed the recognition of IOCG deposits as a separate deposit class and the discovery of the giant Olympic Dam deposit in Australia (Hitzman et al., 1992). The Monster mineral claim was explored by Monster Joint Ventures in 1993. The Cobalt Cirque mineral claim was staked separately and named the 'Cookie' mineral claim by Pendisle Resources in 1995. Pendisle Resources changed their name to Blackstone Resources and continued exploration on the Monster and

Cookie Claims in 1996 and 1998. During this period, all of the exploration work was performed by Equity Engineering Ltd. partly in collaboration with Pamicon Developments Ltd. and Etheridge H. Williams.

A total of 872 soil samples and 377 rock samples were collected and analyzed from 1993 to 1998. Additionally geological, magnetic and gamma ray spectrometry maps were produced that helped define anomalous areas of Cu and Co.

Exploration in 1993 on the Monster and Monster west mineral claims, then 2 separate claims, confirmed the soil anomalies previously defined by UMEX, and confirmed the potential for Olympic Dam style mineralization on the Monster property. Several soil samples yielded Cu of > 1000 ppm, combined with anomalous Co, Zn, and Pb mineralization. Au, Ag and U in soil was uniformly low. Float samples yielded up to 1.70 % Cu.

Exploration in 1994 on the Monster claim, which then incorporated both the claims of 1993 and was significantly extended by further staking, focused on both rock and soil samples. Rock samples were both grab and float samples and demonstrated widespread alteration on the Monster claim. Grab samples yielded up to 25.9% Cu and 2.80% Co.

A total of 283 soil samples were collected in 1994 and analyzed for Au, Ag, Co, Cu, Pb, Zn and Ba. Statistical analyses of these soil samples was performed using 593 additional samples of other Wernecke Breccia zones within the Ogilvie Mountains (but not on the Monster mineral claim). In combination with older data, this soil sampling program outlined numerous anomalies of >300 up to >900 ppm Cu locally in combination with >50 up to >100 ppm Co.

A total of 11 stream sediment samples were collected in 1994. However, these samples were too few to allow a statistical treatment and were instead compared to regional background data. Elevated Cu and Co concentrations in stream sediment samples coincided with known mineralization in the catchment of the respective samples.

5.3.2001 – 2007

In 2001 Monster Copper Resources Inc. acquired 100% interest in the Monster/Cookie property. Monster Copper Resources Inc. invested in a gravity survey over part of the Monster/Cookie property and identified a large anomaly of 3 mgal. Additional gravity surveying was done in 2002. The interpreted anomaly declined slightly in intensity but was still considered prospective. The anomaly was drilled concurrently with further gravity surveying in 2003. An improved set of elevation data was obtained in 2003 which allowed for the reinterpretation of all the gravity data. The previously identified strong gravity anomaly appeared to be mostly an artifact of the low-quality elevation data that was used for the terrane correction prior to 2003. As a result the drill hole that was meant to intersect the supposed gravity anomaly failed to intersect anything of interest.

In 2007 Monster Copper Resources Inc. analyzed 1071 pulps of soil and rock samples collected by Blackstone Resources from 1993 – 1998 for U. The highest U in grab samples was 32 ppm. The highest U in soil samples was 20 ppm.

5.4. Geophysical work

5.4.1. Induced polarization survey

UMEX obtained data from three IP lines on the DAS claim in the seventies. Unfortunately, the data itself is unreported. The anomalies were noted to be locally related to mineralization. However, some anomalies were not related to mineralization (Baknes, 1995).

5.4.2. Radiometric survey

In 1994 a ground radiometric survey was performed over 8 km of grid line in Monster West. Baknes (1995), noted that high K counts locally coincided with areas of known mineralization or elevated Cu in soil. However, some anomalies did not relate to mineralization (Baknes, 1995).

Normalizing K counts to Th counts is commonly used as a correction for the effect of primary lithology. However, on the Monster West claim some false anomalies were noted due to very low Th in local host rock (Baknes, 1995).

In 1996 High-Sense Geophysics Ltd. performed a helicopter borne magnetic (Section 5.4.3) and radiometric survey. EHW subsequently analyzed and interpreted the data (Williams, 1997). The regional survey was flown on a line spacing of 1000 m with a detailed survey flown over a smaller area (The Monster Property) with a spacing of 250 m. The survey was flown without control lines. In addition to that, the effects of instrumental noise and rapid changes in flight path resulted in minor degradation of the data quality (Williams, 1997). Regionally the radiometric data can outline the major lithological units on the basis of the K and U counts. Within the Wernecke Breccia the radiometric data indicate variable potassic alteration. Locally these data coincide with known areas of mineralization. The 1000 m line spacing used in the regional survey was too high to adequately assess potassic alteration within the Wernecke Breccia. However, the detailed survey on the Monster Property was successful in outlining potential areas of high potassic alteration (Williams, 1997).

5.4.3. Magnetic survey

A comprehensive magnetic survey was carried out in 1996 by High-Sense Geophysics. The magnetic data was collected concurrently with radiometric data (Section 5.4.2). The study consisted of a regional aeromagnetic survey and a detailed aeromagnetic survey. Regional aeromagnetic data was obtained using 1000 m line spacing. The results from this survey are useful for defining broad target areas and the regional structural setting (further described in section 6.2.4). The detailed aeromagnetic data was obtained using 250 m line spacing and allowed for the outlining of the general structure of the Monster Property and magnetic anomalies that are related to geology. However, 250 m line spacing is still too large to identify specific drill targets.

Differences in the ratio of magnetite/hematite are commonly the cause of magnetic highs in IOCG deposits. Magnetite is an order of magnitude more magnetic than hematite. The magnetic highs are locally correlated to zones of increased mineralization, notably on the east side of the Monster Property (Williams, 1997), and remain areas of interest.

The former Cookie Claim (currently the eastern part of the Monster Property) contains a distinct magnetic high that is modeled at 200 m below the surface. This magnetic high may have a southern dip

and continue westward. Mineral showings on the Cookie Claim are bounded by E-W faults to the north and south and NE-SW structures to the east and west (Williams, 1997).

5.4.4. Gravity survey

Gravity surveys were performed from 2001 – 2003 by Monster Copper Resources. A gravity anomaly defined in 2001 and 2002 was followed up by additional gravity surveying and drilling in 2003.

Unfortunately, after applying an improved terrane correction the gravity anomaly was discovered to be an artifact of elevation. The drill hole failed to intersect anything of interest (Setterfield, 2001, 2003; Setterfield and Tykajlo, 2002).

5.5. Go Cobalt, 2018

5.5.1. Remote Spectral Geological Survey

A remote spectral geological (RSG) survey was undertaken in April and May of 2018 to define targets for follow up ground work. The survey included a DEM lineament analyses. The full report is available in Verbaas, 2018.

The RSG survey indicated that general priority areas on the claim were located in the center and east of the Property. The NS trending valleys in these areas were soil sampled in order to test subsurface mineralization. Soil samples in the center valley returned elevated values of copper, cobalt and locally gold. Soil samples in the eastern valley do not indicate substantial subsurface mineralization.

Several new mineralized showings were identified. Most of the new showings, such as the Gremlin and Golem showing occur in pervasively chlorite altered host rock with potassic feldspar veining. Blebs, disseminations and veinlets of chalcopyrite and bornite occur locally within these rocks. One showing, the Griffin Showing is contained in laminated carbonate that is partially replaced by hematite and jasper.

Selected results are indicated in the table below.

Table 1. Select grab samples of new showings.

Zone	New showings		
	Cu (ppm)	Co (ppm)	Au (ppb)
Gorgon	0.82%	<0.01%	<5
Gnome & Golem	0.18%	<0.01%	<5
Griffin	0.13%	0.01%	<5
Gremlin	0.76%	<0.01%	<5

The spectral survey appears to have locally indicated copper showings. Only one new showing yielded 0.01% cobalt. The eastern part of the claim (the former Cookie claim) may be mainly prospective for copper.

5.5.2. Soil Sampling Survey

A total of 829 soil samples were collected for assays in two areas. The soil samples were collected using augers. Approximately 150 – 500 grams of soil was collected per sample. The location of the soil samples was recorded by a handheld GPS. Meta data such as depth, ground cover, and sample colour were recorded in the field.

Samples were analyzed by MS analytical in Langley, BC. All samples were analyzed for using ICP-AES and ICP-MS on a 20-gram 150-micron mesh screened sample. Any samples that were above the detection limit for gold were analyzed by fire assay.

Percentile Cu and Co values are reported in table 16.

Table 2. Percentiles of cobalt and copper in soil

Percentile	Cu (ppm)	Co (ppm)
50%	44.4	13.8
80%	101.2	21.8
95%	219.2	38.1
98%	318.6	52.4

Soil sampling indicates significant concentrations of cobalt and copper within the central valley (figure 4-5). Elevated cobalt and copper concentrations may be dextrally offset by a large fault that runs through the valley. One soil sample with 149.5 ppm cobalt, 484.2 ppm Cu, 1.35 ppm Ag and 35 ppb Au likely indicates mineralized bedrock very close to the surface.

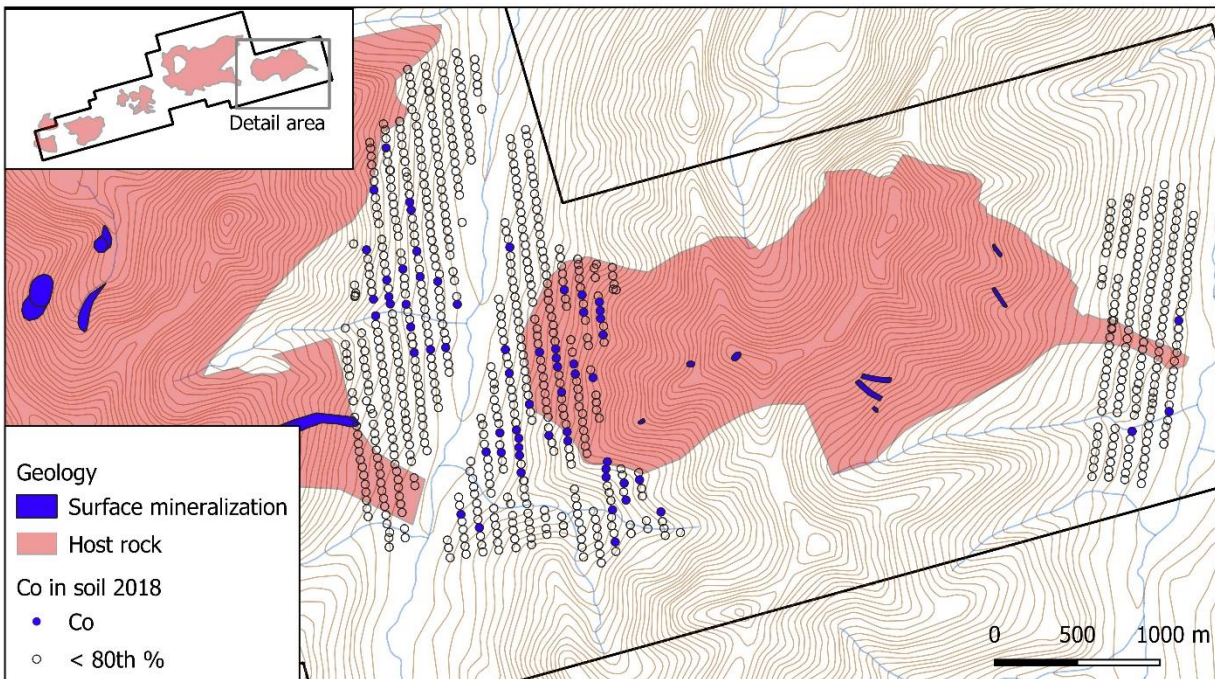


Figure 2. Soil samples with Co > 80th percentile

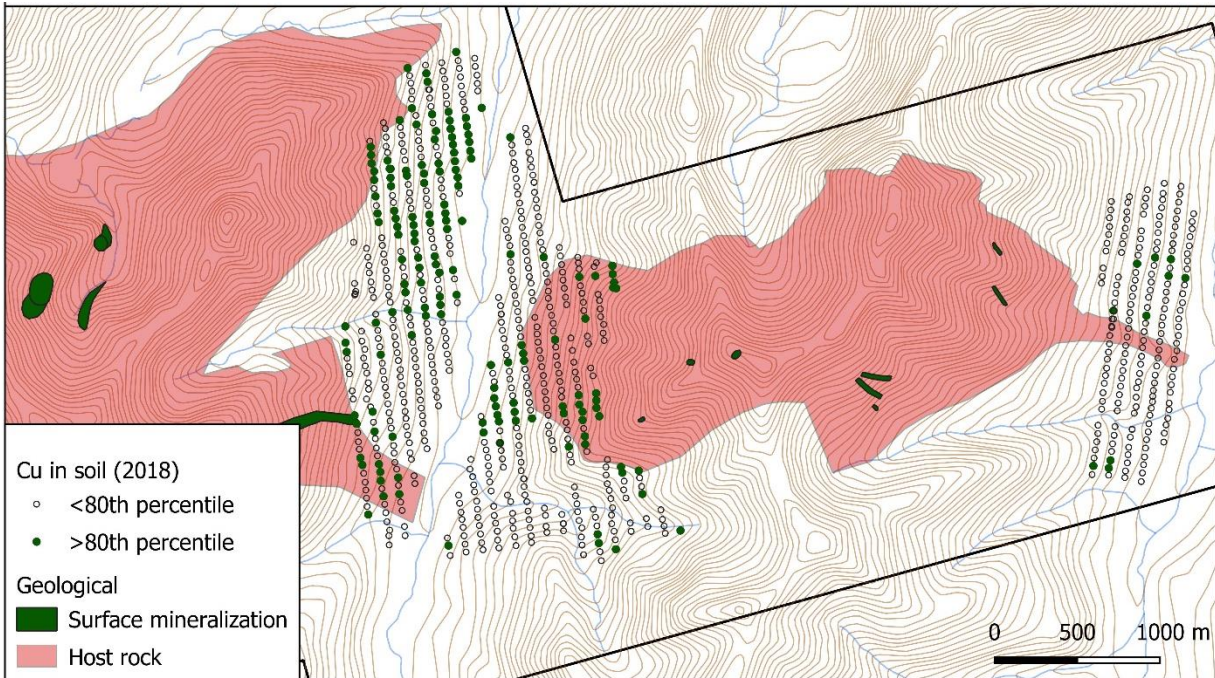


Figure 3. Soil samples with Cu > 80th percentile

5.5.3. Geophysical survey

Radiometric survey

A radiometric survey has outlined km-scale zonation on the claim as well as minor spot anomalies. The cobalt cirque area appears to be potassically altered with both moderately high potassium and thorium counts. On the ridges surrounding cobalt cirque the total count is reduced, thorium is reduced, and uranium increases. On the mountains east and west of the cobalt cirque area the total counts are further reduced and radiometry indicates predominantly uranium and potassium.

Second order spot anomalies are numerous but need to be individually tested. For example, the jasper, east Cu-Co and the South Co showings are centered on a small area of very low total count. Another larger area of low total counts is present near the soil sample highlighted in the previous section.

Magnetic survey

A magnetic survey outlined 3 large km-scale magnetic anomalies and numerous smaller ~100 m scale anomalies. One surficial anomaly consists of hematite-jasper altered carbonate with trace magnetite and chalcopyrite. The CC, East Cu-Co, South Co and SE spur zone are all proximal to shallow magnetic features. Several surficial magnetic anomalies are yet untested.

Inversion

An inversion of the magnetic data as well as post processing of radiometric data was performed by Southern Geoscience. The deliverables are available in digital file 3. The magnitudes of magnetic susceptibilities are similar to those on the Gawler Craton of Australia where oxidized breccia deposits occur. The inversion indicates that magnetic highs surrounding mineralization in the cobalt cirque area. It is yet unclear whether mineralization is associated with increased magnetite or on the margins of increased magnetite.

5.5.4. Prospecting and mapping

Several areas on the claim were investigated by a team of two geologists including the author. The purpose of the investigation was to confirm historical mineralized showings, to ground-truth target areas generated by the spectral survey, and to identify new mineralized showings.

5.5.5. Rock property measurements

Rock properties were measured in Vancouver by Walcott and associates. Density was determined from the weight of the samples in air and in distilled water at room temperature with corrections made for the weight of the suspension wire in water.

Magnetic susceptibility was carried out by making six measurements over the surface of the sample using a KT-9 susceptibility meter with the resultant average deemed the susceptibility of the sample. Here a range was unnecessary to be given as the readings were fairly uniform.

Inductive conductivity measurements were made with a GCM-2 meter manufactured by Geo Instruments of Australia. This handheld was developed and calibrated from a library of multitude mineral specimens and their respective conductivities.

Hand samples were cut to expose a flat surface and the conductivity of these were measured using a flat plate sensor with the caveat that the exposed surface be greater than the plate area.

For the galvanic and induced polarization studies the hand samples were fashioned into rectangular prisms. These were then mounted in molds with sterile resins and allowed to set.

These were then placed in a Buehler vacuum flask and the entrapped air quickly evacuated from their pores by the vacuum pump. The samples were then impregnated with distilled water under 26 " Hg., and allowed to sit for a few minutes before venting to atmospheric pressure. They were then transferred to a soaking tank filled with distilled water for a few days.

The resistivities and chargeabilities were determined by mounting the respective samples between two distilled water filled tanks, passing a low current – 0.5 to 5 microamps – through the outer electrodes using a GDD SCIP tester with a pulse frequency of 0.125 Hz., and reading primary – pulse on – and secondary voltages – pulse off – across the inner electrodes with the same tester using a delay time of 200 milliseconds and sampling 20 windows of 50 millisecond width.

6. Geological setting and mineralization

6.1. Regional geology

The geology of Yukon Territory is split into two different parts by the northwest striking Tintina fault. The Tintina fault is a dextral strike-slip fault with approximately 430 km of displacement. In general the Tintina Fault separates rocks of ancestral North American affinity to the North from allochthonous terranes in the South. The Monster Property lies entirely to the north of the Tintina fault.

The ancestral North American rocks to the north of the Tintina Fault comprise predominantly basinal rocks that were deposited from approximately 1.7 Ga to the middle Phanerozoic. Deposition was

punctuated by intervals of orogenesis, erosion, hydrothermal brecciation and magmatism (Thorkelson et al., 2005). The Proterozoic history of Yukon is recorded in several Proterozoic Inliers. The Monster Property occurs in the Ogilvie Inlier, in the central-west of Yukon Territory (**Error! Reference source not found.**) and contains hydrothermal breccias that were emplaced in deformed and metamorphosed basinal Late – Middle Proterozoic rocks.

6.1.1. The Wernecke Supergroup

The Wernecke Supergroup is the host rock to the hydrothermal breccias that host mineralization on the Monster Property. The Wernecke Supergroup consists of over 13 km of fine grained sedimentary carbonate and siliciclastic rock (Delaney, 1981; Thorkelson, 2000) that was deposited between 1.66 Ga and 1.60 Ga (Furlanetto et al., 2013). The entire Wernecke Supergroup was deposited as a passive margin on Laurentia (Furlanetto et al., 2016).

The Wernecke Supergroup is divided into three Groups. From old to young these groups are the Fairchild Lake Group, the Quartet Group and the Gillespie Lake Group. The Fairchild Lake Group consists of mud to siltstone and is locally metamorphosed to greenschist as a result of the Racklan Orogeny. The Quartet Group consists predominantly of well-bedded fine-grained siliciclastic rocks and shale. The Gillespie Lake Group consists predominantly of carbonate rocks, commonly with stromatolites, and fine-grained siliciclastic rocks (Delaney, 1981; Thorkelson, 2000).

The Wernecke Supergroup was deformed and metamorphosed during the ca. 1.6 Ga Racklan Orogeny (Thorkelson et al., 2005; Furlanetto et al., 2013). The Racklan Orogeny caused greenschist metamorphism of the lower part of the Wernecke Supergroup and thrusting and folding. The Racklan Orogeny is interpreted as the result of Australia-Laurentia collision by several researchers (Thorkelson and Laughton, 2016; Verbaas et al., 2018).

6.1.2. The Wernecke Breccia

The Wernecke Breccia comprise a set of hematitic breccia zones in Yukon Territory (Delaney, 1981). The breccias occur in the Wernecke Mountains, the Ogilvie Mountains and the southern Richardson Mountains (Thorkelson et al., 2001). The breccia zones in the Ogilvie Mountains were initially termed the Ogilvie Mountain Breccia (Lane, 1990), but were later considered a continuation of the Wernecke Breccia (Thorkelson et al., 2001). The Wernecke Breccia formed after the Racklan Orogeny (Mercier, 1989; Thorkelson, 2000). One of the breccia zones in the Wernecke Mountains was dated by U-Pb on metasomatic titanite at 1598.8 ± 1 Ma.

Individual Wernecke Breccia zones range from several metres across to 5 kilometres in size (Thorkelson, 2000). The breccia zones are tabular to roughly circular (Thorkelson et al., 2001). The breccia zones crosscut strata of the Wernecke Supergroup and deformational fabrics of the Racklan Orogeny. In the Ogilvie Mountains the Wernecke Breccia occur in a northern breccia belt and a southern breccia belt (Lane, 1990). The breccia belts are roughly aligned with the northern and southern edge of the Proterozoic Ogilvie Inlier and are aligned with younger faults (Lane and Godwin, 1992).

Alteration

The Wernecke Breccia is mainly potassically altered, although a large subset in the Wernecke Mountains are sodically altered (Laughton et al., 2003). Locally, calcic alteration is predominant. Albite, scapolite,

calcite, dolomite, orthoclase, ankerite, sericite and barite comprise the main alteration minerals (Hunt et al., 2005). Both alteration types are locally overprinted by chloritic and carbonate alteration in the form of disseminations and veins (Verbaas, 2017). Hitzman (1992) developed a model in which different alteration types were correlated to depth of breccia formation. However, as noted by Thorkelson et al. (2001a), this interpretation was based upon the incorrect premise that the Wernecke Breccia formed prior to deformation of the Wernecke Supergroup, a situation in which stratigraphic position could be equated to crustal depth. Hunt et al. (2005, 2011) related the host rock chemistry to the type of alteration, however, this interpretation is dependent on the presence of (meta-)evaporites in the Wernecke Supergroup for which there is no independent evidence (Verbaas, 2017). Carbon, sulfur, hydrogen, and oxygen isotopes appear to be buffered by the immediate country rock (Hunt et al., 2011). A large variation exists between the alteration at different mineral occurrences, which has been explained as varying halite dissolution, input of different fluids including magmatic and meteoric waters, and depth of formation (Hitzman, 1992; Kendrick et al., 2008; Gillen, 2010; Hunt et al., 2011).

Mineralization

Mineralization of the Wernecke Breccia is associated with hematite and magnetite and includes chalcopyrite, pitchblende, brannerite and cobaltite (Hunt et al., 2005). Elevated concentrations of Au are common in association with Cu but gold is not visible (Hunt et al., 2005). Mineralization of the Wernecke Breccia occurs as sulphide pods, veins, stringers, and disseminations. The most common Cu bearing sulphides are chalcopyrite and bornite, with minor chalcocite and tenorite. Other common Cu bearing minerals in fractures and on weathering surfaces are malachite, azurite, and chrysocolla. Cobalt occurs as cobaltite and erythrite in veins, stringers, blebs and disseminations. Uranium is common in many of the Wernecke Breccia zones and occurs as pitchblende and brannerite, but appears to be completely absent from the Monster Property (Setterfield, 2007).

The exact mineral paragenesis differs per mineral prospect but commonly follows three broad stages. The first stage coeval with early brecciation and characterized by potassic or sodic metasomatism abundant in magnetite ± hematite. The main phase of brecciation is accompanied by magnetite ± hematite ± chalcopyrite-pyrite mineralization, and the last stage may involve the deposition of carbonates ± magnetite, hematite, chalcopyrite and pyrite. Locally barite veins are abundant during the last stage (Hunt et al., 2005).

6.1.3. Post-brecciation

A roughly 150 m.y. hiatus separates the Wernecke Breccia from the subsequently deposited Pr1 basin (Medig, 2014). The Pr1 basin overlies the Wernecke Supergroup and Wernecke Breccia in the Ogilvie Mountains. This basin formed as an intracratonic rift basin and, together with similar basins further south on the Laurentian margin, represents rifting of Australia from Laurentia (Medig, 2014). The basin infill is characterized by immature sediments that were likely sourced from felsic intrusives.

The Pinguicula Group overlies the Wernecke Supergroup and Wernecke Breccia in the Wernecke Mountains. The Pinguicula Group consists of fine grained sediments that were deposited after 1.38 Ga (Medig, 2016).

6.1.4. Clasts within Wernecke Breccia

The Wernecke Breccia are predominantly heterolithic and clasts were derived not only from the immediate host rock, but also from formerly overly lithologies (Laughton et al., 2003; Furlanetto et al., 2013; Nielsen et al., 2013; Verbaas et al., 2018). Clasts within the Wernecke Breccia may include shale, carbonate rock, sandstone, greenschist, amygdaloidal basalts, sediments with soft sediment textures and mafic to intermediate intrusions (Thorkelson et al., 2001; Nielsen et al., 2013; Verbaas et al., 2015). The igneous clasts within Wernecke Breccia were sourced from a formerly overly thrust nappe which may have been the source of metals (Nielsen et al., 2013).

6.1.5. Correlation to IOCG deposits on Australia

The Wernecke Breccia are included in the IOCG deposit class (Hitzman et al., 1992). The Wernecke Breccia are considered a non-magmatic IOCG province (Hunt et al., 2007). The Wernecke Breccia have been correlated to the giant Olympic Dam deposit on the Gawler Craton, Australia (Thorkelson et al. 2001; Verbaas et al., 2018) on the basis of age, lithological similarity, and detrital zircons of sedimentary clasts within the breccia zones.

6.2. Property Geology

6.2.1. Wernecke Supergroup

The Monster Property is centered around several Wernecke Breccia zones that were emplaced within the Wernecke Supergroup (Lane, 1990; Lane and Godwin, 1992). The Wernecke Supergroup here consists of sediments of the Quartet Lake Group and the Gillespie Lake Group (Baknes, 1995; Lane and Godwin, 1992).

The Quartet Group consists of coarse quartzite to conglomerate, black shale, grey to black siltstone and grey mudstone. The conglomerate unit is highly variable and contains well sorted and sub-angular 0.2 – 2.0 cm maroon mudstone, chert, and quartz pebbles. The shale to siltstone is commonly well bedded and cleaved, and interbedded with quartzite (Baknes, 1995).

The Gillespie Lake Group consists of grey to buff weathering silty dolostone, and buff weathering grey to orange silty dolostone to dolostone. The latter is commonly stromatolitic and may contain silica replacements of stromatolites as ragged masses or rhythmic beds. In areas of brecciation and accompanying deformation the bedding is contorted and silica may be replaced by jasperoid (Baknes, 1995).

The Wernecke Breccia crosscut the Wernecke Supergroup shortly after the Racklan Orogeny (Thorkelson, 2000; Furlanetto et al., 2013). The mineralization and alteration on the Monster Property is localized within and adjacent to the Wernecke Breccia. How far the breccias extend in the subsurface is unknown.

6.2.2. Wernecke Breccia

All of the mineralization on the Monster Property occurs within or adjacent to the Wernecke Breccia. The Wernecke Breccia on the Monster Property is close to 1.6 Ga in age (Lane, 1990; Furlanetto et al., 2013). The three main Wernecke Breccia zones on the Monster Property extend for more than 15 km

NE-SW. The zones are elongated in a NE-SW direction and range from tabular to ellipsoidal to roughly circular with many apophyses.

The clasts within the Wernecke Breccia were sourced from the immediate Wernecke Supergroup, but likely also from formerly overlying igneous and sedimentary lithologies. Diorites that were mapped as continuous intrusions (Dyson, 1976; Baknes, 1995) may mostly be transported clasts within the breccia zones (Jones, 1999). The maroon and green mudstone and siltstones noted by Baknes (1995) may be derived from a formerly overlying sedimentary succession (Verbaas et al., 2014) that is linked to a sedimentary source on the Gawler Craton on Australia (Verbaas et al., 2018).

The Wernecke Breccia were separated into homolithic and heterolithic breccias by Lane (1990). Subsequent workers have used this terminology and attempted to map the breccias in detail using this distinction. However, the homolithic and heterolithic breccias may have sharp to gradational contacts, and whether a breccia is considered heterolithic or homolithic depends on the size of the area considered. In their entirety, the breccia zones are heterolithic.

Homolithic breccias are commonly located at the edge of the breccia zones and range from fractured wall-rock to crackle breccia to (less common) matrix supported breccia. The matrix of the homolithic breccias ranges from carbonate to clastic or soft sediment. Homolithic breccias commonly contain a low percentage of specular hematite, with the exception of maroon mudstone breccias which may contain up to 10% specular hematite (Baknes, 1995).

The heterolithic breccias contain a variety of clast types, including siltstone, shale, dolostone, diorite, banded iron formation, chert and quartzite. The matrix of the heterolithic breccias commonly contains quartz \pm chlorite \pm carbonate \pm specular hematite \pm sericite. Some heterolithic breccias have a clastic or soft sediment matrix. The breccias are commonly matrix supported with sub-angular fragments ranging from 1 cm to 1 m (Baknes, 1995; Jones, 1999).

6.2.3. Alteration

The alteration within the Wernecke Breccia zones is varied and appears to depend at least in part on the lithology of both the immediate wall-rock and the breccia clasts. Ferroan dolomite is ubiquitous in the breccia zones and may be in part the result of assimilation of Gillespie Lake Group wall-rock. Siderite is another common carbonate mineral and can locally be related to Mn-staining. Siderite is commonly associated with silica alteration in dolomites and spatially associated with clastic rocks of the Quartet Group (Jones, 1999).

Hematite occurs as specular hematite and earthy hematite, and hematite alteration is ubiquitous on the Monster Property. Earthy hematite is most common on the margins of the breccia zones, and specular hematite is more common towards the center and in association with diorite clasts. Many of the breccia clasts are partially or completely replaced by hematite and/or silica. It is possible that several 'maroon mudstones', 'jasperites' and 'banded iron formations' are in fact replaced clasts of sedimentary rock. Dark red hematite-carbonate veins occur in the Cobalt Cirque area (Jones, 1999).

Another common alteration style is layered silica and carbonate. This alteration appears to be localized in dolomitic host rock. The layers of silica and carbonate are ragged and contorted and it is unclear if they are related to the original bedding of the host rock. The rock has a very rough weathered surface. This style of alteration occurs over 200 x 400 m in the Jasper Zone (Jones, 1999).

Magnetite is uncommon but is present in some mineralized zones. Magnetite blebs and massive magnetite occur locally in the eastern part of the Monster Property within altered beds of a dolomite clast (Jones, 1999). A large magnetic high underlies the eastern Monster Property (Williams, 1997).

Chlorite alteration is pervasive in heterolithic breccia. This type of alteration is most commonly associated with diorite clasts and intrusions (Jones, 1999).

Potassic alteration is strongest in the western part of the Monster Property. Potassic alteration occurs as potassic feldspar and sericite alteration in breccia clasts and matrix. This type of alteration is less common in the eastern part of the Monster Property (Jones, 1999).

6.2.4. Structure

Primary bedding on the Monster Property forms a large EW striking anticline. Brecciation appears to be focused in the center of the breccia zone. Numerous steep faults striking roughly NS have been mapped by previous workers. These faults are commonly associated with drag folds in the Wernecke Supergroup strata. Aeromagnetic data implies a set of roughly EW striking faults is also present on the Monster Property. Drag folding associated with faults is common, and it is possible that the large EW anticline that encompasses the Monster Property is a drag fold associated with the Monster fault (Williams, 1997).

Structures that have been mapped on the basis of aeromagnetic data proved to be associated to mineralization during follow up geological mapping (Jones, 1999). The intersection between roughly NS faults and roughly EW striking faults appears to be an important control on mineralization. These structures may have provided bounds and/or pathways for breccia metasomatism and mineralization.

Several valleys on the Monster Property may represent major faults. The geology across the valley is markedly different and the valleys appear to be too linear to be purely erosional features. North trending valleys in the eastern Monster Property likely represent normal faults and linear steeply dipping NW trending valleys are faults of unknown type.

6.2.5. Mineralization

Mineralization on the Monster Mineral claim occurs within and immediately adjacent to the Wernecke Breccia. Mineralization commonly occurs as disseminated chalcopyrite ± cobaltite ± bornite, chalcopyrite-chalcocite-bornite stringers and disseminated cobaltite (Baknes, 1995). The type of alteration appears to depend on the lithology of the breccia clasts within and surrounding the mineralization (Caulfield, 1993; Baknes, 1995; Jones, 1999). For example, stringers of chalcopyrite and quartz occur within siliceous sedimentary clasts, and disseminated chalcopyrite occurs with chlorite within diorite fragments. Mineralization is commonly associated with increased potassic alteration, but also occurs without an apparent increase in alteration.

Numerous mineral occurrences on the property were described in detail during exploration programs from 1993 – 2003 (**Error! Reference source not found.**). These mineralized zones are described in the following section from roughly west to east. Several of these zones were found after contour soil sampling. Approximately 1500 soil samples were taken from 1975 to 1998.

The results of rock samples in the following tables is available in Yukon Assessment Reports (Caulfield, 1993; Baknes, 1995; Falls & Baknes, 1995; Jones, 1999; Setterfield, 2001, 2003; Setterfield & Tykajlo, 2002).

Choc and Zappa Zone

The Choc Zone consists of a discontinuous 8 x 50 m zone of mineralization. The size of the Choc Zone is limited by the extent of exposure. Mineralization occurs as disseminated bornite and chalcopyrite in brown weathering laminated dolostone. The dolostone host is distinctive from the surrounding stromatolitic and locally jasperoidal dolostone (Baknes, 1995).

The Zappa Zone occurs 25 m west of the Choc Zone and consists of a narrow zone of mineralization that is continuous for about 50 meters at a strike of 020°. The 020° structure that hosts the mineralization may be a fault zone. Mineralization consists of disseminated chalcopyrite and bornite along bedding with minor cobaltite in veinlets and fractures. The mineralization is strongest within the structure but persists about 15 m to the east (Jones, 1999).

Table 6.1. Selected results from the Choc and Zappa Zone (Jones, 1999)

Type	Choc and Zappa Zone				
	Locality	Cu (ppm)	Co (ppm)	Au (ppb)	Other
Grab	Choc	3870	5	<5	
Grab	Choc	2950	3	<5	
Grab	Choc	1780	3	<5	
5 m representative grab	Zappa	7460	300	<5	40 ppm Bi
select	Zappa	4.82%	597	<5	
4 m representative grab	Zappa	780	22	<5	

4900 Zone

The 4900 zone consists of a 70 x 100 m zone of mineralized subcrop and talus. Mineralization occurs as disseminated chalcopyrite in both matrix and clasts of a monolithic maroon mudstone breccia. The matrix of the breccia contains carbonate, specular hematite, and clastic mudstone. Chalcopyrite appears to be associated with increased hematite. Chalcopyrite with minor galena and sphalerite in laminated green mudstone and siltstone occurs in the southern part of the 4900 zone. The 4900 zone is poorly exposed, however soil geochemistry of >400 ppm Cu over a 700 x 100 – 400 area suggests continuous mineralization in the subsurface (Baknes, 1995).

Table 6.2. Selected results from the 4900 Zone (Baknes, 1995a)

Type	4900 zone			
	Cu (ppm)	Co (ppm)	Au (ppb)	Other
float	7364	28	30	
float	1.70%	24	160	
float	3880	50	<5	0.1% Pb, 0.4% Zn
float	7960	24	<5	1.47% Pb, 1.65% Zn

South Co Zone

The South Co zone is poorly exposed but may exceed 50 by 70 m. The main host rock to mineralization is brecciated to non-brecciated siltstone and silty dolostone with minor jasper beds. These lithologies are silicified and carbonate altered, both pervasively and through stringer stockworks. Cobaltite occurs in disseminated veins and as fracture fillings in association with chalcopyrite. Copper mineralization occurs as blebby chalcopyrite in quartz-carbonate stringers and as disseminations (Baknes, 1995).

Table 6.3. Selected results from the South Co zone (Baknes, 1995a; Setterfield & Tyjkalo, 2002)

South Co Zone				
Type	Cu (ppm)	Co (ppm)	Au (ppb)	Other
4 m chip	3005	113	3	
5 m chip	4357	461	18	
5 m chip	767	51	3	
Grab	3840	256	<5	
Grab	8110	130	<5	
Grab	3160	1.43%	180	
Grab	1.70%	2.80%	705	

East Cu-Co Zone

The East Cu-Co Zone is located on an east-west trending ridge and is exposed over a 10 x 100 m area. The zone straddles a contact between east-west striking green laminated siltstones that contain either BIF or stratabound replacement features resembling BIF, and pink dolomitic siltstones. Large diorite clasts or intrusions are proximal to the East Cu-Co Zone.

Two styles of mineralization occur within the East Cu-Co Zone. The first style occurs as quartz-dolomite-chalcopyrite stringer stockworks hosted in green and grey siltstones-mudstones. The second style occurs as cobaltite in stringers and haloes that crosscuts dolomitic siltstone with stratabound blebs of chalcopyrite (Baknes, 1995a).

Table 6.4. Selected results from the East Cu-Co Zone (Baknes, 1995a)

East Cu-Co Zone				
Type	Cu (ppm)	Co (ppm)	Au (ppb)	Other
Grab	153	1.87%	1040	
2 m chip	4940	83	<5	
Grab	124	5360	180	
3.8 m chip	9050	462	215	

CC Zone

The CC Zone occurs on a brecciated contact between diorite and purple mudstone. Two types of mineralization occur in the CC Zone. The first type consists of massive fine grained hematite and possibly tenorite with interstitial malachite. The massive hematite tenorite is botryoidal and occupies voids within a pink breccia consisting of orthoclase-quartz altered mudstone and diorite fragments. Abundant malachite occurs within voids in hematite/tenorite and within fractures. The second type of mineralization is hosted in variable orthoclase-silica-specularite altered purple mudstone near an intrusive lithology (Baknes, 1995b)

Table 6.5. Selected results from the CC Zone (Baknes, 1995a)

CC Zone				
Type	Cu (ppm)	Co (ppm)	Au (ppb)	Other
Float	21%	19	465	200 ppm Zn
Float	4680	14	<5	
Float	4980	50	<5	
Float	4530	22	<5	
Grab	28.50%	11	176	
2.3 m chip	2657	27	<5	
4.5 m chip	4324	13	<5	

SE Spur Zone

The Southeast Spur Zone is exposed on a southeast trending ridge. The zone lies on the margin of a diorite clast or intrusion. Lithologies within the Southeast Spur Zone are purple mudstone with green laminated mudstone-siltstone-BIF. Mineralization occurs as a quartz-carbonate-chalcopyrite stockwork, as disseminated chalcopyrite and pyrite blebs with haloes lacking hematite and as disseminated chalcopyrite throughout the purple mudstone (Baknes, 1995a).

Table 6.6. Selected results from the SE Spur Zone (Baknes, 1995a)

SE Spur Zone				
Type	Cu (ppm)	Co (ppm)	Au (ppb)	Other
12 m chip	2050	82	<5	
2.8 m chip	3110	116	15	
Grab	3110	23	<5	
Grab	2150	45	<5	

Champagne Zone

The Champagne Zone occurs close to the head of a valley and is exposed over a 20 x 25 m area. Mineralization is associated with the contact between dolomite and shale/wacke and occurs as blebby

to fracture controlled sulphides with minor malachite, azurite and erythrite on fractures. The Champagne Zone is open along strike in both directions (Jones, 1999).

Table 6.7. Selected results from the Champagne Zone (Jones, 1999).

Champagne Zone				
Type	Cu (ppm)	Co (ppm)	Au (ppb)	Other
5.6 m representative grab	3630	138	10	
3.0 m representative grab	47	2810	50	
7.2 m representative grab	636	546	<5	
float select	7030	1795	75	
2 m grab	3.34%	32	10	9.6 g/t Ag

Champagne North

Similar to the mineralization at the Champagne Zone, mineralization at Champagne North occurs along the contact of dolostone with shale/wacke. Mineralization occurs as chalcopyrite and bornite in brecciated, silica-carbonate altered dolomite and concretionary shale, locally with finely disseminated cobaltite. The Champagne North area contains anomalous Pb-Zn mineralization and strong pyrite alteration (Jones, 1999).

Table 6.8. Selected results from Champagne North (Jones, 1999; Setterfield, 2001)

Champagne North				
Type	Cu (ppm)	Co (ppm)	Au (ppb)	Other
4 m grab	1.41%	70	35	560 ppm Pb
float	11.35%	90	90	1415 ppm Pb, 63.4 g/t Ag
select	2570	45	40	1200 ppm Pb, 12.8 g/t Ag
float	2340	47	20	23.4% Zn, 5.7% Pb, 11.8 g/t Ag
grab	340	29	100	

Panther Showing

The Panther Showing is a 1 x 10 m zone of mineralization. The Panther Showing is situated close to a structure defined by aeromagnetism (EHW, 1997). Mineralization occurs as chalcopyrite-bornite in silica-altered dolomite associated with carbonate veining and potassic feldspar alteration (Jones, 1999).

Table 6.9. Selected results from the Panther Showing (Jones, 1999)

Type	Panther Showing			Other
	Cu (ppm)	Co (ppm)	Au (ppb)	
Select	1.30%	2140	90	
5 m representative grab	5080	1050	65	

Cobalt Cirque

Cobalt Cirque is a steep north facing cirque with several mineralized areas within it. The first area was termed the Upper Cobalt Cirque Showing in 1998 and occurs on the west slope immediately east of Cobalt Cirque. Two types of mineralization have been described from mapping and prospecting the cirque. The first type is a chalcopyrite-bornite-cobaltite-quartz stockwork in heterolithic and carbonate-rich breccias. Malachite, azurite and erythrite are indicative of mineralized outcrop. The second type is chalcopyrite and minor bornite in a dark green chlorite and hematite altered heterolithic breccia (Caulfield, 1993). The mineralization occurs at the contact of crackle brecciated dolomite and shale and is associated with shearing and diorite intrusions or clasts (Jones, 1999).

Table 6.10. Selected results from Cobalt Cirque (Caulfield, 1993; Baknes, 1995; Jones, 1999)

Type	Cobalt Cirque			Other
	Cu (ppm)	Co (ppm)	Au (ppb)	
Grab	4.20%	193	205	
Grab	1043	1.34	295	
Grab 4 m	5720	28	5	
5.6 m representative grab	1625	766	<5	
select	1.31%	49	<5	

Mark's Hi-grade Showing

Mark's Hi-grade occurs at the edge of exposure on the southeast wall of Cobalt Cirque. Mineralization is traceable along the edge of the outcrop for about 50 m upslope. Lower grade disseminated mineralization is approximately 30 meters wide. Mineralization consists of chalcopyrite, bornite, pyrite and cobaltite as disseminated blebs and veinlets in pink dolomite and shale (Jones, 1999).

Table 6.11. Selected results from Mark's Hi-grade Showing (Jones, 1999; Setterfield, 2001; Setterfield & Tyjkalo, 2002)

Marks Hi-Grade Showing				
Type	Cu (ppm)	Co (ppm)	Au (ppb)	Other
select	44.80%	9820	510	24 g/t Ag
5.0 m representative grab	2170	145	<5	
6.0 m representative grab	4620	341	50	
4.0 m representative grab	3030	367	<5	
3.0 m chip	5150	1265	25	

Goblin Showing

The Goblin Showing was discovered through soil sampling in 1994 and subsequent geological work in 1998. The Goblin Showing is mostly inaccessible due to the relief in the immediate area. Mineralization consists of bornite, chalcopyrite and cobaltite in a carbonate-quartz stockwork (Jones, 1999).

Table 6.12. Selected results from the Goblin Showing (Jones, 1999)

Goblin Showing				
Type	Cu (ppm)	Co (ppm)	Au (ppb)	Other
5.0 m representative grab	3870	23	<5	4.4 g/t Ag
5.0 m representative grab	4890	26	<5	5.6 g/t Ag
5.0 m representative grab	2850	32	10	4.0 g/t Ag
5.0 m representative grab	16300	45	80	32.0 g/t Ag
5.0 m representative grab	4220	36	125	5.2 g/t Ag
5.0 m representative grab	5210	46	15	7.0 g/t Ag
5.0 m representative grab	2550	36	35	
grab 1 m	1.40%	391	10	2.0 g/t Ag

Jasper Zone

The Jasper Zone is located at the intersection of a steep reverse fault to the south and northeast trending basement faults to the east and west. There is also a northwest trending fault on the north side of the zone (Williams, 1997). The Jasper Zone is 200 x 400 m and situated adjacent to a magnetic anomaly described by Williams (1997). The Jasper Zone is strongly silica and carbonate altered and derives its name from the jasper replacement of both breccia clasts and individual beds within dolomite. Two significant zones of mineralization about 10 – 15 x 30 – 50 m each occur within the Jasper Zone. Mineralization occurs as disseminated blebs and fracture fillings of chalcopyrite. The best mineralization appears to occur in carbonate altered host rock (Jones, 1999).

Table 6.13. Selected results from the Jasper Showing (Jones, 1999)

Type	Jasper Zone			Other
	Cu (ppm)	Co (ppm)	Au (ppb)	
6.8m chip	4530	15	15	
1.6 m chip	3640	7	<5	
select (5 m)			130	
7.0 m representative grab	4300	45	<5	

O'Hara Showing

The O'Hara Showing occurs at the intersection of two structures detected during the aeromagnetic survey in 1996 (Williams, 1997). The O'Hara Showing is 20 x 25 m zone that contains disseminated cobaltite, bornite and chalcopyrite in altered dolomite with quartz-carbonate veins (Jones, 1999).

Table 6.14. Selected results from the O'Hara Showing

Type	O'Hara Showing			Other
	Cu (ppm)	Co (ppm)	Au (ppb)	
select	1.27%	8640	715	
2.0 m chip	5030	1360	100	

7. Deposit type

The Monster Property hosts IOCG (iron oxide copper & gold) mineralization. IOCG deposits were defined by Hitzman (1992) as a separate deposit class. This deposit class is characterized by abundant hematite and magnetite, low in sulphides and commonly enriched in light rare earth elements (LREE, Hitzman et al., 1992; Groves et al., 2010). Since its definition the IOCG deposit class has become to incorporate a variety of deposits, obscuring the critical features of IOCG 'sensu stricto' deposits (Groves et al., 2010).

IOCG sensu stricto deposits are structurally controlled magmatic – hydrothermal and commonly contain significant volumes of breccia. Mineralization commonly occurs in sulphides that are paragenetically younger than, but closely associated with, low Ti-oxides. Commonly these deposits are temporally, but not necessarily spatially, associated with alkaline to sub-alkaline intrusions (Groves et al., 2010).

The Wernecke Breccia on the property is interpreted as a steep sided breccia pipe that contains igneous and potentially other fall-back clasts (Thorkelson, 2000; Thorkelson et al., 2001; Nielsen et al., 2013; Verbaas et al., 2018)

8. Exploration

Go Metal's 2019 program used a combination of fixed wing (Great River Air) and helicopter access (Fireweed). The main camp was provided by Dan Reynolds and outfitted and staffed by Allin Exploration Solutions and Groundtruth Exploration.

Improvements were made to the company's remote sensing database. A new DEM (Arctic-DEM, freely available) at 2m resolution was used at the start of the season to improve the 2018 structural interpretation. Landsat 8 images were processed in a similar manner to Landsat 5 images of the 2018 remote sensing survey.

Go Metals has reprocessed historical gravity data with a new government DEM in April of 2019, to assess 1) whether the historical gravity data was of high quality and 2) whether reprocessing with a higher resolution DEM would yield better data. Several geological features, independently confirmed by magnetic data, were evident in the reprocessed dataset. Based on these results Go Metals retained MWH Geosurveys to survey 3 areas on the claim with roughly 100 x 100 m station density. Data is delivered in a Digital Appendix.

The company retained Groundtruth Exploration for a drone photogrammetry survey. Deliverables included a 15 cm DEM that was subsequently used for the gravity processing. The DEM and the photogrammetry model will both be used for further structural work. See Map 2 for the DEM. The size of the dataset (70 gb) precludes digital delivery.

The gravity was post-processed in conjunction with the magnetic data obtained in 2018 and with the IP/resistivity obtained in 2019 by Southern Geoscience. The gravity data indicates large anomalies that partly overlap with magnetic and IP anomalies in the west and east area of the claim, and stand-alone anomalies in the center of the claim. The data is delivered a Digital Appendix.

An IP/resistivity survey was carried out by Groundtruth exploration. Out of 8 planned IP/resistivity lines of 820 m, 7 lines yielded good data and were inverted in 2D and 3D. The lines were spaced 25 – 50 meters apart with an electrode spacing of 5 – 10 m. Data was obtained using an AGI supersting. The raw data are delivered in the Digital appendix.

The property was mapped for alteration. The alteration map is present in Map 1. A set of rock samples was sent to the MS Analytical in Langley. The rock samples are all grab samples from across the property. The samples grade up to 22.3% Cu and 1.6% Co. Sample location data are reported in Map 1 and COAs are reported in appendix 1. Rock sample locations and descriptions are reported in the digital appendix.

A set of 28 rock samples was sent to Groundtruth Exploration to identify specific gravity, magnetic susceptibility and electric properties. Rock sample locations, measurements and descriptions are reported in the digital appendix.

9. Discussion

The geophysical rock properties indicate that gravity anomalies will likely be subtle, as the measured specific gravity of rock samples ranges does not exceed 2.9 g/cm³. The inversion error on 11-m voxels is approximately 0.03 mgal. The modeled average density of 2.67 g/cm³ is consistent with the expected average density from the rock property measurements. These data imply that the modeling should be able to highlight subtle gravity anomalies.

The IP/resistivity survey highlights IP anomalies on both the western and eastern area. IP anomalies on the claim can be either associated with earthy hematite, pyrite, or with sulphide mineralization. In the

western area, the IP anomaly is coincident with a resistivity low, gravity high, and partly with a magnetic anomaly. The area is further characterized by extensive surface mineralization. The coincidence of these anomalies and the mineralization is encouraging, and this area should be drill-tested.

The IP anomaly measured in the eastern area is partly coincident with a magnetic anomaly and connected to a substantial gravity anomaly at depth. The geophysical anomalies are all below surface and there is little surface mineralization around them. However, the intensity of alteration above the magnetic anomalies appears to increase at lower elevations.

The center area contains a large gravity anomaly underneath a ridge. This gravity anomaly is in the extension of the panther and goblin surface showings and offsets by a north trending fault. The area is too rugged for extensive surface mapping or geophysical surveying.

10. Conclusions

The combination of geochemical data, surface mineralization and alteration, and geophysical data indicate the potential for mineralization in the subsurface. However, care must be taken in the interpretation of the geophysical data since no geophysical dataset uniquely targets mineralization. The surface mapping and geophysical data collected at the Monster Property are used to make the property drill-ready.

11. References

- Baknes, M.E., 1995, 1994 Geological report on the Monster 1 - 265 claims: Yukon Assessment Report, v. 93260.
- Caulfield, D.A., 1994, 1993 Geological Report on the Monster 41 - 72 Claims: Yukon Assessment Report, v. 93204.
- Caulfield, D.A., 1994, 1993 Geological report on the Monster 1-40 Claims and 1993 Geological Report on the Monster 41 - 72 Claims: Yukon Assessment Report, v. 93204.
- Delaney, G.D., 1985, The Middle Proterozoic Wernecke Supergroup, Wernecke Mountains, Yukon Territory: University of Western Ontario, 373 p.
- Doherty, R. A., 2002, Technical Report on the Monster Copper Property, Dawson Mining District, Yukon, 43-101 report for Monster Copper Resources Inc.
- Dyson, C., 1976, Geological Mapping Survey on the DAS 1 - 42 Mineral Claims: Yukon Assessment Report, v. 90216.
- Dyson, C. V, 1976, Geochemical soil survey on the ID No. 1 Group of Mineral Claims and the ID no. 2 Group of Mineral Claims: Yukon Assessment Report, v. 90068.
- Dyson, C. V, 1976, Geological Survey on the ID 11- 16 Claims: Yukon Assessment Report, v. 9141.
- Dyson, C. V, 1976, Geochemical Survey on the DAS 1 - 42 Claims: Yukon Assessment Report, v. 90138.

- Dyson, C. V, 1977, Geochemical soil survey on the ID 1 - 10, 11- 16, 17 - 26, 61 - 64, 66 - 67, 69 – 72 Claims: Yukon Assessment Report, v. 90241.
- Falls, R.B., and Baknes, M.E., 1995, 1994 Geological report on the Cookie 1 - 20 claims: Yukon Assessment Report, v. 93296.
- Furlanetto, F., Thorkelson, D.J., Rainbird, R.H., Davis, W.J., Gibson, H.D., and Marshall, D.D., 2016, The Paleoproterozoic Wernecke Supergroup of Yukon, Canada: Relationships to orogeny in northwestern Laurentia and basins in North America, East Australia, and China: *Gondwana Research*, v. 39, p. 14–40, doi: 10.1016/j.gr.2016.06.007.
- Furlanetto, F., Thorkelson, D.J., Daniel Gibson, H., Marshall, D.D., Rainbird, R.H., Davis, W.J., Crowley, J.L., and Vervoort, J.D., 2013, Late Paleoproterozoic terrane accretion in northwestern Canada and the case for circum-Columbian orogenesis: *Precambrian Research*, v. 224, p. 512–528, doi: 10.1016/j.precamres.2012.10.010.
- Gillen, D., 2010, A study of IOCG-related hydrothermal fluids in the Wernecke Mountains, Yukon Territory, Canada: PhD Thesis, James Cook University, Townsville, Australia
- Hitzman, M.W., Oreskes, N., and Einaudi, M.T., 1992, Geological characteristics and tectonic setting of proterozoic iron oxide (CuUAuREE) deposits: *Precambrian Research*, v. 58, p. 241–287, doi: 10.1016/0301-9268(92)90121-4.
- Hunt, J.A., Baker, T., Cleverley, J., Davidson, G.J., Fallick, A.E., and Thorkelson, D.J., 2011, Fluid inclusion and stable isotope constraints on the origin of Wernecke Breccia and associated iron oxide – copper – gold mineralization, Yukon: *Canadian Journal of Earth Sciences*, v. 48, p. 1425–1445, doi: 10.1139/e11-044.
- Hunt, J., Baker, T., and Thorkelson, D.J., 2005, Regional-scale Proterozoic IOCG-mineralized breccia systems: Examples from the Wernecke Mountains, Yukon, Canada: *Mineralium Deposita*, v. 40, p. 492–514, doi: 10.1007/s00126-005-0019-5.
- Jones, M.I., 1999, 1998 Geological mapping, prospecting, rock and soil geochemical sampling program on the monster property, Monster 1 - 265 and Cookie 1 - 58 claims: Yukon Assessment Report, v. 93956.
- Kendrick, M.A., Honda, M., Gillen, D., Baker, T., and Phillips, D., 2008, New constraints on regional brecciation in the Wernecke Mountains, Canada, from He, Ne, Ar, Kr, Xe, Cl, Br and I in fluid inclusions: *Chemical Geology*, v. 255, p. 33–46, doi: 10.1016/j.chemgeo.2008.05.021.
- Lane, R.A., 1990, Geologic setting and petrology of the Proterozoic Ogilvie Mountain breccias of the Coal Creek Inlier, Southern Ogilvie Mountains, Yukon Territory. MSc Thesis. The University of British Columbia, Canada, 243 p.
- Lane, R.A., and Godwin, C.I., 1992, Geology of the Ogilvie Mountains Breccias, Coal Creek Inlier (NTS 116B/11,13,14), Yukon Territory. Exploration and Geological Services Division, DIAND, Open File 1992-1

- Medig, K.P.R., Thorkelson, D.J., Davis, W.J., Rainbird, R.H., Gibson, H.D., Turner, E.C., and Marshall, D.D., 2014, Pinning northeastern Australia to northwestern Laurentia in the Mesoproterozoic: *Precambrian Research*, v. 249, p. 88–99, doi: 10.1016/j.precamres.2014.04.018.
- Medig, K.P.R., Turner, E.C., Thorkelson, D.J., and Rainbird, R.H., 2016, Rifting of Columbia to form a deep-water siliciclastic to carbonate succession: The Mesoproterozoic Pinguicula Group of northern Yukon, Canada: *Precambrian Research*, v. 278, p. 179–206, doi: 10.1016/j.precamres.2016.03.021.
- Mercier, E., 1989, Tectoniques d'origine compressive dans le Proterozoique du nord de la Cordillere Canadienne (montagnes Ogilvie, Yukon): *Canadian Journal of Earth Science*, v. 26, p. 199–205.
- Nielsen, A.B., Thorkelson, D.J., Gibson, H.D., and Marshall, D.D., 2013, The Wernecke igneous clasts in Yukon, Canada: Fragments of the Paleoproterozoic volcanic arc terrane Bonnetia: *Precambrian Research*, v. 238, p. 78–92, doi: 10.1016/j.precamres.2013.09.017.
- Setterfield, T., 2007, 2007 Uranium analytical work on the Monster Property, Monster, Cookie and CO Claims: Yukon Assessment Report, v. 94186.
- Setterfield, T., 2002, 2001 Geological reconnaissance and rock geochemical sampling program on the scary property, Scary 8 and 10 - 20 claims: Yukon Assessment Report, v. 94370.
- Setterfield, T., and Tykajlo, R., 2003, 2002 Geological reconnaissance, rock geochemical sampling program and gravity survey on the monster property: Yukon Assessment Report, v. 94354.
- Setterfield, T., and Tykajlo, R., 2004, 2003 Geological Reconnaissance, Gravity Survey and diamond drilling on the Monster Property: Yukon Assessment Report, v. 94430.
- Thorkelson, D.J., 2000, Geology and mineral occurrences of the Slats Creek, Fairchild Lake and "Dolores Creek" areas, Wernecke Mountains (106D/16, 106C/13, 106C/14), Yukon Territory: v. 10, 1-73 p.
- Thorkelson, D.J., Abbott, J.G., Mortensen, J.K., Creaser, R.A., Villeneuve, M.E., Mcnicoll, V.J., and Layer, P.W., 2005, Early and Middle Proterozoic evolution of Yukon, Canada: *Canadian Journal of Earth Sciences*, v. 42, p. 1045–1071, doi: 10.1139/E04-075.
- Thorkelson, D.J., and Loughton, J.R., 2016, Paleoproterozoic closure of an Australia-Laurentia seaway revealed by megaclasts of an obducted volcanic arc in Yukon, Canada: *Gondwana Research*, v. 33, p. 115–133, doi: 10.1016/j.gr.2015.01.004.
- Thorkelson, D.J., Mortensen, J.K., Davidson, G.J., Creaser, R.A., Perez, W.A., and Abbott, J.G., 2001, Early Mesoproterozoic intrusive breccias in Yukon, Canada: The role of hydrothermal systems in reconstructions of North America and Australia: *Precambrian Research*, v. 111, p. 31–55, doi: 10.1016/S0301-9268(01)00155-3.
- Verbaas, J., Thorkelson, D.J., Gibson, H.D., Marshall, D.D., and Milidragovic, D., 2015, Soft sediment textures in clasts in Wernecke Breccia: Reconstruction of an eroded late Paleoproterozoic succession in northern Yukon, in MacFarlane, M.G., Nordling, M.G., and Sacks, P.J. eds., *Yukon Exploration and Geology 2014*, Yukon Geological Survey, p. 145–156.

Verbaas, J., Thorkelson, D.J., Crowley, J.L., Davis, W.J., Foster, D.A., Gibson, H.D., Marshall, D.D., and Milidragovic, D., 2018, A sedimentary overlap assemblage links Australia to northwestern Laurentia at 1.6 Ga: *Precambrian Research*, v. 305, p. 19–39, doi: 10.1016/j.precamres.2017.10.001.

Verbaas, J., 2017, Paleoproterozoic to Mesoproterozoic evolution of Yukon Territory, Canada. PhD Thesis, Simon Fraser University, Burnaby, Canada

Williams, E.H., 1997, Structural interpretation and targeting of Monster environs geophysical survey. Yukon Territory, Canada: Yukon Assessment Report, v. 93600.

Certificate

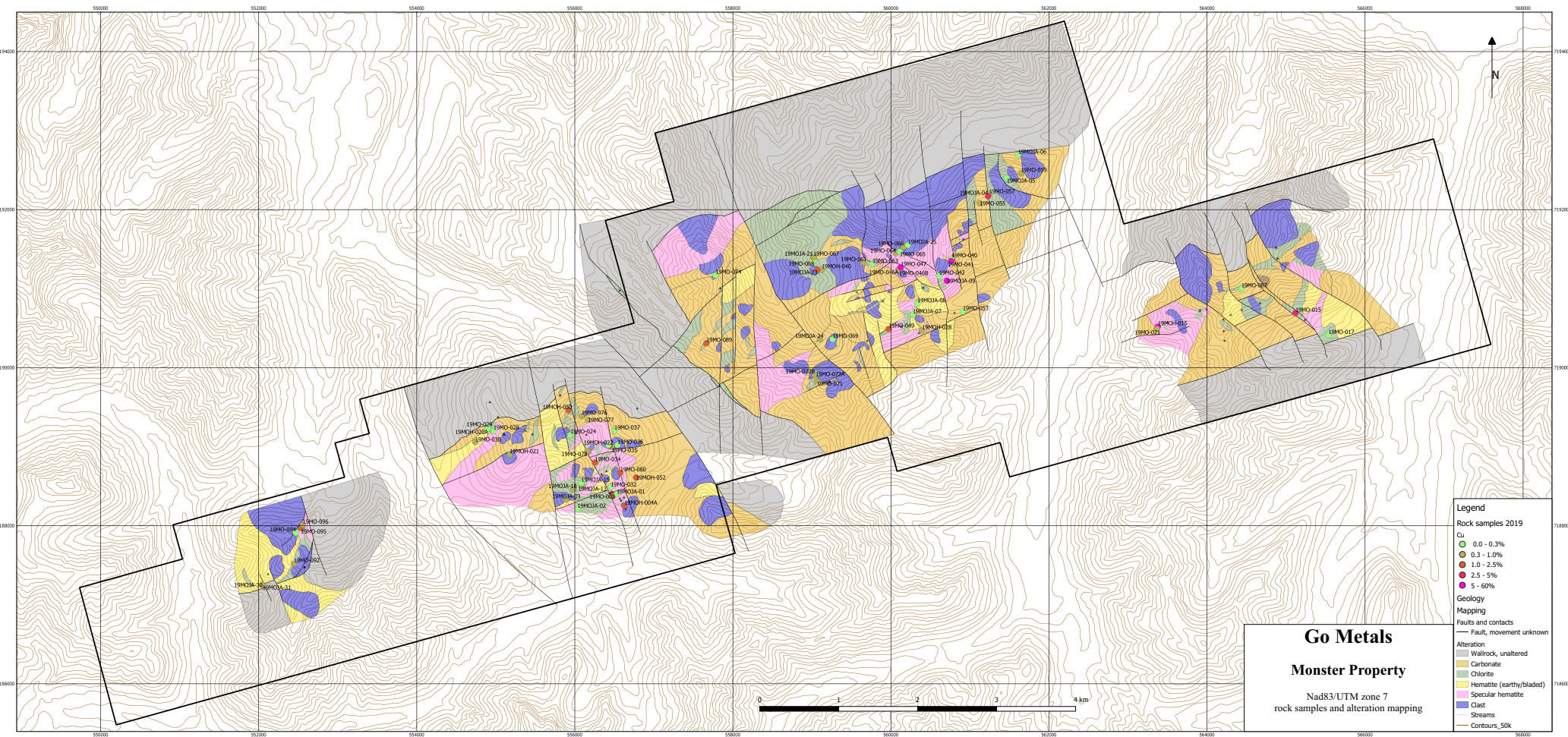
CERTIFICATE OF AUTHOR

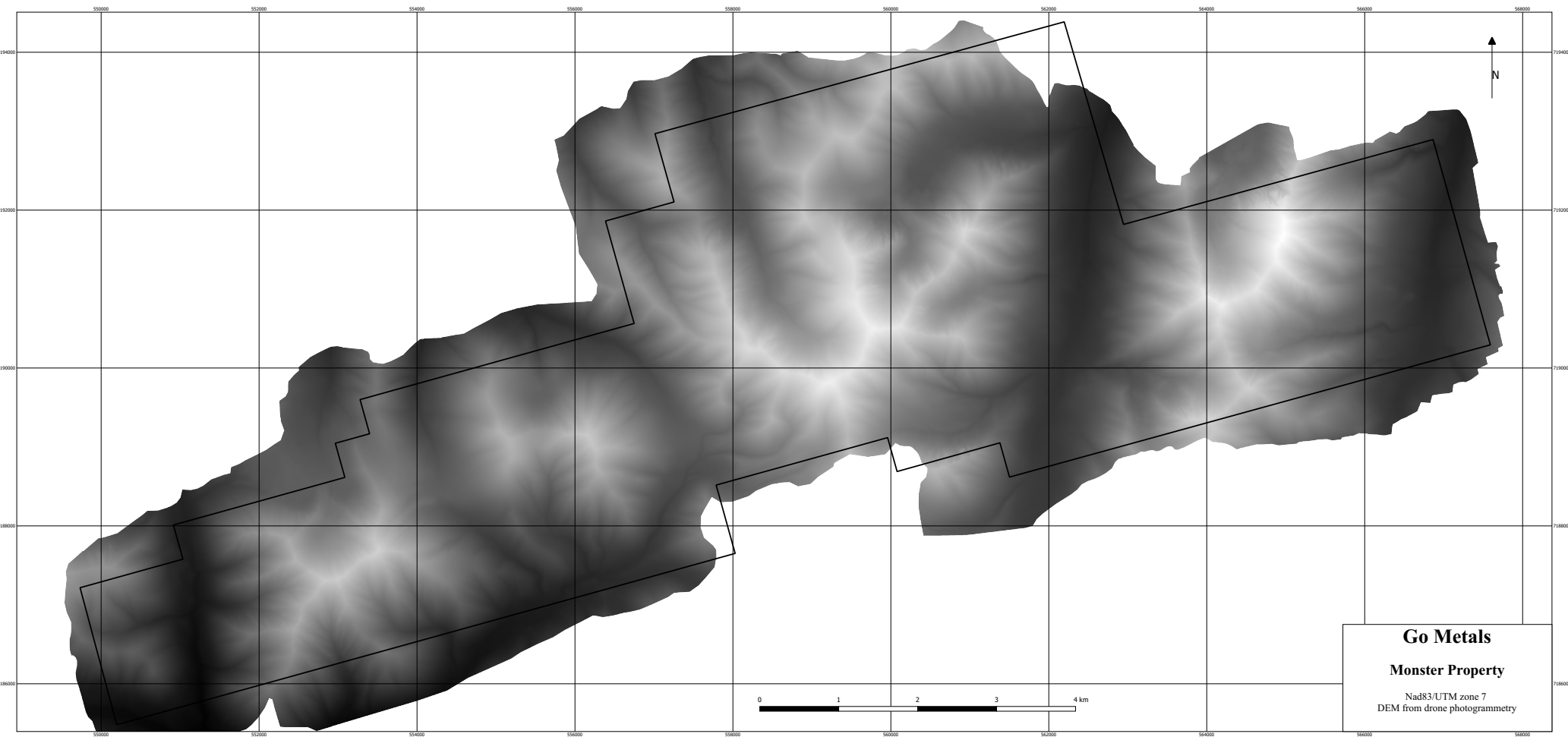
I, Jacob Verbaas do hereby certify that:

1. I am currently employed as a geologist.
2. This certificate applies to the Technical Report titled “2019 Geological, geophysical and remote sensing work on the Monster Property”.
3. I graduated in 2009 from Utrecht University with a B.Sc. degree in Earth Sciences.
4. I graduated in 2011 from Utrecht University with an M.Sc. degree in Geology.
5. I graduated in 2017 from Simon Fraser University with a Ph.D. degree in Geology.
6. I am a member in good standing of the Association of Professional Engineers and Geoscientists of British Columbia, Canada, Professional Geologist (No. 207416).
7. I have intermittently practiced my profession from 2011 to 2017 and continuously practiced my profession since late 2017.

Dated January 31st 2019.

Jacob Verbaas





Go Metals
Monster Property
Nad83/UTM zone 7
DEM from drone photogrammetry



MSALABS

MSALABS
Unit 1, 20120 102nd Avenue
Langley, BC V1M 4B4
Phone: +1-604-888-0875

To: **Go Cobalt Mining Corp.**
1100 Melville Street
Vancouver, BC, V6E 4A6
Canada

TEST REPORT: YVR1910514

Project Name: Monster 2019
Job Received Date: 29-Jul-2019
Job Report Date: 26-Aug-2019
Number of Samples: 90
Report Version: Final

COMMENTS:

Coarse gold may be present in some samples.

Test results reported relate to the tested samples only on an "as received" basis. Unless otherwise stated above, sufficient sample was received for the methods requested and all samples were received in acceptable condition. Analytical results in unsigned reports marked "provisional" are subject to change, pending final QC review and approval. The customer has not provided any information that can affect the validity of the test results. Please refer to MSALABS' Schedule of Services and Fees for our complete Terms and Conditions. Preliminary results are applicable when a portion of samples in a job is 100% completed and reported or 1 of a number of methods on the same job have been completed 100%. Results cannot change, but additional results or results for additional methods can be added.

SAMPLE PREPARATION	
METHOD CODE	DESCRIPTION
PRP-910	Dry, Crush to 70% passing 2mm, Split 250g, Pulverize to 85% passing 75µm

ANALYTICAL METHODS	
METHOD CODE	DESCRIPTION
FAS-111	Au, Fire Assay, 30g fusion, AAS, Trace Level
ICF-6Cu	Cu, 0.2g, 4-Acid, ICP-AES, Ore Grade
ICA-6Co	Co, 0.4g, 3:1 Aqua Regia, ICP-AES, Ore Grade
ICA-6Cu	Cu, 0.4g, 3:1 Aqua Regia, ICP-AES, Ore Grade
IMS-131	Multi-Element, 20g, 3:1 Aqua Regia, ICP-AES/MS, Ultra Trace Level

Signature:

Yvette Hsi, BSc.
Laboratory Manager
MSALABS



MSALABS
 Unit 1, 20120 102nd Avenue
 Langley, BC V1M 4B4
 Phone: +1-604-888-0875

To: **Go Cobalt Mining Corp.**
1100 Melville Street
Vancouver, BC, V6E 4A6
Canada

TEST REPORT:	YVR1910514
---------------------	-------------------

Project Name: Monster 2019
 Job Received Date: 29-Jul-2019
 Job Report Date: 26-Aug-2019
 Report Version: Final

	Sample Type	PWE-100 Rec. Wt. kg	Method Analyte Units	FAS-111 Au ppm	ICF-6Cu Cu %	ICA-6Co Co %	ICA-6Cu Cu %	IMS-131 Ag ppm	IMS-131 Al %	IMS-131 As ppm	IMS-131 Au ppm	IMS-131 B ppm
		0.01	LOR	0.005	0.001	0.001	0.001	0.01	0.01	0.1	0.0005	10
Granite Blank	QC-P-BK	--						0.01	0.98	0.8	<0.0005	<10
Granite Blank	QC-P-BK	--						0.01	1.11	0.7	<0.0005	<10
034752	Rock	1.63		0.033			1.054	0.61	5.10	376.8	0.0342	21
034753	Rock	1.66		0.071			1.229	1.14	2.95	140.4	0.0141	16
034754	Rock	0.65		0.009			1.289	0.27	3.92	2.0	0.0091	26
034755	Rock	0.96		0.075			2.722	2.31	3.85	5.2	0.1583	19
034756	Rock	1.16		0.020				0.12	3.91	0.5	0.0221	21
034757	Rock	0.31		0.028	22.332		>10	0.28	0.78	8.8	0.0121	10
034758	Rock	0.58		0.010				0.18	0.23	47.3	0.0128	<10
034759	Rock	1.28						0.06	1.92	0.6	0.0009	19
034760	Rock	0.73						0.22	1.68	1.4	0.0020	17
034761	Rock	0.68		<0.005				0.27	0.81	7.1	0.0083	17
034762	Rock	0.65		0.013				0.30	0.73	7.5	0.0175	17
034763	Rock	0.83		0.021				0.13	0.77	27.9	0.0195	20
034764	Rock	0.67						0.18	0.48	8.9	0.0046	15
034765	Rock	0.94						0.35	0.56	8.7	0.0023	16
034766	Rock	0.52		0.015				0.28	2.03	22.8	0.0144	16
034767	Rock	0.52					2.336	0.42	1.78	130.1	0.0038	25
034768	Rock	1.21		0.061				1.46	0.39	18.9	0.0493	10
034768PD	QC-PD	--		0.029				1.54	0.40	18.5	0.0361	16
034769	Rock	0.78		0.279		1.463		0.16	0.92	>10000	0.2580	18
034770	Rock	0.52						1.95	0.02	64.0	0.0022	<10
034771	Rock	0.66		0.122			1.700	2.80	1.17	3461.2	0.1360	10
034772	Rock	1.03		0.019				0.09	0.36	3764.0	0.0198	<10
034773	Rock	0.44						0.10	0.33	8.2	0.0022	15

Please refer to the cover page for comments regarding this test report.



MSALABS
 Unit 1, 20120 102nd Avenue
 Langley, BC V1M 4B4
 Phone: +1-604-888-0875

To: **Go Cobalt Mining Corp.**
1100 Melville Street
Vancouver, BC, V6E 4A6
Canada

TEST REPORT:	YVR1910514
---------------------	-------------------

Project Name: Monster 2019
 Job Received Date: 29-Jul-2019
 Job Report Date: 26-Aug-2019
 Report Version: Final

	Sample Type	PWE-100 Rec. Wt. kg	Method Analyte Units	FAS-111 Au ppm	ICF-6Cu Cu %	ICA-6Co Co %	ICA-6Cu Cu %	IMS-131 Ag ppm	IMS-131 Al %	IMS-131 As ppm	IMS-131 Au ppm	IMS-131 B ppm
		0.01	LOR	0.005	0.001	0.001	0.001	0.01	0.01	0.1	0.0005	10
034774	Rock	0.55		0.041			5.919	11.84	0.28	126.7	0.0423	26
034775	Rock	0.70		0.009				0.95	1.24	188.6	0.0084	10
034776	Rock	0.79		0.021				1.19	1.68	935.5	0.0186	14
034777	Rock	0.91		0.258				5.34	1.46	6218.3	0.1318	14
034778	Rock	1.00		0.519			6.100	15.20	0.16	8237.6	0.5187	<10
034779	Rock	0.76		0.007			1.234	5.05	3.20	10.9	0.0127	12
034780	Rock	0.66						0.06	0.06	6.2	0.0008	11
034781	Rock	0.40						0.76	1.06	41.9	0.0031	10
034782	Rock	0.78		0.012				3.17	0.44	9.1	0.0051	<10
034783	Rock	0.53						0.53	1.24	6.3	0.0011	10
034784	Rock	0.64						0.24	0.58	3.0	0.0014	<10
034785	Rock	0.51						3.94	1.46	77.3	<0.0005	<10
034786	Rock	0.80		0.375		1.112		0.29	0.27	>10000	0.2951	12
034787	Rock	0.75		0.016				1.68	2.64	83.3	0.0136	17
034788	Rock	0.58						0.52	1.36	257.6	0.0031	10
034789	Rock	0.54		0.111				2.69	0.40	155.6	0.0549	<10
034790	Rock	0.81		0.189				2.96	0.87	>10000	0.1817	<10
034791	Rock	0.53		0.079				0.12	0.95	2484.9	0.0096	<10
034792	Rock	0.65						1.56	1.06	168.2	0.0038	<10
034793	Rock	0.63		0.020				1.07	0.49	55.6	0.0155	<10
034794	Rock	0.54		0.132				12.50	0.74	56.2	0.0904	<10
034795	Rock	0.59						1.36	1.21	17.2	<0.0005	<10
034796	Rock	0.98						3.65	0.08	18.0	0.0007	<10
034797	Rock	0.54						1.42	2.20	382.5	0.0019	18
034798	Rock	0.66		0.015			1.037	1.68	3.52	7.6	0.0119	21

Please refer to the cover page for comments regarding this test report.



MSALABS
 Unit 1, 20120 102nd Avenue
 Langley, BC V1M 4B4
 Phone: +1-604-888-0875

To: **Go Cobalt Mining Corp.**
1100 Melville Street
Vancouver, BC, V6E 4A6
Canada

TEST REPORT:	YVR1910514
---------------------	-------------------

Project Name: Monster 2019
 Job Received Date: 29-Jul-2019
 Job Report Date: 26-Aug-2019
 Report Version: Final

	Sample Type	PWE-100 Rec. Wt. kg	Method Analyte Units	FAS-111 Au ppm	ICF-6Cu Cu %	ICA-6Co Co %	ICA-6Cu Cu %	IMS-131 Ag ppm	IMS-131 Al %	IMS-131 As ppm	IMS-131 Au ppm	IMS-131 B ppm
		0.01	LOR	0.005	0.001	0.001	0.001	0.01	0.01	0.1	0.0005	10
034799	Rock	0.71		0.065				0.34	0.46	49.5	0.0669	28
034800	Rock	0.79						1.41	0.47	250.0	0.0024	<10
034801	Rock	0.83		0.011				1.52	4.66	9.0	0.0085	17
034802	Rock	0.92		0.021				0.39	3.20	50.3	0.0155	13
034803	Rock	0.72		0.024			2.330	6.44	3.18	4.8	0.0178	11
034804	Rock	0.56		0.016			1.880	21.08	4.21	3.7	0.0117	12
034805	Rock	0.86						0.11	2.88	19.5	0.0027	10
034806	Rock	0.97		0.030			1.005	0.27	3.49	13.4	0.0280	25
034807	Rock	0.65						1.04	0.06	12.2	0.0009	<10
034808	Rock	0.99						0.30	0.04	29.9	0.0011	11
034809	Rock	0.57		0.019			1.221	0.62	0.46	9.8	0.0181	<10
034810	Rock	0.69		0.011				0.47	1.57	5.0	0.0083	12
034951	Rock	1.15						0.10	0.05	36.9	0.0014	<10
034952	Rock	1.48						0.03	2.64	2.5	0.0033	11
034953	Rock	1.55		0.026				0.51	0.28	7993.6	0.0205	<10
034954	Rock	1.10		0.011			3.429	1.26	0.52	39.6	0.0091	<10
034955	Rock	1.22						3.34	0.97	82.9	0.0019	23
034956	Rock	1.51						0.24	1.98	3.6	0.0020	<10
034957	Rock	1.40						0.26	0.11	3.3	0.0016	<10
034958	Rock	1.02						0.33	0.12	1.0	0.0015	<10
034959	Rock	0.71		0.035			7.314	8.54	0.22	17.5	0.0311	20
034960	Rock	1.63		0.017				0.12	3.01	385.2	0.0159	18
034961	Rock	2.99		0.010				0.11	3.76	57.3	0.0057	16
034961PD	QC-PD	--		0.007				0.12	3.88	62.0	0.0061	17
034962	Rock	2.18						0.20	4.60	72.0	0.0044	21

Please refer to the cover page for comments regarding this test report.



MSALABS
 Unit 1, 20120 102nd Avenue
 Langley, BC V1M 4B4
 Phone: +1-604-888-0875

To: **Go Cobalt Mining Corp.**
1100 Melville Street
Vancouver, BC, V6E 4A6
Canada

TEST REPORT:	YVR1910514
---------------------	-------------------

Project Name: Monster 2019
 Job Received Date: 29-Jul-2019
 Job Report Date: 26-Aug-2019
 Report Version: Final

	Sample Type	PWE-100 Rec. Wt. kg	Method Analyte Units	FAS-111 Au ppm	ICF-6Cu Cu %	ICA-6Co Co %	ICA-6Cu Cu %	IMS-131 Ag ppm	IMS-131 Al %	IMS-131 As ppm	IMS-131 Au ppm	IMS-131 B ppm
		0.01	LOR	0.005	0.001	0.001	0.001	0.01	0.01	0.1	0.0005	10
034963	Rock	2.55		0.009				0.19	4.06	167.5	0.0064	22
034964	Rock	2.30		0.008				0.23	4.34	114.9	0.0066	22
034965	Rock	1.28						0.02	2.65	96.1	0.0020	17
034966	Rock	1.22						0.03	2.84	38.3	0.0018	25
034967	Rock	1.03		0.023				0.06	2.05	1002.5	0.0215	14
034968	Rock	2.30						0.15	2.14	56.1	0.0045	14
034969	Rock	1.77		0.162			1.800	3.21	0.91	7638.6	0.1738	13
034970	Rock	1.98		0.110			2.006	3.16	1.04	4994.4	0.1154	13
034971	Rock	3.02		0.016				0.11	1.14	62.2	0.0609	<10
034972	Rock	2.01		0.061				1.29	1.08	847.9	0.0433	<10
034973	Rock	1.02		0.039			1.803	52.33	0.47	291.6	0.0467	<10
034974	Rock	1.46						1.05	0.50	2.2	0.0011	<10
034975	Rock	1.15					1.740	25.90	0.38	21.0	<0.0005	<10
034976	Rock	0.99						29.79	0.45	6.4	<0.0005	<10
034977	Rock	1.66		0.083				3.64	0.36	657.0	0.0124	<10
034978	Rock	1.25						0.92	0.57	9.0	0.0037	<10
034979	Rock	1.49						3.38	0.23	232.4	0.0009	<10
034980	Rock	1.25		0.010			1.176	0.37	5.03	63.0	0.0095	18
034981	Rock	2.15		<0.005				0.48	5.05	80.4	0.0056	18

Please refer to the cover page for comments regarding this test report.



MSALABS
 Unit 1, 20120 102nd Avenue
 Langley, BC V1M 4B4
 Phone: +1-604-888-0875

To: **Go Cobalt Mining Corp.**
1100 Melville Street
Vancouver, BC, V6E 4A6
Canada

TEST REPORT:	YVR1910514
---------------------	-------------------

Project Name: Monster 2019
 Job Received Date: 29-Jul-2019
 Job Report Date: 26-Aug-2019
 Report Version: Final

	Sample Type	PWE-100 Rec. Wt. kg 0.01	Method Analyte Units LOR	FAS-111 Au ppm 0.005	ICF-6Cu Cu % 0.001	ICA-6Co Co % 0.001	ICA-6Cu Cu % 0.001	IMS-131 Ag ppm 0.01	IMS-131 Al % 0.01	IMS-131 As ppm 0.1	IMS-131 Au ppm 0.0005	IMS-131 B ppm 10
DUP 034777								5.32	1.47	6376.5	0.1338	20
DUP 034794								12.51	0.72	57.6	0.0799	<10
DUP 034775				0.009								
STD BLANK								<0.01	<0.01	<0.1	<0.0005	<10
STD BLANK								<0.01	<0.01	<0.1	<0.0005	<10
STD BLANK				<0.005								
STD BLANK						<0.001	<0.001					
STD BLANK					<0.001							
STD OREAS 24b								0.07	3.32	8.0	0.0021	12
STD OREAS 600								25.30	1.03	83.5	0.1976	<10
STD GBM310-6												
STD OxA131				0.076								
STD GBM917-4						1.157	6.055					
STD CCU-1e					22.900							

Please refer to the cover page for comments regarding this test report.



MSALABS
 Unit 1, 20120 102nd Avenue
 Langley, BC V1M 4B4
 Phone: +1-604-888-0875

To: **Go Cobalt Mining Corp.**
1100 Melville Street
Vancouver, BC, V6E 4A6
Canada

TEST REPORT:	YVR1910514
---------------------	-------------------

Project Name: Monster 2019
 Job Received Date: 29-Jul-2019
 Job Report Date: 26-Aug-2019
 Report Version: Final

	IMS-131 Ba ppm	IMS-131 Be ppm	IMS-131 Bi ppm	IMS-131 Ca %	IMS-131 Cd ppm	IMS-131 Ce ppm	IMS-131 Co ppm	IMS-131 Cr ppm	IMS-131 Cs ppm	IMS-131 Cu ppm	IMS-131 Fe %	IMS-131 Ga ppm
	10	0.05	0.01	0.01	0.01	0.02	0.1	1	0.05	0.2	0.01	0.05
Granite Blank	85	0.17	0.01	0.67	0.02	14.46	3.5	131	0.08	3.2	1.83	3.98
Granite Blank	93	0.13	0.01	0.70	0.02	15.16	4.2	122	0.09	5.6	1.95	4.24
034752	84	0.38	14.69	1.15	0.02	10.44	273.7	67	0.17	>10000	10.16	13.42
034753	73	0.08	3.22	0.28	0.03	15.06	92.2	191	0.14	>10000	8.41	12.86
034754	370	0.29	1.22	0.36	<0.01	9.22	70.8	148	1.41	>10000	10.46	14.55
034755	30	0.34	1.81	1.16	0.06	76.70	41.6	120	0.26	>10000	9.24	20.83
034756	56	0.48	0.37	4.01	<0.01	22.14	21.3	53	0.24	65.1	8.47	13.12
034757	62	0.35	0.13	0.15	0.05	38.75	2.6	44	0.24	>10000	2.48	1.58
034758	83	0.29	0.79	4.76	<0.01	9.11	21.2	101	0.08	4721.3	2.72	0.62
034759	369	0.66	0.09	4.11	<0.01	47.43	17.8	68	0.85	493.9	2.96	4.46
034760	119	0.34	0.82	2.64	<0.01	55.07	45.1	66	0.47	2452.4	3.24	6.20
034761	71	0.90	1.19	2.73	<0.01	70.68	16.5	59	1.20	1624.2	2.98	2.67
034762	57	1.12	3.11	2.85	<0.01	49.75	18.0	54	1.36	1617.2	3.78	2.47
034763	112	0.78	1.59	3.19	0.01	55.46	13.0	63	0.95	1404.5	3.47	2.60
034764	76	0.29	1.43	4.80	0.03	40.89	19.8	55	0.31	3870.9	3.35	2.22
034765	2644	0.67	0.59	5.61	0.09	29.40	96.0	49	0.75	3491.9	1.46	1.67
034766	128	0.37	9.48	1.09	0.02	5.16	26.6	116	0.36	2211.0	4.39	5.74
034767	70	0.58	0.36	1.31	0.02	90.63	71.7	42	1.23	>10000	7.52	14.54
034768	49	0.19	0.78	7.13	0.03	44.43	24.7	51	0.19	4233.9	2.99	1.66
034768PD	48	0.17	0.78	7.11	0.03	39.23	24.7	49	0.19	4378.3	2.98	1.62
034769	23	0.18	1.61	9.92	<0.01	7.69	>10000	31	0.51	30.0	4.52	3.85
034770	12	<0.05	8.37	4.58	0.13	3.33	35.2	124	0.07	2030.0	1.24	0.12
034771	49	0.19	1.41	6.13	0.08	264.45	2042.1	55	0.45	>10000	4.82	5.85
034772	161	0.20	0.26	7.11	0.02	8.81	2499.9	38	0.21	2677.6	2.48	1.40
034773	2565	0.19	0.07	15.88	0.06	20.25	26.4	15	0.10	436.0	3.84	1.30

Please refer to the cover page for comments regarding this test report.



MSALABS
 Unit 1, 20120 102nd Avenue
 Langley, BC V1M 4B4
 Phone: +1-604-888-0875

To: **Go Cobalt Mining Corp.**
1100 Melville Street
Vancouver, BC, V6E 4A6
Canada

TEST REPORT:	YVR1910514
---------------------	-------------------

Project Name: Monster 2019
 Job Received Date: 29-Jul-2019
 Job Report Date: 26-Aug-2019
 Report Version: Final

	IMS-131 Ba ppm	IMS-131 Be ppm	IMS-131 Bi ppm	IMS-131 Ca %	IMS-131 Cd ppm	IMS-131 Ce ppm	IMS-131 Co ppm	IMS-131 Cr ppm	IMS-131 Cs ppm	IMS-131 Cu ppm	IMS-131 Fe %	IMS-131 Ga ppm
	10	0.05	0.01	0.01	0.01	0.02	0.1	1	0.05	0.2	0.01	0.05
034774	18	0.09	3.54	6.93	0.09	9.19	54.0	44	0.14	>10000	14.29	0.88
034775	56	0.20	0.49	0.09	<0.01	8.46	57.8	125	0.44	128.6	5.78	6.37
034776	68	0.35	0.26	2.68	0.96	3.08	313.1	100	0.52	3224.6	4.96	7.61
034777	67	0.41	0.90	6.05	1.71	163.00	2872.2	73	6.77	4552.0	5.55	6.39
034778	37	0.19	2.61	10.88	1.76	21.83	5599.2	80	0.20	>10000	3.95	0.76
034779	660	0.15	1.54	0.87	0.02	422.99	27.0	174	0.36	>10000	6.32	9.89
034780	10	<0.05	0.02	15.20	<0.01	26.55	6.2	21	0.08	2498.5	2.61	0.28
034781	112	0.46	0.30	4.52	0.04	33.19	32.1	86	0.52	4836.2	2.47	2.89
034782	48	0.25	0.85	5.67	0.02	9.72	9.3	98	0.14	9908.1	2.68	1.23
034783	72	0.80	0.32	0.18	0.01	84.76	5.4	84	0.90	4117.3	1.55	3.66
034784	67	0.36	0.34	5.00	0.01	17.64	7.9	70	0.31	5188.8	1.90	3.08
034785	310	0.59	1.75	0.12	0.03	162.75	18.6	127	0.36	8966.3	1.98	6.57
034786	38	0.11	2.34	8.99	0.03	6.01	>10000	71	0.12	2189.3	3.08	1.10
034787	81	0.99	0.65	0.32	5.10	120.15	58.8	74	0.59	4405.1	5.69	10.78
034788	89	0.53	0.56	4.27	0.54	35.16	86.9	86	0.29	1720.7	3.58	5.60
034789	29	0.16	0.44	1.45	0.38	102.74	24.6	123	0.12	3162.2	1.20	2.22
034790	257	0.20	2.89	0.95	0.01	12.69	7872.8	83	0.13	7235.7	1.91	3.33
034791	115	0.28	1.17	4.29	0.01	54.04	1218.9	56	0.21	2120.2	2.55	3.98
034792	97	0.32	2.13	1.34	1.35	34.16	82.8	108	0.43	2396.5	3.27	4.06
034793	215	0.27	1.03	6.63	0.05	21.25	73.2	50	0.16	7473.8	2.93	1.55
034794	134	0.31	29.52	0.54	0.02	46.61	44.0	56	0.76	5447.3	2.03	3.39
034795	348	0.19	0.56	8.60	0.14	169.82	11.5	36	0.26	2272.5	4.21	6.30
034796	52	0.07	1.64	10.14	0.33	21.27	15.9	19	0.13	3758.7	2.01	0.50
034797	19	0.53	3.36	0.79	0.09	5.19	86.5	124	0.75	263.5	11.90	11.93
034798	113	0.73	1.01	1.64	0.03	19.97	70.4	77	1.23	>10000	10.02	18.38

Please refer to the cover page for comments regarding this test report.



MSALABS
 Unit 1, 20120 102nd Avenue
 Langley, BC V1M 4B4
 Phone: +1-604-888-0875

To: **Go Cobalt Mining Corp.**
1100 Melville Street
Vancouver, BC, V6E 4A6
Canada

TEST REPORT:	YVR1910514
---------------------	-------------------

Project Name: Monster 2019
 Job Received Date: 29-Jul-2019
 Job Report Date: 26-Aug-2019
 Report Version: Final

	IMS-131 Ba ppm	IMS-131 Be ppm	IMS-131 Bi ppm	IMS-131 Ca %	IMS-131 Cd ppm	IMS-131 Ce ppm	IMS-131 Co ppm	IMS-131 Cr ppm	IMS-131 Cs ppm	IMS-131 Cu ppm	IMS-131 Fe %	IMS-131 Ga ppm
	10	0.05	0.01	0.01	0.01	0.02	0.1	1	0.05	0.2	0.01	0.05
034799	147	0.71	2.93	0.05	0.01	23.56	2.6	49	0.71	5030.8	16.86	1.75
034800	29	0.08	0.84	3.11	0.56	17.70	195.3	72	0.29	4018.9	2.18	1.88
034801	2055	0.21	2.86	0.79	0.01	52.27	92.5	85	0.19	8749.1	12.08	26.72
034802	301	0.36	1.86	1.18	<0.01	39.93	376.2	118	0.49	4188.4	7.82	21.65
034803	244	0.48	4.95	2.37	0.04	32.13	44.6	77	1.00	>10000	7.29	13.01
034804	373	0.35	48.69	0.14	0.04	6.87	63.3	110	0.28	>10000	7.69	19.06
034805	1061	0.13	3.60	1.22	0.01	6.58	41.1	175	0.34	319.7	5.59	9.52
034806	120	0.29	1.27	1.38	0.03	39.87	141.7	78	0.55	>10000	15.33	17.67
034807	10	0.10	1.04	14.97	0.06	13.61	4.6	19	0.05	3970.5	1.99	0.41
034808	<10	<0.05	2.98	13.88	0.04	11.02	14.4	22	0.07	1212.4	1.66	0.24
034809	76	0.27	2.04	0.20	0.02	5.11	14.9	41	0.93	>10000	1.62	2.28
034810	60	0.88	1.11	0.19	0.01	39.09	29.2	230	6.82	5275.8	2.16	5.57
034951	12	<0.05	0.48	15.06	0.02	18.10	7.3	21	0.10	566.8	1.50	0.30
034952	62	0.74	0.11	2.00	<0.01	21.57	62.9	57	0.49	1209.3	9.67	15.75
034953	149	0.08	5.15	7.67	0.01	13.25	5303.0	31	0.10	4824.0	2.50	1.21
034954	47	0.17	0.66	3.98	0.05	5.47	75.6	30	0.20	>10000	5.59	1.26
034955	18	0.20	0.16	0.68	0.24	6.87	66.5	58	0.17	210.8	17.50	6.58
034956	569	0.22	0.22	1.28	<0.01	25.27	25.5	72	0.30	1970.0	4.28	13.31
034957	125	0.08	0.03	13.36	0.03	33.92	14.6	23	0.10	556.2	2.70	0.76
034958	402	0.05	0.23	3.81	0.01	3.15	30.2	95	0.12	1499.4	1.23	0.47
034959	22	0.07	2.27	8.70	0.65	5.99	68.3	37	0.06	>10000	11.91	0.86
034960	161	0.30	0.87	0.33	0.02	86.59	201.6	31	0.49	2680.3	8.24	19.50
034961	108	0.25	0.37	0.23	0.01	50.32	79.9	29	0.28	1583.4	9.61	23.18
034961PD	106	0.26	0.40	0.23	0.02	49.75	80.3	25	0.26	1491.1	9.56	22.33
034962	115	0.25	1.27	0.30	0.01	86.37	112.6	31	0.20	4133.9	11.74	27.63

Please refer to the cover page for comments regarding this test report.



MSALABS
 Unit 1, 20120 102nd Avenue
 Langley, BC V1M 4B4
 Phone: +1-604-888-0875

To: **Go Cobalt Mining Corp.**
1100 Melville Street
Vancouver, BC, V6E 4A6
Canada

TEST REPORT:	YVR1910514
---------------------	-------------------

Project Name: Monster 2019
 Job Received Date: 29-Jul-2019
 Job Report Date: 26-Aug-2019
 Report Version: Final

	IMS-131 Ba ppm	IMS-131 Be ppm	IMS-131 Bi ppm	IMS-131 Ca %	IMS-131 Cd ppm	IMS-131 Ce ppm	IMS-131 Co ppm	IMS-131 Cr ppm	IMS-131 Cs ppm	IMS-131 Cu ppm	IMS-131 Fe %	IMS-131 Ga ppm
	10	0.05	0.01	0.01	0.01	0.02	0.1	1	0.05	0.2	0.01	0.05
034963	73	0.38	1.79	0.33	0.02	61.52	161.4	22	0.38	3315.3	10.50	25.33
034964	137	0.31	1.54	0.28	0.02	60.98	155.4	25	0.29	5275.5	11.18	25.93
034965	140	0.39	0.32	1.78	<0.01	61.38	140.2	36	0.63	293.9	8.72	17.40
034966	115	0.38	0.32	1.68	<0.01	55.68	105.8	25	0.50	412.1	9.43	18.64
034967	142	0.30	1.40	0.86	0.01	40.86	1019.2	35	0.34	495.4	7.69	14.53
034968	120	0.32	0.80	1.90	0.02	89.83	44.6	82	0.17	3602.0	8.45	12.73
034969	206	0.17	3.64	6.45	0.04	31.29	4580.8	42	0.11	>10000	3.61	2.93
034970	213	0.17	2.58	4.64	0.02	32.05	2658.7	56	0.11	>10000	3.74	3.26
034971	156	0.27	0.56	5.16	0.01	73.61	111.9	40	0.19	3528.9	2.86	3.22
034972	444	0.24	1.41	3.39	0.02	10.63	775.6	53	0.28	8717.8	2.62	3.71
034973	297	0.12	0.32	0.46	0.29	3.04	387.9	62	0.28	>10000	0.93	1.90
034974	195	0.47	0.15	3.52	0.03	44.91	8.3	24	0.26	5995.5	1.67	1.58
034975	126	0.32	1.34	0.08	0.13	65.44	10.3	48	0.22	>10000	1.13	1.29
034976	83	0.41	1.95	0.08	0.03	148.56	2.0	35	0.27	6555.3	0.66	2.00
034977	39	0.43	1.45	3.85	0.78	10.09	161.7	29	0.17	2248.8	0.83	1.15
034978	85	0.42	0.36	2.47	1.30	81.58	20.5	30	0.25	565.3	0.95	2.11
034979	32	0.23	0.64	5.79	0.37	12.51	67.2	33	0.12	1978.1	1.18	0.73
034980	144	0.35	11.05	1.62	0.02	84.96	159.5	82	0.28	>10000	10.81	20.17
034981	121	0.37	2.46	0.63	<0.01	52.45	156.1	77	0.62	6906.3	9.69	17.25

Please refer to the cover page for comments regarding this test report.



MSALABS
 Unit 1, 20120 102nd Avenue
 Langley, BC V1M 4B4
 Phone: +1-604-888-0875

To: **Go Cobalt Mining Corp.**
1100 Melville Street
Vancouver, BC, V6E 4A6
Canada

TEST REPORT:	YVR1910514
---------------------	-------------------

Project Name: Monster 2019
 Job Received Date: 29-Jul-2019
 Job Report Date: 26-Aug-2019
 Report Version: Final

	IMS-131 Ba ppm	IMS-131 Be ppm	IMS-131 Bi ppm	IMS-131 Ca %	IMS-131 Cd ppm	IMS-131 Ce ppm	IMS-131 Co ppm	IMS-131 Cr ppm	IMS-131 Cs ppm	IMS-131 Cu ppm	IMS-131 Fe %	IMS-131 Ga ppm
	10	0.05	0.01	0.01	0.01	0.02	0.1	1	0.05	0.2	0.01	0.05
DUP 034777	68	0.41	0.90	6.09	1.68	160.02	3014.6	70	6.78	4601.0	5.66	6.33
DUP 034794	133	0.30	29.32	0.55	0.03	44.12	42.2	55	0.70	5464.7	2.02	3.29
DUP 034775												
STD BLANK	<10	<0.05	<0.01	<0.01	<0.01	<0.02	<0.1	<1	<0.05	<0.2	<0.01	<0.05
STD BLANK	<10	<0.05	<0.01	<0.01	<0.01	<0.02	<0.1	<1	<0.05	<0.2	<0.01	<0.05
STD BLANK												
STD BLANK												
STD OREAS 24b	153	1.56	0.75	0.47	0.05	63.44	14.8	111	9.82	36.5	4.07	11.51
STD OREAS 600	73	0.75	7.11	1.75	3.59	37.23	6.8	25	2.59	491.6	2.22	4.03
STD GBM310-6							484.6					
STD OxA131												
STD GBM917-4												
STD CCU-1e												

***Please refer to the cover page for comments regarding this test report. ***



MSALABS
 Unit 1, 20120 102nd Avenue
 Langley, BC V1M 4B4
 Phone: +1-604-888-0875

To: **Go Cobalt Mining Corp.**
1100 Melville Street
Vancouver, BC, V6E 4A6
Canada

TEST REPORT:	YVR1910514
---------------------	-------------------

Project Name: Monster 2019
 Job Received Date: 29-Jul-2019
 Job Report Date: 26-Aug-2019
 Report Version: Final

	IMS-131 Ge ppm 0.05	IMS-131 Hf ppm 0.02	IMS-131 Hg ppm 0.005	IMS-131 In ppm 0.005	IMS-131 K % 0.01	IMS-131 La ppm 0.2	IMS-131 Li ppm 0.1	IMS-131 Mg % 0.01	IMS-131 Mn ppm 5	IMS-131 Mo ppm 0.05	IMS-131 Na % 0.01	IMS-131 Nb ppm 0.05
Granite Blank	0.10	0.15	<0.005	0.008	0.14	5.9	1.8	0.47	503	1.55	0.13	0.32
Granite Blank	0.11	0.17	<0.005	0.009	0.14	6.2	1.6	0.57	570	1.62	0.14	0.33
034752	0.75	0.35	0.023	0.251	0.07	4.1	104.2	4.24	995	2.71	0.01	<0.05
034753	0.39	0.15	0.104	0.131	0.07	6.8	55.7	2.35	1317	1.17	0.02	<0.05
034754	0.13	0.33	0.029	0.086	0.18	4.1	103.8	4.14	772	1.48	0.06	<0.05
034755	0.58	0.25	0.078	0.120	0.06	32.8	61.1	4.32	1110	2.20	0.03	<0.05
034756	0.10	0.19	0.027	0.046	0.25	9.7	36.7	5.16	1849	25.41	0.01	<0.05
034757	0.11	0.22	0.034	0.030	0.22	17.9	5.4	0.20	186	11.09	0.01	<0.05
034758	<0.05	0.13	0.045	0.353	0.15	3.6	1.1	1.83	2802	1.26	0.02	<0.05
034759	0.07	0.35	0.007	0.049	0.55	21.2	40.0	3.19	2541	0.47	0.04	<0.05
034760	0.08	0.52	0.013	0.042	0.53	25.2	33.5	2.39	1032	0.74	0.02	<0.05
034761	0.08	0.45	0.007	0.036	0.61	34.7	4.6	1.41	1652	5.04	0.01	0.07
034762	0.07	0.43	0.011	0.048	0.57	23.7	4.3	1.28	2212	3.89	0.01	0.06
034763	0.07	0.51	0.009	0.046	0.59	28.9	4.4	1.35	2922	1.91	0.02	0.06
034764	0.06	0.39	0.122	0.078	0.42	18.7	4.0	2.44	2007	2.73	0.03	0.17
034765	<0.05	0.09	0.037	0.020	0.42	11.6	5.5	3.14	2369	0.49	<0.01	<0.05
034766	0.10	0.36	0.024	0.052	0.37	2.1	49.9	1.72	927	0.43	0.02	<0.05
034767	0.23	0.20	0.008	0.331	0.22	35.6	52.7	1.59	1075	0.54	0.07	<0.05
034768	0.07	0.31	0.016	0.202	0.23	18.7	4.0	3.53	3847	4.67	0.01	<0.05
034768PD	0.07	0.30	0.015	0.195	0.24	15.1	4.0	3.49	3833	4.41	0.01	<0.05
034769	0.11	0.17	0.019	0.045	0.25	3.0	15.5	5.29	5703	4.37	<0.01	<0.05
034770	<0.05	<0.02	0.094	0.053	0.01	1.2	0.4	2.48	2075	1.42	0.02	0.07
034771	0.38	0.24	0.073	0.500	0.19	125.2	23.8	4.07	2552	10.91	0.01	<0.05
034772	<0.05	0.29	0.016	0.108	0.31	3.6	1.8	3.47	3350	2.84	0.02	<0.05
034773	0.10	0.11	0.039	0.112	0.07	7.6	5.2	9.52	7457	0.80	<0.01	0.05

Please refer to the cover page for comments regarding this test report.



MSALABS
 Unit 1, 20120 102nd Avenue
 Langley, BC V1M 4B4
 Phone: +1-604-888-0875

To: **Go Cobalt Mining Corp.**
1100 Melville Street
Vancouver, BC, V6E 4A6
Canada

TEST REPORT:	YVR1910514
---------------------	-------------------

Project Name: Monster 2019
 Job Received Date: 29-Jul-2019
 Job Report Date: 26-Aug-2019
 Report Version: Final

	IMS-131 Ge ppm 0.05	IMS-131 Hf ppm 0.02	IMS-131 Hg ppm 0.005	IMS-131 In ppm 0.005	IMS-131 K % 0.01	IMS-131 La ppm 0.2	IMS-131 Li ppm 0.1	IMS-131 Mg % 0.01	IMS-131 Mn ppm 5	IMS-131 Mo ppm 0.05	IMS-131 Na % 0.01	IMS-131 Nb ppm 0.05
034774	0.14	0.30	1.324	0.096	0.08	3.5	3.2	3.90	3092	34.64	0.01	<0.05
034775	0.06	0.94	1.164	0.029	0.30	3.7	18.3	0.86	86	6.40	0.02	<0.05
034776	0.20	0.54	0.499	0.146	0.36	1.2	21.3	2.30	1491	1.51	0.02	<0.05
034777	0.89	0.13	0.497	0.401	1.12	77.9	19.9	3.96	3970	3.63	0.01	0.16
034778	0.13	0.05	0.098	1.926	0.08	8.5	2.7	6.28	3015	3.47	0.02	0.08
034779	0.84	0.14	0.014	0.174	0.07	200.5	83.2	3.11	1093	0.55	0.08	<0.05
034780	0.05	0.09	0.010	0.158	0.05	9.4	1.5	8.79	5131	0.18	0.03	<0.05
034781	0.05	0.23	0.017	0.083	0.51	13.4	16.5	2.84	1992	3.76	0.02	<0.05
034782	0.05	0.37	0.012	0.080	0.33	3.9	1.6	2.99	2154	1.25	0.02	<0.05
034783	0.09	0.32	0.013	0.026	0.57	38.3	7.1	0.35	103	0.56	0.02	<0.05
034784	<0.05	0.23	0.107	0.065	0.35	8.4	13.0	2.99	2448	0.82	0.03	0.05
034785	0.21	0.38	0.086	0.029	0.40	82.5	12.3	0.99	105	2.70	0.03	<0.05
034786	<0.05	0.18	0.097	0.153	0.19	2.4	2.0	4.56	3036	2.24	0.02	<0.05
034787	0.24	0.69	7.567	0.125	0.43	64.2	55.2	2.05	287	11.42	0.02	<0.05
034788	0.10	0.45	0.238	0.060	0.45	16.3	14.4	2.76	1834	1.82	0.02	0.06
034789	0.13	0.16	0.050	0.061	0.15	53.9	3.4	0.96	508	4.12	0.02	<0.05
034790	<0.05	0.33	0.173	0.214	0.21	5.6	10.3	1.02	596	4.15	0.03	<0.05
034791	0.08	0.34	0.050	0.087	0.27	27.6	11.8	2.92	2217	2.64	0.02	<0.05
034792	0.18	0.22	2.712	0.143	0.12	16.9	28.2	1.68	770	3.76	0.02	<0.05
034793	<0.05	0.26	0.085	0.143	0.24	9.6	4.9	3.55	4139	4.93	0.02	<0.05
034794	0.26	0.81	0.265	0.159	0.27	22.8	13.7	0.74	509	3.78	0.02	<0.05
034795	0.31	0.22	0.065	0.178	0.14	88.9	12.2	5.39	4020	1.50	0.03	<0.05
034796	0.06	0.13	0.061	0.366	0.08	8.6	0.6	5.52	3574	0.81	0.01	<0.05
034797	0.28	0.10	0.346	0.263	0.18	1.8	48.5	2.61	2023	1.45	0.02	<0.05
034798	0.13	0.38	0.052	0.052	0.28	8.8	66.8	3.28	1221	1.31	0.03	<0.05

Please refer to the cover page for comments regarding this test report.



MSALABS
 Unit 1, 20120 102nd Avenue
 Langley, BC V1M 4B4
 Phone: +1-604-888-0875

To: **Go Cobalt Mining Corp.**
1100 Melville Street
Vancouver, BC, V6E 4A6
Canada

TEST REPORT:	YVR1910514
---------------------	-------------------

Project Name: Monster 2019
 Job Received Date: 29-Jul-2019
 Job Report Date: 26-Aug-2019
 Report Version: Final

	IMS-131 Ge ppm 0.05	IMS-131 Hf ppm 0.02	IMS-131 Hg ppm 0.005	IMS-131 In ppm 0.005	IMS-131 K % 0.01	IMS-131 La ppm 0.2	IMS-131 Li ppm 0.1	IMS-131 Mg % 0.01	IMS-131 Mn ppm 5	IMS-131 Mo ppm 0.05	IMS-131 Na % 0.01	IMS-131 Nb ppm 0.05
034799	0.09	0.53	0.060	0.041	0.40	11.3	3.2	0.07	25	62.55	0.02	0.58
034800	0.08	0.15	0.132	0.095	0.10	8.6	10.5	1.84	2433	3.64	<0.01	<0.05
034801	0.51	0.19	0.015	0.106	0.05	28.2	92.0	3.87	3235	1.34	<0.01	<0.05
034802	0.18	0.42	0.016	0.080	0.21	22.4	77.0	3.13	1369	1.59	0.04	<0.05
034803	0.09	0.64	0.259	0.087	0.30	14.6	99.7	4.68	1349	75.46	0.02	<0.05
034804	0.20	0.60	0.020	0.047	0.12	3.3	167.9	4.58	1379	2.72	0.03	<0.05
034805	0.18	0.17	0.012	0.036	0.09	3.0	86.7	3.18	1538	1.05	<0.01	0.07
034806	0.17	0.46	0.094	0.085	0.21	21.9	75.5	3.37	1136	6.43	0.02	<0.05
034807	0.05	0.09	0.023	0.161	0.04	5.7	2.1	8.57	7804	1.21	0.02	<0.05
034808	<0.05	0.05	0.012	0.076	0.04	7.1	1.1	8.10	5960	2.02	0.01	<0.05
034809	<0.05	0.40	0.237	0.019	0.31	2.4	3.8	0.23	318	1.25	0.01	<0.05
034810	0.07	0.58	0.043	0.045	0.48	18.8	31.3	1.37	247	0.78	<0.01	<0.05
034951	<0.05	0.05	0.016	0.171	0.03	9.2	1.6	9.10	6354	1.01	0.02	<0.05
034952	0.37	0.04	0.014	0.086	0.08	10.0	63.5	4.15	867	0.98	0.06	<0.05
034953	0.05	0.15	0.028	0.404	0.07	6.1	8.0	4.32	2782	2.24	0.02	<0.05
034954	0.08	0.22	0.266	0.169	0.14	2.3	6.9	2.33	1373	2.98	0.06	<0.05
034955	0.08	0.58	0.384	0.016	0.22	3.3	14.0	1.11	901	3.96	<0.01	<0.05
034956	0.17	0.53	0.016	0.040	0.20	13.6	34.3	2.70	740	1.84	0.06	<0.05
034957	0.07	0.29	0.056	0.173	0.08	13.6	1.8	7.43	3549	1.24	0.03	<0.05
034958	<0.05	0.07	0.114	0.030	0.10	1.2	0.9	2.03	1230	3.38	0.04	<0.05
034959	0.19	0.08	0.397	0.574	0.04	2.3	4.4	4.64	3770	3.84	0.02	<0.05
034960	0.20	0.13	0.103	0.054	0.20	41.2	59.5	1.87	750	1.56	0.04	<0.05
034961	0.38	0.10	0.052	0.058	0.11	24.1	76.2	2.46	941	1.42	0.03	<0.05
034961PD	0.33	0.10	0.055	0.060	0.11	24.1	75.1	2.37	960	1.32	0.04	<0.05
034962	0.56	0.12	0.087	0.081	0.08	46.8	92.3	3.16	1301	1.99	0.02	<0.05

Please refer to the cover page for comments regarding this test report.



MSALABS
 Unit 1, 20120 102nd Avenue
 Langley, BC V1M 4B4
 Phone: +1-604-888-0875

To: **Go Cobalt Mining Corp.**
1100 Melville Street
Vancouver, BC, V6E 4A6
Canada

TEST REPORT:	YVR1910514
---------------------	-------------------

Project Name: Monster 2019
 Job Received Date: 29-Jul-2019
 Job Report Date: 26-Aug-2019
 Report Version: Final

	IMS-131 Ge ppm 0.05	IMS-131 Hf ppm 0.02	IMS-131 Hg ppm 0.005	IMS-131 In ppm 0.005	IMS-131 K % 0.01	IMS-131 La ppm 0.2	IMS-131 Li ppm 0.1	IMS-131 Mg % 0.01	IMS-131 Mn ppm 5	IMS-131 Mo ppm 0.05	IMS-131 Na % 0.01	IMS-131 Nb ppm 0.05
034963	0.46	0.13	0.120	0.093	0.10	29.6	90.5	2.83	1117	1.81	0.03	<0.05
034964	0.52	0.11	0.117	0.093	0.09	31.0	92.1	2.99	1261	2.20	0.03	<0.05
034965	0.17	0.12	0.009	0.120	0.20	28.1	57.1	2.42	1458	0.65	0.04	<0.05
034966	0.23	0.11	0.007	0.112	0.12	24.7	57.2	2.62	1529	0.74	0.05	<0.05
034967	0.21	0.17	0.015	0.085	0.16	17.6	41.3	1.68	1052	1.16	0.04	0.11
034968	0.23	0.56	0.045	0.095	0.18	43.2	57.9	2.53	1369	3.02	0.03	0.15
034969	0.07	0.23	0.062	0.492	0.16	13.2	12.5	4.27	3354	4.58	0.03	<0.05
034970	0.07	0.27	0.043	0.484	0.17	13.6	13.4	3.40	2465	5.63	0.03	<0.05
034971	0.06	0.53	0.019	0.136	0.30	34.2	15.0	3.34	2610	3.51	0.02	<0.05
034972	<0.05	0.49	0.041	0.116	0.34	4.5	12.8	2.37	2042	2.50	0.04	<0.05
034973	0.06	0.63	0.099	0.680	0.15	1.2	6.0	0.55	305	13.98	0.07	<0.05
034974	0.05	0.59	0.015	0.043	0.42	19.7	8.4	1.81	1680	0.83	0.02	<0.05
034975	0.10	0.21	0.020	0.257	0.23	32.5	1.8	0.10	202	3.34	0.01	<0.05
034976	0.15	0.30	0.017	0.092	0.31	71.7	2.0	0.07	24	2.87	<0.01	<0.05
034977	<0.05	0.23	0.101	0.124	0.28	4.0	1.6	2.12	1046	1.09	<0.01	<0.05
034978	0.08	0.17	0.036	0.095	0.27	32.8	5.9	1.50	646	0.80	0.01	<0.05
034979	<0.05	0.15	0.036	0.111	0.18	4.9	1.3	3.20	1740	1.32	0.01	<0.05
034980	0.40	0.23	0.056	0.148	0.08	37.7	143.5	5.70	1626	1.79	0.02	<0.05
034981	0.16	0.26	0.140	0.088	0.13	21.2	151.8	5.16	1419	0.85	0.02	<0.05

Please refer to the cover page for comments regarding this test report.



MSALABS
 Unit 1, 20120 102nd Avenue
 Langley, BC V1M 4B4
 Phone: +1-604-888-0875

To: **Go Cobalt Mining Corp.**
1100 Melville Street
Vancouver, BC, V6E 4A6
Canada

TEST REPORT:	YVR1910514
---------------------	-------------------

Project Name: Monster 2019
 Job Received Date: 29-Jul-2019
 Job Report Date: 26-Aug-2019
 Report Version: Final

	IMS-131 Ge ppm 0.05	IMS-131 Hf ppm 0.02	IMS-131 Hg ppm 0.005	IMS-131 In ppm 0.005	IMS-131 K % 0.01	IMS-131 La ppm 0.2	IMS-131 Li ppm 0.1	IMS-131 Mg % 0.01	IMS-131 Mn ppm 5	IMS-131 Mo ppm 0.05	IMS-131 Na % 0.01	IMS-131 Nb ppm 0.05
DUP 034777	0.99	0.12	0.488	0.407	1.12	76.2	19.5	4.02	4036	3.56	0.01	0.16
DUP 034794	0.27	0.82	0.272	0.159	0.26	21.2	13.5	0.73	508	3.78	0.02	<0.05
DUP 034775												
STD BLANK	<0.05	<0.02	<0.005	<0.005	<0.01	<0.2	<0.1	<0.01	<5	<0.05	<0.01	<0.05
STD BLANK	<0.05	<0.02	<0.005	<0.005	<0.01	<0.2	<0.1	<0.01	<5	<0.05	<0.01	<0.05
STD BLANK												
STD BLANK												
STD OREAS 24b	0.20	0.59	0.011	0.047	1.17	29.2	46.4	1.42	355	4.03	0.11	0.30
STD OREAS 600	0.09	0.21	0.287	0.788	0.21	18.5	6.5	0.35	686	2.07	0.05	0.07
STD GBM310-6												
STD OxA131												
STD GBM917-4												
STD CCU-1e												

Please refer to the cover page for comments regarding this test report.



MSALABS
 Unit 1, 20120 102nd Avenue
 Langley, BC V1M 4B4
 Phone: +1-604-888-0875

To: **Go Cobalt Mining Corp.**
1100 Melville Street
Vancouver, BC, V6E 4A6
Canada

TEST REPORT:	YVR1910514
---------------------	-------------------

Project Name: Monster 2019
 Job Received Date: 29-Jul-2019
 Job Report Date: 26-Aug-2019
 Report Version: Final

	IMS-131 Ni ppm	IMS-131 P ppm	IMS-131 Pb ppm	IMS-131 Rb ppm	IMS-131 Re ppm	IMS-131 S %	IMS-131 Sb ppm	IMS-131 Sc ppm	IMS-131 Se ppm	IMS-131 Sn ppm	IMS-131 Sr ppm	IMS-131 Ta ppm
	0.2	10	0.2	0.1	0.001	0.01	0.05	0.1	0.2	0.2	0.2	0.01
Granite Blank	3.4	414	1.2	3.7	<0.001	0.01	<0.05	2.6	<0.2	0.4	23.8	<0.01
Granite Blank	4.1	417	1.6	3.7	0.001	0.03	<0.05	3.3	<0.2	0.4	33.0	<0.01
034752	95.7	634	7.7	3.9	0.001	0.02	1.56	5.8	0.7	<0.2	4.3	<0.01
034753	50.1	585	4.2	1.9	<0.001	0.80	0.41	14.2	1.0	0.2	4.0	<0.01
034754	85.5	809	1.8	7.7	0.001	0.62	0.23	19.0	1.2	0.4	6.9	<0.01
034755	112.3	1891	2.7	2.6	0.005	0.17	0.28	14.7	31.8	0.3	4.6	<0.01
034756	53.9	545	1.1	12.0	0.066	0.16	0.20	5.8	0.9	1.0	16.8	<0.01
034757	6.6	362	2.2	9.2	<0.001	0.02	0.47	3.3	4.6	2.5	1.5	0.02
034758	11.2	257	0.9	5.8	0.001	0.38	0.11	1.6	0.8	<0.2	15.8	<0.01
034759	40.8	653	2.0	26.2	<0.001	0.01	0.21	3.7	<0.2	0.3	17.0	<0.01
034760	34.3	716	1.3	27.3	0.003	0.17	0.19	4.7	0.7	0.5	9.3	<0.01
034761	7.4	696	1.9	28.7	0.001	0.05	0.62	4.3	0.5	0.8	16.5	<0.01
034762	8.5	678	3.5	28.7	0.003	0.06	0.97	4.9	0.9	1.0	18.7	<0.01
034763	10.0	672	2.2	30.8	0.002	0.03	0.74	6.0	0.6	0.8	21.1	0.04
034764	6.3	562	3.2	18.8	0.003	0.33	0.29	5.3	0.3	0.5	19.7	0.01
034765	29.6	1033	16.0	20.0	0.002	0.08	1.16	3.0	<0.2	0.4	43.4	<0.01
034766	31.8	720	3.5	13.6	<0.001	0.01	0.44	3.3	0.2	0.2	4.1	<0.01
034767	23.7	1752	3.3	8.3	0.002	0.04	0.47	23.1	1.9	1.1	8.9	<0.01
034768	5.7	350	4.1	8.6	<0.001	0.32	0.29	3.6	0.4	<0.2	18.1	<0.01
034768PD	5.7	360	4.0	8.8	0.001	0.34	0.29	3.6	0.4	0.2	17.9	<0.01
034769	248.7	427	2.0	9.8	0.003	0.86	0.37	4.2	0.6	<0.2	21.6	<0.01
034770	8.4	15	292.2	0.5	<0.001	0.13	0.38	0.3	2.2	<0.2	13.4	<0.01
034771	106.2	228	7.8	8.3	0.003	1.51	0.91	7.9	1.2	0.3	14.4	<0.01
034772	103.0	448	2.9	10.5	0.001	0.13	0.53	4.3	0.3	<0.2	15.3	<0.01
034773	11.0	114	5.5	2.9	0.001	0.10	0.32	6.6	<0.2	0.2	148.8	<0.01

***Please refer to the cover page for comments
 regarding this test report. ***



MSALABS
 Unit 1, 20120 102nd Avenue
 Langley, BC V1M 4B4
 Phone: +1-604-888-0875

To: **Go Cobalt Mining Corp.**
1100 Melville Street
Vancouver, BC, V6E 4A6
Canada

TEST REPORT:	YVR1910514
---------------------	-------------------

Project Name: Monster 2019
 Job Received Date: 29-Jul-2019
 Job Report Date: 26-Aug-2019
 Report Version: Final

	IMS-131 Ni ppm 0.2	IMS-131 P ppm 10	IMS-131 Pb ppm 0.2	IMS-131 Rb ppm 0.1	IMS-131 Re ppm 0.001	IMS-131 S % 0.01	IMS-131 Sb ppm 0.05	IMS-131 Sc ppm 0.1	IMS-131 Se ppm 0.2	IMS-131 Sn ppm 0.2	IMS-131 Sr ppm 0.2	IMS-131 Ta ppm 0.01
034774	49.3	546	478.0	3.0	0.006	7.60	36.10	2.4	17.4	<0.2	14.3	<0.01
034775	21.3	408	35.5	11.3	<0.001	1.58	10.23	2.4	2.0	0.5	14.6	<0.01
034776	204.9	421	489.2	17.9	0.003	0.42	0.78	3.3	0.4	0.3	12.8	<0.01
034777	288.2	384	126.6	148.0	<0.001	0.85	1.23	5.5	1.7	0.4	19.6	<0.01
034778	137.1	36	67.2	5.5	0.006	2.07	0.93	5.2	4.5	0.7	22.7	<0.01
034779	60.4	102	2.7	2.3	<0.001	0.35	0.52	12.4	4.0	<0.2	7.4	<0.01
034780	4.2	422	1.2	1.6	0.003	0.27	0.07	1.5	<0.2	<0.2	38.9	0.01
034781	19.8	803	2.0	23.5	0.002	0.18	0.47	4.2	1.3	0.5	22.0	<0.01
034782	4.9	345	2.1	13.5	0.002	0.08	0.49	3.6	4.5	0.2	8.8	<0.01
034783	15.8	591	2.1	29.1	<0.001	0.03	0.41	2.0	0.6	0.4	2.8	<0.01
034784	9.2	687	1.3	19.0	0.002	0.33	0.36	4.0	<0.2	0.3	18.2	<0.01
034785	14.7	598	24.6	18.5	0.002	0.06	1.11	2.1	2.7	0.2	4.0	<0.01
034786	444.1	216	17.0	9.9	0.001	0.91	2.64	2.6	0.3	<0.2	25.6	<0.01
034787	48.9	746	789.7	19.8	0.003	0.35	0.75	2.9	0.9	0.3	3.6	<0.01
034788	45.0	255	93.1	21.1	0.001	0.16	0.82	3.2	0.6	0.2	12.1	<0.01
034789	17.0	204	22.5	6.3	0.002	0.17	5.49	1.3	0.8	<0.2	4.5	<0.01
034790	82.6	439	5.8	8.8	0.004	0.58	0.61	1.5	1.1	<0.2	3.3	<0.01
034791	39.7	456	3.8	11.6	0.003	0.33	0.19	3.7	0.3	<0.2	9.8	<0.01
034792	48.9	192	116.0	5.9	0.002	0.52	0.79	1.9	1.6	<0.2	4.8	<0.01
034793	16.8	308	4.1	10.8	0.003	0.83	0.51	2.0	1.5	<0.2	25.6	<0.01
034794	53.0	614	138.3	7.3	0.001	0.46	1.54	3.8	48.3	<0.2	4.8	<0.01
034795	12.9	431	22.9	6.3	0.002	0.03	0.27	6.2	7.9	<0.2	17.8	<0.01
034796	6.1	142	16.7	3.4	0.001	0.07	5.52	2.0	1.9	<0.2	13.0	0.03
034797	241.0	48	27.2	7.5	0.005	6.49	19.98	21.3	5.5	0.2	24.6	0.02
034798	96.1	698	4.2	14.9	0.009	1.33	0.39	14.7	4.9	0.5	11.3	<0.01

Please refer to the cover page for comments regarding this test report.



MSALABS
 Unit 1, 20120 102nd Avenue
 Langley, BC V1M 4B4
 Phone: +1-604-888-0875

To: **Go Cobalt Mining Corp.**
1100 Melville Street
Vancouver, BC, V6E 4A6
Canada

TEST REPORT:	YVR1910514
---------------------	-------------------

Project Name: Monster 2019
 Job Received Date: 29-Jul-2019
 Job Report Date: 26-Aug-2019
 Report Version: Final

	IMS-131 Ni ppm 0.2	IMS-131 P ppm 10	IMS-131 Pb ppm 0.2	IMS-131 Rb ppm 0.1	IMS-131 Re ppm 0.001	IMS-131 S % 0.01	IMS-131 Sb ppm 0.05	IMS-131 Sc ppm 0.1	IMS-131 Se ppm 0.2	IMS-131 Sn ppm 0.2	IMS-131 Sr ppm 0.2	IMS-131 Ta ppm 0.01
034799	3.0	459	14.3	18.9	0.038	0.09	12.48	2.6	0.6	1.4	8.8	<0.01
034800	32.6	144	116.7	3.2	0.003	0.30	0.51	2.7	0.4	<0.2	12.4	<0.01
034801	54.6	670	1.9	1.5	0.002	0.14	0.09	29.2	1.1	1.0	6.0	<0.01
034802	103.8	548	1.4	6.4	0.012	0.55	0.20	21.8	4.1	0.2	5.9	<0.01
034803	66.4	565	11.5	16.2	0.002	0.78	4.63	10.5	4.1	<0.2	11.2	<0.01
034804	72.4	567	5.4	5.2	0.002	0.07	0.39	13.4	1.6	0.3	5.1	<0.01
034805	80.0	423	3.5	3.5	<0.001	0.07	1.19	6.8	0.2	0.2	117.3	<0.01
034806	58.9	828	3.6	10.2	0.002	1.04	0.27	19.3	2.0	0.9	7.6	<0.01
034807	2.2	2210	7.3	1.4	0.008	0.14	17.80	1.2	0.3	<0.2	38.0	<0.01
034808	7.8	141	4.4	1.4	0.005	0.08	1.96	1.5	<0.2	<0.2	31.0	<0.01
034809	45.0	672	5.6	9.0	0.001	<0.01	0.92	2.2	0.3	0.5	2.0	<0.01
034810	57.2	621	5.4	18.3	0.001	0.01	1.01	10.5	0.8	0.3	2.6	<0.01
034951	2.7	250	3.1	1.3	0.001	0.04	0.66	0.5	<0.2	<0.2	22.3	<0.01
034952	50.1	587	1.3	3.8	0.002	0.10	0.15	30.6	0.4	0.6	11.8	<0.01
034953	34.5	306	2.4	3.2	0.004	0.15	0.72	2.8	0.6	<0.2	26.0	0.01
034954	20.5	645	0.9	4.6	0.001	3.03	0.22	10.0	10.6	0.5	5.7	<0.01
034955	54.9	410	176.8	11.5	0.006	>10	13.45	3.3	0.4	0.5	2.9	<0.01
034956	36.7	539	2.5	6.6	0.006	0.16	0.23	3.5	3.4	0.7	13.5	<0.01
034957	8.7	741	13.3	3.2	0.002	0.14	2.42	5.0	<0.2	<0.2	26.9	<0.01
034958	9.7	195	0.9	4.7	0.002	0.12	0.17	1.2	<0.2	<0.2	13.1	<0.01
034959	64.7	137	643.0	1.7	0.002	5.17	1.47	4.6	25.2	0.4	25.1	<0.01
034960	50.5	1318	4.9	10.7	0.002	0.10	0.23	8.2	0.9	0.5	5.6	<0.01
034961	45.5	1018	1.7	4.4	<0.001	0.05	0.15	10.2	0.8	0.3	4.1	<0.01
034961PD	48.9	1075	1.6	4.1	<0.001	0.04	0.13	10.4	1.0	0.4	3.6	<0.01
034962	93.1	1026	1.6	3.3	0.001	0.21	0.30	15.9	0.6	0.6	4.1	<0.01

Please refer to the cover page for comments regarding this test report.



MSALABS
 Unit 1, 20120 102nd Avenue
 Langley, BC V1M 4B4
 Phone: +1-604-888-0875

To: **Go Cobalt Mining Corp.**
1100 Melville Street
Vancouver, BC, V6E 4A6
Canada

TEST REPORT:	YVR1910514
---------------------	-------------------

Project Name: Monster 2019
 Job Received Date: 29-Jul-2019
 Job Report Date: 26-Aug-2019
 Report Version: Final

	IMS-131 Ni ppm 0.2	IMS-131 P ppm 10	IMS-131 Pb ppm 0.2	IMS-131 Rb ppm 0.1	IMS-131 Re ppm 0.001	IMS-131 S % 0.01	IMS-131 Sb ppm 0.05	IMS-131 Sc ppm 0.1	IMS-131 Se ppm 0.2	IMS-131 Sn ppm 0.2	IMS-131 Sr ppm 0.2	IMS-131 Ta ppm 0.01
034963	67.9	1222	2.0	4.0	0.001	0.17	0.24	15.9	0.7	0.8	4.5	<0.01
034964	74.0	1093	1.8	3.7	0.002	0.25	0.27	16.8	0.7	0.5	4.1	<0.01
034965	48.0	978	2.3	12.0	0.002	0.03	0.44	26.2	0.2	0.7	8.8	<0.01
034966	39.0	1015	2.3	5.3	0.002	0.04	0.46	24.4	0.3	0.8	8.7	<0.01
034967	97.5	954	2.9	6.6	0.002	0.10	0.61	13.6	0.6	0.8	5.5	<0.01
034968	48.8	759	2.0	6.5	0.001	0.06	0.27	11.0	0.2	0.9	6.0	0.04
034969	159.4	236	6.5	6.7	0.003	1.11	0.61	2.3	0.8	<0.2	10.9	0.01
034970	112.4	257	5.1	7.1	0.002	1.03	0.38	1.9	0.6	0.2	9.0	<0.01
034971	46.5	585	1.2	12.7	0.001	0.50	0.14	2.7	0.5	0.2	10.7	<0.01
034972	43.8	547	4.4	14.4	0.002	0.32	0.46	4.4	1.0	0.3	12.1	<0.01
034973	30.4	380	32.9	7.3	0.012	0.63	128.59	2.0	2.3	<0.2	8.2	<0.01
034974	4.8	990	2.3	19.9	0.001	0.14	0.87	1.8	0.3	0.3	29.6	<0.01
034975	5.7	427	18.2	9.6	0.002	0.03	2.14	1.7	8.4	0.3	1.9	<0.01
034976	3.4	560	19.5	13.5	0.002	0.02	0.24	1.4	4.3	0.3	2.3	<0.01
034977	18.8	448	36.7	12.0	<0.001	0.09	0.36	1.6	1.2	0.3	9.5	<0.01
034978	10.9	440	31.7	11.6	<0.001	0.01	0.13	1.9	<0.2	0.2	8.6	<0.01
034979	9.2	427	10.2	7.9	0.001	0.06	0.29	4.0	0.3	<0.2	9.8	<0.01
034980	48.5	418	3.7	3.8	0.003	0.84	0.17	18.6	1.8	0.4	5.9	<0.01
034981	48.4	433	2.9	6.5	0.002	0.56	0.21	11.7	0.3	0.3	4.0	<0.01

Please refer to the cover page for comments regarding this test report.



MSALABS
 Unit 1, 20120 102nd Avenue
 Langley, BC V1M 4B4
 Phone: +1-604-888-0875

To: **Go Cobalt Mining Corp.**
1100 Melville Street
Vancouver, BC, V6E 4A6
Canada

TEST REPORT:	YVR1910514
---------------------	-------------------

Project Name: Monster 2019
 Job Received Date: 29-Jul-2019
 Job Report Date: 26-Aug-2019
 Report Version: Final

	IMS-131 Ni ppm 0.2	IMS-131 P ppm 10	IMS-131 Pb ppm 0.2	IMS-131 Rb ppm 0.1	IMS-131 Re ppm 0.001	IMS-131 S % 0.01	IMS-131 Sb ppm 0.05	IMS-131 Sc ppm 0.1	IMS-131 Se ppm 0.2	IMS-131 Sn ppm 0.2	IMS-131 Sr ppm 0.2	IMS-131 Ta ppm 0.01
DUP 034777	290.9	392	127.7	146.9	<0.001	0.87	1.24	5.5	1.6	0.5	19.7	<0.01
DUP 034794	52.3	604	136.4	6.9	0.001	0.46	1.58	3.7	49.4	<0.2	4.7	<0.01
DUP 034775												
STD BLANK	<0.2	<10	<0.2	<0.1	<0.001	<0.01	<0.05	<0.1	<0.2	<0.2	<0.2	<0.01
STD BLANK	<0.2	<10	<0.2	<0.1	<0.001	<0.01	<0.05	<0.1	<0.2	<0.2	<0.2	<0.01
STD BLANK												
STD BLANK												
STD OREAS 24b	58.3	640	9.5	123.2	0.001	0.21	0.58	10.1	<0.2	2.3	31.4	<0.01
STD OREAS 600	15.1	503	152.2	9.4	<0.001	1.76	8.43	1.9	7.0	1.1	37.2	<0.01
STD GBM310-6												
STD OxA131												
STD GBM917-4												
STD CCU-1e												

Please refer to the cover page for comments regarding this test report.



MSALABS
 Unit 1, 20120 102nd Avenue
 Langley, BC V1M 4B4
 Phone: +1-604-888-0875

To: **Go Cobalt Mining Corp.**
1100 Melville Street
Vancouver, BC, V6E 4A6
Canada

TEST REPORT:	YVR1910514
---------------------	-------------------

Project Name: Monster 2019
 Job Received Date: 29-Jul-2019
 Job Report Date: 26-Aug-2019
 Report Version: Final

	IMS-131 Te ppm 0.01	IMS-131 Th ppm 0.2	IMS-131 Ti % 0.005	IMS-131 Tl ppm 0.02	IMS-131 U ppm 0.05	IMS-131 V ppm 1	IMS-131 W ppm 0.05	IMS-131 Y ppm 0.05	IMS-131 Zn ppm 1	IMS-131 Zr ppm 0.5
Granite Blank	<0.01	2.2	0.089	<0.02	0.52	24	0.08	9.31	28	4.7
Granite Blank	<0.01	2.2	0.101	<0.02	0.52	29	0.09	9.85	32	5.2
034752	0.23	3.9	0.008	0.14	4.04	110	<0.05	7.22	46	16.9
034753	0.03	1.5	0.009	<0.02	1.87	216	<0.05	4.58	54	7.0
034754	0.05	1.8	0.036	0.03	1.18	242	0.14	6.09	38	16.8
034755	0.32	15.2	0.006	<0.02	6.41	199	<0.05	12.77	26	12.9
034756	0.11	12.7	0.007	0.03	5.95	41	0.74	6.09	24	8.9
034757	0.06	6.4	<0.005	0.13	129.13	18	0.21	6.86	3	10.6
034758	0.07	2.0	<0.005	<0.02	1.48	6	<0.05	10.64	2	6.4
034759	<0.01	6.9	0.007	0.11	1.21	17	<0.05	11.88	33	18.6
034760	0.03	11.2	0.010	0.07	2.05	39	0.07	10.51	22	26.4
034761	0.08	10.3	0.013	0.10	4.09	31	0.49	12.03	5	23.3
034762	0.11	8.7	0.018	0.09	3.18	32	0.74	12.34	5	23.4
034763	0.05	6.9	0.014	0.08	2.96	45	0.33	12.00	6	25.5
034764	0.06	7.8	0.020	0.06	1.36	31	0.22	13.26	12	17.5
034765	<0.01	14.7	<0.005	0.12	23.73	13	0.05	18.72	36	17.2
034766	0.11	4.8	<0.005	0.11	3.13	57	<0.05	8.24	18	20.1
034767	<0.01	5.7	0.025	0.03	1.39	225	<0.05	27.41	60	10.1
034768	0.04	4.5	<0.005	0.04	2.22	15	<0.05	10.99	10	13.5
034768PD	0.07	4.4	<0.005	0.04	2.19	14	<0.05	10.66	9	13.4
034769	0.49	4.2	<0.005	0.03	3.88	20	<0.05	12.53	15	8.2
034770	<0.01	0.3	<0.005	<0.02	3.00	4	<0.05	3.09	67	0.8
034771	0.47	9.4	0.006	0.15	4.18	28	<0.05	10.84	46	13.5
034772	0.39	5.0	<0.005	0.03	3.54	16	<0.05	8.92	8	14.3
034773	0.01	2.5	0.005	<0.02	0.72	30	0.22	20.23	31	5.6

Please refer to the cover page for comments regarding this test report.



MSALABS
 Unit 1, 20120 102nd Avenue
 Langley, BC V1M 4B4
 Phone: +1-604-888-0875

To: **Go Cobalt Mining Corp.**
1100 Melville Street
Vancouver, BC, V6E 4A6
Canada

TEST REPORT:	YVR1910514
---------------------	-------------------

Project Name: Monster 2019
 Job Received Date: 29-Jul-2019
 Job Report Date: 26-Aug-2019
 Report Version: Final

	IMS-131 Te ppm 0.01	IMS-131 Th ppm 0.2	IMS-131 Ti % 0.005	IMS-131 Tl ppm 0.02	IMS-131 U ppm 0.05	IMS-131 V ppm 1	IMS-131 W ppm 0.05	IMS-131 Y ppm 0.05	IMS-131 Zn ppm 1	IMS-131 Zr ppm 0.5
034774	0.03	1.9	<0.005	0.31	32.92	22	<0.05	13.23	15	24.6
034775	0.05	6.1	<0.005	2.57	5.07	31	<0.05	3.11	11	43.9
034776	0.03	5.1	0.010	0.06	7.14	36	<0.05	4.48	518	24.1
034777	0.33	4.2	0.090	0.47	0.88	35	0.32	13.36	689	5.3
034778	0.26	0.8	<0.005	0.02	0.85	20	0.05	41.42	134	2.2
034779	0.02	0.7	0.005	<0.02	0.93	112	<0.05	5.01	25	6.0
034780	0.02	1.1	<0.005	<0.02	0.68	5	<0.05	39.00	7	3.4
034781	0.07	10.8	<0.005	0.23	6.71	16	<0.05	13.70	19	25.1
034782	0.13	3.8	<0.005	0.03	5.79	11	0.07	9.73	5	19.3
034783	0.01	6.6	<0.005	0.09	2.24	13	<0.05	4.89	7	16.7
034784	0.02	8.1	<0.005	0.04	3.03	13	0.05	10.34	5	12.2
034785	0.25	8.0	0.005	0.04	3.74	33	0.07	6.44	22	23.9
034786	0.36	2.5	<0.005	<0.02	10.58	8	0.06	12.51	4	9.2
034787	0.11	10.4	0.013	0.06	5.01	62	0.09	6.57	3882	37.2
034788	0.06	6.1	0.010	0.05	6.06	21	0.12	10.34	280	25.0
034789	0.17	2.3	<0.005	<0.02	0.82	10	1.52	4.13	108	8.4
034790	0.10	4.3	<0.005	0.03	2.95	20	0.98	6.16	17	16.7
034791	0.08	6.2	<0.005	0.03	1.07	24	0.61	17.27	17	19.2
034792	0.11	2.3	0.006	0.03	1.63	20	1.16	5.16	526	11.2
034793	0.17	3.3	<0.005	0.04	1.46	10	0.60	10.78	16	13.5
034794	0.34	10.5	<0.005	0.10	3.67	40	0.56	5.37	25	38.0
034795	0.06	5.8	<0.005	0.02	2.36	35	0.28	16.70	36	13.5
034796	0.01	1.9	<0.005	<0.02	1.43	10	0.24	12.88	47	5.9
034797	0.89	0.6	0.011	0.09	0.14	164	0.26	5.36	116	4.2
034798	0.06	2.0	0.006	0.07	4.24	225	0.15	10.49	106	21.4

Please refer to the cover page for comments regarding this test report.



MSALABS
 Unit 1, 20120 102nd Avenue
 Langley, BC V1M 4B4
 Phone: +1-604-888-0875

To: **Go Cobalt Mining Corp.**
1100 Melville Street
Vancouver, BC, V6E 4A6
Canada

TEST REPORT:	YVR1910514
---------------------	-------------------

Project Name: Monster 2019
 Job Received Date: 29-Jul-2019
 Job Report Date: 26-Aug-2019
 Report Version: Final

	IMS-131 Te ppm 0.01	IMS-131 Th ppm 0.2	IMS-131 Ti % 0.005	IMS-131 Tl ppm 0.02	IMS-131 U ppm 0.05	IMS-131 V ppm 1	IMS-131 W ppm 0.05	IMS-131 Y ppm 0.05	IMS-131 Zn ppm 1	IMS-131 Zr ppm 0.5
034799	0.23	8.2	0.097	0.07	12.99	34	2.49	7.61	4	28.7
034800	0.13	1.6	<0.005	0.02	2.57	16	0.77	5.77	221	7.8
034801	<0.01	2.4	0.010	<0.02	5.12	215	0.27	7.38	109	12.4
034802	0.05	3.5	0.012	0.03	1.34	221	0.18	7.69	76	21.6
034803	0.08	7.0	0.005	0.09	12.69	79	0.15	12.29	55	37.3
034804	0.03	5.9	<0.005	0.02	12.12	109	0.20	5.20	115	33.6
034805	0.02	0.3	0.283	<0.02	0.14	130	0.20	6.41	101	6.2
034806	0.02	2.4	0.040	0.04	1.69	275	1.25	5.55	32	26.4
034807	<0.01	0.7	<0.005	<0.02	1.20	10	0.25	6.80	12	4.0
034808	0.03	0.8	<0.005	0.03	1.14	15	0.30	5.58	13	2.6
034809	0.02	13.4	<0.005	0.05	6.71	22	0.32	4.20	6	19.9
034810	<0.01	3.6	<0.005	0.09	26.71	82	0.10	6.95	46	37.5
034951	0.03	0.5	<0.005	<0.02	1.39	5	0.29	6.78	6	2.5
034952	<0.01	1.1	0.024	<0.02	0.12	301	0.13	10.38	52	1.1
034953	0.05	1.7	<0.005	0.02	2.47	12	0.38	10.88	8	6.9
034954	0.17	2.9	<0.005	<0.02	0.86	49	0.22	9.08	10	11.1
034955	0.04	4.8	<0.005	3.45	1.98	29	0.45	3.57	107	32.1
034956	0.01	8.9	0.009	0.02	2.81	51	0.38	4.95	16	22.8
034957	0.01	4.0	<0.005	<0.02	1.40	18	0.26	24.15	11	13.7
034958	0.10	1.6	0.006	<0.02	0.80	7	1.12	11.15	3	3.4
034959	0.01	0.7	<0.005	0.35	21.69	16	0.56	9.93	383	4.0
034960	0.04	3.6	0.015	0.04	0.50	279	0.19	9.52	74	6.5
034961	0.03	3.0	0.013	<0.02	0.48	288	0.15	6.73	85	5.2
034961PD	0.03	3.7	0.012	<0.02	0.50	288	0.17	6.83	84	5.3
034962	0.02	2.6	0.012	<0.02	0.38	299	0.36	7.23	72	6.0

Please refer to the cover page for comments regarding this test report.



MSALABS
 Unit 1, 20120 102nd Avenue
 Langley, BC V1M 4B4
 Phone: +1-604-888-0875

To: **Go Cobalt Mining Corp.**
1100 Melville Street
Vancouver, BC, V6E 4A6
Canada

TEST REPORT:	YVR1910514
---------------------	-------------------

Project Name: Monster 2019
 Job Received Date: 29-Jul-2019
 Job Report Date: 26-Aug-2019
 Report Version: Final

	IMS-131 Te ppm 0.01	IMS-131 Th ppm 0.2	IMS-131 Ti % 0.005	IMS-131 Tl ppm 0.02	IMS-131 U ppm 0.05	IMS-131 V ppm 1	IMS-131 W ppm 0.05	IMS-131 Y ppm 0.05	IMS-131 Zn ppm 1	IMS-131 Zr ppm 0.5
034963	<0.01	3.0	0.010	<0.02	0.44	306	0.37	8.62	88	6.3
034964	0.01	2.6	0.011	<0.02	0.35	304	0.27	7.70	78	5.6
034965	0.02	3.2	0.038	0.04	0.43	352	0.09	17.43	77	5.1
034966	0.01	3.1	0.052	0.02	0.51	359	0.10	20.64	87	5.0
034967	0.02	5.9	0.043	0.02	0.88	243	0.25	16.60	56	8.1
034968	0.12	10.5	0.066	0.02	2.90	138	1.06	12.55	38	25.3
034969	0.12	2.2	<0.005	0.02	1.21	16	0.51	28.82	11	10.0
034970	0.02	2.8	<0.005	<0.02	1.42	19	0.67	24.41	11	11.4
034971	0.12	7.3	<0.005	0.04	2.69	20	0.50	21.20	16	22.7
034972	0.08	7.4	<0.005	0.08	1.84	24	0.40	12.10	19	22.5
034973	0.32	8.5	<0.005	0.02	2.70	32	0.50	4.26	38	28.9
034974	0.01	11.7	<0.005	0.09	4.58	8	0.25	12.20	5	29.2
034975	0.03	4.2	<0.005	0.03	1.29	25	0.59	3.25	19	9.9
034976	0.03	7.2	<0.005	0.03	1.85	19	0.41	4.00	10	15.9
034977	0.28	2.6	<0.005	0.02	2.08	19	0.43	7.19	103	11.0
034978	0.04	5.5	<0.005	0.03	1.07	20	0.31	3.91	178	7.9
034979	0.07	2.9	<0.005	<0.02	0.98	12	0.50	12.64	46	6.8
034980	0.05	2.4	0.010	<0.02	2.09	201	0.20	13.63	62	11.3
034981	<0.01	7.0	0.006	0.03	0.72	115	0.18	9.03	66	10.5

Please refer to the cover page for comments regarding this test report.



MSALABS
 Unit 1, 20120 102nd Avenue
 Langley, BC V1M 4B4
 Phone: +1-604-888-0875

To: **Go Cobalt Mining Corp.**
1100 Melville Street
Vancouver, BC, V6E 4A6
Canada

TEST REPORT:	YVR1910514
---------------------	-------------------

Project Name: Monster 2019
 Job Received Date: 29-Jul-2019
 Job Report Date: 26-Aug-2019
 Report Version: Final

	IMS-131 Te ppm 0.01	IMS-131 Th ppm 0.2	IMS-131 Ti % 0.005	IMS-131 Tl ppm 0.02	IMS-131 U ppm 0.05	IMS-131 V ppm 1	IMS-131 W ppm 0.05	IMS-131 Y ppm 0.05	IMS-131 Zn ppm 1	IMS-131 Zr ppm 0.5
DUP 034777	0.32	4.1	0.090	0.47	0.86	33	0.31	13.23	696	5.1
DUP 034794	0.36	10.3	<0.005	0.10	3.57	39	0.58	5.31	25	37.4
DUP 034775										
STD BLANK	<0.01	<0.2	<0.005	<0.02	<0.05	<1	<0.05	<0.05	<1	<0.5
STD BLANK	<0.01	<0.2	<0.005	<0.02	<0.05	<1	<0.05	<0.05	<1	<0.5
STD BLANK										
STD BLANK										
STD OREAS 24b	0.02	14.6	0.212	0.67	1.83	84	1.28	11.58	96	26.3
STD OREAS 600	7.44	5.2	<0.005	0.59	1.11	13	0.57	6.05	607	9.4
STD GBM310-6										
STD OxA131										
STD GBM917-4										
STD CCU-1e										

Please refer to the cover page for comments regarding this test report.

Costs Monster 1 - 304 Field Program 2019

Contractor	Details	Rate	cost	date	Survey type	Total
Fireweed	Helicopter access		\$70,403.42	July	Travel	
Great River air	Fixed wing access		\$15,145.20	July	Travel	
Aero logistics	Jet fuel		\$992.04		Travel	
Reynolds outfitting Ltd.	Fixed wing access		\$525.00	June	Travel	\$87,065.66
Groundtruth exploration	Rock Geophysical Properties Analysis	\$50/sample	\$1,470.00	September 1 - 30th	Rock geophysics	\$1,470.00
GT Exploration	Forward modeling		\$5,850.00	June	Resistivity/IP	
GT Exploration	Resistivity/IP survey	\$3,750/day	\$34,850.00	July	Resistivity/IP	\$40,700.00
Rodrigo Diaz	Remote sensing		\$10,050.00	April 1st - May 30th	Remote sensing	\$10,050.00
GT Exploration	Drone photogrammetry		\$5,050.00	July	Photogrammetry	\$5,050.00
Allin Exploration	Geological assistant	375/day	\$7,875.00	June - July	Mapping	
Hicest Media Ltd.	Preparatory and on-site	\$500/day,	\$19,000.00	April - August	Mapping	
Caveman	Office geological	\$25/hour	\$1,177.25	August	Mapping	
Caveman	Field geological consulting	\$325/day	\$6,944.70	July	Mapping	
Luke Bickerton	On-site and office	\$400/day,	\$8,798.26	July - September	Mapping	\$43,795.21
MWH	Gravity surveying		\$48,300.00	August 20 -30th	Gravity	
Southern	Processing and inversion		\$14,492.00	February - September	Gravity	\$62,792.00
MS Analytical	chemistry	91 samples	\$3,656.32	August	Chemical analysis	\$3,656.32
Allin Exploration	Camp rental / setup		\$22,319.42		Camp	
GT Exploration	Camp cook		\$11,550.00	July	Camp	
GT Exploration	Expenditures (food)		\$9,163.13	July	Camp	\$43,032.55
Total			\$297,611.74			

Statement of work.

Go Metals commissioned a remote sensing lineament analysis survey over the entire property and surrounding district. The remote sensing survey included the analyses of new arcticDEM satellite data (contractor Rodrigo Diaz).

Go Metals commissioned a resistivity and drone survey by Groundtruth exploration. Alteration mapping was done