

ASSESSMENT REPORT ON THE 2018 GEOCHEMICAL SURVEY OF THE AU CLAIMS

DAWSON MINING DISTRICT – NTS 1150/ 13 AND 14

Latitude 63° 52' 30" N, Longitude 139° 25 ' W

UTM NAD 83 ZONE 7: 578500E, 7085000N

Claim name	Certificate no.
AU 136–186	YF41306 –YF41356
AU 187–284	YF59877 – YF59974

FIELDWORK CONDUCTED FROM OCTOBER 2 TO 6, 2018

REPORT BY DANIÈLE HÉON, P. GEO.

WHITEHORSE, JUNE 18 2019

TABLE OF CONTENTS

SUMMARY.....	1
CLAIM DATA.....	1
LOCATION AND ACCESS	1
REGIONAL DATA	3
Regional Geology.....	3
Regional Geochemistry.....	5
Regional Geophysics.....	5
MINERALIZATION	6
PREVIOUS WORK	7
2018 SOIL SURVEY	7
Description of work	7
Methodology	7
2018 Results	10
CONCLUSIONS AND RECOMMENDATIONS.....	11
STATEMENT OF QUALIFICATIONS	12
REFERENCES	13

LIST OF FIGURES

Figure 1: General Location Map – AU claims.....	2
Figure 2 A- Regional Geology- Minfile	4
Figure 3- RGS DATA for Au (ppb)	5
Figure 4- Regional First Derivative Mag.....	6
Figure 5: Location map of the different soil grids by year	8
Figure 6: Location of 2018 soil grid with respect to 2017 gold anomalies and historical grid	9

LIST OF APPENDICES

Appendix A- Claim Map	14
Appendix B- Claim Data	15
Appendix C- Soil Sample Location Data	16
Appendix D- Soil Geochemistry	1
Appendix E- Statement of Expenditures.....	2
Appendix F- Assay Certificates.....	3

SUMMARY

The AU property consists of 222 quartz claims located on NTS map sheet 1150/13 and 14 and registered in the Dawson Mining District. A soil geochemical survey was conducted on October 2 and October 4, 2018, with demobilization to Whitehorse on October 6, 2018, for a total of 19 person-days. A total of 227 soil samples were analyzed for gold and multi-element ICP.

The property is located in the heart of the Klondike district, and is drained to the east by Bonanza and Eldorado creeks, which have produced placer gold from the early days of the Klondike to the present. Recent regional mapping shows the property to overlie the Permian Sulphur Creek Orthogneiss at its northeastern contact with the Permian Klondike Schist.

In 2018, 98 claims were added at the northern end of the claims block. A survey was conducted spanning an area where three consecutive samples from the 2013 and 2017 surveys, spaced 50 m apart, returned values of 508, 120 ppb Au, and 25 ppb Au, respectively, and where another sample, 1.5 km to the south, assayed 78 ppb Au. A total of 227 soil samples were analyzed. The 2018 results are displayed in geochemical maps found in Appendix D. The previous anomalous results were not duplicated. However, a new anomaly (64 ppb Au, 116 ppm Pb) was defined at the northeastern edge of the grid.

The author was not involved in the fieldwork. This report documents and interprets the results of the 2018 sampling, based on information supplied by Coureur des Bois Ltée Ltd; it integrates the results of this survey with those of earlier surveys.

CLAIM DATA

The AU property consists of 222 contiguous mineral claims registered in the Dawson Mining District. The claims are held by Coureur des Bois Ltée Ltd. The summary claim data is as follows:

AU 136–186	YF41306 –YF41356
AU 187–284	YF59877 – YF59974

The claims have a renewal date of December 20, 2021, pending acceptance of this filing. The claim map is located in Appendix A; the detailed claim data is found in Appendix B.

Placer claims overlap the eastern portion of the AU property.

LOCATION AND ACCESS

The AU property is located in the heart of the Klondike district, approximately 20 km south of Dawson City, on NTS map sheet 1150/13 and 14 (Figure 1). The claims are located to the west of Bonanza and Eldorado creeks, two historical gold placer producing creeks. The property was accessed by road from Dawson City from the Bonanza Creek road, a well-travelled gravel road that leads into the Klondike goldfields, south of the Klondike Highway. The center of the property lies approximately at Latitude 63° 52' 30" N, Longitude 139° 25' W, or UTM NAD 83 Zone 7: 57500E, 7085500N.

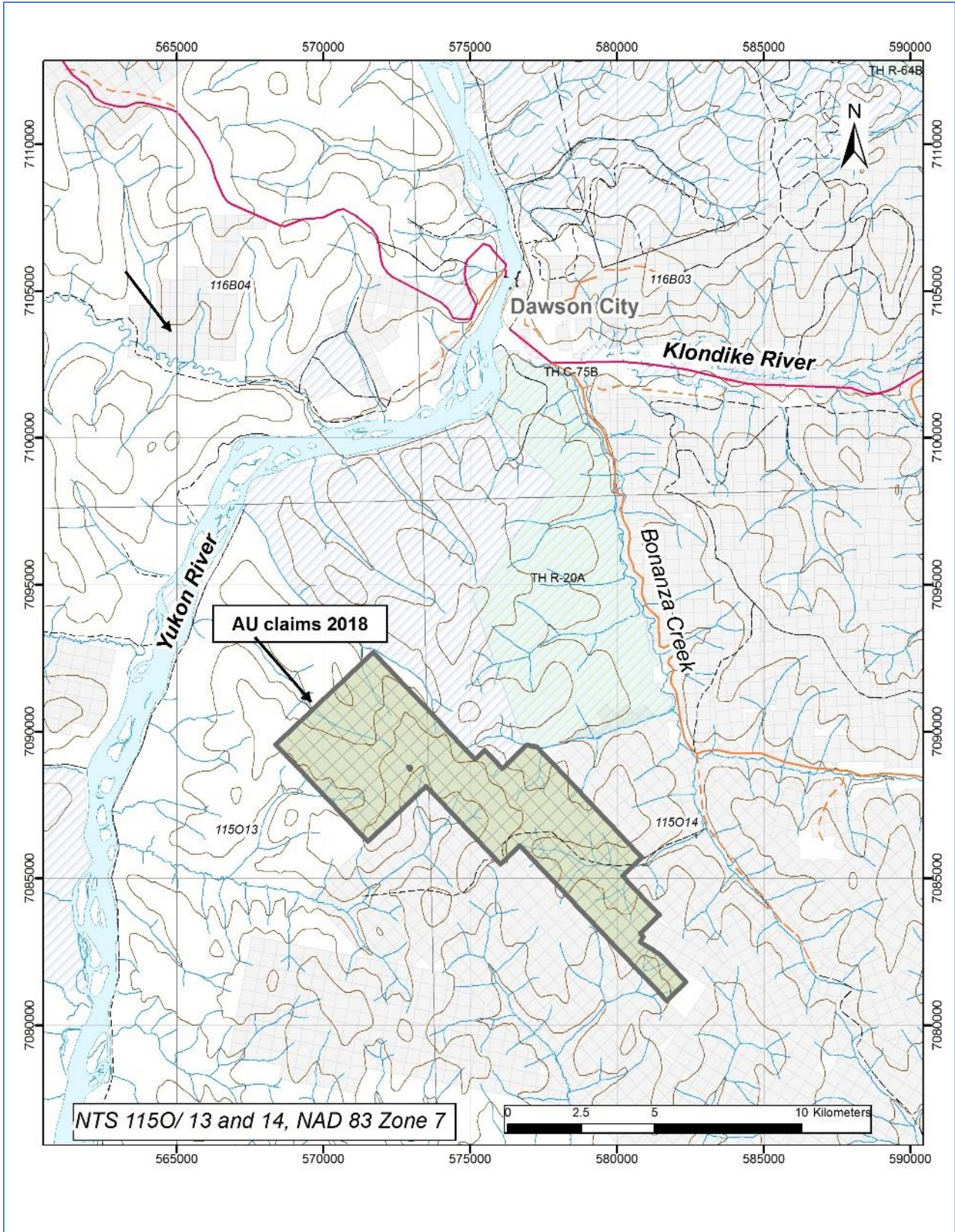


FIGURE 1: GENERAL LOCATION MAP – AU CLAIMS

REGIONAL DATA

The regional data is taken from previous reports on the property.

REGIONAL GEOLOGY

Since this area of central Yukon has not been glaciated, the weathering profile and oxidation level is deeper than in glaciated areas. Metal response in soils may be muted due to prolonged weathering and resulting dilution. Interpretation of soil geochemical results must take this into consideration.

The bedrock geology in the property area is part of the Yukon-Tanana terrane (YTT), a belt of metamorphosed sedimentary, volcanic and plutonic rocks which document a complex magmatic and structural history. Rocks of YTT are interpreted to have started off as a Paleozoic (Devono-Mississippian) magmatic arc built on the margin of the Laurentian craton as a response to subduction of the oceanic lithosphere under the craton. Subsequent rifting created the Slide Mountain Ocean between YTT and Laurentia and lasted until mid-Permian time. In late Permian time, the polarity of the subduction reversed, and the Slide Mountain Ocean began to subduct under YTT, creating a new (Permian) continental arc package. The metavolcanic and metasedimentary rocks of the Klondike Schist and the late Permian Sulphur Creek plutonic suite are part of this Permian arc. In latest Permian time, arc polarity reversed and YTT collided with and overrode the Laurentian margin. Continued convergence led to several other episodes of subduction and their complex magmatic response.

The digital regional geology map published by the Yukon Geological Survey (Figure 2a) shows the claims to be underlain by the Late Permian Sulphur Creek Orthogneiss (unit PqS), described as gneiss/ granite/ granodiorite/ quartz monzonite. The claims overlap the contact with the (earlier) Permian rocks of the Klondike Schist (unit CPK1), described as quartzite/ quartz-muscovite schist/gneiss/amphibolite.

This mapping, originally published in 1996, has now been updated by regional mapping and metallogenic studies conducted by UBC's Mineral Deposit Research Unit (MDRU) and summarized in their Yukon Gold Project report (Figure 2b). There is no change in the distribution or ages of these two units, but the Jim Creek pluton, located west of the claims and formerly thought to be part of the Jurassic Long Lake Suite, is now known to be Permian and is now correlated with the Sulphur Creek Plutonic suite. This intrusion hosts the IND occurrence (Minfile 1150 095, Gleeson).

No new geological information was collected during Coureur des Bois' programs, the regional geology maps are therefore the most detailed ones available at this time.

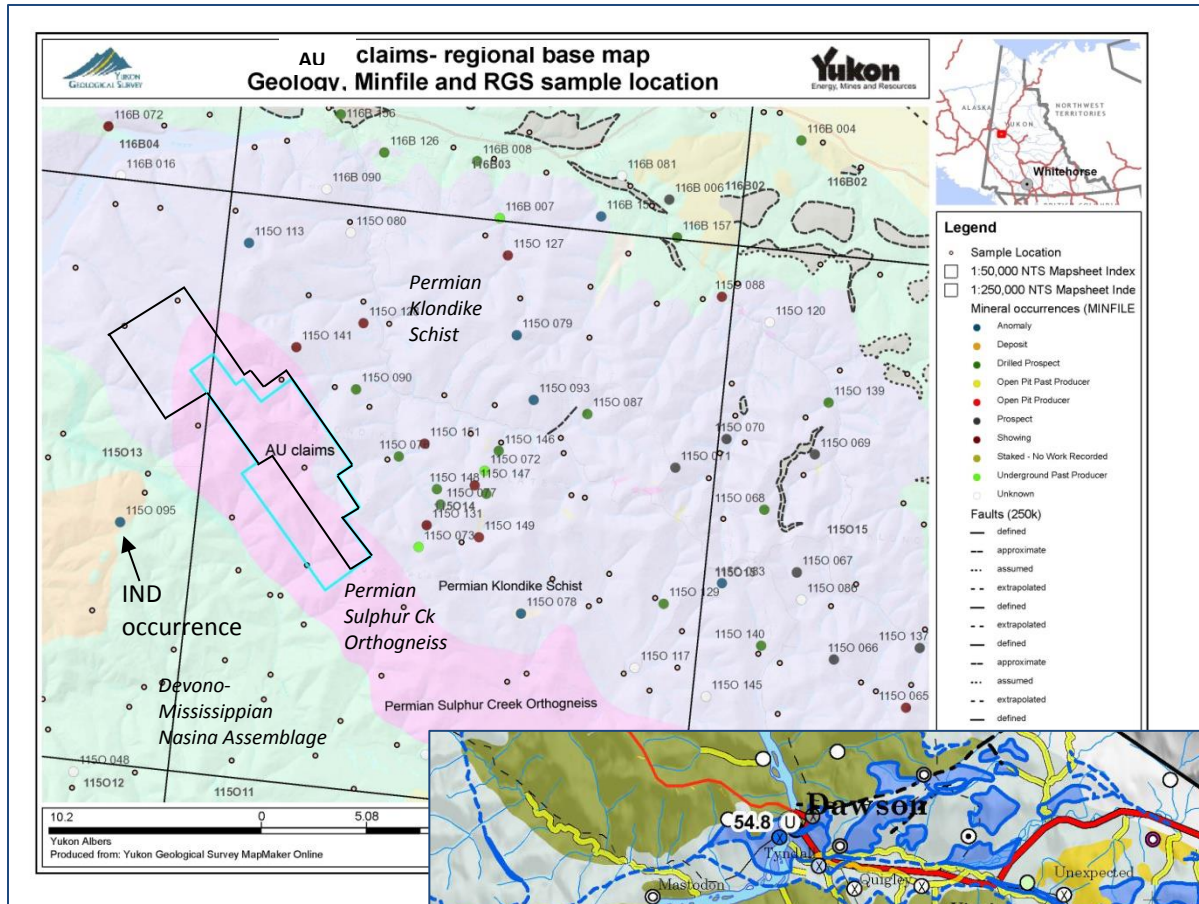
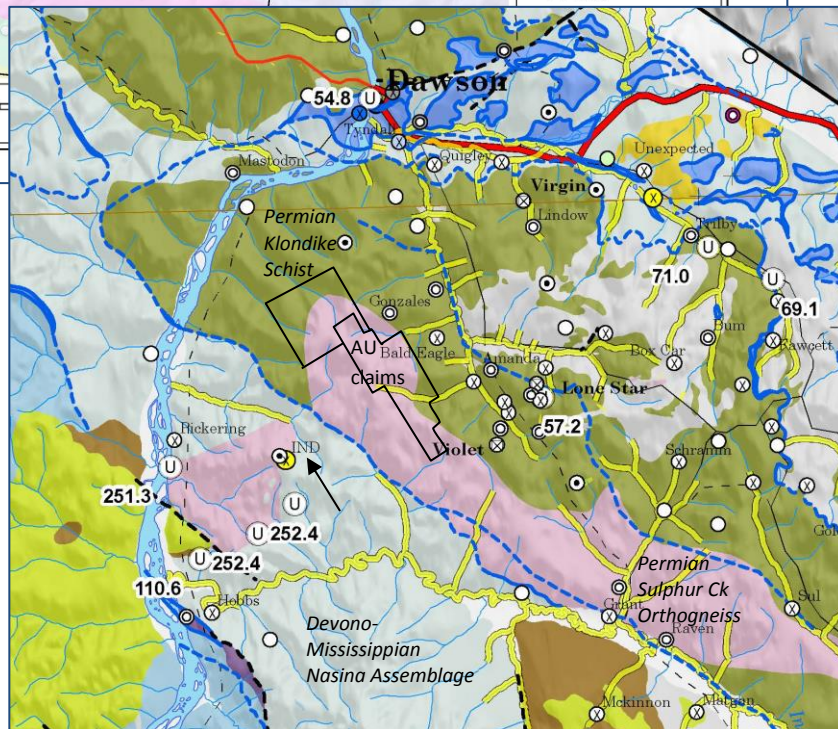


FIGURE 2 A- REGIONAL GEOLOGY- MINFILE
 YGS MAPMAKER



REGIONAL GEOCHEMISTRY

About ten RGS sample sites are located on creeks that drain the AU claims, while only two are located on the claim block itself (Figure 3). The metal response in these samples is flat for all the elements analyzed. The plot below shows that gold response in silt is muted for most of the Klondike district, with only the King Solomon dome area showing a strongly anomalous gold response.

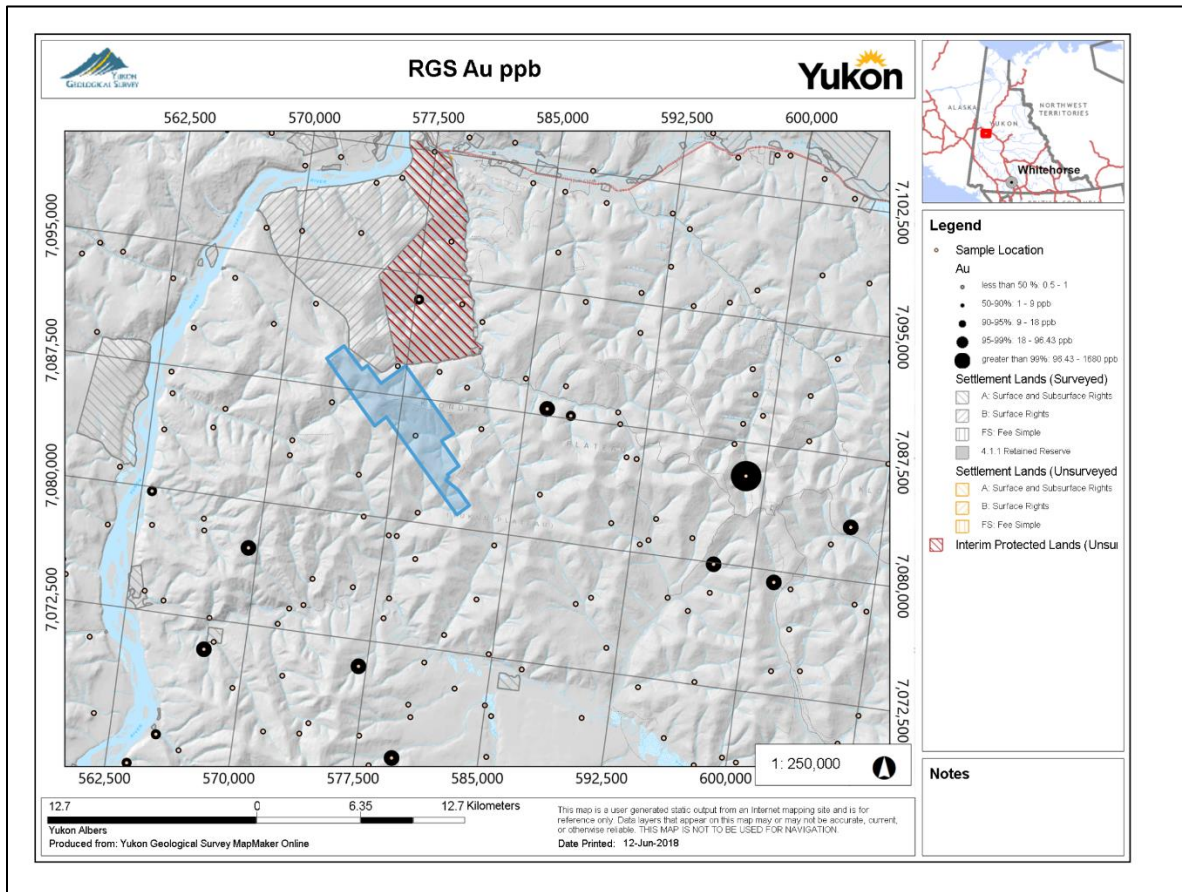


FIGURE 3- RGS DATA FOR AU (PPB)

REGIONAL GEOPHYSICS

Regional magnetic data is available from the YGS website. Figure 4 below shows the first derivative magnetic survey, with the outline of the AU claim block shown in black.

Magnetic signature for the claim area is overall flat and subdued, apart from an isolated weak mag high in the middle of the claim block. The low magnetic response seems to be the signature of the Sulphur Creek Orthogneiss while The Klondike Schist, to the north and east of the claim block, shows a distinct high mag signature.

The southwestern boundary of the claim block lines up with a linear discontinuity in magnetic signature, which, according to the regional geology maps, corresponds to the contact with the Devono-Mississippian Nasina assemblage.

The neighbouring intrusion hosting the IND occurrence, also appears to have a subdued magnetic response.

The isolated higher mag at the center of the claim block has yet to be explained.

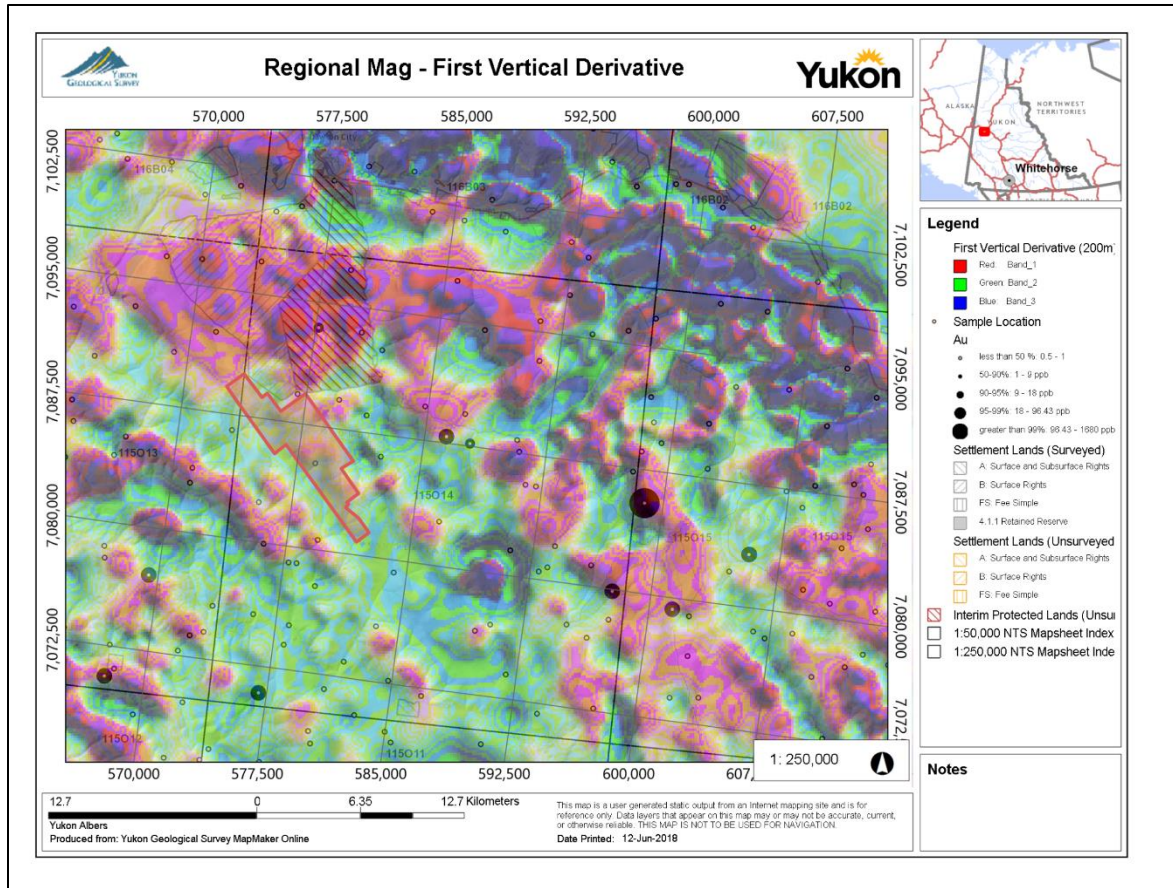


FIGURE 4- REGIONAL FIRST DERIVATIVE MAG

MINERALIZATION

Most of the claim block is underlain by the Permian Sulphur Creek Plutonic Suite. Mineralization in the region is mostly associated with rocks of the Klondike Schist, as is evident from the distribution of Minfile occurrences as seen on Figure 2. The Minfile occurrences that are displayed to be hosted by the Sulphur Creek Orthogneiss are in fact hosted in pendants of Klondike Schist within the orthogneiss.

The neighbouring IND occurrence (Minfile 1150 095, Gleeson) is located 7 km west of the claims block. It is hosted in the Jim Creek pluton, formerly thought to be part of the Jurassic Long Lake Suite. However recent age dating showed the host intrusion to be Permian and that body is now correlated with the Sulphur Creek Plutonic suite (Figure 2). Formerly known as a tungsten skarn, recent work by Aldrin Resources outlined a sheeted sill complex cut by bluish quartz veins. Trench samples yielded up to 12g/t Au (Allan et al, 2012).

Since the AU claims are underlain by the same host rocks as those that host the IND, this same type of mineralization could potentially be found on the AU claims.

PREVIOUS WORK

Claims AU 1 to 130 were staked in September 2012, and a first phase of widely spaced soil sampling (281 samples) proceeded shortly afterwards. A second block of adjoining claims (AU 131 to 186) was staked to the north in October 2012, and widely-spaced soil sampling (231 samples) of these claims took place in September 29th to October 2nd 2013 (Héon 2013).

In 2015, a total of 179 soil samples were collected on five small detailed grids that were established over anomalous sample sites outlined during the 2012-2013 programs (Héon 2016).

In 2017, a total of 21 person-days of fieldwork were conducted on the AU claims. Soil sampling took place on July 18 and 20, September 11, and October 6 to 9. The 2017 work focused on expanding and infilling the eastern portion of the grid, as well as infilling an area surrounding the zone of anomalous soils outlined by previous work. Sampling of an area that had previously returned values of 25 ppb Au and anomalous Ba, Co, La, Mn, and Pb yielded two strongly anomalous values of 508 and 120 ppb Au (Héon 2018).

2018 SOIL SURVEY

DESCRIPTION OF WORK

In 2018, 98 claims were added at the northern end of the claims block. A soil sampling program, conducted on October 2 and 4, 2019, resulted in 19 person-days of work, including one day for demobilization. Other expenses were cost-shared with other projects.

A soil survey was conducted to provide more detailed coverage in the area of anomalous soils, corresponding to the northern end of the 2017 claim block. A grid was established to span two distinct anomalies:

- One area where two consecutive samples from the 2017 survey, spaced 50 m apart, returned values of 508 and 120 ppb Au, adjacent to a 2013 sample that assayed 25 ppb Au.
- Another area, 1.5 km to the south, where a 2013 sample assayed 78 ppb Au.

Four grid lines measured approximately 3 km long, and three other lines measured between 1.5 and 1.9 km long; line spacing was about 150 m and sample spacing was roughly 75 m. This grid provided infill coverage of previous sampling. A total of 227 soil samples were analyzed. The 2018 results are displayed in geochemical maps found in Appendix D; the assay certificate is located in Appendix F.

Figure 5 shows the distribution of the various grids throughout the sampling history of the property; the 2018 samples are displayed in yellow. Figure 6 show the 2018 samples with respect to the historical grid; the two anomalous zones are highlighted for reference.

METHODOLOGY

Sample sites were pre-determined and stored in the sampler's GPS unit. The samplers navigated to the planned waypoints using their GPS, and sampled the B or C horizon at the sample site using a mattock or soil auger. The soil sample was put in a Kraft bag which was labeled with the waypoint number.

Samples were bagged, brought to Whitehorse and shipped directly to ALS Minerals sample prep facility in Whitehorse.

Samples were prepped according to prep code 41, where the samples were dried at <60°C/140F, sieved to -180 micron (80 mesh) and both fractions retained. The samples were then assayed using the Au-ICP21 package, a 30g fire assay with AES finish, and the ME-MS41L for the multi-element analyses.

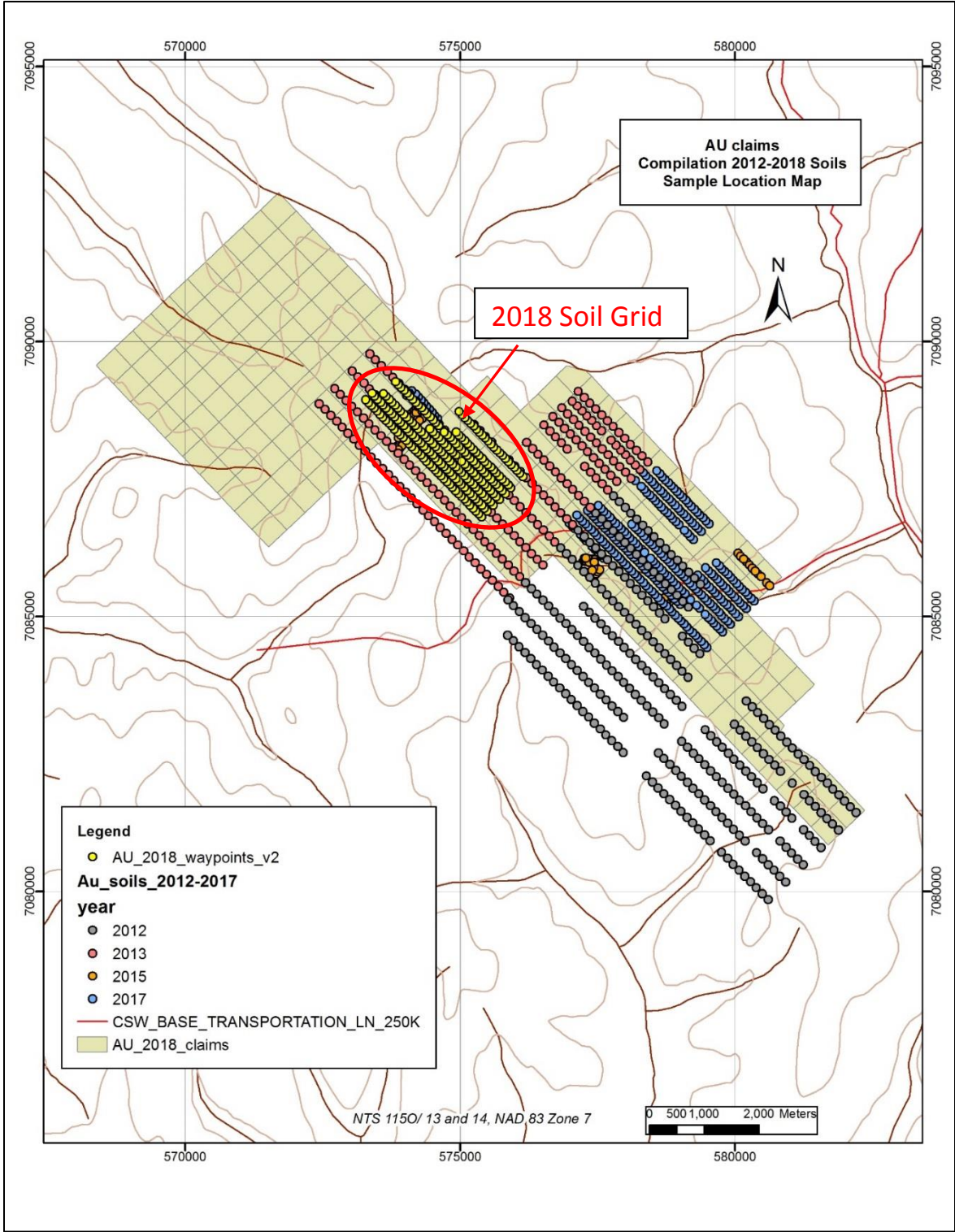


FIGURE 5: LOCATION MAP OF THE DIFFERENT SOIL GRIDS BY YEAR

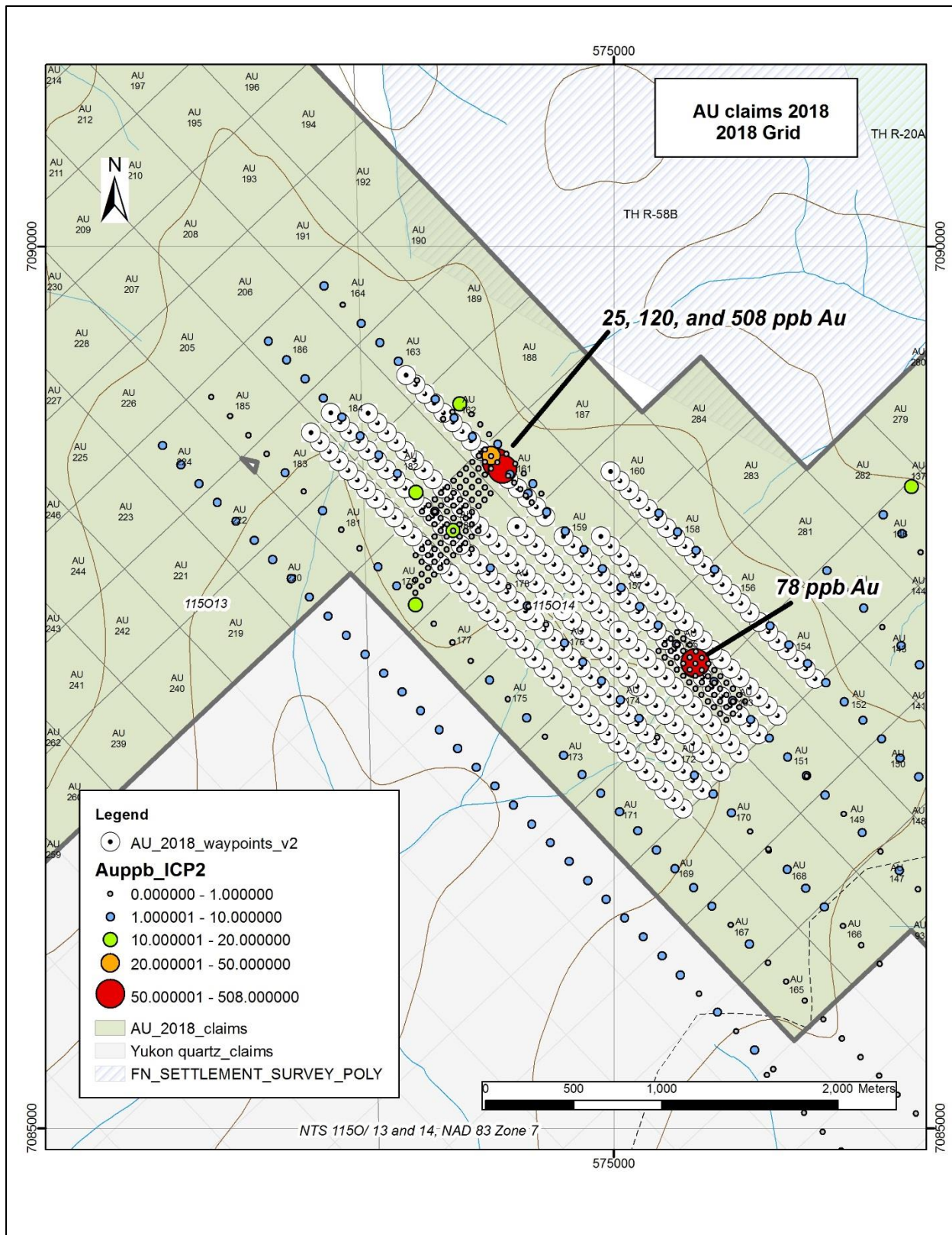


FIGURE 6: LOCATION OF 2018 SOIL GRID WITH RESPECT TO 2017 GOLD ANOMALIES AND HISTORICAL GRID

2018 RESULTS

Soil geochemical maps for Au, As, Ba, Bi, Ce, Pb and U are shown in Appendix D. The 2018 assay results are listed in the assay certificates compiled in Appendix F. Gold values below detection limit (1 ppb) were converted in the digital database to half of that detection limit.

The geochemical maps display the range of values for selected elements. The ranges of values were chosen in order to best represent the distribution of ranges of values for each element. Metal values are generally low. Muted metal response is expected in non-glaciated terrain as the prolonged weathering and oxidation of sample material may cause leaching and therefore dilution of metals. The metal signature and anomaly thresholds may therefore be at lower grade than in glaciated areas.

The 2018 results are shown in isolation of the rest of the grid for clarity but the location of earlier gold anomalies is shown for context. The anomaly thresholds for gold and lead are the same as those displayed in the 2012 to 2017 compilation (Héon 2018); thresholds for the other elements were tailored to the 2018 distribution of elements.

From this 2018 soil survey, the following observations can be made:

- Metal response in this survey is low but locally statistically anomalous for some elements.
- The median gold value was below detection limit (1 ppb, Table 1). Out of 227 samples, only three assayed > 10 ppb Au.
- **A highly anomalous value of 64 ppb Au was sampled on the eastern edge of the grid; this is coincident with a Pb value of 116 ppm, also highly anomalous.** The grid line is an extension of an existing line, the anomalous sample is the second to last sample of the line, with no samples to the SW or NE and only one sample following it to the NW. This anomaly is therefore considered open in three directions.
- Samples taken near those 2017 samples that assayed 508 ppb and 120 ppb gold (analyzed by fire assay) did not duplicate the anomaly.
- Although a good portion of the grid is at 150 m spacing, the location of the 508 and 120 ppb Au anomaly has no samples to the east of it, and to the west is constrained by a tightly spaced but narrow grid. That anomaly is therefore still considered open.
- The location of the 2013 78 ppb Au anomaly has adequate coverage around it; the 2018 survey did not duplicate the 2013 results.
- A small cluster of highly anomalous lead occurs at the western edge of the 2018 grid: 70.2, 1228, and 112.5 ppm Pb.
- Arsenic values are quite low, with a maximum of 28 ppm.
- Bismuth values are very low but shows a map pattern that suggests formational controls.

The following table lists the basic statistics for the main elements.

TABLE 1: BASIC STATISTICS FOR 2018 SOILS

	Au ppb	Ag	Al	As	Ba	Bi	Cd	Ce	Co	Cr	Cs	Cu
max	64	1.285	2.33	28.8	1710	1.13	0.929	147.5	12.8	47.3	1.09	105
median	< d.l.	0.109	1.37	7.94	311	0.217	0.183	43.5	5.97	21.5	0.477	15.45
min	< d.l.	0.011	0.58	1.81	57	0.122	0.051	19.9	1.745	5.82	0.135	7.54
	Fe	Ga	Hg	Mn	Mo	Ni	P	Pb	Pd	Pt	S	Sb
max	3.47	7.31	0.18	1055	2.75	26.5	0.082	128	0.003	0	0.35	0.949
median	2.06	4.37	0.03	263	0.98	13.05	0.035	25.3	0.001	0	0.02	0.407
min	0.93	1.435	0.01	53.9	0.46	2.99	0.015	6.81	0.001	0	0.01	0.149

	Sn	Ta	Te	Th	Ti	Tl	U	V	W	Y	Zn	Zr
max	0.79	0.128	0.06	14.65	0.071	0.259	14.9	77.6	0.661	32.9	138	18.05
median	0.42	0.014	0.03	3.23	0.042	0.1	1.03	40.4	0.183	7.05	51	0.88
min	0.18	0.005	0.01	0.045	0.006	0.054	0.395	6.4	0.027	1.98	19.1	0.06

CONCLUSIONS AND RECOMMENDATIONS

The initial 2012-2013 soil surveys were conducted on widely-spaced lines (450m apart). The 2015 work consisted of small focused grids infilling near the 2012-2013 anomalies. The 2017 work infilled an area to the north following up on anomalous results and yielded significant gold anomalies. The 2017 work also expanded and infilled the eastern portion of the grid. The 2018 work infilled a section of the northern portion of the grid at a good sampling density. This coverage could be extended.

The 2018 survey was not successful in duplicating the previous anomalous results. The fact that previous anomalous results were not reproduced opens up the possibility that the soil sampling methodology, such as depth of samples, needs to be evaluated to make sure the sampling method is adequate throughout all surveys.

No prospecting took place during this work program.

Metal response was generally low and no element correlation could be determined, except for a coincident gold (64 ppb) and lead (116 ppm) at the northeastern edge of the soil grid.

The portion of the property underlain by the Klondike Schist, according to the regional geology map, remains largely untested.

In light of these results, the following work is proposed:

- Continued infill sampling around the 506 and 120 ppb Au anomaly, as well as around the new 64 ppb Au anomaly.
- Air photo interpretation, looking for evidence for structures as controls to orogenic gold mineralization.
- Soil coverage of the northern portion of the claim block, including the new claims, and of area possibly underlain by the Klondike Schist.
- More complete infill sampling of soil grid near anomalies outlined, and with soil augers instead of mattocks, to increase the sampling depth.
- Geological mapping and prospecting of the property, with focus on the contacts, potential outcrops of Klondike Schist, characterization of Sulphur Creek body, magnetic high area, high As and Au values in soil, and the three known gold anomalies.
- Trenching of those same areas to determine the source of the anomalies.

Additional work would be dependent on the results of this proposed phase of work.

Signed, in Whitehorse, June 18, 2018

Danièle Héon, P. Geo.

	Sn	Ta	Te	Th	Ti	Tl	U	V	W	Y	Zn	Zr
max	0.79	0.128	0.06	14.65	0.071	0.259	14.9	77.6	0.661	32.9	138	18.05
median	0.42	0.014	0.03	3.23	0.042	0.1	1.03	40.4	0.183	7.05	51	0.88
min	0.18	0.005	0.01	0.045	0.006	0.054	0.395	6.4	0.027	1.98	19.1	0.06

CONCLUSIONS AND RECOMMENDATIONS

The initial 2012-2013 soil surveys were conducted on widely-spaced lines (450m apart). The 2015 work consisted of small focused grids infilling near the 2012-2013 anomalies. The 2017 work infilled an area to the north following up on anomalous results and yielded significant gold anomalies. The 2017 work also expanded and infilled the eastern portion of the grid. The 2018 work infilled a section of the northern portion of the grid at a good sampling density. This coverage could be extended.

The 2018 survey was not successful in duplicating the previous anomalous results. The fact that previous anomalous results were not reproduced opens up the possibility that the soil sampling methodology, such as depth of samples, needs to be evaluated to make sure the sampling method is adequate throughout all surveys.

No prospecting took place during this work program.

Metal response was generally low and no element correlation could be determined, except for a coincident gold (64 ppb) and lead (116 ppm) at the northeastern edge of the soil grid.

The portion of the property underlain by the Klondike Schist, according to the regional geology map, remains largely untested.

In light of these results, the following work is proposed:

- Continued infill sampling around the 506 and 120 ppb Au anomaly, as well as around the new 64 ppb Au anomaly.
- Air photo interpretation, looking for evidence for structures as controls to orogenic gold mineralization.
- Soil coverage of the northern portion of the claim block, including the new claims, and of area possibly underlain by the Klondike Schist.
- More complete infill sampling of soil grid near anomalies outlined, and with soil augers instead of mattocks, to increase the sampling depth.
- Geological mapping and prospecting of the property, with focus on the contacts, potential outcrops of Klondike Schist, characterization of Sulphur Creek body, magnetic high area, high As and Au values in soil, and the three known gold anomalies.
- Trenching of those same areas to determine the source of the anomalies.

Additional work would be dependent on the results of this proposed phase of work.

Signed, in Whitehorse, June 18, 2018



Danièle Héon, P. Geo.

STATEMENT OF QUALIFICATIONS

I, Danièle Héon, of:

12 Marigold Place
Whitehorse, Yukon
Y1A 6A2

do hereby declare that;

- I am an independent contracting geologist.
- I graduated with a Bachelor of Science degree from McGill University in Montréal in 1984.
- I have worked as a geologist since graduation from University and in the Yukon since 1990.
- I am a member in good standing of the Association of Professional Engineers and Geoscientists of BC (APEGBC), no. 38518.
- I have not visited the property.
- I am the author of this report in which I compile and present the work and the results of the soil survey conducted by Coureur des Bois Exploration Ltée Ltd., based on the data provided by Coureur des Bois Exploration Ltée Ltd.
- I have not been involved in the fieldwork described herein, so therefore my responsibility is limited to the interpretation and presentation of the data provided.
- This report is intended to satisfy assessment requirements only.

Danièle Héon, P. Geo.

REFERENCES

Allan, M.M., Hart, C.J.R., and Mortensen, J.K. (eds), 2012, Yukon Gold Project Final Technical Report, Mineral Deposit Research Unit, University of British Columbia.

Allan, M.M., Hart, C.J.R., and Mortensen, J.K. (eds), 2012, Geological Map of the Dawson Range- White Gold Area, Yukon and East-Central Alaska, 1: 400,000, Mineral Deposit Research Unit, University of British Columbia.

Héon, D., 2018, Assessment Report on the 2017 Geochemical Survey of the AU Claims.

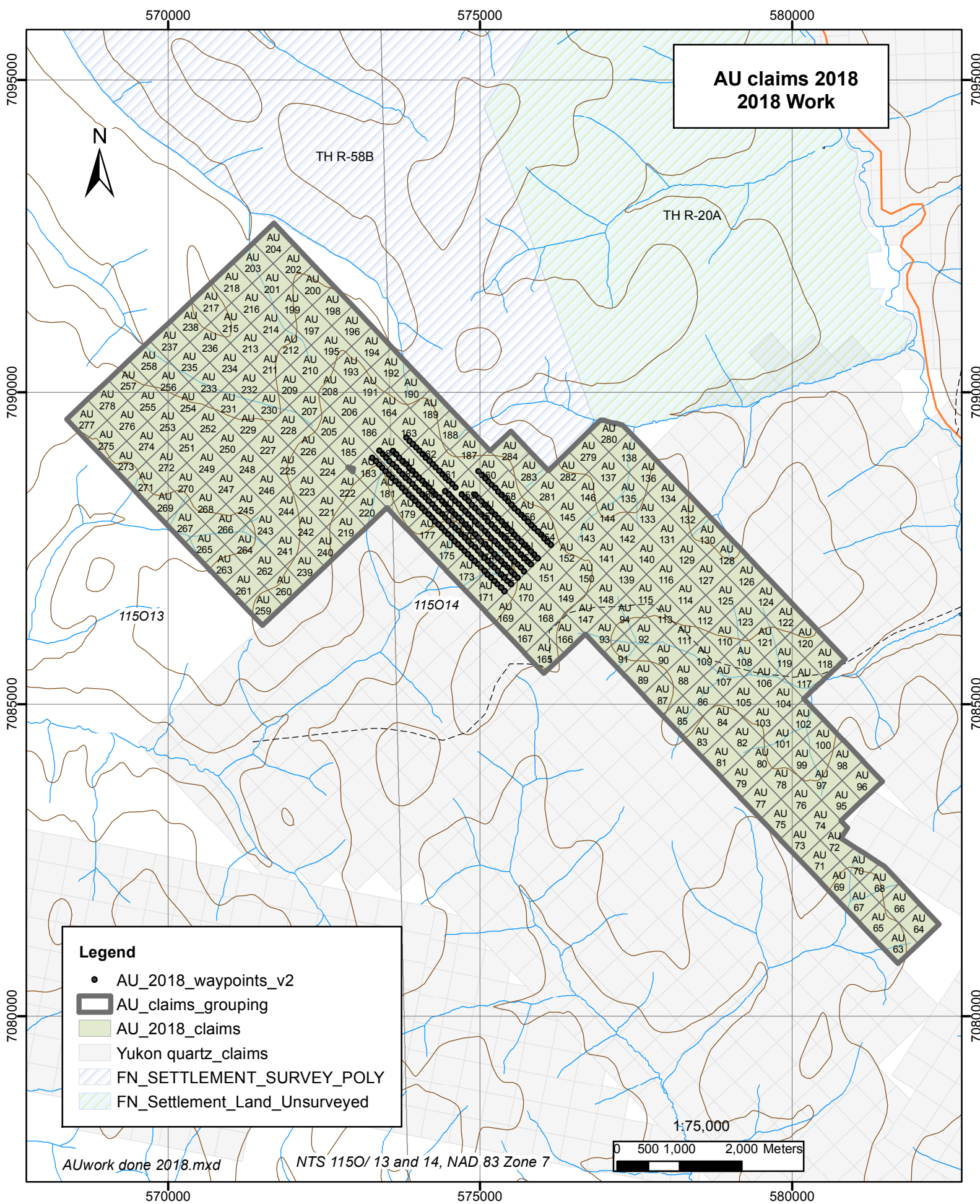
Héon, D., 2016, Assessment Report on the 2015 Geochemical Survey of the AU Claims.

Héon, D., 2013, Assessment Report on the 2012 and 2013 Geochemical Surveys of the AU Claims.

Digital data as provided by the Yukon Geological Survey and government agencies, in particular:

- Deklerk, R. (compiler), 2003. Yukon MINFILE 2003 – A database of mineral occurrences. Yukon Geological Survey. And Yukon MINFILE, 2012. Yukon MINFILE – A database of mineral occurrences. Yukon Geological Survey, http://www.geology.gov.yk.ca/databases_gis.html
- Gordey, S.P., Makepeace, A.J., (compilers), , [2003-9\(D\), Open File \(Geological - Bedrock\); Yukon Digital Geology \(version 2\)](#) Yukon Geological Survey.
- Mineral Claims (Yukon Mining Recorder) <http://www.yukonminingrecorder.ca/>
- Geomatics Yukon for regional shape file data: <http://geomaticsyukon.ca/data/datasets>
- Yukon Geological Survey, 2011. YGS Mapmaker online <http://maps.gov.yk.ca/imf.jsp?site=YGS>

APPENDIX A- CLAIM MAP



**AU claims 2018
2018 Work**



TH R-58B

TH R-20A

115013

115014

Legend

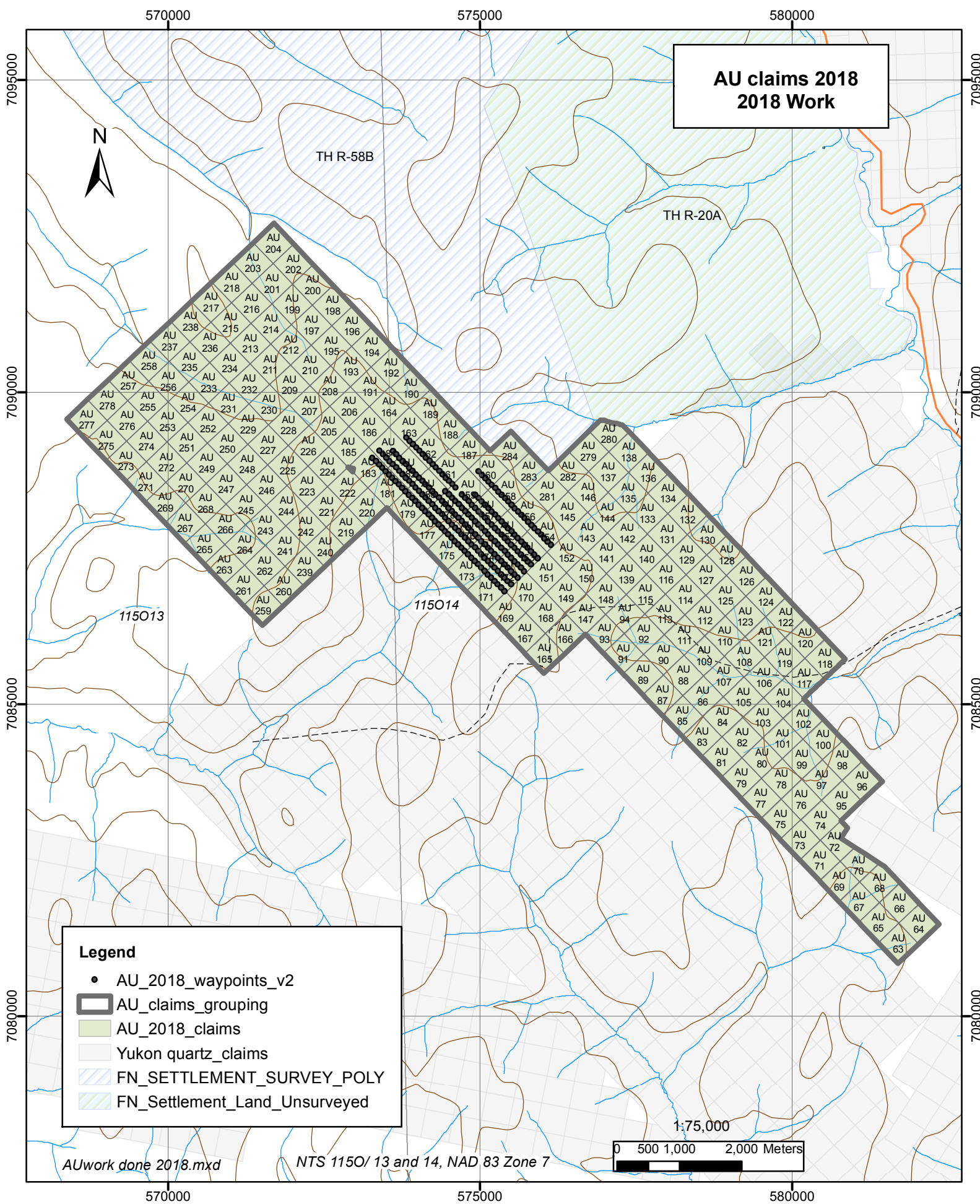
- AU_2018_waypoints_v2
- ▭ AU_claims_grouping
- AU_2018_claims
- Yukon quartz_claims
- ▨ FN_SETTLEMENT_SURVEY_POLY
- ▨ FN_Settlement_Land_Unsurveyed

1:75,000



AUwork done 2018.mxd

NTS 1150/ 13 and 14, NAD 83 Zone 7



APPENDIX B- CLAIM DATA

NTS Map	Grant Number	Claim Label	Claim Owner	Claim Expiry Date	Renewal Period (years)	Requested Expiry Date	Assessment work applied	Cost to renew
115O14	YF41306	AU 136	Coureur des Bois Ltee Ltd. - 100%	20/12/2020	1	20-Dec-2021	\$100.00	\$5.00
115O14	YF41307	AU 137	Coureur des Bois Ltee Ltd. - 100%	20/12/2020	1	20-Dec-2021	\$100.00	\$5.00
115O14	YF41308	AU 138	Coureur des Bois Ltee Ltd. - 100%	20/12/2020	1	20-Dec-2021	\$100.00	\$5.00
115O14	YF41309	AU 139	Coureur des Bois Ltee Ltd. - 100%	20/12/2020	1	20-Dec-2021	\$100.00	\$5.00
115O14	YF41310	AU 140	Coureur des Bois Ltee Ltd. - 100%	20/12/2020	1	20-Dec-2021	\$100.00	\$5.00
115O14	YF41311	AU 141	Coureur des Bois Ltee Ltd. - 100%	20/12/2020	1	20-Dec-2021	\$100.00	\$5.00
115O14	YF41312	AU 142	Coureur des Bois Ltee Ltd. - 100%	20/12/2020	1	20-Dec-2021	\$100.00	\$5.00
115O14	YF41313	AU 143	Coureur des Bois Ltee Ltd. - 100%	20/12/2020	1	20-Dec-2021	\$100.00	\$5.00
115O14	YF41314	AU 144	Coureur des Bois Ltee Ltd. - 100%	20/12/2020	1	20-Dec-2021	\$100.00	\$5.00
115O14	YF41315	AU 145	Coureur des Bois Ltee Ltd. - 100%	20/12/2020	1	20-Dec-2021	\$100.00	\$5.00
115O14	YF41316	AU 146	Coureur des Bois Ltee Ltd. - 100%	20/12/2020	1	20-Dec-2021	\$100.00	\$5.00
115O14	YF41317	AU 147	Coureur des Bois Ltee Ltd. - 100%	20/12/2020	1	20-Dec-2021	\$100.00	\$5.00
115O14	YF41318	AU 148	Coureur des Bois Ltee Ltd. - 100%	20/12/2020	1	20-Dec-2021	\$100.00	\$5.00
115O14	YF41319	AU 149	Coureur des Bois Ltee Ltd. - 100%	20/12/2020	1	20-Dec-2021	\$100.00	\$5.00
115O14	YF41320	AU 150	Coureur des Bois Ltee Ltd. - 100%	20/12/2020	1	20-Dec-2021	\$100.00	\$5.00
115O14	YF41321	AU 151	Coureur des Bois Ltee Ltd. - 100%	20/12/2020	1	20-Dec-2021	\$100.00	\$5.00
115O14	YF41322	AU 152	Coureur des Bois Ltee Ltd. - 100%	20/12/2020	1	20-Dec-2021	\$100.00	\$5.00
115O14	YF41323	AU 153	Coureur des Bois Ltee Ltd. - 100%	20/12/2020	1	20-Dec-2021	\$100.00	\$5.00
115O14	YF41324	AU 154	Coureur des Bois Ltee Ltd. - 100%	20/12/2020	1	20-Dec-2021	\$100.00	\$5.00
115O14	YF41325	AU 155	Coureur des Bois Ltee Ltd. - 100%	20/12/2020	1	20-Dec-2021	\$100.00	\$5.00
115O14	YF41326	AU 156	Coureur des Bois Ltee Ltd. - 100%	20/12/2020	1	20-Dec-2021	\$100.00	\$5.00
115O14	YF41327	AU 157	Coureur des Bois Ltee Ltd. - 100%	20/12/2020	1	20-Dec-2021	\$100.00	\$5.00
115O14	YF41328	AU 158	Coureur des Bois Ltee Ltd. - 100%	20/12/2020	1	20-Dec-2021	\$100.00	\$5.00
115O14	YF41329	AU 159	Coureur des Bois Ltee Ltd. - 100%	20/12/2020	1	20-Dec-2021	\$100.00	\$5.00
115O14	YF41330	AU 160	Coureur des Bois Ltee Ltd. - 100%	20/12/2020	1	20-Dec-2021	\$100.00	\$5.00
115O14	YF41331	AU 161	Coureur des Bois Ltee Ltd. - 100%	20/12/2020	1	20-Dec-2021	\$100.00	\$5.00
115O14	YF41332	AU 162	Coureur des Bois Ltee Ltd. - 100%	20/12/2020	1	20-Dec-2021	\$100.00	\$5.00
115O14	YF41333	AU 163	Coureur des Bois Ltee Ltd. - 100%	20/12/2020	1	20-Dec-2021	\$100.00	\$5.00
115O14	YF41334	AU 164	Coureur des Bois Ltee Ltd. - 100%	20/12/2020	1	20-Dec-2021	\$100.00	\$5.00
115O14	YF41335	AU 165	Coureur des Bois Ltee Ltd. - 100%	20/12/2020	1	20-Dec-2021	\$100.00	\$5.00
115O14	YF41336	AU 166	Coureur des Bois Ltee Ltd. - 100%	20/12/2020	1	20-Dec-2021	\$100.00	\$5.00

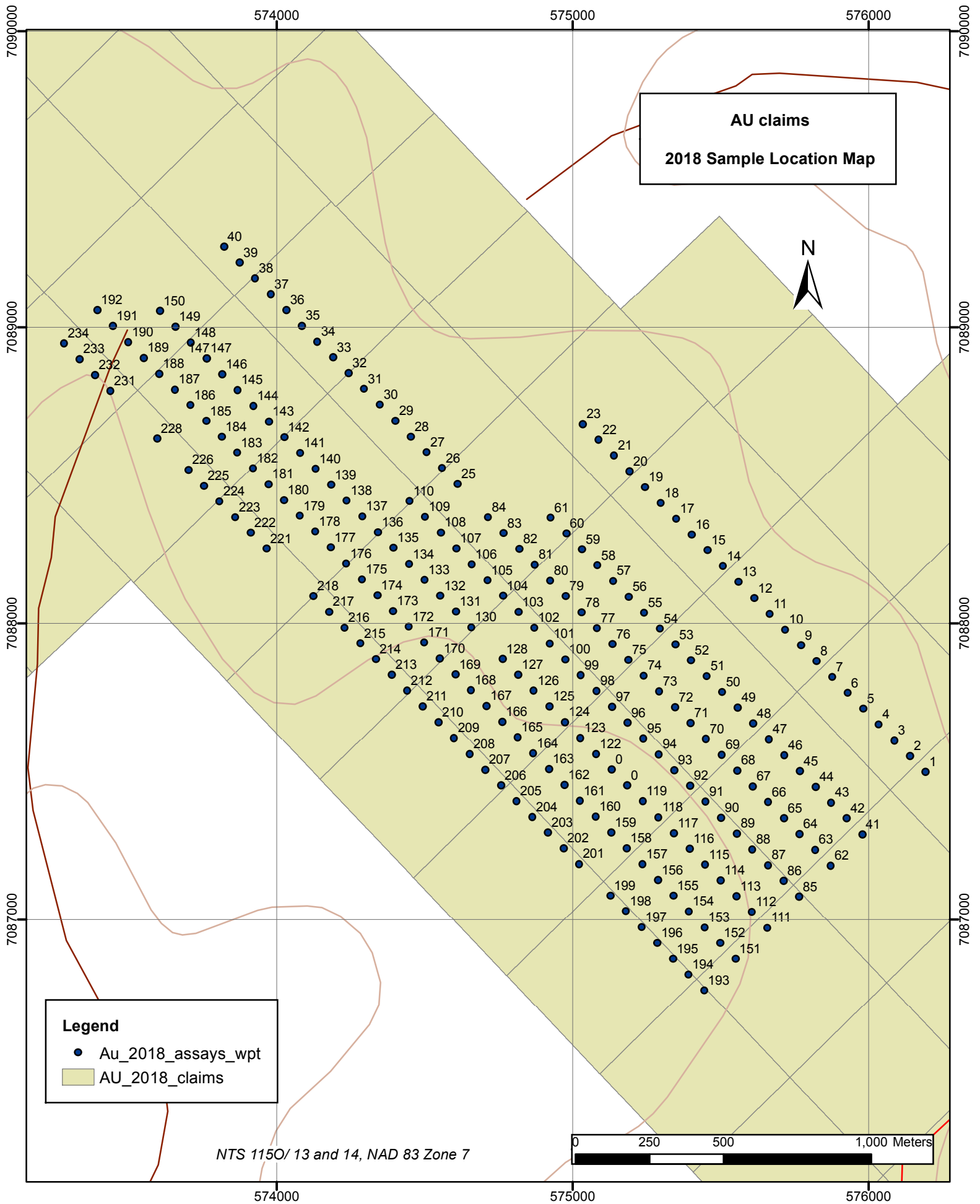
NTS Map	Grant Number	Claim Label	Claim Owner	Claim Expiry Date	Renewal Period (years)	Requested Expiry Date	Assessment work applied	Cost to renew
115O14	YF41337	AU 167	Coureur des Bois Ltee Ltd. - 100%	20/12/2020	1	20-Dec-2021	\$100.00	\$5.00
115O14	YF41338	AU 168	Coureur des Bois Ltee Ltd. - 100%	20/12/2020	1	20-Dec-2021	\$100.00	\$5.00
115O14	YF41339	AU 169	Coureur des Bois Ltee Ltd. - 100%	20/12/2020	1	20-Dec-2021	\$100.00	\$5.00
115O14	YF41340	AU 170	Coureur des Bois Ltee Ltd. - 100%	20/12/2020	1	20-Dec-2021	\$100.00	\$5.00
115O14	YF41341	AU 171	Coureur des Bois Ltee Ltd. - 100%	20/12/2020	1	20-Dec-2021	\$100.00	\$5.00
115O14	YF41342	AU 172	Coureur des Bois Ltee Ltd. - 100%	20/12/2020	1	20-Dec-2021	\$100.00	\$5.00
115O14	YF41343	AU 173	Coureur des Bois Ltee Ltd. - 100%	20/12/2020	1	20-Dec-2021	\$100.00	\$5.00
115O14	YF41344	AU 174	Coureur des Bois Ltee Ltd. - 100%	20/12/2020	1	20-Dec-2021	\$100.00	\$5.00
115O14	YF41345	AU 175	Coureur des Bois Ltee Ltd. - 100%	20/12/2020	1	20-Dec-2021	\$100.00	\$5.00
115O14	YF41346	AU 176	Coureur des Bois Ltee Ltd. - 100%	20/12/2020	1	20-Dec-2021	\$100.00	\$5.00
115O14	YF41347	AU 177	Coureur des Bois Ltee Ltd. - 100%	20/12/2020	1	20-Dec-2021	\$100.00	\$5.00
115O14	YF41348	AU 178	Coureur des Bois Ltee Ltd. - 100%	20/12/2020	1	20-Dec-2021	\$100.00	\$5.00
115O14	YF41349	AU 179	Coureur des Bois Ltee Ltd. - 100%	20/12/2020	1	20-Dec-2021	\$100.00	\$5.00
115O14	YF41350	AU 180	Coureur des Bois Ltee Ltd. - 100%	20/12/2020	1	20-Dec-2021	\$100.00	\$5.00
115O14	YF41351	AU 181	Coureur des Bois Ltee Ltd. - 100%	20/12/2020	1	20-Dec-2021	\$100.00	\$5.00
115O14	YF41352	AU 182	Coureur des Bois Ltee Ltd. - 100%	20/12/2020	1	20-Dec-2021	\$100.00	\$5.00
115O14	YF41353	AU 183	Coureur des Bois Ltee Ltd. - 100%	20/12/2020	1	20-Dec-2021	\$100.00	\$5.00
115O14	YF41354	AU 184	Coureur des Bois Ltee Ltd. - 100%	20/12/2020	1	20-Dec-2021	\$100.00	\$5.00
115O14	YF41355	AU 185	Coureur des Bois Ltee Ltd. - 100%	20/12/2020	1	20-Dec-2021	\$100.00	\$5.00
115O14	YF41356	AU 186	Coureur des Bois Ltee Ltd. - 100%	20/12/2020	1	20-Dec-2021	\$100.00	\$5.00
115O14	YF59877	AU 187	Coureur des Bois Ltee Ltd. - 100%	02/10/2019	2.25	20-Dec-2021	\$225.00	\$12.50
115O14	YF59878	AU 188	Coureur des Bois Ltee Ltd. - 100%	02/10/2019	2.25	20-Dec-2021	\$225.00	\$12.50
115O14	YF59879	AU 189	Coureur des Bois Ltee Ltd. - 100%	02/10/2019	2.25	20-Dec-2021	\$225.00	\$12.50
115O14	YF59880	AU 190	Coureur des Bois Ltee Ltd. - 100%	02/10/2019	2.25	20-Dec-2021	\$225.00	\$12.50
115O14	YF59881	AU 191	Coureur des Bois Ltee Ltd. - 100%	02/10/2019	2.25	20-Dec-2021	\$225.00	\$12.50
115O14	YF59882	AU 192	Coureur des Bois Ltee Ltd. - 100%	02/10/2019	2.25	20-Dec-2021	\$225.00	\$12.50
115O14	YF59883	AU 193	Coureur des Bois Ltee Ltd. - 100%	02/10/2019	2.25	20-Dec-2021	\$225.00	\$12.50
115O14	YF59884	AU 194	Coureur des Bois Ltee Ltd. - 100%	02/10/2019	2.25	20-Dec-2021	\$225.00	\$12.50
115O14	YF59885	AU 195	Coureur des Bois Ltee Ltd. - 100%	02/10/2019	2.25	20-Dec-2021	\$225.00	\$12.50
115O14	YF59886	AU 196	Coureur des Bois Ltee Ltd. - 100%	02/10/2019	2.25	20-Dec-2021	\$225.00	\$12.50
115O14	YF59887	AU 197	Coureur des Bois Ltee Ltd. - 100%	02/10/2019	2.25	20-Dec-2021	\$225.00	\$12.50

NTS Map	Grant Number	Claim Label	Claim Owner	Claim Expiry Date	Renewal Period (years)	Requested Expiry Date	Assessment work applied	Cost to renew
115O14	YF59888	AU 198	Coureur des Bois Ltee Ltd. - 100%	02/10/2019	2.25	20-Dec-2021	\$225.00	\$12.50
115O14	YF59889	AU 199	Coureur des Bois Ltee Ltd. - 100%	02/10/2019	2.25	20-Dec-2021	\$225.00	\$12.50
115O14	YF59890	AU 200	Coureur des Bois Ltee Ltd. - 100%	02/10/2019	2.25	20-Dec-2021	\$225.00	\$12.50
115O14	YF59891	AU 201	Coureur des Bois Ltee Ltd. - 100%	02/10/2019	2.25	20-Dec-2021	\$225.00	\$12.50
115O14	YF59892	AU 202	Coureur des Bois Ltee Ltd. - 100%	02/10/2019	2.25	20-Dec-2021	\$225.00	\$12.50
115O14	YF59893	AU 203	Coureur des Bois Ltee Ltd. - 100%	02/10/2019	2.25	20-Dec-2021	\$225.00	\$12.50
115O14	YF59894	AU 204	Coureur des Bois Ltee Ltd. - 100%	02/10/2019	2.25	20-Dec-2021	\$225.00	\$12.50
115O13	YF59895	AU 205	Coureur des Bois Ltee Ltd. - 100%	02/10/2019	2.25	20-Dec-2021	\$225.00	\$12.50
115O13	YF59896	AU 206	Coureur des Bois Ltee Ltd. - 100%	02/10/2019	2.25	20-Dec-2021	\$225.00	\$12.50
115O13	YF59897	AU 207	Coureur des Bois Ltee Ltd. - 100%	02/10/2019	2.25	20-Dec-2021	\$225.00	\$12.50
115O13	YF59898	AU 208	Coureur des Bois Ltee Ltd. - 100%	02/10/2019	2.25	20-Dec-2021	\$225.00	\$12.50
115O13	YF59899	AU 209	Coureur des Bois Ltee Ltd. - 100%	02/10/2019	2.25	20-Dec-2021	\$225.00	\$12.50
115O13	YF59900	AU 210	Coureur des Bois Ltee Ltd. - 100%	02/10/2019	2.25	20-Dec-2021	\$225.00	\$12.50
115O13	YF59901	AU 211	Coureur des Bois Ltee Ltd. - 100%	02/10/2019	2.25	20-Dec-2021	\$225.00	\$12.50
115O13	YF59902	AU 212	Coureur des Bois Ltee Ltd. - 100%	02/10/2019	2.25	20-Dec-2021	\$225.00	\$12.50
115O13	YF59903	AU 213	Coureur des Bois Ltee Ltd. - 100%	02/10/2019	2.25	20-Dec-2021	\$225.00	\$12.50
115O13	YF59904	AU 214	Coureur des Bois Ltee Ltd. - 100%	02/10/2019	2.25	20-Dec-2021	\$225.00	\$12.50
115O13	YF59905	AU 215	Coureur des Bois Ltee Ltd. - 100%	02/10/2019	2.25	20-Dec-2021	\$225.00	\$12.50
115O13	YF59906	AU 216	Coureur des Bois Ltee Ltd. - 100%	02/10/2019	2.25	20-Dec-2021	\$225.00	\$12.50
115O13	YF59907	AU 217	Coureur des Bois Ltee Ltd. - 100%	02/10/2019	2.25	20-Dec-2021	\$225.00	\$12.50
115O13	YF59908	AU 218	Coureur des Bois Ltee Ltd. - 100%	02/10/2019	2.25	20-Dec-2021	\$225.00	\$12.50
115O13	YF59909	AU 219	Coureur des Bois Ltee Ltd. - 100%	02/10/2019	2.25	20-Dec-2021	\$225.00	\$12.50
115O13	YF59910	AU 220	Coureur des Bois Ltee Ltd. - 100%	02/10/2019	2.25	20-Dec-2021	\$225.00	\$12.50
115O13	YF59911	AU 221	Coureur des Bois Ltee Ltd. - 100%	02/10/2019	2.25	20-Dec-2021	\$225.00	\$12.50
115O13	YF59912	AU 222	Coureur des Bois Ltee Ltd. - 100%	02/10/2019	2.25	20-Dec-2021	\$225.00	\$12.50
115O13	YF59913	AU 223	Coureur des Bois Ltee Ltd. - 100%	02/10/2019	2.25	20-Dec-2021	\$225.00	\$12.50
115O13	YF59914	AU 224	Coureur des Bois Ltee Ltd. - 100%	02/10/2019	2.25	20-Dec-2021	\$225.00	\$12.50
115O13	YF59915	AU 225	Coureur des Bois Ltee Ltd. - 100%	02/10/2019	2.25	20-Dec-2021	\$225.00	\$12.50
115O13	YF59916	AU 226	Coureur des Bois Ltee Ltd. - 100%	02/10/2019	2.25	20-Dec-2021	\$225.00	\$12.50
115O13	YF59917	AU 227	Coureur des Bois Ltee Ltd. - 100%	02/10/2019	2.25	20-Dec-2021	\$225.00	\$12.50
115O13	YF59918	AU 228	Coureur des Bois Ltee Ltd. - 100%	02/10/2019	2.25	20-Dec-2021	\$225.00	\$12.50

NTS Map	Grant Number	Claim Label	Claim Owner	Claim Expiry Date	Renewal Period (years)	Requested Expiry Date	Assessment work applied	Cost to renew
115O13	YF59919	AU 229	Coureur des Bois Ltee Ltd. - 100%	02/10/2019	2.25	20-Dec-2021	\$225.00	\$12.50
115O13	YF59920	AU 230	Coureur des Bois Ltee Ltd. - 100%	02/10/2019	2.25	20-Dec-2021	\$225.00	\$12.50
115O13	YF59921	AU 231	Coureur des Bois Ltee Ltd. - 100%	02/10/2019	2.25	20-Dec-2021	\$225.00	\$12.50
115O13	YF59922	AU 232	Coureur des Bois Ltee Ltd. - 100%	02/10/2019	2.25	20-Dec-2021	\$225.00	\$12.50
115O13	YF59923	AU 233	Coureur des Bois Ltee Ltd. - 100%	02/10/2019	2.25	20-Dec-2021	\$225.00	\$12.50
115O13	YF59924	AU 234	Coureur des Bois Ltee Ltd. - 100%	02/10/2019	2.25	20-Dec-2021	\$225.00	\$12.50
115O13	YF59925	AU 235	Coureur des Bois Ltee Ltd. - 100%	02/10/2019	2.25	20-Dec-2021	\$225.00	\$12.50
115O13	YF59926	AU 236	Coureur des Bois Ltee Ltd. - 100%	02/10/2019	2.25	20-Dec-2021	\$225.00	\$12.50
115O13	YF59927	AU 237	Coureur des Bois Ltee Ltd. - 100%	02/10/2019	2.25	20-Dec-2021	\$225.00	\$12.50
115O13	YF59928	AU 238	Coureur des Bois Ltee Ltd. - 100%	02/10/2019	2.25	20-Dec-2021	\$225.00	\$12.50
115O13	YF59929	AU 239	Coureur des Bois Ltee Ltd. - 100%	02/10/2019	2.25	20-Dec-2021	\$225.00	\$12.50
115O13	YF59930	AU 240	Coureur des Bois Ltee Ltd. - 100%	02/10/2019	2.25	20-Dec-2021	\$225.00	\$12.50
115O13	YF59931	AU 241	Coureur des Bois Ltee Ltd. - 100%	02/10/2019	2.25	20-Dec-2021	\$225.00	\$12.50
115O13	YF59932	AU 242	Coureur des Bois Ltee Ltd. - 100%	02/10/2019	2.25	20-Dec-2021	\$225.00	\$12.50
115O13	YF59933	AU 243	Coureur des Bois Ltee Ltd. - 100%	02/10/2019	2.25	20-Dec-2021	\$225.00	\$12.50
115O13	YF59934	AU 244	Coureur des Bois Ltee Ltd. - 100%	02/10/2019	2.25	20-Dec-2021	\$225.00	\$12.50
115O13	YF59935	AU 245	Coureur des Bois Ltee Ltd. - 100%	02/10/2019	2.25	20-Dec-2021	\$225.00	\$12.50
115O13	YF59936	AU 246	Coureur des Bois Ltee Ltd. - 100%	02/10/2019	2.25	20-Dec-2021	\$225.00	\$12.50
115O13	YF59937	AU 247	Coureur des Bois Ltee Ltd. - 100%	02/10/2019	2.25	20-Dec-2021	\$225.00	\$12.50
115O13	YF59938	AU 248	Coureur des Bois Ltee Ltd. - 100%	02/10/2019	2.25	20-Dec-2021	\$225.00	\$12.50
115O13	YF59939	AU 249	Coureur des Bois Ltee Ltd. - 100%	02/10/2019	2.25	20-Dec-2021	\$225.00	\$12.50
115O13	YF59940	AU 250	Coureur des Bois Ltee Ltd. - 100%	02/10/2019	2.25	20-Dec-2021	\$225.00	\$12.50
115O13	YF59941	AU 251	Coureur des Bois Ltee Ltd. - 100%	02/10/2019	2.25	20-Dec-2021	\$225.00	\$12.50
115O13	YF59942	AU 252	Coureur des Bois Ltee Ltd. - 100%	02/10/2019	2.25	20-Dec-2021	\$225.00	\$12.50
115O13	YF59943	AU 253	Coureur des Bois Ltee Ltd. - 100%	02/10/2019	2.25	20-Dec-2021	\$225.00	\$12.50
115O13	YF59944	AU 254	Coureur des Bois Ltee Ltd. - 100%	02/10/2019	2.25	20-Dec-2021	\$225.00	\$12.50
115O13	YF59945	AU 255	Coureur des Bois Ltee Ltd. - 100%	02/10/2019	2.25	20-Dec-2021	\$225.00	\$12.50
115O13	YF59946	AU 256	Coureur des Bois Ltee Ltd. - 100%	02/10/2019	2.25	20-Dec-2021	\$225.00	\$12.50
115O13	YF59947	AU 257	Coureur des Bois Ltee Ltd. - 100%	02/10/2019	2.25	20-Dec-2021	\$225.00	\$12.50
115O13	YF59948	AU 258	Coureur des Bois Ltee Ltd. - 100%	02/10/2019	2.25	20-Dec-2021	\$225.00	\$12.50
115O13	YF59949	AU 259	Coureur des Bois Ltee Ltd. - 100%	02/10/2019	2.25	20-Dec-2021	\$225.00	\$12.50

NTS Map	Grant Number	Claim Label	Claim Owner	Claim Expiry Date	Renewal Period (years)	Requested Expiry Date	Assessment work applied	Cost to renew
115O13	YF59950	AU 260	Coureur des Bois Ltee Ltd. - 100%	02/10/2019	2.25	20-Dec-2021	\$225.00	\$12.50
115O13	YF59951	AU 261	Coureur des Bois Ltee Ltd. - 100%	02/10/2019	2.25	20-Dec-2021	\$225.00	\$12.50
115O13	YF59952	AU 262	Coureur des Bois Ltee Ltd. - 100%	02/10/2019	2.25	20-Dec-2021	\$225.00	\$12.50
115O13	YF59953	AU 263	Coureur des Bois Ltee Ltd. - 100%	02/10/2019	2.25	20-Dec-2021	\$225.00	\$12.50
115O13	YF59954	AU 264	Coureur des Bois Ltee Ltd. - 100%	02/10/2019	2.25	20-Dec-2021	\$225.00	\$12.50
115O13	YF59955	AU 265	Coureur des Bois Ltee Ltd. - 100%	02/10/2019	2.25	20-Dec-2021	\$225.00	\$12.50
115O13	YF59956	AU 266	Coureur des Bois Ltee Ltd. - 100%	02/10/2019	2.25	20-Dec-2021	\$225.00	\$12.50
115O13	YF59957	AU 267	Coureur des Bois Ltee Ltd. - 100%	02/10/2019	2.25	20-Dec-2021	\$225.00	\$12.50
115O13	YF59958	AU 268	Coureur des Bois Ltee Ltd. - 100%	02/10/2019	2.25	20-Dec-2021	\$225.00	\$12.50
115O13	YF59959	AU 269	Coureur des Bois Ltee Ltd. - 100%	02/10/2019	2.25	20-Dec-2021	\$225.00	\$12.50
115O13	YF59960	AU 270	Coureur des Bois Ltee Ltd. - 100%	02/10/2019	2.25	20-Dec-2021	\$225.00	\$12.50
115O13	YF59961	AU 271	Coureur des Bois Ltee Ltd. - 100%	02/10/2019	2.25	20-Dec-2021	\$225.00	\$12.50
115O13	YF59962	AU 272	Coureur des Bois Ltee Ltd. - 100%	02/10/2019	2.25	20-Dec-2021	\$225.00	\$12.50
115O13	YF59963	AU 273	Coureur des Bois Ltee Ltd. - 100%	02/10/2019	2.25	20-Dec-2021	\$225.00	\$12.50
115O13	YF59964	AU 274	Coureur des Bois Ltee Ltd. - 100%	02/10/2019	2.25	20-Dec-2021	\$225.00	\$12.50
115O13	YF59965	AU 275	Coureur des Bois Ltee Ltd. - 100%	02/10/2019	2.25	20-Dec-2021	\$225.00	\$12.50
115O13	YF59966	AU 276	Coureur des Bois Ltee Ltd. - 100%	02/10/2019	2.25	20-Dec-2021	\$225.00	\$12.50
115O13	YF59967	AU 277	Coureur des Bois Ltee Ltd. - 100%	02/10/2019	2.25	20-Dec-2021	\$225.00	\$12.50
115O13	YF59968	AU 278	Coureur des Bois Ltee Ltd. - 100%	02/10/2019	2.25	20-Dec-2021	\$225.00	\$12.50
115O13	YF59969	AU 279	Coureur des Bois Ltee Ltd. - 100%	02/10/2019	2.25	20-Dec-2021	\$225.00	\$12.50
115O13	YF59970	AU 280	Coureur des Bois Ltee Ltd. - 100%	02/10/2019	2.25	20-Dec-2021	\$225.00	\$12.50
115O13	YF59971	AU 281	Coureur des Bois Ltee Ltd. - 100%	02/10/2019	2.25	20-Dec-2021	\$225.00	\$12.50
115O13	YF59972	AU 282	Coureur des Bois Ltee Ltd. - 100%	02/10/2019	2.25	20-Dec-2021	\$225.00	\$12.50
115O13	YF59973	AU 283	Coureur des Bois Ltee Ltd. - 100%	02/10/2019	2.25	20-Dec-2021	\$225.00	\$12.50
115O13	YF59974	AU 284	Coureur des Bois Ltee Ltd. - 100%	02/10/2019	2.25	20-Dec-2021	\$225.00	\$12.50
					271.5		\$27,150.00	\$1,480.00

APPENDIX C- SOIL SAMPLE LOCATION DATA



AU claims
2018 Sample Location Map



Legend

- Au_2018_assays_wpt
- AU_2018_claims



NTS 1150/ 13 and 14, NAD 83 Zone 7

WPT	Lat	Long
1	63.90628	-139.447
2	63.90677	-139.448
3	63.90726	-139.449
4	63.90775	-139.45
5	63.90824	-139.452
6	63.90873	-139.453
7	63.90922	-139.454
8	63.90971	-139.455
9	63.9102	-139.456
10	63.91069	-139.457
11	63.91118	-139.458
12	63.91167	-139.459
13	63.91217	-139.46
14	63.91266	-139.461
15	63.91315	-139.462
16	63.91364	-139.463
17	63.91413	-139.464
18	63.91462	-139.465
19	63.91511	-139.466
20	63.9156	-139.467
21	63.91609	-139.468
22	63.91658	-139.469
23	63.91707	-139.47
24	63.91756	-139.471
25	63.91534	-139.479
26	63.91583	-139.48
27	63.91632	-139.481
28	63.91681	-139.482
29	63.9173	-139.483
30	63.9178	-139.484
31	63.91829	-139.485
32	63.91878	-139.486
33	63.91927	-139.487
34	63.91976	-139.488
35	63.92025	-139.49
36	63.92074	-139.491
37	63.92123	-139.492
38	63.92172	-139.493
39	63.92221	-139.494
40	63.9227	-139.495
41	63.90443	-139.452

WPT	Lat	Long
42	63.90493	-139.453
43	63.90542	-139.454
44	63.90591	-139.455
45	63.9064	-139.456
46	63.90689	-139.457
47	63.90738	-139.458
48	63.90787	-139.459
49	63.90836	-139.46
50	63.90885	-139.461
51	63.90934	-139.462
52	63.90983	-139.463
53	63.91032	-139.464
54	63.91081	-139.465
55	63.9113	-139.466
56	63.9118	-139.467
57	63.91229	-139.469
58	63.91278	-139.47
59	63.91327	-139.471
60	63.91376	-139.472
61	63.91425	-139.473
62	63.90351	-139.454
63	63.904	-139.455
64	63.90449	-139.456
65	63.90498	-139.457
66	63.90548	-139.458
67	63.90597	-139.459
68	63.90646	-139.46
69	63.90695	-139.461
70	63.90744	-139.462
71	63.90793	-139.463
72	63.90842	-139.464
73	63.90891	-139.466
74	63.9094	-139.467
75	63.90989	-139.468
76	63.91038	-139.469
77	63.91087	-139.47
78	63.91136	-139.471
79	63.91186	-139.472
80	63.91235	-139.473
81	63.91284	-139.474
82	63.91333	-139.475

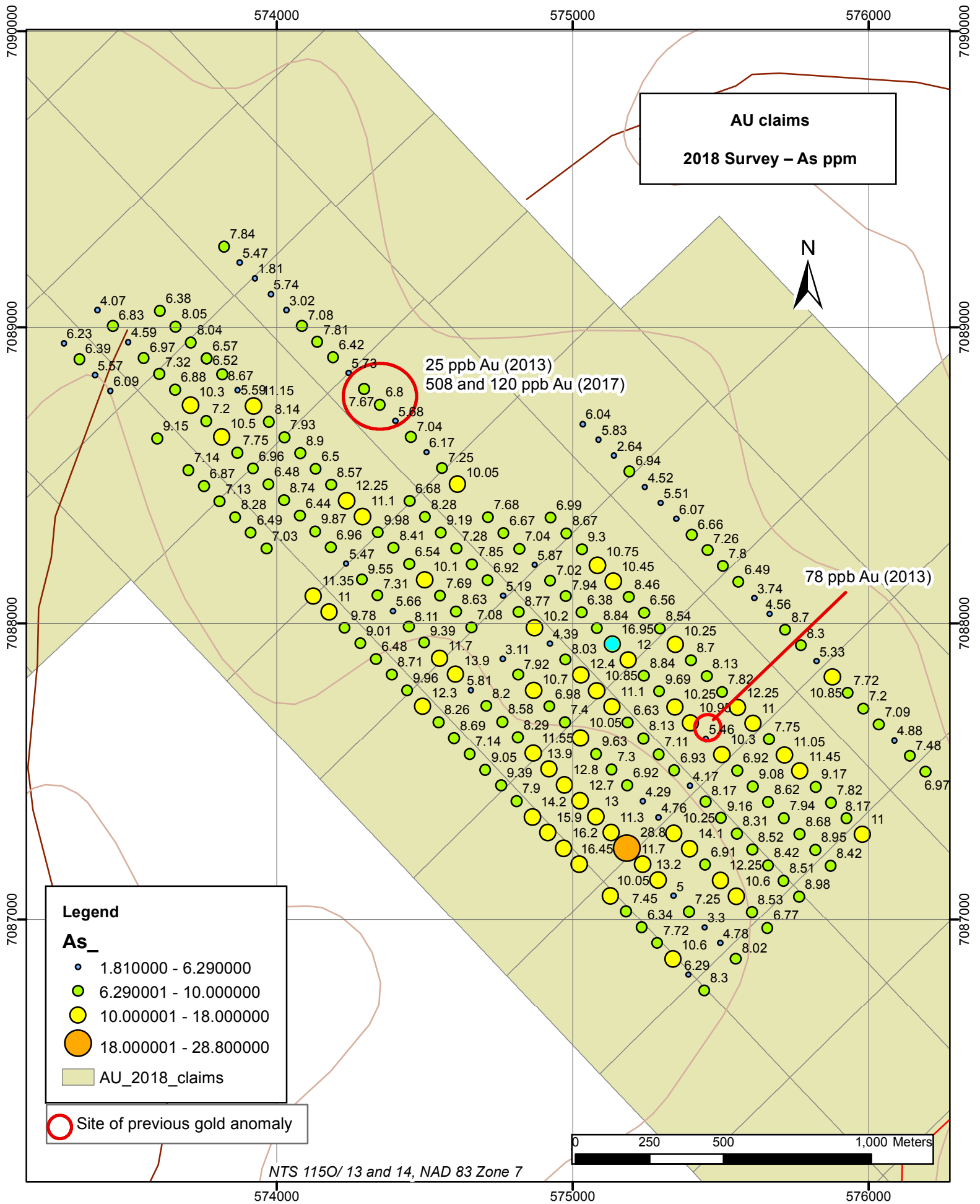
WPT	Lat	Long
83	63.91382	-139.476
84	63.91431	-139.477
85	63.90259	-139.456
86	63.90308	-139.457
87	63.90357	-139.458
88	63.90406	-139.459
89	63.90455	-139.46
90	63.90504	-139.461
91	63.90554	-139.463
92	63.90603	-139.464
93	63.90652	-139.465
94	63.90701	-139.466
95	63.9075	-139.467
96	63.90799	-139.468
97	63.90848	-139.469
98	63.90897	-139.47
99	63.90946	-139.471
100	63.90995	-139.472
101	63.91044	-139.473
102	63.91093	-139.474
103	63.91142	-139.475
104	63.91192	-139.476
105	63.9124	-139.477
106	63.9129	-139.478
107	63.91339	-139.479
108	63.91388	-139.48
109	63.91437	-139.481
110	63.91486	-139.482
111	63.90167	-139.458
112	63.90216	-139.46
113	63.90265	-139.461
114	63.90314	-139.462
115	63.90363	-139.463
116	63.90412	-139.464
117	63.90461	-139.465
118	63.9051	-139.466
119	63.9056	-139.467
120	63.90609	-139.468
121	63.90658	-139.469
122	63.90707	-139.47
123	63.90756	-139.471

WPT	Lat	Long
124	63.90805	-139.472
125	63.90854	-139.473
126	63.90903	-139.474
127	63.90952	-139.475
128	63.91001	-139.476
129	63.9105	-139.477
130	63.91099	-139.478
131	63.91148	-139.479
132	63.91197	-139.48
133	63.91246	-139.481
134	63.91295	-139.483
135	63.91345	-139.484
136	63.91394	-139.485
137	63.91443	-139.486
138	63.91492	-139.487
139	63.91541	-139.488
140	63.9159	-139.489
141	63.91639	-139.49
142	63.91688	-139.491
143	63.91737	-139.492
144	63.91786	-139.493
145	63.91835	-139.494
146	63.91884	-139.495
147	63.91933	-139.496
148	63.91982	-139.497
149	63.92031	-139.498
150	63.9208	-139.499
151	63.90075	-139.461
152	63.90124	-139.462
153	63.90173	-139.463
154	63.90222	-139.464
155	63.90271	-139.465
156	63.9032	-139.466
157	63.90369	-139.467
158	63.90418	-139.468
159	63.90467	-139.469
160	63.90517	-139.47

WPT	Lat	Long
161	63.90566	-139.471
162	63.90615	-139.472
163	63.90664	-139.473
164	63.90713	-139.474
165	63.90762	-139.475
166	63.90811	-139.476
167	63.9086	-139.477
168	63.90909	-139.478
169	63.90958	-139.48
170	63.91007	-139.481
171	63.91056	-139.482
172	63.91105	-139.483
173	63.91154	-139.484
174	63.91203	-139.485
175	63.91252	-139.486
176	63.91301	-139.487
177	63.91351	-139.488
178	63.914	-139.489
179	63.91449	-139.49
180	63.91498	-139.491
181	63.91547	-139.492
182	63.91596	-139.493
183	63.91645	-139.494
184	63.91694	-139.495
185	63.91743	-139.496
186	63.91792	-139.497
187	63.91841	-139.498
188	63.9189	-139.499
189	63.91939	-139.5
190	63.91988	-139.502
191	63.92038	-139.503
192	63.92087	-139.504
193	63.89982	-139.463
194	63.90031	-139.464
195	63.9008	-139.465
196	63.90129	-139.466
197	63.90178	-139.467

WPT	Lat	Long
198	63.90227	-139.468
199	63.90276	-139.469
200	63.90325	-139.47
201	63.90374	-139.471
202	63.90423	-139.472
203	63.90472	-139.473
204	63.9052	-139.474
205	63.90569	-139.476
206	63.90618	-139.477
207	63.90667	-139.478
208	63.90716	-139.479
209	63.90765	-139.48
210	63.90814	-139.481
211	63.90863	-139.482
212	63.90912	-139.483
213	63.90961	-139.484
214	63.91009	-139.485
215	63.91058	-139.486
216	63.91107	-139.487
217	63.91156	-139.488
218	63.91205	-139.489
219	63.91254	-139.49
220	63.91303	-139.491
221	63.91352	-139.492
222	63.91401	-139.493
223	63.91449	-139.494
224	63.91498	-139.495
225	63.91547	-139.497
226	63.91596	-139.498
227	63.91645	-139.499
228	63.91694	-139.5
229	63.91743	-139.501
230	63.91792	-139.502
231	63.91841	-139.503
232	63.9189	-139.504
233	63.9194	-139.505
234	63.91989	-139.506

APPENDIX D- SOIL GEOCHEMISTRY



AU claims
2018 Survey - As ppm



25 ppb Au (2013)
 508 and 120 ppb Au (2017)

78 ppb Au (2013)

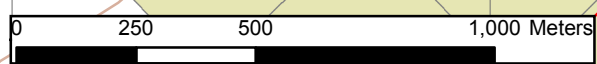
Legend

As_

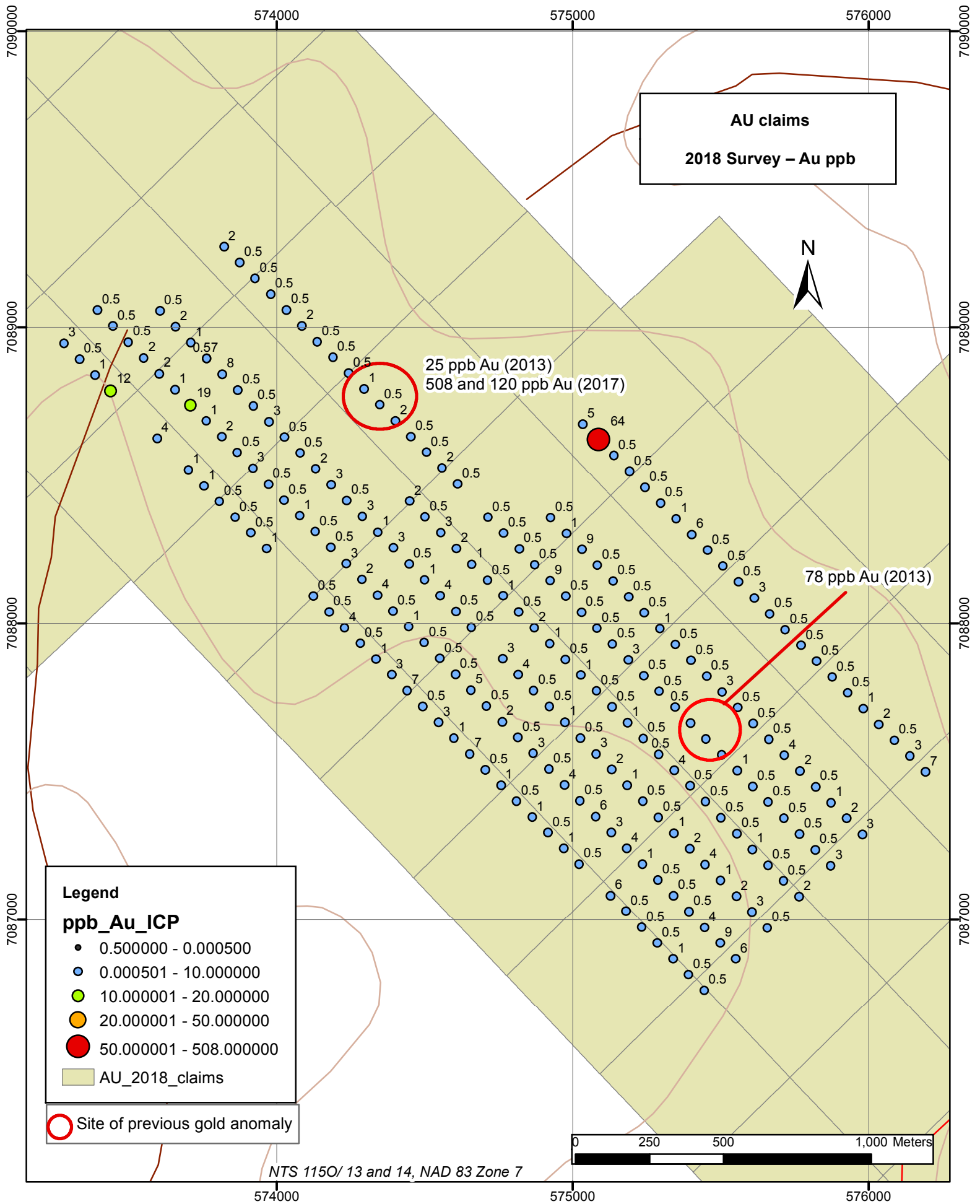
- 1.810000 - 6.290000
- 6.290001 - 10.000000
- 10.000001 - 18.000000
- 18.000001 - 28.800000

■ AU_2018_claims

○ Site of previous gold anomaly



NTS 1150/ 13 and 14, NAD 83 Zone 7



AU claims
2018 Survey – Au ppb



25 ppb Au (2013)
 508 and 120 ppb Au (2017)

78 ppb Au (2013)

Legend

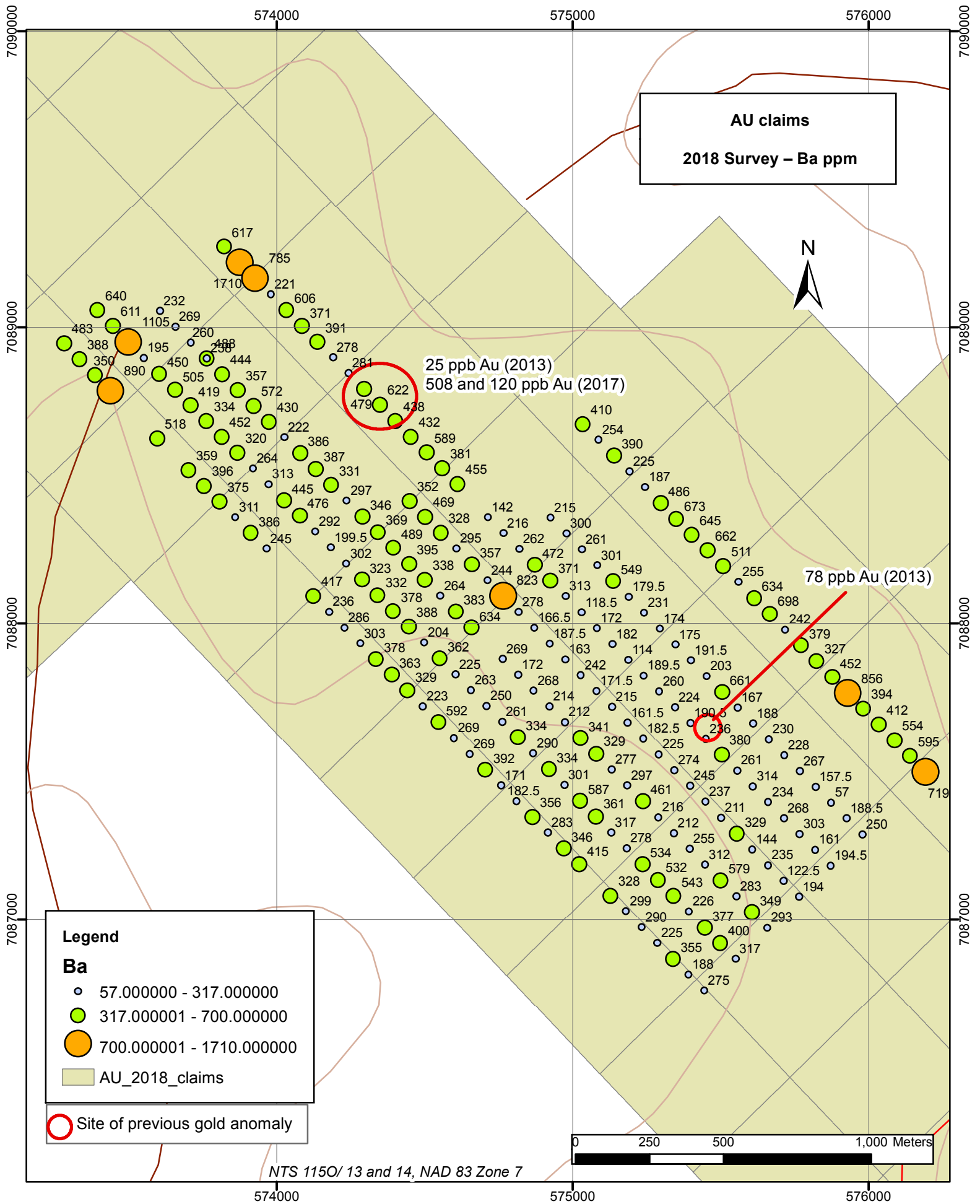
ppb_Au_ICP

- 0.500000 - 0.000500
- 0.000501 - 10.000000
- 10.000001 - 20.000000
- 20.000001 - 50.000000
- 50.000001 - 508.000000
- AU_2018_claims

○ Site of previous gold anomaly



NTS 1150/ 13 and 14, NAD 83 Zone 7



AU claims
2018 Survey – Ba ppm



25 ppb Au (2013)
 508 and 120 ppb Au (2017)

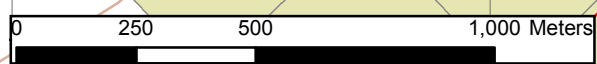
78 ppb Au (2013)

Legend

Ba

- 57.000000 - 317.000000
- 317.000001 - 700.000000
- 700.000001 - 1710.000000
- AU_2018_claims

○ Site of previous gold anomaly



NTS 1150/ 13 and 14, NAD 83 Zone 7

574000

575000

576000

7090000

7089000

7088000

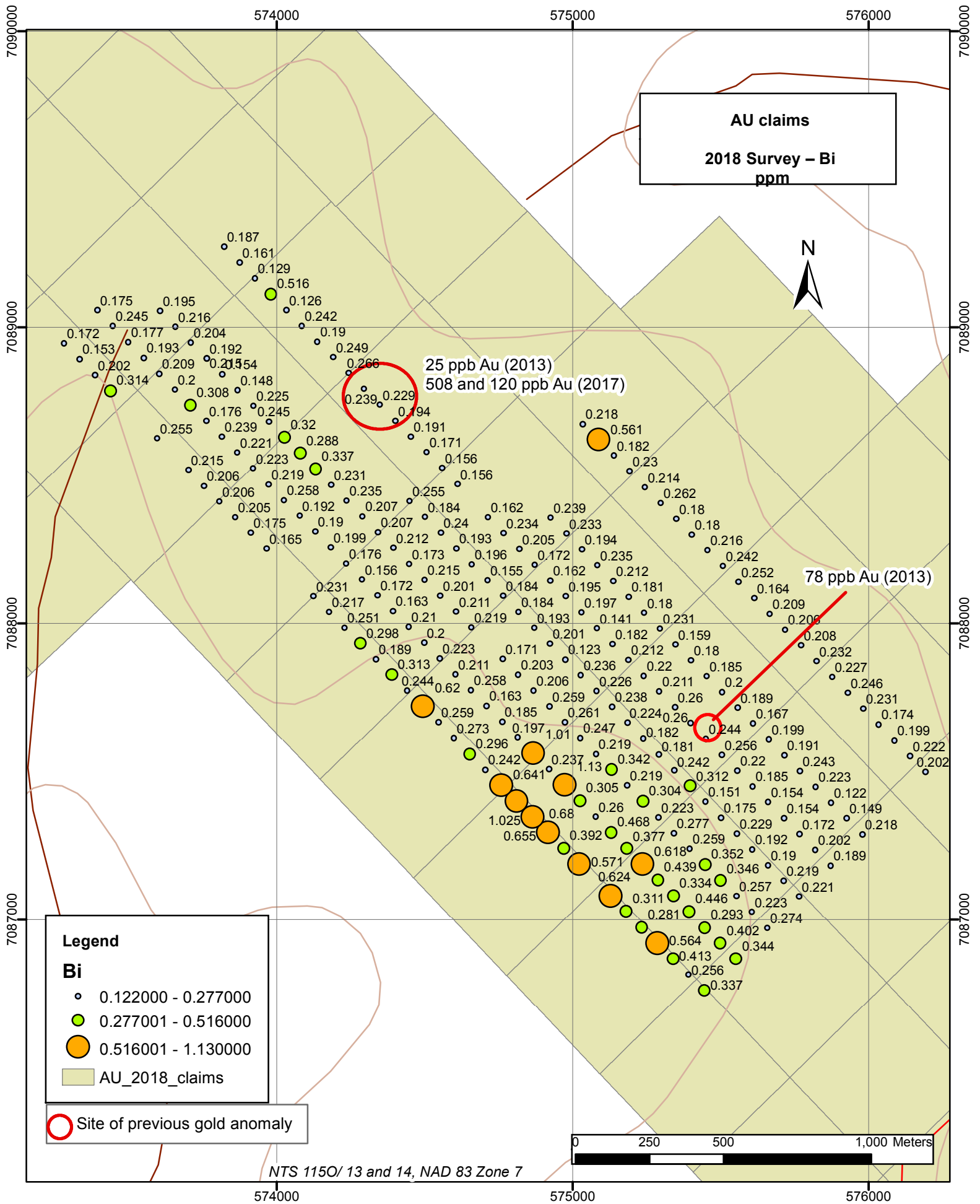
7087000

7090000

7089000

7088000

7087000



574000

575000

576000

7090000

7090000

7089000

7089000

7088000

7088000

7087000

7087000

574000

575000

576000

AU claims

**2018 Survey – Bi
ppm**

N

25 ppb Au (2013)
508 and 120 ppb Au (2017)

78 ppb Au (2013)

Legend

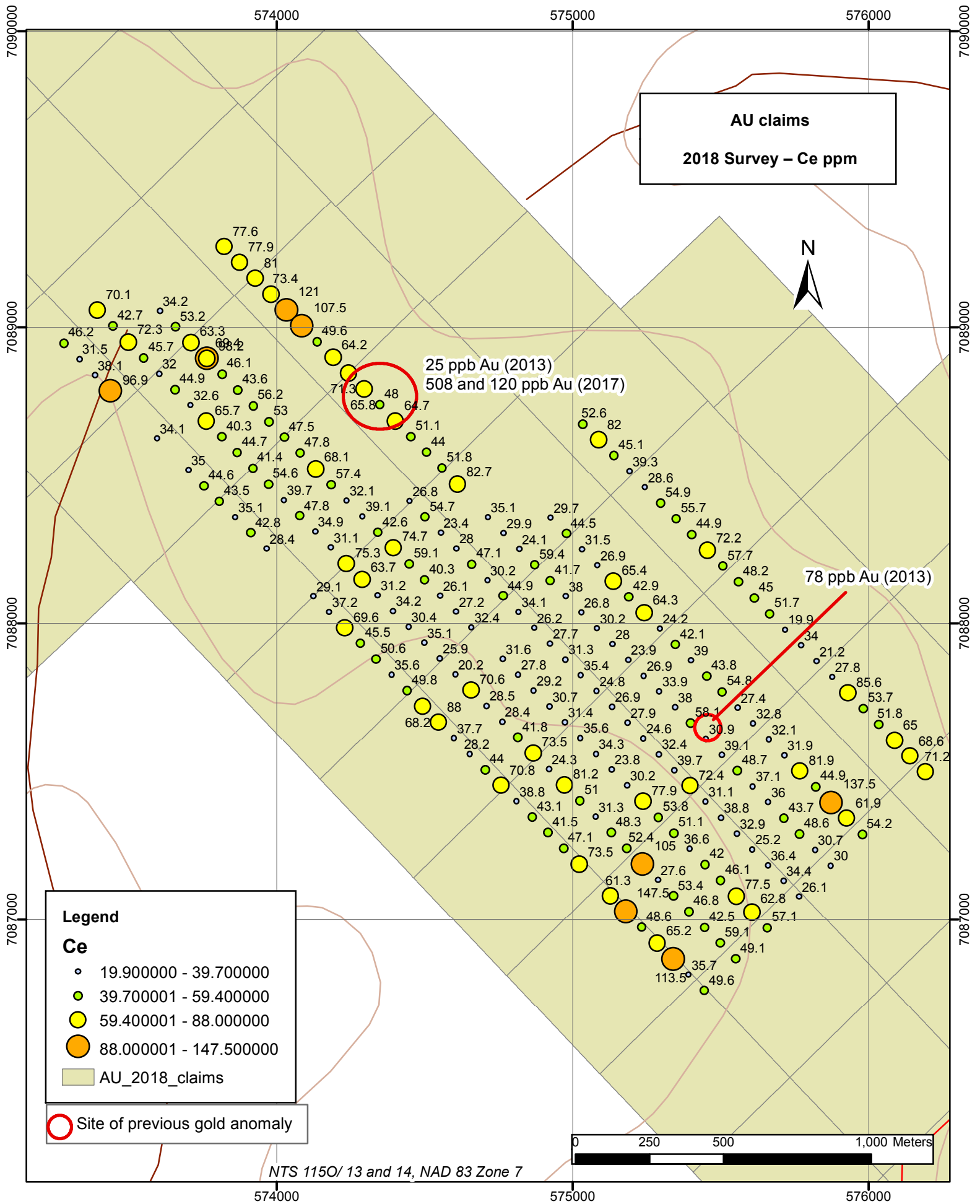
Bi

- 0.122000 - 0.277000
- 0.277001 - 0.516000
- 0.516001 - 1.130000
- AU_2018_claims

○ Site of previous gold anomaly

NTS 1150/ 13 and 14, NAD 83 Zone 7

0 250 500 1,000 Meters



AU claims
2018 Survey – Ce ppm



25 ppb Au (2013)
508 and 120 ppb Au (2017)

78 ppb Au (2013)

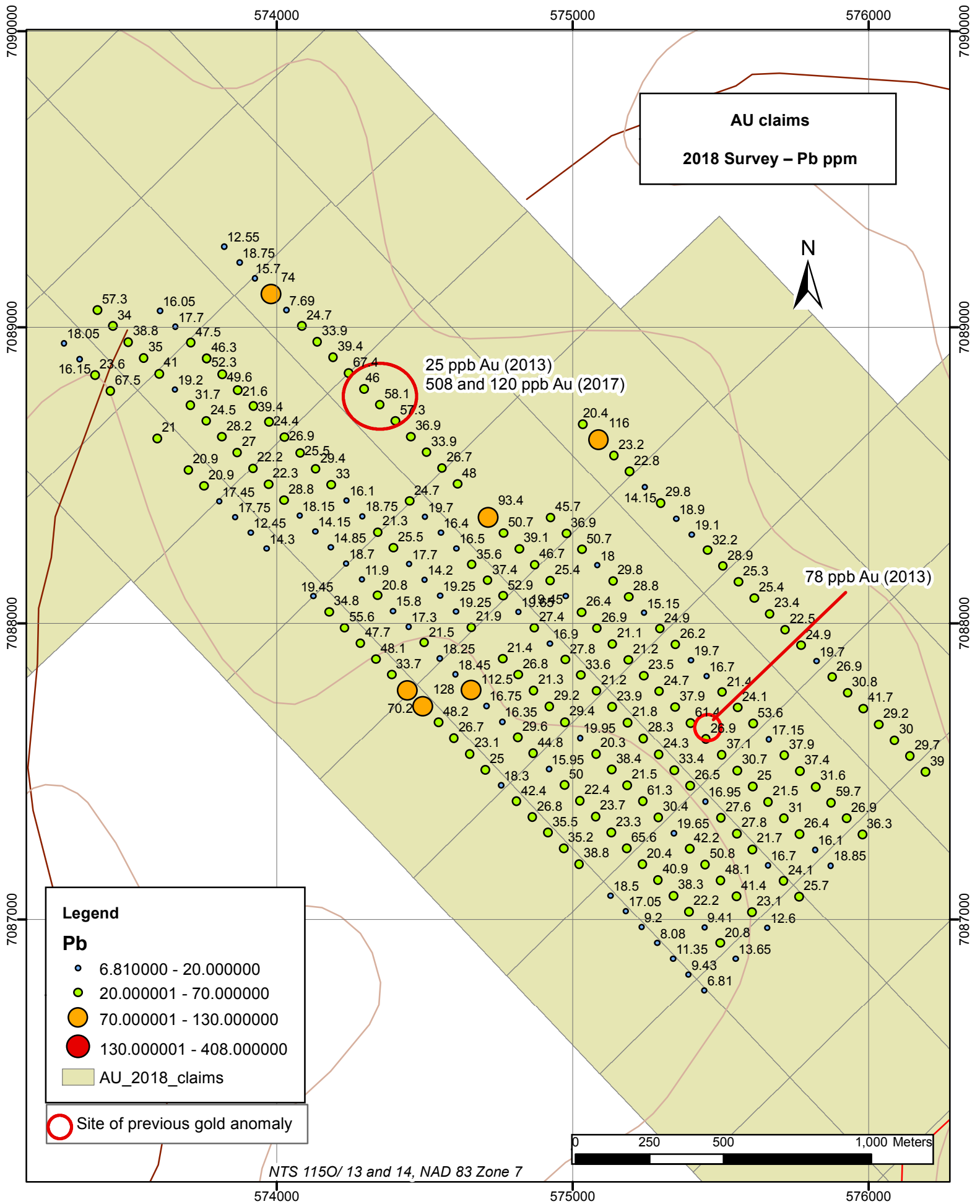
Legend
Ce

- 19.900000 - 39.700000
- 39.700001 - 59.400000
- 59.400001 - 88.000000
- 88.000001 - 147.500000
- AU_2018_claims

○ Site of previous gold anomaly



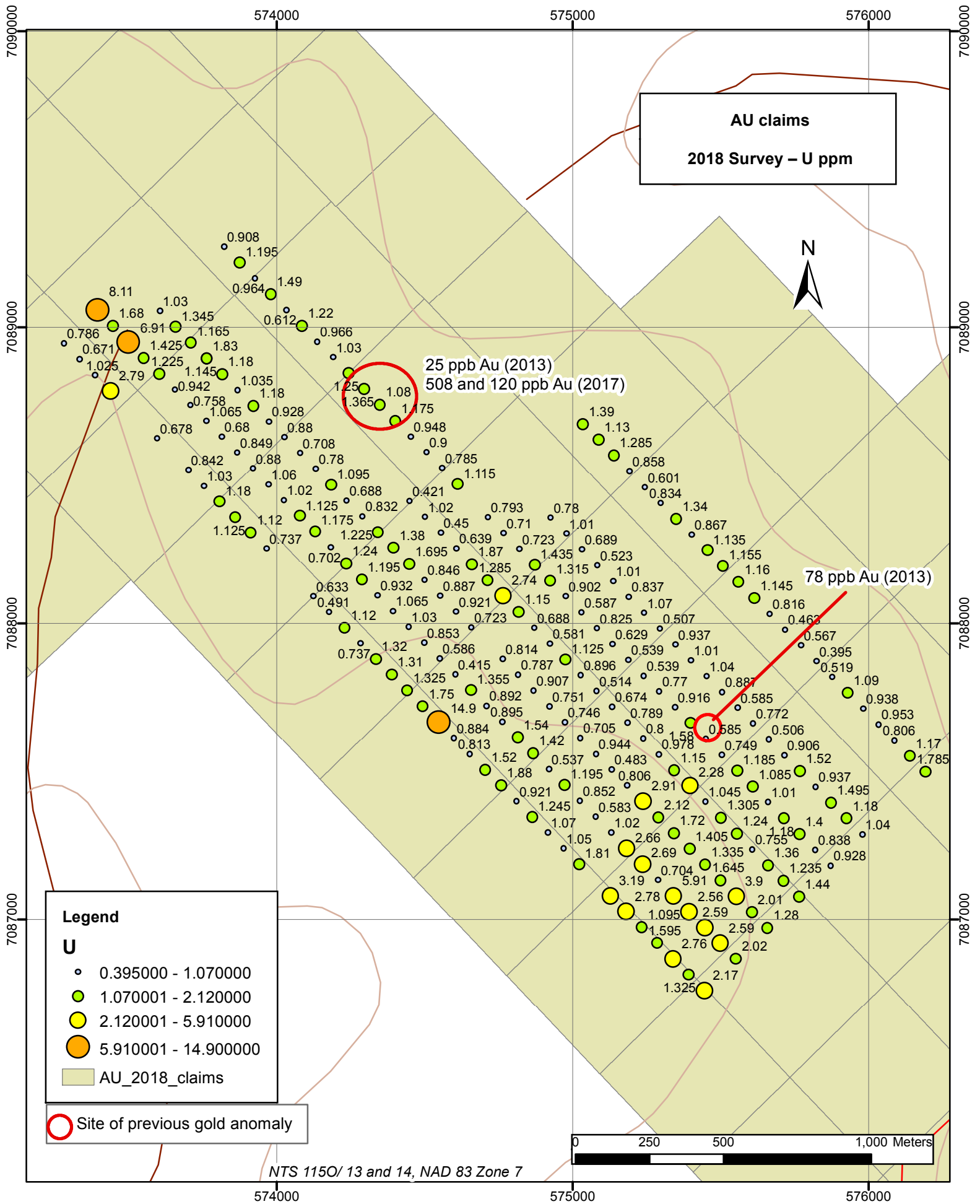
NTS 1150/ 13 and 14, NAD 83 Zone 7



25 ppb Au (2013)
508 and 120 ppb Au (2017)

78 ppb Au (2013)





7090000
7089000
7088000
7087000

574000

575000

576000

7090000
7089000
7088000
7087000

AU claims
2018 Survey – U ppm



25 ppb Au (2013)
508 and 120 ppb Au (2017)

78 ppb Au (2013)

Legend

U

- 0.395000 - 1.070000
- 1.070001 - 2.120000
- 2.120001 - 5.910000
- 5.910001 - 14.900000
- AU_2018_claims

○ Site of previous gold anomaly

0 250 500 1,000 Meters

NTS 1150/ 13 and 14, NAD 83 Zone 7

574000

575000

576000

APPENDIX E- STATEMENT OF EXPENDITURES

AU claims - Statement of Expenditures October 2018
Dawson Mining District, 1150/ 13 and 14

Fieldwork: October 2 and 4, demob October 5, 2018.
Sample management and shipping: October 6, 2018
Total: 19 pers-days
including demob 1 day (mob cost assigned to other project)

Wages: 19 pers-days	\$5,700.00
Room and board and extra food:	\$3,258.35
Truck (5.5 x \$100/day):	\$550.00
Fuel:	\$710.47
Assays (234 samples):	\$15,086.83
Data management, geology, report:	\$1,890.00
	TOTAL: \$27,195.65

Based on information supplied by Coureur des Bois

See attached for detailed breakdown of field expenses and receipts

signed: Danièle Héon, P. Geo

Whitehorse, December 19, 2018

APPENDIX F- ASSAY CERTIFICATES

See Data Folder for Secured Assay Certificates