

**Hard-Rock Assessment
Renewal Report for Work Filed:**

**Work Completed on claims: TRI1(YE77787) and TRI2(YE77788)
Renewal Application ~ September 2, 2017**

**For work to applied to:
Quartz Claims: TRI 1 – TRI 11
(YE77787 – YE77797)**

Group# HD03463

Map# 115 O14

Geological – Geochemical Work
Assay analysis of prospected bedrock, exposed by placer mining.

**Dawson City Mining District
Trilby Gulch, Hunker Creek Tributary**

**UTM to Access Zone 7, Nad83 – Klondike Highway and Hunker Creek Road
597950/ 7096660**

**Ownership of Quartz Claim Grouping:
Donald Ruman 100%**

Report written by: Erini Petroutsas

**Purpose to locate, identify and map stripped to hard-rock abandoned placer exposures
of bedrock along the exposed fault that crosses Trilby Gulch.**

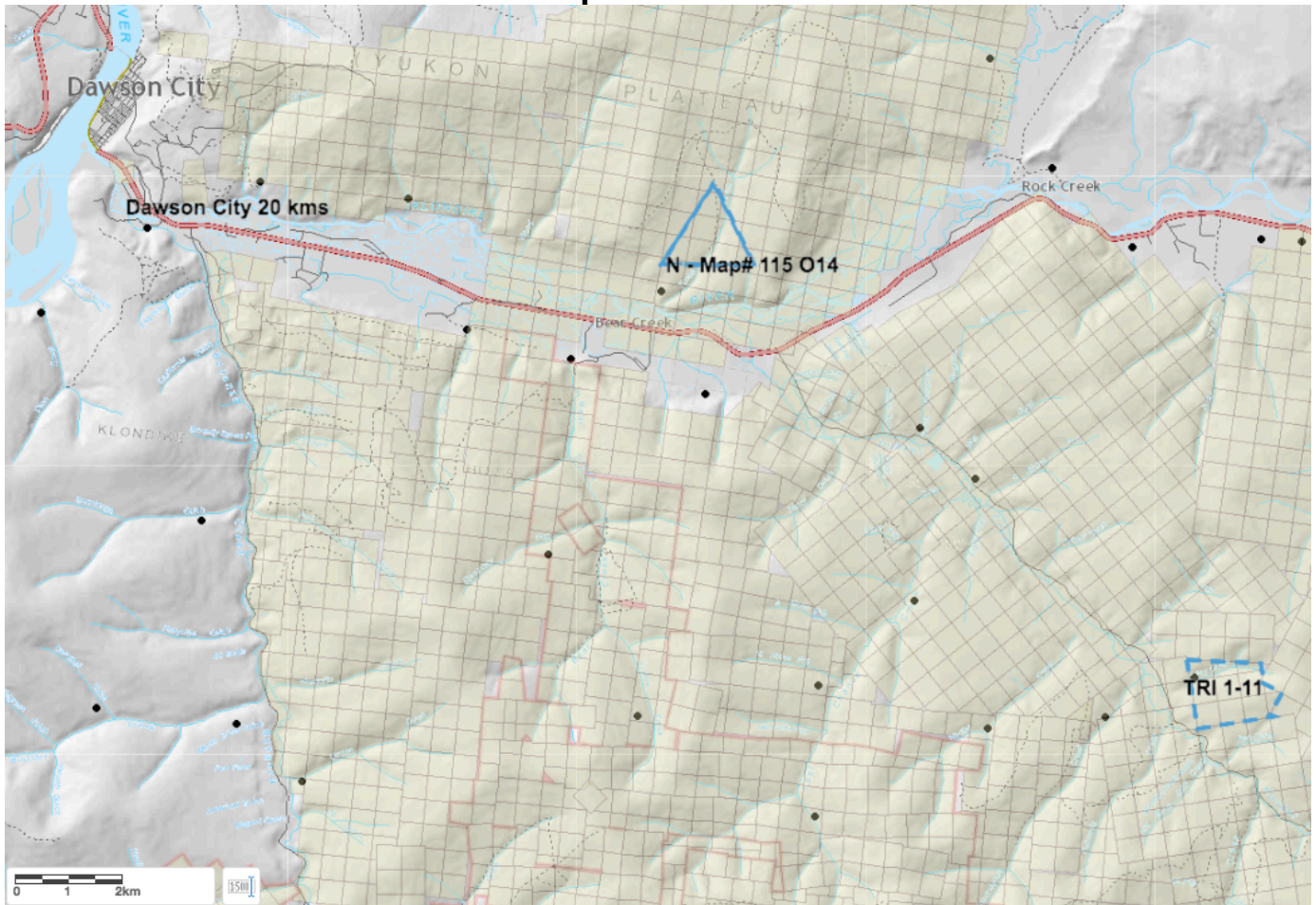
Table of Contents	Page
<u>Location, Vegetation and Access</u>	3
<u>Previous Exploration & Mining History</u>	3
<u>Prospecting and Sample Locations October 2016</u> Geology	5
<u>Assay Sample Locations</u> <u>Sample Descriptions</u> Sample Locations & Geology Described with this report.	6
Assay Results	7
<u>Interpretation of Results</u> Sample Data	8
<u>Conclusion & Recommendations</u> Statement of Qualifications Expenses	
Assay Certificate	9

Location, Vegetation and Access

Claims are accessed 20km from Dawson City along Klondike Highway and Hunker Creek Road. Old exploration road leads up Trilby Gulch to access hard-rock group "TRI". Hard-rock outcrops visible as area has been previously strip-tested by placer exploration. Spruce and birch on ascending north hillside. Moss and shrub vegetation on south –east ascending hill with white-channel exposed on the plateau, "Trilby Hill" southern corner of claims group.

Trilby Gulch is a north-east tributary of Hunker Creek, the second largest official producer of recorded placer gold in the Yukon with 230,000 ounces worth of government royalty payments made between 1978 and 2003, (Bill Lebarge, Yukon Government Geology 2004).

Map# 115 O14



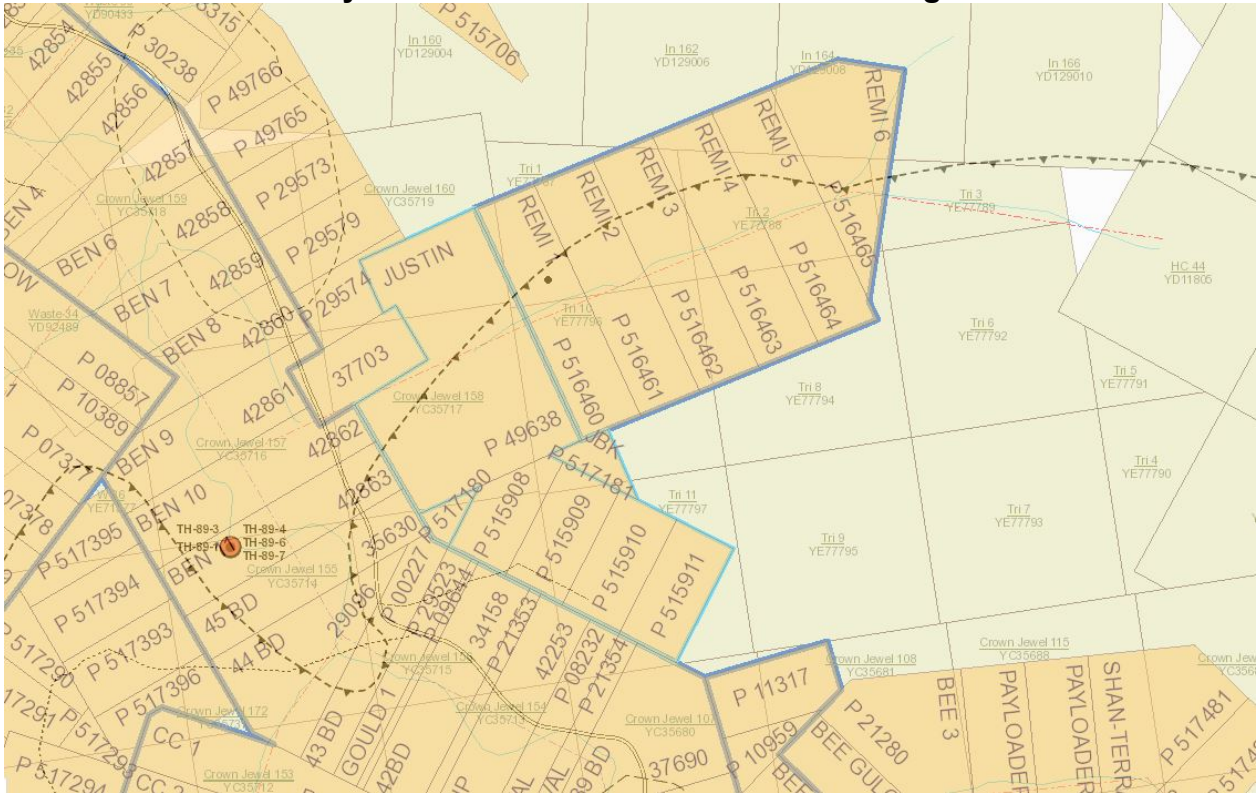
Previous Exploration & Mining History

Mouth of Tinhorn Gulch at Hunker, 2 km NW of Trilby was drill tested by United Keno Ltd. in 1989, results were unsuccessful for the hard-rock drill tests as ground water and heavily gouged clay impeded reaching target depths. Highest assay result from drill testing into bedrock was 0.016 ounce/ton. HUN88-3; 200' deep; Bench of Tinhorn Gulch. (E.M.R. Library call# 092786)

Barramundi held the claims (1997), but did not perform assay sampling on any of Hunkers north tributaries.

Placer exploration work was done during 2015 (open call #YEIP 2015-086) by Bernie Kreft over an area of white channel bench deposit known as "Trilby Hill" on current quartz claim TRI 11.

Trilby Creek Current Quartz and Placer Targets



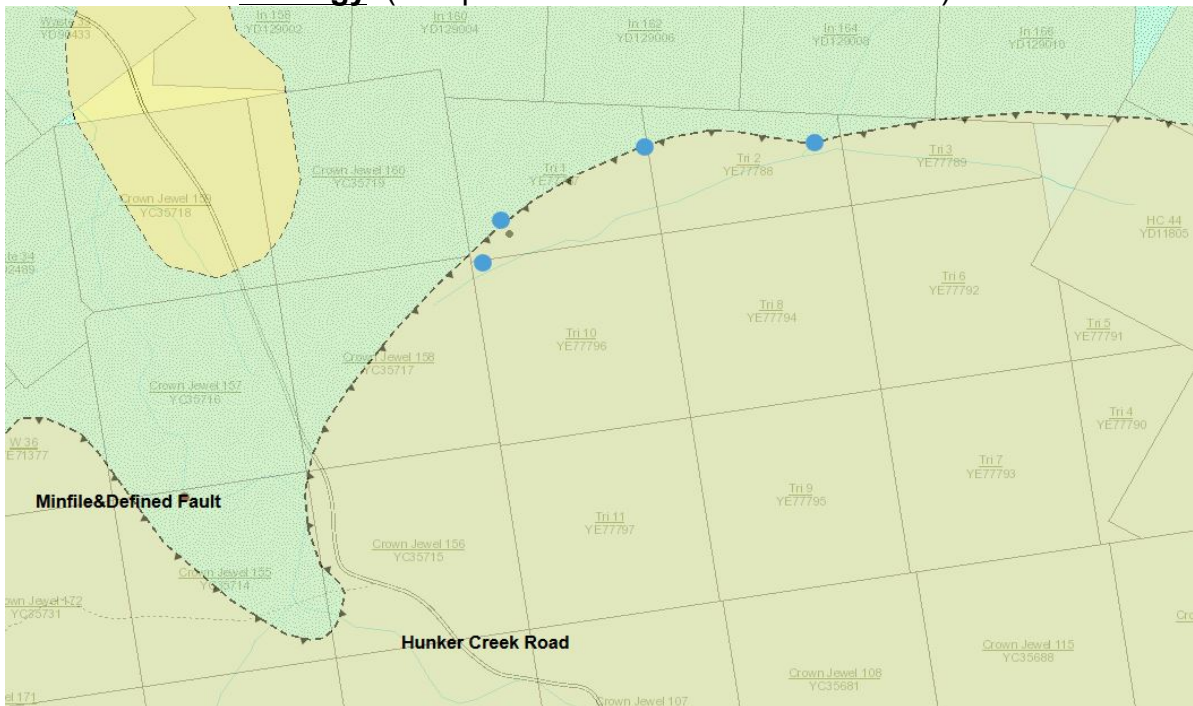
Excerpt from Bernie Kreft 2015 Placer Report on Trilby Hill



“Trilby Hill” Southern Bench Strip
Image of Trilby Hill and Creek (Prospected Locations: Blue Dots).



Geology (Prospected Locations 2017: Blue Dots).



Area is underlain by fault altered Nassina Subterrene and Klondike Schist:

YTNA ~ Nassina Subterrane (Blue/Turquoise): Metamorphosed early to mid-Paleozoic continental margin with superposed Devonian & Mississippian arc volcanic and YTp (plutonic) rocks. As well as **DMF3: FINLAYSON** Dark grey to black carbonaceous metasedimentary rocks. Contacting on South-East with:

PK1 package ~ **Klondike Schist** (Green/Beige): Quartz-muscovite-chlorite. (PK2): Sericite-chlorite quartz phyllite, micaceous quartzite. **RANGE** Dark green to black basalt, greenstone, locally pillowed. Mafic schists. North-west of the claims group an intrusive plug of granite and rhyolite covers the ascending hillside.

Assay Sample Locations:

Sample Name	Zone		Datum	121, Nad84	Sample Type
REM1	07	V	0597979	7096680	Rock Assayed
REM2	07	V	0598005	7096786	Rock Assayed
R3	07	V	0598317	7097009	Rock Study
R4	07	V	0598707	7097042	Rock Study

Assay Sample Descriptions

Specific attention was given to assay analyze two similar “black schist” or fault-altered bedrock sites with hard graphite like material outcropping (REM1 and REM2). Run through with networking quartz veinlets up to 10cm wide that have red-orange oxidation throughout the clear white quartz. Small pyrite flecks visible in both samples.

“Graphite” has weight but does not leave streak.

Two individual chip samples taken from locations 100m from each other were selected for assay by Erini Petroustas. Chipped over 1m and delivered sealed and intact to laboratory in Whitehorse. Rocks were assayed by Bureau Veritas; Crushed(>90%), split & pulverized 1kg to 150mesh. 50g lead collection fire assay by ICP analysis was performed as well as 4 Acid digestion ICP-ES/ICP-MS.

Same General Rock Type (Example) Observed at both REM1 and REM2 Sample Locations.



Assay Sample Locations



Assay Results

Bureau Veritas Commodities Canada Final Report																								
Client:	Petroutsas, Erini																							
File Created:	29-Jan-2018																							
Job Number:	WHI17001091																							
Number of Samples:	2																							
Project:	REMI																							
Shipment ID:																								
P.O. Number:																								
Received:	23-Oct-2017																							
	Method	WGHT	FA350	FA350	FA350	MA270	MA270	MA270	MA270	MA270	MA270	MA270	MA270	MA270	MA270	MA270	MA270	MA270	MA270	MA270	MA270	MA270		
	Analyte	Wgt	Au	Pt	Pd	Mo	Cu	Pb	Zn	Ag	Ni	Co	Mn	Fe	As	U	Th	Sr	Cd	Sb	Bi	V	Ca	P
	Unit	KG	PPB	PPB	PPB	PPM	PPM	PPM	PPM	PPM	PPM	PPM	PPM	%	PPM	PPM	PPM	PPM	PPM	PPM	PPM	PPM	%	%
	MDL	0.01	2	3	2	0.5	0.5	0.5	5	0.5	0.5	1	5	0.01	5	0.5	0.5	5	0.5	0.5	0.5	10	0.01	0.01
Sample	Type																							
REM1	Rock	1.12	12	<3	8	37.2	124.9	24.0	267	1.1	64.1	12	1878	4.26	20	6.8	8.5	45	2.0	1.2	<0.5	294	0.20	0.11
REM2	Rock	3.05	16	<3	4	38.4	31.2	26.5	175	0.9	15.1	3	293	3.16	6	3.3	5.9	35	0.6	0.6	<0.5	418	0.11	0.06

Bureau Veritas Commodities Canada Final Report																								
	Method	WGHT	MA270	MA270	MA270	MA270	MA270	MA270	MA270	MA270	MA270	MA270	MA270	MA270	MA270	MA270	MA270	MA270	MA270	MA270	MA270	MA270	MA270	
	Analyte	Wgt	La	Cr	Mg	Ba	Ti	Al	Na	K	W	Zr	Ce	Sn	Y	Nb	Ta	Be	Sc	Li	S	Rb	Hf	Se
	Unit	KG	PPM	PPM	%	PPM	%	%	%	%	PPM	PPM	PPM	PPM	PPM	PPM	PPM	PPM	PPM	PPM	%	PPM	PPM	PPM
	MDL	0.01	0.5	1	0.01	5	0.001	0.01	0.01	0.01	0.5	0.5	5	0.5	0.5	0.5	5	1	0.5	0.05	0.5	0.5	5	
Sample	Type																							
REM1	Rock	1.12	27.6	69	0.76	1553	0.120	4.96	0.31	1.80	1.3	47.3	47	1.8	10.0	3.0	<0.5	<5	11	24.6	0.07	77.9	1.1	6
REM2	Rock	3.05	22.0	69	0.58	1754	0.119	4.20	0.08	2.02	1.7	52.3	38	2.1	5.6	2.8	<0.5	<5	11	12.9	0.06	86.2	1.2	<5

Interpretation of Results

Trace gold in both samples was less than expected considering the assayed sample weights. Of interest is **REM1** with a **124.9 gram/ton copper** result. **1.1 gram/ton silver; 12 gram/ton cobalt; 64 gram/ton nickel; 6.8 gram/ton uranium; 24.6 gram/ton lithium; 47 gram/ton cerium** and **1.3 gram/ton tungsten**. As well as **lanthanum, rubidium** and **chromium** in anomalous amounts.

REM2 assayed **31.2 gram/ton copper; 22 gram/ton lanthanum; 69 gram/ton chromium; 1.7 gram/ton tungsten; 38 gram/ton cerium** and **86 gram/ton rubidium**.

Conclusion & Recommendations

Further excavation to expose more of the lithology along Yukon Geological Surveys defined contact/fault that runs through Trilby Gulch is recommended. Based on results from the two bedrock bulk samples that were assayed, there should be a more detailed assay sample program implemented to further research potential for gold, copper, cobalt and nickel, as well as other rare earth minerals.

Statement of Qualifications

Erini Petroutsas:

Has been employed 13 consecutive summers in the Dawson area as a gold prospector in the field and as geo-tech for drilling projects. Employment experiences have included being assistant to: Joanna Hodge PhD Geology; Erin O'Brian Masters Geology; Ken Galambos Geologist; Chris Ash Masters Ultramafic Geology; Kevin Brewer MBA & P.Geo. Bohumil Molak PhD & P.Geo. References can be requested from any of the above professionals.

Expenses

Expenses - TRI Quartz Claims			
September 2, 2017			
Date 2017	Work Detail	YMIP Rates	Total
September 2nd	Rock Sampling of Available Outcrop	\$350/day	\$350
	Erini Petroutsas prospecting a YGS surveyed fault line on NW side of Trilby.		
	Truck to access group	\$50/day	
	ATV used on existing trail	\$40/day	
	Field Exense	\$50/day	\$140
	2 bulk chip samples selected from outcrop for	(\$250 each)	
	Assay Analysis: Prep	\$50	
	Multi-Acid ICP-ES 34 element	\$100	
	Metallic Screen Fire Assay	\$100	\$500
	See Attached Acme Invoice - Full Wgt	Bulk Samples Assayed	
	Report Writing (10% of Cost)		\$150
Total Expenditure "Tri" Quartz Claims 2017:			\$1,140

*Two 1kg bulk chip samples were selected, to assay full weights with 2 methods.



BUREAU VERITAS MINERAL LABORATORIES
Canada

www.bureauveritas.com/um

Bureau Veritas Commodities Canada Ltd.
9050 Shaughnessy St Vancouver British Columbia V6P 6E5 Canada
PHONE (604) 253-3158

Client: **Petroutsas, Erini**
Box 431
Dawson City Yukon Y0B 1G0 Canada

Submitted By: Erini Petroutsas
Receiving Lab: Canada-Whitehorse
Received: October 23, 2017
Report Date: January 29, 2018
Page: 1 of 2

CERTIFICATE OF ANALYSIS

WHI17001091.1

CLIENT JOB INFORMATION

Project: REMI
Shipment ID:
P.O. Number
Number of Samples: 2

SAMPLE PREPARATION AND ANALYTICAL PROCEDURES

Procedure Code	Number of Samples	Code Description	Test Wgt (g)	Report Status	Lab
PRP90-1KG	2	Crush (>90%), split and pulverize 1kg to 150mesh			WHI
FA350	2	50g lead collection fire assay analysis by ICP	50	Completed	VAN
EN002	2	Environmental disposal charge-Fire assay lead waste			VAN
MA270	2	4 Acid digestion - ICP-ES/ICP-MS analysis	0.5	Completed	VAN
SHP02	2	Per sample shipping charges for large branch shipments			VAN
BAT01	2	Batch charge of <20 samples			VAN

SAMPLE DISPOSAL

DISP-PLP Dispose of Pulp After 90 days
DISP-RJT Dispose of Reject After 60 days

ADDITIONAL COMMENTS

Bureau Veritas does not accept responsibility for samples left at the laboratory after 90 days without prior written instructions for sample storage or return.

Invoice To: Petroutsas, Erini
Box 431
Dawson City Yukon Y0B 1G0
Canada



CC:

Client: **Petroutsas, Erini**
Box 431
Dawson City Yukon Y0B 1G0 Canada

Project: REMI
Report Date: January 29, 2018

Page: 2 of 2 Part: 1 of 3



BUREAU VERITAS MINERAL LABORATORIES
Canada

www.bureauveritas.com/um

Bureau Veritas Commodities Canada Ltd.
9050 Shaughnessy St Vancouver British Columbia V6P 6E5 Canada
PHONE (604) 253-3158

CERTIFICATE OF ANALYSIS

WHI17001091.1

Method	WGHT	FA350	FA350	FA350	MA270	MA270	MA270	MA270	MA270	MA270	MA270	MA270	MA270	MA270	MA270	MA270	MA270	MA270	MA270	MA270	MA270
Analyte	Wgt	Au	Pt	Pd	Mo	Cu	Pb	Zn	Ag	Ni	Co	Mn	Fe	As	U	Th	Sr	Cd	Sb	Bi	
Unit	kg	ppb	ppb	ppb	ppm	ppm	ppm	ppm	ppm	ppm	ppm	ppm	%	ppm	ppm	ppm	ppm	ppm	ppm	ppm	
MDL	0.01	2	3	2	0.5	0.5	0.5	5	0.5	0.5	1	5	0.01	5	0.5	5	0.5	0.5	0.5	0.5	
REM1	Rock	1.12	12	<3	8	37.2	124.9	24.0	267	1.1	64.1	12	1878	4.26	20	6.8	8.5	45	2.0	1.2	<0.5
REM2	Rock	3.05	16	<3	4	38.4	31.2	26.5	175	0.9	15.1	3	293	3.16	6	3.3	5.9	35	0.6	0.6	<0.5



BUREAU VERITAS MINERAL LABORATORIES
Canada

www.bureauveritas.com/um

Bureau Veritas Commodities Canada Ltd.
9050 Shaughnessy St Vancouver British Columbia V6P 6E5 Canada
PHONE (604) 253-3158

Client: **Petroutsas, Erini**
Box 431
Dawson City Yukon Y0B 1G0 Canada

Project: REMI
Report Date: January 29, 2018

Page: 2 of 2 Part: 2 of 3

CERTIFICATE OF ANALYSIS

WHI17001091.1

Method	MA270	MA270	MA270	MA270	MA270	MA270	MA270	MA270	MA270	MA270	MA270	MA270	MA270	MA270	MA270	MA270	MA270	MA270	MA270	MA270	MA270
Analyte	V	Ca	P	La	Cr	Mg	Ba	Ti	Al	Na	K	W	Zr	Ce	Sn	Y	Nb	Ta	Be	Sc	
Unit	ppm	%	%	ppm	ppm	%	ppm	%	%	%	%	ppm	ppm	ppm	ppm	ppm	ppm	ppm	ppm	ppm	
MDL	10	0.01	0.01	0.5	1	0.01	5	0.001	0.01	0.01	0.01	0.5	0.5	5	0.5	0.5	0.5	0.5	5	1	
REM1	Rock	294	0.20	0.11	27.6	69	0.76	1553	0.120	4.96	0.31	1.80	1.3	47.3	47	1.8	10.0	3.0	<0.5	<5	11
REM2	Rock	418	0.11	0.06	22.0	69	0.58	1754	0.119	4.20	0.08	2.02	1.7	52.3	38	2.1	5.6	2.8	<0.5	<5	11



BUREAU MINERAL LABORATORIES
VERITAS Canada

www.bureauveritas.com/um

Bureau Veritas Commodities Canada Ltd.
9050 Shaughnessy St Vancouver British Columbia V6P 6E5 Canada
PHONE (604) 253-3158

Client: Petroutsas, Erini
Box 431
Dawson City Yukon Y0B 1G0 Canada

Project: REMI
Report Date: January 29, 2018

Page: 2 of 2

Part: 3 of 3

CERTIFICATE OF ANALYSIS

WHI17001091.1

Method	Analyte	MA270	MA270	MA270	MA270	MA270
		Li	S	Rb	Hf	Se
Unit		ppm	%	ppm	ppm	ppm
MDL		0.5	0.05	0.5	0.5	5
REM1	Rock	24.6	0.07	77.9	1.1	6
REM2	Rock	12.9	0.06	86.2	1.2	<5