

**ARCHER, CATHRO & ASSOCIATES (1981) LIMITED**

1016 – 510 West Hastings Street  
Vancouver, B.C. V6B 1L8

Telephone: 604-688-2568

Fax: 604-688-2578

---

**ASSESSMENT REPORT**

describing

**PROSPECTING AND GEOCHEMICAL SAMPLING**

at the

**ELIAS PROPERTY**

ELLIAS 1-14      YD34077-YD34090

ELLIAS 15-24    YF46954-YF46963

NTS 115H/05

Latitude 61°15'N; Longitude 137°55'W

Field work performed on August 16, 2017

located in the

Whitehorse Mining District  
Yukon Territory

prepared by

Archer, Cathro & Associates (1981) Limited

for

**STRATEGIC METALS LTD.**

by

H. Burrell, P.Geo.

February 2018

## **CONTENTS**

INTRODUCTION	1
PROPERTY LOCATION, CLAIM DATA AND ACCESS	1
HISTORY AND PREVIOUS WORK	1
GEOMORPHOLOGY	3
GEOLOGY	4
MINERALIZATION	5
GEOCHEMISTRY	6
DISCUSSION AND CONCLUSIONS	7
REFERENCES	9

## **APPENDICES**

I	STATEMENT OF QUALIFICATIONS
II	STATEMENT OF EXPENDITURES
III	ROCK SAMPLE DESCRIPTIONS
IV	CERTIFICATES OF ANALYSIS

## **FIGURES**

<u>No.</u>	<u>Description</u>	<u>Follows Page</u>
1	Property Location	1
2	Claim Locations	1
3	Tectonic Setting	4
4	Geology	4
5	Rock Sample Locations	5
6	Gold Rock Geochemistry	5
7	Arsenic Rock Geochemistry	5
8	Antimony Rock Geochemistry	5
9	Silver Rock Geochemistry	5
10	Soil Sample Locations	6
11	Gold Soil Geochemistry	7
12	Arsenic Soil Geochemistry	7
13	Antimony Soil Geochemistry	7
14	Silver Soil Geochemistry	7

## **TABLES**

<u>No.</u>	<u>Description</u>	<u>Page</u>
I	Lithological Descriptions	4
II	Anomalous Rock Thresholds	6
III	Soil Sample Thresholds and Peak Values	7

## **INTRODUCTION**

The Elias property covers a gold vein system of possible epithermal type affinity. It lies in the Ruby Range in the southern part of the Yukon Plateau and is wholly owned by Strategic Metals Ltd.

This report describes a one day prospecting and geochemical sampling program conducted on August 16, 2017 by Archer, Cathro & Associates (1981) Limited on behalf of Strategic. The author supervised the program and interpreted all data, and her Statement of Qualifications is shown in Appendix I. A Statement of Expenditures is located in Appendix II.

## **PROPERTY LOCATION, CLAIM DATA AND ACCESS**

The Elias property comprises 24 contiguous quartz claims, which are located in southwestern Yukon at latitude 61°15' north and longitude 137°55' west on NTS map sheet 115H/05 (Figure 1). The property covers an area of approximately 490 ha (4.9 km<sup>2</sup>). The claims are registered with the Whitehorse Mining Recorder in the name of Archer Cathro, which holds them in trust for Strategic. Specifics concerning claim registration are tabulated below, while the locations of the individual claims are presented in Figure 2.

<u>Claim Name</u>	<u>Grant Number</u>	<u>Expiry Date*</u>
Ellias 1-14	YD34077-YD34090	April 15, 2023
Ellias 15-24	YF46954-YF46963	April 15, 2022

\* Expiry dates include 2017 work.

In 2017, access to and from the property was conducted by TransNorth Helicopters from its permanent base in Haines Junction. The crew performed one day of work during a fly camp demobe from Strategic's Vault property, which lies 95 km to the west-northwest of the Elias property.

The Elias property is located 62 km north-northwest of Haines Junction. The closest road access is a bush road that extends from the Alaska Highway to placer mining operations at Gladstone Creek. That road is 15 km northwest of the property, while the Aishihik Hydroelectric Dam is located 52 km to the east.

## **HISTORY AND PREVIOUS WORK**

Although the Elias property is located near a number of active placer mines, the first quartz claims were not staked until 1989 when J.P. Ross visited the area to follow up a Geological Survey of Canada (GSC) silt anomaly in the area. Ross staked the Mom and Jan claims, which were optioned to Noranda Exploration Company Limited in 1990 (Deklerk and Traynor, 2005).

In 1990, Noranda conducted a two phase program on the property. Phase 1 comprised geochemical, geological and geophysical surveying while Phase 2 consisted of backhoe trenching (Photo 1).

**STRATEGIC METALS LTD.**

**FIGURE 1**  
ARCHER, CATHRO & ASSOCIATES (1981) LIMITED

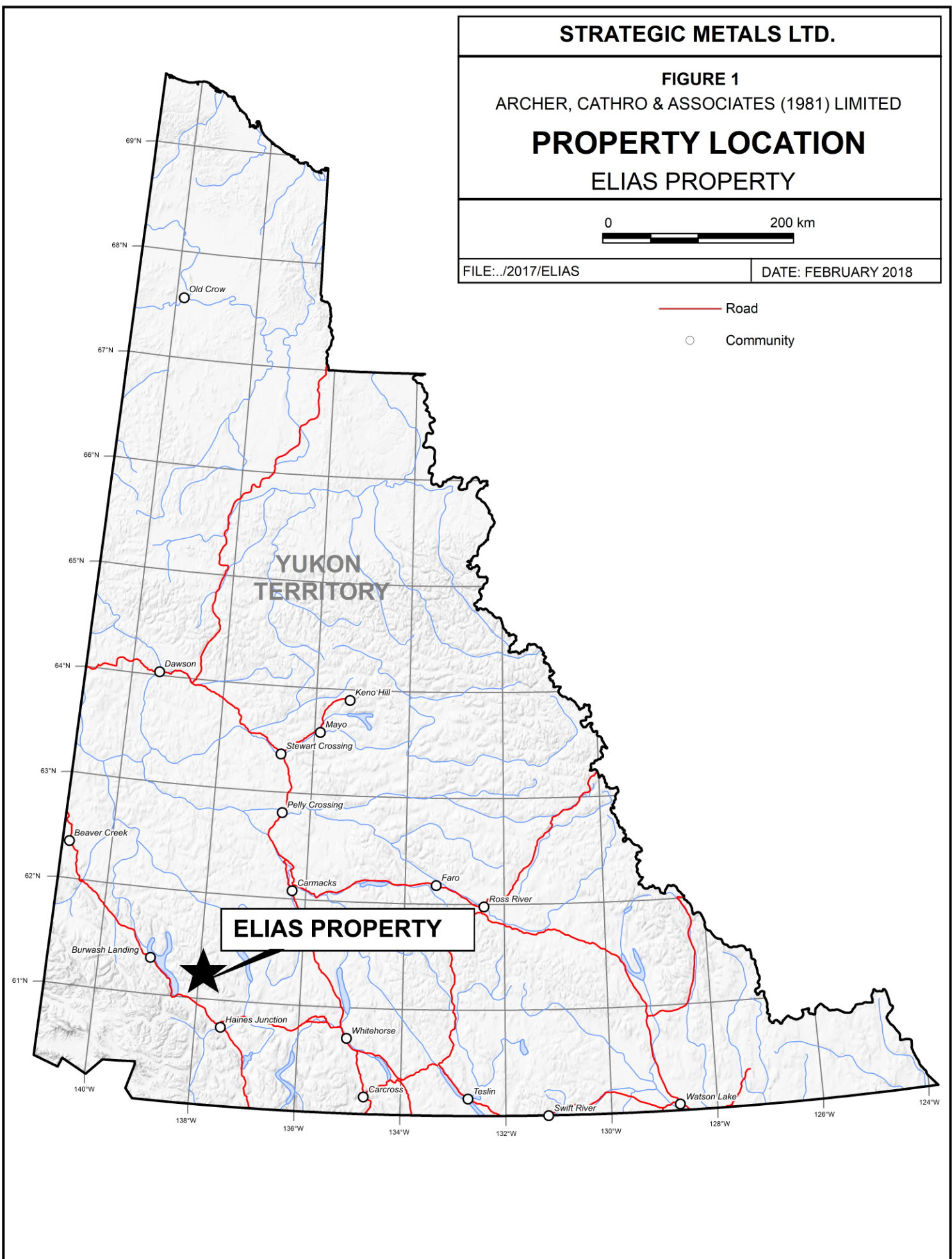
**PROPERTY LOCATION**  
**ELIAS PROPERTY**

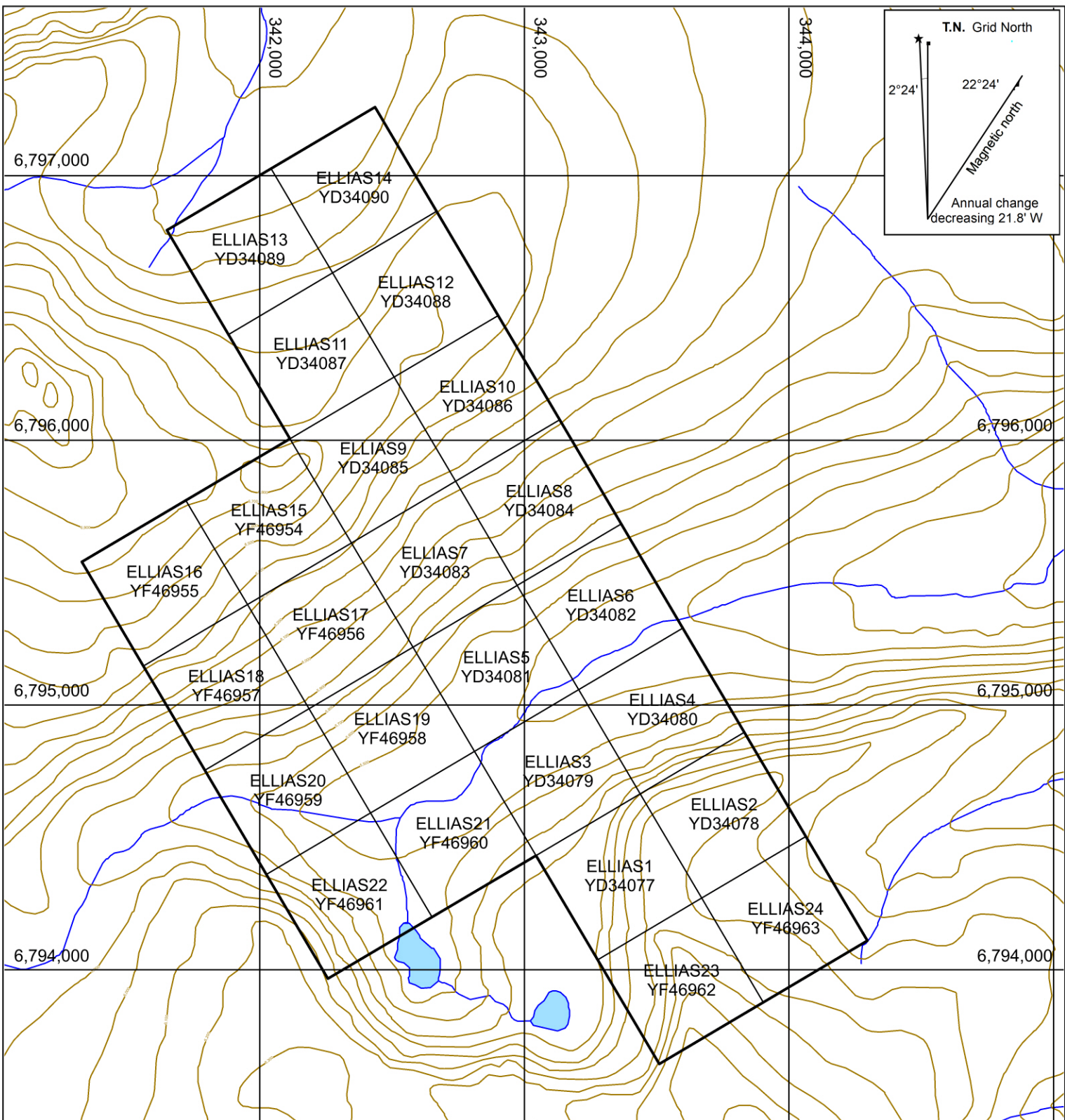


FILE:../2017/ELIAS

DATE: FEBRUARY 2018

- Road
- Community





**STRATEGIC METALS LTD.**

FIGURE 2  
 ARCHER, CATHRO & ASSOCIATES (1981) LIMITED

**CLAIM LOCATIONS**  
 ELIAS PROPERTY



UTM ZONE 8, NAD 83, 115H/05

FILE: ...2017/ELIAS/figures/claims

DATE: FEBRUARY 2018



Photo 1 – Backhoe trench 2 looking southwest

Phase 1 work identified a primary northwest-trending structure (Elias Structure) delineated by mineralized quartz vein float that was traced for 2800 m. Quartz vein material is light grey to peach, chalcedonic to sucrosic and commonly exhibits limonite and scorodite stains. Mineralization comprises 1-2% disseminated arsenopyrite. Minor brecciation of metamorphic country rocks locally occurs within quartz veins. A total of 772 grid soil samples were collected from the property. A strong correlation between gold and arsenic was noted, with the best gold result (106 ppb) associated with a 559 ppm arsenic value. Anomalous soil values appear to be restricted to areas of mineralized float or down-stream areas enriched by hydromorphic dispersion of arsenic. A ground magnetometer survey delineated northwest-trending physiographic linears based on breaks in the magnetic signature. These linears were attributed to faulting or dyking (Duke, 1990). For Phase 2, a helicopter-portable backhoe was mobilized to the property. Three trenches targeting the Elias Structure were attempted, but only two reached bedrock. Results from chip samples of bedrock include: 2.6 g/t gold and 5019 ppm arsenic over 1.0 m; and, 0.49 g/t gold and 1872 ppm arsenic over 1.0 m. Grab samples returned up to 7.34 g/t gold, 2.07% arsenic, 1261 ppm antimony and 42.4 g/t silver (Duke, 1990). No additional work was completed on the property because Noranda was looking for a bulk-tonnage deposit, not vein style mineralization.

In 2010, Rockhaven Resources Ltd. staked the Elias 1 to 14 claims to cover the Elias Structure. No work was performed by Rockhaven until September 2012 when one day of prospecting and soil sampling was completed. This work returned encouraging results including peak values from rock sampling of 6.26 g/t gold, 6.64 g/t silver, 189.5 ppm antimony and greater than 10,000

ppm arsenic. Peak soil values from 2012 include 464 ppb gold, 0.67 ppm silver, 1320 ppm arsenic and 36.8 ppm antimony (Smith, 2012).

In summer 2015, Rockhaven sold the Elias property to Strategic as part of a deal that included multiple Yukon exploration projects.

In July 2017, Strategic staked the Elias 15 to 24 claims west of the original claim block to cover ground that is prospective for hosting parallel gold-rich structures.

### **GEOMORPHOLOGY**

The Elias property lies within the Ruby Range in the southern part of the Yukon Plateau. The property hosts Cordilleran and Montane glacial features as most of the property was affected by Middle Pleistocene (200 ka) glaciation while the northern corner of the property was affected by Late Pleistocene (22 ka) glaciation (YGS, 2012).

Elevations on the property range from 1615 to 2070 metres above sea level. The entire property lies well above treeline and vegetation is limited to moss and lichen (Photo 2). The property does not appear to be affected by permafrost, likely due to the thin vegetation cover.



Photo 2 – Typical terrain and vegetation on the Elias property  
Outcrop on the property is limited to ridge crests where it is often highly fractured. Although blocky talus underlies most of the property, soil is readily available for sampling.



The climate in the Elias property area is typical of northern continental regions with long, cold winters, truncated fall and spring seasons and short, mild summers. Temperatures typically vary from 20 °C in summer to -35 °C in winter. The property is mostly snow free from early June to late September; however snow can fall in any month.

## GEOLOGY

The Elias property is located in the Kluane Schist Terrane immediately adjacent to Yukon-Tanana Terrane (YTT) in southwestern Yukon (Figure 3). The Elias property lies between the Tintina and Denali faults. The regional geology was originally mapped at 1:250,000 scale by the GSC in the early 1970s (Templeman-Kluit, 1974). In 1999, Gordey and Makepeace (1999) compiled regional geology in the Elias area. In 2010, the Yukon Geological Survey (YGS) re-mapped parts of map sheets 115G and 115H (Israel et al., 2010). Figure 4 illustrates the current mapping near the Elias property, while Table I below lists updated geological descriptions of the main units in the region.

**Table I – Lithological Descriptions**

Unit Name (symbol)	Age	Description ( <i>From Israel et al., 2010</i> )
Ruby Range Suite (PgR)	Paleocene	Biotite-hornblende granodiorite (locally K-feldspar megacrystic) with minor tonalite; often has gneissic textures near the lower structural contact.
Ruby Range Suite (PgnR)	Paleocene	Granodiorite gneiss; foliated granodiorite.
Kluane Schist (KK2)	Late Cretaceous	Dark grey to black, fine grained, quartz-biotite schist; muscovite schist; quartzite; local garnet and plagioclase porphyroblasts.
Kluane Schist (KK4)	Late Cretaceous	Gneissic equivalents to the Kluane Schist (KK2). Included paragneiss and migmatites.

The Elias property area is underlain by an assemblage of Late Cretaceous or older Kluane Schist (KK2) primarily comprised of quartz-biotite schist with lesser muscovite schist. The property itself is underlain by gneissic equivalents of the Kluane Schist (KK4), including paragneiss and migmatites created by the partial melting and deformation of KK2. About 500 m east of the property lies a large Paleocene Ruby Range Batholith (PgR) comprised of biotite-hornblende granodiorite with minor tonalite. This intrusive body has an irregular contact with the KK4 gneissic package. In the southeast corner of the property, an oblong body of deformed Ruby Range Batholith (PgnR) has been thrust onto KK4.

Foliation within KK4 strikes between 045° and 090° and dips between 15° and 58° to the southeast (Photo 3). Fracture orientations in the deformed Ruby Range Batholith strike 350° and dip 54° east (Israel et al., 2010).

No property scale mapping has been done on the Elias property.

# STRATEGIC METALS LTD.

FIGURE 3

ARCHER, CATHRO & ASSOCIATES (1981) LIMITED

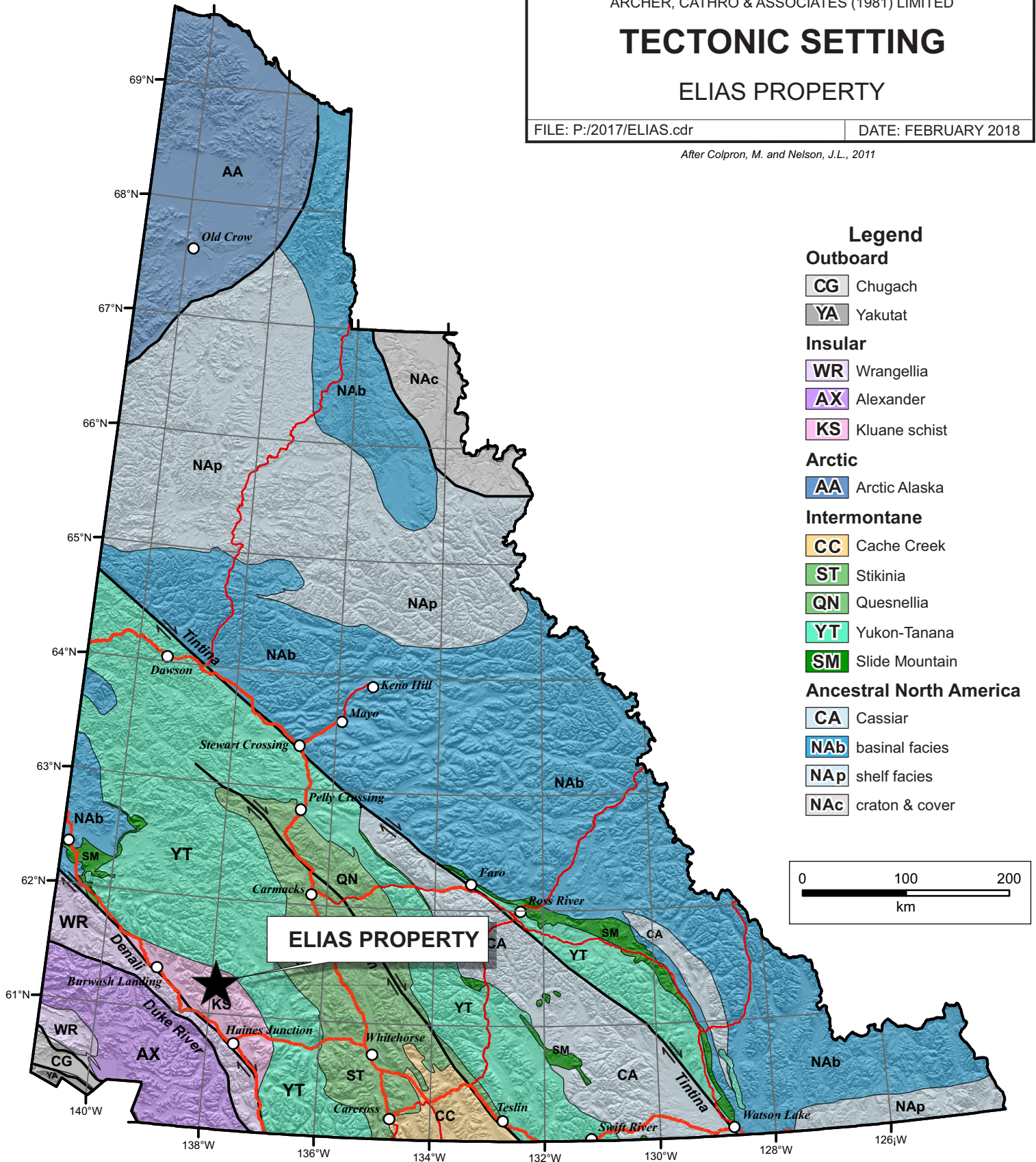
## TECTONIC SETTING

### ELIAS PROPERTY

FILE: P:/2017/ELIAS.cdr

DATE: FEBRUARY 2018

After Colpron, M. and Nelson, J.L., 2011



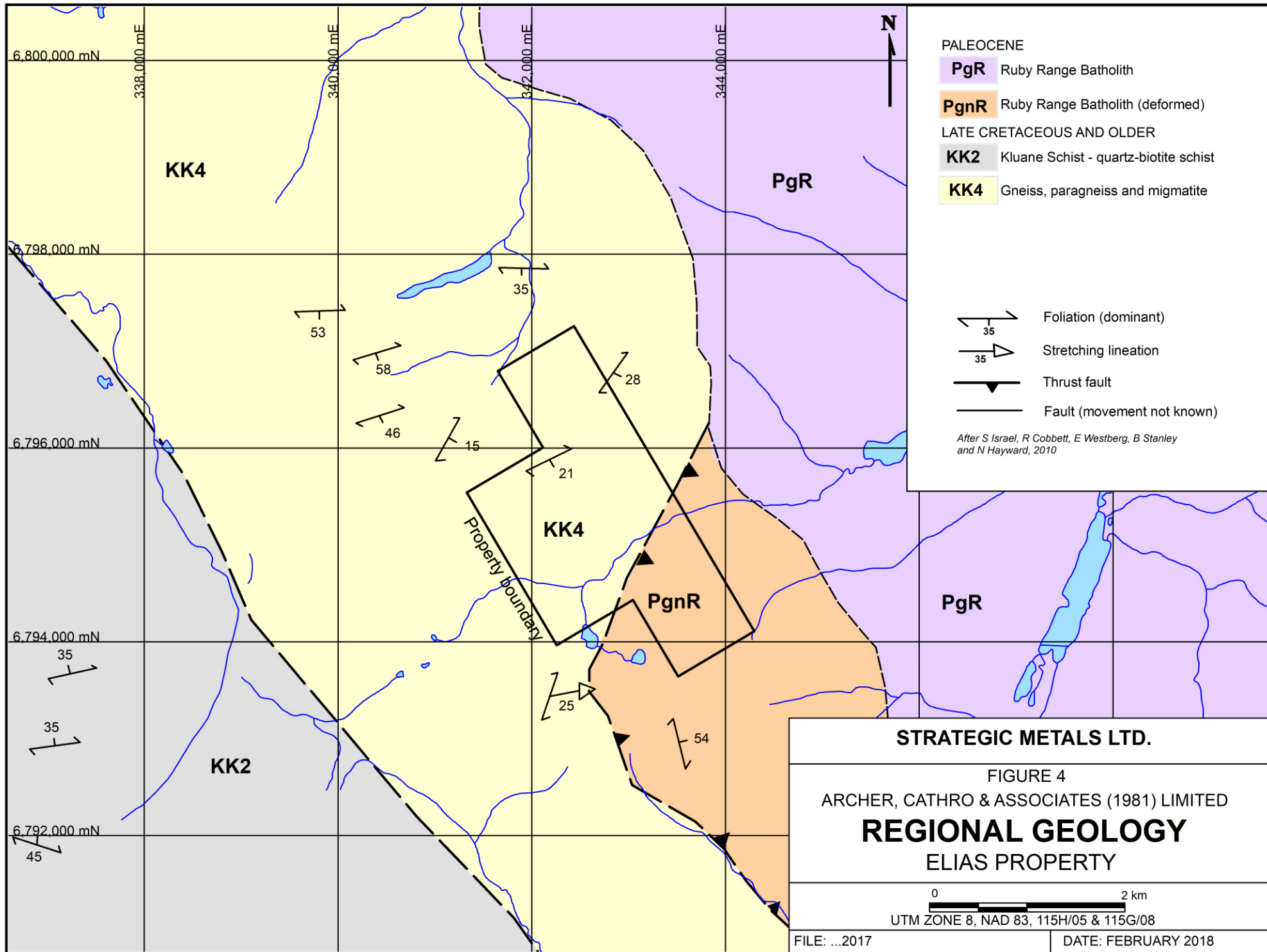




Photo 3 – Kluane Schist (KK4) in outcrop

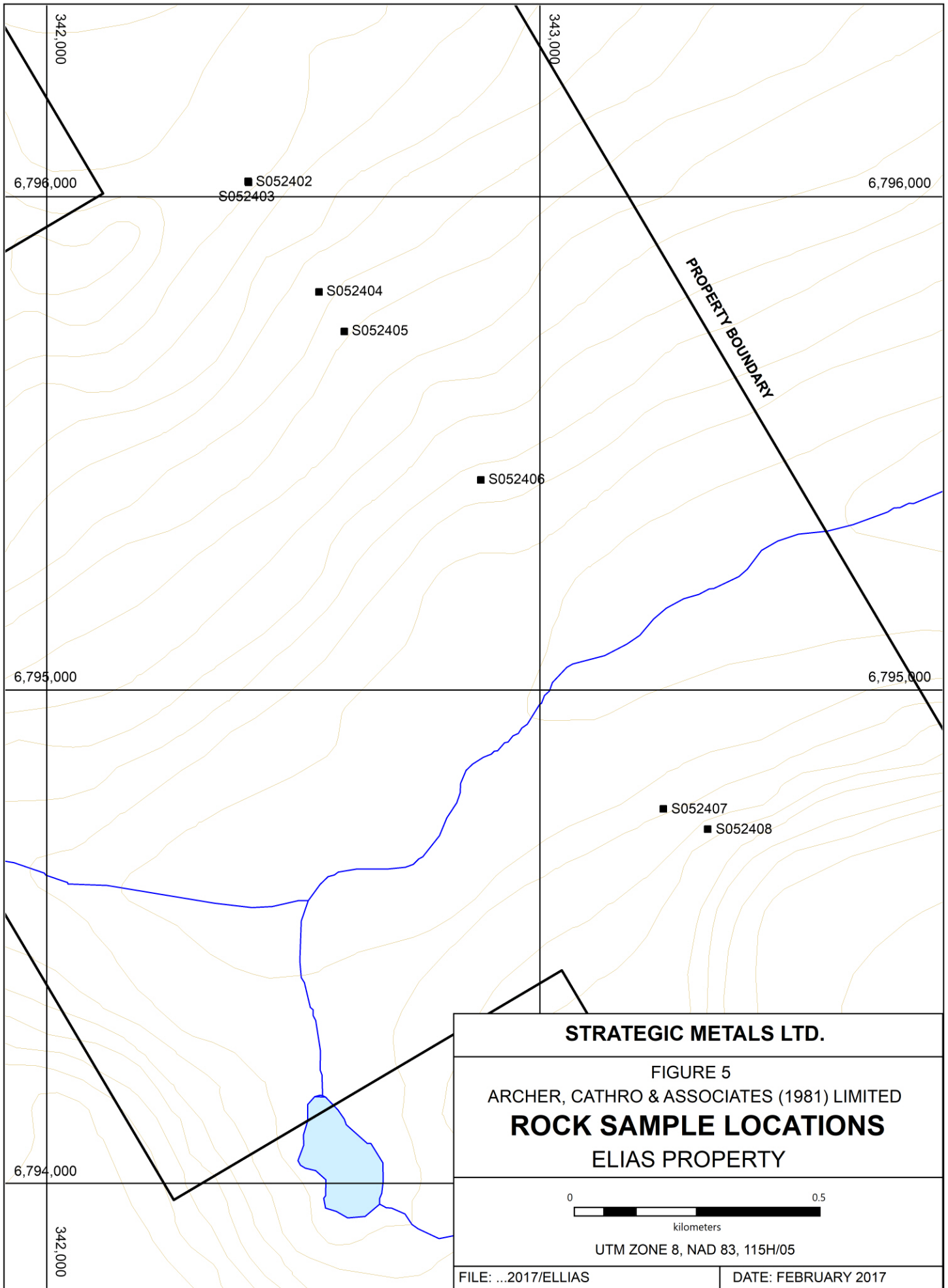
### **MINERALIZATION**

Known mineralization on the property is hosted in epithermal type quartz veins and veinlets that are mostly confined to the Elias Structure, which cuts KK4. The veins comprise white to pale pink quartz and are chalcedonic to sucrosic in texture. Mineralization consists of finely disseminated to blebby arsenopyrite with weak to strong limonite and scorodite alteration.

Historical rock samples were collected throughout the property but the majority were taken from within the Elias Structure. Additional vein float has been identified in smaller linear features east and west of the main structure; however, these features have not been adequately evaluated and the overall abundance of quartz veins in other parts of the property has not yet been determined.

In 2017, seven rock samples were collected within and along strike of the Elias structural trend. Rock sample locations and results for gold, arsenic, antimony and silver are plotted on Figures 5 to 9, respectively. All rock sample sites in 2017 were marked with orange flagging tape labelled with the sample number. The location of each sample was determined using a handheld GPS unit. All samples sent for shipment were double bagged with pre-numbered sample tags placed in the bag.

The rock samples were submitted to ALS Minerals in Whitehorse where they were dried and fine crushed to  $-2$  mm. A 250 g split was then pulverized to 75 micron and a portion of this material was sent to ALS Minerals in North Vancouver where it was digested in aqua regia before being analyzed for 51 elements with inductively coupled plasma-atomic emission spectroscopy and



■ S052402  
S052403

■ S052404

■ S052405

■ S052406

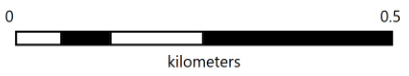
■ S052407

■ S052408

PROPERTY BOUNDARY

**STRATEGIC METALS LTD.**

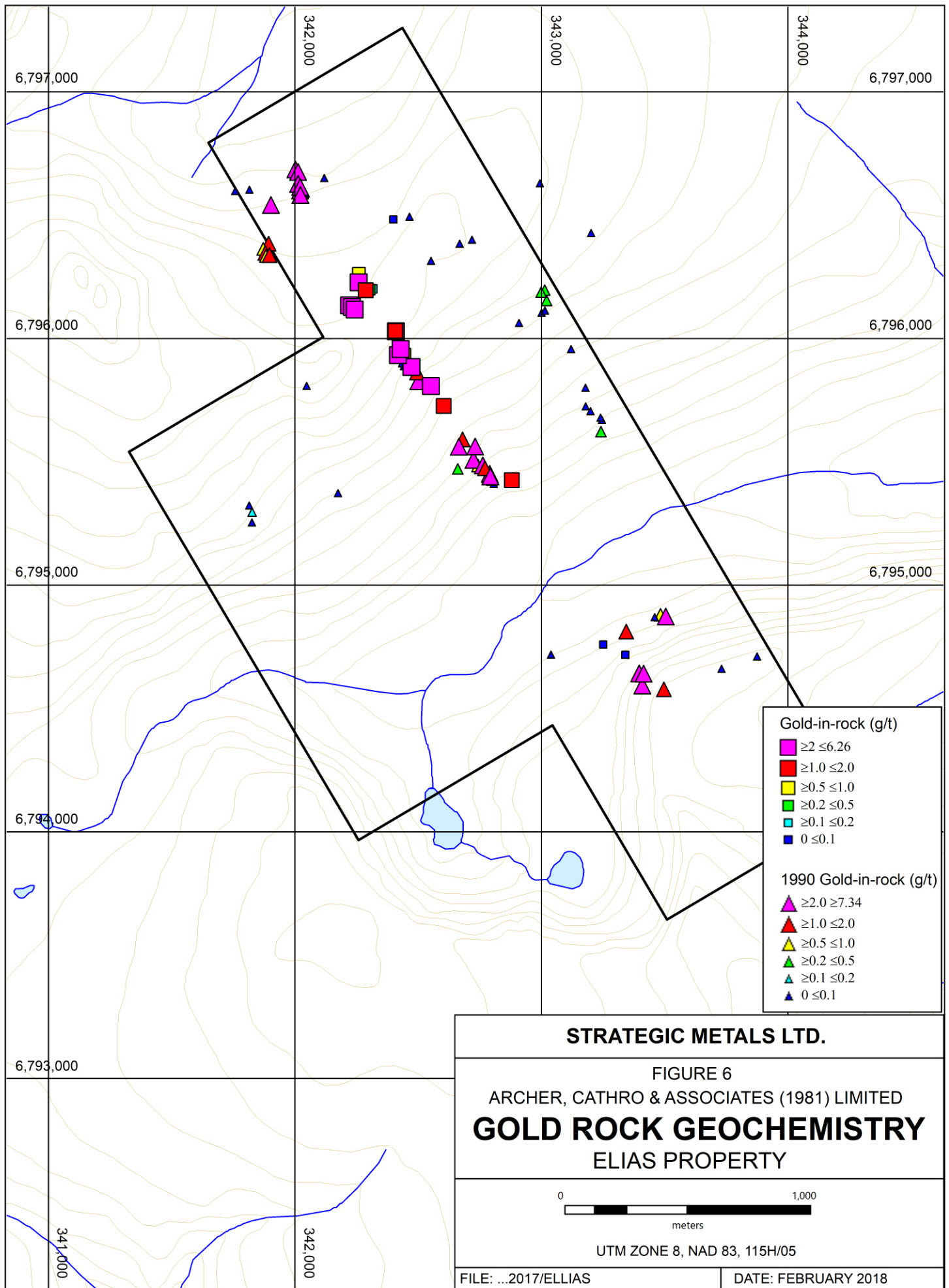
FIGURE 5  
ARCHER, CATHRO & ASSOCIATES (1981) LIMITED  
**ROCK SAMPLE LOCATIONS**  
ELIAS PROPERTY

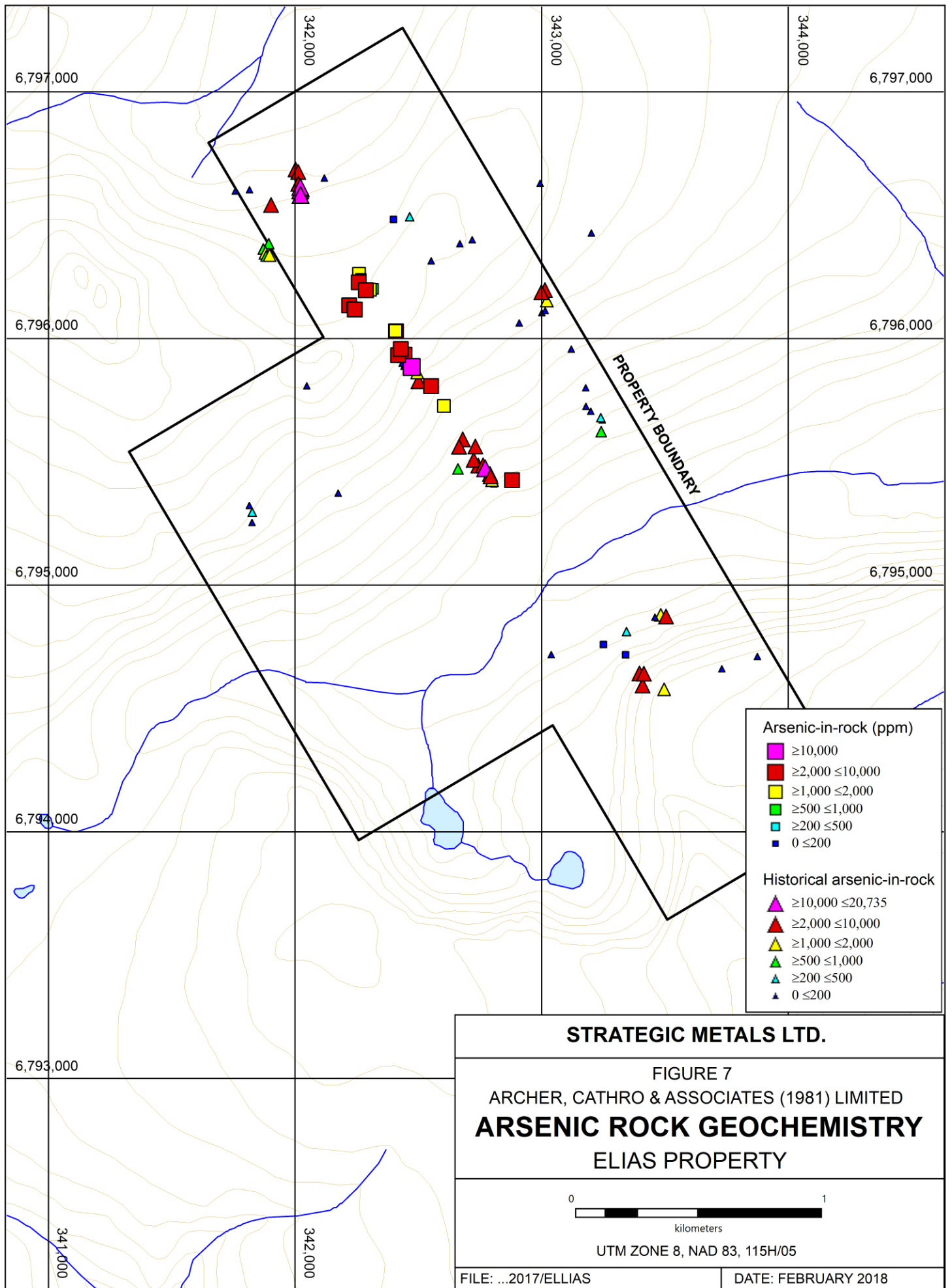


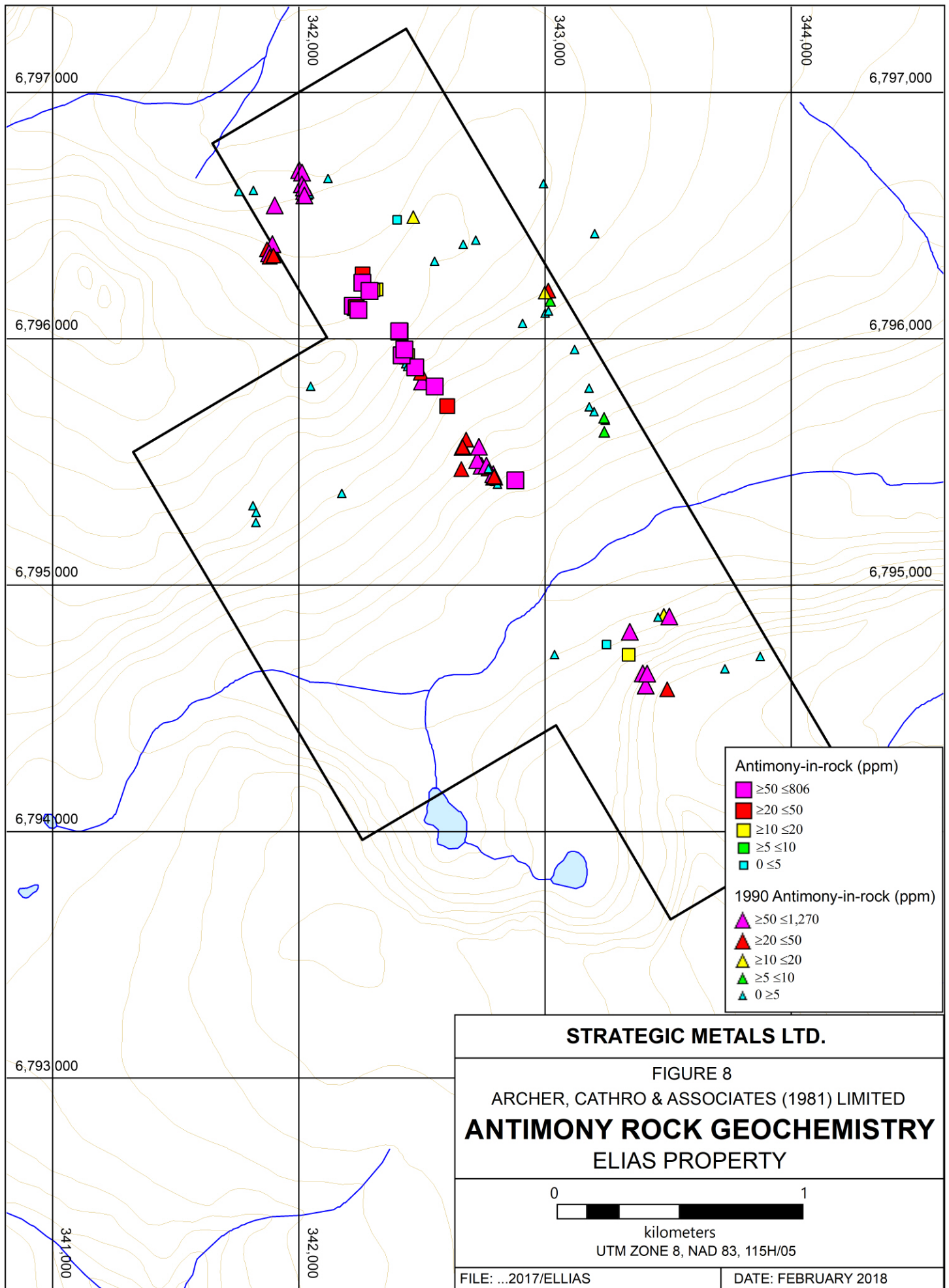
UTM ZONE 8, NAD 83, 115H/05

FILE: ...2017/ELLIAS

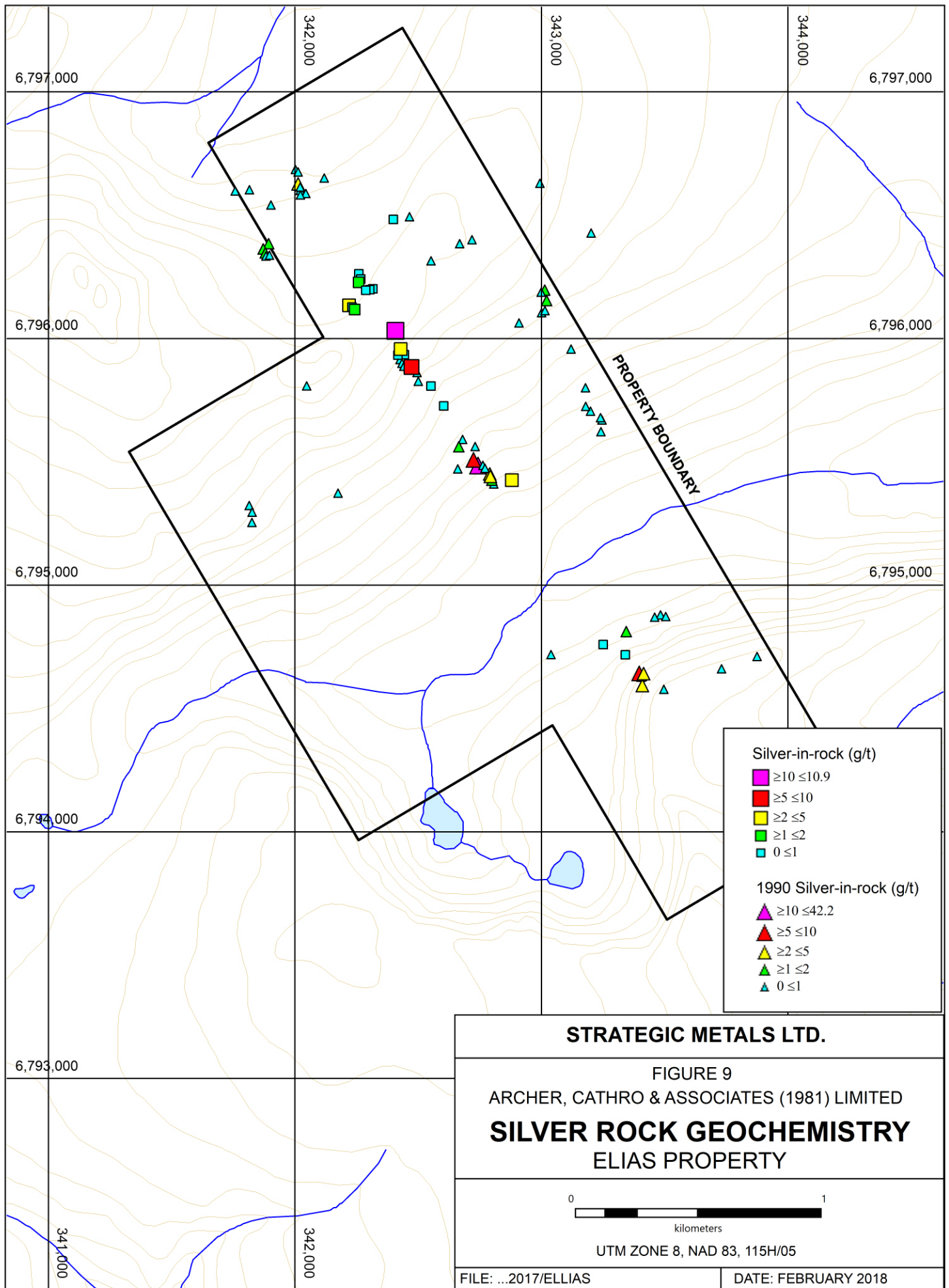
DATE: FEBRUARY 2017











inductively coupled plasma-mass spectrometry (ME-MS41). All rock samples were also analyzed for gold using a fire assay fusion followed by inductively coupled plasma-atomic emission spectrometry (Au-ICP21). Rock Sample Descriptions are provided in Appendix III and Certificates of Analysis are given in Appendix IV. Table II lists anomalous thresholds used to describe rock geochemical results.

**Table II-Anomalous Rock Thresholds**

Element	Weak	Moderate	Strong	Peak
Gold (g/t)	$0.2 \leq 0.5$	$0.5 \leq 1.0$	$\geq 1.0$	7.34
Arsenic (ppm)	$500 \leq 1000$	$1000 \leq 2000$	$\geq 2000$	20,800
Antimony (ppm)	$5 \leq 10$	$10 \leq 20$	$\geq 20$	1270
Silver (g/t)	$2 \leq 5$	$5 \leq 10$	$\geq 10$	42.2

Results from 2017 rock sampling were in line with historical results, with peak values of 5.87 g/t gold, 10.9 g/t silver, 9080 ppm arsenic and 806 ppm antimony. There is good correlation between strongly anomalous gold, arsenic, antimony and silver values along the Elias Structure. Sections of this structure in the northern part of the property are obscured by a grassy, water saturated plateau; however, even farther north, topography steepens and quartz vein float reappears.

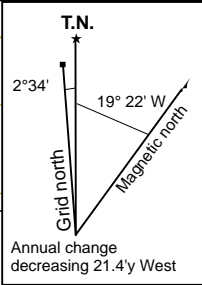
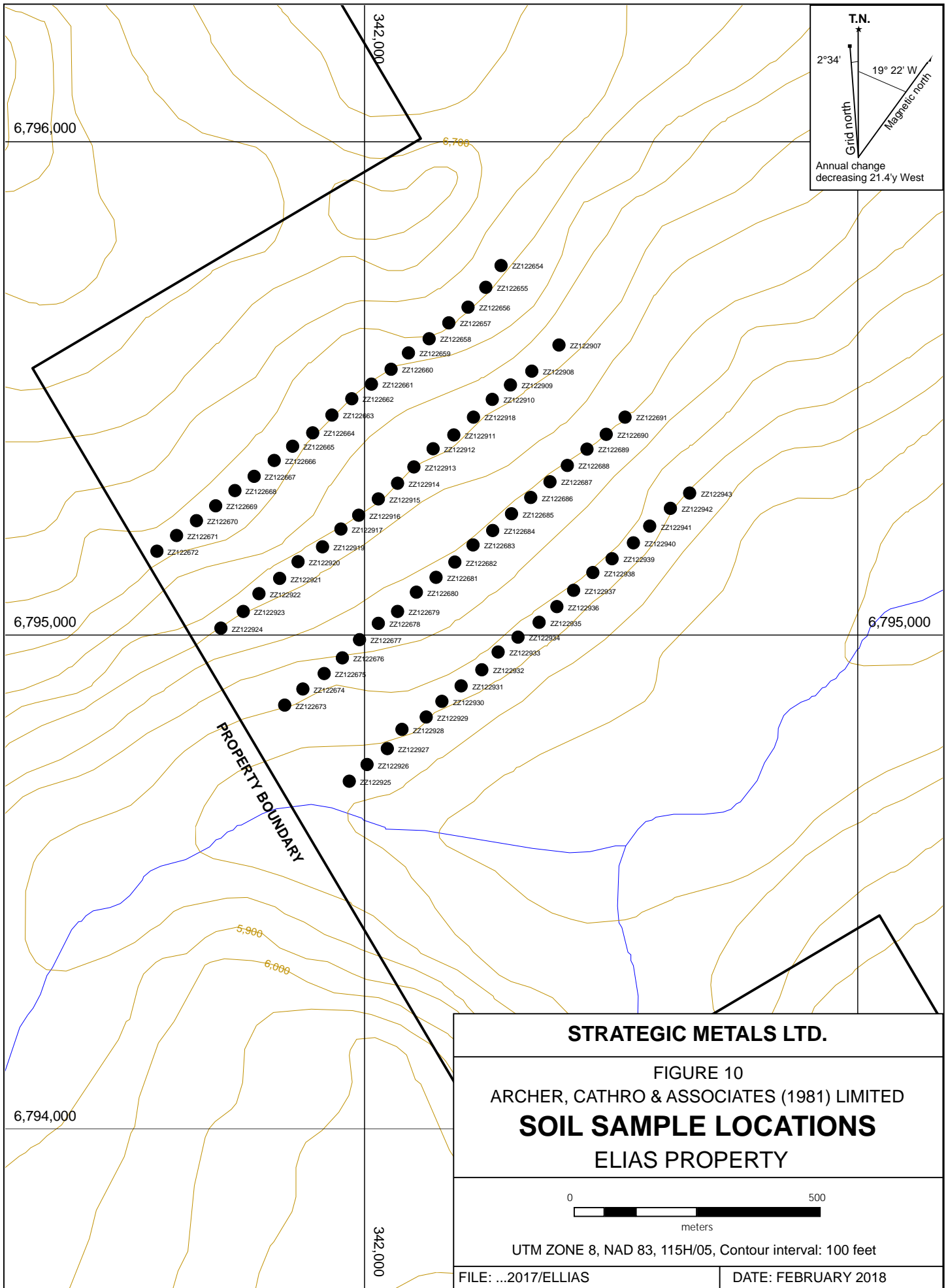
Samples collected from the southern part of the property were depleted in arsenic, but still returned strongly anomalous gold, antimony and silver values. Historical samples collected in the eastern part of the property returned weak gold values with weak to strong arsenic, antimony and silver support.

## **GEOCHEMISTRY**

Maps documenting the historical soil grid did not have enough reference points to be accurately compiled with the most recent field data.

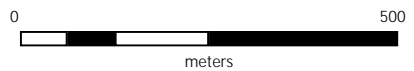
In 2017, a total of 75 soil samples were collected at 50 m intervals on lines spaced 200 m apart (Figure 10). These samples were collected to the west of the 2012 soil samples in an attempt to highlight parallel veins. All soil samples were collected using hand-held augers from as deep in the soil profile as ground conditions allowed, which was about 60 cm depth. Samples were placed into individually pre-numbered Kraft paper bags, sample sites were marked by aluminum tags inscribed with the sample numbers and affixed to 0.5 m wooden lath that were driven into the ground. All soil sample locations were recorded using hand-held GPS units.

The soil samples were sent to ALS Minerals laboratory in Whitehorse, where they were dried, screened to -180 microns, and then to ALS Minerals laboratory in North Vancouver, where they were analyzed for 51 elements using an aqua regia digestion followed by inductively coupled plasma combined with mass spectroscopy and atomic emission spectroscopy (ME-MS41). An additional 30 g charge was further analysed for gold by fire assay fusion with inductively coupled plasma-atomic emissions spectroscopy finish (Au-ICP21). Certificates of Analysis are provided in Appendix IV.



**STRATEGIC METALS LTD.**

FIGURE 10  
 ARCHER, CATHRO & ASSOCIATES (1981) LIMITED  
**SOIL SAMPLE LOCATIONS**  
 ELIAS PROPERTY



UTM ZONE 8, NAD 83, 115H/05, Contour interval: 100 feet

FILE: ...2017/ELIAS

DATE: FEBRUARY 2018

Results for gold, arsenic, antimony and silver are plotted on Figures 11 to 14. Table III lists the thresholds for weak, moderate and strong soil anomalies, plus peak values of each element of interest.

**Table III – Soil Sample Thresholds and Peak Values**

Element	Weak	Moderate	Strong	Peak
Gold (ppb)	$20 \leq 50$	$50 \leq 100$	$\geq 100$	464
Arsenic (ppm)	$50 \leq 100$	$100 \leq 200$	$\geq 200$	1320
Antimony (ppm)	$2 \leq 5$	$5 \leq 10$	$\geq 10$	36.8
Silver (ppm)	$0.2 \leq 0.5$	$0.5 \leq 0.67$	--	0.67

Historical soil sampling on the property was effective at delineating the Elias Structure and at least two parallel vein structures represented by a linear string of moderately to strongly anomalous samples for all elements of interest. A number of additional soil samples returned weak values for gold (20 to 500 ppb). These samples warrant follow up work because the sampling conditions were difficult due to poor soil development, undisturbed ground and the timing of the sampling.

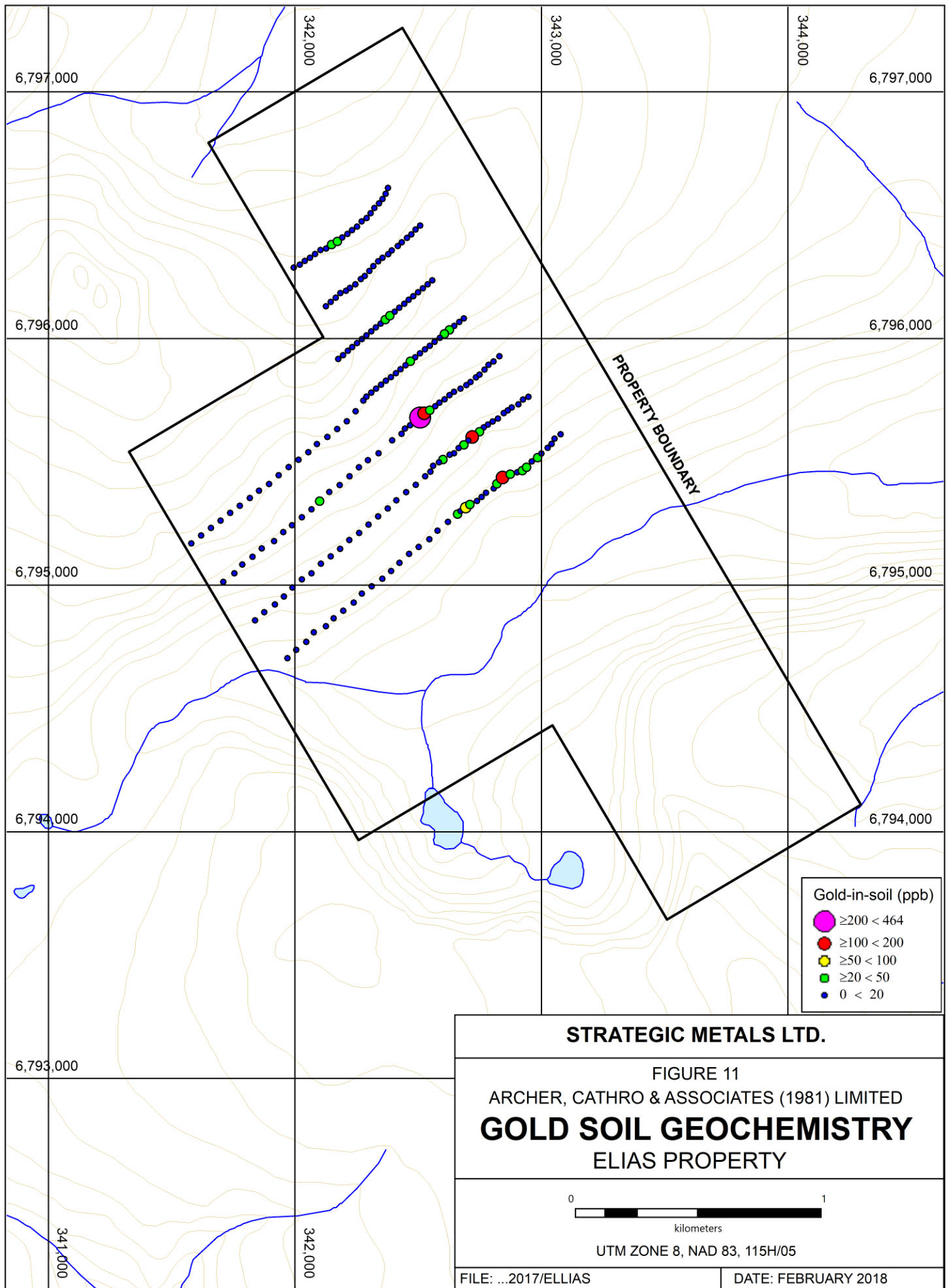
Sampling in 2017 did not return any strongly anomalous values for elements of interest, but it did yield samples with weakly to moderately anomalous values including 43 ppb gold, 113.5 ppm arsenic, 6.74 ppm antimony and 0.36 ppm silver, all of which warrant follow up work targeting parallel vein structures. Soil results for lead, zinc, copper are low.

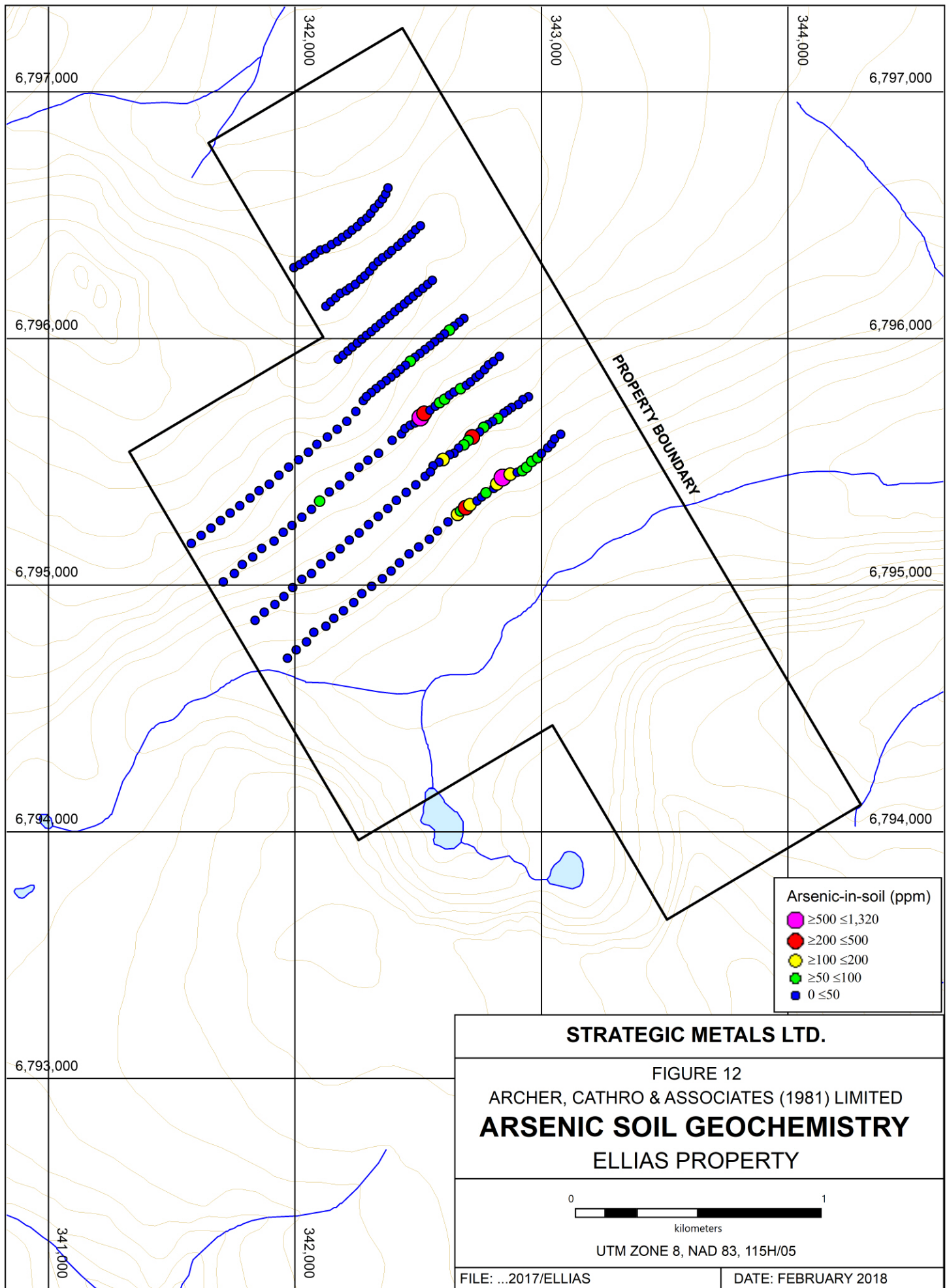
### **DISCUSSION AND CONCLUSIONS**

The Elias property lies in the Ruby Range Mountains in southwest Yukon and hosts an epithermal type gold vein system that has received only cursory work thus far.

Results from the 2017 exploration program supported historical results and provided new target areas that likely represent parallel vein structures. The Elias Structure and the parallel, subtle soil geochemical anomalies should receive additional work to evaluate the full potential of the vein system.

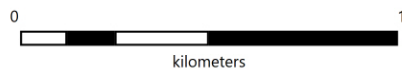
Future work is warranted on the property and should consist of closer spaced soil sampling across the entire property, systematic prospecting and hand trenching in areas that have yielded weakly to strongly anomalous values for gold and moderately to strongly anomalous values for arsenic, antimony and silver. Due to the irregular nature of most veins, numerous cuts should be made along the strike length of the Elias Structure to determine its true width and grade continuity.



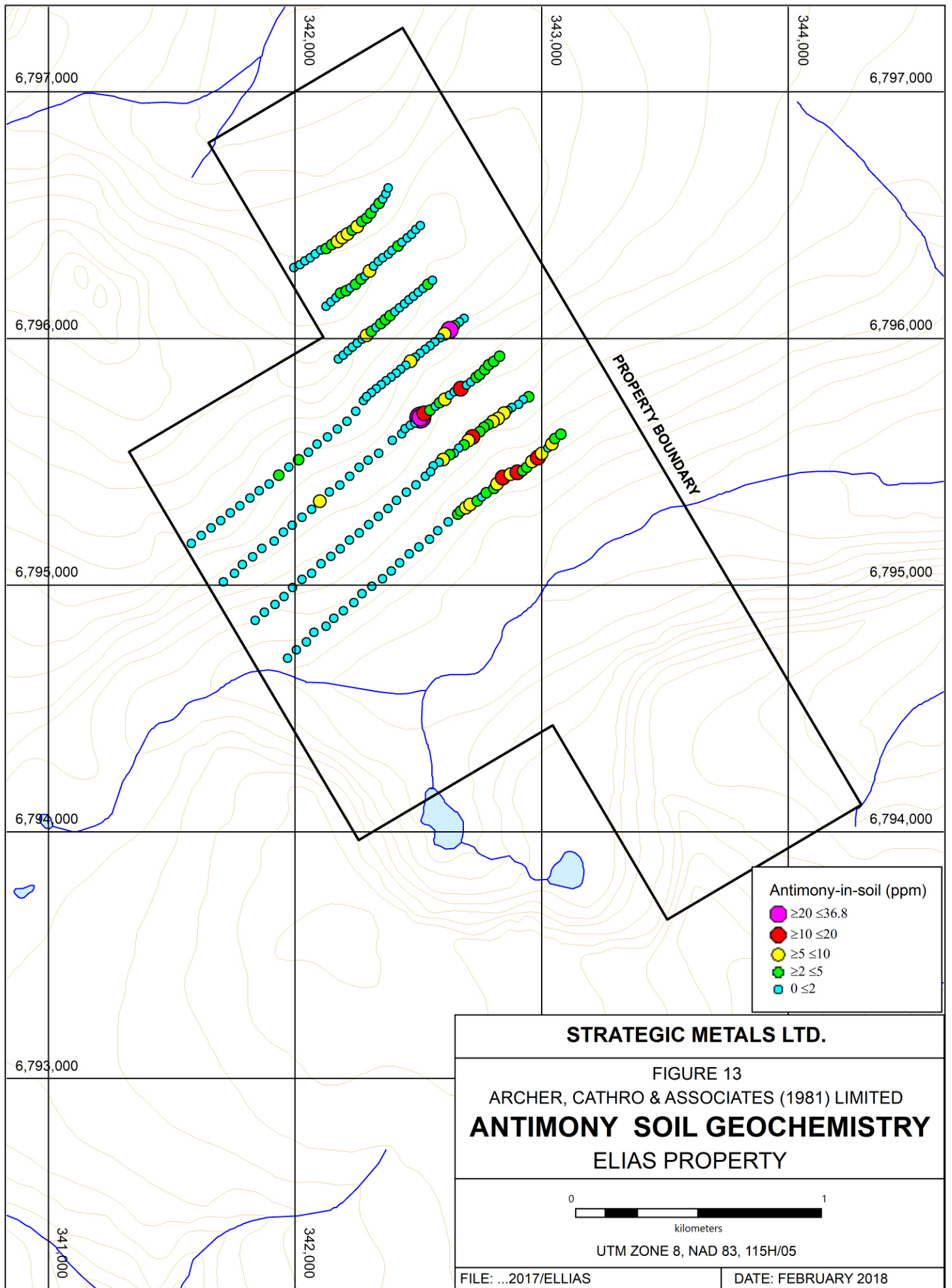


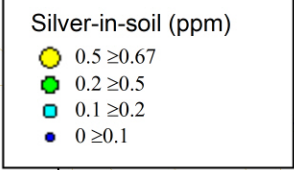
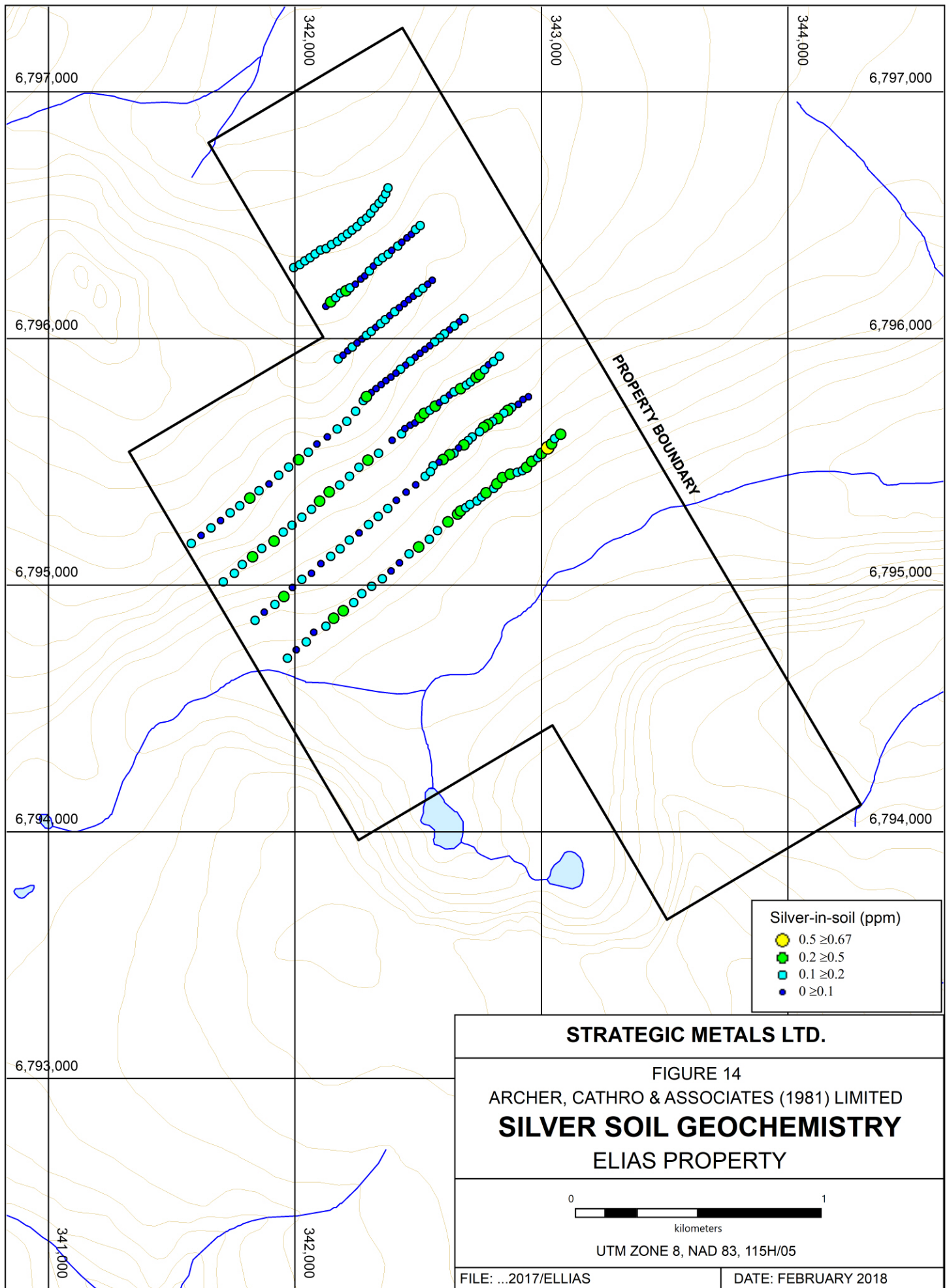
**STRATEGIC METALS LTD.**

FIGURE 12  
 ARCHER, CATHRO & ASSOCIATES (1981) LIMITED  
**ARSENIC SOIL GEOCHEMISTRY**  
 ELLIAS PROPERTY



UTM ZONE 8, NAD 83, 115H/05







Respectfully submitted,

ARCHER, CATHRO & ASSOCIATES (1981) LIMITED



H. Burrell, B.Sc., P.Geo.

## REFERENCES

Colpron, M. and Nelson, J. L.

- 2011 A Digital atlas of terranes for the Northern Cordillera; Yukon Geological Survey and BC Geology Survey, BCGS GeoFile 2011-11 ([http://www.geology.gov.yk.ca/pdf/CanCord\\_terranes\\_2011.pdf](http://www.geology.gov.yk.ca/pdf/CanCord_terranes_2011.pdf)).

Deklerk, R. and Traynor, S. (compilers)

- 2005 Yukon MINFILE – a database of mineral occurrences (Mom – 115H060). Available at: <http://servlet.gov.yk.ca/ygsmin/occurrence.do?occurrenceID=115H+060>

Duke, J.

- 1990 Report on geochemical sampling, backhoe trenching and geophysical surveying on the Mom and Jan claims in southwest Yukon. Report prepared for Noranda Exploration Company Limited (AR 092903).

Gordey, S.P. and Makepeace, A.J. (comp.).

- 1999 Yukon digital geology, Geological Survey of Canada Open File D3826 and Exploration and Geological Services Division, Yukon Region, Indian and Northern Affairs Canada.

Israel, S., Cobbett, R., Westberg, E., Stanley, B. and Hayward, N.

- 2010 Preliminary bedrock geology map of the Ruby Ranges, southwest Yukon (Parts of NTS 115G and 115H). Open File 2011-2

Tempelman-Kluit, D.J.

- 1974 Reconnaissance geology of Aishihik Lake, Snag and part of Stewart River map-areas, west-central Yukon; Geological Survey of Canada.

Smith, H.

- 2012 Assessment Report describing prospecting and geochemical sampling at the Ellias property. Report prepared for Rockhaven Resources Ltd.

Yukon Geological Survey

- 2012 MapViewer Online <http://mapservices.gov.yk.ca/Mining/WebMap.aspx>

**APPENDIX I**  
**STATEMENT OF QUALIFICATIONS**

## STATEMENT OF QUALIFICATIONS

I, Heather Burrell, geologist, with business addresses in Vancouver and Squamish, British Columbia and Whitehorse, Yukon Territory and residential address in Whitehorse, Yukon, do hereby certify that:

1. I graduated from the University of British Columbia in 2006 with a B. Sc in Geological Sciences.
2. From 2004 to present, I have been actively engaged in mineral exploration in the Yukon Territory, British Columbia and Northwest Territories.
3. I am a Professional Geoscientist (P. Geo.) with the Association of Professional Engineers and Geoscientists of British Columbia (Member Number 34689).
4. I have personally supervised the fieldwork reported herein and have interpreted all data resulting from this work.



H. Burrell, B.Sc., P.Geo.

**APPENDIX II**  
**STATEMENT OF EXPENDITURES**

Statement of Expenditures  
Ellias 1-22 Mineral Claims  
February 5, 2018

Labour

D. Eaton geologist 5 hours May to December at \$120/hr	\$ 630.00
M. Kulla field assistant 8 hours May to December at \$55/hr/	462.00
R. Ledoux field assistant 16 hours May to December at \$51/hr	856.80
T. Ledoux field assistant 16 hours May to December at \$51/hr	856.80
J. Itkin office 1.25 hours May to December at \$96/hr	126.00
J. Mariacher 2 hours May to December at \$90/hr	189.00
C. Beck expedite 5 hours May to December at \$81/hr	425.25
L. Smith office 2 hours May to December at \$81/hr	170.10
V. Cournoyer-Derome expedite 3 hours May to December at \$51/hr	160.65
S. Newman office 7 hours May to December at \$68/hr	<u>499.80</u>
	4,376.40

Expenses including management

Field room and board – 5 mandays @ \$195/manday	1,101.75
Trans North Helicopter 1.1 hours Bell 206LR at \$1,485/hr plus fuel	2208.86
ALS Chemex	2,466.77
Report preparation est.	<u>1,000.00</u>
	6,777.38

Total \$11,153.78

82 samples at \$11,153.78 = \$136.02/sample

Note that more than \$3,800 of these expenditures were incurred subsequent to July 20, 2017 to cover the Ellias 15-24 claims.

**APPENDIX III**  
**ROCK SAMPLE DESCRIPTIONS**

---

**Rock Sample Descriptions**

---

Property: Elias

Sample Number: S052402 UTM: 342409 mE Nad83, Zone 8  
Elevation: 6602 m UTM: 6796029 mN

Comments: Brown weathering fine grained quartz with rare fine grained disseminated pyrite and chalcopyrite from "Trench 1". Interior is splotchy grey and tan-green. Sulphides are hosted in darker grey patches. Only piece found in trench.

---

Sample Number: S052403 UTM: 342408 mE Nad83, Zone 8  
Elevation: 6596 m UTM: 6796031 mN

Comments: Granular to coarse quartz cobble 2m uphill from Trench 1. Drusy/cavity filling/comb-like quartz in a breccia-like cobble with small grey patches (<cm) of fine grained disseminated sulphides.

---

Sample Number: S052404 UTM: 342552 mE Nad83, Zone 8  
Elevation: 6243 m UTM: 6795807 mN

Comments: Somewhat banded coarse quartz with grey and green-brown bands, rare fine grained disseminated pyrite and chalcopyrite. From talus along strike of the structure (SE) below Trench 1. No other pieces seen in talus and boulders of foliated gneiss (metamorphosed granitoid?)

---

Sample Number: S052405 UTM: 342603 mE Nad83, Zone 8  
Elevation: 6140 m UTM: 6795727 mN

Comments: Massive quartz cobble with drusy quartz and rare pods of fine grained sulphides. Only piece found in talus of gneiss/granitoid

---

Sample Number: S052406 UTM: 342880 mE Nad83, Zone 8  
Elevation: 5684 m UTM: 6795426 mN

Comments: Resample of R1220...(rest is faded). Massive brown quartz with minor limonitic patches, rusty stains and a light green tint in some areas. Near bottom of cliffy section of the main feature, near valley bottom. A few cobbles/pebbles and a large boulder in the area.

---



---

**Rock Sample Descriptions**Property: Elias

---

Sample Number: S052407 UTM: 343250 mE Nad83, Zone 8  
Elevation: 5644 m UTM: 6794759 mN

Comments: Very fine grained brown-weathering to rusty orange-brown dyke (?). Light grey inside with rare fine grained disseminated sulphides (pyrite and chalcopyrite) and a small veinlet similarly mineralized. From gneiss/granitoid talus in a small rock chute. ~5% of rock in the chute

---

Sample Number: S052408 UTM: 343340 mE Nad83, Zone 8  
Elevation: 5854 m UTM: 6794718 mN

Comments: Rusty brown weathering fine grained quartz-carbonate with green tint, rusty splotches and rare fine grained disseminated pyrite. From talus of light grey granitoid/gneiss.

---

**APPENDIX IV**  
**CERTIFICATES OF ANALYSIS**



ALS Canada Ltd.  
 2103 Dollarton Hwy  
 North Vancouver BC V7H 0A7  
 Phone: +1 (604) 984 0221 Fax: +1 (604) 984 0218  
 www.alsglobal.com/geochemistry

To: **STRATEGIC METALS LTD.**  
**C/ O ARCHER, CATHRO & ASSOCIATES (1981)**  
**LIMITED**  
**1016- 510 W HASTINGS ST**  
**VANCOUVER BC V6B 1L8**

**Page: 1**  
**Total # Pages: 2 (A - D)**  
**Plus Appendix Pages**  
**Finalized Date: 21- SEP- 2017**  
**Account: MTT**

**CERTIFICATE WH17174133**

Project: Ellias

This report is for 7 Rock samples submitted to our lab in Whitehorse, YT, Canada on 16- AUG- 2017.

The following have access to data associated with this certificate:

ANDREW CARNE	JOAN MARIACHER	JACK MORTON
--------------	----------------	-------------

SAMPLE PREPARATION	
ALS CODE	DESCRIPTION
WEI- 21	Received Sample Weight
LOG- 21	Sample logging - ClientBarCode
CRU- QC	Crushing QC Test
PUL- QC	Pulverizing QC Test
CRU- 31	Fine crushing - 70% <2mm
SPL- 21	Split sample - riffle splitter
PUL- 31	Pulverize split to 85% < 75 um

ANALYTICAL PROCEDURES		
ALS CODE	DESCRIPTION	INSTRUMENT
Au- ICP21	Au 30g FA ICP- AES Finish	ICP- AES
ME- MS41	Ultra Trace Aqua Regia ICP- MS	

To: **STRATEGIC METALS LTD.**  
**ATTN: JOAN MARIACHER**  
**C/ O ARCHER, CATHRO & ASSOCIATES (1981) LIMITED**  
**1016- 510 W HASTINGS ST**  
**VANCOUVER BC V6B 1L8**

This is the Final Report and supersedes any preliminary report with this certificate number. Results apply to samples as submitted. All pages of this report have been checked and approved for release.

\*\*\*\*\* See Appendix Page for comments regarding this certificate \*\*\*\*\*

**Signature:**   
 Colin Ramshaw, Vancouver Laboratory Manager



ALS Canada Ltd.  
 2103 Dollarton Hwy  
 North Vancouver BC V7H 0A7  
 Phone: +1 (604) 984 0221 Fax: +1 (604) 984 0218  
 www.alsglobal.com/geochemistry

To: STRATEGIC METALS LTD.  
 C/ O ARCHER, CATHRO & ASSOCIATES (1981)  
 LIMITED  
 1016- 510 W HASTINGS ST  
 VANCOUVER BC V6B 1L8

Page: 2 - A  
 Total # Pages: 2 (A - D)  
 Plus Appendix Pages  
 Finalized Date: 21- SEP- 2017  
 Account: MTT

Project: Ellias

<b>CERTIFICATE OF ANALYSIS WH17174133</b>
---

Sample Description	Method Analyte Units LOR	WEI- 21 Recvd Wt. kg	Au- ICP21 Au ppm	ME- MS41 Ag ppm	ME- MS41 Al %	ME- MS41 As ppm	ME- MS41 Au ppm	ME- MS41 B ppm	ME- MS41 Ba ppm	ME- MS41 Be ppm	ME- MS41 Bi ppm	ME- MS41 Ca %	ME- MS41 Cd ppm	ME- MS41 Ce ppm	ME- MS41 Co ppm	ME- MS41 Cr ppm
		0.02	0.001	0.01	0.01	0.1	0.02	10	10	0.05	0.01	0.01	0.01	0.02	0.1	1
S052402		0.85	2.65	0.35	0.10	5180	2.35	<10	20	0.06	0.06	0.01	0.07	1.65	0.8	15
S052403		0.66	1.380	10.90	0.09	1780	1.23	<10	20	0.07	0.05	0.01	0.06	1.83	0.8	15
S052404		1.13	5.87	0.74	0.08	9080	5.82	<10	70	<0.05	0.02	0.01	0.09	0.84	0.4	15
S052405		1.10	1.080	0.59	0.15	1290	1.06	<10	20	0.07	0.02	0.02	0.11	3.12	0.8	17
S052406		1.05	1.980	3.51	0.19	2320	2.03	<10	50	0.14	0.05	0.03	0.11	9.14	1.8	23
S052407		0.70	0.025	0.10	1.09	42.4	0.03	<10	300	0.37	0.06	3.31	0.12	43.8	10.4	2
S052408		0.75	0.025	0.37	0.54	148.0	0.02	<10	230	0.40	0.10	10.10	0.37	14.35	46.5	232



ALS Canada Ltd.  
 2103 Dollarton Hwy  
 North Vancouver BC V7H 0A7  
 Phone: +1 (604) 984 0221 Fax: +1 (604) 984 0218  
 www.alsglobal.com/geochemistry

To: STRATEGIC METALS LTD.  
 C/ O ARCHER, CATHRO & ASSOCIATES (1981)  
 LIMITED  
 1016- 510 W HASTINGS ST  
 VANCOUVER BC V6B 1L8

Page: 2 - B  
 Total # Pages: 2 (A - D)  
 Plus Appendix Pages  
 Finalized Date: 21- SEP- 2017  
 Account: MTT

Project: Ellias

<b>CERTIFICATE OF ANALYSIS WH17174133</b>
---

Sample Description	Method Analyte Units LOR	ME- MS41 Cs ppm 0.05	ME- MS41 Cu ppm 0.2	ME- MS41 Fe % 0.01	ME- MS41 Ga ppm 0.05	ME- MS41 Ge ppm 0.05	ME- MS41 Hf ppm 0.02	ME- MS41 Hg ppm 0.01	ME- MS41 In ppm 0.005	ME- MS41 K % 0.01	ME- MS41 La ppm 0.2	ME- MS41 Li ppm 0.1	ME- MS41 Mg % 0.01	ME- MS41 Mn ppm 5	ME- MS41 Mo ppm 0.05	ME- MS41 Na % 0.01
S052402		0.12	109.5	1.29	0.32	<0.05	<0.02	0.01	0.017	0.04	0.8	0.8	0.01	46	0.22	<0.01
S052403		0.10	18.7	0.71	0.34	<0.05	<0.02	<0.01	0.008	0.05	0.9	0.6	0.01	36	0.19	<0.01
S052404		0.09	26.5	1.22	0.26	<0.05	<0.02	0.02	0.020	0.04	0.5	0.6	<0.01	49	0.18	<0.01
S052405		0.22	10.1	0.97	0.63	<0.05	<0.02	0.02	0.005	0.06	1.5	0.5	0.01	48	0.45	<0.01
S052406		0.26	16.0	1.22	0.50	<0.05	0.02	0.03	0.010	0.08	4.1	0.6	0.01	75	0.52	<0.01
S052407		0.25	3.4	4.82	2.92	0.11	0.05	0.03	0.041	0.23	18.6	4.2	0.84	864	1.32	0.02
S052408		0.30	111.0	5.42	2.88	0.08	<0.02	0.03	0.077	0.12	5.5	4.8	4.32	1640	0.32	<0.01



ALS Canada Ltd.  
 2103 Dollarton Hwy  
 North Vancouver BC V7H 0A7  
 Phone: +1 (604) 984 0221 Fax: +1 (604) 984 0218  
 www.alsglobal.com/geochemistry

To: STRATEGIC METALS LTD.  
 C/ O ARCHER, CATHRO & ASSOCIATES (1981)  
 LIMITED  
 1016- 510 W HASTINGS ST  
 VANCOUVER BC V6B 1L8

Page: 2 - C  
 Total # Pages: 2 (A - D)  
 Plus Appendix Pages  
 Finalized Date: 21- SEP- 2017  
 Account: MTT

Project: Ellias

CERTIFICATE OF ANALYSIS	WH17174133
-------------------------	------------

Sample Description	Method	Analyte	Units	LOR	ME- MS41	ME- MS41	ME- MS41	ME- MS41	ME- MS41	ME- MS41	ME- MS41	ME- MS41	ME- MS41	ME- MS41	ME- MS41	ME- MS41			
					Nb	Ni	P	Pb	Rb	Re	S	Sb	Sc	Se	Sn	Sr	Ta	Te	Th
					ppm	ppm	ppm	ppm	ppm	ppm	%	ppm	ppm	ppm	ppm	ppm	ppm	ppm	ppm
					0.05	0.2	10	0.2	0.1	0.001	0.01	0.05	0.1	0.2	0.2	0.2	0.01	0.01	0.2
S052402					<0.05	2.6	100	12.1	2.1	<0.001	0.83	59.0	1.9	5.3	0.3	1.3	<0.01	0.02	0.2
S052403					<0.05	2.1	30	26.9	2.2	<0.001	0.26	806	0.5	3.3	0.2	2.0	<0.01	<0.01	0.2
S052404					<0.05	1.6	150	3.4	1.5	<0.001	0.24	148.5	2.7	2.9	<0.2	2.4	<0.01	0.01	<0.2
S052405					<0.05	2.5	40	2.8	2.9	<0.001	0.06	21.0	0.8	0.6	<0.2	3.7	<0.01	0.09	0.3
S052406					<0.05	6.9	80	7.0	3.9	<0.001	0.02	66.2	1.7	0.5	<0.2	18.6	<0.01	0.95	0.7
S052407					<0.05	3.1	2970	5.5	7.1	<0.001	0.42	2.19	5.3	1.1	<0.2	255	<0.01	0.02	1.1
S052408					<0.05	29.7	180	6.8	4.0	<0.001	0.33	12.50	57.0	1.3	<0.2	1325	<0.01	0.12	0.2

\*\*\*\*\* See Appendix Page for comments regarding this certificate \*\*\*\*\*



ALS Canada Ltd.  
 2103 Dollarton Hwy  
 North Vancouver BC V7H 0A7  
 Phone: +1 (604) 984 0221 Fax: +1 (604) 984 0218  
 www.alsglobal.com/geochemistry

To: **STRATEGIC METALS LTD.**  
**C/ O ARCHER, CATHRO & ASSOCIATES (1981)**  
**LIMITED**  
**1016- 510 W HASTINGS ST**  
**VANCOUVER BC V6B 1L8**

Page: 2 - D  
 Total # Pages: 2 (A - D)  
 Plus Appendix Pages  
 Finalized Date: 21- SEP- 2017  
 Account: MTT

Project: Ellias

<b>CERTIFICATE OF ANALYSIS WH17174133</b>
---

Sample Description	Method Analyte Units LOR	ME- MS41 Ti %	ME- MS41 Ti ppm	ME- MS41 U ppm	ME- MS41 V ppm	ME- MS41 W ppm	ME- MS41 Y ppm	ME- MS41 Zn ppm	ME- MS41 Zr ppm
		0.005	0.02	0.05	1	0.05	0.05	2	0.5
S052402		<0.005	0.02	0.20	2	0.05	0.29	17	<0.5
S052403		<0.005	0.02	0.18	2	<0.05	0.51	8	<0.5
S052404		<0.005	0.02	0.14	2	<0.05	0.23	9	<0.5
S052405		<0.005	0.02	0.31	7	<0.05	1.11	12	<0.5
S052406		<0.005	0.03	0.15	5	<0.05	1.79	20	0.7
S052407		<0.005	0.06	0.27	13	<0.05	17.55	113	2.8
S052408		<0.005	0.04	0.19	89	<0.05	14.85	79	<0.5



ALS Canada Ltd.  
 2103 Dollarton Hwy  
 North Vancouver BC V7H 0A7  
 Phone: +1 (604) 984 0221 Fax: +1 (604) 984 0218  
 www.alsglobal.com/geochemistry

To: STRATEGIC METALS LTD.  
 C/ O ARCHER, CATHRO & ASSOCIATES (1981)  
 LIMITED  
 1016- 510 W HASTINGS ST  
 VANCOUVER BC V6B 1L8

Page: Appendix 1  
 Total # Appendix Pages: 1  
 Finalized Date: 21- SEP- 2017  
 Account: MTT

Project: Ellias

<b>CERTIFICATE OF ANALYSIS WH17174133</b>
---

	<b>CERTIFICATE COMMENTS</b>								
Applies to Method:	<p style="text-align: center;"><b>ANALYTICAL COMMENTS</b></p> <p>Gold determinations by this method are semi- quantitative due to the small sample weight used (0.5g).            ME- MS41</p>								
Applies to Method:	<p style="text-align: center;"><b>LABORATORY ADDRESSES</b></p> <p>Processed at ALS Whitehorse located at 78 Mt. Sima Rd, Whitehorse, YT, Canada.</p> <table style="width: 100%; border: none;"> <tr> <td style="width: 33%;">CRU- 31</td> <td style="width: 33%;">CRU- QC</td> <td style="width: 33%;">LOG- 21</td> <td style="width: 33%;">PUL- 31</td> </tr> <tr> <td>PUL- QC</td> <td>SPL- 21</td> <td>WEI- 21</td> <td></td> </tr> </table>	CRU- 31	CRU- QC	LOG- 21	PUL- 31	PUL- QC	SPL- 21	WEI- 21	
CRU- 31	CRU- QC	LOG- 21	PUL- 31						
PUL- QC	SPL- 21	WEI- 21							
Applies to Method:	<p>Processed at ALS Vancouver located at 2103 Dollarton Hwy, North Vancouver, BC, Canada.</p> <table style="width: 100%; border: none;"> <tr> <td style="width: 50%;">Au- ICP21</td> <td style="width: 50%;">ME- MS41</td> </tr> </table>	Au- ICP21	ME- MS41						
Au- ICP21	ME- MS41								





ALS Canada Ltd.  
 2103 Dollarton Hwy  
 North Vancouver BC V7H 0A7  
 Phone: +1 (604) 984 0221 Fax: +1 (604) 984 0218  
 www.alsglobal.com/geochemistry

To: **STRATEGIC METALS LTD.**  
**C/ O ARCHER, CATHRO & ASSOCIATES (1981)**  
**LIMITED**  
**1016- 510 W HASTINGS ST**  
**VANCOUVER BC V6B 1L8**

**Page: 1**  
**Total # Pages: 3 (A - D)**  
**Plus Appendix Pages**  
**Finalized Date: 18- SEP- 2017**  
**Account: MTT**

**CERTIFICATE WH17174139**

Project: Ellias

This report is for 75 Soil samples submitted to our lab in Whitehorse, YT, Canada on 16- AUG- 2017.

The following have access to data associated with this certificate:

ANDREW CARNE	JOAN MARIACHER	JACK MORTON
--------------	----------------	-------------

SAMPLE PREPARATION	
ALS CODE	DESCRIPTION
WEI- 21	Received Sample Weight
LOG- 22	Sample login - Rcd w/o BarCode
SCR- 41	Screen to - 180um and save both

ANALYTICAL PROCEDURES		
ALS CODE	DESCRIPTION	INSTRUMENT
Au- ICP21	Au 30g FA ICP- AES Finish	ICP- AES
ME- MS41	Ultra Trace Aqua Regia ICP- MS	

To: **STRATEGIC METALS LTD.**  
**ATTN: JOAN MARIACHER**  
**C/ O ARCHER, CATHRO & ASSOCIATES (1981) LIMITED**  
**1016- 510 W HASTINGS ST**  
**VANCOUVER BC V6B 1L8**

This is the Final Report and supersedes any preliminary report with this certificate number. Results apply to samples as submitted. All pages of this report have been checked and approved for release.

\*\*\*\*\* See Appendix Page for comments regarding this certificate \*\*\*\*\*

**Signature:**   
 Colin Ramshaw, Vancouver Laboratory Manager



ALS Canada Ltd.  
 2103 Dollarton Hwy  
 North Vancouver BC V7H 0A7  
 Phone: +1 (604) 984 0221 Fax: +1 (604) 984 0218  
 www.alsglobal.com/geochemistry

To: STRATEGIC METALS LTD.  
 C/ O ARCHER, CATHRO & ASSOCIATES (1981)  
 LIMITED  
 1016- 510 W HASTINGS ST  
 VANCOUVER BC V6B 1L8

Page: 2 - A  
 Total # Pages: 3 (A - D)  
 Plus Appendix Pages  
 Finalized Date: 18- SEP- 2017  
 Account: MTT

Project: Ellias

**CERTIFICATE OF ANALYSIS WH17174139**

Sample Description	Method	WEI- 21	ME- MS41	ME- MS41	ME- MS41	ME- MS41	ME- MS41	ME- MS41	ME- MS41	ME- MS41	ME- MS41	ME- MS41	ME- MS41	ME- MS41	ME- MS41	ME- MS41
	Analyte	Recvd Wt.	Ag	Al	As	Au	B	Ba	Be	Bi	Ca	Cd	Ce	Co	Cr	Cs
Units		kg	ppm	%	ppm	ppm	ppm	ppm	ppm	ppm	%	ppm	ppm	ppm	ppm	ppm
LOR		0.02	0.01	0.01	0.1	0.02	10	10	0.05	0.01	0.01	0.01	0.02	0.1	1	0.05
ZZ122654		0.16	0.18	2.65	36.3	<0.02	<10	170	0.99	0.18	0.36	0.14	18.70	25.3	67	2.32
ZZ122655		0.15	0.18	2.27	8.7	<0.02	<10	160	0.84	0.15	0.40	0.22	17.85	23.6	50	1.69
ZZ122656		0.29	0.13	2.84	9.1	<0.02	<10	180	1.04	0.16	0.29	0.14	20.4	25.9	72	2.24
ZZ122657		0.17	0.13	2.86	10.2	<0.02	<10	170	0.95	0.16	0.25	0.15	21.6	21.6	74	2.27
ZZ122658		0.23	0.04	2.22	8.3	<0.02	<10	190	0.72	0.33	0.29	0.14	17.25	16.6	61	2.01
ZZ122659		0.14	0.07	2.22	8.5	<0.02	<10	170	0.71	0.12	0.27	0.18	15.15	19.3	55	1.78
ZZ122660		0.21	0.15	2.61	8.7	<0.02	<10	240	0.88	0.15	0.30	0.13	15.70	18.9	72	2.30
ZZ122661		0.20	0.21	2.76	34.9	<0.02	<10	240	0.95	0.18	0.33	0.15	15.00	21.9	81	3.07
ZZ122662		0.32	0.12	2.63	14.7	<0.02	<10	200	0.86	0.13	0.27	0.15	16.20	16.0	67	2.13
ZZ122663		0.30	0.14	2.62	12.6	<0.02	<10	180	0.91	0.14	0.26	0.13	18.50	13.5	67	2.28
ZZ122664		0.20	0.03	2.06	7.0	<0.02	<10	120	0.62	0.10	0.24	0.14	16.95	12.3	57	1.48
ZZ122665		0.21	0.15	2.45	7.7	<0.02	<10	150	0.83	0.13	0.26	0.10	16.40	13.8	62	1.91
ZZ122666		0.26	0.36	2.84	9.7	0.02	<10	190	0.88	0.16	0.26	0.08	21.7	15.9	60	1.95
ZZ122667		0.20	0.16	2.96	8.4	<0.02	<10	260	1.05	0.14	0.29	0.14	17.65	15.9	75	2.32
ZZ122668		0.27	0.10	2.73	5.8	<0.02	<10	230	0.75	0.09	0.27	0.12	16.10	16.8	78	2.20
ZZ122669		0.16	0.09	2.27	8.8	0.02	<10	170	0.70	0.15	0.31	0.15	15.35	13.7	63	1.85
ZZ122670		0.15	0.13	2.55	6.6	<0.02	<10	220	0.83	0.11	0.25	0.10	12.75	13.9	72	2.07
ZZ122671		0.22	0.05	3.13	6.9	<0.02	<10	210	1.00	0.13	0.19	0.13	15.20	22.1	88	3.01
ZZ122672		0.20	0.18	2.83	7.4	<0.02	<10	220	1.03	0.13	0.31	0.14	17.60	18.6	73	2.13
ZZ122673		0.30	0.10	2.65	6.5	<0.02	<10	220	0.87	0.10	0.32	0.14	15.30	15.6	77	2.16
ZZ122674		0.33	0.07	2.21	5.9	<0.02	<10	210	0.71	0.07	0.34	0.22	18.55	13.9	62	1.78
ZZ122675		0.28	0.17	2.77	5.9	<0.02	<10	230	0.96	0.10	0.28	0.09	16.35	16.4	77	2.32
ZZ122676		0.14	0.24	2.75	6.7	<0.02	<10	200	0.96	0.11	0.30	0.09	17.05	14.7	71	2.08
ZZ122677		0.24	0.08	2.33	5.8	<0.02	<10	180	0.71	0.08	0.25	0.15	14.15	12.5	66	1.77
ZZ122678		0.21	0.16	2.72	7.4	<0.02	<10	180	0.93	0.11	0.22	0.09	18.15	16.4	70	2.11
ZZ122679		0.18	0.05	2.48	7.1	<0.02	<10	240	0.71	0.08	0.32	0.13	16.15	14.9	76	2.15
ZZ122680		0.23	0.09	1.96	9.2	<0.02	<10	150	0.56	0.12	0.27	0.22	15.20	10.7	57	1.77
ZZ122681		0.48	0.13	2.75	29.6	<0.02	<10	190	0.75	0.10	0.29	0.12	19.55	14.3	80	2.30
ZZ122682		0.30	0.13	2.56	11.7	<0.02	<10	230	0.79	0.09	0.26	0.15	13.35	11.8	76	2.23
ZZ122683		0.29	0.17	1.62	4.6	<0.02	<10	140	0.58	0.08	0.21	0.15	8.90	10.8	47	1.52
ZZ122684		0.19	0.04	2.57	16.5	<0.02	<10	230	0.79	0.07	0.31	0.15	16.00	16.3	80	2.04
ZZ122685		0.20	0.13	2.26	5.4	0.20	<10	210	0.72	0.08	0.31	0.15	17.45	12.5	61	1.72
ZZ122686		0.35	0.11	2.40	6.4	<0.02	<10	190	0.79	0.09	0.26	0.10	14.55	13.1	65	1.86
ZZ122687		0.42	0.17	2.63	25.8	<0.02	<10	240	0.77	0.09	0.25	0.10	15.85	13.2	72	2.26
ZZ122688		0.22	0.05	2.29	8.3	<0.02	<10	190	0.71	0.08	0.27	0.15	16.75	13.1	66	1.81
ZZ122689		0.24	0.05	2.20	7.5	<0.02	<10	180	0.73	0.10	0.27	0.12	16.15	14.0	64	1.84
ZZ122690		0.18	0.08	2.74	12.6	<0.02	<10	260	0.85	0.09	0.33	0.14	16.10	16.9	80	2.35
ZZ122691		0.18	0.12	2.68	9.7	<0.02	<10	220	0.88	0.13	0.28	0.27	19.60	15.7	60	1.91
ZZ122907		0.30	0.06	2.26	11.2	<0.02	<10	170	0.72	0.10	0.25	0.18	18.25	15.3	62	1.87
ZZ122908		0.30	0.18	2.85	21.7	<0.02	<10	180	0.95	0.15	0.28	0.14	18.20	18.5	71	2.15



ALS Canada Ltd.  
 2103 Dollarton Hwy  
 North Vancouver BC V7H 0A7  
 Phone: +1 (604) 984 0221 Fax: +1 (604) 984 0218  
 www.alsglobal.com/geochemistry

To: STRATEGIC METALS LTD.  
 C/ O ARCHER, CATHRO & ASSOCIATES (1981)  
 LIMITED  
 1016- 510 W HASTINGS ST  
 VANCOUVER BC V6B 1L8

Page: 2 - B  
 Total # Pages: 3 (A - D)  
 Plus Appendix Pages  
 Finalized Date: 18- SEP- 2017  
 Account: MTT

Project: Ellias

**CERTIFICATE OF ANALYSIS WH17174139**

Sample Description	Method Analyte Units LOR	ME- MS41	ME- MS41	ME- MS41	ME- MS41	ME- MS41	ME- MS41	ME- MS41	ME- MS41	ME- MS41	ME- MS41	ME- MS41	ME- MS41	ME- MS41	ME- MS41	
		Cu ppm	Fe %	Ga ppm	Ge ppm	Hf ppm	Hg ppm	In ppm	K %	La ppm	Li ppm	Mg %	Mn ppm	Mo ppm	Na %	Nb ppm
		0.2	0.01	0.05	0.05	0.02	0.01	0.005	0.01	0.2	0.1	0.01	5	0.05	0.01	0.05
ZZ122654		56.3	4.05	8.78	0.05	0.02	0.06	0.038	0.28	7.5	27.3	0.88	854	1.82	0.02	2.12
ZZ122655		49.9	3.41	7.23	<0.05	0.02	0.07	0.029	0.16	7.2	20.3	0.70	964	1.52	0.02	1.42
ZZ122656		59.3	4.00	8.82	0.05	0.02	0.04	0.044	0.33	8.4	26.4	0.90	845	1.49	0.02	2.32
ZZ122657		57.2	4.32	9.44	0.05	0.02	0.04	0.043	0.28	8.9	25.0	0.91	874	2.06	0.01	2.05
ZZ122658		57.9	3.38	7.13	0.06	0.04	0.01	0.031	0.42	6.9	29.4	0.74	480	0.82	0.02	2.37
ZZ122659		47.0	3.25	7.13	<0.05	0.02	0.04	0.030	0.31	6.0	21.3	0.70	662	1.07	0.02	1.80
ZZ122660		52.4	4.14	9.18	0.05	0.02	0.03	0.043	0.43	6.5	26.5	0.86	706	1.57	0.02	2.22
ZZ122661		55.3	4.35	10.10	0.06	<0.02	0.02	0.049	0.57	6.2	28.0	0.96	756	1.87	0.02	2.66
ZZ122662		43.0	3.81	8.44	<0.05	0.02	0.03	0.042	0.36	6.8	24.6	0.86	647	1.21	0.02	2.03
ZZ122663		50.3	4.01	8.21	<0.05	<0.02	0.02	0.046	0.30	7.8	22.2	0.82	344	0.96	0.01	1.79
ZZ122664		33.0	3.30	6.77	<0.05	0.02	0.03	0.030	0.21	6.8	22.6	0.71	451	0.94	0.01	1.72
ZZ122665		45.7	3.80	8.21	<0.05	0.02	0.04	0.030	0.23	7.0	21.5	0.78	505	1.49	0.01	1.80
ZZ122666		49.9	4.19	8.65	<0.05	0.02	0.05	0.034	0.16	10.2	22.0	0.77	689	1.47	0.01	1.45
ZZ122667		44.6	4.28	9.36	<0.05	<0.02	0.04	0.040	0.32	7.3	26.6	0.88	683	1.21	0.01	2.08
ZZ122668		50.1	4.06	9.21	0.05	<0.02	0.03	0.042	0.48	6.8	23.4	0.95	676	0.89	0.02	2.29
ZZ122669		35.9	3.98	8.66	<0.05	0.02	0.04	0.032	0.14	6.5	22.0	0.78	523	1.84	0.01	1.91
ZZ122670		42.4	3.70	8.81	0.05	<0.02	0.03	0.039	0.44	5.5	24.0	0.83	518	1.13	0.02	2.26
ZZ122671		45.5	4.41	10.05	0.05	<0.02	0.04	0.045	0.48	6.3	25.4	1.15	831	1.27	0.01	2.37
ZZ122672		49.0	4.04	8.75	0.05	0.02	0.04	0.036	0.38	7.3	23.6	0.91	731	1.27	0.02	2.16
ZZ122673		41.1	3.99	8.66	0.05	0.02	0.02	0.037	0.43	6.4	25.8	0.92	534	1.02	0.02	2.74
ZZ122674		40.4	3.21	7.57	0.07	0.02	0.02	0.034	0.39	7.3	22.6	0.78	427	0.71	0.02	2.46
ZZ122675		45.0	3.79	9.97	0.07	0.02	0.03	0.046	0.50	7.0	27.3	0.92	506	1.15	0.02	2.86
ZZ122676		48.4	3.92	8.73	<0.05	0.02	0.06	0.042	0.33	7.2	23.5	0.88	516	1.36	0.02	2.11
ZZ122677		33.9	3.60	7.99	<0.05	0.02	0.03	0.034	0.36	5.8	23.2	0.76	430	1.00	0.01	2.29
ZZ122678		40.2	3.99	8.73	<0.05	<0.02	0.03	0.044	0.24	7.5	25.0	0.84	650	0.92	0.01	1.86
ZZ122679		43.3	3.79	8.63	0.09	0.02	0.02	0.040	0.57	6.7	24.4	0.92	498	0.75	0.02	2.53
ZZ122680		32.7	3.38	7.80	<0.05	0.02	0.03	0.028	0.18	6.5	17.7	0.66	421	1.31	0.01	1.65
ZZ122681		40.8	3.73	8.57	<0.05	<0.02	0.02	0.042	0.39	8.3	22.8	0.96	343	0.62	0.01	1.73
ZZ122682		32.6	3.62	8.46	0.05	<0.02	0.02	0.044	0.43	5.6	24.6	0.87	351	0.58	0.01	2.37
ZZ122683		28.6	2.96	6.42	<0.05	<0.02	0.03	0.027	0.24	4.2	13.6	0.53	531	0.88	0.01	1.39
ZZ122684		39.9	3.78	8.19	0.07	0.02	0.01	0.043	0.48	6.6	23.9	0.94	620	0.66	0.02	2.11
ZZ122685		34.3	3.20	7.09	0.07	0.02	0.03	0.030	0.37	7.2	22.6	0.74	499	0.73	0.02	2.27
ZZ122686		36.5	3.51	7.42	0.06	0.02	0.02	0.028	0.42	6.2	22.2	0.80	502	0.92	0.02	2.48
ZZ122687		39.0	3.59	8.33	0.06	0.02	0.02	0.039	0.47	7.1	24.4	0.88	490	0.78	0.02	2.14
ZZ122688		36.7	3.42	7.39	0.07	0.02	0.03	0.034	0.40	7.1	25.4	0.79	443	0.76	0.02	2.52
ZZ122689		34.6	3.49	7.74	0.05	0.02	0.03	0.034	0.32	6.3	25.0	0.78	465	1.00	0.02	2.19
ZZ122690		44.9	3.93	8.86	0.07	0.02	0.02	0.038	0.50	6.4	27.8	0.96	643	0.85	0.02	2.51
ZZ122691		42.9	3.72	8.59	0.06	0.02	0.04	0.038	0.31	8.3	24.4	0.82	625	1.43	0.02	2.00
ZZ122907		40.2	3.46	7.36	0.06	0.02	0.02	0.030	0.33	7.3	24.2	0.76	565	0.94	0.02	2.12
ZZ122908		48.6	4.15	8.95	<0.05	<0.02	0.04	0.036	0.31	7.6	25.5	0.85	768	1.53	0.02	2.03



ALS Canada Ltd.  
 2103 Dollarton Hwy  
 North Vancouver BC V7H 0A7  
 Phone: +1 (604) 984 0221 Fax: +1 (604) 984 0218  
 www.alsglobal.com/geochemistry

To: STRATEGIC METALS LTD.  
 C/ O ARCHER, CATHRO & ASSOCIATES (1981)  
 LIMITED  
 1016- 510 W HASTINGS ST  
 VANCOUVER BC V6B 1L8

Page: 2 - C  
 Total # Pages: 3 (A - D)  
 Plus Appendix Pages  
 Finalized Date: 18- SEP- 2017  
 Account: MTT

Project: Ellias

**CERTIFICATE OF ANALYSIS WH17174139**

Sample Description	Method Analyte Units LOR	ME- MS41	ME- MS41	ME- MS41	ME- MS41	ME- MS41	ME- MS41	ME- MS41	ME- MS41	ME- MS41	ME- MS41	ME- MS41	ME- MS41	ME- MS41	ME- MS41	
		Ni	P	Pb	Rb	Re	S	Sb	Sc	Se	Sn	Sr	Ta	Te	Th	Ti
		ppm	ppm	ppm	ppm	ppm	%	ppm	ppm	ppm	ppm	ppm	ppm	ppm	ppm	%
		0.2	10	0.2	0.1	0.001	0.01	0.05	0.1	0.2	0.2	0.2	0.01	0.01	0.2	0.005
ZZ122654		48.9	1000	7.6	29.5	0.001	0.11	0.97	7.1	0.8	0.5	29.2	<0.01	0.07	0.6	0.186
ZZ122655		39.0	1290	6.8	20.1	<0.001	0.13	0.53	4.1	0.9	0.4	29.5	<0.01	0.06	0.3	0.122
ZZ122656		49.6	1050	6.6	30.4	<0.001	0.08	0.52	7.8	0.8	0.5	23.4	<0.01	0.05	0.8	0.205
ZZ122657		44.9	950	8.0	34.7	<0.001	0.07	0.64	7.2	1.1	0.6	24.8	<0.01	0.08	0.6	0.195
ZZ122658		50.9	930	4.3	30.1	<0.001	0.02	0.33	7.7	0.7	0.5	19.3	<0.01	0.10	1.4	0.210
ZZ122659		39.3	910	5.3	25.9	<0.001	0.06	0.47	6.1	0.5	0.4	21.2	<0.01	0.05	0.5	0.173
ZZ122660		44.6	1030	6.2	36.5	0.001	0.10	1.19	7.6	0.7	0.6	27.1	<0.01	0.06	0.5	0.201
ZZ122661		50.4	1240	13.7	41.6	0.002	0.07	4.04	9.9	0.5	0.7	26.4	<0.01	0.06	0.6	0.213
ZZ122662		42.4	890	7.5	30.5	<0.001	0.05	1.77	7.9	0.7	0.6	22.1	<0.01	0.06	0.7	0.183
ZZ122663		43.7	1000	8.8	26.0	<0.001	0.05	2.59	8.7	0.8	0.5	17.8	<0.01	0.04	0.8	0.136
ZZ122664		33.2	600	5.4	19.4	<0.001	0.04	0.42	5.3	0.5	0.4	18.5	<0.01	0.03	0.6	0.157
ZZ122665		39.1	970	7.4	25.6	<0.001	0.09	0.55	5.7	0.7	0.5	24.1	<0.01	0.04	0.4	0.159
ZZ122666		39.8	1460	8.1	19.3	<0.001	0.14	0.81	4.8	1.0	0.5	24.2	<0.01	0.07	0.3	0.116
ZZ122667		43.4	1180	8.1	30.4	<0.001	0.08	0.89	7.1	0.8	0.5	24.4	<0.01	0.06	0.5	0.171
ZZ122668		44.6	830	6.9	33.1	<0.001	0.03	0.70	9.6	0.5	0.5	22.2	<0.01	0.06	0.9	0.211
ZZ122669		36.1	790	8.1	21.0	<0.001	0.08	0.67	5.3	0.5	0.5	25.1	<0.01	0.06	0.4	0.158
ZZ122670		42.3	940	5.4	33.8	<0.001	0.08	0.43	7.5	0.7	0.5	22.5	<0.01	0.05	0.4	0.202
ZZ122671		47.9	800	7.4	42.2	<0.001	0.05	0.89	8.5	0.6	0.6	18.8	<0.01	0.05	0.5	0.229
ZZ122672		45.1	990	6.5	32.1	<0.001	0.08	0.48	7.3	0.6	0.5	27.9	<0.01	0.06	0.5	0.193
ZZ122673		42.6	700	5.9	33.8	<0.001	0.03	0.39	8.7	0.5	0.5	22.5	<0.01	0.05	0.9	0.243
ZZ122674		38.9	850	4.3	29.6	<0.001	0.02	0.33	7.9	0.5	0.4	23.3	<0.01	0.04	1.1	0.209
ZZ122675		46.6	890	5.5	39.5	<0.001	0.05	0.35	9.6	0.7	0.5	22.6	<0.01	0.03	0.8	0.240
ZZ122676		41.7	1140	6.7	30.4	<0.001	0.13	0.60	6.6	0.5	0.5	28.3	<0.01	0.05	0.3	0.165
ZZ122677		35.2	640	5.2	29.5	<0.001	0.04	0.43	6.4	0.5	0.4	19.1	<0.01	0.04	0.5	0.201
ZZ122678		37.6	940	6.9	25.9	<0.001	0.08	0.75	6.9	0.5	0.5	20.8	<0.01	0.05	0.3	0.157
ZZ122679		45.2	770	4.6	38.2	<0.001	0.02	0.70	9.5	0.5	0.5	24.2	<0.01	0.03	1.1	0.247
ZZ122680		31.4	810	6.3	23.1	<0.001	0.06	0.57	4.6	0.5	0.5	22.0	<0.01	0.03	0.3	0.159
ZZ122681		41.0	1110	7.5	29.9	<0.001	0.03	1.85	9.3	0.7	0.5	16.2	<0.01	0.04	1.0	0.172
ZZ122682		36.9	890	5.4	32.5	<0.001	0.04	1.75	9.3	0.6	0.6	18.0	<0.01	0.03	0.7	0.217
ZZ122683		24.4	830	4.8	22.7	<0.001	0.06	0.63	4.6	0.4	0.4	19.7	<0.01	0.03	0.2	0.145
ZZ122684		42.7	760	5.9	31.8	<0.001	0.01	1.57	9.5	0.2	0.5	21.0	<0.01	0.03	1.2	0.212
ZZ122685		35.3	900	4.2	29.9	<0.001	0.04	0.41	6.5	0.4	0.5	21.3	<0.01	0.03	0.7	0.191
ZZ122686		35.7	720	4.8	30.7	<0.001	0.04	0.38	7.2	0.7	0.5	20.6	<0.01	0.03	0.8	0.209
ZZ122687		39.1	650	5.8	34.0	<0.001	0.04	1.37	8.0	0.3	0.5	21.3	<0.01	0.02	0.8	0.191
ZZ122688		38.0	580	4.6	29.7	<0.001	0.03	0.49	7.2	0.3	0.5	20.5	<0.01	0.04	0.8	0.208
ZZ122689		39.0	490	5.7	28.9	<0.001	0.04	0.48	6.4	0.4	0.5	22.7	<0.01	0.04	0.6	0.199
ZZ122690		46.8	860	6.0	37.2	<0.001	0.03	1.33	8.5	0.2	0.5	24.6	<0.01	0.04	0.9	0.233
ZZ122691		37.1	960	7.1	29.8	<0.001	0.07	0.86	6.1	0.7	0.5	28.5	<0.01	0.05	0.4	0.171
ZZ122907		42.0	650	5.5	27.5	<0.001	0.03	0.61	6.6	0.7	0.5	19.8	<0.01	0.05	0.9	0.189
ZZ122908		42.9	1020	7.5	30.3	<0.001	0.09	0.89	6.5	0.7	0.5	25.3	<0.01	0.04	0.5	0.176



ALS Canada Ltd.  
 2103 Dollarton Hwy  
 North Vancouver BC V7H 0A7  
 Phone: +1 (604) 984 0221 Fax: +1 (604) 984 0218  
 www.alsglobal.com/geochemistry

To: STRATEGIC METALS LTD.  
 C/ O ARCHER, CATHRO & ASSOCIATES (1981)  
 LIMITED  
 1016- 510 W HASTINGS ST  
 VANCOUVER BC V6B 1L8

Page: 2 - D  
 Total # Pages: 3 (A - D)  
 Plus Appendix Pages  
 Finalized Date: 18- SEP- 2017  
 Account: MTT

Project: Ellias

**CERTIFICATE OF ANALYSIS WH17174139**

Sample Description	Method Analyte Units LOR	ME- MS41	ME- MS41	ME- MS41	ME- MS41	ME- MS41	ME- MS41	Au- ICP21	
		Tl	U	V	W	Y	Zn	Zr	Au
		ppm	ppm	ppm	ppm	ppm	ppm	ppm	ppm
		0.02	0.05	1	0.05	0.05	2	0.5	0.001
ZZ122654		0.21	0.81	105	0.15	7.18	101	0.8	0.010
ZZ122655		0.18	0.74	86	0.12	7.36	86	0.7	<0.001
ZZ122656		0.23	0.84	110	0.24	8.39	99	0.9	0.005
ZZ122657		0.22	0.90	116	0.13	7.99	96	0.8	0.002
ZZ122658		0.19	0.69	98	0.17	6.99	83	1.2	0.007
ZZ122659		0.19	0.63	91	0.12	5.70	83	0.8	0.002
ZZ122660		0.22	0.78	115	0.14	6.44	92	0.7	0.002
ZZ122661		0.25	0.75	118	0.14	9.34	102	<0.5	0.007
ZZ122662		0.20	0.72	106	0.16	6.22	95	0.5	0.007
ZZ122663		0.19	0.83	104	0.16	8.48	109	<0.5	0.003
ZZ122664		0.15	0.57	88	0.12	4.87	71	0.6	<0.001
ZZ122665		0.18	0.72	102	0.14	5.94	81	0.6	0.002
ZZ122666		0.21	0.99	104	0.14	10.00	85	0.6	<0.001
ZZ122667		0.20	0.83	116	0.15	6.58	96	<0.5	0.002
ZZ122668		0.21	0.65	118	0.13	6.79	99	<0.5	0.001
ZZ122669		0.17	0.66	104	0.13	4.08	95	0.7	0.001
ZZ122670		0.22	0.67	112	0.13	4.94	87	0.5	0.005
ZZ122671		0.26	0.66	126	0.13	4.47	97	0.6	<0.001
ZZ122672		0.22	0.75	111	0.15	6.70	93	0.6	0.002
ZZ122673		0.21	0.57	116	0.13	6.08	88	0.7	0.003
ZZ122674		0.19	0.54	96	0.12	6.91	80	0.8	0.015
ZZ122675		0.25	0.65	117	0.15	6.52	93	0.7	<0.001
ZZ122676		0.22	0.77	108	0.15	8.12	93	0.6	0.003
ZZ122677		0.17	0.52	104	0.12	4.92	78	0.5	0.002
ZZ122678		0.21	0.79	107	0.12	7.49	86	<0.5	0.001
ZZ122679		0.24	0.55	116	0.13	6.55	93	0.7	0.005
ZZ122680		0.17	0.57	100	0.14	4.63	83	0.5	<0.001
ZZ122681		0.18	0.73	106	0.11	9.12	94	<0.5	0.009
ZZ122682		0.19	0.55	112	0.12	6.79	98	<0.5	0.005
ZZ122683		0.13	0.50	91	0.10	3.64	67	<0.5	<0.001
ZZ122684		0.21	0.59	107	0.14	6.82	99	0.6	0.014
ZZ122685		0.18	0.59	94	0.15	6.46	76	0.7	0.005
ZZ122686		0.21	0.61	100	0.14	5.18	79	0.8	0.007
ZZ122687		0.21	0.70	103	0.12	5.21	88	0.5	0.012
ZZ122688		0.19	0.56	100	0.12	5.11	79	0.7	0.006
ZZ122689		0.19	0.51	97	0.15	4.25	79	0.6	<0.001
ZZ122690		0.22	0.67	110	0.15	6.10	97	0.6	0.006
ZZ122691		0.19	0.81	98	0.13	7.39	86	0.6	0.006
ZZ122907		0.18	0.63	97	0.12	6.17	79	0.7	0.003
ZZ122908		0.22	0.87	111	0.14	7.37	93	0.5	0.004



ALS Canada Ltd.  
 2103 Dollarton Hwy  
 North Vancouver BC V7H 0A7  
 Phone: +1 (604) 984 0221 Fax: +1 (604) 984 0218  
 www.alsglobal.com/geochemistry

To: STRATEGIC METALS LTD.  
 C/ O ARCHER, CATHRO & ASSOCIATES (1981)  
 LIMITED  
 1016- 510 W HASTINGS ST  
 VANCOUVER BC V6B 1L8

Page: 3 - A  
 Total # Pages: 3 (A - D)  
 Plus Appendix Pages  
 Finalized Date: 18- SEP- 2017  
 Account: MTT

Project: Ellias

**CERTIFICATE OF ANALYSIS WH17174139**

Sample Description	Method Analyte Units LOR	WEI- 21	ME- MS41	ME- MS41	ME- MS41	ME- MS41	ME- MS41	ME- MS41	ME- MS41	ME- MS41	ME- MS41	ME- MS41	ME- MS41	ME- MS41	ME- MS41	ME- MS41
		Recvd Wt. kg	Ag ppm	Al %	As ppm	Au ppm	B ppm	Ba ppm	Be ppm	Bi ppm	Ca %	Cd ppm	Ce ppm	Co ppm	Cr ppm	Cs ppm
		0.02	0.01	0.01	0.1	0.02	10	10	0.05	0.01	0.01	0.01	0.02	0.1	1	0.05
ZZ122909		0.17	0.22	2.67	10.3	<0.02	<10	190	0.97	0.14	0.37	0.11	19.00	17.3	68	2.22
ZZ122910		0.17	0.18	2.89	11.1	<0.02	<10	200	1.12	0.17	0.48	0.23	20.7	26.1	65	2.09
ZZ122911		0.27	0.18	2.88	8.4	<0.02	<10	210	1.07	0.14	0.31	0.09	17.90	21.2	73	2.46
ZZ122912		0.25	0.30	2.53	8.6	<0.02	<10	180	0.99	0.16	0.48	0.18	18.30	16.6	57	1.92
ZZ122913		0.40	0.25	2.94	79.8	0.03	<10	240	0.94	0.14	0.25	0.11	16.95	13.9	80	2.82
ZZ122914		0.40	0.16	2.72	6.5	<0.02	<10	200	0.74	0.12	0.27	0.12	15.75	13.3	72	2.21
ZZ122915		0.46	0.12	2.45	10.8	<0.02	<10	190	0.71	0.10	0.35	0.17	19.25	15.1	67	1.89
ZZ122916		0.19	0.12	1.92	6.7	<0.02	<10	140	0.56	0.14	0.28	0.11	15.95	14.6	55	1.73
ZZ122917		0.30	0.18	2.48	7.6	<0.02	<10	210	0.74	0.10	0.32	0.13	12.85	14.9	71	2.01
ZZ122918		0.33	0.12	2.37	6.9	<0.02	<10	190	0.78	0.10	0.26	0.18	18.00	15.1	63	2.03
ZZ122919		0.21	0.21	2.06	5.3	<0.02	<10	180	0.60	0.10	0.28	0.19	12.05	12.7	59	1.67
ZZ122920		0.26	0.14	2.60	6.9	<0.02	<10	200	0.93	0.14	0.31	0.17	19.10	19.0	64	2.03
ZZ122921		0.30	0.24	2.91	7.6	<0.02	<10	200	0.98	0.12	0.29	0.09	13.50	17.0	78	2.30
ZZ122922		0.19	0.11	2.68	7.9	<0.02	<10	220	0.97	0.14	0.31	0.18	15.65	19.3	70	2.31
ZZ122923		0.31	0.10	2.96	6.2	<0.02	<10	270	0.95	0.10	0.27	0.13	16.55	19.3	89	2.76
ZZ122924		0.23	0.11	2.76	6.2	<0.02	<10	240	0.99	0.11	0.29	0.13	16.90	19.4	78	2.38
ZZ122925		0.21	0.13	2.24	7.7	<0.02	<10	200	0.67	0.08	0.32	0.19	17.05	14.3	66	1.77
ZZ122926		0.18	0.08	2.78	12.4	<0.02	<10	270	0.98	0.14	0.37	0.23	19.70	16.4	67	2.06
ZZ122927		0.20	0.14	2.07	10.1	<0.02	<10	170	0.76	0.15	0.32	0.13	18.80	17.6	55	1.71
ZZ122928		0.21	0.07	1.23	11.4	<0.02	<10	80	0.33	0.19	0.20	0.49	15.05	9.1	38	1.27
ZZ122929		0.17	0.13	1.98	9.5	<0.02	<10	180	0.59	0.12	0.43	0.40	13.00	13.9	58	1.61
ZZ122930		0.20	0.28	2.27	5.0	<0.02	<10	220	0.73	0.09	0.51	0.20	20.6	16.0	56	1.47
ZZ122931		0.26	0.30	2.37	7.8	<0.02	<10	200	0.84	0.11	0.40	0.25	23.6	17.2	49	1.44
ZZ122932		0.17	0.17	2.47	12.9	<0.02	<10	220	0.82	0.11	0.31	0.24	17.80	15.1	61	1.82
ZZ122933		0.25	0.13	1.96	11.4	<0.02	<10	180	0.50	0.16	0.51	0.31	14.70	14.9	57	1.74
ZZ122934		0.21	0.15	2.78	20.2	<0.02	<10	260	0.94	0.15	0.37	0.24	17.80	20.5	70	2.17
ZZ122935		0.26	0.14	2.56	13.6	<0.02	<10	270	0.81	0.07	0.48	0.11	13.40	13.9	79	2.18
ZZ122936		0.26	0.09	2.78	7.5	<0.02	<10	270	0.84	0.09	0.25	0.09	11.65	15.4	90	2.64
ZZ122937		0.27	0.08	2.52	8.1	<0.02	<10	220	0.77	0.09	0.22	0.08	14.20	14.0	78	2.28
ZZ122938		0.32	0.13	2.68	8.5	<0.02	<10	240	0.61	0.11	0.22	0.07	11.00	13.2	98	3.46
ZZ122939		0.23	0.35	2.31	8.3	<0.02	<10	260	0.93	0.13	0.50	0.10	20.2	17.0	67	2.51
ZZ122940		0.36	0.13	2.04	10.4	<0.02	<10	180	0.63	0.09	0.28	0.20	14.70	11.8	58	1.79
ZZ122941		0.30	0.13	2.47	9.2	<0.02	<10	200	0.75	0.11	0.23	0.17	16.95	13.7	64	1.88
ZZ122942		0.35	0.24	2.69	18.2	<0.02	<10	240	1.00	0.13	0.32	0.17	15.50	17.4	76	2.52
ZZ122943		0.33	0.28	2.28	113.5	0.03	<10	180	0.78	0.12	0.43	0.32	13.85	14.2	63	1.93



ALS Canada Ltd.  
 2103 Dollarton Hwy  
 North Vancouver BC V7H 0A7  
 Phone: +1 (604) 984 0221 Fax: +1 (604) 984 0218  
 www.alsglobal.com/geochemistry

To: STRATEGIC METALS LTD.  
 C/ O ARCHER, CATHRO & ASSOCIATES (1981)  
 LIMITED  
 1016- 510 W HASTINGS ST  
 VANCOUVER BC V6B 1L8

Page: 3 - B  
 Total # Pages: 3 (A - D)  
 Plus Appendix Pages  
 Finalized Date: 18- SEP- 2017  
 Account: MTT

Project: Ellias

**CERTIFICATE OF ANALYSIS WH17174139**

Sample Description	Method Analyte Units LOR	ME- MS41	ME- MS41	ME- MS41	ME- MS41	ME- MS41	ME- MS41	ME- MS41	ME- MS41	ME- MS41	ME- MS41	ME- MS41	ME- MS41	ME- MS41	ME- MS41	ME- MS41
		Cu ppm	Fe %	Ga ppm	Ge ppm	Hf ppm	Hg ppm	In ppm	K %	La ppm	Li ppm	Mg %	Mn ppm	Mo ppm	Na %	Nb ppm
		0.2	0.01	0.05	0.05	0.02	0.01	0.005	0.01	0.2	0.1	0.01	5	0.05	0.01	0.05
ZZ122909		53.6	4.01	8.72	0.05	0.02	0.06	0.037	0.30	8.1	24.5	0.87	750	1.66	0.02	2.04
ZZ122910		58.4	4.23	8.90	0.05	0.02	0.05	0.035	0.23	8.4	25.6	0.90	1090	1.81	0.02	1.78
ZZ122911		45.3	4.23	9.27	0.06	0.02	0.03	0.039	0.39	7.8	27.3	0.91	744	1.41	0.02	2.63
ZZ122912		53.2	3.63	8.43	0.08	0.02	0.08	0.032	0.22	8.5	23.7	0.78	769	1.76	0.01	1.79
ZZ122913		52.0	4.07	9.50	0.10	<0.02	0.03	0.049	0.55	8.1	26.8	0.88	551	0.97	0.01	2.61
ZZ122914		41.1	3.48	8.87	0.10	0.02	0.03	0.046	0.41	7.2	26.3	0.89	405	0.74	0.01	2.46
ZZ122915		45.2	3.64	8.14	0.11	0.02	0.03	0.040	0.35	8.3	23.7	0.85	508	0.98	0.01	2.18
ZZ122916		39.1	3.56	7.77	0.08	<0.02	0.05	0.032	0.15	7.4	15.6	0.71	622	1.67	0.01	1.28
ZZ122917		41.7	3.67	8.24	0.10	<0.02	0.04	0.042	0.36	6.0	22.1	0.82	601	1.04	0.01	2.21
ZZ122918		44.5	3.56	8.05	0.09	0.02	0.02	0.031	0.36	7.6	25.6	0.77	537	1.11	0.01	2.36
ZZ122919		36.9	3.29	7.01	0.08	<0.02	0.07	0.032	0.27	5.7	16.6	0.69	616	1.08	0.01	1.53
ZZ122920		45.2	3.90	8.86	0.08	0.02	0.04	0.035	0.19	8.1	22.6	0.85	731	1.38	0.02	1.98
ZZ122921		52.6	4.39	10.15	0.09	<0.02	0.04	0.048	0.35	6.5	27.2	1.03	650	1.40	0.01	2.26
ZZ122922		46.1	3.91	9.13	0.08	0.02	0.03	0.040	0.24	6.7	26.4	0.91	591	1.53	0.01	2.19
ZZ122923		51.1	4.35	9.96	0.12	0.02	0.03	0.049	0.54	6.5	30.2	1.08	673	0.90	0.01	2.66
ZZ122924		47.4	4.03	9.33	0.09	0.02	0.03	0.041	0.41	7.2	27.2	0.95	667	1.02	0.02	2.50
ZZ122925		37.9	3.49	7.84	0.10	0.03	0.05	0.035	0.35	7.5	20.7	0.81	443	1.15	0.02	2.46
ZZ122926		43.3	4.27	9.39	0.08	0.02	0.04	0.043	0.22	8.5	25.0	0.81	773	1.60	0.01	1.95
ZZ122927		31.8	3.78	8.39	0.06	0.02	0.05	0.033	0.15	7.7	17.9	0.69	874	2.05	0.01	1.88
ZZ122928		30.9	3.59	8.94	0.07	0.03	0.03	0.022	0.10	7.0	10.0	0.42	330	3.20	0.01	2.06
ZZ122929		33.9	3.67	7.97	0.06	0.02	0.06	0.033	0.23	5.4	21.4	0.75	596	1.74	0.01	2.30
ZZ122930		37.5	3.10	7.05	0.08	<0.02	0.09	0.030	0.27	9.1	16.4	0.71	909	1.38	0.02	1.58
ZZ122931		48.4	3.33	7.18	0.07	0.02	0.07	0.030	0.19	9.9	16.1	0.62	695	1.35	0.02	1.43
ZZ122932		33.7	3.56	7.90	0.07	<0.02	0.05	0.037	0.18	8.1	19.2	0.72	923	1.36	0.01	1.35
ZZ122933		31.7	3.85	8.66	0.06	0.02	0.03	0.033	0.17	6.7	16.7	0.74	816	2.25	0.01	1.44
ZZ122934		42.1	4.18	9.34	0.07	<0.02	0.06	0.042	0.29	7.3	26.8	0.88	966	1.46	0.01	1.69
ZZ122935		36.7	3.84	8.41	0.09	<0.02	0.03	0.047	0.53	6.4	23.8	0.95	523	0.78	0.02	2.42
ZZ122936		40.0	3.98	9.30	0.12	0.02	0.02	0.044	0.66	5.6	29.3	1.07	540	0.68	0.01	2.86
ZZ122937		37.3	3.72	8.64	0.10	0.02	0.03	0.038	0.53	6.2	25.2	0.94	453	1.01	0.01	2.58
ZZ122938		35.9	3.61	9.00	0.10	<0.02	0.04	0.038	0.58	5.4	26.2	1.13	367	0.63	0.02	2.53
ZZ122939		51.0	3.51	7.42	0.11	<0.02	0.08	0.036	0.30	9.1	17.2	0.78	797	1.49	0.01	1.53
ZZ122940		33.9	3.16	7.39	0.09	0.02	0.04	0.030	0.32	6.1	23.5	0.69	385	0.96	0.01	2.30
ZZ122941		37.3	3.70	8.30	0.08	0.02	0.04	0.034	0.28	7.7	27.5	0.81	473	1.27	0.01	2.37
ZZ122942		50.3	4.23	9.17	0.07	<0.02	0.06	0.043	0.42	6.8	32.5	0.87	693	1.53	0.01	2.35
ZZ122943		46.7	3.63	7.98	0.07	0.02	0.06	0.038	0.26	6.7	24.6	0.80	571	1.30	0.01	1.78



ALS Canada Ltd.  
 2103 Dollarton Hwy  
 North Vancouver BC V7H 0A7  
 Phone: +1 (604) 984 0221 Fax: +1 (604) 984 0218  
 www.alsglobal.com/geochemistry

To: STRATEGIC METALS LTD.  
 C/ O ARCHER, CATHRO & ASSOCIATES (1981)  
 LIMITED  
 1016- 510 W HASTINGS ST  
 VANCOUVER BC V6B 1L8

Page: 3 - C  
 Total # Pages: 3 (A - D)  
 Plus Appendix Pages  
 Finalized Date: 18- SEP- 2017  
 Account: MTT

Project: Ellias

**CERTIFICATE OF ANALYSIS WH17174139**

Sample Description	Method Analyte Units LOR	ME- MS41	ME- MS41	ME- MS41	ME- MS41	ME- MS41	ME- MS41	ME- MS41	ME- MS41	ME- MS41	ME- MS41	ME- MS41	ME- MS41	ME- MS41	ME- MS41	
		Ni	P	Pb	Rb	Re	S	Sb	Sc	Se	Sn	Sr	Ta	Te	Th	Ti
		ppm	ppm	ppm	ppm	ppm	%	ppm	ppm	ppm	ppm	ppm	ppm	ppm	ppm	%
		0.2	10	0.2	0.1	0.001	0.01	0.05	0.1	0.2	0.2	0.2	0.01	0.01	0.2	0.005
ZZ122909		42.7	1090	7.4	29.4	<0.001	0.10	0.66	6.4	0.6	0.5	31.4	<0.01	0.06	0.5	0.170
ZZ122910		47.8	1270	8.0	25.3	<0.001	0.11	0.67	5.4	0.7	0.5	38.4	<0.01	0.06	0.4	0.155
ZZ122911		43.9	900	6.8	34.5	<0.001	0.07	0.59	8.5	0.5	0.6	27.4	<0.01	0.05	0.8	0.216
ZZ122912		42.9	1200	8.1	25.9	<0.001	0.12	0.78	4.9	0.8	0.5	41.3	<0.01	0.06	0.3	0.127
ZZ122913		45.3	990	7.7	38.3	<0.001	0.05	6.74	11.2	0.7	0.7	23.3	<0.01	0.04	0.8	0.198
ZZ122914		41.7	900	5.7	33.2	<0.001	0.03	1.19	9.1	0.9	0.6	18.2	<0.01	0.02	0.9	0.193
ZZ122915		42.7	1200	5.6	28.8	<0.001	0.03	0.63	8.6	1.0	0.5	22.0	<0.01	0.05	1.0	0.193
ZZ122916		33.8	1220	7.2	26.5	<0.001	0.10	0.61	3.9	0.8	0.5	26.4	<0.01	0.03	0.2	0.117
ZZ122917		38.9	1020	5.9	29.8	<0.001	0.08	0.73	7.6	0.6	0.5	25.2	<0.01	0.02	0.4	0.178
ZZ122918		42.9	650	5.4	33.3	<0.001	0.04	0.47	7.3	0.5	0.5	23.8	<0.01	0.06	0.8	0.199
ZZ122919		33.0	1230	5.6	27.6	<0.001	0.11	0.94	4.8	0.7	0.4	22.5	<0.01	0.04	0.2	0.125
ZZ122920		40.7	900	7.1	22.3	<0.001	0.08	0.59	6.6	0.8	0.5	31.0	<0.01	0.06	0.4	0.168
ZZ122921		47.5	950	8.0	34.9	<0.001	0.08	0.63	7.9	0.8	0.5	31.2	<0.01	0.04	0.4	0.180
ZZ122922		47.6	860	6.9	31.3	<0.001	0.08	0.53	6.5	0.7	0.5	29.7	<0.01	0.06	0.3	0.182
ZZ122923		53.7	750	6.1	43.5	<0.001	0.03	0.43	11.3	0.5	0.7	24.7	<0.01	0.07	0.8	0.266
ZZ122924		47.4	890	6.0	35.8	0.001	0.05	0.50	9.3	0.8	0.6	24.7	<0.01	0.04	0.6	0.223
ZZ122925		38.7	810	5.1	28.9	<0.001	0.02	0.54	7.9	0.5	0.4	26.2	<0.01	0.04	1.1	0.204
ZZ122926		43.5	880	8.5	26.9	<0.001	0.06	0.93	6.1	0.8	0.5	33.9	<0.01	0.06	0.4	0.154
ZZ122927		32.8	780	8.2	21.5	<0.001	0.04	0.76	6.0	0.7	0.5	32.0	<0.01	0.06	0.7	0.145
ZZ122928		26.7	460	9.3	15.3	<0.001	0.04	1.06	3.2	0.7	0.6	22.3	<0.01	0.07	0.6	0.161
ZZ122929		37.4	550	6.7	23.6	<0.001	0.05	0.66	5.4	0.3	0.4	32.2	<0.01	0.04	0.6	0.169
ZZ122930		32.0	1170	4.8	22.9	<0.001	0.13	0.46	4.6	0.5	0.4	45.0	<0.01	0.03	0.2	0.125
ZZ122931		33.6	1100	5.8	21.7	<0.001	0.11	0.64	4.4	0.7	0.4	35.7	<0.01	0.05	0.2	0.109
ZZ122932		31.8	1090	7.1	20.3	<0.001	0.10	1.02	4.7	0.5	0.4	29.7	<0.01	0.03	0.2	0.104
ZZ122933		33.6	670	9.5	24.2	<0.001	0.05	0.88	4.0	0.5	0.5	45.0	<0.01	0.04	0.3	0.130
ZZ122934		43.1	1150	8.9	32.7	<0.001	0.08	1.16	6.3	0.7	0.5	36.0	<0.01	0.05	0.3	0.136
ZZ122935		39.8	1080	5.7	34.1	<0.001	0.05	1.70	9.4	0.5	0.5	33.4	<0.01	0.03	0.6	0.191
ZZ122936		45.7	480	5.3	42.6	<0.001	0.02	0.63	10.6	0.4	0.6	22.7	<0.01	0.03	0.9	0.252
ZZ122937		42.0	640	5.4	37.6	<0.001	0.03	0.67	8.1	0.4	0.6	17.7	<0.01	0.05	0.7	0.223
ZZ122938		44.1	570	4.9	41.3	<0.001	0.04	0.53	8.7	0.5	0.7	20.5	<0.01	0.05	0.5	0.230
ZZ122939		37.7	1710	6.2	39.9	<0.001	0.15	1.03	4.4	1.0	0.5	42.7	<0.01	0.07	0.2	0.114
ZZ122940		35.7	640	4.9	27.9	<0.001	0.05	0.66	6.3	0.8	0.5	22.5	<0.01	0.04	0.5	0.169
ZZ122941		39.1	570	6.6	26.8	<0.001	0.04	0.55	6.7	0.6	0.5	21.2	<0.01	0.03	0.7	0.184
ZZ122942		45.8	850	7.3	35.9	<0.001	0.06	1.60	7.7	0.6	0.6	27.7	<0.01	0.07	0.5	0.182
ZZ122943		39.7	900	7.0	25.8	<0.001	0.08	2.37	5.8	0.6	0.5	39.7	<0.01	0.05	0.3	0.144





ALS Canada Ltd.  
 2103 Dollarton Hwy  
 North Vancouver BC V7H 0A7  
 Phone: +1 (604) 984 0221 Fax: +1 (604) 984 0218  
 www.alsglobal.com/geochemistry

To: STRATEGIC METALS LTD.  
 C/ O ARCHER, CATHRO & ASSOCIATES (1981)  
 LIMITED  
 1016- 510 W HASTINGS ST  
 VANCOUVER BC V6B 1L8

Page: 3 - D  
 Total # Pages: 3 (A - D)  
 Plus Appendix Pages  
 Finalized Date: 18- SEP- 2017  
 Account: MTT

Project: Ellias

**CERTIFICATE OF ANALYSIS WH17174139**

Sample Description	Method Analyte Units LOR	ME- MS41	ME- MS41	ME- MS41	ME- MS41	ME- MS41	ME- MS41	Au- ICP21	
		Tl ppm	U ppm	V ppm	W ppm	Y ppm	Zn ppm	Zr ppm	Au ppm
		0.02	0.05	1	0.05	0.05	2	0.5	0.001
ZZ122909		0.20	0.89	107	0.14	7.80	95	0.7	0.003
ZZ122910		0.22	0.91	104	0.14	7.64	98	0.7	0.005
ZZ122911		0.23	0.80	117	0.16	7.19	93	0.7	0.003
ZZ122912		0.22	0.88	91	0.14	7.82	82	0.7	0.002
ZZ122913		0.26	0.85	117	0.15	10.30	100	0.5	0.043
ZZ122914		0.22	0.75	101	0.15	7.28	89	0.7	0.002
ZZ122915		0.21	0.73	103	0.15	9.20	89	0.8	0.002
ZZ122916		0.19	0.68	94	0.12	4.96	73	0.5	0.002
ZZ122917		0.20	0.71	107	0.14	6.62	87	0.5	0.002
ZZ122918		0.23	0.65	101	0.14	5.88	82	0.8	0.003
ZZ122919		0.18	0.70	90	0.12	5.33	77	<0.5	<0.001
ZZ122920		0.21	0.64	108	0.16	7.37	92	0.7	<0.001
ZZ122921		0.21	0.66	120	0.15	5.14	102	0.6	<0.001
ZZ122922		0.23	0.61	108	0.14	5.36	96	0.8	0.001
ZZ122923		0.26	0.62	131	0.15	7.90	106	0.6	0.003
ZZ122924		0.23	0.64	121	0.14	7.17	99	0.6	<0.001
ZZ122925		0.21	0.56	100	0.14	6.58	80	1.0	<0.001
ZZ122926		0.19	0.70	109	0.15	8.04	106	0.6	0.003
ZZ122927		0.16	0.74	96	0.13	5.61	81	0.8	0.007
ZZ122928		0.12	0.57	107	0.15	3.16	81	1.2	0.005
ZZ122929		0.16	0.45	96	0.14	3.27	85	1.0	0.016
ZZ122930		0.18	0.78	85	0.11	9.67	76	0.5	<0.001
ZZ122931		0.17	0.83	85	0.11	9.64	78	0.7	0.001
ZZ122932		0.17	0.78	95	0.10	7.05	78	<0.5	0.009
ZZ122933		0.16	0.60	102	0.13	3.22	117	0.6	0.003
ZZ122934		0.18	0.76	107	0.15	6.59	112	0.5	0.005
ZZ122935		0.21	0.57	112	0.11	8.22	100	<0.5	0.004
ZZ122936		0.25	0.48	121	0.14	4.22	93	0.7	0.001
ZZ122937		0.24	0.59	112	0.18	5.25	82	0.7	0.011
ZZ122938		0.26	0.54	116	0.13	3.93	82	0.6	0.010
ZZ122939		0.24	0.99	97	0.11	13.10	71	<0.5	0.005
ZZ122940		0.20	0.52	91	0.16	5.21	74	0.7	0.007
ZZ122941		0.19	0.61	100	0.14	5.95	81	0.8	0.006
ZZ122942		0.24	0.77	114	0.13	5.96	97	0.6	0.007
ZZ122943		0.20	0.74	96	0.12	5.80	96	0.6	0.031



ALS Canada Ltd.  
2103 Dollarton Hwy  
North Vancouver BC V7H 0A7  
Phone: +1 (604) 984 0221 Fax: +1 (604) 984 0218  
www.alsglobal.com/geochemistry

To: STRATEGIC METALS LTD.  
C/ O ARCHER, CATHRO & ASSOCIATES (1981)  
LIMITED  
1016- 510 W HASTINGS ST  
VANCOUVER BC V6B 1L8

Page: Appendix 1  
Total # Appendix Pages: 1  
Finalized Date: 18- SEP- 2017  
Account: MTT

Project: Ellias

**CERTIFICATE OF ANALYSIS WH17174139**

**CERTIFICATE COMMENTS**

**ANALYTICAL COMMENTS**

Applies to Method: Gold determinations by this method are semi- quantitative due to the small sample weight used (0.5g).  
ME- MS41

**LABORATORY ADDRESSES**

Applies to Method: Processed at ALS Whitehorse located at 78 Mt. Sima Rd, Whitehorse, YT, Canada.  
LOG- 22 SCR- 41 WEI- 21

Applies to Method: Processed at ALS Vancouver located at 2103 Dollarton Hwy, North Vancouver, BC, Canada.  
Au- ICP21 ME- MS41