

ARCHER, CATHRO & ASSOCIATES (1981) LIMITED
1016 - 510 West Hastings Street
Vancouver, B.C. V6B1L8

Telephone: 604-688-2568

Fax: 604-688-2578

ASSESSMENT REPORT

describing

PROSPECTING AND SOIL GEOCHEMICAL SAMPLING

Field work performed on August 12, 2017

at the

NEWS PROPERTY

News 1-20 YF07861 – YF07880

NTS 105N04

Latitude 63°11'N; Longitude 133°55'W

located in the

Mayo Mining District
Yukon Territory

prepared by

Archer, Cathro & Associates (1981) Limited

for

STRATEGIC METALS LTD.

by

K. Willms, B.Sc.

February 2018

CONTENTS

INTRODUCTION	1
PROPERTY LOCATION, CLAIM DATA AND ACCESS	1
HISTORY AND PREVIOUS WORK	1
GEOMORPHOLOGY AND CLIMATE	2
REGIONAL GEOLOGY	3
PROPERTY GEOLOGY	4
MINERALIZATION	4
SOIL GEOCHEMISTRY	5
DISCUSSION AND CONCLUSIONS	5
REFERENCES	7

APPENDICES

I	STATEMENT OF QUALIFICATIONS
II	STATEMENT OF EXPENDITURES
III	ROCK SAMPLE DESCRIPTIONS
IV	CERTIFICATES OF ANALYSIS

FIGURES

<u>No.</u>	<u>Description</u>	<u>Follows Page</u>
1	Property Location	1
2	Claim Locations	1
3	Tectonic Setting	2
4	Regional Geology	2
5	Rock Sample Locations	4
6	Soil Sample Locations	4

TABLES

I	Lithological Units	2
---	--------------------	---

INTRODUCTION

The News property is located in central Yukon and covers strongly anomalous gold-in-silt samples collected during a historical reconnaissance silt sampling program. The property is situated alongside the Tombstone Gold Belt, a 550 km long belt that hosts significant gold occurrences across Yukon and Alaska, such as Goldstrike Resources Ltd.'s Plateau property located 18 km to the northeast. The property is wholly owned by Strategic Metals Ltd.

This report describes rock and soil geochemical sampling conducted on August 12, 2017 by Archer, Cathro & Associates (1981) Limited on behalf of Strategic Metals. The author did not supervise the program, but he did interpret all results from the work. The author's Statement of Qualifications is presented in Appendix I, while a Statement of Expenditures is located in Appendix II.

PROPERTY LOCATION, CLAIM DATA AND ACCESS

The News property consists of 20 contiguous mineral claims, which are located on NTS map sheet 105N/04 at latitude 63°11' north and longitude 133°55' west (Figure 1). The property covers an area of approximately 400 ha (4 km²). The claims are registered with the Mayo Mining Recorder in the name of Archer Cathro, which holds them in trust for Strategic Metals. Specifics concerning claim registration are tabulated below, while the locations of individual claims are shown on Figure 2.

<u>Claim Name</u>	<u>Grant Number</u>	<u>Expiry Date*</u>
News 1-20	YF07861-YF07880	March 21, 2022

* Expiry date includes 2017 work.

In 2017, access to and from the Lance property was provided by a Bell 206B helicopter operated by Fireweed Helicopters Ltd. of Whitehorse from a seasonal base at the Mayo airport. Personnel were mobilized from the nearby Lois claims, also wholly owned by Strategic Metals, which lie 40 km east-northeast of the property.

The News property lies within the traditional territories of the Na-cho Nyak Dun (NND) and Selkirk (SFN) First Nations. Both NND and SFN have settled land claim agreements with Canada and Yukon.

HISTORY AND PREVIOUS WORK

In 1990, the Geological Survey of Canada (GSC) conducted a reconnaissance stream sediment and water geochemical sampling program across NTS map sheet 105N. A total of 783 silt samples were collected, two of which are located on the News property. One silt sample returned a 99th percentile value for gold (480 ppb), the highest value recorded during the program (Friske et al., 1991).

STRATEGIC METALS LTD.

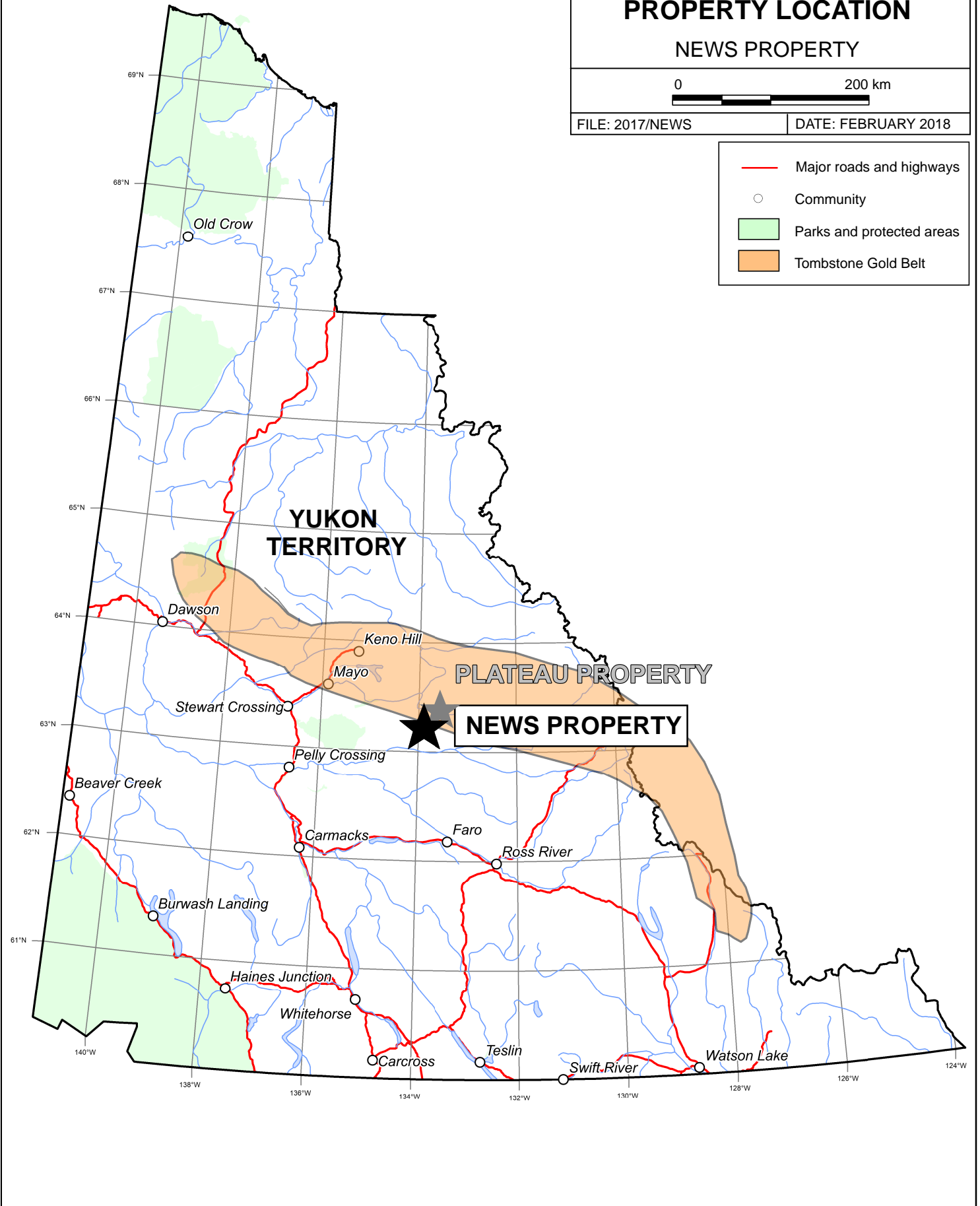
FIGURE 1
ARCHER, CATHRO & ASSOCIATES (1981) LIMITED
PROPERTY LOCATION
NEWS PROPERTY

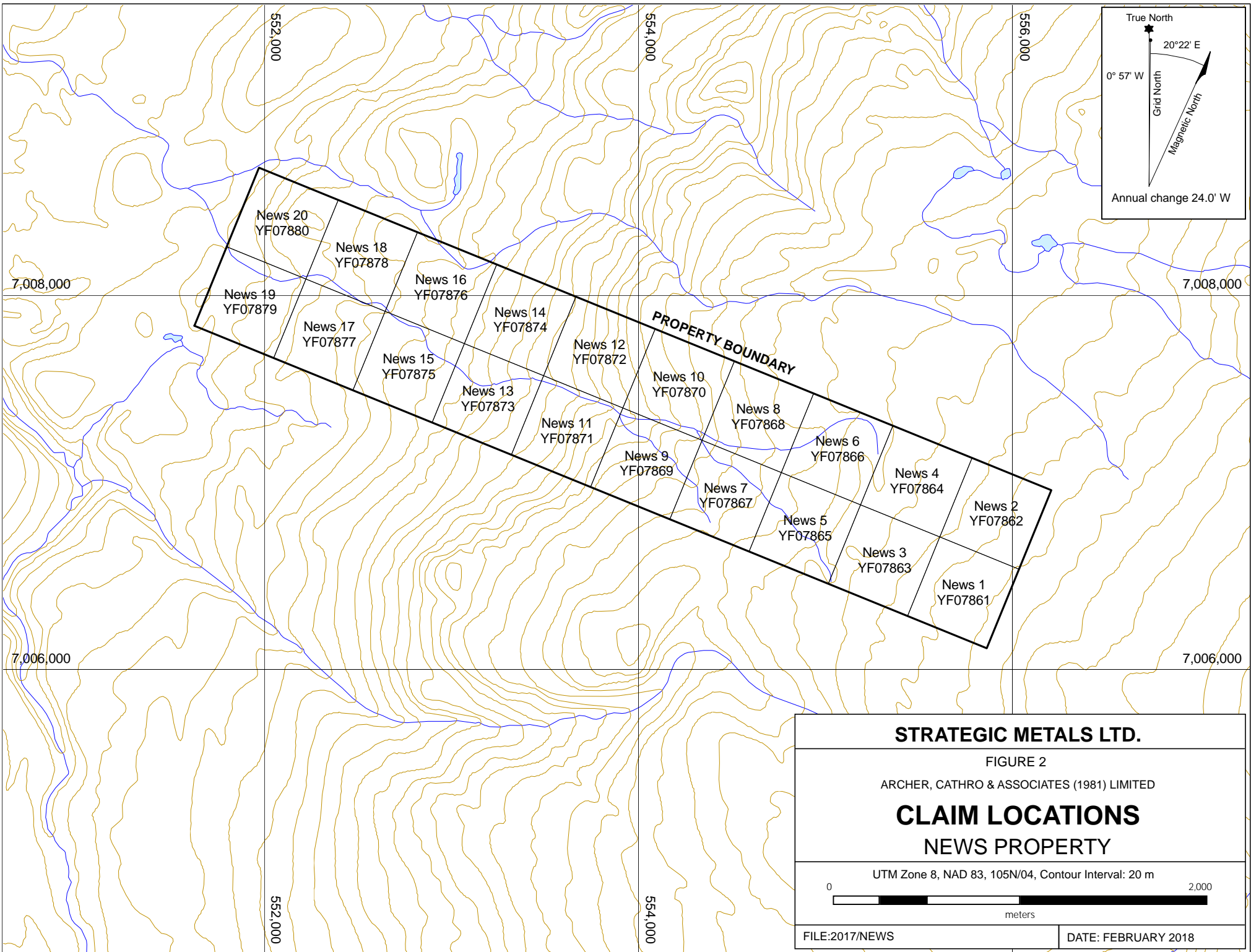


FILE: 2017/NEWS

DATE: FEBRUARY 2018

- Major roads and highways
- Community
- Parks and protected areas
- Tombstone Gold Belt



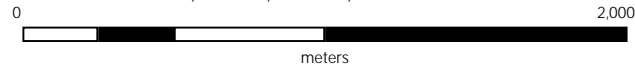


STRATEGIC METALS LTD.

FIGURE 2
ARCHER, CATHRO & ASSOCIATES (1981) LIMITED

**CLAIM LOCATIONS
NEWS PROPERTY**

UTM Zone 8, NAD 83, 105N/04, Contour Interval: 20 m



FILE:2017/NEWS

DATE: FEBRUARY 2018

In 1998, the GSC reanalysed the samples collected in 1990 to include bismuth and selenium. Samples from the News property returned up to 1 ppm selenium and 0.2 ppm bismuth (Friske et al., 1998).

In 2009, the GSC completed an additional reanalysis of the regional stream sediment and water samples collected in 1990 for 35 elements, but did not test for gold (Day et al., 2009). No significant results were returned.

In 2011, B2 Syndicate staked the Mac claims, which overlap with the current News property. The claims were immediately optioned to AccelRate Power Systems Inc., which was later renamed Goldstrike Resources Ltd. Later that year, Goldstrike Resources conducted a reconnaissance scale soil, rock and silt geochemical sampling program on the Mac claims. A total of 573 soil, 78 rock and five silt samples were collected for analysis (Sheldrake, 2012). Samples collected from the News property returned weak to background values. No further work was completed by Goldstrike Resources and in 2014, the Mac claims were allowed to lapse.

In 2017, Strategic Metals staked the current News property based on the unexplained strongly anomalous silt geochemistry.

GEOMORPHOLOGY AND CLIMATE

The News property is located less than 10 km northeast of Plateau Mountain in central Yukon. It is drained by an unnamed creek that feeds Moose Lake, located less than five kilometres to the west. The lake is a part of the Moose River drainage, a tributary of the larger Macmillan River that flows west before ultimately discharging into the Yukon River.

The property is characterized by a moderately steep north-facing hillside incised by a west-flowing creek. Elevations on the property range from approximately 800 to 1350 m above sea level. The entire property lies below treeline. Vegetation at higher elevations is made up of moss covered floors with thin stands of fir and spruce. Vegetation at lower elevations has been affected by a recent forest fire, leaving abundant deadfall and blow down amongst thick swaths of buckbrush and smaller deciduous trees. Outcrop comprises less than 1% of the property.

Most of central Yukon, including the News property was glaciated during the McConnell glaciation, the most recent Cordilleran glacial event which took place approximately 17,000 years ago. The area was also glaciated during the Reid and Gladstone glaciations, which occurred 120,000 and 60,000 years ago, respectively (YGS, 2017a). Glacial till and other features are present on the property; however, the thickness of the till is not known.

Climate in the News area is typical of northern continental regions with long, cold winters, truncated fall and spring seasons and short, mild summers. Although summers are relatively mild snowfall can occur in any month.

STRATEGIC METALS LTD.

FIGURE 3

ARCHER, CATHRO & ASSOCIATES (1981) LIMITED

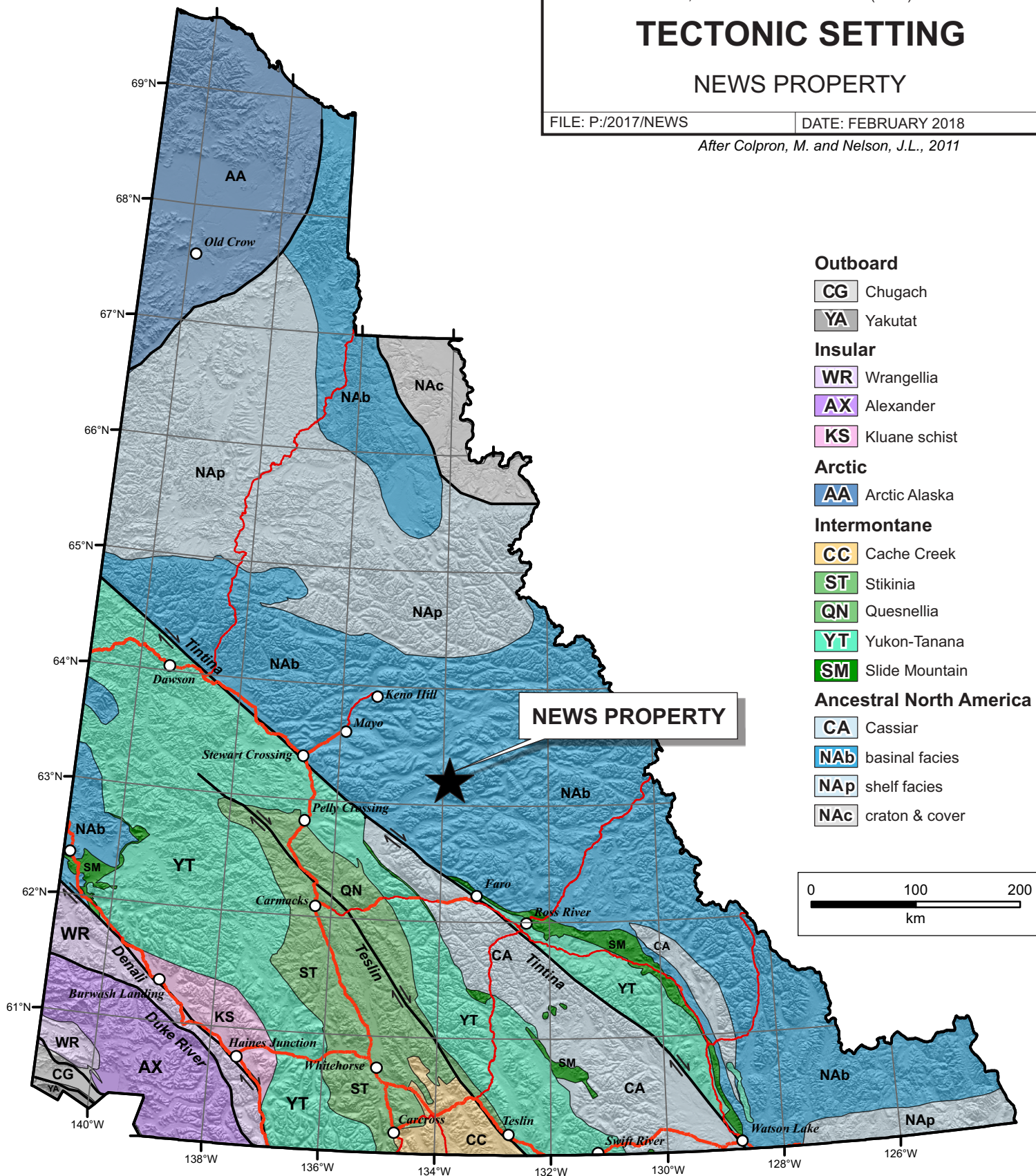
TECTONIC SETTING

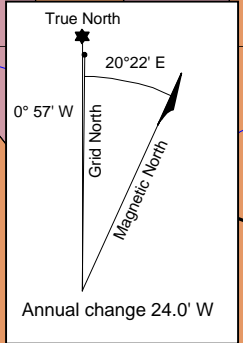
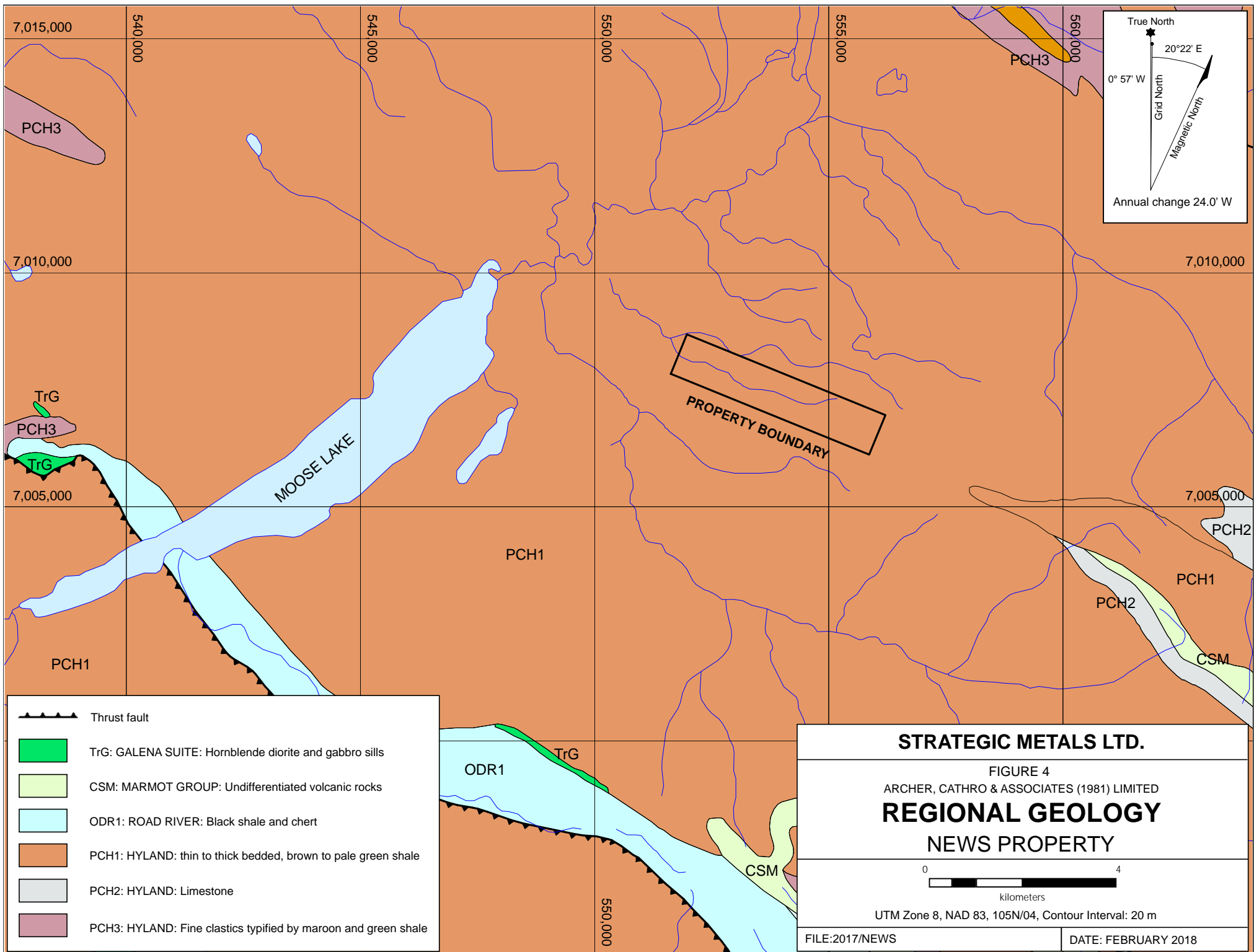
NEWS PROPERTY




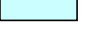



FILE: P:/2017/NEWS

DATE: FEBRUARY 2018

After Colpron, M. and Nelson, J.L., 2011






-  Thrust fault
-  TrG: GALENA SUITE: Hornblende diorite and gabbro sills
-  CSM: MARMOT GROUP: Undifferentiated volcanic rocks
-  ODR1: ROAD RIVER: Black shale and chert
-  PCH1: HYLAND: thin to thick bedded, brown to pale green shale
-  PCH2: HYLAND: Limestone
-  PCH3: HYLAND: Fine clastics typified by maroon and green shale

STRATEGIC METALS LTD.

FIGURE 4
 ARCHER, CATHRO & ASSOCIATES (1981) LIMITED
REGIONAL GEOLOGY
 NEWS PROPERTY

0  4
 kilometers

UTM Zone 8, NAD 83, 105N/04, Contour Interval: 20 m

FILE:2017/NEWS	DATE: FEBRUARY 2018
----------------	---------------------

REGIONAL GEOLOGY

In 1997, the GSC launched a mapping program of the Lansing map area (NTS map sheet 105N) which enhanced preliminary mapping previously done in the area (Roots, 1998). In 2003, the GSC published a compiled 1:250,000 scale bedrock geology map of the NTS map sheet 105N area (Roots, 2003). Gordey and Makepeace (2003) later completed a Yukon-wide geological compilation, which updated the lithological unit names in the Mayo district. Geological unit names were most recently updated in 2016 by the YGS and regional geological maps are updated as new information becomes available (YGS, 2017b).

The News property is located within the north-central part of Selwyn Basin (Figure 3), a predominantly off-shelf metasedimentary and metavolcanic sequence that accumulated along the North American continental margin during Neoproterozoic to Paleozoic time. The basin is bound to the northeast by the Mackenzie Platform, a carbonate platform that formed the near-shore facies of ancient North America (Abbott, 1986). Lithological units occurring near the News property are described in Table I, while the regional geology is shown on Figure 4.

Table I– Lithological Units (after YGS, 2017b)

Map Suite	Age	Map Unit	Description
Galena Suite	Triassic	TrG	(TrG) Massive, medium-grained hornblende diorite and gabbro sills; massive chloritic and locally serpentinized greenstone (diorite, gabbro and altered equivalents) sills; minor occurrences of possible Mid to Late Paleozoic age.
Road River Group	Ordovician to Silurian	ODR1	(ODR1) Black, gun-blue, or silvery white weathering black graptolitic shale and black chert; resistant grey weathering, thin to medium-bedded, light grey to black, greenish grey or turquoise chert; minor argillaceous limestone (Duo Lake Fm)
Marmot Group	Cambrian to Silurian	CSM (Undefined)	(CSM) Lower Paleozoic mostly mafic volcanic rocks, in locally thick accumulations of basalt, tuff, breccia and limestone, but also as undifferentiated thin scattered members within other units and as gabbro and pyroxenite dykes.
Hyland Group	Neoproterozoic	PCH1	(PCH1) Thin to thick-bedded, brown to pale green shale, fine to coarse-grained quartz-rich sandstone, grit and quartz pebble conglomerate; minor argillaceous limestone; phyllite, quartzofeldspathic and micaceous psammite, gritty psammite and minor marble. (Yusezyu Fm)

		PCH2	(PCH2) Grey weathering, dark grey to grey white, thin to thick-bedded, very fine crystalline limestone, locally sandy, local shale interbeds; calc-silicate and marble; may locally include carbonate members within (PCH1). (Algae Fm)
		PCH3	(PCH3) Distinctive, recessive, maroon weathering, interbedded maroon and apple-green slate; “Oldhamia” trace fossils; rare grey chert; locally basal member and interbeds of quartz siltstone, sandstone and quartz-pebble conglomerate.

The region is dominantly underlain by a basement sequence of Hyland Group (PCH1 to PCH3) metasedimentary rocks that are locally overlain by undifferentiated volcanoclastic rocks of the Marmot Group (CSM) and younger horizons of basal Road River Group (ODR1) metasediments. All of these units are intruded by diorite and gabbro sills of the Galena Suite (TrG).

These highly deformed sequences are displaced by two regional thrust faults, the Robert Service Thrust Fault (RSTF) and the Tombstone Thrust Fault (TTF), located 45 km to the northeast. The RSTF underwent at least 150 km of northerly displacement, thrusting Hyland Group rocks to their present level of exposure (Roots, 1997). Both faults were active from Jurassic to Cretaceous as part of a collision-related deformation regime related to large-scale plate convergence (Mair et al., 2006).

PROPERTY GEOLOGY

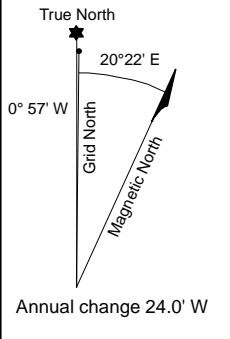
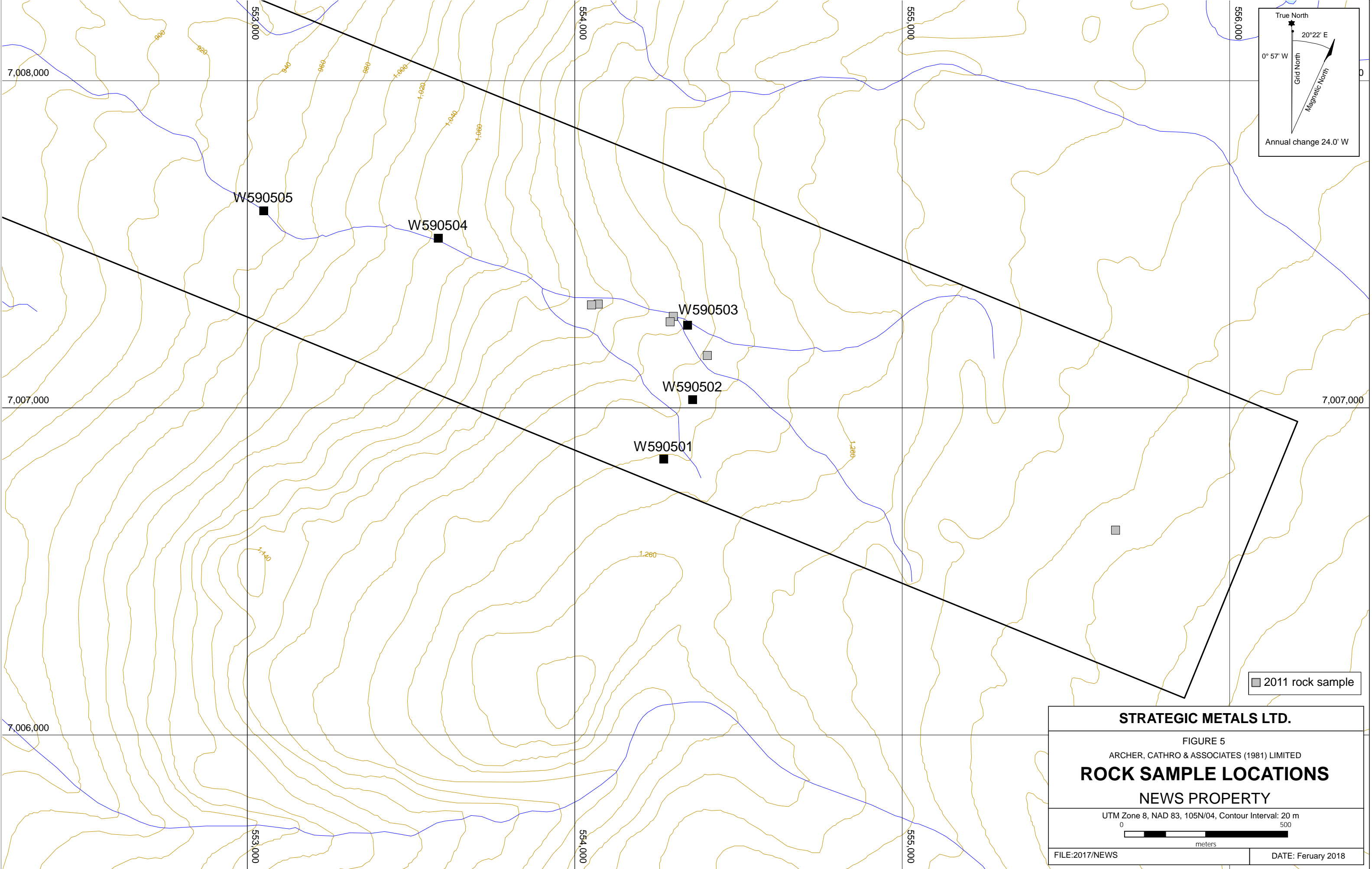
Due to the near absence of outcrop, no systematic mapping has been performed on the News property. The property geology described below is based on the regional mapping and observations made by Goldstrike Resources during their 2011 exploration program (Sheldrake, 2012).

The News property is underlain by fine to coarse grained silicified sandstone (PCH1) with lenses and pockets of silicified phyllite, limestone and shale noted throughout the sandstone unit. Calcite veining was commonly found in limestone units. No mineralization was observed in bedrock units on the current News property.


MINERALIZATION

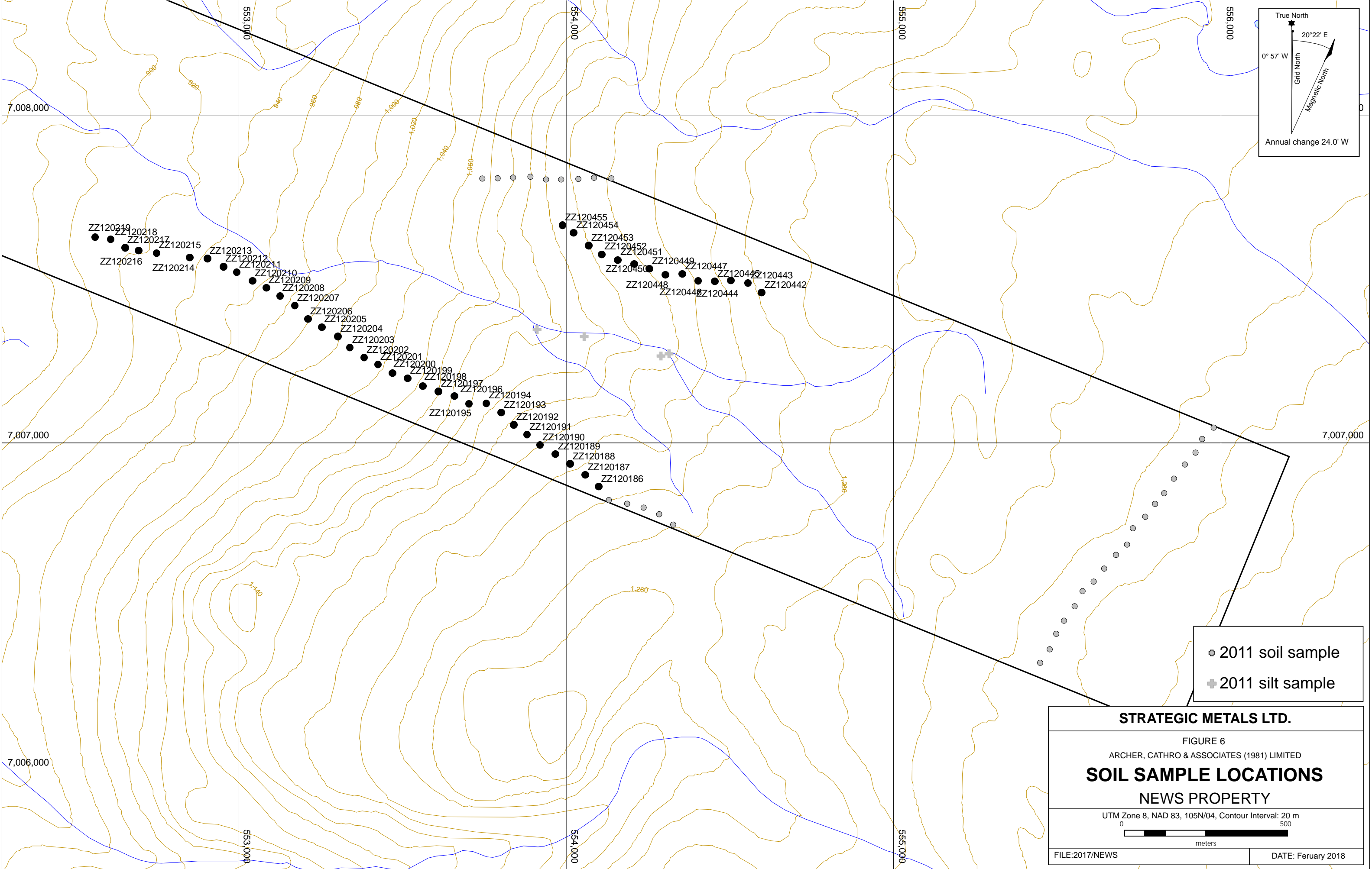
In 2011, Goldstrike Resources collected five rock samples from the main drainage on the News property. These rocks returned subdued results with a peak value of 54 ppm arsenic (Sheldrake, 2012).

In 2017, five more rock samples were collected in the main drainage on the property. All rock samples comprised quartz vein material with varying amounts of coarse pyrite. Results for all



■ 2011 rock sample

STRATEGIC METALS LTD.	
FIGURE 5	
ARCHER, CATHRO & ASSOCIATES (1981) LIMITED	
ROCK SAMPLE LOCATIONS	
NEWS PROPERTY	
UTM Zone 8, NAD 83, 105N/04, Contour Interval: 20 m	
 0 500 meters	
FILE:2017/NEWS	DATE: February 2018



STRATEGIC METALS LTD.

FIGURE 6
 ARCHER, CATHRO & ASSOCIATES (1981) LIMITED
SOIL SAMPLE LOCATIONS
 NEWS PROPERTY

UTM Zone 8, NAD 83, 105N/04, Contour Interval: 20 m

0 500
meters

FILE:2017/NEWS DATE: Feuary 2018

elements of interest were low. Rock sample locations are plotted on Figure 5, while Rock Sample Descriptions and Certificates of Analysis for the 2017 samples appear in Appendix III and Appendix IV, respectively.

All rock sample sites were marked with orange flagging tape labelled with the sample number and recorded using a handheld GPS unit. Rock samples were sent to ALS Minerals in Whitehorse where they were crushed to 70% passing 2 mm before a 250 g split was pulverized to 85% passing 70 microns. Rock sample pulps were then sent to ALS Minerals in North Vancouver where splits of the pulverized fractions were then dissolved in aqua regia and analyzed for 52 elements using inductively coupled plasma combined with mass spectroscopy and atomic emission spectroscopy (ME-MS41). An additional 30 g charge was further analyzed for gold by fire assay followed by inductively coupled plasma-atomic emissions spectroscopy (Au-ICP21).

SOIL GEOCHEMISTRY

In 2011, Goldstrike Resources collected 33 soil and five silt samples from the News property. Peak results from this sampling included 18.5 ppb gold, 15 ppm arsenic and 31.2 ppm copper.

In 2017, Strategic Metals collected 48 samples from the property. Soil sample locations are shown on Figure 6, while Certificates of Analysis for the 2017 samples are provided in Appendix IV.

The 2017 soil sample locations were recorded using hand-held GPS units. Sample sites are marked by aluminum tags inscribed with the sample numbers and affixed to 0.5 m wooden lath that were driven into the ground. Soil samples were collected from holes dug by hand-held auger. They were placed into individually pre-numbered Kraft paper bags. The soil samples were sent to ALS Minerals in Whitehorse, where they were dried and screened to -180 microns. The fine fractions were then shipped to ALS Minerals in North Vancouver where they were analysed for 52 elements using an aqua regia digestion followed by inductively coupled plasma combined with mass spectroscopy and atomic emission spectroscopy (ME-MS41). An additional 30 g charge was further analysed for gold by fire assay with inductively coupled plasma-atomic emissions spectroscopy finish (Au-ICP21).

Results from the 2017 program were subdued with peak values of 8 ppb gold-in-soil, 10.7 ppm arsenic-in-soil and 26.8 ppm copper-in-soil. The subdued soil geochemical response on the property is likely due to thick organic cover and the presence of quaternary glacial sediments, both of which mask the underlying soil geochemical signature.

DISCUSSION AND CONCLUSIONS

The News property is situated alongside the Tombstone Gold Belt, which contains a number of significant gold occurrences, including Goldstrike Resources Ltd.'s Plateau property located 18 km to the northeast.

The News property remains an interesting exploration target because cursory soil and rock sampling during the 2017 exploration program was not able to identify a source for the 480 ppb gold-in-silt value.

Future work on the News property is warranted, and should include: 1) surficial geology and/or geomorphological studies to try and determine the effect glaciation has had on the underlying geology and soil development; 2) additional deep auger or power auger soil sampling to test deeper in the soil profile; and 3) gold panning or silt sampling of the main drainage to test for the presence of coarse or glacially transported gold, which may be the cause of the anomalous gold-in-silt value.

Respectfully submitted,

ARCHER, CATHRO & ASSOCIATES (1981) LIMITED



K. Willms, B.Sc.

REFERENCES

- Abbott, J.G., Gordey, S.P. and Tempelman-Kluit, D.J.
 1986 Setting of STrataform, Sediment-hosted Lead-zinc Deposits in Yukon and Northeast British Columbia; In Mineral Deposits of Northern Cordillera, J.A. Morin (ed.), Canadian Institute of Mining and Metallurgy, Special Volume 37, p. 1-18.
- Colpron, M. and Newson, J. L.
 2011 A digital atlas of terranes for the Northern Cordillera; Yukon Geological Survey and BC Geology Survey, BCGS GeoFile 2011-11
http://www.geology.gov.yk.ca/pdf/CanCord_terranes_2011.pdf
- Day, S.J.A., McCurdy, M.W., Friske, P.W., McNeil, R.J., Hornbrook, E.H., Lynch, J.J, Gross, H., Galletta, A.C., Durham, C.C.
 1991 Regional Stream Sediment and Water Data, Lansing Range Area, East Central Yukon (NTS 105N). Geological Survey of Canada, Open File 6272.
- Friske, P.W., Hornbrook, E.H., Lynch, J., McCurdy, M, Gross, H., Galletta, A.C., Durham, C.C.
 1991 National Geochemical Reconnaissance Stream Sediment and Water Data, East Central Yukon (NTS 105N). Geological Survey of Canada, Open File 2363.
- Friske, P.W., Day, S.J.A, McCurdy, M.W., Durham, C.C.
 1998 Regional Stream Sediment and Water Data, Central Yukon (NTS 105M and 105N). Geological Survey of Canada, Open File 3685.
- Gordey, S.P. and Makepeace, A.J. (compilers)
 2003 Yukon digital geology, version 2.0, Geological Survey of Canada, Open File 1749 and Yukon Geological Survey, Open File 2003-9 (D).
- Mair, J.L., Hart, C., and Stephens, J.R.
 2006 Deformation History of the Northwestern Selwyn Basin, Yukon, Canada: Implications for Orogeny Evolution and Mid-Cretaceous Magmatism; Geological Society of America Bulletin, Marh/April 2006, V. 118, p. 289-303.
- Roots, C.F.
 1998 Progress Report on Bedrock Geology of Lansing Map Area, Central Yukon Territory; in Current Research 1998-A; Geological Survey of Canada, p. 19-28.
 2003 Bedrock geology of the Lansing Range map area (NTS 105N), central Yukon. Yukon Geological Survey, Geoscience Map 2003-1.
- Sheldrake, R.F.
 2012 Assessment Report, Rock and Soil Geochemical Surveys for Goldstrike Resources Ltd. Data Collection by Druid Exploration Inc. Report # 096227.

Yukon Geological Survey

2017a Quaternary Glaciation Map

<http://www.geology.gov.yk.ca/quaternary.html>, accessed February, 2018.

2017b Yukon Digital Bedrock Geology.

http://www.geology.gov.yu.ca/update_yukon_bedrock_geology_map.html,
accessed: January, 2018.

APPENDIX I
STATEMENT OF QUALIFICATIONS

STATEMENT OF QUALIFICATIONS

I, Kelson Willms, geologist, with business addresses in Vancouver, British Columbia and Whitehorse, Yukon Territory and residential address in Vancouver, British Columbia, do hereby certify that:

1. I graduated from the University of British Columbia in 2017 with a B.Sc in Earth and Environmental Sciences.
2. From 2015 to present, I have been actively engaged in mineral exploration in the Yukon Territory and British Columbia.
3. I have not personally participated in the fieldwork reported herein, but have interpreted all data resulting from this work.



K. Willms, B.Sc.

APPENDIX II

STATEMENT OF EXPENDITURES

Statement of Expenditures
News 1-20 Mineral Claims
February 5, 2018

Labour

D. Eaton geologist 2 hours April to December at \$120/hr	\$ 252.00
J. Morton geologist 2 hours April to December at \$96/hr	201.60
K. Willms geologist 28 hours April to December at \$62/hr	1,822.80
C. Ackerson field assistant 8 hours April to December at \$55/hr	462.00
J. Kitchen field assistant 8 hours April to December at \$55/hr	462.00
Q. Willms field assistant 8 hours April to December at \$51/hr	428.40
J. Itkin office 1.50 hours April to December at \$96/hr	151.20
J. Mariacher office 4 hours April to December at \$90/hr	378.00
L. Corbett expedite 1 hours April to December at \$81/hr	85.05
L. Smith office and expedite 2 hours April to December at \$81/hr	170.10
V. Cournoyer-Derome expedite 2 hours April to December at \$51/hr	107.10
S. Newman office 6.5 hours April to December at \$68/hr	<u>464.10</u>
	4,984.35

Expenses including management

Field room and board 3 mandays at \$195/manday	661.05
Fireweed Helicopters 1.23 hours Bell 206 at \$1,200/hr plus fuel	1,856.66
ALS Chemex	<u>1,612.57</u>
	4,130.28

Total \$9,114.63

APPENDIX III
ROCK SAMPLE DESCRIPTIONS

Rock Sample Descriptions

Property: News

Sample Number: W590501 UTM: 554272 mE Nad83, Zone 8

Elevation: 1214 m UTM: 7006843 mN

Comments: Weathered grey, grey/blue medium to coarse grained quartz rich conglomerate or silica rich volcanoclastic rock with moderate amounts of fine grained pyrite and small weathered blobs filled with limonite.

Sample Number: W590502 UTM: 554360 mE Nad83, Zone 8

Elevation: 1197 m UTM: 7007025 mN

Comments: Milky white quartz vein with abundant limonite staining. Hosted in dark grey phyllite. Sampled from Angular boulder in creek.

Sample Number: W590503 UTM: 554345 mE Nad83, Zone 8

Elevation: 1172 m UTM: 7007252 mN

Comments: Angular boulder in creek. Milky white massive to vuggy quartz boulder with limonite (?) stained vugs.

Sample Number: W590504 UTM: 553583 mE Nad83, Zone 8

Elevation: 1039 m UTM: 7007518 mN

Comments: Boulder in creek. Orange weathered, white/grey massive quartz with moderate amounts of very coarse pyrite.

Sample Number: W590505 UTM: 553050 mE Nad83, Zone 8

Elevation: 945 m UTM: 7007602 mN

Comments: Boulder in creek. Red/orange weathered grey/white silica rich rock with abundant quartz veinettes. Quartz breccia?

APPENDIX IV
CERTIFICATES OF ANALYSIS



ALS Canada Ltd.
 2103 Dollarton Hwy
 North Vancouver BC V7H 0A7
 Phone: +1 (604) 984 0221 Fax: +1 (604) 984 0218
 www.alsglobal.com/geochemistry

To: **STRATEGIC METALS LTD.**
C/ O ARCHER, CATHRO & ASSOCIATES (1981)
LIMITED
1016- 510 W HASTINGS ST
VANCOUVER BC V6B 1L8

Page: 1
Total # Pages: 3 (A - D)
Plus Appendix Pages
Finalized Date: 17- SEP- 2017
Account: MTT

CERTIFICATE WH17178177

Project: News

This report is for 48 Soil samples submitted to our lab in Whitehorse, YT, Canada on 23- AUG- 2017.

The following have access to data associated with this certificate:

ANDREW CARNE	JOAN MARIACHER	JACK MORTON
--------------	----------------	-------------

SAMPLE PREPARATION	
ALS CODE	DESCRIPTION
WEI- 21	Received Sample Weight
LOG- 22	Sample login - Rcd w/o BarCode
SCR- 41	Screen to - 180um and save both

ANALYTICAL PROCEDURES		
ALS CODE	DESCRIPTION	INSTRUMENT
Au- ICP21	Au 30g FA ICP- AES Finish	ICP- AES
ME- MS41	Ultra Trace Aqua Regia ICP- MS	

To: **STRATEGIC METALS LTD.**
ATTN: JOAN MARIACHER
C/ O ARCHER, CATHRO & ASSOCIATES (1981) LIMITED
1016- 510 W HASTINGS ST
VANCOUVER BC V6B 1L8

This is the Final Report and supersedes any preliminary report with this certificate number. Results apply to samples as submitted. All pages of this report have been checked and approved for release.

***** See Appendix Page for comments regarding this certificate *****

Signature: 
 Colin Ramshaw, Vancouver Laboratory Manager



ALS Canada Ltd.
 2103 Dollarton Hwy
 North Vancouver BC V7H 0A7
 Phone: +1 (604) 984 0221 Fax: +1 (604) 984 0218
 www.alsglobal.com/geochemistry

To: STRATEGIC METALS LTD.
 C/ O ARCHER, CATHRO & ASSOCIATES (1981)
 LIMITED
 1016- 510 W HASTINGS ST
 VANCOUVER BC V6B 1L8

Page: 2 - A
 Total # Pages: 3 (A - D)
 Plus Appendix Pages
 Finalized Date: 17- SEP- 2017
 Account: MTT

Project: News

CERTIFICATE OF ANALYSIS WH17178177

Sample Description	Method	WEI- 21	ME- MS41	ME- MS41	ME- MS41	ME- MS41	ME- MS41	ME- MS41	ME- MS41	ME- MS41	ME- MS41	ME- MS41	ME- MS41	ME- MS41	ME- MS41	ME- MS41
	Analyte	Recvd Wt.	Ag	Al	As	Au	B	Ba	Be	Bi	Ca	Cd	Ce	Co	Cr	Cs
Units		kg	ppm	%	ppm	ppm	ppm	ppm	ppm	ppm	%	ppm	ppm	ppm	ppm	ppm
LOR																
		0.02	0.01	0.01	0.1	0.02	10	10	0.05	0.01	0.01	0.01	0.02	0.1	1	0.05
ZZ120186		0.37	0.08	1.18	9.2	<0.02	<10	100	0.34	0.22	0.09	0.09	27.4	6.3	18	0.96
ZZ120187		0.42	0.15	0.89	6.7	<0.02	<10	230	0.44	0.15	0.19	0.15	18.80	8.3	15	0.72
ZZ120188		0.42	0.03	0.80	6.5	<0.02	<10	80	0.20	0.15	0.15	0.13	22.2	7.5	20	0.74
ZZ120189		0.37	0.11	1.10	8.2	<0.02	<10	210	0.39	0.19	0.50	0.13	21.8	7.4	25	0.74
ZZ120190		0.49	0.11	1.29	10.0	<0.02	<10	210	0.54	0.24	0.36	0.19	28.1	9.3	29	0.86
ZZ120191		0.38	0.11	1.18	7.7	<0.02	<10	250	0.44	0.23	0.45	0.30	25.7	10.8	27	0.81
ZZ120192		0.35	0.09	1.11	10.7	<0.02	<10	230	0.45	0.21	0.41	0.10	25.0	10.6	26	0.77
ZZ120193		0.40	0.06	0.89	6.7	<0.02	<10	120	0.30	0.15	0.20	0.10	23.3	8.6	20	0.64
ZZ120194		0.41	0.08	0.98	8.9	<0.02	<10	120	0.35	0.20	0.31	0.10	26.8	9.7	23	1.22
ZZ120195		0.62	0.11	0.82	9.4	<0.02	<10	90	0.41	0.28	0.25	0.07	23.9	10.4	15	1.62
ZZ120196		0.45	0.10	1.05	8.9	<0.02	<10	150	0.45	0.25	0.23	0.13	24.5	11.0	22	1.47
ZZ120197		0.50	0.15	1.08	7.0	<0.02	<10	170	0.47	0.23	0.30	0.16	26.9	13.3	26	0.90
ZZ120198		0.49	0.10	1.15	8.9	<0.02	<10	180	0.46	0.23	0.29	0.14	28.2	13.7	29	0.82
ZZ120199		0.60	0.11	1.13	7.0	<0.02	<10	200	0.45	0.22	0.22	0.12	29.3	13.4	29	0.87
ZZ120200		0.47	0.09	0.97	8.1	<0.02	<10	160	0.33	0.22	0.28	0.15	27.0	18.8	23	0.87
ZZ120201		0.40	0.10	0.92	6.5	<0.02	<10	170	0.32	0.19	0.40	0.19	23.9	7.9	24	0.73
ZZ120202		0.38	0.12	0.99	6.4	<0.02	<10	190	0.35	0.20	0.55	0.24	21.1	8.6	24	0.84
ZZ120203		0.34	0.12	1.09	4.7	<0.02	<10	230	0.42	0.22	0.52	0.25	23.4	7.5	26	0.85
ZZ120204		0.37	0.16	1.08	8.2	<0.02	<10	230	0.28	0.25	0.48	0.23	23.4	7.8	27	0.99
ZZ120205		0.37	0.12	1.03	5.6	<0.02	<10	230	0.32	0.20	0.64	<0.22	23.3	7.7	23	0.84
ZZ120206		0.38	0.13	1.00	6.1	<0.02	<10	210	0.32	0.19	0.80	0.26	20.7	6.7	23	0.74
ZZ120207		0.33	0.13	0.93	4.3	<0.02	<10	240	0.30	0.16	0.73	0.31	22.8	6.5	20	0.72
ZZ120208		0.39	0.11	0.96	4.7	<0.02	<10	210	0.28	0.18	0.71	0.19	22.9	4.6	22	0.72
ZZ120209		0.49	0.12	0.96	5.2	<0.02	<10	230	0.32	0.19	0.81	0.22	21.3	6.7	21	0.77
ZZ120210		0.41	0.14	0.95	7.7	<0.02	<10	230	0.33	0.19	0.54	0.14	22.4	7.2	21	0.69
ZZ120211		0.45	0.12	0.95	6.6	<0.02	<10	200	0.31	0.17	0.49	0.30	23.5	7.5	21	0.73
ZZ120212		0.47	0.08	0.84	4.0	<0.02	<10	170	0.28	0.13	0.47	0.11	24.5	9.1	20	0.60
ZZ120213		0.37	0.09	0.92	5.6	<0.02	<10	210	0.26	0.17	0.61	0.12	23.8	6.5	19	0.69
ZZ120214		0.40	0.12	0.91	5.7	<0.02	<10	200	0.27	0.16	0.79	0.17	20.7	6.9	20	0.64
ZZ120215		0.43	0.11	0.91	5.3	<0.02	<10	210	0.27	0.17	0.84	0.28	22.0	6.9	19	0.67
ZZ120216		0.34	0.11	0.95	6.7	<0.02	<10	230	0.34	0.17	0.73	0.27	23.5	7.3	20	0.68
ZZ120217		0.32	0.10	0.99	5.6	<0.02	<10	230	0.30	0.17	0.66	0.17	25.4	7.6	20	0.78
ZZ120218		0.30	0.12	1.00	6.0	<0.02	<10	220	0.30	0.17	0.65	0.17	24.4	5.9	20	0.75
ZZ120219		0.40	0.08	0.86	10.4	<0.02	<10	150	0.33	0.20	0.34	0.13	36.5	7.6	18	0.70
ZZ120442		0.31	0.17	1.23	9.5	<0.02	<10	130	0.34	0.19	0.10	0.12	27.4	5.1	21	0.92
ZZ120443		0.46	0.06	1.21	8.6	<0.02	<10	110	0.30	0.18	0.06	0.06	32.7	6.8	25	0.88
ZZ120444		0.43	0.06	1.26	9.2	<0.02	<10	110	0.41	0.18	0.06	0.07	35.0	7.4	26	0.93
ZZ120445		0.47	0.05	1.17	8.2	<0.02	<10	110	0.30	0.17	0.07	0.07	33.5	7.1	24	0.84
ZZ120446		0.37	0.25	1.02	6.9	<0.02	<10	140	0.30	0.17	0.09	0.14	26.7	5.9	22	0.81
ZZ120447		0.40	0.12	0.84	7.7	<0.02	<10	130	0.22	0.16	0.17	0.16	30.0	7.1	16	0.59



ALS Canada Ltd.
 2103 Dollarton Hwy
 North Vancouver BC V7H 0A7
 Phone: +1 (604) 984 0221 Fax: +1 (604) 984 0218
 www.alsglobal.com/geochemistry

To: STRATEGIC METALS LTD.
 C/ O ARCHER, CATHRO & ASSOCIATES (1981)
 LIMITED
 1016- 510 W HASTINGS ST
 VANCOUVER BC V6B 1L8

Page: 2 - B
 Total # Pages: 3 (A - D)
 Plus Appendix Pages
 Finalized Date: 17- SEP- 2017
 Account: MTT

Project: News

CERTIFICATE OF ANALYSIS WH17178177

Sample Description	Method Analyte Units LOR	ME- MS41	ME- MS41	ME- MS41	ME- MS41	ME- MS41	ME- MS41	ME- MS41	ME- MS41	ME- MS41	ME- MS41	ME- MS41	ME- MS41	ME- MS41	ME- MS41	
		Cu ppm	Fe %	Ga ppm	Ge ppm	Hf ppm	Hg ppm	In ppm	K %	La ppm	Li ppm	Mg %	Mn ppm	Mo ppm	Na %	Nb ppm
		0.2	0.01	0.05	0.05	0.02	0.01	0.005	0.01	0.2	0.1	0.01	5	0.05	0.01	0.05
ZZ120186		14.8	2.42	4.60	0.05	<0.02	0.02	0.019	0.03	13.9	16.9	0.22	194	0.91	<0.01	0.94
ZZ120187		15.5	2.11	2.82	<0.05	<0.02	0.03	0.016	0.02	9.1	13.3	0.20	516	0.74	<0.01	0.35
ZZ120188		11.5	2.09	2.91	<0.05	0.02	0.01	0.014	0.03	10.7	18.4	0.30	315	0.60	<0.01	0.56
ZZ120189		18.0	2.33	3.28	<0.05	0.04	0.05	0.018	0.04	10.7	27.6	0.39	114	0.59	<0.01	0.48
ZZ120190		22.6	3.04	4.08	0.06	0.04	0.05	0.021	0.04	14.1	26.6	0.39	257	0.85	<0.01	0.56
ZZ120191		22.4	2.57	3.72	0.06	0.03	0.05	0.021	0.05	12.6	23.0	0.38	1180	0.76	<0.01	0.48
ZZ120192		23.4	2.77	3.36	<0.05	0.03	0.07	0.021	0.04	11.8	20.4	0.34	373	0.71	<0.01	0.51
ZZ120193		14.6	2.12	2.96	<0.05	<0.02	0.03	0.015	0.04	11.0	16.9	0.29	454	0.66	<0.01	0.44
ZZ120194		20.3	2.67	3.10	0.05	0.02	0.03	0.017	0.06	13.4	21.4	0.35	310	0.68	<0.01	0.44
ZZ120195		26.8	2.66	2.89	<0.05	<0.02	0.03	0.015	0.06	11.4	24.5	0.27	270	0.53	<0.01	0.28
ZZ120196		24.4	2.72	3.22	<0.05	0.03	0.04	0.019	0.06	12.0	22.8	0.33	682	0.65	<0.01	0.43
ZZ120197		22.7	2.70	3.21	0.05	0.05	0.07	0.020	0.04	13.5	23.3	0.35	949	0.57	<0.01	0.54
ZZ120198		22.0	2.93	3.51	0.05	0.05	0.05	0.021	0.04	14.0	25.9	0.40	738	0.63	<0.01	0.56
ZZ120199		20.5	2.96	3.46	0.05	0.04	0.04	0.020	0.04	14.2	26.1	0.38	1220	0.61	<0.01	0.51
ZZ120200		17.3	2.70	3.19	0.05	0.04	0.05	0.017	0.04	13.0	23.1	0.35	2010	0.68	<0.01	0.49
ZZ120201		15.4	2.08	2.98	<0.05	0.04	0.06	0.016	0.04	11.4	17.5	0.34	447	0.57	<0.01	0.58
ZZ120202		16.6	2.18	3.15	<0.05	0.03	0.05	0.017	0.05	10.2	18.7	0.33	630	0.63	<0.01	0.52
ZZ120203		21.8	1.61	3.41	<0.05	0.04	0.07	0.018	0.05	11.4	19.7	0.33	302	0.42	<0.01	0.55
ZZ120204		14.9	2.22	3.50	<0.05	0.03	0.10	0.021	0.06	12.1	19.5	0.35	554	0.76	<0.01	0.71
ZZ120205		13.5	1.97	3.16	<0.05	0.03	0.06	0.019	0.05	11.9	18.2	0.32	508	0.44	<0.01	0.67
ZZ120206		14.8	1.90	3.01	<0.05	0.04	0.06	0.016	0.05	10.9	17.9	0.34	485	0.54	<0.01	0.64
ZZ120207		15.2	1.61	2.82	<0.05	0.02	0.06	0.016	0.05	11.5	15.7	0.32	464	0.32	<0.01	0.64
ZZ120208		15.3	1.62	3.04	<0.05	0.02	0.06	0.016	0.05	12.0	15.8	0.32	186	0.43	<0.01	0.67
ZZ120209		15.0	1.70	3.04	<0.05	0.03	0.06	0.017	0.05	11.0	15.9	0.33	560	0.75	<0.01	0.65
ZZ120210		15.4	2.06	3.02	<0.05	0.03	0.07	0.018	0.05	11.6	14.9	0.30	660	0.71	<0.01	0.64
ZZ120211		17.7	2.13	2.92	<0.05	0.02	0.06	0.017	0.04	11.8	17.1	0.30	457	0.59	<0.01	0.60
ZZ120212		12.2	1.67	2.65	<0.05	0.02	0.05	0.014	0.04	12.4	16.7	0.29	668	0.41	<0.01	0.52
ZZ120213		11.4	1.78	2.93	<0.05	0.02	0.05	0.015	0.04	12.0	18.5	0.30	310	0.39	<0.01	0.66
ZZ120214		14.6	1.77	2.90	<0.05	0.03	0.06	0.015	0.05	10.8	18.3	0.32	431	0.47	<0.01	0.58
ZZ120215		16.3	1.73	2.79	<0.05	0.03	0.05	0.015	0.05	11.2	18.0	0.31	476	0.40	<0.01	0.57
ZZ120216		18.0	1.91	2.86	<0.05	0.04	0.06	0.017	0.04	12.1	17.7	0.31	515	0.59	<0.01	0.60
ZZ120217		14.2	1.93	3.10	<0.05	0.03	0.06	0.017	0.05	13.0	19.2	0.32	359	0.42	<0.01	0.69
ZZ120218		15.5	1.80	3.09	<0.05	0.03	0.06	0.017	0.05	12.7	19.3	0.30	287	0.45	<0.01	0.62
ZZ120219		21.4	2.55	2.62	0.05	0.06	0.04	0.017	0.05	18.9	18.6	0.33	297	0.73	<0.01	0.64
ZZ120442		11.3	2.31	4.43	<0.05	<0.02	0.03	0.019	0.05	13.9	14.6	0.24	250	1.28	<0.01	0.74
ZZ120443		17.9	2.57	3.77	<0.05	<0.02	0.04	0.019	0.04	16.5	18.9	0.35	266	0.91	<0.01	0.83
ZZ120444		19.8	2.55	3.59	<0.05	<0.02	0.03	0.020	0.04	17.7	18.2	0.34	253	0.85	<0.01	0.88
ZZ120445		16.8	2.49	3.55	<0.05	<0.02	0.03	0.017	0.04	16.8	18.7	0.32	254	0.77	<0.01	0.81
ZZ120446		16.7	2.11	3.70	<0.05	<0.02	0.03	0.017	0.05	13.7	12.9	0.26	303	0.88	<0.01	0.52
ZZ120447		14.4	2.07	2.99	<0.05	<0.02	0.01	0.014	0.06	15.6	14.5	0.27	349	0.63	<0.01	0.47



ALS Canada Ltd.
 2103 Dollarton Hwy
 North Vancouver BC V7H 0A7
 Phone: +1 (604) 984 0221 Fax: +1 (604) 984 0218
 www.alsglobal.com/geochemistry

To: STRATEGIC METALS LTD.
 C/ O ARCHER, CATHRO & ASSOCIATES (1981)
 LIMITED
 1016- 510 W HASTINGS ST
 VANCOUVER BC V6B 1L8

Page: 2 - C
 Total # Pages: 3 (A - D)
 Plus Appendix Pages
 Finalized Date: 17- SEP- 2017
 Account: MTT

Project: News

CERTIFICATE OF ANALYSIS WH17178177

Sample Description	Method Analyte Units LOR	ME- MS41	ME- MS41	ME- MS41	ME- MS41	ME- MS41	ME- MS41	ME- MS41	ME- MS41	ME- MS41	ME- MS41	ME- MS41	ME- MS41	ME- MS41	ME- MS41	
		Ni	P	Pb	Rb	Re	S	Sb	Sc	Se	Sn	Sr	Ta	Te	Th	Ti
		ppm	ppm	ppm	ppm	ppm	%	ppm	ppm	ppm	ppm	ppm	ppm	ppm	ppm	ppm
		0.2	10	0.2	0.1	0.001	0.01	0.05	0.1	0.2	0.2	0.2	0.01	0.01	0.2	0.005
ZZ120186		16.8	360	15.1	7.5	<0.001	<0.01	0.48	1.7	0.3	0.5	9.0	<0.01	0.01	3.1	0.025
ZZ120187		16.5	860	9.3	4.6	<0.001	0.03	0.44	1.1	0.8	0.2	21.5	<0.01	0.02	0.5	0.012
ZZ120188		18.9	500	9.7	5.7	<0.001	<0.01	0.42	1.4	0.4	0.2	15.8	<0.01	0.01	2.8	0.019
ZZ120189		26.4	650	14.6	5.8	0.001	0.05	0.46	2.6	1.3	0.2	55.0	<0.01	0.02	2.5	0.011
ZZ120190		27.1	680	18.2	8.1	<0.001	0.04	0.55	3.4	0.9	0.3	36.4	<0.01	0.02	3.3	0.012
ZZ120191		29.0	770	15.9	7.3	<0.001	0.03	0.52	2.9	0.8	0.2	43.7	<0.01	0.02	2.4	0.012
ZZ120192		24.8	700	15.6	6.3	<0.001	0.04	0.56	3.0	0.6	0.2	38.6	<0.01	0.03	2.5	0.011
ZZ120193		17.9	510	11.9	5.6	<0.001	0.01	0.36	1.4	0.4	0.2	20.3	<0.01	0.01	1.4	0.016
ZZ120194		25.6	570	13.7	5.9	<0.001	<0.01	0.60	2.3	0.4	0.2	27.8	<0.01	0.02	3.6	0.014
ZZ120195		25.5	350	18.1	5.7	<0.001	0.01	0.62	1.6	0.4	0.2	30.2	<0.01	0.02	3.2	0.009
ZZ120196		26.6	580	16.4	6.9	<0.001	0.02	0.63	2.4	0.6	0.2	25.9	<0.01	0.03	3.1	0.012
ZZ120197		26.8	710	19.4	6.4	<0.001	0.02	0.51	3.1	0.8	0.2	31.7	<0.01	0.01	3.0	0.012
ZZ120198		27.3	640	20.3	7.1	<0.001	0.02	0.48	2.9	0.6	0.2	30.7	<0.01	0.02	3.3	0.012
ZZ120199		25.9	620	16.5	7.2	<0.001	0.01	0.44	2.8	0.6	0.3	24.9	<0.01	0.03	3.8	0.012
ZZ120200		24.0	720	22.0	5.6	<0.001	0.02	0.53	2.1	0.6	0.2	30.8	<0.01	0.02	3.3	0.013
ZZ120201		21.2	710	12.6	6.0	<0.001	0.02	0.45	2.4	0.7	0.3	39.0	<0.01	0.02	2.4	0.017
ZZ120202		21.8	660	13.2	7.8	<0.001	0.04	0.44	2.2	0.4	0.2	52.5	<0.01	0.02	1.7	0.013
ZZ120203		23.3	620	14.8	7.7	<0.001	0.06	0.53	2.5	0.8	0.3	46.2	<0.01	0.01	1.8	0.012
ZZ120204		23.1	800	11.3	10.1	<0.001	0.05	0.51	2.6	0.6	0.3	47.2	<0.01	0.03	1.8	0.014
ZZ120205		20.7	600	11.8	7.9	<0.001	0.04	0.44	2.4	0.4	0.3	55.5	<0.01	0.03	1.9	0.014
ZZ120206		20.7	610	11.8	7.2	<0.001	0.05	0.53	2.3	0.4	0.3	62.9	<0.01	0.03	1.7	0.013
ZZ120207		21.1	570	10.9	7.1	<0.001	0.04	0.44	2.2	0.4	0.3	59.0	<0.01	0.02	1.6	0.015
ZZ120208		18.7	570	12.4	6.9	<0.001	0.05	0.42	2.2	0.4	0.3	56.8	<0.01	0.02	1.4	0.015
ZZ120209		17.9	630	10.2	7.8	<0.001	0.05	0.46	2.1	0.4	0.3	64.5	<0.01	0.02	1.3	0.014
ZZ120210		16.9	610	12.5	6.6	<0.001	0.04	0.45	2.0	0.6	0.3	45.6	<0.01	0.02	1.3	0.014
ZZ120211		19.5	610	11.0	6.3	<0.001	0.05	0.42	2.2	0.8	0.3	41.7	<0.01	0.03	1.8	0.014
ZZ120212		17.7	530	8.9	5.0	0.001	0.02	0.31	1.9	0.4	0.2	36.2	<0.01	0.02	2.2	0.014
ZZ120213		16.0	450	11.0	5.9	<0.001	0.02	0.32	2.3	0.4	0.3	46.5	<0.01	0.02	2.4	0.016
ZZ120214		18.5	550	9.7	6.3	0.001	0.04	0.38	2.0	0.5	0.2	56.6	<0.01	0.02	1.6	0.014
ZZ120215		19.5	590	9.8	6.6	0.001	0.05	0.40	1.9	0.6	0.2	59.4	<0.01	0.03	1.6	0.014
ZZ120216		20.1	590	10.5	5.8	<0.001	0.05	0.48	2.2	0.6	0.2	53.8	<0.01	0.03	2.0	0.013
ZZ120217		18.9	610	11.0	7.4	<0.001	0.04	0.41	2.4	0.7	0.3	48.8	<0.01	0.02	2.5	0.016
ZZ120218		18.7	600	10.9	6.7	<0.001	0.05	0.44	2.2	0.7	0.2	49.4	<0.01	0.02	2.0	0.014
ZZ120219		23.5	510	15.2	4.6	<0.001	<0.01	0.65	2.5	0.4	0.2	25.7	<0.01	0.03	5.7	0.020
ZZ120442		14.6	600	11.8	9.3	<0.001	<0.01	0.48	1.4	0.4	0.5	10.9	<0.01	0.03	0.6	0.023
ZZ120443		20.3	410	11.0	6.9	<0.001	<0.01	0.58	2.4	0.5	0.3	7.4	<0.01	0.02	3.1	0.026
ZZ120444		22.2	440	11.3	6.5	<0.001	<0.01	0.61	2.9	0.6	0.3	7.4	<0.01	0.02	3.9	0.030
ZZ120445		20.7	430	10.9	6.6	<0.001	<0.01	0.55	2.4	0.4	0.3	8.2	<0.01	0.01	3.5	0.029
ZZ120446		16.8	760	11.4	8.3	<0.001	<0.01	0.43	1.0	0.5	0.4	10.4	<0.01	0.02	0.3	0.020
ZZ120447		16.5	480	9.6	5.6	<0.001	<0.01	0.46	1.3	0.3	0.2	17.0	<0.01	0.02	0.7	0.021



ALS Canada Ltd.
 2103 Dollarton Hwy
 North Vancouver BC V7H 0A7
 Phone: +1 (604) 984 0221 Fax: +1 (604) 984 0218
 www.alsglobal.com/geochemistry

To: STRATEGIC METALS LTD.
 C/ O ARCHER, CATHRO & ASSOCIATES (1981)
 LIMITED
 1016- 510 W HASTINGS ST
 VANCOUVER BC V6B 1L8

Page: 2 - D
 Total # Pages: 3 (A - D)
 Plus Appendix Pages
 Finalized Date: 17- SEP- 2017
 Account: MTT

Project: News

CERTIFICATE OF ANALYSIS WH17178177

Sample Description	Method Analyte Units LOR	ME- MS41 TI ppm 0.02	ME- MS41 U ppm 0.05	ME- MS41 V ppm 1	ME- MS41 W ppm 0.05	ME- MS41 Y ppm 0.05	ME- MS41 Zn ppm 2	ME- MS41 Zr ppm 0.5	Au- ICP21 Au ppm 0.001
ZZ120186		0.09	0.51	35	0.20	2.76	45	0.5	<0.001
ZZ120187		0.06	1.01	22	0.12	4.66	48	<0.5	<0.001
ZZ120188		0.05	0.41	21	0.12	2.79	57	0.7	<0.001
ZZ120189		0.06	1.51	22	0.09	5.19	68	1.7	<0.001
ZZ120190		0.08	1.68	28	0.10	6.26	78	1.5	0.001
ZZ120191		0.07	1.16	25	0.11	6.09	77	1.1	0.004
ZZ120192		0.08	1.58	27	0.12	6.06	52	1.0	0.002
ZZ120193		0.05	0.69	24	0.09	3.04	48	<0.5	<0.001
ZZ120194		0.06	0.67	20	0.16	4.39	70	1.0	<0.001
ZZ120195		0.06	0.85	14	0.07	4.18	74	0.7	<0.001
ZZ120196		0.06	0.87	20	0.10	5.54	69	1.3	0.005
ZZ120197		0.07	1.19	22	0.09	6.93	67	1.6	0.001
ZZ120198		0.07	1.01	24	0.43	6.17	69	1.6	<0.001
ZZ120199		0.06	1.02	23	0.27	5.37	66	1.4	<0.001
ZZ120200		0.05	0.79	19	0.09	4.83	65	1.5	<0.001
ZZ120201		0.07	0.99	24	0.10	5.50	66	1.2	0.001
ZZ120202		0.07	1.05	24	0.35	4.87	66	1.1	<0.001
ZZ120203		0.08	1.26	25	0.08	6.41	65	1.3	<0.001
ZZ120204		0.09	1.04	27	0.19	5.34	75	1.1	0.002
ZZ120205		0.08	1.11	23	0.11	5.18	70	1.0	<0.001
ZZ120206		0.06	1.09	23	0.14	5.19	69	1.1	<0.001
ZZ120207		0.07	1.00	22	0.11	5.23	64	1.0	<0.001
ZZ120208		0.07	1.09	24	0.13	4.75	55	1.0	0.001
ZZ120209		0.08	1.11	23	0.23	4.98	59	0.9	<0.001
ZZ120210		0.07	1.17	25	0.16	5.10	52	0.9	<0.001
ZZ120211		0.06	1.14	23	0.19	4.92	55	0.8	0.001
ZZ120212		0.05	0.92	19	0.29	4.20	46	0.7	0.001
ZZ120213		0.06	1.01	22	0.10	4.44	49	0.9	<0.001
ZZ120214		0.06	0.95	21	0.10	4.47	57	1.0	0.005
ZZ120215		0.06	1.02	21	0.08	4.59	61	1.0	<0.001
ZZ120216		0.06	1.14	22	0.11	5.26	55	1.1	<0.001
ZZ120217		0.07	1.27	23	0.46	5.02	58	1.2	0.002
ZZ120218		0.07	1.46	23	0.14	5.12	51	1.1	0.001
ZZ120219		0.06	0.66	19	0.09	6.03	61	2.7	0.004
ZZ120442		0.09	0.55	41	0.22	2.75	48	<0.5	<0.001
ZZ120443		0.08	0.70	31	0.16	3.99	54	<0.5	0.002
ZZ120444		0.09	0.87	30	0.20	4.26	55	0.5	<0.001
ZZ120445		0.07	0.65	28	0.17	3.55	53	0.5	0.001
ZZ120446		0.07	0.72	29	0.15	3.07	46	<0.5	0.001
ZZ120447		0.05	0.41	22	0.20	2.96	52	<0.5	<0.001



ALS Canada Ltd.
 2103 Dollarton Hwy
 North Vancouver BC V7H 0A7
 Phone: +1 (604) 984 0221 Fax: +1 (604) 984 0218
 www.alsglobal.com/geochemistry

To: STRATEGIC METALS LTD.
 C/ O ARCHER, CATHRO & ASSOCIATES (1981)
 LIMITED
 1016- 510 W HASTINGS ST
 VANCOUVER BC V6B 1L8

Page: 3 - A
 Total # Pages: 3 (A - D)
 Plus Appendix Pages
 Finalized Date: 17- SEP- 2017
 Account: MTT

Project: News

CERTIFICATE OF ANALYSIS WH17178177

Sample Description	Method Analyte Units LOR	WEI- 21 Recvd Wt. kg	ME- MS41 Ag ppm	ME- MS41 Al %	ME- MS41 As ppm	ME- MS41 Au ppm	ME- MS41 B ppm	ME- MS41 Ba ppm	ME- MS41 Be ppm	ME- MS41 Bi ppm	ME- MS41 Ca %	ME- MS41 Cd ppm	ME- MS41 Ce ppm	ME- MS41 Co ppm	ME- MS41 Cr ppm	ME- MS41 Cs ppm
		0.02	0.01	0.01	0.1	0.02	10	10	0.05	0.01	0.01	0.01	0.02	0.1	1	0.05
ZZ120448		0.45	0.06	1.06	9.7	<0.02	<10	100	0.31	0.17	0.09	0.10	32.7	8.3	20	0.76
ZZ120449		0.34	0.04	1.26	9.2	<0.02	<10	150	0.33	0.19	0.09	0.09	39.6	9.9	25	0.86
ZZ120450		0.39	0.08	1.14	7.5	<0.02	<10	130	0.34	0.17	0.10	0.08	35.4	6.5	22	0.81
ZZ120451		0.37	0.06	1.12	7.7	<0.02	<10	140	0.35	0.17	0.10	0.09	38.0	7.4	23	0.80
ZZ120452		0.34	0.07	0.98	7.2	<0.02	<10	140	0.29	0.17	0.13	0.13	31.4	8.3	22	0.71
ZZ120453		0.37	0.06	1.10	10.5	<0.02	<10	120	0.38	0.18	0.12	0.10	35.2	8.2	22	0.88
ZZ120454		0.27	0.11	1.13	6.6	<0.02	<10	210	0.28	0.17	0.17	0.19	24.7	7.6	23	0.85
ZZ120455		0.37	0.14	1.06	9.1	<0.02	<10	280	0.23	0.18	0.11	0.10	29.4	5.1	20	0.74



ALS Canada Ltd.
 2103 Dollarton Hwy
 North Vancouver BC V7H 0A7
 Phone: +1 (604) 984 0221 Fax: +1 (604) 984 0218
 www.alsglobal.com/geochemistry

To: STRATEGIC METALS LTD.
 C/ O ARCHER, CATHRO & ASSOCIATES (1981)
 LIMITED
 1016- 510 W HASTINGS ST
 VANCOUVER BC V6B 1L8

Page: 3 - B
 Total # Pages: 3 (A - D)
 Plus Appendix Pages
 Finalized Date: 17- SEP- 2017
 Account: MTT

Project: News

CERTIFICATE OF ANALYSIS WH17178177

Sample Description	Method	Analyte	Units	LOR	ME- MS41	ME- MS41	ME- MS41	ME- MS41	ME- MS41	ME- MS41	ME- MS41	ME- MS41	ME- MS41	ME- MS41	ME- MS41				
					Cu	Fe	Ga	Ge	Hf	Hg	In	K	La	Li	Mg	Mn	Mo	Na	Nb
					ppm	%	ppm	ppm	ppm	ppm	ppm	%	ppm	ppm	%	ppm	ppm	%	ppm
					0.2	0.01	0.05	0.05	0.02	0.01	0.005	0.01	0.2	0.1	0.01	5	0.05	0.01	0.05
ZZ120448					18.2	2.50	3.29	<0.05	<0.02	0.02	0.017	0.05	16.4	18.3	0.31	318	0.73	<0.01	0.75
ZZ120449					18.8	2.62	4.00	<0.05	<0.02	0.03	0.019	0.05	20.1	20.5	0.36	433	0.83	<0.01	0.80
ZZ120450					15.9	2.40	3.68	<0.05	<0.02	0.03	0.016	0.05	17.9	18.3	0.33	257	0.68	<0.01	0.68
ZZ120451					17.1	2.39	3.50	0.05	<0.02	0.03	0.018	0.04	19.2	18.2	0.33	258	0.73	<0.01	0.79
ZZ120452					15.4	2.29	3.31	<0.05	<0.02	0.02	0.017	0.05	15.7	17.5	0.31	630	0.64	<0.01	0.64
ZZ120453					19.5	2.69	3.40	<0.05	<0.02	0.02	0.016	0.04	18.3	20.2	0.34	328	0.70	<0.01	0.72
ZZ120454					11.3	2.14	3.48	<0.05	<0.02	0.04	0.020	0.04	12.9	19.1	0.31	441	0.69	<0.01	0.53
ZZ120455					8.3	1.93	4.35	<0.05	<0.02	0.02	0.016	0.05	15.1	13.7	0.27	251	0.95	<0.01	1.02



ALS Canada Ltd.
 2103 Dollarton Hwy
 North Vancouver BC V7H 0A7
 Phone: +1 (604) 984 0221 Fax: +1 (604) 984 0218
 www.alsglobal.com/geochemistry

To: STRATEGIC METALS LTD.
 C/ O ARCHER, CATHRO & ASSOCIATES (1981)
 LIMITED
 1016- 510 W HASTINGS ST
 VANCOUVER BC V6B 1L8

Page: 3 - C
 Total # Pages: 3 (A - D)
 Plus Appendix Pages
 Finalized Date: 17- SEP- 2017
 Account: MTT

Project: News

CERTIFICATE OF ANALYSIS WH17178177

Sample Description	Method	Analyte	Units	LOR	ME- MS41	ME- MS41	ME- MS41	ME- MS41	ME- MS41	ME- MS41	ME- MS41	ME- MS41	ME- MS41	ME- MS41	ME- MS41	ME- MS41				
					Ni	P	Pb	Rb	Re	S	Sb	Sc	Se	Sn	Sr	Ta	Te	Th	Ti	
					ppm	ppm	ppm	ppm	ppm	%	ppm	ppm	ppm	ppm	ppm	ppm	ppm	ppm	ppm	%
					0.2	10	0.2	0.1	0.001	0.01	0.05	0.1	0.2	0.2	0.2	0.01	0.01	0.2	0.005	
ZZ120448					19.6	460	12.4	5.7	<0.001	<0.01	0.53	2.1	0.4	0.3	9.7	<0.01	0.03	3.8	0.026	
ZZ120449					21.7	400	11.5	6.9	<0.001	<0.01	0.53	2.7	0.5	0.4	10.5	<0.01	0.03	3.1	0.027	
ZZ120450					18.5	480	10.3	6.3	<0.001	<0.01	0.48	2.0	0.4	0.3	11.2	<0.01	0.02	1.7	0.026	
ZZ120451					19.8	500	11.1	6.2	<0.001	<0.01	0.51	2.6	0.5	0.3	11.1	<0.01	0.02	3.0	0.028	
ZZ120452					20.8	520	10.5	6.6	<0.001	<0.01	0.51	2.0	0.4	0.3	13.5	<0.01	0.02	2.1	0.024	
ZZ120453					21.9	500	13.2	5.9	<0.001	<0.01	0.54	2.3	0.3	0.3	12.6	<0.01	0.03	2.6	0.026	
ZZ120454					18.0	750	11.4	7.3	<0.001	0.02	0.35	1.4	0.5	0.3	16.7	<0.01	0.02	0.6	0.016	
ZZ120455					13.1	410	7.8	8.5	<0.001	<0.01	0.35	2.1	0.3	0.5	11.8	<0.01	0.02	2.8	0.028	

***** See Appendix Page for comments regarding this certificate *****



ALS Canada Ltd.
 2103 Dollarton Hwy
 North Vancouver BC V7H 0A7
 Phone: +1 (604) 984 0221 Fax: +1 (604) 984 0218
 www.alsglobal.com/geochemistry

To: STRATEGIC METALS LTD.
 C/ O ARCHER, CATHRO & ASSOCIATES (1981)
 LIMITED
 1016- 510 W HASTINGS ST
 VANCOUVER BC V6B 1L8

Page: 3 - D
 Total # Pages: 3 (A - D)
 Plus Appendix Pages
 Finalized Date: 17- SEP- 2017
 Account: MTT

Project: News

CERTIFICATE OF ANALYSIS	WH17178177
-------------------------	------------

Sample Description	Method Analyte Units LOR	ME- MS41 Tl ppm 0.02	ME- MS41 U ppm 0.05	ME- MS41 V ppm 1	ME- MS41 W ppm 0.05	ME- MS41 Y ppm 0.05	ME- MS41 Zn ppm 2	ME- MS41 Zr ppm 0.5	Au- ICP21 Au ppm 0.001
ZZ120448		0.07	0.53	28	0.15	3.43	56	<0.5	0.008
ZZ120449		0.08	0.63	31	0.16	4.21	56	<0.5	<0.001
ZZ120450		0.06	0.57	27	0.16	4.08	52	<0.5	<0.001
ZZ120451		0.08	0.68	28	0.17	5.00	53	<0.5	0.001
ZZ120452		0.06	0.56	25	0.14	3.71	59	<0.5	<0.001
ZZ120453		0.06	0.54	25	0.16	4.47	62	<0.5	0.001
ZZ120454		0.07	0.79	28	0.20	4.00	68	<0.5	<0.001
ZZ120455		0.08	0.54	39	0.21	3.10	45	<0.5	0.002



ALS Canada Ltd.
2103 Dollarton Hwy
North Vancouver BC V7H 0A7
Phone: +1 (604) 984 0221 Fax: +1 (604) 984 0218
www.alsglobal.com/geochemistry

To: **STRATEGIC METALS LTD.**
C/ O ARCHER, CATHRO & ASSOCIATES (1981)
LIMITED
1016- 510 W HASTINGS ST
VANCOUVER BC V6B 1L8

Page: Appendix 1
Total # Appendix Pages: 1
Finalized Date: 17- SEP- 2017
Account: MTT

Project: News

CERTIFICATE OF ANALYSIS WH17178177

CERTIFICATE COMMENTS

ANALYTICAL COMMENTS

Applies to Method: Gold determinations by this method are semi- quantitative due to the small sample weight used (0.5g).
ME- MS41

LABORATORY ADDRESSES

Applies to Method: Processed at ALS Whitehorse located at 78 Mt. Sima Rd, Whitehorse, YT, Canada.
LOG- 22 SCR- 41 WEI- 21

Applies to Method: Processed at ALS Vancouver located at 2103 Dollarton Hwy, North Vancouver, BC, Canada.
Au- ICP21 ME- MS41



ALS Canada Ltd.
 2103 Dollarton Hwy
 North Vancouver BC V7H 0A7
 Phone: +1 (604) 984 0221 Fax: +1 (604) 984 0218
 www.alsglobal.com/geochemistry

To: **STRATEGIC METALS LTD.**
C/ O ARCHER, CATHRO & ASSOCIATES (1981)
LIMITED
1016- 510 W HASTINGS ST
VANCOUVER BC V6B 1L8

Page: 1
Total # Pages: 2 (A - D)
Plus Appendix Pages
Finalized Date: 26- SEP- 2017
Account: MTT

CERTIFICATE WH17178181

Project: News

This report is for 5 Rock samples submitted to our lab in Whitehorse, YT, Canada on 23- AUG- 2017.

The following have access to data associated with this certificate:

ANDREW CARNE	JOAN MARIACHER	JACK MORTON
--------------	----------------	-------------

SAMPLE PREPARATION	
ALS CODE	DESCRIPTION
WEI- 21	Received Sample Weight
LOG- 21	Sample logging - ClientBarCode
CRU- 31	Fine crushing - 70% <2mm
SPL- 21	Split sample - riffle splitter
PUL- 31	Pulverize split to 85% < 75 um
CRU- QC	Crushing QC Test
PUL- QC	Pulverizing QC Test

ANALYTICAL PROCEDURES		
ALS CODE	DESCRIPTION	INSTRUMENT
Au- ICP21	Au 30g FA ICP- AES Finish	ICP- AES
ME- MS41	Ultra Trace Aqua Regia ICP- MS	

To: **STRATEGIC METALS LTD.**
ATTN: JOAN MARIACHER
C/ O ARCHER, CATHRO & ASSOCIATES (1981) LIMITED
1016- 510 W HASTINGS ST
VANCOUVER BC V6B 1L8

This is the Final Report and supersedes any preliminary report with this certificate number. Results apply to samples as submitted. All pages of this report have been checked and approved for release.

***** See Appendix Page for comments regarding this certificate *****

Signature: 
 Colin Ramshaw, Vancouver Laboratory Manager



ALS Canada Ltd.
 2103 Dollarton Hwy
 North Vancouver BC V7H 0A7
 Phone: +1 (604) 984 0221 Fax: +1 (604) 984 0218
 www.alsglobal.com/geochemistry

To: STRATEGIC METALS LTD.
 C/ O ARCHER, CATHRO & ASSOCIATES (1981)
 LIMITED
 1016- 510 W HASTINGS ST
 VANCOUVER BC V6B 1L8

Page: 2 - A
 Total # Pages: 2 (A - D)
 Plus Appendix Pages
 Finalized Date: 26- SEP- 2017
 Account: MTT

Project: News

CERTIFICATE OF ANALYSIS WH17178181

Sample Description	Method Analyte Units LOR	WEI- 21 Recvd Wt. kg	ME- MS41 Ag ppm	ME- MS41 Al %	ME- MS41 As ppm	ME- MS41 Au ppm	ME- MS41 B ppm	ME- MS41 Ba ppm	ME- MS41 Be ppm	ME- MS41 Bi ppm	ME- MS41 Ca %	ME- MS41 Cd ppm	ME- MS41 Ce ppm	ME- MS41 Co ppm	ME- MS41 Cr ppm	ME- MS41 Cs ppm
		0.02	0.01	0.01	0.1	0.02	10	10	0.05	0.01	0.01	0.01	0.02	0.1	1	0.05
W590501		1.03	0.03	0.23	4.7	<0.02	<10	40	0.06	0.06	0.01	0.08	23.8	1.5	11	0.16
W590502		0.80	0.02	0.14	17.7	<0.02	<10	40	0.09	0.05	2.11	0.04	5.11	2.4	10	0.18
W590503		0.82	0.01	0.04	0.6	<0.02	<10	10	<0.05	0.02	0.03	0.01	1.00	0.2	13	<0.05
W590504		0.83	0.01	0.01	10.1	<0.02	<10	10	<0.05	0.02	0.03	0.01	3.71	6.1	16	<0.05
W590505		1.28	<0.01	0.05	0.9	<0.02	<10	60	0.06	0.01	1.64	0.03	2.96	1.3	10	<0.05



ALS Canada Ltd.
 2103 Dollarton Hwy
 North Vancouver BC V7H 0A7
 Phone: +1 (604) 984 0221 Fax: +1 (604) 984 0218
 www.alsglobal.com/geochemistry

To: STRATEGIC METALS LTD.
 C/ O ARCHER, CATHRO & ASSOCIATES (1981)
 LIMITED
 1016- 510 W HASTINGS ST
 VANCOUVER BC V6B 1L8

Page: 2 - B
 Total # Pages: 2 (A - D)
 Plus Appendix Pages
 Finalized Date: 26- SEP- 2017
 Account: MTT

Project: News

CERTIFICATE OF ANALYSIS WH17178181

Sample Description	Method	Analyte	Units	LOR	ME- MS41	ME- MS41	ME- MS41	ME- MS41	ME- MS41	ME- MS41	ME- MS41	ME- MS41	ME- MS41	ME- MS41	ME- MS41	ME- MS41			
					Cu	Fe	Ga	Ge	Hf	Hg	In	K	La	Li	Mg	Mn	Mo	Na	Nb
					ppm	%	ppm	ppm	ppm	ppm	ppm	%	ppm	ppm	%	ppm	ppm	%	ppm
					0.2	0.01	0.05	0.05	0.02	0.01	0.005	0.01	0.2	0.1	0.01	5	0.05	0.01	0.05
W590501					7.3	0.80	0.54	0.09	0.10	<0.01	<0.005	0.09	10.6	1.1	0.01	147	0.96	0.01	0.05
W590502					2.8	2.66	0.36	0.09	0.09	0.01	0.020	0.07	2.3	0.5	0.36	817	0.97	0.01	0.07
W590503					0.9	0.40	0.09	0.07	<0.02	<0.01	<0.005	<0.01	0.4	0.5	<0.01	116	1.10	<0.01	0.10
W590504					12.4	0.68	0.10	0.07	<0.02	<0.01	<0.005	<0.01	1.9	0.1	<0.01	54	1.58	<0.01	0.12
W590505					0.9	1.64	0.13	0.08	0.11	0.01	0.023	0.01	1.2	0.2	0.53	880	0.90	0.03	0.07

***** See Appendix Page for comments regarding this certificate *****



ALS Canada Ltd.
 2103 Dollarton Hwy
 North Vancouver BC V7H 0A7
 Phone: +1 (604) 984 0221 Fax: +1 (604) 984 0218
 www.alsglobal.com/geochemistry

To: STRATEGIC METALS LTD.
 C/ O ARCHER, CATHRO & ASSOCIATES (1981)
 LIMITED
 1016- 510 W HASTINGS ST
 VANCOUVER BC V6B 1L8

Page: 2 - C
 Total # Pages: 2 (A - D)
 Plus Appendix Pages
 Finalized Date: 26- SEP- 2017
 Account: MTT

Project: News

CERTIFICATE OF ANALYSIS WH17178181

Sample Description	Method Analyte Units LOR	ME- MS41 Ni ppm	ME- MS41 P ppm	ME- MS41 Pb ppm	ME- MS41 Rb ppm	ME- MS41 Re ppm	ME- MS41 S %	ME- MS41 Sb ppm	ME- MS41 Sc ppm	ME- MS41 Se ppm	ME- MS41 Sn ppm	ME- MS41 Sr ppm	ME- MS41 Ta ppm	ME- MS41 Te ppm	ME- MS41 Th ppm	ME- MS41 Ti %
W590501		6.8	60	5.8	3.8	<0.001	<0.01	0.12	0.4	<0.2	<0.2	29.9	<0.01	0.01	5.6	<0.005
W590502		6.4	480	10.0	2.9	<0.001	0.01	0.08	4.9	0.2	<0.2	253	<0.01	0.01	1.8	<0.005
W590503		1.2	80	7.9	0.2	<0.001	<0.01	<0.05	0.3	<0.2	<0.2	3.0	<0.01	<0.01	<0.2	<0.005
W590504		2.1	110	1.4	0.1	<0.001	0.17	0.08	0.1	<0.2	<0.2	2.2	<0.01	0.02	<0.2	<0.005
W590505		2.8	160	1.4	0.5	<0.001	0.04	0.06	0.9	<0.2	<0.2	112.5	<0.01	<0.01	1.2	<0.005



ALS Canada Ltd.
 2103 Dollarton Hwy
 North Vancouver BC V7H 0A7
 Phone: +1 (604) 984 0221 Fax: +1 (604) 984 0218
 www.alsglobal.com/geochemistry

To: STRATEGIC METALS LTD.
 C/ O ARCHER, CATHRO & ASSOCIATES (1981)
 LIMITED
 1016- 510 W HASTINGS ST
 VANCOUVER BC V6B 1L8

Page: 2 - D
 Total # Pages: 2 (A - D)
 Plus Appendix Pages
 Finalized Date: 26- SEP- 2017
 Account: MTT

Project: News

CERTIFICATE OF ANALYSIS WH17178181

Sample Description	Method Analyte Units LOR	ME- MS41 Tl ppm 0.02	ME- MS41 U ppm 0.05	ME- MS41 V ppm 1	ME- MS41 W ppm 0.05	ME- MS41 Y ppm 0.05	ME- MS41 Zn ppm 2	ME- MS41 Zr ppm 0.5	Au- ICP21 Au ppm 0.001
W590501		0.03	0.56	2	<0.05	1.21	12	3.7	<0.001
W590502		0.02	0.27	2	0.06	3.94	16	3.4	<0.001
W590503		<0.02	<0.05	<1	<0.05	0.89	3	<0.5	<0.001
W590504		<0.02	<0.05	<1	<0.05	0.34	<2	<0.5	0.028
W590505		<0.02	0.17	5	<0.05	2.88	6	3.8	<0.001



ALS Canada Ltd.
2103 Dollarton Hwy
North Vancouver BC V7H 0A7
Phone: +1 (604) 984 0221 Fax: +1 (604) 984 0218
www.alsglobal.com/geochemistry

To: STRATEGIC METALS LTD.
C/ O ARCHER, CATHRO & ASSOCIATES (1981)
LIMITED
1016- 510 W HASTINGS ST
VANCOUVER BC V6B 1L8

Page: Appendix 1
Total # Appendix Pages: 1
Finalized Date: 26- SEP- 2017
Account: MTT

Project: News

CERTIFICATE OF ANALYSIS WH17178181

CERTIFICATE COMMENTS

ANALYTICAL COMMENTS

Applies to Method: Gold determinations by this method are semi- quantitative due to the small sample weight used (0.5g).
ME- MS41

LABORATORY ADDRESSES

Applies to Method: Processed at ALS Whitehorse located at 78 Mt. Sima Rd, Whitehorse, YT, Canada.
CRU- 31 CRU- QC LOG- 21 PUL- 31
PUL- QC SPL- 21 WEI- 21

Applies to Method: Processed at ALS Vancouver located at 2103 Dollarton Hwy, North Vancouver, BC, Canada.
Au- ICP21 ME- MS41