

ARCHER, CATHRO & ASSOCIATES (1981) LIMITED
1016 - 510 West Hastings Street
Vancouver, B.C. V6B1L8

Telephone: 604-688-2568

Fax: 604-688-2578

ASSESSMENT REPORT

describing

SOIL GEOCHEMICAL SAMPLING

Field work performed on August 10, 2017

at the

NELS PROPERTY

Nels 1-24 YF07881 – YF07904

NTS 105M09

Latitude 63°38'N; Longitude 134°11'W

located in the

Mayo Mining District
Yukon Territory

prepared by

Archer, Cathro & Associates (1981) Limited

for

STRATEGIC METALS LTD.

by

K. Willms, B.Sc.

January 2018

CONTENTS

INTRODUCTION	1
PROPERTY LOCATION, CLAIM DATA AND ACCESS	1
HISTORY AND PREVIOUS WORK	1
GEOMORPHOLOGY AND CLIMATE	2
REGIONAL GEOLOGY	2
SOIL GEOCHEMISTRY	3
DISCUSSION AND CONCLUSIONS	4
REFERENCES	5

APPENDICES

I	STATEMENT OF QUALIFICATIONS
II	STATEMENT OF EXPENDITURES
III	CERTIFICATES OF ANALYSIS

FIGURES

<u>No.</u>	<u>Description</u>	<u>Follows Page</u>
1	Property Location	1
2	Claim Locations	1
3	Tectonic Setting	2
4	Regional Geology	2
5	2017 Soil Sample Locations	3

TABLES

I	Lithological Units	3
---	--------------------	---

INTRODUCTION

The Nels property covers a drainage that produced a highly anomalous gold-in-silt value during a historical reconnaissance-scale regional geochemical sampling (RGS) program. The property is located in central Yukon, within the Tombstone Gold Belt, a 550 km long belt extending across Yukon and Alaska. The Tombstone Gold Belt hosts significant gold occurrences including the Fairbanks Gold mine, the former Brewery Creek mine, the Eagle Deposit and the recent Plateau discovery, located 50 km to the southeast of the property. The property is wholly owned by Strategic Metals Ltd.

This report describes soil geochemical sampling conducted on August 10, 2017 by Archer, Cathro & Associates (1981) Limited on behalf of Strategic Metals. The author did not participate in the exploration program, but he did interpret all results from this work. The author's Statement of Qualifications is presented in Appendix I, while a Statement of Expenditures is located in Appendix II.

PROPERTY LOCATION, CLAIM DATA AND ACCESS

The Nels property consists of 24 contiguous mineral claims, which are located on NTS map sheet 105M/09 at latitude 63°38' north and longitude 134°11' west (Figure 1). The property covers an area of approximately 500 ha (5 km²). The claims are registered with the Mayo Mining Recorder in the name of Archer Cathro, which holds them in trust for Strategic Metals. Specifics concerning claim registration are tabulated below, while the locations of individual claims are shown on Figure 2.

<u>Claim Name</u>	<u>Grant Number</u>	<u>Expiry Date*</u>
Nels 1-24	YF07881-YF07904	March 21, 2023

* Expiry dates includes 2017 work.

In 2017, access to and from the Nels property was provided by a Bell 206B helicopter operated by Fireweed Helicopters Ltd. of Whitehorse from a seasonal base at the Mayo airport. Personnel were flown to the property from a camp at the nearby Lance property, located 60 km to the southeast.

The Nels property lies within the traditional territory of the Na-cho Nyäk Dun (NND) First Nation. NND has settled land claim agreements with Canada and Yukon.

HISTORY AND PREVIOUS WORK

In 1989, the Geological Survey of Canada (GSC) conducted a regional stream sediment (RGS) and water geochemical reconnaissance program across NTS map sheet 105M. A single silt sample collected from a south-flowing creek on the Nels property returned a 99th percentile value for gold (294 ppb), which was the highest value recorded during the program (Friske and Hornbrook, 1989).

STRATEGIC METALS LTD.

FIGURE 1
ARCHER, CATHRO & ASSOCIATES (1981) LIMITED

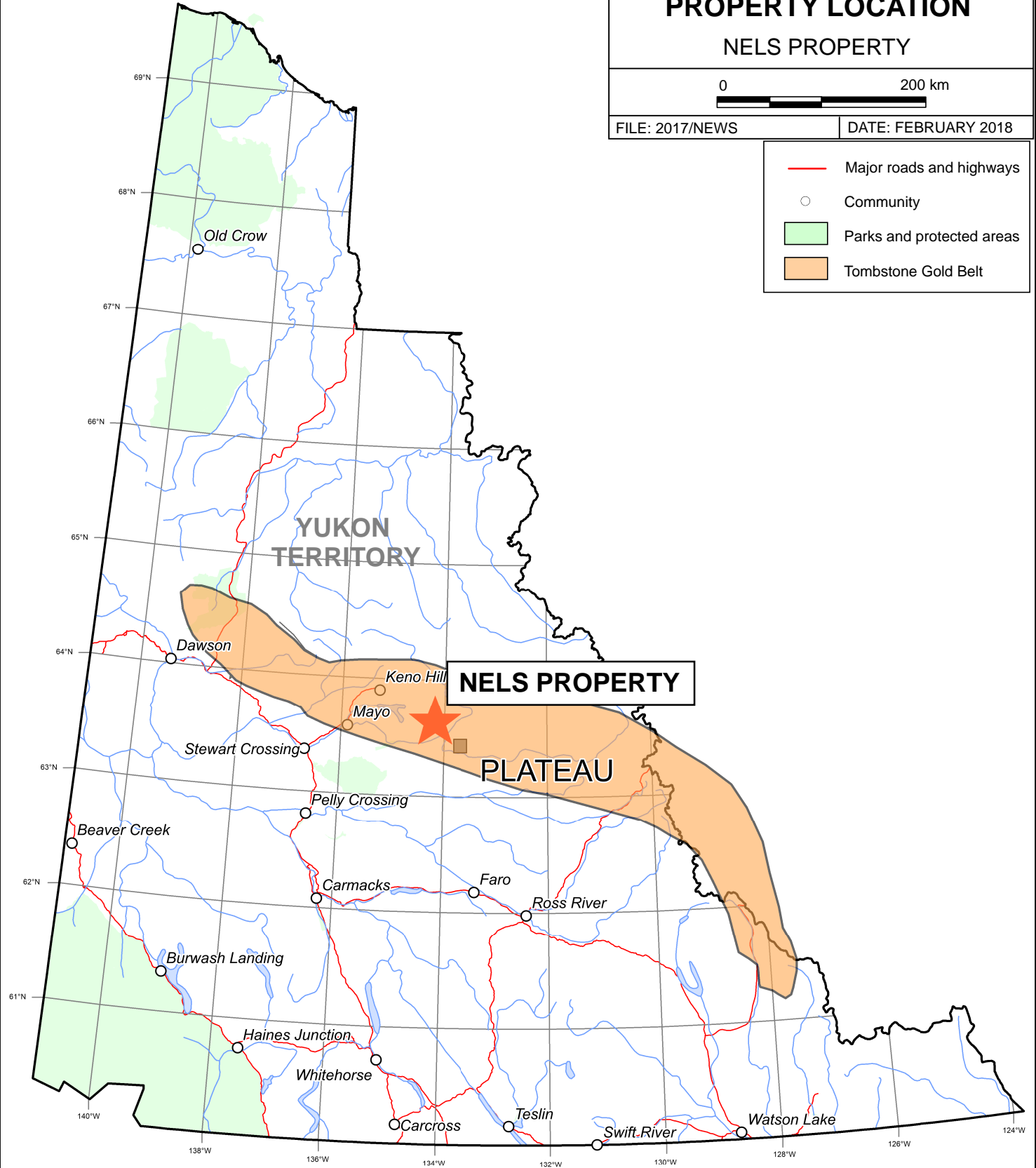
PROPERTY LOCATION
NELS PROPERTY

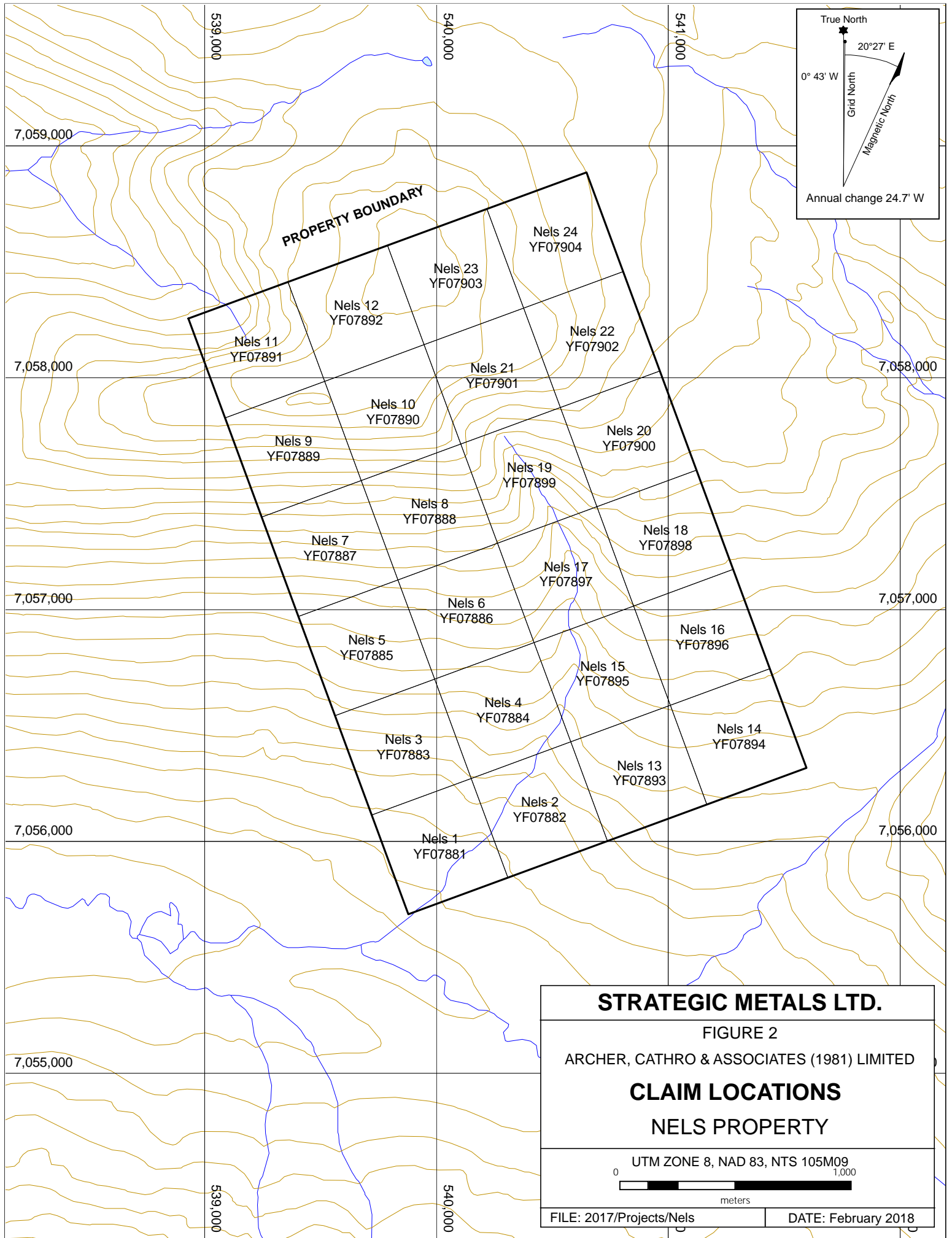


FILE: 2017/NEWS

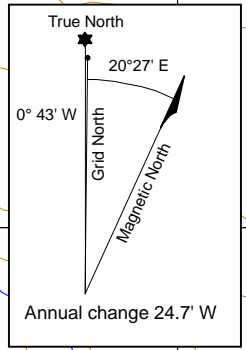
DATE: FEBRUARY 2018

- Major roads and highways
- Community
- Parks and protected areas
- Tombstone Gold Belt





PROPERTY BOUNDARY



STRATEGIC METALS LTD.	
FIGURE 2	
ARCHER, CATHRO & ASSOCIATES (1981) LIMITED	
CLAIM LOCATIONS	
NELS PROPERTY	
UTM ZONE 8, NAD 83, NTS 105M09	
FILE: 2017/Projects/Nels	DATE: February 2018

In 2012, the Yukon Geological Survey (YGS) completed a reanalysis of 861 stream sediment samples collected by the GSC in 1989 for 53 elements. Reanalysis of the highly anomalous gold-in-silt sample returned negligible gold (Jackman, 2012).

In 2017, Strategic Metals staked the current Nels property.

GEOMORPHOLOGY AND CLIMATE

The Nels property is situated in the southern part of the Ladue Range in central Yukon. It is drained by Nelson and Edwards creeks, which are part of the Mayo River watershed. The Mayo River is a tributary of the Stewart River, which ultimately discharges into the Yukon River.

The property covers a portion of Nelson Ridge, a westerly-trending ridgeline characterized by steep rounded slopes incised by north- and south- flowing creeks. Elevations on the property range from approximately 990 to 1710 m above sea level. Approximately 75% of the property lies below treeline. Vegetation at lower elevation comprises spruce and alder forests with thick blankets of moss and marshy areas. Above treeline, mosses and alpine grasses are prevalent. Outcrop is abundant at higher elevations and within the main south-flowing drainage.

Most of central Yukon, including the Nels property, was glaciated during the McConnell glaciation which occurred approximately 18,000 years ago. The area was also glaciated during the Gladstone and Reid glaciations, which occurred 60,000 and 120,000 years ago, respectively (YGS, 2017). Glacial till is present on the property; however, the thickness of the till is not known.

Climate in the Nels area is typical of northern continental regions with long, cold winters, truncated fall and spring seasons and short, mild summers. Although summers are relatively mild, snowfall can occur in any month.

GEOLOGY

In 1997, the geological division of Indian and Northern Affairs Canada published a bedrock geology map of the Mayo area (NTS map sheet 105M) at 1: 250,000 scale (Roots, 1997). Gordey and Makepeace (2003) later completed a Yukon-wide geological compilation, which updated the lithological unit names in the Mayo district. Geological unit names and bedrock geology were most recently updated in 2016 by the YGS (YGS, 2017).

The Nels property is located within the Selwyn Basin (Figure 3), a predominantly off-shelf metasedimentary and metavolcanic sequence that accumulated along the North American continental margin during Neoproterozoic to Paleozoic time. The basin is bound to the northeast by the Mackenzie Platform, a carbonate platform that formed the near-shore facies of ancient North America (Abbott, 1986). Lithological units occurring near the Nels property are described in Table I, while the regional geology is shown in Figure 4.

STRATEGIC METALS LTD.

FIGURE 3

ARCHER, CATHRO & ASSOCIATES (1981) LIMITED

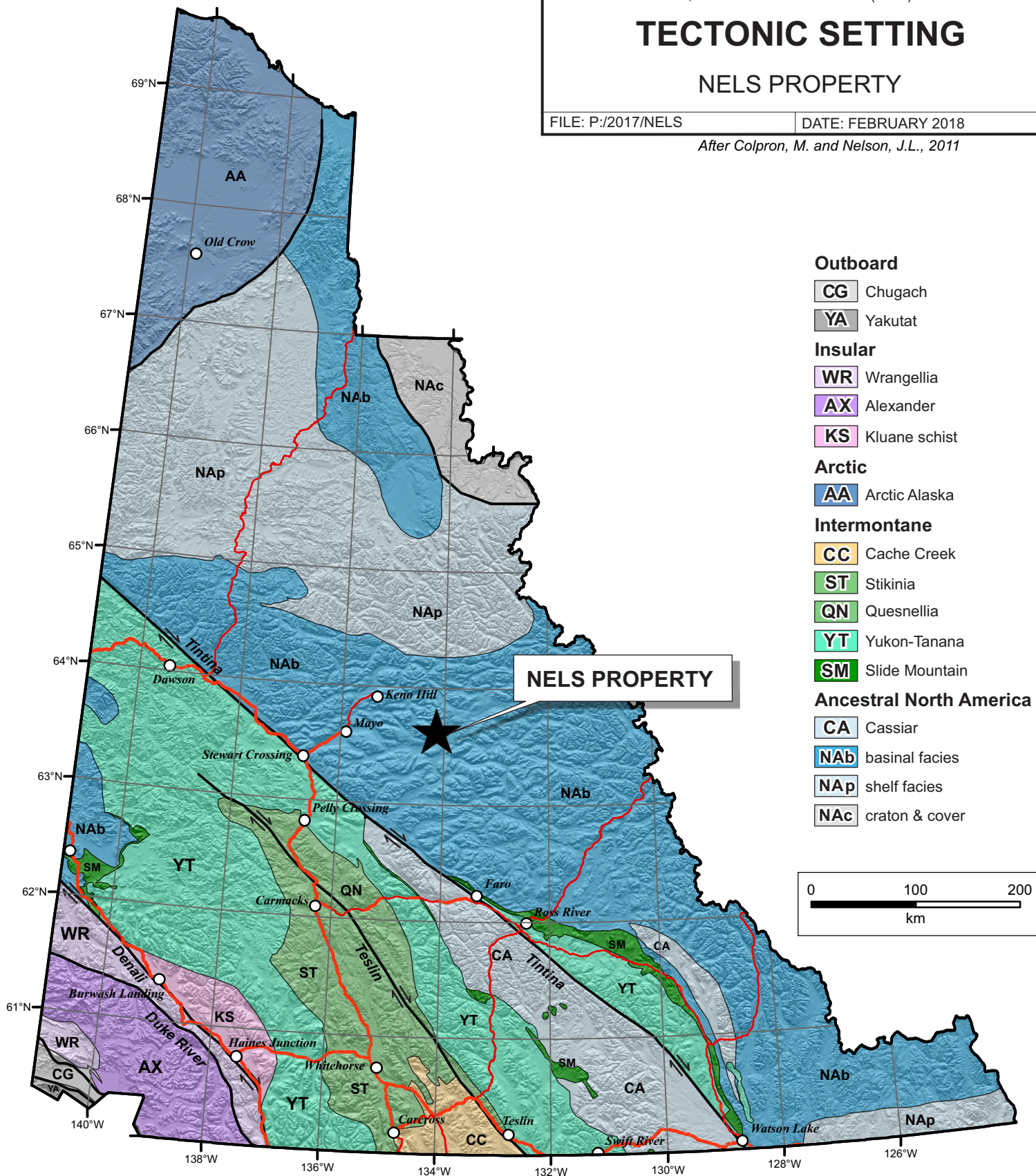
TECTONIC SETTING

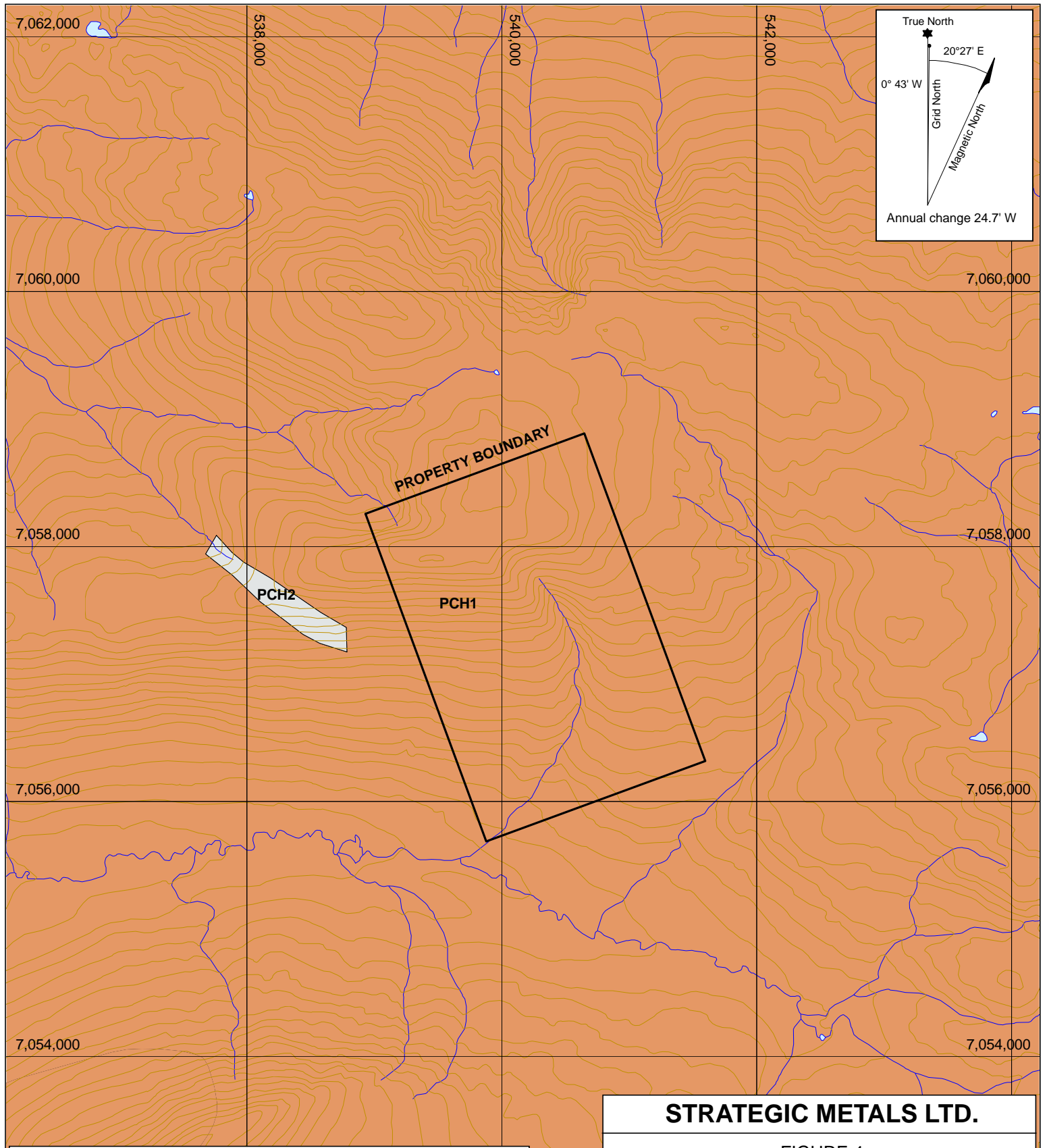
NELS PROPERTY


FILE: P:/2017/NELS


DATE: FEBRUARY 2018

After Colpron, M. and Nelson, J.L., 2011






 PCH1: HYLAND: Thin to thick bedded, brown to pale green shale, fine to coarse grained quartz-rich sandstone, grit, and quartz pebble conglomerate; minor argillaceous limestone; phyllite, quartzofeldspathic and micaceous psammite, gritty psammite and minor marble.

 PCH2: HYLAND: Grey weathering, dark grey to grey white, thin to thick bedded, very fine crystalline limestone, locally sandy; calc silicate and marble; may locally include carbonate members within PCH1.

STRATEGIC METALS LTD.

FIGURE 4
 ARCHER, CATHRO & ASSOCIATES (1981) LIMITED
REGIONAL GEOLOGY
 NELS PROPERTY

UTM ZONE 8, NAD 83, NTS 105M09

0  2,000
meters

FILE: 2017/NELS | DATE: FEBRUARY 2018

Table I– Lithological Units (after YGS, 2017)

Map Suite	Age	Map Unit	Description
Hyland Group	Neoproterozoic	PCH1	(PCH1) Thin to thick-bedded, brown to pale green shale, fine to coarse-grained quartz-rich sandstone, grit and quartz pebble conglomerate; minor argillaceous limestone; phyllite, quartzofeldspathic and micaceous psammite, gritty psammite and minor marble.
		PCH2	(PCH2) Grey weathering, dark grey to grey white, thin to thick-bedded, very fine crystalline limestone, locally sandy, local shale interbeds; calc-silicate and marble; may locally include carbonate members within PCH1.

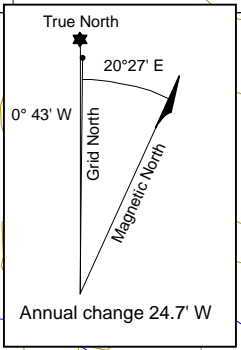
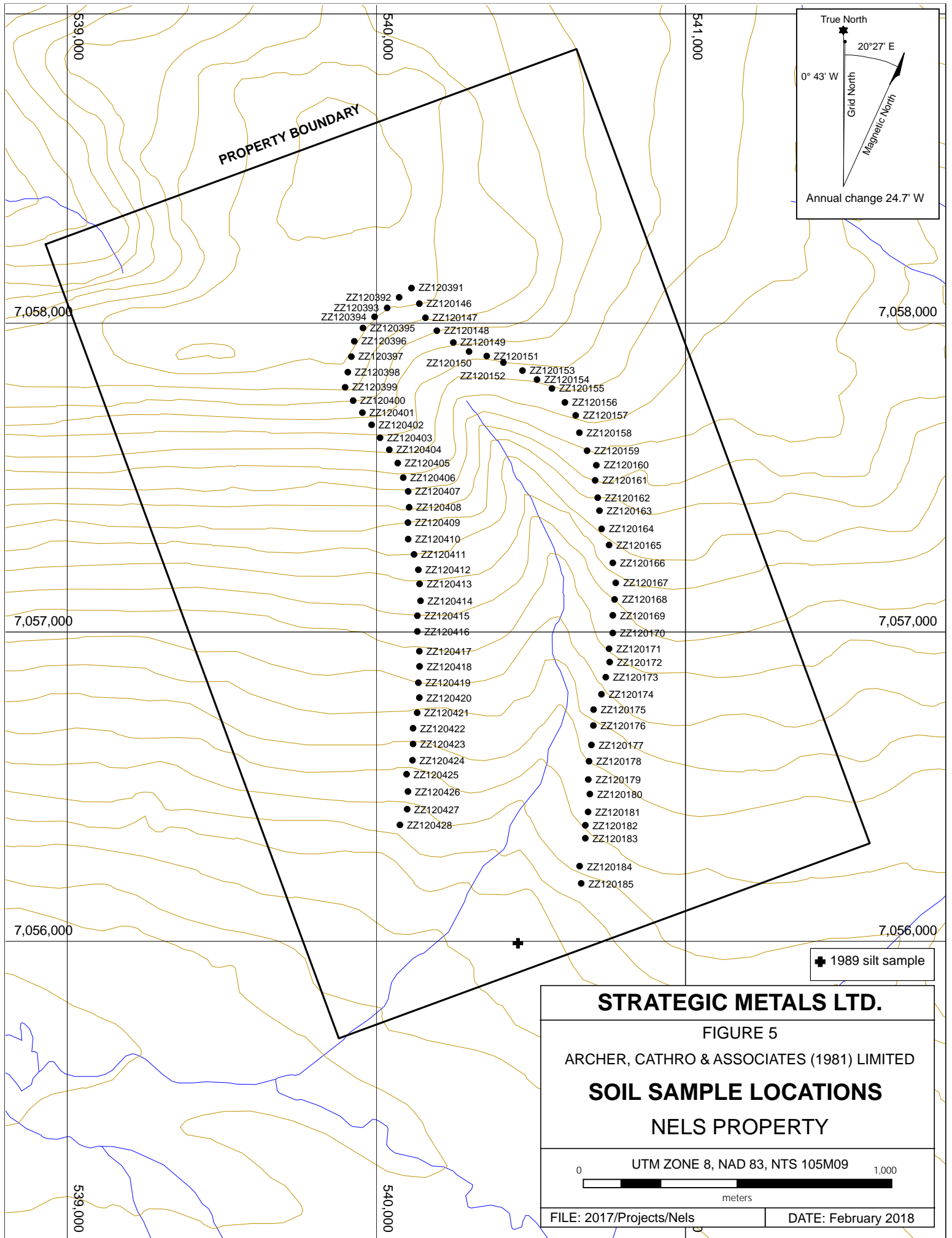
The region is entirely underlain by Hyland Group metasedimentary rocks (PCH1) that are overlain by localized Hyland Group limestone horizons (PCH2). These highly deformed sequences are displaced and deformed by the Robert Service Thrust Fault (RSTF) and the younger underlying Tombstone Thrust Fault (TTF), located 15 km to the north (Roots, 2003). The RSTF underwent at least 150 km of northerly displacement, thrusting Hyland Group rocks to their present level of exposure (Roots, 1998). Both faults were active from Jurassic to Cretaceous as part of a collision-related deformation regime related to large-scale plate convergence (Mair et al., 2006).

No property scale mapping has been done on the Nels property.

SOIL GEOCHEMISTRY

In 2017, Strategic Metals collected 78 soil samples from vegetated hillsides on both sides of the south-flowing creek that returned 294 ppb gold-in-silt (Friske and Hornbrook, 1989). Soil sample locations are shown on Figure 5, while Certificates of Analysis are provided in Appendix III.

The 2017 soil sample locations were recorded using hand-held GPS units. Sample sites are marked by aluminum tags inscribed with the sample numbers and affixed to 0.5 m wooden lath that were driven into the ground. Soil samples were collected from holes dug by hand-held auger. They were placed into individually pre-numbered Kraft paper bags. The soil samples were sent to ALS Minerals in Whitehorse, where they were dried and screened to -180 microns. The fine fractions were then shipped to ALS Minerals in North Vancouver where they were analysed for 51 elements using an aqua regia digestion followed by inductively coupled plasma combined with mass spectroscopy and atomic emission spectroscopy (ME-MS41). An additional 30 g charge was further analysed for gold by fire assay with inductively coupled plasma-atomic emissions spectroscopy finish (Au-ICP21).



- ZZ120391
- ZZ120392
- ZZ120393
- ZZ120394
- ZZ120395
- ZZ120396
- ZZ120397
- ZZ120398
- ZZ120399
- ZZ120400
- ZZ120401
- ZZ120402
- ZZ120403
- ZZ120404
- ZZ120405
- ZZ120406
- ZZ120407
- ZZ120408
- ZZ120409
- ZZ120410
- ZZ120411
- ZZ120412
- ZZ120413
- ZZ120414
- ZZ120415
- ZZ120416
- ZZ120417
- ZZ120418
- ZZ120419
- ZZ120420
- ZZ120421
- ZZ120422
- ZZ120423
- ZZ120424
- ZZ120425
- ZZ120426
- ZZ120427
- ZZ120428
- ZZ120146
- ZZ120147
- ZZ120148
- ZZ120149
- ZZ120150
- ZZ120151
- ZZ120152
- ZZ120153
- ZZ120154
- ZZ120155
- ZZ120156
- ZZ120157
- ZZ120158
- ZZ120159
- ZZ120160
- ZZ120161
- ZZ120162
- ZZ120163
- ZZ120164
- ZZ120165
- ZZ120166
- ZZ120167
- ZZ120168
- ZZ120169
- ZZ120170
- ZZ120171
- ZZ120172
- ZZ120173
- ZZ120174
- ZZ120175
- ZZ120176
- ZZ120177
- ZZ120178
- ZZ120179
- ZZ120180
- ZZ120181
- ZZ120182
- ZZ120183
- ZZ120184
- ZZ120185

⊕ 1989 silt sample

STRATEGIC METALS LTD.

FIGURE 5

ARCHER, CATHRO & ASSOCIATES (1981) LIMITED

SOIL SAMPLE LOCATIONS

NELS PROPERTY

UTM ZONE 8, NAD 83, NTS 105M09

0 1,000 meters

FILE: 2017/Projects/Nels DATE: February 2018

The 2017 soil results were subdued with peak values of 8 ppb gold-in-soil and 81.9 ppm copper-in-soil; however, these results may not be representative of the mineral potential on the property because the sample lines are widely spaced and most of the samples were from glacial till.

DISCUSSION AND CONCLUSIONS

The Nels property lies within the Tombstone Gold Belt, which contains a number of known gold occurrences, including Goldstrike Resources Ltd.'s Plateau property located 50 km to the southeast.

Cursory soil sampling performed on the Nels property in 2017 failed to identify the source of the strongly anomalous gold-in-silt value from 1989; however, the property remains a viable exploration target that warrants follow up work.

Future work on the property should include several silt samples taken at intervals up the anomalous drainage, wherever silt is available, to try and reproduce the historical value. If additional elevated gold values are obtained from the silt samples, a series of contour soil sample lines should be run starting in the northern part of the property on Nelson Ridge and working south towards the location of the anomalous RGS silt sample.

Respectfully submitted,

ARCHER, CATHRO & ASSOCIATES (1981) LIMITED



K. Willms, B.Sc.

REFERENCES

- Abbott, J.G., Gordey, S.P. and Tempelman-Kluit, D.J.
1986 Setting of STrataform, Sediment-hosted Lead-zinc Deposits in Yukon and Northeast British Columbia; In Mineral Deposits of Northern Cordillera, J.A. Morin (ed.), Canadian Institute of Mining and Metallurgy, Special Volume 37, p. 1-18.
- Colpron, M. and Nelson, J. L.
2011 A digital atlas of terranes for the Northern Cordillera; Yukon Geological Survey and BC Geology Survey, BCGS GeoFile 2011-11
http://www.geology.gov.yk.ca/pdf/CanCord_terranes_2011.pdf
- Friske, P.W. and Hornbrook, E.H
1989 National Geochemical Reconnaissance Stream Sediment and Water Geochemical Data, Central Yukon (105M). Geological Survey of Canada, Open File 1962.
- Gordey, S.P. and Makepeace, A.J. (compilers)
2003 Yukon digital geology, version 2.0, Geological Survey of Canada, Open File 1749 and Yukon Geological Survey, Open File 2003-9 (D).
- Jackaman, W.
2012 Regional Stream Sediment Geochemical Data, Mayo Area, Central Yukon (NTS 105M). Yukon Geological Survey, Open File 2012-8.
- Mair, J.L., Hart, C., and Stephens, J.R.
2006 Deformation History of the Northwestern Selwyn Basin, Yukon, Canada: Implications for Orogeny Evolution and Mid-Cretaceous Magmatism; Geological Society of America Bulletin, Marh/April 2006, V. 118, p. 289-303.
- Roots, C.F.
1997 Geology of the Mayo Map Area, Yukon Territory (105M); Exploration and Geological Services Division, Yukon, Indian and Northern Indian and Northern Affairs Canada, Bulletin 7, 82 p.
- Yukon Geological Survey
2017 Yukon Digital Bedrock Geology.
http://www.geology.gov.yu.ca/update_yukon_bedrock_geology_map.html,
accessed: January, 2018.
- 2017 Quaternary Glaciation Map
<http://www.geology.gov.yk.ca/quarternary.html>, accessed February, 2018.

APPENDIX I
STATEMENT OF QUALIFICATIONS

STATEMENT OF QUALIFICATIONS

I, Kelson Willms, geologist, with business addresses in Vancouver, British Columbia and Whitehorse, Yukon Territory and residential address in Vancouver, British Columbia, do hereby certify that:

1. I graduated from the University of British Columbia in 2017 with a B.Sc in Earth and Environmental Sciences.
2. From 2015 to present, I have been actively engaged in mineral exploration in the Yukon Territory and British Columbia.
3. I have not personally participated in the fieldwork reported herein, but have interpreted all data resulting from this work.



K. Willms, B.Sc.

APPENDIX II
STATEMENT OF EXPENDITURES

Statement of Expenditures
Nels 1-24 Mineral Claims
February 5, 2018

Labour

D. Eaton geologist 1 hours April to January at \$120/hr	\$ 126.00
J. Morton geologist 2 hours April to January at \$96/hr	201.60
K. Willms geologist 28 hours April to January at \$62/hr	1,822.80
J. Kitchen field assistant 8 hours April to January at \$55/hr	462.00
Q. Willms field assistant 8 hours April to January at \$51/hr	428.40
J. Itkin office 1.5 hours April to January at \$96/hr	151.20
J. Mariacher office 4 hours April to January at \$90/hr	378.00
L. Corbett expedite 2 hours April to January at \$81/hr	170.10
L. Smith office and expedite 4 hours April to January at \$81/hr	340.20
S. Newman office 8.5 hours April to January at \$68/hr	<u>606.90</u>
	4,687.20

Expenses including management

Field room and board 2.25 mandays at \$195/manday	495.79
Fireweed Helicopters 3.1 hours Bell 206 at \$1,200/hr plus fuel	4,912.96
ALS Chemex	<u>2,332.17</u>
	7,740.92

Total \$12,428.12

APPENDIX III
CERTIFICATES OF ANALYSIS



ALS Canada Ltd.
 2103 Dollarton Hwy
 North Vancouver BC V7H 0A7
 Phone: +1 (604) 984 0221 Fax: +1 (604) 984 0218
 www.alsglobal.com/geochemistry

To: **STRATEGIC METALS LTD.**
C/ O ARCHER, CATHRO & ASSOCIATES (1981)
LIMITED
1016- 510 W HASTINGS ST
VANCOUVER BC V6B 1L8

Page: 1
Total # Pages: 3 (A - D)
Plus Appendix Pages
Finalized Date: 17- SEP- 2017
Account: MTT

CERTIFICATE WH17171138

Project: Nels

This report is for 78 Soil samples submitted to our lab in Whitehorse, YT, Canada on 14- AUG- 2017.

The following have access to data associated with this certificate:

ANDREW CARNE	JOAN MARIACHER	JACK MORTON
--------------	----------------	-------------

SAMPLE PREPARATION	
ALS CODE	DESCRIPTION
WEI- 21	Received Sample Weight
LOG- 22	Sample login - Rcd w/o BarCode
SCR- 41	Screen to - 180um and save both

ANALYTICAL PROCEDURES		
ALS CODE	DESCRIPTION	INSTRUMENT
Au- ICP21	Au 30g FA ICP- AES Finish	ICP- AES
ME- MS41	Ultra Trace Aqua Regia ICP- MS	

To: **STRATEGIC METALS LTD.**
ATTN: JOAN MARIACHER
C/ O ARCHER, CATHRO & ASSOCIATES (1981) LIMITED
1016- 510 W HASTINGS ST
VANCOUVER BC V6B 1L8

This is the Final Report and supersedes any preliminary report with this certificate number. Results apply to samples as submitted. All pages of this report have been checked and approved for release.

***** See Appendix Page for comments regarding this certificate *****

Signature: 
 Colin Ramshaw, Vancouver Laboratory Manager



ALS Canada Ltd.
 2103 Dollarton Hwy
 North Vancouver BC V7H 0A7
 Phone: +1 (604) 984 0221 Fax: +1 (604) 984 0218
 www.alsglobal.com/geochemistry

To: STRATEGIC METALS LTD.
 C/ O ARCHER, CATHRO & ASSOCIATES (1981)
 LIMITED
 1016- 510 W HASTINGS ST
 VANCOUVER BC V6B 1L8

Page: 2 - A
 Total # Pages: 3 (A - D)
 Plus Appendix Pages
 Finalized Date: 17- SEP- 2017
 Account: MTT

Project: Nels

CERTIFICATE OF ANALYSIS WH17171138

Sample Description	Method	WEI- 21	ME- MS41	ME- MS41	ME- MS41	ME- MS41	ME- MS41	ME- MS41	ME- MS41	ME- MS41	ME- MS41	ME- MS41	ME- MS41	ME- MS41	ME- MS41	ME- MS41
	Analyte	Recvd Wt.	Ag	Al	As	Au	B	Ba	Be	Bi	Ca	Cd	Ce	Co	Cr	Cs
Units		kg	ppm	%	ppm	ppm	ppm	ppm	ppm	ppm	%	ppm	ppm	ppm	ppm	ppm
LOR		0.02	0.01	0.01	0.1	0.02	10	10	0.05	0.01	0.01	0.01	0.02	0.1	1	0.05
ZZ120391		0.32	0.43	2.23	5.8	<0.02	<10	290	0.64	0.24	0.47	0.10	56.8	15.2	32	1.13
ZZ120392		0.40	0.08	1.71	5.8	<0.02	<10	130	0.38	0.20	0.14	0.12	44.7	10.2	27	0.98
ZZ120393		0.44	0.04	1.73	7.7	<0.02	<10	80	0.34	0.22	0.12	0.13	40.8	11.7	27	0.90
ZZ120394		0.40	0.12	1.97	13.9	<0.02	<10	350	0.63	0.28	0.23	0.30	58.2	15.5	32	1.27
ZZ120395		0.50	0.07	1.73	14.9	<0.02	<10	180	0.46	0.27	0.09	0.33	47.4	14.7	30	1.05
ZZ120396		0.50	0.09	1.45	11.5	<0.02	<10	110	0.39	0.20	0.13	0.29	36.7	11.3	25	0.81
ZZ120397		0.32	0.10	1.18	12.3	<0.02	<10	220	0.45	0.31	0.09	0.29	34.5	13.5	23	1.26
ZZ120398		0.33	0.11	1.80	13.5	<0.02	<10	190	0.52	0.28	0.07	0.25	33.5	8.4	26	1.17
ZZ120399		0.35	0.07	1.62	12.6	<0.02	<10	120	0.38	0.30	0.07	0.15	37.0	7.5	27	1.09
ZZ120400		0.42	0.15	1.80	18.9	<0.02	<10	110	0.49	0.54	0.08	0.13	117.0	20.3	21	1.68
ZZ120401		0.51	0.08	1.67	5.2	<0.02	<10	80	0.29	0.57	0.04	0.06	62.0	8.0	18	0.70
ZZ120402		0.43	0.11	1.68	9.2	<0.02	<10	90	0.39	0.34	0.06	0.14	55.8	12.2	23	0.82
ZZ120403		0.32	0.19	1.62	10.5	<0.02	<10	210	0.39	0.40	0.22	0.19	88.4	13.9	21	0.92
ZZ120404		0.35	0.12	1.51	9.2	<0.02	<10	180	0.39	0.32	0.08	0.17	61.5	11.3	22	0.72
ZZ120405		0.36	0.06	1.72	10.3	<0.02	<10	160	0.55	0.30	0.06	0.14	53.4	13.7	24	0.87
ZZ120406		0.45	0.13	1.60	10.4	<0.02	<10	150	0.45	0.31	0.05	0.15	42.5	9.1	23	0.93
ZZ120407		0.40	0.14	1.33	8.8	<0.02	<10	110	0.30	0.33	0.05	0.16	49.9	6.9	18	0.78
ZZ120408		0.30	0.17	1.41	8.8	<0.02	<10	120	0.39	0.28	0.06	0.21	41.0	8.8	22	0.92
ZZ120409		0.32	0.18	1.64	9.0	<0.02	<10	110	0.48	0.30	0.04	0.26	40.3	11.5	23	0.98
ZZ120410		0.35	0.12	1.76	7.9	<0.02	<10	130	0.53	0.37	0.10	0.18	84.0	16.2	24	0.96
ZZ120411		0.36	0.16	1.58	10.6	<0.02	<10	120	0.34	0.23	0.11	0.10	22.4	4.2	24	0.93
ZZ120412		0.44	0.36	2.04	11.0	<0.02	<10	130	0.53	0.25	0.12	0.05	46.8	8.5	28	1.23
ZZ120413		0.32	0.22	1.10	9.3	<0.02	<10	170	0.22	0.28	0.13	0.19	35.2	6.2	18	0.48
ZZ120414		0.25	0.47	1.49	5.5	<0.02	<10	240	0.51	0.28	1.19	0.42	38.1	11.1	21	0.80
ZZ120415		0.43	0.22	1.51	8.8	<0.02	<10	90	0.49	0.37	0.53	0.19	60.8	19.0	24	0.69
ZZ120416		0.36	0.20	1.41	7.6	<0.02	<10	90	0.40	0.35	0.83	0.17	61.3	18.1	20	0.61
ZZ120417		0.34	0.23	1.29	10.9	<0.02	<10	90	0.49	0.40	1.07	0.33	43.1	11.3	21	0.78
ZZ120418		0.25	0.08	1.37	14.9	<0.02	<10	120	0.41	0.26	0.94	0.29	20.2	8.1	25	0.83
ZZ120419		0.37	0.30	1.54	12.5	<0.02	<10	120	0.47	0.47	0.89	0.21	65.5	18.2	22	0.85
ZZ120420		0.29	0.08	1.26	10.1	<0.02	<10	90	0.37	0.47	0.38	0.39	48.8	6.7	19	0.74
ZZ120421		0.48	0.04	1.31	4.8	<0.02	<10	110	0.33	0.22	0.30	0.06	38.5	8.7	17	0.55
ZZ120422		0.46	0.17	1.45	8.3	<0.02	<10	150	0.52	0.28	0.98	0.17	40.9	10.7	19	0.77
ZZ120423		0.41	0.11	1.40	6.2	<0.02	<10	180	0.47	0.24	0.49	0.09	42.7	11.4	19	0.63
ZZ120424		0.36	0.14	1.33	6.2	<0.02	<10	170	0.38	0.25	0.73	0.09	37.1	9.4	17	0.56
ZZ120425		0.29	0.13	1.43	6.5	<0.02	<10	180	0.43	0.26	0.89	0.18	34.5	12.9	19	0.76
ZZ120426		0.22	0.19	1.45	6.4	<0.02	<10	190	0.48	0.26	1.16	0.16	44.7	12.1	19	0.71
ZZ120427		0.26	0.19	1.31	6.1	<0.02	<10	190	0.50	0.25	0.99	0.15	40.8	11.4	17	0.63
ZZ120428		0.29	0.24	1.26	6.2	<0.02	<10	170	0.44	0.26	1.27	0.24	39.9	11.5	18	0.62
ZZ120146		0.44	0.14	1.48	9.2	<0.02	<10	200	0.29	0.19	0.17	0.23	54.4	17.0	25	0.73
ZZ120147		0.38	0.06	1.49	6.7	<0.02	<10	110	0.30	0.18	0.11	0.09	36.5	10.8	24	0.70



ALS Canada Ltd.
 2103 Dollarton Hwy
 North Vancouver BC V7H 0A7
 Phone: +1 (604) 984 0221 Fax: +1 (604) 984 0218
 www.alsglobal.com/geochemistry

To: STRATEGIC METALS LTD.
 C/ O ARCHER, CATHRO & ASSOCIATES (1981)
 LIMITED
 1016- 510 W HASTINGS ST
 VANCOUVER BC V6B 1L8

Page: 2 - B
 Total # Pages: 3 (A - D)
 Plus Appendix Pages
 Finalized Date: 17- SEP- 2017
 Account: MTT

Project: Nels

CERTIFICATE OF ANALYSIS WH17171138

Sample Description	Method Analyte Units LOR	ME- MS41	ME- MS41	ME- MS41	ME- MS41	ME- MS41	ME- MS41	ME- MS41	ME- MS41	ME- MS41	ME- MS41	ME- MS41	ME- MS41	ME- MS41	ME- MS41	
		Cu ppm	Fe %	Ga ppm	Ge ppm	Hf ppm	Hg ppm	In ppm	K %	La ppm	Li ppm	Mg %	Mn ppm	Mo ppm	Na %	Nb ppm
		0.2	0.01	0.05	0.05	0.02	0.01	0.005	0.01	0.2	0.1	0.01	5	0.05	0.01	0.05
ZZ120391		74.2	3.56	5.61	0.18	0.04	0.07	0.025	0.07	62.7	25.5	0.67	591	1.17	<0.01	0.49
ZZ120392		50.5	2.87	4.72	0.13	<0.02	0.03	0.019	0.05	23.5	20.6	0.59	313	0.90	<0.01	0.65
ZZ120393		50.3	3.36	4.95	0.13	<0.02	0.02	0.020	0.06	19.7	19.5	0.62	412	1.03	<0.01	0.69
ZZ120394		55.1	4.19	5.53	0.14	<0.02	0.05	0.031	0.09	32.6	16.7	0.48	877	1.71	<0.01	0.24
ZZ120395		44.8	4.09	4.98	0.13	<0.02	0.05	0.028	0.07	19.5	20.6	0.52	784	1.65	<0.01	0.46
ZZ120396		32.7	3.18	4.13	0.13	<0.02	0.04	0.020	0.06	18.0	17.3	0.47	502	1.38	<0.01	0.45
ZZ120397		24.4	3.06	5.37	0.12	<0.02	0.05	0.026	0.09	16.3	6.3	0.20	1660	2.19	<0.01	0.35
ZZ120398		27.4	3.44	5.47	0.11	<0.02	0.06	0.029	0.06	16.6	17.2	0.39	401	1.58	<0.01	0.48
ZZ120399		19.5	3.10	5.72	0.12	<0.02	0.04	0.022	0.05	17.9	15.2	0.40	300	1.63	<0.01	0.52
ZZ120400		57.6	4.19	4.97	0.15	0.04	0.03	0.020	0.07	45.8	28.7	0.59	331	1.78	<0.01	0.33
ZZ120401		44.8	3.91	4.63	0.13	0.02	0.02	0.014	0.06	39.3	23.2	0.63	198	1.04	<0.01	0.21
ZZ120402		50.3	3.75	4.67	0.14	0.02	0.04	0.018	0.07	30.2	22.9	0.53	370	1.19	<0.01	0.48
ZZ120403		49.5	3.96	4.83	0.18	<0.02	0.04	0.018	0.08	50.2	22.0	0.52	363	1.28	<0.01	0.52
ZZ120404		34.5	3.51	4.52	0.14	0.02	0.03	0.018	0.07	32.5	24.1	0.52	362	1.10	<0.01	0.42
ZZ120405		36.2	3.62	4.53	0.13	0.04	0.06	0.020	0.08	26.0	28.3	0.51	355	1.15	<0.01	0.76
ZZ120406		24.8	3.48	5.03	0.12	<0.02	0.04	0.020	0.09	21.2	22.0	0.41	340	1.35	<0.01	0.74
ZZ120407		25.6	3.35	5.02	0.13	<0.02	0.04	0.014	0.08	24.7	14.8	0.35	255	1.21	<0.01	0.41
ZZ120408		33.2	3.28	4.77	0.13	<0.02	0.03	0.019	0.09	20.3	15.6	0.39	500	1.14	<0.01	0.33
ZZ120409		31.8	3.46	5.17	0.12	0.02	0.04	0.020	0.09	19.7	19.1	0.43	672	1.17	<0.01	0.35
ZZ120410		38.4	4.05	4.94	0.13	<0.02	0.02	0.027	0.11	28.0	24.7	0.63	779	1.04	<0.01	0.46
ZZ120411		9.2	2.83	5.21	0.11	0.02	0.04	0.020	0.05	11.6	14.2	0.29	125	1.52	<0.01	1.22
ZZ120412		30.2	3.27	5.06	0.13	0.04	0.06	0.025	0.07	23.9	20.1	0.48	227	1.20	<0.01	1.17
ZZ120413		13.7	3.20	5.03	0.12	<0.02	0.02	0.016	0.12	18.2	10.6	0.24	354	1.52	<0.01	0.75
ZZ120414		36.8	2.47	5.03	0.14	<0.02	0.07	0.024	0.08	28.2	21.2	0.29	1320	1.04	<0.01	0.73
ZZ120415		51.5	4.12	4.10	0.14	0.05	0.05	0.025	0.07	35.4	28.9	0.75	862	1.19	<0.01	0.48
ZZ120416		45.8	4.06	3.66	0.14	0.05	0.06	0.021	0.07	31.4	24.9	0.64	740	1.20	<0.01	0.35
ZZ120417		33.9	2.95	3.87	0.13	0.05	0.05	0.022	0.06	27.5	27.5	0.43	316	1.11	<0.01	0.64
ZZ120418		13.7	3.24	5.09	0.11	<0.02	0.03	0.026	0.06	10.7	29.4	0.37	576	1.65	<0.01	1.10
ZZ120419		55.3	3.19	5.06	0.12	0.07	0.05	0.027	0.06	36.6	25.1	0.48	340	1.34	0.01	0.58
ZZ120420		23.4	3.40	4.82	0.11	0.05	0.02	0.026	0.07	34.6	21.1	0.29	144	1.75	0.01	0.79
ZZ120421		17.0	2.61	4.01	0.10	0.04	0.01	0.015	0.06	19.0	20.3	0.44	304	0.76	0.01	0.42
ZZ120422		47.6	2.94	4.34	0.11	0.06	0.06	0.018	0.09	25.8	20.7	0.44	417	0.92	0.01	0.43
ZZ120423		32.6	2.89	4.20	0.11	0.07	0.04	0.018	0.08	23.4	19.5	0.45	447	0.85	0.01	0.43
ZZ120424		31.6	2.75	4.04	0.09	0.07	0.04	0.018	0.07	21.4	19.5	0.41	333	0.88	0.01	0.37
ZZ120425		32.1	2.75	4.40	0.10	0.05	0.04	0.021	0.08	23.3	21.3	0.39	406	0.84	0.01	0.47
ZZ120426		37.4	2.79	4.49	0.12	0.07	0.06	0.019	0.08	35.0	22.1	0.40	390	0.87	0.01	0.46
ZZ120427		36.4	2.51	4.20	0.12	0.05	0.05	0.019	0.07	33.1	21.4	0.34	409	0.82	0.01	0.51
ZZ120428		41.9	2.54	4.05	0.12	0.08	0.06	0.019	0.07	43.0	21.8	0.39	367	0.82	0.01	0.48
ZZ120146		51.0	3.07	4.94	0.12	0.03	0.05	0.020	0.06	27.5	21.7	0.56	488	0.90	0.01	0.68
ZZ120147		33.7	3.09	4.83	0.09	<0.02	0.04	0.016	0.06	19.0	18.6	0.56	437	0.75	0.01	0.62



ALS Canada Ltd.
 2103 Dollarton Hwy
 North Vancouver BC V7H 0A7
 Phone: +1 (604) 984 0221 Fax: +1 (604) 984 0218
 www.alsglobal.com/geochemistry

To: STRATEGIC METALS LTD.
 C/ O ARCHER, CATHRO & ASSOCIATES (1981)
 LIMITED
 1016- 510 W HASTINGS ST
 VANCOUVER BC V6B 1L8

Page: 2 - C
 Total # Pages: 3 (A - D)
 Plus Appendix Pages
 Finalized Date: 17- SEP- 2017
 Account: MTT

Project: Nels

CERTIFICATE OF ANALYSIS WH17171138

Sample Description	Method Analyte Units LOR	ME- MS41	ME- MS41	ME- MS41	ME- MS41	ME- MS41	ME- MS41	ME- MS41	ME- MS41	ME- MS41	ME- MS41	ME- MS41	ME- MS41	ME- MS41	ME- MS41	
		Ni	P	Pb	Rb	Re	S	Sb	Sc	Se	Sn	Sr	Ta	Te	Th	Ti
		ppm	ppm	ppm	ppm	ppm	%	ppm	ppm	ppm	ppm	ppm	ppm	ppm	ppm	ppm
		0.2	10	0.2	0.1	0.001	0.01	0.05	0.1	0.2	0.2	0.2	0.01	0.01	0.2	0.005
ZZ120391		32.9	1810	15.9	13.9	<0.001	0.14	0.39	2.6	1.2	0.3	32.6	<0.01	0.03	1.5	0.014
ZZ120392		29.5	590	13.2	9.1	<0.001	0.02	0.43	2.5	0.5	0.3	11.3	<0.01	0.03	2.1	0.034
ZZ120393		29.9	680	12.5	9.8	<0.001	0.02	0.51	2.1	0.4	0.3	10.0	<0.01	0.04	1.8	0.040
ZZ120394		30.3	1750	29.8	14.0	<0.001	0.11	0.86	0.9	1.3	0.4	21.5	<0.01	0.06	0.4	0.013
ZZ120395		32.0	870	22.1	10.4	<0.001	0.04	0.90	2.0	0.8	0.4	10.4	<0.01	0.05	1.1	0.026
ZZ120396		25.7	900	14.6	8.2	<0.001	0.03	0.86	1.9	0.8	0.3	12.1	<0.01	0.03	1.0	0.030
ZZ120397		16.3	1340	18.0	20.1	<0.001	0.11	0.96	0.6	0.6	0.6	12.3	<0.01	0.05	<0.2	0.019
ZZ120398		23.4	910	19.1	9.5	<0.001	0.06	0.88	1.3	0.6	0.5	10.6	<0.01	0.05	0.5	0.019
ZZ120399		19.1	720	16.6	10.0	<0.001	0.04	0.75	1.2	0.6	0.6	10.4	<0.01	0.04	0.6	0.025
ZZ120400		50.1	590	43.7	10.2	<0.001	0.04	0.48	1.5	0.8	0.3	17.9	<0.01	0.05	8.1	0.012
ZZ120401		15.8	490	35.8	7.0	<0.001	0.05	0.28	1.0	0.5	0.2	19.7	<0.01	0.04	6.8	0.010
ZZ120402		25.1	550	23.7	8.8	<0.001	0.04	0.45	1.2	0.6	0.3	11.6	<0.01	0.03	2.2	0.021
ZZ120403		34.1	670	25.2	10.9	<0.001	0.06	0.45	1.5	1.0	0.3	29.1	<0.01	0.05	3.2	0.020
ZZ120404		27.6	530	22.6	9.2	<0.001	0.04	0.47	1.4	0.6	0.3	18.0	<0.01	0.03	2.8	0.015
ZZ120405		32.6	310	21.8	9.9	<0.001	0.02	0.61	2.2	0.6	0.3	10.7	<0.01	0.05	7.8	0.017
ZZ120406		23.1	520	19.6	14.9	<0.001	0.03	0.51	1.7	0.4	0.4	10.4	<0.01	0.03	4.0	0.017
ZZ120407		19.3	660	18.4	11.6	<0.001	0.03	0.39	0.8	0.3	0.3	10.5	<0.01	0.03	0.9	0.017
ZZ120408		22.0	720	17.2	14.1	<0.001	0.05	0.45	0.6	0.4	0.4	8.8	<0.01	0.03	0.3	0.019
ZZ120409		21.6	840	20.8	13.4	<0.001	0.07	0.44	0.7	0.4	0.4	7.1	<0.01	0.04	0.4	0.015
ZZ120410		32.7	820	32.6	14.3	<0.001	0.05	0.43	1.1	0.6	0.3	14.5	<0.01	0.06	1.6	0.016
ZZ120411		11.0	350	13.1	7.9	<0.001	0.02	0.53	1.8	0.7	0.5	12.9	<0.01	0.04	2.1	0.028
ZZ120412		21.3	320	19.6	11.2	<0.001	0.01	0.54	2.7	0.8	0.5	13.5	<0.01	0.03	7.4	0.030
ZZ120413		13.6	440	17.5	12.0	<0.001	0.03	0.73	1.2	0.2	0.5	13.8	<0.01	0.04	1.0	0.030
ZZ120414		21.1	750	18.7	12.0	<0.001	0.06	0.39	2.0	0.8	0.5	186.5	<0.01	0.03	1.1	0.019
ZZ120415		43.4	650	17.9	8.4	<0.001	0.03	0.55	3.3	1.1	0.3	77.7	<0.01	0.09	6.8	0.021
ZZ120416		33.5	700	21.3	8.4	<0.001	0.05	0.43	2.3	1.2	0.2	113.0	<0.01	0.08	5.2	0.012
ZZ120417		30.5	590	28.4	9.4	0.001	0.06	0.49	1.8	1.2	0.3	141.5	<0.01	0.04	2.5	0.022
ZZ120418		17.8	520	15.8	8.2	<0.001	0.04	0.66	2.0	0.6	0.5	125.5	<0.01	0.05	1.1	0.029
ZZ120419		37.7	570	25.3	8.5	0.001	0.05	0.57	1.9	1.4	0.3	126.5	<0.01	0.05	4.5	0.015
ZZ120420		18.9	440	28.8	8.7	0.001	0.03	0.44	1.8	0.7	0.3	67.2	<0.01	0.05	6.9	0.019
ZZ120421		20.3	190	14.1	7.3	<0.001	0.01	0.25	1.5	0.4	0.2	43.5	<0.01	0.01	4.6	0.008
ZZ120422		34.5	520	17.8	9.8	0.001	0.05	0.48	2.0	1.2	0.2	101.5	<0.01	0.04	3.1	0.009
ZZ120423		28.1	470	16.7	8.5	<0.001	0.03	0.35	2.1	0.5	0.2	58.1	<0.01	0.03	4.1	0.010
ZZ120424		27.5	550	15.8	8.6	<0.001	0.05	0.36	1.7	0.7	0.2	79.5	<0.01	0.03	3.1	0.008
ZZ120425		29.7	520	17.0	10.9	<0.001	0.04	0.32	1.9	0.7	0.2	89.2	<0.01	0.03	2.7	0.009
ZZ120426		33.1	590	16.8	9.7	<0.001	0.06	0.39	1.9	0.9	0.2	107.5	<0.01	0.04	2.8	0.008
ZZ120427		35.6	510	16.0	8.3	<0.001	0.05	0.39	2.0	0.9	0.2	84.1	<0.01	0.02	3.0	0.009
ZZ120428		41.9	580	16.4	8.8	0.001	0.06	0.47	1.9	1.1	0.2	98.4	<0.01	0.02	2.5	0.011
ZZ120146		31.5	630	15.8	7.7	<0.001	0.01	0.50	3.8	0.7	0.3	12.9	<0.01	0.03	5.8	0.038
ZZ120147		24.5	560	13.6	8.6	<0.001	0.02	0.40	2.2	0.3	0.3	8.4	<0.01	0.03	1.9	0.026



ALS Canada Ltd.
 2103 Dollarton Hwy
 North Vancouver BC V7H 0A7
 Phone: +1 (604) 984 0221 Fax: +1 (604) 984 0218
 www.alsglobal.com/geochemistry

To: STRATEGIC METALS LTD.
 C/ O ARCHER, CATHRO & ASSOCIATES (1981)
 LIMITED
 1016- 510 W HASTINGS ST
 VANCOUVER BC V6B 1L8

Page: 2 - D
 Total # Pages: 3 (A - D)
 Plus Appendix Pages
 Finalized Date: 17- SEP- 2017
 Account: MTT

Project: Nels

CERTIFICATE OF ANALYSIS WH17171138

Sample Description	Method Analyte Units LOR	ME- MS41	ME- MS41	ME- MS41	ME- MS41	ME- MS41	ME- MS41	Au- ICP21	
		Tl ppm	U ppm	V ppm	W ppm	Y ppm	Zn ppm	Zr ppm	Au ppm
		0.02	0.05	1	0.05	0.05	2	0.5	0.001
ZZ120391		0.16	1.85	40	0.12	20.5	74	1.1	0.002
ZZ120392		0.12	0.96	37	0.14	8.19	64	<0.5	0.003
ZZ120393		0.10	0.86	40	0.15	6.29	72	<0.5	0.002
ZZ120394		0.17	1.69	48	0.16	14.90	91	<0.5	<0.001
ZZ120395		0.13	0.93	47	0.18	7.00	109	<0.5	0.003
ZZ120396		0.10	0.91	40	0.18	6.70	91	<0.5	<0.001
ZZ120397		0.17	0.91	54	0.20	5.80	77	<0.5	<0.001
ZZ120398		0.17	1.00	49	0.19	6.14	81	<0.5	0.002
ZZ120399		0.14	1.07	51	0.27	3.95	63	<0.5	0.001
ZZ120400		0.10	3.41	27	0.10	14.30	82	1.3	0.001
ZZ120401		0.07	2.29	19	0.05	4.17	77	0.8	<0.001
ZZ120402		0.08	2.40	31	0.11	6.77	72	<0.5	0.001
ZZ120403		0.09	2.96	29	0.11	19.80	77	0.6	0.003
ZZ120404		0.08	1.65	29	0.12	8.43	74	0.5	<0.001
ZZ120405		0.11	1.17	31	0.15	6.02	74	1.5	<0.001
ZZ120406		0.12	0.94	36	0.19	4.00	66	0.5	<0.001
ZZ120407		0.08	0.88	31	0.15	3.63	54	<0.5	<0.001
ZZ120408		0.09	1.18	36	0.14	6.23	69	<0.5	<0.001
ZZ120409		0.12	1.08	37	0.14	4.60	80	<0.5	0.008
ZZ120410		0.11	1.23	29	0.12	8.55	87	<0.5	0.001
ZZ120411		0.14	0.59	54	0.30	2.40	42	0.5	<0.001
ZZ120412		0.15	1.26	46	0.22	5.78	60	1.8	0.004
ZZ120413		0.09	0.61	50	0.20	3.41	68	<0.5	0.001
ZZ120414		0.09	7.23	41	0.16	11.70	66	<0.5	0.002
ZZ120415		0.07	4.65	28	0.11	17.85	86	1.5	0.003
ZZ120416		0.07	6.91	22	0.09	14.50	77	1.6	0.001
ZZ120417		0.07	6.40	33	0.17	11.60	73	1.8	<0.001
ZZ120418		0.09	3.29	58	0.30	3.57	72	0.5	0.001
ZZ120419		0.08	12.60	28	0.13	14.15	65	2.8	0.001
ZZ120420		0.07	3.69	33	0.22	6.85	75	2.3	<0.001
ZZ120421		0.06	1.19	20	0.08	3.05	49	1.5	<0.001
ZZ120422		0.07	7.13	22	0.07	11.10	57	2.4	0.003
ZZ120423		0.07	3.50	22	0.11	7.89	58	2.2	0.001
ZZ120424		0.07	3.72	20	0.09	7.21	54	2.2	<0.001
ZZ120425		0.07	5.14	24	0.08	7.42	64	1.8	0.002
ZZ120426		0.08	5.69	23	0.10	10.60	60	2.3	<0.001
ZZ120427		0.07	4.54	24	0.11	9.34	54	2.0	0.001
ZZ120428		0.07	5.29	22	0.10	12.05	63	2.8	0.003
ZZ120146		0.09	1.03	35	0.11	12.25	72	1.2	0.002
ZZ120147		0.09	0.67	32	0.09	6.28	58	<0.5	<0.001



ALS Canada Ltd.
 2103 Dollarton Hwy
 North Vancouver BC V7H 0A7
 Phone: +1 (604) 984 0221 Fax: +1 (604) 984 0218
 www.alsglobal.com/geochemistry

To: STRATEGIC METALS LTD.
 C/ O ARCHER, CATHRO & ASSOCIATES (1981)
 LIMITED
 1016- 510 W HASTINGS ST
 VANCOUVER BC V6B 1L8

Page: 3 - A
 Total # Pages: 3 (A - D)
 Plus Appendix Pages
 Finalized Date: 17- SEP- 2017
 Account: MTT

Project: Nels

CERTIFICATE OF ANALYSIS WH17171138

Sample Description	Method Analyte Units LOR	WEI- 21	ME- MS41	ME- MS41	ME- MS41	ME- MS41	ME- MS41	ME- MS41	ME- MS41	ME- MS41	ME- MS41	ME- MS41	ME- MS41	ME- MS41	ME- MS41	
		Recvd Wt. kg	Ag ppm	Al %	As ppm	Au ppm	B ppm	Ba ppm	Be ppm	Bi ppm	Ca %	Cd ppm	Ce ppm	Co ppm	Cr ppm	Cs ppm
		0.02	0.01	0.01	0.1	0.02	10	10	0.05	0.01	0.01	0.01	0.02	0.1	1	0.05
ZZ120148		0.42	0.13	1.31	9.3	<0.02	<10	280	0.37	0.19	0.17	0.21	58.1	14.6	23	0.78
ZZ120149		0.35	0.07	1.41	8.4	<0.02	<10	210	0.40	0.19	0.20	0.24	46.7	11.5	25	0.85
ZZ120150		0.38	0.09	1.57	8.2	<0.02	<10	240	0.40	0.19	0.23	0.17	77.1	15.9	27	0.90
ZZ120151		0.27	0.20	1.74	9.2	<0.02	<10	240	0.55	0.26	0.30	0.18	62.5	11.1	28	1.07
ZZ120152		0.36	0.09	1.63	8.8	<0.02	<10	270	0.43	0.26	0.17	0.15	52.3	14.9	25	0.96
ZZ120153		0.44	0.13	1.57	8.8	<0.02	<10	180	0.48	0.27	0.13	0.14	51.1	15.1	24	0.81
ZZ120154		0.33	0.16	1.41	8.7	<0.02	<10	180	0.50	0.27	0.10	0.17	42.2	9.6	21	0.85
ZZ120155		0.38	0.13	1.46	8.0	<0.02	<10	190	0.47	0.27	0.06	0.15	54.8	12.4	20	0.75
ZZ120156		0.34	0.18	1.58	12.2	<0.02	<10	100	0.37	0.26	0.08	0.13	28.3	10.6	29	0.93
ZZ120157		0.36	0.07	1.23	12.2	<0.02	<10	60	0.32	0.30	0.10	0.18	32.5	10.6	22	0.75
ZZ120158		0.38	0.10	1.50	12.0	<0.02	<10	110	0.45	0.26	0.07	0.22	34.9	11.0	23	1.10
ZZ120159		0.37	0.08	1.51	9.6	<0.02	<10	110	0.51	0.26	0.14	0.15	37.2	14.0	22	0.84
ZZ120160		0.31	0.12	1.30	12.6	<0.02	<10	80	0.36	0.24	0.08	0.17	33.1	7.5	22	0.82
ZZ120161		0.25	0.16	1.45	13.5	<0.02	<10	100	0.37	0.28	0.05	0.26	29.7	9.7	24	1.11
ZZ120162		0.32	0.10	2.01	7.1	<0.02	<10	50	0.35	0.29	0.06	0.23	55.7	16.4	29	0.87
ZZ120163		0.27	0.09	1.24	8.0	<0.02	<10	70	0.37	0.36	0.03	0.17	50.7	9.7	17	1.37
ZZ120164		0.42	0.16	2.10	3.9	<0.02	<10	60	0.41	0.26	0.75	0.08	62.1	18.5	31	0.65
ZZ120165		0.43	0.16	1.98	4.3	<0.02	<10	50	0.31	0.23	0.60	0.09	56.2	16.7	32	0.58
ZZ120166		0.32	0.11	1.84	13.8	<0.02	<10	220	0.69	0.29	0.18	0.08	66.2	13.0	27	1.08
ZZ120167		0.27	0.19	1.57	10.9	<0.02	<10	120	0.24	0.29	0.05	0.14	28.4	7.2	24	0.99
ZZ120168		0.36	0.18	1.63	11.0	<0.02	<10	210	0.37	0.27	0.07	0.12	24.9	6.7	25	1.40
ZZ120169		0.26	0.11	1.25	14.2	<0.02	<10	100	0.22	0.30	0.05	0.17	41.0	5.8	21	1.42
ZZ120170		0.34	0.14	0.81	8.1	<0.02	<10	60	0.13	0.24	0.03	0.06	41.9	2.7	11	0.95
ZZ120171		0.38	0.30	1.62	11.4	<0.02	<10	110	0.31	0.26	0.03	0.10	38.2	6.8	22	1.02
ZZ120172		0.32	0.17	1.24	13.2	<0.02	<10	80	0.28	0.30	0.06	0.12	43.3	6.3	19	0.93
ZZ120173		0.40	0.08	1.71	10.7	<0.02	<10	110	0.33	0.24	0.03	0.10	35.8	6.4	24	1.00
ZZ120174		0.27	0.12	1.27	10.9	<0.02	<10	150	0.26	0.23	0.13	0.11	24.0	5.5	22	0.77
ZZ120175		0.34	0.07	1.14	8.8	<0.02	<10	130	0.33	0.22	0.05	0.11	53.0	4.4	14	0.88
ZZ120176		0.24	0.28	2.13	15.9	<0.02	<10	150	0.56	0.27	0.08	0.22	27.8	8.5	31	1.11
ZZ120177		0.41	0.12	1.79	13.4	<0.02	<10	140	0.57	0.43	0.05	0.09	69.0	13.1	21	1.70
ZZ120178		0.39	0.14	1.25	6.3	<0.02	<10	60	0.17	0.49	0.02	0.08	108.0	2.9	13	0.64
ZZ120179		0.31	0.18	1.38	11.1	<0.02	<10	60	0.21	0.72	0.03	0.13	95.8	4.8	17	0.60
ZZ120180		0.31	0.11	1.27	8.0	<0.02	<10	110	0.25	0.30	0.05	0.06	47.5	6.2	16	0.61
ZZ120181		0.28	0.06	2.04	13.5	<0.02	<10	190	0.53	0.24	0.05	0.14	25.1	7.4	28	0.99
ZZ120182		0.32	0.12	1.62	14.8	<0.02	<10	150	0.33	0.25	0.05	0.14	24.3	6.5	26	1.08
ZZ120183		0.37	0.22	1.71	13.2	<0.02	<10	160	0.38	0.23	0.06	0.17	23.9	7.2	27	0.88
ZZ120184		0.37	0.13	1.96	15.1	<0.02	<10	170	0.41	0.26	0.05	0.11	33.2	8.3	27	1.01
ZZ120185		0.38	0.08	1.59	7.8	<0.02	<10	280	0.41	0.34	0.09	0.06	61.0	8.0	22	1.08



ALS Canada Ltd.
 2103 Dollarton Hwy
 North Vancouver BC V7H 0A7
 Phone: +1 (604) 984 0221 Fax: +1 (604) 984 0218
 www.alsglobal.com/geochemistry

To: STRATEGIC METALS LTD.
 C/ O ARCHER, CATHRO & ASSOCIATES (1981)
 LIMITED
 1016- 510 W HASTINGS ST
 VANCOUVER BC V6B 1L8

Page: 3 - B
 Total # Pages: 3 (A - D)
 Plus Appendix Pages
 Finalized Date: 17- SEP- 2017
 Account: MTT

Project: Nels

CERTIFICATE OF ANALYSIS WH17171138

Sample Description	Method Analyte Units LOR	ME- MS41	ME- MS41	ME- MS41	ME- MS41	ME- MS41	ME- MS41	ME- MS41	ME- MS41	ME- MS41	ME- MS41	ME- MS41	ME- MS41	ME- MS41	ME- MS41	ME- MS41
		Cu ppm	Fe %	Ga ppm	Ge ppm	Hf ppm	Hg ppm	In ppm	K %	La ppm	Li ppm	Mg %	Mn ppm	Mo ppm	Na %	Nb ppm
		0.2	0.01	0.05	0.05	0.02	0.01	0.005	0.01	0.2	0.1	0.01	5	0.05	0.01	0.05
ZZ120148		62.9	2.95	4.32	0.10	0.02	0.03	0.020	0.07	23.7	17.6	0.48	452	1.01	0.01	0.61
ZZ120149		42.4	2.98	4.81	0.10	<0.02	0.03	0.020	0.08	19.7	19.6	0.56	422	0.89	0.01	0.48
ZZ120150		66.3	3.34	5.39	0.11	<0.02	0.05	0.021	0.08	28.0	22.9	0.65	496	0.79	0.01	0.44
ZZ120151		68.9	3.30	5.98	0.25	0.02	0.03	0.026	0.09	98.1	24.2	0.53	536	0.94	0.01	0.46
ZZ120152		55.9	3.50	5.52	0.11	<0.02	0.03	0.023	0.08	27.5	24.2	0.54	594	1.02	0.01	0.43
ZZ120153		57.9	3.46	5.08	0.11	0.02	0.03	0.020	0.09	27.9	26.0	0.54	511	0.92	0.01	0.48
ZZ120154		39.3	2.94	4.85	0.10	<0.02	0.02	0.019	0.07	24.8	20.3	0.37	342	1.12	0.01	0.46
ZZ120155		36.8	3.05	4.63	0.12	0.02	0.04	0.017	0.07	32.6	26.2	0.46	383	0.88	0.01	0.40
ZZ120156		32.6	3.65	6.86	0.08	<0.02	0.04	0.024	0.09	14.0	21.5	0.52	464	1.51	0.01	1.18
ZZ120157		31.8	3.76	4.47	0.08	<0.02	0.04	0.021	0.07	16.0	22.9	0.42	421	1.14	0.01	0.87
ZZ120158		27.5	3.04	4.94	0.09	<0.02	0.12	0.023	0.06	18.1	17.2	0.35	496	1.50	0.01	0.59
ZZ120159		37.6	3.33	4.80	0.09	0.02	0.04	0.020	0.09	19.7	26.5	0.46	505	0.98	0.01	0.61
ZZ120160		23.0	3.34	6.08	0.09	0.02	0.02	0.024	0.07	18.1	22.4	0.36	275	1.37	0.01	1.55
ZZ120161		18.4	2.88	6.29	0.09	<0.02	0.04	0.022	0.07	15.4	13.4	0.24	603	1.82	0.01	0.70
ZZ120162		46.3	4.49	6.17	0.11	0.02	0.04	0.021	0.10	25.7	28.4	0.72	497	0.79	0.01	0.69
ZZ120163		27.6	3.23	4.91	0.11	<0.02	0.02	0.025	0.09	25.1	10.8	0.24	603	1.45	0.01	0.37
ZZ120164		81.9	4.04	6.46	0.12	0.05	0.03	0.018	0.12	34.7	36.5	0.92	574	0.58	0.01	0.43
ZZ120165		65.6	3.92	6.12	0.12	0.05	0.03	0.017	0.12	34.9	36.5	0.91	434	0.61	0.01	0.36
ZZ120166		24.3	3.29	5.21	0.10	0.02	0.02	0.035	0.06	25.2	24.0	0.51	599	1.26	0.01	0.89
ZZ120167		14.7	3.48	7.54	0.09	<0.02	0.02	0.018	0.06	14.2	15.3	0.36	319	1.39	0.01	1.74
ZZ120168		10.3	2.78	7.11	0.08	0.02	0.03	0.025	0.05	13.0	16.4	0.28	337	1.65	0.01	1.75
ZZ120169		14.7	2.84	5.71	0.10	<0.02	0.02	0.018	0.06	21.5	20.3	0.35	218	1.94	0.01	0.97
ZZ120170		9.0	1.55	5.59	0.10	<0.02	0.01	0.011	0.04	21.6	5.2	0.11	123	1.19	0.01	0.76
ZZ120171		17.9	3.05	5.78	0.09	0.05	0.03	0.022	0.05	19.0	18.9	0.31	230	1.41	0.01	1.04
ZZ120172		14.9	3.51	5.95	0.05	<0.02	0.03	0.024	0.07	21.6	13.2	0.27	261	1.96	<0.01	1.38
ZZ120173		14.4	3.46	4.71	<0.05	0.05	0.02	0.028	0.06	17.7	24.1	0.40	202	1.18	<0.01	0.80
ZZ120174		8.6	2.81	5.15	<0.05	<0.02	0.02	0.023	0.07	12.4	17.1	0.33	330	1.74	<0.01	1.14
ZZ120175		7.6	2.51	4.48	0.05	<0.02	0.01	0.018	0.06	26.6	10.5	0.17	156	1.17	<0.01	0.82
ZZ120176		20.7	3.72	5.86	<0.05	0.02	0.03	0.037	0.08	14.3	26.6	0.39	447	1.85	<0.01	1.25
ZZ120177		31.7	5.81	4.51	0.06	0.07	0.03	0.038	0.06	34.6	25.6	0.20	226	2.13	<0.01	0.64
ZZ120178		14.3	4.49	6.67	0.10	0.02	0.02	0.018	0.04	53.9	13.7	0.32	102	1.79	<0.01	0.20
ZZ120179		24.2	5.48	7.01	0.08	0.03	0.02	0.022	0.05	48.5	14.6	0.31	140	1.52	<0.01	0.36
ZZ120180		13.3	2.82	5.62	0.05	0.02	0.01	0.018	0.04	25.0	14.0	0.24	159	1.37	<0.01	0.91
ZZ120181		11.1	3.29	5.57	<0.05	0.05	0.02	0.032	0.04	13.0	20.4	0.37	212	1.75	<0.01	1.34
ZZ120182		10.1	3.60	6.01	<0.05	0.04	0.02	0.029	0.05	13.2	20.9	0.32	252	2.05	<0.01	1.60
ZZ120183		11.9	3.11	5.08	<0.05	0.04	0.04	0.027	0.06	12.5	19.6	0.37	239	1.67	<0.01	1.18
ZZ120184		17.2	3.95	5.64	<0.05	0.06	0.04	0.033	0.05	16.9	26.8	0.38	264	1.76	<0.01	1.18
ZZ120185		20.7	3.04	5.18	0.06	0.03	0.03	0.021	0.04	32.1	28.3	0.38	191	1.30	<0.01	0.81



ALS Canada Ltd.
 2103 Dollarton Hwy
 North Vancouver BC V7H 0A7
 Phone: +1 (604) 984 0221 Fax: +1 (604) 984 0218
 www.alsglobal.com/geochemistry

To: STRATEGIC METALS LTD.
 C/ O ARCHER, CATHRO & ASSOCIATES (1981)
 LIMITED
 1016- 510 W HASTINGS ST
 VANCOUVER BC V6B 1L8

Page: 3 - C
 Total # Pages: 3 (A - D)
 Plus Appendix Pages
 Finalized Date: 17- SEP- 2017
 Account: MTT

Project: Nels

CERTIFICATE OF ANALYSIS WH17171138

Sample Description	Method Analyte Units LOR	ME- MS41	ME- MS41	ME- MS41	ME- MS41	ME- MS41	ME- MS41	ME- MS41	ME- MS41	ME- MS41	ME- MS41	ME- MS41	ME- MS41	ME- MS41	ME- MS41	
		Ni	P	Pb	Rb	Re	S	Sb	Sc	Se	Sn	Sr	Ta	Te	Th	Ti
		ppm	ppm	ppm	ppm	ppm	%	ppm	ppm	ppm	ppm	ppm	ppm	ppm	ppm	ppm
		0.2	10	0.2	0.1	0.001	0.01	0.05	0.1	0.2	0.2	0.2	0.01	0.01	0.2	0.005
ZZ120148		37.7	380	16.0	7.2	<0.001	0.02	0.65	2.9	0.6	0.2	14.9	<0.01	0.03	3.0	0.031
ZZ120149		30.0	650	13.1	9.3	<0.001	0.02	0.54	1.8	0.5	0.3	15.7	<0.01	0.04	0.9	0.026
ZZ120150		37.7	540	17.1	9.8	<0.001	0.02	0.43	2.2	0.5	0.2	17.9	<0.01	0.02	1.5	0.025
ZZ120151		30.9	1050	18.7	11.9	<0.001	0.08	0.50	1.8	1.2	0.3	23.7	<0.01	0.03	0.8	0.015
ZZ120152		30.9	590	18.1	12.1	<0.001	0.03	0.44	1.5	0.6	0.3	14.7	<0.01	0.03	0.7	0.020
ZZ120153		32.1	520	19.3	9.2	<0.001	0.02	0.47	1.8	0.5	0.3	12.7	<0.01	0.03	2.2	0.017
ZZ120154		24.8	540	18.0	11.2	<0.001	0.04	0.50	0.9	0.4	0.3	11.5	<0.01	0.03	0.5	0.010
ZZ120155		28.8	290	19.7	8.8	<0.001	0.01	0.41	1.8	0.5	0.2	9.4	<0.01	0.05	3.8	0.011
ZZ120156		26.4	380	14.4	12.4	<0.001	0.03	0.69	2.1	0.5	0.5	8.5	<0.01	0.04	0.8	0.061
ZZ120157		22.8	400	22.4	7.1	<0.001	0.02	0.58	1.8	0.3	0.3	7.7	<0.01	0.03	2.8	0.023
ZZ120158		21.8	580	18.0	10.8	<0.001	0.03	0.74	1.0	0.8	0.4	8.1	<0.01	0.04	0.4	0.019
ZZ120159		27.8	510	22.2	8.9	<0.001	0.03	0.48	1.8	0.5	0.3	12.1	<0.01	0.04	2.8	0.012
ZZ120160		19.0	340	15.0	12.0	<0.001	0.02	0.62	2.1	0.5	0.5	8.6	<0.01	0.03	2.7	0.056
ZZ120161		14.7	570	19.1	16.8	<0.001	0.03	0.75	0.8	0.5	0.6	7.4	<0.01	0.04	0.2	0.027
ZZ120162		33.0	500	21.8	11.2	0.001	0.02	0.30	2.2	0.5	0.2	6.2	<0.01	0.03	5.9	0.018
ZZ120163		20.2	710	24.2	17.3	<0.001	0.05	2.29	0.7	0.5	0.4	6.0	<0.01	0.04	0.3	0.012
ZZ120164		41.9	470	17.0	10.7	0.001	0.05	0.18	2.9	0.9	0.2	53.1	<0.01	0.03	5.9	0.014
ZZ120165		42.0	470	16.7	11.6	0.002	0.05	0.16	2.8	0.9	<0.2	41.6	<0.01	0.03	6.3	0.011
ZZ120166		42.1	390	18.6	10.5	<0.001	0.01	0.63	3.3	0.9	0.4	16.0	<0.01	0.05	3.7	0.021
ZZ120167		16.2	390	13.4	12.9	<0.001	0.01	0.41	2.1	0.3	0.7	6.0	<0.01	0.03	2.7	0.050
ZZ120168		11.3	320	13.8	15.1	<0.001	0.01	0.41	2.5	0.4	0.8	8.8	<0.01	0.04	3.5	0.036
ZZ120169		17.3	620	16.3	14.1	0.001	0.01	0.52	1.8	0.5	0.5	11.5	<0.01	0.03	2.9	0.024
ZZ120170		6.3	310	8.9	9.4	<0.001	<0.01	0.30	1.2	0.3	0.5	5.7	<0.01	0.02	2.9	0.020
ZZ120171		16.0	230	17.4	14.2	<0.001	0.01	0.50	2.2	0.4	0.5	5.1	<0.01	0.02	5.7	0.028
ZZ120172		13.8	470	15.2	18.3	<0.001	0.02	0.61	1.6	0.3	0.6	7.9	<0.01	0.05	3.7	0.037
ZZ120173		17.3	220	12.9	10.8	<0.001	0.01	0.53	2.1	0.5	0.4	4.4	<0.01	0.03	5.1	0.018
ZZ120174		12.2	220	11.5	10.4	<0.001	0.01	0.48	1.9	0.2	0.6	14.3	<0.01	0.03	2.8	0.029
ZZ120175		9.8	200	12.9	15.5	<0.001	0.01	1.00	1.6	0.4	0.5	6.3	<0.01	0.02	5.2	0.017
ZZ120176		24.3	340	16.2	12.7	<0.001	0.02	0.84	2.7	0.5	0.7	10.2	<0.01	0.04	4.0	0.027
ZZ120177		31.8	400	20.2	11.7	<0.001	0.02	1.66	2.5	0.7	0.5	19.6	<0.01	0.04	11.4	0.006
ZZ120178		7.6	540	18.1	8.9	<0.001	0.02	0.40	0.8	0.6	0.2	4.7	<0.01	0.05	8.9	0.005
ZZ120179		12.6	600	27.4	7.3	<0.001	0.03	0.61	1.2	0.6	0.3	12.6	<0.01	0.04	11.0	0.007
ZZ120180		12.4	290	15.7	7.4	<0.001	0.02	0.45	1.5	0.2	0.6	7.1	<0.01	0.02	6.1	0.022
ZZ120181		17.2	260	14.0	8.7	<0.001	0.01	0.69	2.6	0.5	0.7	7.3	0.01	0.03	4.2	0.032
ZZ120182		15.0	350	14.2	11.6	<0.001	0.02	0.76	2.3	0.5	0.7	6.7	<0.01	0.03	3.3	0.040
ZZ120183		14.6	310	13.6	14.4	<0.001	0.02	0.61	2.3	0.5	0.6	7.3	<0.01	0.03	3.8	0.030
ZZ120184		18.6	380	16.2	9.5	<0.001	0.02	0.75	2.2	0.7	0.5	6.7	<0.01	0.04	5.6	0.025
ZZ120185		21.8	180	18.7	9.7	<0.001	0.02	0.46	2.0	0.4	0.5	10.6	<0.01	0.02	6.3	0.019



ALS Canada Ltd.
 2103 Dollarton Hwy
 North Vancouver BC V7H 0A7
 Phone: +1 (604) 984 0221 Fax: +1 (604) 984 0218
 www.alsglobal.com/geochemistry

To: STRATEGIC METALS LTD.
 C/ O ARCHER, CATHRO & ASSOCIATES (1981)
 LIMITED
 1016- 510 W HASTINGS ST
 VANCOUVER BC V6B 1L8

Page: 3 - D
 Total # Pages: 3 (A - D)
 Plus Appendix Pages
 Finalized Date: 17- SEP- 2017
 Account: MTT

Project: Nels

CERTIFICATE OF ANALYSIS WH17171138

Sample Description	Method Analyte Units LOR	ME- MS41	ME- MS41	ME- MS41	ME- MS41	ME- MS41	ME- MS41	Au- ICP21	
		Tl	U	V	W	Y	Zn	Zr	Au
		ppm	ppm	ppm	ppm	ppm	ppm	ppm	ppm
		0.02	0.05	1	0.05	0.05	2	0.5	0.001
ZZ120148		0.08	0.85	35	0.14	10.55	71	0.7	0.002
ZZ120149		0.08	0.81	36	0.22	6.67	72	<0.5	0.006
ZZ120150		0.07	0.94	36	0.29	9.19	75	<0.5	0.001
ZZ120151		0.11	1.63	39	0.16	30.6	82	<0.5	<0.001
ZZ120152		0.09	1.04	34	0.12	11.05	77	<0.5	0.001
ZZ120153		0.08	0.98	30	0.12	7.49	72	0.5	0.001
ZZ120154		0.11	1.15	29	0.17	7.20	60	<0.5	<0.001
ZZ120155		0.09	1.10	23	0.18	9.72	63	0.7	0.001
ZZ120156		0.13	0.69	55	0.17	4.15	69	<0.5	<0.001
ZZ120157		0.06	0.70	28	0.24	3.86	65	0.5	<0.001
ZZ120158		0.14	1.10	39	0.18	5.58	65	<0.5	<0.001
ZZ120159		0.08	0.97	27	0.10	5.36	72	0.7	0.002
ZZ120160		0.10	0.58	48	0.20	5.17	63	0.7	<0.001
ZZ120161		0.13	0.80	54	0.23	4.34	71	<0.5	0.001
ZZ120162		0.09	0.68	33	0.06	5.71	63	0.5	0.001
ZZ120163		0.14	0.86	32	0.12	4.54	65	<0.5	0.002
ZZ120164		0.09	5.95	30	<0.05	11.75	63	1.5	0.001
ZZ120165		0.08	6.07	30	<0.05	14.45	71	1.3	0.002
ZZ120166		0.13	0.87	44	0.24	12.30	64	0.5	0.001
ZZ120167		0.12	0.44	59	0.19	2.87	51	<0.5	<0.001
ZZ120168		0.16	0.65	65	0.24	2.58	53	1.0	<0.001
ZZ120169		0.12	0.64	44	0.19	2.66	66	<0.5	<0.001
ZZ120170		0.11	0.47	36	0.11	2.14	30	<0.5	<0.001
ZZ120171		0.13	0.57	46	0.15	3.20	49	2.2	<0.001
ZZ120172		0.13	0.52	54	0.28	2.17	58	0.5	<0.001
ZZ120173		0.12	0.45	36	0.13	2.41	51	2.8	<0.001
ZZ120174		0.12	0.40	53	0.22	1.86	63	0.7	<0.001
ZZ120175		0.12	0.50	43	0.18	3.20	41	0.7	<0.001
ZZ120176		0.15	0.65	65	0.28	3.01	83	0.8	<0.001
ZZ120177		0.13	1.27	38	0.13	5.39	101	3.9	<0.001
ZZ120178		0.08	0.65	27	0.05	3.03	55	1.0	<0.001
ZZ120179		0.08	0.96	31	0.07	3.58	58	2.1	<0.001
ZZ120180		0.10	0.59	48	0.14	2.92	41	1.4	<0.001
ZZ120181		0.13	0.63	63	0.28	2.53	61	2.1	<0.001
ZZ120182		0.13	0.45	71	0.32	2.10	62	1.6	<0.001
ZZ120183		0.12	0.53	59	0.26	2.09	75	1.6	<0.001
ZZ120184		0.12	0.55	59	0.27	2.24	71	2.5	<0.001
ZZ120185		0.12	0.93	45	0.17	4.42	58	1.8	<0.001



ALS Canada Ltd.
2103 Dollarton Hwy
North Vancouver BC V7H 0A7
Phone: +1 (604) 984 0221 Fax: +1 (604) 984 0218
www.alsglobal.com/geochemistry

To: STRATEGIC METALS LTD.
C/ O ARCHER, CATHRO & ASSOCIATES (1981)
LIMITED
1016- 510 W HASTINGS ST
VANCOUVER BC V6B 1L8

Page: Appendix 1
Total # Appendix Pages: 1
Finalized Date: 17- SEP- 2017
Account: MTT

Project: Nels

CERTIFICATE OF ANALYSIS WH17171138

CERTIFICATE COMMENTS

ANALYTICAL COMMENTS

Applies to Method: Gold determinations by this method are semi- quantitative due to the small sample weight used (0.5g).
ME- MS41

LABORATORY ADDRESSES

Applies to Method: Processed at ALS Whitehorse located at 78 Mt. Sima Rd, Whitehorse, YT, Canada.
LOG- 22 SCR- 41 WEI- 21

Applies to Method: Processed at ALS Vancouver located at 2103 Dollarton Hwy, North Vancouver, BC, Canada.
Au- ICP21 ME- MS41