

ASSESSMENT REPORT ON THE 2017 GEOCHEMICAL SURVEY OF THE NET CLAIMS

DAWSON MINING DISTRICT – NTS 115N/07

Latitude 63° 27.55160' N, Longitude 140°50.43000' W

UTM NAD 83 ZONE 7: 50800E, 7038000N

NET CLAIMS 1-139 GRANT NUMBERS YF53011 - YF53149

NET CLAIMS 140-147 GRANT NUMBERS YF05880 - YF05887

WORK CONDUCTED BETWEEN JULY 14 AND 21, 2017

REPORT BY DANIÈLE HÉON, P. GEO.

WHITEHORSE, OCTOBER 29, 2018

TABLE OF CONTENTS

SUMMARY.....	1
LOCATION AND ACCESS	1
CLAIM DATA.....	2
REGIONAL DATA	2
Geology.....	2
Regional Geochemistry.....	4
Regional Geophysics.....	4
MINERALIZATION AND PREVIOUS WORK.....	5
2017 SOIL SURVEY	5
Description of work	5
Methodology	5
2017 Results	6
CONCLUSIONS AND RECOMMENDATIONS.....	7
STATEMENT OF QUALIFICATIONS	8
REFERENCES	9

LIST OF FIGURES

Figure 1: General Location Map	1
Figure 2: Regional Geology, RGS Au (ppb), and Minfile	3
Figure 3: Regional First Derivative Mag.....	4

LIST OF APPENDICES

Appendix A – Claim Map	10
Appendix B – Claim Data	11
Appendix C – Sample Location Maps.....	12
Appendix D – Sample Location Data.....	13
Appendix E – Geochem Maps.....	14
Appendix F – Minfile Descriptions.....	15
Appendix G – Assay Certificates	16

SUMMARY

The NET property consists of a total of 147 quartz claims, located on NTS map sheet 115N/07 and registered in the Dawson Mining District. A total of 27.5 person-days was spent on this project. Room and board, mobilization, and demobilization costs were shared with other projects. The crew mobilized to Dawson on July 14, 2018, and demobilized on July 21, 2018. A soil geochemical survey was conducted on July 15, 16 and 17, 2017. A total of 289 soil samples were analyzed for gold and multi-element ICP.

The property is located in the North Ladue River area at the western edge of north-central Yukon. Regional mapping shows of the property to be underlain by quartz-muscovite schist of the Permian Klondike Schist of Yukon Tanana Terrane (YTT) and its contact at the eastern end with the Permian Sulphur Creek orthogneiss, and its western contact with a large rhyolitic body. Claims were staked on March 4, 5, and 6 and on May 25, 2017; the subsequent soil sampling program was the first work program conducted by Coureur des Bois on the property.

The author was not involved in the fieldwork. This report documents and interprets the results of the 2017 sampling, based on information supplied by Coureur des Bois Ltée Ltd.

LOCATION AND ACCESS

The NET property is located in the North Ladue River – White River area, at the western extent of central north Yukon, approximately 95 km southwest of Dawson City, 120 km north of Beaver Creek, and approximately 8 km east of the Yukon/Alaska border, on NTS map sheet 115N/07 (FIGURE 1), with a few claims overlapping map sheet 115N/10.

The centre of the property lies on the North Ladue River, approximately 50 km upstream from its confluence with the White River at Latitude 63° 27.55160' N, Longitude 140°50.43000' W or UTM NAD 83 Zone 7 coordinates 50800E, 7038000N.

The property was accessed by helicopter chartered from Dawson City.

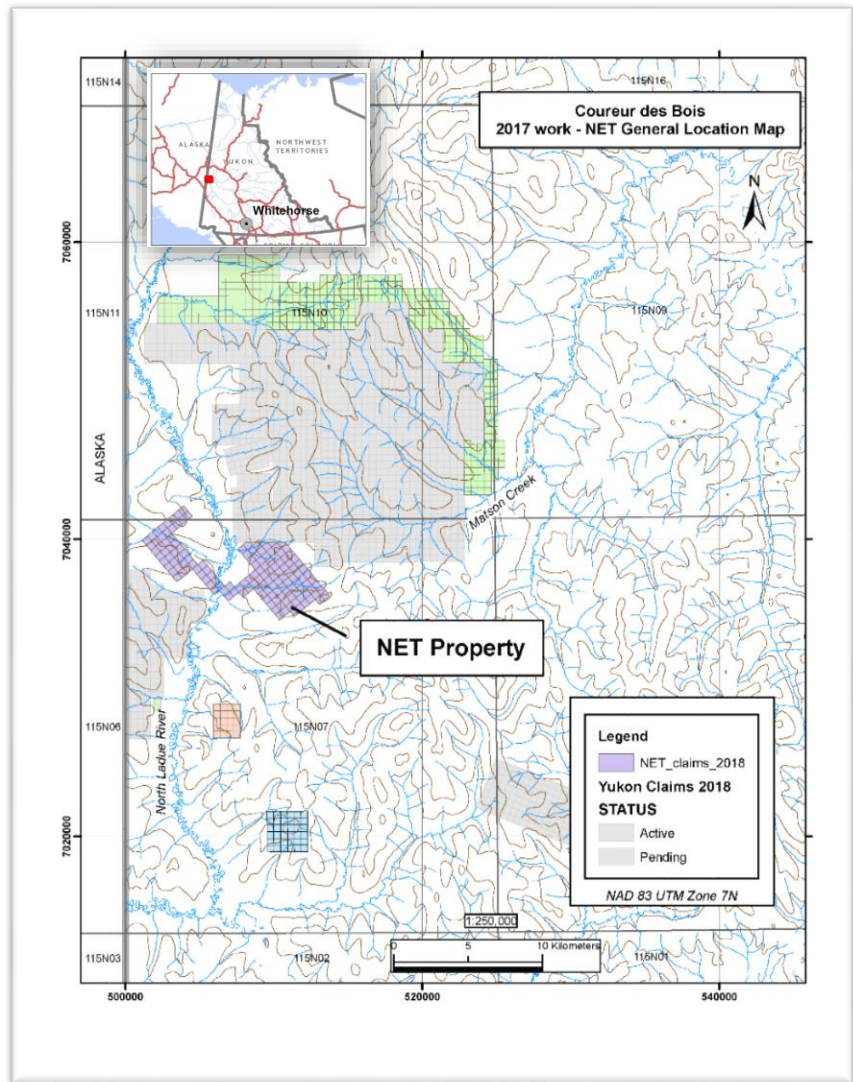


FIGURE 1: GENERAL LOCATION MAP

CLAIM DATA

The NET property consists of 147 quartz claims registered in the Dawson Mining District. Claims were staked on March 4, 5, and 6 as well as on May 25, 2017; they are held by Coureur des Bois Ltée Ltd. The summary information is listed below in

TABLE 1; the detailed claim data is in Appendix B. Pending acceptance of this filing, claims be renewed till March 21, 2021; May 29, 2021; or March 21, 2022.

TABLE 1: Summary Claim Data

YF53011 - YF53149	Net 1 - 139
YF05880 - YF05887	Net 140 - 147

REGIONAL DATA

GEOLOGY

Since this area of central Yukon has not been glaciated, the weathering profile and oxidation level is deeper than in glaciated areas. Metal response in soils may be muted due to prolonged weathering and resulting dilution.

The bedrock geology in the property area is part of the Yukon-Tanana terrane (YTT), a belt of metamorphosed sedimentary, volcanic, and plutonic rocks which document a complex magmatic and structural history. Rocks of YTT are interpreted to have started off as a Paleozoic (Devono-Mississippian) magmatic arc built on the margin of the Laurentian craton as a response to subduction of the oceanic lithosphere under the craton. Subsequent rifting created the Slide Mountain Ocean between YTT and Laurentia and lasted until mid-Permian time. In late Permian time, the polarity of the subduction reversed, and the Slide Mountain Ocean began to subduct under YTT, creating a new (Permian) continental arc package. The metavolcanic and metasedimentary rocks of the Klondike Schist are part of this Permian arc. In latest Permian time, arc polarity reversed and YTT collided with and overrode the Laurentian margin. Continued convergence led to several other episodes of subduction and their complex magmatic response.

The digital regional geology map published by the Yukon Geological Survey (Figure 2A) shows the claims to be underlain by Permian Klondike Schist, subunit PK₁, which consists of quartz-muscovite ± chlorite schist; it is generally interpreted as a metavolcanic arc package.

At the eastern end of the claim block, the Permian Klondike Schist is in contact with the Permian Sulphur Creek Orthogneiss, a foliated intrusive body of granodiorite to quartz monzonite composition. The map pattern suggests a flat contact.

At the western end of the claim block, the Klondike Schist is in contact with Tertiary (Paleocene-Eocene) felsic volcanic or subvolcanic rhyolite dykes, flows and their volcanoclastic equivalents, unit ITR₂. The Canadian portion of this body measures 7 x 5 km on the regional geology map and most of it is covered by Goldstrike Resources HS claims. Elsewhere, this unit forms other kilometre-sized bodies, but it can also occur as very small bodies.

No new geological information was collected during Coureur des Bois's program.

TABLE 2: TABLE OF FORMATIONS

Age	Name on YGS Map	Rock type
Lower Tertiary	Ross Volcanic Suite (ITR ₂)	Rhyolite flows, tuff, ash-flow tuff and breccia
Permian	Sulphur Creek Orthogneiss (PgS)	Granodiorite, quartz monzonite
Carboniferous to Permian	Klondike Schist (PK ₁)	Quartz-muscovite-chlorite schist
Devonian	Snowcap Assemblage (PdS ₁)	Quartzite, psammite, pelite, and marble; minor greenstone and amphibolite

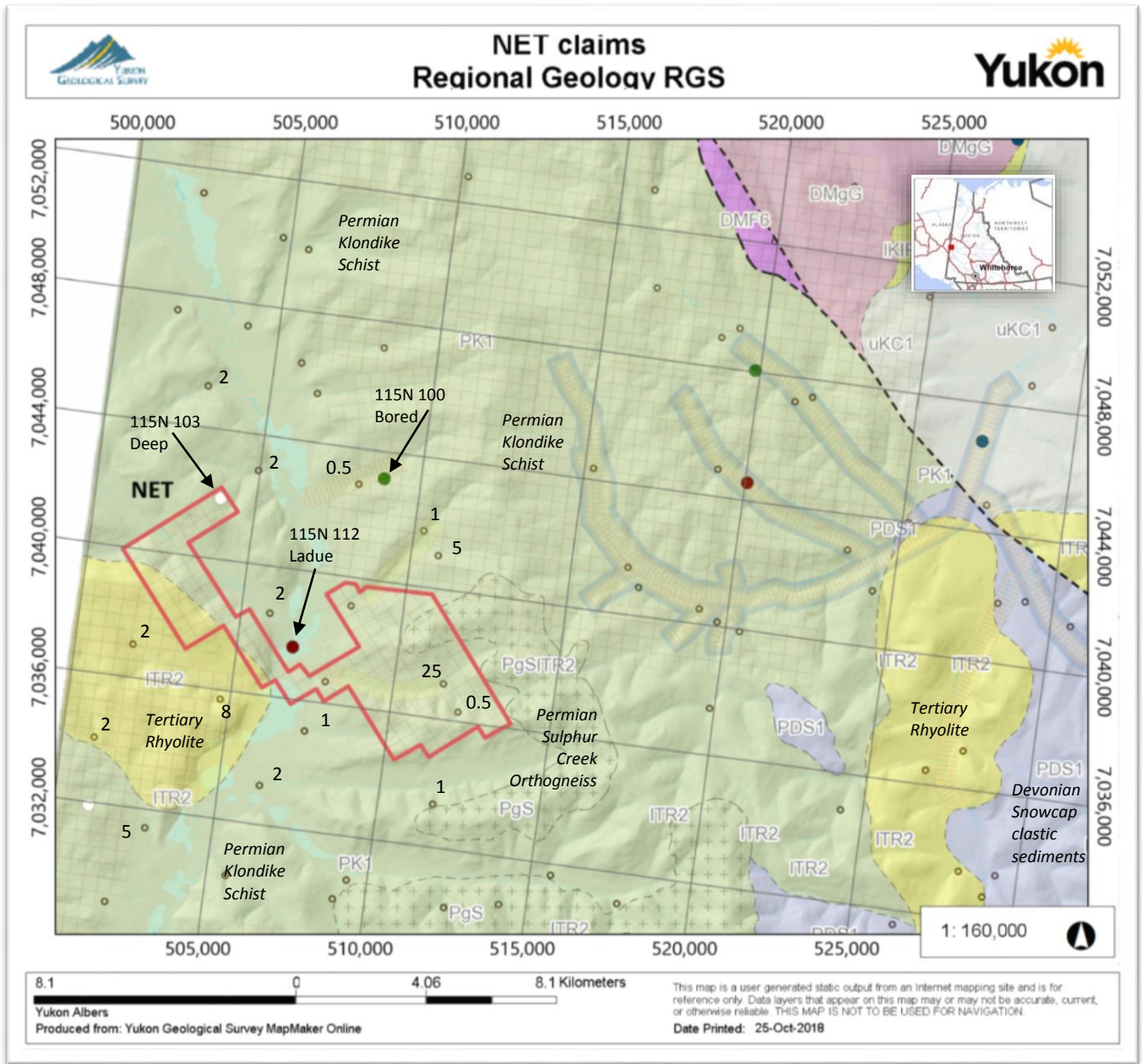


FIGURE 2: REGIONAL GEOLOGY, RGS AU (PPB), AND MINFILE

REGIONAL GEOCHEMISTRY

The RGS data for the area is dated from 1998, when a limited suite of elements was analyzed. About nine RGS sample sites can be interpreted to sample creeks draining the claim block. The RGS results for gold are shown in Figure 2. The metal response in these samples is relatively flat for all the elements analyzed except for a highly anomalous value of 25 ppb in the eastern portion of the claim block, and an elevated sample in the western block at 8 ppb Au.

REGIONAL GEOPHYSICS

Magnetic data, available from the YGS website and shown below in **Error! Reference source not found.** shows the first derivative magnetic survey, with the outline of the NET claim block shown in white.

The magnetic signature for the claim area appears homogeneous. The claims overlie a broad west-northwest trending band of relatively high mag signature. Mag values drop sharply to the west, at the presume contact with the Tertiary rhyolite, and more gradually to the northeast. This either suggests that the claims are underlain by the Klondike Schist only, or that the Sulphur Creek Orthogneiss does not offer a strong magnetic contrast with the Klondike Schist.

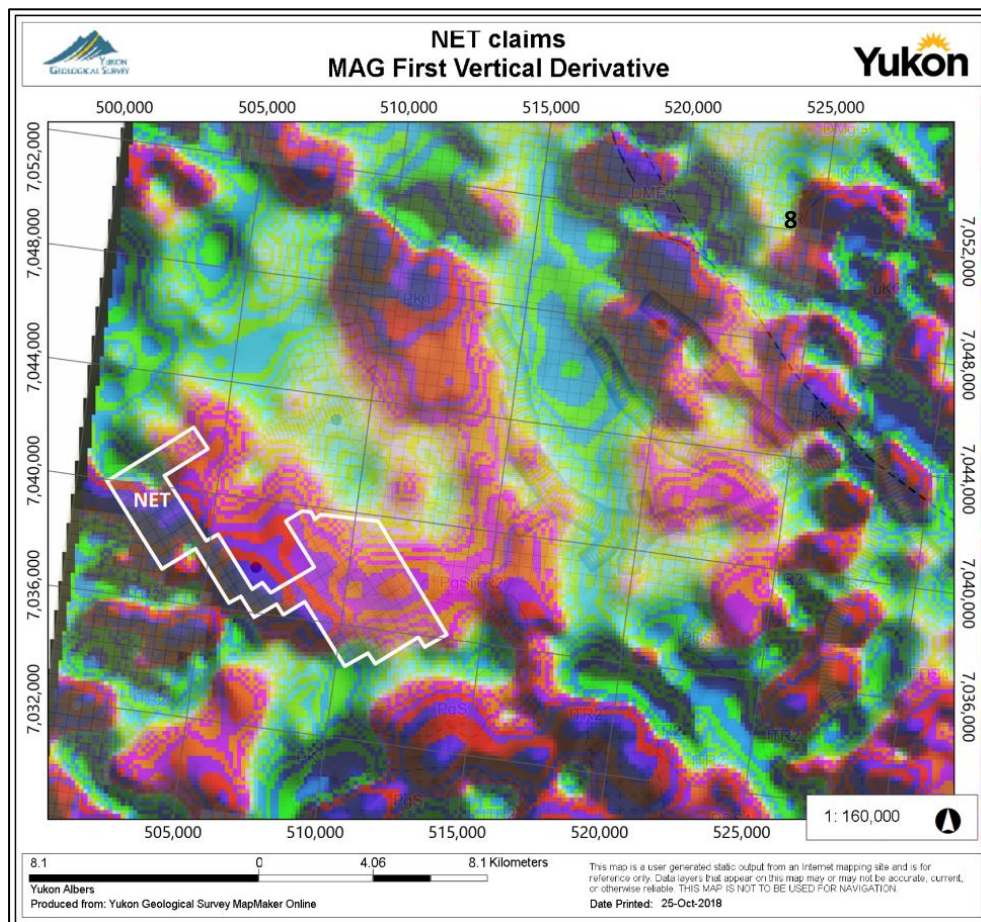


FIGURE 3: REGIONAL FIRST DERIVATIVE MAG

MINERALIZATION AND PREVIOUS WORK

No prospecting has been done on the property to date and so no mineralization has yet been identified on the property by Coureur des Bois. The Klondike Schist is prospective for orogenic gold as well as VMS-type mineralization. Intrusion-related or epithermal mineralization could be found in or near the rhyolitic bodies.

A small claim block (6 x 6 claims) straddling the North Ladue River was explored with mapping and soil sampling to test a magnetic anomaly. The Ladue Minfile occurrence (115N 026) described this occurrence as follows:

“Minor molybdenite and chalcopyrite were found near the contact between Tertiary rhyolite and Paleozoic? metasedimentary rocks and are associated with a small, circular 100 gamma aeromagnetic anomaly. Soil sampling outlined two low order copper-zinc anomalies.”

The assessment report notes the presence of quartz monzonite and associated alteration with some gossanous zones. Soil sampling lines were 400 feet apart (120 m) and were sampled at 200' intervals (60 m) (Occidental Minerals, 1971, assessment report #061119).

The DEEP Minfile occurrence (105N 103), located at the northern most extent of the claimblock, marks the work done in 1979 by Ocean Home Exploration Company Ltd, an Inco Ltd & Kennco Explorations joint venture, which conducted mapping and geochem sampling later in the year. No results are available through Minfile.

The NET property area appears to be under-explored and its mineral potential remains to be determined.

2017 SOIL SURVEY

DESCRIPTION OF WORK

In 2017, a total of 27.5 person-days of fieldwork were conducted on the NET property. The crew mobilized to Dawson on July 14, 2018, and demobilized on July 21, 2018. A soil geochemical survey was conducted on July 15, 16, and 17, 2017. A total of 289 soil samples were analyzed for gold and multi-element ICP.

The 2017 sample location map is located in Appendix C and the sample location data is found in Appendix D. The results are displayed in geochemical maps found in Appendix E.

METHODOLOGY

The 2017 soil survey was the first systematic exploration work done on these claims. The western portion of the claims was sampled by a few lines, some isolated and some paired with a parallel line 250 m away. Soil samples were taken every 140 m. Sampling of the eastern portion of the claims was more clustered, with lines approximately 250 m apart and sampled at 125 m spacing. One portion of one line was sampled at every 65 metres.

Sample sites were predetermined and stored in the sampler's GPS unit. The samplers navigated to the planned waypoints using their GPS, and sampled the B or C horizon at the sample site using a mattock or soil auger. The soil sample was put in a Kraft bag which was labelled with the waypoint number.

Samples were bagged, brought to Whitehorse and shipped directly to ALS Global's sample preparation facility in Whitehorse.

Samples were prepped according to prep code 41, where the samples were dried at <60°C/140F, sieved to -180 micron (80 mesh) and both fractions retained. The samples were then assayed using the Au-ICP21 package, a 30 g fire assay with AES finish, and the ME-MS41L for the multi-element analyses.

2017 RESULTS

The non-glaciated nature of the terrain may cause a subdued metal response in soils due to their prolonged weathering and oxidation. The material sampled may have been leached from its original metal content and therefore exhibit a weaker metal signature than if it had been collected in glaciated areas.

Soil geochemical maps for Au (ppb), As, Bi, Cu, Mn, Pb, and Zn (all in ppm) are shown in Appendix E. The assay certificates are provided in Appendix G.

The geochemical maps display the range of values for selected elements. In order to best represent the distribution of ranges of values for each element, thresholds were determined by comparing all the samples collected in this area in 2017 (total 1057 samples). The sample database therefore includes samples collected on nearby properties (ICE, RIVER, and TOP) as these properties cover similar geology as that found at the NET.

Results from this 2017 soil survey show that metal response in this survey is generally low; yet a few patterns emerge. The following observations can be made:

- Five samples assayed between 10 and 18 ppb Au, corresponding to the highest threshold in the 2017 database (total of 1057 samples, with the highest gold value at 18 ppb Au).
- This property also hosts the highest arsenic and silver value in the 2017 database (NET86 at 311 ppm As and NET106 at 7.21 ppm Ag).

WEST GRID

- One isolated sample at 10 ppb Au, lines up with the contact between the Klondike Schist and the Tertiary Rhyolite.
- The northern portion of the west grid contains four soils with anomalous lead: 101, 117, 169, and 262 ppm Pb. Three of these samples are on isolated lines.
- These anomalous lead values correspond to elevated zinc values.
- One isolated elevated arsenic value on the easternmost line.

EAST GRID

- Four samples, assaying, respectively, 10, 13, 16, and 18 ppb Au, are located on the eastern grid near an anomalous RGS sample (25 ppb Au).
- These soil samples and the RGS sample are located near and below the eastern contact of the Klondike Schist with the Sulphur Creek Orthogneiss.
- Results show two clusters of elevated metal response: one in the northern portion of the grid showing broadly elevated arsenic and zinc, and the second at the southeastern edge of the grid.
- Soil samples from the east grid show two clusters of weakly elevated zinc, the two highest values are 310 and 412 ppm (samples NET 136 and 135), located in the northern portion of the east grid. Nearby sample NET175 contains high arsenic (152 ppm As) and weakly elevated zinc (184 ppm Zn).
- The southeast corner of the east grid is characterized by non-coincident but spotty adjacent elevated values for different elements. One of these samples located on the easternmost line, NET3 (13 ppb Au) is coincident with a weakly elevated copper content (99.5 ppm Cu). A nearby sample on the next line to the west, NET86, assayed 311 ppm As. Going further west to the next line, sample NET95 assayed 91 ppm As, and the last sample on the next line again to the west, NET 106, assayed an anomalous 7.21 ppm Ag. These samples are at or near the limit of the existing grid.
- Elevated Ni and Cr suggest presence of mafic component of Klondike schist in middle of northern portion of the east grid.

CONCLUSIONS AND RECOMMENDATIONS

According to the regional geology map, the property consists mainly of Klondike Schist which is bounded to the west by a Tertiary rhyolitic body and to the east by the Permian Sulphur Creek Orthogneiss. Historical work noted minor sulphide mineralization at the rhyolite contact. An RGS sample assayed 25 ppb Au on the eastern portion of the claim block.

This 2017 soil survey was conducted on isolated to widely spaced lines (0 to 250 m spacing), at an average sample spacing of 140 m. Sample density was greater in the eastern portion of the claims. No prospecting took place during this work program.

Metal response was generally muted for gold with a maximum value of 18 ppb Au. This does not preclude the potential for gold mineralization, as the gold signature in these unglaciated soils is typically weak. The property is still considered underexplored due to the wide line and sample spacing; large portions of the claim block remain unsampled.

- Soils and RGS samples with elevated gold are located near and downhill from the eastern contact of the Klondike Schist and the Sulphur Creek Orthogneiss, near the eastern extent of the east grid.
- A cluster of soils in the southern corner of the east grid show elevated metal response.
- Elevated values generally, but not always, correspond to higher topography. The depth of sampling may vary and affect results.
- Anomalous lead values characterize the northern portion of the west grid.

To continue assessing the potential of this property, the following work is proposed:

- Structural interpretation from satellite imagery or air photos, looking for evidence for structures as controls to orogenic gold mineralization.
- Increasing the density of soil sampling and expanding the soil coverage towards the east and south.
- Ensure sampling is done using soil augers instead of mattocks, to maximize the sampling depth.
- Geological mapping and prospecting of the property, with focus on the contacts, potential faults, and investigation of anomalous sample sites.

Additional work would be dependent on the results of this proposed phase of work.

Signed, in Whitehorse, October 30, 2018

Danièle Héon, P. Geo.

STATEMENT OF QUALIFICATIONS

I, Danièle Héon, of:

12 Marigold Place
Whitehorse, Yukon
Y1A 6A2

do hereby declare that;

- I am an independent contracting geologist.
- I graduated with a Bachelor of Science degree from McGill University in Montréal in 1984.
- I have worked as a geologist since graduation from university and in the Yukon since 1990.
- I am a member in good standing of the Association of Professional Engineers and Geoscientists of BC (APEGBC), no. 38518.
- I have not visited the property.
- I am the author of this report in which I compile and present the work and the results of the soil survey conducted by Coureur des Bois Exploration Ltée Ltd., based on the data provided by Coureur des Bois Exploration Ltée Ltd.
- I have not been involved in the fieldwork described herein, so therefore my responsibility is limited to the interpretation and presentation of the data provided.
- This report is intended to satisfy assessment requirements only.

Danièle Héon, P. Geo.

Property	NET
fieldwork dates	July 15-16-17 2017
mob/demob* dates	July 14 and 21 2017
number of pers-days incl. mob/demob	27.5
no. soil samples	289
Proportion of total exploration program costs (total \$151,424.30 for four properties)	25%
assays \$62.73/sample	\$18,128.97
wages	\$7,562.50
helicopter*^	\$19,455.24
hotel*^	\$1,046.46
food*^	\$1,540.78
fuel*	\$270.62
truck rental *	\$600.00
data & report	\$1,500.00
TOTAL EXPENDITURES	\$50,104.57

* denotes cost-shared expenses factored at TOP/DEN 55%, NET 25%, ICE 15 % and RIVER 5 %

^ Expenses previously assigned to AU claims have been subtracted

** adjusted to not include samples taken outside of claim boundaries

Based on information supplied by contractor

See *EXPENSES FILED WEST YUKON.pdf* for detailed allocation of expenses between projects.

See attached receipts

signed: Danièle Héon, P. Geo

Whitehorse, February 22, 2018

REFERENCES

Allan MM, Hart CJR, and Mortensen JK (eds), 2012. Yukon Gold Project Final Technical Report, Mineral Deposit Research Unit, University of British Columbia.

Allan MM, Hart CJR, and Mortensen JK (eds), 2012. Geological Map of the Dawson Range-White Gold Area, Yukon and East-Central Alaska, 1: 400,000, Mineral Deposit Research Unit, University of British Columbia.

Occidental Minerals Corp. of Canada Ltd, 1971. Geology and Chemistry of the LAD Claim Group. Assessment Report #061119 by P. Mehrotra & C.F. Gleeson.

Digital data as provided by the Yukon Geological Survey and government agencies, in particular:


- Deklerk, R. (compiler), 2003. Yukon MINFILE 2003 – A database of mineral occurrences. Yukon Geological Survey. And Yukon MINFILE, 2012. Yukon MINFILE – A database of mineral occurrences. Yukon Geological Survey, http://www.geology.gov.yk.ca/databases_gis.html
- Gordey, S.P., Makepeace, A.J., (compilers), , **2003-9(D)**, [Open File \(Geological - Bedrock\); Yukon Digital Geology \(version 2\)](#) Yukon Geological Survey.
- Mineral Claims (Yukon Mining Recorder) <http://www.yukonminingrecorder.ca/>
- Geomatics Yukon for regional shape file data: <http://geomaticsyukon.ca/data/datasets>
- Yukon Geological Survey. YGS Mapmaker online <http://mapservices.gov.yk.ca/YGS/Load.htm>

APPENDIX A – CLAIM MAP

NET Property - Claim Map 015N 07





Legend

 NET_claims_2018

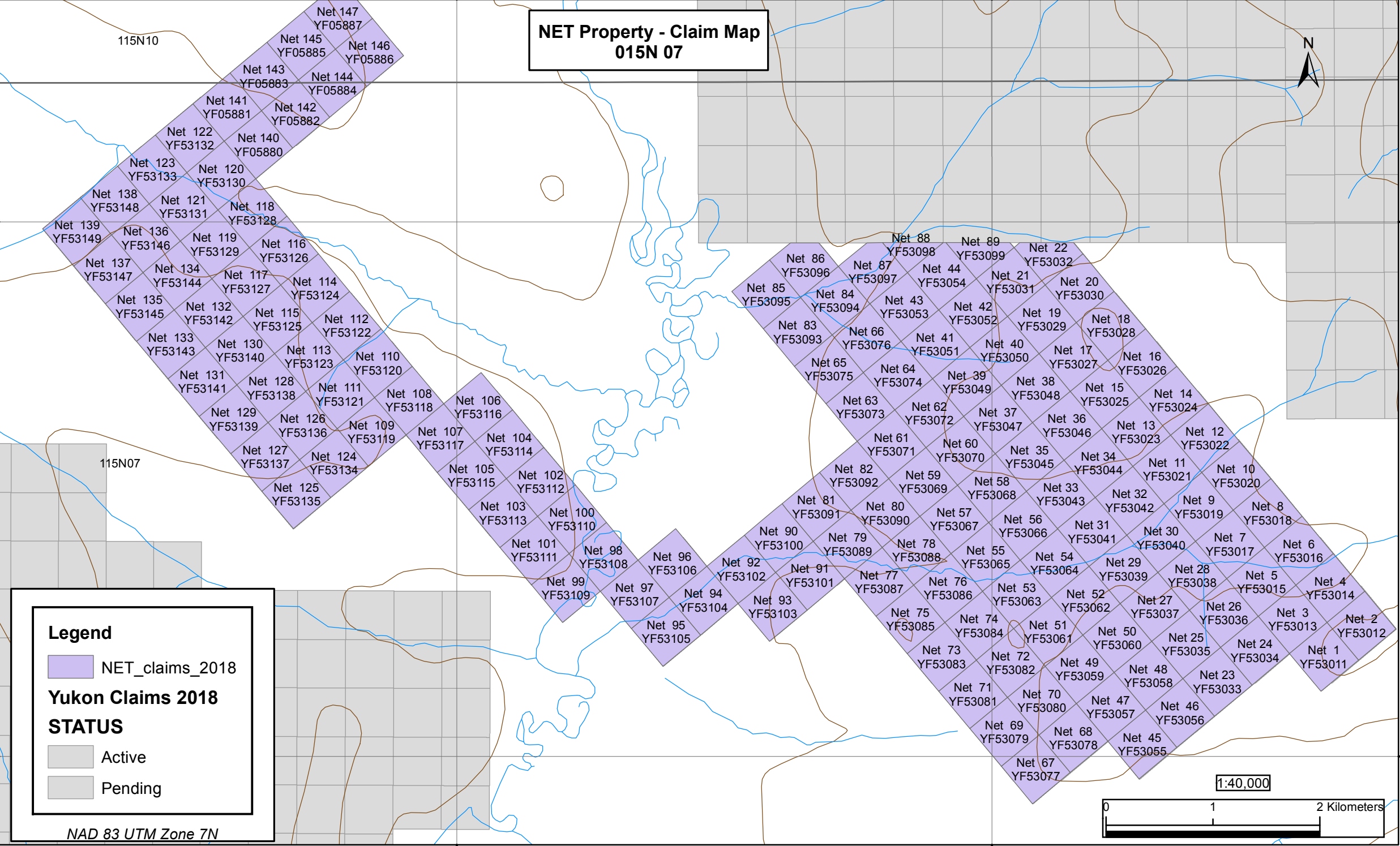
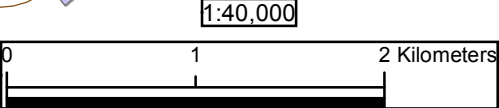
Yukon Claims 2018

STATUS

 Active

 Pending

NAD 83 UTM Zone 7N



APPENDIX B – CLAIM DATA

Grant Number	Claim Label	Claim Owner	NTS Map Number	Claim Expiry Date	Renewal Period (years)	Requested Expiry Date
YF05880	Net 140	Coureur des Bois Ltee Ltd. - 100%	115N07	29/05/2018	3	29-May-2021
YF05881	Net 141	Coureur des Bois Ltee Ltd. - 100%	115N07	29/05/2018	3	29-May-2021
YF05882	Net 142	Coureur des Bois Ltee Ltd. - 100%	115N07	29/05/2018	3	29-May-2021
YF05883	Net 143	Coureur des Bois Ltee Ltd. - 100%	115N07	29/05/2018	3	29-May-2021
YF05884	Net 144	Coureur des Bois Ltee Ltd. - 100%	115N07	29/05/2018	3	29-May-2021
YF05885	Net 145	Coureur des Bois Ltee Ltd. - 100%	115N07	29/05/2018	3	29-May-2021
YF05886	Net 146	Coureur des Bois Ltee Ltd. - 100%	115N07	29/05/2018	3	29-May-2021
YF05887	Net 147	Coureur des Bois Ltee Ltd. - 100%	115N07	29/05/2018	3	29-May-2021
YF53011	Net 1	Coureur des Bois Ltee Ltd. - 100%	115N07	21/03/2018	4	21-Mar-2022
YF53012	Net 2	Coureur des Bois Ltee Ltd. - 100%	115N07	21/03/2018	4	21-Mar-2022
YF53013	Net 3	Coureur des Bois Ltee Ltd. - 100%	115N07	21/03/2018	4	21-Mar-2022
YF53014	Net 4	Coureur des Bois Ltee Ltd. - 100%	115N07	21/03/2018	4	21-Mar-2022
YF53015	Net 5	Coureur des Bois Ltee Ltd. - 100%	115N07	21/03/2018	4	21-Mar-2022
YF53016	Net 6	Coureur des Bois Ltee Ltd. - 100%	115N07	21/03/2018	4	21-Mar-2022
YF53017	Net 7	Coureur des Bois Ltee Ltd. - 100%	115N07	21/03/2018	4	21-Mar-2022
YF53018	Net 8	Coureur des Bois Ltee Ltd. - 100%	115N07	21/03/2018	4	21-Mar-2022
YF53019	Net 9	Coureur des Bois Ltee Ltd. - 100%	115N07	21/03/2018	4	21-Mar-2022
YF53020	Net 10	Coureur des Bois Ltee Ltd. - 100%	115N07	21/03/2018	4	21-Mar-2022
YF53021	Net 11	Coureur des Bois Ltee Ltd. - 100%	115N07	21/03/2018	4	21-Mar-2022
YF53022	Net 12	Coureur des Bois Ltee Ltd. - 100%	115N07	21/03/2018	4	21-Mar-2022
YF53023	Net 13	Coureur des Bois Ltee Ltd. - 100%	115N07	21/03/2018	4	21-Mar-2022
YF53024	Net 14	Coureur des Bois Ltee Ltd. - 100%	115N07	21/03/2018	4	21-Mar-2022
YF53025	Net 15	Coureur des Bois Ltee Ltd. - 100%	115N07	21/03/2018	4	21-Mar-2022
YF53026	Net 16	Coureur des Bois Ltee Ltd. - 100%	115N07	21/03/2018	4	21-Mar-2022
YF53027	Net 17	Coureur des Bois Ltee Ltd. - 100%	115N07	21/03/2018	4	21-Mar-2022
YF53028	Net 18	Coureur des Bois Ltee Ltd. - 100%	115N07	21/03/2018	4	21-Mar-2022
YF53029	Net 19	Coureur des Bois Ltee Ltd. - 100%	115N07	21/03/2018	4	21-Mar-2022
YF53030	Net 20	Coureur des Bois Ltee Ltd. - 100%	115N07	21/03/2018	4	21-Mar-2022
YF53031	Net 21	Coureur des Bois Ltee Ltd. - 100%	115N07	21/03/2018	4	21-Mar-2022
YF53032	Net 22	Coureur des Bois Ltee Ltd. - 100%	115N07	21/03/2018	4	21-Mar-2022
YF53033	Net 23	Coureur des Bois Ltee Ltd. - 100%	115N07	21/03/2018	4	21-Mar-2022
YF53034	Net 24	Coureur des Bois Ltee Ltd. - 100%	115N07	21/03/2018	4	21-Mar-2022
YF53035	Net 25	Coureur des Bois Ltee Ltd. - 100%	115N07	21/03/2018	4	21-Mar-2022
YF53036	Net 26	Coureur des Bois Ltee Ltd. - 100%	115N07	21/03/2018	4	21-Mar-2022
YF53037	Net 27	Coureur des Bois Ltee Ltd. - 100%	115N07	21/03/2018	4	21-Mar-2022
YF53038	Net 28	Coureur des Bois Ltee Ltd. - 100%	115N07	21/03/2018	4	21-Mar-2022
YF53039	Net 29	Coureur des Bois Ltee Ltd. - 100%	115N07	21/03/2018	4	21-Mar-2022
YF53040	Net 30	Coureur des Bois Ltee Ltd. - 100%	115N07	21/03/2018	4	21-Mar-2022
YF53041	Net 31	Coureur des Bois Ltee Ltd. - 100%	115N07	21/03/2018	4	21-Mar-2022
YF53042	Net 32	Coureur des Bois Ltee Ltd. - 100%	115N07	21/03/2018	4	21-Mar-2022
YF53043	Net 33	Coureur des Bois Ltee Ltd. - 100%	115N07	21/03/2018	4	21-Mar-2022
YF53044	Net 34	Coureur des Bois Ltee Ltd. - 100%	115N07	21/03/2018	4	21-Mar-2022
YF53045	Net 35	Coureur des Bois Ltee Ltd. - 100%	115N07	21/03/2018	4	21-Mar-2022
YF53046	Net 36	Coureur des Bois Ltee Ltd. - 100%	115N07	21/03/2018	4	21-Mar-2022

Grant Number	Claim Label	Claim Owner	NTS Map Number	Claim Expiry Date	Renewal Period (years)	Requested Expiry Date
YF53047	Net 37	Coureur des Bois Ltee Ltd. - 100%	115N07	21/03/2018	4	21-Mar-2022
YF53048	Net 38	Coureur des Bois Ltee Ltd. - 100%	115N07	21/03/2018	4	21-Mar-2022
YF53049	Net 39	Coureur des Bois Ltee Ltd. - 100%	115N07	21/03/2018	4	21-Mar-2022
YF53050	Net 40	Coureur des Bois Ltee Ltd. - 100%	115N07	21/03/2018	4	21-Mar-2022
YF53051	Net 41	Coureur des Bois Ltee Ltd. - 100%	115N07	21/03/2018	4	21-Mar-2022
YF53052	Net 42	Coureur des Bois Ltee Ltd. - 100%	115N07	21/03/2018	4	21-Mar-2022
YF53053	Net 43	Coureur des Bois Ltee Ltd. - 100%	115N07	21/03/2018	4	21-Mar-2022
YF53054	Net 44	Coureur des Bois Ltee Ltd. - 100%	115N07	21/03/2018	4	21-Mar-2022
YF53055	Net 45	Coureur des Bois Ltee Ltd. - 100%	115N07	21/03/2018	4	21-Mar-2022
YF53056	Net 46	Coureur des Bois Ltee Ltd. - 100%	115N07	21/03/2018	4	21-Mar-2022
YF53057	Net 47	Coureur des Bois Ltee Ltd. - 100%	115N07	21/03/2018	4	21-Mar-2022
YF53058	Net 48	Coureur des Bois Ltee Ltd. - 100%	115N07	21/03/2018	4	21-Mar-2022
YF53059	Net 49	Coureur des Bois Ltee Ltd. - 100%	115N07	21/03/2018	4	21-Mar-2022
YF53060	Net 50	Coureur des Bois Ltee Ltd. - 100%	115N07	21/03/2018	4	21-Mar-2022
YF53061	Net 51	Coureur des Bois Ltee Ltd. - 100%	115N07	21/03/2018	4	21-Mar-2022
YF53062	Net 52	Coureur des Bois Ltee Ltd. - 100%	115N07	21/03/2018	4	21-Mar-2022
YF53063	Net 53	Coureur des Bois Ltee Ltd. - 100%	115N07	21/03/2018	4	21-Mar-2022
YF53064	Net 54	Coureur des Bois Ltee Ltd. - 100%	115N07	21/03/2018	4	21-Mar-2022
YF53065	Net 55	Coureur des Bois Ltee Ltd. - 100%	115N07	21/03/2018	4	21-Mar-2022
YF53066	Net 56	Coureur des Bois Ltee Ltd. - 100%	115N07	21/03/2018	4	21-Mar-2022
YF53067	Net 57	Coureur des Bois Ltee Ltd. - 100%	115N07	21/03/2018	4	21-Mar-2022
YF53068	Net 58	Coureur des Bois Ltee Ltd. - 100%	115N07	21/03/2018	4	21-Mar-2022
YF53069	Net 59	Coureur des Bois Ltee Ltd. - 100%	115N07	21/03/2018	4	21-Mar-2022
YF53070	Net 60	Coureur des Bois Ltee Ltd. - 100%	115N07	21/03/2018	4	21-Mar-2022
YF53071	Net 61	Coureur des Bois Ltee Ltd. - 100%	115N07	21/03/2018	3	21-Mar-2021
YF53072	Net 62	Coureur des Bois Ltee Ltd. - 100%	115N07	21/03/2018	3	21-Mar-2021
YF53073	Net 63	Coureur des Bois Ltee Ltd. - 100%	115N07	21/03/2018	3	21-Mar-2021
YF53074	Net 64	Coureur des Bois Ltee Ltd. - 100%	115N07	21/03/2018	3	21-Mar-2021
YF53075	Net 65	Coureur des Bois Ltee Ltd. - 100%	115N07	21/03/2018	3	21-Mar-2021
YF53076	Net 66	Coureur des Bois Ltee Ltd. - 100%	115N07	21/03/2018	3	21-Mar-2021
YF53077	Net 67	Coureur des Bois Ltee Ltd. - 100%	115N07	21/03/2018	3	21-Mar-2021
YF53078	Net 68	Coureur des Bois Ltee Ltd. - 100%	115N07	21/03/2018	3	21-Mar-2021
YF53079	Net 69	Coureur des Bois Ltee Ltd. - 100%	115N07	21/03/2018	3	21-Mar-2021
YF53080	Net 70	Coureur des Bois Ltee Ltd. - 100%	115N07	21/03/2018	3	21-Mar-2021
YF53081	Net 71	Coureur des Bois Ltee Ltd. - 100%	115N07	21/03/2018	3	21-Mar-2021
YF53082	Net 72	Coureur des Bois Ltee Ltd. - 100%	115N07	21/03/2018	3	21-Mar-2021
YF53083	Net 73	Coureur des Bois Ltee Ltd. - 100%	115N07	21/03/2018	3	21-Mar-2021
YF53084	Net 74	Coureur des Bois Ltee Ltd. - 100%	115N07	21/03/2018	3	21-Mar-2021
YF53085	Net 75	Coureur des Bois Ltee Ltd. - 100%	115N07	21/03/2018	3	21-Mar-2021
YF53086	Net 76	Coureur des Bois Ltee Ltd. - 100%	115N07	21/03/2018	3	21-Mar-2021
YF53087	Net 77	Coureur des Bois Ltee Ltd. - 100%	115N07	21/03/2018	3	21-Mar-2021
YF53088	Net 78	Coureur des Bois Ltee Ltd. - 100%	115N07	21/03/2018	3	21-Mar-2021
YF53089	Net 79	Coureur des Bois Ltee Ltd. - 100%	115N07	21/03/2018	3	21-Mar-2021
YF53090	Net 80	Coureur des Bois Ltee Ltd. - 100%	115N07	21/03/2018	3	21-Mar-2021

Grant Number	Claim Label	Claim Owner	NTS Map Number	Claim Expiry Date	Renewal Period (years)	Requested Expiry Date
YF53091	Net 81	Coureur des Bois Ltee Ltd. - 100%	115N07	21/03/2018	3	21-Mar-2021
YF53092	Net 82	Coureur des Bois Ltee Ltd. - 100%	115N07	21/03/2018	3	21-Mar-2021
YF53093	Net 83	Coureur des Bois Ltee Ltd. - 100%	115N07	21/03/2018	3	21-Mar-2021
YF53094	Net 84	Coureur des Bois Ltee Ltd. - 100%	115N07	21/03/2018	3	21-Mar-2021
YF53095	Net 85	Coureur des Bois Ltee Ltd. - 100%	115N07	21/03/2018	3	21-Mar-2021
YF53096	Net 86	Coureur des Bois Ltee Ltd. - 100%	115N07	21/03/2018	3	21-Mar-2021
YF53097	Net 87	Coureur des Bois Ltee Ltd. - 100%	115N07	21/03/2018	3	21-Mar-2021
YF53098	Net 88	Coureur des Bois Ltee Ltd. - 100%	115N07	21/03/2018	3	21-Mar-2021
YF53099	Net 89	Coureur des Bois Ltee Ltd. - 100%	115N07	21/03/2018	3	21-Mar-2021
YF53100	Net 90	Coureur des Bois Ltee Ltd. - 100%	115N07	21/03/2018	3	21-Mar-2021
YF53101	Net 91	Coureur des Bois Ltee Ltd. - 100%	115N07	21/03/2018	3	21-Mar-2021
YF53102	Net 92	Coureur des Bois Ltee Ltd. - 100%	115N07	21/03/2018	3	21-Mar-2021
YF53103	Net 93	Coureur des Bois Ltee Ltd. - 100%	115N07	21/03/2018	3	21-Mar-2021
YF53104	Net 94	Coureur des Bois Ltee Ltd. - 100%	115N07	21/03/2018	3	21-Mar-2021
YF53105	Net 95	Coureur des Bois Ltee Ltd. - 100%	115N07	21/03/2018	3	21-Mar-2021
YF53106	Net 96	Coureur des Bois Ltee Ltd. - 100%	115N07	21/03/2018	3	21-Mar-2021
YF53107	Net 97	Coureur des Bois Ltee Ltd. - 100%	115N07	21/03/2018	3	21-Mar-2021
YF53108	Net 98	Coureur des Bois Ltee Ltd. - 100%	115N07	21/03/2018	3	21-Mar-2021
YF53109	Net 99	Coureur des Bois Ltee Ltd. - 100%	115N07	21/03/2018	3	21-Mar-2021
YF53110	Net 100	Coureur des Bois Ltee Ltd. - 100%	115N07	21/03/2018	3	21-Mar-2021
YF53111	Net 101	Coureur des Bois Ltee Ltd. - 100%	115N07	21/03/2018	3	21-Mar-2021
YF53112	Net 102	Coureur des Bois Ltee Ltd. - 100%	115N07	21/03/2018	3	21-Mar-2021
YF53113	Net 103	Coureur des Bois Ltee Ltd. - 100%	115N07	21/03/2018	3	21-Mar-2021
YF53114	Net 104	Coureur des Bois Ltee Ltd. - 100%	115N07	21/03/2018	3	21-Mar-2021
YF53115	Net 105	Coureur des Bois Ltee Ltd. - 100%	115N07	21/03/2018	3	21-Mar-2021
YF53116	Net 106	Coureur des Bois Ltee Ltd. - 100%	115N07	21/03/2018	3	21-Mar-2021
YF53117	Net 107	Coureur des Bois Ltee Ltd. - 100%	115N07	21/03/2018	3	21-Mar-2021
YF53118	Net 108	Coureur des Bois Ltee Ltd. - 100%	115N07	21/03/2018	3	21-Mar-2021
YF53119	Net 109	Coureur des Bois Ltee Ltd. - 100%	115N07	21/03/2018	3	21-Mar-2021
YF53120	Net 110	Coureur des Bois Ltee Ltd. - 100%	115N07	21/03/2018	3	21-Mar-2021
YF53121	Net 111	Coureur des Bois Ltee Ltd. - 100%	115N07	21/03/2018	3	21-Mar-2021
YF53122	Net 112	Coureur des Bois Ltee Ltd. - 100%	115N07	21/03/2018	3	21-Mar-2021
YF53123	Net 113	Coureur des Bois Ltee Ltd. - 100%	115N07	21/03/2018	3	21-Mar-2021
YF53124	Net 114	Coureur des Bois Ltee Ltd. - 100%	115N07	21/03/2018	3	21-Mar-2021
YF53125	Net 115	Coureur des Bois Ltee Ltd. - 100%	115N07	21/03/2018	3	21-Mar-2021
YF53126	Net 116	Coureur des Bois Ltee Ltd. - 100%	115N07	21/03/2018	3	21-Mar-2021
YF53127	Net 117	Coureur des Bois Ltee Ltd. - 100%	115N07	21/03/2018	3	21-Mar-2021
YF53128	Net 118	Coureur des Bois Ltee Ltd. - 100%	115N07	21/03/2018	3	21-Mar-2021
YF53129	Net 119	Coureur des Bois Ltee Ltd. - 100%	115N07	21/03/2018	3	21-Mar-2021
YF53130	Net 120	Coureur des Bois Ltee Ltd. - 100%	115N07	21/03/2018	3	21-Mar-2021
YF53131	Net 121	Coureur des Bois Ltee Ltd. - 100%	115N07	21/03/2018	3	21-Mar-2021
YF53132	Net 122	Coureur des Bois Ltee Ltd. - 100%	115N07	21/03/2018	3	21-Mar-2021
YF53133	Net 123	Coureur des Bois Ltee Ltd. - 100%	115N07	21/03/2018	3	21-Mar-2021
YF53134	Net 124	Coureur des Bois Ltee Ltd. - 100%	115N07	21/03/2018	3	21-Mar-2021

Grant Number	Claim Label	Claim Owner	NTS Map Number	Claim Expiry Date	Renewal Period (years)	Requested Expiry Date
YF53135	Net 125	Coureur des Bois Ltee Ltd. - 100%	115N07	21/03/2018	3	21-Mar-2021
YF53136	Net 126	Coureur des Bois Ltee Ltd. - 100%	115N07	21/03/2018	3	21-Mar-2021
YF53137	Net 127	Coureur des Bois Ltee Ltd. - 100%	115N07	21/03/2018	3	21-Mar-2021
YF53138	Net 128	Coureur des Bois Ltee Ltd. - 100%	115N07	21/03/2018	3	21-Mar-2021
YF53139	Net 129	Coureur des Bois Ltee Ltd. - 100%	115N07	21/03/2018	3	21-Mar-2021
YF53140	Net 130	Coureur des Bois Ltee Ltd. - 100%	115N07	21/03/2018	3	21-Mar-2021
YF53141	Net 131	Coureur des Bois Ltee Ltd. - 100%	115N07	21/03/2018	3	21-Mar-2021
YF53142	Net 132	Coureur des Bois Ltee Ltd. - 100%	115N07	21/03/2018	3	21-Mar-2021
YF53143	Net 133	Coureur des Bois Ltee Ltd. - 100%	115N07	21/03/2018	3	21-Mar-2021
YF53144	Net 134	Coureur des Bois Ltee Ltd. - 100%	115N07	21/03/2018	3	21-Mar-2021
YF53145	Net 135	Coureur des Bois Ltee Ltd. - 100%	115N07	21/03/2018	3	21-Mar-2021
YF53146	Net 136	Coureur des Bois Ltee Ltd. - 100%	115N07	21/03/2018	3	21-Mar-2021
YF53147	Net 137	Coureur des Bois Ltee Ltd. - 100%	115N07	21/03/2018	3	21-Mar-2021
YF53148	Net 138	Coureur des Bois Ltee Ltd. - 100%	115N07	21/03/2018	3	21-Mar-2021
YF53149	Net 139	Coureur des Bois Ltee Ltd. - 100%	115N07	21/03/2018	3	21-Mar-2021

APPENDIX C – SAMPLE LOCATION MAPS

**NET Property - Claims worked
015N 07**



Legend

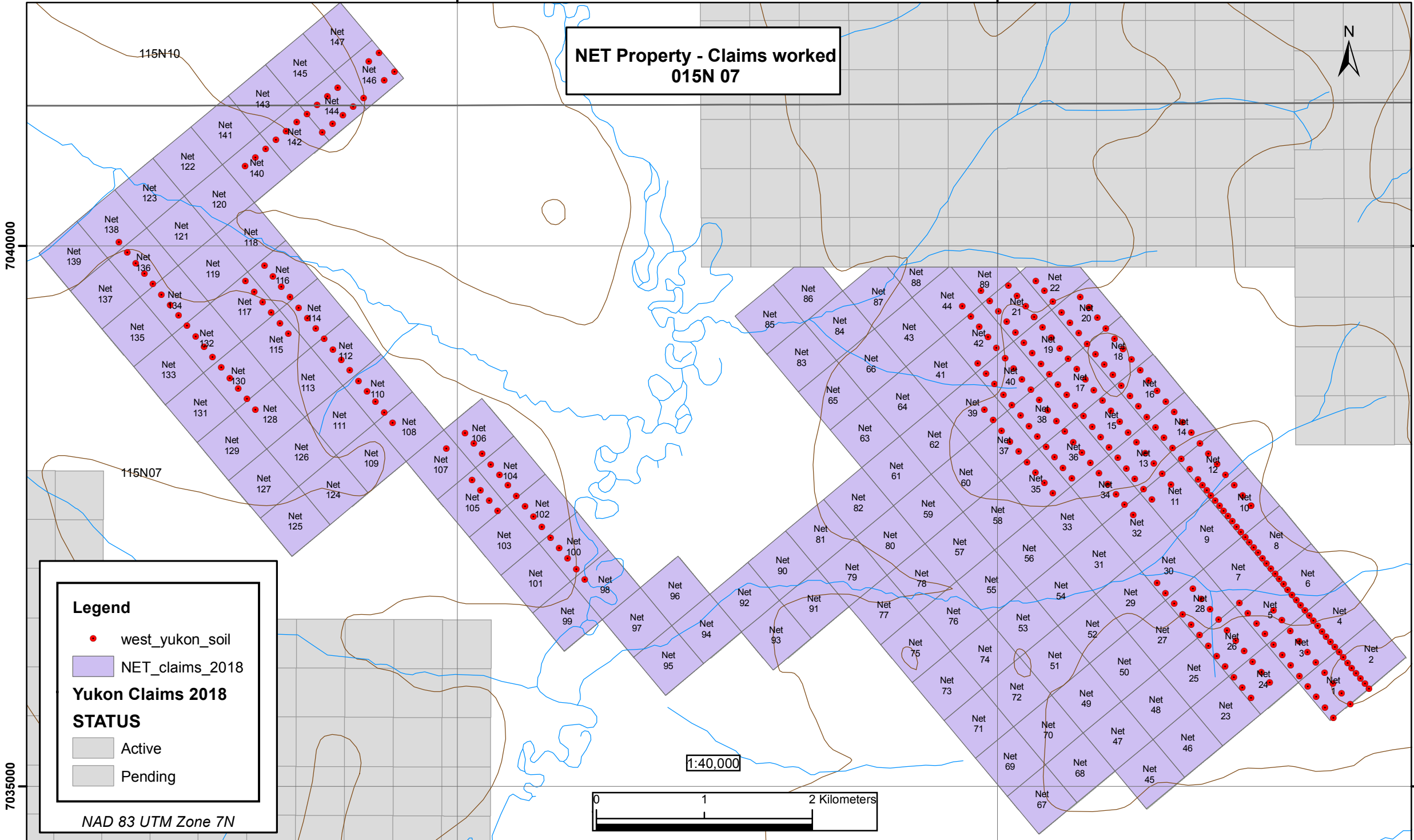
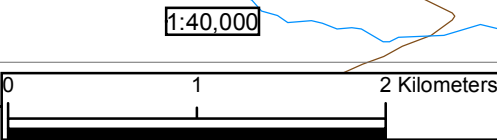
- west_yukon_soil
- NET_claims_2018

Yukon Claims 2018

STATUS

- Active
- Pending

NAD 83 UTM Zone 7N



510000

512000

**NET Claims - East portion
2017 Sample Location Map
015N 07**



7038000

7038000

7036000

7036000

7034000

7034000

510000

512000

Legend

- west_yukon_soil
- NET_claims_2018

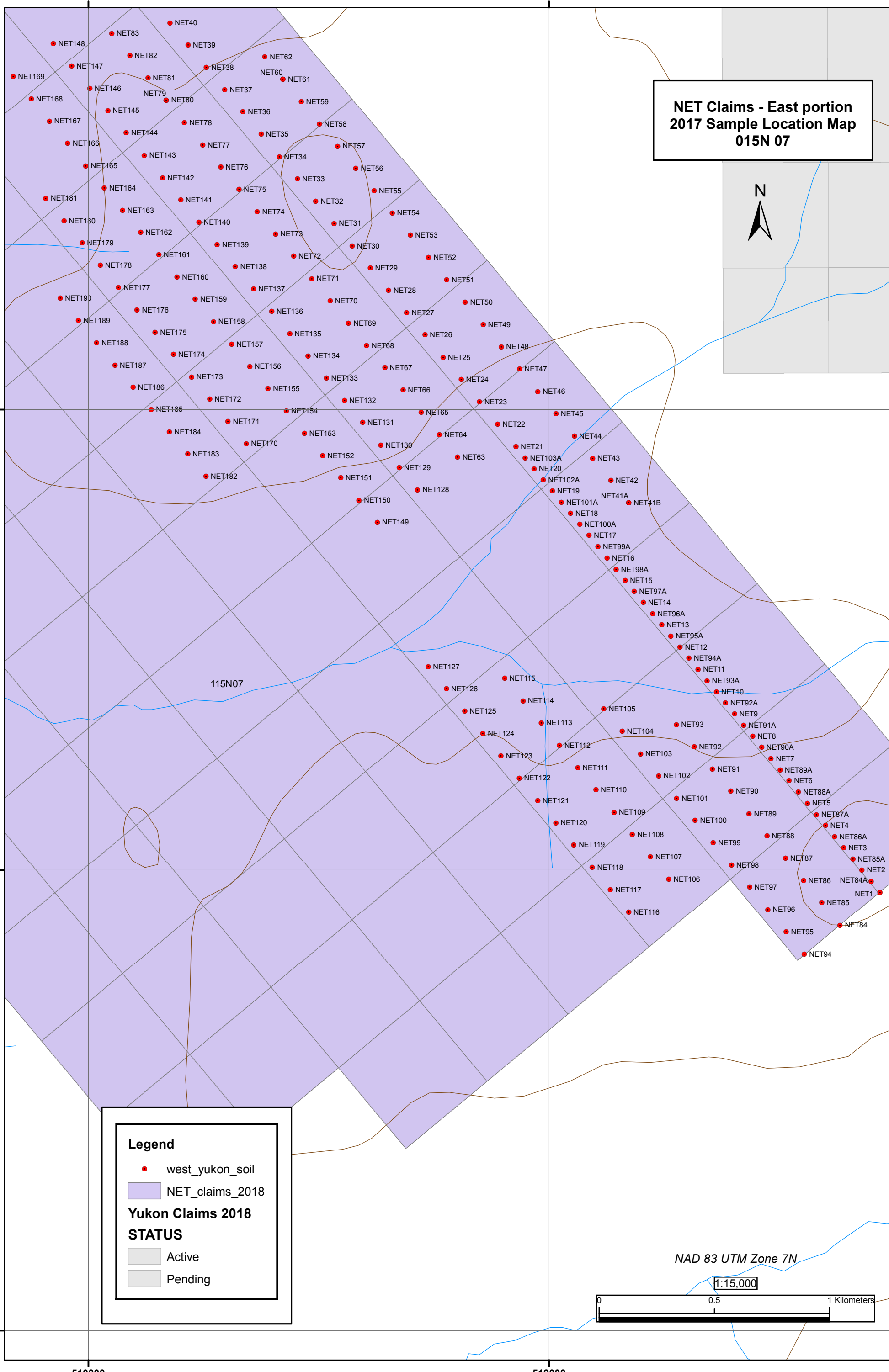
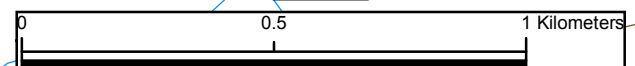
**Yukon Claims 2018
STATUS**

- Active
- Pending

115N07

NAD 83 UTM Zone 7N

1:15,000



505000

NET Claims - West portion 2017 Sample Location Map 015N 07



115N10

115N07

7040000

7040000

Legend

- west_yukon_soil
- NET_claims_2018

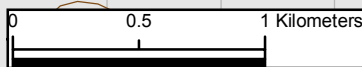
Yukon Claims 2018

STATUS

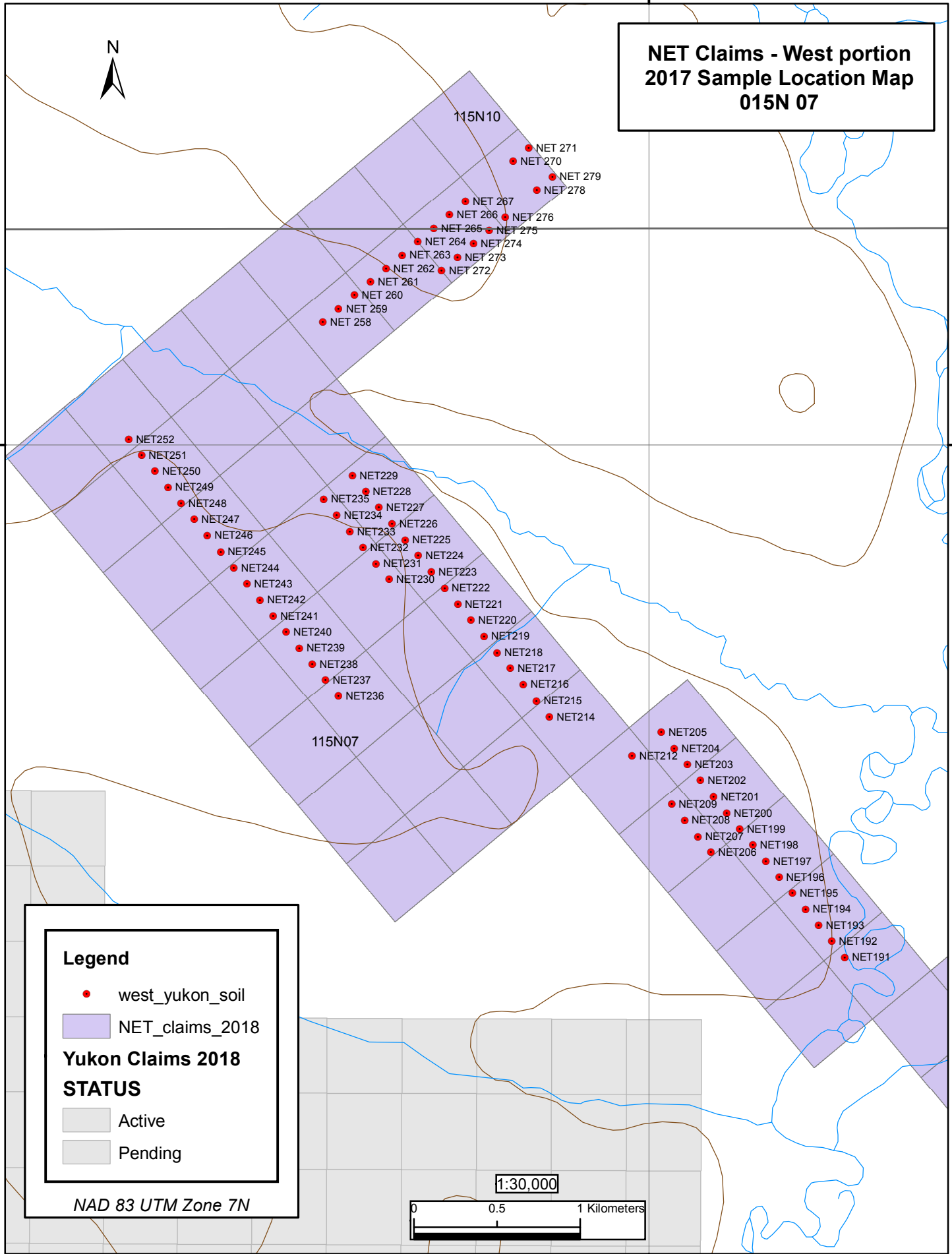
- Active
- Pending

NAD 83 UTM Zone 7N

1:30,000



505000



APPENDIX D – SAMPLE LOCATION DATA

Sample	UTM_E	UTM_N
NET1	513437	7035904
NET2	513358	7036001
NET3	513279	7036098
NET4	513200	7036194
NET5	513121	7036291
NET6	513042	7036389
NET7	512963	7036485
NET8	512884	7036582
NET9	512805	7036678
NET10	512726	7036775
NET11	512647	7036872
NET12	512568	7036969
NET13	512489	7037066
NET14	512409	7037163
NET15	512330	7037259
NET16	512252	7037356
NET17	512173	7037454
NET18	512093	7037550
NET19	512014	7037647
NET20	511935	7037744
NET21	511856	7037840
NET22	511777	7037937
NET23	511698	7038035
NET24	511619	7038131
NET25	511540	7038228
NET26	511461	7038325
NET27	511382	7038421
NET28	511303	7038518
NET29	511224	7038616
NET30	511145	7038712
NET31	511066	7038809
NET32	510987	7038906
NET33	510908	7039002
NET34	510829	7039099
NET35	510750	7039197
NET36	510671	7039294
NET37	510592	7039390
NET38	510512	7039487
NET39	510433	7039584
NET40	510354	7039680

Sample	UTM_E	UTM_N
NET42	512268	7037693
NET43	512189	7037789
NET44	512110	7037886
NET45	512030	7037983
NET46	511951	7038079
NET47	511872	7038177
NET48	511793	7038274
NET49	511714	7038370
NET50	511636	7038467
NET51	511556	7038564
NET52	511477	7038661
NET53	511398	7038758
NET54	511319	7038855
NET55	511240	7038951
NET56	511161	7039048
NET57	511082	7039145
NET58	511003	7039241
NET59	510924	7039339
NET60	510845	7039436
NET61	510845	7039436
NET62	510766	7039532
NET63	511603	7037795
NET64	511524	7037891
NET65	511445	7037989
NET66	511366	7038086
NET67	511287	7038183
NET68	511208	7038279
NET69	511129	7038376
NET70	511050	7038473
NET71	510970	7038569
NET72	510891	7038667
NET73	510812	7038764
NET74	510733	7038860
NET75	510654	7038957
NET76	510575	7039054
NET77	510496	7039150
NET78	510417	7039248
NET79	510338	7039345
NET80	510338	7039345
NET81	510259	7039442

Sample	UTM_E	UTM_N
NET82	510180	7039538
NET83	510101	7039635
NET84	513263	7035761
NET85	513184	7035859
NET86	513105	7035955
NET87	513026	7036052
NET88	512946	7036149
NET89	512868	7036245
NET90	512789	7036343
NET91	512709	7036440
NET92	512630	7036536
NET93	512552	7036633
NET94	513108	7035636
NET95	513029	7035732
NET96	512950	7035829
NET97	512871	7035926
NET98	512792	7036022
NET99	512713	7036119
NET100	512634	7036217
NET101	512554	7036313
NET102	512476	7036410
NET103	512397	7036506
NET104	512317	7036603
NET105	512238	7036701
NET106	512519	7035961
NET107	512440	7036058
NET108	512361	7036155
NET109	512282	7036252
NET110	512203	7036349
NET111	512124	7036445
NET112	512045	7036542
NET113	511966	7036640
NET114	511887	7036736
NET115	511807	7036833
NET116	512345	7035819
NET117	512266	7035915
NET118	512187	7036013
NET119	512107	7036110
NET120	512029	7036206
NET121	511950	7036303

Sample	UTM_E	UTM_N
NET122	511870	7036400
NET123	511791	7036497
NET124	511712	7036594
NET125	511634	7036691
NET126	511554	7036787
NET127	511475	7036884
NET128	511429	7037653
NET129	511350	7037749
NET130	511270	7037846
NET131	511191	7037944
NET132	511112	7038040
NET133	511033	7038137
NET134	510954	7038234
NET135	510875	7038330
NET136	510796	7038427
NET137	510717	7038525
NET138	510638	7038622
NET139	510559	7038718
NET140	510480	7038815
NET141	510401	7038912
NET142	510322	7039008
NET143	510243	7039105
NET144	510164	7039203
NET145	510085	7039299
NET146	510006	7039396
NET147	509927	7039493
NET148	509848	7039590
NET149	511254	7037511
NET150	511175	7037607
NET151	511096	7037704
NET152	511017	7037801
NET153	510938	7037898
NET154	510859	7037995
NET155	510780	7038092
NET156	510701	7038188
NET157	510622	7038285
NET158	510543	7038382
NET159	510464	7038480
NET160	510385	7038576
NET161	510306	7038673

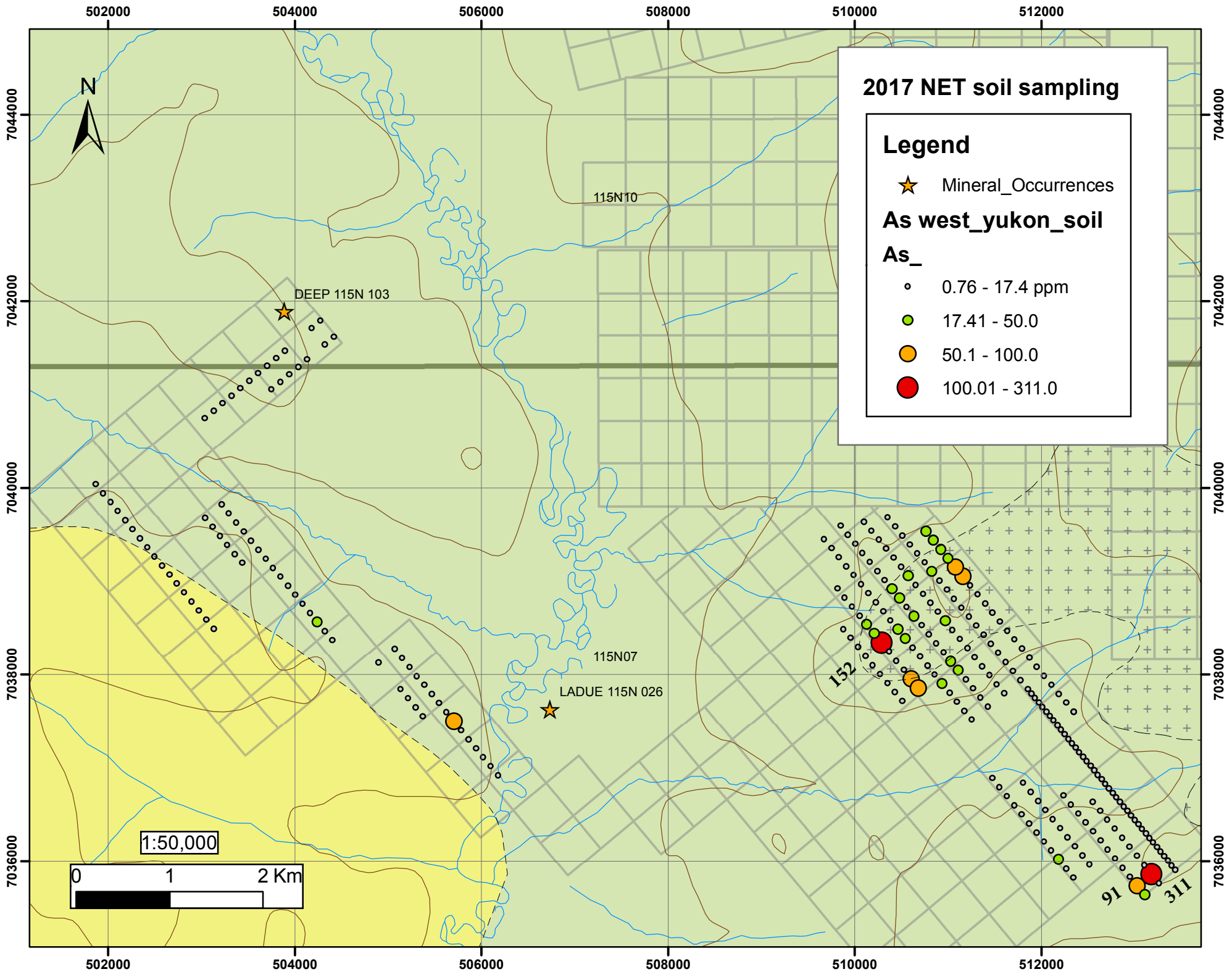
Sample	UTM_E	UTM_N
NET162	510227	7038770
NET163	510148	7038866
NET164	510069	7038963
NET165	509989	7039060
NET166	509910	7039157
NET167	509831	7039254
NET168	509752	7039351
NET169	509673	7039448
NET170	510685	7037853
NET171	510606	7037950
NET172	510527	7038046
NET173	510448	7038143
NET174	510369	7038240
NET175	510290	7038336
NET176	510211	7038434
NET177	510131	7038531
NET178	510052	7038628
NET179	509973	7038724
NET180	509894	7038821
NET181	509815	7038918
NET182	510510	7037711
NET183	510431	7037808
NET184	510352	7037904
NET185	510273	7038001
NET186	510194	7038098
NET187	510115	7038194
NET188	510036	7038291
NET189	509957	7038388
NET190	509878	7038484
NET191	506178	7036915
NET192	506099	7037012
NET193	506020	7037109
NET194	505941	7037205
NET195	505862	7037302
NET196	505783	7037399
NET197	505704	7037496
NET198	505625	7037593
NET199	505546	7037689
NET200	505467	7037786
NET201	505388	7037883

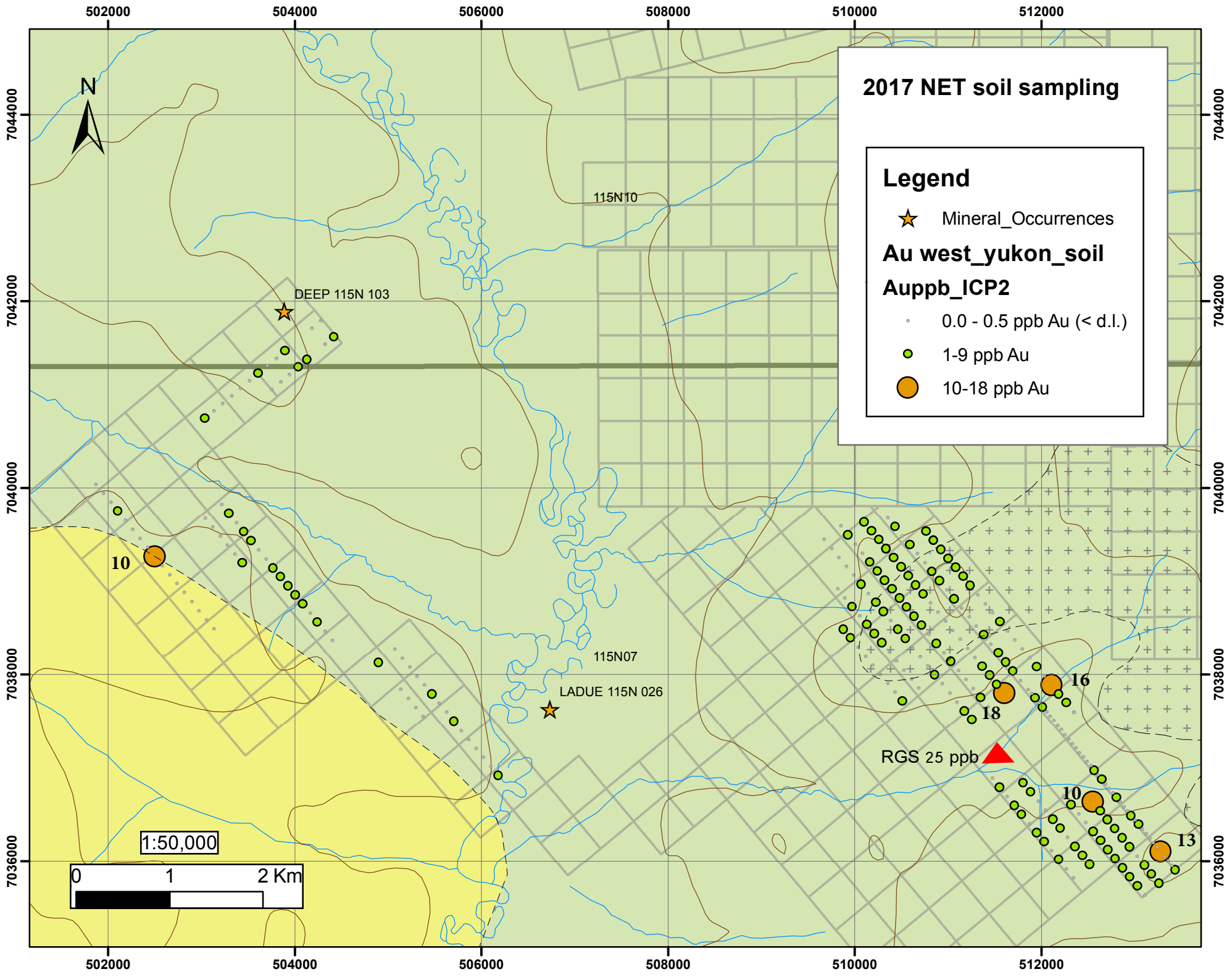
Sample	UTM_E	UTM_N
NET202	505309	7037980
NET203	505230	7038077
NET204	505151	7038173
NET205	505072	7038270
NET206	505372	7037548
NET207	505293	7037644
NET208	505214	7037741
NET209	505135	7037838
NET212	504898	7038128
NET214	504400	7038365
NET215	504321	7038462
NET216	504242	7038559
NET217	504163	7038656
NET218	504084	7038752
NET219	504005	7038849
NET220	503926	7038946
NET221	503847	7039043
NET222	503768	7039140
NET223	503688	7039237
NET224	503610	7039334
NET225	503530	7039430
NET226	503451	7039527
NET227	503372	7039624
NET228	503293	7039721
NET229	503214	7039818
NET230	503435	7039192
NET231	503356	7039288
NET232	503277	7039384
NET233	503198	7039481
NET234	503119	7039578
NET235	503040	7039675
NET236	503130	7038488
NET237	503051	7038585
NET238	502972	7038682
NET239	502893	7038778
NET240	502814	7038876
NET241	502735	7038972
NET242	502656	7039068
NET243	502577	7039165
NET244	502498	7039262

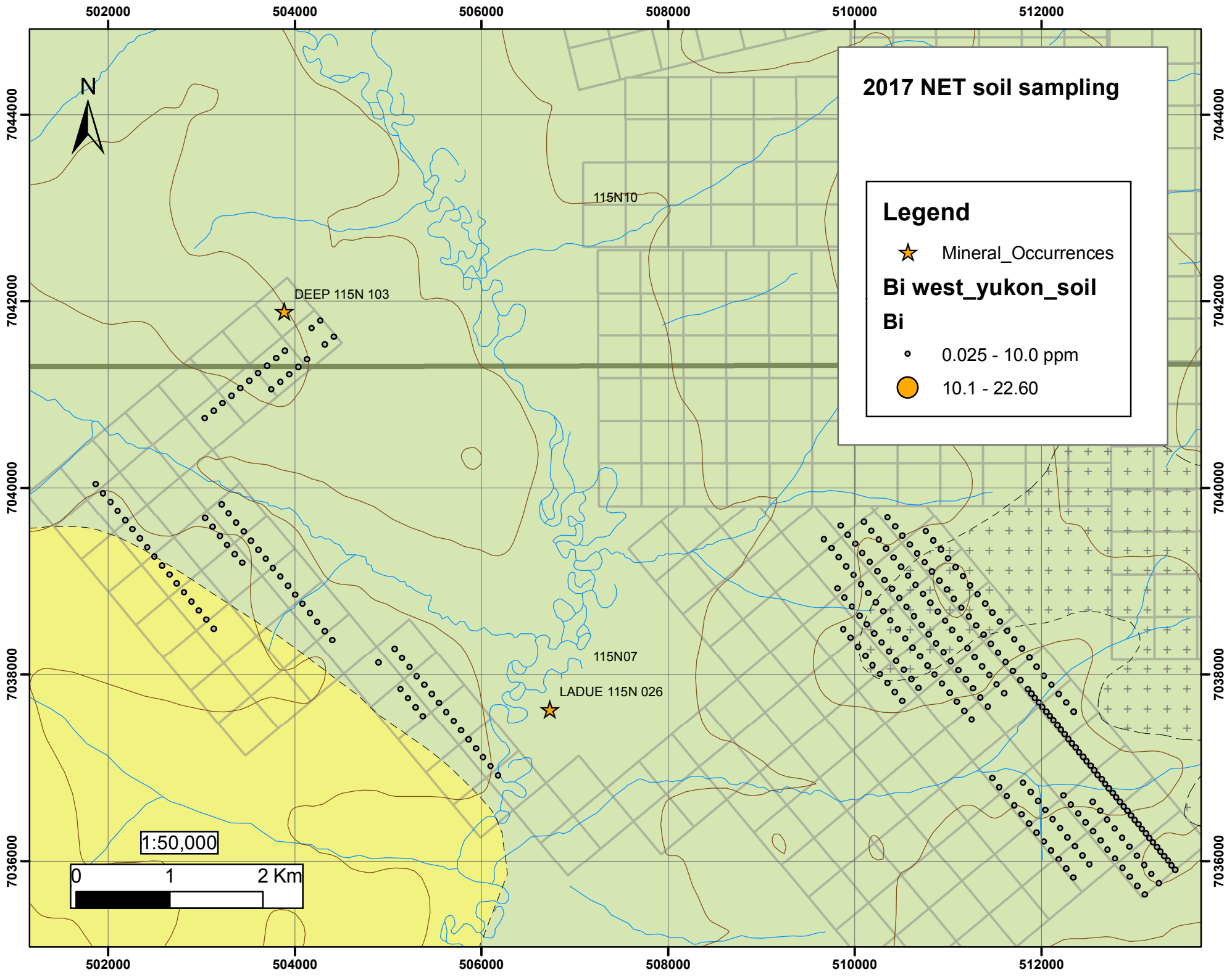
Sample	UTM_E	UTM_N
NET245	502419	7039359
NET246	502340	7039456
NET247	502261	7039553
NET248	502182	7039650
NET249	502103	7039747
NET250	502024	7039844
NET251	501944	7039940
NET252	501866	7040037
NET 258	503035	7040741
NET 259	503130	7040822
NET 260	503225	7040903
NET 261	503321	7040983
NET 262	503416	7041064
NET 263	503512	7041145
NET 264	503607	7041226
NET 265	503703	7041306
NET 266	503798	7041387
NET 267	503893	7041468
NET 270	504180	7041710
NET 271	504275	7041790
NET 272	503750	7041051
NET 273	503845	7041132
NET 274	503941	7041213
NET 275	504036	7041293
NET 276	504132	7041374
NET 278	504322	7041535
NET 279	504418	7041617
NET100A	512133	7037502
NET101A	512054	7037598
NET102A	511975	7037695
NET103A	511896	7037791
NET41A	512346	7037596
NET41B	512346	7037596
NET84A	513398	7035952
NET85A	513319	7036049
NET86A	513240	7036145
NET87A	513161	7036242
NET88A	513082	7036340
NET89A	513003	7036436
NET90A	512923	7036533

Sample	UTM_E	UTM_N
NET91A	512845	7036630
NET92A	512766	7036726
NET93A	512686	7036823
NET94A	512607	7036921
NET95A	512529	7037017
NET96A	512450	7037114
NET97A	512370	7037211
NET98A	512291	7037307
NET99A	512212	7037405

APPENDIX E – GEOCHEM MAPS







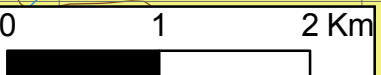
2017 NET soil sampling

Legend

- ★ Mineral_Occurrences
- Bi west_yukon_soil**
- Bi**
- 0.025 - 10.0 ppm
- 10.1 - 22.60



1:50,000

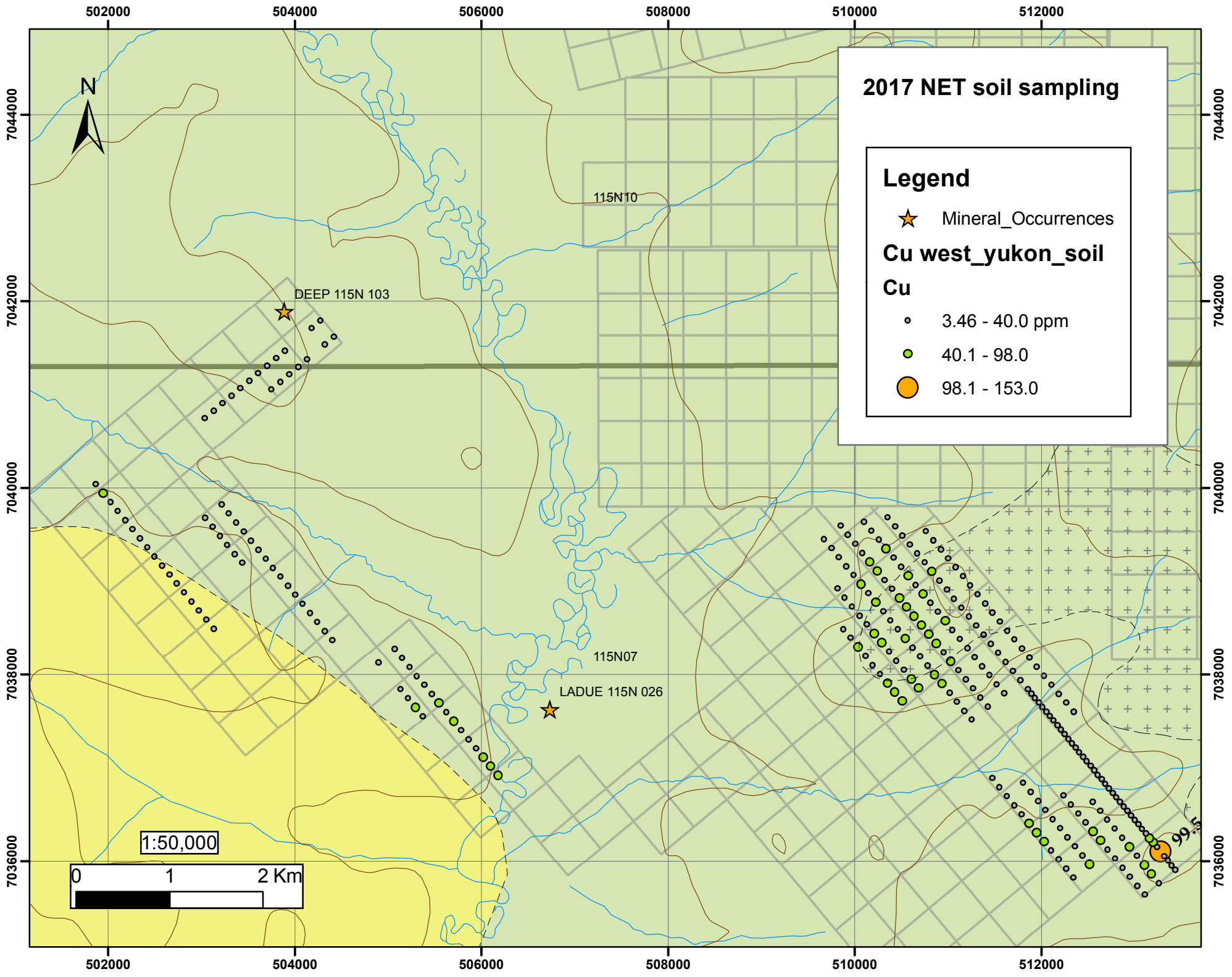


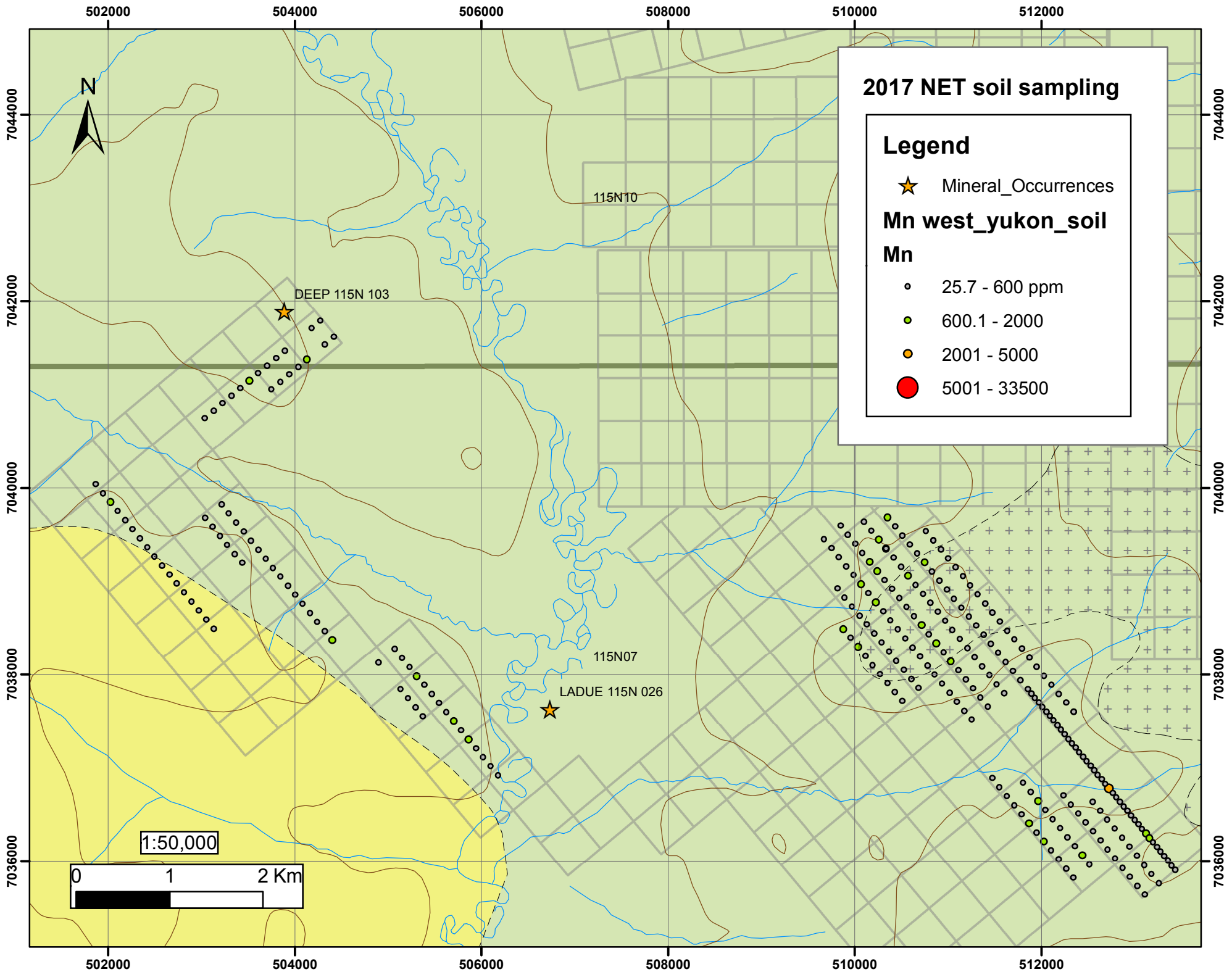
DEEP 115N 103

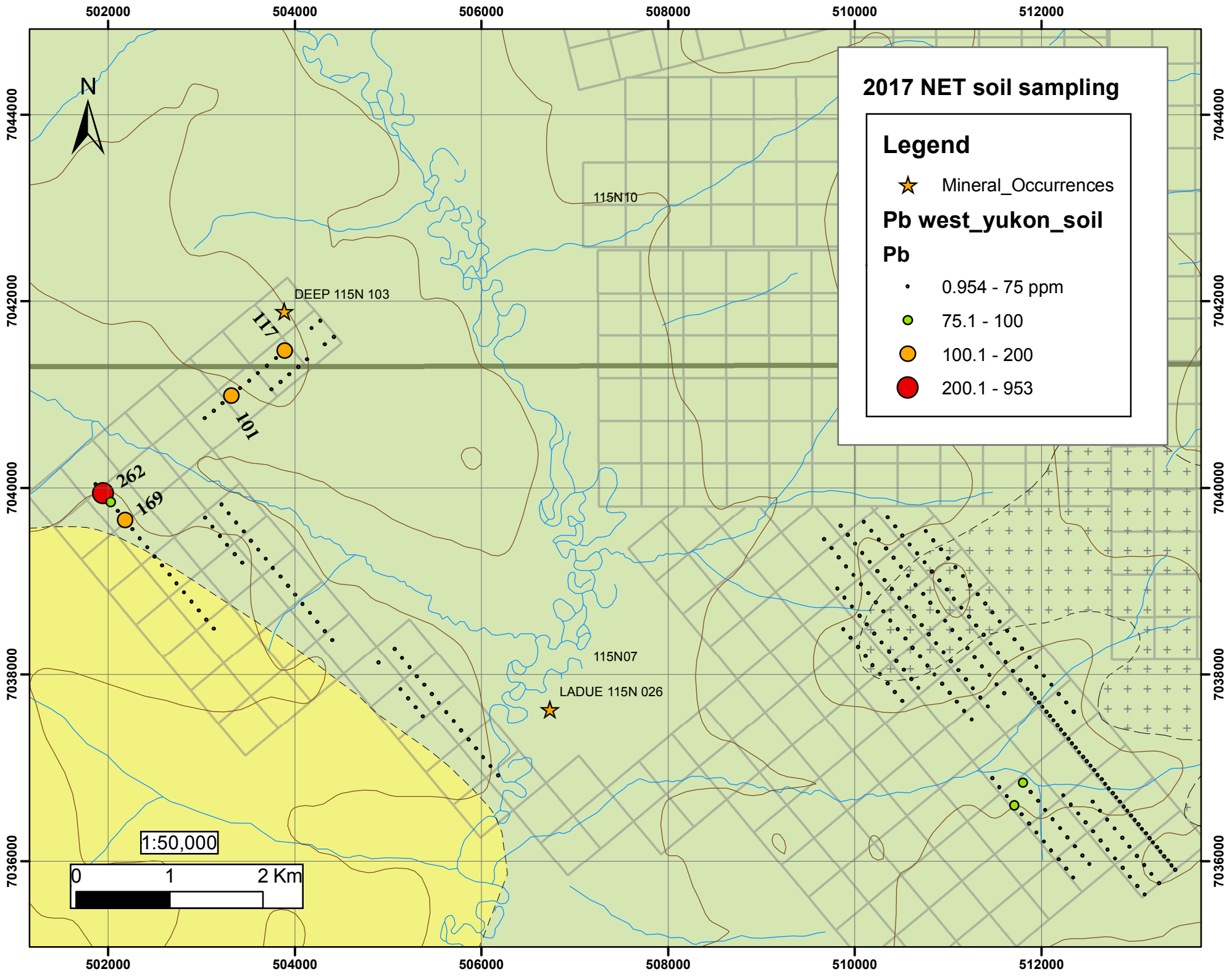
LADUE 115N 026

115N07

115N10







2017 NET soil sampling

Legend

- ★ Mineral_Occurrences

Pb west_yukon_soil

Pb

- 0.954 - 75 ppm
- 75.1 - 100
- 100.1 - 200
- 200.1 - 953

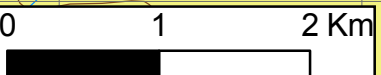
502000 504000 506000 508000 510000 512000

7044000
7042000
7040000
7038000
7036000

502000 504000 506000 508000 510000 512000



1:50,000



DEEP 115N 103

115N10

115N07

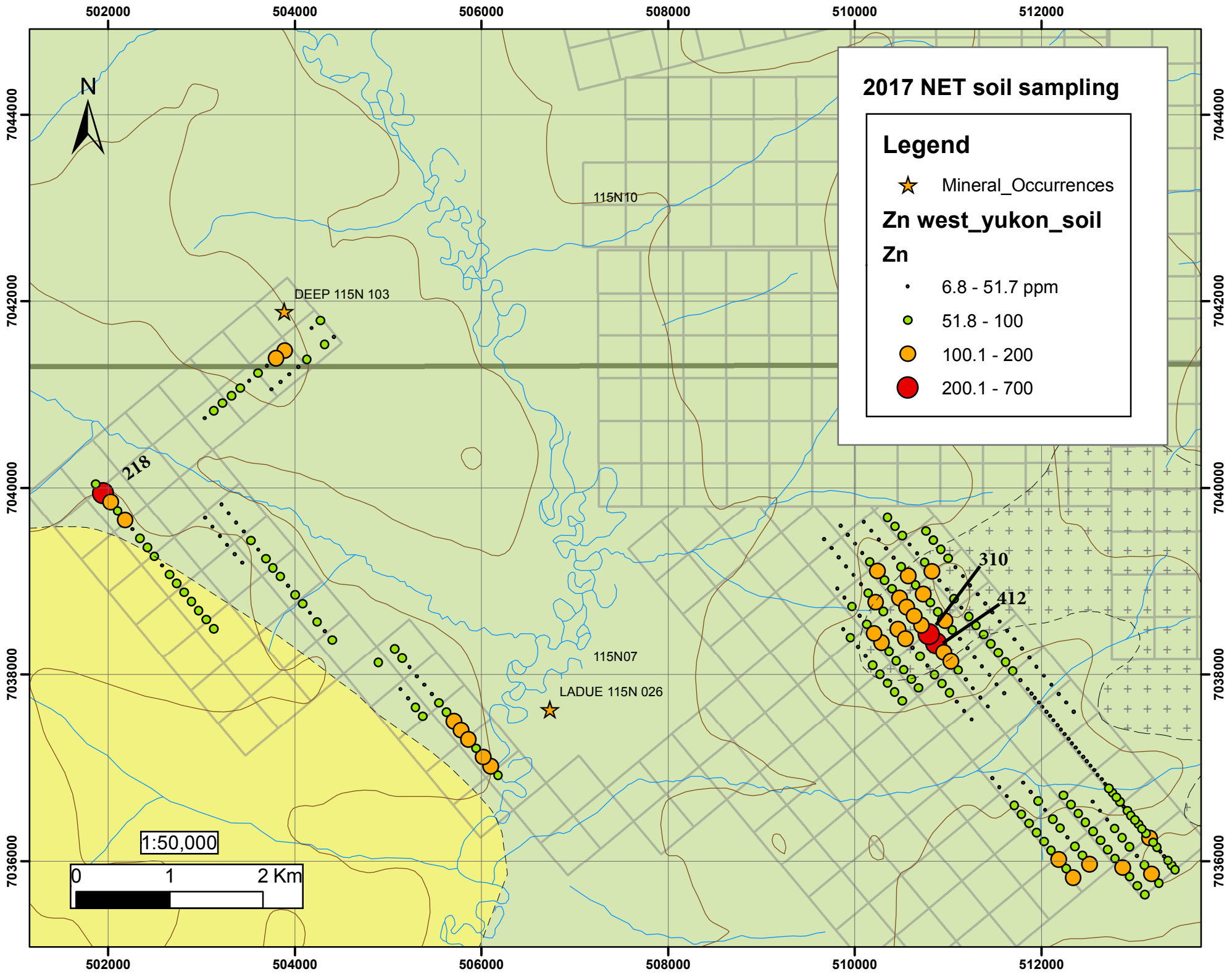
LADUE 115N 026

262

169

101

117



APPENDIX F – MINFILE DESCRIPTIONS



MINFILE DETAILS

Occurrence Number: 115N 103

Occurrence Name: DEEP

Occurrence Type: Hard-rock

Status: Unknown

Deposit Type(s): Unknown

Location(s): 63°30'19" N - -140°55'19" W

NTS Mapsheet(s): 115N10

Location Comments: 1 Kilometres

Hand Samples Available: No

Last Reviewed:

Work History

Date	Work Type	Comment
12/31/1978	Geology	
12/31/1978	Other	

Capsule

Work History

Staked within a group of 19 CR claims (staked nonsequentially, claim 1000 = YA31043) in Jun/78 by Ocean Home Exploration Company Ltd (Inco Ltd & Kennco Explorations), which conducted mapping and geochem sampling later in the year.

Capsule Geology

The claims are underlain by Klondike Schist (Permian).

References

Map Location



MINFILE DETAILS

Occurrence Number: 115N 026

Occurrence Name: LADUE

Occurrence Type: Hard-rock

Status: Showing

Deposit Type(s): Porphyry Cu-Mo-Au

Location(s): 63°28'1" N - -140°51'54" W

NTS Mapsheet(s): 115N07

Location Comments: 1 Kilometres

Hand Samples Available: Yes

Last Reviewed:

Work History

Date	Work Type	Comment
12/31/1970	Geochemistry	
12/31/1970	Geology	

Capsule

Work History

Staked as Lad cl 1-36 (Y57637) in Apr/70 by Canadian Occidental Petroleum Ltd, which conducted grid soil sampling and mapping. Restaked as Glad cl 1-8 (YA10415) and 9-24 (YA10423) in Aug/77 by Cities Services Ltd.

Capsule Geology

Minor molybdenite and chalcopyrite were found near the contact between Tertiary rhyolite and Paleozoic? metasedimentary rocks and are associated with a small, circular 100 gamma aeromagnetic anomaly. Soil sampling outlined two low order copper-zinc anomalies.

References

OCCIDENTAL MINERALS CORP. OF CANADA LTD, Sep/71. Assessment Report #061119 by P. Mehrotra & C.F. Gleeson.

Map Location

APPENDIX G – ASSAY CERTIFICATES

See Data Folder for Secured Assay Certificates