

Project Information:
 Survey by: SJ Geophysics Ltd.
 Survey Type: Voltterra-3DIP
 Survey Date: June 2016
 Inversion by: SJ Geophysics Ltd.
 Inversion Software: UBC-GIF DCIP3D

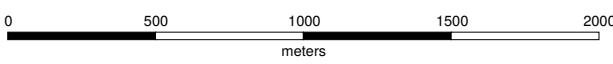
Instrumentation:
 Receiver: Voltterra 24-bit Four Channel Acquisition Units
 Transmitter: GDD TX II
 Array Type: Distributed 3DIP

Mapping Information:
 Datum: NAD83
 Projection: UTM Zone 8N
 Inversion Model: dcinv3dUTM.con
 Colour Classification: Modified Logarithmic
 Mapping Date: 18-Jul-2016

Voltterra – 3DIP Survey

Interpreted Resistivity Inversion Model (ohm-m)

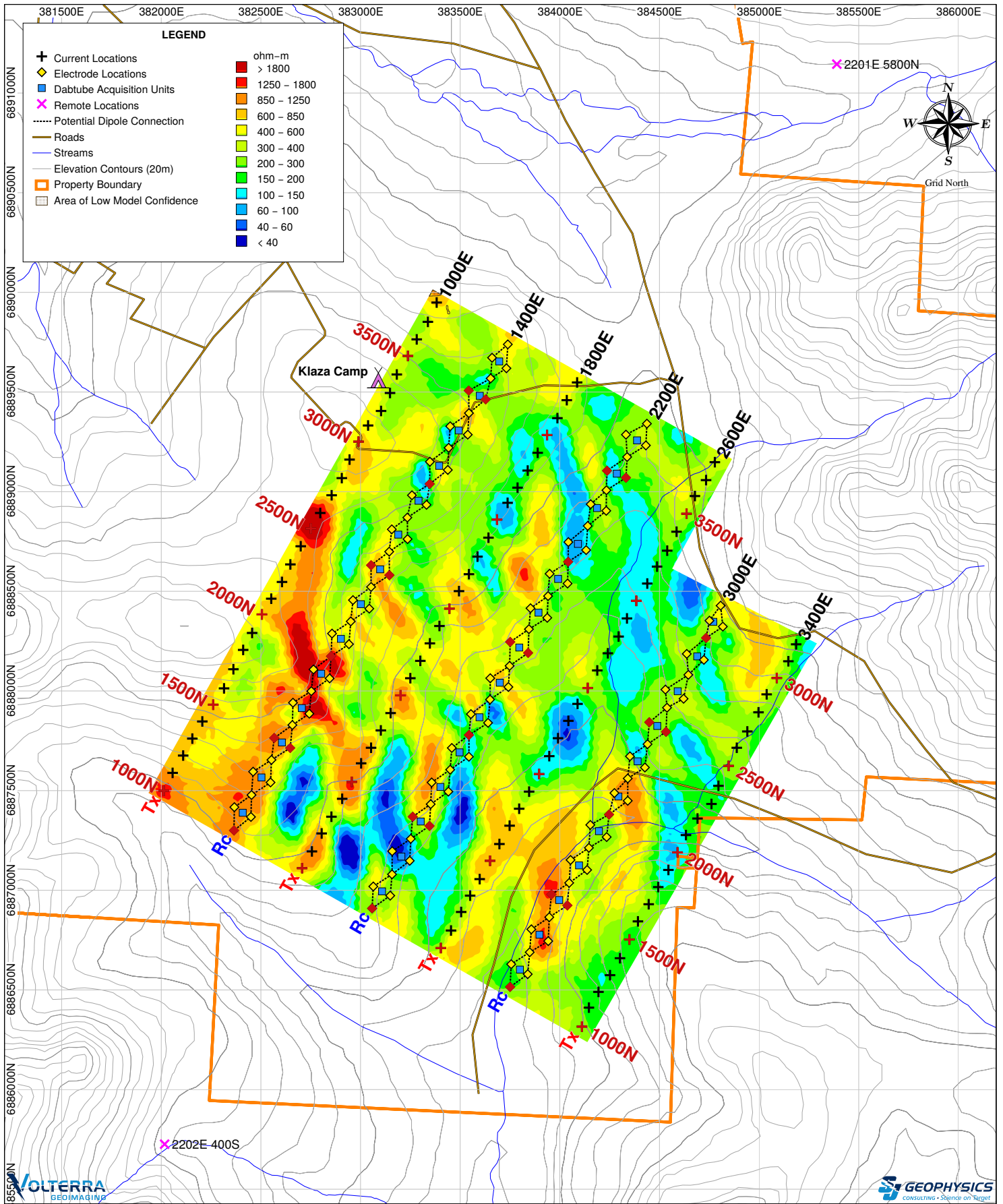
Depth: 50m Below Topography



Rockhaven Resources Ltd.

Klaza Property

Yukon Territory, Canada



Project Information:
 Survey by: SJ Geophysics Ltd.
 Survey Type: Voltterra-3DIP
 Survey Date: June 2016
 Inversion by: SJ Geophysics Ltd.
 Inversion Software: UBC-GIF DCIP3D

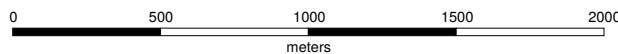
Instrumentation:
 Receiver: Voltterra 24-bit Four Channel Acquisition Units
 Transmitter: GDD TX II
 Array Type: Distributed 3DIP

Mapping Information:
 Datum: NAD83
 Projection: UTM Zone 8N
 Inversion Model: dcin3dUTM.con
 Colour Classification: Modified Logarithmic
 Mapping Date: 18-Jul-2016

Voltterra – 3DIP Survey

Interpreted Resistivity Inversion Model (ohm-m)

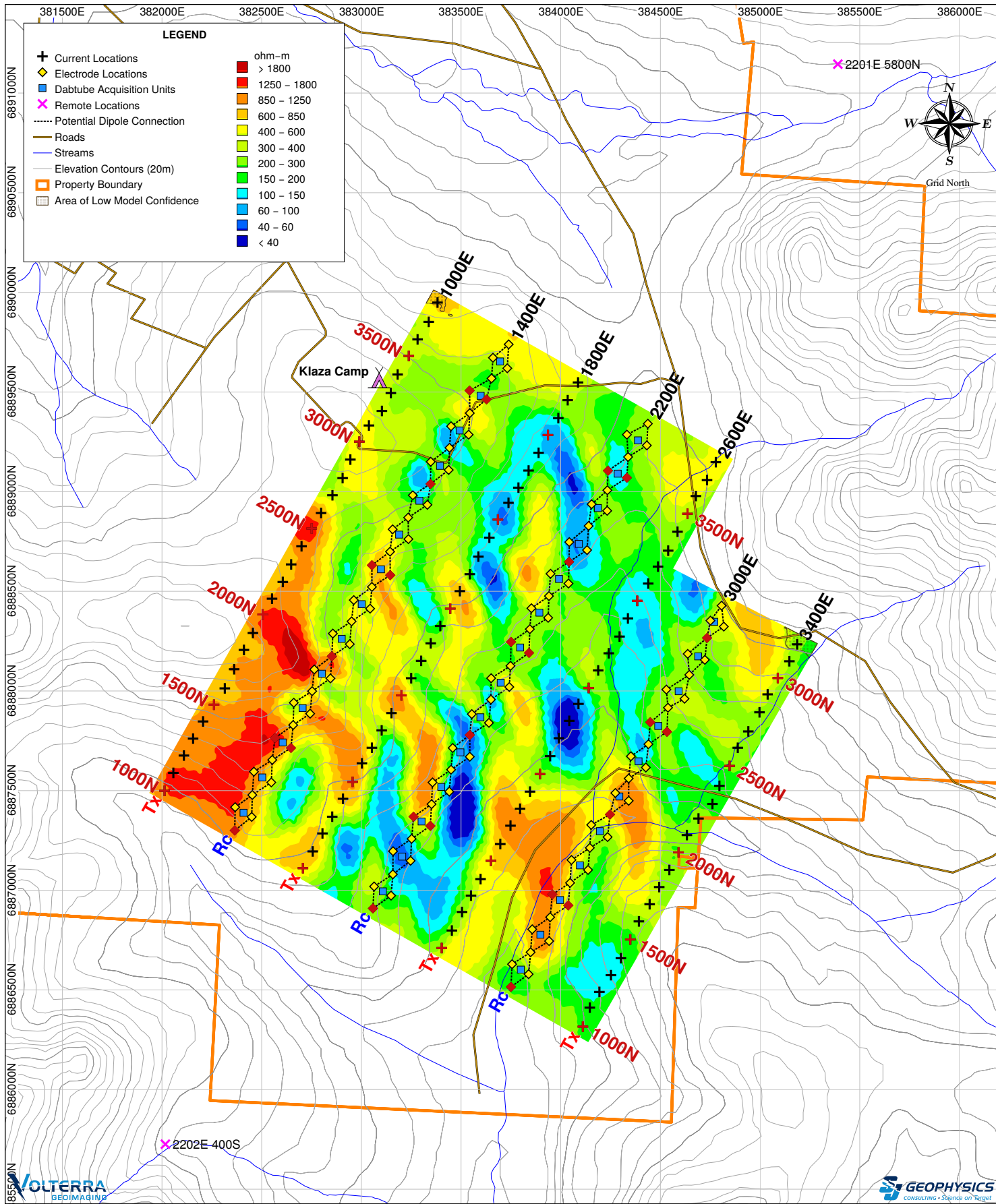
Depth: 100m Below Topography



Rockhaven Resources Ltd.

Klaza Property

Yukon Territory, Canada



Project Information:
 Survey by: SJ Geophysics Ltd.
 Survey Type: Voltterra-3DIP
 Survey Date: June 2016
 Inversion by: SJ Geophysics Ltd.
 Inversion Software: UBC-GIF DCIP3D

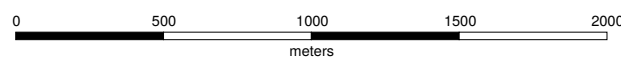
Instrumentation:
 Receiver: Voltterra 24-bit Four Channel Acquisition Units
 Transmitter: GDD TX II
 Array Type: Distributed 3DIP

Mapping Information:
 Datum: NAD83
 Projection: UTM Zone 8N
 Inversion Model: dcin3dUTM.con
 Colour Classification: Modified Logarithmic
 Mapping Date: 18-Jul-2016

Voltterra – 3DIP Survey

Interpreted Resistivity Inversion Model (ohm-m)

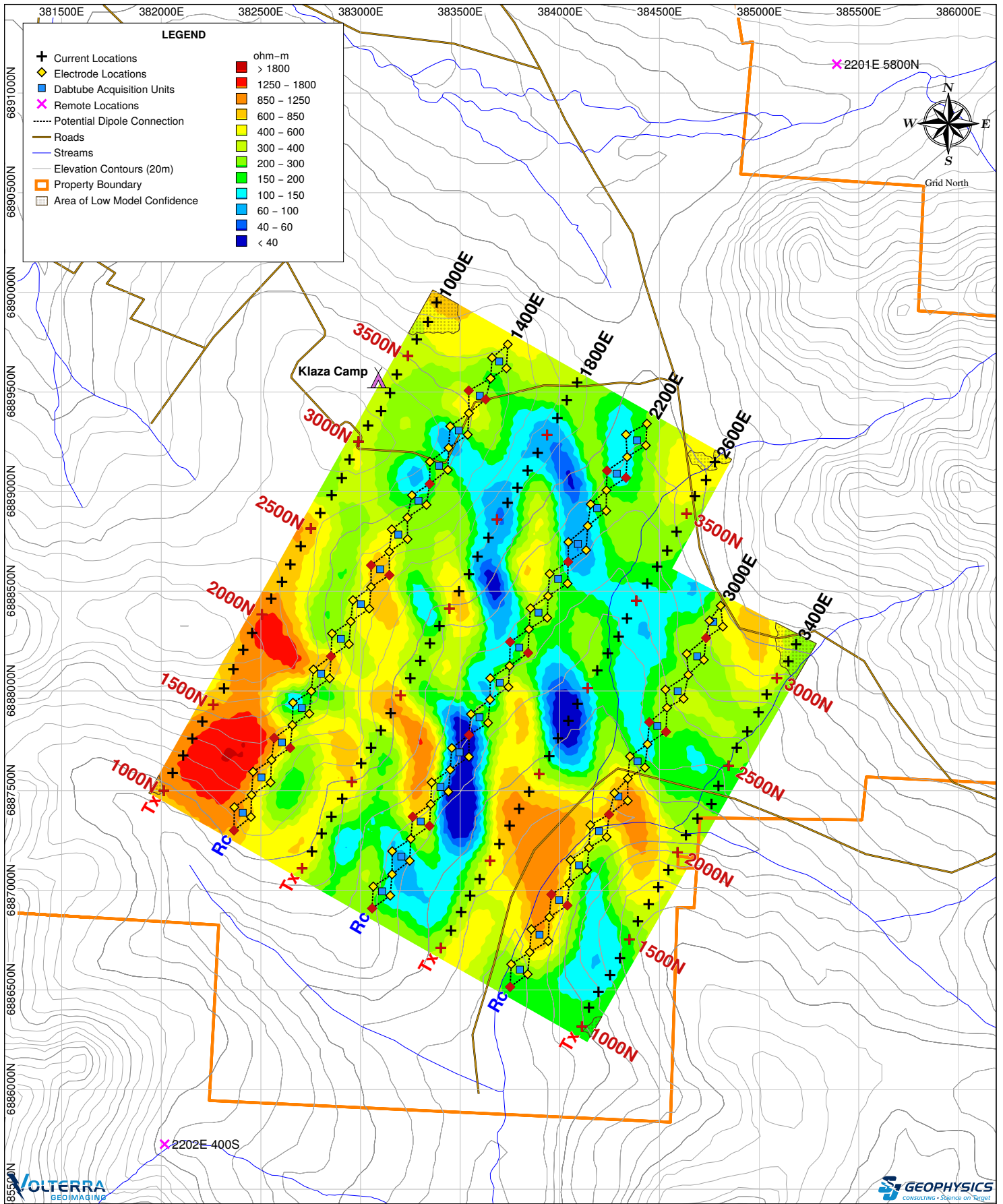
Depth: 150m Below Topography



Rockhaven Resources Ltd.

Klaza Property

Yukon Territory, Canada



Project Information:
 Survey by: SJ Geophysics Ltd.
 Survey Type: Voltterra-3DIP
 Survey Date: June 2016
 Inversion by: SJ Geophysics Ltd.
 Inversion Software: UBC-GIF DCIP3D

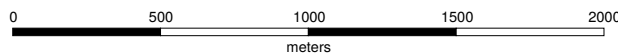
Instrumentation:
 Receiver: Voltterra 24-bit Four Channel Acquisition Units
 Transmitter: GDD TX II
 Array Type: Distributed 3DIP

Mapping Information:
 Datum: NAD83
 Projection: UTM Zone 8N
 Inversion Model: dcin3dUTM.con
 Colour Classification: Modified Logarithmic
 Mapping Date: 18-Jul-2016

Volterra – 3DIP Survey

Interpreted Resistivity Inversion Model (ohm-m)

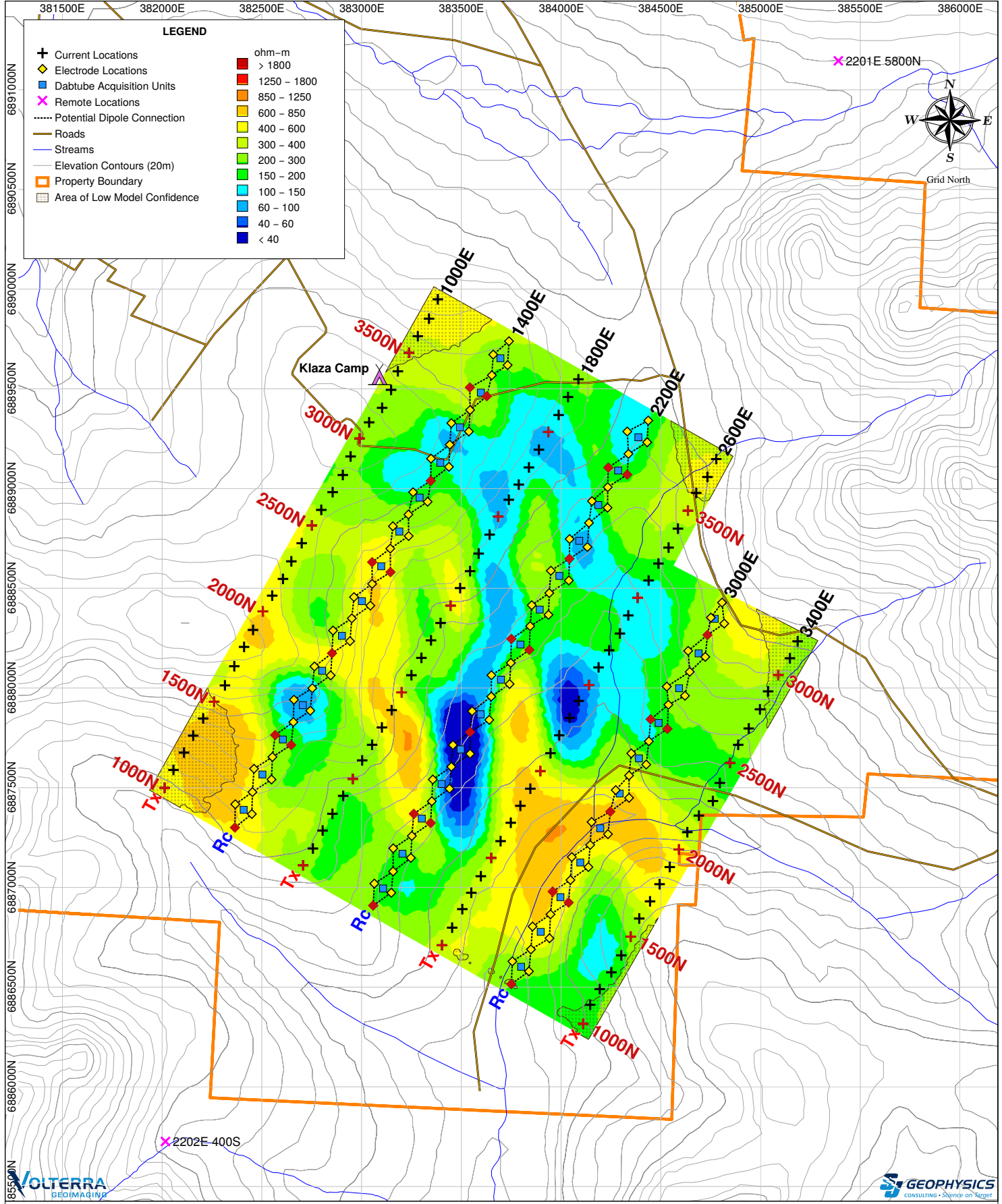
Depth: 200m Below Topography



Rockhaven Resources Ltd.

Klaza Property

Yukon Territory, Canada



Project Information:
 Survey by: SJ Geophysics Ltd.
 Survey Type: Voltterra-3DIP
 Survey Date: June 2016
 Inversion by: SJ Geophysics Ltd.
 Inversion Software: UBC-GIF DCIP3D

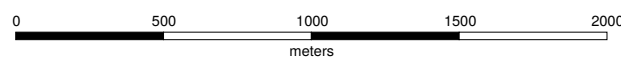
Instrumentation:
 Receiver: Voltterra 24-bit Four Channel Acquisition Units
 Transmitter: GDD TX II
 Array Type: Distributed 3DIP

Mapping Information:
 Datum: NAD83
 Projection: UTM Zone 8N
 Inversion Model: dcin3dUTM.con
 Colour Classification: Modified Logarithmic
 Mapping Date: 18-Jul-2016

Voltterra – 3DIP Survey

Interpreted Resistivity Inversion Model (ohm-m)

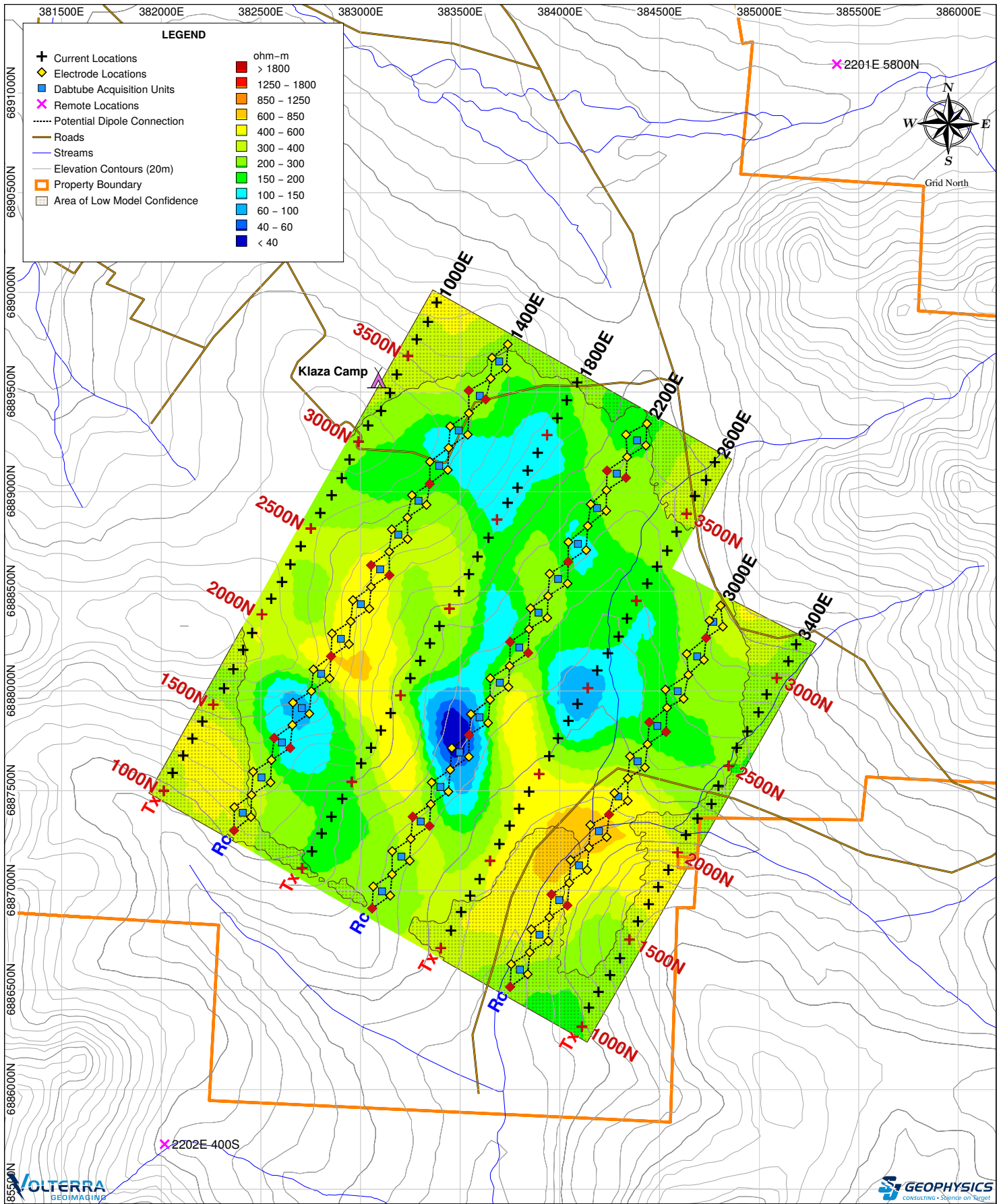
Depth: 300m Below Topography



Rockhaven Resources Ltd.

Klaza Property

Yukon Territory, Canada



Project Information:
 Survey by: SJ Geophysics Ltd.
 Survey Type: Voltterra-3DIP
 Survey Date: June 2016
 Inversion by: SJ Geophysics Ltd.
 Inversion Software: UBC-GIF DCIP3D

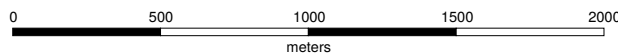
Instrumentation:
 Receiver: Voltterra 24-bit Four Channel Acquisition Units
 Transmitter: GDD TX II
 Array Type: Distributed 3DIP

Mapping Information:
 Datum: NAD83
 Projection: UTM Zone 8N
 Inversion Model: dcin3dUTM.con
 Colour Classification: Modified Logarithmic
 Mapping Date: 18-Jul-2016

Voltterra – 3DIP Survey

Interpreted Resistivity Inversion Model (ohm-m)

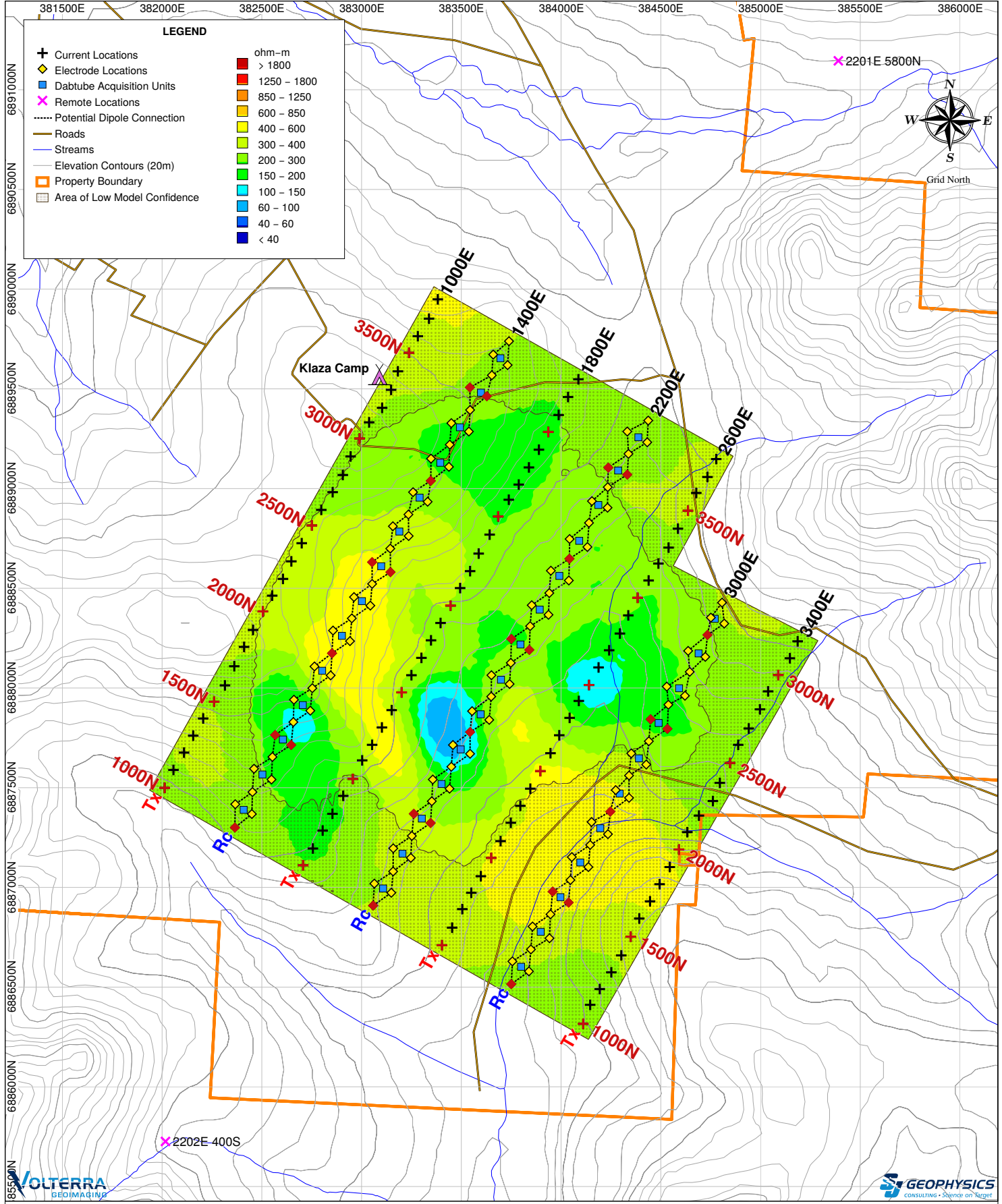
Depth: 400m Below Topography



Rockhaven Resources Ltd.

Klaza Property

Yukon Territory, Canada



Project Information:
 Survey by: SJ Geophysics Ltd.
 Survey Type: Voltterra-3DIP
 Survey Date: June 2016
 Inversion by: SJ Geophysics Ltd.
 Inversion Software: UBC-GIF DCIP3D

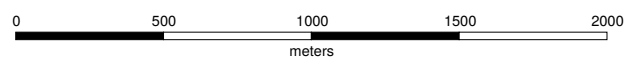
Instrumentation:
 Receiver: Voltterra 24-bit Four Channel Acquisition Units
 Transmitter: GDD TX II
 Array Type: Distributed 3DIP

Mapping Information:
 Datum: NAD83
 Projection: UTM Zone 8N
 Inversion Model: dcin3dUTM.con
 Colour Classification: Modified Logarithmic
 Mapping Date: 18-Jul-2016

Voltterra – 3DIP Survey

Interpreted Resistivity Inversion Model (ohm-m)

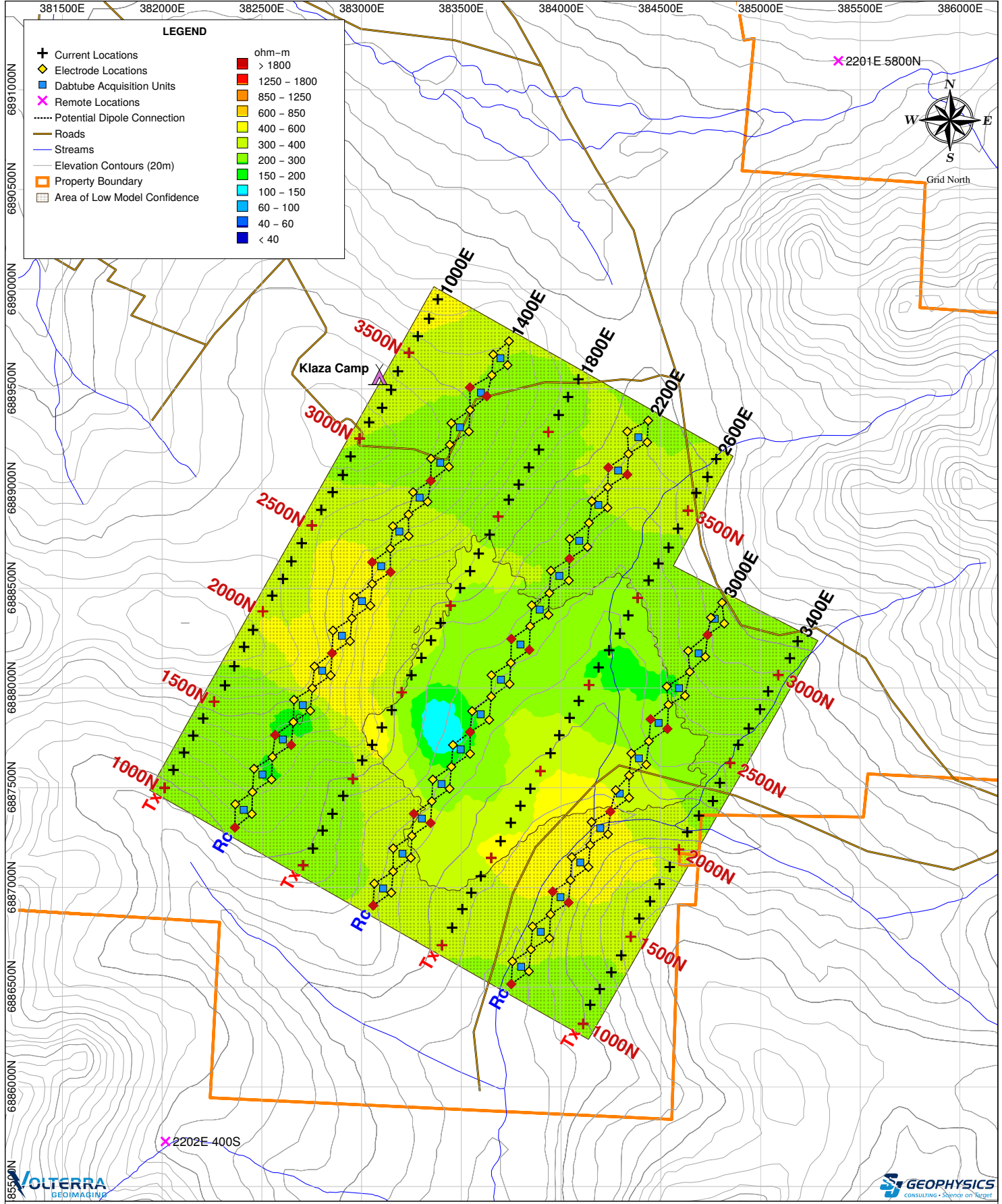
Depth: 500m Below Topography



Rockhaven Resources Ltd.

Klaza Property

Yukon Territory, Canada



LEGEND

- ✚ Current Locations
- ◆ Electrode Locations
- Dabtube Acquisition Units
- ✖ Remote Locations
- ⋯ Potential Dipole Connection
- Roads
- Streams
- Elevation Contours (20m)
- ▭ Property Boundary
- ▭ Area of Low Model Confidence

ohm-m
> 1800
1250 - 1800
850 - 1250
600 - 850
400 - 600
300 - 400
200 - 300
150 - 200
100 - 150
60 - 100
40 - 60
< 40

Project Information:
 Survey by: SJ Geophysics Ltd.
 Survey Type: Voltterra-3DIP
 Survey Date: June 2016
 Inversion by: SJ Geophysics Ltd.
 Inversion Software: UBC-GIF DCIP3D

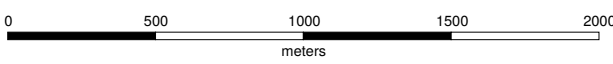
Instrumentation:
 Receiver: Voltterra 24-bit Four Channel Acquisition Units
 Transmitter: GDD TX II
 Array Type: Distributed 3DIP

Mapping Information:
 Datum: NAD83
 Projection: UTM Zone 8N
 Inversion Model: dcin3dUTM.con
 Colour Classification: Modified Logarithmic
 Mapping Date: 18-Jul-2016

Voltterra – 3DIP Survey

Interpreted Resistivity Inversion Model (ohm-m)

Depth: 600m Below Topography



Rockhaven Resources Ltd.

Klaza Property

Yukon Territory, Canada