

Project Information:
 Survey by: SJ Geophysics Ltd.
 Survey Type: Voltterra-3DIP
 Survey Date: June 2016
 Inversion by: SJ Geophysics Ltd.
 Inversion Software: UBC-GIF DCIP3D

Instrumentation:
 Receiver: Voltterra 24-bit Four Channel Acquisition Units
 Transmitter: GDD TX II
 Array Type: Distributed 3DIP

Mapping Information:
 Datum: NAD83
 Projection: UTM Zone 8N
 Inversion Model: ipinv3dUTM.chg
 Colour Classification: Modified Linear
 Mapping Date: 18-Jul-2016

Voltterra – 3DIP Survey

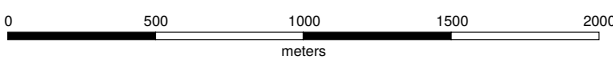
Rockhaven Resources Ltd.

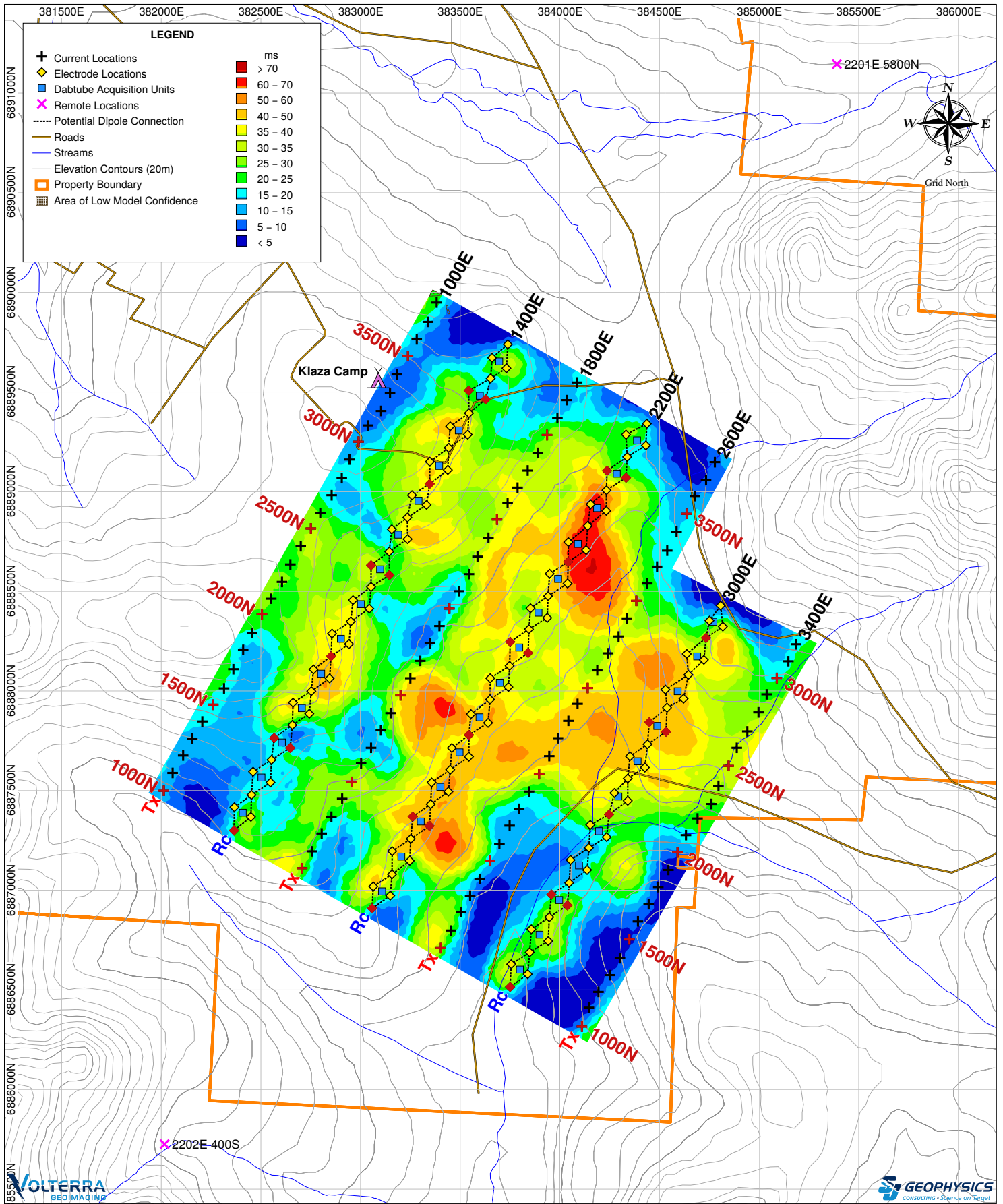
Interpreted Chargeability Inversion Model (ms)

Klaza Property

Depth: 50m Below Topography

Yukon Territory, Canada





Project Information:
 Survey by: SJ Geophysics Ltd.
 Survey Type: Volterra-3DIP
 Survey Date: June 2016
 Inversion by: SJ Geophysics Ltd.
 Inversion Software: UBC-GIF DCIP3D

Instrumentation:
 Receiver: Voltterra 24-bit Four Channel Acquisition Units
 Transmitter: GDD TX II
 Array Type: Distributed 3DIP

Mapping Information:
 Datum: NAD83
 Projection: UTM Zone 8N
 Inversion Model: ipinv3dUTM.chg
 Colour Classification: Modified Linear
 Mapping Date: 18-Jul-2016

Volterra – 3DIP Survey

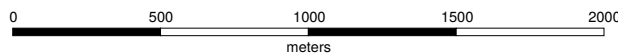
Rockhaven Resources Ltd.

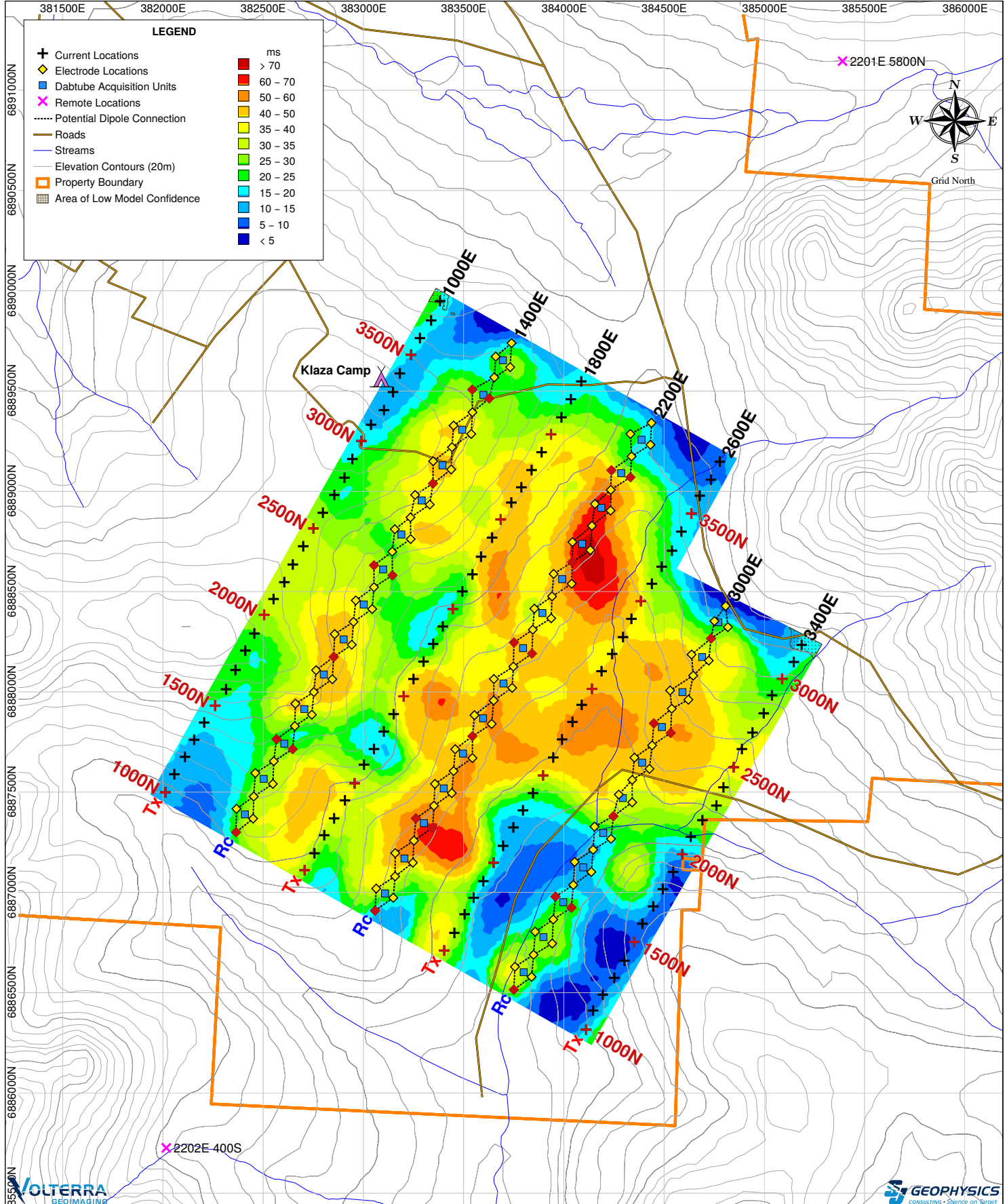
Interpreted Chargeability Inversion Model (ms)

Klaza Property

Depth: 100m Below Topography

Yukon Territory, Canada





Project Information:
 Survey by: SJ Geophysics Ltd.
 Survey Type: Voltterra-3DIP
 Survey Date: June 2016
 Inversion by: SJ Geophysics Ltd.
 Inversion Software: UBC-GIF DCIP3D

Instrumentation:
 Receiver: Voltterra 24-bit Four Channel Acquisition Units
 Transmitter: GDD TX II
 Array Type: Distributed 3DIP

Mapping Information:
 Datum: NAD83
 Projection: UTM Zone 8N
 Inversion Model: ipinv3dUTM.chg
 Colour Classification: Modified Linear
 Mapping Date: 18-Jul-2016

Voltterra – 3DIP Survey

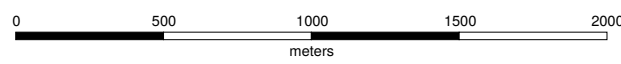
Rockhaven Resources Ltd.

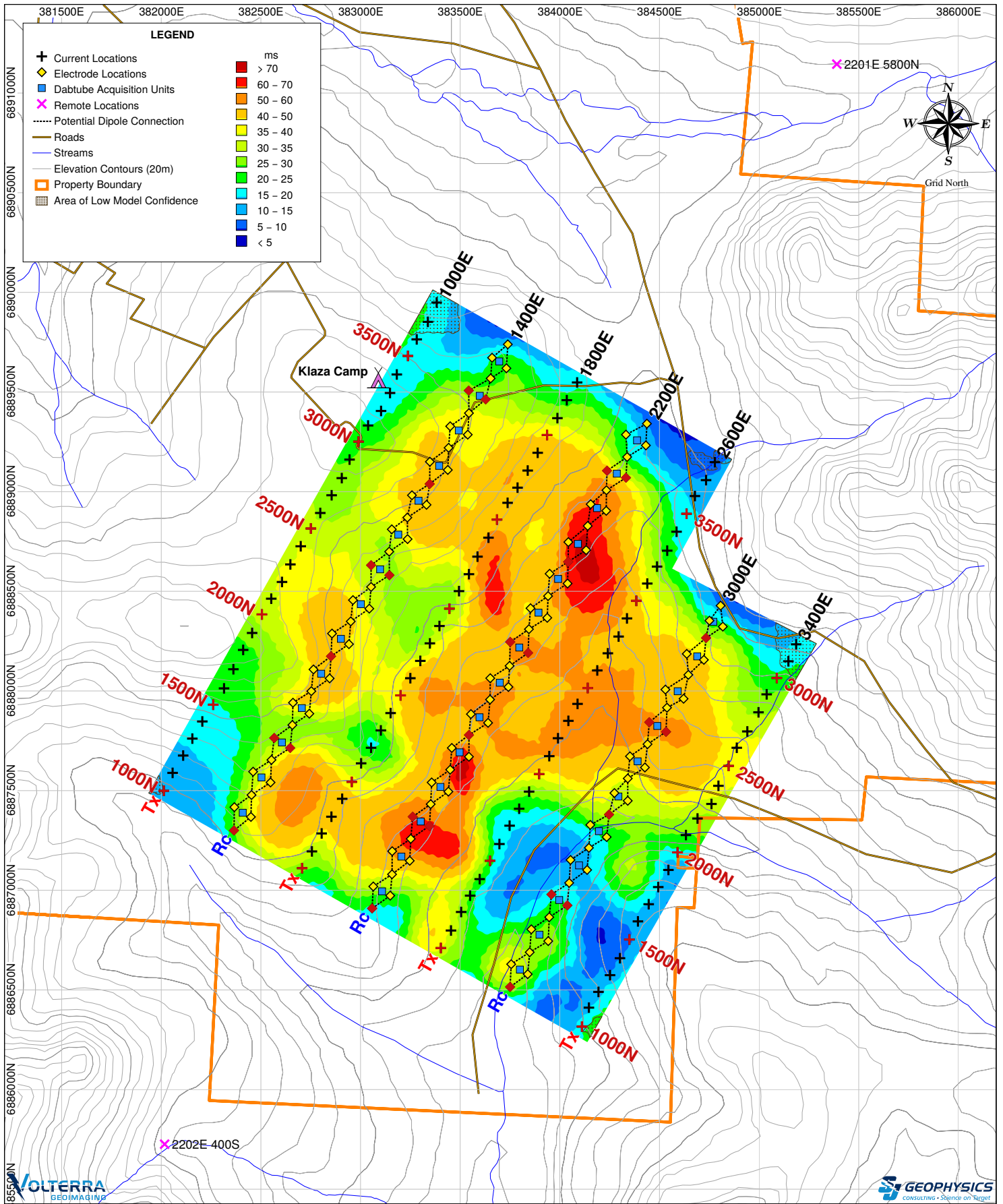
Interpreted Chargeability Inversion Model (ms)

Klaza Property

Depth: 150m Below Topography

Yukon Territory, Canada





Project Information:
 Survey by: SJ Geophysics Ltd.
 Survey Type: Volterra-3DIP
 Survey Date: June 2016
 Inversion by: SJ Geophysics Ltd.
 Inversion Software: UBC-GIF DCIP3D

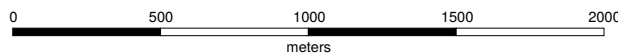
Instrumentation:
 Receiver: Voltterra 24-bit Four Channel Acquisition Units
 Transmitter: GDD TX II
 Array Type: Distributed 3DIP

Mapping Information:
 Datum: NAD83
 Projection: UTM Zone 8N
 Inversion Model: ipinv3dUTM.chg
 Colour Classification: Modified Linear
 Mapping Date: 18-Jul-2016

Volterra – 3DIP Survey

Interpreted Chargeability Inversion Model (ms)

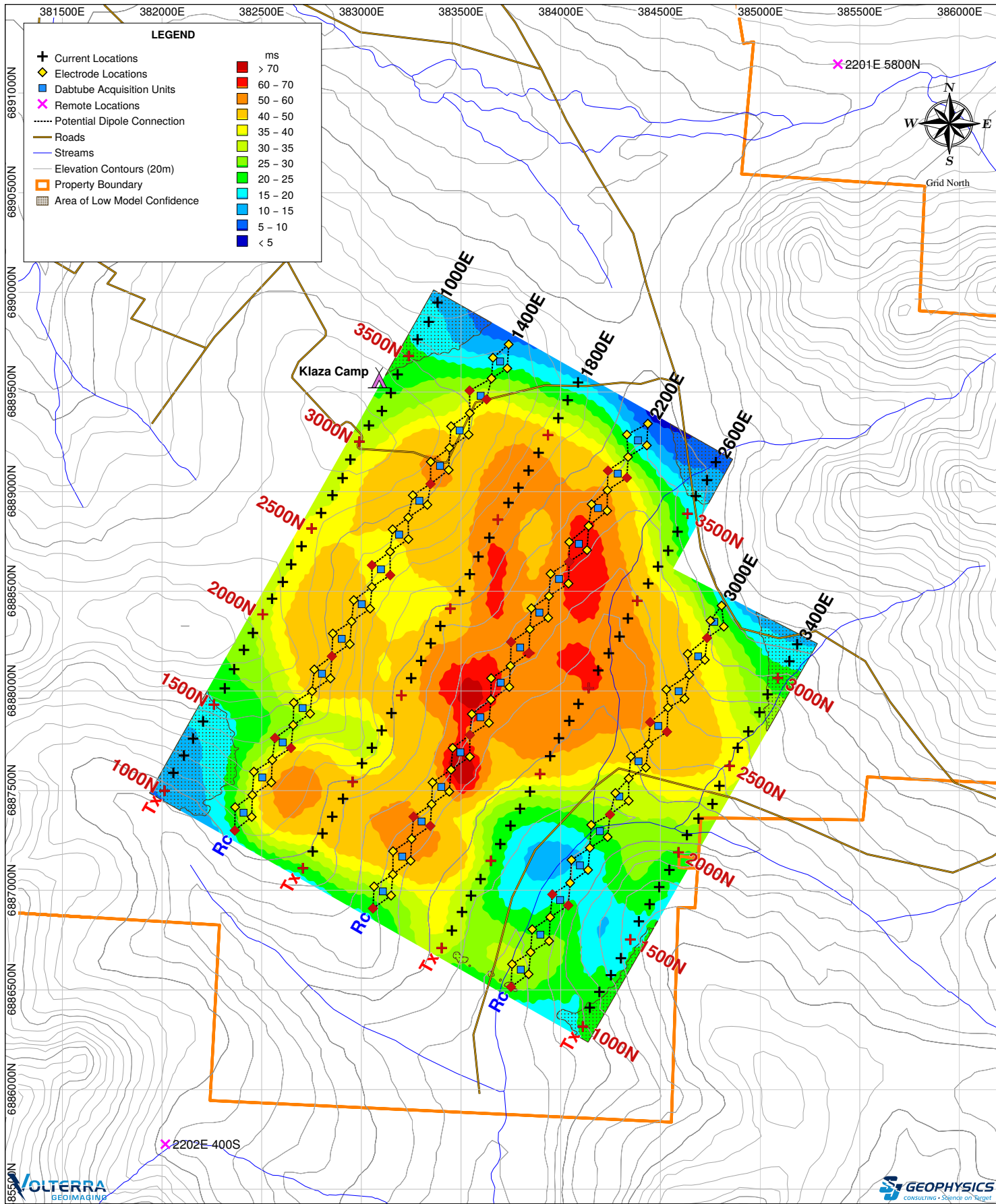
Depth: 200m Below Topography



Rockhaven Resources Ltd.

Klaza Property

Yukon Territory, Canada



Project Information:
 Survey by: SJ Geophysics Ltd.
 Survey Type: Voltterra-3DIP
 Survey Date: June 2016
 Inversion by: SJ Geophysics Ltd.
 Inversion Software: UBC-GIF DCIP3D

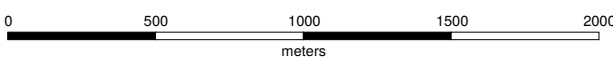
Instrumentation:
 Receiver: Voltterra 24-bit Four Channel Acquisition Units
 Transmitter: GDD TX II
 Array Type: Distributed 3DIP

Mapping Information:
 Datum: NAD83
 Projection: UTM Zone 8N
 Inversion Model: ipinv3dUTM.chg
 Colour Classification: Modified Linear
 Mapping Date: 18-Jul-2016

Voltterra – 3DIP Survey

Interpreted Chargeability Inversion Model (ms)

Depth: 300m Below Topography

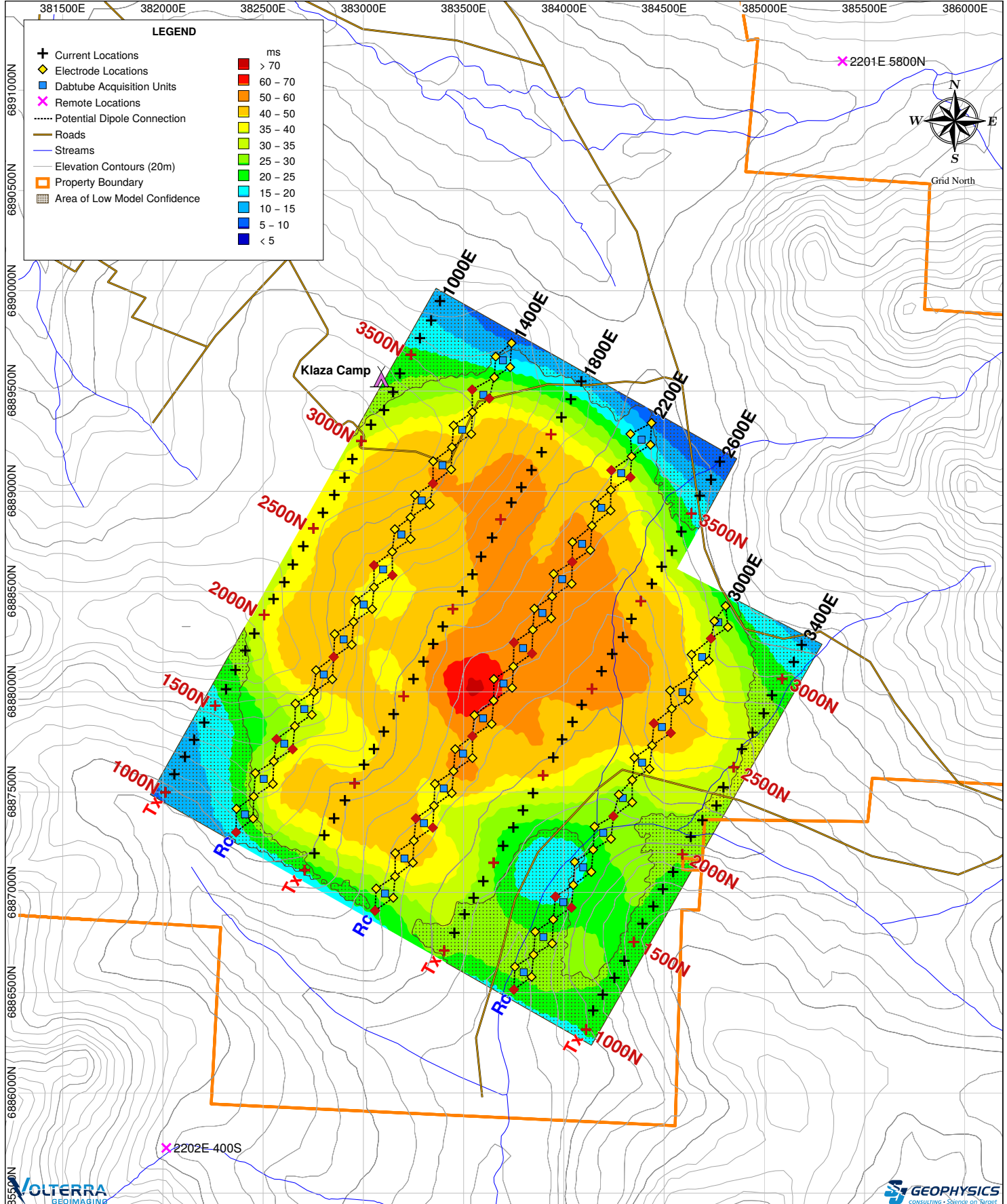


Rockhaven Resources Ltd.

Klaza Property

Yukon Territory, Canada





Project Information:
 Survey by: SJ Geophysics Ltd.
 Survey Type: Voltterra-3DIP
 Survey Date: June 2016
 Inversion by: SJ Geophysics Ltd.
 Inversion Software: UBC-GIF DCIP3D

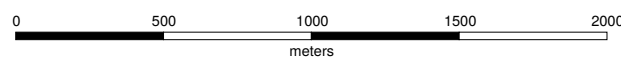
Instrumentation:
 Receiver: Voltterra 24-bit Four Channel Acquisition Units
 Transmitter: GDD TX II
 Array Type: Distributed 3DIP

Mapping Information:
 Datum: NAD83
 Projection: UTM Zone 8N
 Inversion Model: ipinv3dUTM.chg
 Colour Classification: Modified Linear
 Mapping Date: 18-Jul-2016

Voltterra – 3DIP Survey

Interpreted Chargeability Inversion Model (ms)

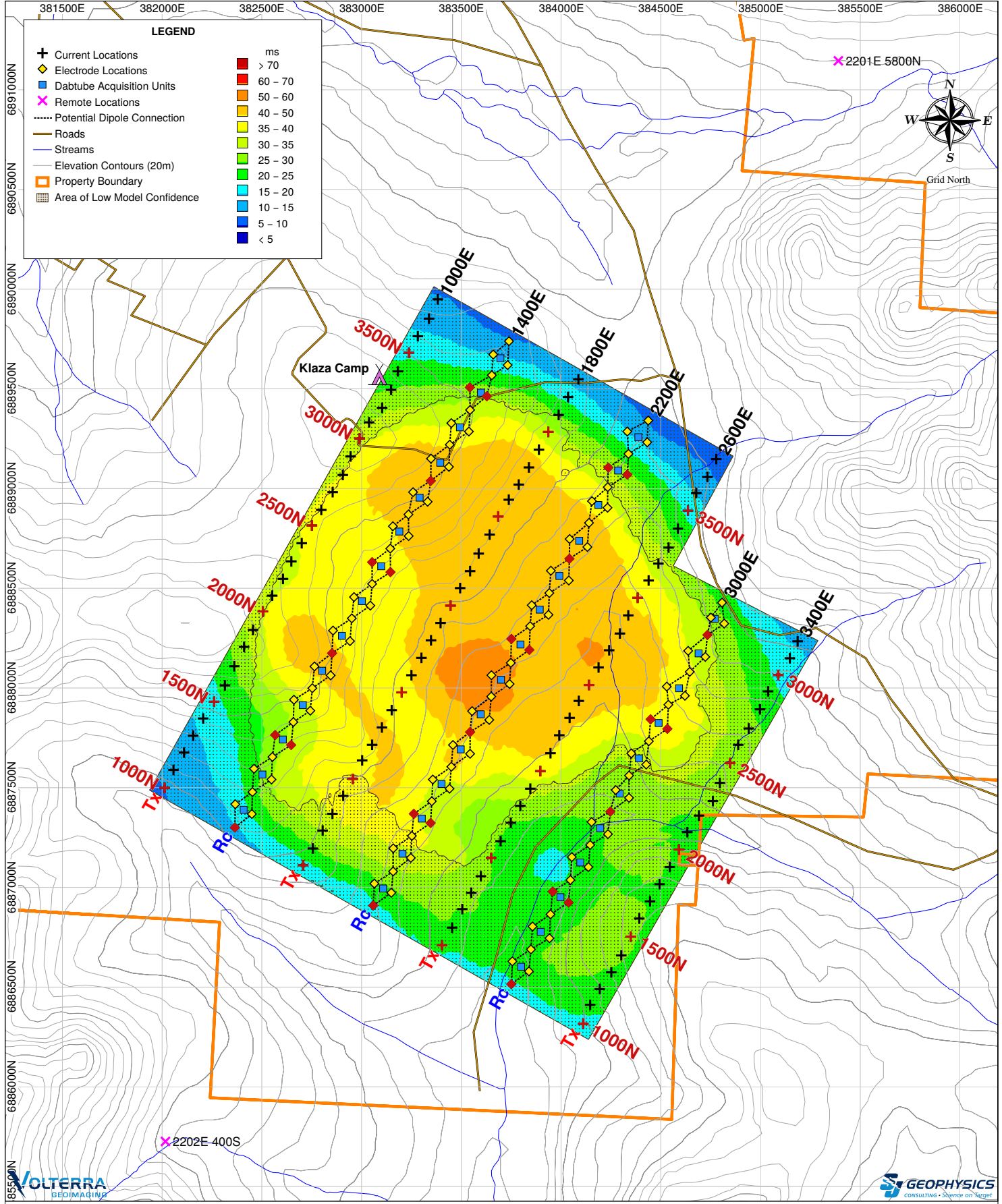
Depth: 400m Below Topography



Rockhaven Resources Ltd.

Klaza Property

Yukon Territory, Canada



Project Information:
 Survey by: SJ Geophysics Ltd.
 Survey Type: Voltterra-3DIP
 Survey Date: June 2016
 Inversion by: SJ Geophysics Ltd.
 Inversion Software: UBC-GIF DCIP3D

Instrumentation:
 Receiver: Voltterra 24-bit Four Channel Acquisition Units
 Transmitter: GDD TX II
 Array Type: Distributed 3DIP

Mapping Information:
 Datum: NAD83
 Projection: UTM Zone 8N
 Inversion Model: ipinv3dUTM.chg
 Colour Classification: Modified Linear
 Mapping Date: 18-Jul-2016

Voltterra – 3DIP Survey

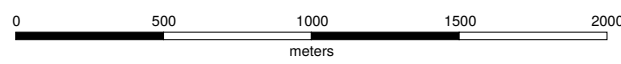
Rockhaven Resources Ltd.

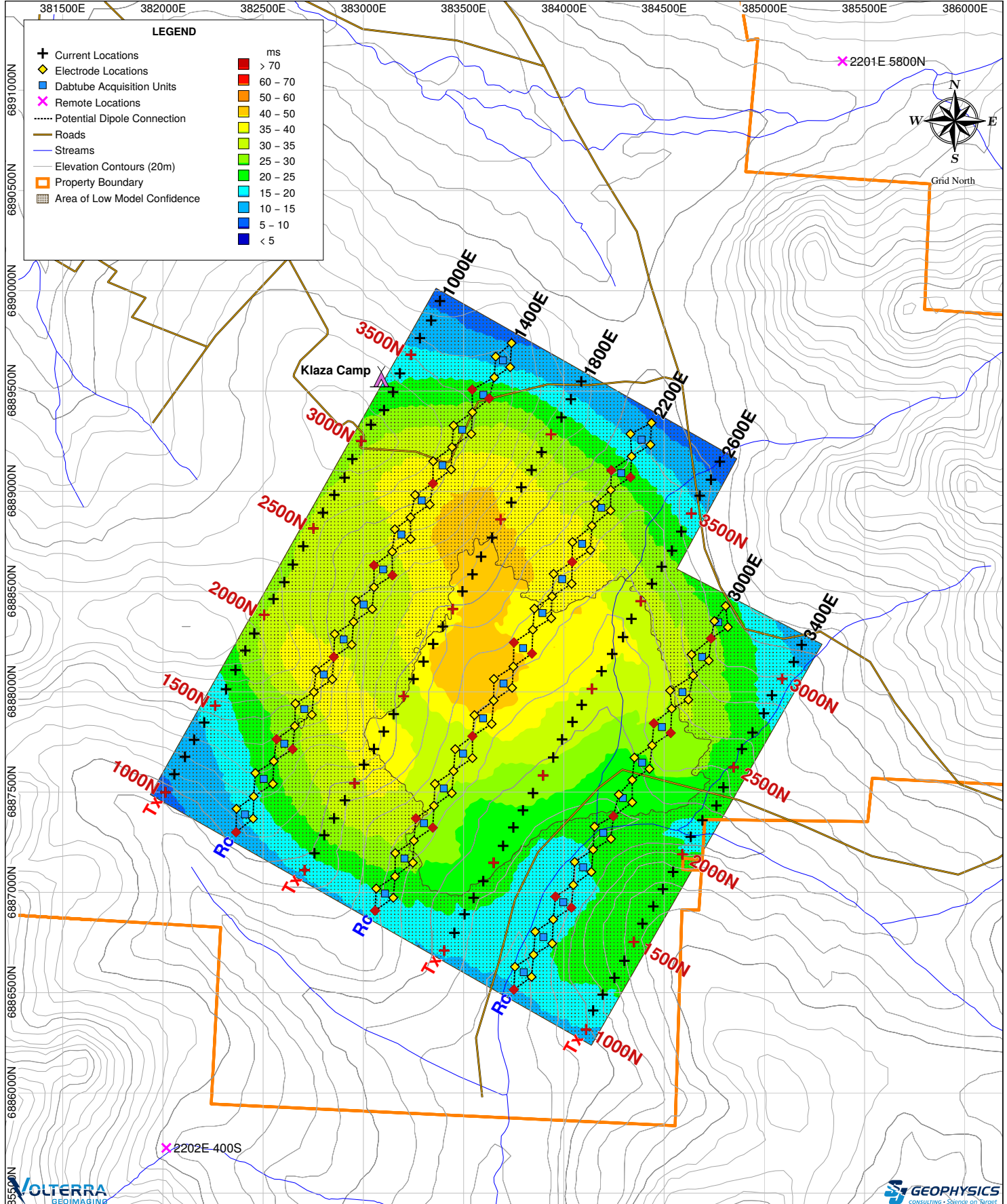
Interpreted Chargeability Inversion Model (ms)

Klaza Property

Depth: 500m Below Topography

Yukon Territory, Canada





Project Information:
 Survey by: SJ Geophysics Ltd.
 Survey Type: Voltterra-3DIP
 Survey Date: June 2016
 Inversion by: SJ Geophysics Ltd.
 Inversion Software: UBC-GIF DCIP3D

Instrumentation:
 Receiver: Voltterra 24-bit Four Channel Acquisition Units
 Transmitter: GDD TX II
 Array Type: Distributed 3DIP

Mapping Information:
 Datum: NAD83
 Projection: UTM Zone 8N
 Inversion Model: ipinv3dUTM.chg
 Colour Classification: Modified Linear
 Mapping Date: 18-Jul-2016

Volterra – 3DIP Survey

Rockhaven Resources Ltd.

Interpreted Chargeability Inversion Model (ms)

Klaza Property

Depth: 600m Below Topography

Yukon Territory, Canada

