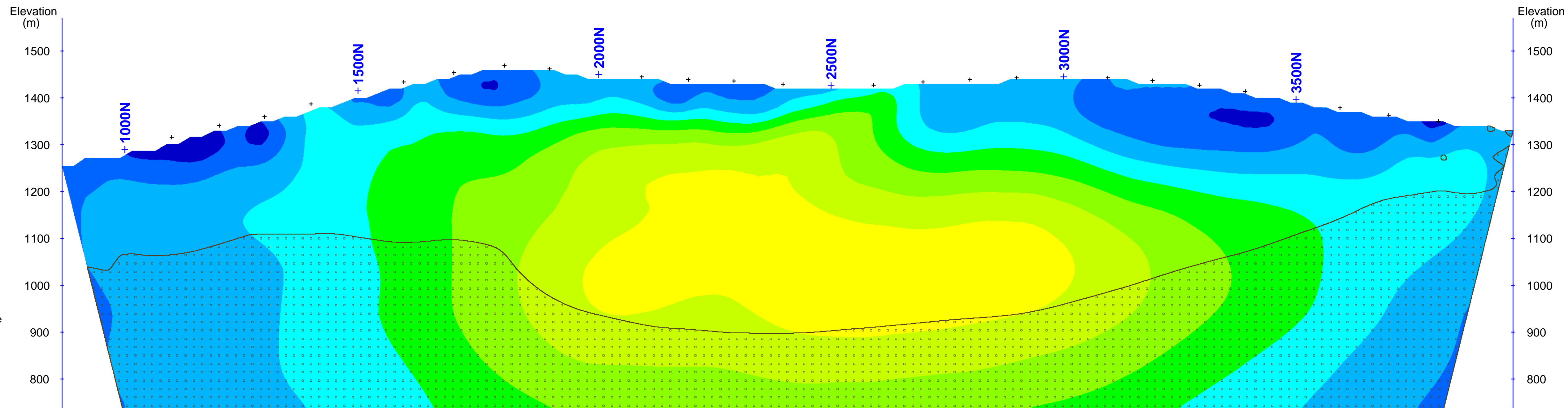
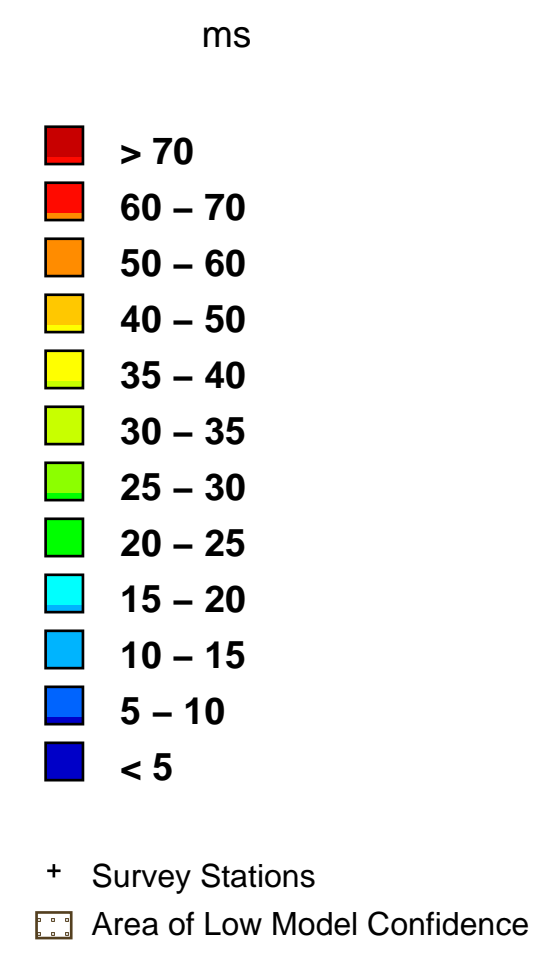
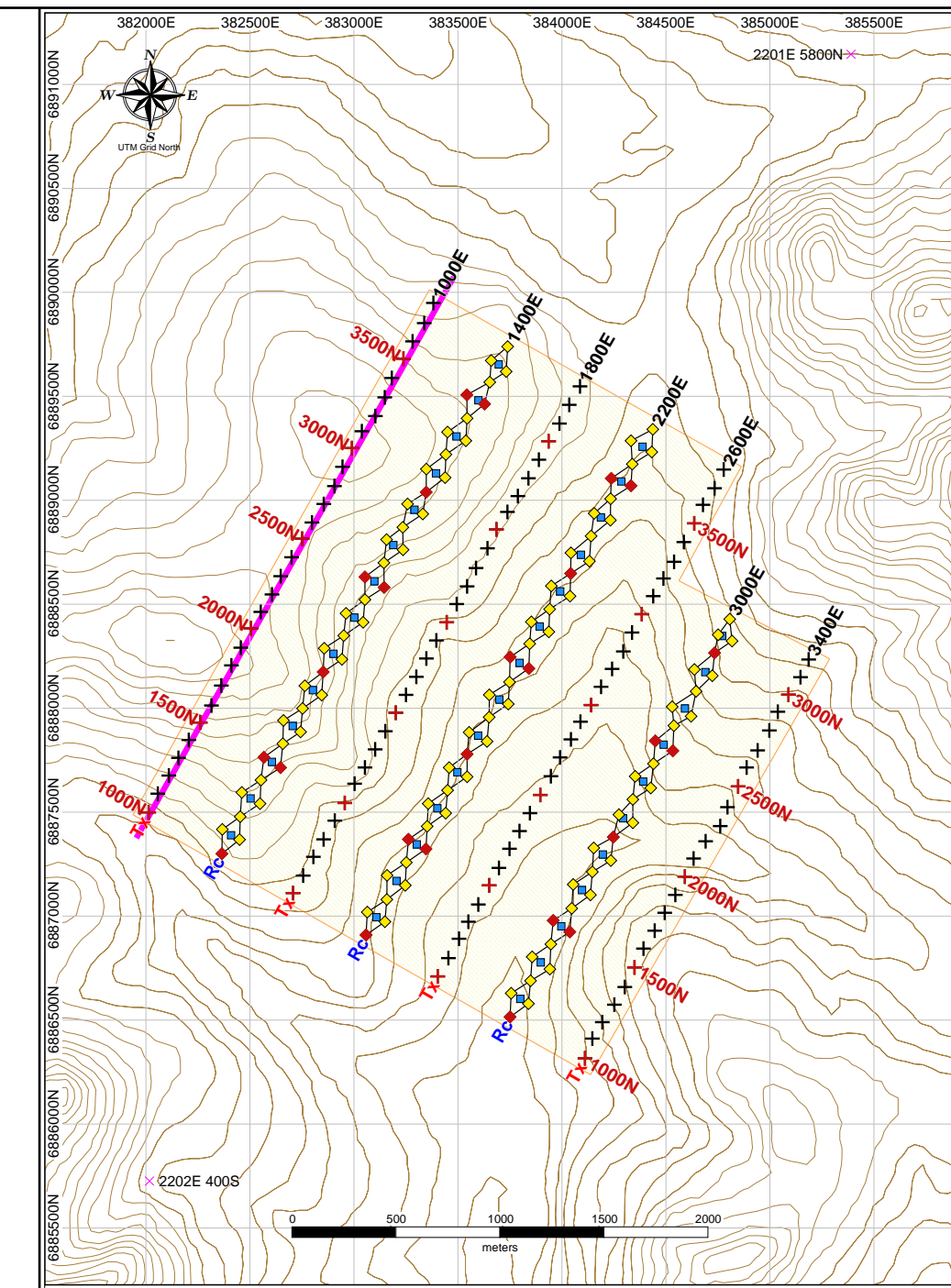


Interpreted Resistivity (ohm-m)



Interpreted Chargeability (ms)



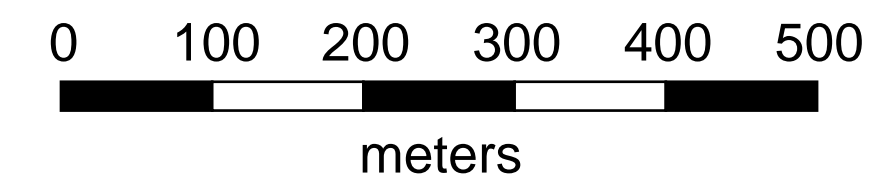
INDEX MAP: 1000E

Project Information:
 Survey by: SJ Geophysics Ltd.
 Survey Type: Volterra-3DIP
 Survey Date: June 2016
 Inversion by: SJ Geophysics Ltd.
 Inversion Software: UBC-GIF DCIP3D

Instrumentation:
 Receiver: Volterra 24-bit Four Channel Acquisition Units
 Transmitter: GDD TX II
 Array Type: Distributed 3DIP

Mapping Information:
 Index Map Datum: NAD83
 Index Map Projection: UTM Zone 8N
 Section Map Projection: Local Coordinate System
 Chargeability Inversion Model: ipinv3dUTM.chg
 Resistivity Inversion Model: dcinvt3dUTM.con
 Mapping Date: 18-Jul-2016

Colour Classification:
 Resistivity: Modified Logarithmic
 Chargeability: Modified Linear



Rockhaven Resources Ltd.

Klaza Property

Yukon Territory, Canada

Volterra - 3DIP Survey

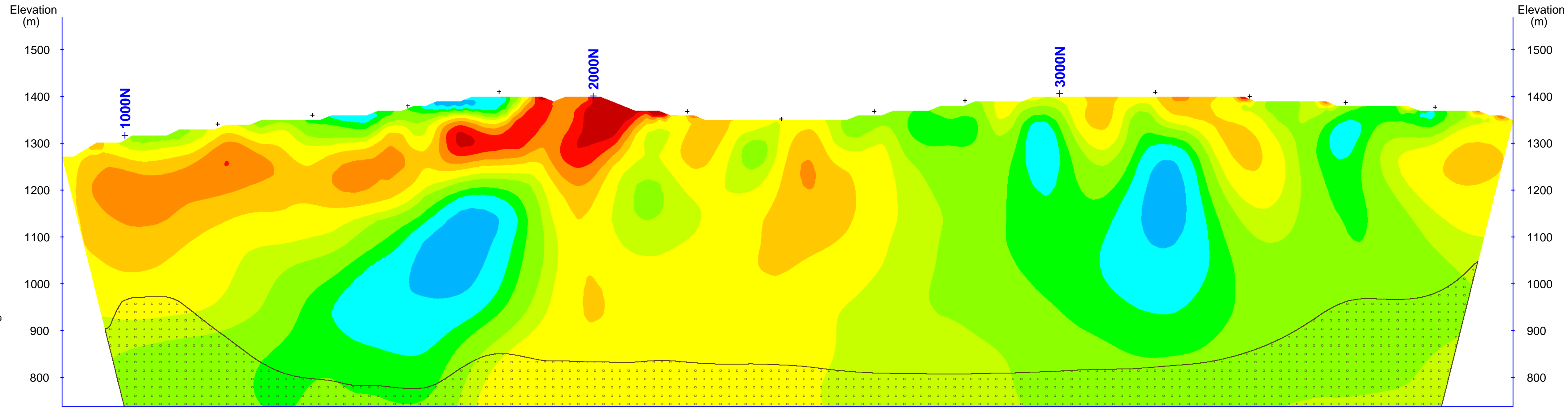
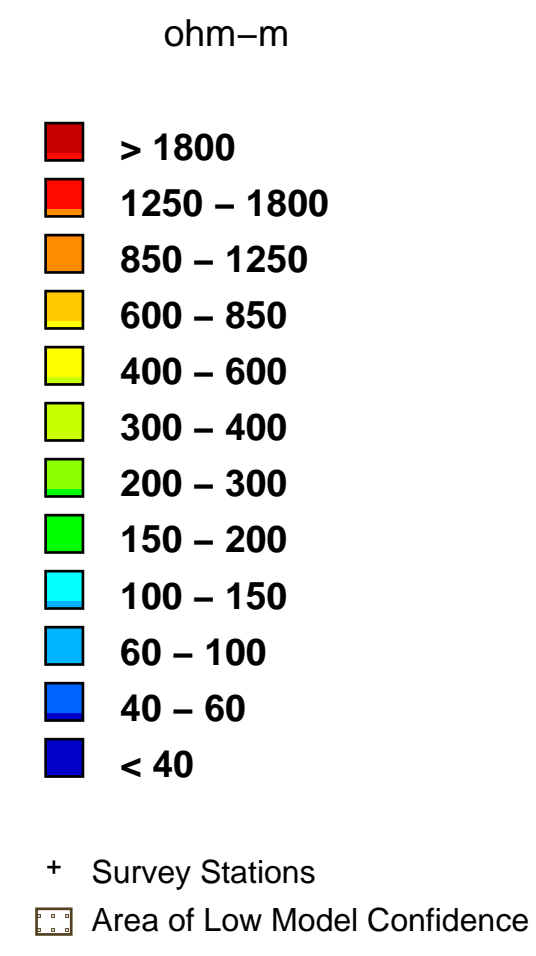
3D Inversion Models

of

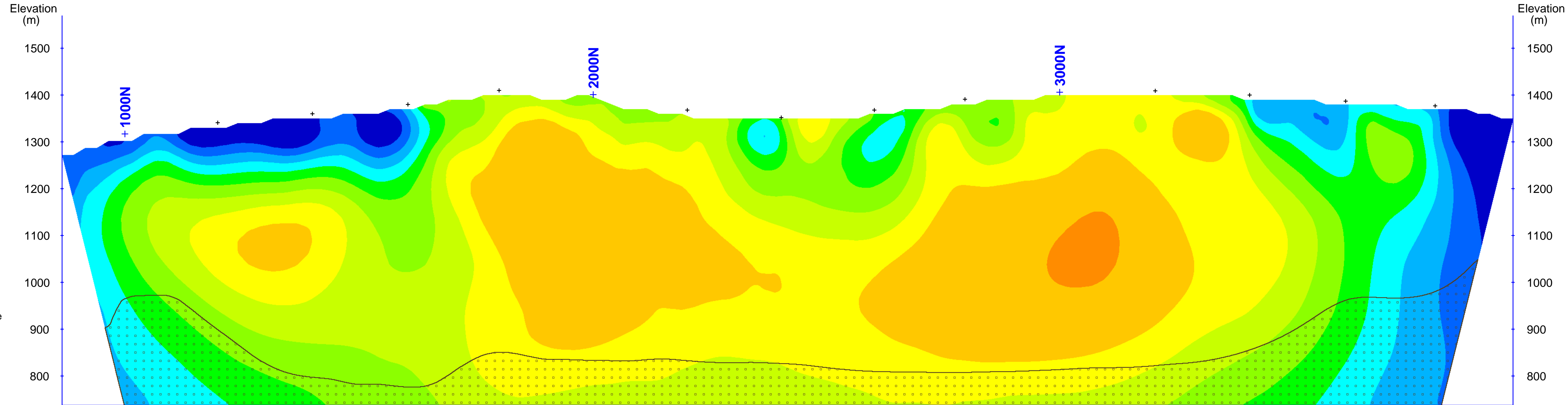
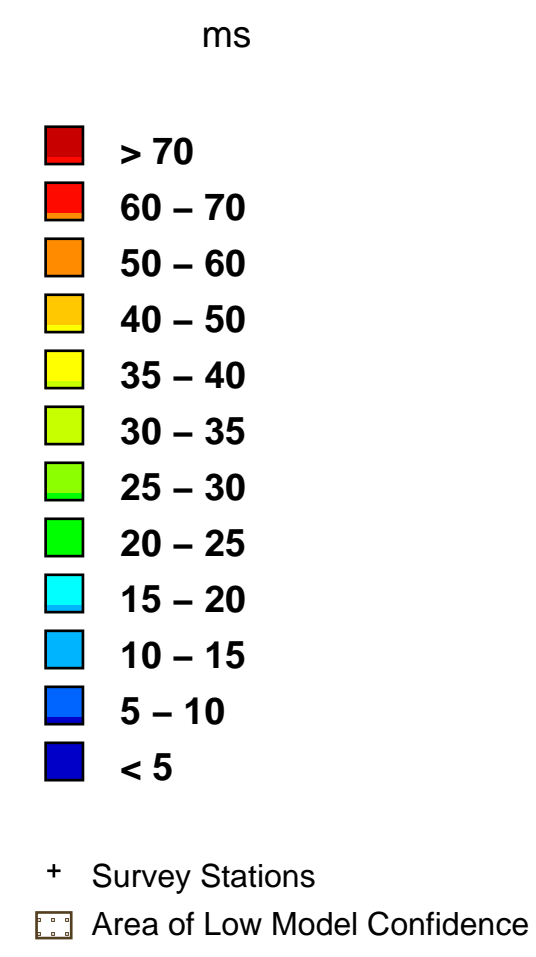
Interpreted

Resistivity & Chargeability

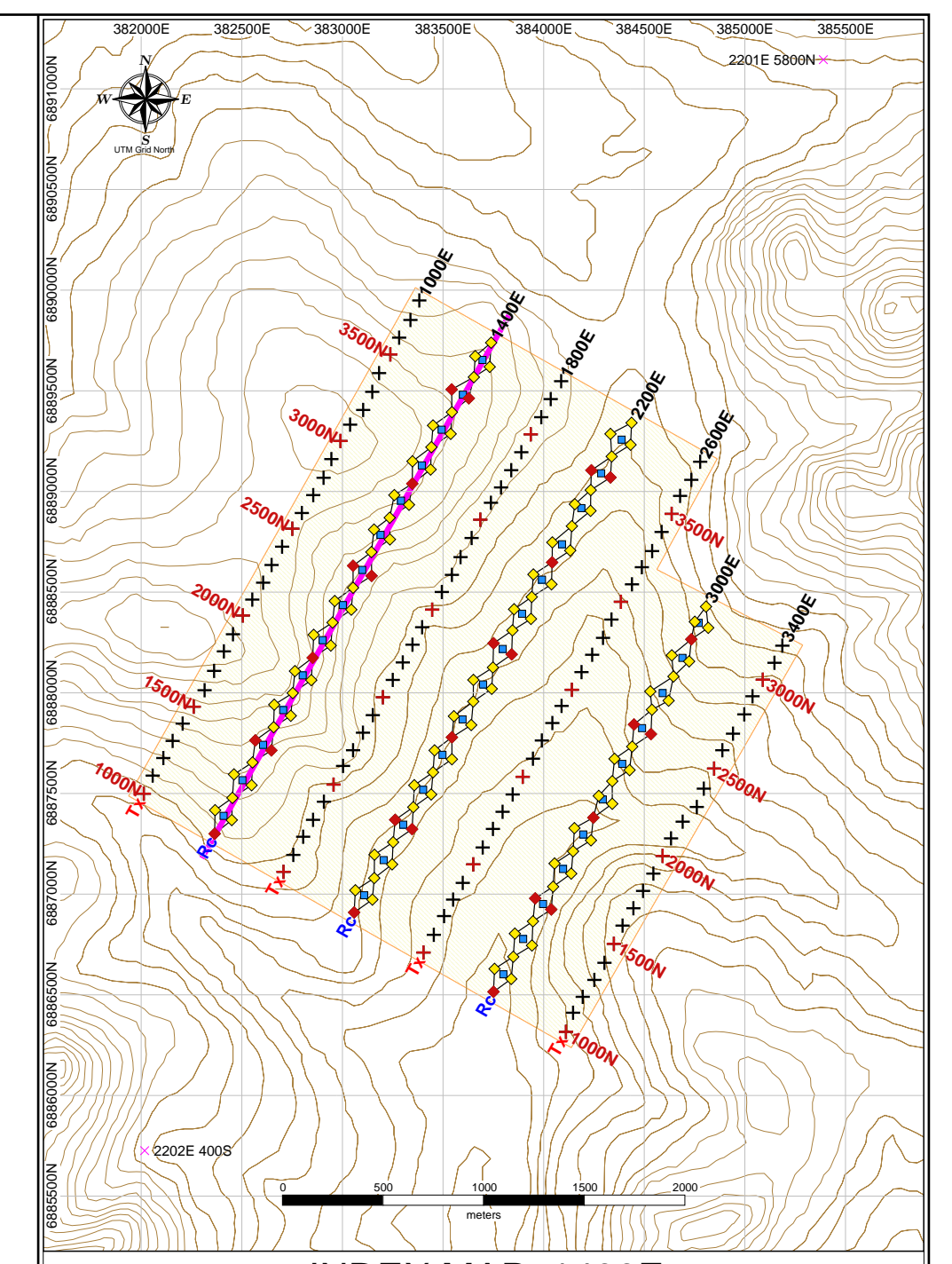
Cross Section: 1000E



Interpreted Resistivity (ohm-m)



Interpreted Chargeability (ms)



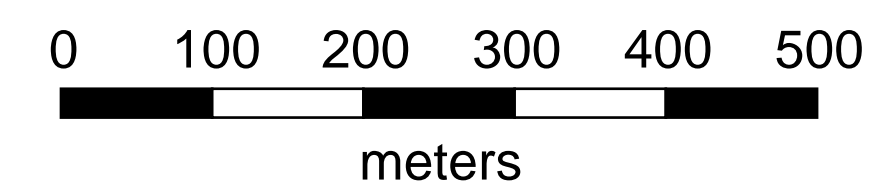
INDEX MAP: 1400E

Project Information:
 Survey by: SJ Geophysics Ltd.
 Survey Type: Volterra-3DIP
 Survey Date: June 2016
 Inversion by: SJ Geophysics Ltd.
 Inversion Software: UBC-GIF DCIP3D

Instrumentation:
 Receiver: Volterra 24-bit Four Channel Acquisition Units
 Transmitter: GDD TX II
 Array Type: Distributed 3DIP

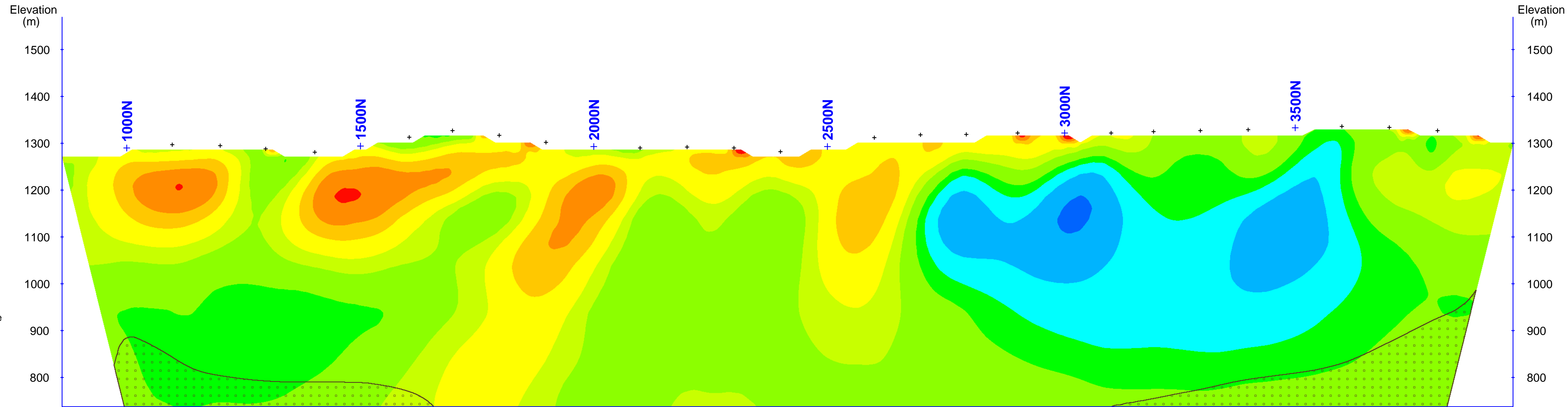
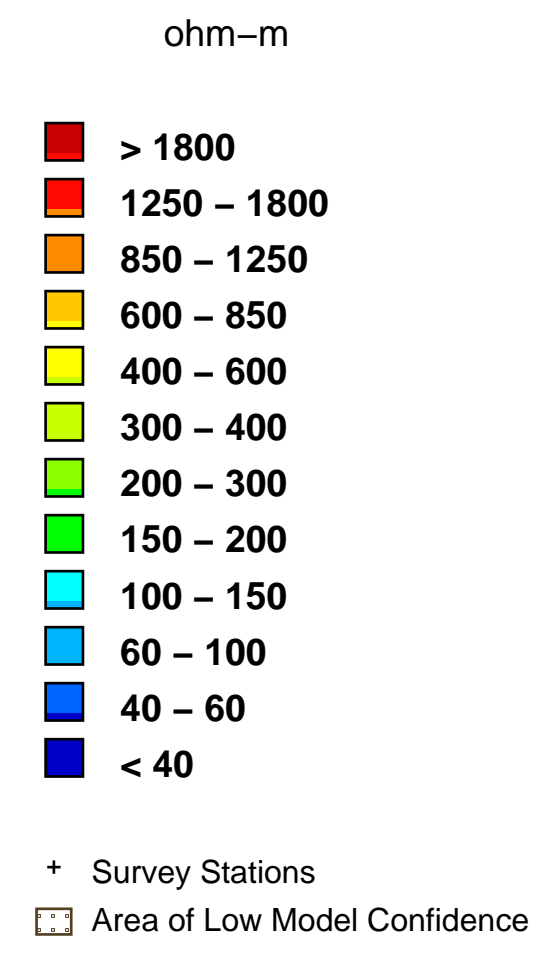
Mapping Information:
 Index Map Datum: NAD83
 Index Map Projection: UTM Zone 8N
 Section Map Projection: Local Coordinate System
 Chargeability Inversion Model: ipinv3dUTM.chg
 Resistivity Inversion Model: dcin3dUTM.con
 Mapping Date: 18-Jul-2016

Colour Classification:
 Resistivity: Modified Logarithmic
 Chargeability: Modified Linear

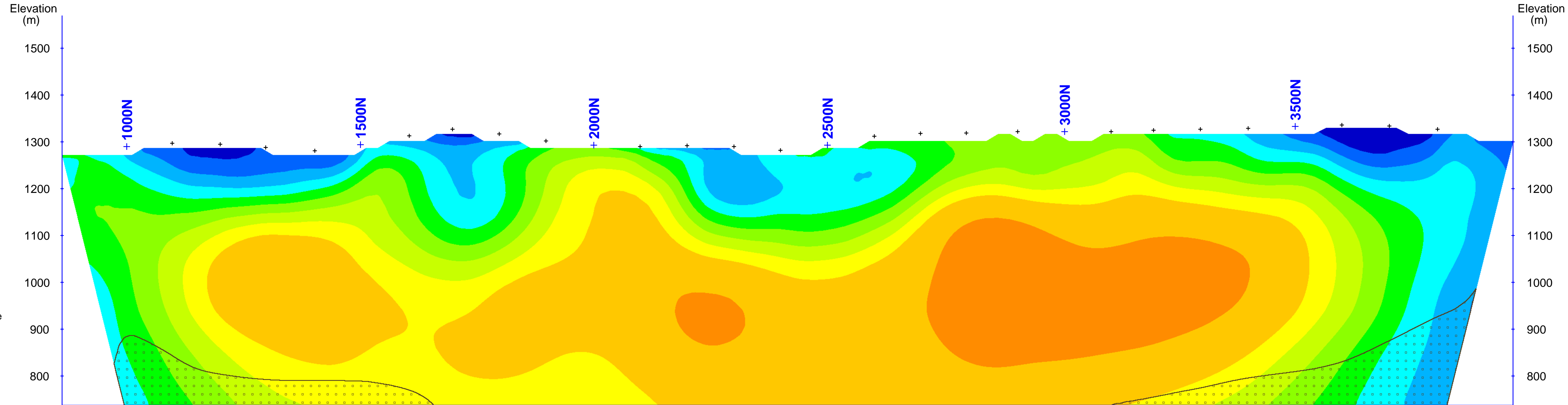
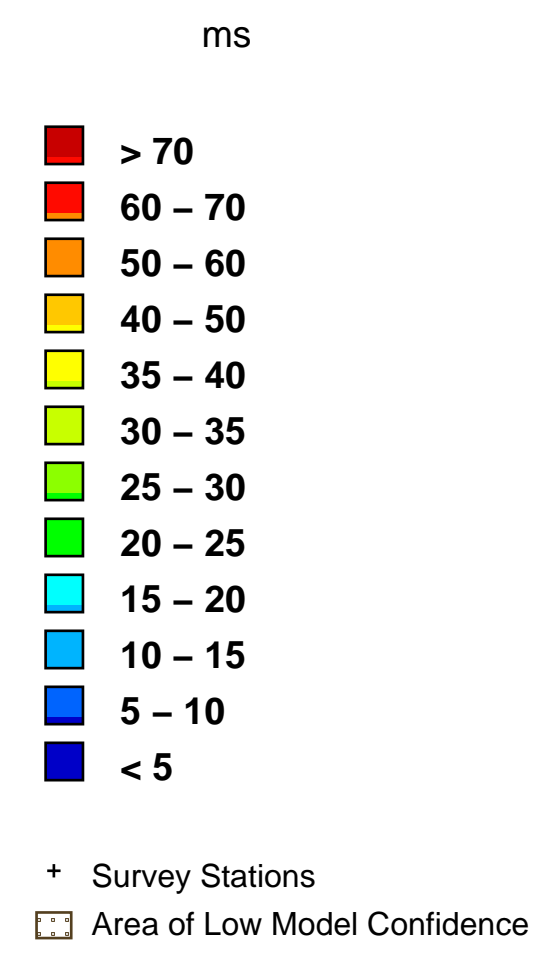


Rockhaven Resources Ltd.
Klaza Property
 Yukon Territory, Canada

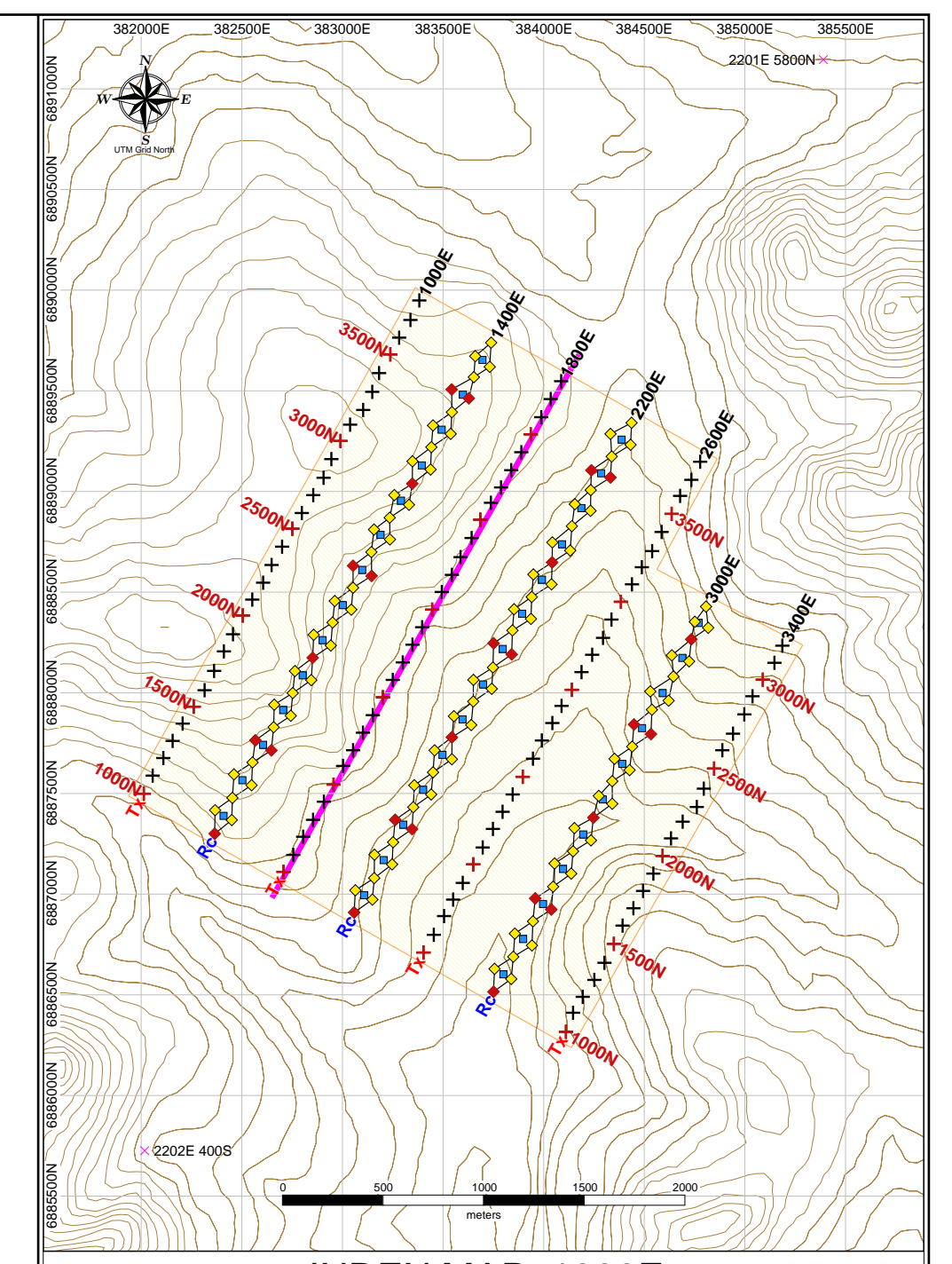
Volterra - 3DIP Survey
3D Inversion Models
 of
Interpreted
Resistivity & Chargeability
 Cross Section: 1400E



Interpreted Resistivity (ohm-m)



Interpreted Chargeability (ms)

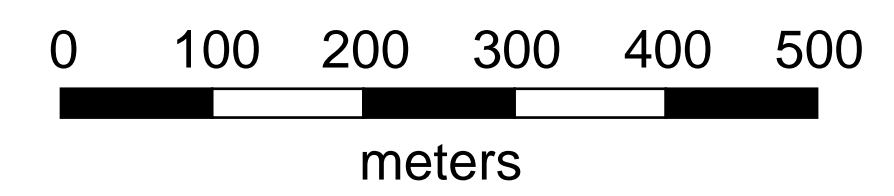


Project Information:
 Survey by: SJ Geophysics Ltd.
 Survey Type: Volterra-3DIP
 Survey Date: June 2016
 Inversion by: SJ Geophysics Ltd.
 Inversion Software: UBC-GIF DCIP3D

Instrumentation:
 Receiver: Volterra 24-bit Four Channel Acquisition Units
 Transmitter: GDD TX II
 Array Type: Distributed 3DIP

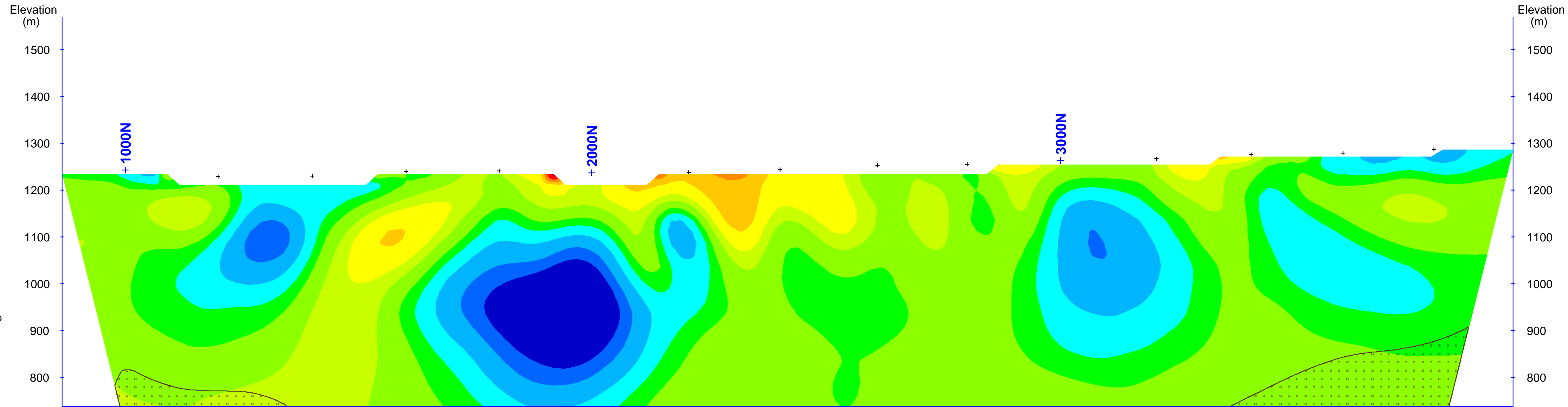
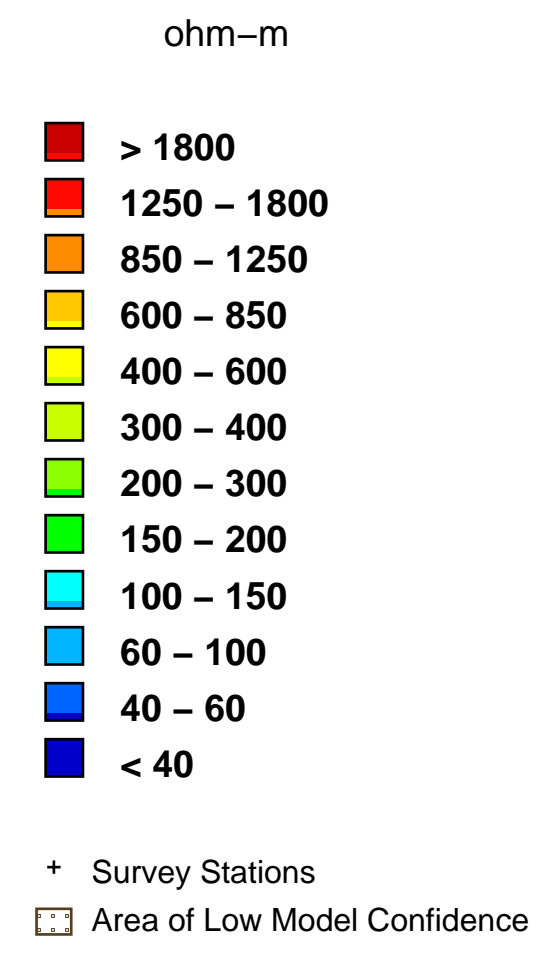
Mapping Information:
 Index Map Datum: NAD83
 Index Map Projection: UTM Zone 8N
 Section Map Projection: Local Coordinate System
 Chargeability Inversion Model: ipinv3dUTM.chg
 Resistivity Inversion Model: dcinv3dUTM.con
 Mapping Date: 18-Jul-2016

Colour Classification:
 Resistivity: Modified Logarithmic
 Chargeability: Modified Linear

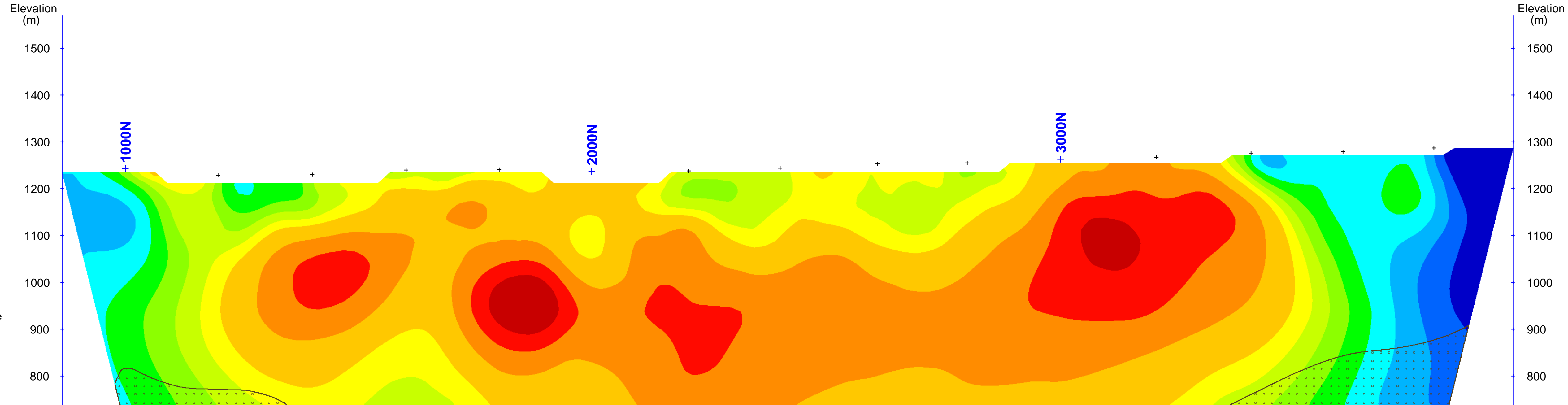
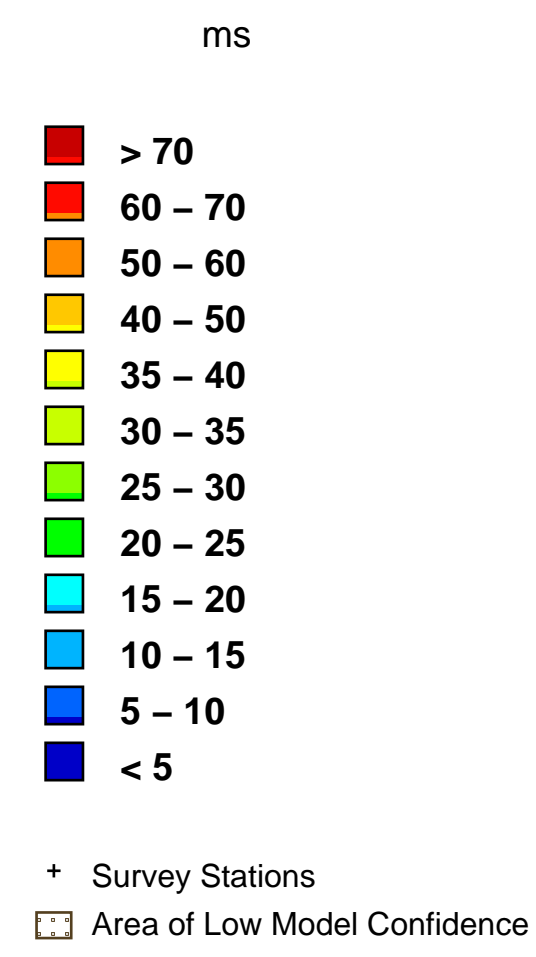


Rockhaven Resources Ltd.
Klaza Property
 Yukon Territory, Canada

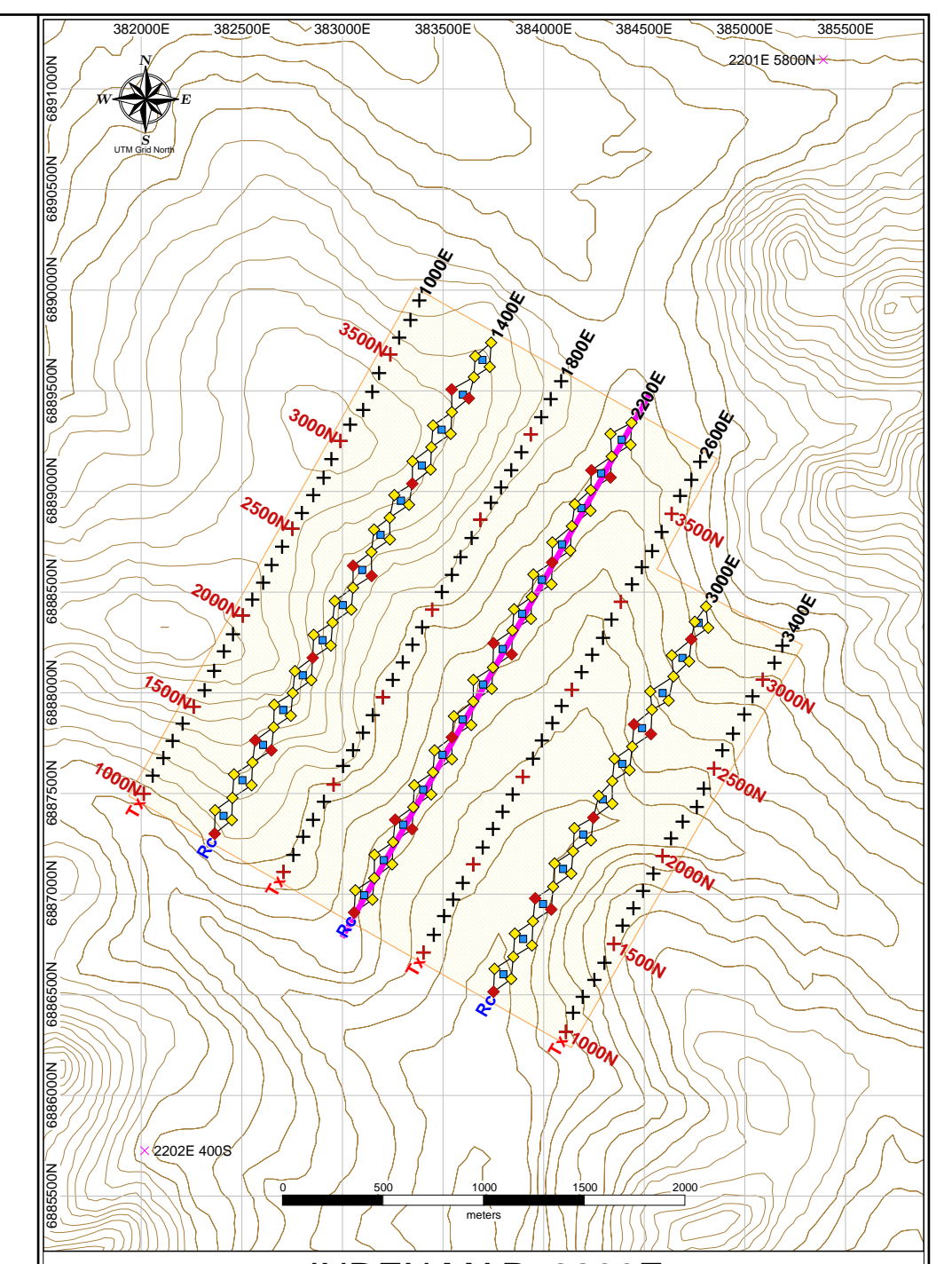
Volterra - 3DIP Survey
3D Inversion Models
 of
Interpreted
Resistivity & Chargeability
 Cross Section: 1800E



Interpreted Resistivity (ohm-m)



Interpreted Chargeability (ms)

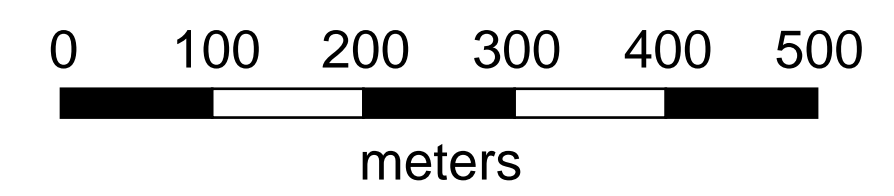


Project Information:
 Survey by: SJ Geophysics Ltd.
 Survey Type: Volterra-3DIP
 Survey Date: June 2016
 Inversion by: SJ Geophysics Ltd.
 Inversion Software: UBC-GIF DCIP3D

Instrumentation:
 Receiver: Volterra 24-bit Four Channel Acquisition Units
 Transmitter: GDD TX II
 Array Type: Distributed 3DIP

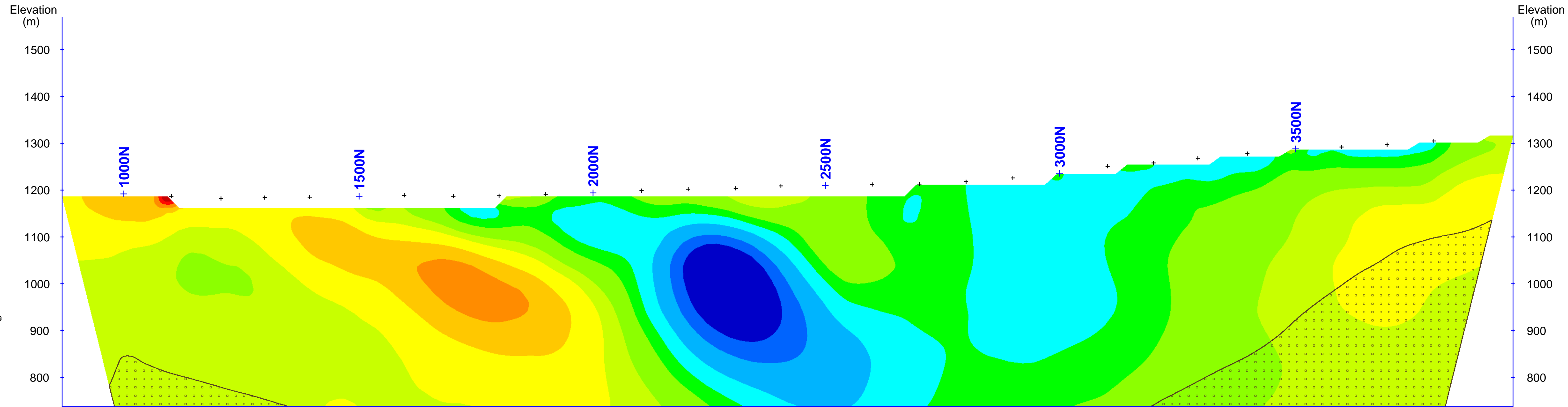
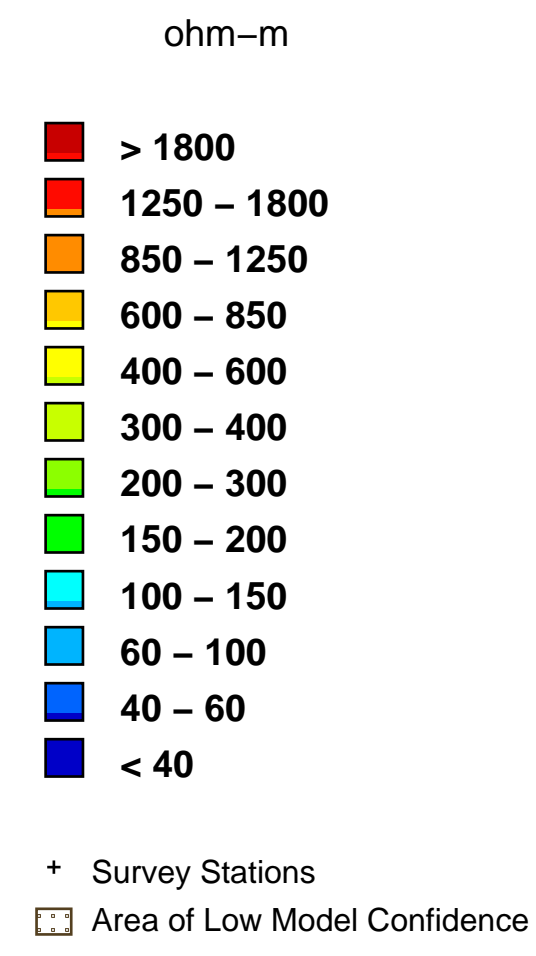
Mapping Information:
 Index Map Datum: NAD83
 Index Map Projection: UTM Zone 8N
 Section Map Projection: Local Coordinate System
 Chargeability Inversion Model: ipinv3dUTM.chg
 Resistivity Inversion Model: dcin3dUTM.chg
 Mapping Date: 18-Jul-2016

Colour Classification:
 Resistivity: Modified Logarithmic
 Chargeability: Modified Linear

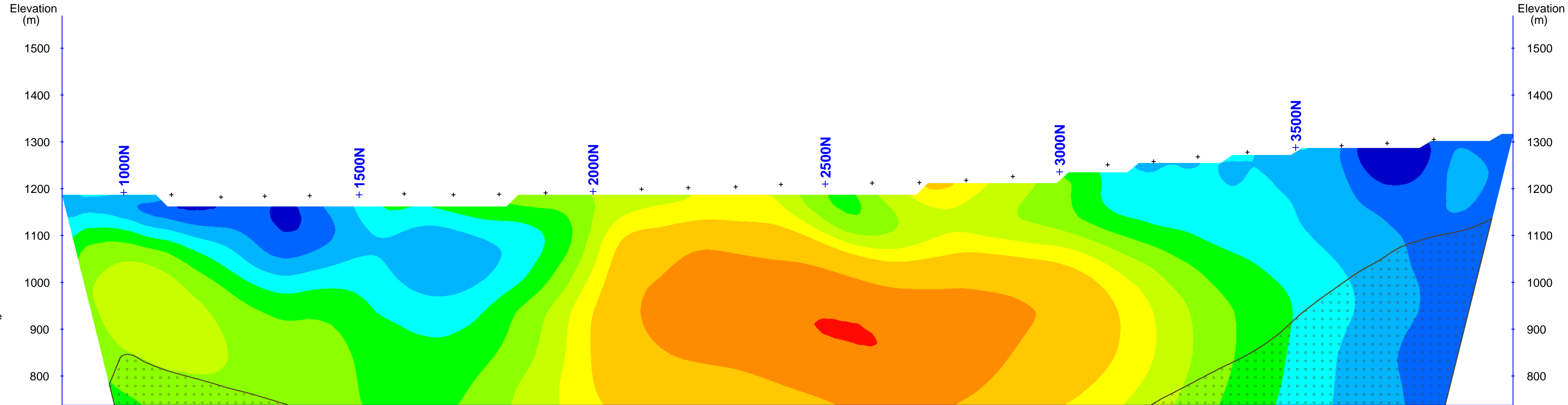
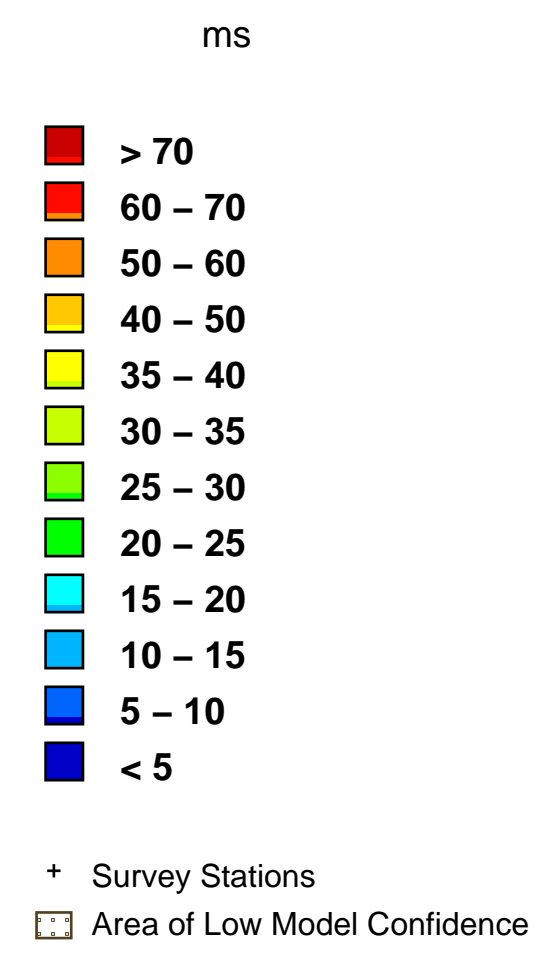


Rockhaven Resources Ltd.
Klaza Property
 Yukon Territory, Canada

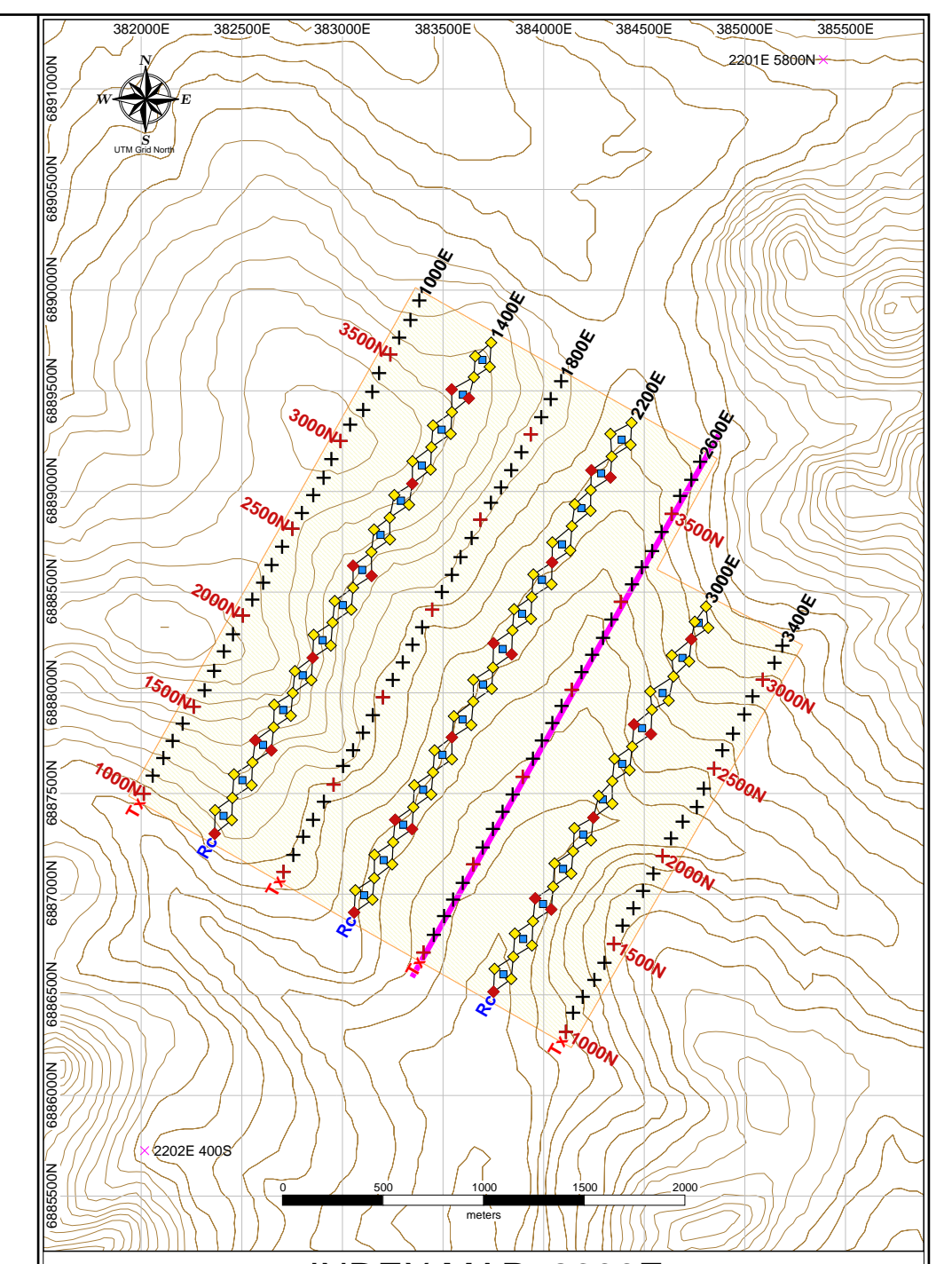
Volterra - 3DIP Survey
3D Inversion Models
 of
Interpreted
Resistivity & Chargeability
 Cross Section: 2200E



Interpreted Resistivity (ohm-m)



Interpreted Chargeability (ms)

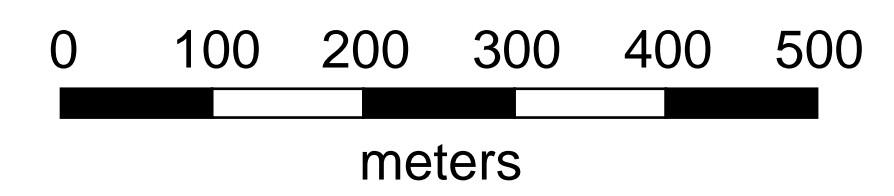


Project Information:
 Survey by: SJ Geophysics Ltd.
 Survey Type: Volterra-3DIP
 Survey Date: June 2016
 Inversion by: SJ Geophysics Ltd.
 Inversion Software: UBC-GIF DCIP3D

Instrumentation:
 Receiver: Volterra 24-bit Four Channel Acquisition Units
 Transmitter: GDD TX II
 Array Type: Distributed 3DIP

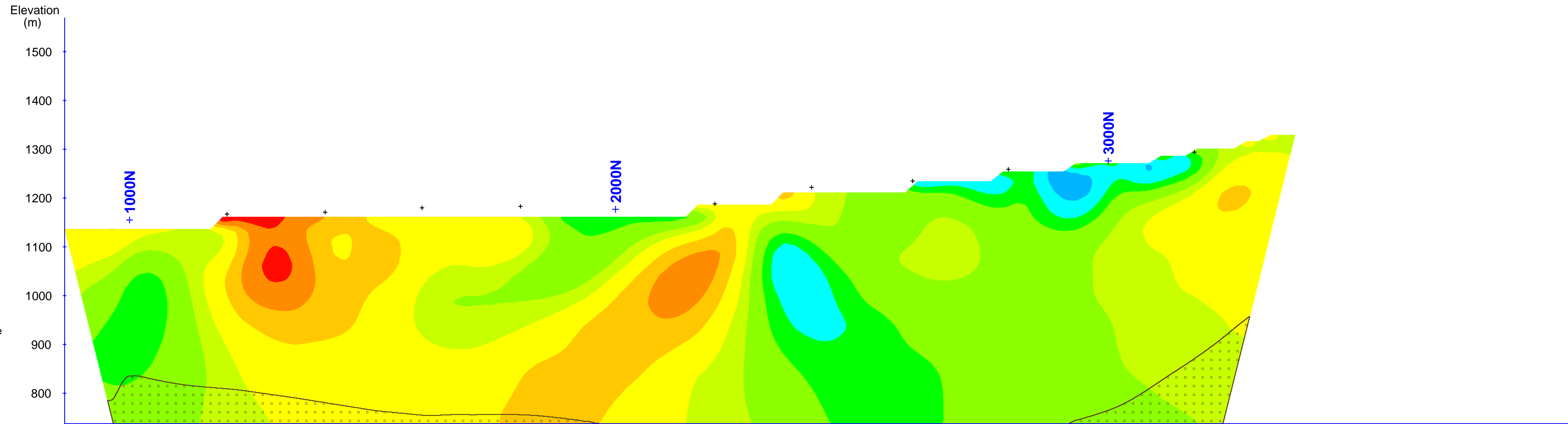
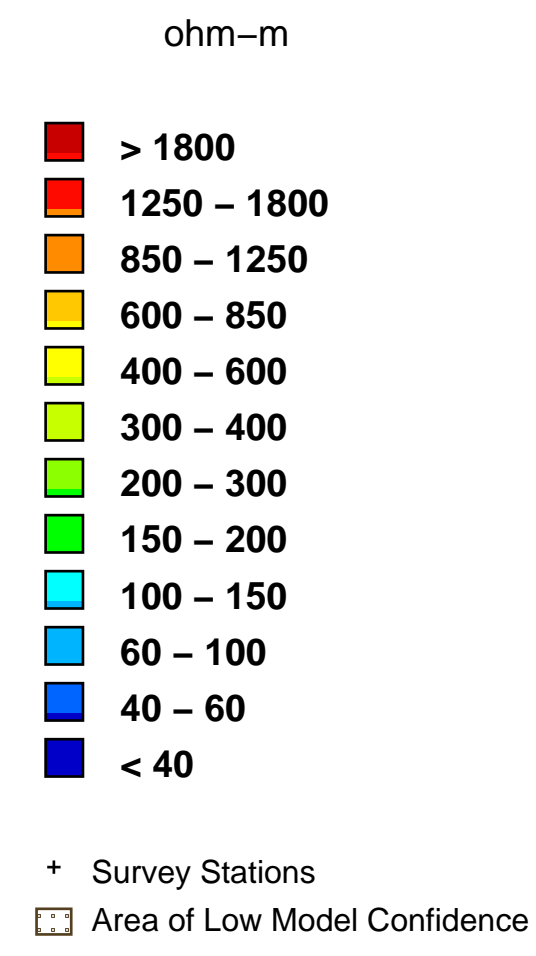
Mapping Information:
 Index Map Datum: NAD83
 Index Map Projection: UTM Zone 8N
 Section Map Projection: Local Coordinate System
 Chargeability Inversion Model: ipinv3dUTM.chg
 Resistivity Inversion Model: dcin3dUTM.con
 Mapping Date: 18-Jul-2016

Colour Classification:
 Resistivity: Modified Logarithmic
 Chargeability: Modified Linear

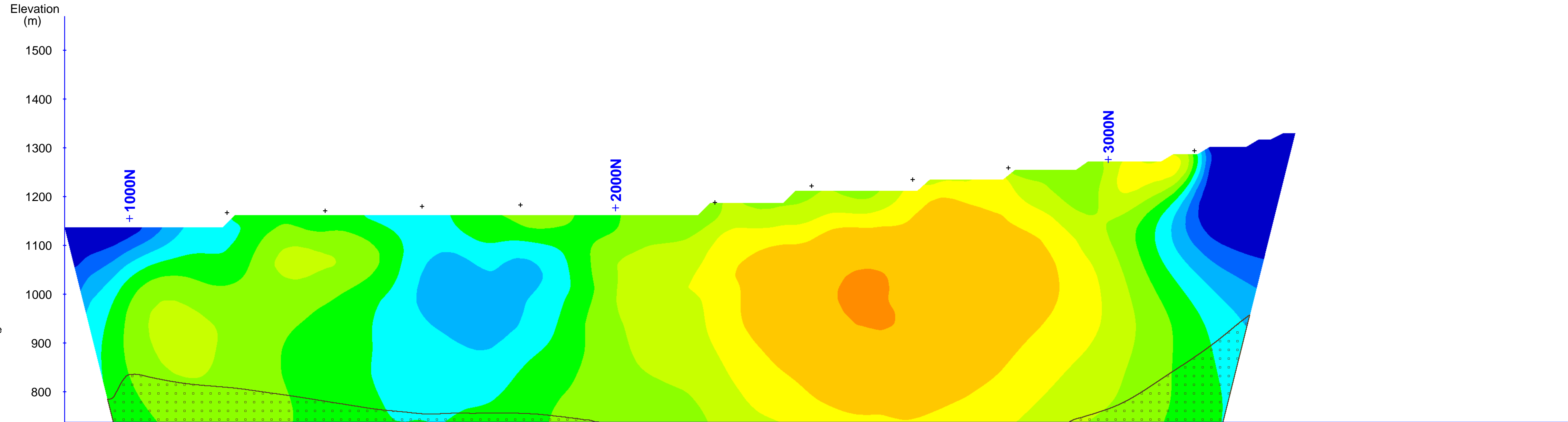
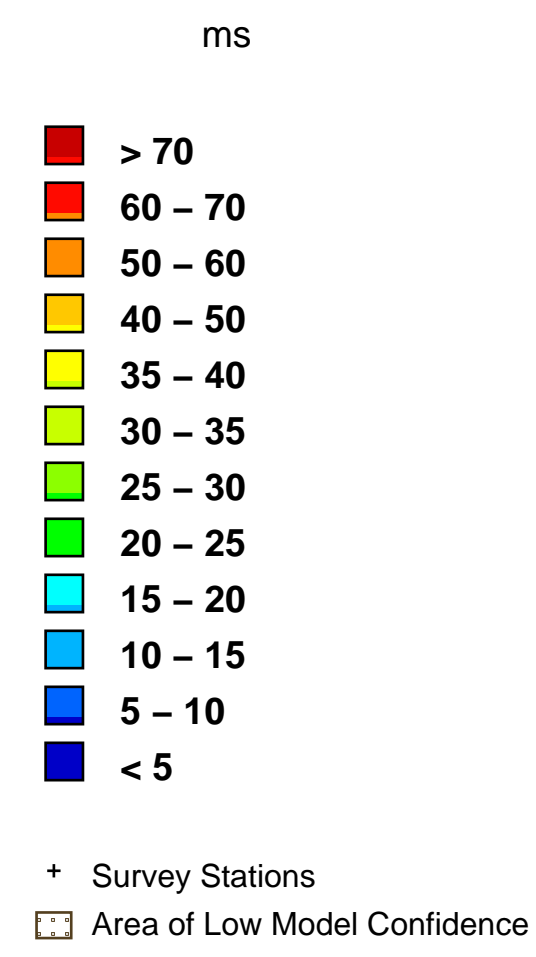


Rockhaven Resources Ltd.
Klaza Property
 Yukon Territory, Canada

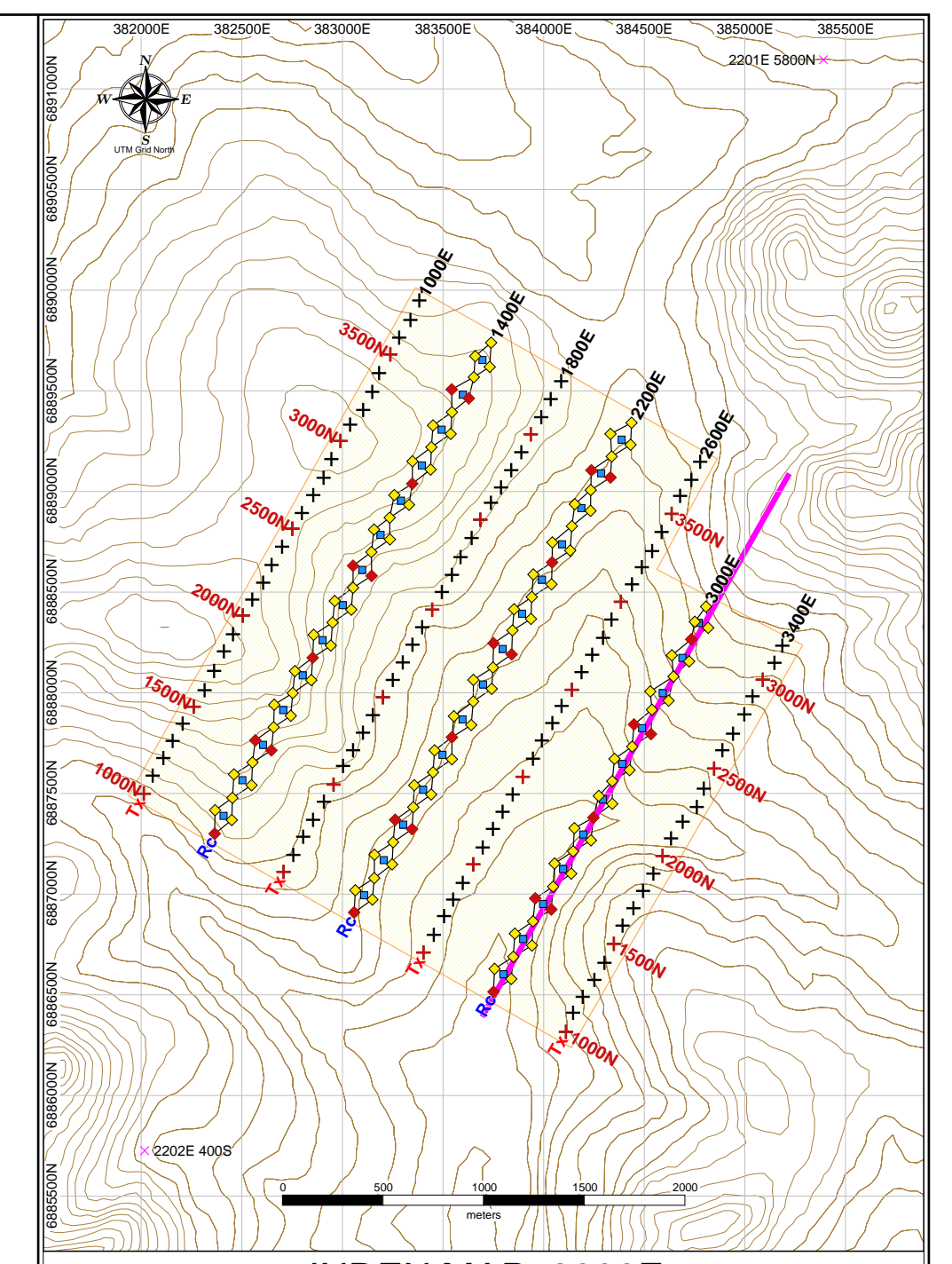
Volterra - 3DIP Survey
3D Inversion Models
 of
Interpreted
Resistivity & Chargeability
 Cross Section: 2600E



Interpreted Resistivity (ohm-m)



Interpreted Chargeability (ms)

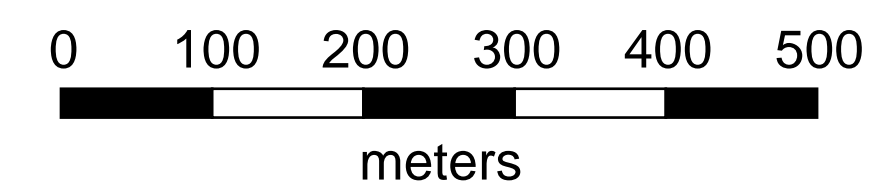


Project Information:
 Survey by: SJ Geophysics Ltd.
 Survey Type: Volterra-3DIP
 Survey Date: June 2016
 Inversion by: SJ Geophysics Ltd.
 Inversion Software: UBC-GIF DCIP3D

Instrumentation:
 Receiver: Volterra 24-bit Four Channel Acquisition Units
 Transmitter: GDD TX II
 Array Type: Distributed 3DIP

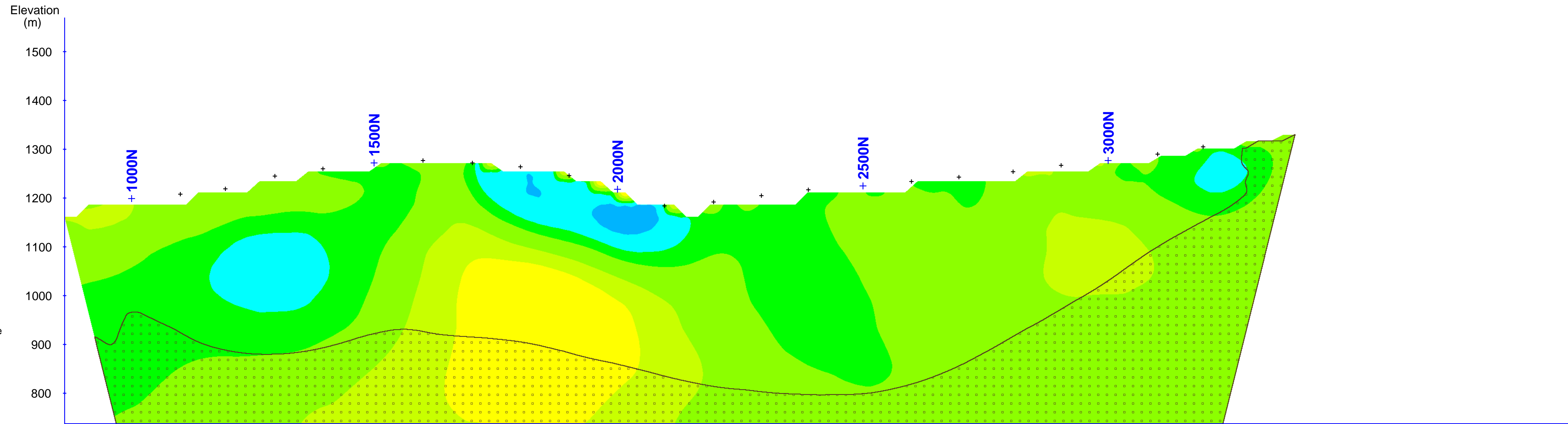
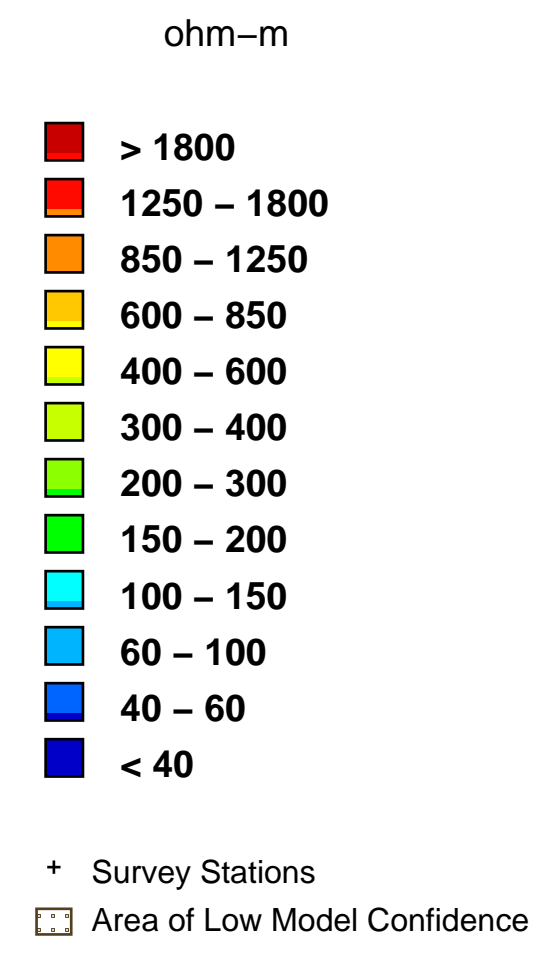
Mapping Information:
 Index Map Datum: NAD83
 Index Map Projection: UTM Zone 8N
 Section Map Projection: Local Coordinate System
 Chargeability Inversion Model: ipinv3dUTM.chg
 Resistivity Inversion Model: dcinvt3dUTM.con
 Mapping Date: 18-Jul-2016

Colour Classification:
 Resistivity: Modified Logarithmic
 Chargeability: Modified Linear

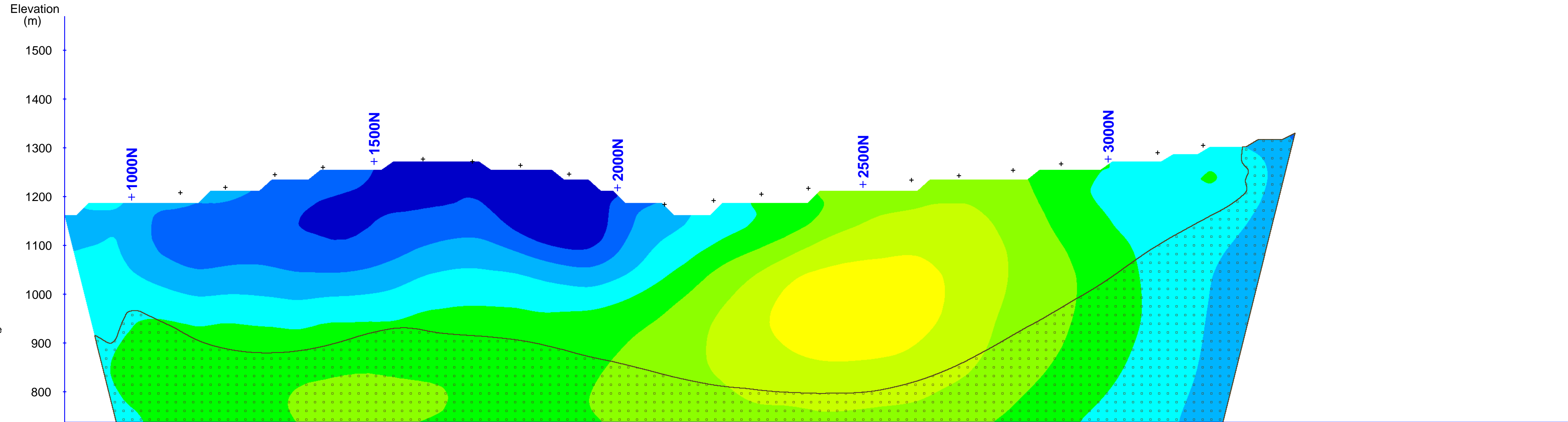
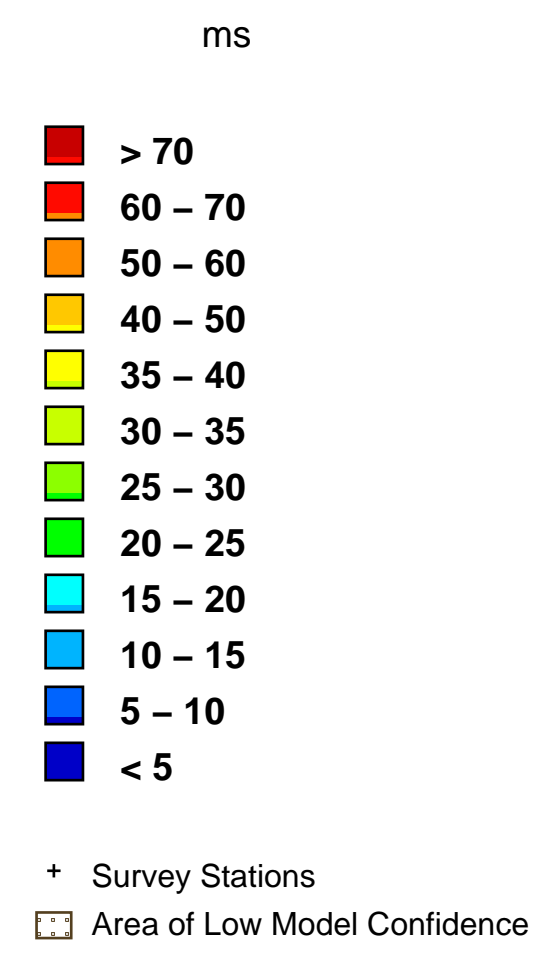


Rockhaven Resources Ltd.
Klaza Property
 Yukon Territory, Canada

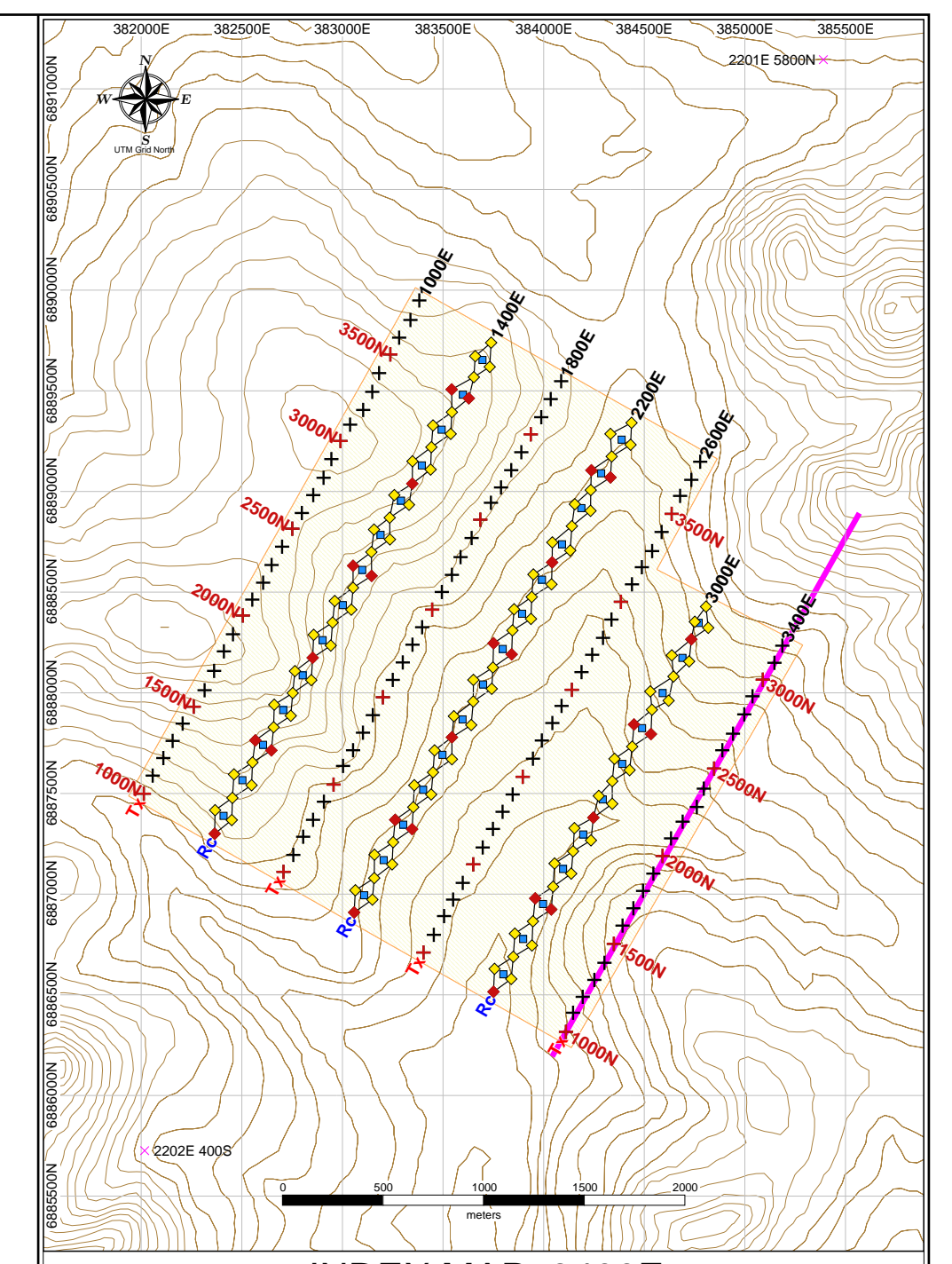
Volterra - 3DIP Survey
3D Inversion Models
 of
Interpreted
Resistivity & Chargeability
 Cross Section: 3000E



Interpreted Resistivity (ohm-m)



Interpreted Chargeability (ms)

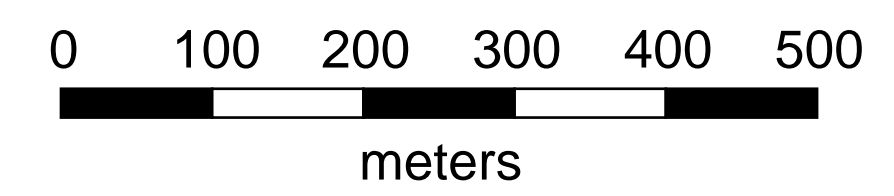


Project Information:
 Survey by: SJ Geophysics Ltd.
 Survey Type: Volterra-3DIP
 Survey Date: June 2016
 Inversion by: SJ Geophysics Ltd.
 Inversion Software: UBC-GIF DCIP3D

Instrumentation:
 Receiver: Volterra 24-bit Four Channel Acquisition Units
 Transmitter: GDD TX II
 Array Type: Distributed 3DIP

Mapping Information:
 Index Map Datum: NAD83
 Index Map Projection: UTM Zone 8N
 Section Map Projection: Local Coordinate System
 Chargeability Inversion Model: ipinv3dUTM.chg
 Resistivity Inversion Model: dcinv3dUTM.con
 Mapping Date: 18-Jul-2016

Colour Classification:
 Resistivity: Modified Logarithmic
 Chargeability: Modified Linear



Rockhaven Resources Ltd.
Klaza Property
 Yukon Territory, Canada

Volterra - 3DIP Survey
3D Inversion Models
 of
Interpreted
Resistivity & Chargeability
 Cross Section: 3400E