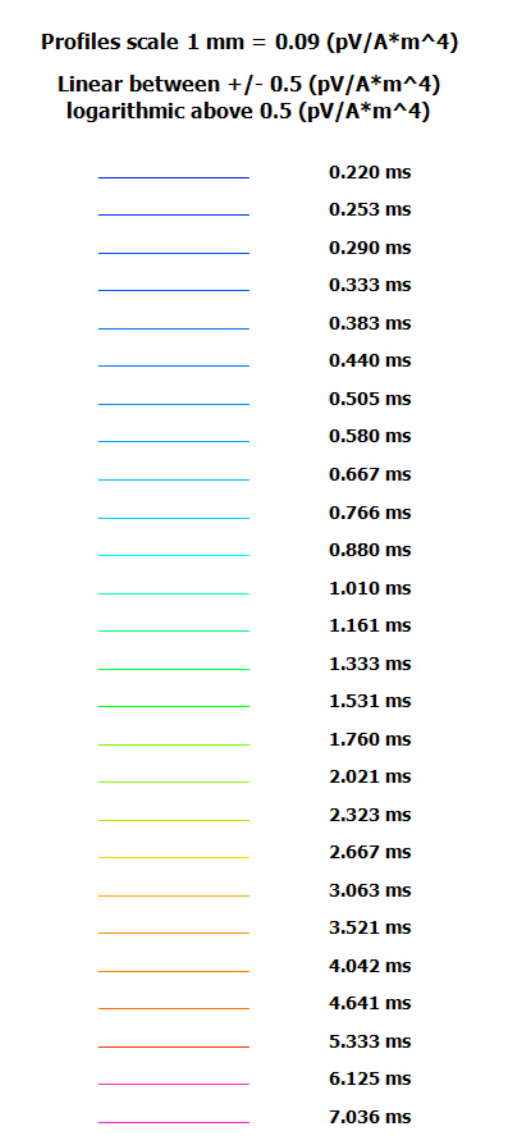
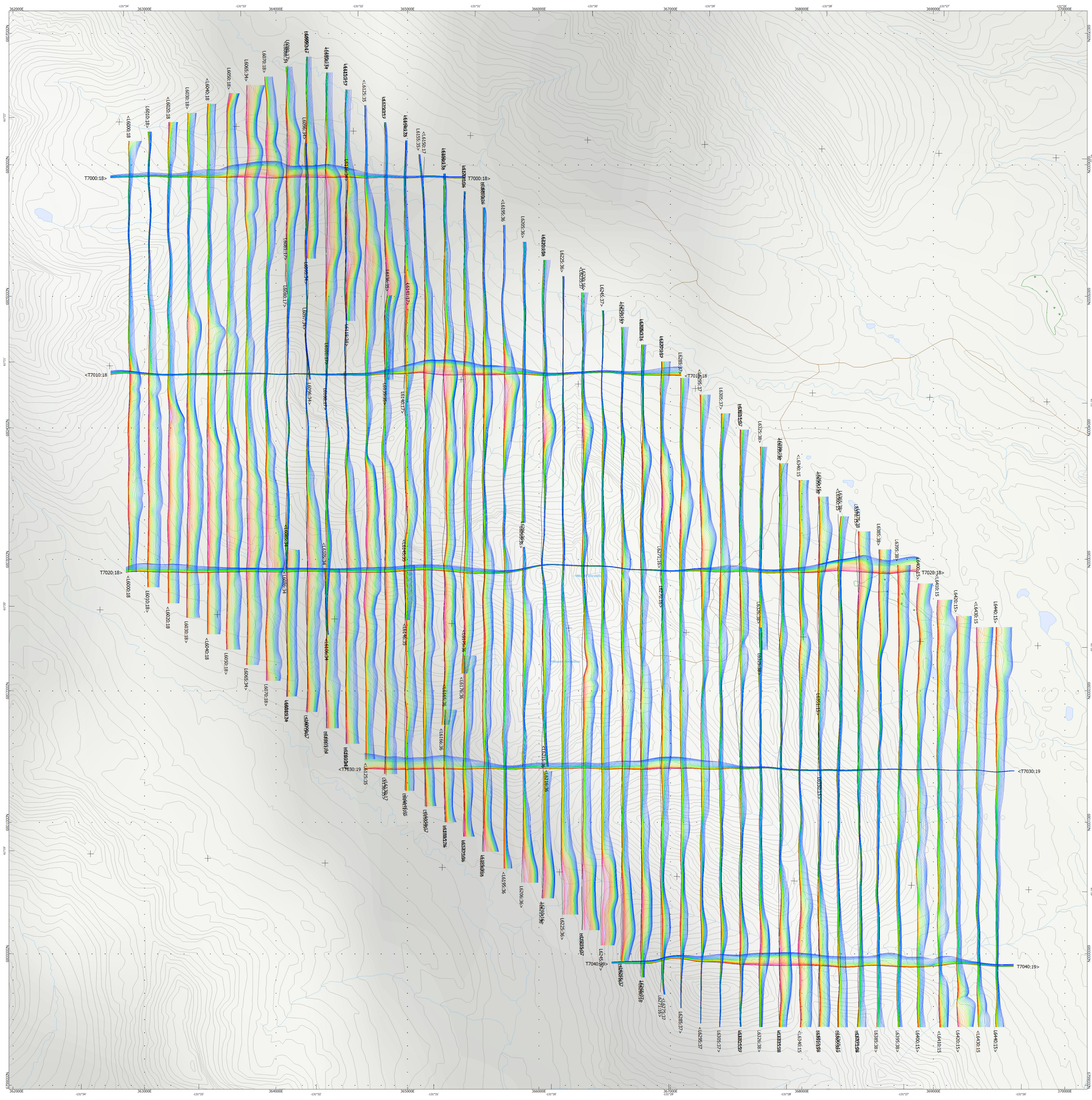


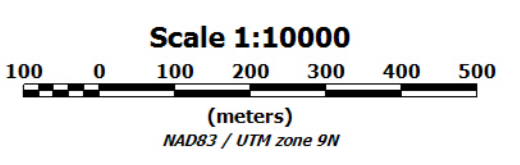
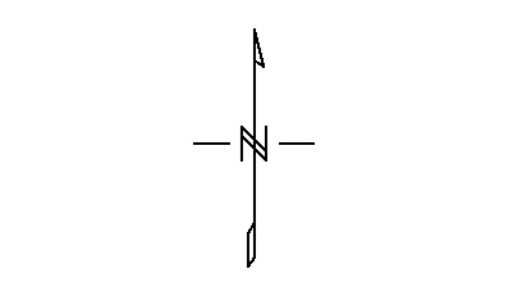
SURVEY SPECIFICATIONS:
 Survey Date: April 23rd - July 31st, 2016
 Survey Base: K2X Camp, Yukon
 Aircraft: Aeromobile A-star 330 B3 C-GTND / C-PVTM
 Survey Line Spacing: 150 metres
 Survey Line Direction: N 0° E / N 180° E
 The Line Spacing: 1500 metres
 The Line Direction: N 90° E / N 270° E
 Average Aircraft Terrain Clearance: 147 metres
 EM Transmitter Loop: Towed at an average terrain clearance of 31 metres below the helicopter
 2 Magnetic Sensors: Towed at an average terrain clearance of 21 metres below the helicopter

INSTRUMENTS
 Geotek Time Domain Electromagnetic System (VTEM)
 Concentric Box Geometry
 X-Coil Diameter: 0.32m
 Z-Coil Diameter: 1.2m
 Transmitter Loop: Diameter 29 Metres
 Dipole Moment: 401,382 nA
 Transmitter Waveform: Trapezoid, Pulse Width 7.34 ms, Base Frequency 30 Hz
 Geometric High Sensitivity Caesium Magnetic Sensors
 Magnetic Resolution: 0.02 nT at (L042)

MAP PROJECTIONS
 Datum: NAD83
 Projection: Universal Transverse Mercator zone 9N
 Central Meridian: 129°W
 Central Scale Factor: 0.9996
 False Easting/Northing: 500,000m/0m
 Major Axis: 6378137
 Inverse Flattening: 298.25722
 NTS: 105605, 105606



TOPOGRAPHIC LEGEND:
 - Streams / Rivers
 - Contours
 - Lakes / Ponds
 - Wetlands



The topographic data base was derived from 1:50,000 NRC (Natural Resources Canada) NTDB data (www.geographic.ca).
 Background shading is derived from NASA SRTM (Shuttle Radar Topographic Mission) data (www.srtm.csi.cornell.edu).
 Grid data derived from Geocommunities 1:250,000 (www.geocomm.com) and Natural Earth 1:10,000,000 Database (www.naturalearthdata.com/downloads).

BMC Minerals (No.1) Ltd
Wolf
 Wolverine Lake, Yukon

Geotech VTEM System
 VTEM dB/dt Z Component Profiles
 Time Gate 0.220 - 7.036 ms

Flown and processed by Geotech Ltd.
 245 Industrial Parkway North,
 Aurora, Ontario, Canada L4G 4C4
 www.geotech.ca

September 2016